

MAP No.

105 B 6/10

ASSESSMENT REPORT  
PROSPECTUS  
CONFIDENTIAL  
OPEN FILE



DOCUMENT NO.:

091715

MINING DISTRICT:

WATSON LAKE

TYPE OF WORK:

GEOLOGICAL

REPORT FILED UNDER: United Keno Hill Mines Ltd.

DATE PERFORMED: Aug. 9-16, 1986

DATE FILED: April 6, 1987

LOCATION	LAT.	KR 60°27'N/MR 60°43'N
	LONG.	KR 131°10'W/MR 131°5'W

AREA:  
RANCHERIA

CLAIM NAME & NO.

KR 1-50, YA90727 - YA90776  
MR 1-100, YA90627-YA90726

VALUE \$ 55,000.00
WORK DONE BY:
WORK DONE FOR:
DATE TO GOOD STANDING

D.R. Prince and D.J. Ouellette  
United Keno Hill Mines Ltd.

REMARKS:  
#136 KR  
#137 JACOB

091715



UNITED KENO HILL MINES LIMITED

Report  
on the  
MARKER LAKE GROUPS  
MR & KR  
August 1986



Rancheria Area, Watson Lake Mining District

NTS 105 B/6810

Supervised by: D.R. Prince

Report written by: Dennis J. Ouellette

Date: October 1986

This report has been examined by  
the Geological Evaluation Unit  
under Section 53 (4) Yukon Quartz  
Mining Act and is allowed as  
representation work in the amount  
of \$ 55000.00 .

for *D. D. Emmond*  
Regional Manager, Exploration and  
Geological Services for Commissioner  
of Yukon Territory.

## TABLE OF CONTENTS

SUMMARY	...1
INTRODUCTION	...3
HISTORY	...4
ACCESS	...5
REGIONAL GEOLOGY	...6
LOCAL GEOLOGY	
A) Meta-sediments (1)	...6
B) Marble (1m)	...7
C) Garnet Mica Schist (1s)	...7
D) Granodiorite (2)	...8
E) Rhyolite (3)	...8
F) Dykes & Veins (4p,4q,4m)	...8
STRUCTURAL GEOLOGY	...9
MINERALIZATION	
MR Group	...10
KR Group	...11
RECOMMENDATIONS	
MR Group	...12
KR Group	...13
APPENDIX I	
PROPERTY	...14
APPENDIX II	
PERSONNEL	...16
APPENDIX III	
SUPPORT	...17
APPENDIX IV	
COST BREAKDOWN	...18
APPENDIX V	
ASSAY SHEETS	...19

091715

LIST OF MAPS

In order of appearance.

- 1) Property Locations Map
- 2) MR Claim Map
- 3) KR Claim Map
- 4) MR Sample Location & Geology Map
- 5) KR Geology Map
- 6) KR Sample Location Map
- 7) KR Sample Results Map

## SUMMARY

MR Group

Portions of the ten claim by ten claim block MR were prospected and mapped at a scale of 1:10,000 during the week from August 9 to August 16, 1986 from two camps consisting of two persons each. The staking contractor, Denis Jacob, also spent the week on the property while locating claim posts and affixing claim tags to the posts. The project was abandoned after the first week due to blizzard conditions.

A total of 59 soil and stream sediment samples and 11 rock samples were taken.

Several small order anomalies (<10 opt Ag from rock assays) were discovered on the MR property. Soil analysis yielded values as high as 27ppb gold, 1034ppm Pb, 2008ppm Zn and 48ppm Ag. Rock assays yielded values as high as 5.13 opt Ag with 0.5% Pb and 0.48% Zn. Though no highgrade ore material was discovered, the presence of high geochemical values warrants further work.

A total of \$31,240.14 was spent on the MR property. This represents three years assessment work.

KR Group

The KR property was covered from one four person camp from July 26 to August 4, 1986. The KR property consists of fifty claims staked as a five claim by ten claim block; the long axis running east-west. The claims cover the contact between the Marker Lake granodiorite batholith and Paleozoic meta-sediments. The contact was found to be convoluted.

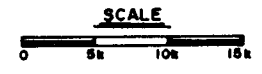
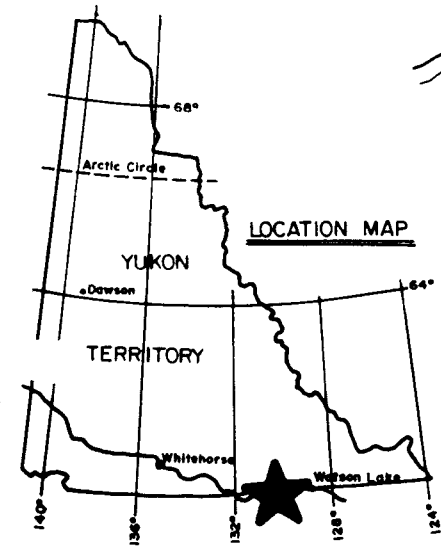
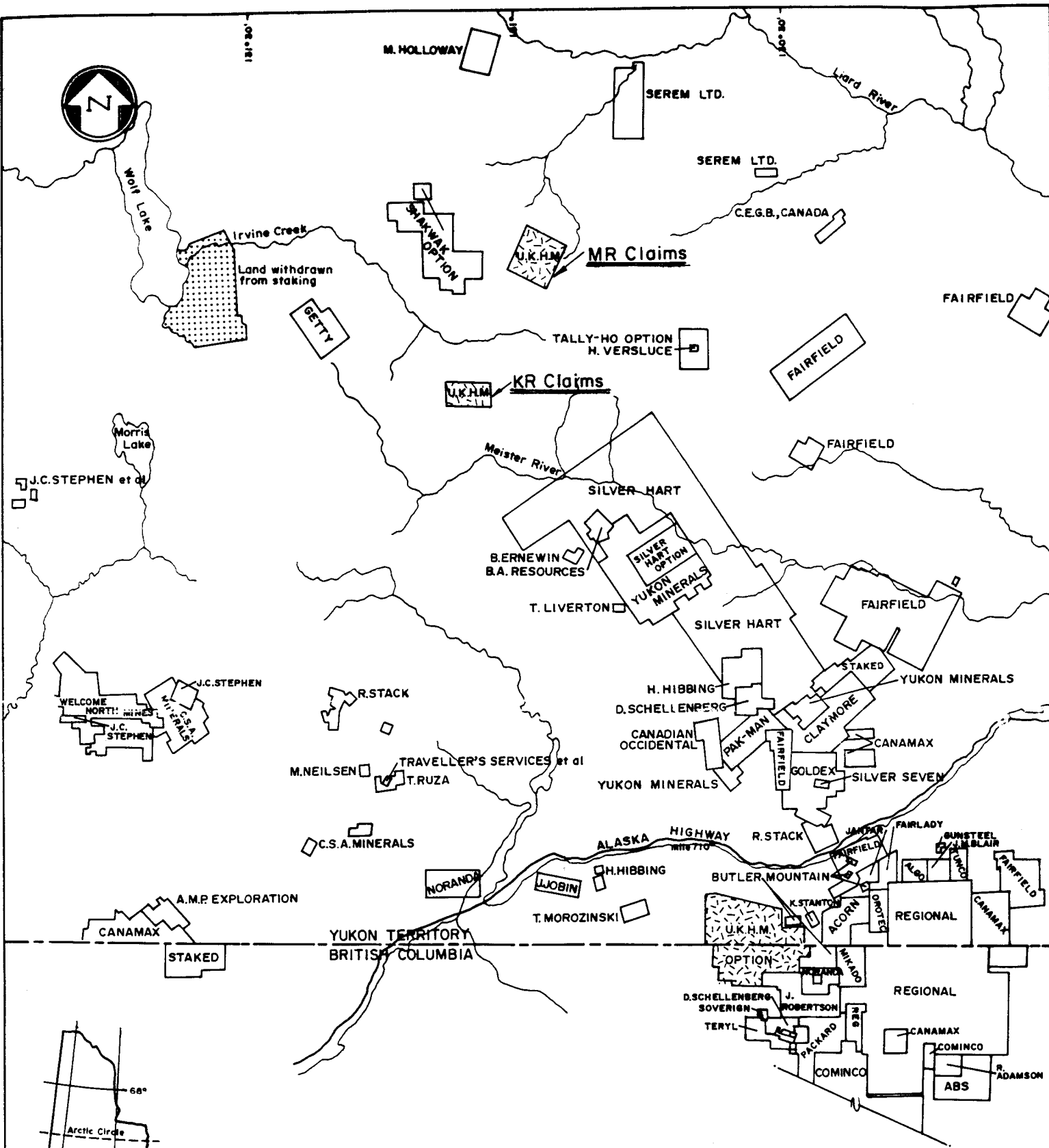
A total of 163 soil and stream sediment samples and 19 rock samples were taken. Several low order anomalies (<10 opt Ag from rock assays) were outlined on the property. The most interesting area is along marble/schist contacts. Several of these areas exist on the property. It is recommended that these areas be examined in more detail during the 1987 field season.

The remainder of the property should be prospected and mapped at a 1:10,000 scale. The 1986 showings should be examined closer by trenching and detailed geochemistry. Particular attention should be shown to possible gold bearing structures. If no significant showings are discovered during the 1987 field season no further money should be spent on the property and the property should be allowed to lapse.

A total of \$32,448.27 was spent on the KR property. This

UNITED KENO HILL MINES LIMITED

*allows for five years of assessment work.*



Note: Claim location and ownership is considered accurate.

<b>UNITED KENO HILL MINES LTD.</b> EXPLORATION DEPARTMENT WHITEHORSE-YUKON	
<b>PROPERTY LOCATION</b> <b>MR AND KR CLAIMS</b>	
<b>N.T.S. Sheet No:</b> 105-B; 104-0	<b>Scale:</b> 1:500,000
<b>Drawn by:</b> H.D.Plaskett	<b>Date:</b> November 1986

# UNITED KENO HILL MINES LIMITED

## INTRODUCTION

The Marker Lake batholith is located approximately 25 miles north and slightly west of the Rancheria Lodge (mile 710 on the Alaska Highway). The Marker Lake area has the potential for hosting high grade Ag, Pb, Zn deposits. Several properties already exist around the intrusive. Shakwak holds over 150 claims on the eastern contact. The claims cover several northeasterly trending vein/fault structures which consist of manganese gossans with included galena and sphalerite. Hudson Bay Mining and Smelting hold claims on the eastern contact along Cabin Creek. The claims cover an area with argentiferous galena and sphalerite in vein structures.

Information gleaned from a 1978 Geological Survey of Canada Regional Water and Sediment Sample Survey over NTS 105/B (Wolf Lake Sheet) under the Federal Uranium Reconnaissance Program (Open File 563, G.S.C.) outlined two separate areas which contained elevated amounts of silver, lead and zinc. These two areas were staked by United Keno Hill Mines Limited in April of 1986.

The largest of the anomalous areas was staked as the MR group and consists of 100 claims in a ten by ten block. The area is directly east of Shakwak's SHA and GRA claims south of Gravel Creek. The original G.S.C. samples were taken from various creeks flowing east and west off of a northeasterly trending ridge. The ridge has two sediment/intrusive contacts at north and south ends, the central sediment 'band' possibly being a large pendant. The ridge varies in elevation from 5000 to 6500 feet. Not all samples are anomalous in all three elements (Zn, Pb, Ag) but all are anomalous in at least two.

The KR Group, north of Almost Lake and East of Plateau Lake, required 50 claims staked in a 10 claim E-W by 5 claim N-S manner to cover the contact area. Similar to the MR group, the three samples defining this anomalous area also came from creeks draining south from an east-west trending ridge. Although the exact locations of the G.S.C. stream sediment samples were not found, they all appear to have been collected from areas within the sedimentary sequences and possibly proximal to a marble unit.

UNITED KENO HILL MINES LIMITED

SAMPLE NO.	ZINC	LEAD	SILVER
MR Sample Listing in ppm			
1667	62	16	0.3
1668	66	24	0.4
1669	70	23	0.2
1670	144	44	0.9
1671	130	38	0.1
1672	82	18	0.1
1673	200	36	0.8
1674	62	10	0.1
1675	205	60	0.6
1676	78	12	0.2
KR Sample Listing in ppm			
1652	235	158	0.6
1653	148	54	0.5
1654	166	30	0.4

HISTORY

Exploration in the Rancheria area began in the 1870's with the discovery of placer gold on the Liard River and its tributaries; Cabin Creek, Sayyea Creek, Scurvey Creek and Rainbow Creek. Work stopped in the area with the Klondike Area rush and placer exploration did not resume until the advent of the bush plane in the mid 1930's. Due to the isolation of the area, exploration was minimal, being limited to a few individual miners, and was discontinued because transportation made mining of the area unprofitable.

The Second World War provided road access through the area with the construction of the Alaska Highway. After the war exploration in the area began once again. Most of the exploration done was carried out within a few miles of the highway. Many of the showings are still staked at this time (i.e. the Sterling property, the Switchback vein, Logjam). Exploration was sporadic through the 1960's and into the early 1970's, interest seemingly centered around Logtung and other skarn deposits. The rapid rise in silver prices late in 1979 and into 1980 brought about renewed interest in the Rancheria area and the discovery of the Midway deposit (Regional Resources Ltd.) in 1980. Since that time a great deal of staking has occurred in the area around the Midway deposit and in the Cassiar batholith south of the highway. Slowly, the target areas have moved northward resulting in the discovery of the CMC vein, located about six miles south of the Marker Lake Stock.

UNITED KENO HILL MINES LIMITED

ACCESS

A haulage road from the Alaska Highway east of the Rainbow Lodge to the CMC vein ends about six miles south of the Marker Lake Stock. Access to the area at present is limited to helicopter.

## UNITED KENO HILL MINES LIMITED

### Regional Geology

The Wolf Lake map sheet (105B) was mapped at a scale of 1:250,000 by W.H. Poole during 1951 to 1955, and by J. A. Roddick and L. H. Green in 1959. The area is presently being mapped at a scale of 1:50,000 by Grant Lowey of D.I.A.N.D. Map sheets 105 B/1 & 2 were mapped in 1985. 105 B/7 & 8 are being completed in 1986 and in 1987 105 B/10 & 11 will be mapped.

The Marker Lake Stock, possibly a younger phase of the Cretaceous Cassiar batholith, is a biotite-muscovite granodiorite. The stock intrudes Cambrian or Earlier(?) sediments and metasediments (units 1a, 1c, 1d and 2: Wolf Lake Map Sheet. G.S.C.) The units consist of biotite schists, some with sills, dikes and irregular bodies of pegmatite, and quartzites with phyllites and slates. A biotite quartz monzonite borders the Marker Lake Stock to the east.

A number of bedding faults exist between limestone and phyllite units of the sedimentary rocks in the area. These faults, and in some cases the contact itself, are host to sulphide deposition. Faulting has also occurred along the intrusive-sedimentary contact and in places is a host to sulphide deposits. An example is Hudson Bay Mining's BINGY property which had grab samples run as high as 146 opt Ag with Pb values as high as 69% and zinc as high as 32.4%. It has been demonstrated that the pegmatites and felsic dikes in the area crosscut the sulphides.

Other sulphide occurrences in the area include skarns and sulphide veins in skarns, such as Shakwak's property which has reported silver values from 50 to 100 opt over five feet from channel samples. There are also quartz/carbonate veins in sedimentary rocks (Logan), and veins in highly fractured granitoid rocks (BOY).

### Local Geology

A number of reconnaissance traverses were carried out from separate camps on the MR and KR properties. The mapping was done on a scale of 1:10,000. Six distinct units were used in the mapping program. Those units are: granodiorite, undifferentiated meta-sediments, marble, garnet - mica schist, rhyolite and dykes.

**A) Meta-sediments (1):** These rocks include quartzites with quartz-biotite schist and phyllite units which are Proterozoic to early Paleozoic in age. The quartzites are medium to thick bedded and retain much of their original bedding features. The schists occur within the quartzites as units varying in width from tens of

## UNITED KENO HILL MINES LIMITED

centimeters to a few meters. The carbonate/clastic sediment contact is invariably a schist unit. The contact in many places appears to be a bedding fault.

The clastic meta-sediments are regionally jointed and faulted along bedding planes. These fault structures have provided access routes for both felsic and mafic dike materials. As a consequence, many of the bedding planes are marked by diabasic and felsic sills and dikes. The felsic dikes include simple pegmatites of feldspar - quartz, quartz veins with minor beryl and barren quartz. Sediments which are immediately adjacent to or are entirely enclosed by the intrusive are invariably altered and carry a limonitic cap.

**B) Marble (1m):** Large units of Proterozoic to early Paleozoic limestone have been recrystallized to marble as a result of the plutonic intrusions in the area. For the most part, the limestones are thick bedded and pure. Beds range in thickness from a few centimeters to a meter or so. The marble units are interbedded in places with a diopside-rich calc silicate hornfels which resulted from the metamorphism of an impure band of calcareous material. These bands seldom exceed a few centimeters in width. Also included in the marble is a unit of calc-silicate composition. This unit is green in colour, medium grained and varies in thickness from <10 centimeters to about 1.5 meters. Locally, this unit will carry low values in Pb, Zn, Cu and Ag.

Very little marble was found on the MR group. One large outcrop was found on the west-central boundary of the property. The outcrop consists of a 75 meter wide, thin bedded marble unit exposed on a steep west facing slope. The unit does not contain the hornfels bands found on the KR group. The outcrop is iron and manganese stained at the top. Some finely disseminated pyrite and pyrrhotite occurs along bedding or fracture surfaces. The unit dips 25 degrees to the SW and has a strike of 150 degrees. The rock becomes coarser to the east as it approaches the intrusive contact. The contact was not observed in outcrop. One other area of marble float was located but none was found in outcrop.

The marble units on KR are quite extensive and can be traced for hundreds of meters. Units range in width from less than one meter to greater than 20 meters. Local variations in dip occur primarily as a result of the granodiorite intrusion.

The marble unit is the potential host for several types of mineralization. The unit, as a whole, tends to return a higher geochemical background in Ag, Pb and Zn.

**C) Garnet Mica Schist (1s):** This highly metamorphosed unit is characterized by large garnets (up to 5 cm in diameter) in a schistose fabric. Also present are thin units of calc-silicate material. The schist is assumed to be Proterozoic to early

Paleozoic in age and contemporaneous with the metasediments. Extensive alteration of the garnets and biotite impart a distinctive red-brown coloration to exposed surfaces of the schist. Several quartz veins cross-cut the unit, some being up to 0.5 meters in thickness and several 10's of meters in strike length.

D) Granodiorite (2): The granodiorite in the area is part of the Marker Lake Batholith. It is a medium to coarse grained rock which occurs as large masses and small plugs occasionally in fault contact with the sedimentary package. The rock is composed essentially of feldspar, quartz and biotite. The biotite content of the intrusives on the MR appear to be higher than those of the KR property. Cross-cutting relationships and alteration zones indicate that these rocks are younger than the sediments in the area. Dating has provided a Cretaceous age for the granodiorites. They are probably related to the Cassiar Batholith though are likely younger.

The granodiorites contain dikes of medium to coarse grained complex pegmatites varying in composition from feldspar - quartz - biotite to feldspar - quartz - biotite - garnet. The pegmatites tend to radiate outward from within the intrusive.

E) Rhyolite (3): The rhyolite unit was found only on the MR Group of claims. The rhyolite occurs as dikes and possibly flows perpendicular to the elongation of the granodiorite massif. The unit is aphanitic/porphyritic, the phenocrysts being mainly quartz. Weathered surfaces are iron stained while fresh surfaces have a reddish appearance. Some outcrops also contain manganese oxide on their surfaces. Rock and soil analysis from areas which contain the rhyolite resulted in elevated gold values. Values never exceeded 27 ppb gold (soil sample # 94153).

F) Dykes & Veins (4p, 4q, 4m): Dykes in the area include pegmatites (4p), quartz veins (4q) and mafic dykes (4m). The pegmatites occur along the outer fringes of the main intrusive massif and within the sediments around the intrusive periphery. The pegmatites occupy joints, bedding planes and fractures. In other words any structurally created passageway into which the granite related fluids could pass.

There appears to be two populations of pegmatites. The first, found within and immediately adjacent to the granodiorite, consists essentially of potassium feldspar, quartz and muscovite with a few accessories. These pegmatites occur as dykes tens of meters in length and up to three meters in width. Others take on the form of small masses of large width and relative short length. Some contain large books of biotite. The addition of a red garnet, almandine, is common in pegmatites of a finer grain. These finer grained pegmatites may be better termed aplites due to their sucrose texture and lack of mafic minerals. The second type of

## UNITED KENO HILL MINES LIMITED

pegmatites, consisting entirely of quartz and a feldspar, occur along bedding faults within the thinly bedded quartzites and mica schists. They vary in width from less than .5 meters to about two meters. All are coarse grained. Pegmatites are far more common on the KR Group than on the MR Group.

Quartz veins on the properties were quite common. Several types exist on both properties. The most common type on the KR appears to be a silica flooding; quartz simply filling any voids not previously filled by any other dyke material. The quartz is white, anhedral and massive. This type of vein is commonly termed 'bull quartz'.

A second type of quartz vein is one which is probably related to the pegmatites. All of these veins were found within schist units some distance from the intrusion. They were commonly conformable to the pegmatites. The veins consist of a grey to light grey quartz with an accessory mineral. One such vein held occasional cassiterite crystals to five millimeters (4qc). A second, closest to the intrusive but still within the sediments, contained some tourmaline crystal masses (4qt) and, occasionally, pyrite or chalcopyrite.

A third type of quartz vein present is one which consists of a fine grained drusy quartz (4qd). The quartz varied from light green to white in the same sample. Structurally, the veins occupy fracture systems within gneiss and meta-sediments at the perimeter of the granodiorite intrusive.

The fourth vein system encountered within the quartz biotite schist unit consisted of mineralized vein quartz (4qv). The vein material was not found in outcrop but large pieces of float were sampled. Results were disappointing. The quartz is white to yellow. Due to the high pyrite content, the weathered vein material is in a decomposed state. Structurally, these veins appear to fill fault zones which are perpendicular to the trend of the intrusive contact. One such vein on MR contained minor amounts of galena and yielded 5.13 opt Ag in rock assay. The vein is covered with manganese and iron oxides and is similar to the ore producing veins on other properties to the south (ie. CMC vein).

### Structural Geology

The Marker Lake Batholith trends northwest which is a factor of the major structural trend in the area and, in fact, throughout most of the Cordillera. Similar to the Cassiar Batholith, the Marker Lake Batholith occupies an anticlinal area separating two regional northwest trending synclines.

Bedding faults exist between most of the sedimentary units in the area. Most are marked by phyllite or quartz biotite schist.

## UNITED KENO HILL MINES LIMITED

There exists a regional jointing common to the granitic and sedimentary rocks.

Thrust faults in the area are northeast trending (30/40 NW). They have been seen to thrust the granodiorite onto the Paleozoic sediments on the north end of the MR property. Steeply dipping normal faults offset the thrust faults. The normal faults trend northeast as well (54/V). Some high geochemical values in Pb and Zn as well as Mn were obtained from the normal faults. The combination of reverse and normal faults on MR causes a discordance in stratigraphic units in the area. The result is large blocks of adjacent varying terraines both horizontally and vertically.

### Mineralization

#### MR Group

Very little mineralization was found in the area covered by prospecting on the MR Group. The only instance of visible mineralization is in a sheared zone within the granodiorite at the southwest corner of the property. In this zone, several narrow (5cm) shears contained minor amounts of disseminated galena. The shears are all within an area of about 50 meters. There were also several anomalous soil and rock samples.

One such anomalous area occurs over regional normal fault zones evidenced by notches in ridges, abrupt changes in lithology and the presence of abundant limonite and manganese oxides. Though silver values are low, lead and zinc analysis returned values as high as 508ppm and 868ppm respectively. Manganese is also high at 3620ppm. The faults appear as wide as three meters and can be visually traced for kilometers. There are several of these fault structures. They trend NE to NW. One such vein structure consists of heavily oxidized quartz boulder float which assayed 5.13 opt Ag with 0.50% Pb and 0.48% Zn. The float material resembles material found around the CMC (Silver Hart Mines) vein as well as other vein structures in the Rancheria area. All of the boulders are less than 20 cm in diameter.

Soil samples taken from areas underlain by rhyolite also returned slightly anomalous values. Of greatest interest are the gold results; the values ranging from 2ppb to 27ppb. These values represent the highest gold geochemical response from either property.

There is a mineralized marble outcrop situated close to the 5 opt Ag quartz vein. The marble is heavily oxidized and contains abundant disseminated pyrite and pyrrhotite. No sample of the mineralized material was collected. The marble is within 50 meters of the intrusive but the contact is talus covered and could not be located.

## UNITED KENO HILL MINES LIMITED

### KR Group

Several types of mineralization are present on the KR Group. By far the largest of these is an occurrence of massive pyrite on a marble-granodiorite contact. The mineralization occurs as blebs (to 1 meter) of massive pyrite replacing the marble in close proximity to the intrusive (showing #2). In another area the contact contains narrow (to 5cm) bands of goethite and hematite. Between the granodiorite and the massive pyrite is a narrow band (<15cm) of green calc-silicate material which, in places, contains disseminated galena, chalcopyrite, pyrite and sphalerite. The calc-silicates and the massive pyrite pods are discontinuous and spotty. The highest values from assay were; 0.11% Pb, 0.02% Zn, 0.55 opt Ag and 0.51% Cu (sample numbers 14153 & 14154).

The calc-silicate material can be found in several locations along the granodiorite/ sediment contact. The mineralogy of the unit seldom changes. Mineralization within the rock varies. Most commonly, the unit carries pyrrhotite and pyrite as disseminated euhedral grains. Assays of this material are not encouraging. The unit is commonly manganese stained.

By far the most encouraging mineral occurrence on the property is the existence in several areas of a porous mangiferous rock at the contact of the marble units with a phyllite or quartz-biotite schist. The assays from the rocks produced results as high as 0.05% Pb, 0.60% Zn, 0.14 opt Ag, >600ppm Mn and 1241ppm strontium. These occurrences do not crop out extensively so no dimensions can be put on them. The rocks are so heavily oxidized that any boxwork present could not be identified.

UNITED KENO HILL MINES LIMITED

RECOMMENDATIONS

MR Group

Showing #1:

-soil sample area overlying the shear zone on a 10 meter by 10 meter sample spacing

-channel sample the shear zone including the altered granodiorite between shears.

-trace the structure along strike to the north and south.

Showing #2:

-examine the rhyolites for mineralization.

-sample any vein or shear structures in individual rhyolite outcrops.

-veining around the rhyolites should be examined for gold mineralization

-close grid sample the area around the rhyolites.

Showing #3:

-locate the structure in bedrock.

-hand trench across the structure to determine size and grade.

-trace structure along strike.

Showing #4:

-sample mineralized marble outcrop.

-attempt to locate contact of marble with schist and/or granodiorite.

-close grid sample the area between the marble and Showing #3.

Also:

-map and prospect those areas not covered by the 1986 field season at a scale of 1:10,000.

-prospect along the major fault zones which cover the property. Soil sample at 10 meter intervals in spots where the fault is clearly evident.

-prospecting traverses off the property.

UNITED KENO HILL MINES LIMITED

Concluding Statement:

If high grade samples are discovered corresponding with a structure suitable for producing minable tonnages, then the 1988 field season should include percussion drilling and bulldozer trenching.

If nothing of a more positive nature is discovered during the 1987 field season, no more work should be done on the MR property and the claims should be allowed to lapse.

KR Group

Showing #1:

-install a 10 meter by 10 meter grid over the area under which the manganese unit lies.

-trench one of the easily accessible outcrop showings in an attempt to reach and sample less altered material.

Also:

-prospect the northern boundary of the property.

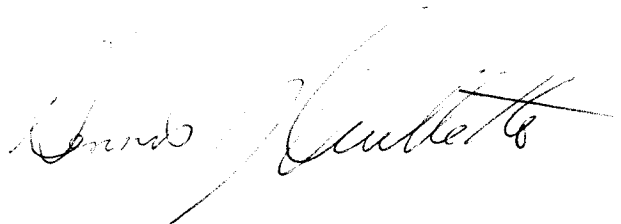
-prospect along marble beds.

-attempt to locate granodiorite/sediment contact.

Concluding Statement:

If high grade samples are discovered corresponding with a structure suitable for producing minable tonnages, then the 1988 field season should include percussion drilling and bulldozer trenching.

If nothing of a more positive nature is discovered during the 1987 field season, no more work should be done on the MR property and the claims should be allowed to lapse.



UNITED KENO HILL MINES LIMITED

APPENDIX I  
PROPERTY

The MR Group consists of 100 contiguous claims staked in April of 1986 as a ten by ten block. The claims are as follows. Assessment work on the MR Property equals 3 years.

MR1 YA90627	MR26 YA90652	MR51 YA90677	MR76 YA90702
MR2 YA90628	MR27 YA90653	MR52 YA90678	MR77 YA90703
MR3 YA90629	MR28 YA90654	MR53 YA90679	MR78 YA90704
MR4 YA90630	MR29 YA90655	MR54 YA90680	MR79 YA90705
MR5 YA90631	MR30 YA90656	MR55 YA90681	MR80 YA90706
MR6 YA90632	MR31 YA90657	MR56 YA90682	MR81 YA90707
MR7 YA90633	MR32 YA90658	MR57 YA90683	MR82 YA90708
MR8 YA90634	MR33 YA90659	MR58 YA90684	MR83 YA90709
MR9 YA90635	MR34 YA90660	MR59 YA90685	MR84 YA90710
MR10 YA90636	MR35 YA90661	MR60 YA90686	MR85 YA90711
MR11 YA90637	MR36 YA90662	MR61 YA90687	MR86 YA90712
MR12 YA90638	MR37 YA90663	MR62 YA90688	MR87 YA90713
MR13 YA90639	MR38 YA90664	MR63 YA90689	MR88 YA90714
MR14 YA90640	MR39 YA90665	MR64 YA90690	MR89 YA90715
MR15 YA90641	MR40 YA90666	MR65 YA90691	MR90 YA90716
MR16 YA90642	MR41 YA90667	MR66 YA90692	MR91 YA90717
MR17 YA90643	MR42 YA90668	MR67 YA90693	MR92 YA90718
MR18 YA90644	MR43 YA90669	MR68 YA90694	MR93 YA90719
MR19 YA90645	MR44 YA90670	MR69 YA90695	MR94 YA90720
MR20 YA90646	MR45 YA90671	MR70 YA90696	MR95 YA90721
MR21 YA90647	MR46 YA90672	MR71 YA90697	MR96 YA90722
MR22 YA90648	MR47 YA90673	MR72 YA90698	MR97 YA90723
MR23 YA90649	MR48 YA90674	MR73 YA90699	MR98 YA90724
MR24 YA90650	MR49 YA90675	MR74 YA90700	MR99 YA90725
MR25 YA90651	MR50 YA90676	MR75 YA90701	MR100 YA90726

82	81	62	61	42	41	22	21	2	1
MR					MR				
YA90708	YA90707	YA90688	YA90687	YA90668	YA90667	YA90648	YA90647	YA90628	YA90627
84	83	64	63	44	43	24	23	4	3
YA90710	YA90709	YA90690	YA90689	YA90670	YA90669	YA90650	YA90649	YA90630	YA90629
86	85	66	65	46	45	26	25	6	5
YA90712	YA90711	YA90692	YA90691	YA90672	YA90671	YA90652	YA90651	YA90632	YA90631
88	87	68	67	48	47	28	27	8	7
MR									
YA90714	YA90713	YA90694	YA90693	YA90674	YA90673	YA90654	YA90653	YA90634	YA90633
90	89	70	69	50	49	30	29	10	9
YA90716	YA90715	YA90696	YA90695	YA90676	YA90675	YA90656	YA90655	YA90636	YA90635
92	91	72	71	52	51	32	31	12	11
YA90718	YA90717	YA90698	YA90697	YA90678	YA90677	YA90658	YA90657	YA90638	YA90637
94	93	74	73	54	53	34	33	14	13
YA90720	YA90719	YA90700	YA90699	YA90680	YA90679	YA90660	YA90659	YA90640	YA90639
96	95	76	75	56	55	36	35	16	15
MR									
YA90722	YA90721	YA90702	YA90701	YA90682	YA90681	YA90662	YA90661	YA90642	YA90641
98	97	78	77	58	57	38	37	18	17
YA90724	YA90723	YA90704	YA90703	YA90684	YA90683	YA90664	YA90663	YA90644	YA90643
100	99	80	79	60	59	40	39	20	19
MR					MR				
YA90726	YA90725	YA90706	YA90705	YA90686	YA90685	YA90666	YA90665	YA90646	YA90645



131°00'

<b>UNITED KENO HILL MINES LTD.</b> EXPLORATION DEPARTMENT WHITEHORSE — YUKON	
<b>MR CLAIM MAP</b>	
Mining District WATSON LAKE N.T.S. Sheet No. 105-B-10 Scale Not to scale	
Drawn by H.D.P.	Date 87/03/19

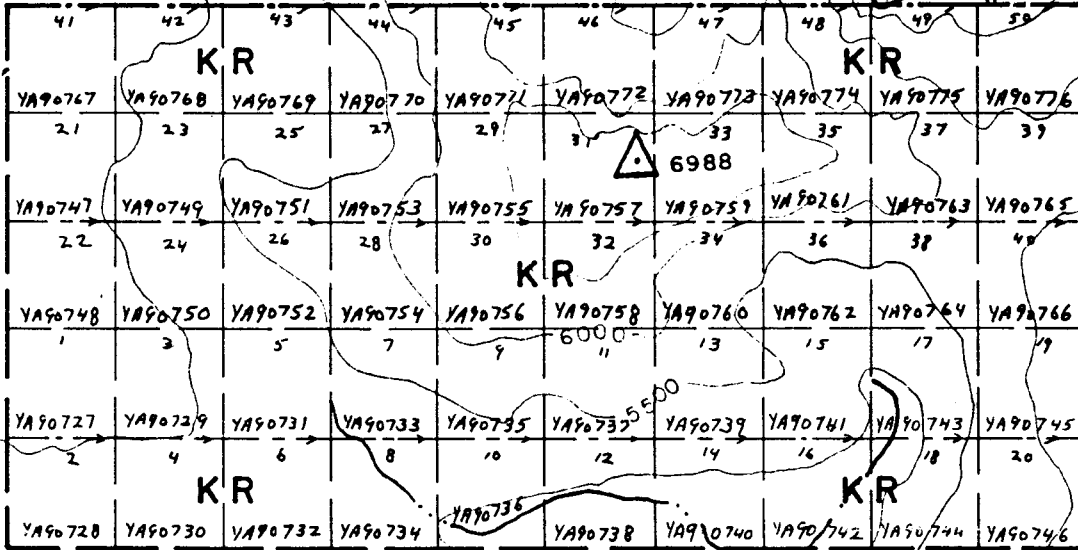
UNITED KENO HILL MINES LIMITED

The KR Group consists of 50 contiguous claims staked in April of 1986 as a five by ten block. The claims are as follows. Assessment work on the KR Property equals 5 years.

KR1	YA90727	KR14	YA90740	KR26	YA90752	KR39	YA90765
KR2	YA90728	KR15	YA90741	KR27	YA90753	KR40	YA90766
KR3	YA90729	KR16	YA90742	KR28	YA90754	KR41	YA90767
KR4	YA90730	KR16	YA90743	KR29	YA90755	KR42	YA90768
KR5	YA90731	KR17	YA90744	KR30	YA90756	KR43	YA90769
KR6	YA90732	KR18	YA90745	KR31	YA90757	KR44	YA90770
KR7	YA90733	KR19	YA90746	KR32	YA90758	KR45	YA90771
KR8	YA90734	KR20	YA90747	KR33	YA90759	KR46	YA90772
KR9	YA90735	KR21	YA90748	KR34	YA90760	KR47	YA90773
KR10	YA90736	KR22	YA90749	KR35	YA90761	KR48	YA90774
KR11	YA90737	KR23	YA90750	KR36	YA90762	KR49	YA90775
KR12	YA90738	KR24	YA90751	KR37	YA90763	KR50	YA90776
KR13	YA90739	KR25	YA90752	KR38	YA90764		

60°30'

131°00'



**UNITED KENO HILL MINES LTD.**  
 EXPLORATION DEPARTMENT  
 WHITEHORSE — YUKON

**KR CLAIM MAP**

*Mining District* WATSON LAKE  
*N.T.S. Sheet No.* 105-B-6  
*Scale* Not to scale

*Drawn by* H.D.P.

*Date* 87/03/19

UNITED KENO HILL MINES LIMITED

APPENDIX II  
PERSONNEL

Geological Mapping By:

Dennis Ouellette  
Box 4155  
Whitehorse, Yukon  
Y1A 3S9

Alan Coutts  
#4724 139th Street  
Edmonton, Alberta  
T6H 3Z2

Geological Assistance By:

Garth Thompson  
#11708 26th Avenue  
Edmonton, Alberta  
T6J 3R5

Brad Skeeles  
2962 West 30th Avenue  
Vancouver, British Columbia  
V6L 1V4

Thomas C. Stubens  
#102 1234 West 14th Ave.  
Vancouver, British Columbia  
V6H 1P9

Field Supervision By:

Dennis Ouellette  
As Above

UNITED KENO HILL MINES LIMITED

APPENDIX III  
SUPPORT

*Geochemical Analysis By:*

*Chemex Labs Limited  
212 Brooksbank Ave.  
North Vancouver, B.C.  
V7J 2C1*

*Bondar-Clegg & Company Limited  
136 Industrial Road  
Whitehorse, Yukon  
Y1A 2V1*

*Helicopter Support By:*

*Frontier Helicopters Limited  
Box 10  
Watson Lake, Yukon*

UNITED KENO HILL MINES LIMITED

APPENDIX IV  
COST BREAKDOWN

	COST	% TOTAL
GENERAL	\$37,602.00	59.16%
GEOLOGICAL	\$234.90	0.37%
GEOCHEMICAL	\$196.85	0.31%
GEOPHYSICAL	\$0.00	0.00%
ASSAYING	\$4,392.65	6.91%
TRENCHING	\$0.00	0.00%
CAMP OPERATIONS	\$4919.59	7.73%
AIRCRAFT CHARTER	\$15,745.66	24.78%
VEHICLES	\$470.00	0.74%
TOTALS	\$63,561.65	100.00%

UNITED KENO HILL MINES LIMITED

APPENDIX V  
ASSAY SHEETS

## ASSAY RESULT FORM

## MARKER LAKE AREA

DATE	TAG NO.	DESCRIPTION	AU opt	AG opt	PB %	ZN %	CU %	MO %	MO3 %		
27/07/86	14151	150m N of gulch green quartz carb	0.002	0.03	<0.01	<0.01	<0.01				
30/07/86	14152	300 N EAST END rusty felsic rock	<0.002	0.09	0.02	0.03	<0.01				
30/07/86	14153	240 W east zone sil contact zone	0.006	0.55	0.11	0.02	0.08				
30/07/86	14154	240 W west zone contact py, cp, pt	0.002	0.32	<0.01	0.01	0.51				
29/07/86	14155	KR31 KR 33 AC 051 vein str, alt soils	<0.002	0.23	0.05	0.17	0.01				
29/07/86	14156	KR32 KR11 AC 053 black mn, alt 1st.sk	<0.002	0.14	<0.01	0.06	<0.01				
30/07/86	14157	KR4 KR6 cirque arre lgar-dio-bio-qtz ska	<0.002	0.05	<0.01	0.02	<0.01				
30/07/86	14158	KR4 KR6 AC 055 Beryl shaped xtals	<2 ppm	<0.5 ppm	<1 ppm	<1.0 ppm	<5 ppm	0.02 ppm	<1 ppm	0.1 ppm	<0.005
30/07/86	14159	KR23 KR25 black Fe oxides @ contact	<0.002	0.22	<0.01	0.39	<0.01				
01/08/86	14160	marble o/c #3 main val. calcsil AC 057	<0.003	0.03	0.02	0.31	<0.01	<0.001			
02/08/86	14161	highly siliceous Mn calc-silicate AC 058	<0.003	0.05	<0.01	0.01	0.01	<0.001			
31/07/86	14162	DO 018A rusty skarn material	<0.003	0.07	<0.01	0.01	0.01	<0.01			
01/08/86	14163	DO 018B Calc-sil with garnet & pyrr	<0.003	0.01	<0.01	0.01	<0.01		<0.01		
31/07/86	14164	DO 017 Fault zone on E cirque. Leached	<0.003	<0.01	<0.01	0.01		<0.01			
01/08/86	14165	DO 020 Mang skarn lim, mang, goethite?	<0.003	0.09	<0.01	0.74					
02/08/86	14166	DO 030 Rusty bio musc gneiss/sch, py	<0.003	<0.01	<0.01	0.02	<0.01	<0.01			
02/08/86	14167	DO 031 Quartz float	<0.003	<0.01	<0.01	0.01					
02/08/86	14168	DO 032 Qtz carb., 5% sulphides (py, pyrr)	0.004	0.02	<0.01	0.01	<0.01	<0.01	<0.01		

29/07/86	14169	AC 052	W	Sn	Be	La	Nd	Sm	Ce	Lu	Eu
		altered pegmatite	5 ppm	1 ppm	7 ppm	6 ppm	8 ppm	13.1 ppm	15 ppm	0.2 ppm	<0.5 ppm
			Yb	Tb	Ta	Nb (XRF)					
			0.7 ppm	<1 ppm	2	<20 ppm					
-----											
02/08/86	14170	GT 003 Mn stained									
		calc-silicate, pyrr	<0.003	0.03	<0.01	0.01	<0.01				

DATE	TAG NO.	DESCRIPTION	AU opt	AG opt	PB %	ZN %	CU %	MO %	W03 %
02/08/86	14174	MR-AC070 N. RIDGE VUGGY QTZ MN FE VEIN TYPE MATERIAL	<0.002	5.13	0.50	0.48	0.01		
16/08/86	14175	IMRO-006 green silic. f.g. vuggy w lia.	<0.002	0.57	0.10	0.04	<0.01		
10/08/86	14251	IMR AC059 near upper cirque stream. Calc- sil. Brecc. pyrite	<0.002	0.17	0.05	0.01	<0.01		
10/08/86	14252	IMR AC060 upper cirq Volcanic extrusive rhyolite. Red weath.	<0.002	0.03	0.04	0.01	<0.01		
10/09/86	14253	IMR AC061 S. of rhyol Red & Yellow weather qtz vein. Some min.	<0.002	1.78	0.05	0.01	0.04		
12/08/86	14254	MR AC063 talus W. side. Qtz V in Qtz Abundant pyrr	<0.002	0.07	0.02	<0.01	<0.01		
12/08/86	14255	IMR AC064 N extent W side. Diss.gal float	<0.002	0.80	0.88	2.51	<0.01		
12/08/86	14256	IMR AC065 N extent W side. Mn coated nodul of qtz & cal. Float	<0.002	0.52	0.21	0.41	<0.01		
12/08/86	14257	IMR AC066 N extent W side. Calc-sil W dist gal w Mn staining	<0.002	4.02	0.52	1.32	0.01		
16/08/86	14176	MR Qtz in seds. w Diss. py & pyrr.	<0.002	0.09	0.04	0.01	0.01		
16/08/86	14177	MR alt. qtz pyrite float boulder	<0.002	0.17	0.02	0.02	<0.01		



# Chemex Labs Ltd.

Analytical Chemists

Geochemists

Registered Assayers

212 Brooksbank Ave.  
North Vancouver, B.C.  
Canada V7J2C1

Phone: (604) 984-0221  
Telex: 043-52597

## CERTIFICATE OF ANALYSIS

TO : UNITED KENO HILL MINES LIMITED

409 BLACK ST.  
WHITEHORSE, YUKON  
Y1A 2N2

CERT. # : A8616675-003-A  
INVOICE # : I8616675  
DATE : 1-SEP-86  
P.O. # : NONE  
MARKER LAKE SOIL

Semi quantitative multi element ICP analysis

Nitric-Aqua-Regia digestion of 0.5 gm of material followed by ICP analysis. Since this digestion is incomplete for many minerals, values reported for Al, Sb, Ba, Be, Ca, Cr, Ga, La, Mg, K, Na, Sr, Ti, W and V can only be considered as semi-quantitative.

COMMENTS :  
ATTN: DENNIS OUELLETTE

Sample description	Au NAA ppb	Al %	Ag ppm	As ppm	Ba ppm	Be ppm	Bi ppm	Ca %	Cd ppm	Co ppm	Cr ppm	Cu ppm	Fe %	Ga ppm	K %	La ppm	Mg %	Mn ppm	Mo ppm	Na %	Ni ppm	P ppm	Pb ppm	Sb ppm	Sr ppm	Ti %	Tl ppm	U ppm	V ppm	W ppm	Zn ppm	
94207	<1	2.29	0.2	10	40	<0.5	<2	4.51	<0.5	24	44	49	3.58	30	0.10	30	0.46	351	1	0.14	63	1250	20	<10	446	0.09	<10	<10	20	<10	126	--
94208	<1	2.74	0.2	10	70	<0.5	<2	3.92	<0.5	28	59	56	5.70	30	0.45	40	0.71	393	<1	0.14	73	970	18	<10	318	0.11	<10	<10	30	<10	102	--
94209	2	2.92	0.2	10	80	<0.5	<2	3.76	<0.5	32	63	55	5.49	30	0.51	40	0.78	402	<1	0.16	79	950	20	<10	324	0.14	<10	<10	35	<10	132	--
94210	<1	3.04	0.2	10	170	<0.5	<2	0.69	<0.5	37	66	65	6.60	10	0.91	70	1.09	489	1	0.07	84	1080	16	<10	101	0.16	<10	<10	43	<10	116	--
94211	<1	2.45	1.0	10	120	<0.5	<2	0.80	<0.5	23	52	45	4.78	20	0.66	60	0.90	429	1	0.03	57	1170	30	<10	83	0.10	10	<10	30	<10	158	--
94213	<1	2.50	0.4	10	130	<0.5	<2	0.87	<0.5	23	53	45	4.67	10	0.69	50	0.95	349	<1	0.04	57	1110	22	<10	101	0.11	<10	<10	32	<10	128	--
94214	<1	2.42	0.6	10	170	<0.5	<2	0.67	<0.5	19	53	38	4.34	10	0.75	60	0.90	291	<1	0.03	49	1170	20	<10	62	0.13	<10	<10	35	<10	112	--
94215	<1	2.71	0.2	10	200	<0.5	<2	0.49	<0.5	22	56	40	4.57	10	0.94	30	1.06	293	<1	0.03	55	600	18	<10	56	0.16	<10	<10	40	<10	110	--
94216	<1	3.03	0.2	10	200	<0.5	<2	0.72	<0.5	36	55	68	5.15	10	0.82	40	1.05	436	<1	0.03	81	550	22	<10	71	0.13	<10	<10	39	<10	134	--
94217	<1	2.43	0.4	10	160	<0.5	<2	1.21	<0.5	16	50	41	4.18	10	0.71	30	0.89	244	<1	0.03	45	910	14	<10	91	0.14	<10	<10	36	<10	110	--
94218	2	2.46	2.2	10	150	<0.5	<2	0.93	<0.5	15	48	35	3.81	10	0.62	30	0.85	209	<1	0.04	47	1100	14	<10	85	0.14	<10	<10	31	<10	82	--
94219	2	2.05	0.2	10	140	<0.5	<2	2.09	<0.5	22	40	48	3.52	10	0.42	20	0.66	350	<1	0.02	53	730	18	<10	133	0.09	<10	<10	26	<10	92	--
94221	<1	2.76	0.2	<10	180	<0.5	<2	0.54	<0.5	23	56	40	4.66	10	0.88	40	1.02	368	<1	0.04	52	800	16	<10	64	0.16	<10	<10	38	<10	88	--
94223	2	2.81	0.2	10	110	<0.5	<2	0.39	<0.5	31	55	62	5.12	10	0.63	60	1.05	576	<1	0.02	83	1120	24	<10	35	0.07	<10	<10	31	<10	80	--
94224	2	2.70	0.2	10	150	<0.5	<2	0.91	<0.5	21	55	44	4.70	10	0.58	30	0.91	395	<1	0.03	59	880	18	<10	85	0.13	<10	<10	38	<10	110	--
94225	1	3.21	0.4	10	170	<0.5	<2	0.70	<0.5	24	65	45	5.27	10	0.76	40	1.10	488	<1	0.03	60	680	24	<10	82	0.17	<10	<10	45	<10	142	--
94226	2	2.69	0.4	10	170	<0.5	<2	0.43	<0.5	20	54	40	4.67	10	0.71	40	0.94	455	<1	0.02	48	800	26	<10	37	0.13	<10	<10	36	<10	142	--
94228	<1	2.64	0.4	10	160	<0.5	<2	0.40	<0.5	18	57	34	4.98	10	0.60	80	0.95	531	<1	0.02	42	1340	28	<10	26	0.11	<10	<10	36	<10	166	--
94229	<1	2.84	0.2	10	130	<0.5	<2	1.73	<0.5	17	61	34	4.58	20	0.49	30	0.94	460	<1	0.05	43	840	24	<10	170	0.15	<10	<10	43	<10	138	--
94230	<1	2.45	0.6	20	120	<0.5	<2	2.01	<0.5	17	46	55	3.91	20	0.22	40	0.70	695	<1	0.02	40	1170	24	<10	151	0.06	<10	<10	30	<10	168	--
94231	<1	2.10	0.2	10	90	<0.5	<2	0.87	<0.5	12	35	23	3.14	10	0.19	30	0.58	418	<1	0.04	28	1040	14	<10	93	0.07	<10	<10	25	<10	112	--
94232	<1	2.92	0.2	<10	140	<0.5	<2	0.52	<0.5	19	54	26	4.57	10	0.47	30	0.91	500	<1	0.03	46	750	16	<10	96	0.15	<10	<10	40	<10	120	--
94233	<1	2.68	0.2	10	140	<0.5	<2	0.25	<0.5	15	52	31	4.38	<10	0.63	30	0.95	307	<1	0.01	41	1010	16	<10	18	0.13	<10	<10	38	<10	96	--
94234	<1	3.40	0.2	10	200	<0.5	<2	0.52	<0.5	21	65	52	5.23	10	0.90	50	1.23	374	<1	0.02	57	920	18	<10	34	0.15	<10	<10	43	<10	128	--
94235	<1	3.29	0.2	10	210	<0.5	<2	0.26	<0.5	20	66	26	5.14	10	0.89	40	1.21	449	<1	0.02	49	500	14	<10	53	0.23	<10	<10	49	<10	120	--

Certified by *[Signature]*



# Chemex Labs Ltd.

Analytical Chemists

Geochemists

Registered Assayers

212 Brooksbank Ave.  
North Vancouver, B.C.  
Canada V7J2C1

Phone: (604) 984-0221  
Telex: 043-52597

## CERTIFICATE OF ANALYSIS

TO: UNITED KENO HILL MINES LIMITED

409 BLACK ST.  
WHITEHORSE, YUKON  
Y1A 2N2

CERT. # : AB616675-002-A  
INVOICE # : I8616675  
DATE : 1-SEP-86  
P.O. # : NONE  
MARKER LAKE SOIL

Semi quantitative multi element ICP analysis

Nitric-Aqua-Regia digestion of 0.5 gm of material followed by ICP analysis. Since this digestion is incomplete for many minerals, values reported for Al, Sb, Ba, Be, Ca, Cr, Ga, La, Mg, K, Na, Sr, Tl, Ti, W and V can only be considered as semi-quantitative.

COMMENTS :  
ATTN: DENNIS OUELLETTE

Sample description	Au NAA ppb	Al %	Ag ppm	As ppm	Ba ppm	Be ppm	Bi ppm	Ca %	Cd ppm	Co ppm	Cr ppm	Cu ppm	Fe %	Ga ppm	K %	La ppm	Hg %	Mn ppm	Mo ppm	Na %	Ni ppm	P ppm	Pb ppm	Sb ppm	Sr ppm	Ti %	Tl ppm	U ppm	V ppm	W ppm	Zn ppm	
94119	5	2.35	0.4	10	110	<0.5	<2	0.32	<0.5	12	46	20	3.97	<10	0.63	30	0.73	621	<1	0.01	39	540	26	<10	50	0.17	<10	<10	38	<10	138	--
94120	<1	2.88	0.2	10	190	<0.5	<2	0.45	<0.5	15	61	30	4.29	10	0.85	40	0.98	585	<1	0.02	41	490	26	<10	66	0.22	<10	<10	43	<10	142	--
94121	1	0.83	0.6	30	40	<0.5	<2	11.05	<0.5	10	31	22	2.24	30	0.14	<10	0.97	488	<1	0.02	23	1050	22	<10	563	0.03	<10	<10	10	<10	56	--
94122	<1	2.48	0.2	10	200	<0.5	<2	0.13	<0.5	6	43	36	5.11	<10	1.32	30	0.86	311	1	0.05	15	670	20	<10	48	0.21	<10	<10	35	<10	96	--
94123	<1	1.93	0.8	10	140	<0.5	<2	0.06	<0.5	6	36	23	4.05	<10	0.78	20	0.59	307	1	0.02	14	700	30	<10	27	0.19	<10	<10	38	<10	112	--
94124	<1	1.37	0.2	<10	80	<0.5	<2	0.05	<0.5	4	25	15	2.88	<10	0.34	20	0.33	547	1	0.02	10	800	16	<10	19	0.11	<10	<10	37	<10	72	--
94125	<1	2.40	0.4	10	160	<0.5	<2	0.04	<0.5	7	45	35	4.68	<10	0.75	20	0.65	329	2	0.02	15	1150	16	<10	34	0.17	<10	<10	44	<10	86	--
94126	<1	2.28	1.2	10	170	<0.5	<2	0.08	<0.5	10	40	33	4.49	<10	0.96	20	0.70	547	1	0.03	16	990	22	<10	54	0.18	<10	<10	35	<10	106	--
94127	<1	2.21	0.4	10	180	<0.5	<2	0.12	<0.5	7	41	35	4.94	<10	1.14	20	0.82	410	1	0.04	16	1100	28	<10	44	0.19	<10	<10	35	<10	122	--
94128	<1	2.28	0.6	10	80	<0.5	<2	0.09	<0.5	14	28	29	4.79	<10	0.32	30	0.33	458	<1	0.01	38	960	104	<10	7	0.03	<10	<10	15	<10	886	--
94129	1	1.71	1.8	10	110	<0.5	<2	0.06	<0.5	6	29	23	3.38	<10	0.46	10	0.48	384	<1	0.02	15	740	34	<10	28	0.11	<10	<10	29	<10	134	--
94130	<1	2.06	0.2	10	100	<0.5	<2	0.19	<0.5	8	37	18	3.55	<10	0.24	10	0.47	426	<1	0.02	20	770	24	<10	39	0.12	<10	<10	39	<10	118	--
94131	<1	1.66	0.2	10	70	<0.5	<2	0.05	<0.5	4	28	16	1.97	<10	0.22	10	0.43	143	<1	0.02	12	610	14	<10	20	0.08	<10	<10	25	<10	64	--
94132	<1	1.33	0.2	<10	50	<0.5	<2	0.03	<0.5	4	20	20	2.53	<10	0.21	10	0.31	148	1	0.03	12	610	18	<10	18	0.07	<10	<10	25	<10	70	--
94133	<1	2.83	0.4	10	160	<0.5	<2	0.07	<0.5	11	57	26	5.02	<10	0.95	20	0.95	664	1	0.02	34	700	28	<10	46	0.22	<10	<10	48	<10	132	--
94134	5	3.13	0.6	<10	320	<0.5	<2	0.06	<0.5	12	57	54	6.75	<10	1.36	30	1.09	475	1	0.05	27	630	24	<10	43	0.26	<10	<10	45	<10	128	--
94135	<1	2.59	0.2	10	150	<0.5	<2	0.26	<0.5	15	56	37	4.95	<10	0.73	30	0.87	487	1	0.01	36	630	30	<10	49	0.18	<10	<10	41	<10	152	--
94136	<1	1.99	0.8	10	100	<0.5	<2	0.62	<0.5	16	45	29	4.40	10	0.34	40	0.65	820	1	0.01	44	820	54	<10	57	0.09	<10	<10	26	<10	288	--
94137	<1	2.76	0.4	10	150	<0.5	<2	0.18	<0.5	16	52	33	4.74	<10	0.71	20	0.85	576	1	0.01	36	520	32	<10	36	0.16	<10	<10	36	<10	192	--
94138	<1	2.48	0.6	10	130	<0.5	<2	0.79	<0.5	13	45	40	4.91	10	0.47	30	0.73	633	1	0.02	31	940	38	<10	121	0.11	<10	<10	29	<10	170	--
94139	<1	2.91	0.4	10	90	<0.5	<2	3.31	<0.5	17	60	32	4.05	20	0.26	30	0.86	428	<1	0.15	42	1040	16	<10	351	0.14	<10	<10	39	<10	92	--
94140	<1	2.96	0.6	10	90	<0.5	<2	5.60	<0.5	16	63	29	3.59	30	0.43	10	0.91	356	<1	0.17	39	860	16	<10	458	0.15	<10	<10	36	<10	76	--
94141	<1	2.42	0.4	20	60	<0.5	<2	9.53	<0.5	15	50	26	3.14	40	0.27	<10	0.87	265	<1	0.14	34	730	10	<10	591	0.11	<10	<10	22	<10	52	--
94142	<1	0.95	0.6	20	30	<0.5	<2	10.49	<0.5	6	30	19	1.49	40	0.06	<10	0.30	214	<1	0.05	17	1030	14	<10	535	0.02	<10	<10	9	<10	50	--
94143	<1	1.86	0.2	10	80	<0.5	<2	2.50	<0.5	12	32	19	2.62	10	0.19	20	0.49	294	<1	0.07	28	980	8	<10	230	0.07	<10	<10	22	<10	64	--
94144	<1	3.99	0.4	10	70	<0.5	<2	2.15	<0.5	15	71	26	3.59	20	0.44	30	0.93	407	1	0.07	39	680	14	<10	274	0.10	<10	<10	36	<10	84	--
94145	<1	3.77	0.2	10	90	<0.5	<2	1.89	<0.5	22	60	33	4.17	20	0.38	50	0.91	378	<1	0.15	52	910	16	<10	294	0.16	<10	<10	34	<10	102	--
94146	<1	3.40	0.6	10	50	<0.5	<2	6.45	<0.5	19	51	27	3.44	40	0.20	<10	0.63	463	1	0.18	42	1060	14	<10	753	0.10	<10	<10	19	<10	56	--
94147	<1	4.44	0.6	10	40	<0.5	<2	7.56	<0.5	27	76	40	4.51	40	0.20	<10	0.76	272	<1	0.48	61	600	10	<10	683	0.15	<10	<10	37	<10	88	--
94148	<1	4.52	0.4	10	50	<0.5	<2	3.84	<0.5	22	75	34	4.14	30	0.29	50	0.74	517	1	0.39	56	950	18	<10	604	0.16	<10	<10	38	<10	90	--
94149	3	1.49	0.6	10	30	<0.5	<2	9.41	<0.5	15	48	31	2.70	30	0.11	<10	0.33	381	<1	0.07	41	1040	16	<10	341	0.04	<10	<10	19	<10	50	--
94150	<1	3.13	0.4	10	200	<0.5	<2	0.66	<0.5	19	61	49	6.12	10	1.23	40	1.02	309	<1	0.11	49	780	10	<10	107	0.21	<10	<10	46	<10	98	--
94151	<1	4.20	0.2	10	140	<0.5	<2	0.99	<0.5	31	68	80	8.41	20	0.76	60	1.15	454	1	0.29	69	840	16	<10	442	0.17	<10	<10	51	<10	98	--
94152	<1	3.66	0.2	<10	340	<0.5	<2	0.25	<0.5	20	90	67	6.92	10	1.84	40	1.44	306	<1	0.07	39	820	12	<10	51	0.29	<10	<10	68	<10	104	--
94201	<1	4.47	0.4	10	140	<0.5	<2	2.07	<0.5	17	90	25	4.39	20	0.43	40	1.37	555	1	0.14	34	1060	12	<10	205	0.26	<10	<10	56	<10	92	--
94202	<1	3.00	0.6	20	110	<0.5	<2	3.19	<0.5	20	66	51	4.91	20	0.29	30	0.97	431	1	0.11	48	1320	20	<10	257	0.16	<10	<10	50	<10	116	--
94203	<1	2.31	0.4	20	110	<0.5	<2	3.72	<0.5	16	49	49	3.68	20	0.23	30	0.80	607	<1	0.09	42	1600	20	<10	291	0.09	<10	<10	33	<10	92	--
94204	<1	3.38	0.6	10	50	<0.5	<2	7.62	<0.5	35	69	53	6.10	40	0.13	20	0.67	764	<1	0.25	78	1510	22	<10	753	0.13	<10	<10	27	<10	104	--
94205	<1	2.87	0.4	10	50	<0.5	<2	10.71	<0.5	25	71	48	4.86	50	0.29	<10	0.84	338	<1	0.22	56	1000	20	<10	789	0.15	<10	<10	28	<10	90	--
94206	<1	4.42	0.4	10	10	<0.5	<2	12.14	<0.5	75	67	66	6.10	60	0.09	<10	0.33	251	<1	0.48	102	1260	8	<10	1241	0.10	<10	<10	20	<10	24	--



# Chemex Labs Ltd.

Analytical Chemists    Geochemists    Registered Assayers

212 Brooksbank Ave.  
North Vancouver, B.C.  
Canada    V7J 2C1

Phone: (604) 984-0221  
Telex: 043-52597

Semi quantitative multi element ICP analysis

## CERTIFICATE OF ANALYSIS

TO : UNITED KENO HILL MINES LIMITED

409 BLACK ST.  
WHITEHORSE, YUKON  
Y1A 2N2

CERT. # : A8616675-001-A  
INVOICE # : 18616675  
DATE : 1-SEP-86  
P.O. # : NONE  
~~WATER LAKE SOIL~~

Nitric-Aqua-Regia digestion of 0.5 gm of material followed by ICP analysis. Since this digestion is incomplete for many minerals, values reported for Al, Sb, Ba, Be, Ca, Cr, Ga, La, Mg, K, Na, Sr, Ti, Tl, W and V can only be considered as semi-quantitative.

COMMENTS :  
ATTN: DENNIS OUELLETTE

Sample description	Au NAA ppb	Al %	Ag ppm	As ppm	Ba ppm	Be ppm	Bi ppm	Ca %	Cd ppm	Co ppm	Cr ppm	Cu ppm	Fe %	Ga ppm	K %	La ppm	Hg %	Mn ppm	Mo ppm	Na %	Ni ppm	P ppm	Pb ppm	Sb ppm	Sr ppm	Ti %	Tl ppm	U ppm	V ppm	W ppm	Zn ppm	
94078	<1	2.03	0.2	10	110	<0.5	<2	0.18	<0.5	9	35	14	2.47	10	0.48	70	0.54	443	<1	0.01	20	600	18	<10	16	0.12	10	<10	30	<10	94	--
94079	<1	2.33	0.2	<10	130	<0.5	<2	0.07	<0.5	9	31	17	2.75	10	0.51	50	0.52	319	<1	0.01	21	520	16	<10	9	0.13	<10	<10	28	<10	72	--
94080	3	3.55	0.2	<10	180	<0.5	<2	0.05	<0.5	18	39	32	4.27	10	0.65	50	0.68	656	<1	0.01	49	840	28	<10	17	0.15	<10	<10	32	<10	110	--
94081	1	1.70	0.2	<10	100	<0.5	<2	0.11	<0.5	9	37	15	2.86	<10	0.37	30	0.49	371	<1	<0.01	20	440	16	<10	12	0.14	<10	<10	42	<10	74	--
94082	<1	3.87	0.6	<10	200	1.0	<2	0.30	<0.5	16	64	28	4.09	10	0.55	30	1.00	607	<1	0.01	43	690	24	<10	52	0.14	<10	<10	42	<10	120	--
94083	<1	4.02	0.4	<10	210	0.5	<2	0.31	<0.5	12	56	22	3.79	10	0.57	30	0.84	534	<1	0.01	45	940	24	<10	57	0.13	<10	<10	40	<10	136	--
94084	<1	2.22	0.2	10	150	<0.5	<2	0.23	<0.5	12	47	28	4.23	10	0.58	20	0.75	465	<1	0.01	24	760	16	<10	42	0.18	<10	<10	43	<10	98	--
94085	<1	2.59	0.2	10	110	<0.5	<2	0.19	<0.5	12	44	18	3.59	10	0.35	30	0.89	547	<1	<0.01	28	560	20	<10	30	0.13	<10	<10	36	<10	102	--
94086	<1	2.10	0.8	10	90	<0.5	<2	0.53	<0.5	12	37	29	3.52	10	0.29	40	0.65	615	<1	<0.01	33	650	32	<10	48	0.06	<10	<10	24	<10	138	--
94087	<1	2.29	0.2	10	80	<0.5	<2	0.56	<0.5	11	41	23	3.57	10	0.24	30	0.70	384	<1	0.01	32	710	32	<10	53	0.09	<10	<10	28	<10	134	--
94088	<1	2.83	0.2	10	140	<0.5	<2	0.24	<0.5	16	56	22	4.25	10	0.44	20	0.88	715	<1	0.01	38	440	24	<10	26	0.18	<10	<10	50	<10	108	--
94089	<1	2.29	0.4	10	150	<0.5	<2	0.06	<0.5	15	53	44	4.71	<10	0.82	30	0.83	398	<1	0.02	41	530	26	<10	14	0.17	<10	<10	39	<10	90	--
94090	3	2.24	0.8	20	100	<0.5	<2	0.94	<0.5	19	44	39	4.40	10	0.34	20	0.72	810	<1	0.01	49	860	46	<10	68	0.11	<10	10	31	<10	174	--
94091	<1	3.29	0.4	10	110	<0.5	<2	2.86	<0.5	17	64	28	4.36	20	0.43	30	1.13	369	<1	0.15	43	870	16	<10	311	0.17	<10	<10	47	<10	104	--
94092	<1	2.96	0.2	<10	260	<0.5	<2	0.04	<0.5	8	72	37	5.11	10	1.21	20	1.01	457	<1	0.03	18	480	12	<10	18	0.24	<10	<10	58	<10	90	--
94093	<1	0.67	0.4	<10	50	<0.5	<2	0.21	<0.5	2	11	5	1.31	<10	0.09	10	0.15	178	<1	0.05	4	350	6	<10	17	0.07	<10	<10	26	<10	22	--
94094	<1	0.97	0.8	30	100	<0.5	<2	1.49	<0.5	12	14	24	3.65	<10	0.12	10	0.30	1287	<1	<0.01	37	1210	26	<10	101	0.02	<10	<10	11	<10	172	--
94095	<1	1.63	0.4	40	80	<0.5	<2	0.68	<0.5	21	31	27	4.54	<10	0.22	20	0.51	744	<1	0.01	50	1050	54	<10	51	0.07	<10	<10	24	<10	168	--
94096	<1	2.16	0.6	10	90	<0.5	<2	0.71	<0.5	12	44	21	3.98	<10	0.35	20	0.74	417	<1	0.01	34	660	36	<10	54	0.12	<10	<10	33	<10	148	--
94097	<1	2.39	1.0	20	110	<0.5	<2	0.80	<0.5	17	51	53	4.46	10	0.48	20	0.82	481	<1	0.01	48	760	36	<10	56	0.14	<10	<10	37	<10	138	--
94098	<1	2.61	0.4	10	150	<0.5	<2	0.48	<0.5	11	58	29	4.25	10	0.66	30	0.98	383	<1	0.02	33	570	26	<10	49	0.17	<10	<10	43	<10	104	--
94099	<1	2.68	1.0	<10	170	<0.5	<2	0.57	<0.5	10	61	36	4.22	10	0.90	30	1.03	369	<1	0.03	29	590	50	<10	56	0.19	<10	<10	51	<10	142	--
94100	<1	2.76	0.4	<10	160	<0.5	<2	0.85	<0.5	17	58	40	4.26	10	0.90	30	1.15	460	<1	0.04	35	680	18	<10	76	0.20	<10	<10	48	<10	98	--
94101	<1	1.02	0.6	<10	60	<0.5	<2	5.64	<0.5	9	25	43	1.91	10	0.09	<10	0.44	541	<1	0.02	20	1400	14	<10	342	0.03	<10	<10	16	<10	52	--
94103	<1	3.52	0.4	<10	180	<0.5	<2	0.25	<0.5	16	70	34	4.77	10	0.51	40	1.07	454	<1	0.01	42	490	22	<10	31	0.22	<10	<10	57	<10	108	--
94104	<1	2.48	1.2	<10	110	<0.5	<2	0.15	<0.5	11	44	40	4.70	10	0.51	40	0.73	491	<1	0.01	29	670	62	<10	38	0.13	<10	<10	34	<10	238	--
94105	<1	2.63	0.2	<10	140	<0.5	<2	0.18	<0.5	16	45	38	4.89	10	0.42	40	0.78	519	<1	0.01	35	640	32	<10	81	0.15	<10	<10	37	<10	158	--
94106	<1	2.67	0.6	<10	160	<0.5	<2	0.47	<0.5	12	54	38	4.52	10	0.73	30	0.91	476	<1	0.02	35	570	36	<10	74	0.16	<10	<10	39	<10	174	--
94107	<1	2.93	0.4	<10	230	<0.5	<2	0.23	<0.5	22	77	49	5.41	10	1.24	50	1.19	506	<1	0.04	55	920	24	<10	54	0.24	<10	<10	51	<10	150	--
94108	<1	2.65	0.2	<10	180	<0.5	<2	0.17	<0.5	17	56	44	4.66	10	0.99	40	0.98	456	<1	0.02	37	520	20	<10	33	0.19	<10	<10	42	<10	122	--
94109	<1	2.51	0.4	<10	200	<0.5	<2	0.29	<0.5	16	70	49	4.75	10	1.00	60	1.05	456	<1	0.02	43	920	30	<10	54	0.19	<10	<10	47	<10	136	--
94110	2	3.09	0.6	10	240	<0.5	<2	0.45	<0.5	24	67	52	5.11	20	1.28	60	1.07	687	<1	0.03	52	760	48	<10	66	0.23	<10	<10	49	<10	220	--
94111	<1	3.24	0.4	<10	160	<0.5	<2	1.43	<0.5	17	73	42	4.27	20	0.75	30	1.04	480	<1	0.05	45	910	26	<10	405	0.17	<10	<10	46	<10	216	--
94112	<1	3.39	0.2	<10	120	<0.5	<2	1.25	<0.5	21	76	40	4.73	20	0.52	50	0.93	575	<1	0.07	67	840	46	<10	219	0.12	<10	<10	45	<10	144	--
94113	<1	2.53	0.2	<10	90	<0.5	<2	2.94	<0.5	16	77	23	3.60	20	0.57	20	1.08	745	<1	0.05	49	780	26	<10	267	0.15	<10	<10	39	<10	176	--
94114	<1	2.73	0.6	10	130	<0.5	<2	0.65	<0.5	27	55	38	3.99	10	0.65	30	0.89	864	<1	0.02	76	760	32	<10	77	0.16	<10	<10	38	<10	230	--
94115	<1	2.67	0.6	<10	200	<0.5	<2	0.50	0.5	19	53	37	4.24	10	0.56	30	0.95	574	<1	0.02	47	700	26	<10	55	0.19	<10	<10	40	<10	176	--
94116	<1	2.20	1.0	<10	120	<0.5	<2	0.12	<0.5	12	44	27	3.94	10	0.52	30	0.62	1117	<1	0.01	26	830	52	<10	28	0.13	<10	<10	45	<10	190	--
94117	<1	2.82	0.4	<10	180	<0.5	<2	0.36	<0.5	14	62	30	3.96	10	0.71	40	0.98	501	<1	0.02	36	650	20	<10	53	0.20	<10	<10	42	<10	136	--
94118	<1	1.96	1.2	20	130	<0.5	<2	0.09	<0.5	8	32	32	3.60	10	0.60	40	0.54	304	<1	0.02	22	690	54	<10	63	0.10	<10	<10	30	<10	118	--

Certified by *H. B. S. S. S.*



# Chemex Labs Ltd.

\*Analytical Chemists    \*Geochemists    \*Registered Assayers

212 Brooksbank Ave.  
North Vancouver, B.C.  
Canada    V7J2C1

Phone: (604) 984-0221  
Telex: 043-52597

## CERTIFICATE OF ANALYSIS

TO : UNITED KENO HILL MINES LIMITED

409 BLACK ST.  
WHITEHORSE, YUKON  
Y1A 2N2

CERT. # : A8617167-002-A  
INVOICE # : I8617167  
DATE : 8-SEP-86  
P.O. # : NONE  
MARKER LAKE

Semi quantitative multi element ICP analysis

Nitric-Aqua-Regia digestion of 0.5 gm of material followed by ICP analysis. Since this digestion is incomplete for many minerals, values reported for Al, Sb, Ba, Be, Ca, Cr, Ga, La, Mg, K, Na, Sr, Ti, W and V can only be considered as semi-quantitative.

COMMENTS :

Sample description	Au NAA ppb	Al %	Ag ppm	As ppm	Ba ppm	Be ppm	Bi ppm	Ca %	Cd ppm	Co ppm	Cr ppm	Cu ppm	Fe %	Ga ppm	K %	La ppm	Mg %	Mn ppm	Mo ppm	Na %	Ni ppm	P ppm	Pb ppm	Sb ppm	Sr ppm	Ti %	Tl ppm	U ppm	V ppm	W ppm	Zn ppm	
C 94533	<1	0.88	0.8	90	70	<0.5	2	0.07	<0.5	3	11	26	2.58	<10	0.19	20	0.13	535	1	0.01	6	560	292	<10	52	<0.01	<10	<10	13	<10	166	--
C 94534	2	1.01	0.2	10	40	<0.5	2	0.03	<0.5	2	14	15	2.00	<10	0.12	40	0.11	122	1	<0.01	7	280	20	<10	13	0.05	<10	<10	33	<10	42	--
C 94535	<1	1.89	0.4	20	50	<0.5	4	0.12	<0.5	11	31	39	3.12	10	0.19	30	0.44	554	3	<0.01	27	760	110	<10	20	<0.01	<10	<10	19	<10	184	--
C 94536	<1	1.36	0.4	40	70	<0.5	2	0.14	<0.5	7	12	13	1.78	<10	0.16	20	0.16	590	1	<0.01	7	570	32	<10	27	<0.01	<10	<10	14	<10	66	--
C 94537	<1	1.37	0.2	40	80	<0.5	2	0.14	<0.5	7	11	13	1.79	<10	0.15	20	0.16	593	1	<0.01	7	570	28	<10	27	<0.01	<10	<10	14	<10	64	--
C 94538	<1	1.56	0.2	20	60	<0.5	4	0.11	<0.5	7	22	16	2.48	<10	0.23	20	0.41	297	<1	<0.01	16	640	18	<10	36	0.06	<10	<10	27	<10	64	--
C 94539	2	2.41	0.6	80	110	<0.5	2	0.34	<0.5	16	38	41	3.95	10	0.34	20	0.65	660	1	0.01	32	630	38	<10	53	0.02	<10	<10	29	<10	110	--
C 94540	<1	1.15	0.6	80	50	<0.5	2	0.08	<0.5	4	17	23	2.55	<10	0.27	30	0.27	201	2	0.01	8	320	30	<10	42	0.03	<10	<10	31	<10	50	--
C 94541	<1	2.01	1.2	50	100	1.5	2	0.46	<0.5	4	11	10	2.03	10	0.15	60	0.28	391	1	0.01	5	1420	54	<10	56	<0.01	10	10	13	<10	100	--
C 94542	2	2.37	1.2	50	150	1.5	2	0.81	<0.5	4	11	11	2.30	10	0.16	40	0.28	574	<1	<0.01	6	1450	88	<10	73	<0.01	<10	<10	16	<10	132	--
C 94543	<1	1.78	0.8	10	110	0.5	2	0.52	<0.5	4	7	12	1.68	<10	0.15	30	0.27	384	<1	<0.01	6	910	42	<10	64	<0.01	<10	<10	13	<10	114	--
C 94544	<1	1.31	0.4	10	60	<0.5	2	0.17	<0.5	5	18	9	2.07	10	0.26	30	0.30	283	<1	<0.01	7	890	38	<10	34	0.01	<10	<10	19	<10	90	--
C 94545	<1	1.84	0.4	40	130	0.5	2	0.67	<0.5	5	12	11	2.40	10	0.23	30	0.31	894	2	<0.01	7	820	52	<10	83	<0.01	<10	<10	14	<10	120	--
C 94546	1	1.01	0.2	20	60	<0.5	<2	0.25	<0.5	3	7	4	1.75	10	0.15	40	0.24	420	<1	<0.01	3	790	30	<10	43	<0.01	<10	<10	10	<10	72	--
C 94547	3	1.20	0.2	50	90	<0.5	4	0.43	<0.5	6	8	9	2.32	10	0.23	40	0.37	555	1	<0.01	3	1260	32	<10	54	<0.01	<10	<10	16	<10	88	--
C 94548	<1	0.78	0.2	40	30	1.0	<2	0.27	<0.5	1	3	4	1.11	<10	0.16	20	0.06	527	<1	<0.01	1	690	56	<10	28	<0.01	<10	<10	<1	<10	72	--
C 94600	<1	0.89	0.6	30	70	<0.5	2	0.46	<0.5	3	10	15	2.62	10	0.15	50	0.29	274	<1	<0.01	2	1850	34	<10	18	<0.01	<10	<10	24	<10	34	--
C 94608	<1	1.25	0.2	10	90	<0.5	2	0.28	<0.5	5	12	8	1.94	10	0.14	30	0.39	395	<1	<0.01	7	1090	26	<10	20	0.03	<10	<10	26	<10	70	--
C 94609	3	1.74	2.0	40	50	<0.5	2	0.22	0.5	11	34	39	5.03	10	0.25	50	0.39	3620	1	<0.01	23	1100	508	<10	60	<0.01	<10	<10	22	<10	868	--

*Hart Bichler*

Certified by .....



# Chemex Labs Ltd.

-Analytical Chemists    -Geochemists    -Registered Assayers

212 Brooksbank Ave.  
North Vancouver, B.C.  
Canada                    V7J 2C1

Phone: (604) 984-0221  
Telex:                    043-52597

Semi quantitative multi element ICP analysis

## CERTIFICATE OF ANALYSIS

TO : UNITED KENO HILL MINES LIMITED

409 BLACK ST.  
WHITEHORSE, YUKON  
Y1A 2N2

CERT. # : A8617167-001-A  
INVOICE # : I8617167  
DATE : 8-SEP-86  
P.O. # : NONE  
MARKER LAKE

Nitric-Aqua-Regia digestion of 0.5 gm of material followed by ICP analysis. Since this digestion is incomplete for many minerals, values reported for Al, Sb, Ba, Be, Ca, Cr, Ga, La, Mg, K, Na, Sr, Tl, Ti, W and V can only be considered as semi-quantitative.

COMMENTS :

Sample description	Au	NAA	Al	Ag	As	Ba	Be	Bi	Ca	Cd	Co	Cr	Cu	Fe	Ga	K	La	Mg	Mn	Mo	Na	Ni	P	Pb	Sb	Sr	Ti	Tl	U	V	W	Zn
	ppb	%	ppm	ppm	ppm	ppm	ppm	ppm	%	ppm	ppm	ppm	ppm	%	ppm	%	ppm	%	ppm	%	ppm	ppm	ppm	ppm	ppm	%	ppm	ppm	ppm	ppm	ppm	
C 94153	27	0.54	2.2	580	130	<0.5	<2	0.24	<0.5	4	6	43	5.55	<10	0.21	60	0.04	57	18	<0.01	5	1870	354	<10	232	<0.01	10	10	1	<10	258	--
C 94154	20	0.83	2.2	420	280	0.5	<2	0.31	<0.5	8	7	45	5.81	10	0.20	70	0.06	174	16	<0.01	8	1880	466	<10	588	<0.01	20	20	2	<10	292	--
C 94155	<1	1.19	0.4	100	140	0.5	<2	0.36	<0.5	9	7	8	2.53	10	0.27	60	0.25	669	<1	<0.01	5	1280	40	<10	31	<0.01	<10	<10	10	<10	74	--
C 94156	1	0.64	0.4	260	60	1.0	<2	0.38	<0.5	2	3	6	1.04	<10	0.19	10	0.06	144	1	<0.01	1	1150	18	<10	111	<0.01	<10	10	1	<10	22	--
C 94157	<1	1.46	0.2	10	1440	2.5	<2	0.42	<0.5	3	4	5	1.67	10	0.24	30	0.25	901	1	0.01	2	590	48	<10	191	<0.01	<10	<10	4	<10	108	--
C 94158	1	1.51	0.4	60	70	5.0	<2	0.57	<0.5	6	7	4	2.24	10	0.47	50	0.07	1875	3	<0.01	4	1020	70	<10	26	<0.01	10	40	10	<10	134	--
C 94159	<1	2.07	0.4	30	110	1.0	<2	0.54	<0.5	6	7	8	2.71	10	0.17	40	0.25	524	<1	<0.01	4	1210	30	<10	56	<0.01	<10	<10	18	<10	78	--
C 94237	7	0.81	6.2	470	70	<0.5	<2	0.01	<0.5	<1	17	12	7.67	<10	0.92	10	0.03	9	<1	<0.01	3	360	238	<10	9	<0.01	<10	<10	10	<10	24	--
C 94501	<1	1.76	0.4	10	160	<0.5	<2	0.47	<0.5	5	155	8	2.26	10	0.48	50	0.45	422	<1	0.05	6	1140	20	<10	144	0.03	<10	<10	31	<10	90	--
C 94502	<1	2.72	0.2	20	150	1.5	<2	0.65	<0.5	7	10	12	2.94	10	0.25	50	0.45	583	1	0.01	6	1420	24	<10	137	0.01	<10	<10	34	<10	90	--
C 94503	<1	3.33	0.8	20	170	1.0	<2	0.29	<0.5	6	14	12	2.85	10	0.27	40	0.55	297	<1	<0.01	10	1160	20	<10	98	0.01	<10	<10	32	<10	106	--
C 94504	<1	2.85	0.4	10	150	1.0	<2	0.63	<0.5	7	15	15	2.67	10	0.32	30	0.54	560	<1	0.04	11	900	20	<10	205	0.04	<10	<10	37	<10	80	--
C 94505	13	2.55	0.4	10	170	0.5	<2	0.58	<0.5	6	13	11	2.61	10	0.26	30	0.52	423	<1	0.02	11	870	18	<10	144	0.02	<10	<10	32	<10	80	--
C 94506	1	2.52	0.4	10	150	<0.5	<2	0.54	<0.5	7	13	11	2.70	10	0.22	40	0.51	524	<1	0.02	10	1210	30	<10	119	0.02	<10	<10	36	<10	88	--
C 94507	<1	3.14	0.4	10	90	1.0	<2	1.13	<0.5	7	11	10	2.72	10	0.32	30	0.63	421	<1	0.02	7	990	20	<10	186	0.03	<10	<10	30	<10	94	--
C 94508	<1	1.84	0.6	20	80	<0.5	<2	0.57	<0.5	10	21	14	2.88	10	0.25	40	0.67	861	1	<0.01	23	1100	26	<10	91	0.01	<10	<10	28	<10	108	--
C 94509	<1	2.04	0.2	10	110	<0.5	<2	0.36	<0.5	10	21	23	3.45	10	0.23	50	0.76	762	<1	0.01	19	1200	22	<10	111	0.03	<10	<10	48	<10	104	--
C 94510	<1	2.13	0.4	20	70	0.5	<2	0.60	<0.5	15	30	29	3.84	10	0.29	50	0.85	1032	2	0.01	30	1190	28	<10	108	0.02	<10	<10	39	<10	126	--
C 94511	<1	1.82	0.6	20	50	<0.5	<2	0.60	<0.5	12	20	38	3.42	10	0.25	40	0.65	634	2	0.01	17	1200	30	<10	77	0.01	<10	<10	35	<10	108	--
C 94512	3	1.79	0.4	10	90	<0.5	<2	0.20	<0.5	7	18	18	2.54	<10	0.18	30	0.46	371	1	0.01	13	1060	20	<10	56	0.02	<10	<10	33	<10	74	--
C 94513	<1	1.95	0.4	10	110	<0.5	<2	0.24	<0.5	6	14	10	2.86	<10	0.17	30	0.43	267	<1	0.01	10	920	22	<10	70	0.03	<10	<10	36	<10	72	--
C 94514	<1	2.17	0.6	10	130	0.5	<2	0.74	<0.5	7	10	12	2.69	10	0.22	40	0.55	738	<1	0.01	6	1060	28	<10	139	0.01	<10	<10	29	<10	94	--
C 94515	<1	2.10	0.4	10	100	<0.5	<2	0.41	<0.5	6	13	10	2.89	10	0.21	30	0.54	266	<1	<0.01	10	1500	20	<10	83	0.03	<10	<10	35	<10	84	--
C 94516	<1	1.33	1.6	20	90	<0.5	<2	0.22	<0.5	4	12	9	2.39	<10	0.28	30	0.23	718	2	<0.01	7	1040	172	<10	29	<0.01	<10	<10	19	<10	232	--
C 94517	2	1.28	0.8	10	90	<0.5	<2	0.30	<0.5	8	28	12	2.45	<10	0.12	30	0.40	515	<1	<0.01	19	750	72	<10	37	0.07	<10	<10	38	<10	158	--
C 94518	10	1.54	8.4	30	70	1.0	<2	0.47	<0.5	9	9	21	2.72	10	0.17	40	0.33	1495	1	<0.01	6	1120	290	<10	46	<0.01	<10	<10	15	<10	584	--
C 94519	<1	1.48	2.4	10	110	0.5	<2	0.38	<0.5	6	9	17	2.48	10	0.22	50	0.40	902	<1	0.01	5	1120	84	<10	49	0.01	<10	<10	24	<10	216	--
C 94520	<1	1.00	1.2	20	70	0.5	<2	0.45	0.5	5	6	14	2.03	10	0.29	50	0.22	1145	<1	<0.01	3	1180	162	<10	66	<0.01	<10	<10	11	<10	306	--
C 94521	8	1.37	48.0	40	50	0.5	<2	0.42	3.0	7	8	28	2.98	10	0.26	40	0.28	3226	2	<0.01	6	1080	1034	<10	45	<0.01	<10	10	12	<10	2088	--
C 94522	<1	1.33	9.0	20	40	1.0	<2	0.44	3.5	9	5	25	2.96	10	0.23	50	0.36	4944	2	<0.01	6	930	832	<10	33	<0.01	<10	10	8	<10	2088	--
C 94523	<1	1.37	2.2	20	60	<0.5	<2	0.36	1.0	8	7	15	3.03	10	0.20	60	0.42	2464	2	<0.01	5	1000	330	<10	47	<0.01	10	<10	11	<10	566	--
C 94524	<1	1.69	1.0	10	80	1.0	<2	0.34	<0.5	6	9	14	2.76	10	0.19	40	0.42	989	2	<0.01	7	1150	108	<10	61	0.01	<10	<10	19	<10	194	--
C 94525	<1	1.94	0.6	40	120	0.5	<2	0.67	<0.5	7	12	14	2.73	10	0.22	40	0.45	688	1	0.01	8	1220	98	<10	88	0.01	<10	10	25	<10	286	--
C 94526	1	1.92	0.4	30	100	<0.5	<2	0.38	<0.5	13	36	27	3.68	10	0.27	40	0.56	546	<1	<0.01	30	920	44	<10	40	0.04	<10	<10	34	<10	122	--
C 94527	3	1.13	0.2	10	60	0.5	<2	0.11	<0.5	4	15	10	2.04	<10	0.12	20	0.28	366	<1	<0.01	10	1020	18	<10	11	0.04	<10	<10	31	<10	68	--
C 94528	2	2.05	0.2	10	60	<0.5	2	0.12	<0.5	9	39	21	3.57	<10	0.18	20	0.43	263	<1	0.01	21	630	24	<10	22	0.14	<10	<10	55	<10	78	--
C 94529	<1	1.66	0.6	10	50	<0.5	2	0.08	<0.5	8	32	21	3.76	<10	0.13	20	0.42	427	1	<0.01	21	500	36	<10	14	0.04	<10	<10	34	<10	100	--
C 94530	<1	2.18	0.6	20	110	<0.5	4	0.68	<0.5	15	27	27	3.14	10	0.19	50	0.57	630	<1	<0.01	26	870	52	<10	60	0.01	<10	<10	33	<10	126	--
C 94531	<1	0.84	0.4	10	60	<0.5	<2	0.04	<0.5	2	8	10	1.29	<10	0.06	10	0.06	71	<1	0.01	4	660	94	<10	14	0.01	<10	<10	20	<10	38	--
C 94532	<1	0.71	1.0	30	180	<0.5	<2	0.27	4.0	21	13	19	2.15	<10	0.19	10	0.14	4709	1	<0.01	9	1620	90	<10	31	0.01	<10	<10	25	<10	252	--

Certified by *[Signature]*



# Chemex Labs Ltd.

*\*Analytical Chemists    \*Geochemists    \*Registered Assayers*

212 Brooksbank Ave.  
North Vancouver, B.C.  
Canada V7J 2C1

Phone: (604) 984-0221  
Telex: 043-52597

Semi quantitative multi element ICP analysis

## CERTIFICATE OF ANALYSIS

TO : UNITED KENO HILL MINES LIMITED

409 BLACK ST.  
WHITEHORSE, YUKON  
Y1A 2N2

CERT. # : A8616237-002-A  
INVOICE # : I8616237  
DATE : 24-AUG-86  
P.O. # : NONE  
KR SOIL

Nitric-Aqua-Regia digestion of 0.5 gm of material followed by ICP analysis. Since this digestion is incomplete for many minerals, values reported for Al, Sb, Ba, Be, Ca, Cr, Ga, La, Mg, K, Na, Sr, Tl, Ti, W and V can only be considered as semi-quantitative.

COMMENTS :

Sample description	Au NAA ppb	Al %	Ag ppm	As ppm	Ba ppm	Be ppm	Bi ppm	Ca %	Cd ppm	Co ppm	Cr ppm	Cu ppm	Fe %	Ga ppm	K %	La ppm	Hg %	Mn ppm	Mo ppm	Na %	Ni ppm	P ppm	Pb ppm	Sb ppm	Sr ppm	Ti %	Tl ppm	U ppm	V ppm	W ppm	Zn ppm	
94061	<1	4.15	0.2	<10	60	0.5	<2	2.83	<0.5	9	176	9	2.25	20	0.27	20	0.61	448	<1	0.42	19	420	18	<10	599	0.14	<10	<10	29	<10	52	--
94062	<1	3.56	0.2	10	180	<0.5	<2	0.84	<0.5	18	71	30	5.73	10	0.54	20	1.16	735	1	0.03	39	840	14	<10	87	0.25	<10	<10	63	<10	124	--
94062	<1	2.49	0.2	20	120	<0.5	<2	0.27	<0.5	12	49	15	3.37	10	0.38	40	0.31	322	<1	0.01	29	560	16	<10	30	0.19	<10	<10	48	<10	30	--
94064	<1	1.48	0.2	<10	80	<0.5	<2	0.54	<0.5	9	32	15	3.17	10	0.29	70	0.51	259	<1	0.01	26	1180	8	<10	41	0.11	<10	<10	25	<10	64	--
94065	<1	2.88	0.2	<10	110	<0.5	<2	0.28	<0.5	11	60	40	3.82	10	0.33	60	0.89	287	<1	0.01	39	640	14	<10	35	0.24	<10	<10	48	<10	110	--
94066	<1	2.03	0.2	10	100	<0.5	<2	0.19	<0.5	9	41	16	4.06	10	0.45	50	0.66	292	<1	0.01	23	480	18	<10	25	0.19	<10	<10	48	<10	80	--
94067	<1	2.22	0.2	<10	100	<0.5	<2	0.76	<0.5	12	43	17	3.73	10	0.32	40	0.77	384	<1	0.02	46	600	20	<10	59	0.14	<10	<10	39	<10	114	--
94068	<1	3.49	0.2	20	130	2.0	<2	1.19	<0.5	34	49	55	5.82	20	0.25	60	0.74	1138	1	0.04	86	1500	32	<10	153	0.11	<10	30	36	<10	198	--
94069	3	2.49	0.2	10	70	<0.5	<2	0.16	<0.5	10	37	60	3.71	<10	0.29	30	0.43	220	1	0.31	37	1770	18	<10	24	0.96	<10	<10	39	<10	70	--
94070	<1	1.65	0.6	<10	60	<0.5	<2	0.08	<0.5	10	27	48	2.94	<10	0.35	50	0.44	208	<1	0.03	30	720	16	<10	10	0.09	<10	<10	27	<10	64	--
94071	1	3.13	0.4	<10	210	<0.5	<2	0.02	<0.5	9	54	43	6.54	10	1.20	60	1.08	391	2	0.02	12	720	22	<10	12	0.22	<10	<10	47	<10	110	--
94072	<1	2.78	0.2	10	180	<0.5	<2	0.04	<0.5	11	54	38	5.73	10	0.83	50	0.94	377	1	0.02	28	600	18	<10	14	0.19	<10	<10	46	<10	120	--
94073	<1	0.98	0.2	<10	40	<0.5	<2	0.27	<0.5	3	10	6	1.36	<10	0.17	20	0.20	341	1	0.01	6	1400	10	<10	22	0.02	<10	<10	21	<10	48	--
94074	<1	1.91	0.2	<10	30	<0.5	<2	0.08	<0.5	3	10	6	2.13	<10	0.24	30	0.27	236	<1	<0.01	5	550	14	<10	5	0.04	<10	<10	19	<10	60	--
94075	<1	2.15	0.2	<10	30	<0.5	<2	1.87	<0.5	7	30	12	2.07	10	0.13	20	0.38	332	<1	0.08	17	1140	10	<10	253	0.07	<10	<10	26	<10	60	--
94076	<1	1.36	0.2	10	80	<0.5	<2	0.34	<0.5	9	153	13	2.00	10	0.29	30	0.71	375	<1	0.03	26	520	10	<10	27	0.14	<10	<10	38	<10	108	--
94077	<1	0.75	0.2	20	10	1.0	2	0.29	1.0	2	4	17	1.53	<10	0.16	10	0.12	398	1	<0.01	5	470	78	<10	167	<0.01	<10	10	1	<10	274	--
94102	<1	1.36	0.2	10	70	0.5	<2	4.01	<0.5	6	41	85	1.94	10	0.25	<10	0.43	332	<1	0.03	87	1120	18	<10	246	0.07	<10	20	20	<10	154	--

*Hart Bisher*

Certified by .....



# Chemex Labs Ltd.

-Analytical Chemists -Geochemists -Registered Assayers

212 Brooksbank Ave.  
North Vancouver, B.C.  
Canada V7J2C1

Phone: (604) 984-0221  
Telex: 043-52597

## CERTIFICATE OF ANALYSIS

TO : UNITED KENO HILL MINES LIMITED

409 BLACK ST.  
WHITEHORSE, YUKON  
Y1A 2N2

CERT. # : A9616237-001-A  
INVOICE # : I8616237  
DATE : 24-AUG-86  
P.O. # : NONE  
KR SOIL

Semi quantitative multi element ICP analysis

Nitric-Aqua-Regia digestion of 0.5 gm of material followed by ICP analysis. Since this digestion is incomplete for many minerals, values reported for Al, Sb, Ba, Be, Ca, Cr, Ga, La, Mg, K, Na, Sr, Tl, Ti, W and V can only be considered as semi-quantitative.

COMMENTS :

Sample description	Au NAA	Al	Ag	As	Ba	Be	Bi	Ca	Cd	Co	Cr	Cu	Fe	Ga	K	La	Mg	Mn	Mo	Na	Ni	P	Pb	Sb	Sr	Ti	Tl	U	V	W	Zn	
	ppb	%	ppm	ppm	ppm	ppm	ppm	%	ppm	ppm	ppm	ppm	%	ppm	%	ppm	%	ppm	ppm	%	ppm	ppm	ppm	ppm	%	ppm	ppm	ppm	ppm	ppm		
94001	<1	2.54	0.2	10	90	<0.5	<2	1.10	<0.5	20	44	31	3.68	10	0.42	30	1.29	532	<1	0.03	42	1190	26	<10	82	0.14	<10	<10	41	<10	160	--
94002	3	3.18	0.2	10	160	<0.5	<2	0.96	<0.5	23	77	49	4.92	10	0.62	40	1.22	657	<1	0.03	54	720	12	<10	434	0.25	<10	<10	63	<10	124	--
94003	1	1.79	1.2	10	30	0.5	3	4.49	<0.5	11	45	35	2.97	10	0.19	<10	0.54	966	<1	0.02	24	1190	66	<10	219	0.07	<10	<10	30	<10	102	--
94004	<1	2.29	0.2	10	100	<0.5	<2	1.76	<0.5	16	49	31	3.45	10	0.20	50	0.85	468	<1	0.09	44	1420	14	<10	327	0.11	<10	<10	36	<10	86	--
94005	1	1.24	0.4	130	50	<0.5	<2	0.29	<0.5	6	20	11	2.55	<10	0.10	20	0.33	516	<1	<0.01	13	1250	23	<10	13	0.04	<10	<10	28	<10	148	--
94006	<1	1.82	0.2	10	100	0.5	<2	0.16	<0.5	5	21	9	2.18	<10	0.12	20	0.38	272	1	<0.01	14	920	18	<10	11	0.04	<10	<10	24	<10	82	--
94007	<1	1.89	0.2	10	60	0.5	<2	0.16	<0.5	7	28	16	2.74	<10	0.25	30	0.52	394	1	<0.01	20	750	44	<10	13	0.07	<10	<10	27	<10	122	--
94008	<1	2.18	0.2	10	160	0.5	<2	0.37	<0.5	18	39	21	4.80	10	0.53	50	0.55	925	2	0.01	42	1770	30	<10	7	0.05	<10	<10	26	<10	138	--
94009	1	1.36	0.2	10	110	<0.5	<2	0.12	<0.5	8	38	24	3.55	<10	0.19	40	0.47	342	2	<0.01	27	1360	18	<10	13	0.05	<10	<10	29	<10	94	--
94010	<1	2.32	0.2	10	160	<0.5	<2	0.65	<0.5	11	42	24	3.32	10	0.38	50	0.72	457	<1	0.01	31	680	14	<10	46	0.15	<10	<10	45	<10	86	--
94011	<1	2.51	0.2	20	120	<0.5	<2	0.28	<0.5	12	50	26	2.32	10	0.51	40	1.01	510	1	0.21	22	740	12	<10	15	0.17	<10	<10	59	<10	92	--
94012	<1	1.75	0.2	10	100	<0.5	<2	0.15	<0.5	8	38	16	2.97	10	0.35	30	0.62	371	1	0.01	24	460	9	<10	14	0.12	<10	<10	44	<10	78	--
94013	<1	1.45	0.4	10	120	<0.5	<2	0.12	<0.5	5	27	13	2.68	<10	0.32	10	0.44	234	1	<0.01	13	2310	8	<10	15	0.04	<10	<10	35	<10	58	--
94014	<1	2.21	0.8	30	90	<0.5	<2	0.13	<0.5	10	46	23	3.00	10	0.55	50	0.76	391	1	0.01	28	530	19	<10	12	0.15	<10	<10	45	<10	116	--
94015	<1	1.36	0.4	10	50	0.5	<2	0.55	<0.5	10	33	41	2.10	10	0.95	10	0.26	499	<1	0.02	24	1540	14	<10	216	0.03	<10	<10	22	<10	114	--
94016	<1	2.80	0.2	10	160	<0.5	<2	0.74	<0.5	15	59	19	3.76	10	0.50	30	0.39	1096	1	0.01	24	1180	19	<10	91	0.12	<10	<10	56	<10	112	--
94017	<1	2.42	0.4	10	100	<0.5	<2	0.22	<0.5	11	39	19	3.48	10	0.25	30	0.81	538	1	<0.01	25	990	24	<10	21	0.15	<10	<10	60	<10	144	--
94018	<1	2.57	0.2	20	120	<0.5	<2	0.21	<0.5	20	42	27	4.62	10	0.54	30	1.15	1034	<1	<0.01	25	1050	8	<10	9	0.18	<10	<10	101	<10	126	--
94019	<1	2.17	0.4	30	120	<0.5	<2	0.07	<0.5	12	34	17	4.02	10	0.38	20	0.53	1059	1	<0.01	16	890	24	<10	25	0.12	<10	<10	69	<10	110	--
94020	<1	2.94	0.2	10	130	<0.5	<2	0.47	<0.5	18	57	19	4.38	10	0.29	20	1.12	811	<1	0.01	33	630	24	<10	65	0.14	<10	<10	54	<10	128	--
94021	1	2.35	0.4	<10	100	<0.5	<2	0.08	<0.5	9	37	14	3.41	<10	0.53	10	0.58	638	<1	<0.01	18	950	20	<10	13	0.10	<10	<10	43	<10	108	--
94022	<1	0.97	0.4	<10	100	<0.5	<2	0.07	<0.5	5	16	11	1.83	<10	0.22	10	0.19	639	<1	<0.01	8	1060	16	<10	12	0.03	<10	<10	32	<10	66	--
94023	<1	1.22	0.2	10	20	1.0	<2	0.16	<0.5	6	12	10	2.07	<10	0.14	20	0.22	413	1	<0.01	12	760	50	<10	13	0.21	<10	<10	10	<10	134	--
94024	2	2.19	0.6	10	110	0.5	<2	0.13	0.5	11	30	25	3.24	<10	0.20	20	0.35	1013	1	<0.01	23	2450	34	<10	27	0.03	<10	<10	43	<10	142	--
94025	<1	1.69	0.2	10	70	<0.5	<2	0.15	<0.5	11	34	17	2.88	<10	0.33	20	0.53	527	<1	<0.01	23	720	16	<10	17	0.11	<10	<10	37	<10	120	--
94029	<1	2.22	0.4	<10	90	<0.5	<2	0.14	<0.5	17	35	33	4.52	<10	0.82	30	0.69	476	1	0.01	26	870	26	<10	36	0.09	<10	<10	30	<10	150	--
94030	<1	1.75	0.2	20	90	1.0	<2	0.32	<0.5	12	57	20	2.73	10	0.34	40	0.66	695	1	0.01	29	780	23	<10	29	0.11	<10	<10	32	<10	168	--
94031	<1	1.71	0.2	<10	90	<0.5	<2	0.06	<0.5	5	24	16	2.73	<10	0.24	30	0.33	344	2	0.01	14	1000	20	<10	20	0.09	<10	<10	36	<10	68	--
94032	<1	2.42	0.2	<10	120	<0.5	<2	0.04	<0.5	10	27	39	4.50	10	0.50	50	0.72	292	1	0.02	21	620	20	<10	23	0.16	<10	<10	39	<10	98	--
94033	<1	2.79	0.6	10	210	<0.5	<2	0.09	<0.5	12	46	45	5.86	10	1.10	30	0.93	521	<1	0.03	21	580	18	<10	43	0.21	<10	<10	42	<10	112	--
94051	<1	2.71	0.2	10	90	1.0	<2	1.22	<0.5	27	45	37	4.05	10	0.42	30	1.33	618	<1	0.02	57	1420	32	<10	84	0.14	<10	<10	45	<10	198	--
94052	<1	4.42	0.2	<10	90	1.0	<2	3.30	<0.5	15	174	24	3.04	20	0.46	20	0.64	1741	<1	0.40	39	540	14	<10	644	0.17	<10	<10	29	<10	66	--
94053	<1	5.28	0.4	<10	120	<0.5	<2	3.91	<0.5	51	98	113	7.12	30	1.01	30	1.30	647	<1	0.53	110	1020	16	<10	533	0.27	<10	<10	58	<10	116	--
94054	<1	5.71	0.4	<10	70	<0.5	<2	5.17	<0.5	24	129	45	4.47	30	0.62	<10	1.12	447	<1	0.56	50	680	14	<10	665	0.24	<10	<10	50	<10	102	--
94055	<1	5.93	0.2	<10	90	<0.5	<2	4.36	<0.5	56	84	142	7.03	20	0.76	10	1.08	436	<1	0.58	120	950	14	<10	559	0.22	<10	<10	48	<10	98	--
94056	<1	5.16	0.2	10	50	<0.5	<2	4.47	<0.5	28	75	62	4.87	20	0.35	30	1.01	432	<1	0.35	62	960	14	<10	438	0.18	<10	<10	46	<10	112	--
94057	<1	4.25	0.2	<10	60	<0.5	<2	4.88	<0.5	24	76	44	4.84	30	0.39	10	1.02	432	<1	0.31	53	1100	20	<10	639	0.18	<10	<10	46	<10	106	--
94058	<1	5.01	0.2	<10	70	<0.5	<2	6.23	<0.5	28	81	39	5.29	30	0.50	<10	1.07	505	<1	0.45	62	910	14	<10	821	0.21	<10	<10	46	<10	112	--
94059	1	4.34	0.2	<10	70	<0.5	<2	4.72	<0.5	18	141	25	4.13	30	0.40	<10	0.98	568	<1	0.31	38	530	14	<10	623	0.20	<10	<10	44	<10	90	--
94060	<1	3.19	0.2	10	70	<0.5	<2	1.95	<0.5	16	58	34	3.25	20	0.25	40	0.78	402	<1	0.09	36	710	18	<10	261	0.16	<10	<10	40	<10	86	--

Certified by *Stank Bichler*

APPENDIX III  
SUPPORT

Geochemical Analysis By:

Chemex Labs Limited  
212 Brooksbank Ave.  
North Vancouver, B.C.  
V7J 2C1

Bondar-Clegg & Company Limited  
136 Industrial Road  
Whitehorse, Yukon  
Y1A 2V1

Helicopter Support By:

Frontier Helicopters Limited  
Box 10  
Watson Lake, Yukon

Drafting By:

Holly Plaskett  
409 Black St.  
Whitehorse, Yukon  
Y1A 2N2

Expediting By:

Robert Stirling  
409 Black St.  
Whitehorse, Yukon  
Y1A 2N2

APPENDIX IV  
COST BREAKDOWN

	MR	KR
GENERAL	\$19,302.05	\$18,384.16
GEOLOGICAL	\$86.13	\$148.77
GEOCHEMICAL	\$52.33	\$144.52
ASSAYING	\$1,232.00	\$3,203.20
CAMP OPERATIONS	\$2,459.80	\$2,459.79
AIRCRAFT CHARTER	\$7,872.83	\$7,872.83
VEHICLES	\$235.00	\$235.00
TOTALS	\$31,240.14	\$32,448.27

Aircraft \$475++/hr

Assaying \$17.45+/hr includes average of rock and soil plus transport. Modem charges are in General.

Camp Operations \$31.00/man/day includes food and lodging.

Geological & Geochemical includes materials such as sample bags, flagging etc.

General includes salaries and overhead, drafting, expediting, communications.

091715

CERTIFICATE OF QUALIFICATIONS

I, Dennis J. Ouellette with business address:

United Keno Hill Mines Limited  
409 Black Street  
Whitehorse, Yukon  
Y1A 2N2

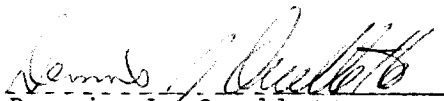
and residential address:

#5-100 Lewes Blvd.  
Whitehorse, Yukon  
Y1A 3W1

do hereby certify that:

1. I am a practicing geologist.
2. I hold a Bachelor of Science (Specialist) Degree (1984) in Geology from Brandon University, Brandon, Manitoba
3. I am an Associate of the Geological Association of Canada.
4. I have practiced my profession as a graduate geologist since May of 1984 and have been working in the field of mineral exploration since June of 1977.
5. This report entitled "Report on the Marker Lake Groups, MR & KR, Rancheria area, Watson Lake Mining District" is based on my work on the properties as an employee of United Keno Hill Mines Limited.
6. I have not received nor do I expect to receive any interest, either directly or indirectly, in the properties concerned in this report or in United Keno Hill Mines Limited.

Respectfully submitted,

  
Dennis J. Ouellette,  
B.Sc. (Spec.)

031715

CERTIFICATE OF QUALIFICATIONS

I, Dennis R. Prince with business address of:

United Keno Hill Mines Limited  
409 Black Street  
Whitehorse, Yukon  
Y1A 2N2

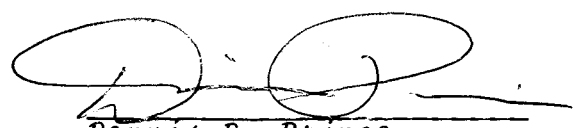
and residential address:

13 Koidern Avenue  
Whitehorse, Yukon  
Y1A 3N7  
Tel: 403-667-4720

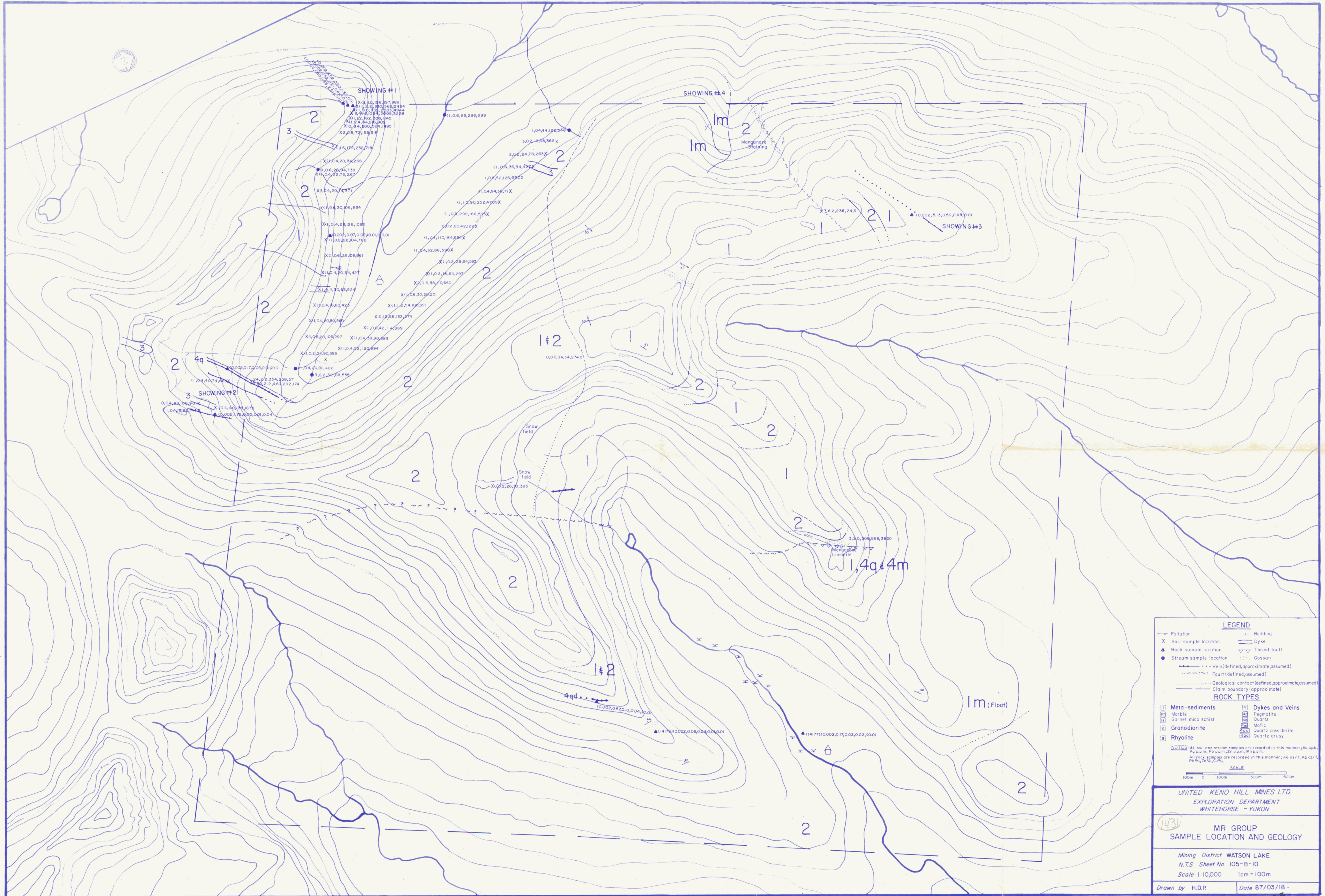
do hereby certify that:

1. I am a practicing geologist.
2. I hold a Bachelor of Science (Honours) Degree (1970) in Geology from Memorial University of Newfoundland.
3. I am a Fellow of the Geological Association of Canada.
4. I am a member of the Professional Geoscientists Society of Yukon.
5. I have been practicing my profession for 16 years. I was employed by Falconbridge Limited as an Exploration Geologist from 1970 to 1981 and am now employed by United Keno Hill Mines Limited in the capacity of Exploration Manager.
6. This report entitled "Report on the Marker Lake Groups, MR & KR, Rancheria area, Watson Lake Mining District" and dated "October, 1986" is based on work supervised by me as an employee of United Keno Hill Mines Limited.
6. I have not received nor do I expect to receive any interest, either directly or indirectly, in the properties concerned in this report or in United Keno Hill Mines Limited.

Respectfully submitted,



Dennis R. Prince,  
B.Sc. (Hon.), FGAC



**LEGEND**

—	Foliation	—	Bedding
X	Soil sample location	—	Dyke
▲	Rock sample location	—	Thrust fault
●	Stream sample location	—	Gossan
—	Vein (defined, approximate, assumed)	—	Fault (defined, assumed)
—	Geological contact (defined, approximate, assumed)	—	Claim boundary (approximate)

**ROCK TYPES**

1	Meta-sediments	4	Dykes and Veins
2	Marble	4q	Pegmatite
3	Garnet mica schist	4m	Quartz
4	Granodiorite	4m	Mafic
5	Rhyolite	4m	Quartz cassiterite
		4m	Quartz drusy

**NOTES:** All soil and stream samples are recorded in this manner; Au p.p.b., Ag p.p.m., Pb p.p.m., Zn p.p.m., Mn p.p.m.  
All rock samples are recorded in this manner; Au oz./T, Ag oz./T, Pb %, Zn %, Cu %.

**SCALE**  
100m 0 100m 300m 500m

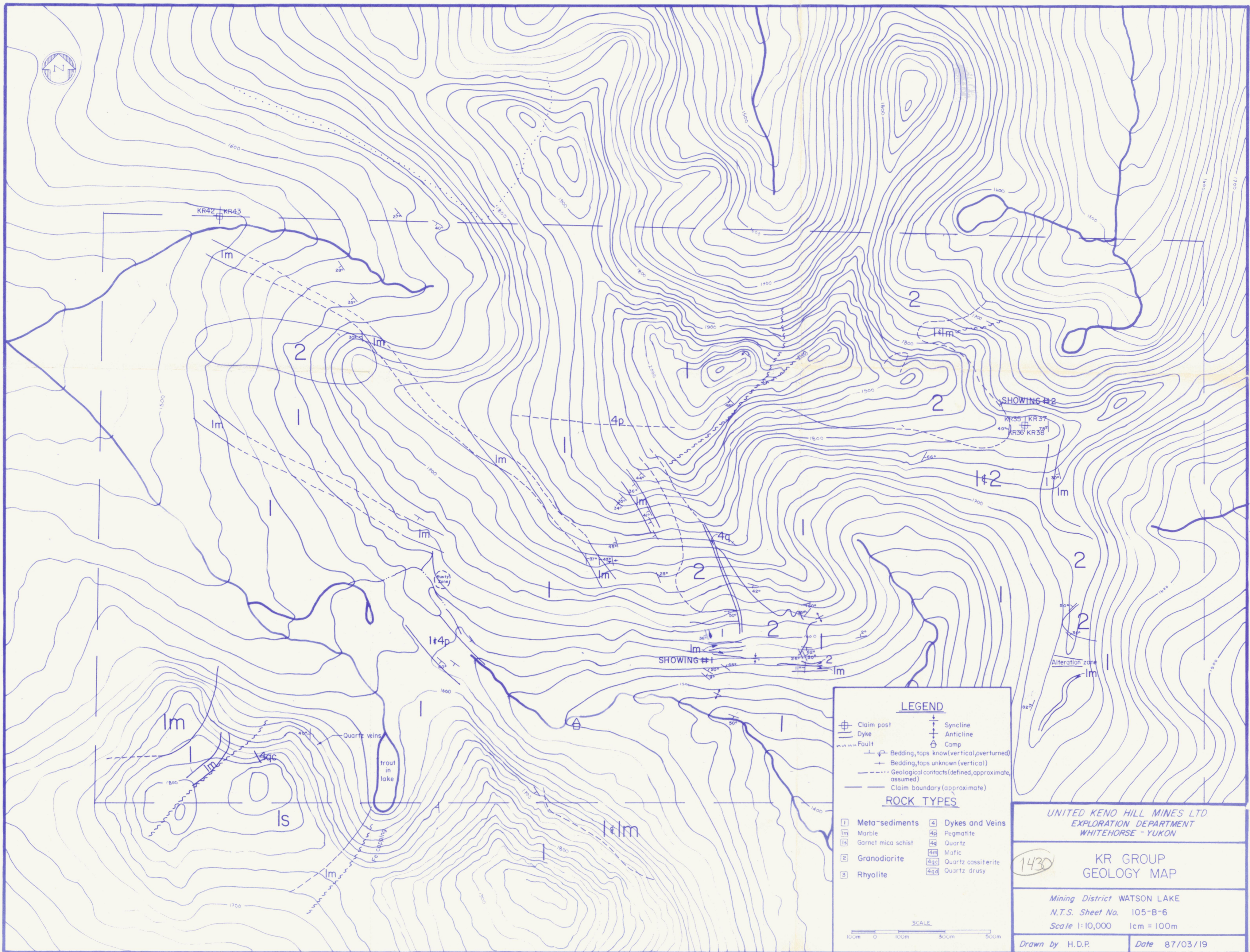
UNITED KENO HILL MINES LTD.  
EXPLORATION DEPARTMENT  
WHITEHORSE - YUKON

MR GROUP  
SAMPLE LOCATION AND GEOLOGY

Mining District WATSON LAKE  
N.T.S. Sheet No. 105-B-10  
Scale 1:10,000 1cm = 100m

Drawn by H.D.P. Date 87/03/18

091715



**LEGEND**

⊕ Claim post	⌒ Syncline
▬ Dyke	⌒ Anticline
--- Fault	⌒ Camp
⌒ Bedding, tops known (vertical, overturned)	
⌒ Bedding, tops unknown (vertical)	
--- Geological contacts (defined, approximate, assumed)	
--- Claim boundary (approximate)	

**ROCK TYPES**

1 Meta-sediments	4 Dykes and Veins
1m Marble	4p Pegmatite
1s Garnet mica schist	4q Quartz
2 Granodiorite	4m Mafic
3 Rhyolite	4qc Quartz cassiterite
	4qdr Quartz drusy

SCALE

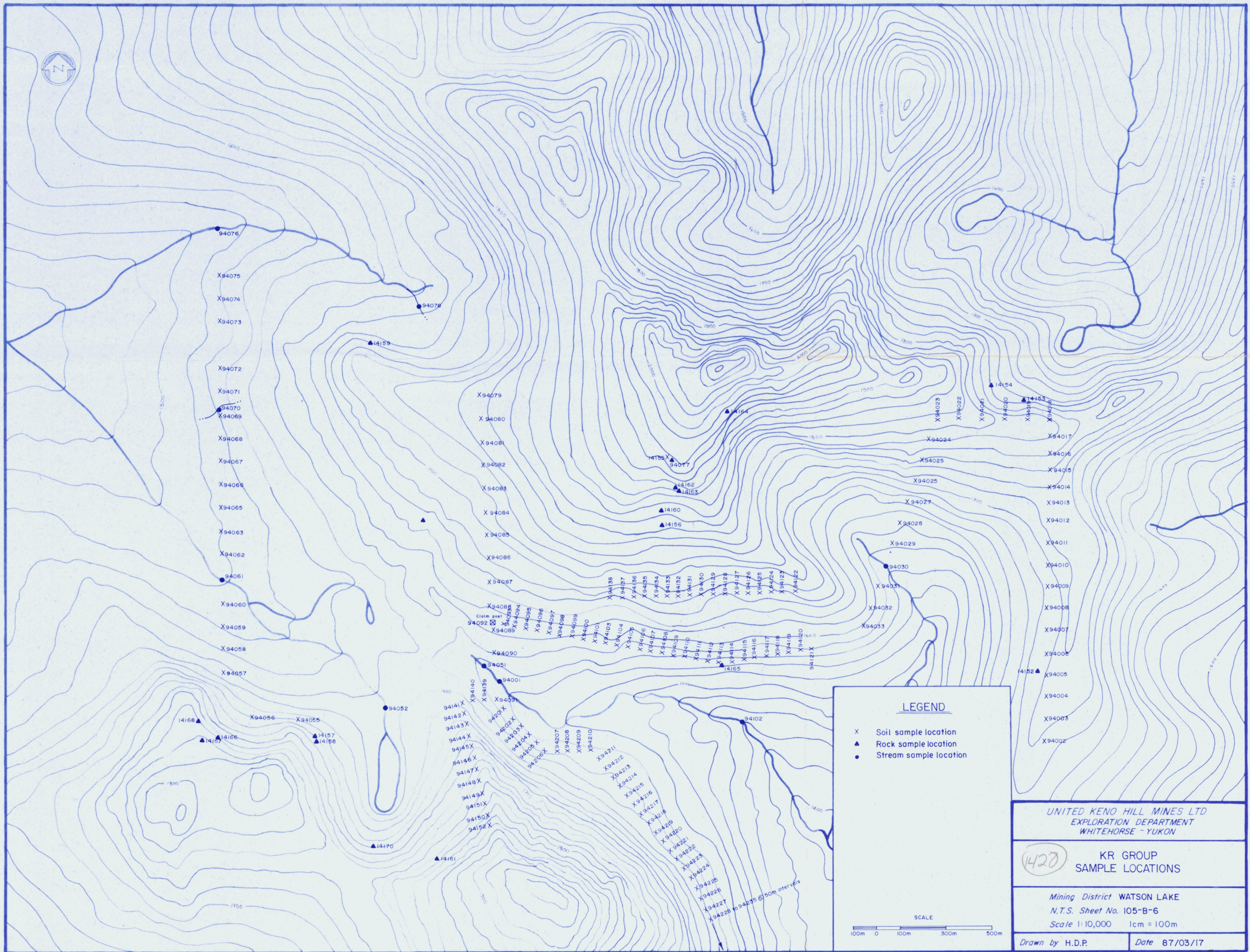
100m 0 100m 300m 500m

UNITED KENO HILL MINES LTD.  
EXPLORATION DEPARTMENT  
WHITEHORSE - YUKON

1430 KR GROUP  
GEOLOGY MAP

Mining District WATSON LAKE  
N.T.S. Sheet No. 105-B-6  
Scale 1:10,000 1cm = 100m

Drawn by H.D.P. Date 87/03/19



**LEGEND**

- X Soil sample location
- ▲ Rock sample location
- Stream sample location

SCALE

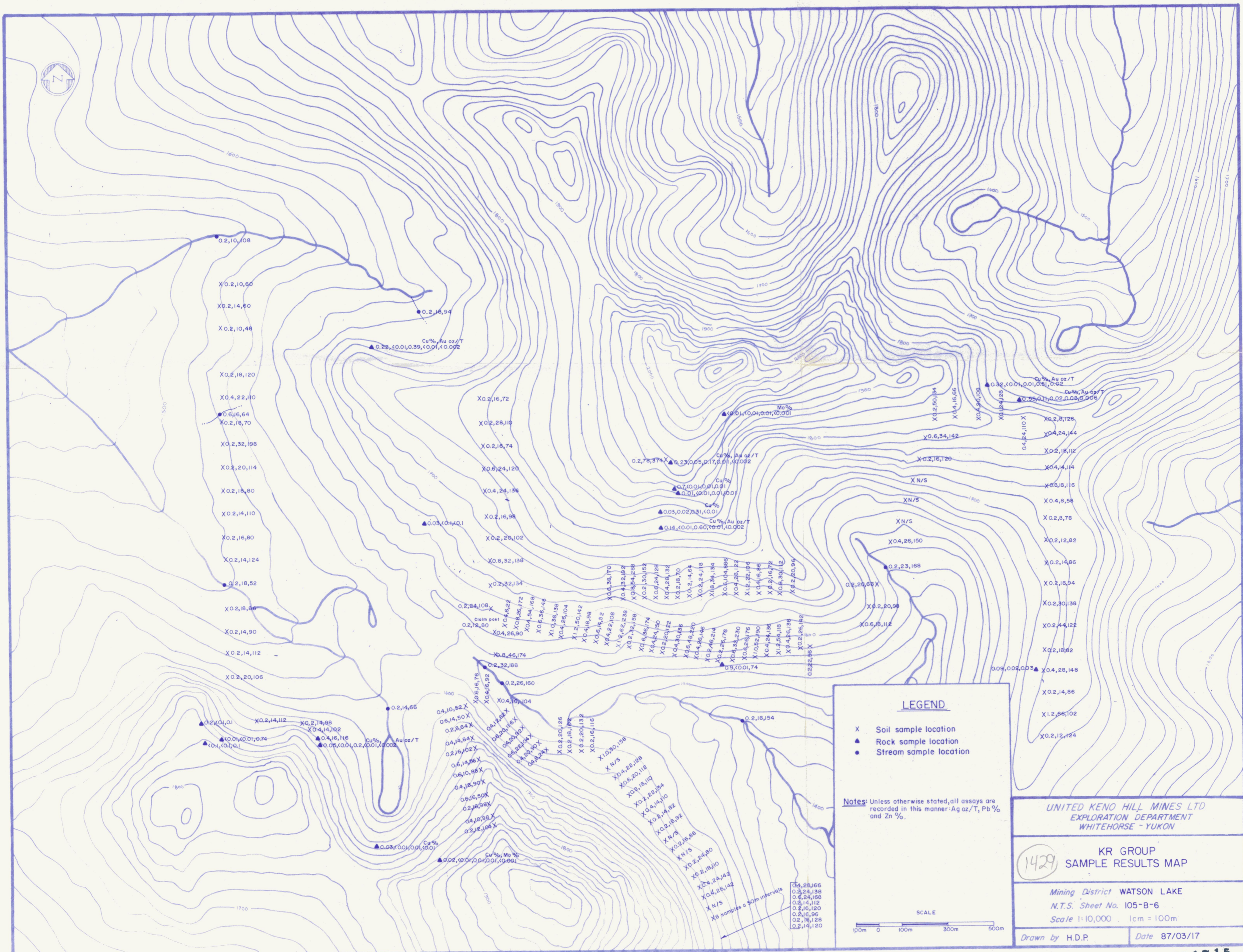
UNITED KENO HILL MINES LTD  
EXPLORATION DEPARTMENT  
WHITEHORSE - YUKON

(1420) KR GROUP  
SAMPLE LOCATIONS

Mining District WATSON LAKE  
N.T.S. Sheet No. 105-B-6  
Scale 1:10,000 1cm = 100m

Drawn by H.D.P. Date 87/03/17

091713



**LEGEND**

- X Soil sample location
- ▲ Rock sample location
- Stream sample location

**Notes:** Unless otherwise stated, all assays are recorded in this manner: Ag oz/T, Pb % and Zn %.

**SCALE**

0 100m 300m 500m

UNITED KENO HILL MINES LTD  
EXPLORATION DEPARTMENT  
WHITEHORSE - YUKON

1429 KR GROUP  
SAMPLE RESULTS MAP

Mining District WATSON LAKE  
N.T.S. Sheet No. 105-B-6  
Scale 1:10,000 1cm = 100m

Drawn by H.D.P. Date 87/03/17

091715