



Department of Indian Affairs and  
of Northern Affairs. Northern Development  
and National Resources. Resource Development  
Branch

Ministère - Ministère des Affaires indiennes  
du Nord canadien et du Nord canadien  
des Ressources nationales Direction du développement  
des ressources.

Box 1767,  
Whitehorse, Y.T.,  
December 7, 1966.

RESTRICTED


Mr. G. A. McIntyre  
Mining Recorder  
Whitehorse, Y.T.

our file / notre dossier  
your file / votre dossier

M.I. M-252

Geophysical Report on TKUMP Group of Mineral Claims for  
Transcontinental Resources Ltd. by S. J. Hunter  
November 19, 1966

On the recommendation of the Resident Geologist and the Resident Mining Inspector  
I accept this report as representation work under Section 53 (4) of the Yukon  
Quartz Mining Act to the value of Three Hundred Fifty Three Dollars and Sixty Five  
Cents (\$353.65).

  
James Smith,  
Commissioner.

NGN/RAM

cc: Chief, Resource Management Division  
Attention: Geological Evaluation Unit

Central Mining Records - Whitehorse ✓

**GEOPHYSICAL REPORT**

**TRUMP GROUP**

**WHITEHORSE MINING DISTRICT**

Blind Creek Area

Sheet 105-K-7

Latitude 62°24'

Longitude 133°09'

Submitted to:

Transcontinental Resources Ltd.  
401-1033 Davie Street  
Vancouver, B. C.

Vancouver, B. C.  
November 19, 1966

S. J. Hunter, P. Eng.  
Consulting Mining Engineer

GEOLOGICAL SURVEY  
DEC 7 1966  
Resident Geologist  
Whitehorse, Y. T.

This report has been reviewed by the Geological Evaluation Unit. Approved as to technical worth by:

*D. C. Kirkby*  
RESIDENT GEOLOGIST

Approved as to cost in the amount of \$353.65

*S. J. Hunter*  
CONSULTING MINING ENGINEER

Accepted as representation work under Section 53(4) Yukon Quartz Mining Act.

*[Signature]*  
COMMISSIONER OF YUKON

CONTENTS

	<u>Page No.</u>
INTRODUCTION	1
CLAIMS	1
DESCRIPTION OF WORK	2
GEOLOGY	2-3
DISCUSSION OF RESULTS	4
CONCLUSIONS	4
CERTIFICATION	
APPENDIX	
Claim and Geological Plan	
Flight Plan (Taken from Aerial Mosaic)	
Magnetometer Readings Over Flight Lines	
Receipts Covering Work Done	

## INTRODUCTION

This report was compiled in order to apply a part of the expenses incurred during the aerial magnetometer survey of the Trump Group as assessment work on Trump No. 7, 9, and 11.

The report was compiled by S. J. Hunter and Associates Ltd., Consulting Mining Engineers of 406-1033 Davie Street, Vancouver, B. C.

The report was made for Transcontinental Resources Ltd., 401-1033 Davie Street, Vancouver, B. C.

## CLAIMS

The claims upon which this work is to be applied are:

Trump No. 7	Grant No. 94216
Trump No. 9	Grant No. 94218
Trump No. 11	Grant No. 94220

They are located in the Blind Creek Area and are plotted upon Claim Sheet No. 105K-7.

The exact location can be seen on Map No. 1 accompanying this report.

### DESCRIPTION OF WORK

The survey was undertaken by Canadian Aero Service Ltd., Hunt Club Road, Box 468 R. R.#5, Ottawa, Ontario.

The survey was an aerial magnetometric type using a helicopter as a vehicle for the instrument. The lines were plotted on an aerial mosaic of the claim area which was then used as a flight guide. (Map No. 2)

The readings were recorded as per Map No. 3. (Sheets 1-8) and simultaneously the ground was photographed by a camera using 35 mm. strip black and white film.

### GEOLOGY

The geology (Map No. 1) of the Trump Group Area as taken from Preliminary Map 105K - Tay River Sheet, consists apparently of Unit 5b. This unit is composed of Upper Devonian and Lower Mississippian sediments. These sediments include the following rock types:

Black and grey chert

(cont)

Shale

Quartzite

Minor conglomerate and limestone

Also in the area and probably contacting the above rocks under recent alluvium covered areas are members of Map Unit 7.

Unit 7 rock types are as follows:

Banded quartzose granulite

Green and purplish banded skarn

Quartz-sericite schist

Hornfels and phyllite

Chlorite schist

Thin altered andesite

Further information upon the geology of the general area can be obtained in the following references:

Paper 64-36 -The Mineral Industry of Yukon Territory  
by L. H. Green and C. I. Godwin.

Memoir 200 -A Reconnaissance of Pelly River Between  
Macmillan River and Hoole Canyon, Yukon by  
J. R. Johnston, 1936.

Map 7 - 1960 Tay River - Geology (Preliminary Series)

### DISCUSSION OF RESULTS

The flight pattern and recorded readings were discussed with John Prendergast, Western Manager of Canadian Aero Service Ltd. His interpretation of the results suggested that a low magnitude magnetic anomaly existed within the area covered by Claims Trump 7, 9, and 11.

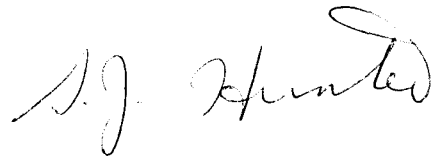
### CONCLUSION

Because of the anomaly's low strength, it was decided that further detailed interpretation at an extra cost was not warranted at that time. It was however decided that the ground should be held and that said detailed interpretation could be done in the future depending upon area developments.

CERTIFICATION

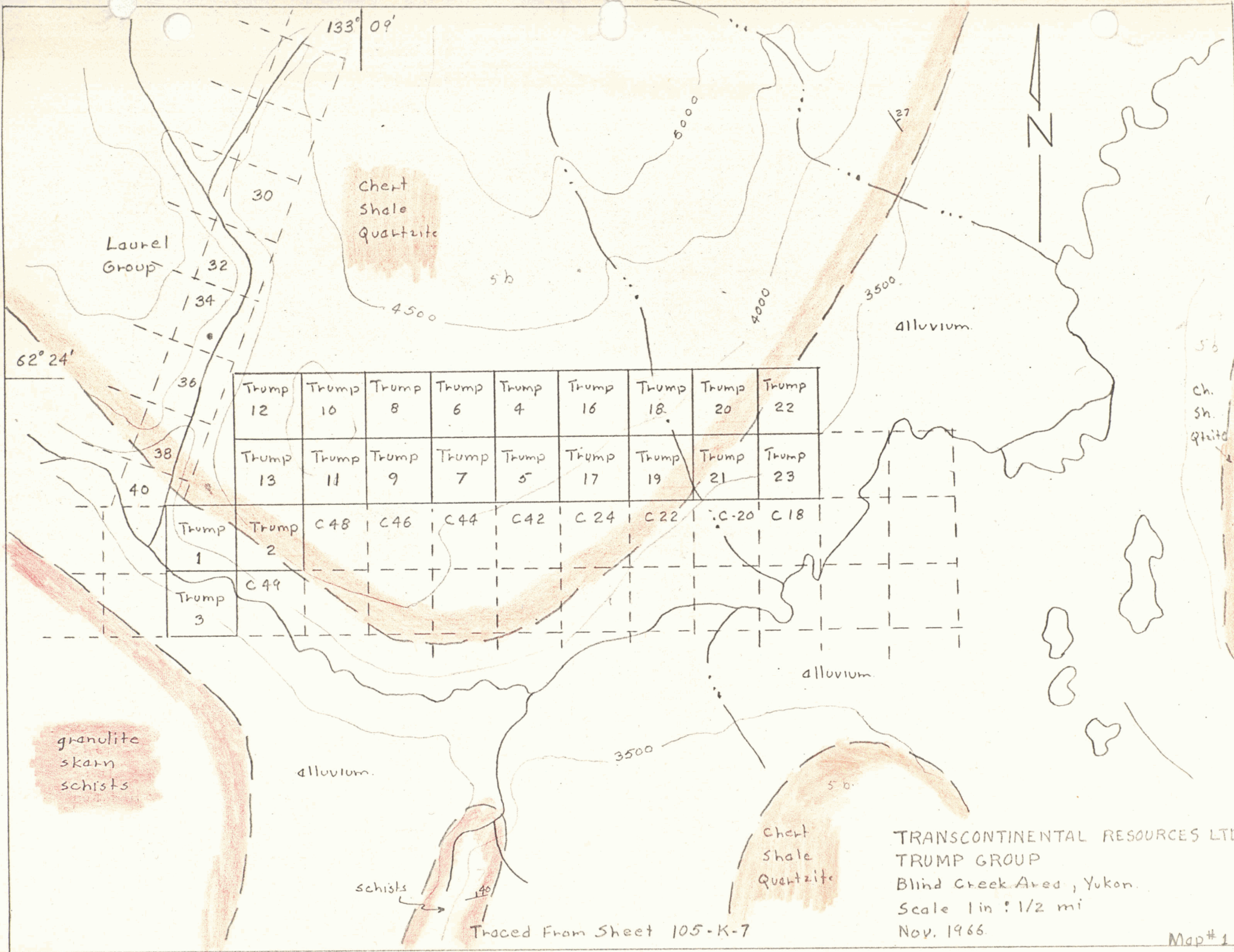
I, Stanley John Hunter, of Vancouver, B. C. do hereby certify that:

1. I am a Consulting Mining Engineer with residence at 6476 Churchill Street, Vancouver, B. C.
2. I am a Registered Professional Engineer in the Provinces of British Columbia and Ontario.
3. I am a graduate of the University of British Columbia in Mining Engineering and have practised my profession for 18 years.
4. I am not a vendor, member of the Board of Directors, or a regular employee of Transcontinental Resources Ltd. to whom this report is directed.
5. I have no interest, direct or indirect, in the properties or securities of Transcontinental Resources Ltd. nor do I expect to have any such interest.
6. This report is based upon an examination of the survey data, discussions with Canadian Aero Services staff and from my general knowledge of the area gained from examinations of the claims and district in August 1965, April 1966 and June 1966.



Vancouver, B. C.  
November 19, 1966

S. J. Hunter, P. Eng.  
Consulting Mining Engineer



133° 09'

Chert  
Shale  
Quartzite

Laurel  
Group

62° 24'

Trump 12	Trump 10	Trump 8	Trump 6	Trump 4	Trump 16	Trump 18	Trump 20	Trump 22
Trump 13	Trump 11	Trump 9	Trump 7	Trump 5	Trump 17	Trump 19	Trump 21	Trump 23
Trump 1	Trump 2	C-48	C-46	C-44	C-42	C-24	C-22	C-20 C-18
Trump 3	C-49							

granulite  
skarn  
schists

alluvium.

alluvium

Chert  
Shale  
Quartzite

TRANSCONTINENTAL RESOURCES LTD  
TRUMP GROUP  
Blind Creek Area, Yukon.  
Scale 1 in = 1/2 mi  
Nov. 1966.

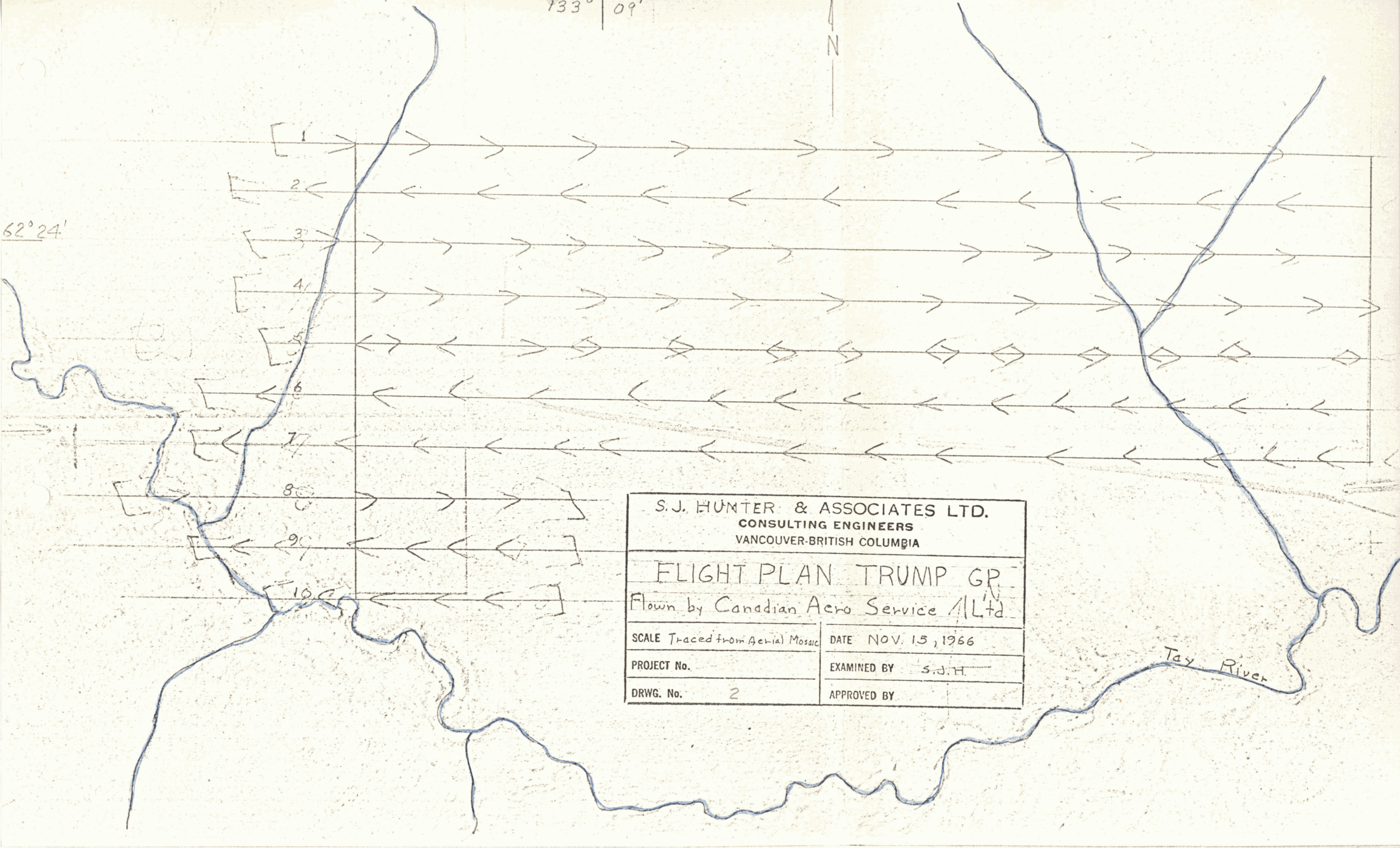
Traced From Sheet 105-K-7

Map #1

733° 09'

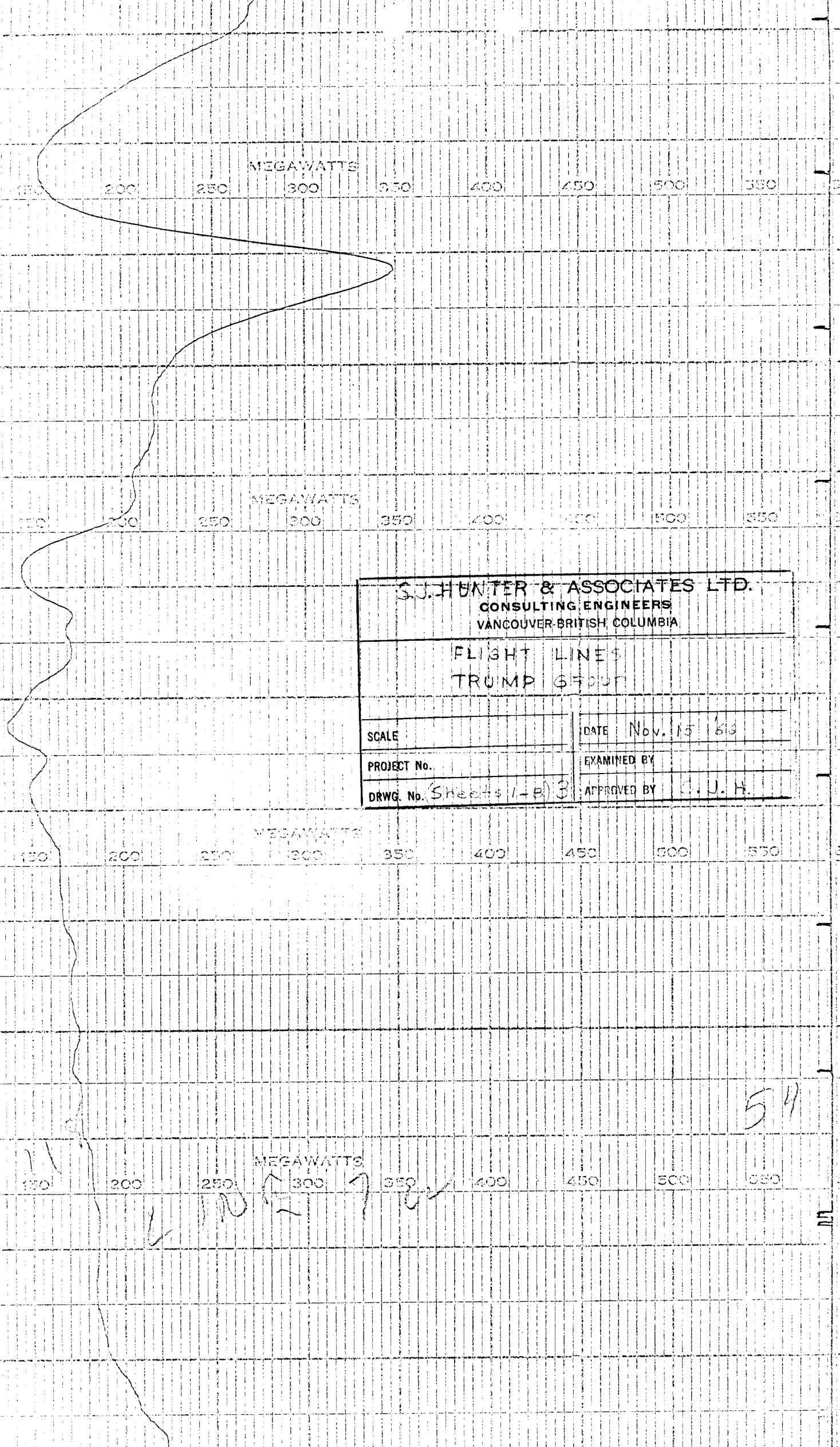


62° 24'



S. J. HUNTER & ASSOCIATES LTD. CONSULTING ENGINEERS VANCOUVER-BRITISH COLUMBIA	
FLIGHT PLAN TRUMP GR Flown by Canadian Aero Service / Ltd	
SCALE Traced from Aerial Mosaic	DATE NOV. 15, 1966
PROJECT No.	EXAMINED BY S.J.H.
DRWG. No. 2	APPROVED BY

Tay River



MEGAWATTS

150 200 250 300 350 400 450 500 550 600

MEGAWATTS

150 200 250 300 350 400 450 500 550 600

<b>S.J. HUNTER &amp; ASSOCIATES LTD.</b> CONSULTING ENGINEERS VANCOUVER-BRITISH COLUMBIA	
FLIGHT LINES TRUMP GROUP	
SCALE	DATE Nov. 15 1963
PROJECT No.	EXAMINED BY
DRWG. No. (Sheets 1-B) 3	APPROVED BY S.J.H.

MEGAWATTS

150 200 250 300 350 400 450 500 550 600

MEGAWATTS

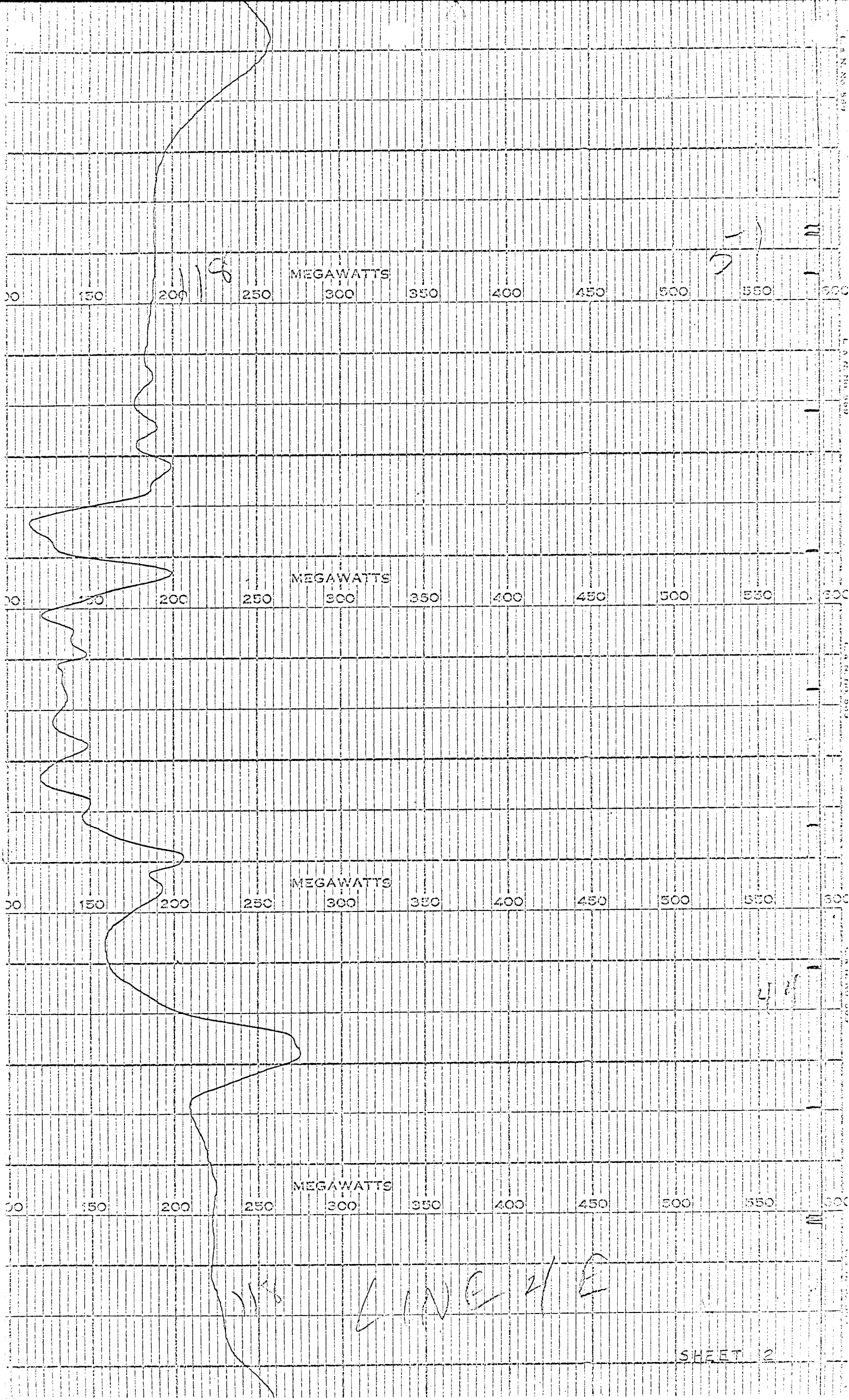
150 200 250 300 350 400 450 500 550 600

54

SHEET 1

MEGAWATTS

150 200 250 300 350 400 450 500 550 600



MEGAWATTS

0 100 200 250 300 350 400 450 500 550 600

MEGAWATTS

0 100 200 250 300 350 400 450 500 550 600

MEGAWATTS

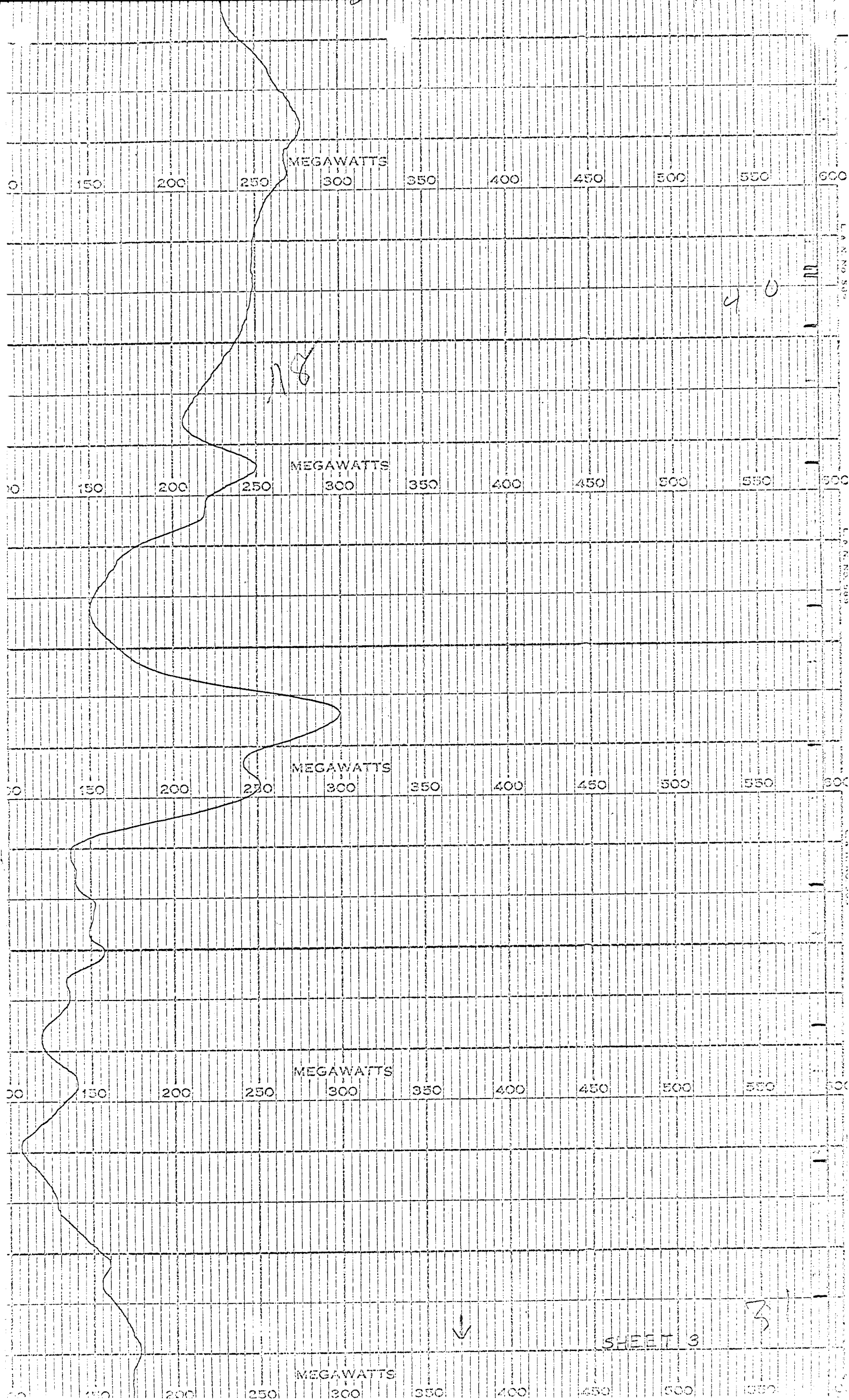
0 100 200 250 300 350 400 450 500 550 600

MEGAWATTS

0 100 200 250 300 350 400 450 500 550 600

118 LINE 2/E

L.A. N. NO. 589  
L.A. N. NO. 589  
L.A. N. NO. 589  
L.A. N. NO. 589



MEGAWATTS

0 150 200 250 300 350 400 450 500 550 600

40

118

MEGAWATTS

0 150 200 250 300 350 400 450 500 550 600

MEGAWATTS

0 150 200 250 300 350 400 450 500 550 600

MEGAWATTS

0 150 200 250 300 350 400 450 500 550 600

MEGAWATTS

0 150 200 250 300 350 400 450 500 550 600

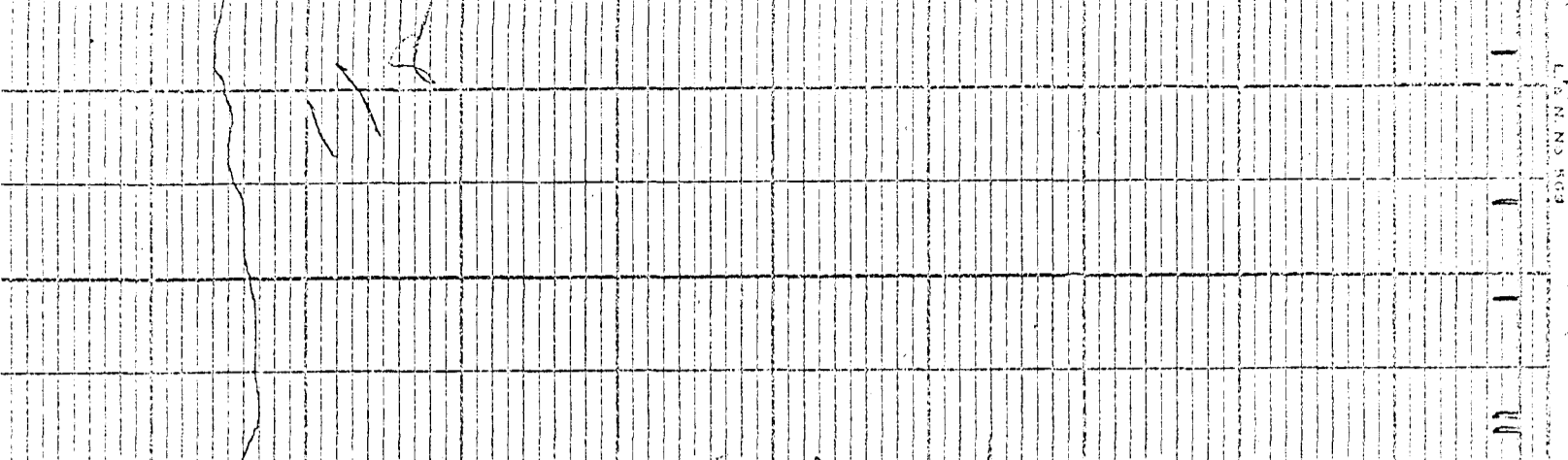


SHEET 3

3

MEGAWATTS

0 150 200 250 300 350 400 450 500 550 600



MEGAWATTS

0 150 200 250 300 350 400 450 500 550 600

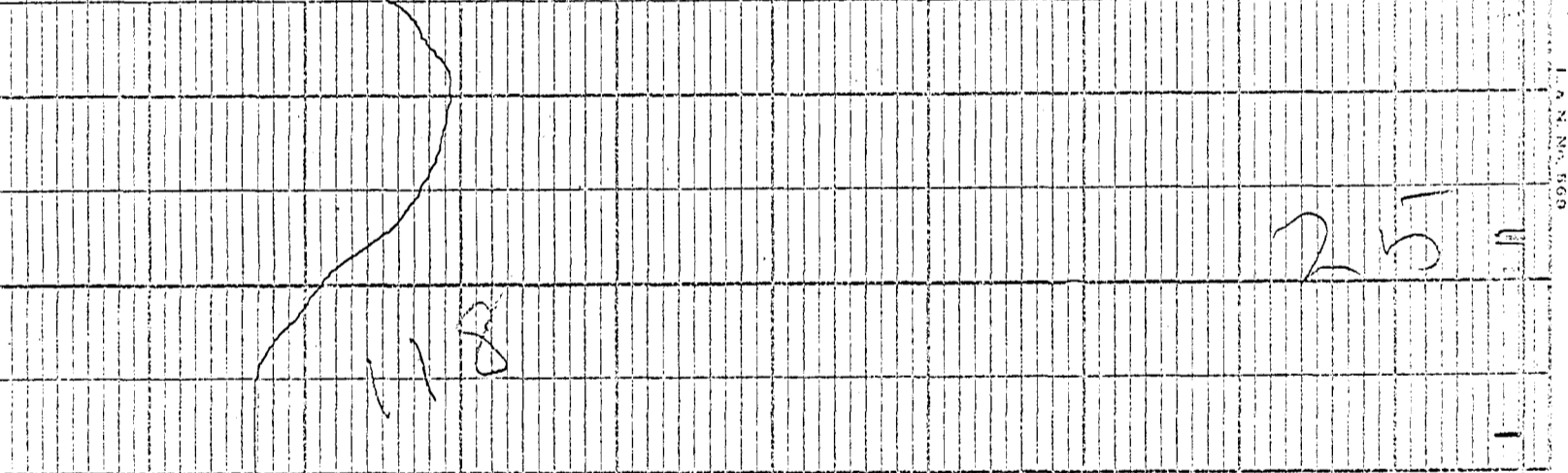
6W



MEGAWATTS

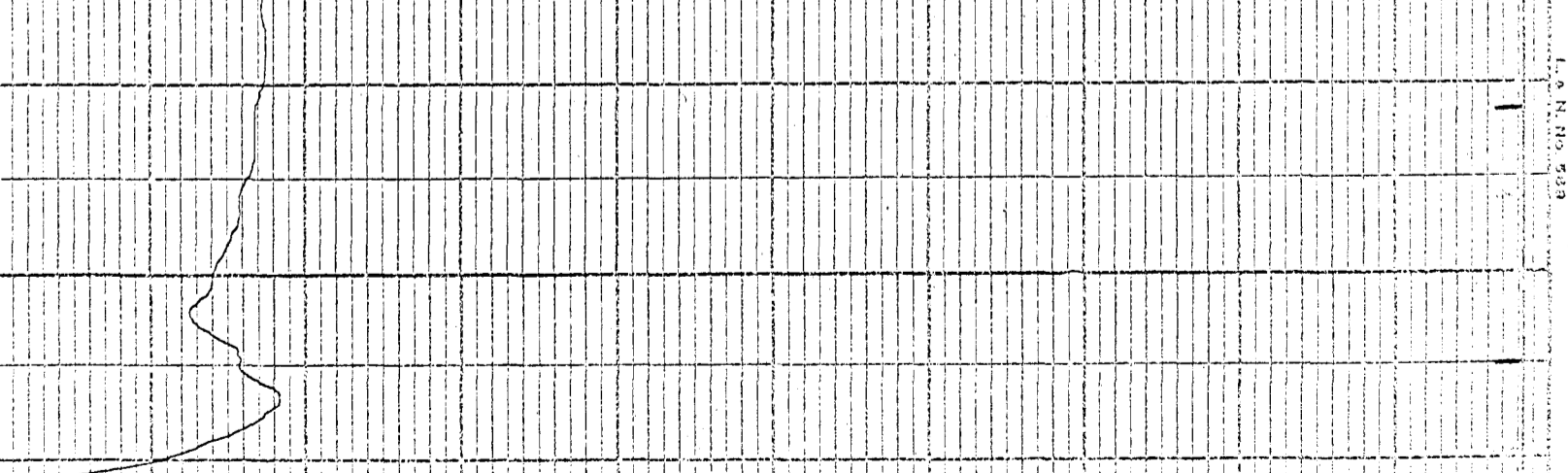
0 150 200 250 300 350 400 450 500 550 600

25



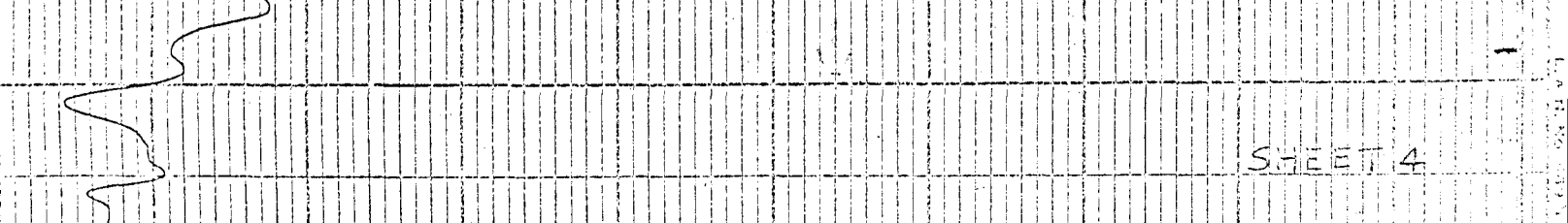
MEGAWATTS

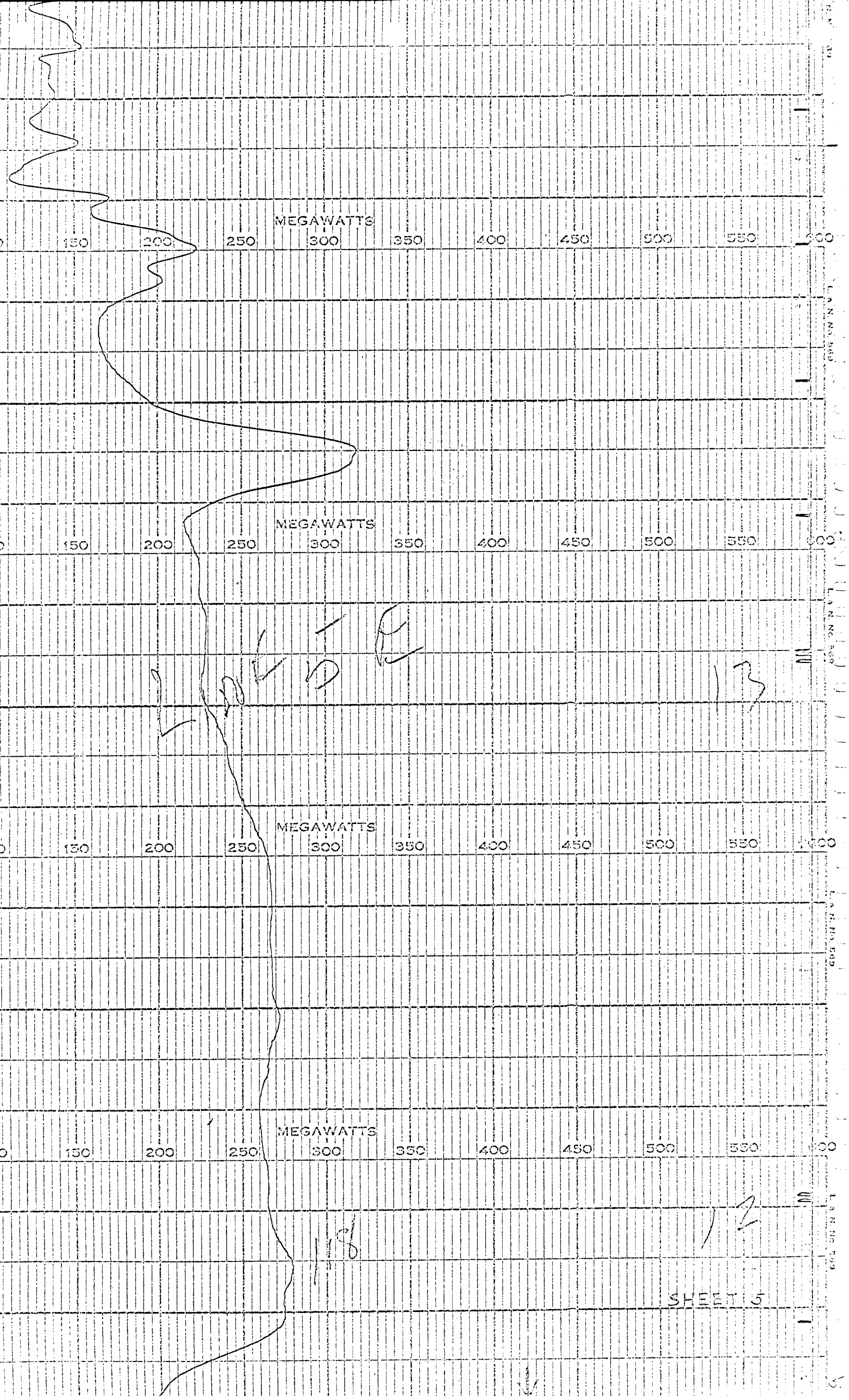
0 150 200 250 300 350 400 450 500 550 600



MEGAWATTS

0 150 200 250 300 350 400 450 500 550 600





MEGAWATTS

150 200 250 300 350 400 450 500 550 600

MEGAWATTS

150 200 250 300 350 400 450 500 550 600

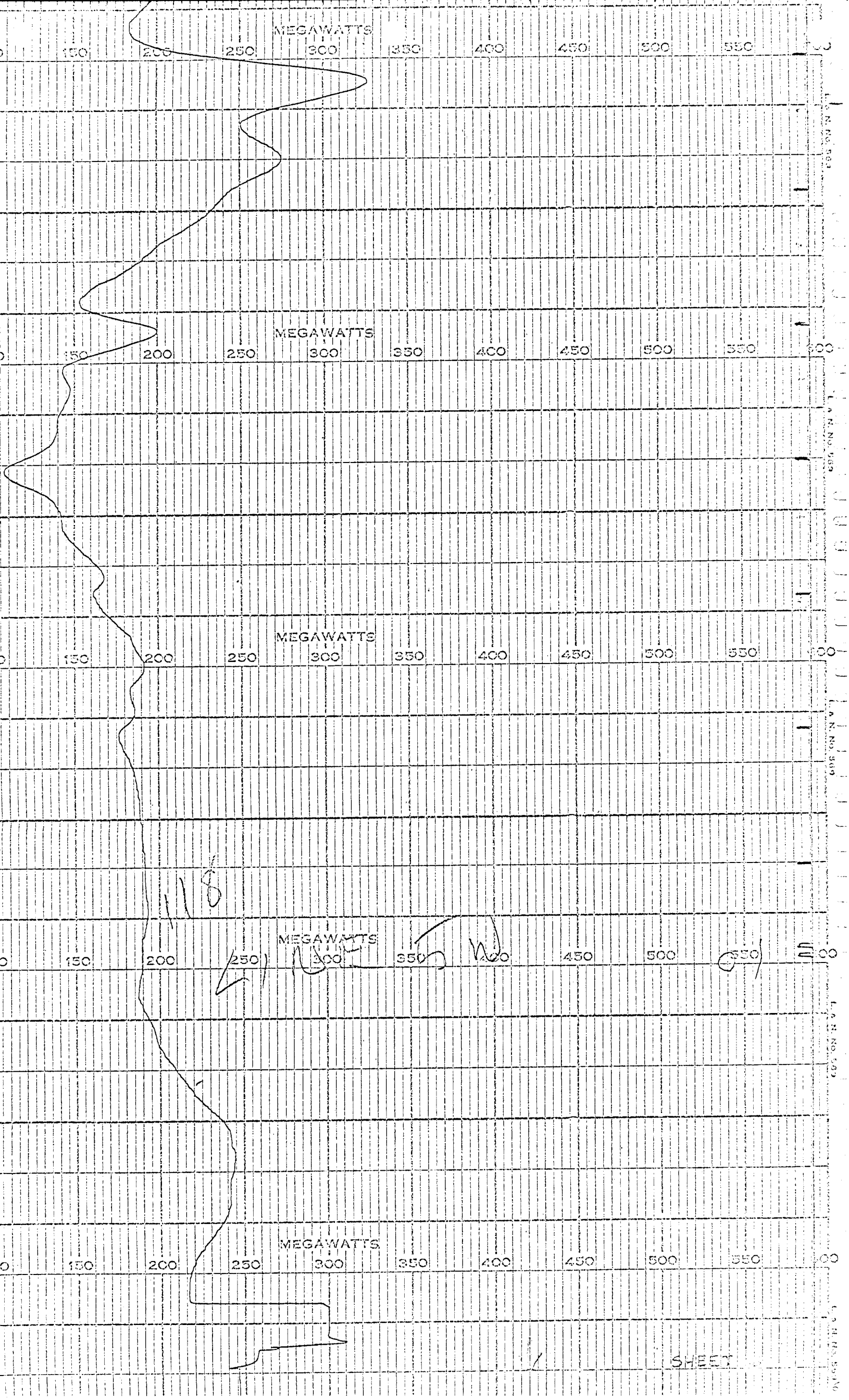
MEGAWATTS

150 200 250 300 350 400 450 500 550 600

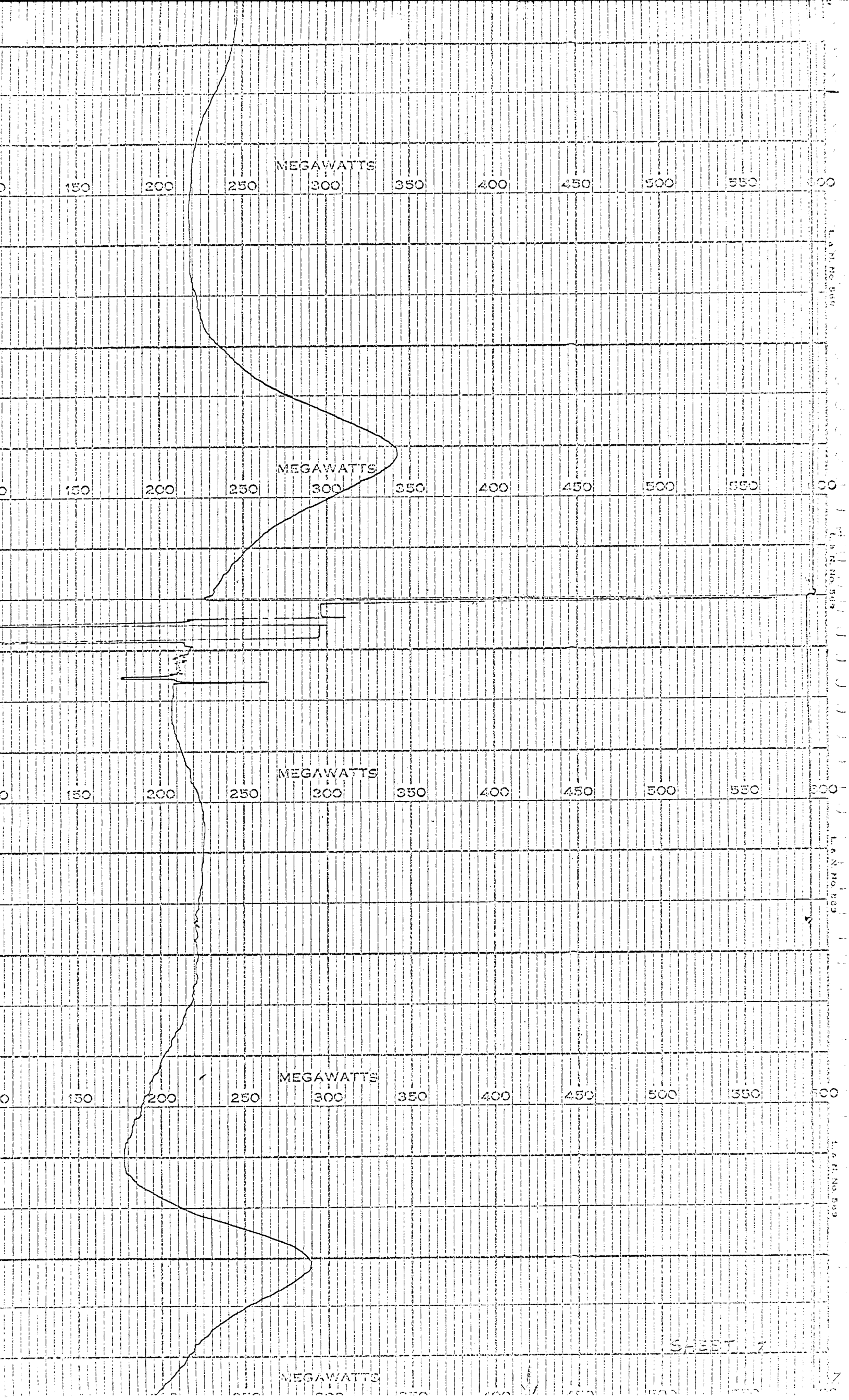
MEGAWATTS

150 200 250 300 350 400 450 500 550 600

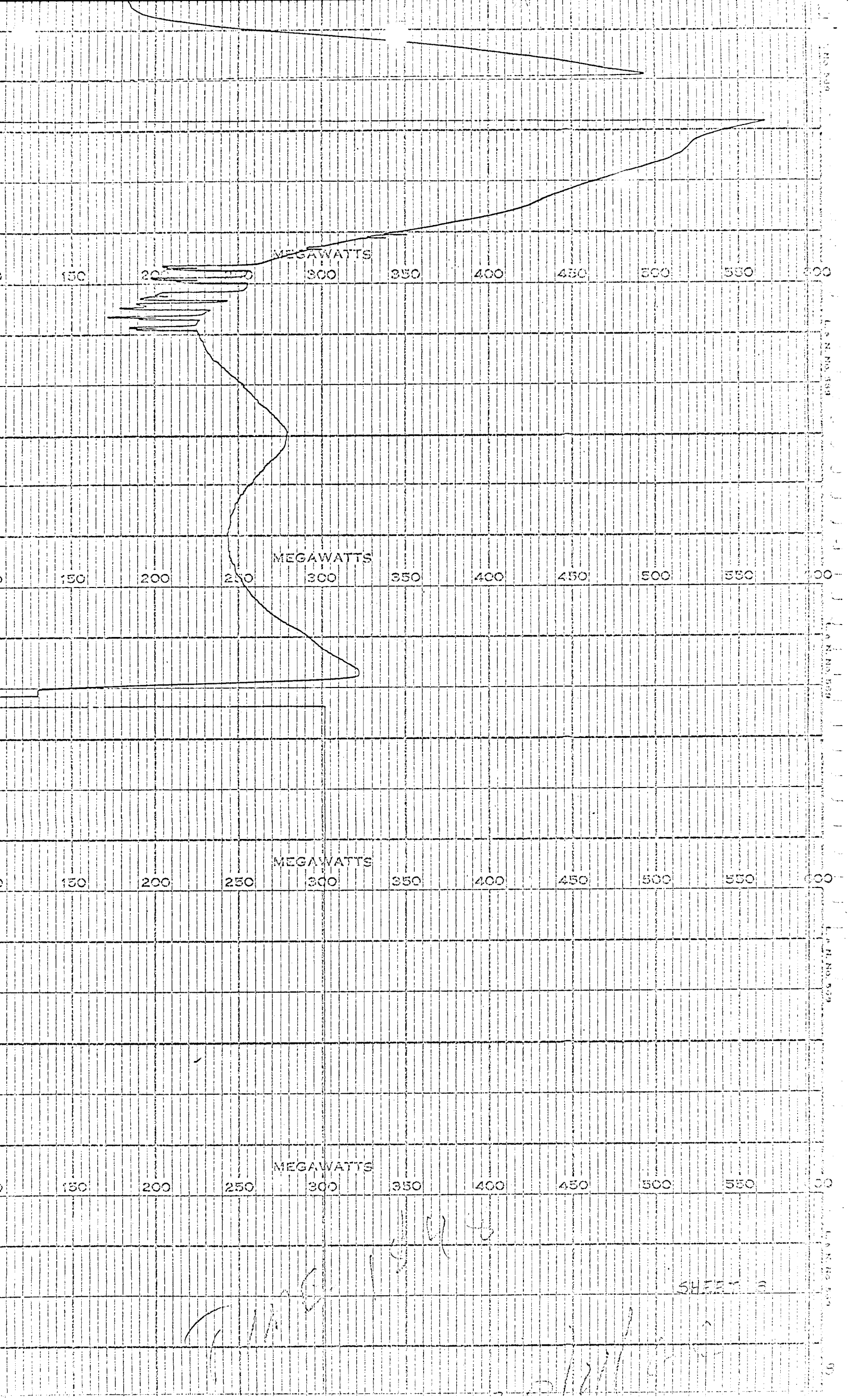
LAKES



L.A.R. NO. 583  
L.A.R. NO. 584  
L.A.R. NO. 585  
L.A.R. NO. 586  
L.A.R. NO. 587  
L.A.R. NO. 588



L.A.N. No. 589  
L.A.N. No. 589  
L.A.N. No. 589  
L.A.N. No. 589



MEGAWATTS

150 200 300 350 400 450 500 550 600

MEGAWATTS

150 200 250 300 350 400 450 500 550 600

MEGAWATTS

150 200 250 300 350 400 450 500 550 600

MEGAWATTS

150 200 250 300 350 400 450 500 550 600

Handwritten notes and signatures at the bottom of the page, including the word 'SHEET' and some illegible scribbles.

PAY \_\_\_\_\_ DATE Aug. 4, 1966

TO THE ORDER OF:

TRANSCONTINENTAL RESOURCES LIMITED

NOT NEGOTIABLE

CANADIAN AERO SERVICE LIMITED  
HUNT CLUB ROAD, BOX 468 RR #5  
OTTAWA, ONTARIO

To THE ROYAL BANK OF CANADA **DUPLICATE**  
685 WEST HASTINGS ST.  
VANCOUVER 2, B. C.

REMITTANCE ADVICE - PLEASE DETACH BEFORE DEPOSITING CHEQUE

PAYROLL ENDING	HRS.	RATE	TOTAL EARNINGS	DEDUCTIONS				AMOUNT
				INCOME TAX	UN. INS.	M.S.A.	MISC.	
			as attached					353.65

EMPLOYEE. THIS IS A STATEMENT OF YOUR EARNINGS AND DEDUCTIONS. DETACH FOR YOUR PERMANENT RECORD.

**CANADIAN AERO SERVICE LIMITED**  
RESOURCES DEVELOPMENT ENGINEERING

HUNT CLUB ROAD, BOX 468, R.R. #5

July 22nd, 1966. **OTTAWA • CANADA**

TELEPHONE 822-0121

Mr. S. J. Hunter & Assoc.,  
Room 406,  
1033 Davie Street,  
Vancouver, British Columbia.

No 8375

To helicopter magnetic survey over the Trump Claim Group, Yukon Territory:

1 day @ \$300.00 per day	\$ 300.00
25 L/M @ \$1.50 per L/M	37.50
Pro-rated mobilization and demobilization at cost	<u>16.15</u>
	<u>\$ 353.65</u>

*CK  
To process  
to Hunter & Assoc.  
Resubmit  
J. S. H.*