

WATSON LAKE M.D.

MAP No.

ASSESSMENT REPORT
N. M. E. A. P.
CONFIDENTIAL
OPEN FILE



TYPE OF
WORK:

GEOLOGICAL
GEOCHEMICAL

091687

105 F 8, 9

REPORT FILED UNDER	Amerlin Exploration Services Ltd.	DOCUMENT NO	[REDACTED]
DATE PERFORMED	21 July - 10 Sept. 1985	DATE FILED:	16 December 1985
LOCATION - LAT.	61°30'N	AREA:	Ketza River
LONG.	132°12'W		
CLAIM NO.	KETZA 43-72; YA72424-YA72453 KETZA 101-102; YA72482-YA72483		
VALUE \$	4,800.00		
WORK DONE BY	Amerlin Exploration Services Ltd.		
WORK DONE FOR	High River Resources Ltd. and Quillo Resources Inc.		
REMARKS	<p>Silver-lead-zinc mineralization is hosted by Lower Cambrian carbonates and consists of veins and replacement faults. Siluro-Devonian carbonates host galena and sphalerite bearing quartz veins. Float of auriferous arsenopyrite occurs at the edge of the claim block which is adjacent to the BOOM (17) occurrence.</p> <p style="text-align: right;">40x 85 p. 128</p>		

115-CARL


091687



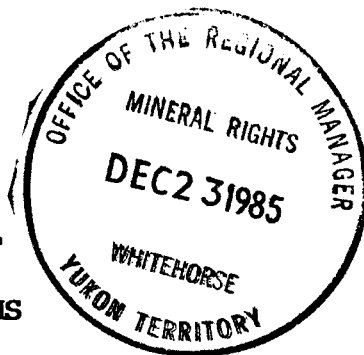
The 1985 work program consisted of geological mapping, prospecting and limited talus fines and stream sediment sampling.

Float and rubble sampling of galena-rich vein material assayed 42.8% Pb, 1230 g/t Ag and 4.76% Zn. Float of arsenopyrite assayed 28.08% As, 33.6 g/t Au, 54.9 g/t Ag and .76% Pb.

Geochemical sampling indicated a number of moderate Pb-Zn-Ag anomalies on the property.



**PRELIMINARY
GEOLOGICAL AND GEOCHEMICAL REPORT
ON THE KETZA 43-72, 101, 102 CLAIMS**



Watson Lake Mining District, Y.T.
NTS 105F/9,8
(61°30'N, 132°12'W)

for

HIGH RIVER RESOURCES LTD.
715 - 525 Seymour Street
Vancouver, B.C. V6B 3H9

and

QUILLO RESOURCES INC.
16821 - 113 Avenue
Edmonton, Alberta T5M 2X2

by

Carl G. Verley, B.Sc., Geologist
AMERLIN EXPLORATION SERVICES LTD.
422 - 470 Granville Street
Vancouver, B.C. V6C 1V5
(604) 689-1966

December 1985

CLAIMS: Ketza 43-72, 101, 102 inclusive
LOCATION: 34 miles (55 km) south of Ross River, Y.T.
DATE: July 21 to September 10, 1985

091687

This report has been examined by
the Geological Evaluation Unit
under Section 53 (4) Yukon Quartz
Mining Act and is allowed as
representation work in the amount
of \$ 4,800⁰⁰.


 14 Feb. 1986
Regional Manager, Exploration and
Geological Services for Commissioner
of Yukon Territory.



TABLE OF CONTENTS

	Page
SUMMARY AND CONCLUSIONS	2
INTRODUCTION	4
Location	4
Access	5
Previous Work	5
PROPERTY	6
GEOLOGY	8
Lithologies	9
Structure	11
Mineralization	12
GEOCHEMISTRY	15
RECOMMENDATIONS	16
REFERENCES	17
APPENDICES:	
A. Assay and Analytical Data	
B. Statutory Declaration	
C. Personnel	
D. Writer's Certificate	

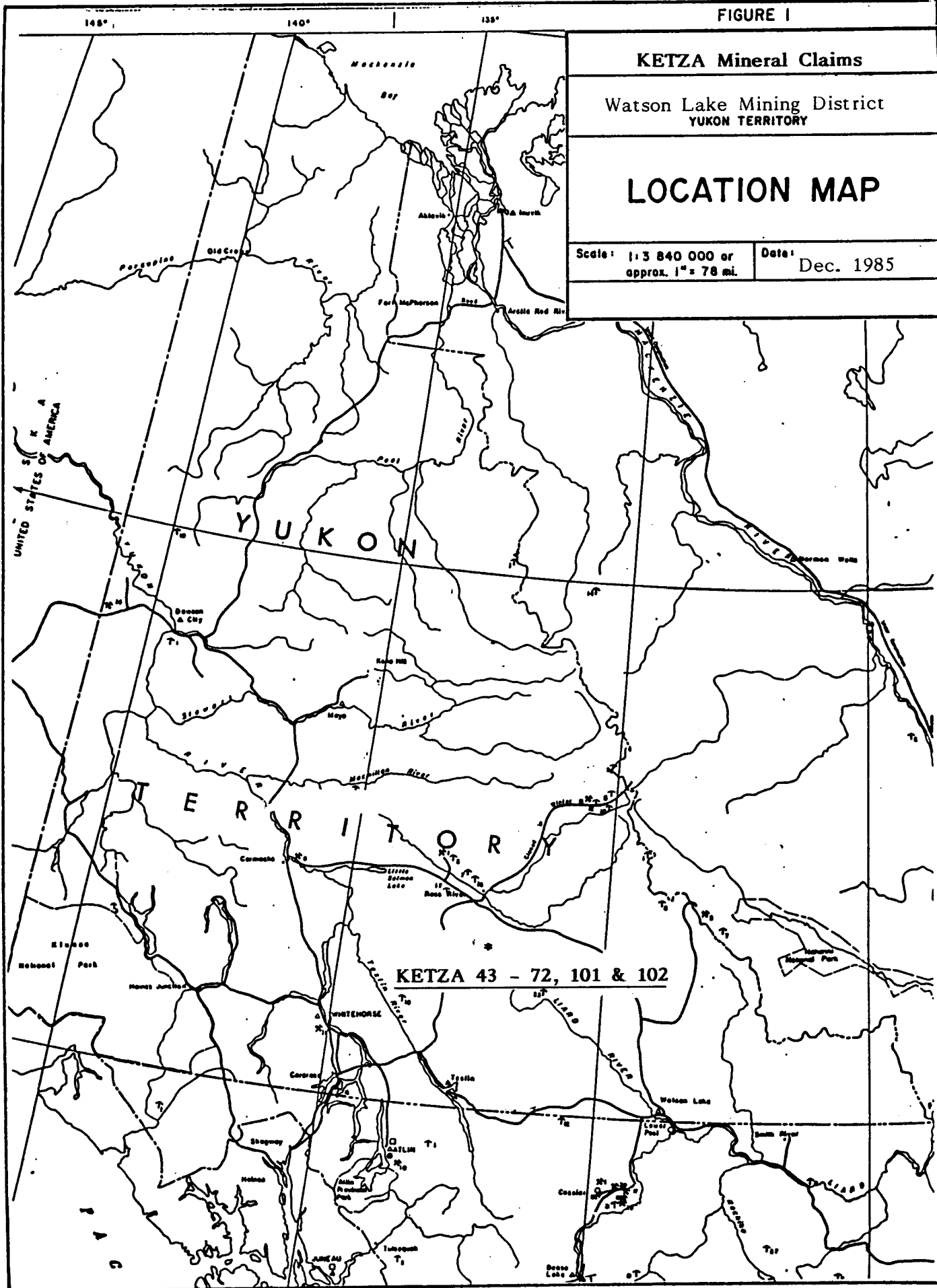
List of Figures

Figure 1.	Location Map	1
2.	Claim Map	7

Plates

Plate 1.	Geology
2.	Au, Ag Geochemistry
3.	As, Cu Geochemistry
4.	Pb, Zn Geochemistry

FIGURE I



KETZA Mineral Claims

Watson Lake Mining District
YUKON TERRITORY

LOCATION MAP

Scale: 1:3 840 000 or
approx. 1" = 78 mi.

Date: Dec. 1985

KETZA 43 - 72, 101 & 102

S U M M A R Y A N D C O N C L U S I O N S

High River Resources Ltd. and Quillo Resources Inc. are joint owners of the Ketzá 43-72, 101 and 102 mineral claims. The claims are situated in the Pelly Mountains, Watson Lake Mining District (105F/9, 8), 55 kilometres south-southeast of Ross River, Yukon Territory. The property is accessible by helicopter, however a road to Canamax Resources Inc.'s Ketzá River gold property passes within 4 kilometres of the claims.

The group is underlain by a succession of Lower Cambrian carbonates that are in fault contact with a sequence of carbonates, shales and volcanics ranging from Upper Cambrian to Mississippian in age. Upper Devonian to Mississippian rocks may be allocthonous.

Silver-lead-zinc mineralization occurs in two areas on the claims. The nature and distribution of the

mineralization suggests it is related to a shoot developed within or adjacent to the northwesterly trending fault, in the case of a showing in Lower Cambrian carbonates. Whereas, in an occurrence in Siluro-Devonian carbonates, quartz veins host galena and sphalerite.

Float of auriferous arsenopyrite was also located near the northwest boundary of the claims on ground held by Canamax Resources Inc. There is a high probability that this mineralization extends onto the Ketzia claims and may affect the existence of auriferous manto and chimney deposits on the property.

The current program of work consisted of preliminary mapping, prospecting and limited talus fines and stream sediment sampling. Results of this work are very encouraging and suggest that there is excellent potential for locating gold mineralization in the Lower Cambrian succession on the property. As well, silver-lead-zinc occurrences warrant further evaluation. An exploration program is recommended at an estimated cost of \$12,000.

I N T R O D U C T I O N

This report describes the results of a preliminary evaluation of the Ketzá 43-72, 101, 102 mineral claims. The object of the work was to locate and examine mineral showings on the claims as well as to map and prospect the ground. A limited amount of geochemical sampling was conducted as a part of the program.

LOCATION

The claims are located 55 kilometres south-southeast of Ross River in the Watson Lake Mining District, Y.T. (NTS 105F/9, 8). Centered at latitude $61^{\circ}30'N$ and longitude $132^{\circ}12'W$, the property covers the headwaters of White Creek. Physiographically the ground is predominantly in alpine terrain, but areas below 1500 metres are brush covered. Elevations range from 1300 to just over 1900 metres above sea level.

ACCESS

The property is accessible by four-wheel drive road that leads from the Ketzka River road up to the OXO silver prospect. However, the southern parts of the claims are best accessed by helicopter from Ross River (53 km) or the Ketzka River airstrip (8 km).

PREVIOUS WORK

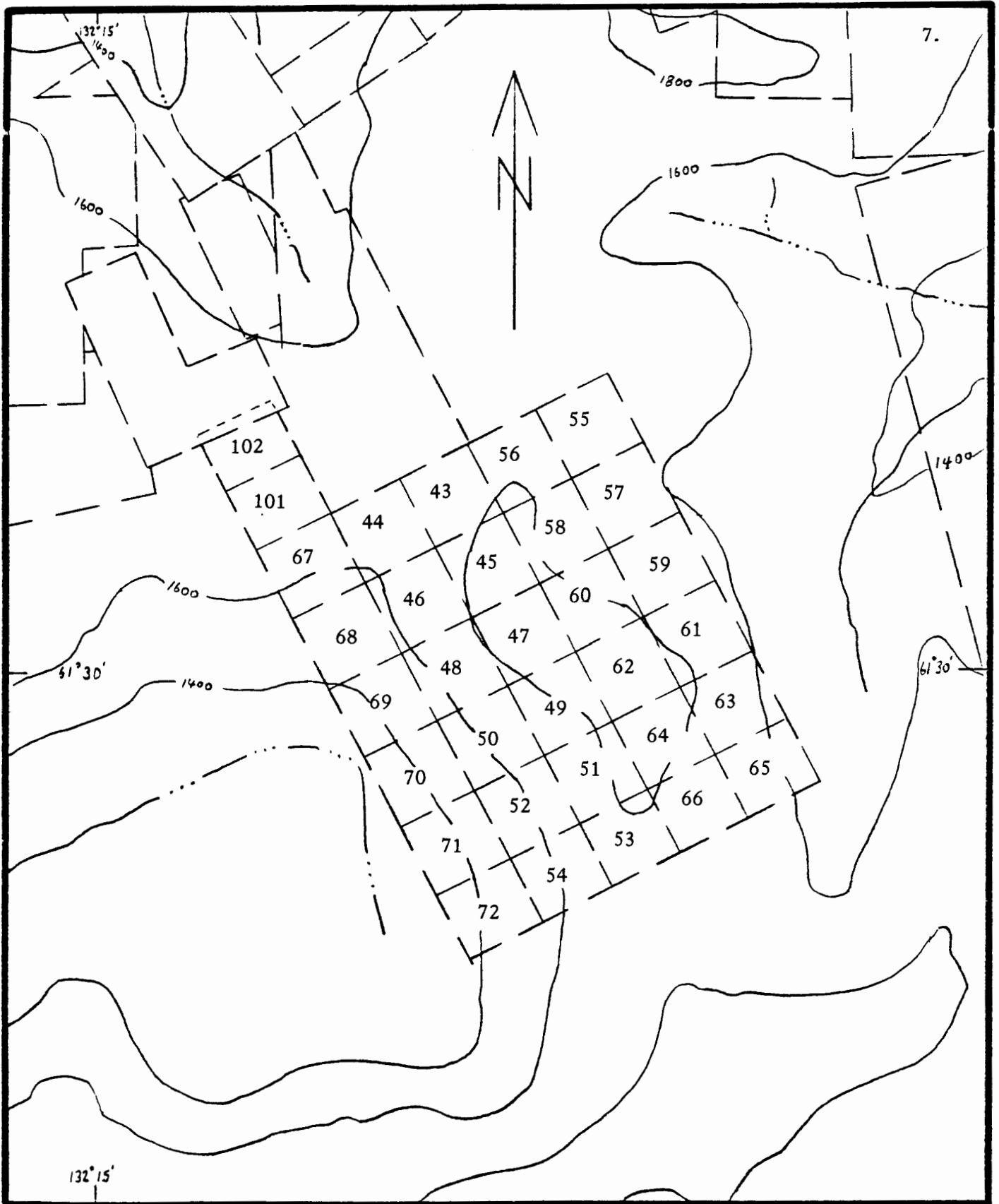
Considerable exploration work has been conducted in the area. In the mid 1950's, Conwest Exploration Company Limited located a number of silver-lead occurrences and carried out exploration and development work on some of these. The OXO silver prospect is situated immediately north of the Ketzka claims. The OXO is hosted in Lower Cambrian carbonates and consists of a lens of massive pyrrhotite with pyrite, galena and sphalerite. It is currently held under option by Canamax Resources Inc.

P R O P E R T Y

The Ketz 43-72, 101 and 102 claims (Figure 2) were acquired by MBW Surveys Ltd. for High River Resources Ltd. in October 1984. The claims are currently subject to a joint venture agreement between High River and Quillo Resources Inc. The property, located in the Watson Lake Mining District (NTS 105F/9, 8), consists of 32 full size mineral claims:

	Grant Number	Expiry Date*
Ketz 43-72	YA72424 - YA72453	April 23, 1987
Ketz 101, 102	YA72482 - YA72483	April 23, 1987

* Pending acceptance of current work, described herein by Mining Recorder.



CLAIM MAP

KETZA 43 - 72, 101 & 102 Mineral Claims

Watson Lake Mining District, Yukon Territory

NTS 105F/8,9

Scale 1:31,680

1" = 1/2 mile

Figure 2.

G E O L O G Y

The Ketzra claims are located in the Pelly Mountains, south-central Yukon. Regionally the property is situated in the Pelly-Cassiar platform, a suspect terrane (Templeman-Kluit, et al., 1985) that consists of a sequence of sediments ranging in age from Precambrian(?) to Lower Devonian. This succession is overlain by allochthonous sediments, volcanics and associated pyroclastics of Upper Devonian to Mississippian age. Rare syenitic intrusives of Mississippian(?) age intrude the sequence, however intrusive activity is not closely associated, spatially, with mineralization in the Ketzra River area.

The following subdivision of lithologies is based on that put forward by Templeman-Kluit (1977) for the Quiet Lake map area.

LITHOLOGIES

Lower Cambrian: carbonates

A sequence, in excess of 400 metres in thickness, consisting of interbedded Lower Cambrian limestone, slate and calcareous slate, underlies 75 percent of the property. The limestone is pale grey weathering, thin-bedded, dark to medium grey and finely crystalline. Individual beds are separated by argillaceous partings which frequently thicken into discreet shaley interbeds. Limestone, in the upper part of the formation, occurs in sequences of variable thickness (2 to 10 metres) which sandwich slate or calcareous slate sequences in the order of several metres thick. Archaeocyathids are common in the section. These locally acted as a framework for the entrapment of carbonate mud; resulting in the subsequent development of carbonate mounds. Such mounds are typically a resistant, orangish-brown weathering, structureless limestone or dolostone.

A major northwesterly trending normal fault with several hundred metres of offset juxtaposes the Lower Cambrian carbonate succession with younger strata on the eastern side of the claims.

Gold mineralization occurs in the upper part of the Lower Cambrian at Canamax's Ketzá River gold property, 3.5 kilometres north of the claim. There is good evidence to suggest that similar gold mineralization is situated in this formation on the Ketzá claim.

Upper Cambrian-Ordovician: limestone, slate.

This unit consists of a succession of thin bedded, pale yellowish-orange weathering interbedded limestone, argillaceous limestone, calcareous slate and slate. The sequence is in fault contact with the Lower Cambrian in the northwest corner of the claims.

Silurian-Lower Devonian: carbonates

An estimated 150 to 200 metres of tan to orangish weathering creamy dolostone underlies the southeastern corner of the property. The sequence is, in general, massive. Silver-lead-zinc mineralization occurs in quartz veins in the carbonates.

Upper Devonian-Mississippian: shale

Dark grey to black, laminated, brownish weathering shale constitutes exposures of this unit. The sequence is estimated to be in the order of 50 metres thick. The contact of this unit with the underlying carbonates is assumed to be normal, however, it may be a fault and the shales may be part of an allochthonous sequence.

Mississippian: volcanics

This unit consists of intermediate volcanics and pyroclastics(?). It forms a small capping to the sedimentary succession in the southeastern part of the property. The volcanics are pale brownish to greenish coloured and generally well foliated. At the contact with the underlying shales, the volcanics are typically strongly sheared, suggesting that this unit is allochthonous.

STRUCTURE

The succession on the Ketz claims has been folded, resulting in local small scale warps, the systematics of which have not been determined. However, there is the vague suggestion that a westerly trending, relatively open anticline is developed in Lower Cambrian carbonate and runs through the centre of the property.

A major northwesterly trending normal fault crosses the claims. Lower Cambrian strata are uplifted, by this fault, several hundred metres relative to younger lithologies. An easterly trending normal fault uplifts Upper Cambrian-Ordovician rocks relative to Siluro-Devonian and younger strata. Silver-lead-zinc mineralization in Lower Cambrian lithologies occurs near the intersection of these two faults. Northeasterly trending quartz veins act as a control for minor amounts of silver-lead-zinc mineralization on the southern part of the claims.

MINERALIZATION

Coarse-grained galena and black sphalerite occur in rubble below cliffs of Lower Cambrian carbonate. The mineralized float is presumably derived from veins within a sequence of medium-bedded dolostones. This showing occurs immediately adjacent to the intersection of a set of north-westerly and easterly trending faults. It is probable that these structures played a role in localizing the mineralization. Selected grab samples of the lead-rich rubble (7563) assayed: 42.80% Pb, 35.88 oz/t Ag, 4.76% Zn and 0.0002 oz/t Au. Zinc-rich float (7564) assayed: 17.71% Zn, 1.37 oz/t Ag, 0.001 oz/t Au and 0.98% Pb.

Galena and sphalerite are also found in narrow (to 4 cm) northeasterly trending quartz veins. The veins form a swarm approximately 30 metres wide in Siluro-Devonian carbonates in the southeast corner of the claims. Vein density is somewhat less than one per metre. A selected grab sample (7554) from one of the veins assayed: 16.00% Pb, 14.77 oz/t Ag, 0.001 oz/t Au, 7.73% Zn and 0.10% Cu.

Float of arsenopyrite found near the northwest end of the claim group, on ground held by Canamax Resources Inc., is

believed to be from a local source that extends onto the Ketzá claims. The material consists predominantly of massive arsenopyrite and may indicate the existence of auriferous manto and chimney deposits on the claims. A selected grab sample (7557) assayed: 28.08% As, 0.198 oz/t Au, 1.60 oz/t Ag and 0.76% Pb.

G E O C H E M I S T R Y

A series of 30 talus fines were collected during the course of mapping and prospecting on the property. As well, stream silt samples were collected from some of the creeks draining the claim area. Sample sites were flagged and labelled. Samples were placed in numbered bags and delivered to ACME Analytical Laboratories Ltd. in Vancouver, B.C. There samples were prepared and analysed for Au, Ag, As, Cu, Pb and Zn as per method and extraction techniques outlined on data sheets (Appendix A).

Talus fines were collected along a total of 675 metres of line at 25 metre intervals at three different locations on the claims. The results of this work (Plates 2-4) outlines some of the areas of known mineralization and suggest that mineralization may persist over a longer area than initially observed. In the case of galena and sphalerite in Lower

Cambrian carbonates lead values below the showing range up to 448 ppm, Zn up to 1292 ppm and Ag to 2.1 ppm. Samples at the end of the line 125 metres north of the showing are still high in lead, zinc and silver (128 ppm, 576 ppm and 1.4 ppm respectively) suggesting more mineralization occurs in exposures above these sample sites. The response to galena and sphalerite in veins on the southern part of the claims is Pb up to 486 ppm, Zn to 1494 ppm and Ag 2.4 ppm. Furthermore, samples collected 200 metres west of the showing are still anomalous in Pb, Zn and Ag (327, 2094 and 3.0 ppm respectively). This suggests that mineralization is more widespread in this area. Further work is warranted to follow up these results.

R E C O M M E N D A T I O N S

Further evaluation of the Ketza 43-72, 101, 102 claims should be directed to locating the source of silver-lead-zinc talus fines anomalies not explained by known showings. As well, it is strongly recommended that further detailed prospecting and mapping be conducted in the vicinity of the arsenopyrite float to determine the source of this mineralization. The estimated cost of such a program is \$12,000.

Respectfully submitted,
AMERLIN EXPLORATION SERVICES LTD.

Carl G. Verley.

Carl G. Verley, F.G.A.C.

Vancouver, B.C.

December, 1985

R E F E R E N C E S

Templeman-Kluit, D.J. and R.I. Thompson, 1985: Tectonics of
The Canadian Cordillera, Geological Association of
Canada short course number 5.

Templeman-Kluit, D.J., 1977: Geology of the Quiet Lake map
area, Geological Survey of Canada Open File 486.

APPENDIX A
ANALYTICAL DATA

ASSAY AND ANALYTICAL DATA

ROCK SAMPLE DESCRIPTIONS

Sample	Description	Reference
KT-86 to 115	Talus fines	Plate 2 to 4
KS-14 to 16	Stream silts	"
KS-21, 30, 31	"	"
KR-12	Chips of limonitic, siliceous limestone associated with quartz veins	"
KR-19	Chips of silicified limestone: bleached, quartz-sericite rock with disseminated pyrite(10%)	"
7554	Selected chips of mineralized vein quartz	"
7557	Selected grab of massive arsenopyrite float	"
7563	Selected grab of galena float	"
7564	Selected grab of sphalerite-rich float	"

ACME ANALYTICAL LABORATORIES LTD.
852 E. HASTINGS ST. VANCOUVER B.C. V6A 1R6
PHONE 253-3158 DATA LINE 251-1011

DATE RECEIVED: SEPT 16 1985

DATE REPORT MAILED: *Sept. 20/85*

GEOCHEMICAL ICP ANALYSIS

.500 GRAM SAMPLE IS DIGESTED WITH 3ML 3-1-2 HCL-HNO3-H2O AT 95 DEG. C FOR ONE HOUR AND IS DILUTED TO 10 ML WITH WATER.
THIS LEACH IS PARTIAL FOR MN.FE.CA.P.CR.MG.BA.TI.B.AL.NA.K.W.SI.ZR.CE.SN.Y.NB AND TA. AU DETECTION LIMIT BY ICP IS 3 PPM.

SAMPLE TYPE: SOILS -80 MESH AND ROCKS AU** ANALYSIS BY FA+AA FROM 10 GRAM SAMPLE.

ASSAYER: *V. Saundry* DEAN TOYE OR TOM SAUNDY. CERTIFIED B.C. ASSAYER

AMERLIN EXPLORATION PROJECT - KETZA FILE # 85-2382 PAGE 1

SAMPLE#	Cu PPM	Pb PPM	Zn PPM	Ag PPM	As PPM	Au** PPB
KT-86	22	119	513	1.4	27	4
KT-87	12	128	576	.8	20	1
KT-88	11	52	156	.7	8	1
KT-89	13	43	121	.4	8	1
KT-90	14	60	134	.4	9	1
KT-91	26	448	1292	2.1	34	2
KT-92	14	148	1010	1.0	26	1
KT-93	53	156	607	1.5	33	2
KT-94	68	184	760	1.8	72	2
KT-95	54	48	317	1.0	28	1
KT-96	49	140	471	1.3	29	1
KT-97	30	77	389	.4	31	1
KT-98	21	70	174	.6	19	1
KT-99	50	95	357	1.1	32	2
KT-100	42	189	632	3.1	49	2
KT-101	40	125	380	.8	23	1
KT-102	48	219	428	.8	33	1
KT-103	46	79	365	1.1	24	1
KT-104	45	123	648	1.6	28	1
KT-105	34	327	2094	3.0	23	2
KT-106	70	56	450	.8	28	2
KT-107	59	57	365	.6	30	1
KT-108	15	486	1494	2.4	36	1
KT-109	31	455	1480	2.1	41	2
KT-110	19	135	732	1.0	21	1
KT-111	18	51	90	.4	13	1
KT-112	16	60	158	.3	11	1
KT-113	55	72	354	.3	29	2
KT-114	91	83	533	.8	30	1
KT-115	48	100	575	.1	47	1

AMERLIN EXPLORATION

PROJECT - KETZA FILE # 85-1785

SAMPLE#	Cu PPM	Pb PPM	Zn PPM	Ag PPM	As PPM	Au** PPB
KS-14	44	65	297	.5	16	2
KS-15	48	51	303	.7	22	2
KS-16	31	131	622	.9	31	2
KS-21	222	143	723	1.0	104	17
KS-30	25	82	413	.6	18	2
KS-31	56	90	256	.5	42	6
KR-12	612	484	329	3.2	180	36
KR-19	14	76	29	2.8	95	5

ACME ANALYTICAL LABORATORIES LTD.
852 E. HASTINGS ST. VANCOUVER B.C. V6A 1R6
PHONE 253-3158 TELEX 04-53124

DATE RECEIVED: AUG 8 1985

DATE REPORT MAILED: *Aug 15/85*

ASSAY CERTIFICATE

1.00 GRAM SAMPLE IS DIGESTED WITH 50ML OF 3-1-2 OF HCL-HNO3-H2O AT 95 DEG. C FOR ONE HOUR.
AND IS DILUTED TO 100ML WITH WATER. DETECTION FOR BASE METAL IS .01%.

- SAMPLE TYPE: ROCK CHIPS AU# 10 GRAM REGULAR ASSAY

ASSAYER: *T. Saundry* DEAN TOYE OR TOM SAUNDY. CERTIFIED B.C. ASSAYER

AMERLIN EXPLORATION PROJECT - KETZA FILE # 85-1785A PAGE 1

SAMPLE#	Cu %	Pb %	Zn %	As %	Ag OZ/T	Au OZ/T
7554	.10	16.00	7.73	-	14.77	.001
7557	.01	.76	.02	28.08	1.60	.198
7563	.01	42.80	4.76	-	35.88	.002
7564	.05	.98	17.71	-	1.37	.001

APPENDIX B
STATUTORY DECLARATION

STATUTORY DECLARATION

CANADA)
)
 TO WIT:) In the matter of a geological and geochemical report
 on behalf of High River Resources Ltd. and Quillo
 Resources Inc.

I, Carl G. Verley, agent for Amerlin Exploration Services Ltd.
 of 422-470 Granville Street, Vancouver, B.C. V6C 1V5

do solemnly declare, - that geological mapping and geochemical sampling were
 conducted on the KETZA 43 to 72, 101 and 102 mineral claims (inclusive),
 Watson Lake Mining District, Yukon, during the period July 21 to September 10,
 1985. Expenditures for this work include:

Salaries, management fees, consulting	\$2,074.00
Helicopter support1,959.52
Assays and analytical	547.19
Field supplies	99.71
Food	97.91
Fuel	43.81
Hotel113.00
Telephone13.07
Travel expense55.37
Vehicle rental440.00
Report preparation, drafting, photocopying and printing238.87
TOTAL	\$5,682.45

And I make this solemn declaration conscientiously believing it to be
 true and knowing that it is of the same force and effect as if made under
 oath and by virtue of The Canada Evidence Act.

Declared before me at VANCOUVER)
 in the Province of B.C. this)
2nd day of OCTOBER 1985.)

Carl G. Verley

✓ Conrad Kemmerer
 A Commissioner for Oaths for Yukon
 Territory OR Notary Public for B.C.

APPENDIX C
PERSONNEL

P E R S O N N E L

Mr. C. G. Verley
301 - 1867 West 3rd Avenue
Vancouver, B.C. V6J 1K9

Geologist

Mr. Michael Woods
5 Teak Avenue
Whitehorse, Y.T. Y1A 4W5

Field Assistant

APPENDIX D
WRITER'S CERTIFICATE

AMERLIN EXPLORATION SERVICES LTD.

422-470 Granville Street, Vancouver, B.C., Canada V6C 1V5

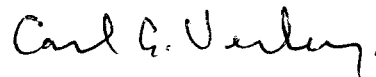
Phone (604) 689-1966

WRITER'S CERTIFICATE

I, Carl G. Verley of Vancouver, British Columbia hereby certify
that:

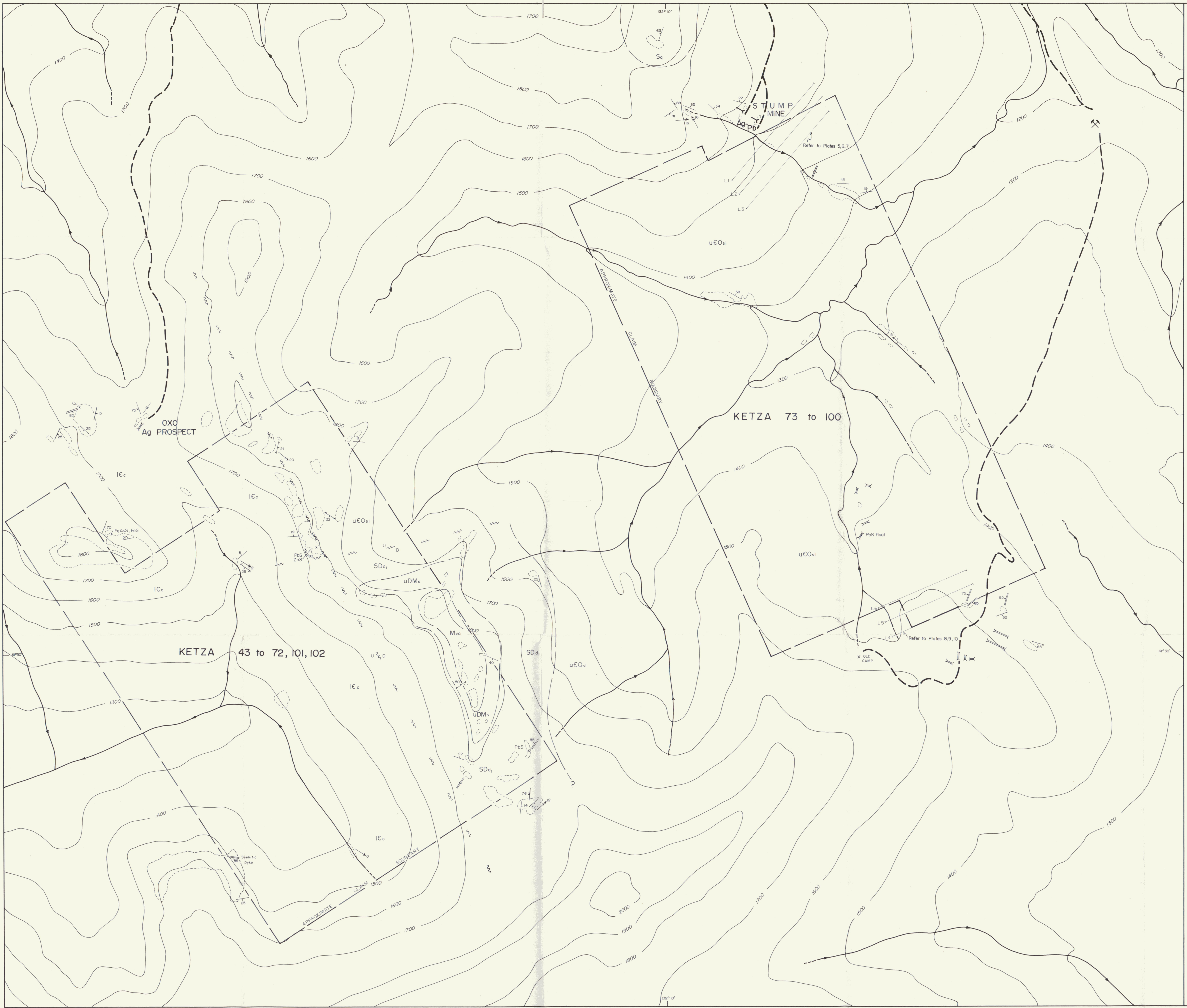
1. I am a geologist residing at 301 - 1867 West 3rd Avenue, Vancouver, B.C. and principal of Amerlin Exploration Services Ltd. 422 - 470 Granville Street, Vancouver, B.C. V6C 1V5.
2. I am a graduate of the University of British Columbia, B.Sc., in 1974, and have practised my profession since that time.
3. I am a Fellow of the Geological Association of Canada.
4. I am the author of this report which is based on work conducted by me on the KETZA 43, to 72, 101, 102 mineral claims during the period July 21 to September 10, 1985.

Amerlin Exploration Services Ltd.



Carl G. Verley, F.G.A.C.

December 6, 1895.
Vancouver, B.C.



LEGEND

LITHOLOGIES

MISSISSIPPIAN

M_{vo} volcanics

UPPER DEVONIAN - MISSISSIPPIAN

uDM_s shale

SILURIAN - DEVONIAN

SD_{d1} carbonates

SILURIAN

Sq quartzite

UPPER CAMBRIAN - ORDOVICIAN

uEO_{s1} limestone, slate, v - volcanic component

LOWER CAMBRIAN

IC_c carbonates, IC_s - shale component

SYMBOLS

- x FeS
x FeAsS
x ZnS
x PbS
- outcrop distribution
- lithologic contact: defined, inferred
- bedding
- cleavage
- jointing
- vein
- fold axis to minor fold
- lineation
- fault: definite, inferred - with sense of movement (up/down)
- adit
- trench
- road

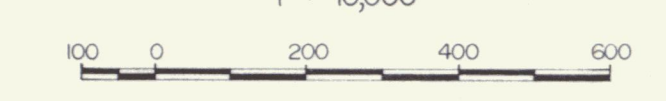
Note: - Geology outside of claim blocks adopted from GSC Open File 486
 - Topography from Dept. of Energy, Mines and Resources: 1:50,000 scale map (105F/9) and 1:250,000 scale map (105 F)
 - Contour interval: 100 metres
 - Magnetic declination: 31.5° (July, 1985)

QUILLO RESOURCES INC.
HIGH RIVER RESOURCES LTD.
KETZA 43-102 CLAIMS

GEOLOGY

KETZA RIVER AREA 105 F-8,9
 WATSON LAKE MINING DIVISION, YUKON

Scale in metres
 1 : 10,000

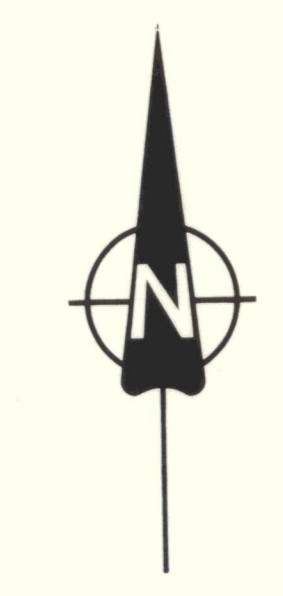
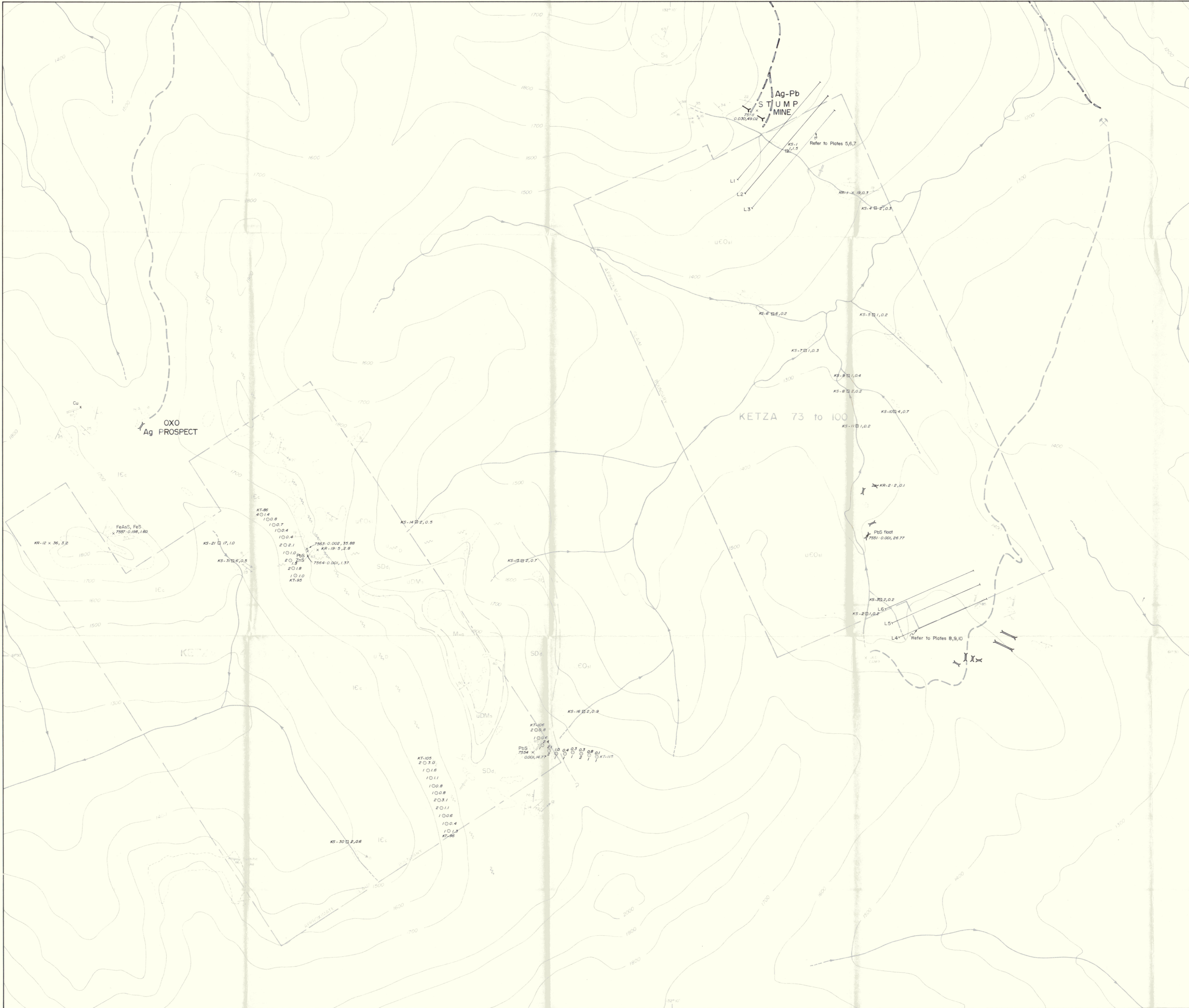


by

AMERLIN EXPLORATION SERVICES LTD.
 422 - 470 Granville Street, Vancouver, B.C. V6C 1V5 **091687**

OCTOBER, 1985

PLATE I



EXPLANATION

- Sample Site**
- 2, 1, 8 Talus fines, Au, Ag
 - × 3, 2, 8 Rock: KR-8 (geochemical analysis) Au, Ag
7551 (assay)
 - 2, 0, 2 Stream silt, Au, Ag

Values

Analysis: Au in ppb, Ag in ppm
Assays: Au, Ag in oz/ton

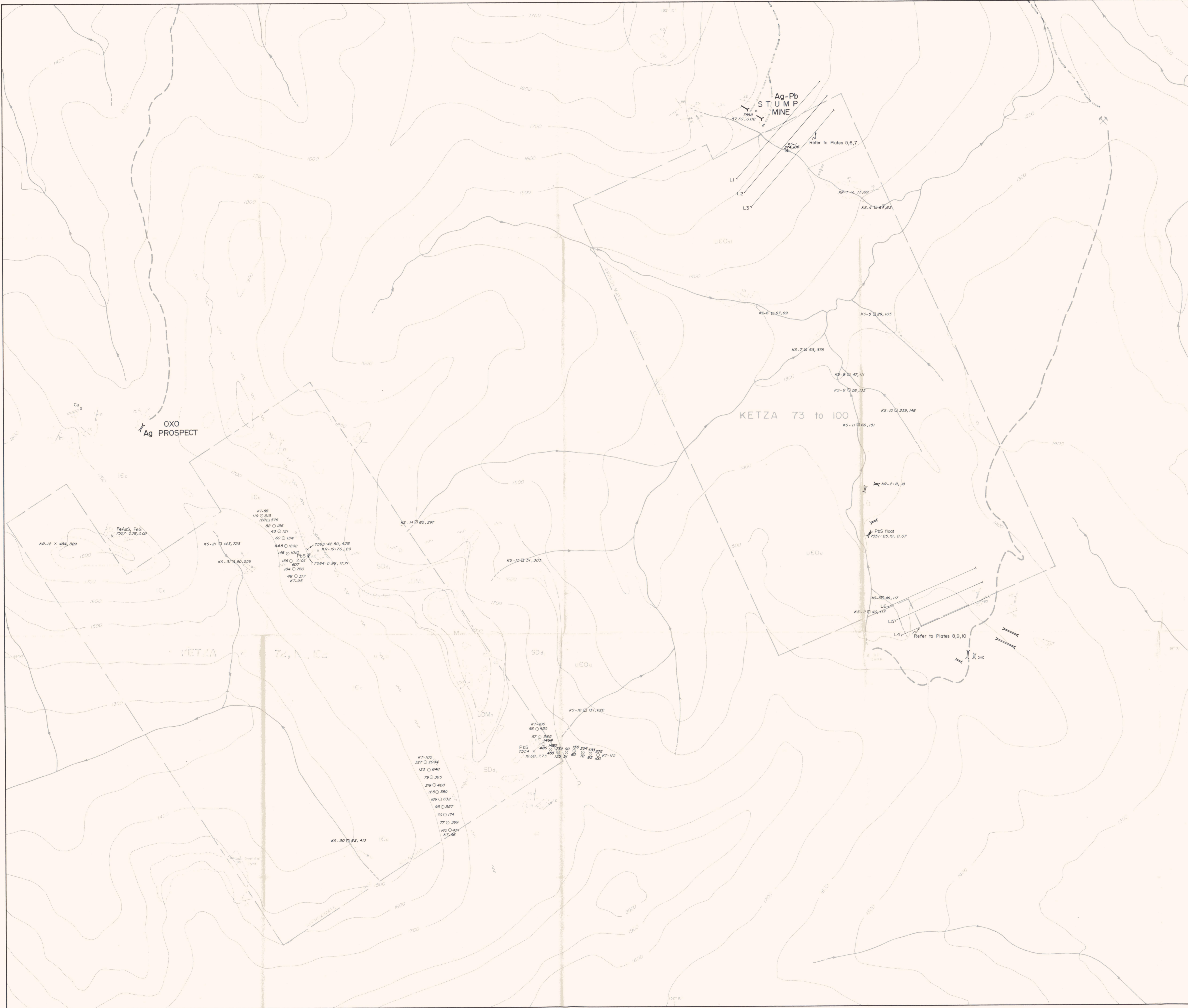
- Background*
 - Possibly anomalous*
 - Anomalous*
- *refer to text for ranges of categories

Note: - Refer to Plate 1 for geology legend.

QUILLO RESOURCES INC.
HIGH RIVER RESOURCES LTD.
KETZA 43-102 CLAIMS
Au, Ag GEOCHEMISTRY
KETZA RIVER AREA 105 F-8,9
WATSON LAKE MINING DIVISION, YUKON

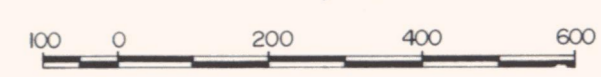
Scale in metres
1 : 10,000
0 100 200 400 600

by
AMERLIN EXPLORATION SERVICES LTD. 091687
422 - 470 Granville Street, Vancouver, B.C. V6C 1V5



EXPLANATION

- Sample Site**
- MO O 47 Talus fines, Pb, Zn
 - x 76, 29 Rock: 7551 (geochemical analysis) Pb, Zn
 - 56, 133 Stream silt, Pb, Zn
- Values**
- Analysis: Pb, Zn in ppm
 - Assays: Pb, Zn in %
- Background*
 - Possibly anomalous*
 - Anomalous*
- *refer to text for ranges of categories
- Note: - Refer to Plate I for geology legend.

QUILLO RESOURCES INC.
 HIGH RIVER RESOURCES LTD.
 KETZA 43-102 CLAIMS
Pb, Zn GEOCHEMISTRY
 KETZA RIVER AREA 105 F-8, 9
 WATSON LAKE MINING DIVISION, YUKON
 Scale in metres
 1 : 10,000

 by
 AMERLIN EXPLORATION SERVICES LTD. **091687**
 422 - 470 Granville Street, Vancouver, B.C. V6C 1V5
 OCTOBER, 1985 PLATE 4