

WATSON LAKE M.D.

MAP No.

ASSESSMENT REPORT  
N. M. E. A. P.  
CONFIDENTIAL  
OPEN FILETYPE OF  
WORK: GEOLOGICAL  
GEOCHEMICAL

091686

105 F 9

REPORT FILED UNDER	Amerlin Exploration Services Ltd.	DOCUMENT NO.	[REDACTED]
DATE PERFORMED	9-29 July 1985	DATE FILED:	16 December 1985
LOCATION - LAT.	61°31'N	AREA:	
LONG.	132°09'W		
CLAIM NO.	KETZA 73-100; YA72454-YA72481		
VALUE \$			
WORK DONE BY	Amerlin Exploration Services Ltd.		
WORK DONE FOR	High River Resources Ltd. and Quillo Resources Inc.		
REMARKS	<p>The property is located 54 km south of Ross River. The 1985 work program consisted of geologic mapping, prospecting, stream sediment and reconnaissance soil sampling. A total of 98 reconnaissance and 75 line soil samples were taken on the property. Significant Pb and Ag anomalies were found at the south end of the claim block.</p> <p>Float material with quartz-galena veining is located in trenches near the soil anomalies. A selected grab sample ran 917.8 g/t Ag, 25.1% Pb, 0.14% Cu and 0.07% Zn.</p>		

14 - SHARON

091686  
[REDACTED]

4EX 85 p.120 ✓

**PRELIMINARY  
GEOLOGICAL AND GEOCHEMICAL REPORT  
ON THE KETZA 73-100 CLAIMS**



Watson Lake Mining District, Y.T.  
NTS 105F/9, 8  
(61°31'N, 132°09'W)

for

**HIGH RIVER RESOURCES LTD.**  
715 - 525 Seymour Street  
Vancouver, B.C. V6B 3H9

and

**QUILLO RESOURCES INC.**  
16821 - 113 Avenue  
Edmonton, Alberta T5M 2X2

by

**Carl G. Verley, B.Sc., Geologist**  
**AMERLIN EXPLORATION SERVICES LTD.**  
422 - 470 Granville Street  
Vancouver, B.C. V6C 1V5  
(604) 689-1966

December 1985

**CLAIMS:** Ketza 73-100 inclusive  
**LOCATION:** 34 miles (54 km) south of Ross River, Y.T.  
**DATE:** July 9 to 29, 1985

**091686**

This report has been examined by  
the Geological Evaluation Unit  
under Section 53 (4) Yukon Quartz  
Mining Act and is allowed as  
representation work in the amount  
of \$ 5,600<sup>00</sup>.

 14 Feb. 1986

Regional Manager, Exploration and  
Geological Services for Commissioner  
of Yukon Territory.

1986



## TABLE OF CONTENTS

	Page
SUMMARY AND CONCLUSIONS . . . . .	2
INTRODUCTION . . . . .	4
Location . . . . .	4
Access . . . . .	5
Previous Work . . . . .	5
PROPERTY . . . . .	6
GEOLOGY . . . . .	8
Mineralization . . . . .	9
GEOCHEMISTRY . . . . .	10
RECOMMENDATIONS . . . . .	17
ESTIMATED COST OF RECOMMENDED EXPLORATION PROGRAM . . . . .	18
REFERENCES . . . . .	20
APPENDICES:	
A. Assay and Analytical Data	
B. Statutory Declaration	
C. Personnel	
D. Writer's Certificate	

### List of Figures

Figure 1.	Location Map . . . . .	1
2.	Claim Map . . . . .	7
3.	Probability Graph of Au, Ag in soils . . . . .	12
4.	Probability Graph of As, Zn in soils . . . . .	13
5.	Probability Graph of Cu, Pb in soils . . . . .	14

### Plates

Plate 1.	Geology
2.	Au, Ag Geochemistry
3.	As, Cu Geochemistry
4.	Pb, Zn Geochemistry
5.	Au, Ag Soil Geochemistry L1-L3
6.	As, Cu
7.	Pb, Zn
8.	Au, Ag Soil Geochemistry L4-L6
9.	As, Cu
10.	Pb, Zn



## S U M M A R Y   A N D   C O N C L U S I O N S

High River Resources Ltd. and Quillo Resources Inc. are joint owners of the Ketzá 73 to 100 mineral claims. The claims are situated in the Pelly Mountains, Watson Lake Mining District (105F/9, 8), 54 kilometres south-southeast of Ross River, Yukon Territory. The property is accessible by helicopter, however a road to Canamax Resources Inc.'s Ketzá River gold property passes within 5 kilometres of the claims.

The group is underlain by a sequence of Upper Cambrian to Ordovician carbonates and phyllites. Deformation of the package is evident in outcrop, however, poor exposure limits structural interpretation.

The claims lie immediately south of the Stump mine, a former silver-lead prospect on which underground development work was conducted. Silver-lead-zinc mineralized float is located in old trenches on the south part of the property.

The current program of work consisted of preliminary geological mapping, prospecting, stream sediment and reconnaissance soil sampling. Results of this work indicate silver-lead soil anomalies exist on the south part of the claims. Further work is strongly recommended to further evaluate this area. Estimated cost of the recommended program is \$142,000.

## I N T R O D U C T I O N

This report describes the results of a preliminary evaluation of the Ketzá 73 to 100 mineral claims. The object of the work was to locate and examine mineral showings on the claims as well as to map and prospect the ground. A limited amount of geochemical sampling was conducted as a part of the program.

### LOCATION

The claims are located 54 kilometres south-southeast of Ross River in the Watson Lake Mining District, Y.T. (NTS 105F/9, 8). Centered at latitude  $61^{\circ}31'N$  and longitude  $132^{\circ}09'W$ , the property covers the headwaters of an east flowing tributary of the Ketzá River. Physiographically the ground is situated in a brush covered valley bottom with forested gently rolling hills. Elevations range from 1250 to just over 1600 metres above sea level.

**ACCESS**

Washed out bulldozer roads lead to the Stump mine at the north end of the claims and to a series of old trenches on the southern part of the property, allowing access to the property by foot. However, the southern part of the ground is best accessed by helicopter from Ross River (54 km) or the Ketzá River airstrip (6 km).

**PREVIOUS WORK**

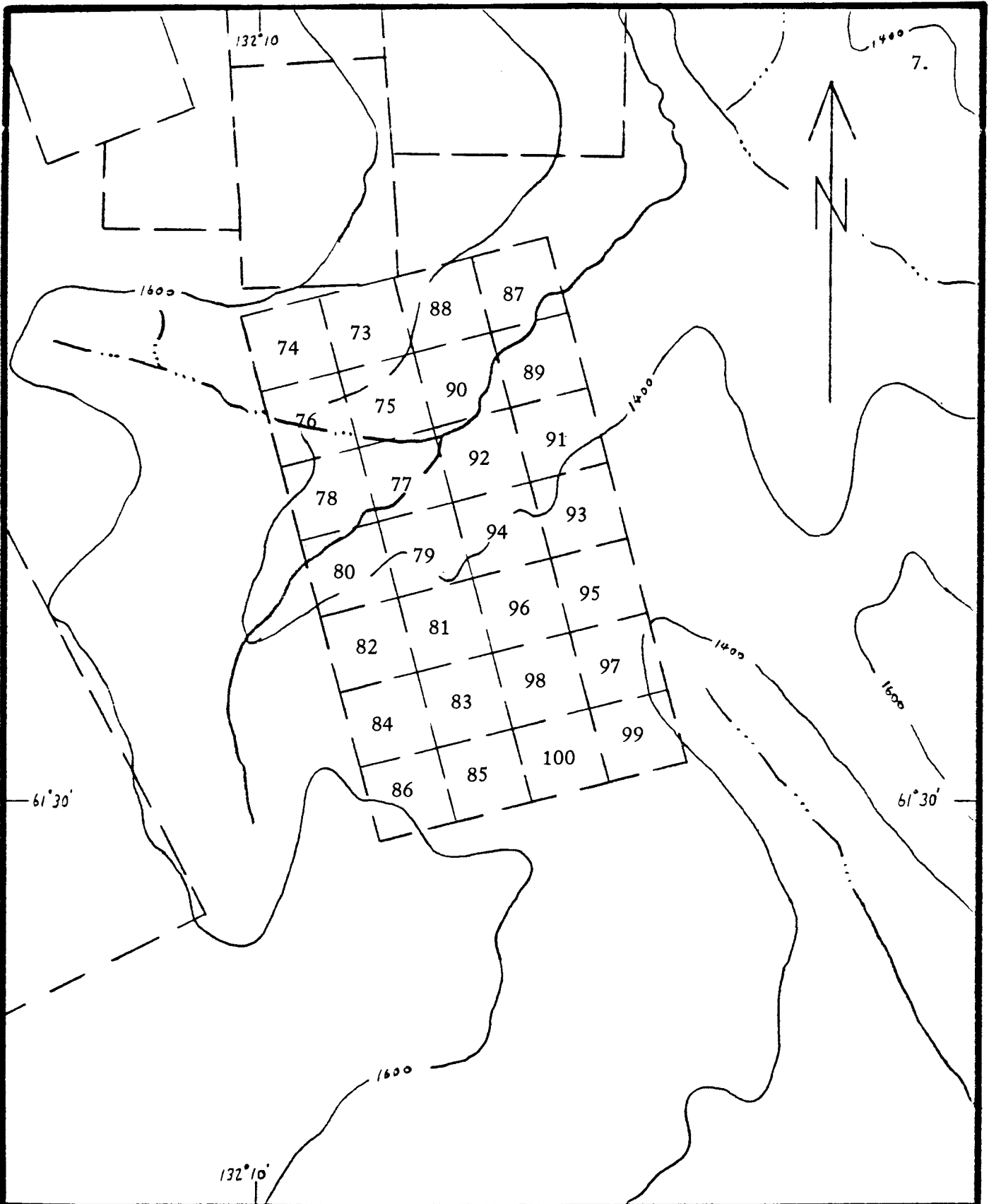
Previous work on the Ketzá 73 to 100 claims was conducted in the mid 1960's by Stump Mines Limited. At this time, underground development work was undertaken on the Stump mine. Northwest Explorers Limited, during 1969, carried out bulldozer trenching on the southern part of the property.

**P R O P E R T Y**

The Ketz 73 to 100 claims (Figure 2) were acquired by MBW Surveys Ltd. for High River Resources Ltd. in October 1984. The claims are currently subject to a joint venture agreement between High River and Quillo Resources Inc. The property, located in the Watson Lake Mining District (NTS 105F/9, 8), consists of 28 full size mineral claims:

<b>Claim(s)</b>	<b>Grant Number</b>	<b>Expiry Date*</b>
Ketz 73-100	YA72454 - YA72481	October 23, 1987

\* Pending acceptance of current work, described herein by Mining Recorder.



**CLAIM MAP**

**KETZA 73 - 100 Mineral Claims**

**Watson Lake Mining District, Yukon Territory  
NTS 105F/8,9**

**Scale 1:31,680  
1" = 1/4 mile**

**Figure 2.**

## G E O L O G Y

The Ketz 73 to 100 are located in the Pelly Mountains, south-central Yukon. Regionally the property is situated in the Pelly-Cassiar platform, a suspect terrane (Templeman-Kluit, et al., 1985) that consists of a sequence of sediments ranging in age from Precambrian(?) to Lower Devonian. This succession is overlain by allochthonous sediments, volcanics and associated pyroclastics of Upper Devonian to Mississippian age. Rare syenitic intrusives of Mississippian(?) age intrude the sequence, however intrusive activity is not closely associated, spatially, with mineralization in the Ketz River area.

Upper Cambrian to Ordovician limestone and phyllite underlie the claims. This formation consists of pale yellowish-orange weathering rock varying from grey to greenish phyllite, calcareous phyllite, argillaceous limestone to medium

to dark grey limestone. The sequence is thin-bedded and interbedded. Exposures amount to less than five percent of the claim area. This, combined with a lack of distinct marker units within the sequence, make a structural interpretation impossible at present. However, there is evidence indicating the formation is deformed. A cleavage is well developed in the phyllitic rocks. Locally compositional layering is transposed to the cleavage plane. Quartz veins on the southern part of the property are, in general, westerly dipping, striking north-northeast to northeast.

#### **MINERALIZATION**

Float of galena in quartz vein material is located in and adjacent to trenches on the southern part of the property. Bedrock exposure in this area is very poor. The source of the mineralized float does not appear to have been uncovered by the trenching. A selected grab sample of mineralized float (7551) from one of the trenches assayed: 26.77 oz/t Ag, 25.10% Pb, 0.14% Cu and 0.07% Zn. Further detailed soil sampling and geophysical prospecting are warranted to determine the source of this float.

Lead-silver mineralization on the dumps at the Stump mine were examined. This material consists of massive, fine-grained steel galena enveloped in coarse-grained manganese-siderite with lesser disseminated pyrite. A grab sample of the galena (7558) assayed 57.70% Pb, 49.02 oz/t Ag, 0.21% Cu, 0.02% Zn and 0.03 oz/t Au. The Upper Cambrian to Ordovician carbonate-phyllite sequence is host to the lead-silver mineralization.

## G E O C H E M I S T R Y

A series of 98 soil samples were collected from three lines located on the northern part of the claim group. The purpose of this work was to test for possible southward extension of the Stump mine vein system. Three lines were also sampled (75 samples) on the southern part of the claims. The object of this work being to test areas around known float mineralization. As well, stream silt samples were collected from creeks draining the claim area. Sample sites were flagged and labelled. Samples were placed in numbered bags and delivered to ACME Analytical Laboratories Ltd. in Vancouver, B.C. These samples were prepared and analysed for Au, Ag, As, Cu, Pb and Zn as per method and extraction techniques outlined on data sheets (Appendix A).

Probability graphs for the soil results are found in Figures 3, 4 and 5. In the case of silver, there appears to be

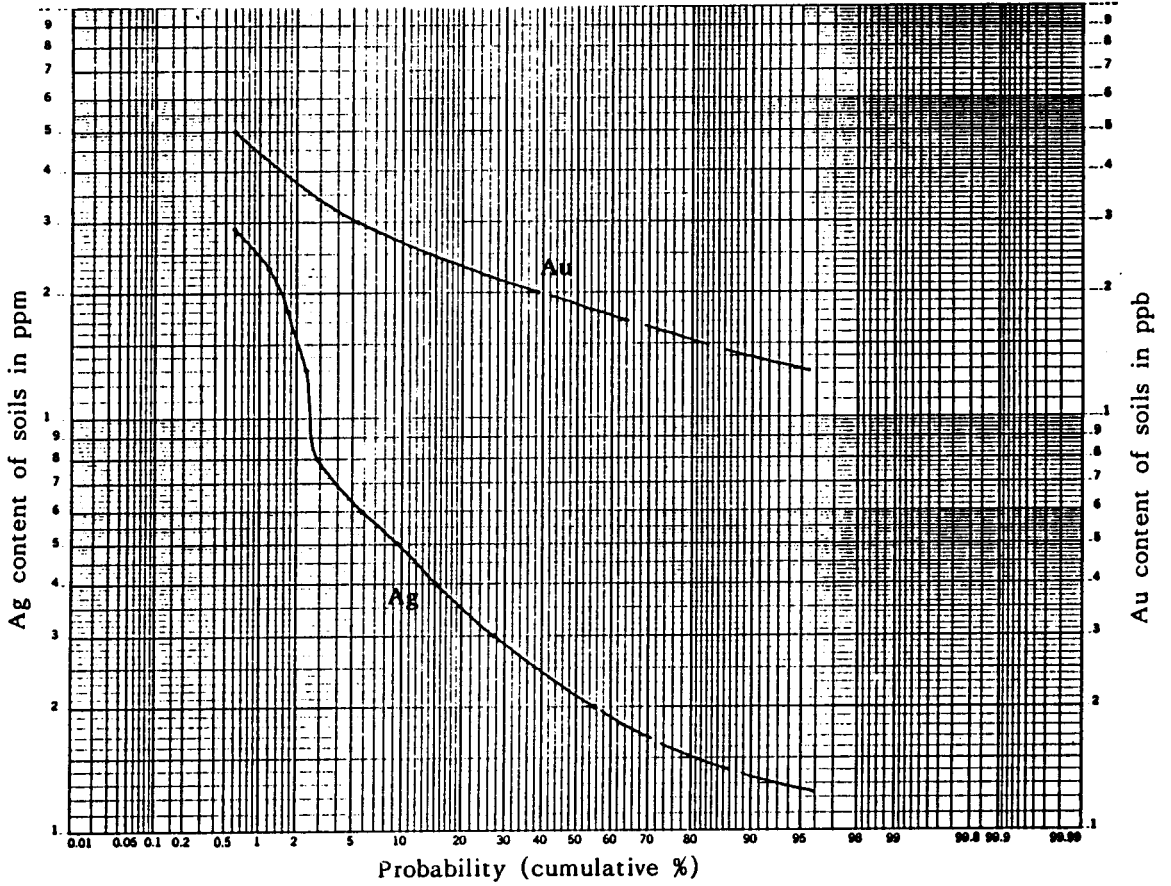


FIGURE 3  
Probability Graph - Gold and Silver in Soils  
KETZA 73 - 100 Claims

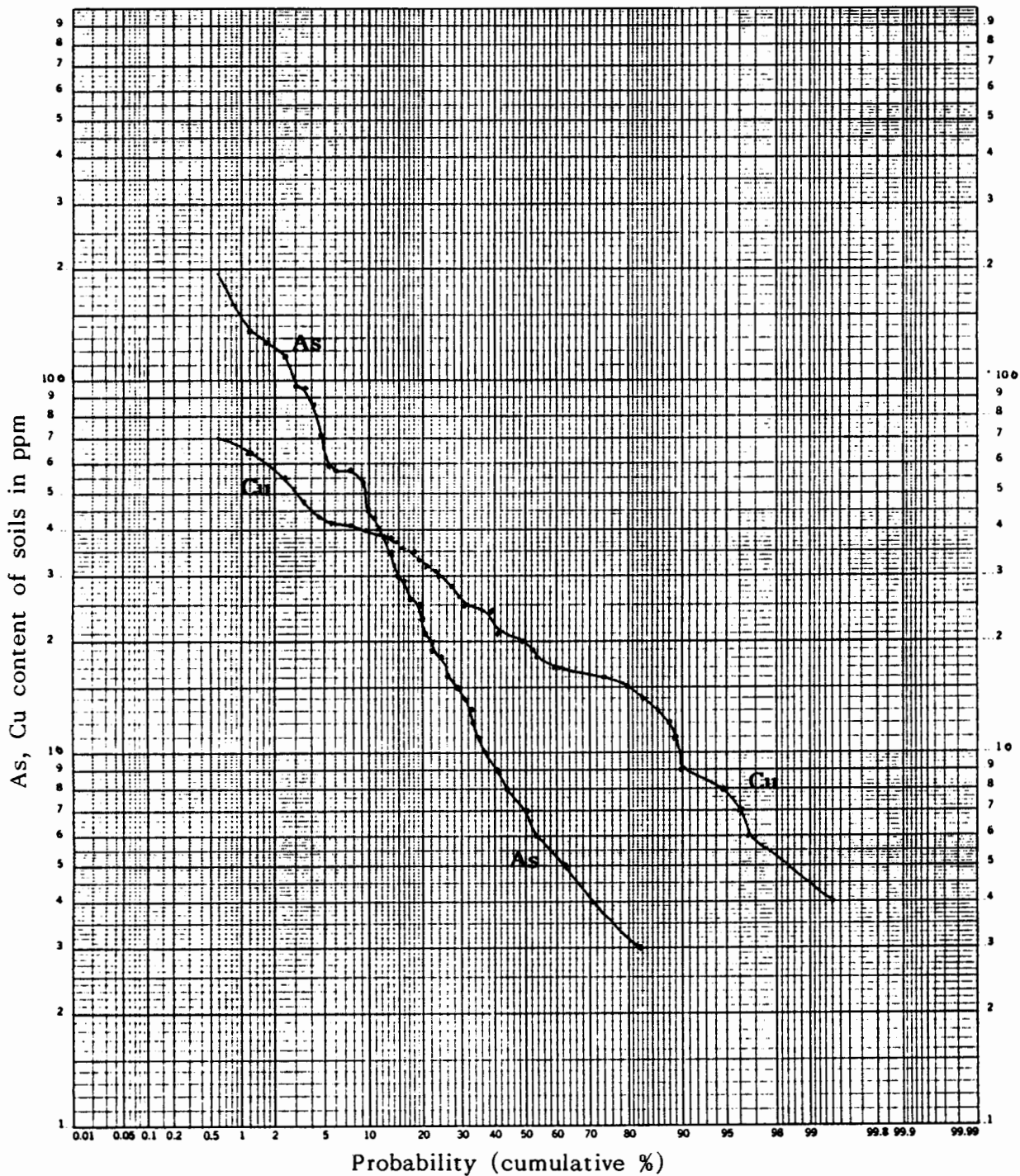


FIGURE 4

Probability Graph - Arsenic and Copper in Soils

KETZA 73 - 100 Claims

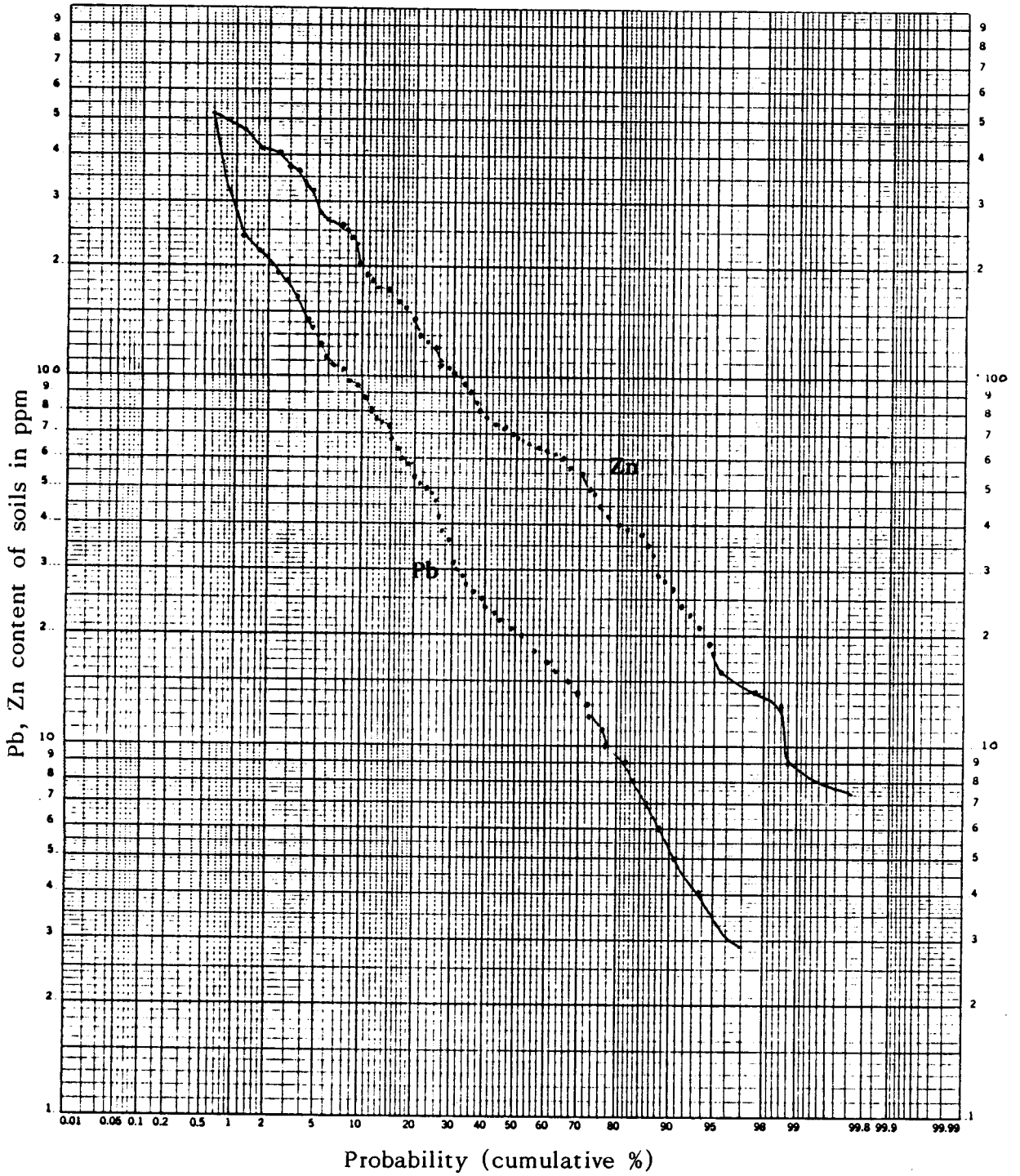


FIGURE 5

Probability Graph - Lead and Zinc in Soils

KETZA 73 - 100 Claims

mixing of two populations - one of which is believed to be anomalous and related to mineralization. For the other elements, such a pattern is not clear. However, an interpretation of the data in terms of background and anomalous categories is tabulated below.

**Table 1**  
**INTERPRETATION OF SOIL SAMPLE DATA**

	Range		Background	Possibly Anomalous	Anomalous
Au	1-	5 ppb	1- 5 ppb	-	-
Ag	0.1-	2.9 ppm	0.1-0.6 ppm	0.7-1.0 ppm	1.0+ppm
As	2-	196 ppm	2- 99 ppm	100+ ppm	-
Cu	1-	70 ppm	1- 70 ppm	-	-
Pb	2-	515 ppm	2-149 ppm	150-299 ppm	300+ppm
Zn	6-	519 ppm	6-299 ppm	300-449 ppm	450+ppm

Results of the sampling (Plates 5 to 10), in light of the above interpretation, indicate that several clusters of anomalous and possibly anomalous values occur on the soil lines. In particular, a cluster of anomalous silver (1.3 to 2.9 ppm) and possibly anomalous lead and zinc values (241 and 406 ppm respectively) between 400W and 950W on line 4 may correlate with anomalous lead (515 ppm) and silver (2.3 ppm) values at 250W on line 6. These anomalies may indicate the existence of a

mineralized vein structure. Further soil sampling should be conducted in this area.

Stream sediment sampling results (Plates 2 - 4) are, in general, low. However, a single sample (KS-10) from a creek draining the southern part of the claims is high in silver (0.7 ppm) and lead (339 ppm) and probably reflects mineralization in this area.

## R E C O M M E N D A T I O N S

For the 1986 field season, a two-stage exploration program is recommended for the Ketza 73 to 100 claims.

### PHASE I

1. **Grid preparation.**  
Accurately picket grid: 22 kilometres
2. **Geochemistry.**  
Detailed soil sampling of grid to determine metal (Au, Ag, As, Pb, Cu, Zn) distribution: 440 samples
3. **Geophysics.**  
Airborne geophysical survey using EM and magnetometer methods.

### PHASE II

1. Contingent upon the success of Phase I, 10 km of ground geophysics (EM) and 600 metres of NQWL diamond drilling is recommended.

**ESTIMATED COST OF RECOMMENDED  
EXPLORATION PROGRAM**

**KETZA 73 TO 100 CLAIM GROUP**

**PHASE I**

**Program:** Grid preparation  
Soil geochemistry  
Geophysical survey  
Geological mapping

**Time Period:** Two weeks

**Personnel:** Geologist  
Two linecutters  
Two samplers  
Two geophysicists  
Cook

**COSTS**

Salaries . . . . .	\$ 8,750
Administrative and management fees . . . . .	6,125
Assays and analyses . . . . .	5,700
Field support . . . . .	2,000
Geophysical surveys:	
Airborne EM and MAG - 31 km @ \$175/km . . . . .	5,425
Grid preparation and sampling . . . . .	6,400
Bulldozer Rental - 20 hrs @ \$80/hr . . . . .	<u>1,600</u>
<b>Total Phase I . . . . .</b>	<b>\$ 36,000</b>

**PHASE II**

A program of ground geophysics followed by 600 metres of diamond drilling is recommended to test the best geochemical/-geophysical anomalies and known mineralization.

**Estimated Cost of Phase II . . . . . \$106,000**

**TOTAL ESTIMATED COST  
OF PHASE I AND II . . . . . \$142,000**

Respectfully submitted,

**AMERLIN EXPLORATION SERVICES LTD.**

*Carl G. Verley.*

**Carl G. Verley, F.G.A.C.**

Vancouver, B.C.

December, 1985

**R E F E R E N C E S**

Templeman-Kluit, D.J. and R.I. Thompson, 1985: Tectonics of  
The Canadian Cordillera, Geological Association of  
Canada short course number 5.

Templeman-Kluit, D.J., 1977: Geology of the Quiet Lake map  
area, Geological Survey of Canada Open File 486.

**APPENDIX A**  
**ANALYTICAL DATA**

## ASSAY AND ANALYTICAL DATA

### ROCK SAMPLE DESCRIPTIONS

<b>Sample</b>	<b>Description</b>	<b>Reference</b>
L1 to L3 series	Soil samples	Plates 5 to 7
L4 to L6 series	Soil samples	Plates 8 to 10
KS-1 to 11	Stream silts	Plates 2 to 4
KR-1	Chips of pyritic, quartz-siderite vein zone, approximately 1.5 m wide	"
KR-2	Chips of limonitic quartz-siderite vein rubble from old trench	"
7551	Chips of galena-bearing vein float from trench	"
7558	Selected chips of galena from dump at Stump mine	"

AL.IE ANALYTICAL LABORATORIES LTD.  
 352 E.HASTINGS ST.VANCOUVER B.C. V6A 1R6  
 PHONE 253-3158 DATA LINE 251-1011

DATE RECEIVED: AUG 8 1985

DATE REPORT MAILED:

*Aug 15/85*

**GEOCHEMICAL ICP ANALYSIS**

100 GRAM SAMPLE IS DIGESTED WITH 3ML 3-1-2 HCL-HNO3-H2O AT 95 DEG. C FOR ONE HOUR AND IS DILUTED TO 10 ML WITH WATER.  
 IS LEACH IS PARTIAL FOR MN.FE.CA.P.CR.MG.BA.TI.B.AL.NA.K.W.SI.ZR.CE.SN.Y.NB AND TA. AU DETECTION LIMIT BY ICP IS 3 PPM.  
 - SAMPLE TYPE: P1-SOILS P9-SILTS -80 MESH AU\*\* ANALYSIS BY FA+AA FROM 10 GRAM SAMPLE.

ASSAYER: *P10 - Soils P11 - Rocks* *J. Saundry* DEAN TOYE OR TOM SAUNDRY. CERTIFIED B.C. ASSAYER

AMERLIN EXPLORATION PROJECT - KETZA FILE # 85-1785 PAGE 1

SAMPLE#	Cu PPM	Pb PPM	Zn PPM	Ag PPM	As PPM	Au** PPB
L1-400W	20	22	65	.3	4	1
L1-375W	31	17	61	.4	3	2
L1-350W	16	20	57	.2	8	2
L1-325W	20	27	73	.3	4	1
L1-300W	8	6	23	.5	2	1
L1-275W	20	7	70	.2	2	1
L1-250W	17	8	68	.3	3	1
L1-225W	24	17	77	.3	7	2
L1-200W	24	18	67	.2	4	1
L1-175W	17	10	75	.4	5	2
L1-150W	25	16	62	.2	5	1
L1-125W	7	3	8	.1	2	2
L1-100W	8	4	23	.3	3	2
L1-75W	24	15	61	.4	8	1
L1-50W	35	58	117	.3	7	1
L1-25W	28	17	66	.3	7	1
L1-BL	16	15	59	.2	4	1
L1-25E	16	14	71	.2	4	3
L1-50E	19	9	43	.3	3	2
L1-75E	20	17	41	.2	2	3
L1-100E	19	55	65	.5	6	1
L1-125E	1	4	6	.1	2	1
L1-150E	12	8	38	.3	3	1
L1-175E	16	11	44	.3	2	2
L1-200E	15	21	65	.2	3	5
L1-225E	17	28	80	.4	2	2
L1-250E	20	9	62	.3	3	2
L1-275E	8	5	27	.4	2	2
L1-300E	7	14	82	.1	2	1
L1-325E	20	21	72	.1	5	1
L1-350E	16	34	68	.1	93	2
L1-375E	4	5	27	.1	2	1
L1-400E	15	20	69	.1	4	2
L2-400W	22	15	79	.1	9	2
L2-375W	20	15	66	.1	10	1
L2-350W	16	13	52	.1	5	1
STD C/FA AU	60	40	131	6.9	40	48

SAMPLE#	Cu PPM	Pb PPM	Zn PPM	Ag PPM	As PPM	Au** PPB
L2-325W	4	2	14	.1	2	1
L2-300W	16	18	69	.1	9	2
L2-275W	16	17	159	.1	7	2
L2-250W	12	13	55	.1	4	1
L2-225W	16	11	49	.1	4	1
L2-200W	13	9	32	.1	3	1
L2-175W	17	9	141	.1	4	1
L2-150W	19	27	120	.2	15	1
L2-125W	8	20	63	.1	5	1
L2-100W	15	21	66	.1	10	2
L2-75W	28	27	77	.1	14	1
L2-50W	16	17	62	.2	3	1
L2-BL	18	7	49	.2	4	1
L2-25E	15	16	75	.2	5	2
L2-50E	8	8	29	.1	4	1
L2-75E	18	11	39	.1	5	1
L2-100E	12	9	36	.1	2	1
L2-125E	16	15	42	.1	3	1
L2-150E	19	50	67	.2	7	2
L2-175E	6	5	33	.3	2	1
L2-200E	4	2	24	.3	2	1
L2-225E	15	21	80	.2	4	2
L2-250E	13	17	97	.2	3	2
L2-275E	17	6	51	.2	5	1
L2-300E	16	30	110	.2	3	1
L2-325E	17	36	76	.2	4	2
L2-350E	18	16	45	.1	2	1
L2-375E	16	11	62	.1	2	1
L2-400E	16	11	142	.2	3	2
L3-400W	20	13	33	.2	7	1
L3-375W	8	5	16	.2	2	1
L3-350W	15	19	67	.1	17	1
L3-325W	24	20	60	.1	18	1
L3-300W	24	20	38	.2	13	2
L3-275W	8	9	13	.3	2	1
L3-250W	8	10	18	.2	2	2
STD C/FA AU	60	41	138	7.0	36	48

SAMPLE#	Cu PPM	Pb PPM	Zn PPM	Ag PPM	As PPM	Au** PPB
L3-225W	16	25	96	.1	6	1
L3-200W	11	4	27	.1	2	2
L3-175W	8	2	21	.1	2	1
L3-150W	13	4	57	.1	2	1
L3-125W	21	9	40	.2	5	2
L3-100W	14	3	68	.1	2	1
L3-75W	12	3	38	.1	2	1
L3-50W	15	2	39	.1	2	1
L3-25W	13	15	72	.2	3	1
L3-BL	4	2	9	.1	2	1
L3-25E	19	21	64	.2	5	2
L3-50E	13	17	41	.1	3	1
L3-75E	15	7	39	.1	5	1
L3-100E	14	9	40	.1	7	1
L3-125E	17	22	79	.2	10	2
L3-150E	16	23	81	.1	2	1
L3-175E	16	15	45	.2	3	1
L3-200E	16	50	201	.1	2	1
L3-225E	17	48	68	.2	4	1
L3-250E	4	16	16	.1	2	2
L3-275E	17	18	55	.1	8	1
L3-300E	24	7	57	.1	3	1
L3-325E	16	18	61	.2	5	2
L3-350E	16	23	109	.1	5	2
L3-375E	15	23	77	.2	3	1
L3-400E	16	2	16	.1	2	1
L4-600W	55	59	190	.2	9	1
L4-575W	31	29	126	.2	4	2
L4-550W	25	7	58	.3	28	1
L4-525W	28	27	71	.3	29	1
L4-500W	35	21	59	.3	15	1
L4-475W	14	93	240	.5	6	1
L4-450W	30	141	175	1.8	13	2
L4-425W	30	241	213	2.9	16	1
L4-400W	24	112	406	1.3	7	1
L4-375W	28	37	117	.4	11	2
STD C/FA AU	57	39	137	6.9	39	48

SAMPLE#	Cu PPM	Pb PPM	Zn PPM	Ag PPM	As PPM	Au** PPB
L4-350W	41	23	119	.1	11	2
L4-325W	39	121	326	.6	14	3
L4-300W	37	22	119	.1	12	1
L4-275W	37	65	185	.2	9	1
L4-250W	40	138	331	.6	20	3
L4-225W	28	75	519	.4	15	2
L4-200W	33	93	421	.5	16	1
L4-175W	32	79	178	.4	18	1
L4-150W	20	31	35	.4	25	1
L4-125W	24	84	191	.2	26	1
L4-100W	14	36	169	.1	15	1
L4-75W	15	20	101	.1	35	1
L4-50W	36	13	45	.2	57	2
L4-25W	16	26	77	.2	86	1
L4-BL	9	2	14	.1	4	2
L5-600W	24	18	63	.1	15	1
L5-575W	43	26	114	.2	10	1
L5-550W	27	3	19	.1	6	2
L5-525W	24	4	62	.1	5	1
L5-500W	40	23	94	.1	6	3
L5-475W	36	37	130	.1	12	2
L5-450W	21	88	254	.2	9	2
L5-425W	24	11	58	.1	8	1
L5-400W	35	99	281	.4	10	2
L5-375W	31	19	92	.1	5	3
L5-350W	40	25	155	.1	24	1
L5-325W	42	29	123	.2	19	1
L5-300W	41	59	171	.2	13	2
L5-275W	31	16	73	.2	39	2
L5-250W	38	24	21	.3	71	1
L5-225W	70	50	176	.3	32	2
L5-200W	41	14	59	.1	40	2
L5-175W	43	49	38	.2	58	1
L5-150W	39	14	65	.1	18	2
L5-125W	24	59	136	.1	38	2
L5-100W	20	30	94	.2	18	1
STD C/FA AU	59	41	132	7.0	40	52

SAMPLE#	Cu PPM	Pb PPM	Zn PPM	Ag PPM	As PPM	Au** PPB
L5-75W	39	183	277	.6	57	1
L5-50W	35	219	374	.8	30	2
L5-25W	16	75	127	.3	45	2
L5-BL	16	106	173	.2	37	1
L6-600W	39	52	147	.1	7	1
L6-575W	20	12	39	.1	5	1
L6-550W	15	34	188	.1	7	1
L6-525W	55	192	452	.6	14	1
L6-500W	14	27	122	.1	3	1
L6-475W	24	105	129	.1	9	1
L6-450W	24	49	78	.1	8	1
L6-425W	20	60	269	.5	7	1
L6-400W	38	47	124	.2	29	2
L6-375W	33	53	111	.1	196	1
L6-350W	32	68	160	.2	27	1
L6-325W	29	7	28	.1	24	1
L6-300W	47	21	44	.1	54	2
L6-275W	27	51	113	.1	28	1
L6-250W	38	515	148	2.3	94	3
L6-225W	23	29	54	.1	21	2
L6-200W	51	78	91	.3	133	2
L6-175W	42	64	71	.1	119	3
L6-150W	16	23	50	.2	23	1
L6-125W	28	87	173	.1	43	2
L6-100W	20	94	175	.2	45	2
L6-75W	64	166	368	.6	127	1
L6-50W	20	85	107	.5	53	1
L6-25W	25	107	235	.1	59	1
L6-BL	16	42	117	.1	57	1
STD C/FA AU	59	39	139	6.9	36	48

SAMPLE#	Cu PPM	Pb PPM	Zn PPM	Ag PPM	As PPM	Au** PPB
KS-1	27	374	106	1.5	22	1
KS-2	31	40	117	.2	9	1
KS-3	34	46	117	.2	14	2
KS-4	20	64	62	.3	5	2
KS-5	24	29	105	.2	8	1
KS-6	17	67	69	.2	11	6
KS-7	44	53	375	.3	13	1
KS-8	27	56	133	.2	12	2
KS-9	29	47	111	.4	21	1
KS-10	32	339	148	.7	13	4
KS-11	27	66	151	.2	9	1
KR-1	54	13	69	.3	21	19
KR-2	3	8	18	.1	6	2

ACME ANALYTICAL LABORATORIES LTD.  
851 E. HASTINGS ST. VANCOUVER B.C. V6A 1R6  
PHONE 253-3158 TELEX 04-53124

DATE RECEIVED: AUG 8 1985

DATE REPORT MAILED: .....

*Aug 15/85*

### ASSAY CERTIFICATE

1.00 GRAM SAMPLE IS DIGESTED WITH 50ML OF 3-1-2 OF HCL-HNO3-H2O AT 95 DEG. C FOR ONE HOUR.  
AND IS DILUTED TO 100ML WITH WATER. DETECTION FOR BASE METAL IS .01%.

- SAMPLE TYPE: ROCK CHIPS AU# 10 GRAM REGULAR ASSAY

ASSAYER: *T. Saundry* DEAN TOYE OR TOM SAUNDY. CERTIFIED B.C. ASSAYER

AMERLIN EXPLORATION PROJECT - KETZA FILE # 85-1785A PAGE 1

SAMPLE#	Cu %	Pb %	Zn %	As %	Ag OZ/T	Au OZ/T
7551	.14	25.10	.07	-	26.77	.001
7558	.21	57.70	.02	-	49.02	.030

**APPENDIX B**  
**STATUTORY DECLARATION**

STATUTORY DECLARATION

CANADA )  
 )  
 TO WIT: ) In the matter of a geological and geochemical report  
 ) on behalf of High River Resources Ltd. and Quillo  
 ) Resources Inc.

I, Carl G. Verley, agent for Amerlin Exploration Services Ltd.  
 of 422-470 Granville Street, Vancouver, B.C. V6C 1V5

do solemnly declare, - that geological mapping and geochemical sampling were  
 conducted on the KETZA 73 to 100 mineral claims (inclusive), Watson Lake  
 Mining District, Yukon, during the period July 9 to 29, 1985. Expenditures for  
 this work include:

Salaries, management fees, consulting . . . . .	\$2,795.00
Helicopter support . . . . .	401.52
Assay and analytical . . . . .	1,947.48
Field supplies . . . . .	99.71
Food . . . . .	88.88
Fuel . . . . .	43.81
Hotel . . . . .	47.00
Telephone . . . . .	13.07
Travel expense . . . . .	55.37
Vehicle rental . . . . .	640.00
Report preparation, drafting, photocopying and printing . . . . .	238.87
TOTAL	<u>\$6,370.71</u>

And I make this declaration conscientiously believing it to be  
 true and knowing that it is of the same force and effect as if made under  
 oath and by virtue of The Canada Evidence Act.

Declared before me at VANCOUVER )  
 )  
 in the Province of B.C. this )  
 )  
2nd day of OCTOBER 1985. )

Carl G. Verley

Corinne Syme  
 A Commissioner for Oaths for Yukon  
 Territory OR Notary Public for B.C.

*CS*

**APPENDIX C**  
**PERSONNEL**

P E R S O N N E L

Mr. C. G. Verley  
301 - 1867 West 3rd Avenue  
Vancouver, B.C. V6J 1K9

Geologist

Mr. Michael Woods  
5 Teak Avenue  
Whitehorse, Y.T. Y1A 4W5

Field Assistant

Mr. Keith Wark  
4362 Angus Drive  
Vancouver, B.C.

Field Assistant

**APPENDIX D**  
**WRITER'S CERTIFICATE**

# AMERLIN EXPLORATION SERVICES LTD.

422-470 Granville Street, Vancouver, B.C., Canada V6C 1V5

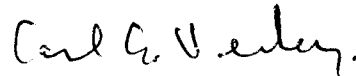
Phone (604) 689-1966

## WRITER'S CERTIFICATE

I, Carl G. Verley of Vancouver, British Columbia hereby certify that:

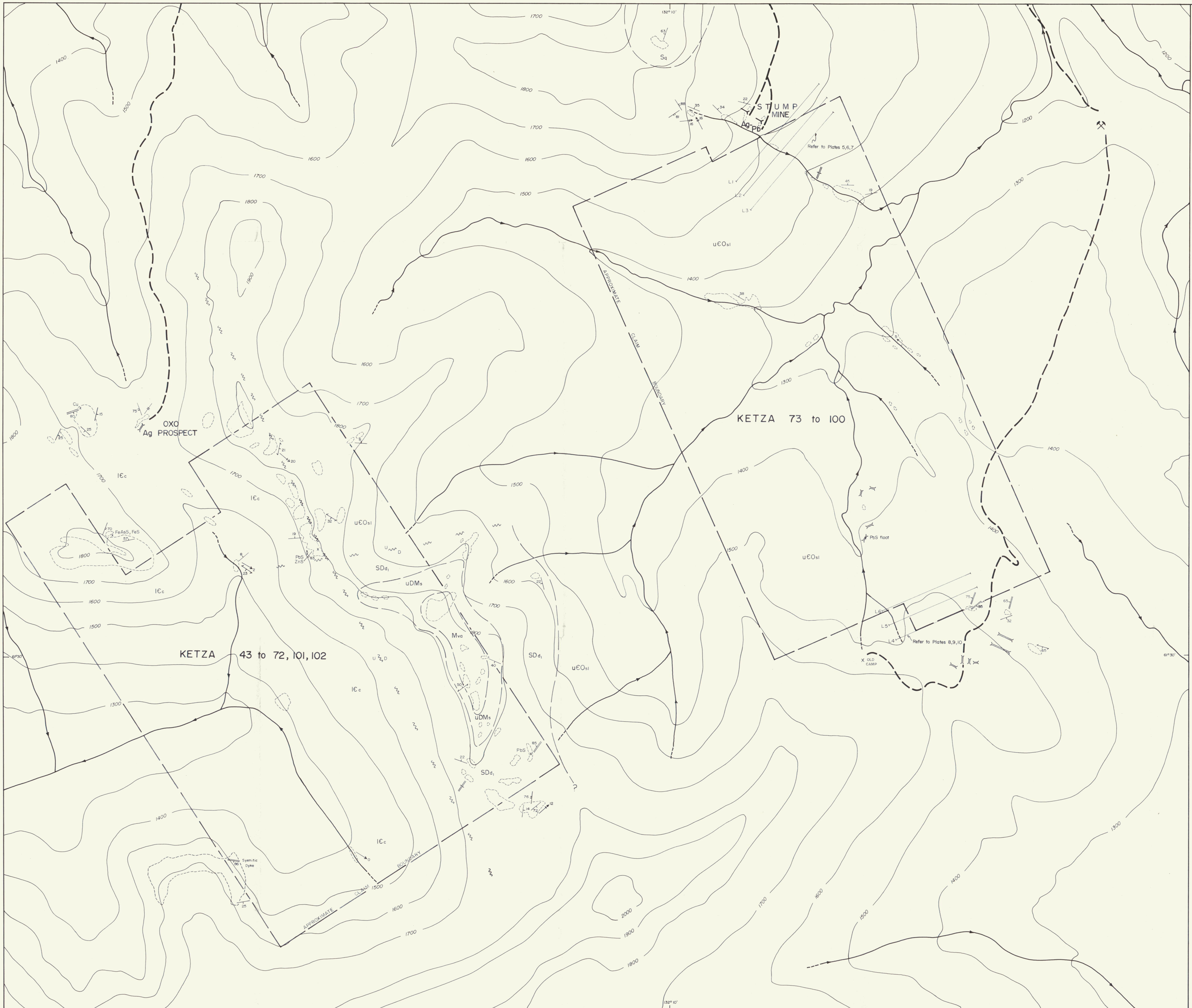
1. I am a geologist residing at 301 - 1867 West 3rd Avenue, Vancouver, B.C. and principal of Amerlin Exploration Services Ltd. 422 - 470 Granville Street, Vancouver, B.C. V6C 1V5.
2. I am a graduate of the University of British Columbia, B.Sc., in 1974. and have practised my profession since that time.
3. I am a Fellow of the Geological Association of Canada.
4. I am the author of this report which is based on work conducted by me on the KETZA 73 to 100 mineral claims during the period July 9 to 29. 1985.

Amerlin Exploration Services Ltd.



Carl G. Verley, F.G.A.C.

December 6, 1895.  
Vancouver, B.C.



**LEGEND**

- LITHOLOGIES**
- MISSISSIPPIAN**
- Mva volcanics
- UPPER DEVONIAN - MISSISSIPPIAN**
- uDMs shale
- SILURIAN - DEVONIAN**
- SDs carbonates
- SILURIAN**
- Sq quartzite
- UPPER CAMBRIAN - ORDOVICIAN**
- uEOs limestone, slate, v - volcanic component
- LOWER CAMBRIAN**
- ICc carbonates, ICs - shale component

**SYMBOLS**

- x FeS
  - FeAsS
  - ZnS
  - PbS
- mineral occurrences: pyrrhotite, arsenopyrite, sphalerite, galena
- outcrop distribution
  - lithologic contact: defined, inferred
  - ▬ bedding
  - ▬ cleavage
  - ▬ jointing
  - ▬ vein
  - ▬ fold axis to minor fold
  - ▬ lineation
  - ▬ fault: definite, inferred - with sense of movement (up/down)
  - ▬ adit
  - ▬ trench
  - ▬ road

Note: - Geology outside of claim blocks adapted from SSC Open File 485  
 - Topography from Dept. of Energy, Mines and Resources - 1:50,000 scale map (105F/9) and 1:250,000 scale map (105F)  
 - Contour interval: 100 metres  
 - Magnetic declination: 31.9° (July, 1985)

**QUILLO RESOURCES INC.**  
**HIGH RIVER RESOURCES LTD.**  
**KETZA 43-102 CLAIMS**

**GEOLOGY**

KETZA RIVER AREA 105 F-8,9  
 WATSON LAKE MINING DIVISION, YUKON

Scale in metres

1 : 10,000



by

**AMERLIN EXPLORATION SERVICES LTD. 091686**  
 422 - 470 Granville Street, Vancouver, B.C. V6C 1V5



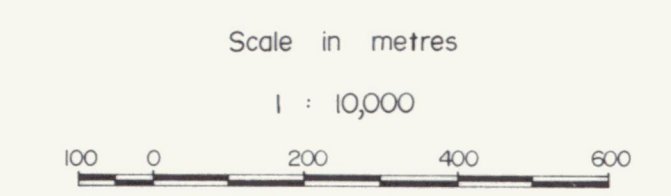
**EXPLANATION**

- Sample Site**
- 2.0 Talus fines, Au, Ag
  - × 5.2 Rock: <sup>KR-19</sup> (geochemical analysis) Au, Ag  
7551 (assay)
  - 2.0 Stream silt, Au, Ag

- Values**
- Analysis: Au in ppb, Ag in ppm  
Assays: Au, Ag in oz/ton
- Background\*
  - Possibly anomalous\*
  - Anomalous\*
- \*refer to text for ranges of categories

Note 1 - Refer to Plate 1 for geology legend.

QUILLO RESOURCES INC.  
HIGH RIVER RESOURCES LTD.  
KETZA 43-102 CLAIMS  
Au, Ag GEOCHEMISTRY  
KETZA RIVER AREA 105 F-8,9  
WATSON LAKE MINING DIVISION, YUKON



by  
AMERLIN EXPLORATION SERVICES LTD. 091686  
422 - 470 Granville Street, Vancouver, B.C. V6C 1V5



**EXPLANATION**

- Sample Site**
- 29, 49 Talus fines, As, Cu
  - × 95, 14 Rock:  $\frac{KT-19}{7551}$  (geochemical analysis) (assay) As, Cu
  - 8, 27 Stream silt, As, Cu

- Values**
- Analysis: As, Cu in ppm
  - Assays: As, Cu in %
  - Background\*
  - Possibly anomalous\*
  - Anomalous\*
- \*refer to text for ranges of categories

Note 1 - Refer to Plate 1 for geology legend.

QUILLO RESOURCES INC.  
 HIGH RIVER RESOURCES LTD.  
 KETZA 43-102 CLAIMS  
 As, Cu GEOCHEMISTRY  
 KETZA RIVER AREA 105 F-8,9  
 WATSON LAKE MINING DIVISION, YUKON

Scale in metres  
 1 : 10,000  
 100 0 200 400 600

by  
 AMERLIN EXPLORATION SERVICES LTD.  
 422 - 470 Granville Street, Vancouver, B.C. V6C 1V5. 091686



**EXPLANATION**

- Sample Site**
- 477 Talus fines, Pb, Zn
  - × 76, 29 Rock: KR-19 (geochemical analysis) Pb, Zn (assay)
  - 56, 133 Stream silt, Pb, Zn
- Values**
- Analysis: Pb, Zn in ppm  
Assays: Pb, Zn in %
- Background\*
  - Possibly anomalous\*
  - Anomalous\*
- \*refer to text for ranges of categories
- Note: - Refer to Plate I for geology legend.

QUILLO RESOURCES INC.  
HIGH RIVER RESOURCES LTD.  
KETZÁ 43-102 CLAIMS

**Pb, Zn GEOCHEMISTRY**

KETZÁ RIVER AREA 105 F-8,9  
WATSON LAKE MINING DIVISION, YUKON

Scale in metres  
1 : 10,000

by  
AMERLIN EXPLORATION SERVICES LTD.  
422 - 470 Granville Street, Vancouver, B.C. V6C 1V5 **091686**

OCTOBER, 1985 PLATE 4



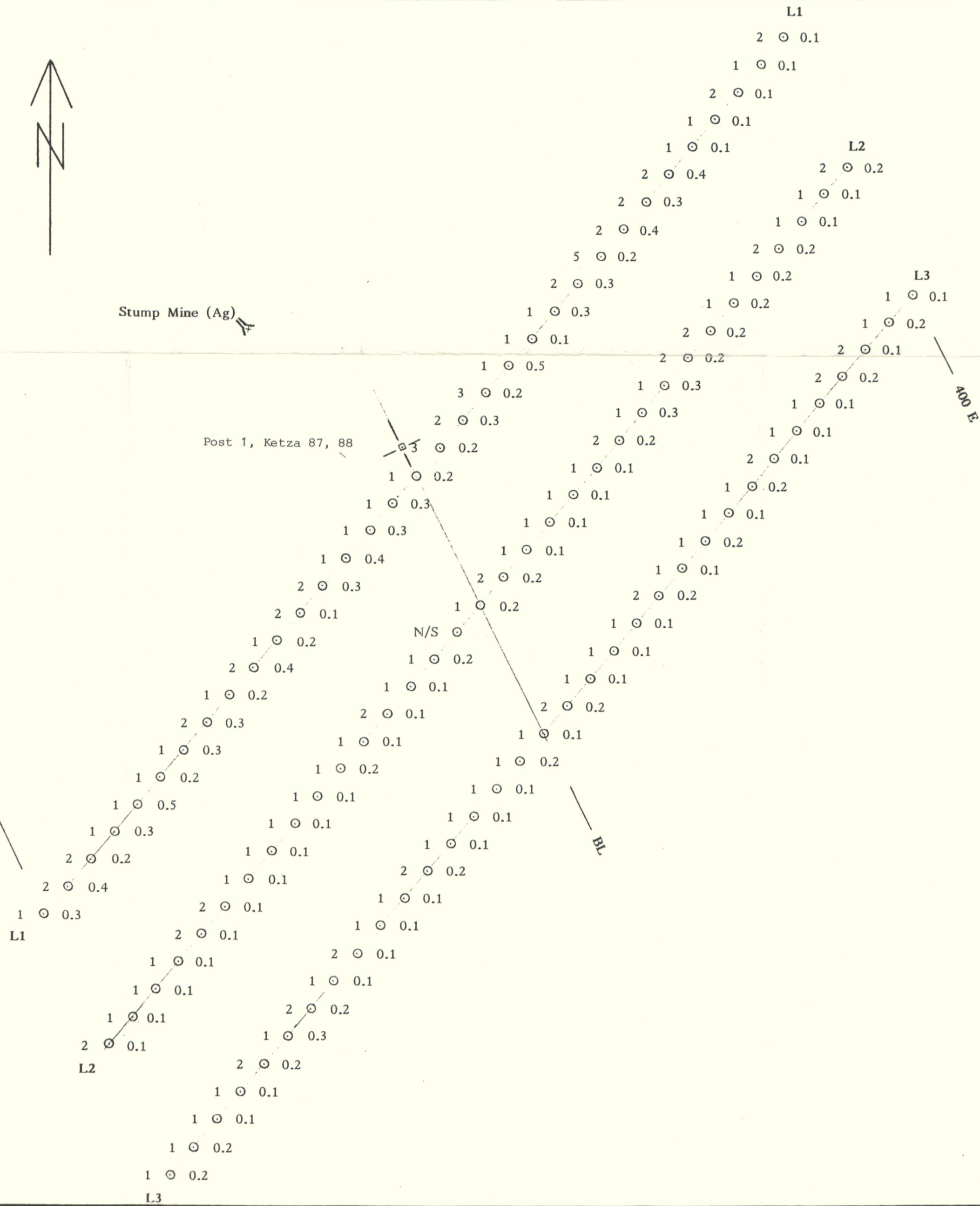
Stump Mine (Ag)

Post 1, Ketz 87, 88

400 W

BL

400 E



EXPLANATION

Sample site

2 ⊙ 0.1 Soil sample: Au, Ag in ppb, ppm

N/S No sample

Sample interval: 25 metres.

Background

Possibly anomalous

Anomalous\*

\*refer to text for ranges of categories.

Note: - see Plate 1 for location of this plate with respect to geology and topography.

QUILLO RESOURCES INC.  
HIGH RIVER RESOURCES LTD.  
KETZA 73-100 CLAIMS  
Au, Ag SOIL GEOCHEMISTRY L1 - L3

KETZA RIVER AREA 105 F-8,9  
WATSON LAKE MINING DIVISION, YUKON

Scale in metres  
1:2500



by

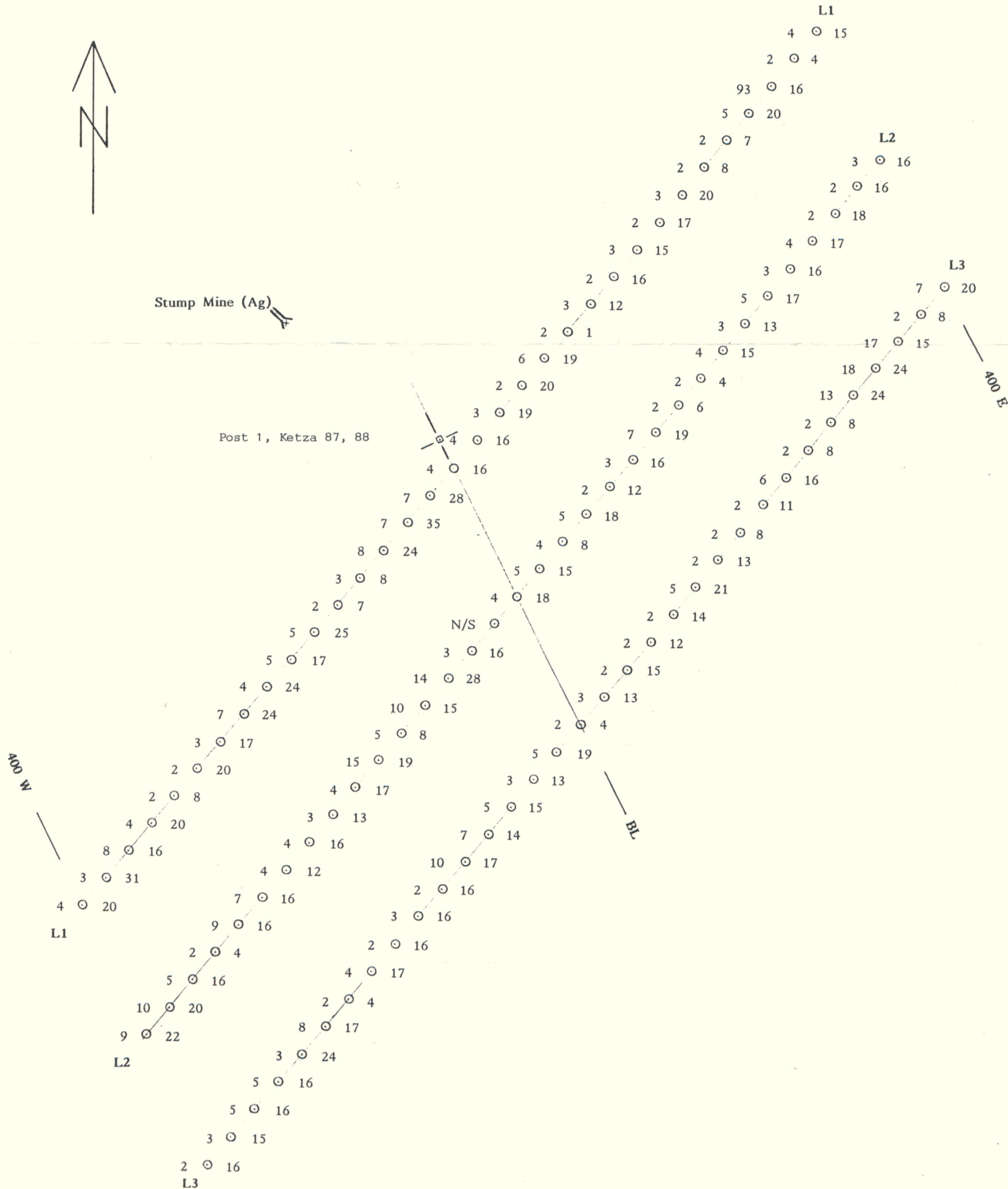
AMERLIN EXPLORATION SERVICES LTD.  
422 - 470 Granville Street, Vancouver, B.C. V6C 1V5

091686



Stump Mine (Ag)

Post 1, Ketz 87, 88



EXPLANATION

Sample site  
 7 @ 24 Soil sample: As, Cu in ppm

N/S No sample

Sample interval: 25 metres

- Background
- Possibly anomalous
- Anomalous\*

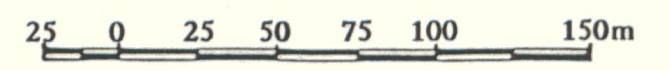
\*refer to text for ranges of categories.

Note: - see Plate 1 for location of this plate with respect to geology and topography.

QUILLO RESOURCES INC.  
 HIGH RIVER RESOURCES LTD.  
 KETZA 73-100 CLAIMS  
 As, Cu SOIL GEOCHEMISTRY L1 - L3

KETZA RIVER AREA 105 F-8,9  
 WATSON LAKE MINING DIVISION, YUKON

Scale in metres  
 1:2500

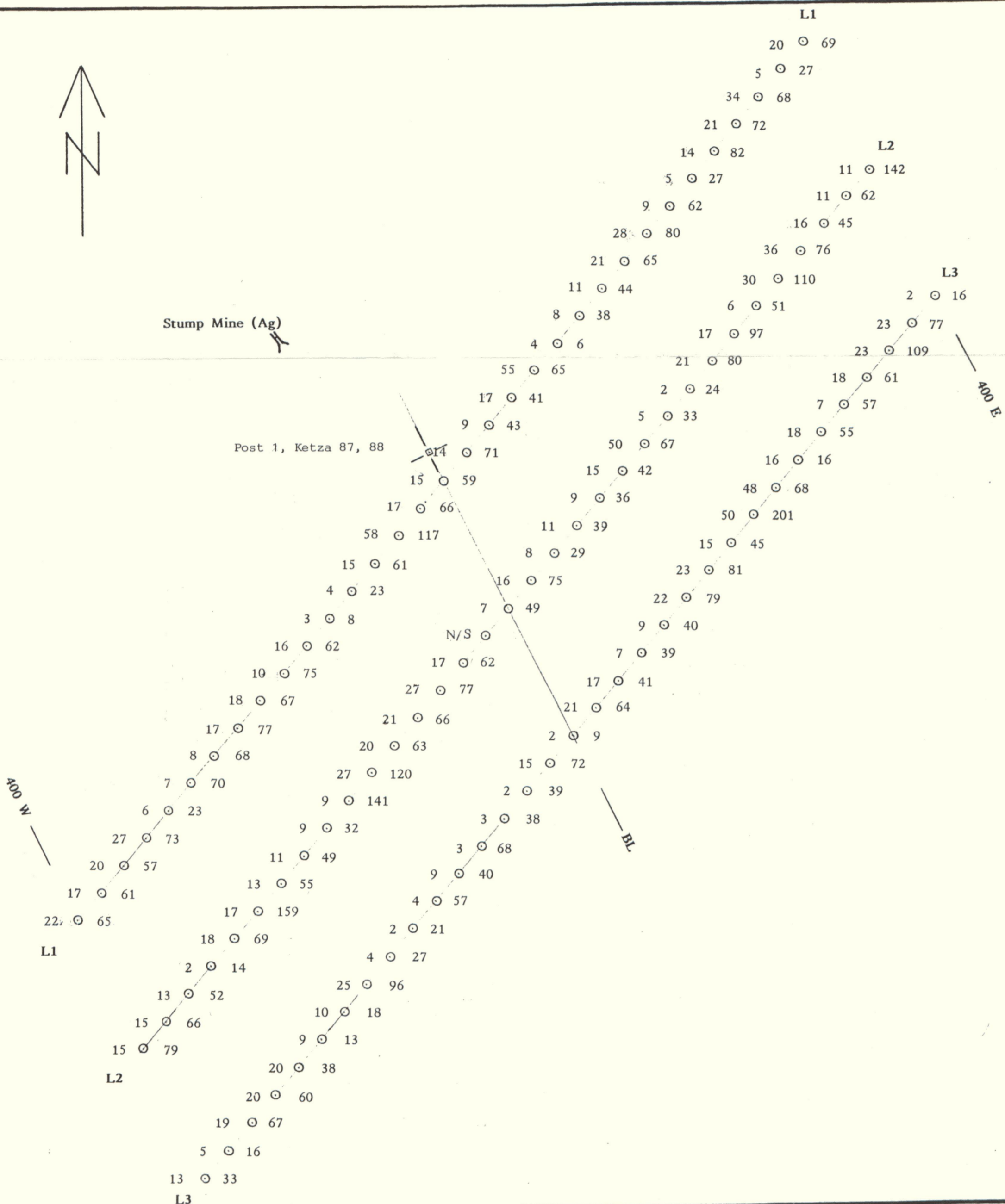


by  
 AMERLIN EXPLORATION SERVICES LTD.  
 422 - 470 Granville Street, Vancouver, B.C. V6C 1V5



Stump Mine (Ag)

Post 1, Ketzá 87, 88



EXPLANATION

Sample site

19 ○ 127 Soil sample: Pb, Zn in ppm

N/S No sample  
Sample interval: 25 metres

□ Background

□ Possibly anomalous

□ Anomalous\*

\*refer to text for ranges of categories.

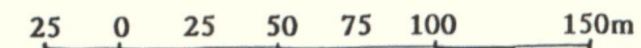
Note: - see Plate 1 for location of this plate with respect to geology and topography.

QUILLO RESOURCES INC.  
HIGH RIVER RESOURCES LTD.  
KETZA 73-100 CLAIMS

Pb, Zn SOIL GEOCHEMISTRY L1 - L3

KETZA RIVER AREA 105 F-8,9  
WATSON LAKE MINING DIVISION, YUKON

Scale in metres  
1:2500



by

AMERLIN EXPLORATION SERVICES LTD.

422 - 470 Granville Street, Vancouver, B.C. V6C 1V5

091686

PLATE 7.

**EXPLANATION**

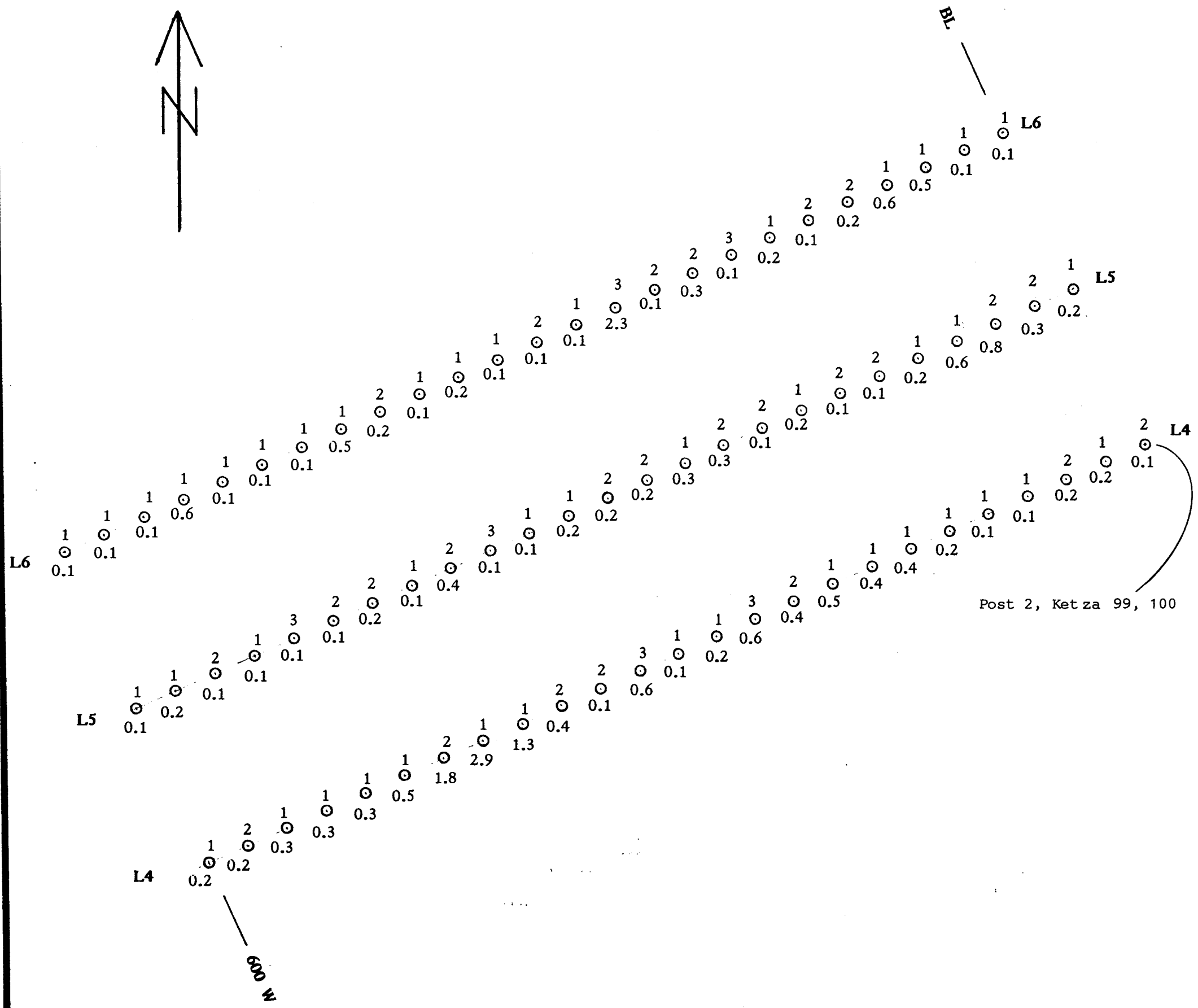
Sample site  
 2 Au in ppb  
 0.3 Soil sample: Ag in ppm  
 N/S No sample

Sample interval: 25 metres.

- Background
- Possibly anomalous
- Anomalous\*

\*refer to text for ranges of categories.

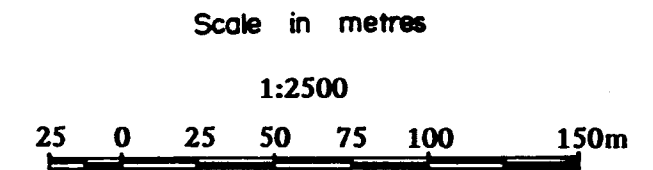
Note: - see Plate 1 for location of this plate with respect to geology and topography.



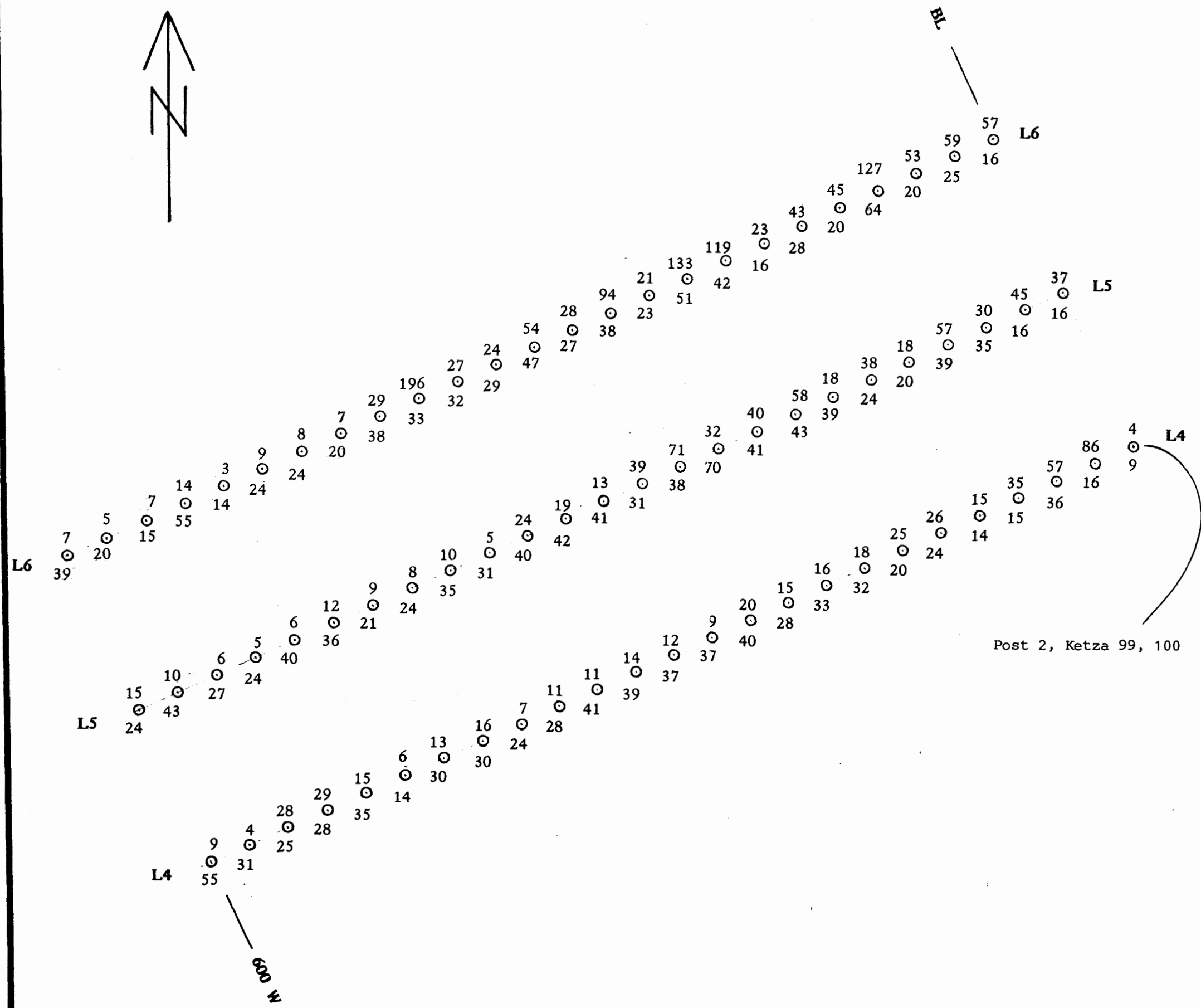
**QUILLO RESOURCES INC.**  
**HIGH RIVER RESOURCES LTD.**  
**KETZA 73-100 CLAIMS**

**Au, Ag SOIL GEOCHEMISTRY L4 - L6**

KETZA RIVER AREA 105 F-8,9  
 WATSON LAKE MINING DIVISION, YUKON



by  
**AMERLIN EXPLORATION SERVICES LTD.**  
 422 - 470 Granville Street, Vancouver, B.C. V6C 1V5



**EXPLANATION**

Sample site  
 12                    As in ppm  
 65                    Soil sample:        Cu in ppm  
 N/S                    No sample

Sample interval: 25 metres.

- Background
- Possibly anomalous
- Anomalous\*

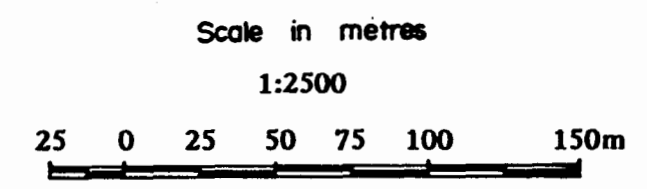
\*refer to text for ranges of categories.

Note: - see Plate 1 for location of this plate with respect to geology and topography.

**QUILLO RESOURCES INC.  
 HIGH RIVER RESOURCES LTD.  
 KETZA 73-100 CLAIMS**

As, Cu SOIL GEOCHEMISTRY L4 - L6

KETZA RIVER AREA 105 F-8,9  
 WATSON LAKE MINING DIVISION, YUKON



by  
**AMERLIN EXPLORATION SERVICES LTD.**  
 422 - 470 Granville Street, Vancouver, B.C. V6C 1V5

