

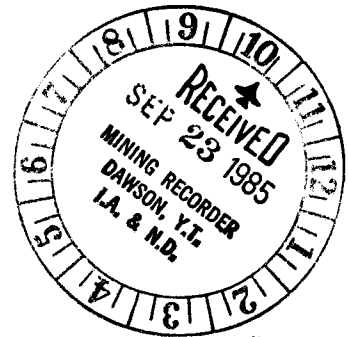
OF 1984 EXPLORATION

On The

LONE STAR PROPERTY

of

DAWSON ELDORADO MINES LTD.



Lat. 63°54' N; Long. 139°14' W

NTS 115 O 14

Paul S. White, B.A. Sc., P.Eng (Mining)

September 16, 1985

RE SUBMITTED 2 DEC. 1985.

091683

This report has been examined by
the Geological Evaluation Unit
under Section 53 (4) Yukon Quartz
Mining Act and is allowed as
representation work in the amount
of \$ 12,750.00.

D. D. Emmond

for Regional Manager, Exploration and
Geological Services for Commissioner
of Yukon Territory.

1980-1981

TABLE OF ILLUSTRATIONS

<u>Figure</u>		<u>Page</u>
1	Claim Location Map	3A
2	1984 Grid Area	11A
3	1984 Plan of Geology	11B
4	1985 Plan of Geology	Envelope
5	Revised Agreement Area	Envelope
6	Gold Soil Value Plan	Envelope

Appendices

- A) Sketches of Sampling of Workings
- B) Chemex Labs Ltd. Assay Returns
- C) Invoices of Portion of Program
- D) Certificate of Expenditures

REPORT ON EXPLORATION
PERFORMED ON THE LONE STAR PROPERTY
DAWSON MINING DISTRICT
YUKON TERRITORY
1984

INTRODUCTION

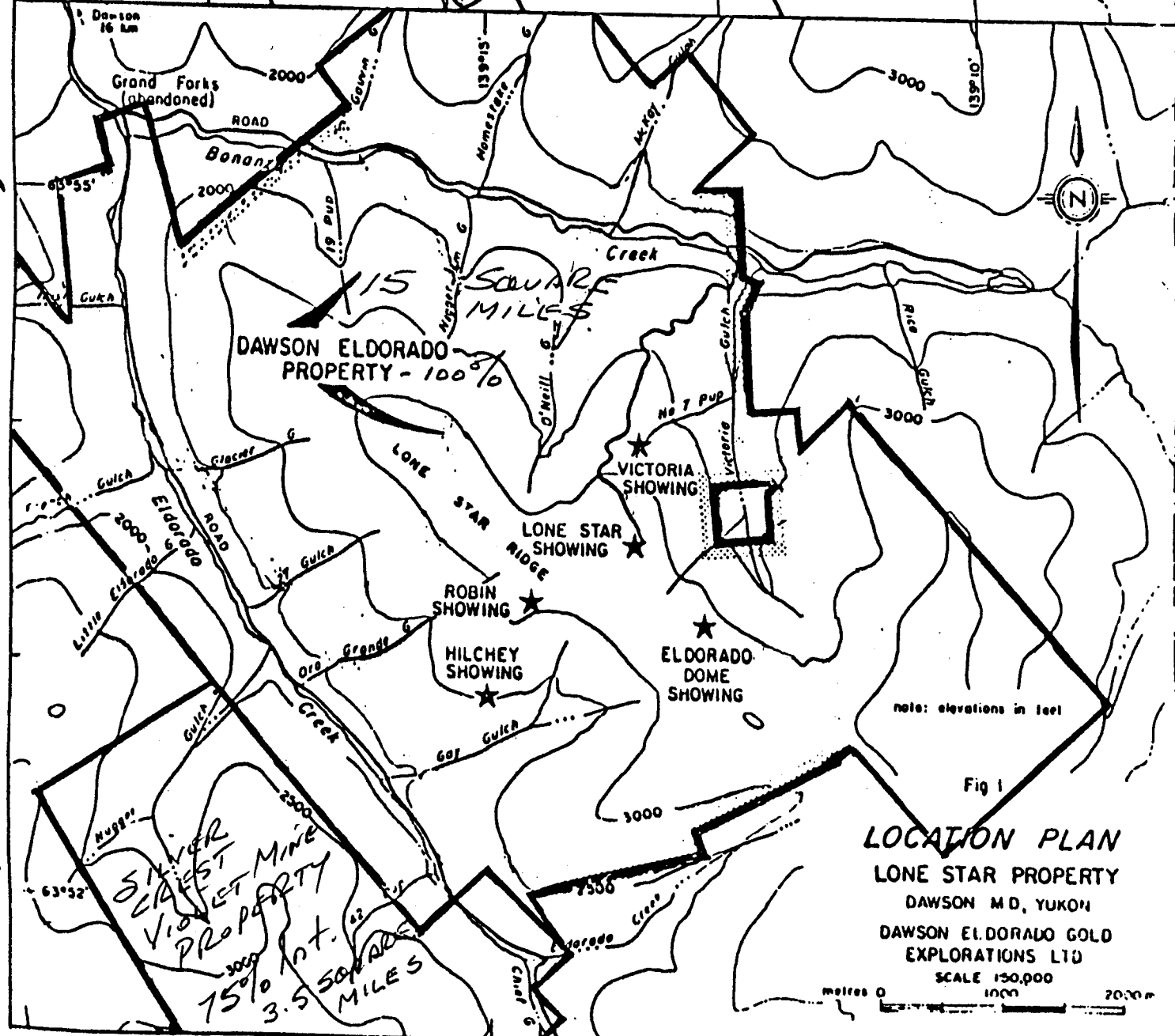
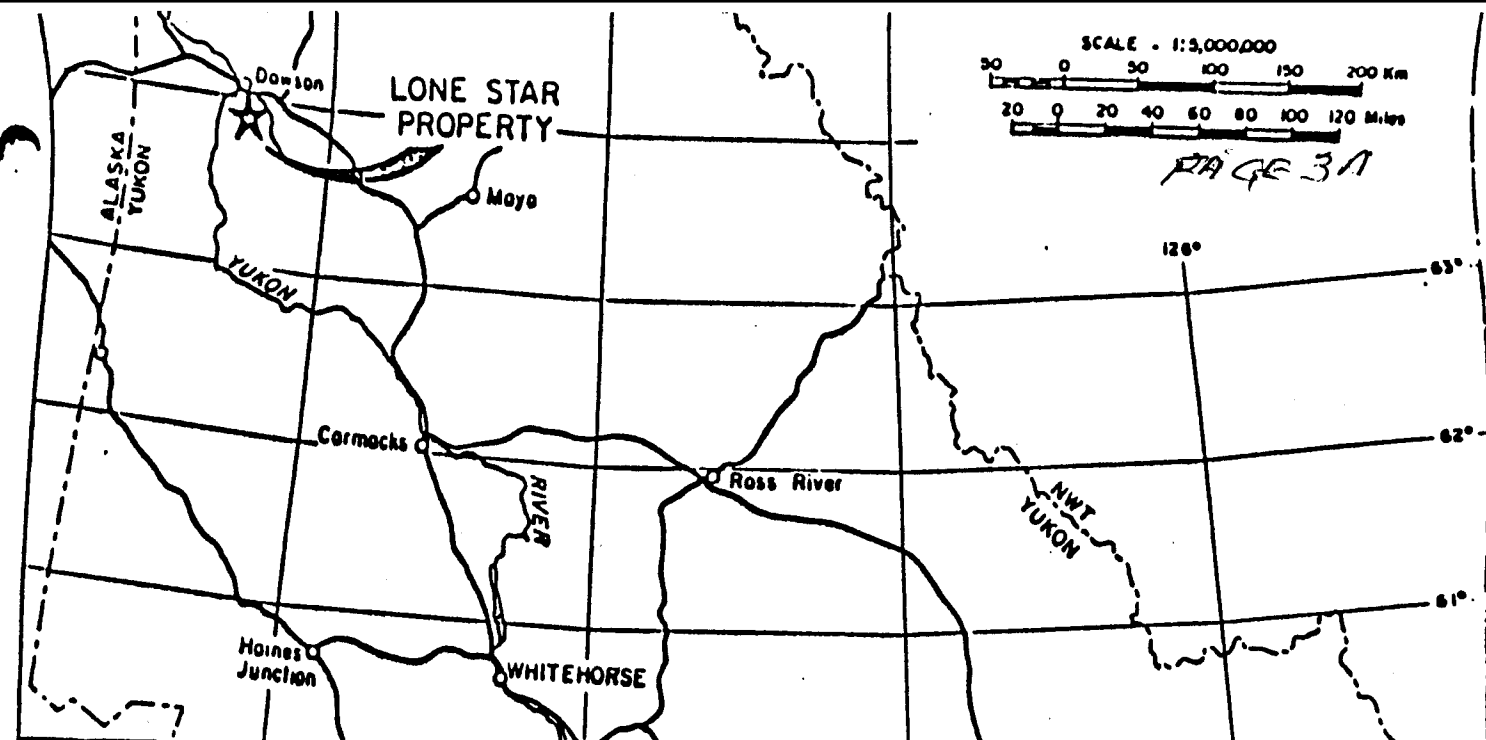
Dawson Eldorado Mines Ltd. acquired 9 (nine) Crown granted mineral claims from F. Caley of Dawson City, Y.T., in 1979. The Crown grants are the core of the Lone Star mine property, which was mined in 1912 - 1914 period. The property is located on a ridge between the forks of Eldorado and Upper Bonanza Creeks and was the subject of at least five gold-quartz mining developments over the eighty years since discovery in 1897.

In 1980, line cutting and geophysical surveys were carried out over the Crown grants, and the geophysical work (resistivity and electromagnetic) was performed to map the old mine workings and indicate possible extensions. The survey met with limited success, indicating shallow drill targets of uncertain reliability, but encouraged the Company to proceed with a \$250,000+ exploration program in 1981, based on the recommendations of the Company's consultants, Archer, Cathro & Associates Ltd.

The Company acquired by staking 58 mineral claims in 1981 and 52 in 1983. In 1983, two Crown Grants and 59 mineral claims were purchased from Klondike Ken Ventures Inc., after holding them under option for 2 years. A total of 44 mineral claims were also purchased in the same year. In 1984 other 51 mineral claims were acquired by staking. In May 1985 a 75% interest in 300 mineral claims, located elsewhere in the Klondike District, was transferred to the Company from Archer, Cathro & Associates Ltd. The area covered by the Company's holdings is approximately 22 square miles, centred at Lat. $63^{\circ}54'N$ and Long. $139^{\circ}14'W$, NTS 115 0 14. The writer made a report in 1982 covering the work performed between April 1 and October 31, 1981. The work was performed by the Company personnel and contractors under the direction of R. J. Cathro, P.Eng, and under the supervision of P.S. White, P.Eng, on a day-to-day basis. This report covers the work performed commencing in May 1984 and completed in January 1985, with the compilation of data.

SCALE - 1:5,000,000
 0 50 100 150 200 Km
 0 20 40 60 80 100 120 Miles

PAGE 31



SILVER STREET MINE
 75% int.
 3.5 SQUARE MILES

PROPERTY

The Lone Star comprises the following claims:

<u>LOT No.</u>	<u>CLAIM NAME</u>	<u>LOT No.</u>	<u>CLAIM NAME</u>
86	Victoria	424	New Bonanza No. 2
106	Esther Edna	533	Swastika
408	New Bonanza	534	Udad
409	Niobe Fraction	535	Cato
410	Lone Star	536	Thistle
411	Zulu Chief		

The Crown grants can be held indefinitely by paying \$100/grant per year in taxes to the Government of the Yukon Territory.

<u>MINERAL CLAIMS</u>	<u>GRANT No.</u>	<u>MINERAL CLAIMS</u>	<u>GRANT No.</u>
DE 1-14	YA 55250-263	RJ 1-32	YA 64216-247
AC 1-12	YA 64270-281	AC 12-35	YA 65627-650
RJ 39-60	YA 65595-616	RJ 62-63	YA 65618-619
RJ 65-70	YA 65621-626	RON 1-40	YA 10300-39
CIM 1-4	YA 64519-522	REX 1-51	YA 84183-233
DN 11-26	YA 32946-61	DN 32-33	YA 47604-05
DN 1-2	YA 32783-84	DN 1F-2F	YA 47090-91

<u>MINERAL CLAIMS</u>	<u>GRANT No.</u>	<u>MINERAL CLAIMS</u>	<u>GRANT No.</u>
DN 3	YA 47890	ND 1-22	YA 49724-45
DN 8	YA 47895	DN 4-7	YA 47891-94
DN 9	YA 47896	DN 10	YA 47082
DN 27-31	YA 47083-87	DN F	YA 47088
ND F	YA 47089		

In addition to the above, various placer claims and prospecting leases were staked over the property to protect against nuisance staking in 1981. These placer rights were not considered essential to the Company and were permitted to lapse.

LOCATION AND ACCESS

The Dawson Eldorado property occurs on the Lone Star Ridge between Bonanza and Eldorado Creeks in the Klondike placer gold District. It is situated at 63°54'N Latitude and 139°14'W Longitude, within NTS map area 115 0 14, and is accessible by a 32 Km road from Dawson via Eldorado Creek, and also by a seasonal road from Upper Bonanza Creek.

The topography of the property is dominated by a gently rounded flat-topped ridge ranging in elevation between 860 and 1000 m, trending N55°W and partially dissected by various creek tributaries down to elevations of 450 -600 m, giving relief of 400± (1250±).

HISTORY

The colorful 80 year history of the property is well described in published reports. The Lone Star mine is the only lode gold occurrence in the Klondike Gold Fields to produce a substantial amount of gold. The following activities are known to have occurred in the property:

- 1897 Discovery by prospecting placer miners working upslope from the rich placer creeks.
- 1898 - 1908 Prospecting and pitting staking into claims.
- 1909 - 1914 Development and Production by Lone Star Ltd., averaging 0.15 - 0.20 oz./ton Au, with small operating profit. Production halted by World War I. Mining by Eldorado Dome Quartz Mining Co. Ltd. nearby.
- 1929 - 1936 Exploration by Consolidated Lone Star Limited localized near old mine by severely restricted in funding.
- 1946 - 1947 Churn drilling and underground work localized near old mine site by Yukon Consolidated Gold Corporation Ltd. on option. Gold price and discouraging outlook for dredging operations caused option to be dropped.
- 1960 - 1962 Prospecting, bulldozer trenching and soil panning by Klondike Lode Gold Mines Ltd. Small shallow drill program gave poor recovery and inconclusive results.

Some high grade vein showings were sampled in the Gay and Oro Grande Gulch areas.

1962 Geological Survey of Canada determines that gold itself is best heavy metal indication for the property in a heavy mineral study in the District.

1979 - 1984 Dawson Eldorado Gold Explorations Ltd. formed to assemble property, and commence long-term technical program to determine gold sources and grades in search for mineable reserves. \$500,000 in exploration spent to date.

No comprehensive compilation of data, systematic sampling or mapping had been taken before 1979.

GEOLOGY AND MINERALIZATION

The following geological description of the property is taken from a report dated 15 June 1981 by R.J.Cathro, P.Eng.

"According to the Geological Survey of Canada, the ridge between Eldorado and Bonanza Creeks is mainly underlain by metasedimentary rocks, called Klondike Schist, of Upper Paleozoic age. Principal rock types are white to medium-green quartz-feldspar-sericite schists with micaceous quartzite interbeds and some chlorite and muscovite-rich layers. Quartz lenses and eyes are abundant in the Klondike schist.

In common with other parts of this district, the terrain consist of rounded, gentle hills with few rock outcrops. Bedrock is almost obscured by an extensive frozen blanket of overburden and partially decomposed vegetation. The geology is known mainly from old trenches and workings and, in spite of its long history, previous mapping on the property has been only cursory in nature. From the abundance of quartz in the overburden and creek gravels, quartz veins are thought to be much more numerous than mapped. Porphyry float also occurs at many widespread places on the property, suggesting that dykes or small stocks of Tertiary quartz-feldspar porphyry are more abundant than previously thought.

Prior to the Pleistocene glacial period, which began about two million years ago, the Klondike climate was somewhat warmer and wetter than the present and the district underwent a period lasting several million years during which erosion proceeded at a slow and steady rate. This resulted in relatively deep leaching by warm surface waters and the accumulation of bleached, clean, chemically mature gravels in wide river valleys. Known as the White Channel Gravel, it consists of up to 100 metres of white quartz, quartzite and quartz-muscovite-sericite schist with a clay matrix. The upper half is commonly yellowish to reddish. Placer gold concentrations in the White Channel gravels were subsequently reconcentrated by downcutting of the streams into their modern narrow channels within the broader valleys.

The Klondike District lies within the only small portion of Canada that escaped Pleistocene glaciation. In addition to protecting the placer gold deposits, this also preserved most of the zone of deep surface leaching on the hills.

Placer Gold

Following the Klondike gold discovery on Bonanza Creek in August 1986, prospectors soon traced the gold upstream to its sources. The most productive gravels were on Upper Bonanza Creek and Eldorado Creek, on the north and west sides of Lone Star Ridge. These portions of the creeks were far richer than other parts of the Klondike and were among the richest placer creeks ever discovered in the world.

The best portion was the 5.5 Km stretch of Eldorado Creek from Gay Gulch down to the mouth, which is estimated to have produced over 1.5 million ounces of gold. About 450 ounces per metre of valley length were recovered by hand mining between 1896 and 1903 from the richest claims, located at the mouth of French Gulch, and the creek was subsequently mined at least twice more, with mechanical methods. Gold from Eldorado Creek was relatively coarse, almost unworn and often angular, with nuggets more

plentiful than on other creeks and often crystalline in form. Several were over 20 ounces in weight and one nugget weighing 86 ounces is the largest reported from the Klondike. Gay Gulch was also gold bearing.

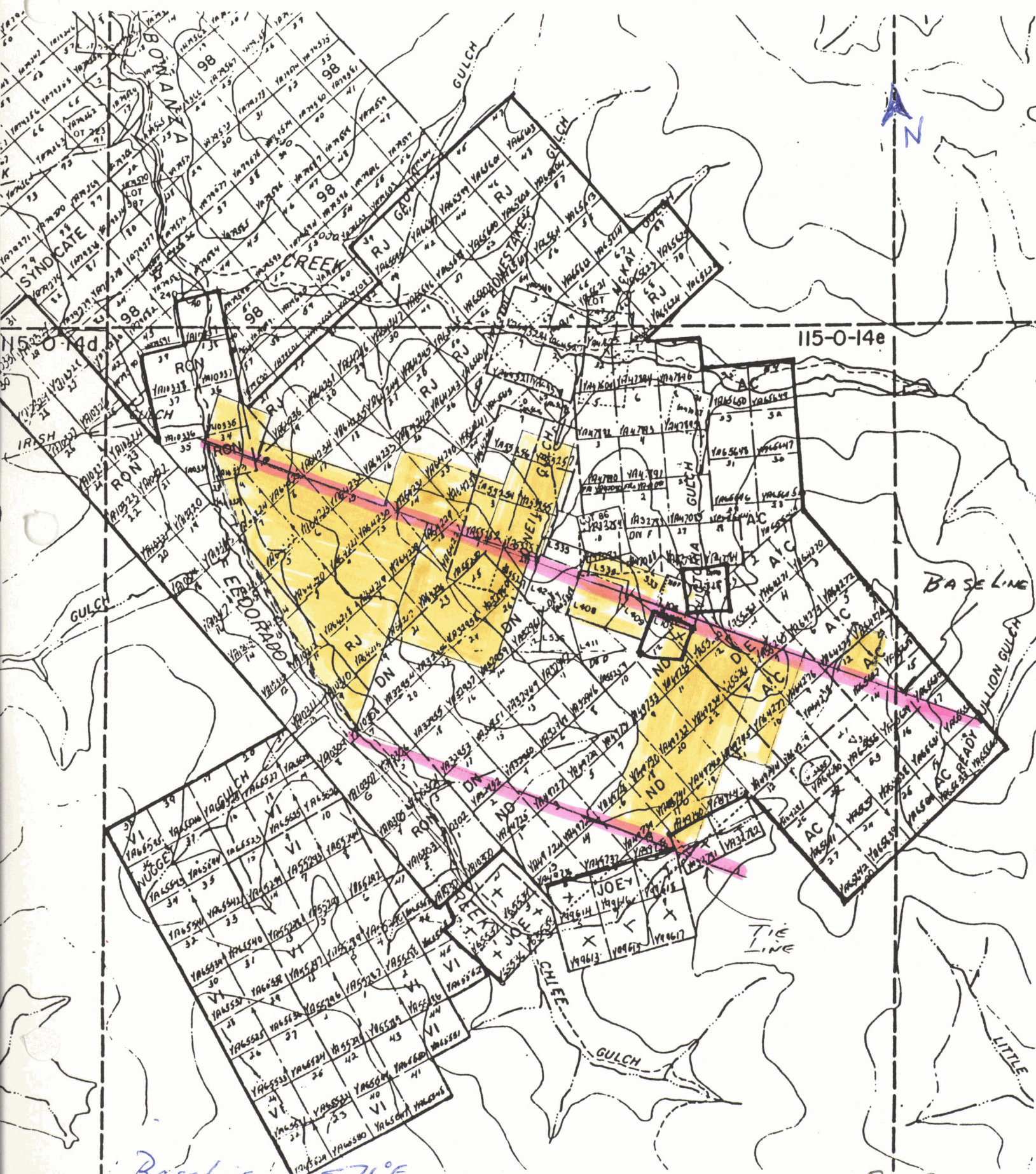
On the opposite side of the Lone Star Ridge, the 2.5 Km stretch of Bonanza Creek below Victoria Gulch was the next richest creek in the Klondike. No claims had been mined at a profit above Victoria Gulch by 1903 and dredging was subsequently conducted only below that point. This portion of Bonanza Creek is estimated to have produced about one million ounces, with the richest claims yielding about 150 ounces per metre of creek length by 1903, prior to dredging. Coarse gold was found in Victoria Gulch, becoming exceedingly rough and angular in the upper part. Coarse, angular nuggets, including one flat oblong 4.5 ounce specimen, were recovered from unworn slide rock at the head of No. 7 Pup."

METHODOLOGY OF 1984 PROGRAM

After the 1983 program of prospecting and mapping performed by Dr. J.K. Mortensen of Archer Cathro & Associates Ltd., the Company elected to perform the following exploration functions in 1984:

1. Restoration of adit at Lone Star Mine site by backhoe and timbering.
2. Extension of Survey Base Line by 5.85 Kilometers to extend base line westerly to Eldorado Creek and easterly to the existing access road to the headwaters of Ready Bullion Creek.
3. Extension of surveyed hand-cut picket lines on either side of the new base line on 400 feet spacing, to cover the company's unexplored claims, a total of 70.5 kilometers.
4. Soil sampling over the new cut lines at 400 ft spacing to cover the majority of the unexplored territory and to partially overlap the 1981 soil sampling program.

PAGE 11 A
 AREA COVERED BY
 1984 GRID & SOIL
 PROGRAM
 DAWSON ELBORADO GOLD.



BASELINE
 SPACING 571' E
 400' LINES 400' STATIONS

FIG. 2

RESULTS OF PROGRAM

Commencing in May 1984, 5.85 Kilometers of Base Line were cut to extend the original E/W (magnetic) base line, to cover the 1985 sampling area. Transverse picket lines were cut and stationed at 400 ft spacing and 400' station intervals. A total of 505 soil samples and 10 fire assay samples were taken and analyzed by Chemex Labs Ltd. of Vancouver, B.C., under Archer, Cathro & Associates Ltd.'s supervision.

The samples were analyzed for Au and As, and the results were plotted on the accompanying maps by R.J. Cathro, P.Eng.

The gold values were plotted and contoured for >15 ppb and >100 ppb, as shown on the map. The Boulder Lode 1981 anomaly was verified, as was a large anomaly at the headwaters of Victoria Gulch and 13 Pup, partially underlain by Lot 105, Yankee Girl, a Crown granted mineral claim.

Geological mapping was conducted by Dr. Mortensen, and the Y.C.G.C. adit under the Boulder Lode was restored by removal of portal debris and re-timbering of the portal to permit partial access.

In addition, archive research indicated the location of various workings on the property, which were located on the ground and examined for geology and gold soil content, as a minor adjunct to the program.

The 1984 program was completed in January 1985 with the compilation of data, mapping and assaying of samples, which had been started since August 1984.

CONCLUSIONS

A program of line-cutting, soil sampling, adit restoration, geological mapping and location of 1900 - 1914 mine workings was undertaken by Archer, Cathro & Associates Ltd., between 15 May 1984 and 31 January 1985.

As result of the program, the following old workings were located and examined:

Robin, Parnell, Nicholas/Delia, Pioneer, Amanda, Christy, Stewart Dysle and Thistle.

5.85 Kilometers of base line, 70.5 Kilometers of picket line, and 515 samples were assayed therefrom.

The gold values plotted verified the two largest anomalies on the property, at Lone Star mine-site and at 13 Pup right limit ridge, near the headwaters of Victoria Gulch.

Geological mapping was performed to locate muscovite-schist horizons which are believed to host gold deposits underlying or near the gold soil anomalies. The mapping indicated a variety of areas of interest.

The program cost an estimated \$50,000 of which ^{\$ 4562.88 pmw 30/11/85} ~~\$11,500~~ was assay cost and \$3500.00 was for compilation and mapping. Line Cutting is estimated at >\$150/Km, all inclusive cost.

RECOMMENDATIONS

- 1) That Lots 104 and 105 (Yankee Girl and Porphyry Lode) be acquired, to complete the Company's mineral rights holdings.
- 2) That the two large anomalies described be trenched, to

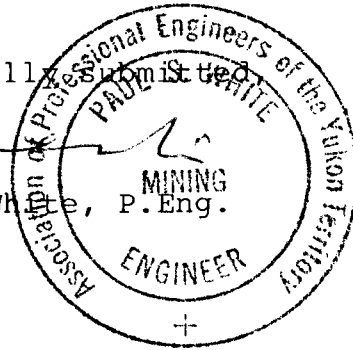
examine, sample and map bedrock exposures and near-bedrock soils for economic gold deposits.

- 3) That minor gold anomalies be trenched and sampled, including the Gay Gulch and Oro Grande anomalies of 1960 -1981.

Respectfully submitted,

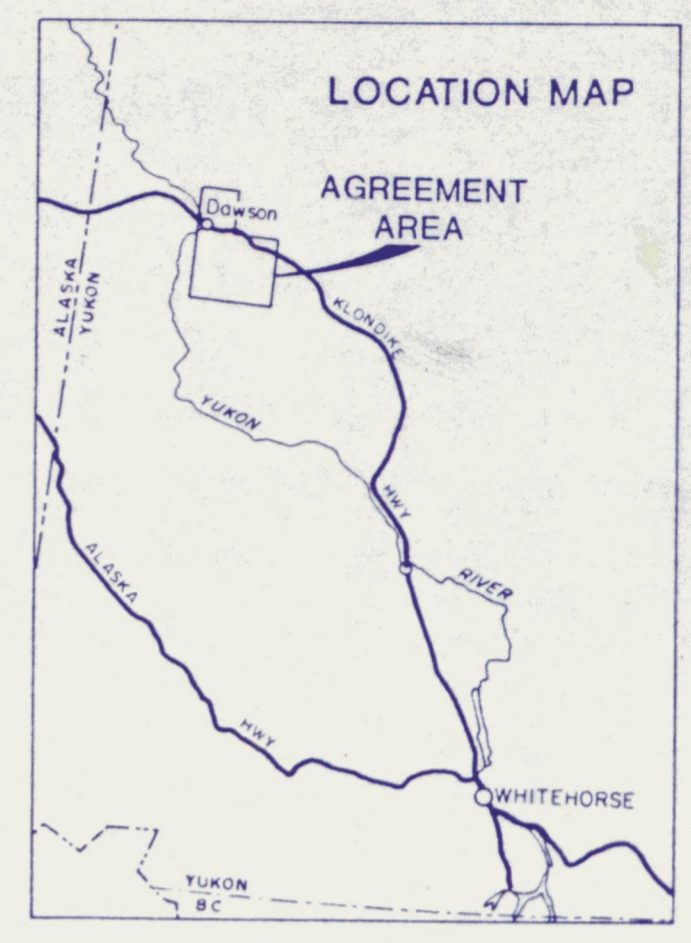
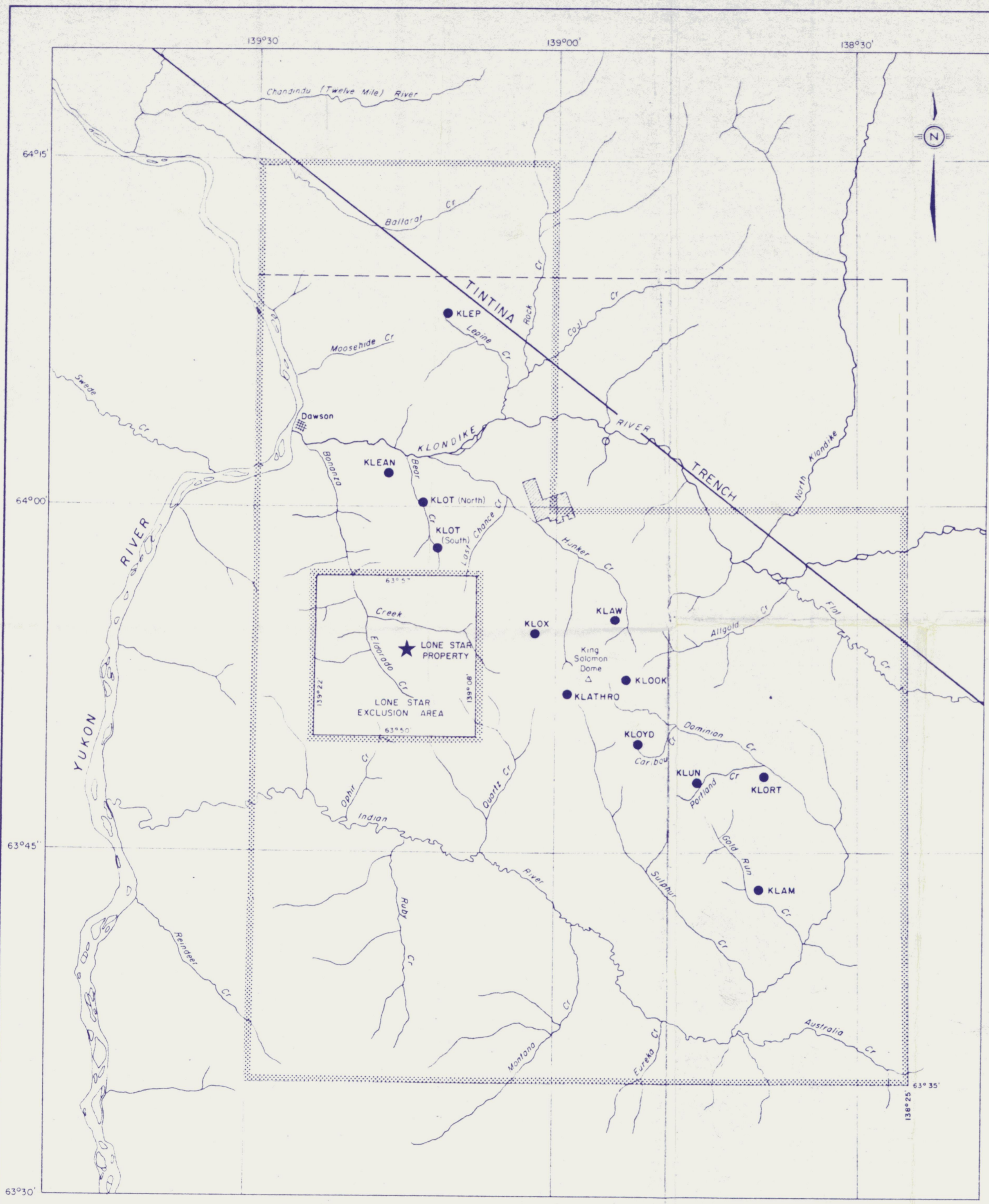


Paul S. White, P.Eng.



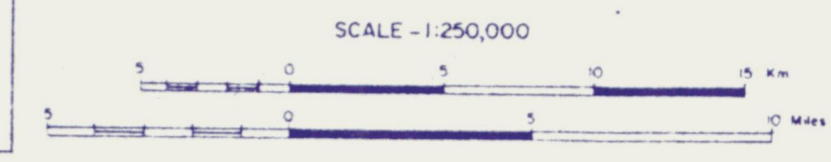
September 16, 1985

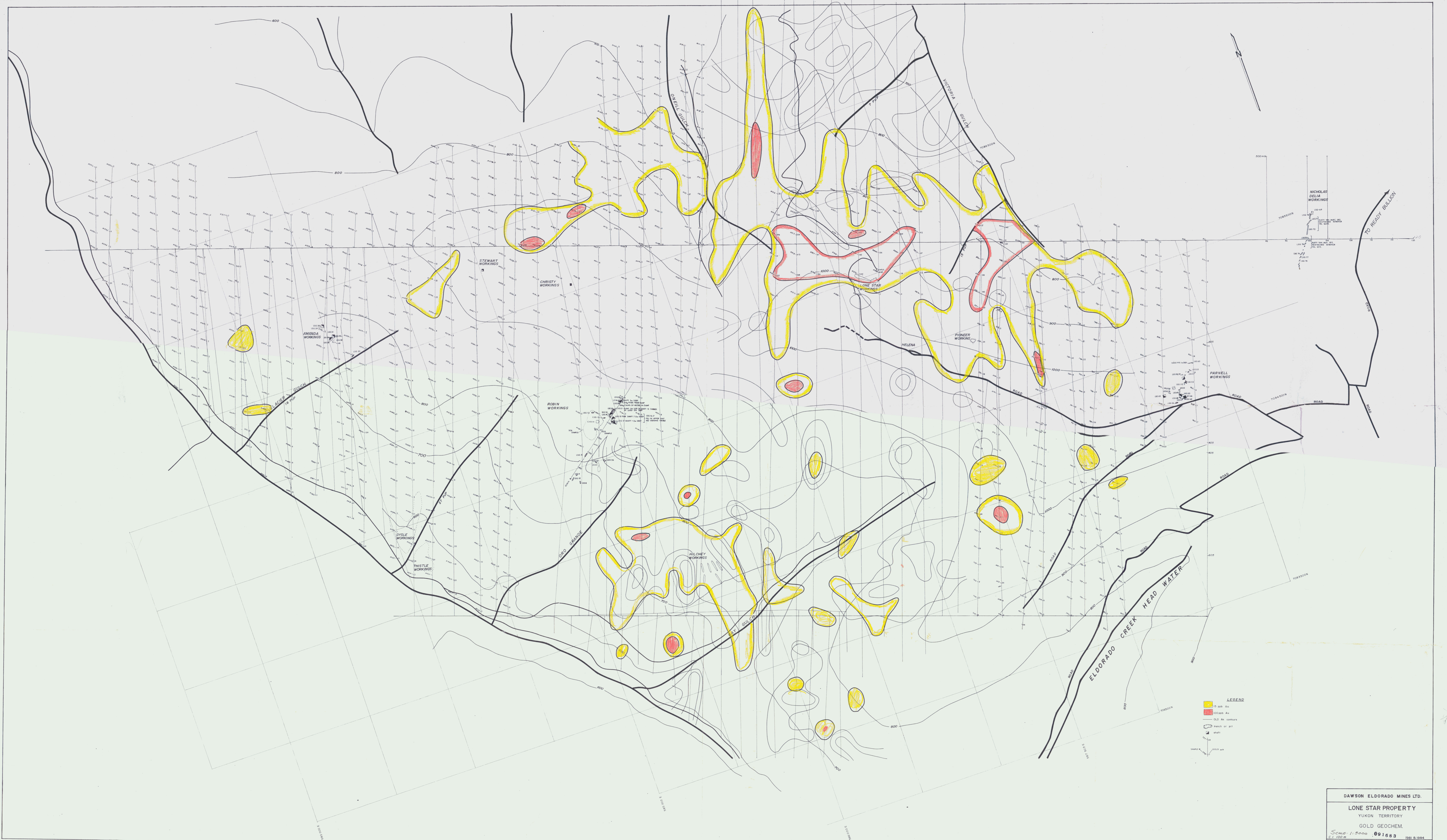
PSW/fvb



- LEGEND**
- Project Boundary
 - Previous Boundary
 - Surprise Claims (CHEVRON)
(AC has prior contractual obligations)
 - KLEP Existing KP claim groups
 - AC target on Germaine Creek

ARCHER, CATHRO & ASSOCIATES (1981) LIMITED
REVISED AGREEMENT AREA
KLONDIKE PROJECT
 DAWSON ELDERADO GOLD EXPLORATIONS LTD
 KLONDIKE DISTRICT, Y.T.



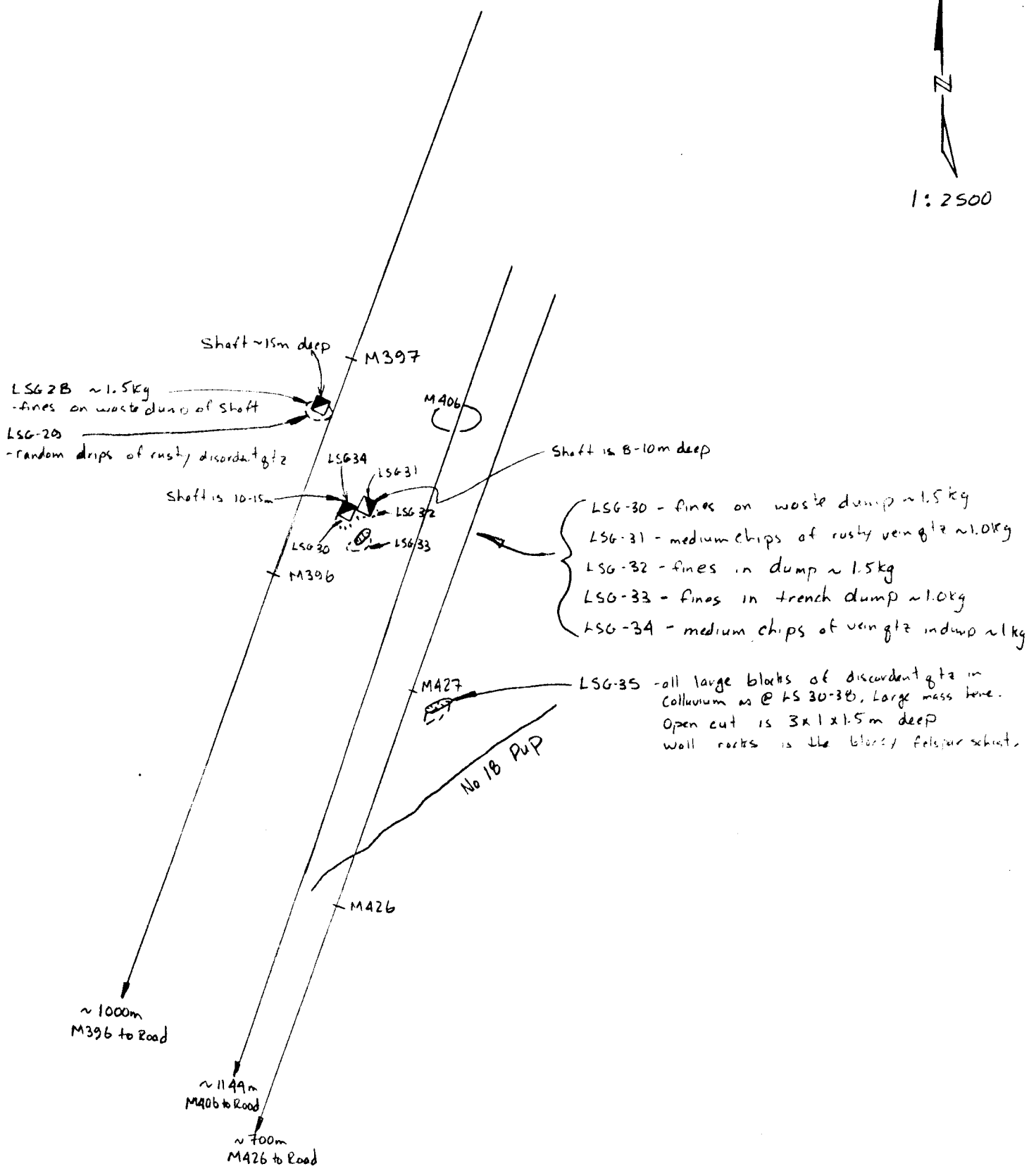


LEGEND
 15 ppb Au
 100 ppb Au
 OLD Au contours
 Mine workings
 Road
 Creek

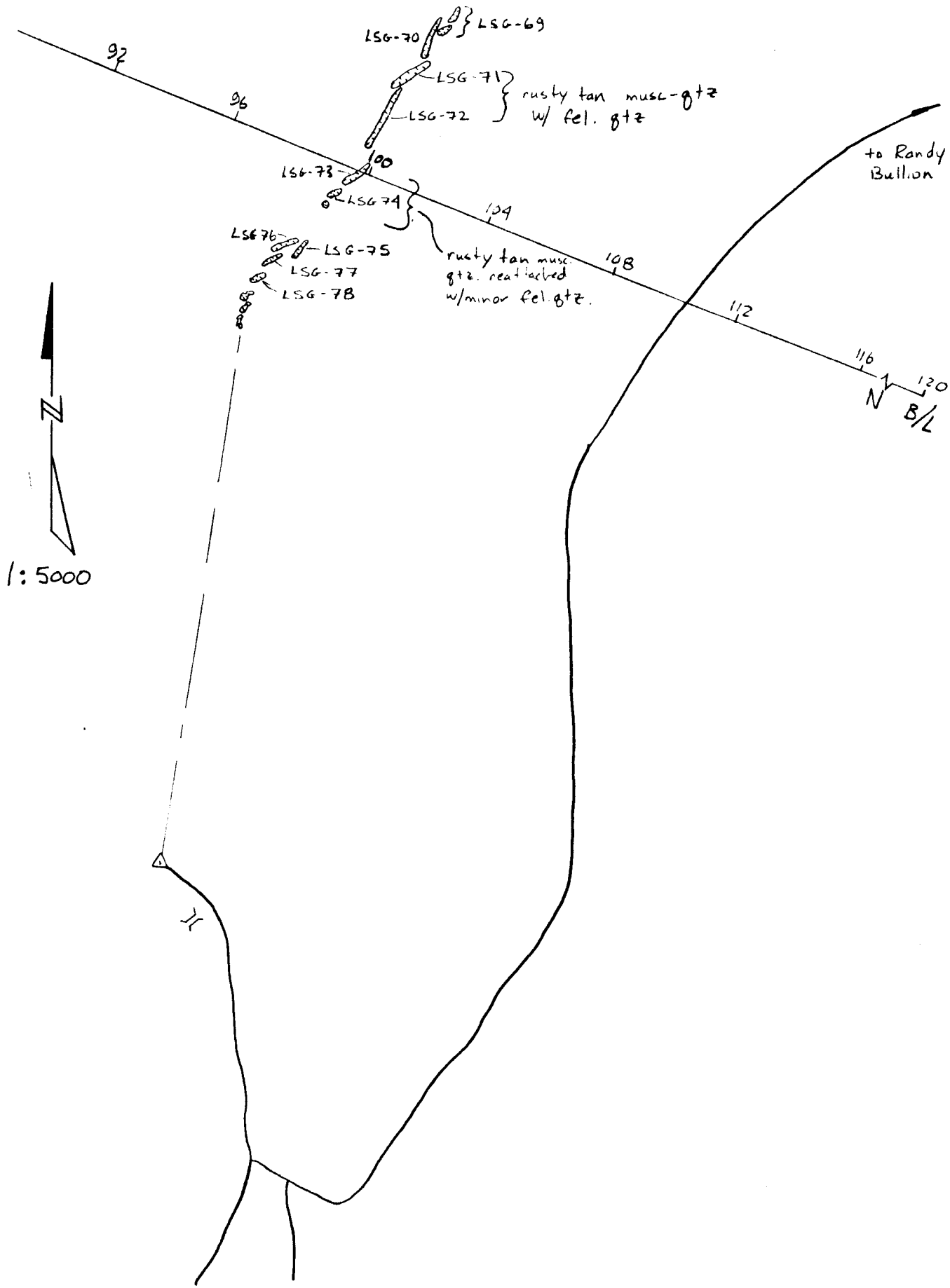
DAWSON ELDERADO MINES LTD.
 LONE STAR PROPERTY
 YUKON TERRITORY
 GOLD GEOCHEM.
 Scale 1:5000
 091683
 DATE: NOV 27, 1985 BY: DRAWING: STH

A P P E N D I C E S

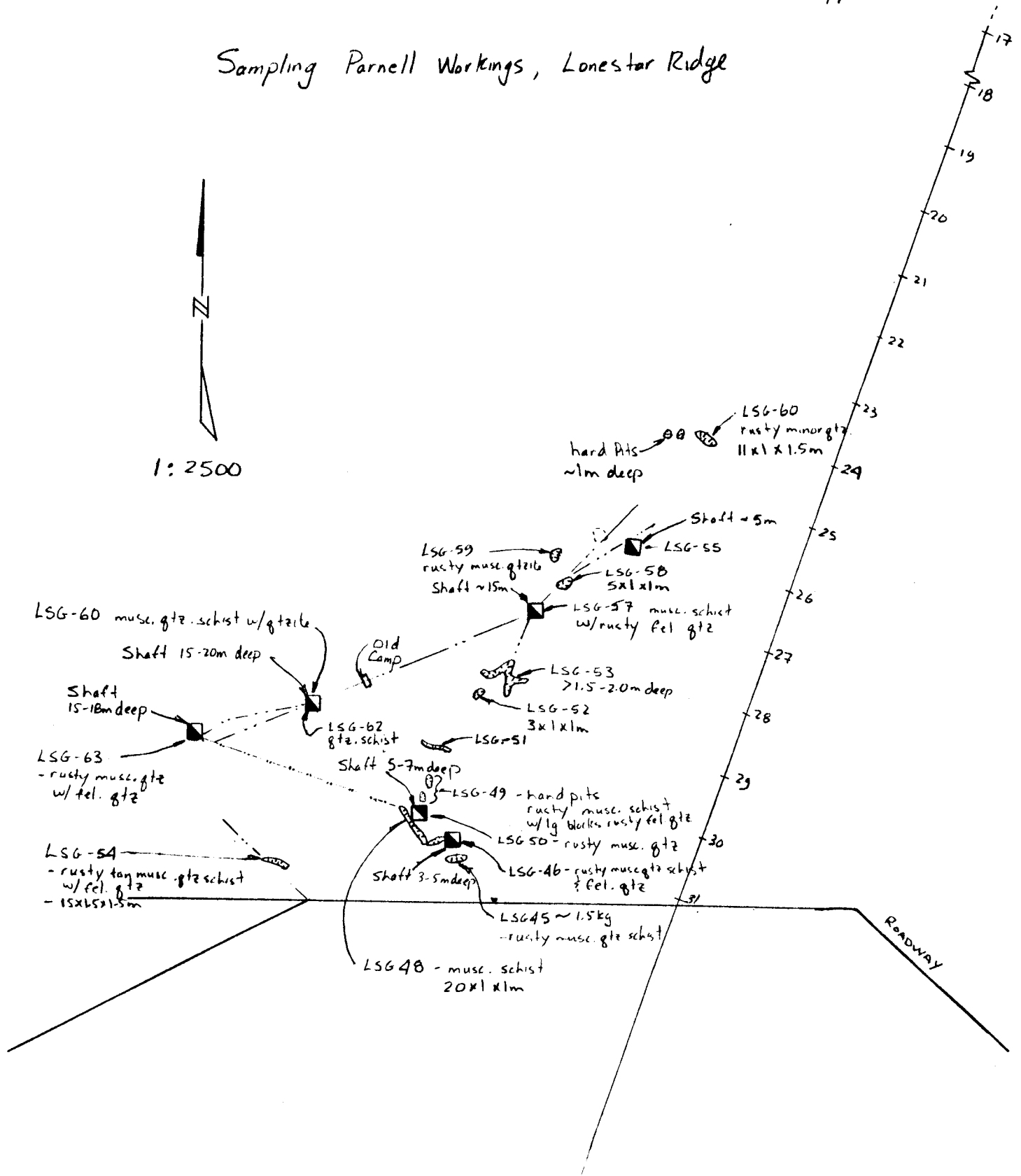
Sampling Old workings on Amanda Claim (18 PuP)



TRENCH SAMPLING: Ridge Crest (Nicholas/Delia M.C)

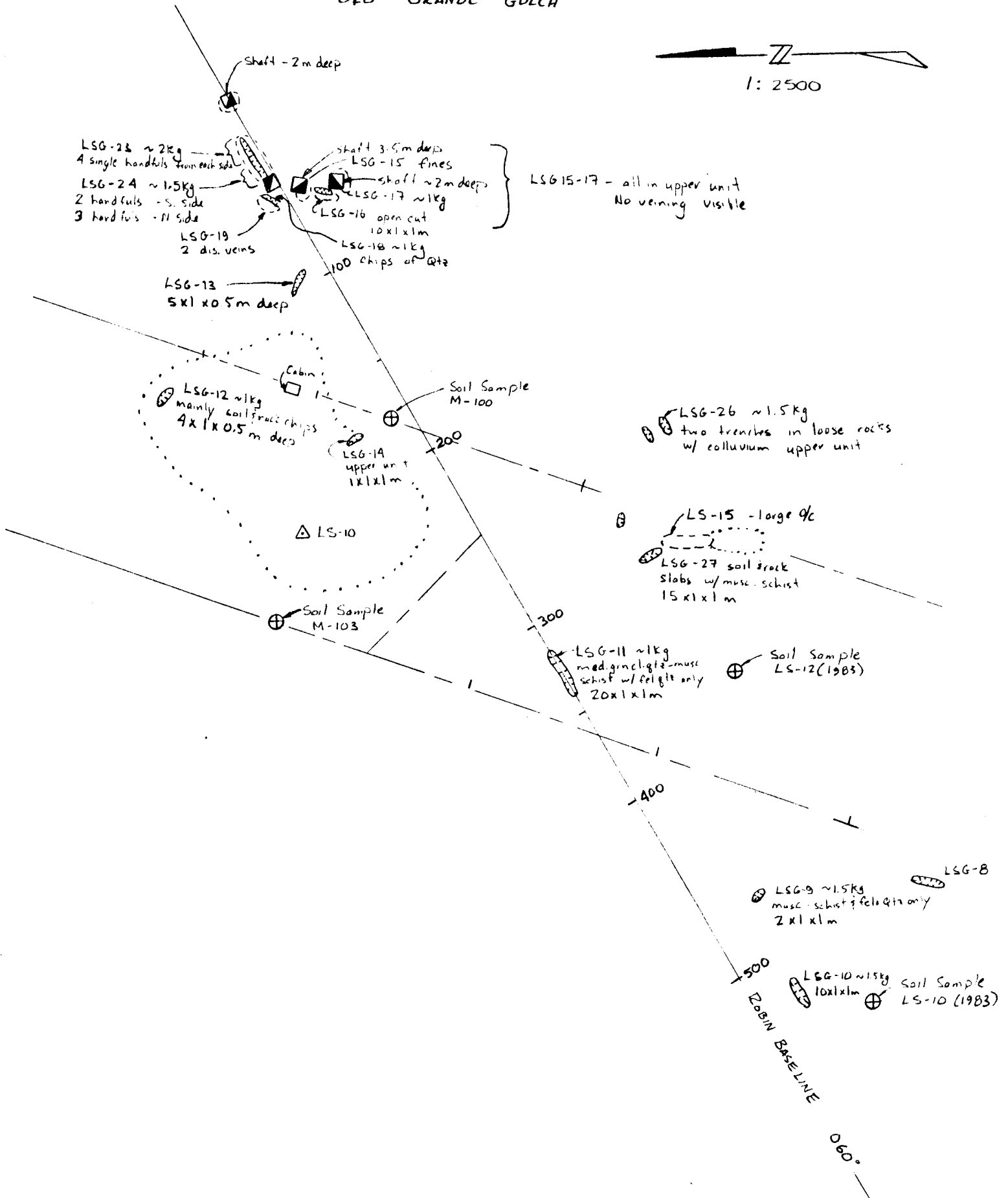
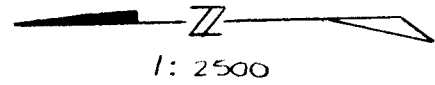


Sampling Parnell Workings, Lonestar Ridge



ROBIN BASELINE SAMPLING

ORO GRANDE GULCH





Chemex Labs Ltd.

Analytical Chemists • Geochemists • Registered Assayers

APPENDIX B

212 Brooksbank Ave.
North Vancouver, B.C.
Canada V7J 2C1
Telephone: (604) 984-0221
Telex: 043-52597

CERTIFICATE OF ANALYSIS

TO : ARCHER CATHRO & ASSOC. (1981) LTD.

1016 - 510 W. HASTINGS ST.
VANCOUVER, B.C.
V6B 1L8

CERT. # : A8414035-001-A
INVOICE # : 18414035
DATE : 30-NOV-84
P.O. # : NONE
LUNE STAR

Sample description	Prep code	AS ppm	Au NAA ppb				
M 001	203	5	5	--	--	--	--
M 004	202	6	38	--	--	--	--
M 006	202	4	486	--	--	--	--
M 007	202	5	161	--	--	--	--
M 009	202	7	11	--	--	--	--
M 010	202	5	19	--	--	--	--
M 011	202	10	2	--	--	--	--
M 013	202	11	4	--	--	--	--
M 014	202	9	<1	--	--	--	--
M 015	202	9	3	--	--	--	--
M 016	202	16	<1	--	--	--	--
M 017	202	9	16	--	--	--	--
M 018	202	10	1	--	--	--	--
M 019	202	11	2	--	--	--	--
M 020	202	5	22	--	--	--	--
M 022	202	7	4	--	--	--	--
M 023	202	7	22	--	--	--	--
M 024	202	4	2	--	--	--	--
M 025	202	5	11	--	--	--	--
M 026	202	4	10	--	--	--	--
M 028	202	5	10	--	--	--	--
M 029	202	9	58	--	--	--	--
M 031	202	5	25	--	--	--	--
M 032	202	6	57	--	--	--	--
M 034	202	9	20	--	--	--	--
M 035	202	7	6	--	--	--	--
M 037	202	7	41	--	--	--	--
M 038	202	9	2	--	--	--	--
M 039	203	12	3	--	--	--	--
M 040	202	10	8	--	--	--	--
M 041	202	24	8	--	--	--	--
M 042	202	32	13	--	--	--	--
M 043	202	11	<1	--	--	--	--
M 044	202	15	2	--	--	--	--
M 045	202	14	1	--	--	--	--
M 046	202	10	1	--	--	--	--
M 047	202	10	1	--	--	--	--
M 048	202	7	1	--	--	--	--
M 049	202	9	2	--	--	--	--
M 050	202	10	3	--	--	--	--



Certified by Hart Buchler



Chemex Labs Ltd.

Analytical Chemists • Geochemists • Registered Assayers

212 Brooksbank Ave.
North Vancouver, B.C.
Canada V7J 2C1
Telephone: (604) 984-0221
Telex: 043 52597

CERTIFICATE OF ANALYSIS

TO : ARCHER CATHRO & ASSOC. (1981) LTD.

1016 - 510 W. HASTINGS ST.
VANCOUVER, B.C.
V6B 1L8

CERT. # : A8414035-002-A
INVOICE # : 18414035
DATE : 30-NOV-84
P.O. # : NONE
LONE STAR

Sample description	Prep code	AS ppm	Au NAA ppb				
M 051	202	18	4	--	--	--	--
M 052	202	12	8	--	--	--	--
M 053	202	24	25	--	--	--	--
M 054	202	15	19	--	--	--	--
M 055	202	12	1	--	--	--	--
M 056	202	5	<1	--	--	--	--
M 057	202	12	<1	--	--	--	--
M 058	202	14	10	--	--	--	--
M 059	202	10	1	--	--	--	--
M 060	202	9	8	--	--	--	--
M 061	203	9	<1	--	--	--	--
M 062	202	5	4	--	--	--	--
M 063	202	5	7	--	--	--	--
M 064	202	10	3	--	--	--	--
M 065	202	9	4	--	--	--	--
M 066	202	12	6	--	--	--	--
M 067	202	14	<1	--	--	--	--
M 068	202	15	<1	--	--	--	--
M 069	202	5	<1	--	--	--	--
M 070	202	7	9	--	--	--	--
M 071	202	4	6	--	--	--	--
M 072	202	7	2	--	--	--	--
M 073	202	16	9	--	--	--	--
M 074	202	12	11	--	--	--	--
M 075	202	7	5	--	--	--	--
M 076	202	19	6	--	--	--	--
M 077	202	14	4	--	--	--	--
M 078	202	16	2	--	--	--	--
M 079	202	7	<1	--	--	--	--
M 080	202	10	3	--	--	--	--
M 081	202	5	31	--	--	--	--
M 082	202	5	<1	--	--	--	--
M 083	202	10	6	--	--	--	--
M 084	202	5	<1	--	--	--	--
M 085	202	4	3	--	--	--	--
M 086	202	7	<1	--	--	--	--
M 087	202	6	3	--	--	--	--
M 088	202	3	4	--	--	--	--
M 089	202	4	4	--	--	--	--
M 090	202	4	8	--	--	--	--



Certified by *Hart Bichler*



Chemex Labs Ltd.

Analytical Chemists • Geochemists • Registered Assayers

212 Brooksbank Ave.
North Vancouver, B.C.
Canada V7J 2C1

Telephone: (604) 984-0221
Telex: 043-52597

CERTIFICATE OF ANALYSIS

TO : ARCHER CATHRO & ASSOC. (1981) LTD.

1016 - 510 W. HASTINGS ST.
VANCOUVER, B.C. ~
V6B 1L8

CERT. # : A8414035-003-A
INVOICE # : 18414035
DATE : 30-NOV-84
P.O. # : NONE
LONE STAR

Sample description	Prep code	AS ppm	Au NAA ppb				
M 091	202	3	<1	--	--	--	--
M 092	202	2	2	--	--	--	--
M 093	202	3	2	--	--	--	--
M 094	202	5	3	--	--	--	--
M 095	202	6	2	--	--	--	--
M 096	202	7	5	--	--	--	--
M 097	202	7	2	--	--	--	--
M 098	202	9	2	--	--	--	--
M 099	202	11	1	--	--	--	--
M 100	202	24	27	--	--	--	--
M 101	202	3	<1	--	--	--	--
M 102	202	4	<1	--	--	--	--
M 103	202	4	<1	--	--	--	--
M 104	202	9	5	--	--	--	--
M 105	202	7	3	--	--	--	--
M 106	202	6	3	--	--	--	--
M 107	202	10	12	--	--	--	--
M 108	202	3	2	--	--	--	--
M 109	202	4	8	--	--	--	--
M 110	202	5	<1	--	--	--	--
M 111	202	4	3	--	--	--	--
M 112	202	6	<1	--	--	--	--
M 113	202	6	<1	--	--	--	--
M 114	202	4	3	--	--	--	--
M 115	202	27	108	--	--	--	--
M 116	202	6	7	--	--	--	--
M 117	202	7	2	--	--	--	--
M 118	202	6	3	--	--	--	--
M 119	202	7	6	--	--	--	--
M 120	202	10	2	--	--	--	--
M 121	202	6	2	--	--	--	--
M 122	202	9	2	--	--	--	--
M 123	202	7	9	--	--	--	--
M 124	202	3	7	--	--	--	--
M 125	202	7	7	--	--	--	--
M 126	202	7	2	--	--	--	--
M 127	202	10	10	--	--	--	--
M 128	202	5	10	--	--	--	--
M 129	202	1	4	--	--	--	--
M 130	202	2	3	--	--	--	--

Certified by *Hart Bichler*





Chemex Labs Ltd.

Analytical Chemists • Geochemists • Registered Assayers

^B
212 Brooksbank Ave.
North Vancouver, B.C.
Canada V7J 2C1
Telephone: (604) 984-0221
Telex: 043-52597

CERTIFICATE OF ANALYSIS

TO : ARCHER CATHRO & ASSOC. (1981) LTD.

1016 - 510 W. HASTINGS ST.
VANCOUVER, B.C.
V6B 1L8

CERT. # : A8414035-004-
INVOICE # : 18414035
DATE : 30-NOV-84
P.O. # : NONE
LONE STAR

Sample description	Prep code	AS ppm	Au NAA ppb				
M 131	202	3	8	--	--	--	--
M 132	202	4	6	--	--	--	--
M 133	202	3	56	--	--	--	--
M 134	202	2	86	--	--	--	--
M 135	202	4	14	--	--	--	--
M 136	202	5	15	--	--	--	--
M 137	202	6	4	--	--	--	--
M 138	202	10	1	--	--	--	--
M 139	202	4	2	--	--	--	--
M 140	202	23	<1	--	--	--	--
M 141	202	10	<1	--	--	--	--
M 142	202	4	2	--	--	--	--
M 143	202	10	9	--	--	--	--
M 144	202	6	14	--	--	--	--
M 145	202	5	13	--	--	--	--
M 146	202	3	20	--	--	--	--
M 147	202	6	21	--	--	--	--
M 148	202	5	23	--	--	--	--
M 149	202	5	27	--	--	--	--
M 150	202	4	5	--	--	--	--
M 151	202	1	31	--	--	--	--
M 152	202	5	5	--	--	--	--
M 153	202	6	5	--	--	--	--
M 154	202	9	22	--	--	--	--
M 155	202	6	20	--	--	--	--
M 156	202	7	38	--	--	--	--
M 157	202	10	54	--	--	--	--
M 158	202	9	49	--	--	--	--
M 159	202	4	7	--	--	--	--
M 160	202	6	9	--	--	--	--
M 161	202	6	4	--	--	--	--
M 162	202	9	5	--	--	--	--
M 163	202	39	5	--	--	--	--
M 164	202	12	3	--	--	--	--
M 165	202	9	<1	--	--	--	--
M 166	202	10	<1	--	--	--	--
M 167	202	7	7	--	--	--	--
M 168	202	6	7	--	--	--	--
M 169	202	6	14	--	--	--	--
M 170	202	7	55	--	--	--	--



Certified by Hart Bechler



Chemex Labs Ltd.

Analytical Chemists • Geochemists • Registered Assayers

^B
212 Brooksbank Ave.
North Vancouver, B.C.
Canada V7J 2C1
Telephone: (604) 984-0221
Telex: 043-52597

CERTIFICATE OF ANALYSIS

TO : ARCHER CATHRO & ASSOC. (1981) LTD.

1016 - 510 W. HASTINGS ST.
VANCOUVER, B.C.
V6B 1L8

CERT. # : A8414035-005-A
INVOICE # : 18414035
DATE : 30-NOV-84
P.O. # : NONE
LONE STAR

Sample description	Prep code	AS ppm	Au NAA ppb				
M 171	202	4	13	--	--	--	--
M 172	202	6	20	--	--	--	--
M 173	202	15	75	--	--	--	--
M 174	202	16	15	--	--	--	--
M 175	202	22	<1	--	--	--	--
M 176	202	12	2	--	--	--	--
M 177	202	5	<1	--	--	--	--
M 178	202	9	6	--	--	--	--
M 179	202	9	157	--	--	--	--
M 180	202	5	3	--	--	--	--
M 181	202	5	26	--	--	--	--
M 182	202	7	6	--	--	--	--
M 183	202	6	20	--	--	--	--
M 184	202	6	2	--	--	--	--
M 185	202	5	4	--	--	--	--
M 186	202	5	4	--	--	--	--
M 187	202	7	11	--	--	--	--
M 188	202	6	35	--	--	--	--
M 189	202	6	16	--	--	--	--
M 190	202	7	24	--	--	--	--
M 191	202	11	21	--	--	--	--
M 192	202	9	5	--	--	--	--
M 193	202	5	9	--	--	--	--
M 194	202	6	19	--	--	--	--
M 195	202	7	1	--	--	--	--
M 196	202	7	16	--	--	--	--
M 197	202	3	3	--	--	--	--
M 198	202	1	7	--	--	--	--
M 199	202	4	7	--	--	--	--
M 200	202	3	15	--	--	--	--
M 201	202	6	32	--	--	--	--
M 202	202	19	100	--	--	--	--
M 203	202	5	1	--	--	--	--
M 204	202	6	4	--	--	--	--
M 205	202	7	12	--	--	--	--
M 206	202	7	9	--	--	--	--
M 207	202	5	11	--	--	--	--
M 208	202	5	6	--	--	--	--
M 209	202	5	3	--	--	--	--
M 210	202	3	7	--	--	--	--

Hart Buchler

Certified by





Chemex Labs Ltd.

Analytical Chemists • Geochemists • Registered Assayers

212 Brooksbank Ave.
North Vancouver, B.C.
Canada V7J 2C1

Telephone: (604) 984-0221
Telex: 043-52597

CERTIFICATE OF ANALYSIS

TO : ARCHER CATRO & ASSOC. (1981) LTD.

1016 - 510 W. HASTINGS ST.
VANCOUVER, B.C.
V6B 1L8

CERT. # : A8414035-006-A
INVOICE # : 18414035
DATE : 30-NOV-84
P.O. # : NONE
LONE STAR

Sample description	Prep code	AS ppm	Au NAA ppb				
M 211	202	5	13	--	--	--	--
M 212	202	3	6	--	--	--	--
M 213	202	4	7	--	--	--	--
M 214	202	10	<1	--	--	--	--
M 215	202	4	5	--	--	--	--
M 216	202	4	4	--	--	--	--
M 217	202	4	<1	--	--	--	--
M 218	202	3	<1	--	--	--	--
M 219	202	3	1	--	--	--	--
M 220	202	6	12	--	--	--	--
M 221	202	9	3	--	--	--	--
M 222	202	5	<1	--	--	--	--
M 223	202	11	9	--	--	--	--
M 224	202	5	<1	--	--	--	--
M 225	202	12	<1	--	--	--	--
M 226	202	11	2	--	--	--	--
M 227	202	46	8	--	--	--	--
M 228	202	39	23	--	--	--	--
M 229	202	15	<1	--	--	--	--
M 230	202	11	3	--	--	--	--
M 231	202	8	16	--	--	--	--
M 232	202	10	<1	--	--	--	--
M 233	202	4	5	--	--	--	--



Certified by Hart Bichler.....



Chemex Labs Ltd.

Analytical Chemists • Geochemists • Registered Assayers

212 Brooksbank Ave.
North Vancouver, B.C.
Canada V7J 2C1
Telephone: (604) 984-0221
Telex: 043-52597

CERTIFICATE OF ANALYSIS

TO : ARCHER CATHRO & ASSOC. (1981) LTD.

1016 - 510 W. HASTINGS ST.
VANCOUVER, B.C.
V6B 1L8

CERT. # : A8414036-001-A
INVOICE # : 18414036
DATE : 30-NOV-84
P.O. # : NONE
LDNE STAR

Sample description	Prep code	AS ppm	AU NAA ppb				
M 234	202	14	3	--	--	--	--
M 235	202	10	<1	--	--	--	--
M 236	202	25	1	--	--	--	--
M 237	202	11	23	--	--	--	--
M 238	202	6	5	--	--	--	--
M 239	202	6	3	--	--	--	--
M 240	202	5	1	--	--	--	--
M 241	202	2	2	--	--	--	--
M 242	202	6	4	--	--	--	--
M 243	202	3	2	--	--	--	--
M 244	202	7	<1	--	--	--	--
M 245	202	14	4	--	--	--	--
M 246	202	14	2	--	--	--	--
M 247	202	9	4	--	--	--	--
M 248	202	6	20	--	--	--	--
M 249	202	12	7	--	--	--	--
M 250	202	7	<1	--	--	--	--
M 251	202	15	20	--	--	--	--
M 252	202	6	5	--	--	--	--
M 253	202	9	5	--	--	--	--
M 254	202	5	4	--	--	--	--
M 255	202	2	1	--	--	--	--
M 256	202	2	6	--	--	--	--
M 257	202	3	4	--	--	--	--
M 258	202	5	2	--	--	--	--
M 259	202	5	3	--	--	--	--
M 260	202	9	1	--	--	--	--
M 261	202	4	<1	--	--	--	--
M 262	202	5	1	--	--	--	--
M 263	202	3	2	--	--	--	--
M 264	202	6	7	--	--	--	--
M 265	202	5	5	--	--	--	--
M 266	202	5	3	--	--	--	--
M 267	202	6	4	--	--	--	--
M 268	202	4	<1	--	--	--	--
M 269	202	5	2	--	--	--	--
M 270	202	6	2	--	--	--	--
M 271	202	6	2	--	--	--	--
M 272	202	7	2	--	--	--	--
M 273	202	9	1	--	--	--	--

Hart Bichler

Certified by





Chemex Labs Ltd.

Analytical Chemists • Geochemists • Registered Assayers

212 Brooksbank Ave.
North Vancouver, B.C.
Canada V7J 2C1

Telephone: (604) 984-0221
Telex: 043-52597

CERTIFICATE OF ANALYSIS

TO : ARCHER CATHRO & ASSOC. (1981) LTD.

1016 - 510 W. HASTINGS ST.
VANCOUVER, B.C.
V6B 1L8

CERT. # : A8414036-002-A
INVOICE # : 18414036
DATE : 30-NOV-84
P.O. # : NONE
LONE STAR

Sample description	Prep code	AS ppm	Au NAA ppb				
M 274	202	4	3	--	--	--	--
M 275	202	3	<1	--	--	--	--
M 276	202	5	2	--	--	--	--
M 277	202	5	4	--	--	--	--
M 278	202	4	4	--	--	--	--
M 279	202	12	<1	--	--	--	--
M 280	202	6	<1	--	--	--	--
M 281	202	32	50	--	--	--	--
M 282	202	6	5	--	--	--	--
M 283	202	16	<1	--	--	--	--
M 284	202	9	5	--	--	--	--
M 285	202	33	43	--	--	--	--
M 286	202	12	13	--	--	--	--
M 287	202	10	15	--	--	--	--
M 288	202	9	4	--	--	--	--
M 289	202	3	10	--	--	--	--
M 290	202	6	2	--	--	--	--
M 291	202	6	<1	--	--	--	--
M 292	202	5	<1	--	--	--	--
M 293	202	4	8	--	--	--	--
M 294	202	6	3	--	--	--	--
M 295	202	7	<1	--	--	--	--
M 296	202	9	<1	--	--	--	--
M 297	202	4	<1	--	--	--	--
M 298	202	6	2	--	--	--	--
M 299	202	7	5	--	--	--	--
M 300	202	10	1	--	--	--	--
M 301	202	9	5	--	--	--	--
M 302	202	17	46	--	--	--	--
M 303	202	27	1	--	--	--	--
M 304	202	10	6	--	--	--	--
M 305	202	45	1	--	--	--	--
M 306	202	14	1	--	--	--	--
M 307	202	23	2	--	--	--	--
M 308	202	10	2	--	--	--	--
M 309	202	9	2	--	--	--	--
M 310	202	9	<1	--	--	--	--
M 311	202	9	<1	--	--	--	--
M 312	202	7	<1	--	--	--	--
M 313	202	6	2	--	--	--	--

Certified by *Hart Buchler*





Chemex Labs Ltd.

Analytical Chemists • Geochemists • Registered Assayers

212 Brooksbank Ave.
North Vancouver, B.C.
Canada V7J 2C1
Telephone: (604) 984-0221
Telex: 043-52597

CERTIFICATE OF ANALYSIS

TO : ARCHER CATHRO & ASSOC. (1981) LTD.

1016 - 510 W. HASTINGS ST.
VANCOUVER, B.C.
V6B 1L8

CERT. # : A8414036-003-A
INVOICE # : I8414036
DATE : 30-NOV-84
P.O. # : NONE
LONE STAR

Sample description	Prep code	AS ppm	Au NAA ppb				
M 314	202	7	5	--	--	--	--
M 315	202	9	2	--	--	--	--
M 316	202	7	<1	--	--	--	--
M 317	202	4	<1	--	--	--	--
M 318	202	9	1	--	--	--	--
M 319	202	10	4	--	--	--	--
M 320	202	9	6	--	--	--	--
M 321	202	5	<1	--	--	--	--
M 322	202	10	<1	--	--	--	--
M 323	202	10	<1	--	--	--	--
M 324	202	20	<1	--	--	--	--
M 325	202	32	19	--	--	--	--
M 326	202	27	14	--	--	--	--
M 327	202	9	93	--	--	--	--
M 328	202	14	8	--	--	--	--
M 329	202	10	<1	--	--	--	--
M 330	202	11	29	--	--	--	--
M 331	202	65	<1	--	--	--	--
M 332	202	10	9	--	--	--	--
M 333	202	7	3	--	--	--	--
M 334	202	5	73	--	--	--	--
M 335	202	5	<1	--	--	--	--
M 336	202	20	<1	--	--	--	--
M 337	202	12	<1	--	--	--	--
M 338	202	77	26	--	--	--	--
M 339	202	9	61	--	--	--	--
M 340	202	23	<1	--	--	--	--
M 341	202	10	2	--	--	--	--
M 342	202	6	3	--	--	--	--
M 343	202	10	2	--	--	--	--
M 344	202	12	3	--	--	--	--
M 345	202	43	2	--	--	--	--
M 346	202	55	8	--	--	--	--
M 347	202	6	18	--	--	--	--
M 348	202	5	3	--	--	--	--
M 349	202	9	74	--	--	--	--
M 350	202	6	<1	--	--	--	--
M 351	202	3	4	--	--	--	--
M 352	202	10	33	--	--	--	--
M 353	202	4	<1	--	--	--	--

Certified by Hart Bichler





Chemex Labs Ltd.

Analytical Chemists • Geochemists • Registered Assayers

212 Brooksbank Ave.
North Vancouver, B.C.
Canada V7J 2C1
Telephone: (604) 984-0221
Telex: 043-52597

CERTIFICATE OF ANALYSIS

TO : ARCHER CATHRO & ASSOC. (1981) LTD.

1016 - 510 W. HASTINGS ST.
VANCOUVER, B.C.
V6B 1L8

CERT. # : A8414036-004-
INVOICE # : 18414036
DATE : 30-NOV-84
P.O. # : NONE
LONE STAR

Sample description	Prep code	AS ppm	Au NAA ppb				
M 354	202	4	5	--	--	--	--
M 355	202	3	<1	--	--	--	--
M 356	202	2	11	--	--	--	--
M 357	202	5	3	--	--	--	--
M 358	202	3	5	--	--	--	--
M 359	202	6	1	--	--	--	--
M 360	202	6	13	--	--	--	--
M 361	202	5	<1	--	--	--	--
M 362	202	2	2	--	--	--	--
M 363	202	5	5	--	--	--	--
M 364	202	5	2	--	--	--	--
M 365	202	6	<1	--	--	--	--
M 366	202	1	1	--	--	--	--
M 367	202	3	3	--	--	--	--
M 368	202	6	3	--	--	--	--
M 369	202	3	8	--	--	--	--
M 370	202	2	7	--	--	--	--
M 371	202	2	<1	--	--	--	--
M 372	202	4	14	--	--	--	--
M 373	202	5	2	--	--	--	--
M 374	202	3	<1	--	--	--	--
M 375	202	4	2	--	--	--	--
M 376	202	3	3	--	--	--	--
M 377	202	4	<1	--	--	--	--
M 378	202	5	62	--	--	--	--
M 379	202	3	1	--	--	--	--
M 380	202	4	10	--	--	--	--
M 381	202	3	1	--	--	--	--
M 382	202	3	4	--	--	--	--
M 383	202	14	4	--	--	--	--
M 384	202	55	21	--	--	--	--
M 385	202	32	31	--	--	--	--
M 386	202	24	11	--	--	--	--
M 387	202	20	10	--	--	--	--
M 388	202	24	2	--	--	--	--
M 389	202	6	<1	--	--	--	--
M 390	202	7	<1	--	--	--	--
M 391	202	5	2	--	--	--	--
M 392	202	4	6	--	--	--	--
M 393	202	1	5	--	--	--	--

Certified by *Hart Bickler*





Chemex Labs Ltd.

Analytical Chemists • Geochemists • Registered Assayers

^B
212 Brooksbank Ave.
North Vancouver, B.C.
Canada V7J 2C1
Telephone: (604) 984-0221
Telex: 043-52597

CERTIFICATE OF ANALYSIS

TO : ARCHER CATHRO & ASSOC. (1981) LTD.

1016 - 510 W. HASTINGS ST.
VANCOUVER, B.C.
V6B 1L8

CERT. # : A8414036-005-A
INVOICE # : I8414036
DATE : 30-NOV-84
P.O. # : NONE
LONE STAR

Sample description	Prep code	AS ppm	Au NAA ppu				
M 394	202	3	38	--	--	--	--
M 395	202	3	<1	--	--	--	--
M 396	202	3	2	--	--	--	--
M 397	202	6	<1	--	--	--	--
M 398	202	6	<1	--	--	--	--
M 399	202	6	4	--	--	--	--
M 400	202	11	2	--	--	--	--
M 401	202	6	6	--	--	--	--
M 402	202	6	<1	--	--	--	--
M 403	202	7	<1	--	--	--	--
M 404	202	7	2	--	--	--	--
M 405	202	7	<1	--	--	--	--
M 406	202	6	6	--	--	--	--
M 407	202	2	48	--	--	--	--
M 408	202	5	8	--	--	--	--
M 409	202	6	7	--	--	--	--
M 410	202	5	13	--	--	--	--
M 411	202	7	5	--	--	--	--
M 412	202	9	3	--	--	--	--
M 413	202	7	4	--	--	--	--
M 414	202	16	9	--	--	--	--
M 415	202	11	5	--	--	--	--
M 416	202	14	12	--	--	--	--
M 417	202	33	4	--	--	--	--
M 418	202	19	<1	--	--	--	--
M 419	202	10	9	--	--	--	--
M 420	202	10	<1	--	--	--	--
M 421	202	4	4	--	--	--	--
M 422	202	24	3	--	--	--	--
M 423	202	14	8	--	--	--	--
M 424	202	7	14	--	--	--	--
M 425	202	9	5	--	--	--	--
M 426	202	9	<1	--	--	--	--
M 427	202	6	<1	--	--	--	--
M 428	202	5	11	--	--	--	--
M 429	202	7	<1	--	--	--	--
M 430	202	5	<1	--	--	--	--
M 431	202	11	2	--	--	--	--
M 432	202	11	<1	--	--	--	--
M 433	202	9	6	--	--	--	--



Certified by Hart Bichler



Chemex Labs Ltd.

Analytical Chemists • Geochemists • Registered Assayers

212 Brooksbank Ave.
North Vancouver, B.C.
Canada V7J 2C1

Telephone: (604) 984-0221
Telex: 043-52597

CERTIFICATE OF ASSAY

TO : ARCHER CATHRO & ASSOC. (1981) LTD.

1016 - 510 W. HASTINGS ST.
VANCOUVER, B.C.
V6B 1L8

CERT. # : A8418408-001-A
INVOICE # : I8418408
DATE : 6-DEC-84
P.O. # : NONE
LONE STAR

Sample description	Prep code	Au FA oz/T				
PIONEER D	214	0.186	--	--	--	--

.....
Registered Assayer, Province of British Columbia





Chemex Labs Ltd.

Analytical Chemists • Geochemists • Registered Assayers

212 Brooksbank Ave.
North Vancouver, B.C.
Canada V7J 2C1
Telephone: (604) 984-0221
Telex: 043-52597

CERTIFICATE OF ANALYSIS

TO : ARCHER CATHRO & ASSOC. (1981) LTD.

1016 - 510 W. HASTINGS ST.
VANCOUVER, B.C.
V6B 1L8

CERT. # : A8414037-001-A
INVOICE # : 18414037
DATE : 3-DEC-84
P.O. # : NONE
LONE STAR

DUMP FINES

Sample description	Prep code	Pb ppm	Ag ppm	AS ppm	Au NAA ppb		
SHAFT PIONEER A ABOVE DOBEREZ	205	129	2.5	75	28	--	--
" PIONEER B TRENCH	205	20	0.8	46	22	--	--
" PIONEER C BELOW "	205	33	0.3	9	56	--	--
PIONEER D VEIN IN "	205	29	4.4	63	6260	--	--
PIONEER E " " "	205	1	0.5	3	314	--	--
SHAFT HELENA SHAFT.	205	21	0.7	73	16	--	--
7-PUP VEIN AT TOP OF PLATE WORKING	205	239	3.5	4	104	--	--
WEAR PUEL TANK { UU-VEIN A TRENCH	205	11	0.3	6	7	--	--
UU-VEIN B "	205	10	0.2	2	<1	--	--
LSG-1 SHAFT	205	80	0.6	4	18	--	--
LSG-2 "	205	57	1.3	3	4	--	--
LSG-3 PIT	205	840	1.0	11	9	--	--
Y LSG-4 PIT	205	254	6.8	55	540	--	--



Certified by Hart Buchler



Chemex Labs Ltd.

Analytical Chemists • Geochemists • Registered Assayers

212 Brooksbank Ave.
North Vancouver, B.C.
Canada V7J 2C1
Telephone: (604) 984-0221
Telex: 043-52597

CERTIFICATE OF ANALYSIS

TO : ARCHER CATHRO & ASSOC. (1981) LTD.

1016 - 510 W. HASTINGS ST.
VANCOUVER, B.C.
V6B 1L8

CERT. # : A8418382-001-A
INVOICE # : I8418382
DATE : 13-DEC-84
P.O. # : NONE
KLONDIKE

Sample description	Prep code	Pb ppm	Ag ppm	AS ppm	Au NAA ppb		
← LSG 08	205	33	0.2	15	13	--	--
← LSG 09	205	12	0.2	2	61	--	--
← LSG 10	205	12	0.3	3	283	--	--
← LSG 11	205	19	0.3	24	10	--	--
← LSG 12	205	38	0.1	16	15	--	--
← LSG 13	205	28	0.1	15	6	--	--
← LSG 14	205	83	0.1	90	26	--	--
← LSG 15	205	67	0.1	6	7	--	--
← LSG 16	205	98	0.1	4	3	--	--
← LSG 17	205	19	0.1	10	7	--	--
← LSG 18	205	60	0.2	1	2	--	--
← LSG 19	205	60	0.1	6	3	--	--
← LSG 20	205	82	0.1	6	8	--	--
← LSG 21	205	92	0.1	5	5	--	--
← LSG 22	205	153	0.1	22	24	--	--
← LSG 23	205	71	0.1	24	26	--	--
← LSG 24	205	92	0.1	10	22	--	--
← LSG 25	205	510	1.9	110	60	--	--
← LSG 26	205	37	0.1	4	<1	--	--
← LSG 27	205	14	0.1	9	2	--	--
← LSG 28	205	14	0.1	3	7	--	--
← LSG 29	205	3	0.1	1	<1	--	--
← LSG 30	205	18	0.1	3	8	--	--
← LSG 31	205	3	0.1	1	<1	--	--
← LSG 32	205	16	0.1	1	4	--	--
← LSG 33	205	28	0.2	1	<1	--	--
← LSG 34	205	2	0.2	1	1	--	--
← LSG 35	205	8	0.1	1	4	--	--
← LSG 36	205	14	0.2	10	930	--	--
← LSG 37	205	91	0.1	9	270	--	--
← LSG 38	205	33	0.1	1	12	--	--
← LSG 39	205	17	0.1	4	<1	--	--
← LSG 41	205	44	0.1	2	<1	--	--
← LSG 42	205	77	0.1	1	<1	--	--
← LSG 43	205	20	0.1	1	<1	--	--
← LSG 44	205	21	0.1	1	8	--	--
← LSG 45	205	368	0.4	125	<1	--	--
← LSG 46	205	79	0.1	19	<1	--	--
← LSG 47	205	47	0.1	11	<1	--	--
← LSG 48	205	79	0.3	19	2	--	--

ROBIN TRENCHES

ANANDA

PRENEU



Certified by *H. B. Buchler*



Chemex Labs Ltd.

Analytical Chemists • Geochemists • Registered Assayers

13
212 Brooksbank Ave.
North Vancouver, B.C.
Canada V7J 2C1
Telephone: (604) 984-0221
Telex: 043-52597

CERTIFICATE OF ANALYSIS

TO : ARCHER CATHRO & ASSOC. (1981) LTD.

1016 - 510 W. HASTINGS ST.
VANCOUVER, B.C.
V6B 1L8

CERT. # : A8418382-002-
INVOICE # : I8418382
DATE : 13-DEC-84
P.O. # : NONE
KLONDIKE

Sample description	Prep code	Pb ppm	Ag ppm	AS ppm	Au NAA ppb		
LSG 49	205	333	0.8	29	3	--	--
LSG 50	205	500	0.9	15	4	--	--
LSG 51	205	400	0.6	45	<1	--	--
LSG 52	205	510	0.7	27	<1	--	--
LSG 53	205	143	0.7	10	<1	--	--
LSG 54	205	134	0.3	22	5	--	--
LSG 55	205	41	0.5	4	1525	--	--
LSG 56	205	49	0.6	5	487	--	--
LSG 57	205	475	0.7	29	7	--	--
LSG 58	205	186	0.2	10	2	--	--
LSG 59	205	295	0.6	16	<1	--	--
LSG 60	205	260	0.9	15	6	--	--
LSG 61	205	32	0.4	45	36	--	--
LSG 62	205	2	0.2	2	<1	--	--
LSG 63	205	125	0.6	73	6	--	--
LSG 64	205	228	0.4	9	<1	--	--
LSG 65	205	1	0.1	88	<1	--	--
LSG 66	205	2	0.1	135	4	--	--
LSG 67	205	15	0.9	180	6	--	--
LSG 68	205	1	0.4	46	1	--	--
LSG 69	205	21	0.1	5	4	--	--
LSG 70	205	17	0.1	3	<1	--	--
LSG 71	205	23	0.1	3	<1	--	--
LSG 72	205	20	0.1	2	<1	--	--
LSG 73	205	37	0.3	4	<1	--	--
LSG 74	205	69	0.2	4	1	--	--
LSG 75	205	44	0.4	4	<1	--	--
LSG 76	205	42	1.6	3	<1	--	--
LSG 77	205	33	0.2	3	<1	--	--
LSG 78	205	68	0.3	16	<1	--	--
LSG 79	205	2	0.1	11	<1	--	--

BARWELL

NICHOLAS-DELIA

Certified by *Hart Buchler*





Chemex Labs Ltd.

Analytical Chemists • Geochemists • Registered Assayers

212 Brooksbank Ave.
North Vancouver, B.C.
Canada V7J 2C1
Telephone: (604) 984-0221
Telex: 043-52597

*** INVOICE ***

To : DAWSON ELDORADO GOLD EXPL. LTD.
ATTN: PAUL S. WHITE
810 - 910 7th AVENUE, S. W.
CALGARY, ALTA.
T2P 3N8

Invoice # : 18414035 ✓
Date : 30-NOV-84
P.O. # : NONE
Project LONE STAR

Invoice for analytical work reported on certificate(s) A8414035-001 to -006

Quantity	Analysed for code description	unit price	amount
----------	----------------------------------	---------------	--------

223	013 - As ppm 101 - Au NAA ppb		
-----	----------------------------------	--	--

Sample preparation and other charges :

220	202 - -80 mesh, save reject		
3	203 - -35 mesh sieve + ring		

TOTAL : \$1875.60
=====

TERMS -- NET 30 DAYS
1.5 % per month (18 % per annum) charged on overdue accounts



Chemex Labs Ltd.

Analytical Chemists •• Geochemists •• Registered Assayers

212 Brooksbank Ave.
North Vancouver, B.C.
Canada V7J 2C1
Telephone: (604) 984-0221
Telex: 043-52597

*** INVOICE ***

To : DAWSON ELDORADO GOLD EXPL. LTD.
ATTN: PAUL S. WHITE
810 - 910 7th AVENUE, S. W.
CALGARY, ALTA.
T2P 3N8

Invoice # : I8414036
Date : 30-NOV-84
P.O. # : NONE
Project LONE STAR

Invoice for analytical work reported on certificate(s) A8414036-001 to -005

Quantity	Analysed for code description	unit price	amount
----------	----------------------------------	---------------	--------

200	013 - As ppm		
	101 - Au NAA ppb		

Sample preparation and other charges :

200	202 - -80 mesh, save reject		
-----	-----------------------------	--	--

TOTAL : \$1680.00 ✓
=====

TERMS -- NET 30 DAYS
1.5 % per month (18% per annum) charged on overdue accounts



Chemex Labs Ltd.

Analytical Chemists •• Geochemists •• Registered Assayers

212 Brooksbank Ave.
North Vancouver, B.C.
Canada V7J 2C1

Telephone: (604) 984-0221
Telex: 043-52597

*** INVOICE ***

To : DAWSON ELDORADO GOLD EXPL. LTD.
ATTN: PAUL S. WHITE
810 - 910 7th AVENUE, S. W.
CALGARY, ALTA.
T2P 3N8

Invoice # : F8418408

Date : 6-DEC-84

P.O. # : NONE

Project LONE STAR

Invoice for analytical work reported on certificate(s) A8418408-001

Quantity	Analysed for code description	unit price	amount
----------	----------------------------------	---------------	--------

1	396 - Au FA oz/T		
---	------------------	--	--

Sample preparation and other charges :

1	214 - Bag pulp		
---	----------------	--	--

TOTAL : \$ 6.00
=====

TERMS -- NET 30 DAYS

1.5 % per month (18 % per annum) charged on overdue accounts



Chemex Labs Ltd.

Analytical Chemists •• Geochemists •• Registered Assayers

212 Brooksbank Ave.
North Vancouver, B.C.
Canada V7J 2C1

Telephone: (604) 984-0221
Telex: 043-52597

*** INVOICE ***

To : DAWSON ELDORADO GOLD EXPL. LTD.
ATTN: PAUL S. WHITE
810 - 910 7th AVENUE, S. W.
CALGARY, ALTA.
T2P 3N8

Invoice # : I8414037

Date : 3-DEC-84
P.O. # : NONE
Project LONE STAR

Invoice for analytical work reported on certificate(s) A8414037-001

Quantity	Analysed for code description	unit price	amount
13	004 - Pb ppm		
	006 - Ag ppm		
	013 - As ppm		
	101 - Au NAA ppb		

Sample preparation and other charges :

13. 205 - Rock geochem - RING

TOTAL : \$154.96
=====

TERMS -- NET 30 DAYS

1.5% per month (18% per annum) charged on overdue accounts



Chemex Labs Ltd.

Analytical Chemists • Geochemists • Registered Assayers

212 Brooksbank Ave.
North Vancouver, B.C.
Canada V7J 2C1
Telephone: (604) 984-0221
Telex: 043-52597

*** INVOICE ***

To : DAWSON ELDORADO GOLD EXPL. LTD.
ATTN: PAUL S. WHITE
810 - 910 7th AVENUE, S.W.
CALGARY, ALTA.
T2P 3N8

Invoice # : I8418382
Date : 13-DEC-84
P.O. # : NONE
Project KLONDIKE

Invoice for analytical work reported on certificate(s) A8418382-001 to -002

Quantity	Analysed for code description	unit price	amount
71	004 - Pb ppm		
	006 - Ag ppm		
	013 - As ppm		
	101 - Au NAA ppb		
Sample preparation and other charges :			
71	205 - Rock geochem - RING		

TOTAL : \$846.32
=====

TERMS -- NET 30 DAYS
1.5 % per month (18 % per annum) charged on overdue accounts

ARCHER, CATHRO

● ASSOCIATES (1981) LIMITED

APPENDIX
C2

CONSULTING GEOLOGICAL ENGINEERS

1016-510 WEST HASTINGS STREET
VANCOUVER, B. C. V6B 1L8

(604) 688-2568

In Account With
Dawson Eldorado Gold Exploration Ltd.
January 31, 1985

Re: Lone Star

Consulting Fees

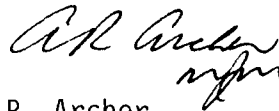
R.J. Cathro - 1 3/4 days December-January obtaining and plotting geochem assays and preparing report	\$ 787.50
M.P. Phillips - 1/2 day getting soil samples from storage, packing and shipping to Chemex	150.00

Expenses

CP Air - freight	\$463.54	
Receiver General, maps	2.00	
Xeroxing	7.25	
Drafting, 1 hour at \$25/hr	25.00	
Telephone	25.68	
Purolator Courier	7.25	
Western Repro, map prints	36.23	
CP Air - freight	33.50	<u>600.45</u>
		<u>\$1,537.95</u>

Respectfully submitted,

ARCHER, CATHRO & ASSOCIATES (1981) LIMITED



A.R. Archer

/mjm

AVANTI MINERALS LTD.
Suite 810, 910 - 7th Ave. S.W.
Calgary, Alberta
T2P 3N8

December 31, 1984

STATEMENT OF ACCOUNT

WITH: DAWSON ELDORADO GOLD EXPLORATIONS LTD.
Calgary, Alberta

TO: Charges in setting up program for
Geochemical Program and Geological
Mapping over previously unexplored
areas on Lone Star Program 1984.

Charges for Expediting, Communications
Compilation, Reproductions of Maps,
and Travel connected with Supervision
of 1984 Program:

Total Charges\$5000.00

Paid Received 31 Dec., 1984
AVANTI MINERALS LTD.



Paul S. White, President

APPENDIX "D"

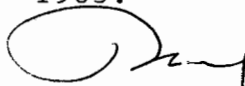
CERTIFICATE OF EXPENDITURES

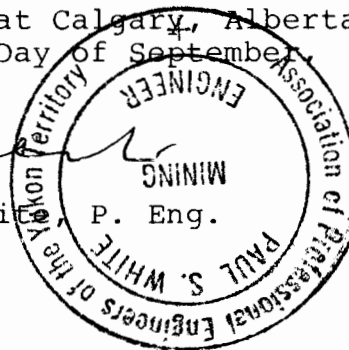
I, PAUL S. WHITE, Professional Engineer, of the City of Calgary in the Province of Alberta, do herewith Certify that I caused to be expended in excess of \$25,000 on the Lone Star property, Dawson Mining District, Yukon Territory, as described in the accompanying Report of even date, between the dates of June 1st, 1984 and January 31, 1985.

The subject work of Line Cutting, geological mapping, adit portal restoration, soil sampling and prospecting, was performed by the following groups, under the supervision of Archer, Cathro & Associates Ltd., Professional Geological Engineers:

United Keno Hill Mines Ltd.	>\$10,000	
Archer, Cathro & Associates Ltd.	> 7,500	
Chemex Labs Ltd.	> 11,000	4562.88 pw
Dawson Eldorado Mines Ltd.	> 5,000	
Avanti Minerals Ltd.	5,000	30/11/85

Certified at Calgary, Alberta
this 16th Day of September,
1985.


Paul S. White P. Eng.





DAWSON ELDORADO MINES LTD.

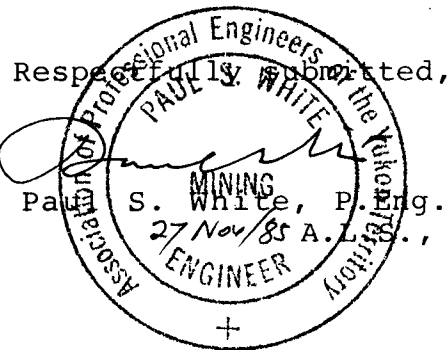
Suite 810, 910 - 7th Ave. S.W., Calgary, Alberta T2P 3N8 (403) 269-2122

November 27, 1985

CERTIFICATE

I, **PAUL S. WHITE**, with business addresses in Whitehorse, Yukon Territory, and Calgary, Alberta, and residential addresses at Whitehorse and Calgary, do hereby declare that:

- 1) I am a 1956 graduate of the University of British Columbia in Applied Science (Mining Engineering).
- 2) I am and have been continuously registered as a Professional Engineer in both Alberta (since 1959) and Yukon Territory (since 1964).
- 3) I have been engaged in mining, mineral exploration and evaluation, and mineral resource development in Northern Canada since 1959. Since 1979, I have been the President of Dawson Eldorado Mines Ltd., as Chief Executive Officer, Director and minerals manager.
- 4) I have had 6 years experience and full access to previous data on the Lone Star Property.
- 5) I am the largest single shareholder of Dawson Eldorado Mines Ltd., which owns 100% of the property referred to in this Report, and otherwise have no direct interest in the properties or companies referred to in this Report.



Paul S. White, P. Eng. (Mining), B.A.Sc.,
A.L.S., C.L.S.