

# ASSESSMENT REPORTS

Box # 2  
WATSON LAKE M.D.

MAP No. 105 F 10 TYPE OF WORK: GEOPHYSICAL, GEOLOGICAL, GEOCHEMICAL

REPORT FILED UNDER	COMINCO LTD.	
DATE PERFORMED	30 June - 5 July, 1985	DATE FILED: 27 September 1985
LOCATION - LAT.	61°33'N	
LONG.	132°40'W	
CLAIM Nos.	TAY	1-21 YA71482-YA71502
	LP	7-63 YA72530-YA72586
WORK DONE BY	COMINCO LTD.	
WORK DONE FOR	COMINCO LTD.	
REMARKS	<p>The property is underlain by flat lying Cambro-Ordovician quartzite, quartz-biotite-muscovite schist and banded limestone. East of the property, these rocks are in thrust fault contact with Devono-Mississippian shales, volcanics and syenites. A plug of quartz monzonite lies to the west.</p> <p>Mineralization on the property consists of boulders of quartz and pyrrhotite + chalcopyrite + galena + arsenopyrite. The mineralization is a replacement of schistose rocks.</p> <p style="text-align: right;">10x 85 p. 127</p>	

091674

The 1985 work program consisted of geological mapping, soil and silt sampling, linecutting and grid establishment, airborne EM and magnetic geophysical surveys and diamond drilling.

A total of 40.8 km of linecutting was done. Soil and silt sampling detected a weak Cu, Au anomaly which coincides with float mineralization.

The airborne geophysical surveys consisted of 161 line km flown by helicopter. A large area of strong, sub-parallel conductors was defined near the eastern edge of the claims.

Drilling was done over coincident EM, magnetic and geochemical anomalies. A total of 532.8m of drilling was done in five holes. The best value was 2.8 g/t Au over 4.9m in DDH 85-1.

COMINCO LTD.

EXPLORATION

NTS: 105F/10



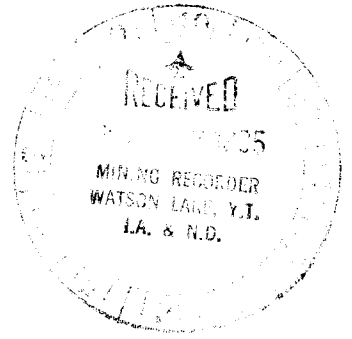
AIRBORNE GEOPHYSICAL SURVEYS

ON THE

TAY AND LP CLAIMS

PELLY MOUNTAINS

WATSON LAKE M.D., YUKON TERRITORY



Latitude : 61°33'N

Longitude : 132°40'W

Field Work Performed : June 30 - July 5, 1985

Claims : TAY 1-21, LP 7-63


- ASSESSMENT REPORT -

*[Faint, illegible text, possibly bleed-through from the reverse side of the page]*

SEPTEMBER 1985

J. KLEIN  
*[Faint, illegible text]*  
091674

This report has been examined by  
the Geological Evaluation Unit  
under Section 53 (4) Yukon Quartz  
Mining Act and is allowed as  
representation work in the amount  
of \$ 16,650.

  
Regional Manager, Exploration and  
Geological Services for Commissioner,  
of Yukon Territory.

## TABLE OF CONTENTS

INTRODUCTION	1
LOCATION AND ACCESS	1
CLAIMS	1
GEOPHYSICAL EQUIPMENT	1
DATA PRESENTATION	2
DESCRIPTION OF RESULTS	3
RECOMMENDATIONS	3
APPENDIX A - STATEMENT OF EXPENDITURES	
APPENDIX B - AFFIDAVIT	
APPENDIX C - STATEMENT OF QUALIFICATIONS	
FIGURE 1 - LOCATION MAP	
FIGURE 2 - CLAIM MAP AND SURVEY LINES	
PLATE 286-85-1	Coax 932 Hz Profiles Along NW-SE Lines Vertical Scale 1 mm = 2 ppm Scale 1:10,000
286-85-2	Coax 4600 Hz Profiles Along NW-SE Lines Vertical Scale 1 mm = 2 ppm Scale 1:10,000
286-85-3	Coplanar 4186 Hz Profiles Along NW-SE Lines Vertical Scale 1 mm = 8 ppm Scale 1:10,000
286-85-4	Coax 932 Hz Profiles Along E-W Lines Vertical Scale 1 mm = 2 ppm Scale 1:10,000
286-85-5	Coax 4600 Hz Profiles Along E-W Lines Vertical Scale 1 mm = 2 ppm Scale 1:10,000
286-85-6	Coplanar 4186 Hz Profiles Along E-W Lines Vertical Scale 1 mm = 8 ppm Scale 1:10,000
286-85-7	Magnetic Contours for NW-SE and E-W Lines Scale 1:10,000

COMINCO LTD.

EXPLORATION

WESTERN DISTRICT

NTS: 105F/10

AIRBORNE GEOPHYSICAL SURVEYS  
ON THE  
TAY AND LP CLAIMS

INTRODUCTION

An airborne electromagnetic and magnetic survey was conducted during the period June 30 - July 5, 1985, over the TAY-LP claims. A total of 161 line kilometres of survey was flown under contract by Aerodat Ltd. of Toronto.

The purpose of the survey was to map the area for conductors and magnetic bodies.

LOCATION AND ACCESS

The property is located in the Pelly Mountains on the east side of Seagull Creek about 50 km south-southwest of Ross River and 26 km east of the Canol Road (Fig. 1). Access is provided by four-wheel drive vehicle along a road starting from the junction of the South Canol Road and Groundhog creeks. The elevation difference of the survey areas is 1,800' (from 3,700' to 5,500').

CLAIMS

The claims covered by this airborne survey are TAY 1 to 21 and LP 7 to 63. The claims are shown together with the survey lines on Fig. 2.

GEOPHYSICAL EQUIPMENT

The geophysical equipment was installed in a helicopter and consists of the following:-

Aerodat HEM System

The Aerodat 3-frequency HEM system has two coaxial coil pairs and one coplanar coil pair, all at a separation of 7 metres. In-phase and quadrature response are measured. The two coaxial coil pairs are operated at 932 and 4600 Hz and the coplanar coil at 4186 Hz.

### Airborne Magnetometer

A Geometrics G-803 magnetometer was used to record the total magnetic field. The instrument was operating at 1 gamma sensitivity.

Together with this basic equipment, the following auxilliary equipment was used:-

- A Hoffman HRA 100 altimeter
- A Geocam 35mm Tracking Camera
- A RMS GR-33 Dot Matrix Analogue Recorder
- Base Station Magnetometer

The survey was flown at an average air speed of 130 km/hr and in two directions (Fig. 2) to permit the detection of conductors with different strike. Line spacing was 200 m with the electromagnetic sensor being towed approx. 30-40 m above the ground surface.

The crew consisted of a senior operator/navigator, an operator assistant, a pilot and a helicopter engineer. The survey was flown out of Ross River.

### DATA PRESENTATION

The results are shown on seven plates (286-85-1 to 7) on a scale of 1:10,000 as follows:-

Plate 286-85-1	Coax 932 Hz Profiles Along NW-SE Lines Vertical Scale 1 mm = 2 ppm
286-85-2	Coax 4600 Hz Profiles Along NW-SE Lines Vertical Scale 1 mm = 2 ppm
286-85-3	Coplanar 4186 Hz Profiles Along NW-SE Lines Vertical Scale 1 mm = 8 ppm
286-85-4	Coax 932 Hz Profiles Along E-W Lines Vertical Scale 1 mm = 2 ppm
286-85-5	Coax 4600 Hz Profiles Along E-W Lines Vertical Scale 1 mm = 2 ppm
286-85-6	Coplanar 4186 Hz Profiles Along E-W Lines Vertical Scale 1 mm = 8 ppm
286-85-7	Magnetic Contours for NW-SE and E-W Lines

DESCRIPTION OF RESULTS

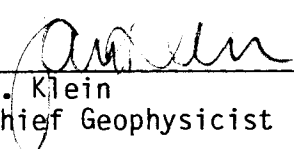
A large area of nearly parallel conductors was detected near the eastern end of the E-W lines grid. The obliqueness of the NW-SE lines to these conductors causes the responses along the latter lines to be less continuous. The coplanar coil system shows more extensive conductivity, mainly in the out-of-phase channel reflecting most likely an overburden conductivity.

The magnetic results show a quiet relief in the western part of the grid area. Several highs were detected in the east, some of which correlate with the conductors.


RECOMMENDATIONS

It is recommended to conduct mapping and prospecting near the conductors detected. Ground geophysical work should be executed in the event economic interesting sources can be correlated with these conductors.

Report by:

  
 J. Klein  
 Chief Geophysicist

Approved for  
Release by:

  
 G. Harden  
 Manager, Exploration  
 Western District

## Distribution:

Mining Recorder	(2)
Western District	(1)
Geophysics	(1)

APPENDIX A

STATEMENT OF EXPENDITURES

TAY AND LP CLAIMS

JUNE 30 - JULY 5, 1985

Airborne EM/Mag. Survey:-

161 km @ \$ 64.00/km

\$ 10,304.00

TOTAL

\$ 10,304.00

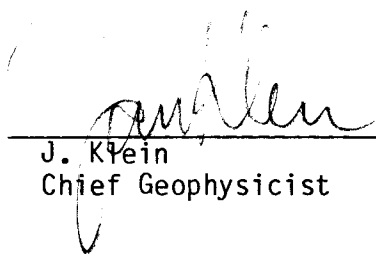
APPENDIX B

A F F I D A V I T

I, JAN KLEIN, OF THE CORPORATION OF RICHMOND, IN THE PROVINCE OF BRITISH COLUMBIA, MAKE OATH AND SAY:-

- 1) THAT I am employed as a geophysicist by Cominco Ltd., and as such have a personal knowledge of the facts to which I hereinafter depose;
- 2) THAT the annexed hereto and marked as "Appendix A" to this statement is a true copy of expenditures incurred on geophysical survey on the TAY and LP mineral claims;
- 3) THAT the said expenditures were incurred for the purpose of mineral exploration of the above-noted claims between 30th day of June and the 5th day of July, 1985.

Signed: \_\_\_\_\_

  
J. Klein  
Chief Geophysicist

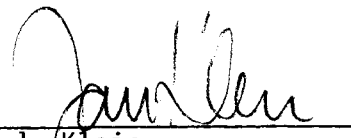
APPENDIX C

STATEMENT OF QUALIFICATIONS

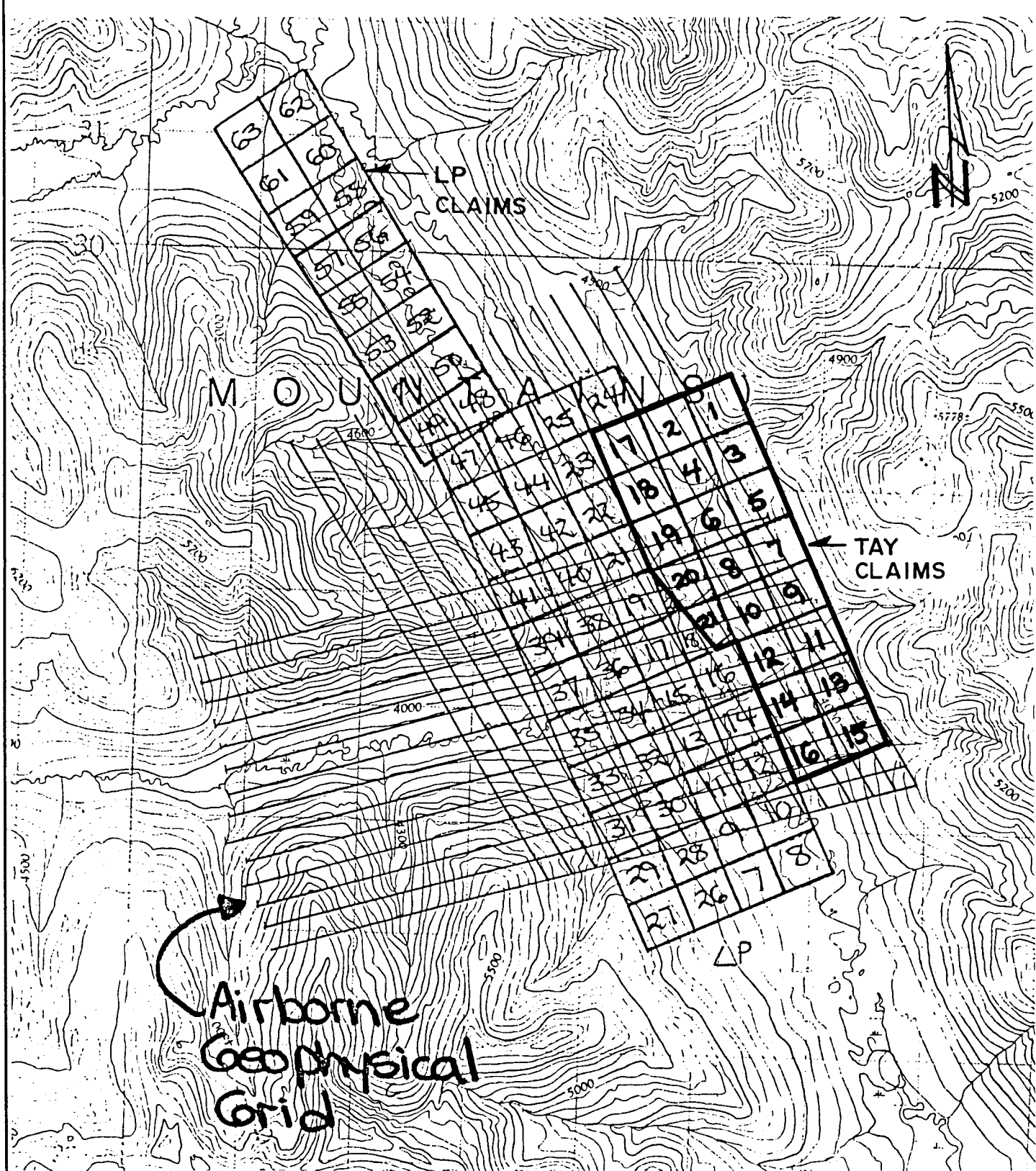
I, JAN KLEIN, of the Corporation of Richmond, in the Province of British Columbia, do hereby certify:-

- 1) THAT I am a geophysicist residing at 4371 Coventry Drive, Richmond, British Columbia, with a business address at 853 - 409 Granville Street, Vancouver, British Columbia.
- 2) THAT I graduated from the Technological University of Delft, Netherlands in 1965 with a M.Sc. in Geophysics.
- 3) THAT I have practiced geophysics for the past twenty years.

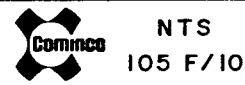
Signed:

  
\_\_\_\_\_  
J. Klein  
Chief Geophysicist





# TAY - LP CLAIMS

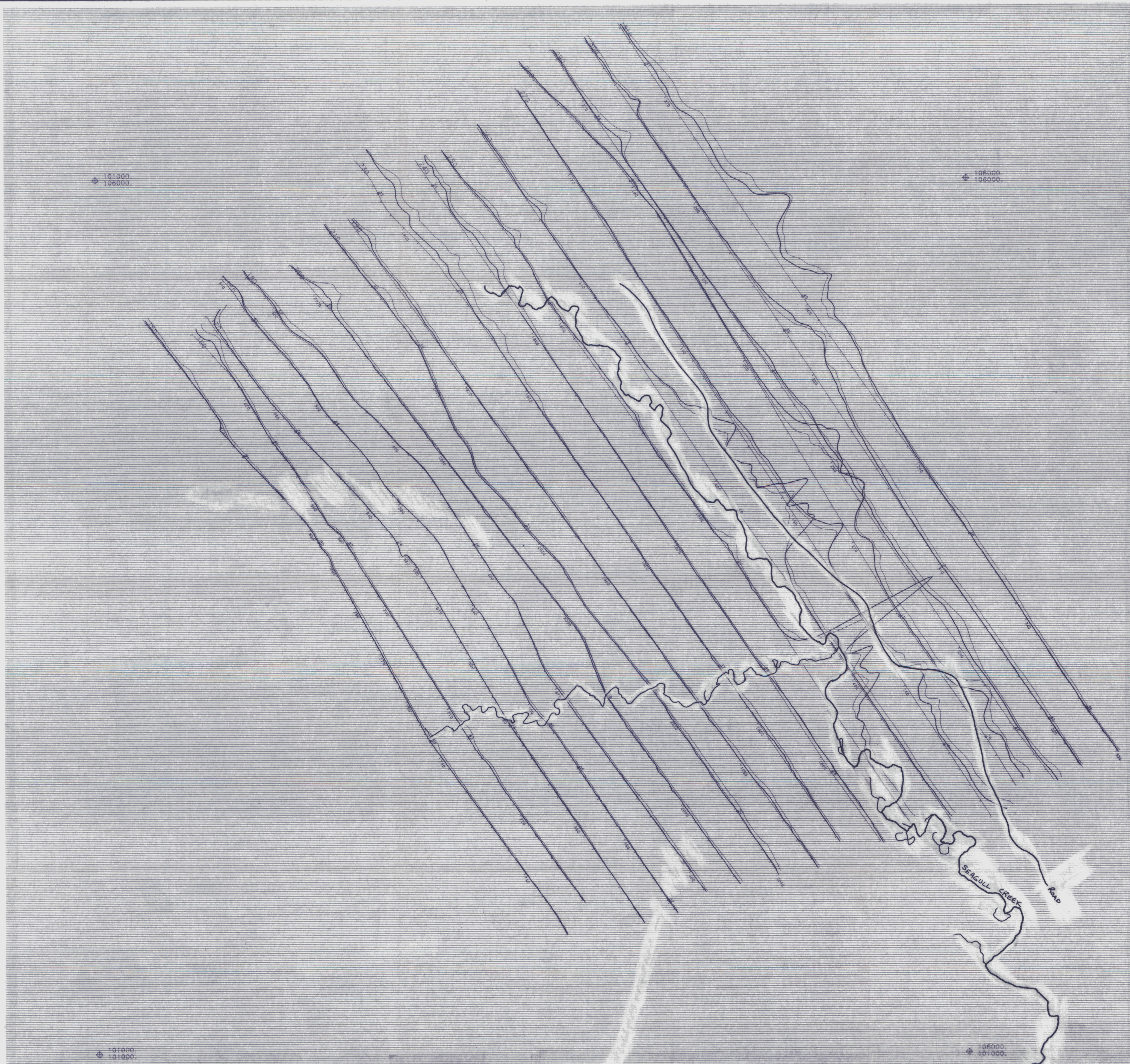


Drawn by:		Traced by:	
Revised by	Date	Revised by	Date

CLAIM MAP and SURVEY LINES

WATSON LAKE M.D.; YUKON

Scale: 1 : 50,000      Date: SEPTEMBER 1985      Figure: 2



091674



VERTICAL SCALE : 1 mm = 2 ppm



**TAY - LP CLAIMS**

NTS  
105 F/10

Drawn by:	Traced by:
Revised by:	Revised by:
Date:	Date:

AIRBORNE EM  
COAXIAL COILS  
932 Hz

WATSON LAKE MD, YUKON

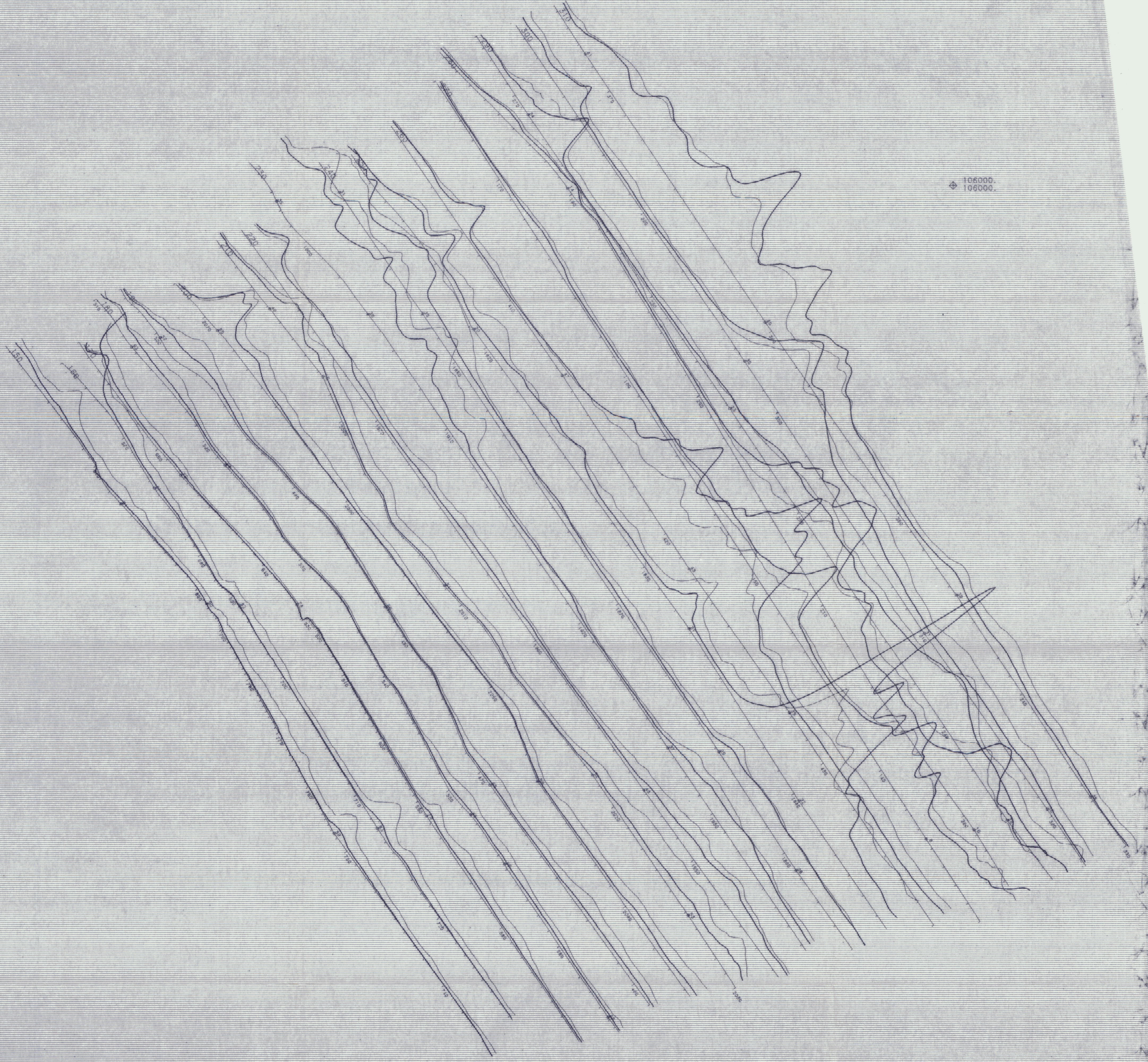
Scale: 1:10,000 Date: SEPTEMBER 1985 Plate: 286-85-1

101000.  
106000.

106000.  
106000.

101000.  
101000.

106000.  
101000.



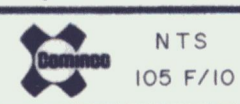
091674



VERTICAL SCALE : 1 mm = 2 ppm



### TAY - LP CLAIMS



NTS  
105 F/10

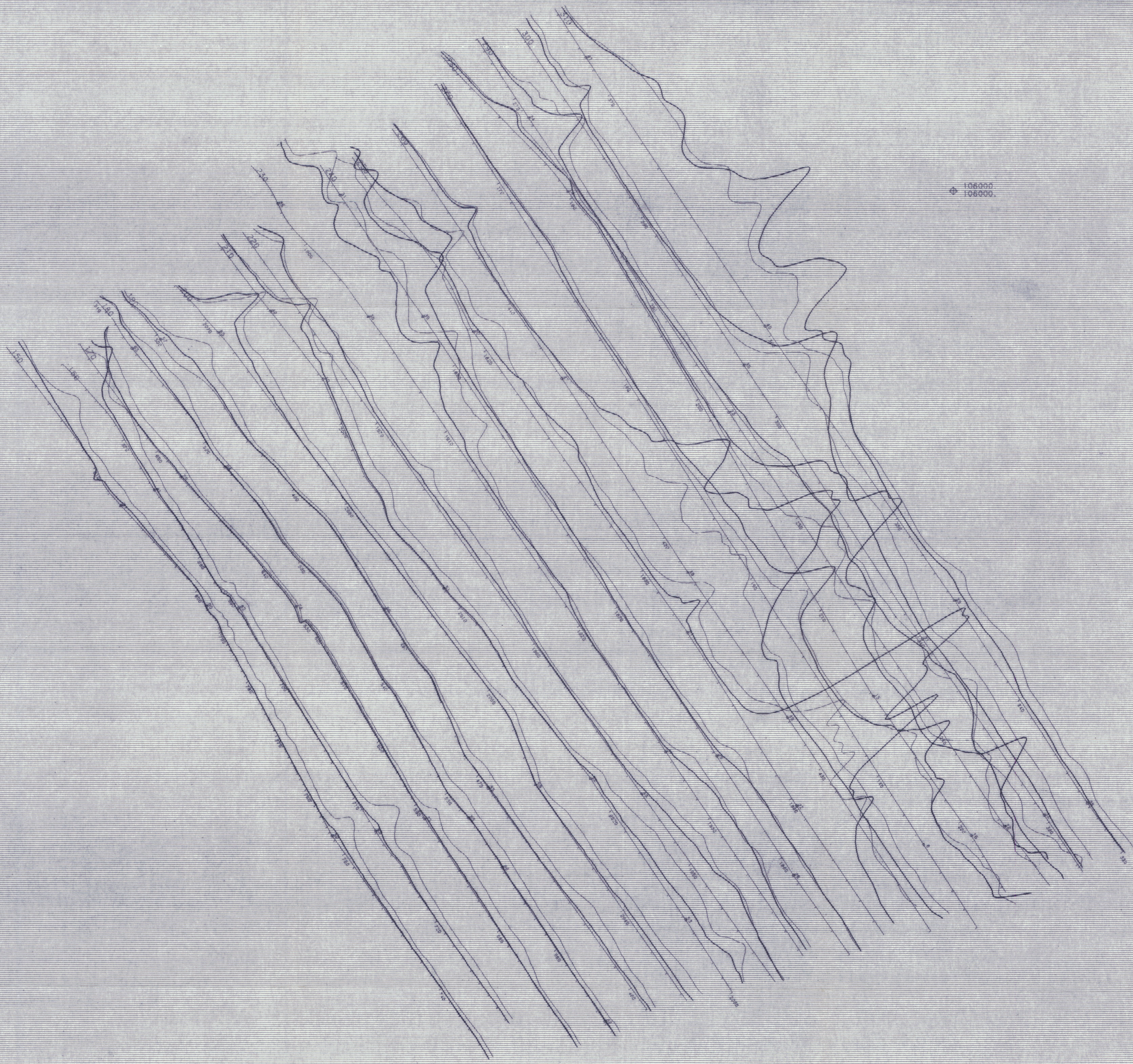
Drawn by:		Traced by:	
Revised by	Date	Revised by	Date

AIRBORNE EM  
COAXIAL COILS  
4600 Hz  
WATSON LAKE M.D., YUKON

Scale: 1:10,000    Date: SEPTEMBER 1985    Plate: 286-85-2

101000  
106000

106000  
101000



101000  
101000

106000  
101000

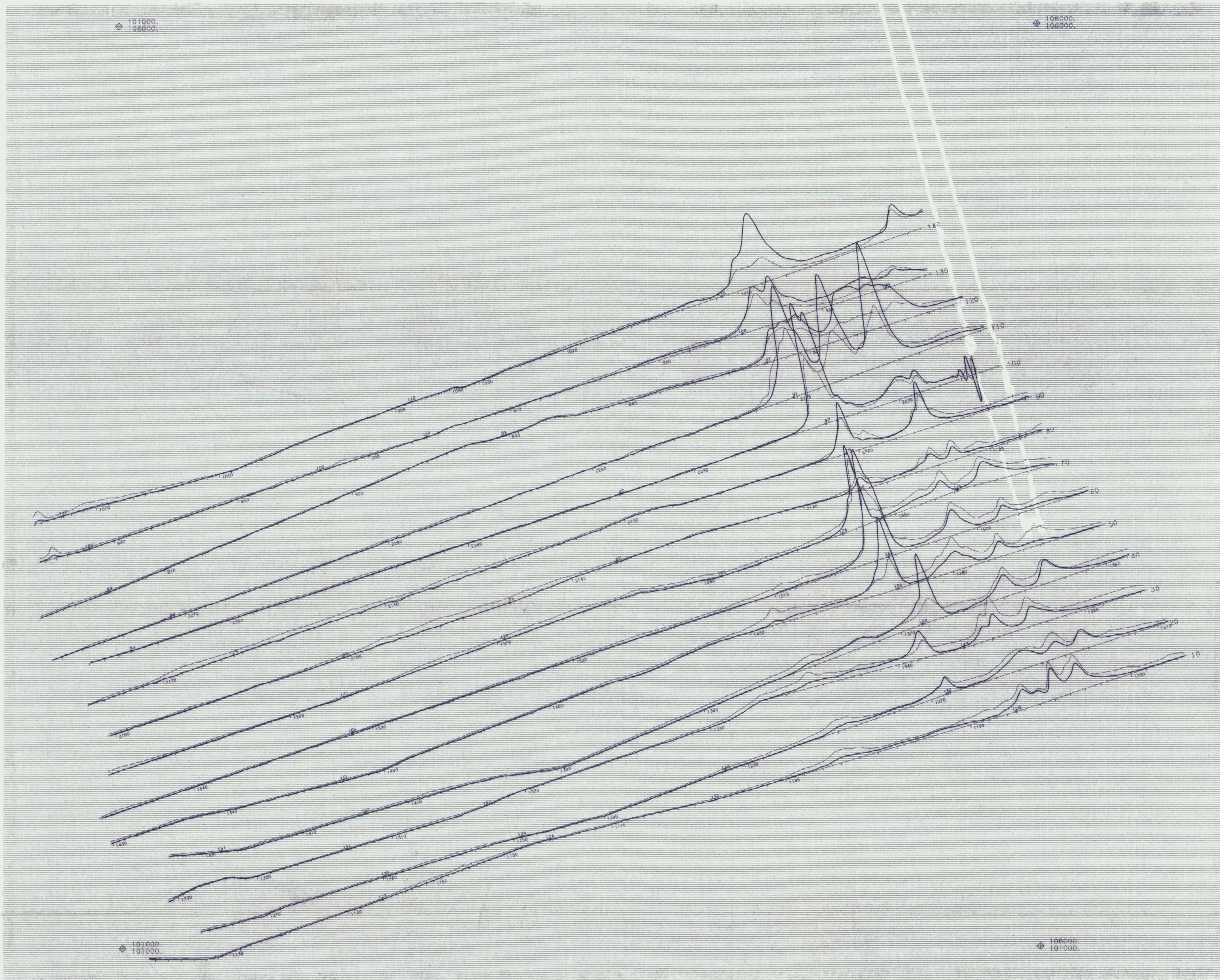
091674



VERTICAL SCALE : 1 mm = 8 ppm



<b>TAY - LP CLAIMS</b>				NTS 105 F/10
Drawn by:	Traced by:			AIRBORNE EM COPLANAR COILS 4186 Hz
Revised by	Date	Revised by	Date	
				WATSON LAKE M.D.; YUKON
Scale: 1 10,000		Date: SEPTEMBER 1985		Plate: 286-85-3



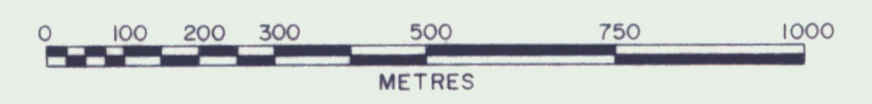
101000.  
106000.

106000.  
106000.

101000.  
101000.

106000.  
101000.

VERTICAL SCALE : 1 mm = 2 ppm



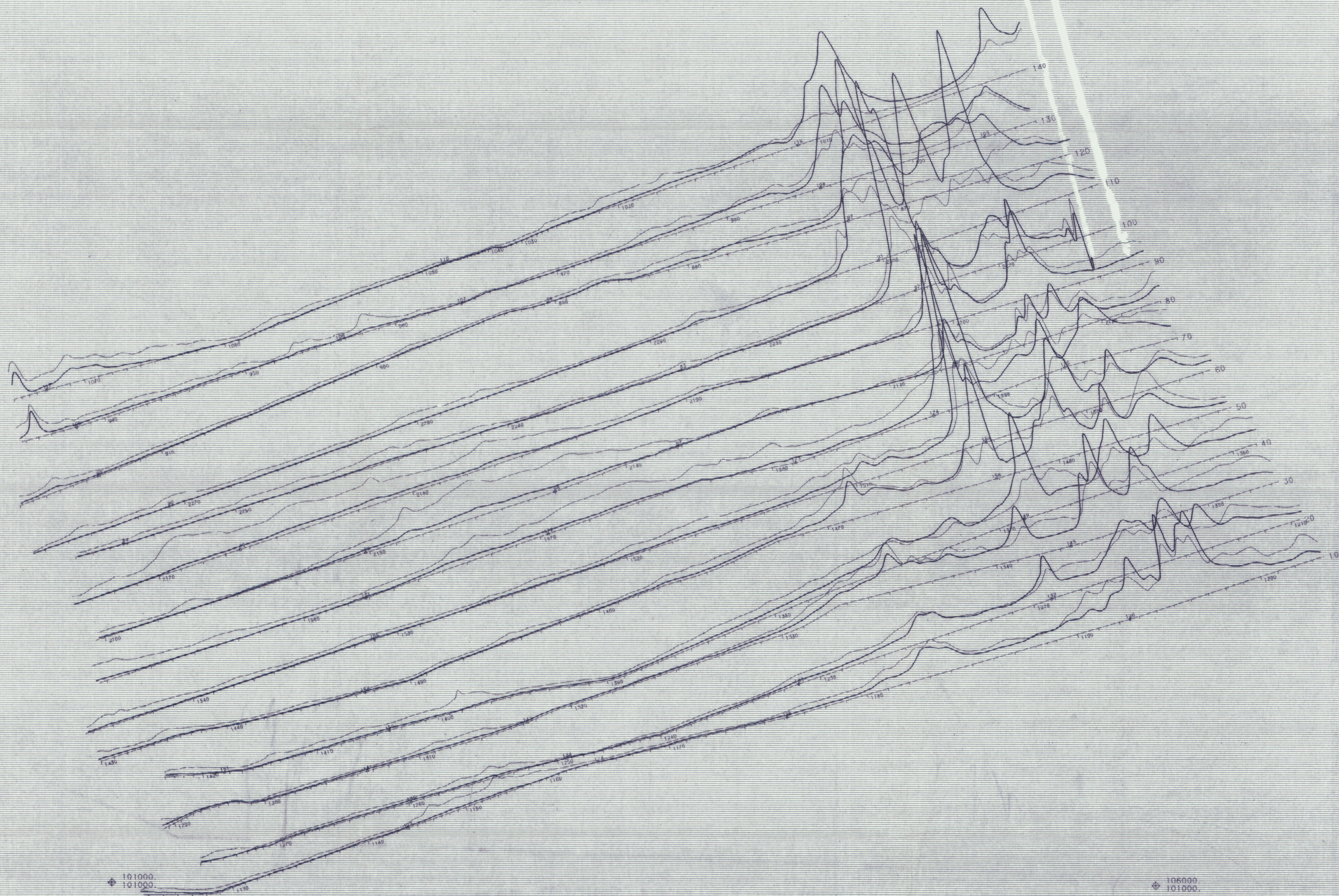
091674

Drawn by:		Traced by:		<b>TAY - LP CLAIMS</b> AIRBORNE EM COAXIAL COILS 932 Hz WATSON LAKE M.D., YUKON	
Revised by:	Date:	Revised by:	Date:		
				Scale:	1 : 10,000
				Date:	SEPTEMBER 1985
				Plate:	286-85-4



101000  
106000

106000  
101000



101000  
101000

106000  
101000

VERTICAL SCALE : 1 mm = 2 ppm



091674

### TAY - LP CLAIMS

NTS  
105 F/10

Drawn by:	Traced by:
Revised by	Revised by
Date	Date

AIRBORNE EM  
COAXIAL COILS  
4600 Hz

WATSON LAKE M.D.; YUKON

Scale: 1 : 10,000

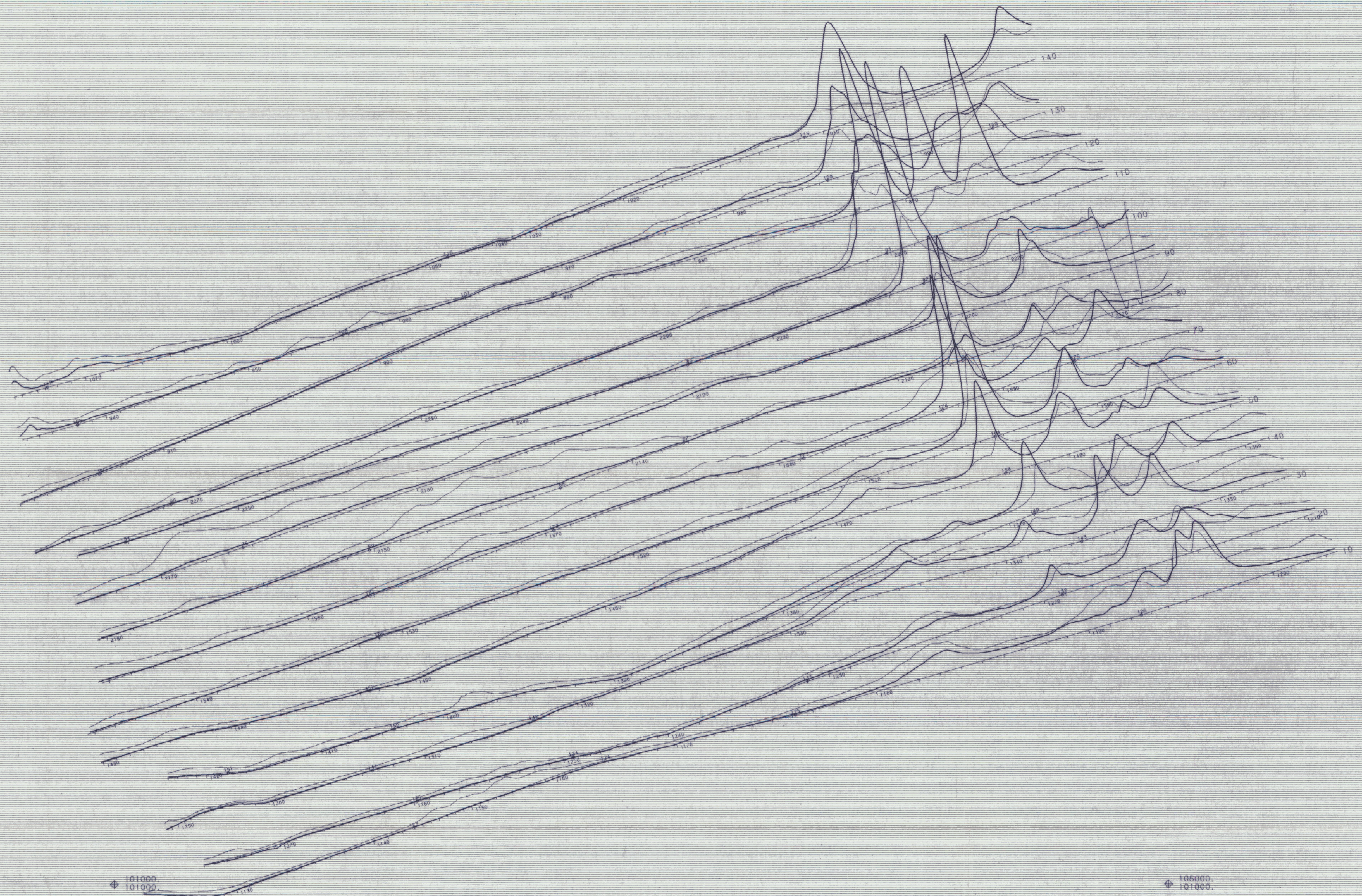
Date: SEPTEMBER 1985

Plate: 286-85-5



101000.  
106000.

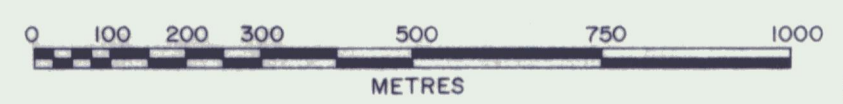
106000.  
108000.



101000.  
101000.

106000.  
101000.

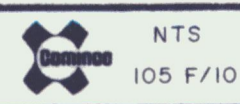
VERTICAL SCALE : 1 mm = 8 ppm



091674



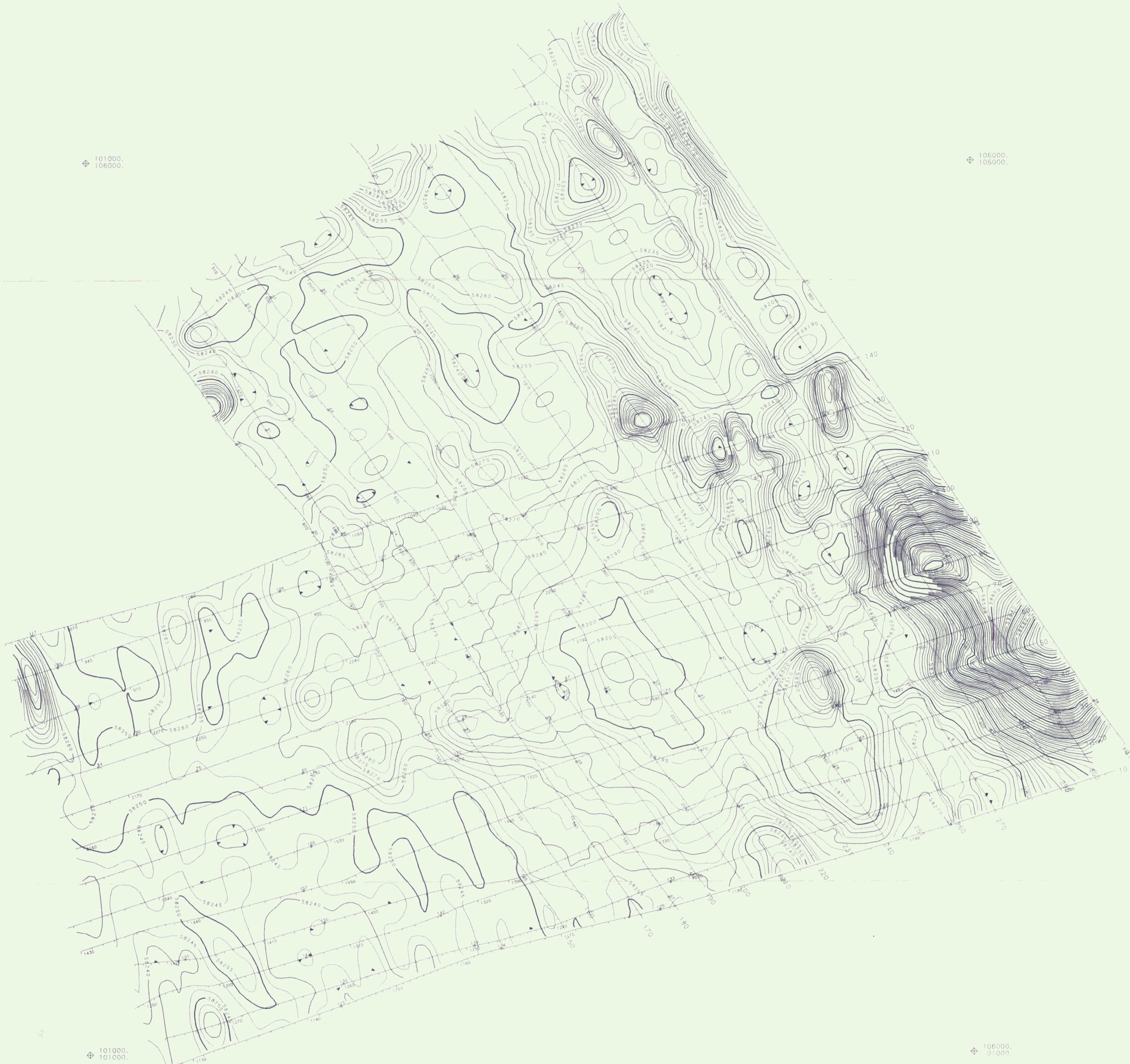
Drawn by:		Traced by:		AIRBORNE EM COPLANAR COILS 4186 Hz	
Revised by	Date	Revised by	Date		
				WATSON LAKE M.D., YUKON	
Scale: 1 : 10,000		Date: SEPTEMBER 1985		Plate: 286-85-6	



NTS  
105 F/10

101000.  
106000.

106000.  
106000.



101000.  
101000.

106000.  
01000.

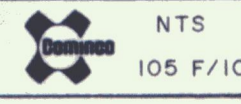


CONTOUR INTERVAL : 5 gamma



091674

### TAY - LP CLAIMS



NTS  
105 F/10

MAGNETIC CONTOURS

WATSON LAKE M.D.; YUKON

Drawn by:	Traced by:
Revised by:	Revised by:
Date:	Date:

Scale: 1:110,000 Date: SEPTEMBER 1985 Plate: 286-85-7

COMINCO LTD.

EXPLORATION

WESTERN DISTRICT

NTS: 105 F/10



ASSESSMENT REPORT

GEOLOGICAL MAPPING AND GEOCHEMICAL SAMPLING

CARRIED OUT ON TAY AND LP CLAIMS



LATITUDE: 61°33'N

LONGITUDE: 132°38'W

PERIOD OF FIELD WORK

JULY 9 TO JULY 15, 1985

SEPTEMBER 19, 1985

I.A. PATERSON

091674

~~091674~~

TABLE OF CONTENTS

	<u>Page</u>
I. SUMMARY . . . . .	1
II. INTRODUCTION . . . . .	1
III. LOCATION AND ACCESS . . . . .	1
IV. TOPOGRAPHY AND VEGETATION . . . . .	1
V. TENURE . . . . .	2
VI. GEOLOGY . . . . .	2
VII. MINERALIZATION . . . . .	3
VIII. GEOCHEMISTRY . . . . .	3
IX. RECOMMENDATIONS . . . . .	4
X. REFERENCES . . . . .	4

APPENDICES

- APPENDIX I - Exhibit A: Statement of Expenditures
- APPENDIX II - Exhibit B: Statement of Qualifications
- APPENDIX III - Exhibit C: Statement

LIST OF FIGURES AND PLATES

- FIGURE 1 - Location Map, LP and Tay Claims
  
- PLATE 1 - Claim Map, LP 7 to 63, Tay 1-21; 1" = 1/2 mile
- PLATE 2a - Geology, Distribution of Mineralized Boulders and Geochemical Sample Locations (1:5000)
- PLATE 2b - Geochemistry; Au, As (1:5000)
- PLATE 2c - Geochemistry; Cu, Bi (1:500)

EXPLORATION  
NTS: 105 F/10

COMINCO LTD.

WESTERN DISTRICT  
19 September 1985

ASSESSMENT REPORT

GEOLOGICAL MAPPING AND GEOCHEMICAL SAMPLING

CARRIED OUT ON TAY AND LP CLAIMS

DURING PERIOD JULY 9-21, 1985

I. SUMMARY

The property is underlain by banded crystalline limestone and quartz + muscovite ± chlorite ± biotite schists of possible Cambro-Ordovician age and is traversed by the Seagull Creek fault which juxtaposes these rocks against Devonian-Mississippian shales and siltstone on the eastern side of the property. An altered quartz monzonite intrusive with associated garnet + diopside skarn is present in the valley floor.

A number of boulders containing quartz + pyrrhotite ± chalcopyrite ± galena ± arsenopyrite have been located along the road which runs down the east side of Seagull Creek. As some of these boulders contain Au values, a soil silt geochemical survey was carried out along the road which traverses the property. An anomalous region showing low Au and Cu values was found. This area corresponds approximately to the distribution of the mineralized boulders. Arsenic showed no obvious correlation with boulder distribution.

II. INTRODUCTION

The Tay claims (1-21) were staked in July 1984 by three prospectors from Faro. The LP claims (7-63) were added by Cominco in November and the Tay property was optioned by Cominco from Messrs. Long, Schnare and Bartsch in the spring of 1985.

Work commenced on the property in June 1985 when an airborne magnetometer and electromagnetic survey was flown by Aerodat Ltd. of Mississauga, Ontario. Subsequently a Cominco crew comprised of I.A. Paterson, M.J. Gray and M.E. Baknes (all of business address - 7th Floor, 409 Granville Street, Vancouver, B.C., V6C 1T2) carried out geological and geochemical work between 9th and 21st July, 1985.

III. LOCATION AND ACCESS

The LP and Tay claim group are located 165 km northeast of Whitehorse and 60 km south-southwest of Ross River. The claims can be reached by helicopter from Whitehorse, or floatplane to Seagull Lake. A four-wheel drive road connects the property with Seagull Lake (9.5 km) and the South Canal road (30 km, 1.5 hour drive). Chains and a winch may be necessary in places.

IV. TOPOGRAPHY AND VEGETATION

The claims are located in the valley and on the flanks of Seagull Creek. Elevation of the valley floor is between 1100 and 1150 metres. Mountains on either side rise to 1900 m.

Rock exposure is generally poor as much of the valley floor is covered with a mantle of fluvio-glacial material or river-gravels. Some rock exposures are present on the banks of Seagull Creek.

The valley floor is flat and generally covered with muskeg, willow or alder. Seagull Creek meanders along the valley creating numerous sloughs, gravel banks and ponds along its length. Between elevations 1150 and 1450 m the flanks of the valley are forested with Northern Black Spruce and dwarf birch. Above 1450 m alpine vegetation is present.

#### V. TENURE

The Tay and LP claims (Plate 1) are held by Cominco under option from Peter Long, Jim Schnare and Ted Bartsch formerly from Faro and now residing in Ontario, Victoria, B.C. and Whitehorse respectively.

<u>CLAIM</u>	<u>RECORD NO.</u>	<u>DUE DATE</u>
Tay 1-21	YA71482-YA71502	August 1, 1985
LP 7-63	YA72530-YA72586	December 7, 1985

#### VI. GEOLOGY

The northwesterly trending Seagull Creek Fault bisects the property (Plate 2a). This fault juxtaposes Cambro-Ordovician recrystallized limestone and schist to the west against Devono-Mississippian black siltstone, phyllites and volcanics to the east. The fault has been mapped as a thrust (Templeman-Kluit, 1977).

Cambro-Ordovician (or older) rocks underlie the greater part of the claim group. They consist of a flat-lying sequence of buff weathering banded crystalline limestone, locally interfoliated with greenish quartz + muscovite ± chlorite ± magnetite schists or grey phyllites. The other main rock type is quartz + muscovite ± biotite schist. Its relationship to the buff limestone is not known.

The Cambro-Ordovician(?) rocks have been penetratively deformed and metamorphosed in the upper greenschist facies. The S<sub>1</sub> foliation parallels the axis of recumbent isoclinal folds and is defined by parallel orientation of muscovite and chlorite. This foliation is cut by a fracture cleavage (160-175° trend, steep dip) well exposed in outcrop along the banks of Seagull Creek. Kink folds are parallel to a crenulation lineation.

The Cambro-Ordovician(?) rocks have been intruded by a plug of biotite quartz monzonite well exposed on the mountain to the west of the Tay claims. The intrusive at this locality has undergone pervasive sericitic alteration. Down in the valley of Seagull Creek garnet diopside skarn rocks are found in close association with large blocks of quartz monzonite containing quartz + muscovite veins.

The Devono-Mississippian rocks are poorly exposed. Angular float consisting of grey siltstone, black chert, grey black phyllite or slate and dark grey limestone is found in the southern part of the property where the road crosses the Seagull Fault. In the southeastern part of the claim group the Devono-Mississippian shales have been intruded by a medium-grained hornblend syenite containing disseminated magnetite.

## VII. MINERALIZATION

Attention was drawn to this area with the discovery of a number of gossaned boulders lying beside the road along the east bank of Seagull Creek. These boulders are composed of:

- a) quartz + muscovite + biotite schist with pyrrhotite + quartz on fractures
- b) quartz + pyrrhotite ± chalcopyrite ± pyrite ± arsenopyrite ± galena ± sphalerite

The boulders are up to 1 m in diameter and vary from being well rounded to angular.

It is possible that some of these boulders may have been transported by glaciers advancing southwards along the valley of Seagull Creek. Similar boulders have been reported 4 km further north on the former Anise claims (assessment report 090200, P. Dean). It is also considered possible that some of the boulders could have a local source beneath the glacial overburden in the Tay or LP claims.

## VIII. GEOCHEMISTRY

A series of soil and silt samples were taken along the roadside to check if there was a geochemical halo associated with the mineralized boulders. A total of 84 soil samples were taken from various horizons in glacial till and fluvio-glacial material exposed along road cuts. Where possible, samples were taken at 50 m intervals. Eight silt samples were also taken from creeks traversing the road.

Samples were dried and sieved to -80 mesh fraction and analysed by the Cominco Exploration Laboratory in Vancouver for Au, As, Cu, Bi. Details of the analytical techniques are as follows:

Au: 10 gm sample/aqua regia decomposition/solvent extraction/atomic absorption  
 As: pyrosulphate fusion/colorimetric  
 Cu: 20%  $\text{NNO}_3$  decomposition/atomic absorption  
 Bi: 20%  $\text{NNO}_3$  decomposition/atomic absorption

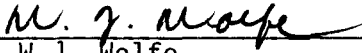
Results are shown in Plates 2b and 2c. The following observations can be made:

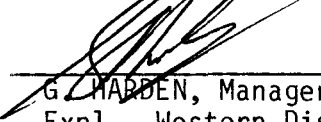
- a) There is an association between the distribution of the mineralized boulders and anomalous Cu, Bi and Au values in soils. Anomalous values are as follows: Cu > 40 ppm, Au > 10 ppb, Bi > 5 ppm
- b) Arsenic has a fairly high background (20-100 ppm As) with values >140 ppm considered anomalous. The anomalous values are sporadically distributed along the road with a tendency for a greater concentration at the northern end.

IX. RECOMMENDATIONS

1. A 3x1 km grid should be established with cut lines at 200 m intervals.
2. Ground magnetic and electromagnetic surveys should be carried out to check for a local source for the mineralized boulders.

Reported by:   
I.A. Paterson  
Project Geologist

Endorsed by:   
W.J. Wolfe  
Assistant Manager

Approved for  
Release by:   
G. HADDEN, Manager  
Expl., Western District

IAP/cgs

Distribution

Western District  
Mining Recorder

X. REFERENCES

Dean, P., 1977, Geological, Geochemical and Geophysical Report, Anise Claim Group, Assessment Report #090200.

Templeman-Kluit, D., 1977, Quiet Lake Map-Area, Geol. Surv. Canada,  
Open File 486.

EXHIBIT "A"

STATEMENT OF EXPENDITURES

FOR THE PERIOD JULY 9-21, 1985

<u>Salaries:</u>	I.A. Paterson	14 days @ \$245.90/day (11 field, 3 report prep)	\$ 3,442.90
	M.J. Gray	12 days @ \$128.04	1,536.48
	M.E. Baknes	12 days @ \$108.24	1,298.90
<u>Transportation:</u>	Truck rental & gasoline		885.40
	Helicopter, 2.4 hours @ \$475/hour		1,140.00
	Fixed Wing		270.00
<u>Geochemistry:</u>	92 soils and silts (Cu,Au,Bi,As) @ \$12.65 each		1,163.80
<u>Domicile:</u>	Food & equipment & expeditor 3 men, 12 days \$25/day		<u>900.00</u>
		TOTAL	<u>\$10,637.48</u>

I.A Paterson,  
Project Geologist

EXHIBIT "B"

STATEMENT OF QUALIFICATIONS

I, Ian A. Paterson, with business address at 700-409 Granville Street, Vancouver, British Columbia, do hereby certify that I have supervised the field work and have assessed and interpreted the data resulting from this geological and geochemical programme on the LP and Tay mineral claims.

I also certify that:

1. I graduated from the University of Aberdeen, Scotland with B.Sc. (Hons.) degree in 1967.
2. I graduated from the University of British Columbia with a Ph.D. degree in 1973.
3. I am a registered Professional Engineer of the Province of British Columbia, a Fellow of the Geological Association of Canada and a member of the Canadian Institute of Mining and Metallurgy.
4. I have been engaged in my profession since my graduation in 1973.
5. I have been employed by Cominco Ltd. since 1974.

Respectfully Submitted:

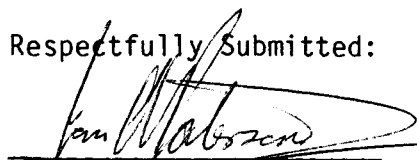
  
I.A. Paterson,  
Project Geologist

EXHIBIT "C"


IN THE MATTER OF THE ACT RESPECTING QUARTZ MINING IN THE YUKON TERRITORY AND IN THE MATTER OF A GEOLOGICAL AND GEOCHEMICAL PROGRAMME CARRIED OUT IN PORTIONS OF THE TAY AND LP MINERAL CLAIMS LOCATED 60 KM SOUTH OF THE TOWN OF ROSS RIVER IN THE WATSON LAKE MINING DIVISION OF THE YUKON TERRITORY.

S T A T E M E N T

I, Ian A. Paterson of the City of Vancouver in the Province of British Columbia, make oath and say:

1. THAT I am employed as a geologist by Cominco and, as such, have personal knowledge of the facts to which I hereinafter depose;
2. THAT included in this report and marked as Exhibit "A" is a true copy of expenditures incurred on a geological and geochemical programme on the Tay and LP mineral claims;
3. THAT the said expenditures were incurred between the 9th to the 21st of July, 1985 for the purpose of mineral exploration on the above claims.

Dated this 23 day of September, 1985  
at Vancouver, British Columbia

  
I.A. Paterson  
Project Geologist



# TAY-LP CLAIMS



Drawn by: <b>M.J.G.</b>		Traced by:	
Revised by	Date	Revised by	Date

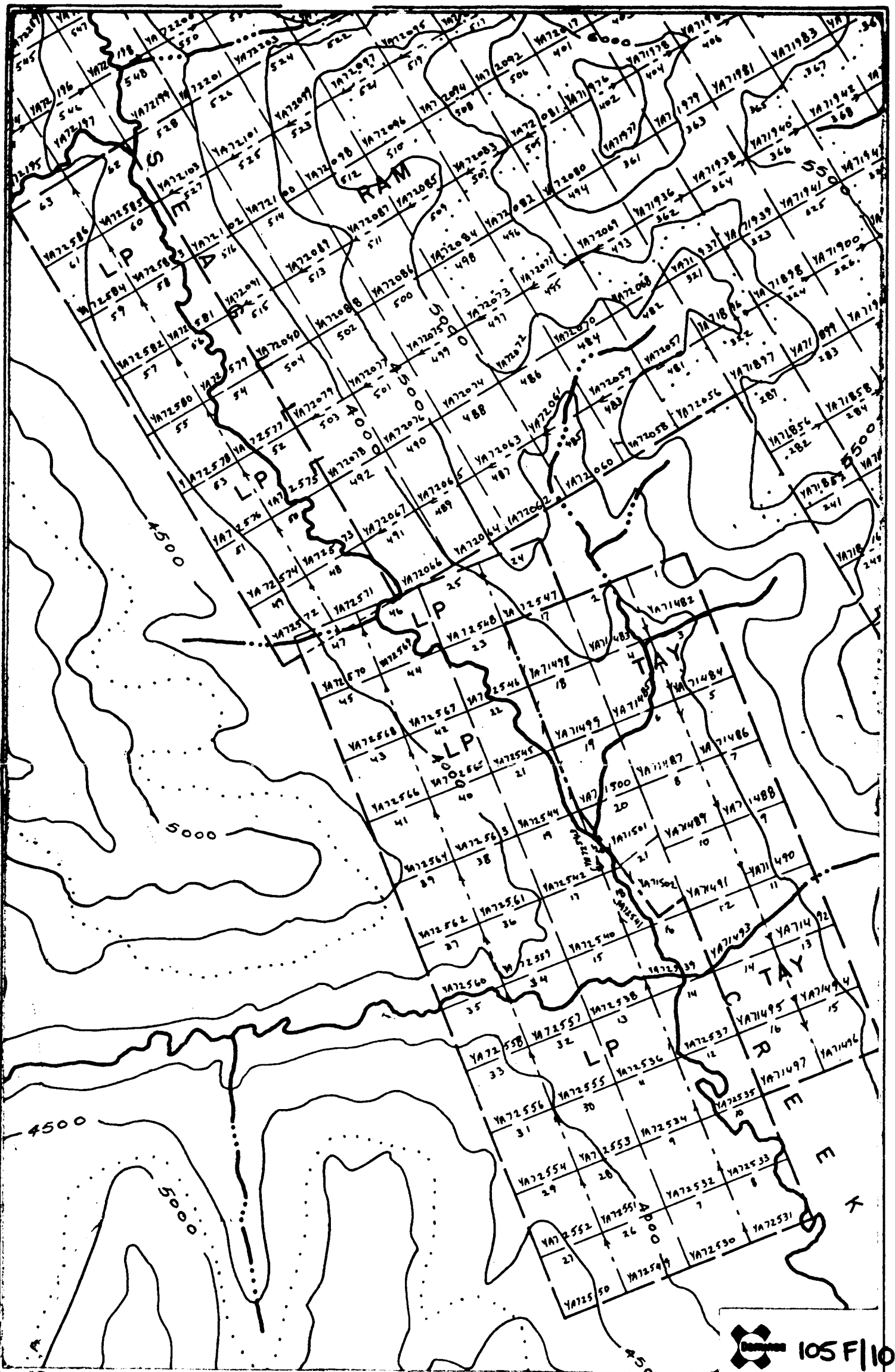
**LOCATION MAP  
TAY-LP CLAIMS  
WATSON LAKE M.D., YUKON**

Scale: 1: 1,000,000

Date: 10 Sept. 1985

Plate:

Figure  
1



105 F10

091674

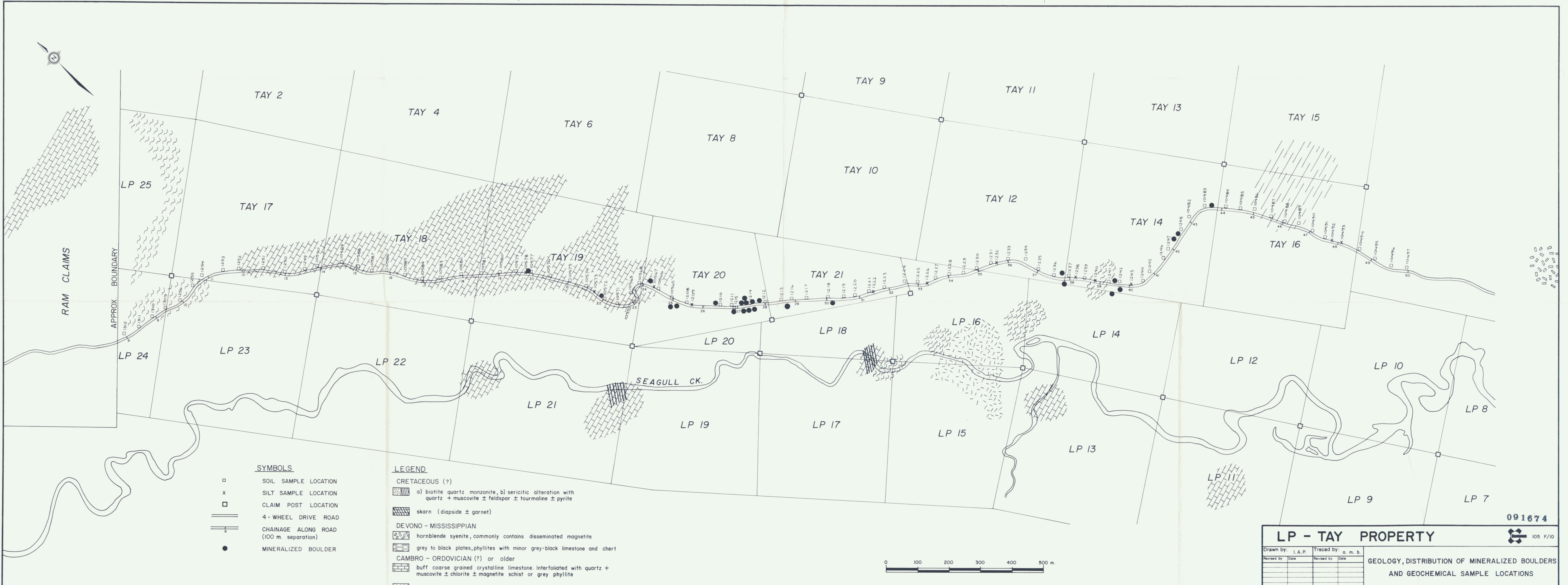
# Tay- LP Claims

Drawn by:		Traced by:	
Revised by	Date	Revised by	Date

Scale: 1" = 1/2 mile

Date: Sept. 85

Plate: 1



- SYMBOLS**
- SOIL SAMPLE LOCATION
  - x SILT SAMPLE LOCATION
  - CLAIM POST LOCATION
  - ==== 4-WHEEL DRIVE ROAD
  - CHAINAGE ALONG ROAD (100 m. separation)
  - MINERALIZED BOULDER

- LEGEND**
- CRETACEOUS (?)
- [Hatched pattern] a) biotite quartz monzonite, b) sericitic alteration with quartz + muscovite ± feldspar ± tourmaline ± pyrite
  - [Hatched pattern] skarn (diopside ± garnet)
- DEVONO - MISSISSIPPIAN
- [Hatched pattern] hornblende syenite, commonly contains disseminated magnetite
  - [Hatched pattern] grey to black plates, phyllites with minor grey-black limestone and chert
- CAMBRO - ORDOVICIAN (?) or older
- [Hatched pattern] buff coarse grained crystalline limestone. Interfoliated with quartz + muscovite ± chlorite ± magnetite schist or grey phyllite
  - [Hatched pattern] quartz + muscovite + biotite schist



**091674**

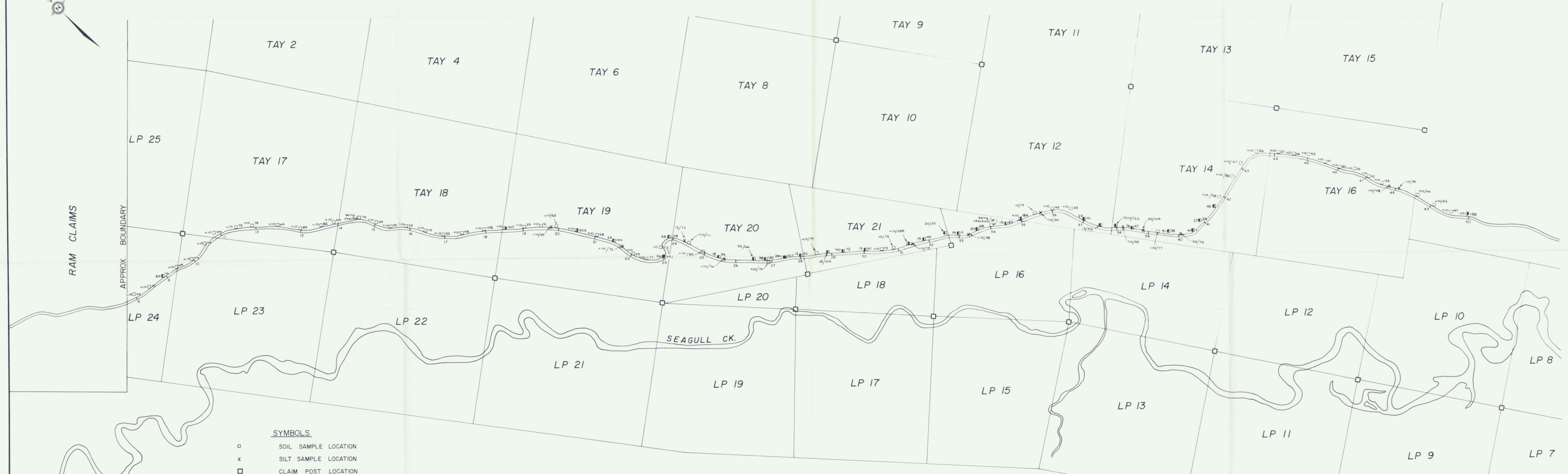
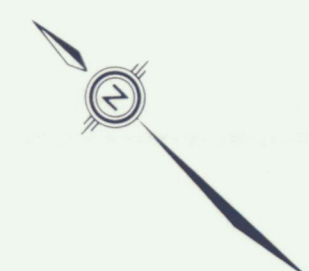
105 F/10

**LP - TAY PROPERTY**

Drawn by: I.A.P.	Traced by: a. m. b.
Revised by: _____	Revised by: _____
Date: _____	Date: _____

**GEOLOGY, DISTRIBUTION OF MINERALIZED BOULDERS AND GEOCHEMICAL SAMPLE LOCATIONS**

Scale: 1: 5,000      Date: Sept., 1985      Plate: 2a

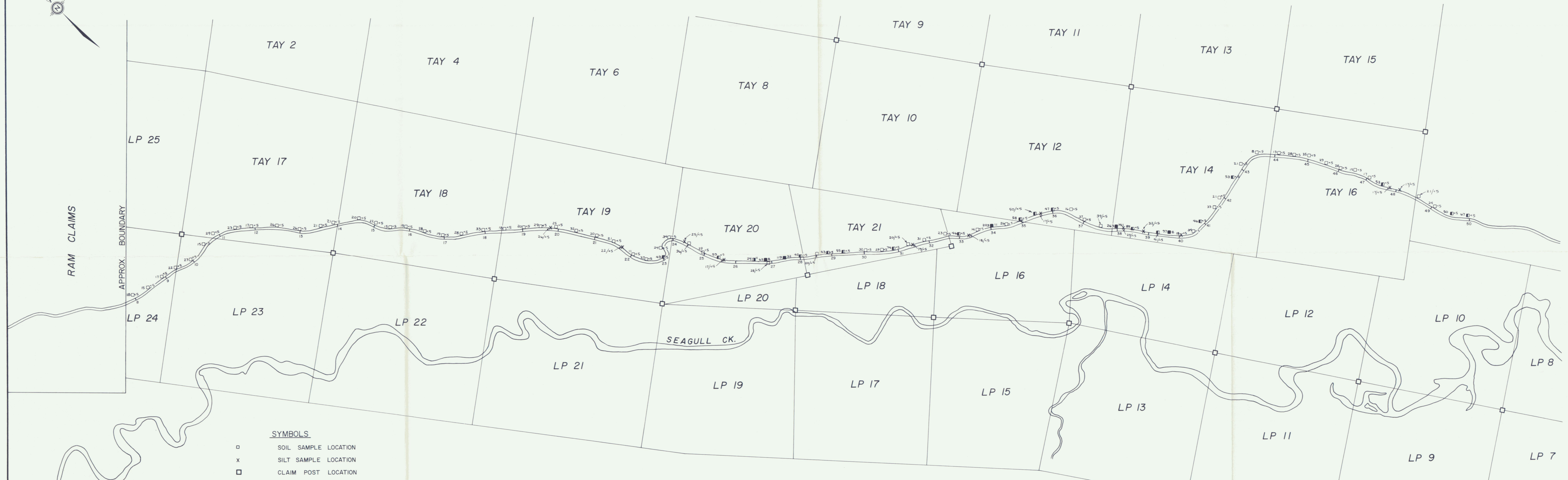
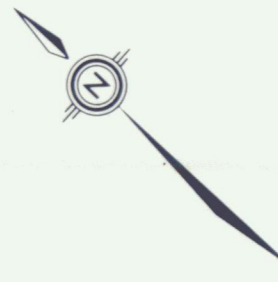


- SYMBOLS**
- SOIL SAMPLE LOCATION
  - x SILT SAMPLE LOCATION
  - CLAIM POST LOCATION
  - ==== 4 - WHEEL DRIVE ROAD
  - ==== CHAINAGE ALONG ROAD (100m. separation)
- ANOMALIES**
- Au >10 ppb
  - As >150 ppm



091674

LP - TAY PROPERTY			
Drawn by: I. A. P.	Traced by: a. m. b.	GEOCHEMISTRY Au, As	
Revised by: Date	Revised by: Date		
		Scale: 1: 5,000	Date: Sept., 1985
			Plate: 2 b



- SYMBOLS**
- SOIL SAMPLE LOCATION
  - x SILT SAMPLE LOCATION
  - CLAIM POST LOCATION
  - ==== 4 - WHEEL DRIVE ROAD
  - ==== CHAINAGE ALONG ROAD (100m. separation)

- ANOMALIES**
- Cu >40 ppm
  - Bi >5 ppm



091674

LP - TAY PROPERTY			
Drawn by: I. A. P.	Traced by: G. M. B.	GEOCHEMISTRY Cu, Bi	
Revised by: _____	Revised by: _____		
Date: _____	Date: _____	Scale: 1: 5,000	Date: Sept., 1985
		Plate: 2 c	