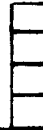


MAP No.

ASSESSMENT REPORT  
 N. M. E. A. P.  
 CONFIDENTIAL  
 OPEN FILE



TYPE OF  
 WORK: GEOCHEMICAL

115 0 10

REPORT FILED UNDER	L.B. Gatenby	DOCUMENT NO. 091664
DATE PERFORMED	20-25 Sept. 1984	DATE FILED: 22 Nov. 1985
LOCATION - LAT. LONG.	63°43'N	AREA:
	138°42'W	
CLAIM NO.	LASS 1-8 YA79884-YA79891	
	13-20 YA79898-YA79905	
VALUE \$		
WORK DONE BY	L.B. Gatenby	
WORK DONE FOR	L.B. Gatenby	
REMARKS	<p>A geochemical soil survey was conducted over and in the vicinity of an old gold showing known as the Kentucky lode. A total of 92 samples were taken over 5,485m of line.</p> <p style="text-align: right;">✓                  4/28/85 p. 241.</p>	

**091664**

GEOCHEMICAL SOIL SURVEY ON THE LASS GROUP  
OF 16 CLAIMS IN THE DAWSON MINING DIVISION  
YUKON TERRITORY

THE CLAIMS ARE ON MAP SHEET 115-0-10  
AT 63°43'N AND 138°42'W

WORK DONE BETWEEN SEPT. 20TH - 25TH, 1984  
FIELD WORK AND REPORT BY L.B. GATENBY, P. ENG.

**09 16 64**

North Vancouver, B.C.

November 15, 1985

This report has been examined by  
the Geological Evaluation Unit  
under Section 53 (4) Yukon Quartz  
Mining Act and is allowed as  
representation work in the amount  
of \$ 1600.00 .

*D. D. Emend*

*for* Regional Manager, Exploration and  
Geological Services for Commissioner  
of Yukon Territory.



TABLE OF CONTENTS

	<u>Page</u>
SCOPE OF WORK.....	1
CLAIM LIST AND PARTICULARS.....	1
PERSONNEL AND EXPENDITURES.....	2
SOIL SAMPLING SURVEY.....	2
DISCUSSION OF RESULTS.....	3
CERTIFICATE OF QUALIFICATION.....	5

MAPS

CLAIM MAP - Scale 1:31680.....	(In Pocket)
GEOCHEMICAL SOIL SAMPLE MAP - Scale 1"=500'	(In Pocket)



09 16 6 4

SCOPE OF WORK

The work comprised line cutting, surveying and geochemical soil sampling on the LASS claim group involving 92 samples on 18,000 feet of line. The samples are from the clay bedrock below the humus layer. The old workings were located by pace and compass and the soil samples by string measuring device and compass. The work was done between September 20th and 25th, 1984.

CLAIM LIST AND PARTICULARS

Claims are located in the Dawson Mining Division, Yukon Territory, as follows:

<u>Name</u>	<u>Tag Number</u>	<u>Registered Owner</u>	<u>Record Date</u>
LASS #1	YA 79884	Eleanor J. Gatenby	June 7, 1984
LASS #2	YA 79885	"	"
LASS #3	YA 79886	"	"
LASS #4	YA 79887	"	"
LASS #5	YA 79888	"	"
LASS #6	YA 79889	"	"
LASS #7	YA 79890	"	"
LASS #8	YA 79891	"	"
LASS #13	YA 79898	Lisle B. Gatenby	June 14, 1984
LASS #14	YA 79899	"	"
LASS #15	YA 79900	"	"
LASS #16	YA 79901	"	"
LASS #17	YA 79902	"	"
LASS #18	YA 79903	"	"
LASS #19	YA 79904	"	"
LASS #20	YA 79905	"	"

PERSONNEL AND EXPENDITURES

L.B. Gatenby	2 days surveying and line cutting	\$ 200
L.W. Gatenby	2 days soil sampling	200
G.F. Gatenby	2 days soil sampling	200
Brad Wiede	1 day soil sampling	100
Karmen Lucos	1 day soil sampling	100
Food and local transportation		320
Chemex Labs Ltd., North Vancouver, B.C., Geochemical analysis gold and arsenic		<u>938</u>
	Total	<u>\$2,058</u>

SOIL SAMPLING SURVEY

A program of reconnaissance soil sampling 22 LASS claims near Laskey Creek and Gold Run Creek on Map Sheet 115-0-10 was done in September 1984 and involved eight man days. A total of 92 soil samples from the clay decomposed bedrock were analysed by Chemex Labs Ltd., of North Vancouver, B.C. in April 1985 for gold and arsenic.

Bedrock is chloritic quartz schist foliated in a northwesterly direction and with generally flat dips. Quartz veining mineralization strikes generally east-west with steep dips cutting the schistosity. Observed strikes are N 70° W to S 70° W.

It was recognized the area is non-glaciated with a variable but usually thin layer of humus on the sidehills over the decomposed bedrock clay. The small creek valleys usually have deeper humus of a foot or more with the larger creeks, as Laskey, having deep humus and transported silt up to 50 feet deep.

Permafrost is also a factor in the soil sampling procedure being down its maximum from natural thaw in September of about a foot in moss covered deep humus to over 3 feet on the sidehills and ridges with their humus on decomposed bedrock clay. It is not practical to attempt to soil sample bedrock clays through frozen humus and silt.

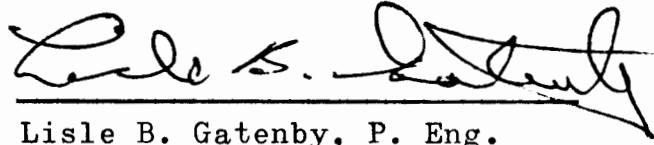
Soil sampling was done at usually 300 feet spacing on three lines spread over about 3,000 feet and crossing the strike of the known mineral exposures. Sample spacing was shortened to 150 feet and some 75 foot intervals in areas of old workings.

Gold and arsenic were selected as significant elements in this reconnaissance survey and their amounts in the soil samples were determined by neutron activation analysis procedures. The samples were screened by Chemex Labs Ltd. of North Vancouver, B.C. to minus 80 mesh. Gold was then collected in a silver bead from 10 gram samples by fire assay procedures. The silver bead was irradiated in a thermal neutron flux and gold detected by gamma spectroscopy to a sensitivity and detection limit of 1 part per billion which is 1 mg. per tonne. Arsenic was determined on a 1 gram sample by direct irradiation and gamma spectroscopy to a detection limit of 1 part per million and a sensitivity of 2 parts per million.

#### DISCUSSION OF RESULTS

Soil sample results are shown on the attached Chemex Labs Ltd. "Certificate of Analysis" sheets and plotted on the attached 500 feet scale map by L. B. Gatenby. The anomalous gold threshold by calculation

is around 28 ppb with a standard deviation of about 10 ppb. Calculations on the arsenic results give an anomalous threshold of around 11 ppm, a standard deviation of about 2 ppm. Mapping shows the anomalous gold samples are isolated but it is recognized most of the sample are in clay bedrock material with little migration and represent only a few square feet of area. Arsenic is more mobile than gold but results do not correlate with the level of gold concentration.

A handwritten signature in cursive script, reading "Lisle B. Gatenby". The signature is written in black ink and is positioned above a horizontal line.

Lisle B. Gatenby, P. Eng.

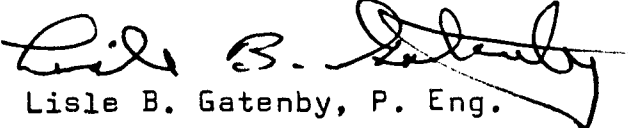
North Vancouver, B.C.,  
November 15, 1985

CERTIFICATE OF QUALIFICATION

I, Lisle B. Gatenby, of 3196 Westmount Place, West Vancouver, B.C., do hereby certify that:

1. I am a graduate of the University of British Columbia, B.Ap.Sc., in Mining Engineering [1942]. I am a member of the Association of Professional Engineers of British Columbia since 1952.
2. I have practiced my profession continuously since 1940 except for one year in the Canadian Army. I was employed for 35 years as Exploration Engineer responsible for program development and supervision of drilling, geological, geophysical and geochemical work for Cominco, Anaconda Copper, Rio Tinto and Yukon Consolidated Gold Corp. Ltd., and was Director of Yukon Consolidated Gold Corporation Ltd. from 1974 to 1980.

DATED at West Vancouver, British Columbia this fourteenth day of November, 1985.

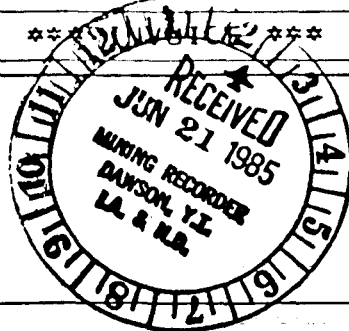
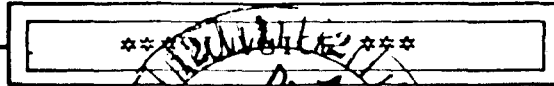
  
Lisle B. Gatenby, P. Eng.



# Chemex Labs Ltd.

Analytical Chemists • Geochemists • Registered Assayers

212 Brooksbank Ave  
North Vancouver, B.C.  
Canada V7J 2C  
Telephone: (604) 984-022  
Telex: 043-5259



To : GATENBY, MR. LYLE  
3196 WESTMOUNT PLACE,  
WEST VANCOUVER, B.C.  
V7V 3G3

Invoice # : 18511389

Date : 24-APR-85

Quantity	Description	Unit price	Amount
Re: A8511389			
92	101 - Au NAA	\$6.25	\$575.00
92	156 - As NAA QUOTE	\$3.25	\$299.00
92	201 - Soil preparation	\$0.70	\$ 64.40

Please pay this amount -----> \$938.40  
=====

TERMS -- NET 30 DAYS  
1.5% per month (18% per annum) charged on overdue accounts

*Copy # 117 June 3<sup>rd</sup> /85  
LBB*





# Chemex Labs Ltd.

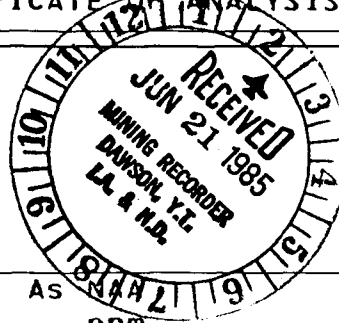
Analytical Chemists • Geochemists • Registered Assayers

212 Brooksbank Ave  
North Vancouver, B.C.  
Canada V7J 2C1  
Telephone: (604) 984-0221  
Telex: 043-52597

## CERTIFICATE OF ANALYSIS

TO : GATENBY, MR. LYLE

3196 WESTMOUNT PLACE,  
WEST VANCOUVER, B.C.  
V7V 3G3



CERT. # : A8511389-001  
INVOICE # : 18511389  
DATE : 24-APR-85  
P.O. # : NONE

Sample description	Prep code	Au NAA ppb	As ppm				
A1 18" H	201	5	6	--	--	--	--
A2 12" H	201	15	6	--	--	--	--
A3 12" H	201	18	6	--	--	--	--
A4 12" H	201	22	8	--	--	--	--
A5 4" H	201	13	8	--	--	--	--
A6 6" H	201	43	4	--	--	--	--
A7 3" H	201	13	8	--	--	--	--
A8 6" H	201	11	10	--	--	--	--
A9 6" H	201	21	6	--	--	--	--
A10 6" H	201	2	6	--	--	--	--
A11 4" H	201	5	6	--	--	--	--
A12 4" H	201	13	8	--	--	--	--
A13 4" H	201	29	4	--	--	--	--
A14 5" H	201	3	8	--	--	--	--
A15 2" H	201	10	8	--	--	--	--
A16 5" H	201	17	8	--	--	--	--
A17 3" H	201	9	6	--	--	--	--
A18 4" H	201	9	6	--	--	--	--
A19 3" H	201	1	8	--	--	--	--
A20 3" H	201	2	4	--	--	--	--
A21 6" H	201	6	2	--	--	--	--
A22 6" H	201	6	4	--	--	--	--
A23 3" H	201	16	2	--	--	--	--
A24 3" H	201	25	6	--	--	--	--
A25 1" H	201	2	6	--	--	--	--
A26 1" H	201	5	4	--	--	--	--
A27 1" H	201	<1	4	--	--	--	--
A28 1" H	201	<1	2	--	--	--	--
A29 3" H	201	2	2	--	--	--	--
A30 1" H	201	2	6	--	--	--	--
A31 4" H	201	4	4	--	--	--	--
A32 3" H	201	5	4	--	--	--	--
A33 3" H	201	8	4	--	--	--	--
A34 6" H	201	12	8	--	--	--	--
A35 12" H	201	2	6	--	--	--	--
A36 6" H	201	<1	6	--	--	--	--
A37 12" H	201	<1	10	--	--	--	--
A38 6" H	201	2	8	--	--	--	--
A39 4" H	201	<1	2	--	--	--	--
A40 1" H	201	<1	4	--	--	--	--



Certified by Hart Bichler



# Chemex Labs Ltd.

Analytical Chemists • Geochemists • Registered Assayers

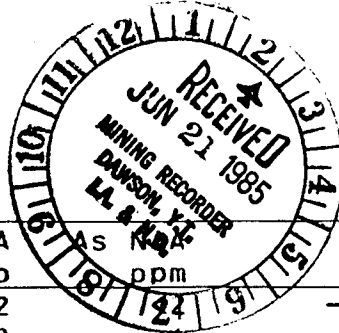
212 Brooksbank Ave  
North Vancouver, B.C.  
Canada V7J 2C  
Telephone: (604) 984-0222  
Telex: 043-5259

## CERTIFICATE OF ANALYSIS

TO : GATENBY, MR. LYLE

3196 WESTMOUNT PLACE,  
WEST VANCOUVER, B.C.  
V7V 3G3

CERT. # : A8511389-002  
INVOICE # : I8511389  
DATE : 24-APR-85  
P.O. # : NONE



Sample description	Prep code	Au NAA ppb	As ppm				
B1 0" H	201	2					
B2 6" H	201	3					
B3 6" H	201	20					
B4 6" H	201	124					
B5 6" H	201	13					
B6 4" H	201	5					
B7 0" H	201	27					
B8 2" H	201	27					
B9 2" H	201	2					
B10 2" H	201	12					
B11 2" H	201	42					
B12 2" H	201	14					
B13 3" H	201	2					
B14 1" H	201	<1					
B15 3" H	201	9					
B16 3" H	201	<1					
E 01	201	18					
E 02	201	13					
E 03	201	7					
E 04	201	4					
E 05	201	7					
E 06	201	14					
E 07	201	10					
F 08	201	2					
E 09	201	13					
E 10	201	9					
E 11	201	19					
E 12	201	4					
E 13	201	4					
E 14	201	3					
E 15	201	57					
E 16	201	<1					
E 17	201	<1					
E 18	201	<1					
E 19	201	<1					
E 20	201	<1					
E 21	201	<1					
E 22	201	1					
E 23	201	<1					
E 24	201	3					



Certified by Hart Bichler



# Chemex Labs Ltd.

Analytical Chemists • Geochemists • Registered Assayers

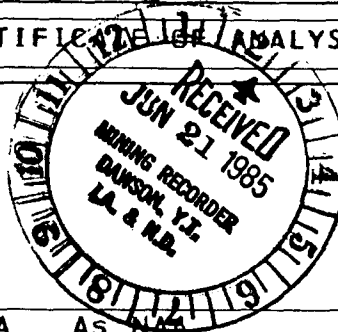
212 Brooksbank Ave  
North Vancouver, B.C.  
Canada V7J 2C

Telephone: (604) 984-022  
Telex: 043-5259

## CERTIFICATE OF ANALYSIS

TO : GATENBY, MR. LYLE

3196 WESTMOUNT PLACE,  
WEST VANCOUVER, B.C.  
V7V 3G3

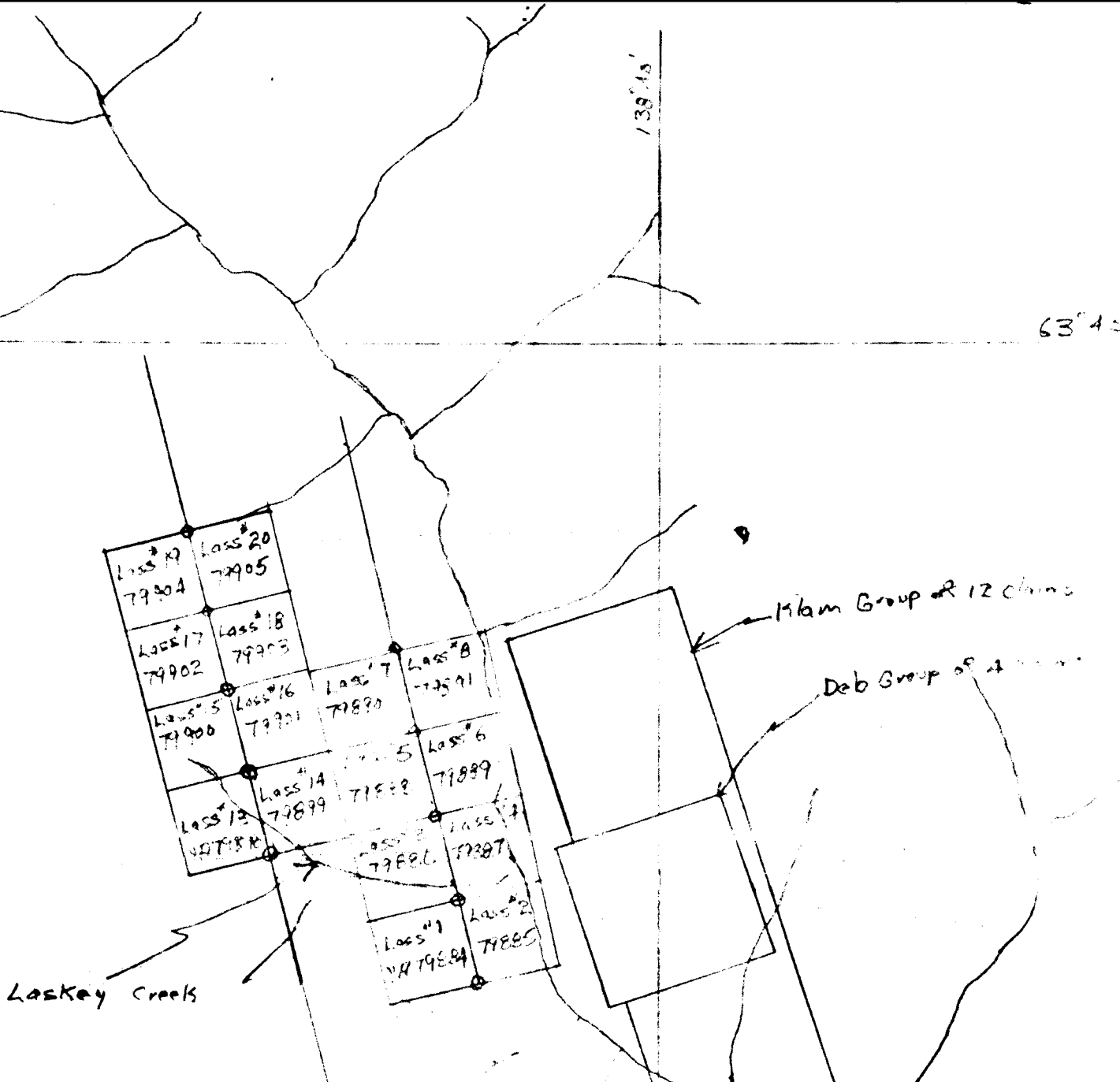


CERT. # : A8511389-003  
INVOICE # : I8511389  
DATE : 24-APR-85  
P.O. # : NONE

Sample description	Prep code	Au NAA ppb	As NAA ppm				
E 25	201	2	4	--	--	--	--
E 26	201	4	6	--	--	--	--
E 27	201	4	8	--	--	--	--
E 28	201	21	4	--	--	--	--
E 29	201	8	4	--	--	--	--
E 30	201	1	4	--	--	--	--
E 31	201	<1	<2	--	--	--	--
E 32	201	<1	2	--	--	--	--
E 33	201	<1	6	--	--	--	--
E 34	201	<1	<2	--	--	--	--
E 35	201	<1	4	--	--	--	--
E 36	201	2	2	--	--	--	--



Certified by Hart Bichler



091684

Location Map

Class #1 to #8 and #13 to #20  
Mineral Claims

Map 115-0-10

Dawson M.D.

Scale 1:31,680 June 1985

H. B. Lintley





091664

Bedrock clay Geochemical Soil Survey  
 Loss #1 to #8 and #13 to #20  
 Total 16 claims  
 Scale 1" = 500'  
 Sheet 115-0-10  
 Gold Run Creeks

Legend

○ Sample line and number — PPB Gold — PPM Arsenic

