

MAP No.

ASSESSMENT REPORT
N. M. E. A. P.
CONFIDENTIAL
OPEN FILE



TYPE OF
WORK: TRENCHING

105 0 1

REPORT FILED UNDER	Hudson Bay Exploration and Development Co. ^{Ltd.}	DOCUMENT NO.	091663
DATE PERFORMED	September 1985	DATE FILED:	November 18, 1985
LOCATION - LAT.	63°08'N	AREA:	
LONG.	130°06'W		
CLAIM NO.	TOM 147-183 YA45447-YA45483		
VALUE \$			
WORK DONE BY	G. Bidwell		
WORK DONE FOR	Hudson Bay Exploration and Development Co. Ltd.		

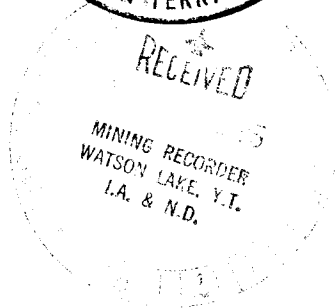
REMARKS

091663

Geochemical soil and magnetometer surveys were conducted on the claims in 1981. Trenching was done in 1983 over anomalous zones in hopes of encountering stratiform Ba, Pb, Zn, Ag mineralization in argillic rocks.

Two previous trenches were deepened and 30 samples taken and assayed for silver, lead, zinc and barium. The results showed no significant anomalies.

YEX 85 P-177 ✓



ASSESSMENT REPORT

ON

TOM 147-183 (YA45447-483)

63°08'N, 130°06'W

TRENCHING PROGRAM

WATSON LAKE MINING DISTRICT

YUKON TERRITORY

SEPTEMBER 1985

G. BIDWELL

NOVEMBER 1985

09 16 63

TABLE OF CONTENTS

	<u>Page</u>
1. INTRODUCTION.....	1
2. LOCATION AND ACCESS.....	1
3. PERSONNEL.....	1
4. CLAIM OWNERSHIP.....	1
5. TRENCHING.....	3
6. CONCLUSIONS.....	3
APPENDIX I - REVIEW OF EXPENDITURES	
APPENDIX II - QUALIFICATIONS: G. BIDWELL	
FIGURES:	
1 TOM CLAIMS: CLAIM LOCATION MAP.....	2
2 TRENCH #T-1 PLAN.....	4
3 TRENCH #T-2 PLAN.....	5
4 TOM CLAIMS (SOUTH GROUP)-TRENCH AREA PLAN.....	in pocket

1. INTRODUCTION:

The TOM Claims - South Group (147-183) were staked in August 1979 by Hudson Bay Exploration and Development Company Limited. The claims were investigated during 1980 by reconnaissance geological mapping and a small soil sampling grid was established in an overburden area on TOM 167-170. In 1981 a second grid was located in the same general area and a magnetic survey along with additional soil sampling was done. Follow-up bulldozer trenching on a magnetic anomaly and rock geochemistry was undertaken later in 1981. In 1983 additional bulldozer trenching was carried out in the vicinity but bedrock was not attained.

In 1985 two of the earlier trenches were deepened but bedrock has still not been reached. The enclosed results were compiled at the Whitehorse office of Hudson Bay Exploration and Development Company Limited.

2. LOCATION AND ACCESS:

The TOM Claims (147-183) are located in the Watson Lake Mining District near Macmillan Pass on claim map 105/0/1 approximately centered at $63^{\circ}08'N$ $130^{\circ}06'W$.

The claims are accessible by helicopter from the Macmillan Pass airstrip which is 5 miles north west of the claims. The airstrip is located along the North Canol Road approximately 140 miles north of Ross River, Y. T.

A road suitable for four wheel drive travel has been located to the property from the mine site of the Tom Valley Project 2 miles north of the claims.

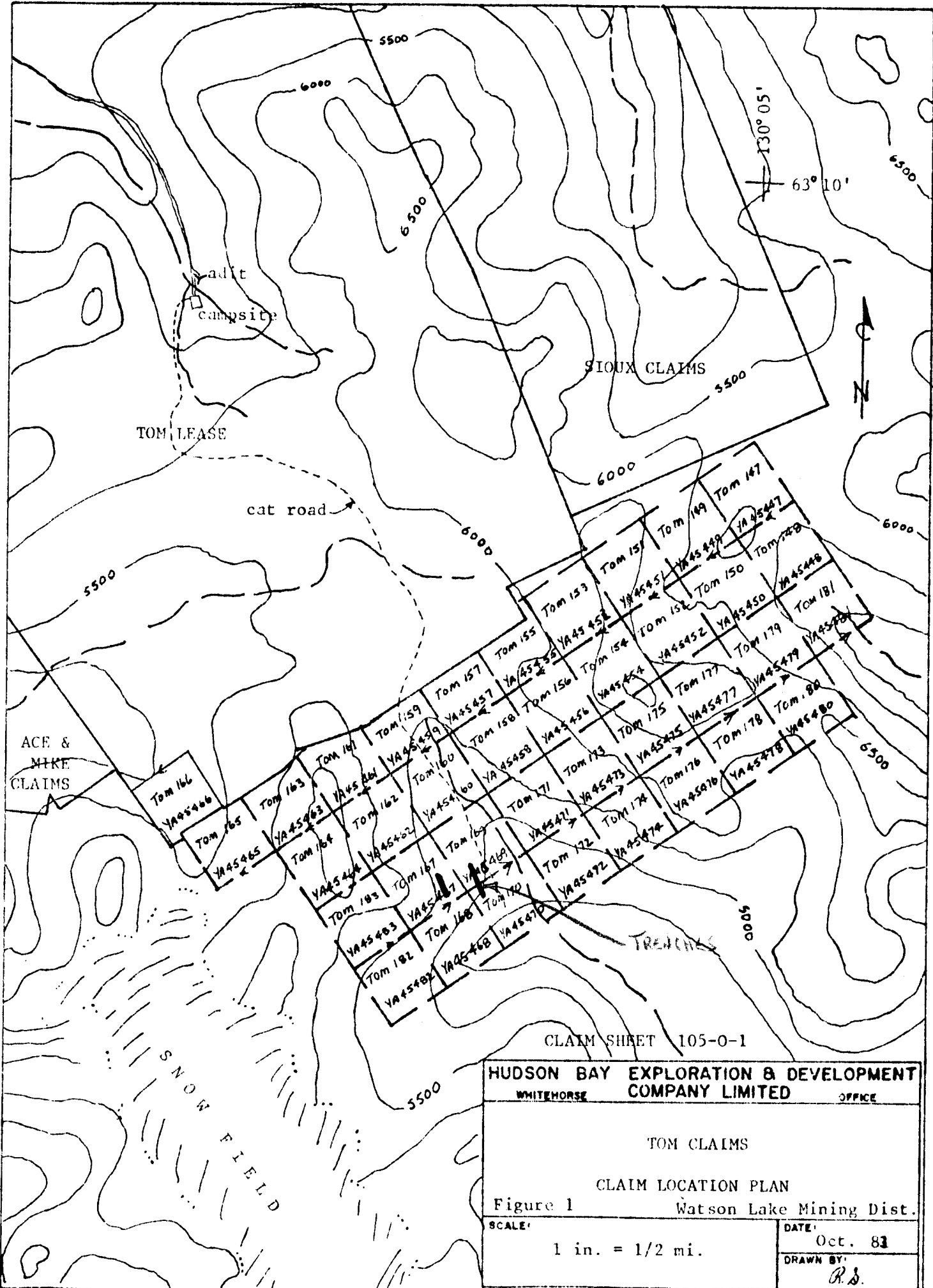
See Figure 1.

3. PERSONNEL: Supervisor - Gerald Bidwell
 Cat Operator - Glen Brown

4. CLAIM OWNERSHIP:

This exploration report covers the claims TOM 147-183 (YA45447-YA45483) indicated on figure 1. The claims total 37, all are wholly owned by Hudson Bay Exploration and Development Company Limited of 100-10 Burns Rd., Whitehorse Yukon Territory. Y1A 4Y9

The exploration was carried out in September 1985.



CLAIM SHEET 105-0-1

HUDSON BAY EXPLORATION & DEVELOPMENT	
WHITEHORSE	OFFICE

TOM CLAIMS

CLAIM LOCATION PLAN

Figure 1 Watson Lake Mining Dist.

SCALE:	DATE:
1 in. = 1/2 mi.	Oct. 83

DRAWN BY:
R.S.

5. TRENCHING:

The 1983 trenching failed to reach bedrock. The purpose of the 1985 program was to deepen and/or extend the earlier trenches to locate the apparent sand-banded argillite/graphitic argillite contact in the vicinity.

At Trench T-1 the new work deepened a section 62 metres long by an average of 2.0 metres. Bedrock was still not attained and permafrost prevented further progress. Soil samples were taken at 5 metre intervals along the length of the trench and analyzed for silver, lead, zinc, and barium by Bondar-Clegg & Company Limited at their North Vancouver office. The results are plotted on the accompanying sketch Fig. 2. The total volume of material removed in T-1 was 630 cubic metres or 866 yards.

Trench T-2 is located 150 metres along the apparent strike. Again bedrock was not attained due to permafrost. This trench was also sampled at 5 metre intervals and analyzed as in T-1. The total volume of material removed in T-2 was 595 cubic metres or 774 yards.

6. CONCLUSIONS:

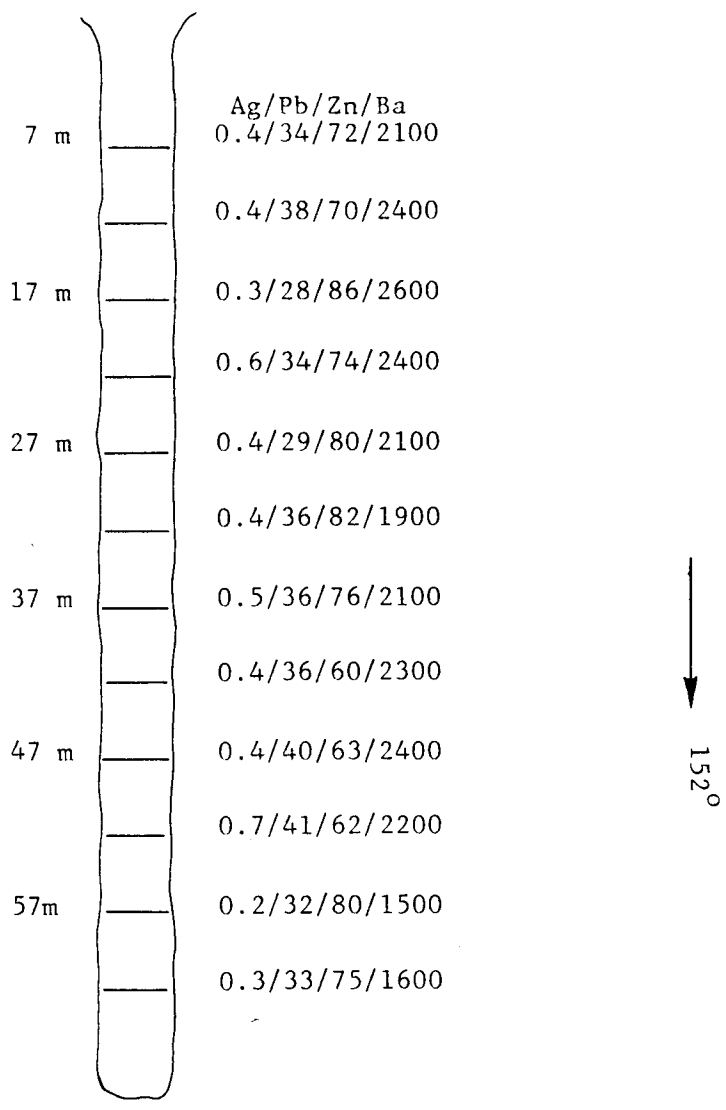
The results of the trench sampling indicates consistent values for all four elements with no obvious anomalies. The zinc and barium values in Trench T-1 are slightly higher than those in T-2 but well below an anomalous level.

<u>ELEMENT</u>	<u>NO. SAMPLES</u>	<u>LOW*</u>	<u>HIGH*</u>	<u>MEAN*</u>
Silver	30	0.2	1.3	0.4
Lead	30	26	63	44
Zinc	30	30	86	56
Barium	30	1200	2600	1750

* values reported in parts per million (ppm).

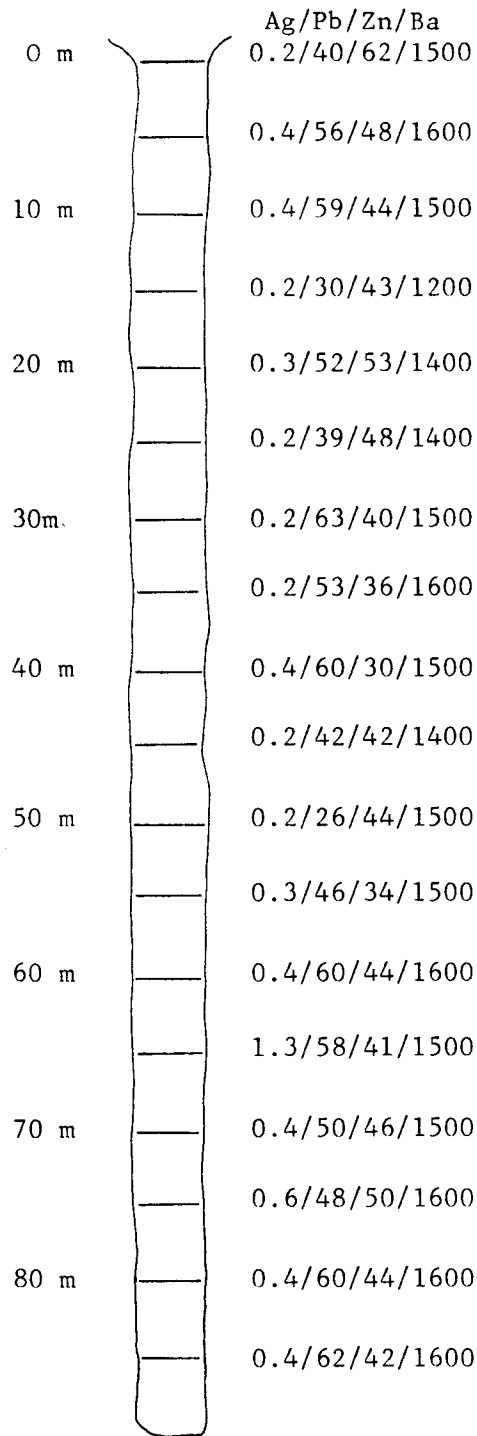


G. Bidwell
District Manager
Hudson Bay Exploration and Development Company Limited



Volume of Trench = 62m x 5m x 2.0m
 = 620m³
 or 806 yards³

HUDSON BAY EXPLORATION & DEVELOPMENT	
WHITEHORSE	COMPANY LIMITED
OFFICE	
<p>FIGURE 2</p> <p>TOM CLAIMS (SOUTH GROUP)</p> <p>TRENCH T-1</p>	
SCALE:	DATE:
1:500	Nov/85
	DRAWN BY:



↓
150°

Volume of Trench = 85m x 5m x 1.4m
 = 595 m³
 or 774 yds³

HUDSON BAY EXPLORATION & DEVELOPMENT	
WHITEHORSE	COMPANY LIMITED OFFICE
FIGURE 3 TOM CLAIMS (SOUTH GROUP) TRENCH T-2	
SCALE:	DATE:
1:500	Nov/85
	DRAWN BY:

091663

HUDSON BAY EXPLORATION & DEVELOPMENT COMPANY LIMITED

TOM CLAIMS - SOUTH GROUP

Scale 1:1,000

November, 1983

- Unit 3b - Carbonaceous argillite
- Unit 3a - Silt-banded argillite
- Unit 2 - Chert pebble conglomerate

- Bedding
- F₁ foliation



TOM
169
TOM
170

APPENDIX I

REVIEW OF EXPENDITURES - 1985

TOM CLAIMS (SOUTH GROUP)

SALARY: G. Bidwell - supervisor and report preparation - 4days x \$300/day	\$ 1,200.00
TRENCHING: TRENCH T-1 = 806 yds ³ T-2 = <u>774 yds³</u> 1580 yds ³ x 1.50/yd	2,370.00
ASSAYING: as per invoice	<u>282.00</u>
Total -	\$ 3,852.00

Bondar-Clegg & Company Ltd.

5420 Canotek Rd.,
Ottawa, Ontario,
Canada K1J 8X5
Phone: (613) 749-2220
Telex: 053-3233



HUDSON BAY EXPLORATION AND DEVELOPMENT CO. LTD.
MR. G. BIDWELL
100-10 BURNS ROAD
WHITEHORSE, YUKON
Y1A 4Y9

Invoice : 19386. Page 1

LTD.

Date : 30-SEP-85

Report No: 125-2997

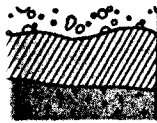
Project : 7381-~~88~~ 89

Reference:

BCC WHSE 45-383

30 Analyses of Silver	at \$ 2.00	\$ 60.00	
30 Analyses of Lead	at \$ 1.00	\$ 30.00	
30 Analyses of Zinc	at \$ 1.00	\$ 30.00	
Subtotal		\$ 120.00	\$ 120.00
30 Analyses of Barium	at \$ 4.50	\$ 135.00	
Subtotal		\$ 135.00	\$ 135.00
Sample Preparation			
30 Samples of 09Y. SEIVE -90	at \$ 0.90	\$ 27.00	
Subtotal		\$ 27.00	\$ 27.00
Invoice total:			\$ 282.00 cdc

THIS IS A PROFESSIONAL SERVICE
ACCOUNTS DUE WHEN RENDERED



REPORT: 195-2097

lot 45-383

PROJECT: 7381-50

PAGE: 1

SAMPLE NUMBER	ELEMENT UNITS	PB PPM	ZN PPM	AG PPM	BA PPM
S1 T1-7		34	72	0.4	2100
S1 T1-12		38	70	0.4	2400
S1 T1-17		28	86	0.3	2600
S1 T1-22		34	74	0.6	2400
S1 T1-27		29	80	0.4	2100
S1 T1-32		36	82	0.4	1900
S1 T1-37		36	76	0.5	2100
S1 T1-42		36	60	0.4	2300
S1 T1-47		40	63	0.4	2400
S1 T1-52		41	62	0.7	2200
S1 T1-57		32	80	0.2	1500
S1 T1-62		33	75	0.3	1600
S1 T2-0		40	62	<0.2	1500
S1 T2-5		56	48	0.4	1600
S1 T2-10		59	44	0.4	1500
S1 T2-15		30	43	<0.2	1200
S1 T2-20		52	53	0.3	1400
S1 T2-25		39	49	<0.2	1400
S1 T2-30		63	40	0.2	1500
S1 T2-35		53	36	<0.2	1600
S1 T2-40		60	30	0.4	1500
S1 T2-45		42	42	<0.2	1400
S1 T2-50		26	44	<0.2	1500
S1 T2-55		46	34	0.5	1500
S1 T2-60		60	44	0.4	1600
S1 T2-65		58	41	1.3	1500
S1 T2-70		50	46	0.4	1500
S1 T2-75		48	50	0.6	1600
S1 T2-80		60	44	0.4	1600
S1 T2-85		62	42	0.4	1600

Tom - South Group
 TRENCHING

APPENDIX II

GERALD E. BIDWELL

ADDRESS: 62 Klondike Road,
Whitehorse, Yukon Territory.
Y1A 3M1

EDUCATION: B. A. (Geology)
University of Saskatchewan, 1967.

EMPLOYMENT: 1967 - 1985 - Hudson Bay Exploration and Development Co. Ltd.
1967-70 - mine geology, surface exploration
Snow Lake, Manitoba.
1970-76 - Supervisor of exploration programs
B. C. and Yukon
1976-85 - District Manager, Whitehorse, Y. T.