

ASSESSMENT REPORTS

MAP No. 105 D 3 **TYPE OF WORK:** ROTARY DRILLING AND TRENCHING

REPORT FILED UNDER	ERICKSON GOLD MINES LTD.		
DATE PERFORMED	21 June - 1 August 1985	DATE FILED:	16 August 1985
LOCATION -	LAT.	60°13'W	
	LONG.	135°22'W	
CLAIM Nos.	BUTTE 1-34; YA82680-YA82713		
WORK DONE BY	Erickson Gold Mines Ltd.		
WORK DONE FOR	Erickson Gold Mines Ltd.		
REMARKS	<p style="text-align: center;">Nine rotary drill holes totalling 133 m were completed in 1985 with 293 cubic metres of material taken out.</p>		
091652			
091652			
	40x 85 p. 96 ✓		



ASSESSMENT REPORT
BUTTE # 1 - 34 MINERAL CLAIMS
MOUNT SKUKUM AREA - WHITEHORSE MINING DISTRICT

ROTARY DRILL HOLES AND TRENCHING

NTS 105 D-3

LATITUDE 60 13' NORTH
LONGITUDE 135 22' WEST



By: R. Somerville, P.Eng.

Dated: August 10, 1985



091652

TABLE OF CONTENTS

	<u>Page No.</u>
INTRODUCTION	1
General	1
Location and Access	
Figure #1	2
Figure #2	3
Physiography and Vegetation	1
Land Status Summary	4
 SUMMARY OF WORK	 4
Drilling	4
Trenching	6

POCKET

Figure 3 - Rotary Drill Holes and Trenches
(1985) 1:5000

INTRODUCTION

General

This report discusses and outlines the rotary drilling and trenching which has been done on the Butte 1-34 mineral claims. The property is owned by Erickson Gold Mines Ltd.

Location and Access

The Mount Skukum property is situated in southwestern Yukon at $60^{\circ} 13'$ North latitude and $135^{\circ} 22'$ West longitude on NTS sheet 105D3. Whitehorse is 65 kilometers by air to the northeast.

Road access to the property from Whitehorse is by double lane paved highway for 36 kilometers via the Alaska Highway and the Carcross Road to Robinson. From Robinson, secondary roads are followed for 45 kilometers past Annie Lake and along the Wheaton River to the Butte Creek junction. The final 15 kilometers from this junction to the Mount Skukum Gold Mines trailer camp near the headwaters of Butte Creek was constructed at various times between 1982 and 1984 by AGIP Canada Ltd. and Mount Skukum Gold Mines.

In summer conditions, the total distance of approximately 95 kilometers from Whitehorse to the mine camp can now be covered in a two-wheel drive vehicle in approximately 1 1/2 hours.

The Butte claims in particular are located west of the Second Wheaton River crossing and along the mine access road.

Physiography and Vegetation

The Mount Skukum property covers a large part of the Skukum Tertiary volcanic complex, which forms a block of high ground between the Watson and Wheaton Rivers. The area ranges in elevation from less than 1000

meters in the river valleys to over 2350 meters.

Much of the topography is mountainous with sharp rugged peaks and serrated ridges surrounding glacial cirques, hanging valleys and deep U-shaped valleys. Away from the higher peaks, the topography is much more subdued.

Vegetation in the area is very sparse above 1200 meters. The lower valleys are well-forested with white spruce and lodgepole pine at the lower elevations and alpine fir near treeline. Above treeline, the flora is typically alpine with stunted willows and dwarf birch along creeks at intermediate elevations, and grasses, mosses and alpine plants occupying the floors of the lower cirques and hanging valleys.

Land Status Summary

The expiry dates are listed below for the Butte 1-34 mineral claims. These are the dates that apply until the work described in this report is accepted for assessment credit.

<u>Claim Name</u>	<u>Record Number</u>	<u>Expiry Date</u>
Butte #1-34	YA 82680 - 82713	August 3, 1985

SUMMARY OF WORK

Drilling

Nine rotary drill holes were completed for a total of 435 feet of drill hole. No assays have yet been taken of any of the cuttings but samples have been stored for future processing. All the holes were drilled vertical and the collar locations and depths are listed below (see figure 3).

<u>Hole Number</u>	<u>Northing (m)</u>	<u>Easting (m)</u>	<u>Depth (feet)</u>	<u>Sample Location (feet)</u>
85-1	6675850	482490	60	N.S.
85-2	6675845	482488	300	250-300
85-3	6675609	483110	20	18-19 8-9
85-4	6675624	483222	15	8-9
85-5	6675632	483299	15	8-9 13-14
85-6	6675602	483260	20	8-9 18-19
85-7	6675691	483225	20	8-9 16-17
85-8	6675494	483255	15	8-9 12-13
85-9	6675132	483546	30	8-9 18-19 28-29

The drilling commenced on June 21st, 1985 and was completed by August 1st, 1985.

Trenching

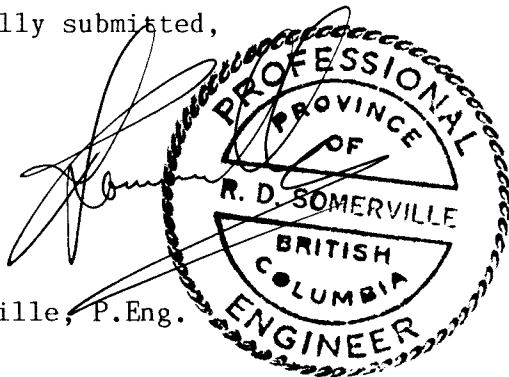
A total of 16 trenches have been completed. A summary of the trenching is listed below.

Trench No.	Northing (m)	Easting (m)	Depth (feet)	Volume (cu.yds.)
85-1	6675610	483082	12	27
85-2	6675460	483148	13	28
85-3	6675628	483174	12	27
85-4	6675625	483258	8	18
85-5	6675640	483304	11	26
85-6	6675631	483331	12	27
85-7	6675638	483375	12	27
85-8	6675683	483274	10	22
85-9	6675684	483227	10	22
85-10	6675617	483547	10	22
85-11	6675518	483256	10	22
85-12	6675498	483230	12	27
85-13	6675700	483182	10	22
85-14	6675724	483155	10	22
85-15	6675603	482896	10	22
85-16	6675562	482917	10	22

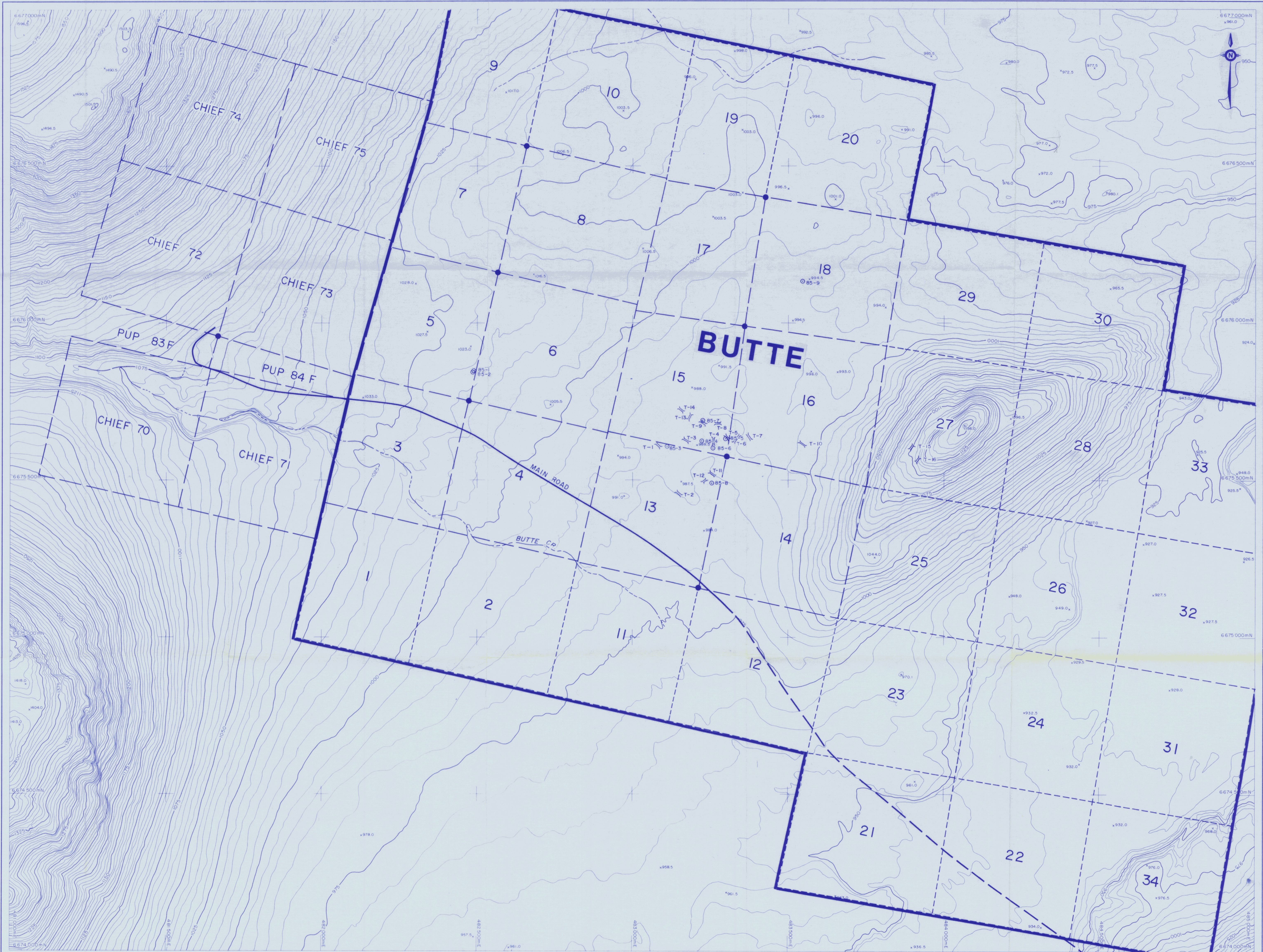
Total Volume

383

Respectfully submitted,



R. Somerville, P.Eng.

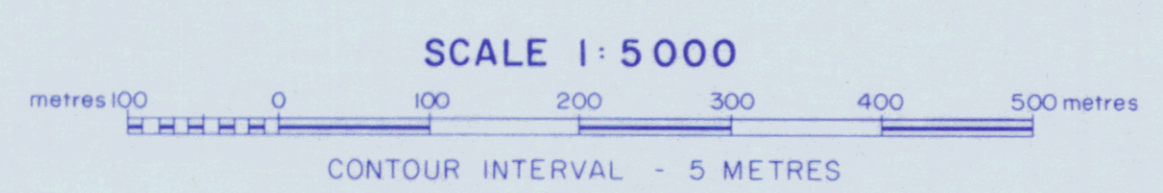


T-5 - 1985 TRENCH

ERICKSON GOLD MINING CORP.
MOUNT SKUKUM

ROTARY DRILL HOLES & TRENCHES (1985)
BUTTE CLAIMS

Compiled by -
THE McELHANNEY GROUP LTD.
in September 1984
from aerial photography taken in Aug
1982. Reference No. 4-0161-0



TO ACCOMPANY A REPORT BY: R. SOMERVILLE, P. ENG.

DATE: AUGUST 10, 1985
FIGURE: 3

