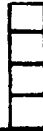


MAP No.

116 B 12

ASSESSMENT REPORT
N. M. E. A. P.
CONFIDENTIAL
OPEN FILE



TYPE OF
WORK:

TOPOGRAPHIC MAPPING

| | | | |
|--------------------|--|--------------|-------------------|
| REPORT FILED UNDER | Uwe Schmidt | DOCUMENT NO. | 091631 |
| DATE PERFORMED | February 1985 | DATE FILED: | February 27, 1985 |
| LOCATION - LAT. | 64°45'N | AREA: | |
| LONG. | 139°45'W | | |
| CLAIM NO. | HARP 1-10 YA64908-YA64917 | | |
| VALUE \$ | | | |
| WORK DONE BY | Eagle Mapping Services Ltd. | | |
| WORK DONE FOR | Uwe Schmidt | | |
| REMARKS | <p>In 1974, Dynasty Explorations discovered and staked the 02 claims over an occurrence of carbonate-hosted lead-zinc mineralization associated with breccias and fractures and of disseminated lead-zinc mineralization in dolomitic argillites and shales. In 1975, Cyprus Anvil diamond drilled three holes totalling 379.48 m and encountered low grade fracture controlled lead-zinc mineralization. The claims subsequently were allowed to lapse and were restaked in February, 1982 as the HARP 1-24 claims.</p> | | |

40x 85 p. 255

091631

In February, 1985 Eagle Mapping Services Ltd. prepared a 1:7500 scale topographic map with 50 foot contours using available government airphotos which was enlarged to 1:5000 scale and is suitable for geological mapping.



REPORT
ON
TOPOGRAPHIC MAPPING
HARP 1-10 MINERAL CLAIM GROUP
DAWSON MINING DISTRICT
YUKON, TERRITORY
NTS 116 B/12
LAT: 64° 45' N. LONG. 139° 45' W.

BY
LWE SCHMIDT, B.Sc.
FEB. 16, 1985



091631



TABLE OF CONTENTS

| | PAGE |
|----------------------------------|------|
| 1. INTRODUCTION | 1 |
| 2. PROPERTY, LOCATION AND ACCESS | 1 |
| 3. HISTORY | 2 |
| 4. WORK CARRIED OUT | 3 |

APPENDIX

Appendix A - Certificate of Qualifications

List of Illustrations

| Fig. No. | | Scale | After Page |
|----------|-----------------|-------------|------------|
| 1 | LOCATION | 1:5,000,000 | 1 |
| 2 | CLAIM MAP | 1:31,680 | 1 |
| 3 | TOPOGRAPHIC MAP | 1:5,000 | in pocket |

1. INTRODUCTION

The Harp claim group was staked as 24 contiguous quartz claims February, 1982. The claims cover surface mineral occurrences of lead and zinc mineralization which were first discovered and staked by Dynasty Explorations in 1974.

Dynasty Explorations carried out surface exploration and geochemical surveys in 1974. This was followed, in 1975, by further geochemical surveys, mapping and limited diamond drilling. No further work was carried out and the property was allowed to lapse in 1982.

The the writer has carried out a literature study of the area from published sources and in February ,1985 commissioned the drawing of a topographic map of the area.

2. PROPERTY, LOCATION AND ACCESS

The Harp claim group was originally staked as the Harp 1-24 claims in February, 1982. The present claim group consists of 10 contiguous claims, Harp # 1-10, located in NTS 116B/12 map area in Dawson Mining District. The claims are jointly owned by the writer and E.M. Jensen of Calgary, Alberta.

Details of the group are as follows:

| <u>Claim Name</u> | <u>Grant Number</u> | <u>Expiry Date</u> |
|-------------------|---------------------|--------------------|
| Harp # 1-10 | YA64908-YA64917 | 18 February 1985 |

The property is located in the headwaters of Coal Creek, a tributary of the Yukon River. This area is approximately 80 km north of Dawson City. The approximate

HARP 1-10

PROPERTY LOCATION

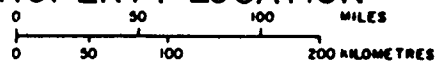
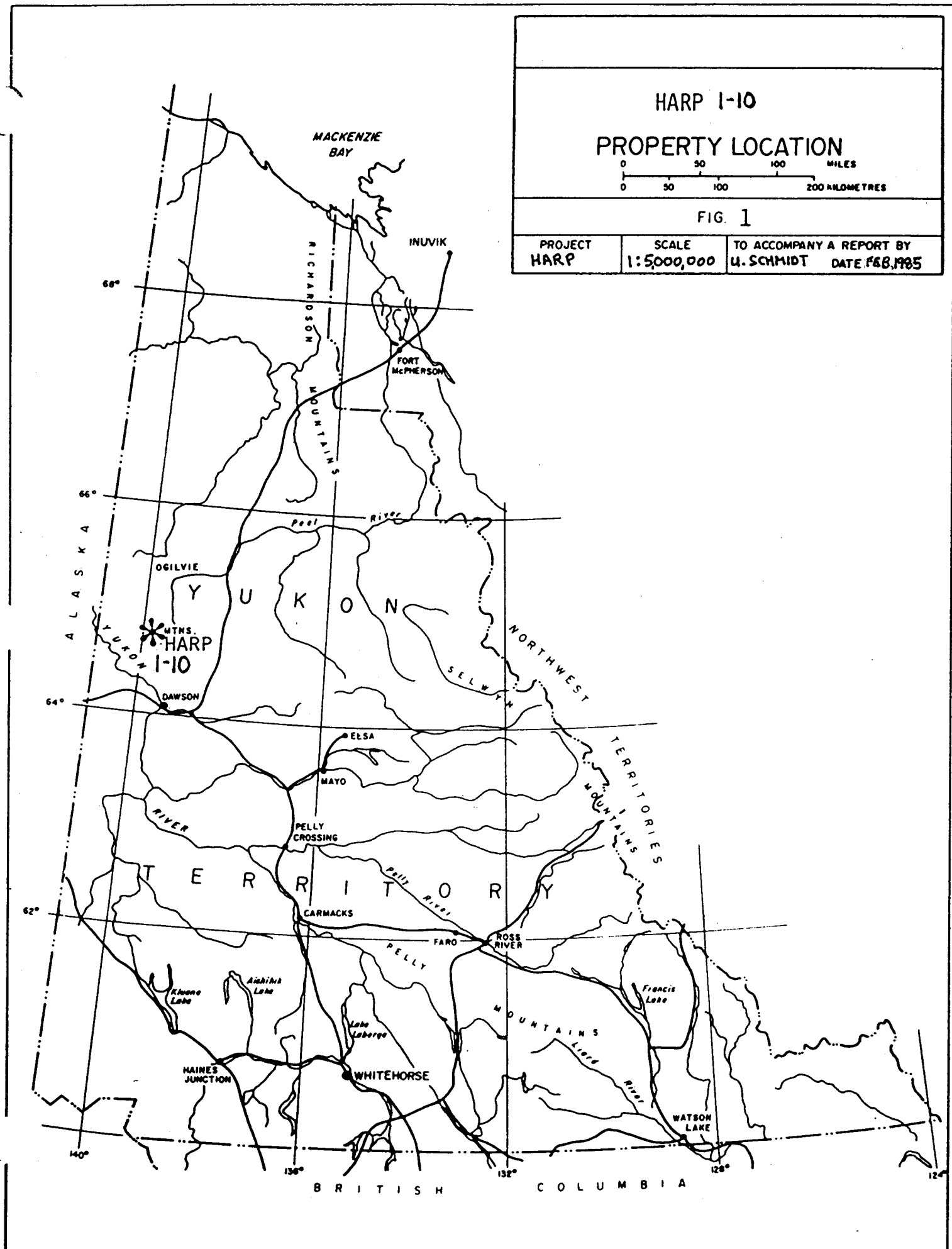
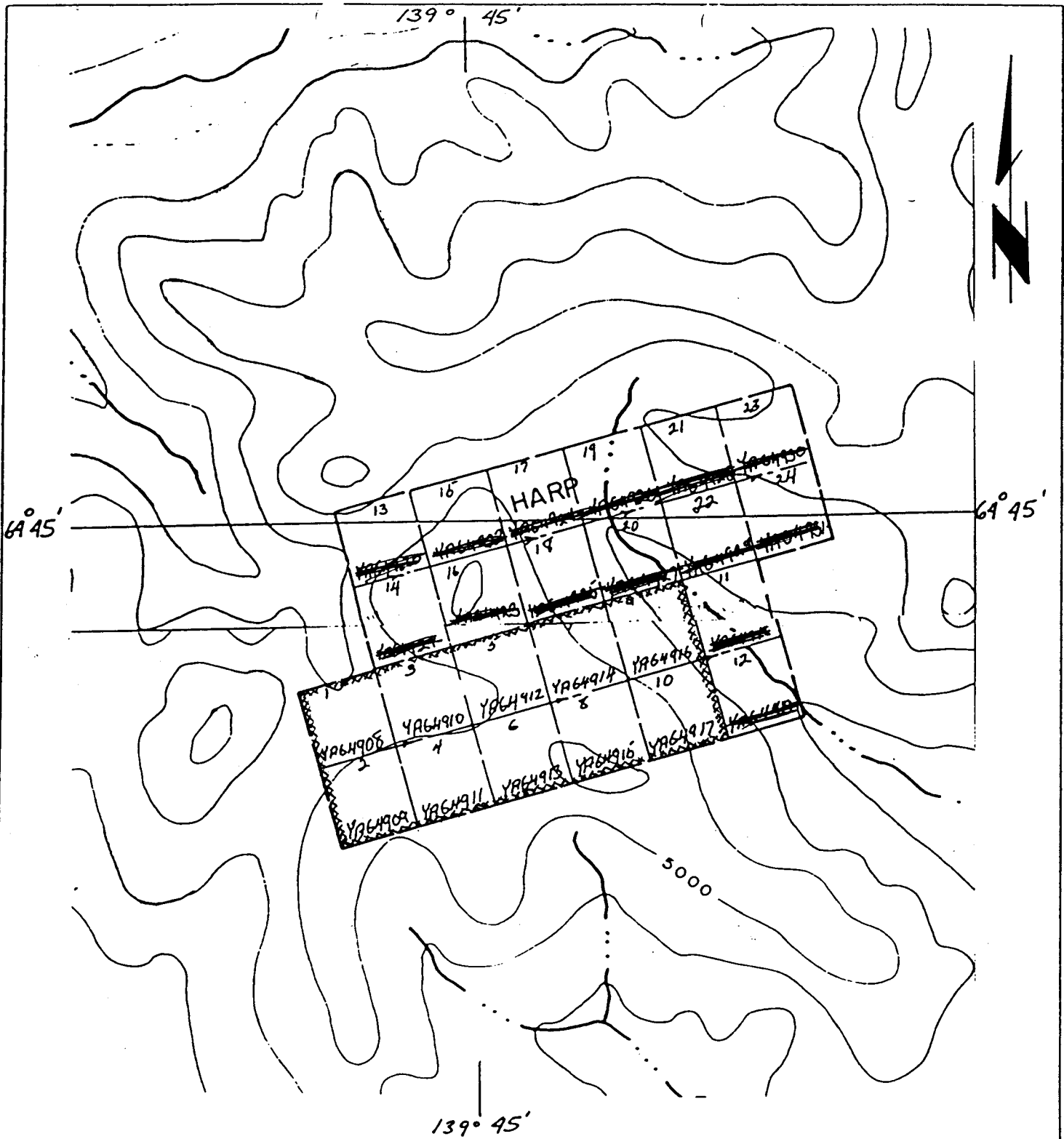


FIG. 1

| | | |
|-----------------|----------------------|---|
| PROJECT HARP | SCALE 1:5,000,000 | TO ACCOMPANY A REPORT BY U. SCHMIDT DATE FEB. 1985 |
|-----------------|----------------------|---|





SCALE: 1/2 MILE TO 1 INCH



HARP I-10

CLAIM MAP
NTS 116B 12 & 13

FIG. 2

PROJECT
HARP

SCALE
1:31,680

TO ACCOMPANY A REPORT BY
U. SCHMIDT DATE FEB. 1985

geographic coordinates of the claims are 64° 44' N. latitude and 139° 45' W. longitude.

The claims are accessible by helicopter from Dawson City. The nearest road connects to the Clinton Creek airstrip, a distance of 56 km southwest of the property. The Dempster highway, lies 65 km to the east.

3. HISTORY

Dynasty Explorations geologists discovered and staked the OZ claims in 1974 during a reconnaissance program which emphasized carbonate-hosted lead/zinc mineralization. Two environments of Pb/Zn mineralization were recognized on the property. One is the carbonate-hosted lead/zinc type which is associated with breccias and fractures. The second is disseminated mineralization hosted by dolomitic argillites and shales.

In 1975, Cyprus Anvil drilled 3 holes totalling 1245 feet. The drilling was intended to test the stratabound, disseminated, shale-hosted mineralization but these lithologies were not intersected. However, the drill holes did encounter low grade, fracture controlled lead/zinc mineralization. ~~was~~

No further work was carried out by Cyprus-Anvil and the claims subsequently lapsed.


In February, 1985, the writer commissioned Eagle Mapping Services Ltd. of Coquitlam, B.C. to produce a 1:5,000 scale topographic map.

4. WORK CARRIED OUT

The writer commissioned Eagle Mapping Services Ltd. of Coquitlam, B.C. to draw a topographic map from available government aerial photographs.

Eagle Mapping Services prepared this map from 1:60,000 scale photos. Photo pair A13135-147 and 148 were used to produce a 1:7,500 scale topographic map with elevations contoured at 50 ft intervals. This map was photomechanically enlarged to 1:5,000 scale on mylar.

Elevation control for the map was taken from 1:50,000 government topographic maps. Fifty foot contours were chosen because elevation contours on all available government topographic maps are in feet and a scale of 1:5,000 was chosen because this is an ideal scale for property mapping. In future, this topography can be drafted onto a corrected photographic base to produce an orthophoto.



Uwe Schmidt, B.Sc.

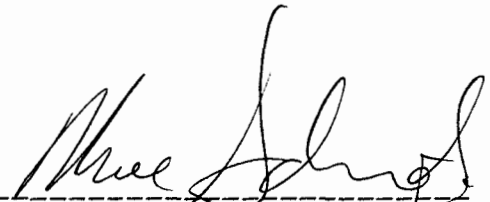
APPENDIX A

CERTIFICATE OF QUALIFICATIONS

I, Uwe Schmidt, of 656 Foresthill Place, Port Moody, B.C. do hereby declare:

- (1) I am a 1971 graduate of the University of British Columbia with a B.Sc. degree in Geology.
- (2) I have practiced my profession continuously since graduation.
- (3) I have managed various mineral exploration projects in the Yukon Territory, British Columbia and Ontario over the past 13 years.

February 16, 1985
Port Moody, B.C



Uwe Schmidt, B.Sc.