

ASSESSMENT REPORTS

Dawson M.D.

MAP No. 115-0 14 TYPE OF WORK: GEOCHEMICAL

REPORT FILED UNDER	Silvercrest Resource Corporation	091629
DATE PERFORMED	May 10-18, 1984	DATE FILED: May 13, 1985
LOCATION - LAT.	63°52'N	<i>Aldorado Creek, Yukon</i>
LONG.	139°17'W	
CLAIM Nos.	VI 16-47	YA65523-YA65554
WORK DONE BY	P.S. White	
WORK DONE FOR	Silvercrest Resource Corporation	
REMARKS	In May, 1984, linecutting and soil sampling (totalling 134 samples) was performed on the VI 22-35 claims at 155 m centers in the NNE direction of location lines and 230 m transverse to location lines. Four hand pits were dug on each of claims VI 27, 37, 40 and 44 and bedrock was sampled. Soil geochemistry was discouraging with localized minimal gold. Eleven samples ranged from 5-10 ppb Au and one sample had 45 ppb Au, but the bulk of samples had below 5 ppb Au.	

091629

REPRESENTATION WORK REPORT
KLONDIKE DISTRICT, YUKON



ON

A PORTION OF THE
VIOLET GOLD-QUARTZ PROPERTY

BEING

VI 16-47 MINERAL CLAIMS
YA 65523 - YA 65554

Lat. $63^{\circ}52'N.$, Long. $139^{\circ}17'W.$

Dawson Mining District
Yukon Territory

NTS Sheet 115 O 14(e)

FOR

SILVERCREST RESOURCE CORPORATION

BY

P.S. WHITE, P.ENG.,
810, 910 Seventh Ave. S.W.
Calgary, Alberta T2P 3N8



17 April, 1985

091629

This report has been examined by
the Geological Evaluation Unit
under Section 53 (4) Yukon Quartz
Mining Act and is allowed as
representation work in the amount
of \$ 4700.00 ..

DAEmond

for Regional Manager, Exploration and
Geological Services for Commissioner
of Yukon Territory.

TABLE OF CONTENTS

	Page
Introduction:	
General History of District	1
Property Status	2
Location and Access	2
Economic Geology	3
Work to Date (10 May, 1984)	5
Representation Work (10 - 18 May, 1984)	6
Summary and Conclusion	7

FIGURES

	No.
Yukon Location Sketch	1
Claim Location Sketch	2
Soil Sample Assay Sheet	3
Soil Sample Field Sketch	4

Certification

Bibliography

INTRODUCTION

General and History of District

The Klondike Placer gold fields are located near Dawson City, Yukon, and comprise an 800 square mile area bounded by the Yukon River, the Klondike River, Flat Creek and Dominion Creek, the Indian River, and the easterly ridge of the tributaries thereto. Almost all the creeks are economic gold bearing of which the most productive ones have been Bonanza and Eldorado. Despite gold-rush era hand mining, major dredging operations, and intermittent heavy equipment re-working of those two rich streams, they are still being worked by bulldozers and other mechanical digging devices in 1985.

Many speculations and some scientific inquiries have been focused on the possible rock sources of the Klondike rich gold gravels, which on many claims measured in ounces of gold per square foot of creek bedrock. Economic placer deposits occurred on creek benches up to 200 feet above the creek bottoms, and the character of the gold nuggets has lead to various theories of concentration from long-term mechanical concentration in stages by erosion of low gold content rock to chemical solution and precipitation of gold and quartz in crystalline nugget form.

Despite the richness of Bonanza and Eldorado Creeks and others in the vicinity, to date no one has established economic ore reserves of gold in place in the district despite the many hard rock gold showings. No great amount of scientific work has been done to relate the in-situ gold showings to the creeks, or to define an irrefutable theory for the source of the fabulous creek deposits. By 1911, fifteen years after the original Bonanza Creek discovery, 35 quartz-gold properties had received prospecting and development potential. Of these, two were placed into small

scale production, the Lone Star Mine between Eldorado and Bonanza Creeks near their confluence, and the nearby VIOLET GROUP which is located on the Southwesterly Ridge of Eldorado Creek near the headwaters of Nugget Gulch and which is the subject of this report.

The Lone Star Mine history is well documented and is the subject of current re-investigation with recently developed engineering and prospecting techniques. The Violet Mine, which was reportedly of higher grade but deeper in source, was relatively poorly documented, and verifiable assay returns are fewer than from the Lone Star. Selections of various reports done by the Geological Survey of Canada geologists in the 1909 - 1912 period, are appended to this report, and are unanimous in the authors uncertainty as to gold origin and the optimism about future discoveries of economic gold concentrations on the properties.

PROPERTY OWNERSHIP

The Violet Group consists of 47 claims, each 1500 feet square and 51.6 acres, re-located in 1981 and 1983 by Yukon prospectors and transferred to Silvercrest Resource Corporation (75%) and P.S. White, P.Eng., (25%). The anniversary date of the claims are shown below, and the annual work requirements (or cash paid in lieu) is \$100/claim or \$4700 for the Group. The claims are located under the Yukon Quartz Mining Act.

VI 1-15	YA55285-YA55299	May 22, 1985
VI 16-47	YA65523-YA65554	May 20, 1985

LOCATION AND ACCESS

The property is located approximately 16 miles southeasterly

from Dawson City, at 3000 ft. above sea level, on the southeasterly ridge to Eldorado Creek (left limit), 1 mile S.W. of the mouth of Gay Gulch. Access is by all-weather road (or air) to Dawson City from Whitehorse (335 road miles), thence, by gravel highway, 16 miles up the Bonanza - Eldorado Creek road. Seasonal tractor trail access is possible from Nugget Gulch or from Chief Gulch (tributary to Upper Eldorado Creek), thence N.W. along the Eldorado left limit ridge to the property. Snow fall is variable annually, and the property has a light cover of moss and underlying permafrost, 2-6' deep. The claim group has some scrub spruce timber, but the showing area at the headframe is relatively free of vegetation cover.

The location of the centre of the property is approximately $63^{\circ}52'N$. Lat., $139^{\circ}17'W$. Long. on NTS Map Sheet 115 0 14(e).

ECONOMIC GEOLOGY

The general geology of the district is of quartz lenses and veins and variety of fault zones in old (Pre Cambrian?) Klondike schists. The gold occurrences are as native gold, usually with sulfides (galena, chalcopyrite and pyrite) in the quartz veins, and in schists at the contacts of the gold bearing veins. (See Folder report extracts.)

The Violet property is described by R.J. Cathro as an assemblage of strong, white quartz-barite veins, striking easterly or southeasterly and dipping 80° S. which bears gold with minor common sulfides. The workings are substantially caved and frozen, and cannot be entered. Occasional sampling of surface trenches and dumps by visiting geologists have given low grade gold values with occasional exceptions, which is a common

historical feature of the district. Bulk sampling, (5-10 tons), appears to be the only method to evaluate the Klondike gold showings as evidenced by the well documented nearby Lone Star Mine, which produced smelter returns in the order of 3 - 4 times the normal chip and channel samples, and indicated mine head assays of 0.20 - 0.25 oz./ton Au, calculated from smelter returns. This strong vein system, which is of mineable width, and with the normal gold content of the wall rocks, can provide economic ore reserves at 0.20 - 0.30 oz./ton. The vein can be traced for hundreds of feet, on surface its lineament feature is believed to extend some thousand of feet.

A compelling feature of the Violet property is the occurrence of a high coarse nugget fraction of recoverable gold from sluicing operations in nearby Nugget Gulch. Placer miners in 1981 and 1982 obtained coarse nuggets, quartzite and generally angular, from the gulch bottom, which were 75% coarse (+16 Mesh) and up to $\frac{1}{2}$ Troy ounce in size. Topography and nugget surfaces encourage one to postulate that they originated from weathering of the Violet vein system, and not from White Channel gravel reconcentration.

The mining history of the Violet group stops at 1907 - 1910 when gold was priced at \$20.67/ounce. The gold mined from Eldorado Creek and Nugget Gulch in the immediate vicinity assays 70%+ Au, 20%+ Ag, and 5-10% impurities. The Violet group has not been explored, drilled or bulk-sampled since 1907, and the reported assay values of up to 0.5 oz./ton Au, combined with the wide, steep dipping mineable vein system, encourage large core diamond drilling to depths of 500-1000', and stripping of the vein system for surface bulk sampling, to test the property for gold values sufficient to warrant an underground program.

WORK TO DATE (10 MAY, 1984)

The property was originally staked in 1901, developed underground in 1902 - 1905, and bulk samples were transported from the mine via 3500 feet tramway to a cyanide mill on nearby Ophir Creek. The property was sold at public auction in 1907, and no record of mining can be located by the author after that date. The Crown Grants reverted to the Crown, and the property was re-staked in 1947 and at various times thereafter, with no evidence of any exploration mining work by the various locators.

A wooden headframe stands at the main shaft, and traces of the old open cuts and trenches are easily discernible on the ground. In 1979, 1980 and 1981, the author visited the property, once with R.J. Cathro, P.Eng., and examined the workings and the geology as evidenced by the small dumps and caved trenches. The property was staked by M. Woods and M. Barker of Whitehorse in May 1981, and acquired from them shortly after. The property was aerially photographed in June 15, 1981 and at ground scales of 1000' = 1" and 2000' = 1", and various enlargements and a mosaic were made from the mapping quality photographs. Northwest Survey Ltd. of Whitehorse and Edmonton were contractors, and a regional control survey for ortho photo mapping was performed by them in July and August, in conjunction with an exploration and mapping program on the Lone Star Mine property by Dawson Eldorado Gold Explorations Ltd.

On 10 May, 1983, Steven Smith and Eric Huggard, prospectors, were engaged to perform vein mapping, soil sampling, line cutting and vein rock chip sampling. A total of 68 soil samples were taken, and approximately 1/3 of the soil samples were re-taken in late May, after north slope thawing permitted better digging. The results were shown on assay sheets as

File Nos. 25036 and 25035 of Loring Laboratories Ltd. of Calgary, Alberta.

The prospectors field sketches were enclosed to locate sites of soil samples.

The soil samples were taken in two areas. Location Lines of the VI 1-15 claims were sampled at 500' intervals (33 samples, 16 stations per location line), and the claim posts were tagged in the process. A detailed grid was established and soil samples were taken at 100 meter intervals on a cut grid centred on the VIOLET MAIN SHAFT. On the VIOLET No. 4 mineral claim, 35 soil samples were taken on the detailed grid and assayed by Loring Labs. Ltd.

The vein was located on the ground and rough sketched on the location maps. Old pits and trenches were located, cleaned out and bed rock examined. Seven rock samples were taken for assay and were assayed by Loring Labs.

The result of the 1983 Sampling Program were reported in a Representation Work Report dated 17 September, 1983.

REPRESENTATION WORK 10 MAY - 18 MAY, 1984

Line cutting and soil sampling were performed on the VI 22-35 mineral claims at 500' centres in the direction of the location lines (NNE), and 750' transverse to the location lines. A total of 134 samples were taken, from ground that was partially frozen in discontinuous patterns. VI claims 16-21, 36 to 39, and 45-47 were frozen throughout and were not sampled. Hand pits were dug at 4 locations at the approximate centres of claims VI 27, 37, 40, 44 to examine bed rock

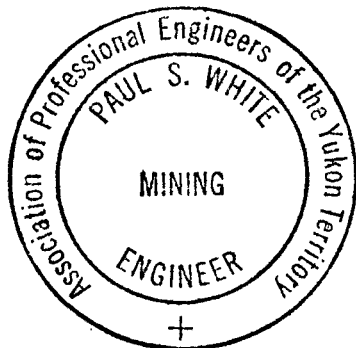
and to secure rock specimens. The rock samples were not assayed, but retained for library filing.

The soil samples were assayed by Bondar-Clegg at Vancouver, B.C., and returned occasional minimal gold indications in the 5-10 Au p.p.b., (11 samples), and one sample of 45 p.p.b. at the SE corner of VI 1. The balance of the samples returned less than 5 p.p.b. Au.

A total of \$6678.76 was spent on the project.

CONCLUSIONS

The 1984 soil sampling program was generally negative, and returned no significant gold values that had not been discovered in previous work. Soil sampling in May in the Klondike District, in partially frozen ground, is not recommended for future prospecting. The Violet vein system is strong enough to examine by bulldozer trenching and chip sampling, and is easily traced on the ground. It is recommended that certain core claims be retained and examined by bulldozer stripping in 1985, and that the retained claims straddle the strike and ground expression of the Violet main quartz vein structure. Drilling of the quartz vein itself to 100 feet depth to verify unsubstantiated gold values of the original Violet mine work is recommended, if funds are available.



Respectfully submitted,
SILVERCREST RESOURCE CORPORATION

Paul S. White
Paul S. White, P.Eng.
Paul S. White

April 17, 1985

SILVERCREST RESOURCE CORPORATION

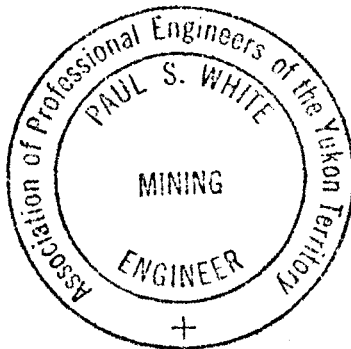
Exploration Costs - VI Claims
May 10 - 18, 1984

Wages - May 10 to May 18

Eric Huggard	9 days @ \$150.00	\$ 1350.00
Steve Smith	9 days \$ \$150.00	1350.00
Camp Supplies		401.24
Field Supplies		715.02
Assays		912.50
Truck Rental 9 Days \$ \$50.00		450.00
Supervision and Overhead		1000.00
Report		<u>500.00</u>
		\$ 6678.76

I, Paul S. White, Professional Engineer, certify that I supervised the work described in the Report covering this Statement of Expenditures between the dates of May 10 - 18, 1984, and that the charges listed above were incurred as stated and as per the attached vouchers of expense accompanying this certificate.

Certified at Calgary, Alberta,
this 17th Day of April, 1985.



Paul S. White
Paul S. White, P.Eng.
Paul S. White

BIBLIOGRAPHY

- | | | |
|---|---------------------------------|------|
| 1. LODE MINING IN YUKON | T.A. McLean, | 1914 |
| 2. YUKON TERRITORY - SUMMARY REPORT..... | R.W. Brock, | 1909 |
| 3. QUARTZ MINING IN THE KLONDIKE DISTRICT.. | D.D. Cairnes, | 1911 |
| 4. HEAVY METAL STUDIES IN THE KLONDIKE | C.F. Gleeson, | 1970 |
| 5. MINING INDUSTRY OF YUKON-ANNUAL REPORT.. | W.E.Cockfield, | 1929 |
| 6. UNPUBLISHED DATA | P.S. White &
Various Authors | |

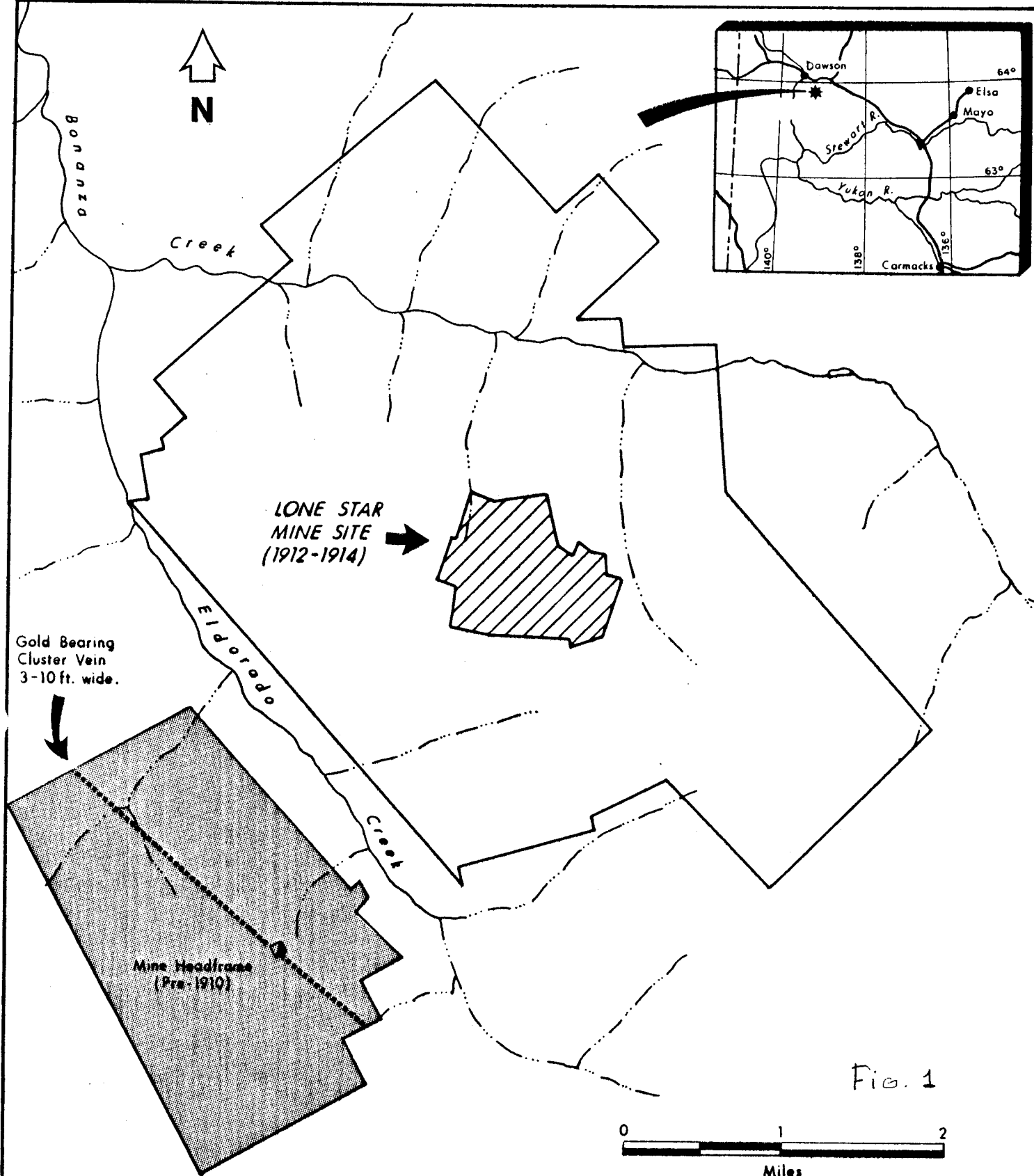
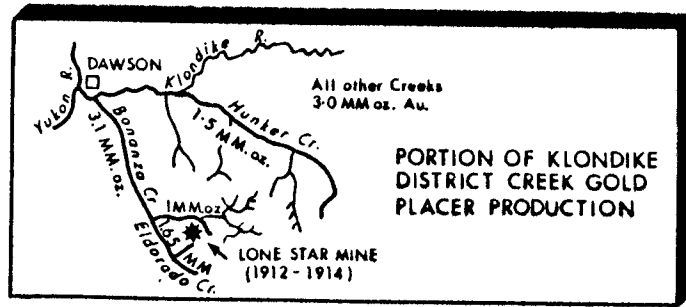
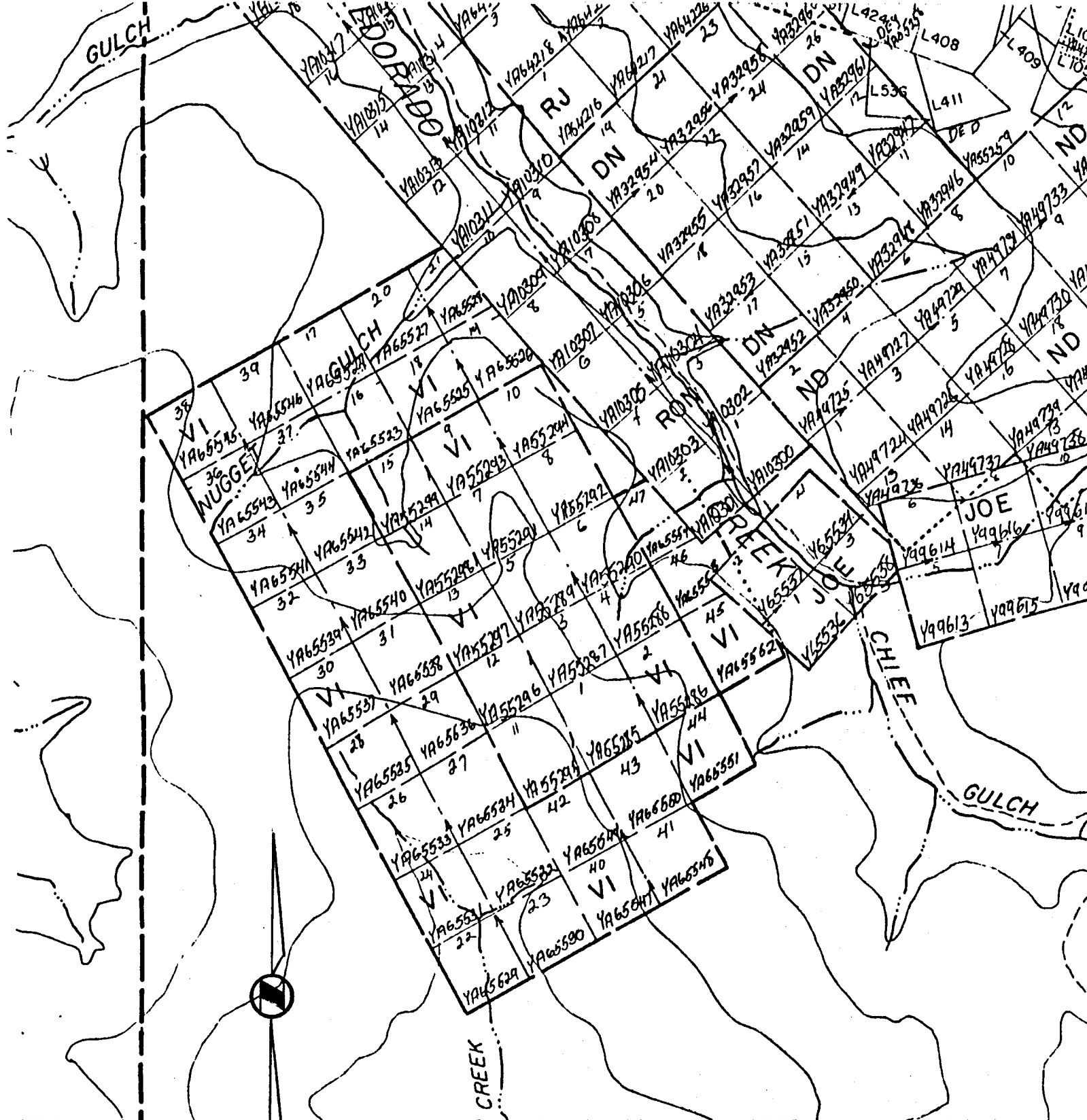


Fig. 1



SILVERCREST RESOURCE CORPORATION
VIOLET CLAIM GROUP
YUKON TERRITORY



0-14c

VIOLET CLAIM GROUP
 from 115 -0-14 e , Yukon
 (Revised Oct 13, 1983)

SCALE: 1: 31,680

DATE: 1985-05-08

FIG. 2

SOIL SAMPLE ASSAYS SHEETS

TO ACCOMPANY

REPRESENTATION WORK REPORT

ON

A PORTION OF THE

VIOLET GOLD-QUARTZ PROPERTY

BEING

VI 16-47 MINERALS CLAIMS

17 April, 1985

Bondar-Clegg & Company Ltd.
130 Pemberton Ave.
North Vancouver, B.C.
Canada V7P 2R5
Phone: (604) 985-0681
Telex: 04-352667



BONDAR-CLEGG

**Geochemical
Lab Report**

REPORT: 124-0865

FROM: DAWSON ELDORADO GOLD EXPLORATIONS LTD.
DATE: 31-MAY-84 PROJECT: VIOLET

SUBMITTED BY: BCC WHSE

ORDER	ELEMENT	LOWER DETECTION LIMIT	EXTRACTION	METHOD	SIZE FRACTION	SAMPLE TYPE	SAMPLE PREPARATIONS
01	Au	5 PPB	AQUA REGIA	Fire Assay AA	-80	SOILS	DRY, SEIVE -80

REPORT COPIES TO: MR. PAUL WHITE

INVOICE TO: MR. PAUL WHITE

REMARKS: BCC WHSE RPT# 44-39
VIOLET PROPERTY

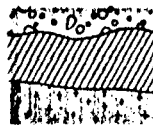


REPORT: 124-0865

PROJECT: VIOLEY

PAGE 2

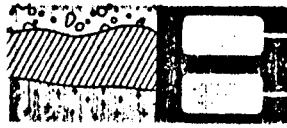
SAMPLE NUMBER	ELEMENT UNITS	Au PPB	NOTE	SAMPLE NUMBER	ELEMENT UNITS	Au PPB	NOTE
S 44-39-SS-21		<5		S 44-39-SS-66		<5	
S 44-39-SS-22		<5		S 44-39-SS-67		10	
S 44-39-SS-23		<5		S 44-39-SS-68		5	
S 44-39-SS-24		<5		S 44-39-SS-69		<5	
S 44-39-SS-25		<5		S 44-39-SS-70		<5	
S 44-39-SS-26		<5					
S 44-39-SS-27		<5					
S 44-39-SS-28		<5					
S 44-39-SS-29		<5					
S 44-39-SS-30		<5					
S 44-39-SS-31		<5					
S 44-39-SS-32		<5					
S 44-39-SS-33		<5					
S 44-39-SS-34		<5					
S 44-39-SS-35		<5					
S 44-39-SS-37		<5					
S 44-39-SS-38		<5					
S 44-39-SS-39		<5					
S 44-39-SS-40		<5					
S 44-39-SS-41		<5					
S 44-39-SS-42		<5					
S 44-39-SS-43		<5					
S 44-39-SS-44		<5					
S 44-39-SS-45		<5					
S 44-39-SS-46		<5					
S 44-39-SS-47		<5					
S 44-39-SS-48		<5					
S 44-39-SS-52		<5					
S 44-39-SS-53		<5					
S 44-39-SS-54		<5					
S 44-39-SS-55		<5					
S 44-39-SS-56		<5					
S 44-39-SS-57		<5					
S 44-39-SS-58		<5					
S 44-39-SS-59		<5					
S 44-39-SS-60		<5					
S 44-39-SS-61		<5					
S 44-39-SS-62		<5					
S 44-39-SS-63		5					
S 44-39-SS-65		<5					



REPORT: 124-0865

PROJECT: VIOLET PAGE 1

SAMPLE NUMBER	ELEMENT UNITS	Au PPB	NOTE	SAMPLE NUMBER	ELEMENT UNITS	Au PPB	NOTE
S 44-39-EH-1		<5		S 44-39-EH-41		<5	
S 44-39-EH-2		<5		S 44-39-EH-42		<5	
S 44-39-EH-3		<5		S 44-39-EH-43		<5	
S 44-39-EH-4		<5		S 44-39-EH-45		<5	
S 44-39-EH-5		<5		S 44-39-EH-46		<5	
S 44-39-EH-6		<5		S 44-39-EH-47		5	
S 44-39-EH-7		<5		S 44-39-EH-48		<5	
S 44-39-EH-8		<5		S 44-39-EH-49		<5	
S 44-39-EH-9		<5		S 44-39-EH-50		<5	
S 44-39-EH-10		<5		S 44-39-EH-51		<5	
S 44-39-EH-11		<5		S 44-39-EH-52		<5	
S 44-39-EH-12		<5		S 44-39-EH-53		<5	
S 44-39-EH-13		<5		S 44-39-EH-54		<5	
S 44-39-EH-14		<5		S 44-39-EH-55		<5	
S 44-39-EH-15		<5		S 44-39-EH-57		<5	
S 44-39-EH-16		<5		S 44-39-EH-58		<5	
S 44-39-EH-17		<5		S 44-39-EH-59		<5	
S 44-39-EH-18		<5		S 44-39-EH-60		<5	
S 44-39-EH-19		5		S 44-39-EH-61		<5	
S 44-39-EH-20		15		S 44-39-EH-62		<5	
S 44-39-EH-21		<5		S 44-39-EH-63		<5	
S 44-39-EH-22		<5		S 44-39-EH-64		<5	
S 44-39-EH-23		<5		S 44-39-SS-1		45	
S 44-39-EH-24		10		S 44-39-SS-2		<5	
S 44-39-EH-25		<5		S 44-39-SS-3		10	
S 44-39-EH-26		<5		S 44-39-SS-4		<5	
S 44-39-EH-27		<5		S 44-39-SS-5		<5	
S 44-39-EH-28		<5		S 44-39-SS-6		<5	
S 44-39-EH-29		<5		S 44-39-SS-7		<5	
S 44-39-EH-30		<5		S 44-39-SS-8		<5	
S 44-39-EH-31		<5		S 44-39-SS-9		5	
S 44-39-EH-32		<5		S 44-39-SS-10		<5	
S 44-39-EH-33		<5		S 44-39-SS-11		<5	
S 44-39-EH-34		<5		S 44-39-SS-12		<5	
S 44-39-EH-35		<5		S 44-39-SS-13		<5	
S 44-39-EH-36		5		S 44-39-SS-14		<5	
S 44-39-EH-37		<5		S 44-39-SS-15		<5	
S 44-39-EH-38		<5		S 44-39-SS-16		<5	
S 44-39-EH-39		<5		S 44-39-SS-17		<5	
S 44-39-EH-40		<5		S 44-39-SS-20		10	

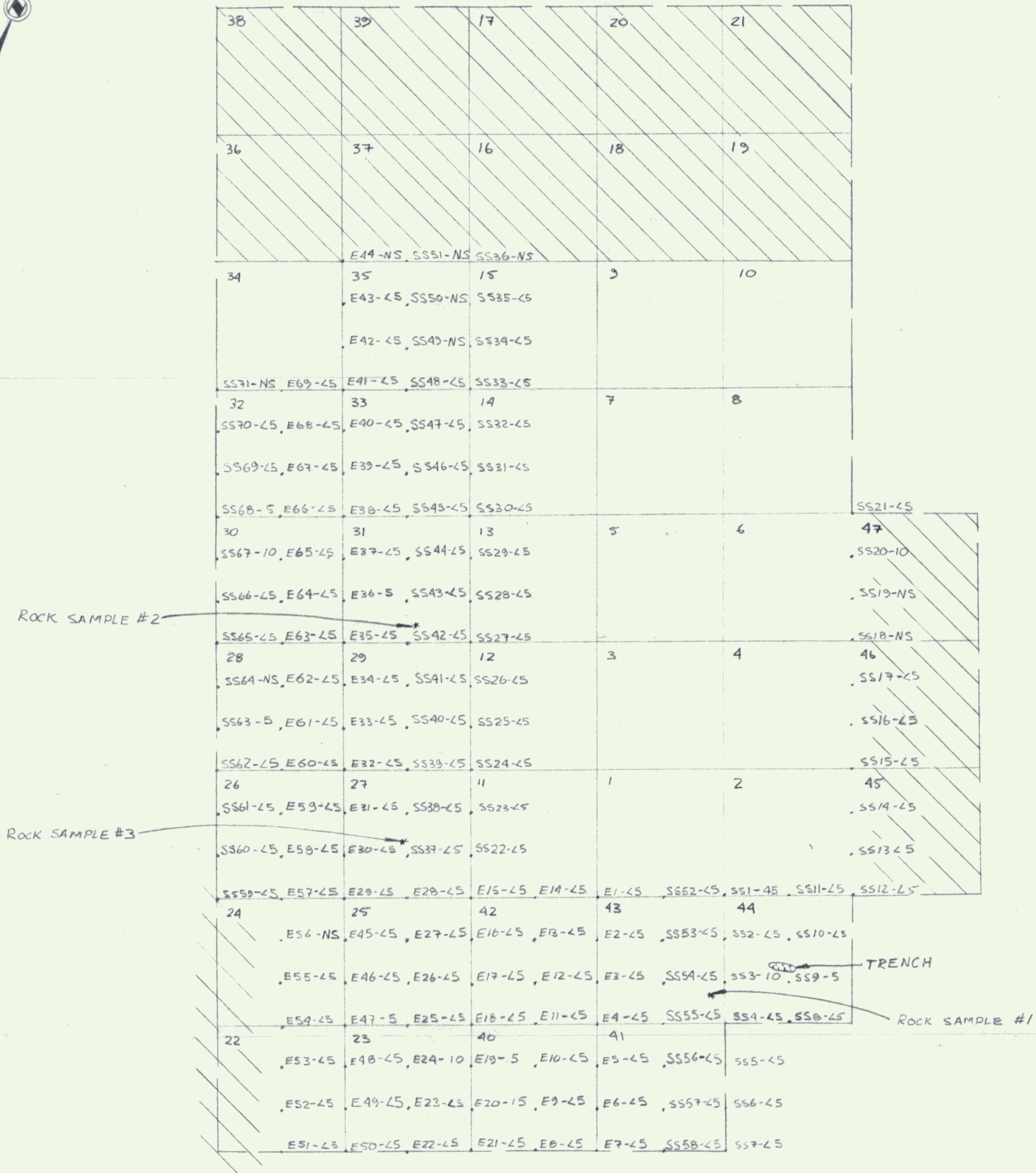


REPORT: 124-0865

PROJECT: VIOLET

PAGE 1

SAMPLE NUMBER	ELEMENT UNITS	Au PPB	NOTE	SAMPLE NUMBER	ELEMENT UNITS	Au PPB	NOTE
S 44-39-EH-1		<5		S 44-39-EH-41		<5	
S 44-39-EH-2		<5		S 44-39-EH-42		<5	
S 44-39-EH-3		<5		S 44-39-EH-43		<5	
S 44-39-EH-4		<5		S 44-39-EH-45		<5	
S 44-39-EH-5		<5		S 44-39-EH-46		<5	
S 44-39-EH-6		<5		S 44-39-EH-47		5	
S 44-39-EH-7		<5		S 44-39-EH-48		<5	
S 44-39-EH-8		<5		S 44-39-EH-49		<5	
S 44-39-EH-9		<5		S 44-39-EH-50		<5	
S 44-39-EH-10		<5		S 44-39-EH-51		<5	
S 44-39-EH-11		<5		S 44-39-EH-52		<5	
S 44-39-EH-12		<5		S 44-39-EH-53		<5	
S 44-39-EH-13		<5		S 44-39-EH-54		<5	
S 44-39-EH-14		<5		S 44-39-EH-55		<5	
S 44-39-EH-15		<5		S 44-39-EH-57		<5	
S 44-39-EH-16		<5		S 44-39-EH-58		<5	
S 44-39-EH-17		<5		S 44-39-EH-59		<5	
S 44-39-EH-18		<5		S 44-39-EH-60		<5	
S 44-39-EH-19		5		S 44-39-EH-61		<5	
S 44-39-EH-20		15		S 44-39-EH-62		<5	
S 44-39-EH-21		<5		S 44-39-EH-63		<5	
S 44-39-EH-22		<5		S 44-39-EH-64		<5	
S 44-39-EH-23		<5		S 44-39-SS-1		45	
S 44-39-EH-24		10		S 44-39-SS-2		<5	
S 44-39-EH-25		<5		S 44-39-SS-3		10	
S 44-39-EH-26		<5		S 44-39-SS-4		<5	
S 44-39-EH-27		<5		S 44-39-SS-5		<5	
S 44-39-EH-28		<5		S 44-39-SS-6		<5	
S 44-39-EH-29		<5		S 44-39-SS-7		<5	
S 44-39-EH-30		<5		S 44-39-SS-8		<5	
S 44-39-EH-31		<5		S 44-39-SS-9		5	
S 44-39-EH-32		<5		S 44-39-SS-10		<5	
S 44-39-EH-33		<5		S 44-39-SS-11		<5	
S 44-39-EH-34		<5		S 44-39-SS-12		<5	
S 44-39-EH-35		<5		S 44-39-SS-13		<5	
S 44-39-EH-36		5		S 44-39-SS-14		<5	
S 44-39-EH-37		<5		S 44-39-SS-15		<5	
S 44-39-EH-38		<5		S 44-39-SS-16		<5	
S 44-39-EH-39		<5		S 44-39-SS-17		<5	
S 44-39-EH-40		<5		S 44-39-SS-20		10	



LEGEND

- FROZEN GROUND
 - NS - NO SAMPLES
 - SS#- - S. SMITH SAMPLES
 - E#- - E. HUGGARD SAMPLES
- NOTE: ALL SOIL ASSAYS IN P.P.B.

DAWSON ELDORADO GOLD EXPLORATIONS LTD. YUKON 115-0-14 E		
1984 SOIL SAMPLING PROGRAM VIOLET GROUP, DAWSON DIST. YUKON		
SCALE: 1" = 1000' (Approx)	DWN BY: J.A.J.	SHEET: 1
DATE: 1985-05-08	FILE:	OF: 1

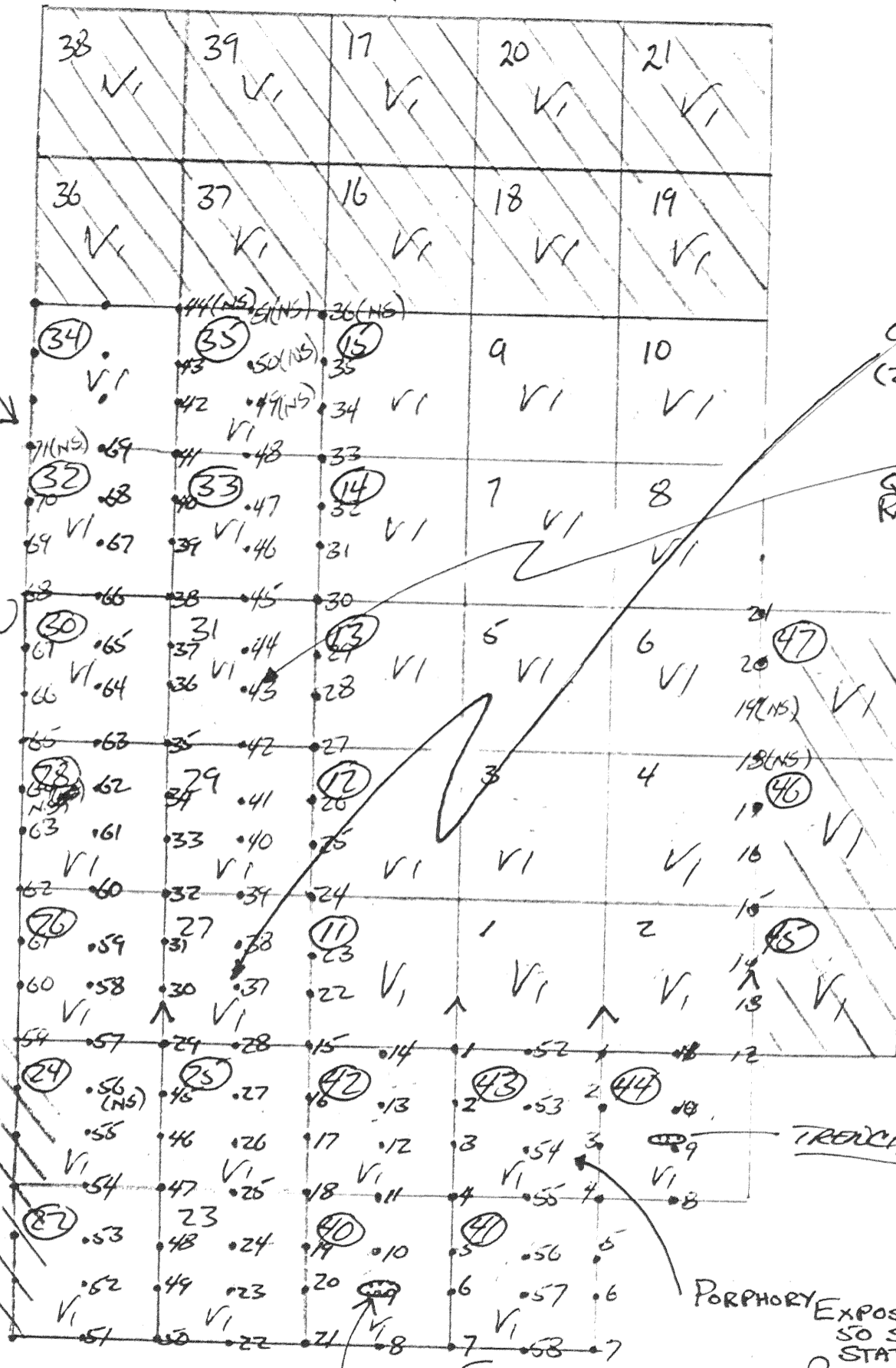
1984. VIOLET. CLAIMS.

SCALE: 1" = 1500' (APPROX)

SOIL SAMPLING GRID.

MAY 9-17 1984

091629



QUARTZ FLOAT.
ROCK SAMPLE #3
(250' OF SS-37)

ABUNDANT
QUARTZ FLOAT
ROCK SAMPLE #2

THESE LINES CONVERGED.
WITH CLAIM LINE @ THIS POINT.

TRENCH

PORPHYRY EXPOSED.
50 SW OF
STATION SS-3
ROCK SAMPLE #1

FROZEN.

VIOLET CLAIM
SAMPLING 1984

N.S. - NO SAMPLE.

ALL SS SAMPLES IN BLUE.
ALL E.H. SAMPLES IN BLACK.

J. Smith May 17/1984
Eric Chagnon