

ASSESSMENT REPORTS

Whitehorse M.D.

MAP No. 105-D-14 TYPE OF WORK: Diamond Drilling

REPORT FILED UNDER	G. Macdonald L. Patnode
DATE PERFORMED	August 18 - 22, 1982 DATE FILED: April 17, 1985
LOCATION - LAT.	60° 49' N
LONG.	135° 14' W
CLAIM Nos.	MURIEL 1-2 YA8889 - YA8890
WORK DONE BY	G. Macdonald
WORK DONE FOR	G. Macdonald & Assoc. Ltd. L. Patnode
REMARKS	<p>In 1982, two AQ wireline diamond drill holes, totalling 137.16 m were drilled. Grey to maroon siltstone and/or argillite (probably of the Lewes River Group) were found to be underlain by fine-to medium-grained dark grey green diorite with local epidotization. Minor veinlets of calcite up to 4 cm wide and containing traces of galena crosscut the sedimentary rocks.</p> <p>MEX 85 p. 106 ✓</p>

184-MURIEL
091623

DATE DUE



DIAMOND DRILL ASSESSMENT REPORT

ON

MURIEL 1-2 MINERAL CLAIMS

YA 8889 - YA 8890

NTS CLAIM SHEET 105D-14

60° 49'N/135° 14'W

G. Macdonald, P.Geol.

April 15, 1985

091623

TABLE OF CONTENTS

Introduction

Location and Access

Drill Program (1982)

Summary

LIST OF FIGURES

Figure 1 Location Plan

LIST OF TABLES

Table 1 Diamond Drill Hole No 2 Log.

APPENDIX

Statement of Qualifications

Statement of Costs

INTRODUCTION

This report was prepared at the request of Mr. Larry Patnode to review diamond drill core from a program of drilling conducted in August 1982 on the Muriel 1-2 Mineral claims. The author visited the drill project accompanied by Mr. Patnode August 20, 1982.

LOCATION AND ACCESS

The Muriel 1-2 Mineral claims are centered approximately $60^{\circ}49'N/135^{\circ}14'W$ on NTS claim sheet 105D-14. The property is accessible via a tote trail departing the Alaska Highway approximately 1 mile north of the junction of the Klondike Highway with the Alaska Highway. See figure 1 for claim locations.

DRILL PROGRAM

The 1982 Diamond Drill program at the Mineral claims consisted of two AQ wireline bore holes totaling approximately 450 feet of coring. The drill was supplied by Aloss Holdings Ltd. of Whitehorse, Y.T. A log of drill hole No 2 is included as Table 1 of this report as claimed for assessment credit. Core is stored in Whitehorse, Y.T.

CLAIM LOCATION PLAN
MURIEL 1-2 CLAIMS

NTS 105D-14

1" = 1/2 MILE

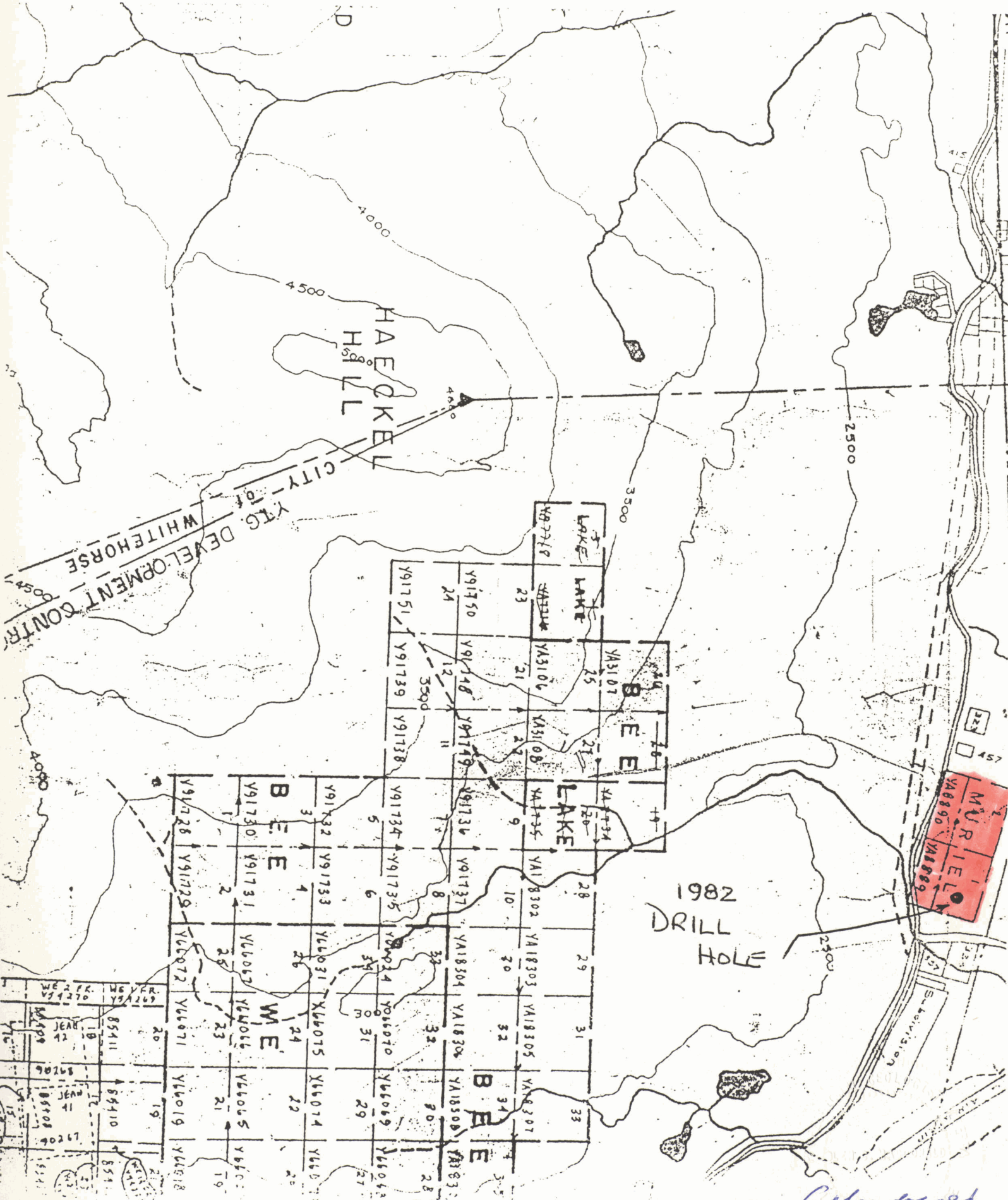


TABLE 1

DIAMOND DRILL LOG

DDH 2

Started : 18 August 1982

Finished: 22 August 1982

Core Size : AQ Wireline

Drill : BBS - 1

Footage

From To

0 - 7 Overburden

7 - 144 SILTSTONE-ARGILLITE - Grey to Maroon siltstone and/or argillite (Iewes River Series). Bedding angles are generally 70° - 80° to core axis. Calcite forms small occasional veinlets up to 4cm wide usually cross cutting bedding planes at an oblique angle. For several feet above the contact the siltstones have a matted or porphyrite appearance. Very occasional specks of galena are present in some of the calcite veinlets.

144-269 DIORITE - Fine to medium grained dark grey-green diorite; occasional alteration of mafics to epidote immediately below the contact. Mafics are predominantly hornblende laths to 1 cm long with subordinate amounts of biotite.

269 End of hole

Core recovery : 90%

SUMMARY

Two wireline diamond drill bore holes were completed at the Muriel 1-2 mineral claims during 1982. Core from DDH-2 was examined and logged as a part of the project. No core was submitted for assay from this hole.

Respectfully Submitted,

A handwritten signature in cursive script, appearing to read "G. Macdonald".

G. Macdonald, P. Geol.

APPENDICES

G. MACDONALD AND ASSOCIATES LIMITED
Consulting Professional Geologists

4 Hyland Crescent
Whitehorse, Y.T.
Y1A 4P6

(403) 668-2044

(403) 667-7229

CERTIFICATE OF QUALIFICATIONS

I, Glen C. Macdonald, with business and residential address in Whitehorse, Yukon, do hereby certify that:

- 1.- I am a consulting professional geologist.
- 2.- I am a graduate of the University of British Columbia (B.Sc. Geology, 1973 and B.A. Economics 1971).
- 3.- I am registered as a Professional Geologist by the Association of Professional Engineers, Geologists and Geophysicists of Alberta (No. 36214).
- 4.- I am registered as a Professional Geologist by the Association of Professional Engineers, Geologists and Geophysicists of the Northwest Territories (No. L-166).
- 5.- I am a member in good standing of the Canadian Institute of Mining and Metallurgy.
- 6.- I have practiced Mining and Exploration geology in Yukon, northern British Columbia and Northwest Territories since 1973. I began private practice in 1982 after leaving the position of Regional Geologist for Noranda Exploration Company Limited, Whitehorse, Yukon.

DATED at Whitehorse, Yukon this 1st day of November, 1984.

G. Macdonald
12-4-85

Glen C. Macdonald, P. Geol