

ASSESSMENT REPORTS

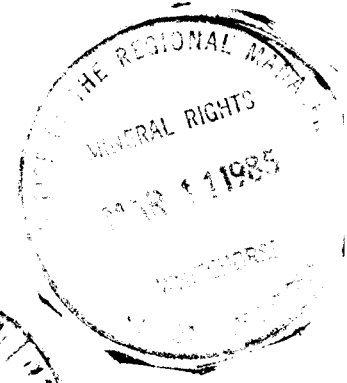
MAP No. 105 A 7.10 **TYPE OF WORK:** GEOCHEMICAL

REPORT FILED UNDER	Canamax Resources Inc.		
DATE PERFORMED	Aug. 2-20, 1984	DATE FILED:	March 4, 1985
LOCATION - LAT.	60°32'N		
LONG.	128°53'W		
CLAIM Nos.	SEE REVERSE SIDE		
WORK DONE BY	D.B. Fleming, C.J. Hodgson, A.C. Hitchins		
WORK DONE FOR	Canamax Resources Inc.		
REMARKS			
091615			
	YEG 84 p. 41		

- MICA 1-8 YA412-419
- 9-12 YA35947-950
- 40-41 YA45297-298
- CIMA 13-31 YA35951-969
- 32-39 YA45289-296
- 42-43 YA45689-690
- 44-51 YA45631-638
- 52-53 YA45691-692
- 54-70 YA46141-157
- 71-78 YA46246-253
- 79-102 YA46148-181
- HUN 1-80 YA71386-465
- 81-88 YA71503-510
- 89-104 YA71466-581
- 107-111 YA71556-560

The property was soil sampled as part of a geochemical survey covering the HUNDEPE, PITCO and NORTHWEST occurrences. Eight areas anomalous in lead, zinc and silver were located. Four of the anomalies are expressions of known mineralization. The remaining three anomalies are suspected to reflect weak sulphide mineralization in hornfels and quartz/epidote veins.





1984 Assessment Report

TITLE	Mt. Hundere Geochemical Report
CLAIMS	Mica 1-12,40,41; Cima 13-39,42-102; Hun 1-104
AUTHOR	D.B. Fleming, G.J. Hodgson, A.C. Hitchins
DATE	January, 1985
WORK PERIOD	August 2 - August 20, 1984
COMMODITY	Zn, Pb, Ag
LOCATION - Area	45 km North of Watson Lake, Y.T.
- Mining Division	Watson Lake, M.D.
- Co-ordinates	Latitude 60°32'N Longitude 128°58'W
- N.T.S.	105 A 7,10
OWNER	Canamax Resources Inc.
OPERATOR	Canamax Resources Inc.

CANAMAX VANCOUVER OFFICE

091615

This report has been examined by
the Geological Evaluation Unit
under Section 53 (4) Yukon Quartz
Mining Act and is allowed as
representation work in the amount
of \$ 15,800.00.

for *D. D. Emmond*
Regional Manager, Exploration and
Geological Services for Commissioner
of Yukon Territory.

C 1 0 1 0 0

TABLE OF CONTENTS

SUMMARY.....1

INTRODUCTION

 Location, Access, Physiography.....2

 Claims.....3

 Property History.....3

 1984 Program.....4

GEOCHEMISTRY

 General Remarks.....6

 Results and Interpretation.....6

 - North Showing Area.....7

 - South Showing Area.....8

 - Northwest Hill.....10

APPENDICES

Appendix I - Statement of Costs

Appendix II - Statement of Qualifications

Appendix III - Geochemical Results and Analytical Methods

TABLES

Table I - Claim Status.....After Page 3

FIGURES

Figure 1 - Location Map (1:250,000).....After Page 2

Figure 2 - Claim Map (1:50,000).....After Page 3

Figure 3a - Geochemical Map - North Sheet-Pb, Ag (1:5,000).....In Pocket

Figure 3b - Geochemical Map - North Sheet-Zn (1:5,000).....In Pocket

Figure 4a - Geochemical Map - South Sheet-Pb, Ag (1:5,000).....In Pocket

Figure 4b - Geochemical Map - South Sheet-Zn (1:5,000).....In Pocket

SUMMARY

This report presents the results of a geochemical survey conducted between August 2 and August 20, 1984, at Mt. Hundere.

The Mt. Hundere Property is located 45 km north of Watson Lake, Yukon, and is readily accessible via a 22 km secondary road from the Robert Campbell Highway.

The property is underlain by mainly phyllites of presumed Lower Cambrian age, and by one or several units of limestone and marble within the phyllite. Younger quartz-feldspar porphyry dikes are rare. Actinolite-epidote-quartz skarns with disseminated to massive sphalerite and galena occur at the phyllite/carbonate contact at two areas on the property.

The 1984 program consisted of soil sampling at 25 and 50 metre intervals on grid lines 100 metres and 200 metres apart. Stream sediment samples were collected in conjunction with soil sampling. A total of 2,060 samples were collected and analyzed for Ag, Pb, Zn.

Large Pb-Zn soil geochemical anomalies are associated with both mineralized areas on the property. Minor Pb, Zn soil anomalies were also located on Northwest Hill. Fifteen individual anomalies are documented in the body of the report.

INTRODUCTION

Location, Access, Physiography

The property is located 45 km (direct line) north of Watson Lake, Yukon (Figure 1). It is accessible via a 22 km four-wheel drive road extending east from the Robert Campbell Highway near km 56. The first 15 km of the road are relatively flat, poorly drained and sinuous, while the last 7 km has several steep grades that can be traversed only by four wheel drive vehicles.

Mt. Hundere, at elevation 1576 m, is a dome-shaped mountain with gentle slopes and spur ridges extending out from it in five directions like a starfish. The South Showing is located on a southeasterly-trending spur ridge from Mt. Hundere at elevation 1420 metres.

Due to the non-resistant nature of underlying phyllites, outcrop is generally sparse throughout the property (although never more than a half metre below surface on the higher elevations), cliffs and talus slopes are rare, and slopes are nowhere steeper than the angle of repose.

Mt. Hundere was entirely covered by ice during continental glaciation, as evidenced by the presence of chert pebble conglomerate and quartzite erratics on Mt. Hundere and of morainal sands and gravel not far below the peak. Glacial direction is not discernible on the property but is believed by H. Gabrielse to be from northwest to southeast.

Treeline is at about 1400 m elevation.

CANAMAX RESOURCES INC.

MOUNT HUNDERE PROPERTY
WATSON LAKE MINING DISTRICT — YUKON TERRITORY

LOCATION MAP



SCALE 200 0 200 KILOMETRES
100 0 100 MILES

DECEMBER, 1984

NTS Ref. 105 A 7, 10

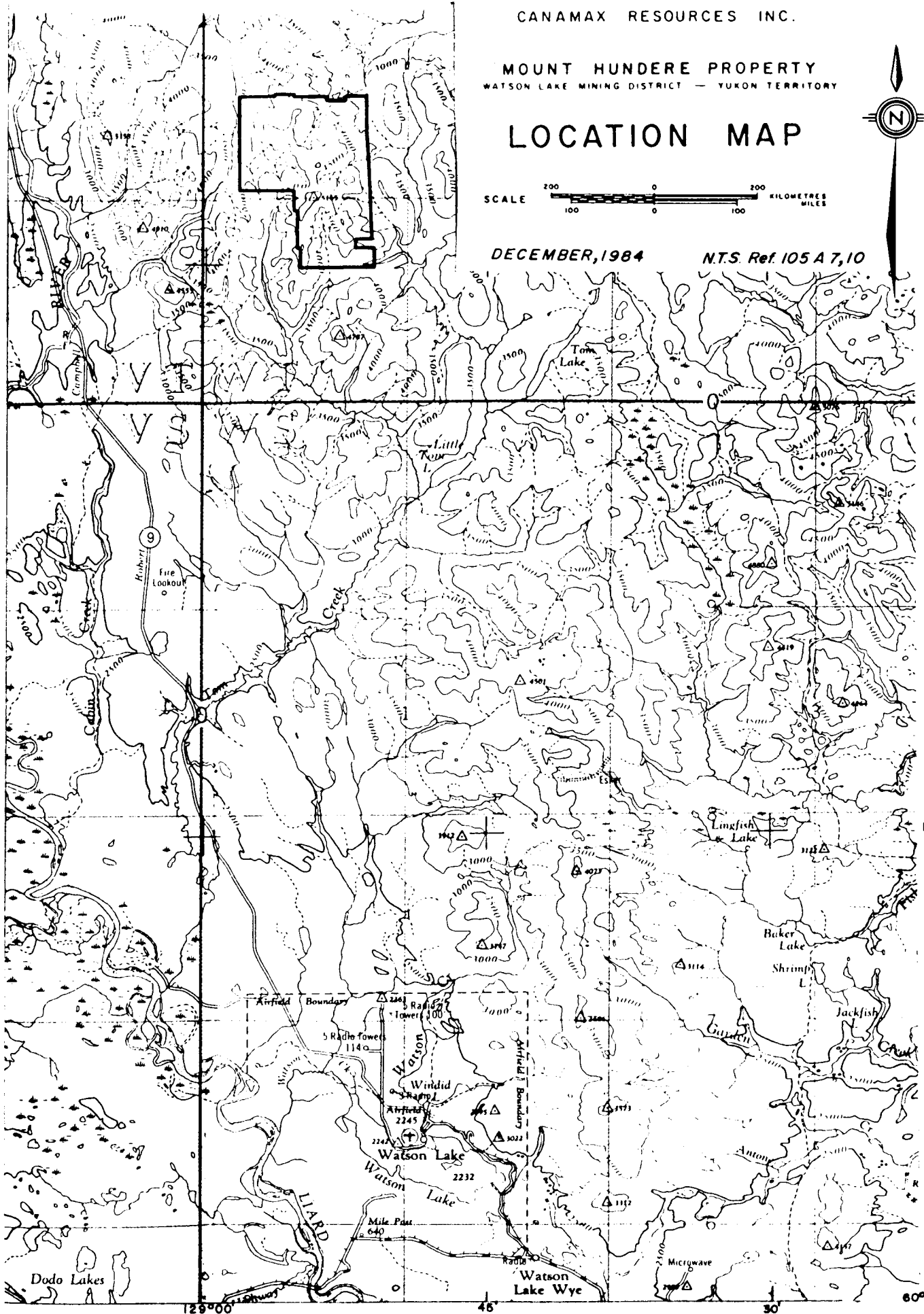


FIG. 1

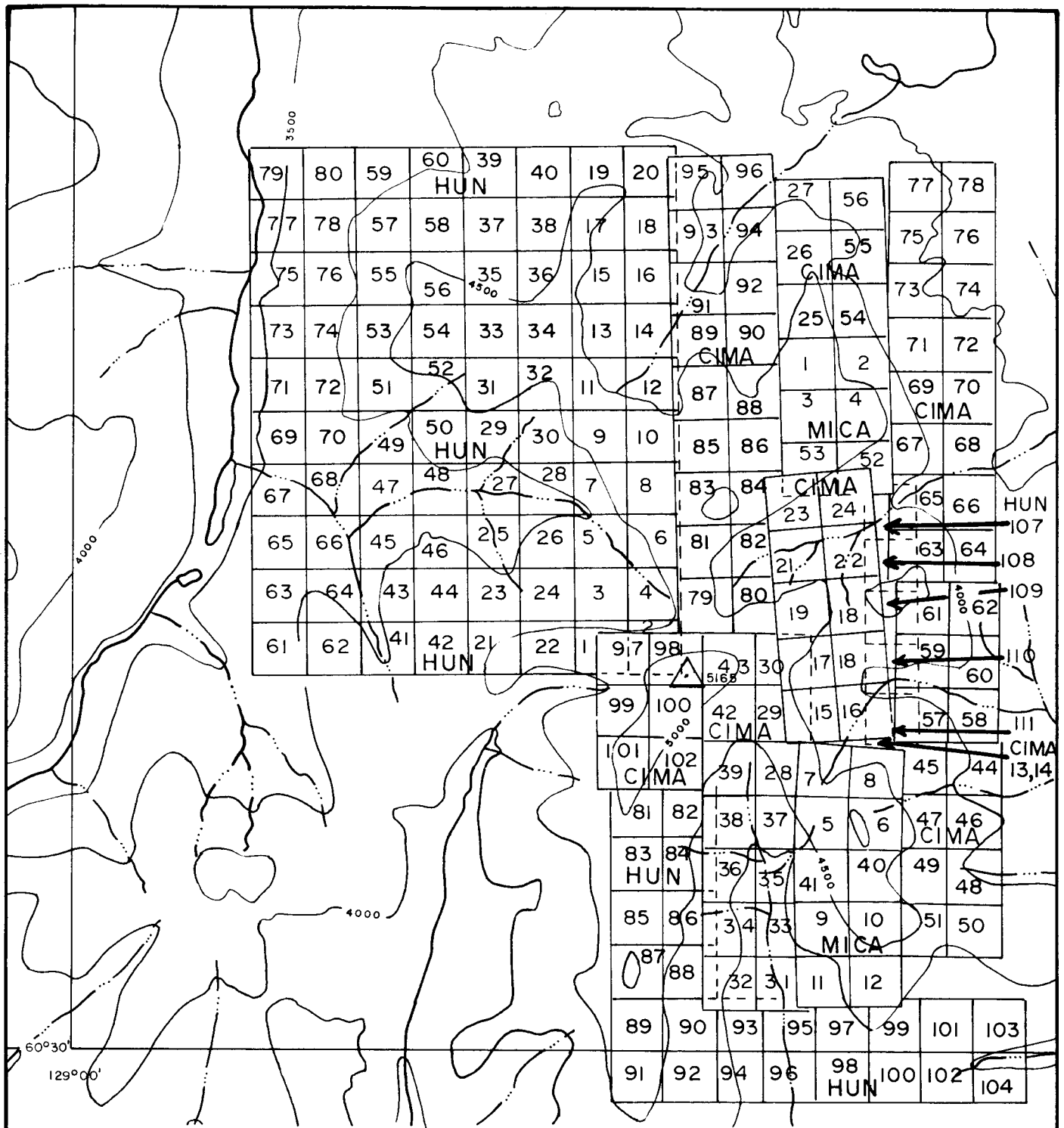
60°02'30

Claims

The property consists of 211 claims (10,950 acres) located in the Watson Lake Mining District. Mica 1-12, 40, 41 claims and Cima 13-39 and 42-102 claims were acquired by Canamax in June, 1984. Hun 1-104 and Hun 107-111 claims were staked by Canamax in July, 1984. All claims are recorded in the name of Canamax Resources Inc. Claim status is listed in Table I.

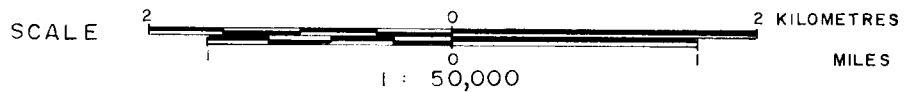
Property History

- 1962 North and South Showings were discovered by prospectors Jake Hundere and Pete Ritco, and staked as the 336 JP and PJ claims (#79573) by Frances River Syndicate (Canex-Placer, Kerr Addison, Newconex and Anglo-Huronian). Trench sampling was supervised by Aho and Associates.
- 1963 Frances River Syndicate built a 20 km access road from the Campbell Highway, explored with trenching and one DDH in the North Showing (N-1, 118.3 m) and six holes in the South Showing (S-1 to 6, 442.7 m).
- 1966 Property was optioned to Atlas Exploration Limited which performed detailed and regional geochemical, and geophysical surveys and bulldozer trenching to earn a 70% interest.
- 1974 Atlas changed its name to Cima Resources Limited.
- 1976 Property restaked as Mica 1-8 claims (YA416) after the remaining eight original claims lapsed.



CANAMAX RESOURCES INC.
 MOUNT HUNDERE PROPERTY
 WATSON LAKE MINING DISTRICT - YUKON TERRITORY

HUN, CIMA, MICA CLAIMS
CLAIM MAP



DECEMBER, 1984

N.T.S. Ref. 105 A 07, 10

FIGURE 2

Table I - Claims Status

<u>CLAIM NAME</u>	<u>RECORD NO.</u>	<u>EXPIRY DATE</u>
Mica 1-4	YA412-YA415	89-03-01
Mica 5-8	YA416-YA419	90-03-01
Mica 9-12	YA35947-YA35950	90-03-01
Mica 40-41	YA45297-YA45298	90-03-01
Cima 13-22	YA35951-YA35960	90-03-01
Cima 23-27	YA35961-YA35965	89-03-01
Cima 28-31	YA35966-YA35969	90-03-01
Cima 32-38	YA45289-YA45295	90-03-01
Cima 39	YA45296	89-03-01
Cima 42-43	YA45689-YA45690	89-03-01
Cima 44-51	YA45631-YA45638	90-03-01
Cima 52-53	YA45691-YA45692	89-03-01
Cima 54-56	YA46141-YA46143	89-03-01
Cima 57-63	YA46144-YA46150	90-03-01
Cima 64-70	YA46151-YA46157	89-03-01
Cima 71-78	YA46246-YA46253	89-03-01
Cima 79-102	YA46148-YA46181	89-03-01
Hun 1-80	YA71386-YA71465	85-07-31
Hun 81-88	YA71503-YA71510	85-08-02
Hun 89-104	YA71466-YA71581	85-07-31
Hun 107-111	YA71556-YA71560	85-08-23

- 1979 Cima staked Cima 1-103 claims (YA45288) and the Mica 9-12, 40-41 claims and explored with bulldozer trenching and 18 drill holes totalling 468 metres. All the holes (S7-S24) were drilled in the South Showing to a maximum depth of 35 metres. The Mica 5-8 claims were legally surveyed but were not taken to lease.
- 1980 Cima drilled another 26 diamond drill holes (S25-S51) in the South Showing for a total of 1,300 metres.
- 1981 Cima Resources - Canadian Natural Resources Joint Venture drilled 18 holes for 743 metres in the South Showing (S-52 to S-70) and one hole (N-69) to a depth of 54 metres in the North Showing.
- 1982 Cima - Canadian Natural Resources J/V drilled 9 holes for 427 metres in the South Showing (S71 - S79). Metallurgical tests were conducted on drill core from the oxidized East Zone.

1984 Program

Field work was conducted by D.B. Fleming, A.C. Hitchins (geologists), J. Nicholson, B. Henderson, M. Burke, S. Goertz, W. Halleran and E.T. Robinson (soil samplers), in chronological order, as follows:

1. Preparation of a 1:5,000 scale metric contoured topographic basemap (in two sheets) in July by Nadir Mapping Corp. of Vancouver.
2. Hun 1-104 and Hun 107-111 claims were staked in late July and August to cover separate showings on Northwest Hill west of the property.
3. An existing, cut, north-south baseline between the North and South Showings was extended 800 m to the north (to 26+00N) and 2,400 m to

the south (to 46+00S), brushed out, secant chained and picketed.

Flagged and picketed cross lines at 200 m spacing (100 m spacing over the North and South Showing Areas) were extended 1 km east and west of the baseline by compass and string chain. Where possible, grid lines were tied into topographic features on the new basemap.

4. Some 2,060 soil samples were collected at 25 and 50 m intervals over roughly 90 line km of grid covering the central part of the property and Northwest Hill area, and analysed for Pb, Zn and Ag. A total of 1,321 samples were collected between the period August 2 - August 20, 1984.

GEOCHEMISTRYGeneral Remarks

A total of 1,321 soil and stream sediment samples were collected on the property (Figures 3,4) from August 2 - August 20, 1984. Data from a 1980 Cima Resources soil geochemical survey were compiled for interpretation only where location and geochemical results were considered reasonably accurate. (Cima Resources sample sites prefixed by 80 in Figures 3, 4).

Samples were collected at 50 metre intervals along east-west grid lines which extended for a distance of 1 km east and west of the baseline. A 25 metre sample interval was used over the North Showing. Line 18+00N was extended 3.6 kilometers west and utilized as a baseline for sampling at the northwest hill area.

Samplers were instructed to take soil from beneath the upper humus-enriched layer. Samples consist generally of mixed till and talus.

All samples were analyzed for Ag, Pb, Zn by Rossbacher Laboratory, 2225 S. Springer Avenue, Burnaby, B.C. A description of geochemical and analytical methods is appended along with analytical results (Appendix III).

Results and Interpretation

Contoured Pb and Zn results are most useful in defining mineralized areas. Ag generally mirrors Pb, providing supportive information; only values of ≥ 1.0 ppm Ag were plotted with Pb. Zn was plotted separately.

The North and South Showings have associated high order Pb and Zn

anomalies. Zn is more extensive at the North Showing and mirrors Pb at the South Showing. Numerous anomalies are well removed from those related to the showings. Anomalies are numbered and described below, and referenced to the geochemical maps.

North Showing Area (Line 12N, 2+00E)

1. An anomaly of > 500 ppm Pb and > 1,000 ppm Zn extends 300 metres northeast from the main open cut at the north showing. The anomaly is interpreted to result from rock slides which dispersed mineralized boulders downslope in an avalanche chute (Figure 5).

2. Between lines 16N, 4+50E and lines 17 N, 2+50E, an anomaly ranging from 460 to 10,600 ppm Zn coincides with mineralized skarn outcrop and float over an area of 120 x 160 metres. Soil geochemistry does not extend beyond the known showings, except to the northeast where a 150 metre x 400 metre area of 370 to 720 ppm Zn intersects line 18N at 5+50E. This anomaly could reflect an extension to skarn mineralization.

3. A semicontinuous area of > 1,000 ppm Zn extends diagonally across slope from line 10N, 6+00E to line 16N, 8+00E. 100 to 200 ppm Pb in soil is supportive. Mineralization in float at the south end of the anomaly consists of laminar sphalerite in hornfels, and coarse disseminated sphalerite in calcite-epidote-quartz skarn. The northern part of this anomaly is unexplained.

4. The break in slope at the east end of lines 18N to 10N is anomalous, with soils of > 500 ppm Zn and > 100 ppm Pb. The anomaly

increases in intensity at line 13N, 10+00E and line 14N, 10+50E. This 200 metre wide area of 920 to 2,800 ppm Zn and up to 422 ppm Pb is open to the east. The anomaly is unexplained.

5. West of the baseline on line 12N, sample sites with up to 720 ppm Pb and 800 ppm Zn are interpreted to reflect quartz-calcite-epidote veins with minor Pb and Zn oxides similar to that uncovered further north by trenching in 1981.

South Showing Area (Line 21S, 3+00E)

6. East-west across the South Showing, soils run > 1,000 ppm Pb, > 1,000 ppm Zn for a distance of 500 metres. The anomaly extends 400 metres downslope to the north, narrowing to 150 metres in width at line 17S. Rounded boulders of quartz-galena-limonite and calcsilicate are found as far north as line 15S, though farther west. The anomaly might be interpreted as glacial and/or downslope dispersion from the South Showings. Alternatively, the anomaly may reflect local mineralization as it coincides with the trace of a major fault which is believed to control mineralization to some extent, and with the surface projection of skarns intersected at depth in the East Zone.

7. Interconnected with the South Showing anomaly is a soil anomaly directly overlying the West Zone (Line 19S, 1+00W). An area of >500 ppm Pb, >500 ppm Zn extends northwest for 400 metres to line 14S. As mentioned above, till float boulders are evidence to possible glacial dispersion.

8. Extending southwest from the South Showing, immediately east of a

major fault, a strong linear anomaly of 432 to 2,420 ppm Zn and 450 to 1,780 ppm Pb runs for 350 metres to BL 24+50S. This might reflect buried mineralization at or near the limestone-phyllite contact, proximal to quartz-fluorite veins within the fault zone.

9. A northeast-trending soil anomaly of 250 to 1,200 ppm Pb and Zn to 880 ppm runs for 400 metres from line 26S 5+50E to line 22S 7+00E. Epidote-galena-sphalerite quartz veins were mapped in a trench towards the south end of the anomaly. The anomaly occurs downslope and east of a major fault which has skarnified and mineralized adjacent phyllite.

10. Southeast of the South Showing, at the east end of lines 23-25S, soil samples range from 304 to 950 ppm Pb and 640 to 740 ppm Zn. The anomaly is open to the east. Weakly hornfelsed phyllite with epidote and chlorite on joints is exposed 200 metres to the south. The anomaly is unexplained due to poor exposure.

11. An isolated soil anomaly 100 x 200 metres of 496 to 2,000 ppm Pb and 740 - 2,600 ppm Zn occurs on the back side of the ridge from the West Zone. Numerous quartz, limonite, sphalerite, galena veins are widespread in outcrop and float. This anomaly and other low order anomalies from line 14S to line 21S are most likely derived from similar vein-type mineralization.

12. A weak soil anomaly (>50 ppm Pb, >200 ppm Zn) follows the surface trace of a major fault from the South Showing north to line 0+00, 2+00E. Along the fault at line 8S, 3+50E, a 150 metre area of 360 to 720 ppm Pb and 540 to 1,120 ppm Zn is situated proximal to the surface trace of lime-

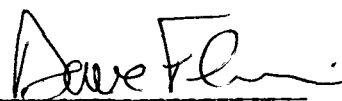
stone beds. The anomaly is unexplained due to lack of exposure but could reflect skarn mineralization.

13. South and southwest of line 28S, 8+50E, isolated anomalies up to 462 ppm Pb and 1,080 ppm Zn occur within broad northeast-trending zones of > 100 ppm Pb and > 200 ppm Zn in soil. The anomalies are present to the southern extremity of the property, and are likely due to weak hornfels and associated quartz, epidote, galena, sphalerite veins.

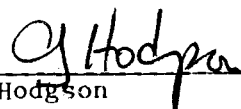
Northwest Hill

14. Several soil samples of 116 to 310 ppm Pb at the projected limestone-phyllite contact in the northwest corners of the grid remain unexplained.

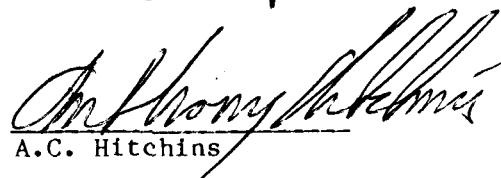
15. A 1,250 ppm Pb anomaly west of trenches exposing highly contorted quartz-carbonate-epidote veins indicate that the structure is possibly continuous to the west.



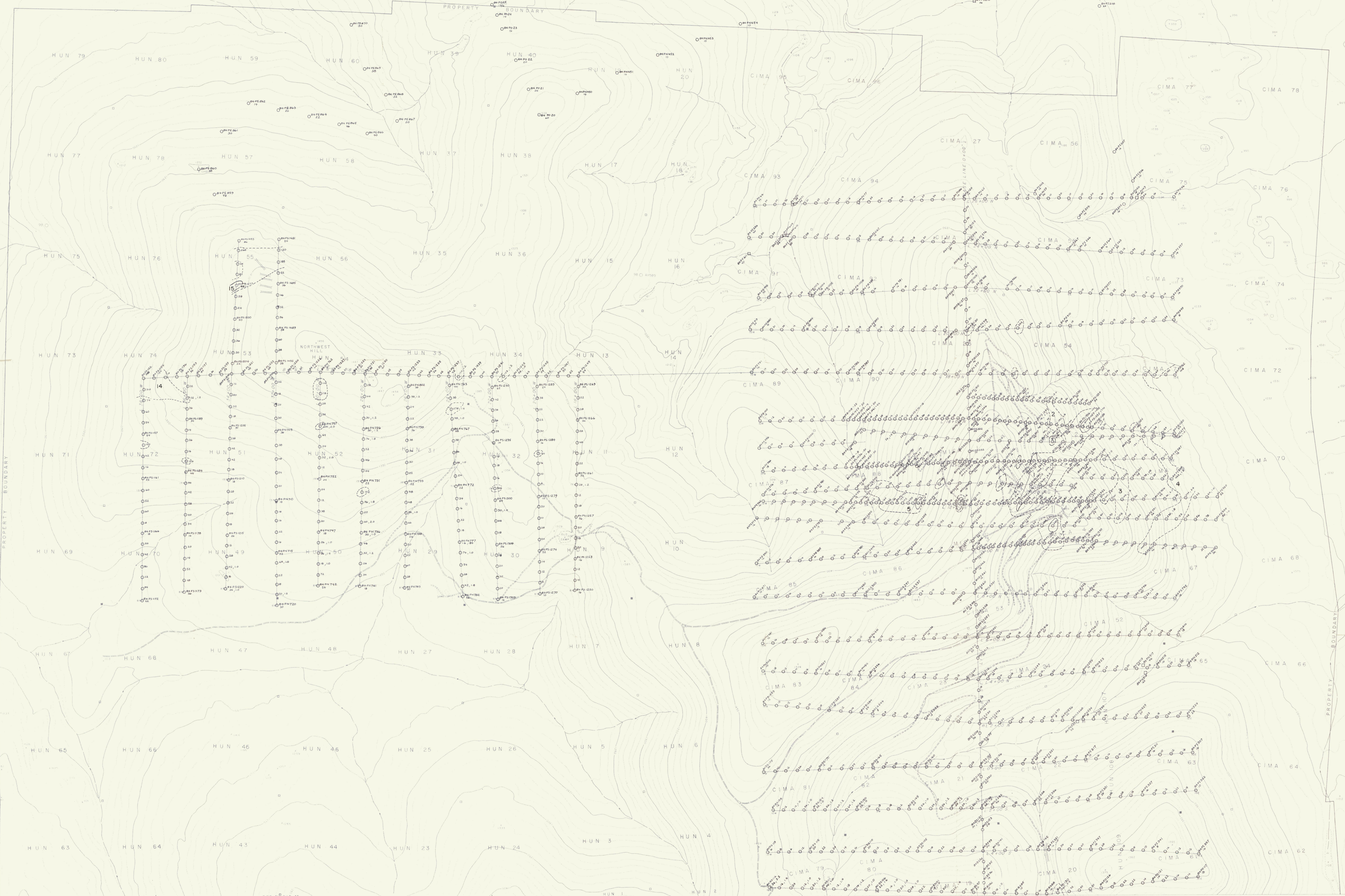
D.B. Fleming



C.J. Hodgson



A.C. Hitchins

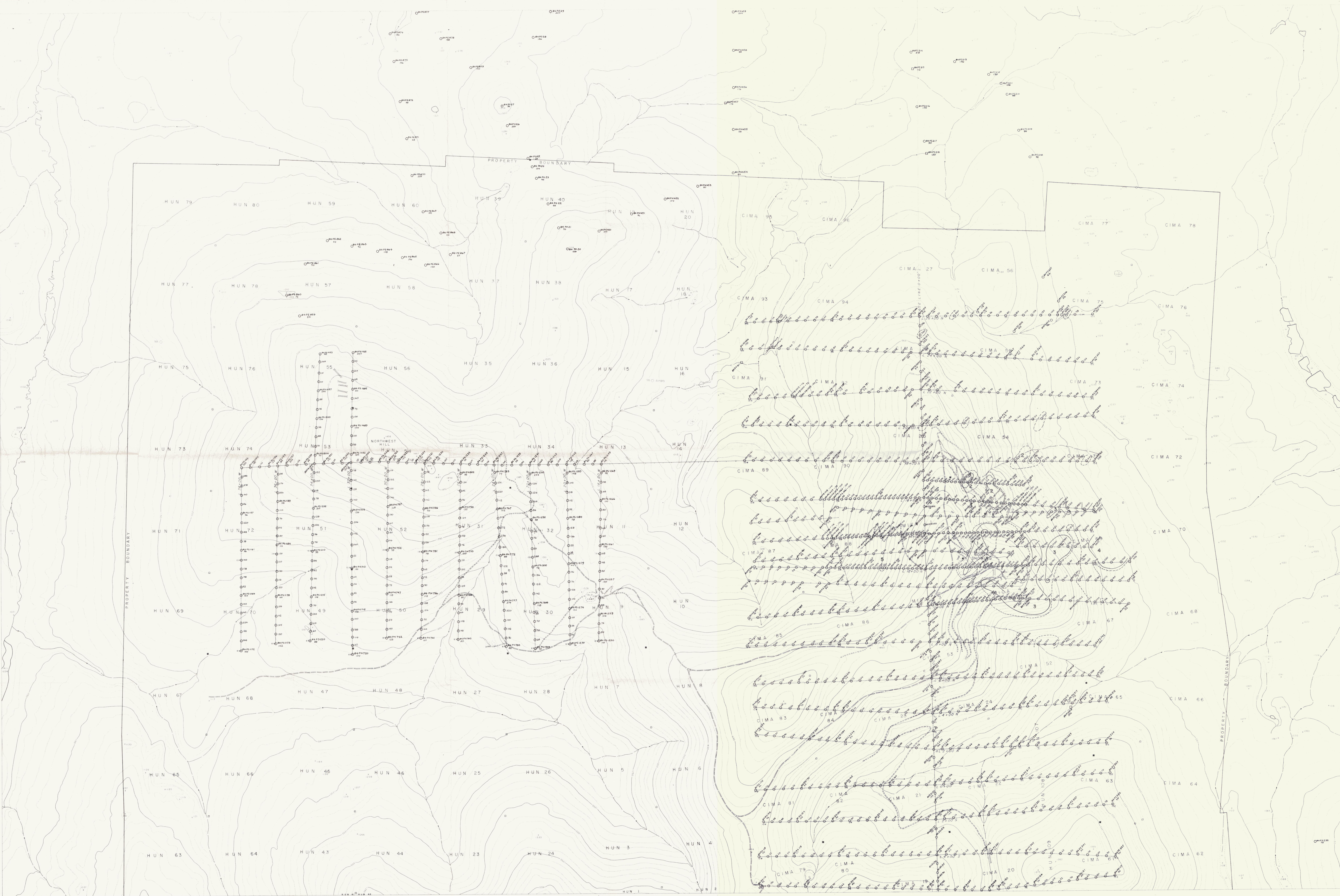


- SYMBOLS**
- Soil sample site
 - Silt sample site
 - sample number, ppm Pb, Ag
 - > 500 ppm Pb
 - 100-500 ppm Pb
 - Grid line
 - Diamond drill hole
 - Clim pit (location known)
 - Trench
 - Trench - road
 - Road
 - Access road
 - Stream
 - Topographic contour (contour interval 10 metres)

NOTE: Ag results only for values > 1.0ppm

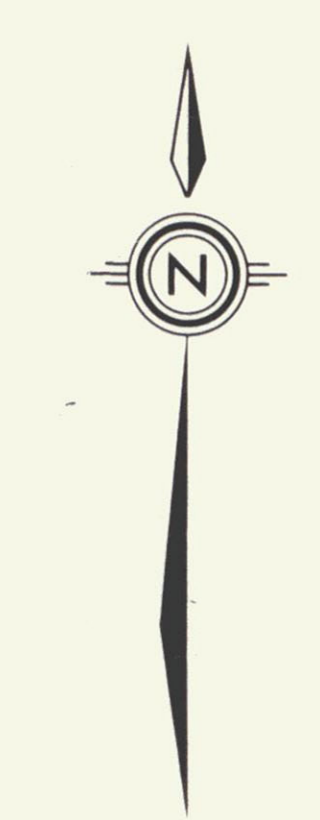
091615
CANAMAX RESOURCES INC.
MOUNT HUNDERERE PROPERTY
WATSON LAKE MINING DISTRICT - YUKON TERRITORY
GEOCHEMICAL MAP
NORTH SHEET

SCALE 1:5000
To accompany 1984 Report by D. B. Fleming, C. J. Hodgson and A. C. Hitchins.
December 1984
N.T.S. ref. 05 A 7 one 10
FIGURE 3a



- SYMBOLS**
- Soil sample site } sample number, ppm Zn
 - Silt sample site
 - 1000 ppm Zn
 - 500-1000 ppm Zn
 - Grid line
 - Drawn grid line
 - Claim post (location shown)
 - Trench
 - Trench - road
 - Road
 - Access road
 - Stream
 - Topographic contour (contour interval 10 metres)

091615
CANAMAX RESOURCES INC.
MOUNT HUNDER PROPERTY
WATSON LAKE MINING DISTRICT - YUKON TERRITORY
GEOCHEMICAL MAP
NORTH SHEET
ZINC
SCALE 1:5,000
To accompany 1984 Report by D. B. Fleming, C. J. Hodgson and A. C. Hitchins
December 1984
FIGURE 3b



- SYMBOLS**
- Soil sample site
 - Soil sample size
 - Soil sample size
 - > 500 ppm Pb
 - 100-500 ppm Pb
 - Drill hole
 - Diamond drill hole
 - Drill post (flush on rock)
 - Trench
 - Trench - road
 - Road
 - Access road
 - Stream
 - Topographic contour (Contour interval 10 metres)

NOTE: Ag results only for values ≥ 1.0 ppm

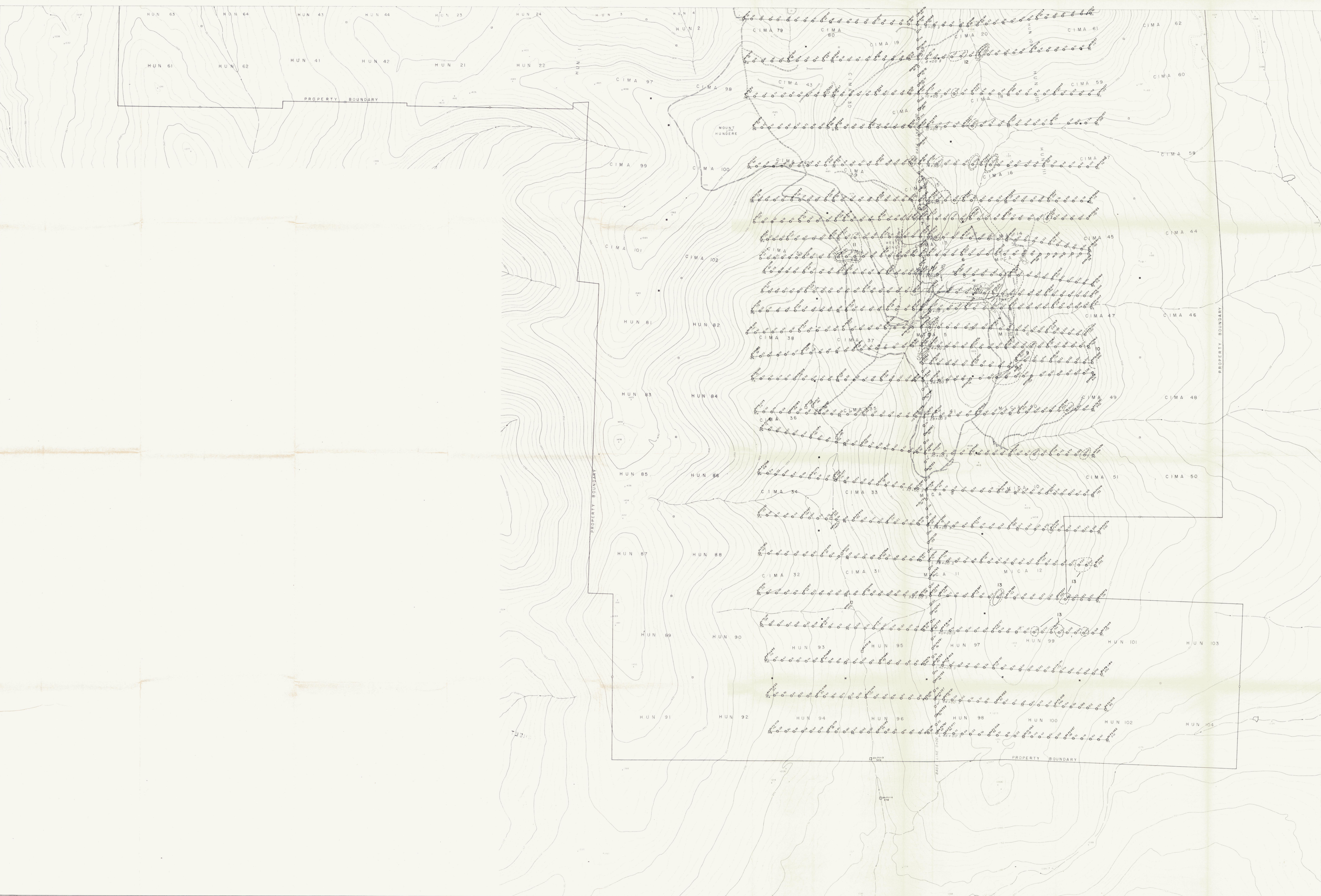
091615
CANAMAX RESOURCES INC.
MOUNT HUNDERE PROPERTY
WATSON LAKE MINING DISTRICT - YUKON TERRITORY
GEOCHEMICAL MAP
SOUTH SHEET
LEAD, SILVER
SCALE 1:50,000
To accompany 1984 Report by D. B. Fleming, C. J. Hodgson and A. C. Nicholas
Vancouver - December 1984
N.T.S. Ref. 05 A 7 and 10
FIGURE 4a





- SYMBOLS**
- 1000 ppm Zn
 - 500-1000 ppm Zn
 - 71000 ppm Zn
 - 71000 ppm Zn
-
- Grid line
 - Diamond drill hole
 - Claim post (location known)
 - Trench
 - Trench road
 - Road
 - Access road
 - Stream
 - Topographic contour (contour interval 10 metres)

091615
CANAMAX RESOURCES INC.
MOUNT HUNDERE PROPERTY
WATSON LAKE MINING DISTRICT — YUKON TERRITORY
GEOCHEMICAL MAP
SOUTH SHEET
ZINC
SCALE 1:5,000
To accompany 1984 Report by D. B. Fleming, C. J. Hodgson and A. C. Hitchins.
Vancouver — December 1984
FIGURE 4



APPENDIX I

Statement of Costs

Statement of Costs

Mt. Hundere Property

Summary of Work - Geochemical Survey

Period of Work - August 2 - August 20, 1984

Personnel Employed

A.C. Hitchins-601-535 Thurlow St., Vancouver, B.C. Staff Geologist 1 day @ \$183.36/day	183.36
D.B. Fleming-#6-2165 West 1st Ave., Vancouver, B.C. Temporary Geologist 2 days @ \$110.57/day	221.14
W.H. Halleran-211-1205 Comox St., Vancouver, B.C. Temporary Geological Assistant 1 day @ \$90.67/day	90.67
S.B. Goertz-1038 Marigold Ave, North Vancouver, B.C. Temporary Assistant 1 day @ \$78.61/day	78.61
J.A. Nicholson-P.O. Box 567, Squamish, B.C. Temporary Assistant 7 days @ \$75.19/day	526.33
E.T. Robinson-Gen. Del., Old Ferry Road, Monte Creek, B.C. Temporary Soil Sampler 1 day @ \$63.03/day	63.03
M.R. Burke-46202 Riverside Dr., Chilliwack, B.C. Temporary Soil Sampler 9 days @ \$57.30/day	515.70
B.J. Henderson-371 Francis Ave., Kelowna, B.C. Temporary Soil Sampler 19 days @ \$61.92/day	1,176.48

Board - 41 man days @ \$25/day 1,025.00

Geochemical Analyses - Rossbacher Laboratory Ltd.
2225 S. Springer Avenue
Burnaby, B.C.

Invoice Nos. 4338, 4379, 4359, 4371, 4425
1,321 samples analyzed for Ag, Pb, Zn @ \$3.20,
Sample prep. @ \$0.60 = 1,321 x \$3.80 5,019.80

Page Two
Statement of Costs

<u>Shipping</u> - Greyhound Lines of Canada Ltd. and Rossbacher Laboratory Ltd. (Invoices enclosed)	\$888.60
<u>Truck Rental</u> - Norcan Leasing 917 Alaska Highway Whitehorse, Yukon Invoice Nos. 3916, 4430 Truck rental for 53 days = \$1,915.40 - Prorated for 19 days	686.65
<u>Materials and Supplies</u>	600.00
<u>Topographic Map Preparation</u> - Nadir Mapping Corporation 310 Water Street Vancouver, B.C. Invoice No. 3170	3,793.26
<u>Report Writing and Drafting</u>	<u>1,000.00</u>
TOTAL	\$15,868.63

CJHodg

NADJR MAPPING CORPORATION 310 WATER STREET VANCOUVER, B.C. V6B 1B6 683-3282

Canamax Resources Inc.
601 - 535 Thurlow Street
Vancouver, B.C.
V6E 3L6

Attn: Hermano Pires

S
O
L
D

S
H
I
P
T
O

JOB NUMBER	DATE	PURCHASE ORDER NO.	ORDER DATE	SHIPPED VIA	PROGRESS	FINAL
84-041	Aug 14 1984					X

Re: Topographic Mapping - MT. HUNDERE Area

- | | |
|---|-----------|
| 1. 1:5,000 scale, fairdrawn mapping, 10 Meter contour interval
2 map sheets | \$3685.00 |
| 2. Blue line prints - 6 prints of each of 3 manuscripts
- 6 prints of each of 2 final map sheets | \$ 108.26 |
| | \$3793.26 |

ADD & EXT CORRECT	DATE
<i>[Signature]</i> APPROVED	<i>[Signature]</i> Aug 16/84

510001	PROV EXEMPT NO.	INVOICE NUMBER	TOTAL FEE	\$3793.26
510002		CK 59719 AUG 23 1984	B.C. SALES TAX	
510003	FEDERAL EXEMPT NO.		FEDERAL SALES TAX	
510004		3170	TOTAL INVOICE	\$3793.26
510005				

*Billed as quoted
please pay promptly*

[Signature]

Greyhound Package Express!
EXPRESS RECEIPT

CONSIGNEE _____ PROV _____		CHARGE ACCOUNT	ACTUAL WEIGHT	TARIFF WEIGHT	DECLARED VALUE
STREET ADDRESS _____		RECEIVED AT DESTINATION STATION	RECEIVED IN GOOD ORDER UNLESS SPECIFIED		
NO OF PIECES <u>2</u>		DATE _____	TIME _____	X CP	
<input type="checkbox"/> PKG <input type="checkbox"/> BOX <input type="checkbox"/> ENV <input checked="" type="checkbox"/> SACK <input type="checkbox"/> BGGE <input type="checkbox"/> CTN OTHER _____		COMPANY TO	EXPRESS CHARGES \$ <u>02.15</u>		
CONTENTS _____		CHARGE	PICKUP CHARGES \$ <u>50</u>		
SHIPPER'S NAME _____ #7067		CHARGE	CHARGES ADVANCED \$ _____		
STREET ADDRESS _____		LIABILITY LIMITED TO GREATER VALUE OF CHARGE PAID	DELIVERY CHARGES \$ _____		
ORIGIN CITY & PROV _____		SHIPPER'S SIGNATURE	AMOUNT \$ <u>28.65</u>		
		NO. <u>15</u>	DATE _____		

5. CONSIGNEE'S RECEIPT COLLECT

The Carrier agrees to carry and deliver the packages described hereon upon the terms and conditions prescribed by the proper authority of the province in which this shipment originates and published in the tariff of the Carrier which is open for inspection by the public at the principal office of the Carrier and at the termini of each route over which the Carrier is licensed to operate, and to which the Shipper agrees by accepting this receipt.

Greyhound Package Express!
EXPRESS RECEIPT

DESTINATION STATION		GREYHOUND LINES OF CANADA LTD.			FORWARDING AGENT
<u>BURBANK</u> PROV <u>BC</u>		PHONE	TIME	MONTH	DAY
CONSIGNEE		CHARGE ACCOUNT	ACTUAL WEIGHT	TARIFF WEIGHT	DECLARED VALUE
<u>ROSS HICKER LINDS</u>		<u>89</u> LBS	LBS	\$	
STREET ADDRESS		RECEIVED AT DESTINATION STATION	RECEIVED IN GOOD ORDER UNLESS SPECIFIED		
<u>7925 S SPANGLER</u>		DATE	PICKUP CHARGE	TIME	<u>300 CP</u>
NO OF PIECES <u>2</u>		COMPANY TO	EXPRESS CHARGES \$ <u>38.65</u>		
<input type="checkbox"/> PKG <input type="checkbox"/> BOX <input type="checkbox"/> ENV <input checked="" type="checkbox"/> SACK <input type="checkbox"/> BGGE <input type="checkbox"/> CTN OTHER _____		CHARGE	PICKUP CHARGES \$ _____		
CONTENTS		CHARGE	CHARGES ADVANCED \$ _____		
<u>SOL - PAGE 69</u>		CHARGE	DELIVERY CHARGES \$ _____		
SHIPPER'S NAME		LIABILITY LIMITED TO GREATER VALUE OF CHARGE PAID	AMOUNT \$ <u>45.65</u>		
STREET ADDRESS		SHIPPER'S SIGNATURE	NO. <u>15</u>		
<u>1604 26</u>		<u>AB Howe</u>	DATE _____		
ORIGIN CITY & PROV					

5. CONSIGNEE'S RECEIPT COLLECT

The Carrier agrees to carry and deliver the packages described hereon upon the terms and conditions prescribed by the proper authority of the province in which this shipment originates and published in the tariff of the Carrier which is open for inspection by the public at the principal office of the Carrier and at the termini of each route over which the Carrier is licensed to operate, and to which the Shipper agrees by accepting this receipt.

Greyhound Package Express!
EXPRESS RECEIPT

DESTINATION STATION		GREYHOUND LINES OF CANADA LTD.			FORWARDING AGENT
<u>MEARL</u> PROV <u>BC</u>		PHONE	TIME	MONTH	DAY
CONSIGNEE		CHARGE ACCOUNT	ACTUAL WEIGHT	TARIFF WEIGHT	DECLARED VALUE
<u>ROSS HICKER LINDS</u>		<u>1166</u> LBS	LBS	\$	
STREET ADDRESS		RECEIVED AT DESTINATION STATION	RECEIVED IN GOOD ORDER UNLESS SPECIFIED		
<u>7025 S SPANGLER</u>		DATE	PICKUP CHARGE	TIME	<u>475 CP</u>
NO OF PIECES <u>2</u>		COMPANY TO	EXPRESS CHARGES \$ <u>54.85</u>		
<input type="checkbox"/> PKG <input type="checkbox"/> BOX <input type="checkbox"/> ENV <input checked="" type="checkbox"/> SACK <input type="checkbox"/> BGGE <input type="checkbox"/> CTN OTHER _____		CHARGE	PICKUP CHARGES \$ _____		
CONTENTS		CHARGE	CHARGES ADVANCED \$ _____		
<u>SOL - PAGE #69</u>		CHARGE	DELIVERY CHARGES \$ _____		
SHIPPER'S NAME		LIABILITY LIMITED TO GREATER VALUE OF CHARGE PAID	AMOUNT \$ <u>65.60</u>		
STREET ADDRESS		SHIPPER'S SIGNATURE	NO. <u>15</u>		
<u>1604 26</u>		<u>AB Howe</u>	DATE _____		
ORIGIN CITY & PROV					

5. CONSIGNEE'S RECEIPT COLLECT

The Carrier agrees to carry and deliver the packages described hereon upon the terms and conditions prescribed by the proper authority of the province in which this shipment originates and published in the tariff of the Carrier which is open for inspection by the public at the principal office of the Carrier and at the termini of each route over which the Carrier is licensed to operate, and to which the Shipper agrees by accepting this receipt.

Greyhound Package Express!
EXPRESS RECEIPT
(NON-NEGOTIABLE)

DESTINATION STATION 1111111111 PROV 11		GREYHOUND LINES OF CANADA LTD.		FORWARDING AGENT 1234567890	
CONSIGNEE 1111111111		PHONE 111-1111	TIME 8 9 87	MONTH 8	DAY 9
STREET ADDRESS 1111111111		CHARGE ACCOUNT 116	ACTUAL WEIGHT 116	TARIFF WEIGHT	DECLARED VALUE
NO OF PIECES 7		RECEIVED AT DESTINATION STATION DATE 11/11/11		RECEIVED IN GOOD ORDER UNLESS SPECIFIED TIME CP	
CONTENTS 1111111111		PKG	BOX	ENV	SACK
SHIPPER'S NAME 1111111111		OTHER	COMPANY 475	EXPRESS CHARGES	\$ 55.75
STREET ADDRESS 1111111111		NO	DATE	PICKUP CHARGES	\$ 11
ORIGIN CITY & PROV 1111111111		DATE	AMOUNT	CHARGES ADVANCED	\$
5. CONSIGNEE'S RECEIPT		COLLECT	(15)	DELIVERY CHARGES	\$

The Carrier agrees to carry and deliver the packages described herein upon the terms and conditions prescribed by the proper authority of the province in which this shipment originates and published in the tariff of the Carrier which is open for inspection by the public at the principal office of the Carrier and at the terminus of each route over which the Carrier is licensed to operate and to which the Shipper agrees by accepting this receipt.

Greyhound Package Express!
EXPRESS RECEIPT
(NON-NEGOTIABLE)

DESTINATION STATION 1111111111 PROV 11		GREYHOUND LINES OF CANADA LTD.		FORWARDING AGENT 1234567890	
CONSIGNEE 1111111111		PHONE 111-1111	TIME 8 9 87	MONTH 8	DAY 9
STREET ADDRESS 1111111111		CHARGE ACCOUNT 76	ACTUAL WEIGHT 76	TARIFF WEIGHT	DECLARED VALUE
NO OF PIECES 2		RECEIVED AT DESTINATION STATION DATE 11/11/11		RECEIVED IN GOOD ORDER UNLESS SPECIFIED TIME CP	
CONTENTS 1111111111		PKG	BOX	ENV	SACK
SHIPPER'S NAME 1111111111		OTHER	COMPANY 300	EXPRESS CHARGES	\$ 34.50
STREET ADDRESS 1111111111		NO	DATE	PICKUP CHARGES	\$ 5.00
ORIGIN CITY & PROV 1111111111		DATE	AMOUNT	CHARGES ADVANCED	\$
5. CONSIGNEE'S RECEIPT		COLLECT	(15)	DELIVERY CHARGES	\$

The Carrier agrees to carry and deliver the packages described herein upon the terms and conditions prescribed by the proper authority of the province in which this shipment originates and published in the tariff of the Carrier which is open for inspection by the public at the principal office of the Carrier and at the terminus of each route over which the Carrier is licensed to operate and to which the Shipper agrees by accepting this receipt.

Greyhound Package Express!
EXPRESS RECEIPT
(NON-NEGOTIABLE)

DESTINATION STATION 1111111111 PROV 11		GREYHOUND LINES OF CANADA LTD.		FORWARDING AGENT 1234567890	
CONSIGNEE 1111111111		PHONE 111-1111	TIME 8 7 89	MONTH 8	DAY 7
STREET ADDRESS 1111111111		CHARGE ACCOUNT 116	ACTUAL WEIGHT 116	TARIFF WEIGHT	DECLARED VALUE
NO OF PIECES 3		RECEIVED AT DESTINATION STATION DATE 11/11/11		RECEIVED IN GOOD ORDER UNLESS SPECIFIED TIME CP	
CONTENTS 1111111111		PKG	BOX	ENV	SACK
SHIPPER'S NAME 1111111111		OTHER	COMPANY 475	EXPRESS CHARGES	\$ 52.75
STREET ADDRESS 1111111111		NO	DATE	PICKUP CHARGES	\$ 6.00
ORIGIN CITY & PROV 1111111111		DATE	AMOUNT	CHARGES ADVANCED	\$
5. CONSIGNEE'S RECEIPT		COLLECT	(15)	DELIVERY CHARGES	\$

The Carrier agrees to carry and deliver the packages described herein upon the terms and conditions prescribed by the proper authority of the province in which this shipment originates and published in the tariff of the Carrier which is open for inspection by the public at the principal office of the Carrier and at the terminus of each route over which the Carrier is licensed to operate and to which the Shipper agrees by accepting this receipt.

Greyhound Package Express
EXPRESS RECEIPT

DESTINATION STATION: **BURNABY** PROV. **BC** PHONE: **683-0474** TIME: **8:15** AM MONTH: **8** DAY: **15** YEAR: **84**

CONSIGNEE: **ROSS BACHER LAISS** CHARGE ACCOUNT: **108** TARIFF WEIGHT: **108** LBS. \$
DECLARED VALUE: **5480** MAX VALUE CANNOT EXCEED \$50.00

STREET ADDRESS: **2225 S. SPRINGER** RECEIVED AT DESTINATION STATION: DATE: TIME: AM **X** CP
RECEIVED IN GOOD ORDER UNLESS SPECIFIED

NO. OF PIECES: **3** PKG. BOX ENV. SACK BGGE. CTN. OTHER

CONTENTS:

SHIPPER'S NAME: **D FLEMING** COMPANY TO CHARGE: **475** EXPRESS CHARGES: **5435**
STREET ADDRESS: **Box 250** BUS CHARGE: **5485** PICKUP CHARGES: **50**
ORIGIN CITY & PROV.: **WATSON LAKE YT** LIABILITY LIMITED TO \$100 UNLESS GREATER VALUE DECLARED BY SHIPPER CHARGE PAID: **7000** CHARGES ADVANCED: \$
SHIPPER'S SIGNATURE: **[Signature]** DELIVERY CHARGES: \$
NO. DATE AMOUNT: **15** **85** **5480**

5. CONSIGNEE'S RECEIPT COLLECT

The Carrier agrees to carry and deliver the packages described hereon upon the terms and conditions prescribed by the proper authority of the province in which this shipment originates and published in the tariff of the Carrier which is open for inspection by the public at the principal office of the Carrier and at the terminal of each route over which the Carrier is licensed to operate, and to which the Shipper agrees by accepting this receipt.

Greyhound Package Express
EXPRESS RECEIPT

DESTINATION STATION: **BURNABY** PROV. **BC** PHONE: **683-0474** TIME: **8:15** AM MONTH: **8** DAY: **15** YEAR: **84**

CONSIGNEE: **ROSS BACHER LAISS** CHARGE ACCOUNT: **135** TARIFF WEIGHT: **135** LBS. \$
DECLARED VALUE: **6205** MAX VALUE CANNOT EXCEED \$50.00

STREET ADDRESS: **2225 S. SPRINGER** RECEIVED AT DESTINATION STATION: DATE: TIME: AM **X** CP
RECEIVED IN GOOD ORDER UNLESS SPECIFIED

NO. OF PIECES: **3** PKG. BOX ENV. SACK BGGE. CTN. OTHER

CONTENTS:

SHIPPER'S NAME: **D FLEMING** COMPANY TO CHARGE: **475** EXPRESS CHARGES: **6150**
STREET ADDRESS: **Box 250** BUS CHARGE: **6205** PICKUP CHARGES: **50**
ORIGIN CITY & PROV.: **WATSON LAKE YT** LIABILITY LIMITED TO \$100 UNLESS GREATER VALUE DECLARED BY SHIPPER CHARGE PAID: **700** CHARGES ADVANCED: \$
SHIPPER'S SIGNATURE: **[Signature]** DELIVERY CHARGES: \$
NO. DATE AMOUNT: **15** **85** **6205**

5. CONSIGNEE'S RECEIPT COLLECT

The Carrier agrees to carry and deliver the packages described hereon upon the terms and conditions prescribed by the proper authority of the province in which this shipment originates and published in the tariff of the Carrier which is open for inspection by the public at the principal office of the Carrier and at the terminal of each route over which the Carrier is licensed to operate, and to which the Shipper agrees by accepting this receipt.

Greyhound Package Express
EXPRESS RECEIPT

DESTINATION STATION: **BURNABY** PROV. **BC** PHONE: **683-0474** TIME: **8:15** AM MONTH: **8** DAY: **15** YEAR: **84**

CONSIGNEE: **ROSS BACHER LAISS** CHARGE ACCOUNT: **124** TARIFF WEIGHT: **124** LBS. \$
DECLARED VALUE: **5945** MAX VALUE CANNOT EXCEED \$50.00

STREET ADDRESS: **2225 S. SPRINGER** RECEIVED AT DESTINATION STATION: DATE: TIME: AM **X** CP
RECEIVED IN GOOD ORDER UNLESS SPECIFIED

NO. OF PIECES: **3** PKG. BOX ENV. SACK BGGE. CTN. OTHER

CONTENTS:

SHIPPER'S NAME: **D FLEMING** COMPANY TO CHARGE: **475** EXPRESS CHARGES: **5895**
STREET ADDRESS: **Box 250** BUS CHARGE: **5945** PICKUP CHARGES: **50**
ORIGIN CITY & PROV.: **WATSON LAKE YT** LIABILITY LIMITED TO \$100 UNLESS GREATER VALUE DECLARED BY SHIPPER CHARGE PAID: **600** CHARGES ADVANCED: \$
SHIPPER'S SIGNATURE: **[Signature]** DELIVERY CHARGES: \$
NO. DATE AMOUNT: **15** **85** **5945**

5. CONSIGNEE'S RECEIPT COLLECT

The Carrier agrees to carry and deliver the packages described hereon upon the terms and conditions prescribed by the proper authority of the province in which this shipment originates and published in the tariff of the Carrier which is open for inspection by the public at the principal office of the Carrier and at the terminal of each route over which the Carrier is licensed to operate, and to which the Shipper agrees by accepting this receipt.

Greyhound Package Express
EXPRESS RECEIPT

CONSIGNEE: WATSON LAKE PROV. BC
 STREET ADDRESS: ROSS BACHER LABS
2225 S SPRINGER

NO. OF PIECES: 3 PKG. BOX ENV. SACK BQGE CTN.

CONTENTS:

SHIPPER'S NAME: D. FLEMING
 STREET ADDRESS:
 ORIGIN CITY & PROV.: WATSON LAKE BC

DESTINATION STATION: GREYHOUND LINES OF CANADA LTD.
 PHONE: 7390 TIME: 8 21 51 MONTH: 8 DAY: 21 YEAR: 81

CHARGE ACCOUNT: 134 ACTUAL WEIGHT: 134 LBS. TARIFF WEIGHT: LBS. DECLARED VALUE: \$

RECEIVED AT DESTINATION STATION: DATE: TIME: AM/PM: X CP

COMPANY TO: EXPRESS CHARGES \$ 67.55
 PICKUP CHARGES \$ 50
 CHARGES ADVANCED \$
 DELIVERY CHARGES \$
 TOTAL TO COLLECT \$ 67.55

PICK-UP CHARGE: 475
 BUS CHARGE: 62.00
 LIABILITY LIMITED TO \$5000 UNLESS GREATER VALUE DECLARED BY SHIPPER AND CHARGE PAID
 SHIPPER'S SIGNATURE: [Signature] DATE: 7390

5. CONSIGNEE'S RECEIPT **COLLECT**

The Carrier agrees to carry and deliver the packages described hereon upon the terms and conditions prescribed by the proper authority of the province in which this shipment originates and published in the tariff of the Carrier which is open for inspection by the public at the principal office of the Carrier and at the termini of each route over which the Carrier is licensed to operate, and to which the Shipper agrees by accepting this receipt.

Greyhound Package Express
EXPRESS RECEIPT

CONSIGNEE: WATSON LAKE PROV. BC
 STREET ADDRESS: ROSS BACHER LABS
2225 S SPRINGER

NO. OF PIECES: 3 PKG. BOX ENV. SACK BQGE CTN.

CONTENTS:

SHIPPER'S NAME: D. FLEMING
 STREET ADDRESS:
 ORIGIN CITY & PROV.: WATSON LAKE

DESTINATION STATION: GREYHOUND LINES OF CANADA LTD.
 PHONE: 7069 TIME: 8 21 51 MONTH: 8 DAY: 21 YEAR: 81

CHARGE ACCOUNT: 91 ACTUAL WEIGHT: 91 LBS. TARIFF WEIGHT: LBS. DECLARED VALUE: \$

RECEIVED AT DESTINATION STATION: DATE: TIME: AM/PM: X CP

COMPANY TO: EXPRESS CHARGES \$ 42.55
 PICKUP CHARGES \$ 50
 CHARGES ADVANCED \$
 DELIVERY CHARGES \$
 TOTAL TO COLLECT \$ 42.55

PICK-UP CHARGE: 300
 BUS CHARGE: 42.55
 LIABILITY LIMITED TO \$5000 UNLESS GREATER VALUE DECLARED BY SHIPPER AND CHARGE PAID
 SHIPPER'S SIGNATURE: [Signature] DATE: 7069

5. CONSIGNEE'S RECEIPT **COLLECT**

The Carrier agrees to carry and deliver the packages described hereon upon the terms and conditions prescribed by the proper authority of the province in which this shipment originates and published in the tariff of the Carrier which is open for inspection by the public at the principal office of the Carrier and at the termini of each route over which the Carrier is licensed to operate, and to which the Shipper agrees by accepting this receipt.

Greyhound Package Express
EXPRESS RECEIPT

CONSIGNEE: WATSON LAKE PROV. BC
 STREET ADDRESS: ROSS BACHER LABS
2225 S SPRINGER

NO. OF PIECES: 1 PKG. BOX ENV. SACK BQGE CTN.

CONTENTS:

SHIPPER'S NAME: D. FLEMING
 STREET ADDRESS:
 ORIGIN CITY & PROV.: WATSON LAKE BC

DESTINATION STATION: GREYHOUND LINES OF CANADA LTD.
 PHONE: 1970 TIME: 8 21 51 MONTH: 8 DAY: 21 YEAR: 81

CHARGE ACCOUNT: 27 ACTUAL WEIGHT: 27 LBS. TARIFF WEIGHT: LBS. DECLARED VALUE: \$

RECEIVED AT DESTINATION STATION: DATE: TIME: AM/PM: X CP

COMPANY TO: EXPRESS CHARGES \$ 14.70
 PICKUP CHARGES \$ 50
 CHARGES ADVANCED \$
 DELIVERY CHARGES \$
 TOTAL TO COLLECT \$ 14.70

PICK-UP CHARGE: 300
 BUS CHARGE: 14.70
 LIABILITY LIMITED TO \$5000 UNLESS GREATER VALUE DECLARED BY SHIPPER AND CHARGE PAID
 SHIPPER'S SIGNATURE: [Signature] DATE: 1970

5. CONSIGNEE'S RECEIPT **COLLECT**

The Carrier agrees to carry and deliver the packages described hereon upon the terms and conditions prescribed by the proper authority of the province in which this shipment originates and published in the tariff of the Carrier which is open for inspection by the public at the principal office of the Carrier and at the termini of each route over which the Carrier is licensed to operate, and to which the Shipper agrees by accepting this receipt.

Greyhound Package Express! EXPRESS RECEIPT (NON-NEGOTIABLE)

DESTINATION STATION: **BURNABY** PROV: **BC** FORWARDING AGENT: **304534591**

CONSIGNEE: **ROSS BACHER LAWS** PHONE: **653-0474** TIME: **8 27 87**

STREET ADDRESS: **2225 S. SPRINGCRE** CHARGE ACCOUNT: **117** ACTUAL WEIGHT: **1.75** LBS. TARIFF WEIGHT: **1.75** LBS. DECLARED VALUE: **\$**

NO. OF PIECES: **3** PKG BOX ENV SACK BGGE CTN OTHER

CONTENTS:

SHIPPER'S NAME: **HITCHINS** RECEIVED AT DESTINATION STATION: DATE: TIME: **X CP** RECEIVED IN GOOD ORDER UNLESS SPECIFIED:

STREET ADDRESS: **76 TWILIGHT CT.** COMPANY TO: **PICKUP CHARGE** **475** EXPRESS CHARGES: **\$ 58.95**

ORIGIN CITY & PROV: **MALDEN LAKE VT** BUS CHARGE: **59.45** PICKUP CHARGES: **\$**

SHIPPER'S SIGNATURE: **[Signature]** SERVICE CHARGE: **6.00** CHARGES ADVANCED: **\$**

NO: **1020** DATE: **8 27 87** AMOUNT: **\$ 59.4**

5. CONSIGNEE'S RECEIPT COLLECT

The Carrier agrees to carry and deliver the packages described hereon upon the terms and conditions prescribed by the proper authority of the province in which this shipment originates and published in the tariff of the Carrier which is open for inspection by the public at the principal office of the Carrier and at the termini of each route over which the Carrier is licensed to operate, and to which the Shipper agrees by accepting this receipt.

Greyhound Package Express! EXPRESS RECEIPT (NON-NEGOTIABLE)

DESTINATION STATION: **BURNABY** PROV: **BC** FORWARDING AGENT: **304534591**

CONSIGNEE: **ROSS BACHER LAWS** PHONE: **653-0474** TIME: **8 27 87**

STREET ADDRESS: **2225 S. SPRINGCRE** CHARGE ACCOUNT: **762** ACTUAL WEIGHT: **2** LBS. TARIFF WEIGHT: **2** LBS. DECLARED VALUE: **\$**

NO. OF PIECES: **2** PKG BOX ENV SACK BGGE CTN OTHER

CONTENTS:

SHIPPER'S NAME: **HITCHINS** RECEIVED AT DESTINATION STATION: DATE: TIME: **X CP** RECEIVED IN GOOD ORDER UNLESS SPECIFIED:

STREET ADDRESS: **76 TWILIGHT CT.** COMPANY TO: **PICKUP CHARGE** **3.00** EXPRESS CHARGES: **\$ 42.55**

ORIGIN CITY & PROV: **MALDEN LAKE VT** BUS CHARGE: **42.55** PICKUP CHARGES: **\$**

SHIPPER'S SIGNATURE: **[Signature]** SERVICE CHARGE: **5.00** CHARGES ADVANCED: **\$**

NO: **505** DATE: **8 27 87** AMOUNT: **\$ 42.55**

5. CONSIGNEE'S RECEIPT COLLECT

The Carrier agrees to carry and deliver the packages described hereon upon the terms and conditions prescribed by the proper authority of the province in which this shipment originates and published in the tariff of the Carrier which is open for inspection by the public at the principal office of the Carrier and at the termini of each route over which the Carrier is licensed to operate, and to which the Shipper agrees by accepting this receipt.

Greyhound Package Express! EXPRESS RECEIPT (NON-NEGOTIABLE)

DESTINATION STATION: **BURNABY** PROV: **BC** FORWARDING AGENT: **304534506**

CONSIGNEE: **ROSS BACHER LAWS** PHONE: **653-0474** TIME: **8 21 87**

STREET ADDRESS: **2225 S. SPRINGCRE** CHARGE ACCOUNT: **122** ACTUAL WEIGHT: **1.75** LBS. TARIFF WEIGHT: **1.75** LBS. DECLARED VALUE: **\$**

NO. OF PIECES: **3** PKG BOX ENV SACK BGGE CTN OTHER

CONTENTS:

SHIPPER'S NAME: **HITCHINS** RECEIVED AT DESTINATION STATION: DATE: TIME: **X CP** RECEIVED IN GOOD ORDER UNLESS SPECIFIED:

STREET ADDRESS: **76 TWILIGHT CT.** COMPANY TO: **PICKUP CHARGE** **475** EXPRESS CHARGES: **\$ 58.95**

ORIGIN CITY & PROV: **MALDEN LAKE VT** BUS CHARGE: **59.45** PICKUP CHARGES: **\$ 56**

SHIPPER'S SIGNATURE: **[Signature]** SERVICE CHARGE: **6.00** CHARGES ADVANCED: **\$**

NO: **1020** DATE: **8 21 87** AMOUNT: **\$ 59.4**

5. CONSIGNEE'S RECEIPT COLLECT

The Carrier agrees to carry and deliver the packages described hereon upon the terms and conditions prescribed by the proper authority of the province in which this shipment originates and published in the tariff of the Carrier which is open for inspection by the public at the principal office of the Carrier and at the termini of each route over which the Carrier is licensed to operate, and to which the Shipper agrees by accepting this receipt.

JOURNAL CITY ILL. PROV. ILL. 157-077/406 8/15/67
 CONSIGNEE: RIES BACHLER CARE
 STREET ADDRESS: 2225 S SPRINGFIELD
 NO. OF PIECES: 1
 PKG. BOX ENV. SAG BQGE CTN
 CONTENTS: 69
 SHIPPER'S NAME: D FLEMING
 STREET ADDRESS: Box 250
 ORIGIN CITY & PROV.: WATSON LAKE ILL.

CHARGE ACCOUNT	ACTUAL WEIGHT	TARIFF WEIGHT	DECLARED VALUE	MAX. VALUE
	21 1/2			

RECEIVED AT DESTINATION STATION: X P
 DATE: _____ TIME: _____
 RECEIVED IN GOOD ORDER UNLESS SPECIFIED

COMPANY CHARGE	300	EXPRESS CHARGES	\$ 16.90
BUS CHARGE	17.40	PICKUP CHARGES	\$ 5.00
LIABILITY LIMITED TO \$500 UNLESS GREATER VALUE DECLARED	200	CHARGES ADVANCED	\$
CHARGE PAID	2240	DELIVERY CHARGES	\$
SHIPPER'S SIGNATURE	[Signature]	TOTAL TO COLLECT	\$ 174.00

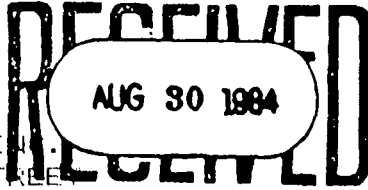
CONSIGNEE'S RECEIPT COLLECT
 I agree to carry and deliver the packages described hereon upon the terms and conditions prescribed by the proper authority of the carrier in which this shipment originates and published in the tariff of the Carrier which is open for inspection by the public at the principal office of the carrier and at the termini of each route over which the Carrier is licensed to operate, and to which the Shipper agrees by accepting this receipt.

ROSSBACHER LABORATORY LTD.

INVOICE

CANAMAX

2225 SOUTH SPRINGER AVENUE
 BURNABY, B.C. V5B 3N1
 TEL: (604) 299-6910



TO: CANAMAX RESOURCES INC.
 601-535 THURLOW STREET
 VANCOUVER B.C.

VANCOUVER OFFICE

INVOICE NO. : 4338

CERTIFICATE NO. : 84304

PROJECT: 7069 MT.HUNDERE

DATE ANALYSED : AUGUST 15 1984

QTY	DESCRIPTION	UNIT COST	NET COST
136 ✓	GEOCHEM ANALYSIS FOR 3 ELEMENTS	@ \$ 3.20 ✓	\$ 435.20 ✓
2 ✓	SILT PREF	@ \$ 0.60 ✓	\$ 1.20 ✓
128 ✓	SOIL PREF	@ \$ 0.60 ✓	\$ 76.80 ✓

SUBTOTAL \$ 513.20 ✓ 513.20 ✓

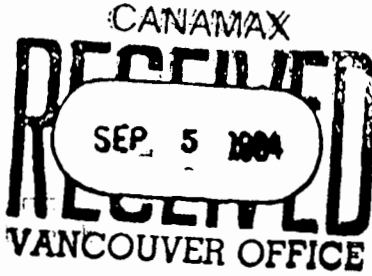
TOTAL : \$ 513.20 ✓

OK
 SB

ADD & EXT CORRECT *B*
 APPROVED *B. Kirsch*
 DATE *Aug 31/84*

ROSSBACHER LABORATORY LTD.

INVOICE



2225 SOUTH SPRINGER AVENUE
BURNABY, B.C. V5B 3N1
TEL: (604) 299-6910

101 Canamax Resources Ltd.
201-535 Thurlow Street
Vancouver B.C.

INVOICE NO. : 4359 *11/4367*

CERTIFICATE NO. : 84307

PROJECT: 7049 Mt. Henderson

DATE ANALYSED : August 15 1984

QTY	DESCRIPTION	UNIT COST	NET COST
200 ✓	GEOCHEM ANALYSIS FOR 3 ELEMENTS	\$ 3.89	\$ 778.00 ✓
196 ✓	SOIL SAMPLE PREP.	\$ 0.57	\$ 111.80 ✓
	SUBTOTAL		\$ 776.80 ✓ 776.80 ✓

TOTAL : \$ 776.80 ✓

OK
SR

APPROVED: *[Signature]* DATE: *Sept 5/84*

ROSSBACHER LABORATORY LTD.

INVOICE

CANAMAX

2225 SOUTH SPRINGER AVENUE
BURNABY, B.C. V5B 3N1
TEL: (604) 299-6910

RECEIVED
AUG 30 1984
VANCOUVER OFFICE

BY: CANAMAX RESOURCES
601-535 THURLOW STREET
VANCOUVER, B.C.

INVOICE NO. : 4359

CERTIFICATE NO. : 84316

PROJECT: 7069 MT. HUNDERE

DATE ANALYSED : AUGUST 20, 1984

QTY	DESCRIPTION	UNIT COST	NET COST
241 /	RECHEM ANALYSIS FOR 3 ELEMENTS	@ \$ 3.20 /	\$ 771.20 /
229 /	SOIL PREP	@ \$ 0.60 /	\$ 137.40 /
	SUBTOTAL		\$ 908.60 / 908.60 /

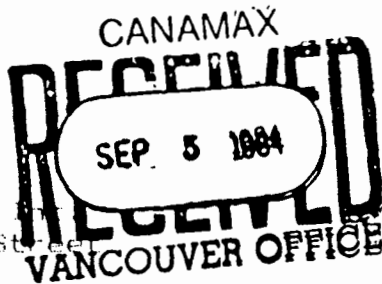
TOTAL : \$ 908.60 /

CC
SE

ADD & EXT CORRECT	DATE
<i>[Signature]</i> APPROVED	<i>Aug 31/84</i>

ROSSBACHER LABORATORY LTD.

INVOICE



2225 SOUTH SPRINGER AVENUE
 BURNABY, B.C. V5B 3N1
 TEL: (604) 299-6910

TO: Canamax Resources Ltd.
 601-535 Thurlow Street
 Vancouver B.C.

INVOICE NO. : 4371

CERTIFICATE NO. : 84316

PROJECT: 7069 Mt. Hundere

DATE ANALYSED : August 20, 1984

QTY	DESCRIPTION	UNIT COST	NET COST
2 ✓	GEOCHEM ANALYSIS FOR 3 ELEMENTS	@ \$ 3.20 ✓	\$ 6.40 ✓
360 ✓	GEOCHEM ANALYSIS FOR 4 ELEMENTS	@ \$ 3.70 ✓	\$1332.00 ✓
5 ✓	GEOCHEM ANALYSIS W	@ \$ 3.30 ✓	\$ 16.50 ✓
5 ✓	GEOCHEM ANALYSIS Au	@ \$ 3.75 ✓	\$ 18.75 ✓
2 ✓	ASSAY PREP. CHARGE	@ \$ 3.00 ✓	\$ 6.00 ✓
4 ✓	SILT PREP	@ \$ 0.60 ✓	\$ 2.40 ✓
338 ✓	SILT PREP	@ \$ 0.60 ✓	\$ 202.80 ✓

SUBTOTAL \$ 1584.85 ✓ 1584.85 ✓

TOTAL : \$ 1584.85 ✓

OK
 SB

ADD & EXT CORRECT *B.* DATE *SEP 5/84*
 APPROVED *[Signature]*

CR. 63 02 2 SEP 06 1984

ISSBACHER LABORATORY LTD.

INVOICE

2225 S. SPRINGER AVENUE
 BURNABY, B.C. V5B 3N1
 TEL : (604) 299 - 6910

CANAMAX

RECEIVED
 SEP 25 1984
RECEIVED
 VANCOUVER OFFICE

TO : CANAMAX RESOURCES INC.
 601-535 THURLOW STREET
 VANCOUVER, B.C.
 PROJECT No.: 7069 Mt. Hunderer

INVOICE No.: 4425
 CERTIFICATE No.: 84333
 DATE ANALYSED: AUGUST 24, 1984
 FILE NAME: CX069333

QTY.	DESCRIPTION	UNIT COST	SUB-TOTAL	TOTAL
295 ✓	GEOCHEM ANALYSIS FOR 4 ELEMENT(S)	\$ 3.70	\$1091.50 ✓	
281 ✓	SOIL/SILT PREPARATION	0.60	168.60 ✓	
				\$ 1260.10 ✓
				\$ 1260.10 ✓

OK
SB

ADD & EXT CORRECT *B*
 APPROVED *[Signature]*
 DATE *SEP 26 1984*

TERMS - NET 30 DAYS **OK 70 / 18 OCT 04 1984**

ROSSBACHER LABORATORY LTD.

2225 S. SPRINGER AVENUE
 BURNABY, B.C. V5B 3N1
 TEL : (604) 299 - 6910

INVOICE

TO : CANAMAX RESOURCES LTD.
 601-535 THURLOW STREET
 VANCOUVER, B.C.
 PROJECT No.: 7069 ML. HOPKINS

CANAMAX
RECEIVED
 SEP. 7 1984
 VANCOUVER OFFICE

INVOICE No.: 4377
 CERTIFICATE No.: M4372
 DATE ANALYSED: AUGUST 31, 1984
 FILE NAME: CX069352

QTY.	DESCRIPTION	UNIT COST	SUB-TOTAL	TOTAL
385 ✓	GEOCHEM ANALYSIS FOR 4 ELEMENT(S)	\$ 3.70	\$1424.50 ✓	
366 ✓	SOIL/SILT PREPARATION	0.60	219.60 ✓	
				\$ 1644.10 ✓

OK
 SB

ADD & EXT CORRECT *B*
 APPROVED *[Signature]*
 DATE *Sept 10/84*

TERMS - NET 30 DAYS CK. 64/18 SEP 13 1984

NAME AND ADDRESS - PLEASE PRINT

CANAMAX RESOURCES, INC

NORCAN LEASING LTD.
917, 4 ALASKA HIGHWAY, WHITEHORSE, YUKON Y1A 3E5
1-403-688-2137

10 KILOMETERS IN 2 9 4 3 0

11 KILOMETERS OUT 2 3 5 4 0

12 MIN KILOMETERS 13 KILOMETERS DRIVEN 5890

14. DATE & TIME IN Sept 7/84 17:00
15. DATE & TIME OUT July 17/84

16. DAYS UTILIZED
17. @ 18 279.54
Km Driven 5890
Free Km - 4337
Km charged - 1553

18. TIME @ 19. RATE
Sept 1-7/84 @ \$12.00
7 @ \$42.50 297.50
@ \$24.00 127.50

20. SUB TOTAL 577.04
21.
22. TOTAL TIME & KM

23. ADDITIONAL CHARGES
24. SUB TOTAL
25. COLLISION DAMAGE WAIVER. SEE PARA 7
DAYS @
WKS. @ SELF-INSURED
MTHS. @
26. AMOUNT DEDUCTIBLE \$2500
27. SUB TOTAL

28. TAX: % OF SUB TOTAL

29. FUEL GAL @ \$ FUEL 24 = 264 63.36
TICKET NO. 30. TOTAL CHARGE 640.40

31. ROAD EXPENSES
32. NET CHARGES 640.40
33. DEPOSITS 1 2
TOTAL DEPOSIT

34. TOTAL AMOUNT DUE 640.40

35. CASH REFUND REC'D BY 03916

36. IN BY SIGNATURE

CANAMAX RECEIVED
SEP 14 1984
VANCOUVER OFFICE

RENTER IS RESPONSIBLE FOR ALL OVERHEAD AND CARGO DAMAGES WHETHER OR NOT THE COLLISION DAMAGE WAIVER IS ACCEPTED

2. TYPE OF PAYMENT:
 CASH
 CC
 DIR BILL
C/C NAME AUTH'D BY

3. VEHICLE NO. 610204 MAKE GMC TYPE 4x4 P.U.P.
LICENSE NO. R13L-8 PROVINCE Y.T. COMMODITY HAULED W/CANOPY
WT. LIMIT GVW/GCW WILL BE USED IN PROVINCES OR STATES OF

4. OPTIONAL EQUIPMENT/MISC JACKALL + 4WAY \$ 75.00
VEHICLE WILL RETURNED DAY MTH YR TO
INTERCITY CHARGE \$
CHECK IN DAMAGES \$

5. ADDITIONAL TERMS AND CONDITIONS:
NOTE - 2-SPARE TINES Pick-up
TRADE FOR 2 WHEEL Pick-up
61079 # RCL-9

THIS IS YOUR INVOICE PAYABLE ON RECEIPT TO:
NORCAN LEASING LTD.
917, 4 ALASKA HIGHWAY, WHITEHORSE, YUKON Y1A 3E5

6. I HAVE READ THE TERMS AND CONDITIONS ON BOTH SIDES OF THIS RENTAL AGREEMENT AND AGREE HERETO.
Signature: [Handwritten Signature]

CUSTOMER IS LIABLE FOR ALL PARKING AND TRAFFIC VIOLATIONS

7. DRIVER NAME Tony Huttons AGE
ADDRESS On Eska
LICENSE PROV EXP DATE
ADDRESS CORRECT DATE

8. OUT BY SIGNATURE [Signature] DATE Sept 14/84

9. WHILE ON THE ROAD
OBTAIN RECEIPTS FOR ALL REIMBURSABLE EXPENSES AND PRESENT THEM WITH THIS COPY AT CHECK IN
REPORT ACCIDENTS IMMEDIATELY TO LOCAL POLICE AND CALL NORCAN COLLECT
IF DELAYED IN RETURNING VEHICLE PLEASE CALL NORCAN COLLECT

10. GAS NOT INCLUDED IN RATES DL 68/13 SEP 27 1984



7069

NAME AND ADDRESS - PLEASE PRINT

Canamax Resources Inc.



NORCAN LEASING LTD.
917, 4 ALASKA HIGHWAY, WHITEHORSE, YUKON Y1A 3E5
1-403-668-2137

CANAMAX RECEIVED
SEP 10 1984
VANCOUVER OFFICE

10. KILOMETERS IN					
11. KILOMETERS OUT					
12. MIN KILOMETERS				13. KILOMETERS DRIVEN	
14. DATE & TIME IN	August 1 - 31/84		15. DATE & TIME OUT		

OCCUPATION:

2. TYPE OF PAYMENT:
 CASH
 CC DIR BILL
 C/C NAME: _____ AUTH'D BY: _____

3. VEHICLE NO. 6 1 0 2 0 4 MAKE GMC TYPE 4x4 Pickup w/canopy
 LICENSE NO. RBE-8 PROVINCE Y. T. COMMODITY HAULED
 WT. LIMIT GWW/GCW WILL BE USED IN PROVINCES OR STATES OF

4. OPTIONAL EQUIPMENT/MISC \$ _____
 VEHICLE WILL BE RETURNED DAY MTH YR TO \$ _____
 INTERCITY CHARGE \$ _____
 CHECK IN DAMAGES \$ _____

5. ADDITIONAL TERMS AND CONDITIONS:

**THIS IS YOUR INVOICE PAYABLE ON RECEIPT TO:
NORCAN LEASING LTD.
917, 4 ALASKA HIGHWAY, WHITEHORSE, YUKON Y1A 3E5**

6. I HAVE READ THE TERMS AND CONDITIONS ON BOTH SIDES OF THIS RENTAL AGREEMENT AND AGREE HERETO.
 X See Master 03916 *ACH 1769*
 SIGNATURE
 CUSTOMER IS LIABLE FOR ALL PARKING AND TRAFFIC VIOLATIONS

7. DRIVER NAME _____ AGE _____
 ADDRESS _____
 LICENSE _____ PROV _____ EXP DATE _____
 CK 66/13 SEP 20 1984
 OUT BY SIGNATURE _____

16. TIME @ \$	19. RATE @ \$	
1 @ \$ 1275.00		1275.00
20. SUB TOTAL		1275.00
21. TOTAL TIME & KM		
22. ADDITIONAL CHARGES		
23. COLLISION DAMAGE WAIVER. SEE PARA. 7	ACCEPTS	DECLINES
DAYS <input type="checkbox"/> @		
WKS. <input type="checkbox"/> @		
MTHS. <input type="checkbox"/> @	x	x
24. SUB TOTAL		
25. AMOUNT DEDUCTIBLE \$		27. SUB TOTAL

28. TAX: % OF SUB TOTAL

29. FUEL GAL @ \$	FUEL	
TICKET NO	30. TOTAL CHARGE	1275.00

31. ROAD EXPENSES	
32. NET CHARGES	1275.00
TOTAL DEPOSIT	

34. TOTAL AMOUNT DUE **1275.00**

35. CASH REFUND REC'D BY 04430
 36. IN BY SIGNATURE

THIS INVOICE NUMBER MUST APPEAR ON ALL CORRESPONDENCE AND REMITTANCES



FEATURES G.M. CARS & TRUCKS

WHILE ON THE ROAD. OBTAIN RECEIPTS FOR ALL REIMBURSABLE EXPENSES AND PRESENT THEM WITH THIS COPY AT CHECK-IN. REPORT ACCIDENTS IMMEDIATELY TO LOCAL POLICE AND CALL NORCAN COLLECT IF DELAYED IN RETURNING VEHICLE PLEASE CALL NORCAN COLLECT

GAS NOT INCLUDED IN RATES

WHITE - ORIGINAL • YELLOW - CUSTOMER COPY • PINK - INVOICE COPY • GREEN - ACCTS RECEIVABLE • BLUE - VEHICLE FILE

APPENDIX II

Statement of Qualifications

STATEMENT OF QUALIFICATIONS

NAME: . A.C. Hitchins

ADDRESS: 601-535 Thurlow Street,
Vancouver, B.C. V6E 3L6

EDUCATION: University of Toronto - B.A. Sc. 1970
University of Toronto - M.Sc. 1973

EXPERIENCE: AMAX of Canada Limited - Staff Geologist - 1974 - 1983
Canamax Resources Inc. " " 1983 - to Present

STATEMENT OF QUALIFICATIONS

NAME D.B. Fleming

ADDRESS #6 - 2165 1st Ave.,
Vancouver, B.C. V6K 1E7

EDUCATION B.Sc. Geology 1979
University of B.C. Vancouver

EXPERIENCE 1976-1977 Seumotech (64) Ltd. - Explosives assistant
1978 AMAX Minerals - Field Assistant
1979 AMAX Minerals - Field Assistant
1980 AMAX of Canada Limited - Field Assistant
1981 CSR Minerals, Sydney, Australia - Contract
Geologist
1982 AMAX Minerals Exploration - Senior Assistant
1983 Canamax Resources Inc. - Senior Assistant

STATEMENT OF QUALIFICATIONS

NAME : W.H. Halleran

ADDRESS Box 793,
Fort St. James, B.C.
VOJ 1P0

EDUCATION 1979-1983
University of British Columbia
Bachelor of Science in Geology, May 1983

EXPERIENCE 1979 - 1982
Archer, Cathro and Assoc. Ltd.
Senior Assistant and Prospector
1983
Canamax Resources Inc.
Geologist
1984 (Summer)
Canamax Resources Inc.
Geologist (Summer)

STATEMENT OF QUALIFICATIONS

NAME John A. Nicholson

ADDRESS P.O. Box 567
Squamish, B.C. V0N 3G0

EDUCATION University of British Columbia (1981-1984) 3rd yr. Geology

EXPERIENCE 1982-83 - Riocanex Inc. - Assistant Geologist
1984 - Canamax Resources Inc. - Temp. Geologist

STATEMENT OF QUALIFICATIONS

NAME S.B. Goertz

ADDRESS 1038 Marigold Avenue,
North Vancouver, B.C.
V7R 2E2

EDUCATION Capilano College - Sept. 1980 - April 1982
Science (general)
University of British Columbia - Sept. 1982
Geology (U2 major)

EXPERIENCE June 1981 - August 1981
Chevron Standard Ltd. - Geological Trainee
June 1982 - August 1982
Chevron Standard Ltd. - Geological Trainee
1983 Field Season
Canamax Resources Inc. - Field Assistant
1984 Field Season
Canamax Resources Inc. - Field Assistant

STATEMENT OF QUALIFICATIONS

NAME	E.T. Robinson
ADDRESS	Old Ferry Road, General Delivery, Monte Creek, B.C. VOE 2MO
EDUCATION	1980-1982 - Cariboo College Geology Correspondence Mineralogy Course - from Ministry of Education Victoria, B.C.
EXPERIENCE	Summer 1981 - Sulpetro Minerals Ltd. Junior Field Assistant Sept. 1981- - Cariboo College Dec. 1981 Geology Lab. Assistant Summer 1982 - AMAX Minerals Exploration Geological Assistant Summer 1983 - Canamax Resources Inc. Geological Assistant Summer 1984 - Canamax Resources Inc. Geological Assistant

STATEMENT OF QUALIFICATIONS

NAME	Michael R. Burke
ADDRESS	46202 Riverside Drive Chilliwack, B.C. V2P 3L3
EDUCATION	University of B.C. - 1st yr. Science 1979-80 Fraser Valley College - 1st yr. Science 1982-83 Fraser Valley College - 2nd yr. Science 1982-84
EXPERIENCE	1984 - Temporary Assistant, Canamax Resources (Summer season)

STATEMENT OF QUALIFICATIONS

NAME B.J. Henderson

ADDRESS 371 Francis Avenue
Kelowna, B.C. V1Y 5E8

EDUCATION University of Victoria - B.A. - Political Science, 1984

EXPERIENCE 1983 - Canamax Resources Inc. - Field Assistant (Summer)
1984 - Canamax Resources Inc. - Field Assistant (Summer)

APPENDIX III

Geochemical Results and Analytical Methods

ROSBACH LABORATORY LTD.

2225 S. SPRINGER AVENUE
 BURNABY, B.C. V5B 3M1
 TEL : (604) 299 - 8910

CERTIFICATE OF ANALYSIS

TO : CANAMAX RESOURCES INC.
 601-535 THURLOW STREET
 VANCOUVER, B.C.

CERTIFICATE No. : 84316 - 6
 INVOICE No. : 4359
 DATE ANALYSED : AUGUST 20, 1984

PROJECT No. : 7069 MI. HUNDERE

FILE NAME : CX069316

PRE	SAMPLE NAME	Ag	Zn	Pb
S	105A10 84 POS 97	0.2	114	26
S	98	0.2	90	16
S	84 POS 99	0.2	70	16
X	STD B	0.8	136	96
S	84 POS 100	0.2	72	16
S	101	0.6	88	26
S	102	0.6	82	16
S	103	0.4	90	18
S	104	0.2	88	16
S	105	0.2	126	20
S	106	0.2	78	18
S	107	0.2	124	36
S	108	2.6	152	720
S	84 POS 109	0.6	256	122
S	110	0.6	1120	620
S	111	0.4	160	74
S	112	0.4	540	184
S	113	0.2	720	420
S	114	0.4	82	36
S	115	0.2	62	42
S	116	0.6	90	48
S	117	0.2	96	18
S	84 POS 118	0.2	80	14
X	STD C	0.6	98	72
S	84 POS 119	0.2	80	16
S	121	0.2	80	14
S	122	0.2	76	14
S	123	0.2	92	22
S	124	0.2	104	22
S	125	0.2	106	18
S	126	0.2	74	14
S	127	0.2	96	30
S	128	0.2	100	90
S	84 POS 129	0.2	152	92
S	130	2.4	218	360
S	84 POS 120	0.2	82	22

CERTIFIED BY :

J. Rosbach

ROSBACH LABORATORY LTD.

2225 S. SPRINGER AVENUE
 BURNABY, B.C. V5B 3M1
 TEL : (604) 299 - 8910

CERTIFICATE OF ANALYSIS

TO : CANAMAX RESOURCES INC.
 601-535 THURLOW STREET
 VANCOUVER, B.C.
 PROJECT No. : 7069 MI. HUNDERE

CERTIFICATE No. : 84316 - 1
 INVOICE No. : 4449
 DATE ANALYSED : AUGUST 29, 1984
 FILE NAME : CX069316

PRE	SAMPLE NAME	Mo	Cu	Ag	Zn	Pb	W	Sn	As
S	105A10 84 PTS 171			1.0	104	34			
S	172			0.6	171	40			
S	173			0.4	152	38			
S	175			0.6	168	56			
S	176			0.4	166	42			
S	177			0.4	166	50			
S	178			0.6	170	46			
S	179			0.4	142	38			
S	84 PTS 180			0.2	198	62			
S	181			0.2	312	102			
S	182			0.4	500	304			
S	183			0.4	218	88			
S	184			0.4	720	248			
S	84 PTS 185			0.2	680	412			
S	STD E			0.2	152	20			
S	84 PTT 174			0.6	92	30			
T	186			0.6	116	60			
A	84 PTA 187								
A	188								
A	190								
A	149								
A	158								
A	159								
A	160								
A	84 PTA 161								
A	162								
A	163								
A	164								
A	165								
A	166								
A	167								
A	168								
A	169								
A	84 PTA 170								
X	STD D/W								

CERTIFIED BY :

J. Rosbach

JSSBACHER LABORATORY LTD.

CERTIFICATE OF ANALYSIS

2225 S. SPRINGER AVENUE
 BURNABY, B.C. V5H 3M1
 TEL : (604) 299 - 6910

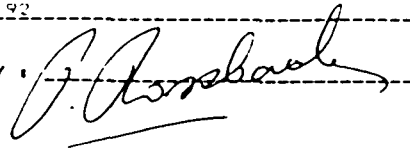
TO : Canamax Resources Inc.
 601-535 Thurlow Street
 Vancouver B.C.

CERTIFICATE No. : 84307 - 1
 INVOICE No. : 4359
 DATE ANALYSED : August 15 1984

PROJECT No. : 7069 Mt. Hendero FILE NAME : CX069307

SAMPLE NAME	PPM		
	Ag	Zn	Pb
105A10 84 FIS 307 ✓			
308 ✓			
309 ✓			
310 ✓			
311 ✓			
312 ✓			
313 ✓			
314 ✓			
315 ✓			
84 FIS 316 ✓			
317 ✓			
318 ✓			
319 ✓			
320 ✓			
321 ✓			
322 ✓			
323 ✓	0.2	78	18
324 ✓	0.2	80	22
84 FIS 325 ✓	0.2	76	12
SID E	0.8	130	90
84 FIS 326 ✓	0.2	58	14
327 ✓	0.2	74	16
328 ✓	0.2	98	18
329 ✓	0.2	96	28
330 ✓	0.2	108	28
331 ✓	0.2	94	28
332 ✓	0.2	142	48
333 ✓	0.2	138	38
334 ✓	0.2	132	74
84 FIS 335 ✓	0.4	86	32
336 ✓	0.4	102	64
337 ✓	0.2	90	16
338 ✓	0.2	90	12
339 ✓	0.2	60	12
340 ✓	0.2	78	14
341 ✓	0.2	62	8
342 ✓	0.2	50	18
343 ✓	0.2	62	8
84 FIS 344 ✓	0.2	68	18
SID E	1.0	124	92

CERTIFIED BY :



JSSBACHER LABORATORY LTD.

CERTIFICATE OF ANALYSIS

2225 S. SPRINGER AVENUE
 BURNABY, B.C. V5H 3M1
 TEL : (604) 299 - 6910

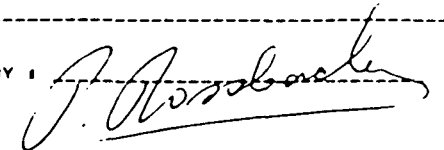
TO : Canamax Resources Inc.
 601-535 Thurlow Street
 Vancouver B.C.

CERTIFICATE No. : 84307 - 2
 INVOICE No. : 4359
 DATE ANALYSED : August 15 1984

PROJECT No. : 7069 Mt. Hendero FILE NAME : CX069307

SAMPLE NAME	PPM		
	Ag	Zn	Pb
PRE S 105A10 84 FIS 345 ✓	0.2	56	22
S 346 ✓	0.2	130	28
S 347 ✓	0.2	48	18
S 348 ✓	0.2	116	40
S 349 ✓	0.2	58	20
S 350 ✓	0.4	44	36
S 84 FIS 351 ✓	1.0	34	16

CERTIFIED BY :



JSSBACHER LABORATORY LTD.

2225 S. SPRINGER AVENUE
 BURNABY, B.C. V5B 3M1
 TEL : (604) 299 - 6910

CERTIFICATE OF ANALYSIS

TO : Canadian Resources Inc.
 601-535 Thurlow Street
 Vancouver B.C.

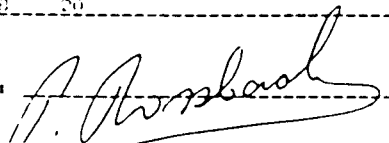
CERTIFICATE No. : B4316 - 6
 INVOICE No. : 4371
 DATE ANALYSED : August 20, 1984

PROJECT No. : 7069 Mt. Hundere

FILE NAME : CX069316

SAMPLE NAME	PPM	PPM	PPM	PPM	PPM	PPB
	Cu	Ag	Zn	Pb	W	Au
105A10 B4 FNS 505 ✓						
506 ✓						
507 ✓						
508 ✓						
509 ✓						
510 ✓						
511 ✓						
512 ✓						
513 ✓						
B4 FNS 514 ✓						
515 ✓						
516 ✓						
L 517 ✓						
L 518 ✓						
S 519 ✓						
520 ✓						
521 ✓						
522 ✓						
B4 FNS 523 ✓						
STD E						
B4 FNS 524 ✓						
525 ✓						
526 ✓						
527 ✓						
528 ✓						
529 ✓						
530 ✓						
531 ✓						
532 ✓						
B4 FNS 533 ✓						
534 ✓						
535 ✓						
536 ✓						
537 ✓	10.2	134	72			
538 ✓	0.2	148	50			
539 ✓	0.1	82	24			
540 ✓	0.2	158	30			
541 ✓	0.4	84	46			
B4 FNS 542 ✓	0.6	50	56			
STD E	0.2	128	20			

CERTIFIED BY :



JSSBACHER LABORATORY LTD.

2225 S. SPRINGER AVENUE
 BURNABY, B.C. V5B 3M1
 TEL : (604) 299 - 6910

CERTIFICATE OF ANALYSIS

TO : Canadian Resources Inc.
 601-535 Thurlow Street
 Vancouver B.C.

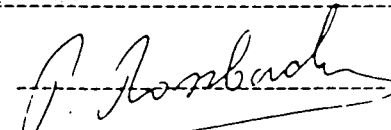
CERTIFICATE No. : B4316 - 7
 INVOICE No. : 4371
 DATE ANALYSED : August 20, 1984

PROJECT No. : 7069 Mt. Hundere

FILE NAME : CX069316

PRE FIX	SAMPLE NAME	PPM	PPM	PPM	PPM	PPM	PPB
		Cu	Ag	Zn	Pb	W	Au
S	105A10 B4 FNS 543 ✓	0.4	106	34			
S	544 ✓	0.6	92	40			
S	545 ✓	0.8	274	42			
S	546 ✓	0.2	84	40			
S	547 ✓	0.2	386	136			
S	548 ✓	0.2	392	106			
S	549 ✓	0.2	192	52			
S	550 ✓	0.8	492	210			
S	551 ✓	0.2	222	106			
S	B4 FNS 552 ✓	0.2	172	68			
S	553 ✓	0.2	940	142			
S	554 ✓	0.2	224	58			
S	555 ✓	1.0	124	74			
S	556 ✓	1.0	134	60			
S	557 ✓	0.4	158	50			
S	558 ✓	0.4	136	38			
S	559 ✓	0.2	82	14			
S	560 ✓	0.2	106	40			
S	B4 FNS 561 ✓	0.2	74	8			
X	STD C	0.6	104	78			
S	B4 FNS 562 ✓	0.2	114	38			
S	563 ✓	0.6	498	152			
S	564 ✓	0.2	468	212			
S	565 ✓	0.4	492	176			
L	L 566 ✓	0.4	760	412	1	10	
S	S 567 ✓	0.4	270	270			
S	568 ✓	0.2	244	136			
S	569 ✓	0.2	280	100			
S	570 ✓	0.6	820	492			
S	571 ✓	0.2	394	128			
S	572 ✓	0.2	318	128			
S	573 ✓	0.4	250	180			
S	574 ✓	0.8	134	96			
S	575 ✓	0.2	90	60			
S	576 ✓	0.6	232	50			
S	577 ✓	0.6	338	142			
S	578 ✓	0.6	292	204			
S	579 ✓	1.0	184	74			
S	580 ✓	0.4	166	46			
S	STD C	184	0.6	112	80		

CERTIFIED BY :



JSSBACHER LABORATORY LTD.

2225 S. SPRINGER AVENUE
BURNABY, B.C. V5B 3N1
TEL : (604) 299 - 6910

CERTIFICATE OF ANALYSIS

TO : Canamax Resources Inc.
501-525 Thurlow Street
Vancouver B.C.

CERTIFICATE No. : 84316 - 8
INVOICE No. : 4371
DATE ANALYSED : August 20, 1984

PROJECT No. : 7069 Mt. Hundere

FILE NAME : CX069316

SAMPLE NAME	PPM	PPM	PPM	PPM	PPM	PPB
	Cu	Ag	Zn	Pb	W	Au
10SA10 84 FNS 581 ✓	0.6	194	54			
582 ✓	1.0	640	148			
583 ✓	0.6	370	194			
584 ✓	0.2	192	40			
585 ✓	0.6	262	58			
586 ✓	0.4	204	36			
587 ✓	0.4	282	80			
588 ✓	0.4	162	30			
589 ✓	0.4	134	24			
84 FNS 590 ✓	0.2	76	20			
591 ✓	0.2	72	20			
592 ✓	0.2	44	14			
593 ✓	0.4	178	20			
594 ✓	0.2	108	22			
595 ✓	0.4	92	18			
596 ✓	0.2	74	20			
597 ✓	0.2	82	20			
598 ✓	0.4	80	22			
84 FNS 599 ✓	0.4	162	30			
STD C	0.6	114	80			
84 FNS 600 ✓	0.2	98	26			
601 ✓	0.4	92	18			
602 ✓	0.4	118	22			
603 ✓	0.4	212	28			
604 ✓	0.8	124	42			
605 ✓	2.2	292	78			
606 ✓	1.6	162	56			
607 ✓	0.4	234	62			
608 ✓	1.0	132	30			
84 FNS 609 ✓	1.8	164	46			
610 ✓	1.0	84	26			
611 ✓	1.0	168	142			
612 ✓	1.0	274	104			
613 ✓	2.0	920	284			
614 ✓	1.0	540	86			
615 ✓	0.8	322	88			
616 ✓	1.2	114	36			
617 ✓	0.6	192	56			
84 FNS 618 ✓	0.4	166	64			
STD C	0.2	114	76			

CERTIFIED BY :

J. J. Stach

JSSBACHER LABORATORY LTD.

2225 S. SPRINGER AVENUE
BURNABY, B.C. V5B 3N1
TEL : (604) 299 - 6910

CERTIFICATE OF ANALYSIS

TO : Canamax Resources Inc.
501-525 Thurlow Street
Vancouver B.C.

CERTIFICATE No. : 84316 - 9
INVOICE No. : 4371
DATE ANALYSED : August 20, 1984

PROJECT No. : 7069 Mt. Hundere

FILE NAME : CX069316

PRE FIX	SAMPLE NAME	PPM	PPM	PPM	PPM	PPM	PPB
		Cu	Ag	Zn	Pb	W	Au
S	10SA10 84 FNS 619 ✓	0.6	220	66			
S	620 ✓	0.6	456	202			
S	621 ✓	0.2	218	66			
S	622 ✓	0.4	82	54			
S	623 ✓	0.4	174	40			
S	624 ✓	0.2	92	28			
S	625 ✓	0.2	158	58			
S	626 ✓	1.0	122	78			
S	627 ✓	0.4	92	24			
S	84 FNS 628 ✓	0.4	82	22			
S	629 ✓	0.2	78	26			
S	630 ✓	0.2	84	20			
S	631 ✓	0.4	54	18			
S	632 ✓	0.2	74	18			
S	633 ✓	0.2	68	16			
S	634 ✓	0.2	78	16			
S	84 FNS 635 ✓	0.2	82	20			
S	636 ✓	0.8	406	344			
S	84 FNS 637 ✓	0.4	840	278			
X	STD C	0.6	126	80			
S	84 FNS 638 ✓	0.6	382	130			
S	639 ✓	0.6	374	106			
S	640 ✓	0.2	192	120			
S	941 ✓	0.2	114	64			
S	642 ✓	0.8	210	46			
S	643 ✓	1.2	640	94			
S	644 ✓	0.2	112	20			
S	645 ✓	0.4	116	32			
S	646 ✓	0.2	114	56			
S	84 FNS 647 ✓	0.2	66	20			
S	648 ✓	0.2	102	20			
S	649 ✓	0.2	82	18			
S	650 ✓	0.2	94	22			
S	651 ✓	0.2	50	20			
S	652 ✓	0.2	98	18			
S	653 ✓	0.2	50	12			
S	654 ✓	0.2	78	18			
S	655 ✓	0.2	42	10			
S	84 FNS 656 ✓	0.2	226	78			
S	STD C	0.2	114	80			

CERTIFIED BY :

J. J. Stach

JSSBACHER LABORATORY LTD.

2225 S. SPRINGER AVENUE
BURNABY, B.C. V5B 3N1
TEL : (604) 299 - 6910

CERTIFICATE OF ANALYSIS

Canamax Resources Inc.
601-525 Thurlow Street
Vancouver, B.C.

CERTIFICATE No. : 84316 - 10
INVOICE No. : 4371
DATE ANALYSED : August 20, 1984

PROJECT No. : 7069 Mt. Hundere

FILE NAME : CX069316

SAMPLE NAME	PFM Cu	PFM Ag	PFM Zn	PFM Pb	PFM W	PPB Au
105A10 B4 FNS 657 ✓	0.2	338	108			
658 ✓	0.2	242	50			
659 ✓	0.2	182	90			
660 ✓	0.2	108	50			
661 ✓	0.2	150	44			
662 ✓	0.4	256	66			
663 ✓	1.0	158	96			
664 ✓	0.4	400	148			
665 ✓	0.4	840	1020			
B4 FNS 666 ✓	0.8	540	244			
667 ✓	0.4	760	178			
668 ✓	0.2	132	34			
669 ✓	0.2	112	30			
670 ✓	0.2	98	24			
671 ✓	0.2	88	20			
672 ✓	0.4	86	30			
673 ✓	0.2	110	42			
674 ✓	0.2	121	34			
B4 FNS 675 ✓	0.2	74	30			
STD C	0.6	119	80			
B4 FNS 676 ✓	0.2	86	16			
677 ✓	0.2	82	18			
678 ✓	0.2	82	12			
679 ✓	0.2	68	14			
680 ✓	0.2	86	16			
681 ✓	0.2	82	14			
682 ✓	0.2	92	18			
683 ✓	0.2	228	28			
684 ✓	0.2	44	8			
B4 FNS 685 ✓	0.2	52	8			
686 ✓	0.2	48	6			
687 ✓	0.2	48	8			
688 ✓	1.2	34	8			
689 ✓	0.4	28	8			
690 ✓	1.0	46	10			
691 ✓	0.4	114	16			
692 ✓	0.2	18	16			
693 ✓	0.6	60	12			
B4 FNS 694 ✓	0.8	34	12			
STD L	0.6	108	28			

CERTIFIED BY :

J. H. Rossbacher

ROSSBACHER LABORATORY LTD.

2225 S. SPRINGER AVENUE
BURNABY, B.C. V5B 3N1
TEL : (604) 299 - 6910

CERTIFICATE OF ANALYSIS

TO : CANIMAX RESOURCES INC.
601-525 THURLOW STREET
VANCOUVER, B.C.
PROJECT No. : 7069 Mt. Hundere

CERTIFICATE No. : 84316 - 11
INVOICE No. : 4425
DATE ANALYSED : AUGUST 24, 1984
FILE NAME : CX069333

PRE FIX	SAMPLE NAME	PFM Cu	PFM Ag	PFM Zn	PFM Pb
S	105A10 B4 FNS 700 ✓	0.6	130	40	
S	701 ✓	0.4	78	32	
S	702 ✓	0.4	110	18	
S	703 ✓	0.4	128	20	
S	704 ✓	0.4	104	30	
S	705 ✓	1.2	136	36	
S	706 ✓	0.2	206	38	
S	707 ✓	0.4	142	48	
S	708 ✓	0.4	160	54	
S	B4 FNS 709 ✓	0.4	52	20	
S	710 ✓	0.4	82	18	
S	711 ✓	0.2	66	18	
S	712 ✓	0.4	36	16	
S	713 ✓	0.2	82	22	
S	714 ✓	0.6	96	16	
S	715 ✓	0.8	108	22	
S	716 ✓	1.8	140	68	
S	717 ✓	0.4	188	22	
S	B4 FNS 718 ✓	0.4	114	18	
X	STD B	1.0	130	86	
S	B4 FNS 719 ✓	1.2	62	50	
S	720 ✓	0.6	104	30	
S	721 ✓	0.4	112	38	
S	722 ✓	0.4	98	28	
S	723 ✓	0.6	122	44	
S	724 ✓	0.6	62	42	
S	725 ✓	1.2	142	30	
S	726 ✓	1.2	46	30	
S	727 ✓	1.8	208	74	
S	B4 FNS 728 ✓	0.4	236	52	
S	729 ✓	0.2	130	46	
S	730 ✓	0.4	126	44	
S	731 ✓	0.4	78	22	
S	732 ✓	0.8	174	102	
S	733 ✓	1.8	62	36	
S	734 ✓	0.8	92	20	
S	735 ✓	2.0	90	40	
S	736 ✓	1.0	112	30	
S	B4 FNS 737 ✓	0.6	138	46	
X	STD B	1.0	138	94	

CERTIFIED BY :

J. H. Rossbacher

ROBBACHER LABORATORY LTD.

CERTIFICATE OF ANALYSIS

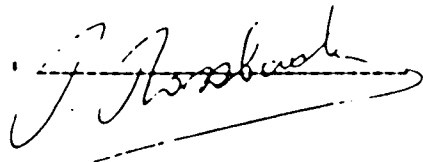
TO: CANAMAX RESOURCES INC.
601-535 THURLOW STREET
VANCOUVER, B.C.
PROJECT No.: 7069 Mt. Hundere

2225 S. SPRINGER AVENUE
BURNABY, B.C. V5B 3K1
TEL: (604) 299-6910

CERTIFICATE No.: 84333 - 2
INVOICE No.: 4425
DATE ANALYSED: AUGUST 24, 1984
FILE NAME: C1069333

SAMPLE NAME	PPM	PPM	PPM	PPM
	Cu	Ag	Zn	Pb
105A10 84 PNS 738 ✓	1.2	126	32	
739 ✓	0.2	92	26	
740 ✓	0.6	166	34	
741 ✓	0.4	60	18	
742 ✓	0.6	122	54	
743 ✓	0.8	140	72	
744 ✓	1.0	54	18	
745 ✓	1.4	114	24	
746 ✓	1.0	166	26	
84 PNS 747 ✓	0.8	118	18	
748 ✓	0.4	72	20	
749 ✓	0.8	58	38	
750 ✓	0.2	54	12	
751 ✓	0.6	118	24	
752 ✓	0.2	78	24	
753 ✓	0.4	46	12	
754 ✓	2.8	80	32	
755 ✓	0.8	60	24	
84 PNS 756 ✓	0.8	190	64	
STD 0	3.8	468	96	
84 PNS 757 ✓	2.0	168	104	
758 ✓	0.8	146	24	
759 ✓	0.4	100	28	
760 ✓	0.4	162	118	
761 ✓	0.4	116	102	
84 PNS 762 ✓	0.4	88	30	

CERTIFIED BY :



ROBBACHER LABORATORY LTD.

CERTIFICATE OF ANALYSIS

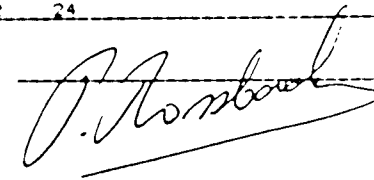
TO: CANAMAX RESOURCES INC.
601-535 THURLOW STREET
VANCOUVER, B.C.
PROJECT No.: 7069 Mt. Hundere

2225 S. SPRINGER AVE
BURNABY, B.C. V5B 3K1
TEL: (604) 299-6910

CERTIFICATE No.: 84333 - 1
INVOICE No.: 4425
DATE ANALYSED: AUGUST 21, 1984
FILE NAME: C1069333

SAMPLE NAME	PPM	PPM	PPM	PPM
	Cu	Ag	Zn	Pb
105A10 84 PNS 763	0.2	74	44	
764	0.4	124	38	
765	1.4	220	278	
766	1.0	112	38	
767	0.2	182	68	
768	0.2	202	38	
769	0.8	272	86	
770	1.0	236	28	
771	0.2	180	24	
772	0.2	88	22	
773	0.2	122	34	
774	0.4	58	16	
775	0.2	76	32	
776	0.4	86	18	
777	1.6	374	184	
778	1.0	220	74	
779	0.6	104	54	
84 PNS 780	0.6	146	28	
STD E	0.2	142	18	
84 PNS 781	1.8	96	42	
782	0.2	82	36	
783	0.2	80	30	
784	0.2	48	28	
785	0.2	108	60	
786	0.4	64	22	
787	0.6	96	30	
788	0.6	80	26	
789	0.2	124	66	
790	1.0	82	24	
791	0.6	132	48	
792	0.2	110	48	
793	0.8	164	52	
794	0.2	76	22	
795	0.4	108	30	
796	0.4	76	36	
797	0.4	124	38	
798	0.4	132	36	
84 PNS 799	0.4	96	22	
STD E	0.2	146	18	
105A10 84 PNS 800	0.4	82	24	

CERTIFIED BY :



ROSSBACHER LABORATORY LTD.

CERTIFICATE OF ANALYSIS

2225 S. SPRINGER AVENUE
 BURNABY, B.C. V5B 3M1
 TEL: (604) 299-6910

CLIENT: CANADIAN PACIFIC
 PROJECT: 7069 Mt. Hender
 ANALYST: J. Rossbach

	Ag	Zn	Pb
105A10 B4 PES 935	1.0	2.0	1.0
105A10 B4 PES 936	1.0	1.2	1.0
105A10 B4 PES 937	1.0	1.6	1.0

J. Rossbach

ROSSBACHER LABORATORY LTD.

CERTIFICATE OF ANALYSIS

2225 S. SPRINGER AVENUE
 BURNABY, B.C. V5B 3M1
 TEL: (604) 299-6910

TO: Canadian Resources Inc.
 201-535 Thurlow Street
 Vancouver B.C.

CERTIFICATE NO.: B4307 - 5
 INVOICE No.: 4359
 DATE ANALYSED: August 15 1984

PROJECT No.: 7069 Mt. Hender

FILE NAME: C1069307

FIX	SAMPLE NAME	PPM		
		Ag	Zn	Pb
S	105A10 B4 PES 935			
S	936			
S	B4 PES 937			
S	938			
S	939			
S	940			
S	941			
S	942			
S	943			
S	944			
S	945			
S	B4 PES 946			
X	STD E			
S	B4 PES 947			
S	948			
S	949			
S	950			
S	951			
S	952			
S	953			
S	954			
S	955			
S	B4 PES 956			
S	957			
S	958			
S	959			
S	960			
S	961			
S	962	0.2	87	16
S	963	0.2	46	12
S	964	0.2	46	12
S	B4 PES 965	0.2	44	10
X	STD E	0.2	152	20
S	B4 PES 966	0.4	46	12
S	967	0.6	98	20
S	968	0.2	94	10
S	969	0.4	84	16
S	970	0.4	70	10
S	971	0.7	86	16
S	972	0.4	94	16

CERTIFIED BY: *J. Rossbach*

JSSBACHER LABORATORY LTD.

2225 S. SPRINGER AVENUE
RURNARY, B.C. V5R 3M1
TEL : (604) 299 - 6910

CERTIFICATE OF ANALYSIS

Canamax Resources, Inc.
601-535 Thurlow Street
Vancouver, B.C.

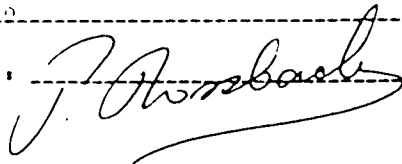
CERTIFICATE No. : 84307 - 6
INVOICE No. : 4509
DATE ANALYSED : August 15 1984

PROJECT No. : 7069 Mt. Hundere

FILE NAME : CX069307

SAMPLE NAME	PPM Au	PPM Zn	PPM Pb
105A10 B4 PES 973 ✓	0.2	46	14
974 ✓	0.2	78	10
B4 PES 975 ✓	0.2	46	10
976 ✓	0.2	58	8
977 ✓	0.4	64	12
978 ✓	0.2	66	12
979 ✓	0.2	222	50
980 ✓	0.2	84	14
981 ✓	0.2	86	16
982 ✓	0.2	50	14
983 ✓	0.2	68	12
B4 PES 984 ✓	0.2	80	8
STD E	0.2	148	18
B4 PES 985 ✓	0.4	92	16
986 ✓	0.2	86	14
987 ✓	0.4	58	14
988 ✓	0.2	118	18
989 ✓	0.2	70	12
990 ✓	0.2	78	16
991 ✓	0.4	242	106
992 ✓	0.4	184	64
993 ✓	0.4	336	64
B4 PES 994 ✓	0.4	500	200
995 ✓	0.2	374	174
996 ✓	0.2	304	116
997 ✓	0.4	216	108
998 ✓	0.2	360	186
999 ✓	0.2	186	60
1000 ✓	0.2	302	128
1001 ✓	0.2	444	176
1002 ✓	0.6	294	42
B4 PES 1003 ✓	0.2	100	20
STD E	0.2	152	18
B4 PES 1004 ✓	0.2	84	12
1005 ✓	0.2	90	12
1006 ✓	0.2	178	10
1007 ✓	0.2	84	14
1008 ✓	0.4	70	14
1009 ✓	0.2	50	10
B4 PES 1010 ✓	0.2	64	10

CERTIFIED BY :



POBBACHER LABORATORY LTD.

2225 S. SPRINGER AVENUE
RURNARY, B.C. V5R 3M1
TEL : (604) 299 - 6910

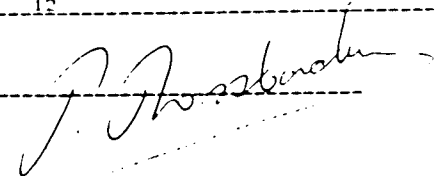
CERTIFICATE OF ANALYSIS

TO : CANAMAX RESOURCES INC.
601-535 THURLOW STREET
VANCOUVER, B.C.
PROJECT No. : 7069 Mt. Hundere

CERTIFICATE No. : 84307 - 9
INVOICE No. : 4425
DATE ANALYSED : AUGUST 24, 1984
FILE NAME : CX069307

PRE FIX	SAMPLE NAME	PPM Cu	PPM Ag	PPM Zn	PPM Pb
S	105A10 B4 PXS1068 ✓		1.2	218	28
S	1069 ✓		0.6	216	28
S	1070 ✓		0.4	122	20
S	1071 ✓		0.8	244	20
S	1072 ✓		0.2	64	14
S	B4 PXS1073 ✓		0.6	146	16
X	STD E		0.2	144	18
S	B4 PXS1074 ✓		0.2	84	8
S	1075 ✓		0.2	78	10
S	1076 ✓		0.4	126	10
S	1077 ✓		0.2	116	24
S	1078 ✓		0.6	138	22
S	1079 ✓		0.8	254	26
S	1080 ✓		0.6	134	16
S	1081 ✓		0.6	108	14
S	1082 ✓		0.4	78	12
S	B4 PXS1083 ✓		0.4	56	12
S	1084 ✓		0.2	106	14
S	1085 ✓		0.2	76	10
S	1086 ✓		0.4	40	8
S	1087 ✓		0.4	114	14
S	1088 ✓		0.8	72	20
S	1089 ✓		0.4	70	14
S	1090 ✓		0.4	152	16
S	1091 ✓		0.4	110	14
S	B4 PXS1092 ✓		0.8	134	20
X	STD E		0.2	158	16
S	B4 PXS1093 ✓		1.0	164	30
S	1094 ✓		0.4	130	16
S	1095 ✓		0.2	92	12
S	1096 ✓		0.4	98	12
S	1097 ✓		0.4	106	14
S	1098 ✓		0.4	122	26
S	1099 ✓		0.4	114	16
S	1100 ✓		0.6	108	16
S	1101 ✓		0.6	113	14
S	B4 PXS1102 ✓		0.2	128	22
S	1103 ✓		0.2	102	12
S	1104 ✓		0.2	100	14
S	1105 ✓		0.2	70	12

CERTIFIED BY :



BOSSBACHER LABORATORY LTD.

CERTIFICATE OF ANALYSIS

2225 S. SPRINGER AVENUE
BURNABY, B.C. V5B 3N1
TEL : (604) 299 - 6910

TO : CANAMAX RESOURCES INC.
601-535 THURLOW STREET
VANCOUVER, B.C.
PROJECT No. : 7069 Mt. Hundere

CERTIFICATE No. : B4333 - 10
INVOICE No. : 4425
DATE ANALYSED: AUGUST 24, 1984
FILE NAME: CX069333

PRE	SAMPLE NAME	PPM Cu	PPM Ag	PPM Zn	PPM Pb
S	105A10 B4 FXS1106 ✓		0.2	104	14
S	B4 FXS1107 ✓		0.2	88	14

CERTIFIED BY :

J. Bossbach

F. BOSSBACHER LABORATORY LTD.

CERTIFICATE OF ANALYSIS

2225 S. SPRINGER AVENUE
BURNABY, B.C. V5B 3N1
TEL : (604) 299 - 6910

TO : Canamax Resources Inc.
601-535 Thurlow Street
Vancouver B.C.

CERTIFICATE No. : B4316 - 10
INVOICE No. : 4421
DATE ANALYSED : August 20, 1984

PROJECT No. : 7069 Mt. Hundere

FILE NAME : CX069316

PRE	SAMPLE NAME	PPM Cu	PPM Ag	PPM Zn	PPM Pb	PPM W	PPM Au
S	105A10 B4 PFS1079 ✓	0.2	114	18			
S	1080 ✓	0.2	132	20			
S	1081 ✓	0.8	174	40			
S	1082 ✓	0.3	128	16			
S	1083 ✓	0.2	158	22			
S	1084 ✓	0.2	132	18			
S	B4 PFS1085 ✓	0.2	184	30			
S	1096 ✓	0.2	124	20			
L	L1087 ✓	0.2	198	50			
S	S1088 ✓	0.2	128	20			
S	1089 ✓	0.2	136	22			
S	1090 ✓	0.2	58	16			
S	1091 ✓	0.2	116	20			
S	1092 ✓	0.2	102	22			
S	1093 ✓	0.2	136	24			
S	B4 PFS1094 ✓	0.2	128	24			
X	STD B	0.8	136	92			
S	B4 PFS1095 ✓	0.2	120	22			
S	1096 ✓	0.4	126	28			
S	1097 ✓	0.2	96	18			
S	1098 ✓	0.2	70	24			
S	1099 ✓	0.2	102	20			
S	1100 ✓	0.2	72	16			
S	1101 ✓	0.2	78	16			
S	1102 ✓	0.2	92	20			
S	1103 ✓	0.2	116	16			
S	B4 PFS1104 ✓	0.2	104	18			
S	1105 ✓	0.2	114	20			
S	1106 ✓	0.2	98	16			
S	1107 ✓	0.2	106	20			
S	1108 ✓	0.2	94	20			
S	1109 ✓	0.2	96	16			
S	1110 ✓	0.2	90	14			
S	1111 ✓	0.2	38	6			
S	1112 ✓	0.2	108	24			
X	B4 PFS1113 ✓	0.2	64	20			
X	STD B	0.8	138	100			
S	B4 PFS1114 ✓	0.4	86	24			
S	1115 ✓	0.2	126	24			
S	1116 ✓	0.2	138	22			

CERTIFIED BY :

J. Bossbach

JSSBACHER LABORATORY LTD.

2225 S. SPRINGER AVENUE
BURNABY, B.C. V5B 3N1
TEL : (604) 299 - 6910

CERTIFICATE OF ANALYSIS

TO : Canadian Resources Inc.
601-535 Thurlow Street
Vancouver B.C.

CERTIFICATE No. : 84316 - 3
INVOICE No. : 4371
DATE ANALYSED : August 20, 1984

PROJECT No. : 7069 Mt. Hundere

FILE NAME : CX069316

E	SAMPLE NAME	PPM Cu	PPM Ag	PPM Zn	PPM Pb	PPM W	PPM Au
X	105A10 84 FBS1117 ✓	0.6	320	220			
	1118 ✓	0.2	264	118			
	1119 ✓	0.2	206	70			
	1120 ✓	0.2	123	14			
	1121 ✓	0.2	396	24			
	1122 ✓	0.4	920	28			
	84 FBS1123 ✓	0.4	332	30			
	1124 ✓	0.2	64	18			
	1125 ✓	0.2	62	8			
	1126 ✓	0.2	142	16			
	1127 ✓	0.2	114	46			
	1128 ✓	0.2	84	16			
	1129 ✓	0.2	138	50			
	1130 ✓	0.2	640	234			
	1131 ✓	0.2	106	18			
	84 FBS1132 ✓	0.2	98	18			
	STD B	0.8	132	96			
	84 FBS1133 ✓	0.6	98	16			
	1134 ✓	0.2	304	276			
	1135 ✓	2.0	4260	240			
	1136 ✓	1.2	3760	160			
	1137 ✓	0.4	1060	48			
	1138 ✓	0.2	148	32			
	1139 ✓	0.2	228	30			
	1140 ✓	0.2	66	26			
	1141 ✓	0.2	64	16			
	84 FBS1142 ✓	0.2	236	114			
	1143 ✓	0.2	98	28			
	1144 ✓	0.6	172	40			
	1145 ✓	0.2	168	50			
	1146 ✓	0.4	660	104			
	1147 ✓	0.8	264	86			
	1148 ✓	1.0	208	52			
	1149 ✓	1.0	560	354			
	1150 ✓	0.4	466	266			
	84 FBS1151 ✓	0.4	270	108			
	STD B	1.0	130	92			
	84 FBS1152 ✓	1.2	720	362			
	1153 ✓	0.2	130	34			
	1154 ✓	0.4	148	70			

CERTIFIED BY :

A. Rossbach

JSSBACHER LABORATORY LTD.

2225 S. SPRINGER AVENUE
BURNABY, B.C. V5B 3N1
TEL : (604) 299 - 6910

CERTIFICATE OF ANALYSIS

TO : Canadian Resources Inc.
601-535 Thurlow Street
Vancouver B.C.

CERTIFICATE No. : 84316 - 4
INVOICE No. : 4371
DATE ANALYSED : August 20, 1984

PROJECT No. : 7069 Mt. Hundere

FILE NAME : CX069316

PRE	SAMPLE NAME	PPM Cu	PPM Ag	PPM Zn	PPM Pb	PPM W	PPM Au
S	105A10 84 FBS1155 ✓	0.8	92	22			
S	1156 ✓	0.4	116	40			
S	1157 ✓	0.8	440	32			
S	1158 ✓	0.2	84	22			
S	1159 ✓	0.2	146	22			
S	1160 ✓	0.2	120	22			
S	84 FBS1161 ✓	0.2	102	18			
S	1162 ✓	0.2	94	18			
S	1163 ✓	0.2	102	18			
S	1164 ✓	0.4	134	19			
S	1165 ✓	0.2	290	15			
S	1166 ✓	0.2	344	24			
S	1167 ✓	0.4	64	14			
S	1168 ✓	0.2	88	16			
S	1169 ✓	0.2	142	14			
S	84 FBS1170 ✓	0.2	136	12			
X	STD B	0.8	128	90			
S	84 FBS1171 ✓	0.6	60	12			
S	1172 ✓	0.6	40	8			
S	1173 ✓	0.4	92	10			
S	1174 ✓	1.2	64	8			
S	1175 ✓	1.0	228	16			
S	1176 ✓	0.4	126	16			
S	1177 ✓	0.2	114	12			
S	1178 ✓	0.2	100	14			
S	1179 ✓	0.2	106	16			
S	84 FBS1180 ✓	0.2	120	16			
S	1181 ✓	0.2	104	16			
S	1182 ✓	0.2	76	14			
S	1183 ✓	0.2	82	15			
S	1184 ✓	1.4	234	56			
S	1185 ✓	1.0	398	172			
S	1186 ✓	1.4	266	64			
S	1187 ✓	0.4	144	58			
S	1188 ✓	2.6	380	146			
S	84 FBS1189 ✓	1.6	416	166			
X	STD E	0.2	128	20			
S	84 FBS1190 ✓	0.6	122	26			
	1191 ✓	0.6	122	26			
	1192 ✓	1.0	292	26			

CERTIFIED BY :

A. Rossbach

JSSBACHER LABORATORY LTD.

CERTIFICATE OF ANALYSIS

Canamas Resources Inc.
601-535 Thurlow Street
Vancouver B.C.

2225 S. SPRINGER AVENUE
BURNABY, B.C. V5B 3N1
TEL : (604) 299 - 6910

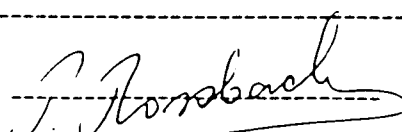
CERTIFICATE No. : 84316 - 5
INVOICE No. : 4371
DATE ANALYSED : August 20, 1984

PROJECT No. : 7069 Mt. Hundera

FILE NAME : CX069316

E	SAMPLE NAME	PPM					
		Cu	Ag	Zn	Pb	W	Au
105A10 84 PBS119 ✓		0.2	100	26			
	1194 ✓	0.2	210	36			
	1195 ✓	0.2	74	20			
	1196 ✓	0.2	112	46			
	1197 ✓	1.0	119	66			
	1198 ✓	0.4	56	20			
84 PBS1199 ✓		1.0	72	20			
	1120 ✓	0.4	76	34			
	1201 ✓	0.4	68	18			
	1202 ✓	0.2	60	16			
	1203 ✓	0.2	74	10			
	1204 ✓	0.4	398	186			
	1205 ✓	1.0	254	104			
	1206 ✓	0.8	330	116			
	1207 ✓	0.6	380	160			
84 PBS1208 ✓		0.2	226	104			
STD E		0.2	146	20			

CERTIFIED BY :



JSSBACHER LABORATORY LTD.

CERTIFICATE OF ANALYSIS

TO : CANAMAX RESOURCES INC.
601-535 THURLOW STREET
VANCOUVER, B.C.

2225 S. SPRINGER AVENUE
BURNABY, B.C. V5B 3N1
TEL : (604) 299 - 6910

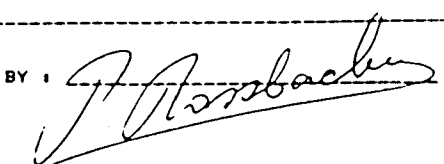
CERTIFICATE No. : 84316 - 5
INVOICE No. : 4359
DATE ANALYSED : AUGUST 20, 1984

PROJECT No. : 7069 Mt. Hundera

FILE NAME : CX069316

PRE	SAMPLE NAME	PPM		
		Ag	Zn	Pb
S	105A10 84 PBS1209 ✓	1.2	208	164
S	1210 ✓	0.6	266	146
S	1211 ✓	0.4	366	222
S	1212 ✓	0.2	268	250
S	1213 ✓	0.4	202	240
S	1214 ✓	1.2	680	1800
S	1215 ✓	0.8	394	236
S	1216 ✓	1.4	3540	1020
S	1217 ✓	9.0	40000	40000
S	84 PBS1218 ✓	5.4	7800	6000
S	1219 ✓	0.4	358	334
S	1220 ✓	0.8	1840	1260
S	1221 ✓	2.4	6000	2180
S	1222 ✓	3.0	5600	940
S	1223 ✓	0.6	342	620
S	1224 ✓	0.8	54	28
S	1225 ✓	0.2	68	26
S	1226 ✓	0.2	88	28
X	84 PBS1227 ✓	0.4	102	32
S	STD B	0.8	124	90
S	84 PBS1228 ✓	0.4	74	22
S	1229 ✓	0.2	132	30
S	1230 ✓	0.4	228	34
S	1231 ✓	0.4	104	38
S	1232 ✓	0.4	202	110
S	1233 ✓	0.2	92	20
S	1234 ✓	0.6	128	30
S	1235 ✓	0.2	92	24
S	1236 ✓	0.2	132	38
S	84 PBS1237 ✓	0.2	106	20
S	1238 ✓	0.2	78	18
S	1239 ✓	0.2	214	38
S	1240 ✓	0.2	126	14
S	1241 ✓	0.2	164	48
S	1242 ✓	0.2	114	72
S	84 PBS1243 ✓	1.4	720	146

CERTIFIED BY :



OBBBACHER LABORATORY LTD.

2225 S. SPRINGER AVENUE
 RURNARY, B.C. V5B 3N1
 TEL : (604) 299 - 6910

CERTIFICATE OF ANALYSIS

TO : CANAMAX RESOURCES INC.
 601-535 THURLOW STREET
 VANCOUVER, B.C.
 PROJECT No.: 7069 Mt. Hendera

CERTIFICATE No.: B4333 - 7
 INVOICE No.: 4425
 DATE ANALYSED: AUGUST 24, 1984
 FILE NAME: CX069333

PRE	SAMPLE NAME	PPM Cu	PPM Ag	PPM Zn	PPM Pb
S	105A10 84 FBS1244 ✓	0.6	142	52	
	1245 ✓	0.6	90	28	
	1246 ✓	0.6	196	60	
	1247 ✓	0.4	104	26	
	1248 ✓	0.2	156	32	
	1249 ✓	0.4	130	30	
	1250 ✓	0.2	104	24	
	1251 ✓	0.2	88	34	
	84 FBS1252 ✓	0.2	74	28	
	1253 ✓	0.4	120	28	
	1254 ✓	0.6	82	18	
	1255 ✓	0.2	112	24	
	1256 ✓	0.4	116	28	
	1257 ✓	0.2	106	18	
	1258 ✓	0.2	80	24	
	1259 ✓	0.2	118	32	
	1260 ✓	0.2	42	24	
	84 FBS1261 ✓	0.4	134	34	
	STD E	0.2	142	20	
	84 FBS1262 ✓	0.2	100	30	
	1263 ✓	0.4	110	90	
	1264 ✓	0.4	720	304	
	1265 ✓	0.4	466	244	
	1266 ✓	0.2	248	148	
	1267 ✓	0.4	200	116	
	1268 ✓	0.4	188	78	
	1269 ✓	0.2	224	116	
	1270 ✓	0.6	304	318	
	84 FBS1271 ✓	1.8	274	440	
	1272 ✓	1.4	304	216	
	1273 ✓	1.2	230	218	
	1274 ✓	0.4	364	232	
	1275 ✓	0.2	112	60	
	1276 ✓	0.4	155	52	
	1277 ✓	0.2	120	54	
	1278 ✓	0.2	282	188	
	1279 ✓	0.2	218	156	
	84 FBS1280 ✓	0.2	122	56	
	STD E	0.2	146	20	
	84 FBS1281 ✓	0.4	412	206	

CERTIFIED BY :

J. Thorsbaker

OBBBACHER LABORATORY LTD.

2225 S. SPRINGER AVENUE
 RURNARY, B.C. V5B 3N1
 TEL : (604) 299 - 6910

CERTIFICATE OF ANALYSIS

TO : CANAMAX RESOURCES INC.
 601-535 THURLOW STREET
 VANCOUVER, B.C.
 PROJECT No.: 7069 Mt. Hendera

CERTIFICATE No.: B4333 - 8
 INVOICE No.: 4425
 DATE ANALYSED: AUGUST 24, 1984
 FILE NAME: CX069333

PRE	SAMPLE NAME	PPM Cu	PPM Ag	PPM Zn	PPM Pb
S	105A10 84 FBS1282 ✓	0.4	154	78	
S	1283 ✓	2.2	2420	1780	
S	1284 ✓	0.6	96	24	
S	1285 ✓	0.2	80	14	
S	1286 ✓	0.2	66	12	
S	1287 ✓	0.4	96	16	
S	84 FBS1288 ✓	0.4	68	18	
S	1289 ✓	0.2	84	10	
S	1290 ✓	0.2	96	12	
S	1291 ✓	0.2	94	12	
S	1292 ✓	0.2	86	12	
S	84 FBS1293 ✓	0.2	106	12	

CERTIFIED BY :

J. Thorsbaker

ROBBACHER LABORATORY LTD.

CERTIFICATE OF ANALYSIS

2025 E. SPRINGER AVENUE
 RICHMOND, B.C. V5B 3M1
 TEL: (604) 299-6910

CLIENT: GRANVILLE RESOURCES LTD.
 ADDRESS: 10000 104 STREET
 VANCOUVER, B.C.
 PROJECT NO.: 7069 HUNTER

CERTIFICATE NO.: 114421
 ANALYSIS DATE: 10/12/84
 DATE ANALYSED: SEPT. 20, 1984
 FILE NAME: 11004421

SAMPLE NAME	PPM	PPM	PPM	PPM	PPM	PPM
	Cu	Co	Zn	Pb	Mn	Pb
105A10 84 P8S1294	0.2	1360	740			
1295	2.0	2000	1000			
1296	2.0	1110	1000			
1297	0.4	332	200			
1298	0.4	28	102			
1299	0.4	144	84			
1300	0.2	560	164			
1301	0.4	430	258			
1302	0.4	240	492			
1303	0.2	152	72			
84 P8S1304	0.4	234	100			

CERTIFIED BY :

J. Robb

ROBBACHER LABORATORY LTD.

CERTIFICATE OF ANALYSIS

2025 E. SPRINGER AVENUE
 RICHMOND, B.C. V5B 3M1
 TEL: (604) 299-6910

CLIENT: GRANVILLE RESOURCES LTD.
 ADDRESS: 10000 104 STREET
 VANCOUVER, B.C.
 PROJECT NO.: 7069 HUNTER

CERTIFICATE NO.: 114421
 ANALYSIS DATE: 10/12/84
 DATE ANALYSED: AUGUST 31, 1984
 FILE NAME: 11004421

PRE FIX	SAMPLE NAME	PPM	PPM	PPM	PPM
		Cu	Pb	Zn	Pb
S	105A10 84 P8S1305	0.8	640	950	
S	1306	1.2	304	128	
S	1307	0.4	330	326	
S	1308	1.0	252	92	
S	1309	2.2	112	58	
S	1310	0.2	116	34	
S	1311	0.2	246	70	
S	1312	0.4	364	240	
S	1313	1.0	520	470	
S	1314	0.6	260	350	
S	1315	1.2	500	192	
S	1316	1.2	156	68	
S	1317	1.2	446	174	
S	1318	0.4	112	28	
S	1319	0.4	106	24	
S	84 P8S1320	0.2	276	98	
X	STD E	0.2	148	10	
S	84 P8S1321	0.4	272	106	
S	1322	0.4	240	72	
S	1323	0.6	246	86	
S	1324	0.6	444	146	
S	84 P8S1325	0.4	180	62	

CERTIFIED BY :

J. Robb

ROBBACHER LABORATORY LTD.

2225 S. SPRINGER AVENUE
BURNABY, B.C. V5B 3M1
TEL : (604) 299 - 6910

CERTIFICATE OF ANALYSIS

TO : CANAMAX RESOURCES INC.
601-535 THURLOW STREET
VANCOUVER, B.C.

CERTIFICATE No. : 84316 - 1
INVOICE No. : 4359
DATE ANALYSED : AUGUST 20, 1984

PROJECT No. : 7069 MT. HUNDERE

FILE NAME : CX069316

SAMPLE NAME	PPM Ag	PPM Zn	PPM Pb
902	0.2	92	22
903	0.2	94	28
904	0.4	80	24
905	0.4	94	30
906	0.2	70	18
84 PSS 907	0.6	98	28
908	0.4	104	42
909	0.2	50	20
910	0.8	162	58
911	0.6	94	38
912	0.2	80	30
913	0.4	92	24
914	1.4	64	20
915	0.2	74	16
84 PSS 916	0.6	92	20
SID R	1.0	138	88
84 PSS 917	0.2	82	20
918	0.2	92	34
919	0.2	106	44
920	0.2	86	24
921	0.6	62	28
922	0.4	46	18
923	0.2	76	16
924	0.4	108	34
925	0.4	126	40
84 PSS 926	0.4	86	24
927	0.2	84	26
928	0.2	164	60
929	0.6	134	56
930	0.2	54	36
931	0.2	200	104
932	0.2	102	20
933	0.2	128	18
934	0.2	70	10
84 PSS 935	0.2	48	8
SID R	0.8	130	94

CERTIFIED BY :

J. Rossbach

ROBBACHER LABORATORY LTD.

2225 S. SPRINGER AVENUE
BURNABY, B.C. V5B 3M1
TEL : (604) 299 - 6910

CERTIFICATE OF ANALYSIS

TO : CANAMAX RESOURCES INC.
601-535 THURLOW STREET
VANCOUVER, B.C.

CERTIFICATE No. : 84316 - 2
INVOICE No. : 4359
DATE ANALYSED : AUGUST 20, 1984

PROJECT No. : 7069 MT. HUNDERE

FILE NAME : CX069316

PRE	SAMPLE NAME	PPM Ag	PPM Zn	PPM Pb
S	105A10 84 PSS 936	0.2	102	10
S	937	0.2	166	12
S	938	0.2	240	18
S	939	0.4	212	16
S	940	0.6	172	14
S	941	0.8	36	8
S	942	0.6	66	10
S	943	0.2	122	18
S	944	0.2	126	24
S	84 PSS 945	0.2	144	24
S	946	0.2	112	14
S	947	0.2	110	18
S	948	0.2	122	16
S	949	0.2	106	14
S	950	0.2	112	16
S	951	0.2	118	12
S	952	0.2	122	10
S	953	0.6	94	14
S	84 PSS 954	0.4	104	10
X	SID C	0.6	112	72
S	84 PSS 955	0.2	86	10
S	956	0.4	88	12
S	957	0.4	136	14
S	958	0.2	182	16
S	959	0.4	30	4
S	960	0.2	46	10
S	961	0.2	114	12
S	962	0.6	136	14
S	963	0.4	114	14
S	84 PSS 964	0.4	114	12
S	965	0.2	96	8
S	966	0.4	140	16
S	967	0.2	112	10
S	968	0.2	86	10
S	969	0.4	48	10
S	970	0.2	74	10
S	971	0.6	94	12
S	972	0.8	106	22
S	84 PSS 973	1.6	330	72
X	SID C	0.8	120	78

CERTIFIED BY :

J. Rossbach

JBBBACHER LABORATORY LTD.

2225 S. SPRINGER AVENUE
BURNABY, B.C. V5B 3M1
TEL : (604) 299 - 6910

CERTIFICATE OF ANALYSIS

TO : CANAMAX RESOURCES INC.
601-535 THURLOW STREET
VANCOUVER, B.C.

CERTIFICATE No. : B4316 - 3
INVOICE No. : 4359
DATE ANALYSED : AUGUST 20, 1984

PROJECT No. : 7069 MI. MUNDERE

FILE NAME : C1069316

SAMPLE NAME	PPM		
	Ag	Zn	Pb
105A10 B4 PSS 974	1.0	322	70
975	1.4	472	234
976	2.2	680	168
977	0.8	332	154
978	2.8	310	108
979	1.6	292	78
980	0.4	180	40
981	0.2	186	50
982	0.2	110	30
B4 PSS 983	0.2	122	46
984	0.8	1080	462
985	0.2	112	24
986	0.2	90	30
987	0.2	112	42
988	0.2	84	18
989	0.2	76	18
990	0.2	112	24
991	0.2	136	28
B4 FSS 992	0.2	102	10
SID 0	4.2	500	104
B4 FSS 993	0.2	66	8
994	0.2	148	14
995	0.4	48	8
996	0.4	76	14
997	0.2	40	12
998	0.2	22	8
999	0.2	86	12
1000	0.2	42	10
1001	0.2	152	18
B4 PSS 1002	0.2	84	14
1003	0.2	98	14
1004	0.2	78	16
1005	0.2	150	22
1006	0.2	110	12
1007	0.2	108	12
1008	0.2	102	20
1009	0.2	100	22
1010	0.2	136	20
B4 PSS 1011	0.2	108	22
SID 0	4.0	500	110

CERTIFIED BY :

J. Rossbach

JBBBACHER LABORATORY LTD.

2225 S. SPRINGER AVENUE
BURNABY, B.C. V5B 3M1
TEL : (604) 299 - 6910

CERTIFICATE OF ANALYSIS

TO : CANAMAX RESOURCES INC.
601-535 THURLOW STREET
VANCOUVER, B.C.

CERTIFICATE No. : B4316 - 4
INVOICE No. : 4359
DATE ANALYSED : AUGUST 20, 1984

PROJECT No. : 7069 MI. MUNDERE

FILE NAME : C1069316

SAMPLE NAME	PPM		
	Ag	Zn	Pb
S 150A10 B4 PSS 1012	0.8	82	30
S 1013	0.8	124	26
S 1014	0.6	212	71
S 1015	0.4	388	364
S 1016	0.2	136	42
S 1017	0.4	106	32
S 1018	0.6	346	62
S 1019	0.2	140	50
S 1020	0.2	102	14
S 1021	0.2	84	12
S 1022	0.2	84	12
S 1023	0.2	110	28
S 1024	0.2	40	8
S 1025	0.4	82	16
S 1026	0.2	92	22
S 1027	0.4	70	24
S 1028	0.4	76	18
S 1029	0.2	102	14
S B4 PSS 1030	0.4	128	20
X SID E	0.2	132	16
S B4 PSS 1031	1.8	72	24
S 1032	1.6	124	14
S 1033	1.0	56	10
S 1034	1.0	98	10
S 1035	0.8	64	10
S 1036	0.6	82	8
S 1037	0.6	38	6
S 1038	0.8	34	6
S 1039	1.0	40	10
S B4 PSS 1040	1.0	90	8
S 1041	1.6	74	8
S 1042	0.6	118	10
S 1043	1.0	128	6
S 1044	0.4	170	18
S 1045	0.6	84	10
S 1046	0.2	86	10
S 1047	0.2	92	12
S 1048	0.4	84	14
S B4 PSS 1049	0.2	54	10
S SID E	0.2	128	16

CERTIFIED BY :

J. Rossbach

ROBBACHER LABORATORY LTD.

CERTIFICATE OF ANALYSIS

2225 S. SPRINGER AVENUE
 BURNABY, B.C. V5B 3N1
 TEL : (604) 299 - 6910

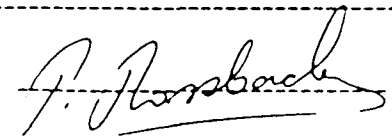
Client: Canam Resources Inc.
 601-525 Thurlow Street
 Vancouver, B.C.

CERTIFICATE No. : R4316 - 1
 INVOICE No. : 4371
 DATE ANALYSED : August 20, 1984

CLIENT No. : 7069 Mt. Hender

FILE NAME : 0X069316

PRE	SAMPLE NAME	PPM Cu	PPM Ag	PPM Zn	PPM Pb	PPM W	PPM Au
S	105A10 B4 FSS10502	0.2	80	22			
S	1051	0.2	88	18			
S	1052	0.2	210	42			
S	1053	0.4	140	24			
S	1054	0.4	190	28			
S	1055	0.4	118	26			
S	1056	0.4	92	18			
S	1057	1.6	138	24			
S	1058	0.4	358	60			
S	B4 FSS1059	1.8	94	20			
S	1060	0.2	40	16			
S	1061	0.2	100	24			
S	1062	0.2	118	16			
S	1063	0.2	122	26			
S	1064	0.2	55	14			
S	1065	0.2	70	16			
S	1066	0.2	92	16			
S	1067	0.2	76	18			
S	B4 FSS1066	0.2	132	22			
S	STD R	0.8	128	92			
S	B4 FSS1069	0.2	68	12			
S	1070	0.2	72	10			
S	B4 FSS1071	0.2	86	14			

CERTIFIED BY : 

ROBBACHER LABORATORY LTD.

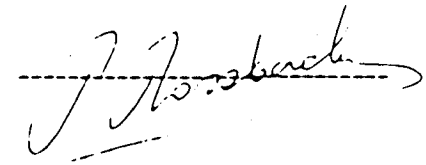
CERTIFICATE OF ANALYSIS

2225 S. SPRINGER AVENUE
 BURNABY, B.C. V5B 3N1
 TEL : (604) 299 - 6910

TO : CANAM RESOURCES INC.
 601-525 THURLOW STREET
 VANCOUVER, B.C.
 PROJECT No. : 7069 Mt. Hender

CERTIFICATE No. : R4316 - 1
 INVOICE No. : 4425
 DATE ANALYSED : AUGUST 24, 1984
 FILE NAME : 0X069316

PRE	SAMPLE NAME	PPM Cu	PPM Ag	PPM Zn	PPM Pb
S	105A10 B4 FSS1072	0.4	116	12	
S	1073	0.4	128	8	
S	1074	0.4	86	10	
S	B4 FSS1075	0.6	98	12	
S	1076	0.6	108	8	
S	1077	2.8	160	8	
S	1078	0.4	108	8	
S	1079	0.2	58	4	
S	1080	0.4	80	6	
S	1081	1.0	180	8	
S	1082	0.8	214	6	
S	1083	0.4	142	8	
S	B4 FSS1084	0.4	150	10	
X	STD D	4.2	500	100	
S	B4 FSS1085	0.6	94	18	
S	1086	0.2	28	8	
S	1087	0.4	72	12	
S	1088	0.4	96	18	
S	1089	0.4	90	10	
S	1090	0.4	60	10	
S	1091	0.4	84	12	
S	1092	0.4	98	28	
S	1093	0.4	142	64	
S	B4 FSS1094	0.4	140	62	
S	1095	0.4	346	108	
S	1096	0.4	86	44	
S	1097	0.6	134	52	
S	1098	0.2	88	50	
S	1099	0.2	98	48	
S	1100	0.4	158	72	
S	1101	0.6	156	152	
S	1102	0.6	170	164	
S	B4 FSS1103	1.8	800	486	
X	STD R	1.0	148	98	
S	B4 FSS1104	1.8	2040	1460	
S	1105	1.4	2740	660	
S	1106	3.2	6200	2040	
S	1107	2.8	2920	1760	
S	1108	2.4	6200	1840	
S	1109	2.4	7000	1640	

CERTIFIED BY : 

POBBACHER LABORATORY LTD.

CERTIFICATE OF ANALYSIS

2225 S. SPRINGER AVENUE
 BURNABY, B.C. V5B 3N1
 TEL : (604) 299 - 6910

TO : PANAMA RESOURCES INC.
 601-535 THURLOW STREET
 VANCOUVER, B.C.
 OBJECT No.: 7069 Mt. Henderson

CERTIFICATE No.: B4333 - 4
 INVOICE No.: 4425
 DATE ANALYSED: AUGUST 24, 1984
 FILE NAME: CX069333

PRE	SAMPLE NAME	PPM Cu	PPM Ag	PPM Zn	PPM Pb
S	105A10 84 PSS1110	0.8	600	406	
S	1111	0.8	1220	1160	
S	1112	0.6	64	16	
S	84 PSS1113	0.8	60	12	
S	1114	0.2	52	20	
S	1115	1.0	42	22	
S	1116	0.6	94	48	
S	1117	0.8	98	30	
S	1118	0.8	108	52	
S	1119	0.8	140	26	
S	1120	0.2	40	18	
S	1121	0.6	52	24	
S	84 PSS1122	1.0	170	50	
S	STD R	1.0	140	100	
S	84 PSS1123	0.6	164	66	
S	1124	0.4	56	54	
S	1125	1.0	108	66	
S	1126	0.4	316	170	
S	1127	0.8	540	192	
S	1128	0.6	282	158	
S	1129	0.4	132	56	
S	1130	0.6	34	36	
S	1131	0.6	54	28	
S	84 PSS1132	0.4	138	38	
S	1133	0.6	168	76	
S	1134	0.6	560	368	
S	1135	1.6	1100	1280	
S	1136	1.0	2480	1260	
S	1137	1.2	920	820	
S	1138	2.8	1040	850	
S	1139	0.6	600	420	
S	1140	0.4	560	258	
S	84 PSS1141	1.6	1740	1280	
S	STD R	0.8	128	94	
S	84 PSS1142	0.2	150	76	
S	1143	0.4	132	44	
S	1144	0.4	42	20	
S	1145	0.2	78	32	
S	1146	0.4	72	34	
S	1147	0.4	52	24	

CERTIFIED BY :

J. Woodbridge

POBBACHER LABORATORY LTD.

CERTIFICATE OF ANALYSIS

2225 S. SPRINGER AVE
 BURNABY, B.C. V5B 3N1
 TEL : (604) 299 - 6910

TO : PANAMA RESOURCES INC.
 601-535 THURLOW STREET
 VANCOUVER, B.C.
 PROJECT No.: 7069 Mt. Henderson

CERTIFICATE No.: B4333 - 5
 INVOICE No.: 4425
 DATE ANALYSED: AUGUST 24, 1984
 FILE NAME: CX069333

PRE	SAMPLE NAME	PPM Cu	PPM Ag	PPM Zn	PPM Pb
S	105A10 84 PSS1148	0.6	262	458	
S	1149	1.6	152	100	
S	1150	0.6	144	102	
S	84 PSS1151	0.4	126	86	
S	1152	0.4	320	288	
S	1153	0.6	286	310	
S	1154	0.2	378	74	
S	1155	0.4	160	60	
S	1156	0.4	86	54	
S	1157	0.4	96	54	
S	1158	0.2	220	140	
S	1159	0.2	188	42	
S	84 PSS1160	0.4	78	16	
S	STD R	1.0	134	96	
S	84 PSS1161	0.2	96	22	
S	1162	0.2	140	60	
S	1163	0.2	178	52	
S	1164	0.4	198	60	
S	1165	0.2	52	8	
S	1166	0.2	120	18	
S	1167	0.2	100	24	
S	1168	0.2	162	42	
S	1169	0.4	224	86	
S	84 PSS1170	0.4	124	22	
S	1171	0.8	264	84	
S	1172	0.6	140	44	
S	1173	0.4	142	36	
S	1174	0.4	130	18	
S	1175	0.6	144	52	
S	1176	0.2	42	14	
S	1177	0.4	104	20	
S	1178	0.2	44	14	
S	84 PSS1179	0.2	150	34	
S	STD D	4.0	500	100	
S	84 PSS1180	0.4	116	40	
S	1181	0.6	130	58	
S	1182	0.2	110	42	
S	1183	0.2	170	94	
S	1184	0.2	112	44	
S	1185	0.2	180	126	

CERTIFIED BY :

J. Woodbridge

ROBBBACHER LABORATORY LTD.

CERTIFICATE OF ANALYSIS

2225 S. SPRINGER AVENUE
 BURNABY, B.C. V5B 3M1
 TEL: (604) 299-6910

TO: CANAMAX RESOURCES INC.
 601-535 THURLOW STREET
 VANCOUVER, B.C.
 OBJECT No.: 7069 Mt. Hundere

CERTIFICATE No.: B4333 - 6
 INVOICE No.: 4425
 DATE ANALYSED: AUGUST 24, 1984
 FILE NAME: CX069333

SAMPLE NAME	PPM Cu	PPM Ag	PPM Zn	PPM Pb
105A10 B4 PSS1186	0.2	46	16	
1187	0.4	76	26	
1188	0.2	144	14	
B4 PSS1189	0.2	158	34	
1190	0.6	256	36	
1191	1.2	176	132	
1192	0.4	98	32	
1193	0.6	84	36	
1194	0.6	90	124	
1195	0.4	170	116	
1196	0.4	122	58	
1197	0.6	202	84	
B4 PSS1198	0.2	102	36	
STD D	4.0	500	102	
B4 PSS1199	0.4	94	38	

CERTIFIED BY:

J. Roszbach

ROBBBACHER LABORATORY LTD.

CERTIFICATE OF ANALYSIS

2225 S. SPRINGER AVENUE
 BURNABY, B.C. V5B 3M1
 TEL: (604) 299-6910

TO: CANAMAX RESOURCES INC.
 601-535 THURLOW STREET
 VANCOUVER, B.C.
 PROJECT No.: 7069 Mt. Hundere

CERTIFICATE No.: B4352 - 1
 INVOICE No.: 4374
 DATE ANALYSED: AUGUST 31, 1984
 FILE NAME: CX069352

PRE EIX	SAMPLE NAME	PPM Cu	PPM Ag	PPM Zn	PPM Pb
S	105A10 B4 PSS1200	0.2	124	40	
S	1201	0.2	152	72	
S	1202	0.2	140	80	
S	1203	0.2	118	32	
S	1204	0.2	78	18	
S	1205	0.2	310	30	
S	1206	0.2	128	38	
S	1207	0.2	104	42	
S	1208	0.2	96	42	
S	1209	0.2	74	18	
S	1210	0.2	92	18	
S	1211	0.2	94	28	
S	1212	0.2	82	22	
S	1213	0.2	74	24	
S	1214	0.2	92	18	
S	1215	0.2	114	24	
S	1216	0.2	70	12	
S	1217	0.6	100	28	
S	B4 PSS1218	1.0	110	42	
X	STD E	0.2	142	20	
S	B4 PSS1219	0.2	60	8	
S	1220	1.0	88	24	
S	1221	0.2	114	48	
S	1222	0.2	68	26	
S	1223	0.2	140	68	
S	1224	0.2	154	44	
S	1225	0.2	132	60	
S	1226	0.2	144	44	
S	1227	0.2	144	42	
S	1228	0.2	60	20	
S	1229	0.2	70	24	
S	1230	0.4	102	60	
S	1231	0.8	180	48	
S	1232	0.4	110	54	
S	1233	0.8	76	42	
S	1234	0.4	64	42	
S	1235	0.4	40	26	
S	1236	0.6	114	42	
S	B4 PSS1237	0.4	76	42	
X	STD E	0.2	140	20	

CERTIFIED BY:

J. Roszbach

ROBBACHER LABORATORY LTD.

2225 S. SPRINGER AVENUE
 BURNABY, B.C. V5B 3M1
 TEL: (604) 299-6910

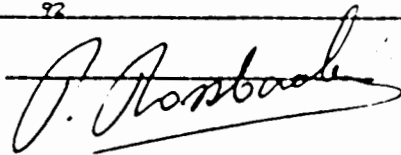
CERTIFICATE OF ANALYSIS

TO: CANAMAX RESOURCES INC.
 601-535 THURLOW STREET
 VANCOUVER, B.C.
 PROJECT No.: 7069 Mt. Hundere

CERTIFICATE No.: B4352 - 2
 INVOICE No.: 4379
 DATE ANALYSED: AUGUST 31, 1984
 FILE NAME: CX069352

SAMPLE NAME	PPM Cu	PPM Ag	PPM Zn	PPM Pb
105A10 B4 PSS1238	1.2	166	104	
1239	0.4	58	20	
1240	0.4	86	40	
1241	0.4	60	30	
1242	1.2	264	102	
1243	1.0	86	38	
B4 PSS1244	0.4	144	22	
1245	0.8	102	24	
1246	0.4	48	22	
1247	0.4	90	30	
1248	0.2	58	22	
1249	0.2	112	54	
1250	0.2	110	16	
1251	0.2	84	14	
1252	0.2	72	12	
1253	0.2	106	16	
1254	0.2	88	20	
1255	0.2	70	18	
B4 PSS1256	0.4	90	20	
STD B	1.0	140	98	
B4 PSS1257	0.4	130	56	
1258	0.6	90	18	
1259	0.4	48	12	
1260	1.2	68	28	
1261	0.6	106	32	
1262	0.6	64	22	
1263	0.4	44	12	
1264	0.8	114	48	
1265	0.4	80	28	
1266	0.6	114	34	
1267	0.6	68	28	
1268	0.4	58	22	
1269	0.6	98	30	
1270	0.4	76	10	
1271	0.4	96	8	
1272	0.6	58	12	
1273	0.2	68	14	
1274	0.4	152	52	
B4 PSS1275	0.6	108	20	
STD B	1.0	134	92	

CERTIFIED BY:



ROBBACHER LABORATORY LTD.

2225 S. SPRINGER AVENUE
 BURNABY, B.C. V5B 3M1
 TEL: (604) 299-6910

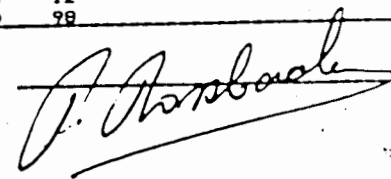
CERTIFICATE OF ANALYSIS

TO: CANAMAX RESOURCES INC.
 601-535 THURLOW STREET
 VANCOUVER, B.C.
 PROJECT No.: 7069 Mt. Hundere

CERTIFICATE No.: B4352 - 3
 INVOICE No.: 4379
 DATE ANALYSED: AUGUST 31, 1984
 FILE NAME: CX069352

PRE FIX	SAMPLE NAME	PPM Cu	PPM Ag	PPM Zn	PPM Pb
S	105A10 B4 PSS1276	0.2	128	28	
S	1277	0.2	76	10	
S	1278	0.2	96	20	
S	1279	0.2	44	12	
S	1280	0.2	18	6	
S	1281	0.2	22	10	
S	1282	0.6	136	76	
S	1283	0.2	158	134	
S	1284	0.2	78	16	
S	1285	0.2	92	30	
S	1286	0.4	112	22	
S	1287	0.2	58	22	
S	1288	0.2	104	38	
S	1289	0.6	148	24	
S	1290	0.8	244	62	
S	1291	0.2	124	42	
S	1292	0.4	226	38	
S	1293	0.6	264	26	
S	B4 PSS1294	0.4	86	28	
X	STD D	1.2	462	98	
S	B4 PSS1295	0.2	58	14	
S	1296	0.2	152	16	
S	1297	0.2	72	18	
S	1298	0.4	50	16	
S	1299	0.4	288	304	
S	1300	0.2	72	24	
S	1301	1.0	136	30	
S	1302	0.4	122	44	
S	1303	0.4	42	18	
S	1304	0.4	118	26	
S	1305	0.2	50	18	
S	1306	0.4	70	20	
S	1307	0.4	70	20	
S	1308	0.2	68	20	
S	1309	0.2	70	16	
S	1310	0.2	90	14	
S	1311	0.2	80	12	
S	1312	0.2	78	14	
S	B4 PSS1313	0.2	46	12	
X	STD D	1.2	300	98	

CERTIFIED BY:



ROBBACHER LABORATORY LTD.

2225 S. SPRINGER AVENUE
 BURNABY, B.C. V5B 3M1
 TEL : (604) 299 - 6910

CERTIFICATE OF ANALYSIS

TO : CANAMAX RESOURCES INC.
 601-535 THURLOW STREET
 VANCOUVER, B.C.

CERTIFICATE No. : B4352 - 4
 INVOICE No. : 4379
 DATE ANALYSED : AUGUST 31, 1984
 FILE NAME : CX069352

PROJECT No. : 7069 Mt. Hundere

PRE	SAMPLE NAME	PPM Cu	PPM Ag	PPM Zn	PPM Pb
S	105A10 B4 PSS1314	0.2	86	24	
	1315.	0.2	88	20	
	1316	0.2	36	12	
	1317	0.2	100	16	
	1318	0.2	112	20	
	1319	0.2	102	16	
	1320	1.0	1160	40	
	1321	1.4	2140	80	
	1322	0.4	462	28	
	1323	0.8	620	62	
	1324	0.4	254	32	
	1325	0.4	124	30	
	1326	8.4	9400	260	
	1327	0.2	268	24	
	1328	0.2	124	18	
	1329	0.2	122	20	
	1330	0.4	214	30	
	1331	0.2	146	44	
	B4 PSS1332	0.2	442	34	
	STD E	0.2	152	20	
	B4 PSS1333	0.2	224	30	
	1334	0.6	230	34	
	1335	0.6	1140	770	
	1336	0.4	1180	492	
	1337	0.2	78	66	
	1338	3.8	10400	280	
	1339	0.2	152	34	
	1340	2.2	46	18	
	1341	0.2	168	18	
	1342	0.2	88	20	
	1343	0.2	80	14	
	1344	0.2	80	112	
	1345	0.4	66	40	
	1346	0.2	48	10	
	1347	0.2	28	8	
	1348	0.2	34	14	
	1349	0.2	70	12	
	1350	0.2	72	10	
	B4 PSS1351	0.2	52	12	
	STD E	0.2	138	18	

CERTIFIED BY :

J. Rossbach

ROBBACHER LABORATORY LTD.

2225 S. SPRINGER AVENUE
 BURNABY, B.C. V5B 3M1
 TEL : (604) 299 - 6910

CERTIFICATE OF ANALYSIS

TO : CANAMAX RESOURCES INC.
 601-535 THURLOW STREET
 VANCOUVER, B.C.

CERTIFICATE No. : B4352 - 5
 INVOICE No. : 4379
 DATE ANALYSED : AUGUST 31, 1984
 FILE NAME : CX069352

PROJECT No. : 7069 Mt. Hundere

PRE	SAMPLE NAME	PPM Cu	PPM Ag	PPM Zn	PPM Pb
S	105A10 B4 PSS1352	0.2	26	22	
S	1353.	0.6	172	68	
S	1354	0.4	196	110	
S	1355	0.2	404	90	
S	1356	0.2	610	70	
S	1357	7.2	12800	18500	
S	1358	1.0	466	252	
S	1359	0.8	428	280	
S	1360	1.2	1740	1460	
S	1361	2.0	2440	274	
S	1362	1.2	368	164	
S	1363	0.6	186	64	
S	1364	0.2	230	116	
S	1365	0.2	388	86	
S	1366	0.2	186	56	
S	1367	0.4	620	68	
S	1368	0.2	90	18	
S	1369	0.2	48	24	
S	B4 PSS1370	0.4	90	46	
X	STD D	4.0	488	100	
S	B4 PSS1371	0.2	162	48	
S	1372	1.0	410	52	
S	1373	0.4	296	32	
S	1374	0.2	438	50	
S	1375	0.2	218	34	
S	1376	0.6	60	14	
S	1377	0.4	142	20	
S	1378	0.6	240	24	
S	1379	0.6	190	32	
S	1380	0.4	186	28	
S	1381	0.4	188	30	
S	1382	0.6	200	134	
S	1383	0.8	560	414	
S	1384	2.8	700	392	
S	1385	0.8	900	106	
S	1386	0.6	1180	78	
S	1387	1.2	1020	36	
S	1388	1.0	780	26	
S	B4 PSS1389	0.2	332	16	
X	STD D	4.0	472	100	

CERTIFIED BY :

J. Rossbach

OBBBACHER LABORATORY LTD.

2225 S. SPRINGER AVENUE
 BURNABY, B.C. V5B 3M1
 TEL : (604) 299 - 6910

CERTIFICATE OF ANALYSIS

CLIENT: CANAMAX RESOURCES INC.
 601-535 THURLLOW STREET
 VANCOUVER, B.C.
 PROJECT No. : 7069 Mt. Hundere

CERTIFICATE No. : 84752 - 6
 INVOICE No. : 4379
 DATE ANALYSED : AUGUST 31, 1984
 FILE NAME : CX069352

PRE	SAMPLE NAME	PPM Cu	PPM Ag	PPM Zn	PPM Pb
S	105A10 B4 PSS1390		0.6	1120	48
S	1391		0.4	424	108
S	1392		0.4	146	20
S	1393		0.4	250	30
S	1394		0.2	214	38
S	1395		0.2	264	44
S	1396		0.2	110	20
S	1397		0.2	206	94
S	1398		0.2	98	48
S	1399		0.2	388	206
S	1400		0.2	386	190
S	1401		0.2	216	146
S	1402		1.0	480	170
S	1403		0.8	780	254
S	1404		22.2	29800	27200
S	1405		0.6	640	208
S	1406		5.4	500	270
S	1407		0.2	120	44
S	84 PSS1408		0.2	132	44
S	SID		4.4	488	102
S	84 PSS1409		0.2	92	18
S	1310		0.4	144	16
S	1411		0.2	82	16
S	1412		0.4	92	34
S	1413		0.4	70	82
S	1414		0.2	54	30
S	1415		1.6	486	600
S	1416		0.4	106	52
S	1417		0.2	72	18
S	1418		0.2	54	18
S	1419		0.4	54	70
S	1420		0.4	104	62
S	1421		0.4	42	28
S	1422		0.4	168	90
S	1423		1.8	800	720
S	1424		0.4	290	188
S	1425		0.2	454	430
S	1426		0.4	226	102
S	84 PSS1427		0.2	226	134
S	SID		4.4	496	100

CERTIFIED BY :

J. Rossbach

ROBBBACHER LABORATORY LTD.

2225 S. SPRINGER AVENUE
 BURNABY, B.C. V5B 3M1
 TEL : (604) 299 - 6910

CERTIFICATE OF ANALYSIS

CLIENT: CANAMAX RESOURCES INC.
 601-535 THURLLOW STREET
 VANCOUVER, B.C.
 PROJECT No. : 7069 Mt. Hundere

CERTIFICATE No. : 84752 - 7
 INVOICE No. : 4379
 DATE ANALYSED : AUGUST 31, 1984
 FILE NAME : CX069352

PRE	SAMPLE NAME	PPM Cu	PPM Ag	PPM Zn	PPM Pb
S	105A10 B4 PSS1428		0.4	246	136
S	1429		0.2	128	68
S	1430		0.6	286	164
S	1431		0.4	120	68
S	1432		0.4	122	42
S	1433		0.2	90	18
S	1434		0.2	82	16
S	1435		0.2	84	12
S	1436		0.2	174	80
S	1437		0.6	100	30
S	1438		0.4	94	34
S	1439		0.4	86	30
S	1440		0.2	84	22
S	1441		0.2	80	16
S	1442		0.2	82	10
S	1443		0.2	96	26
S	1444		0.2	94	38
S	1445		0.4	108	42
S	84 PSB1446		0.6	110	42
S	SID		0.2	142	20
S	84 PSS1447		0.4	96	42
S	1448		0.8	68	22
S	1449		0.2	104	36
S	1450		0.2	48	20
S	1451		0.4	84	14
S	1452		0.4	148	44
S	1453		0.2	64	16
S	1454		0.2	26	12
S	1455		0.4	44	12
S	1456		0.2	44	16
S	1457		0.2	174	90
S	1458		0.6	102	20
S	1459		0.6	78	20
S	1460		0.2	100	20
S	1461		0.2	106	24
S	1462		0.4	88	18
S	1463		0.4	120	28
S	1464		0.2	108	28
S	84 PSS1465		0.2	76	8
S	SID		0.2	140	18

CERTIFIED BY :

J. Rossbach

ROBBACHER LABORATORY LTD.

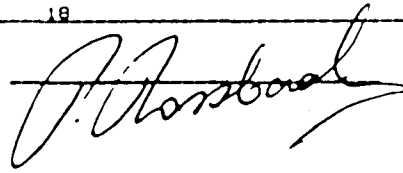
2225 S. SPRINGER AVENUE
BURNABY, B.C. V5B 3M1
TEL : (604) 299 - 8910

CERTIFICATE OF ANALYSIS

TO : CANAMAX RESOURCES INC.
601-535 THURLOW STREET
VANCOUVER, B.C.
PROJECT No. : 7069 Mt. Hundere

CERTIFICATE No. : B4352 - 1
INVOICE No. : 4379
DATE ANALYSED : AUGUST 31, 1984
FILE NAME : CX069352

SAMPLE NAME	PPM Cu	PPM Ag	PPM Zn	PPM Pb
105A10 B4 PSS1466	0.4	72	16	
1467	0.2	104	20	
1468	0.2	88	14	
1469	0.4	54	12	
1470	0.4	82	12	
1471	0.4	92	18	
1472	0.2	84	26	
1473	0.2	86	14	
1474	0.2	92	16	
1475	0.2	60	16	
1476	0.4	88	18	
1477	0.2	66	16	
1478	0.2	90	12	
1479	0.2	104	18	
1480	0.2	62	12	
1481	0.4	260	54	
1482	0.6	114	120	
1483	0.6	214	188	
B4 PSS1484	0.2	68	52	
STD E	0.2	144	18	
B4 PSS1485	0.4	40	36	
1486	0.4	160	46	
1487	0.2	74	32	
1488	0.4	100	36	
1489	0.2	104	38	
1490	0.2	110	60	
1491	0.4	98	38	
1492	0.4	124	38	
1493	0.2	88	86	
1494	0.4	268	268	
1495	0.2	110	44	
1496	0.2	110	82	
1497	0.4	234	1250	
1498	0.4	88	58	
1499	0.2	78	24	
1500	0.2	136	50	
1501	0.6	98	32	
1502	0.4	88	36	
B4 PSS1503	0.2	70	30	
STD E	0.2	148	18	

CERTIFIED BY : 

ROBBACHER LABORATORY LTD.

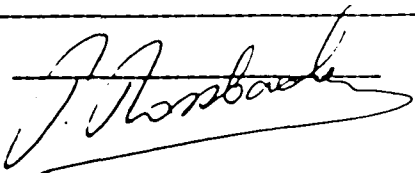
2225 S. SPRINGER AVENUE
BURNABY, B.C. V5B 3M1
TEL : (604) 299 - 8910

CERTIFICATE OF ANALYSIS

TO : CANAMAX RESOURCES INC.
601-535 THURLOW STREET
VANCOUVER, B.C.
PROJECT No. : 7069 Mt. Hundere

CERTIFICATE No. : B4352 - 1
INVOICE No. : 4379
DATE ANALYSED : AUGUST 31, 1984
FILE NAME : CX069352

SAMPLE NAME	PPM Cu	PPM Ag	PPM Zn	PPM Pb
S 105A10 B4 PSS1504	0.2	70	22	

CERTIFIED BY : 

Rossbacher Laboratory

GEOCHEMICAL ANALYSTS & ASSAYERS

2225 S SPRINGER AVE.,
BURNABY, B. C.
CANADA
TELEPHONE: 299-6910
AREA CODE: 604

Jan. 1982

(1)

GEOCHEMICAL ANALYTICAL METHODS CURRENTLY IN USE AT ROSSBACHER LABORATORY LTD.

A. SAMPLE PREPARATION

1. *Geochem. Soil and Silt:* Samples are dried, and sifted to minus 80 Mesh, through stainless steel, or nylon screens.
2. *Geochem. Rock:* Samples are dried, crushed to minus $\frac{1}{4}$ inch, split, and pulverized to minus 100 mesh.

B. METHODS OF ANALYSIS

1. *Multi-element:* (Mo, Cu, Ni, Co, Mn, Fe, Ag, Zn, Pb, Cd):
0.5 Gram sample is digested for four hours with a 15:85 mixture of Nitric-Perchloric acid.
The resulting extract is analyzed by Atomic Absorption spectroscopy, using Background Correction where appropriate.
2. *Antimony:* 0.50 Gram sample is fused with Ammonium Iodide and dissolved.
The resulting solution is extracted into TOPO/MIBK and analyzed by Atomic Absorption spectroscopy.
3. *Arsenic:* 0.25 Gram sample is digested with Nitric-Perchloric acid.
Arsenic from the solution is converted to arsine, which in turn reacts with silver D.D.C. The resulting solution is analyzed by colorimetry.
4. *Barium:* 0.50 Gram sample is repeatedly digested with HClO_4 - HNO_3 and HF.
The solution is analyzed by Atomic Absorption spectroscopy.
5. *Biogeochemical:* Samples are dried, and ashed at 550°C . and the resulting ash analyzed as in #1, multi-element analysis.
6. *Bismuth:* 0.50 Gram sample is digested with Nitric acid. The solution is analyzed by Atomic Absorption spectroscopy.
7. *Chromium:* 0.25 Gram sample is fused with Sodium Peroxide. The solution is analyzed by Atomic Absorption spectroscopy.

Rossbacher Laboratory

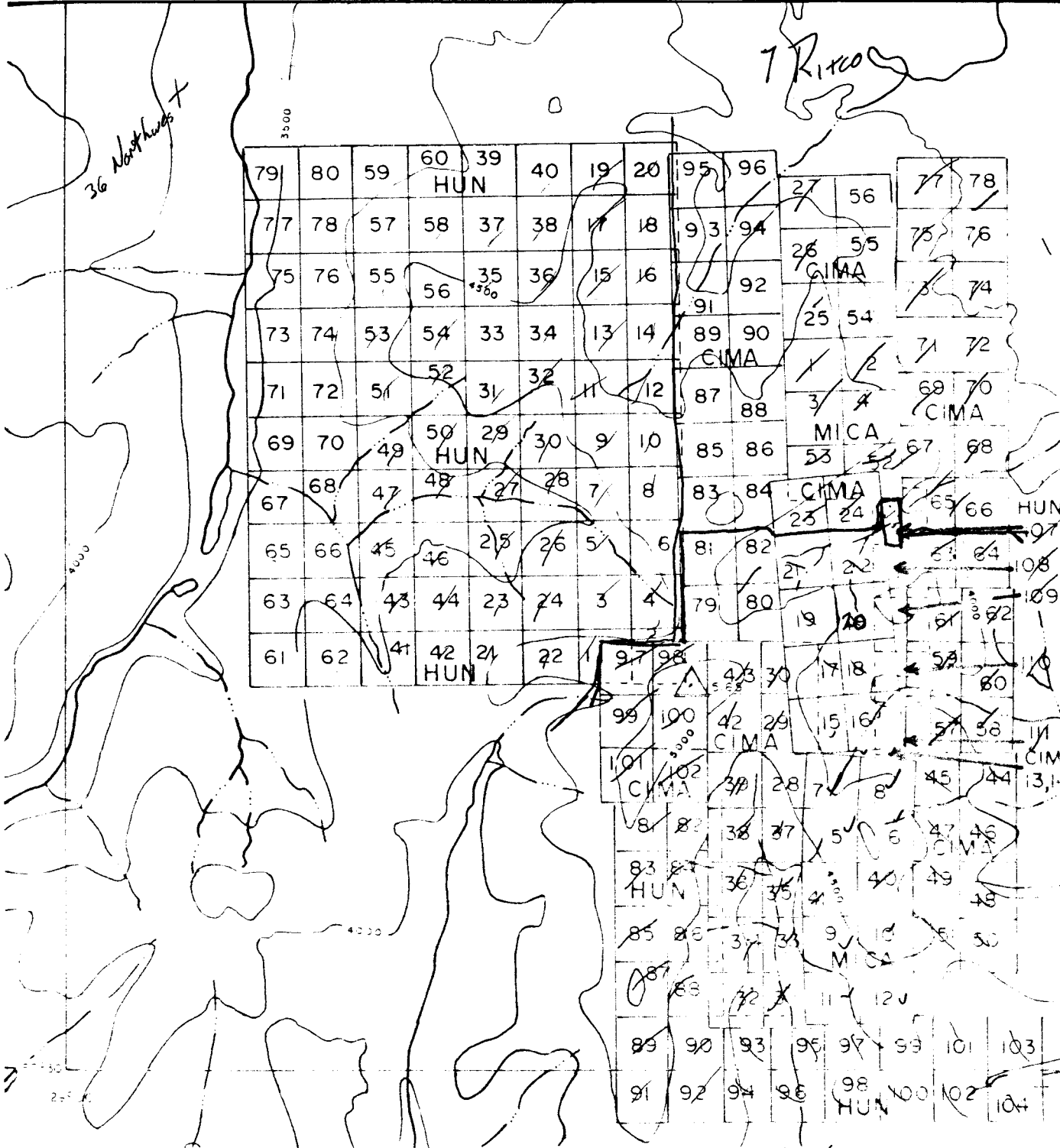
GEOCHEMICAL ANALYSTS & ASSAYERS

2225 S SPRINGER AVE.
BURNABY, B. C.
CANADA
TELEPHONE: 799-6910
AREA CODE: 604

(2)

METHOD OF ANALYSIS (CONT.)

8. Fluorine: 0.50 Gram sample is fused with a Carbonate Flux, and dissolved.
The resulting solution is analyzed for Fluorine by use of an Ion Selective Electrode.
9. Gold: 10.0 Gram sample is roasted at 550°C. and dissolved in Aqua Regia. The resulting solution is subjected to a Methylisobutyl Ketone extraction, which extract is analyzed for Gold using Atomic Absorption spectroscopy.
10. Mercury: 1.00 Gram sample is digested with Nitric and Sulfuric acids. The solution is analyzed by Atomic Absorption spectroscopy, using a cold vapor generation technique.
11. Partial Extraction and Fe/Mn oxides: 0.50 Gram sample is extracted using one of the following: Hot or cold 0.5 N. HCL, 2.5% E.D.T.A., Ammonium Citrate, or other selected organic acids. The solution is analyzed by use of Atomic Absorption spectroscopy.
12. pH: An aqueous suspension of soil, or silt is prepared, and its pH is measured by use of a pH meter.
13. Rapid Silicate Analysis: 0.10 Gram sample is fused with Lithium Metaborate, and dissolved in HNO₃.
The solution is analyzed by Atomic Absorption for SiO₂, Al₂O₃, Fe₂O₃, MgO, CaO, Na₂O, K₂O, TiO₂, P₂O₅, and MnO.
14. Tin: 0.50 Gram sample is sublimated by fusion with Ammonium Iodide, and dissolved.
The resulting solution is extracted into TOPO/MIBK and analyzed by Atomic Absorption spectroscopy.
15. Tungsten: 1.00 Gram sample is sintered with a carbonate flux, and dissolved.
The resulting extract is analyzed colorimetrically, after reduction with Stannous Chloride, by use of Potassium Thiocyanate.



6 Hunder

CANAMAX RESOURCES INC

MOUNT HUNDER PROPERTY
WATSON LAKE MINING DISTRICT - YUKON TERRITORY

HUN, CIMA, MICA CLAIMS

CLAIM MAP

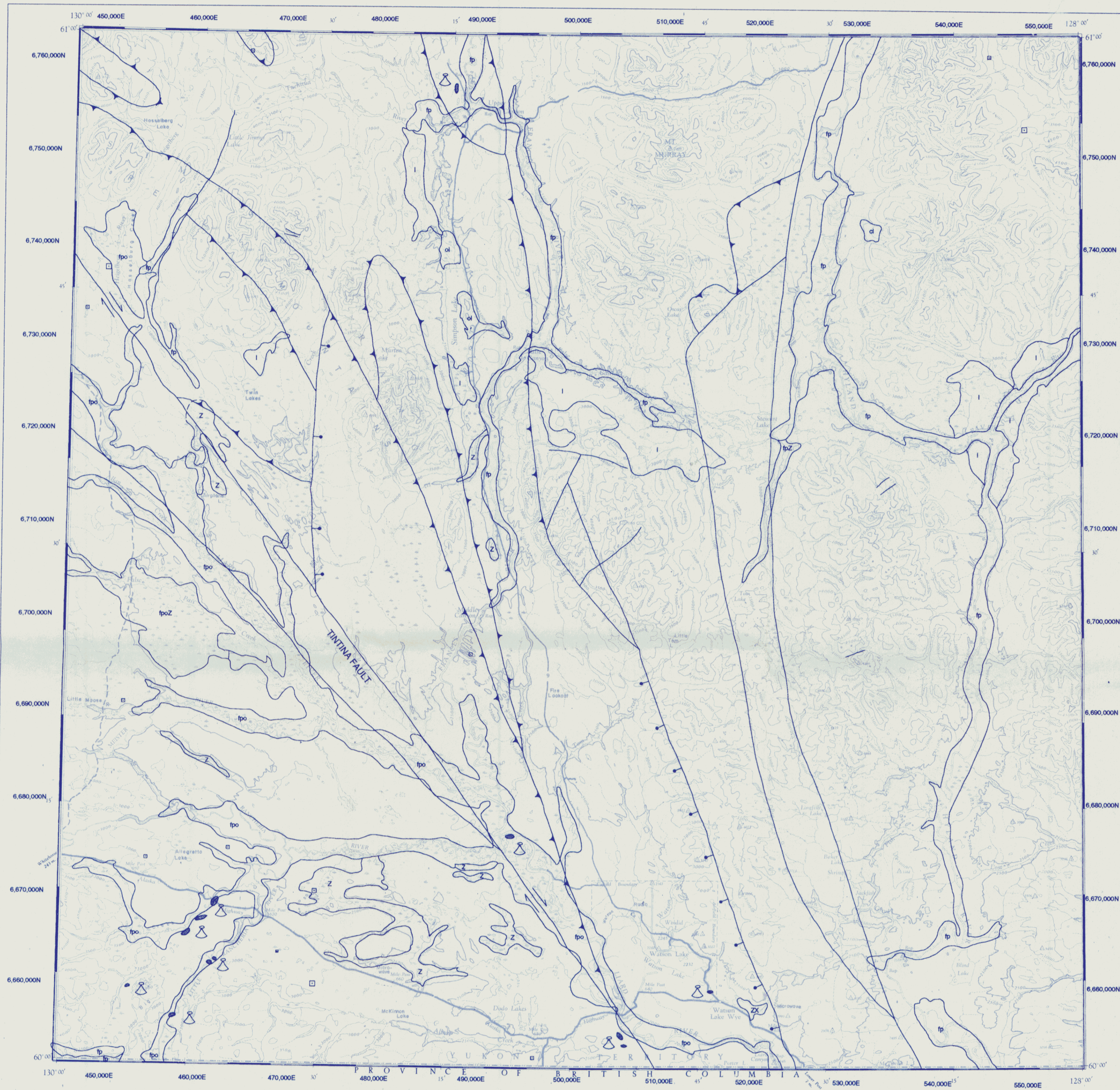
091615

SCALE 1" = 1000 FEET

DECEMBER 1994

MTN 1054 110

PLATE 10



LEGEND TERRAIN HAZARDS		
MAP SYMBOL	TERRAIN HAZARDS	ASSOCIATED RISK LEVELS, COMMENTS
Mass Movement Processes		
A	Slow Avalanches	high
F	Extreme to moderate rates of failure in soil and bedrock (sliding soil creep, rock creep, earthflow, soil or rock slump, debris or rock slide)	low to intermediate
R	Moderate to extremely rapid rates of failure in soil and bedrock (1.5 m/s to >3 m/s), including rock slump, debris slide, rock slide, debris flow, debris torrent, debris avalanche, rockfall, rock avalanche	high
Arctic, Alpine and Periglacial Processes		
X	Permafrost present	low risk
K	Thermokarst present	low risk
S	Softflooded	low to intermediate
Z	Grouped, cryoturbated, soilflooded, riveted	low to intermediate
Fluvial Processes		
B	Braided, unstable channels, risk of flooding	intermediate to high
E	Fluvial erosion, deposition and low risk of flooding	low to intermediate
J	Anastomosing	intermediate to high
U	Flooded regularly	intermediate to high
Miscellaneous Erosion Processes		
T	Karst	intermediate
P	Piping	intermediate to high
V	Gullied	low to intermediate
On Site Symbols		
	Unit boundary (defined, approximate)	
	Erosional escarpment	high
	Landslide escarpment	high
	Landslide (includes source and runout areas)	high
	Pingo	high
	Rock glacier	high
	Spring or saline seep	low
	Observation of frozen or ground ice	low
	Rapid mass movements (debris torrent) with known point source. Limits of runout not implied by symbol.	high
	Slow mass movement (earth flow) with landslide, escarpment source. Limits of landslide runout not implied by symbol.	intermediate to high
LEGEND GEOLOGICAL PROCESSES		
MAP SYMBOL	DESCRIPTION	INFERRED HAZARDS
df	Talus fan or apron, moderate to steep slope, coarse angular bedrock fragments, sources are often areas of rapidly dissecting bedrock	Rock fall and debris flows common on active fans, steep slopes generally unsuitable for traffic
dl	Landslide, moist slope, varies from large blocks of bedrock to finer material	Landslides generally are recurrent in susceptible areas and may become active if disturbed
cs	Colluvium covered slope, gentle to moderate slope, underlain by unsorted rubble, soilflooded and other periglacial features common	Areas of fine textured materials and gentle slopes at high elevations, where there is ground ice will be susceptible to high solifluction rates and thermokarst if disturbed
fa	Alluvial fan, active	Subject to shifts in channel and bar positions, occasionally subject to flooding
fp	Floodplain	Subject to shift in channel and bar positions, occasionally subject to flooding
ice	Glacier ice	Crevasses
im	Mountain ice caps	Avalanches, ice and rock falls, and crevasses
is	Cliff glacier	Avalanches, ice and rock falls
l	Lacustrine or glaciolacustrine sediments	Silt and clay, usually susceptible to frost heaving and, if permafrost present, to thermokarst when disturbed
mg	Rock glacier, debris covered glacier	Ice at depth make surface susceptible to thermokarst, unstable slopes
o	Organic	Thick organic matter is often underlain by permafrost. Disturbance of permafrost may cause poor drainage and thermokarsting
LEGEND FAULTS		
	Fault defined, approximate, assumed, extrapolated beneath overburden	
	Fault Solid circle indicates downthrow side Arrows indicate relative movement	
	Thrust Fault (both indicate upthrust side)	
	Alpho Lineament	
LEGEND SEISMIC EVENTS		
SYMBOL	MAGNITUDE REPRESENTED	QUATERNARY VOLCANISM
■	<2.0	
□	2.0 to 2.999	
□	3.0 to 3.999	
□	4.0 to 4.999	
□	5.0 to 5.999	
□	>6.0	
		Quaternary Volcanism

References

Terrain Hazards and Geological Processes

GREY, B.J., 1981. Liard River Basin: spring flood, Yukon Territory; National Hydrology Research Institute, Department of Indian and Northern Affairs and Northern Development, Government of Canada.

KLASSEN, R.W., and MORISON, S.R., 1981. Surficial geology, Watson Lake, Yukon Territory; Geological Survey of Canada, Map 21-1981.

MOUGEOT, C.M., 1992. Soil Survey of selected land parcels, Watson Lake area; Community and Transportation Services, Lands Branch, Yukon Territory.

ROSTAD, H.P.W., KOZAK, L.M., and ACTON, D.F., 1977. Soil survey and land evaluation of the Yukon Territory; Department of Indian Affairs and Northern Development, Northern Environmental and Renewable Resources Branches, Land Management Division, Whitehorse, Yukon.

Faults

GABRIELSE, H., 1967. Geology, Watson Lake, Yukon Territory; Geological Survey of Canada, Preliminary Map 19-1966.

WHEELER, J.O., and McFEELY, P. (comp.), 1991. Tectonic assemblage map of the Canadian Cordillera and adjacent parts of the United States of America; Geological Survey of Canada, Map 1712A.

Seismic Events

Canadian Earthquake Epicentre File, maintained by the Geological Survey of Canada, Geophysics Division.

Indian and Northern Affairs Canada
Exploration and Geological Services Division

Open File 1994

GEOLOGICAL PROCESSES INVENTORY MAP
of
WATSON LAKE
105 A

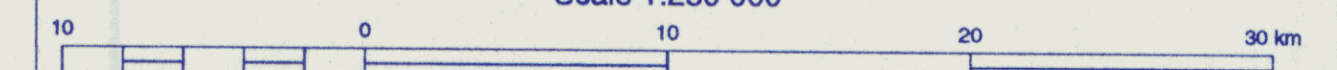
TERRAIN HAZARDS
GEOLOGICAL PROCESSES
FAULTS
SEISMIC EVENTS

by
Doherty, R.A., Mougeot, C.M., and vanRanden, J.A.

Copies of this map and the accompanying Geological Summary may be obtained from Canada Map Office, Exploration and Geological Services Division, Indian and Northern Affairs Canada, #345-300 Main Street, Whitehorse, Yukon Y1A 2B5 (403) 667-3204; FAX: (403) 667-3198

Recommended citation: Doherty, R.A., Mougeot, C.M., and vanRanden, J.A., 1994.

Scale 1:250 000



Display Copy Only