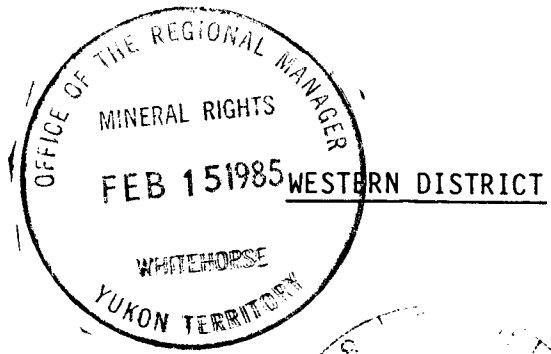


COMINCO LTD.

EXPLORATION

NTS: 105 0/1,2



ASSESSMENT REPORT

GEOCHEMISTRY

NIDD PROPERTY

MAYO MINING DISTRICT

YUKON TERRITORY

LAT. 63°11'N LONG. 130°21'W

WORK PERIOD: AUGUST 22-23, 1984

091606

JANUARY 1985

D. RHODES

This report has been examined by
the Geological Evaluation Unit
under Section 53 (4) Yukon Quartz
Mining Act and is allowed as
representation work in the amount
of \$ 3200.00.

D. D. Emmond

for Regional Manager, Exploration and
Geological Services for Commissioner
of Yukon Territory.

TABLE OF CONTENTS

	<u>Page</u>
I. SUMMARY	1
II. INTRODUCTION	1
A. LOCATION	1
B. HISTORY	1
C. OWNERSHIP	1
III. GEOCHEMISTRY	3
A. ANALYTICAL PROCEDURE	3
B. RESULTS	3

* * * *

ATTACHMENTS

- APPENDIX A - STATEMENT OF EXPENDITURES
- APPENDIX B - AFFIDAVIT
- APPENDIX C - STATEMENT OF QUALIFICATIONS

	<u>SCALE</u>
PLATE 1 - CLAIM MAP	1:25,000
PLATE 2 - IMPERIAL CREEK AREA 1983 AND 1984 SOIL GEOCHEMISTRY GRID SHOWING SAMPLE SITES AND LEAD ANALYSES IN PPM	1:5,000
PLATE 3 - IMPERIAL CREEK AREA 1983 AND 1984 SOIL GEOCHEMISTRY GRID SHOWING SAMPLE SITES AND LEAD ANOMALIES	1:5,000
PLATE 4 - IMPERIAL CREEK AREA 1983 AND 1984 SOIL GEOCHEMISTRY GRID SHOWING SAMPLE SITES AND SILVER ANALYSES IN PPM	1:5,000
PLATE 5 - IMPERIAL CREEK AREA 1983 AND 1984 SOIL GEOCHEMISTRY GRID SHOWING SAMPLE SITES AND SILVER ANOMALIES	1:5,000
PLATE 6 - IMPERIAL CREEK AREA 1983 AND 1984 SOIL GEOCHEMISTRY GRID SHOWING SAMPLE SITES AND ZINC ANALYSES IN PPM	1:5,000
PLATE 7 - IMPERIAL CREEK AREA 1983 AND 1984 SOIL GEOCHEMISTRY GRID SHOWING SAMPLE SITES AND ZINC ANOMALIES	1:5,000

COMINCO LTD.

EXPLORATION

WESTERN DISTRICT

NTS: 105 0/1,2

24 January 1985

ASSESSMENT REPORT

GEOCHEMISTRY

NIDD PROPERTY

MAYO MINING DISTRICT, YUKON TERRITORY

I. SUMMARY

Cominco Ltd.'s Nidd Property is located within the Mayo Mining District of the Yukon Territory approximately 390 km northeast of Whitehorse, Yukon Territory. This property, consisting of 636 claims, was originally staked between 1976 and 1981. Underlying the property are units of the Ordovician-Silurian Road River Group and Devonian-Mississippian Earn Group.

This report covers a soil geochemical program undertaken on Claims Nidd 747, 748, 749, 750, 769, 771 on August 22 and 23, 1984.

II. INTRODUCTION

A. Location

The Nidd Property is situated within the Mayo Mining District approximately 390 kilometres northeast of Whitehorse, Yukon Territory (Figure 1). Access to the property is either by fixed winged aircraft or truck to the MacMillan Pass airstrip and then by helicopter 24 kilometres west to a camp centrally located on the property.

Latitude: 63°11'N
Longitude: 130°21'W
NTS: 105 0/1,2

B. History

The Nidd Property was staked between 1976 and 1981 to cover the westerly strike extension of the stratigraphy which hosts the nearby Tom and Jason lead-zinc-silver deposits. Since 1976 numerous development programs have been carried out. These programs have included some or all of the following: geology, soil and rock geochemistry, geophysics, diamond drilling, road building, trenching.

C. Ownership

The Nidd Property consists of 636 claims 100% owned by Cominco Ltd. (Plate 1). The table on the following page summarizes the present tenure situation of the claims as of acceptance of this report.

TABLE 1

<u>Claim</u>	<u>Date Recorded</u>	<u>Assessment Work Due</u>
KOBUK Nos. 1 to 8	Sept. 3, 1976	Dec. 3, 1996
NIDD Nos. 1 to 11, 13, 15, 17 19, 255, 256, 300, 302 to 307, 309, 311	Oct. 20, 1976	Oct. 20, 1985
NIDD Nos. 12, 21, 24, 35, 38, 47 to 49, 55 to 58, 63 to 66, 70 to 73, 76 to 79, 81 to 85, 88 to 93, 95, 104, 115, 116 130, 275 to 278, 316 to 320, 324 to 326, 328 to 346	Oct. 20, 1976	Dec. 3, 1996
NIDD Nos. 200, 217	Oct. 20, 1976	Dec. 3, 1992
NIDD Nos. 14, 16, 18, 20, 23 25 to 30, 37, 39, 40, 50, 51, 199, 201, 207, 209, 257 to 260, 321 to 323, 327, 401 to 422, 427 to 434	Oct. 20, 1976	Dec. 3, 1997
NIDD Nos. 198, 204, 206, 208, 212, 213, 215, 219, 223, 230, 347 to 349, 353 to 371, 423 to to 426, 435 to 475	Oct. 20, 1976	Dec. 3, 1993
NIDD Nos. 22, 31 to 34, 36, 244, 246, 248 to 253	Oct. 20, 1976	Dec. 3, 1994
NIDD Nos. 245, 247	Oct. 20, 1976	Dec. 3, 1990
NIDD Nos. 96 to 101, 105 to 110, 117 to 122, 131 to 136, 145 to 147 283, 284	Oct. 20, 1976	Dec. 3, 1995
NIDD Nos. 372 (Fr.), 373 (Fr.)	Oct. 20, 1976	Dec. 3, 1991
NIDD Nos. 138, 140, 142, 144, 148 to 158, 160, 165, 167, 169, 171, 173, 175 to 179, 184 to 193, 203	Oct. 20, 1976	Dec. 3, 1999
NIDD Nos. 221, 222, 224, 226 to 229, 232 to 235	Oct. 20, 1976	Dec. 3, 1995
NIDD Nos. 161, 163, 174, 182, 205	Oct. 20, 1976	Dec. 3, 2000
NIDD Nos. 194, 195, 202, 210, 211	Oct. 20, 1976	Dec. 3, 1996

TABLE 1 (CONTINUED)

<u>Claim</u>	<u>Date Recorded</u>	<u>Assessment Work Due</u>
NIDD No. 183	Oct. 20, 1976	Dec. 3, 2001
NIDD Nos. 476 to 482, 498, 500, 502, 504 to 506	Oct. 20, 1976	Dec. 3, 1998
NIDD Nos. 214, 216, 218, 220, 225, 231, 236, 237, 621, 623, 624, 631 to 634	Oct. 20, 1976	Dec. 3, 1994
NIDD Nos. 240 to 243, 301	Oct. 20, 1976	Dec. 3, 1985
NIDD Nos. 483 to 496, 507 to 558, 699 to 730, 789 to 795, 803 to 818	June 25, 1981	Dec. 3, 1993
NIDD Nos. 575 to 620, 622, 625 to 630, 796, 797	June 25, 1981	Dec. 3, 1989
NIDD Nos. 559 to 562	July 22, 1981	Dec. 3, 1992
NIDD Nos. 563, 564	July 22, 1981	Dec. 3, 1988
NIDD Nos. 565 to 574	July 22, 1981	Dec. 3, 1986
NIDD Nos. 650 to 652, 731 to 738, 740, 751 to 766, 773 to 788	Aug. 7, 1981	Dec. 3, 1986
NIDD Nos. 648, 749 to 750, 770 to 772	Aug. 7, 1981	Dec. 3, 1986
NIDD Nos. 646, 744 to 748, 767 to 769, 798 to 801	Aug. 7, 1981	Dec. 3, 1987

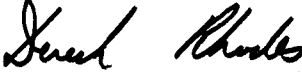
III. GEOCHEMISTRYA. Analytical Procedure

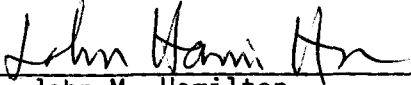
The 1983 Nidd Property soil sampling program consisted of the taking of 105 soil samples along grid lines in the Imperial Creek area of the property. All samples were shipped to Cominco's Exploration Research Laboratory in Vancouver, B.C. for analysis. Following digestion by a 20% nitric acid solution, the lead, zinc and silver contents were determined by atomic absorption.


B. Results

Results of the soil surveys in the Imperial Creek area for lead, zinc and silver are shown on Plates 2 to 7. Zinc values indicate an anomaly in the Imperial

Creek valley over an area of about 500 metres by 300 metres with values in excess of 1000 ppm zinc. Lead and silver values were generally low with only a few values over 50 ppm lead and 1.0 ppm silver. These higher values occurred east of and at higher elevation than the zinc anomaly. The area of the zinc anomaly is covered by extensive overburden with no outcrops.

Reported by: 
D. Rhodes
Senior Geologist

Endorsed by: 
John M. Hamilton
Assistant Manager,
Exploration, W.D.

Approved for
Release by: 
G. Harden
Manager, Exploration
Western District

DR/cgs

Distribution

Mining Recorder (2)
Western District
DR

APPENDIX A

STATEMENT OF EXPENDITURES

NIDD PROPERTY

AUGUST 22-23, 1984

Geochemistry Costs:

Soil samples - 105 prepared and analyzed for Pb, Zn, Ag @ \$4.55/sample		\$ 477.75
Helicopter Support 2 hrs @ \$600/hour		1,200.00
Staff Time		
D. Rhodes 1 day @ \$234.27		234.27
S. Noakes 2 days @ 134.64		269.28
R. Sharp 1 day @ 187.44		187.44
A. Taylor 1 day @ 139.92		139.92
A. Stordey 1 day @ 92.40		92.40
Domicile 6 man days @ \$100/man day		<u>600.00</u>
	TOTAL	\$3,201.06

COST DISTRIBUTION

<u>Claim</u>	<u>No. Samples</u>	<u>% Total</u>	<u>Amount</u>
Nidd 747	9	8	\$ 256.08
Nidd 748	28	27	864.29
Nidd 749	15	14	448.15
Nidd 750	38	36	1,152.38
Nidd 769	10	10	320.11
Nidd 771	<u>5</u>	5	<u>160.05</u>
	105		\$3,201.06

APPENDIX B

A F F I D A V I T

I, Dereck Rhodes, of the Municipality of North Vancouver District, in the Province of British Columbia, make oath and say:

1. THAT I am employed as a geologist by Cominco Ltd., and as such have a personal knowledge of the facts to which I hereinafter depose;
2. THAT I annexed hereto and marked as Appendix A to this my affidavit is a true copy of expenditures incurred in connection with a geological program carried out on the Nidd mineral claims:
3. THAT said expenditures were incurred between the twenty-second day of August and the twenty-third day of August, 1984 for the purpose of mineral exploration on the above noted claims.

Signed: _____

Dereck Rhodes

Dereck Rhodes


Senior Geologist

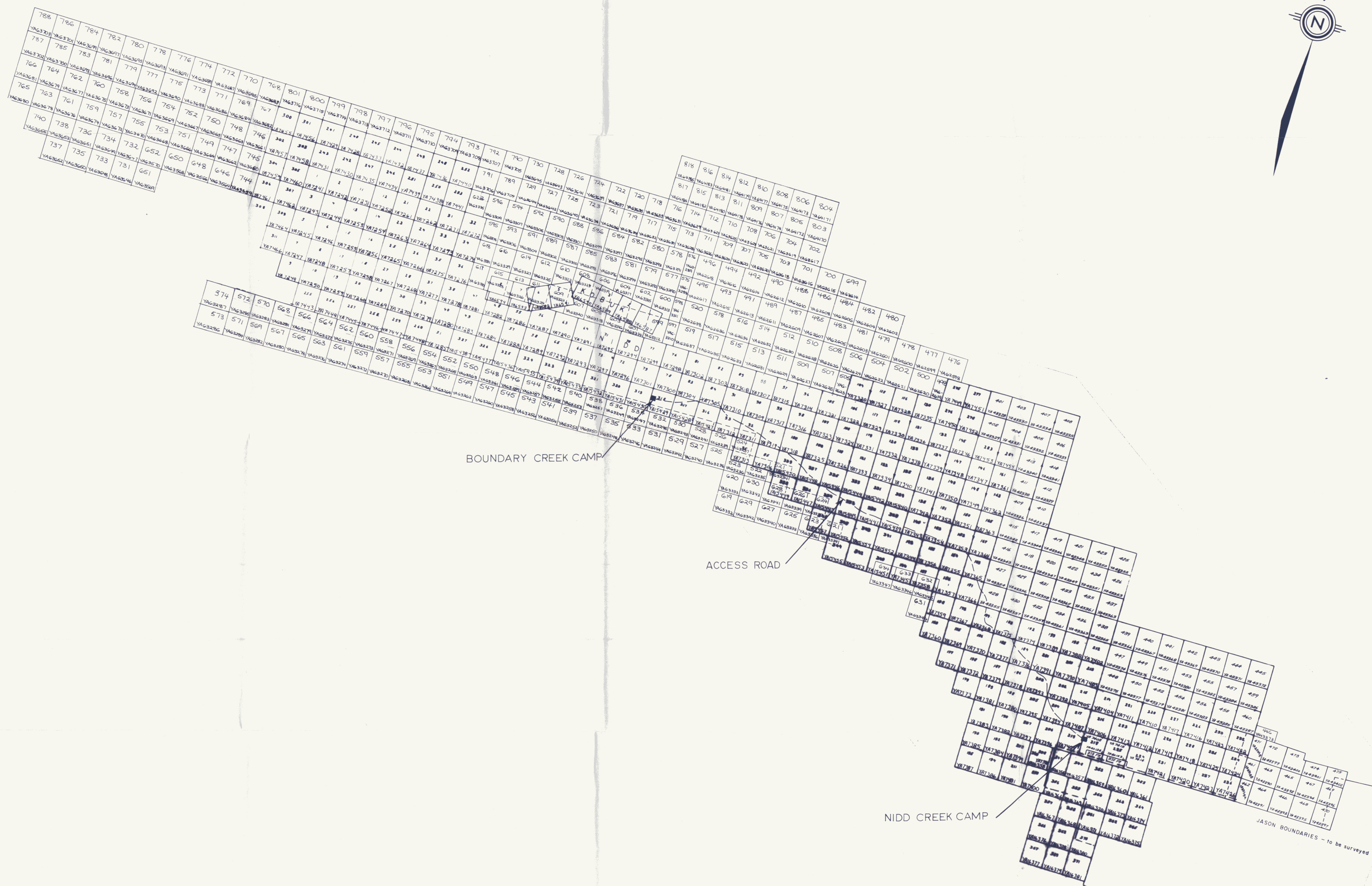
APPENDIX C

STATEMENT OF QUALIFICATIONS

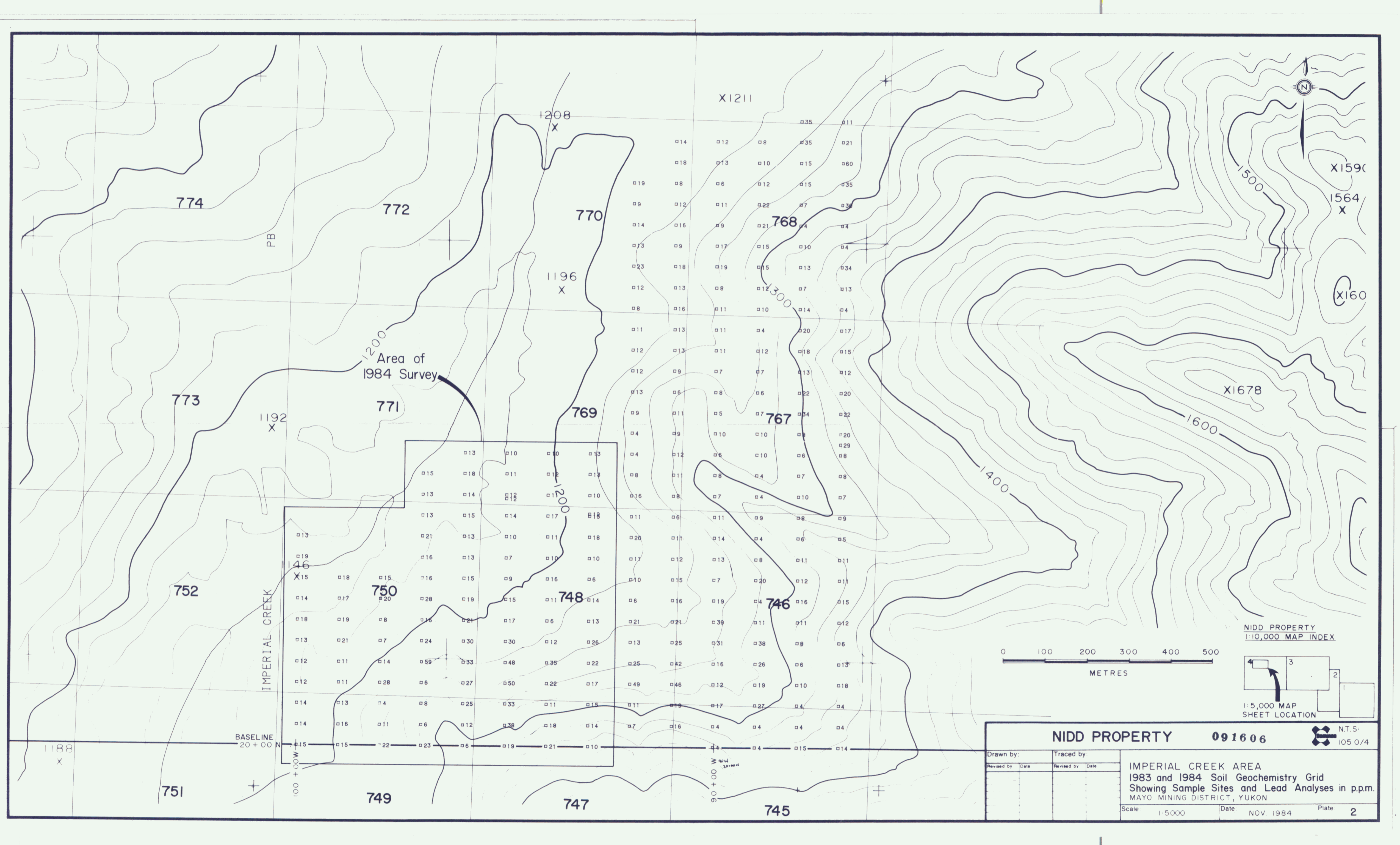
I, Dereck Rhodes, of the Municipality of North Vancouver District, in the Province of British Columbia, hereby certify:

1. THAT I am a geologist residing at 2514 Bronte Road, North Vancouver, British Columbia, with a business address at 700-409 Granville Street, Vancouver, British Columbia.
2. THAT I graduated with a B.Sc., in geology from McMaster University in 1969.
3. THAT I have practiced geology with Cominco Ltd. from June 1969 to the present.

Signed: 
Dereck Rhodes
Senior Geologist



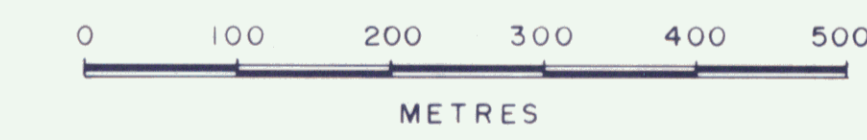
NIDD	
Drawn by:	Traced by: SAW
Checked by: [blank]	Verified by: [blank]
Date: 25 77	Date: 25 85
CLAIM MAP 091606	
Scale: 1/2 mile = 1"	Date: September 1981
Plate: 1	FORM 210-080



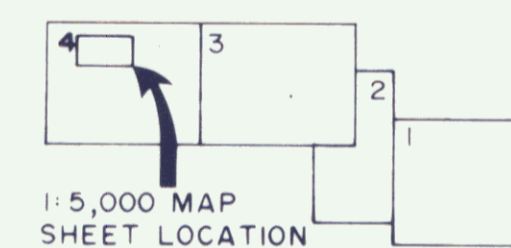
Area of 1984 Survey

IMPERIAL CREEK

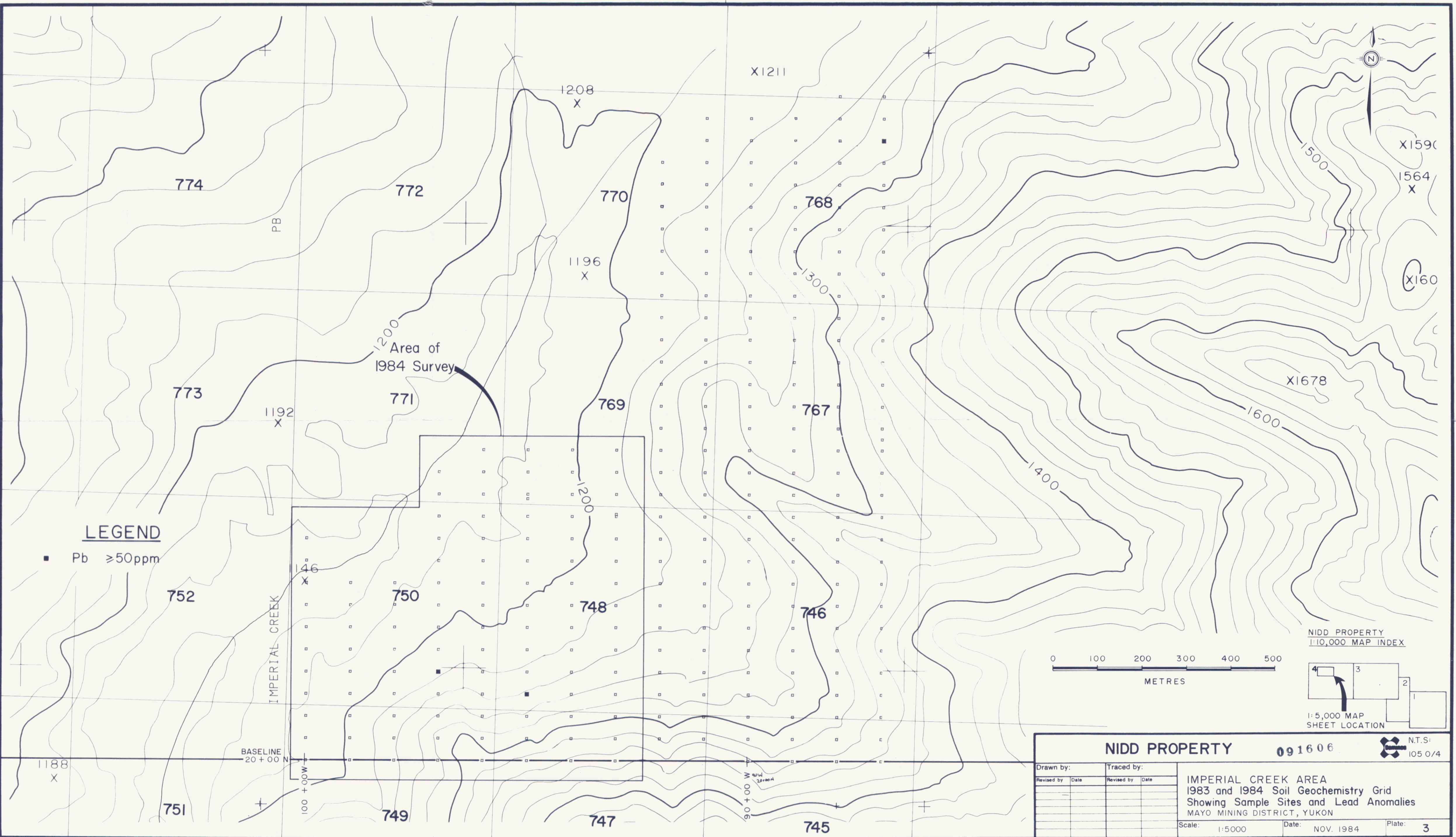
BASELINE 20+00 N



NIDD PROPERTY
1:10,000 MAP INDEX



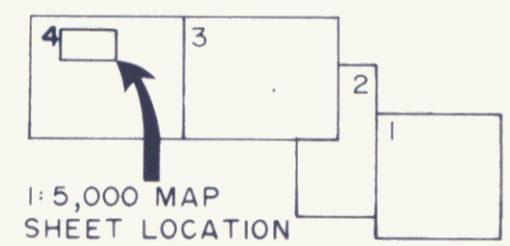
NIDD PROPERTY 091606			
Drawn by:	Traced by:		
Revised by:	Date:	Revised by:	Date:
IMPERIAL CREEK AREA 1983 and 1984 Soil Geochemistry Grid Showing Sample Sites and Lead Analyses in p.p.m. MAYO MINING DISTRICT, YUKON			
Scale: 1:5000	Date: NOV. 1984	Plate: 2	N.T.S: 105 0/4



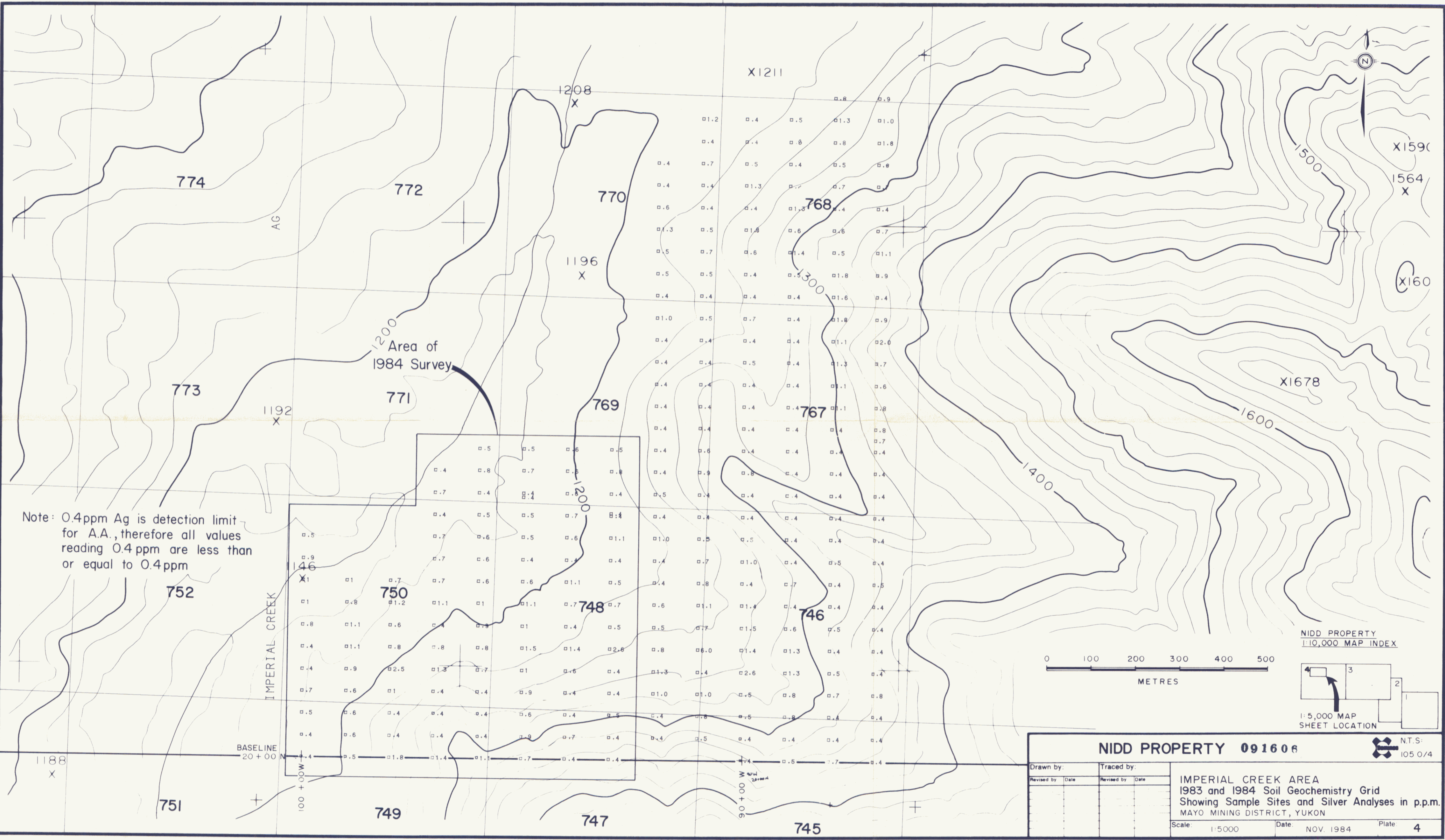
LEGEND

■ Pb ≥ 50ppm

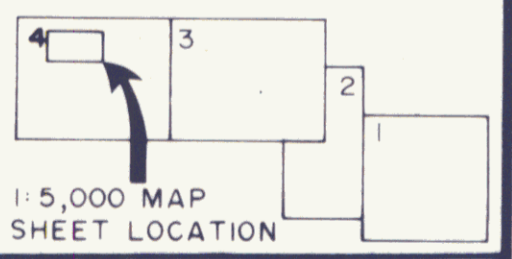
NIDD PROPERTY
1:10,000 MAP INDEX



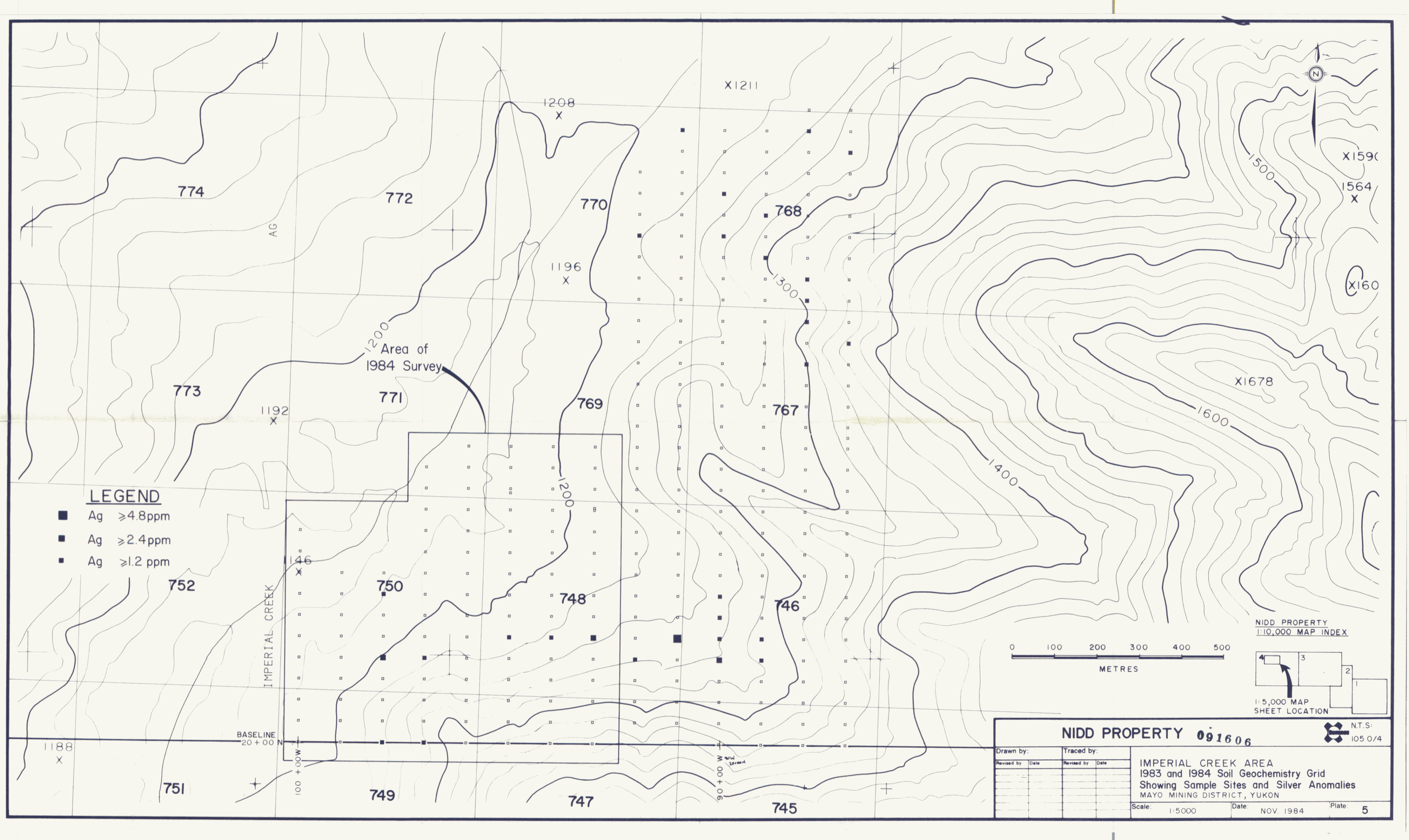
NIDD PROPERTY		091606	N.T.S: 105 0/4
Drawn by:	Traced by:		IMPERIAL CREEK AREA 1983 and 1984 Soil Geochemistry Grid Showing Sample Sites and Lead Anomalies MAYO MINING DISTRICT, YUKON
Revised by:	Date:	Date:	
Scale:	1:5000	Date:	NOV. 1984
		Plate:	3



NIDD PROPERTY
1:10,000 MAP INDEX



NIDD PROPERTY 091606				N.T.S: 105 0/4	
Drawn by:	Traced by:		IMPERIAL CREEK AREA 1983 and 1984 Soil Geochemistry Grid Showing Sample Sites and Silver Analyses in p.p.m. MAYO MINING DISTRICT, YUKON		
Revised by:	Date	Revised by:			Date
Scale:	1:5000	Date:	NOV. 1984	Plate:	4



LEGEND

- Ag ≥ 4.8 ppm
- Ag ≥ 2.4 ppm
- Ag ≥ 1.2 ppm

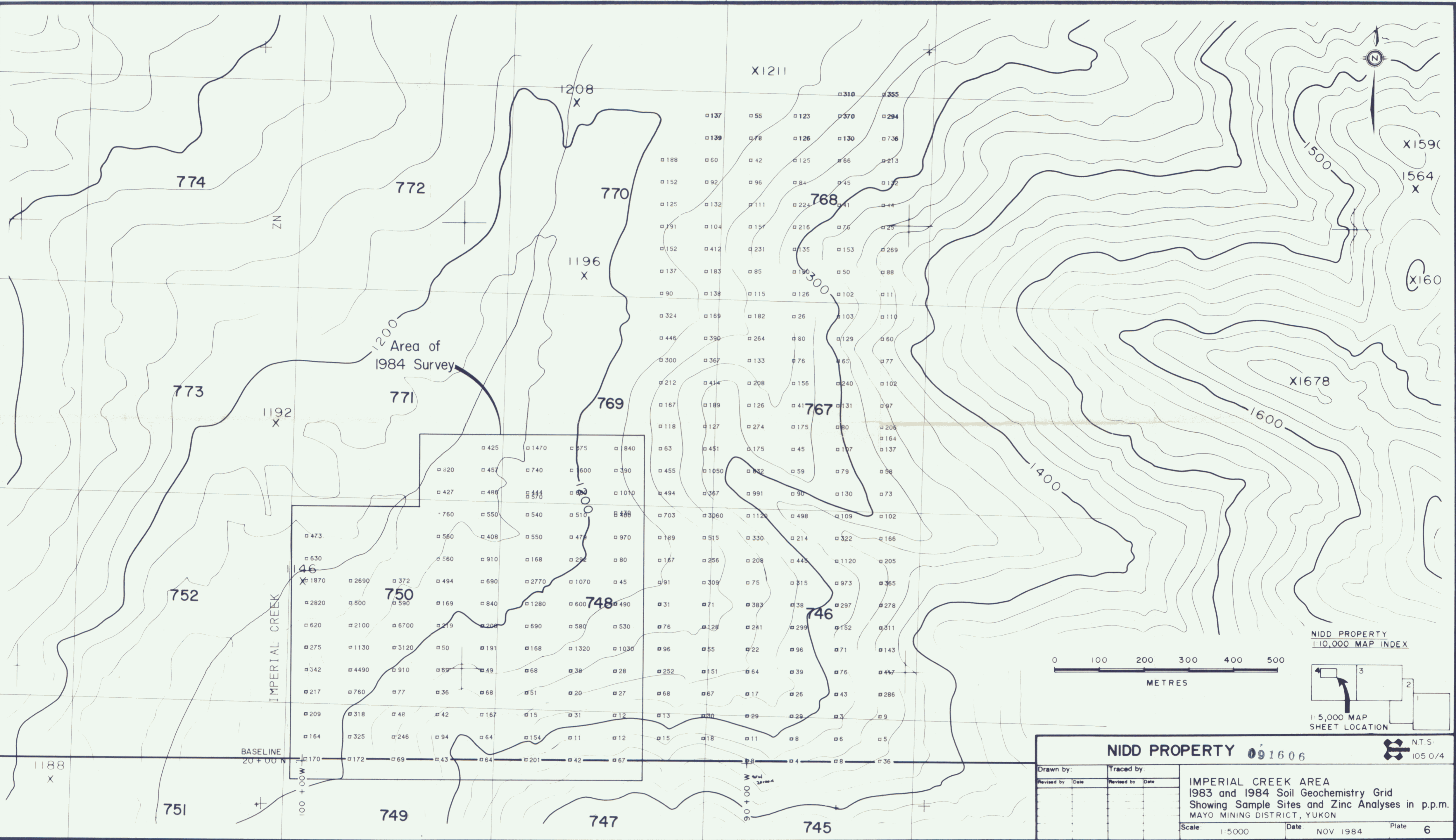
NIDD PROPERTY
1:10,000 MAP INDEX

0 100 200 300 400 500
METRES

1:5,000 MAP SHEET LOCATION

NIDD PROPERTY 091606 N.T.S. 105 0/4

Drawn by:	Traced by:	IMPERIAL CREEK AREA	
Revised by:	Date:	1983 and 1984 Soil Geochemistry Grid	
		Showing Sample Sites and Silver Anomalies	
		MAYO MINING DISTRICT, YUKON	
Scale:	1:5000	Date:	NOV. 1984
		Plate:	5



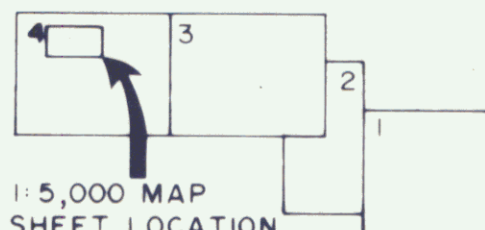
Area of 1984 Survey

IMPERIAL CREEK

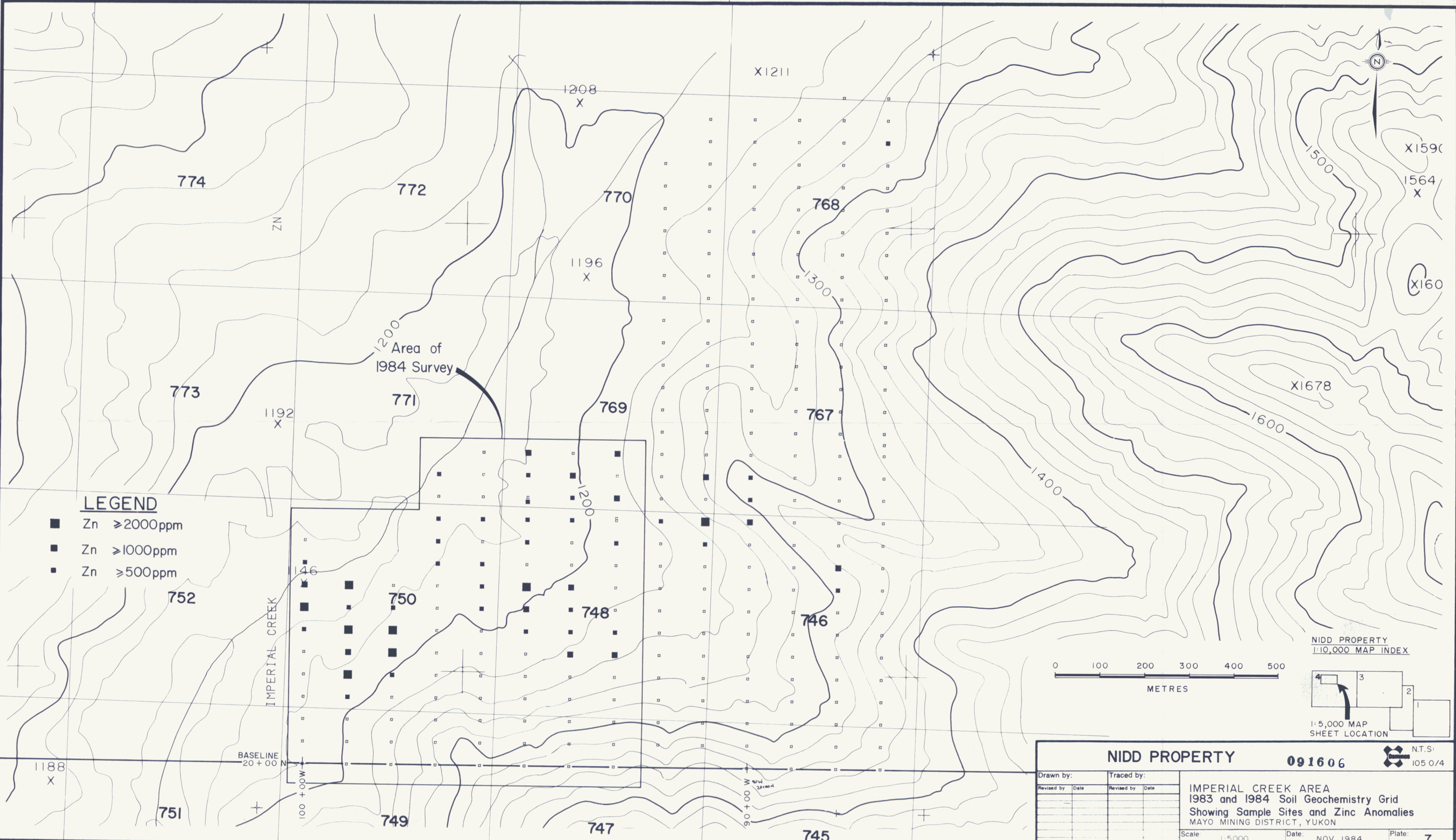
BASELINE 20+00 N



NIDD PROPERTY
1:10,000 MAP INDEX



NIDD PROPERTY 091606		
Drawn by: Revised by: Date:	Traced by: Revised by: Date:	
IMPERIAL CREEK AREA 1983 and 1984 Soil Geochemistry Grid Showing Sample Sites and Zinc Analyses in p.p.m. MAYO MINING DISTRICT, YUKON		
Scale: 1:5000	Date: NOV. 1984	Plate: 6

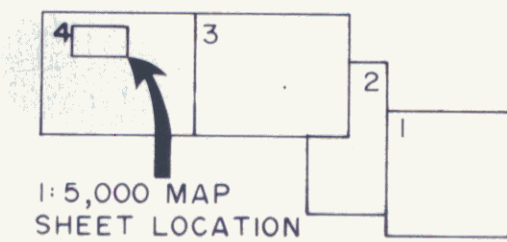


LEGEND

- Zn ≥ 2000ppm
- Zn ≥ 1000ppm
- Zn ≥ 500ppm



NIDD PROPERTY
1:10,000 MAP INDEX



1:5,000 MAP
SHEET LOCATION

NIDD PROPERTY				091606	N.T.S: 105 0/4
Drawn by:		Traced by:		IMPERIAL CREEK AREA 1983 and 1984 Soil Geochemistry Grid Showing Sample Sites and Zinc Anomalies MAYO MINING DISTRICT, YUKON	
Revised by	Date	Revised by	Date		
Scale: 1:5000		Date: NOV. 1984		Plate: 7	