

GEOLOGICAL AND GEOCHEMICAL REPORT  
ON THE TIM 1-160 MINERAL CLAIMS

Watson Lake Mining District, Yukon Territory  
NTS: 105/B-1; Latitude 60°03'N; Longitude 130°02'W

By: Michael A. Stammers, B.A., Geologist  
Cordilleran Engineering

November, 1984

**Y.T. 1984 TIM ASSESSMENT REPORT**

091501

The work was performed by  
the [unclear] [unclear] [unclear]  
[unclear] [unclear] [unclear] [unclear]  
[unclear] [unclear] and [unclear] [unclear]  
representation work in the amount  
of \$ [unclear]

[unclear] [unclear] [unclear] [unclear] and  
[unclear] [unclear] [unclear] [unclear]  
of [unclear] [unclear].

GEOLOGICAL AND GEOCHEMICAL REPORT

ON THE

TIM 1-160 MINERAL CLAIMS

WATSON LAKE MINING DISTRICT, YUKON TERRITORY  
N.T.S.: 105/B-1  
Latitude 60°03'N; Longitude 130°02'W

FOR

REGIONAL RESOURCES LTD.

1980-1055 West Hastings Street  
Vancouver, B.C. V6E 2E9

BY

M. A. Stammers, B.A.  
Geologist

**CORDILLERAN ENGINEERING**

1980-1055 West Hastings Street  
Vancouver, B.C. V6E 2E9

DATE SUBMITTED: November, 1984

WORK PERIOD: June 28, 1984 to September 24, 1984

TABLE OF CONTENTS

<u>Chapter</u>		<u>Page</u>
1.0	SUMMARY AND CONCLUSIONS .....	1
2.0	RECOMMENDATIONS .....	5
3.0	INTRODUCTION .....	6
3.1	Location and Access .....	6
3.2	Physiography and Climate .....	6
3.3	Exploration History .....	7
3.4	1984 Exploration Program .....	7
3.5	Claims .....	7
4.0	GEOLOGY .....	8
4.1	Regional Geology .....	8
4.2	Property Geology .....	8
4.3	Structural Geology .....	9
5.0	MINERALIZATION .....	10
6.0	SOIL GEOCHEMISTRY .....	11
6.1	Introduction .....	11
6.2	Results .....	11
7.0	STATEMENT OF EXPENDITURES .....	13
8.0	LIST OF PERSONNEL AND CONTRACTORS .....	14
9.0	WRITER'S CERTIFICATE .....	15
10.0	BIBLIOGRAPHY .....	16
11.0	APPENDIX Geochemical Lab Reports .....	17

Table

<u>Table 1:</u>	Claims Data .....	7
-----------------	-------------------	---

Figures

<u>Figure 1:</u>	Location Map .....	2
<u>Figure 2:</u>	Claims Map .....	3

Table of Contents

Plates

(in pockets)

		<u>Scale</u>
<u>Plate 1:</u>	Property Geology .....	1:10,000
<u>Plate 2:</u>	Lead Geochemistry .....	1:5,000
<u>Plate 3:</u>	Zinc Geochemistry .....	1:5,000
<u>Plate 4:</u>	Silver Geochemistry .....	1:5,000
<u>Plate 5:</u>	Manganese Geochemistry .....	1:5,000
<u>Plate 6:</u>	Compilation .....	1:10,000

S U M M A R Y   A N D   C O N C L U S I O N S

## CHAPTER 1.0

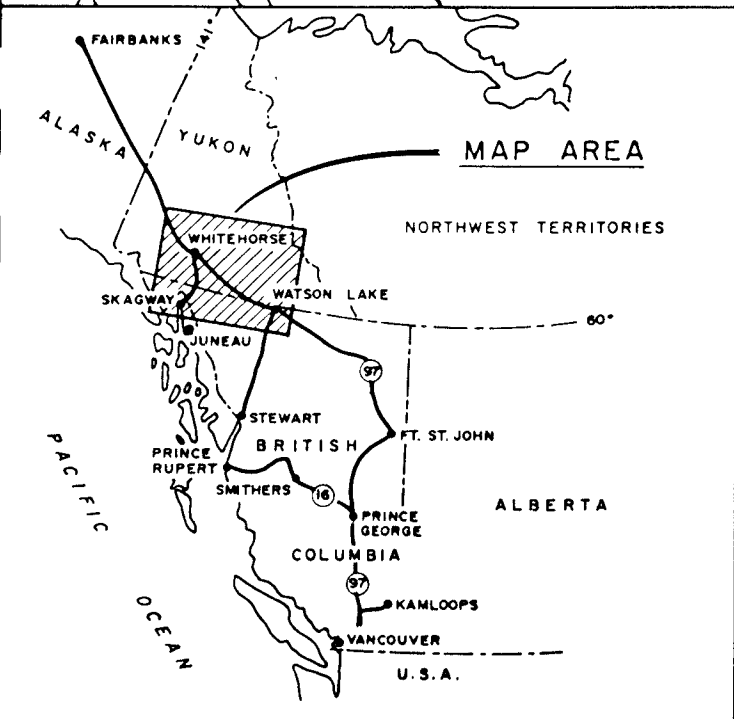
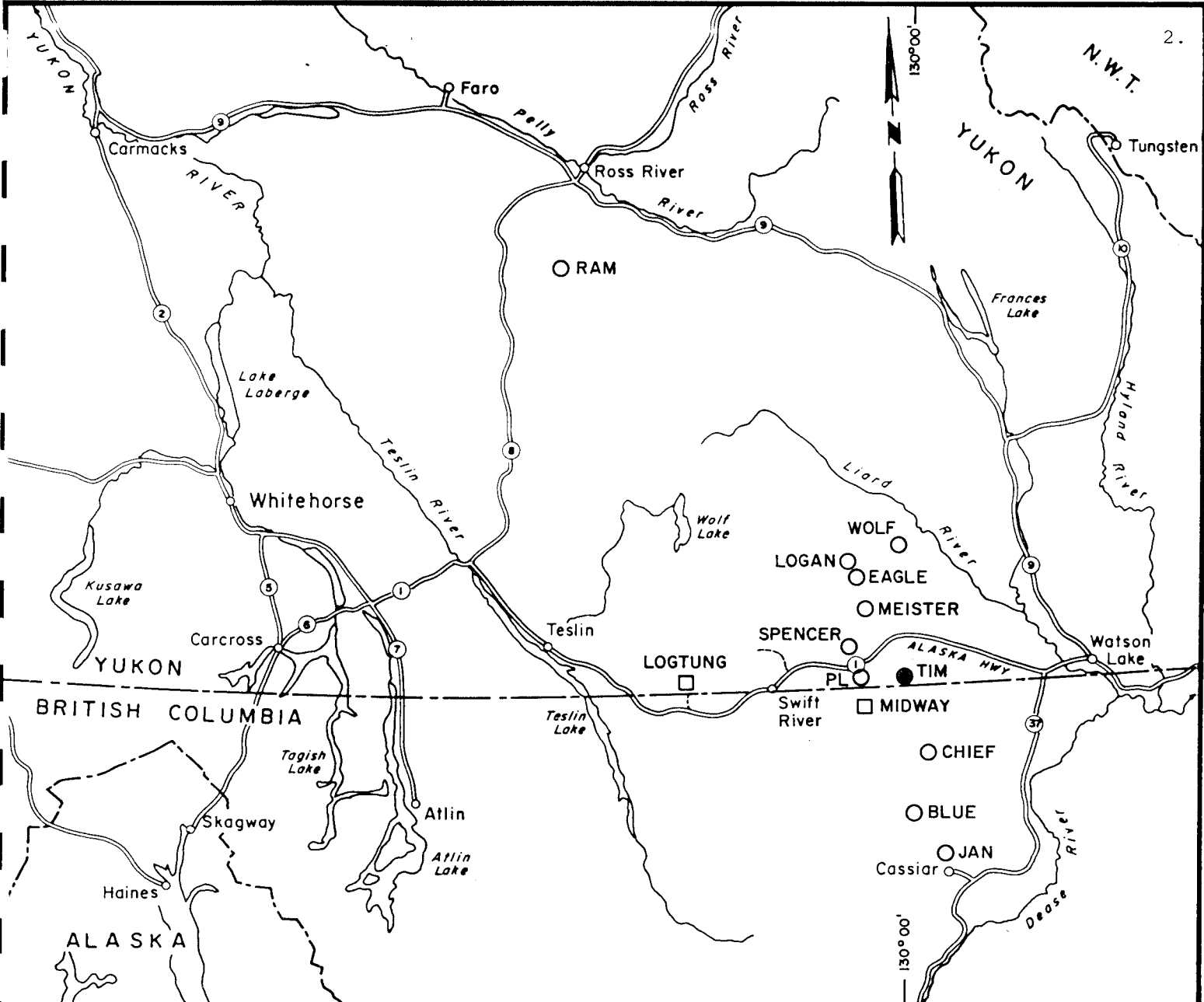
### SUMMARY AND CONCLUSIONS

The Tim property consists of 160 contiguous mineral claims in the Watson Lake Mining District (NTS: 105/B-1) and is located 72 kilometres west of Watson Lake, Yukon Territory (Figures 1 and 2). Staking of the Tim claims was completed in September, 1983. Property acquisition and subsequent work have been conducted by Cordilleran Engineering on behalf of Regional Resources Ltd.

The Tim claims primarily cover forested terrain with poor exposure (<5%) of rock units. The property is situated 11 km southeast of kilometre 1118 of the Alaska Highway; present access is by helicopter.

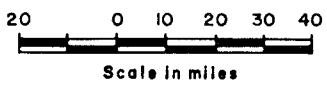
Work conducted on the property in 1983 consisted of reconnaissance stream sediment sampling, soil geochemistry and hammer prospecting. During the 1984 field season work included grid preparation, extensive soil geochemical sampling and geological mapping.

The geological setting and the potential for silver-lead-zinc replacement-type mineralization on the Tim property is very good. The overall environment may be compared favourably with the nearby Midway silver-lead-zinc deposit of Regional Resources Ltd. located 20 km to the southwest.

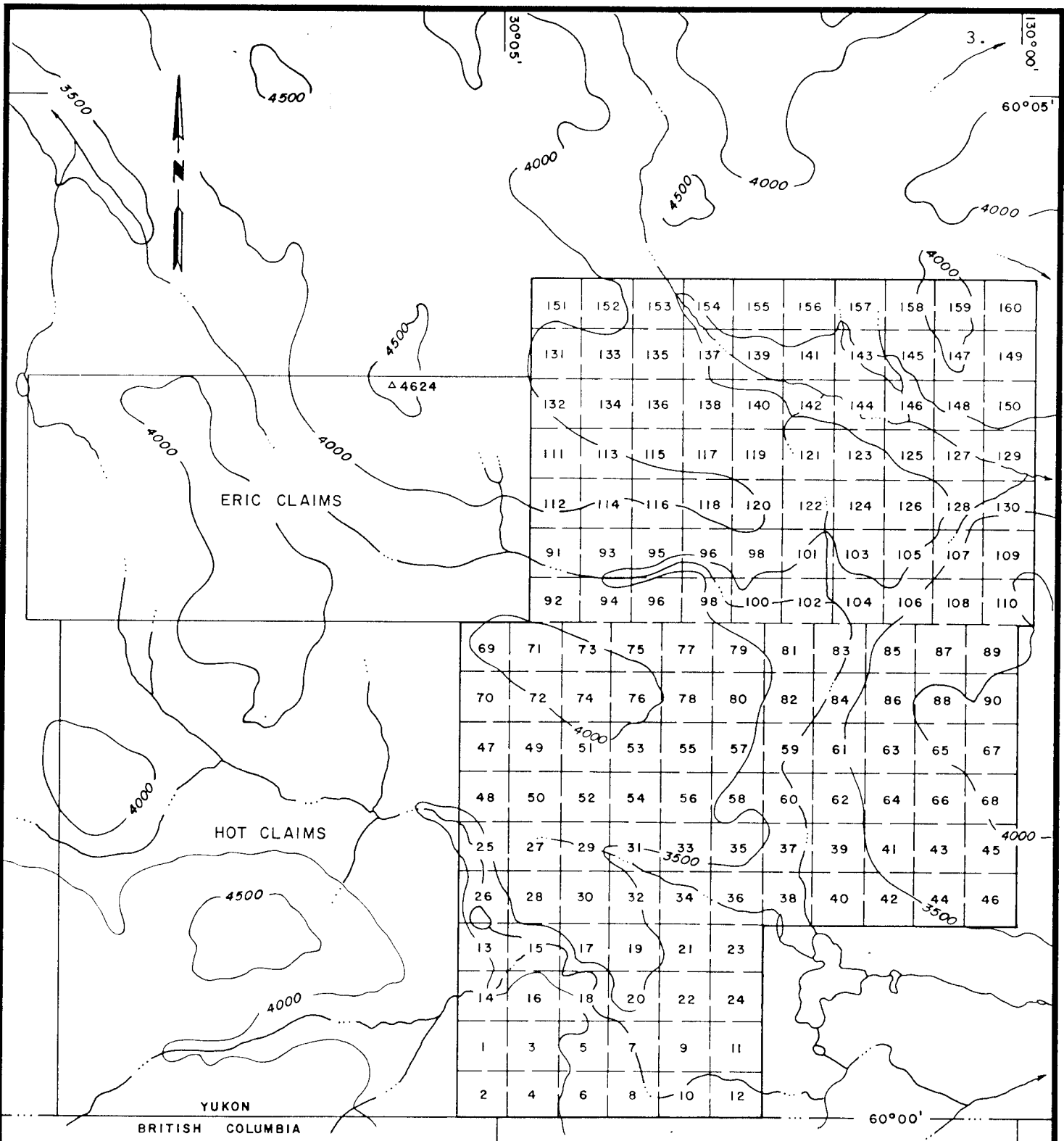


REGIONAL RESOURCES LTD.

# PROPERTY LOCATION MAP



BY  
**CORDILLERAN ENGINEERING**  
 1980-1055 W. HASTINGS STREET  
 VANCOUVER, B.C. V6E 2E9



REGIONAL RESOURCES LTD.  
 TIM PROPERTY  
 CLAIM MAP

WOLF LAKE MAP AREA, N.T.S. 105 B/1  
 WATSON LAKE MINING DISTRICT, YUKON TERRITORY

SCALE: 1 : 50,000

CORDILLERAN ENGINEERING  
 1980-1055 W. HASTINGS STREET  
 VANCOUVER, B.C. V6E 2E9

Two principal map units have been outlined on the Tim property. They include a Lower Cambrian limestone units and a Lower Cambrian or Earlier quartzite, siltstone and shale unit (Plate 1).

Geochemical soil sampling has given very encouraging results (Plates 2-5). Three seperate west-northwest trending anomalous areas have been outlined. Anomalous areas range in size from 600 to 1200 metres in length by 400 metres in width. Results include values to 1020 ppm lead, 1030 ppm zinc, 5.2 ppm silver, 4200 ppm manganese and 7.00% iron.

Retention of the Tim claims is advised and further work is recommended.

R E C O M M E N D A T I O N S

## CHAPTER 2.0

### RECOMMENDATIONS

A two-phase exploration program is recommended for the Tim claims.

#### PHASE I

Phase I work should consist of the following work:

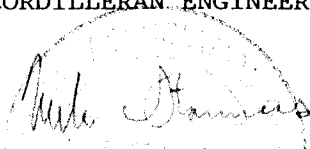
1. Soil sampling in the eastern claims area to evaluate and close off the projected anomalous areas.
2. Undertake a detailed hammer prospecting program over areas of anomalous soil geochemistry.
3. Conduct Inducted Polarization or Electro-Magnetic geophysical surveys over selected areas of anomalous soil geochemistry.
4. Examine in the field the feasibility of conducting a backhoe-trenching program. In particular, evaluate route selection, terrain and over-burden conditions.

#### PHASE II

Conduct a backhoe-trenching program over geochemical, geophysical and geological targets.

Respectfully submitted

CORDILLERAN ENGINEERING



M. A. Stammers, B.A.  
Geologist

MAS/z  
November, 1984

I N T R O D U C T I O N

## CHAPTER 3.0

### INTRODUCTION

This report describes a program of geological and geochemical exploration conducted on the Tim 1-160 mineral claims during the period June 28, 1984 to September 24, 1984.

#### 3.1 LOCATION AND ACCESS

The Tim property is located 72 km west of Watson Lake, Yukon at latitude 60°03'N and longitude 130°02'W (Figure 1). The property is situated 11 km southeast of kilometre 1118 of the Alaska Highway and 11 km east of the Tootsee River secondary road. Field operations were based out of Regional Resources' Midway camp located 20 km to the southwest. Present access to the Tim property is by helicopter.

#### 3.2 PHYSIOGRAPHY AND CLIMATE

The Tim property covers forested terrain with minor subalpine and valley marsh conditions. Vegetation consists of spruce, balsam fir, pine, poplar, dwarf alder and willow. Relief is gentle to moderate and elevations range from 1000 to 1350 metres above sea level.

Climate in the Tim claims area is characterized by short, warm summers and long, cold winters. Precipitation year around is light to moderate.

### 3.3 EXPLORATION HISTORY

The Tim 1-160 claims were staked in September, 1983 to cover lead-zinc-silver stream sediment geochemical anomalies and a favourable geological environment with potential for locating a carbonate-hosted massive sulfide deposit similar to that on the nearby Midway property.

Work conducted in the Tim claims area in 1983 included stream sediment silt sampling, reconnaissance soil sampling and hammer prospecting.

The Tim claims are bounded on the west by the Eric claims of Rialto Resources and the Hot claims of Canamax Resources. Canamax Resources have completed line-cutting, trenching and some diamond drilling on their "Hot" tungsten-skarn prospect.

### 3.4 1984 EXPLORATION PROGRAM

A geochemical and geological exploration program was conducted on the Tim property during the 1984 field season.

Grid preparation included 13.0 kilometres of cut line and 54.0 kilometres of flag and compass line.

A total of 1150 soil samples, 2 rock samples and one stream sediment sample were collected from the Tim property.

The Tim claims and immediate environs were mapped at 1:10,000 scale.

### 3.5 CLAIMS DATA (NTS: 105/B-1)

The Tim property consists of 160 Quartz Mineral Claims located in the Watson Lake Mining District, Yukon Territory, owned by Regional Resources Ltd. of Vancouver, British Columbia.

Table 1

#### CLAIMS DATA

<u>Claim (s)</u>	<u>Record Number (s)</u>	<u>Expiry Date (s)</u>
Tim 1-160 incl.	YA 70414 - YA 70572	September 26, 1984 - 1986*

\*Pending receipt of Certificates of Work (1984 Assessment)

Figure 2 (page 3) shows the location of the Tim 1-160 mineral claims.

G E O L O G Y

## CHAPTER 4.0

# G E O L O G Y

### 4.1 REGIONAL GEOLOGY

The regional geology is based on mapping in the Wolf Lake Sheet (NTS 105/B) by Poole, 1951-1955, and Roddick and Green, 1959, of the Geological Survey of Canada.

The Tim claims area is underlain by a northwest trending fold repeated sequence of Lower Cambrian or Earlier to Silurian sedimentary rocks. Units described by the Geological Survey include: Lower Cambrian or Earlier, quartzite, minor slate and phyllite, quartz grit and fine pebble conglomerate; Lower Cambrian grey limestone with minor dolomite, phyllite and slate; and Middle Cambrian to Middle Silurian thin bedded buff and grey slate, phyllite and limestone. A northwest trending fault separates this sequence from younger Devonian-Mississippian sediments to the west.

### 4.2 PROPERTY GEOLOGY (Plate 1)

Outcrop on the Tim property is restricted to a few resistant weathering knobs and bluffs. Consequently, more competent lithologies such as limestone appear to form the dominant map unit on the property. More recessive lithologies such as shale, mudstone and siltstone are exposed only as float. Lithological contacts presented on the Preliminary Geology Map are based in part on float occurrences.

Unit 1 is comprised of an undifferentiated group of sediments including quartzite, siltstone, mudstone and shale. Thick quartzite weathers light-grey and is exposed in outcrop in the central claims area. Finely laminated light brown weathering siltstone, mudstone and shale occurs in float and small outcrops in the north and northcentral claims area.

Unit 2 consists of medium bedded to massive, buff grey to grey weathering limestone with minor shale partings. The limestone is frequently cross cut by calcite fracture fillings and is rarely dolomitized.

#### 4.3 STRUCTURAL GEOLOGY

Stratigraphy on the Tim property trends northwest with dips to the southwest. The reason for the apparent repetition of Unit 1 is unknown. No evidence for significant folding has been found. Poor exposure of rock units prevents a thorough structural interpretation.

M I N E R A L I Z A T I O N

## CHAPTER 5.0

### MINERALIZATION

To date, no mineralization has been discovered on the Tim 1-160 mineral claims.

The current exploration effort is focusing on the search for a carbonate-hosted massive sulfide mineral deposit, similar to Regional Resource's nearby Midway silver-lead-zinc deposit.

SOIL GEOCHEMISTRY

## CHAPTER 6.0

# SOIL GEOCHEMISTRY

### 6.1 INTRODUCTION

A total of 1150 samples were collected from the "B" soil horizon on the Tim property. Samples were collected every 50 metres on lines 200 metres apart and placed in grid-numbered soil sample bags. The corresponding sample location was marked in the field by a grid numbered piece of plastic flagging tape. Notes were made in the field concerning sample depth, colour and texture.

After drying the samples in camp, they were shipped to Bondar-Clegg and Company Ltd.'s North Vancouver, B.C. laboratory for sample preparation and analytical treatment. The minus 80 mesh fraction was digested with a hot extraction HNO<sub>3</sub>-HCl solution and lead-zinc-silver-manganese-iron analysis was completed using standard atomic absorption techniques. Laboratory analytical reports are appended to this report.

### 6.2 RESULTS

Results of the Tim soil geochemical survey are plotted for each element on Plates 2 to 5. In addition, anomalous values have been contoured and statistical summaries are presented on the plates for lead, zinc, silver and manganese. Statistical interpretation was completed using the Lepeltier Method (see Bibliography, Chapter 10.0).

Results of the geochemical survey are encouraging with three significant anomalies outlined.

Anomaly 1 is situated between lines 50+00N and 56+00N and between 8+00W and 20+00W. The coincident lead-zinc-silver-manganese anomaly is centered on a west-northwest trending axis and is approximately 1200 metres long by 400 metres wide. Values of up to 397 ppm lead, 1030 ppm zinc, 2.6 ppm silver, 4200 ppm manganese and 7.00% iron were obtained from soils in anomaly 1. Anomaly 1 is underlain by Lower Cambrian limestone.

Anomalous area 2 is located between lines 70+00N and 76+00N and between 5+00W and 20+00W. The anomaly is actually a series of smaller lead-silver anomalies aligned on a west-northwest trending axis. Maximum values returned include 440 ppm lead, 296 ppm zinc, 2.0 ppm silver, 3600 ppm manganese and 3.80% iron. This anomalous area is underlain by Lower Cambrian limestone and Lower Cambrian or Earlier quartzite, siltstone and shale.

Anomalous area 3 is situated between lines 60+00N and 68+00N and is again represented by a series of smaller anomalies along a west-northwest trending axis from 0+00W to 20+00W. The main part of anomalous area 3 is located in the western sampling area and is characterized by strong manganese and zinc values. The lead and silver components are generally lower and smaller. Values of up to 1020 ppm lead, 565 ppm zinc, 5.2 ppm silver, 2500 ppm manganese and 4.10% iron were returned. Area 3 is underlain by Lower Cambrian or Earlier limestone, quartzite, siltstone and shale.

STATEMENT OF EXPENDITURES

C A N A D A ) In the matter of a geological and geochemical report on  
 ) the Tim 1-160 (inclusive) mineral claims on behalf of  
 ) Regional Resources Ltd.  
 TO W I T : )

I, Michael A. Stammers, agent for Regional Resources Ltd.

of 1980-1055 W. Hastings Street, Vancouver, B.C. V6E 2E9

do solemnly declare, - that an exploration program was undertaken on the Tim mineral property during the period June 28, 1984 to September 24, 1984 and the following expenses incurred performing this work and in the later preparation of the report.

<u>WAGES:</u>	Field: Geologist/Supervision	11 d x \$120/d x \$1.35* .....	\$1,782	
	Senior Sampler	11 d x \$ 88/d x \$1.35 .....	1,307	
	Sampler	11 d x \$ 68/d x \$1.35 .....	1,010	
	Sampler	10 d x \$ 60/d x \$1.35 .....	810	
	Cook	4 d x \$ 84/d x \$1.35 .....	453	
	Office: Geologist/Report Prep.	7 d x \$150/d .....	1,050	\$ 6,412
<u>PROFESSIONAL SERVICES &amp; MANAGEMENT FEES:</u>	To Cordilleran Engineering	.....		5,516
<u>TRANSPORTATION</u>	Charter Helicopter	15.7 hr x \$400/hr .....	6,280	
	Helicopter Fuel	15.7 hr x \$ 75/hr .....	1,177	
	CP Air, Travel Expenses	.....	380	7,837
<u>ROOM AND BOARD:</u>	Crew	43 mandays x \$20/d .....	860	
	Contractors	35 mandays x \$20/d .....	700	1,560
<u>GEOCHEMICAL ANALYSES</u>	890 Pb,Zn,Ag,Mn,Fe	@ 5.40/soil sample .....	4,806	
	260 Pb,Zn,Ag,Mn	@ 4.60/soil sample .....	1,196	6,002
<u>CONTRACT LINECUTTING</u>	.....			3,727
<u>FREIGHT</u>	.....			374
<u>CONTRACT DRAFTING</u>	.....			2,475
<u>PRINTING, OFFICE SUPPLIES</u>	.....			451
<u>AIR PHOTO ENLARGEMENT</u>	.....			297
				<u>\$34,651</u>

\*Overtime and Benefits Factor.

And I make this solemn declaration conscientiously believing it to be true and knowing that it is of the same force and effect as if made under oath and by virtue of The Canada Evidence Act.

Declared before me at Vancouver )  
 in the Province of British Columbia this )  
13th day of December 1984)

*Michael A. Stammers*  
 \_\_\_\_\_

~~A Commissioner for Oaths for Yukon Territory~~  
 OR Notary Public for Yukon Territory.

LIST OF PERSONNEL AND CONTRACTORS

## 8.0

## LIST OF PERSONNEL AND CONTRACTORS

PERSONNEL

<u>Name/Address</u>	<u>Position</u>	<u>Dates Worked</u>	<u>Days Worked</u>
Cindy Harris Whiterock, B.C.	Cook	September 10,12,23,24/84	4 days
David O'Brien Ladysmith, B.C.	Sampler	September 1,2,3,5,6,8, 9,10,12,23,24/84	11 days
Kathy Richardson Whistler, B.C.	Sampler	September 1,2,3,5,6,8, 9,10,12,23/84	10 days
Michael Stammers Port Coquitlam, B.C.	Geologist/ Supervisor	June 29 September 1,2,3,5,6,8, 9,10,12,23/84	11 days
Jan Tindle Whistler, B.C.	Senior Sampler	September 1,2,3,5,6,8, 9,10,12,23,24/84	11 days

CONTRACTORS

<u>Name/Address</u>	<u>Work contracted</u>	<u>Dates Worked</u>	<u>Days Worked</u>
McCrorry Holdings (Yukon) Ltd. Whitehorse, Yukon	Linecutting	June 29 to July 11,1984 August 2, 1984	14 days

WRITER'S CERTIFICATE

# CORDILLERAN ENGINEERING

1980 GUINNESS TOWER, 1055 WEST HASTINGS STREET, VANCOUVER, B.C. V6E 2E9 TEL: (604) 681-8381

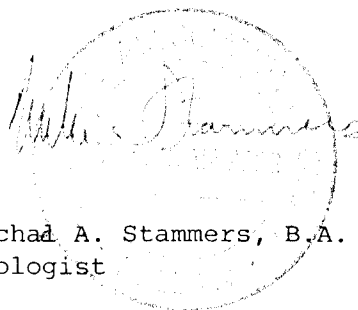
## CHAPTER 9.0

### WRITER'S CERTIFICATE

I, Michael A. Stammers of Port Coquitlam, British Columbia hereby certify that:

1. I am a geologist residing at 1134 Lombardy Drive, and employed by Cordilleran Engineering of 1980-1055 West Hastings Street.
2. I have received a B.A. degree in Geology and Geography from McMaster University, Hamilton, Ontario in 1977 and I am a Fellow of the Geological Association of Canada.
3. I have practiced my profession for eleven years in British Columbia, Yukon and the Northwest Territories.
4. I am the author of this report and the supervisor of the field work conducted on the Tim 1 to 160 claims by Cordilleran Engineering during the period June 28 to September 24, 1984.
5. I have no beneficial interest in the claims covered by this report or in Regional Resources Ltd.

CORDILLERAN ENGINEERING



Michael A. Stammers, B.A.  
Geologist

MAS/z  
November, 1984  
Vancouver, British Columbia

BIBLIOGRAPHY 137

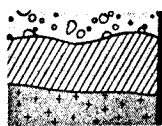
## CHAPTER 10.0

## B I B L I O G R A P H Y

1. Summary Report on the Tim Silver, Lead, Zinc Property  
For: Regional Resources, December, 1983  
By: Cordilleran Engineering
  
2. Geological Survey of Canada, Map 10-1960.
  
3. Lepeltier, Claude:  
A Simplified Statistical Treatment of Geochemical Data by Graphical  
Representation  
Economic Geology, Vol. 64, 1969, pp.538-550.

APPENDIX

Bondar-Clegg &amp; Company Ltd.

130 Pemberton Ave.  
North Vancouver, B.C.  
Canada V7P 2R5  
Phone: (604) 985-0681  
Telex: 04-352667

BONDAR-CLEGG

Geochemical  
Lab Report

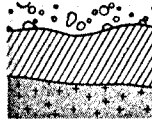
REPORT: 124-2909

PROJECT: IIM

PAGE 1

SAMPLE NUMBER	ELEMENT UNITS	Pb PPM	Zn PPM	Ag PPM	Mn PPM	Fe PCT	NOTE	SAMPLE NUMBER	ELEMENT UNITS	Pb PPM	Zn PPM	Ag PPM	Mn PPM	Fe PCT
S I74N 13+00W		152	230	0.8	365	2.70		S I76N 13+00W		231	238	0.4	740	2.40
S I74N 13+50W		221	151	1.6	500	3.10		S I76N 13+50W		148	151	0.4	720	2.45
S I74N 14+00W		221	189	0.6	655	2.55		S I76N 14+00W		137	179	0.3	480	2.25
S I74N 14+50W		61	113	0.3	365	2.45		S I76N 15+00W		276	296	0.7	730	2.65
S I74N 15+00W		75	125	0.4	440	2.55		S I76N 15+50W		128	164	0.2	630	2.55
S I74N 15+50W		254	212	0.7	600	2.90		S I76N 16+00W		90	108	0.5	600	2.60
S I74N 16+50W		155	150	0.7	620	2.45		S I76N 16+50W		222	194	0.5	600	2.20
S I74N 17+00W		211	176	0.7	570	2.65		S I76N 17+00W		189	210	0.6	1300	2.65
S I74N 17+50W		71	96	0.3	370	2.20		S I76N 17+50W		271	332	0.7	620	2.80
S I74N 18+00W		363	232	1.8	710	2.80		S I76N 18+00W		180	267	0.4	360	2.55
S I74N 18+50W		316	242	0.9	620	2.55		S I76N 18+50W		180	227	0.6	690	1.85
S I74N 19+00W		265	200	1.2	655	2.75		S I76N 19+50W		194	334	0.5	725	2.50
S I74N 19+50W		333	240	1.4	695	2.70		S I76N 20+00W		200	228	0.7	1200	2.60
S I74N 20+00W		289	234	1.8	670	2.95		S I30+00N 00W		31	135	0.3	220	2.20
S I76N 0+00W		58	65	<0.2	225	1.85		S I30+00N 50W		21	84	<0.2	1300	2.30
S I76N 0+50W		105	101	0.4	305	2.55		S I30+00N 100W		17	144	0.6	1050	2.85
S I76N 1+00W		78	77	<0.2	205	2.15		S I30+00N 150W		10	140	0.6	690	2.45
S I76N 1+50W		49	109	0.6	365	2.80		S I30+00N 200W		6	102	<0.2	1000	1.20
S I76N 2+00W		39	113	<0.2	200	2.35		S I30+00N 250W		17	104	0.3	2950	3.10
S I76N 2+50W		82	80	0.3	400	2.70		S I30+00N 300W		15	120	0.3	5000	2.75
S I76N 3+00W		50	87	0.5	335	2.30		S I30+00N 350W		13	76	<0.2	1000	2.65
S I76N 3+50W		56	87	0.2	290	2.45		S I30+00N 400W		20	90	<0.2	320	2.90
S I76N 4+00W		137	180	0.6	580	2.35		S I30+00N 450W		18	82	<0.2	315	3.65
S I76N 4+50W		159	165	0.7	650	2.55		S I30+00N 500W		6	196	1.0	3650	1.20
S I76N 5+00W		97	126	0.4	470	1.70		S I30+00N 550W		10	57	<0.2	415	2.05
S I76N 5+50W		101	161	0.4	660	2.30		S I30+00N 600W		10	61	<0.2	400	2.55
S I76N 6+00W		119	142	0.3	530	1.90		S I30+00N 650W		7	63	<0.2	480	2.30
S I76N 6+50W		85	123	0.2	640	2.10		S I30+00N 700W		16	73	<0.2	520	2.90
S I76N 7+00W		123	165	0.2	640	2.35		S I30+00N 750W		16	65	<0.2	230	2.45
S I76N 7+50W		57	97	0.6	315	2.45		S I30+00N 800W		16	52	<0.2	240	2.20
S I76N 8+00W		46	91	0.4	240	2.60		S I30+00N 850W		13	52	<0.2	150	2.45
S I76N 8+50W		95	103	0.5	485	2.70		S I30+00N 900W		16	66	0.2	360	2.20
S I76N 9+00W		40	105	0.3	325	2.30		S I30+00N 950W		8	40	0.2	600	1.10
S I76N 9+50W		62	101	0.2	310	2.20		S I30+00N 1000W		10	74	<0.2	540	2.15
S I76N 10+00W		55	149	<0.2	190	2.25		S I30+00N 1050W		23	57	<0.2	135	1.85
S I76N 10+50W		52	77	0.2	240	2.00		S I30+00N 1100W		19	72	<0.2	275	2.65
S I76N 11+00W		57	143	0.2	210	2.40		S I30+00N 1150W		22	79	<0.2	370	2.20
S I76N 11+50W		59	149	<0.2	445	2.60		S I30+00N 1200W		25	83	0.2	210	2.10
S I76N 12+00W		65	54	0.5	665	1.70		S I30+00N 1250W		16	82	<0.2	550	1.85
S I76N 12+50W		84	162	0.3	1000	1.80		S I30+00N 1300W		20	61	<0.2	200	2.05

Bondar-Clegg & Company Ltd.  
130 Pemberton Ave.  
North Vancouver, B.C.  
Canada V7P 2R5  
Phone: (604) 985-0681  
Telex: 04-352667



# BONDAR-CLEGG

Geochemical  
Lab Report

REPORT: 124-2909

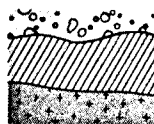
PROJECT: TIM

PAGE 2

SAMPLE NUMBER	ELEMENT UNITS	Pb PPM	Zn PPM	Ag PPM	Mn PPM	Fe PCT	NOTE	SAMPLE NUMBER	ELEMENT UNITS	Pb PPM	Zn PPM	Ag PPM	Mn PPM	Fe PCT	NOTE
S T30+00N 1350W		12	68	0.2	205	1.95		S T3400N 750W		23	70	<0.2	180	2.05	
S T30+00N 1400W		20	93	<0.2	510	2.45		S T3400N 800W		13	69	<0.2	240	2.05	
S T30+00N 1450W		21	96	<0.2	660	2.45		S T3400N 850W		20	70	<0.2	260	2.05	
S T30+00N 1500W		17	85	<0.2	310	3.50		S T3400N 900W		16	60	<0.2	245	2.30	
S T30+00N 1550W		18	63	<0.2	740	1.95		S T3400N 950W		17	67	<0.2	1000	2.70	
S T30+00N 1600W		13	63	<0.2	125	1.75		S T3400N 1000W		14	66	<0.2	385	2.25	
S T30+00N 1650W		23	81	<0.2	290	2.20		S T3400N 1100W		14	70	<0.2	480	2.95	
S T30+00N 1700W		13	67	<0.2	190	2.45		S T3400N 1150W		11	78	<0.2	1300	3.00	
S T30+00N 1750W		11	39	<0.2	85	1.55		S T3400N 1250W		19	51	<0.2	560	3.50	
S T30+00N 1800W		21	82	0.2	180	2.20		S T3400N 1300W		23	70	<0.2	255	2.50	
S T30+00N 1850W		28	155	<0.2	740	2.65		S T3400N 1350W		17	96	<0.2	540	2.25	
S T30+00N 1900W		25	148	<0.2	240	2.60		S T3400N 1400W		25	126	0.4	810	3.30	
S T30+00N 1950W		17	106	<0.2	180	2.45		S T3400N 1450W		16	88	<0.2	630	2.45	
S T30+00N 2000W		27	182	<0.2	690	2.90		S T3400N 1500W		24	59	<0.2	180	2.00	
S T3200N 1500W		20	37	<0.2	80	1.30		S T3400N 1550W		20	79	<0.2	230	2.10	
S T3200N 1550W		15	62	<0.2	190	1.85		S T3400N 1600W		13	67	<0.2	135	2.35	
S T3200N 1600W		36	80	<0.2	230	1.50		S T3400N 1650W		25	72	<0.2	180	2.45	
S T3200N 1650W		37	112	0.2	1000	3.00		S T3400N 1700W		16	74	<0.2	240	1.75	
S T3200N 1700W		20	62	<0.2	130	2.15		S T3400N 1750W		17	119	<0.2	740	2.25	
S T3200N 1750W		19	65	<0.2	200	2.00		S T3400N 1800W		20	68	<0.2	170	2.70	
S T3200N 1800W		20	65	<0.2	130	2.40		S T3400N 1850W		21	101	<0.2	1000	2.45	
S T3200N 1850W		10	66	<0.2	110	1.75		S T3400N 1900W		20	70	<0.2	270	1.55	
S T3200N 1900W		11	35	<0.2	65	1.10		S T3400N 1950W		10	36	<0.2	120	1.05	
S T3200N 1950W		10	43	<0.2	100	1.70		S T3400N 2000W		29	94	<0.2	200	2.10	
S T3200N 2000W		10	70	<0.2	130	1.70		S T3600N 00W		46	122	<0.2	495	2.70	
S T3400N 0W		41	78	<0.2	345	3.20		S T3600N 50W		35	79	<0.2	460	2.50	
S T3400N 50W		36	64	0.2	220	2.75		S T3600N 100W		26	99	<0.2	370	2.30	
S T3400N 100W		30	82	<0.2	345	2.55		S T3600N 150W		33	77	<0.2	385	2.80	
S T3400N 150W		56	136	<0.2	370	2.95		S T3600N 200W		72	141	<0.2	600	2.75	
S T3400N 200W		33	119	<0.2	220	3.00		S T3600N 250W		33	126	<0.2	830	2.65	
S T3400N 250W		29	93	<0.2	390	2.60		S T3600N 300W		30	116	<0.2	135	1.80	
S T3400N 300W		33	93	<0.2	470	2.95		S T3600N 350W		28	112	<0.2	265	2.60	
S T3400N 350W		27	89	<0.2	385	3.05		S T3600N 400W		26	99	<0.2	265	2.65	
S T3400N 400W		27	81	<0.2	315	2.50		S T3600N 450W		29	129	<0.2	370	2.30	
S T3400N 450W		24	97	<0.2	480	2.25		S T3600N 500W		31	125	<0.2	240	2.55	
S T3400N 500W		25	78	<0.2	230	2.80		S T3600N 550W		30	115	<0.2	165	2.20	
S T3400N 550W		14	56	<0.2	255	2.45		S T3600N 600W		35	78	<0.2	220	2.00	
S T3400N 600W		18	65	<0.2	610	2.40		S T3600N 650W		30	100	<0.2	190	2.45	
S T3400N 650W		21	77	<0.2	280	2.50		S T3600N 700W		22	105	<0.2	280	1.95	
S T3400N 700W		13	59	<0.2	300	2.50		S T3600N 750W		23	78	<0.2	280	2.70	



Bondar-Clegg & Company Ltd.  
 130 Pemberton Ave.  
 North Vancouver, B.C.  
 Canada V7P 2R5  
 Phone: (604) 985-0681  
 Telex: 04-352667



# BONDAR-CLEGG

Geochemical  
 Lab Report

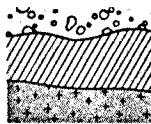
REPORT: 124-2930

PROJECT: TIM

PAGE 1

SAMPLE NUMBER	ELEMENT UNITS	Pb PPM	Zn PPM	Ag PPM	Mn PPM	Fe PCT	NOTE	SAMPLE NUMBER	ELEMENT UNITS	Pb PPM	Zn PPM	Ag PPM	Mn PPM	Fe PCT	NO
S T3200N-00W		42	143	<0.2	760	3.00		S T4000N-500W		15	53	<0.2	1200	1.90	
S T3200N-50W		32	60	<0.2	230	2.80		S T4000N-550W		27	101	<0.2	720	3.50	
S T3200N-100W		26	62	<0.2	175	2.80		S T4000N-600W		13	59	0.2	430	2.20	
S T3200N-150W		38	87	<0.2	635	2.95		S T4000N-650W		23	86	<0.2	755	2.55	
S T3200N-200W		26	88	<0.2	870	2.50		S T4000N-700W		14	69	<0.2	190	2.30	
S T3200N-250W		28	103	<0.2	640	2.45		S T4000N-750W		14	82	<0.2	400	2.50	
S T3200N-300W		18	78	<0.2	1200	2.25		S T4000N-800W		12	71	<0.2	245	2.20	
S T3200N-350W		19	54	<0.2	440	2.60		S T4000N-850W		13	76	<0.2	840	2.50	
S T3200N-400W		24	87	<0.2	390	2.20		S T4000N-900W		16	87	<0.2	460	2.55	
S T3200N-450W		20	74	<0.2	450	2.35		S T4000N-950W		20	77	<0.2	228	2.30	
S T3200N-500W		30	87	<0.2	580	2.10		S T4000N-1000W		13	75	<0.2	280	2.15	
S T3200N-550W		24	56	<0.2	1600	2.50		S T4000N-1050W		14	82	<0.2	315	2.45	
S T3200N-600W		12	37	0.2	3200	0.95		S T4000N-1100W		14	96	0.4	1400	2.60	
S T3200N-650W		11	38	<0.2	1800	1.10		S T4000N-1150W		14	102	<0.2	530	2.75	
S T3200N-700W		15	64	0.2	1750	3.25		S T4000N-1200W		14	102	<0.2	1200	2.75	
S T3200N-750W		16	110	0.2	2500	2.55		S T4000N-1250W		20	105	<0.2	765	2.75	
S T3200N-800W		24	80	<0.2	540	1.75		S T4000N-1300W		24	143	0.2	1400	2.70	
S T3200N-850W		6	16	<0.2	120	0.50		S T4000N-1350W		18	100	0.3	50	2.50	
S T3200N-900W		14	63	0.2	820	1.80		S T4200N-0W		36	164	0.2	290	2.90	
S T3200N-950W		22	78	<0.2	585	2.05		S T4200N-50W		23	142	0.2	600	2.65	
S T3200N-1000W		21	74	<0.2	440	1.80		S T4200N-100W		37	137	<0.2	1700	2.60	
S T3200N-1050W		22	73	<0.2	330	1.85		S T4200N-150W		46	80	<0.2	270	2.20	
S T3200N-1100W		9	24	0.2	175	0.55		S T4200N-200W		15	65	<0.2	258	1.85	
S T3200N-1150W		15	80	<0.2	550	2.55		S T4200N-250W		20	72	<0.2	130	2.70	
S T3200N-1200W		24	71	<0.2	170	1.85		S T4200N-300W		36	163	<0.2	332	2.80	
S T3200N-1250W		23	65	<0.2	150	1.60		S T4200N-350W		31	113	<0.2	530	2.30	
S T3200N-1300W		25	94	<0.2	240	1.80		S T4200N-400W		37	123	<0.2	580	3.00	
S T3200N-1350W		38	99	<0.2	1600	1.80		S T4200N-450W		34	89	<0.2	490	3.25	
S T3200N-1400W		15	75	<0.2	170	1.70		S T4200N-500W		41	82	<0.2	375	3.05	
S T3200N-1450W		21	48	0.2	140	1.90		S T4200N-550W		39	98	<0.2	295	2.45	
S T4000N-00W		11	28	0.3	1000	0.90		S T4200N-600W		38	107	<0.2	615	2.80	
S T4000N-50W		23	112	<0.2	347	2.50		S T4200N-650W		33	99	<0.2	330	2.70	
S T4000N-100W		31	82	<0.2	375	2.45		S T4200N-700W		27	130	<0.2	465	2.65	
S T4000N-150W		20	60	<0.2	128	2.30		S T4200N-750W		44	125	<0.2	590	3.05	
S T4000N-200W		53	147	<0.2	330	3.30		S T4200N-800W		33	110	<0.2	280	2.65	
S T4000N-250W		30	105	<0.2	265	2.50		S T4200N-850W		21	119	<0.2	515	2.70	
S T4000N-300W		14	94	<0.2	1900	2.55		S T4200N-900W		29	121	<0.2	1000	2.90	
S T4000N-350W		2	66	0.2	700	2.05		S T4200N-950W		38	100	<0.2	650	2.55	
S T4000N-400W		6	26	<0.2	420	0.60		S T4200N-1000W		32	107	<0.2	585	2.55	
S T4000N-450W		13	59	<0.2	470	1.80		S T4200N-1050W		38	106	0.2	340	2.80	

Bondar-Clegg &amp; Company Ltd.

130 Pemberton Ave.  
North Vancouver, B.C.  
Canada V7P 2R5  
Phone: (604) 985-0681  
Telex: 04-352667**BONDAR-CLEGG****Geochemical  
Lab Report**

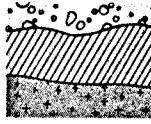
REPORT: 124-2930

PROJECT: TIM

PAGE 2

SAMPLE NUMBER	ELEMENT UNITS	Pb PPM	Zn PPM	Ag PPM	Mn PPM	Fe PCT	NOTE	SAMPLE NUMBER	ELEMENT UNITS	Pb PPM	Zn PPM	Ag PPM	Mn PPM	Fe PCT	NOTE
S T4200N-1100W		27	99	<0.2	450	2.70		S T4400N-1800W		16	115	<0.2	200	3.10	
S T4200N-1150W		33	120	0.5	1400	3.15		S T4400N-1850W		17	75	<0.2	265	2.30	
S T4200N-1200W		38	108	<0.2	415	2.55		S T4400N-1900W		14	78	0.4	345	2.75	
S T4200N-1250W		23	91	0.3	420	2.70		S T4400N-1950W		20	144	0.3	370	2.35	
S T4200N-1300W		22	71	<0.2	380	2.80		S T4400N-2000W		27	106	<0.2	245	3.15	
S T4200N-1350W		28	174	0.6	635	2.65		S T7200N-0W		49	123	<0.2	470	2.40	
S T4200N-1400W		17	117	<0.2	810	2.45		S T7200N-50W		47	105	<0.2	155	1.85	
S T4200N-1450W		18	87	<0.2	290	2.15		S T7200N-100W		104	143	1.1	740	3.20	
S T4200N-1500W		18	67	0.2	240	2.10		S T7200N-150W		62	111	<0.2	220	2.80	
S T4200N-1550W		19	69	<0.2	310	2.30		S T7200N-200W		34	111	<0.2	200	1.90	
S T4200N-1600W		16	74	0.2	370	2.85		S T7200N-250W		44	106	<0.2	212	2.60	
S T4200N-1650W		16	107	<0.2	340	2.60		S T7200N-300W		31	91	<0.2	150	1.90	
S T4200N-1700W		16	95	<0.2	320	2.65		S T7200N-350W		58	105	<0.2	320	2.70	
S T4200N-1750W		18	99	<0.2	257	2.10		S T7200N-400W		60	89	1.0	1000	4.90	
S T4200N-1800W		17	65	0.2	295	2.65		S T7200N-450W		63	102	0.7	780	3.25	
S T4200N-1850W		25	117	0.2	820	2.45		S T7200N-500W		38	57	<0.2	225	1.70	
S T4200N-1900W		25	101	<0.2	385	2.30		S T7200N-550W		75	73	0.2	680	2.45	
S T4200N-1950W		27	133	0.2	700	2.20		S T7200N-600W		57	41	0.4	915	1.30	
S T4200N-2000W		24	115	0.2	1200	2.65		S T7200N-700W		73	84	0.4	530	2.20	
S T4400N-750W		79	168	0.2	560	2.70		S T7400N-00W		76	92	<0.2	280	2.35	
S T4400N-800W		43	118	<0.2	420	2.65		S T7400N-50W		74	110	0.4	300	2.60	
S T4400N-850W		75	108	<0.2	210	3.00		S T7400N-100W		91	104	0.2	435	2.60	
S T4400N-900W		50	145	<0.2	420	2.80		S T7400N-150W		40	130	0.4	345	2.70	
S T4400N-950W		44	129	<0.2	440	2.65		S T7400N-200W		117	126	0.7	370	2.45	
S T4400N-1000W		69	115	0.4	550	3.00		S T7400N-250W		123	147	0.3	500	2.45	
S T4400N-1050W		50	175	<0.2	505	2.75		S T7400N-300W		135	144	0.4	330	2.90	
S T4400N-1100W		58	163	0.4	800	2.75		S T7400N-350W		147	135	0.4	540	2.70	
S T4400N-1150W		52	148	<0.2	380	2.75		S T7400N-400W		125	135	0.4	480	2.60	
S T4400N-1200W		44	114	0.3	460	2.55		S T7400N-450W		120	107	0.8	385	2.85	
S T4400N-1250W		65	135	<0.2	358	2.35		S T7400N-500W		133	164	0.2	810	3.15	
S T4400N-1300W		61	122	0.2	300	2.60		S T7400N-550W		128	133	0.2	1600	2.60	
S T4400N-1350W		45	194	0.9	395	2.55		S T7400N-650W		136	126	0.6	1000	2.70	
S T4400N-1400W		30	106	<0.2	248	2.35		S T7400N-700W		103	94	0.7	770	2.35	
S T4400N-1450W		41	167	<0.2	310	2.80		S T7400N-750W		105	121	0.5	1300	1.95	
S T4400N-1500W		29	102	0.2	430	2.45		S T7400N-800W		150	155	0.3	500	2.45	
S T4400N-1550W		33	109	0.2	680	2.55		S T7400N-850W		164	156	0.5	430	2.05	
S T4400N-1600W		28	127	<0.2	420	2.55		S T7400N-900W		170	172	0.4	770	2.55	
S T4400N-1650W		29	117	<0.2	520	2.90		S T7400N-950W		93	133	0.2	460	2.20	
S T4400N-1700W		17	84	<0.2	445	2.60		S T7400N-1000W		163	169	1.0	380	3.00	
S T4400N-1750W		39	146	<0.2	715	2.55		S T7400N-1050W		64	104	0.7	250	2.20	

Bondar-Clegg & Company Ltd.  
130 Pemberton Ave.  
North Vancouver, B.C.  
Canada V7P 2R5  
Phone: (604) 985-0681  
Telex: 04-352667



**BONDAR-CLEGG**

Geochemic  
Lab Report

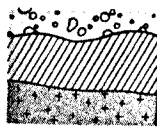
REPORT: 124-2930

PROJECT: TIM

PAGE 3

SAMPLE NUMBER	ELEMENT UNITS	Pb PPM	Zn PPM	Ag PPM	Mn PPM	Fe PCT	NOTES
S T7400N-1100W		94	128	0.4	370	2.45	
S T7400N-1150W		62	93	0.7	630	2.20	
S T7400N-1200W		183	217	0.4	565	2.55	
S T7400N-1250W		107	135	0.6	625	2.55	

Bondar-Clegg &amp; Company Ltd.

130 Pemberton Ave.  
North Vancouver, B.C.  
Canada V7P 2R5  
Phone: (604) 985-0681  
Telex: 04-352667**BONDAR-CLEGG**Geochem  
Lab Rep

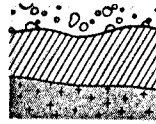
REPORT: 124-2960

PROJECT: IIM

PAGE 1

SAMPLE NUMBER	ELEMENT UNITS	Pb PPM	Zn PPM	Ag PPM	Mn PPM	Fe PCT	NOTE	SAMPLE NUMBER	ELEMENT UNITS	Pb PPM	Zn PPM	Ag PPM	Mn PPM	Fe PCT
S I 4000N 1400W		29	84	0.2	470	2.80		S I 4600N 650W		43	129	<0.2	230	3.25
S I 4000N 1450W		17	80	<0.2	800	2.80		S I 4600N 700W		55	118	0.2	535	2.90
S I 4000N 1500W		24	98	<0.2	670	2.95		S I 4600N 750W		48	100	<0.2	400	3.25
S I 4000N 1550W		16	77	<0.2	520	2.85		S I 4600N 800W		49	123	<0.2	360	2.70
S I 4000N 1600W		20	77	<0.2	330	3.05		S I 4600N 850W		48	137	0.2	750	2.85
S I 4000N 1650W		18	79	<0.2	220	2.35		S I 4600N 900W		53	145	0.3	260	2.55
S I 4000N 1700W		19	89	<0.2	210	3.25		S I 4600N 950W		92	178	0.2	440	3.10
S I 4000N 1750W		24	107	<0.2	240	3.40		S I 4600N 1000W		61	130	0.2	220	2.65
S I 4000N 1800W		17	98	<0.2	230	2.20		S I 4600N 1050W		73	151	0.2	300	2.90
S I 4000N 1850W		22	92	<0.2	340	2.80		S I 4600N 1100W		67	173	0.2	620	3.05
S I 4000N 1900W		16	71	<0.2	290	2.65		S I 4600N 1150W		86	140	<0.2	580	3.05
S I 4000N 1950W		16	102	<0.2	510	2.50		S I 4600N 1200W		46	148	<0.2	460	2.85
S I 4400N 00W		139	167	<0.2	1000	4.00		S I 4600N 1250W		60	120	<0.2	430	2.90
S I 4400N 50W		52	130	0.2	680	3.15		S I 4600N 1300W		48	184	0.4	1150	2.80
S I 4400N 100W		48	111	<0.2	1250	2.70		S I 4600N 1350W		97	304	0.2	440	2.95
S I 4400N 150W		30	126	<0.2	580	2.85		S I 4600N 1400W		167	182	0.2	310	3.10
S I 4400N 200W		32	89	<0.2	500	2.80		S I 4600N 1450W		66	133	<0.2	385	2.70
S I 4400N 250W		34	79	<0.2	450	3.40		S I 4600N 1500W		58	131	<0.2	650	2.90
S I 4400N 300W		40	102	<0.2	390	3.10		S I 4600N 1550W		81	196	0.2	470	2.80
S I 4400N 350W		23	75	<0.2	430	2.55		S I 4600N 1600W		78	366	0.3	860	2.75
S I 4400N 400W		43	133	<0.2	410	2.90		S I 4600N 1650W		71	294	0.2	350	2.80
S I 4400N 450W		35	100	<0.2	280	3.10		S I 4600N 1700W		93	189	<0.2	470	2.95
S I 4400N 500W		32	98	<0.2	290	2.80		S I 4600N 1750W		72	214	<0.2	930	3.10
S I 4400N 550W		23	87	<0.2	410	3.35		S I 4600N 1800W		58	174	0.2	450	2.75
S I 4400N 600W		54	94	<0.2	365	3.25		S I 4600N 1850W		41	173	<0.2	320	2.85
S I 4400N 650W		28	74	<0.2	380	3.40		S I 4600N 1900W		41	113	<0.2	290	2.95
S I 4400N 700W		29	80	0.6	710	1.80		S I 4600N 1950W		36	139	<0.2	630	2.65
S I 4600N 00W		41	114	0.2	600	2.70		S I 4600N 2000W		45	94	<0.2	295	2.25
S I 4600N 50W		54	191	0.2	1100	3.50		S I 6000N 750W		93	199	<0.2	590	3.05
S I 4600N 100W		24	163	<0.2	920	2.70		S I 6000N 800W		65	120	<0.2	210	2.30
S I 4600N 150W		48	104	<0.2	540	2.85		S I 6000N 850W		32	91	<0.2	130	2.00
S I 4600N 200W		65	146	0.2	890	3.50		S I 6000N 900W		68	126	<0.2	290	2.50
S I 4600N 250W		70	134	0.2	390	3.50		S I 6000N 950W		96	121	<0.2	265	2.40
S I 4600N 300W		96	290	0.3	1000	4.20		S I 6000N 1000W		76	185	<0.2	260	2.35
S I 4600N 350W		103	148	<0.2	320	2.50		S I 6000N 1050W		77	122	<0.2	310	2.40
S I 4600N 400W		153	309	0.2	900	3.50		S I 6000N 1100W		83	110	<0.2	230	2.10
S I 4600N 450W		73	130	0.3	700	3.30		S I 6000N 1150W		73	151	<0.2	610	2.30
S I 4600N 500W		60	125	<0.2	420	3.10		S I 6000N 1200W		67	163	<0.2	370	2.10
S I 4600N 550W		44	107	<0.2	240	3.00		S I 6000N 1250W		70	187	0.2	440	2.20
S I 4600N 600W		43	191	<0.2	570	2.90		S I 6000N 1300W		50	143	0.2	430	1.60

Bondar-Clegg &amp; Company Ltd.

130 Pemberton Ave.  
North Vancouver, B.C.  
Canada V7P 2R5  
Phone: (604) 985-0681  
Telex: 04-352667**BONDAR-CLEGG**Geochemic  
Lab Report

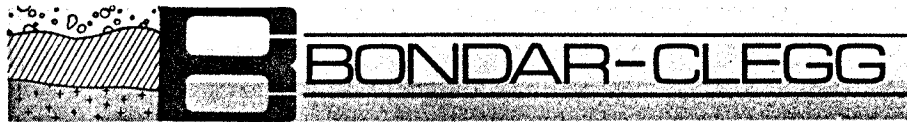
REPORT: 124-2960

PROJECT: TIM

PAGE 2

SAMPLE NUMBER	ELEMENT UNITS	Pb PPM	Zn PPM	Ag PPM	Mn PPM	Fe PCT	NOTE	SAMPLE NUMBER	ELEMENT UNITS	Pb PPM	Zn PPM	Ag PPM	Mn PPM	Fe PCT	NOTE
S T 6000N 1350W		86	113	<0.2	640	2.35		S T 6200N 1600W		117	154	0.2	440	2.40	
S T 6000N 1400W		81	124	<0.2	990	2.60		S T 6200N 1650W		104	205	0.6	2500	2.40	
S T 6000N 1450W		52	124	0.2	650	1.40		S T 6200N 1700W		210	118	0.6	440	1.70	
S T 6000N 1500W		10	28	<0.2	200	0.40		S T 6200N 1750W		90	112	0.6	360	1.85	
S T 6000N 1550W		70	120	<0.2	370	2.25		S T 6200N 1800W		131	112	0.5	290	1.85	
S T 6000N 1600W		79	102	<0.2	550	2.40		S T 6200N 1850W		122	145	0.4	450	1.90	
S T 6000N 1650W		71	124	<0.2	415	2.20		S T 6200N 1900W		158	131	0.2	410	1.95	
S T 6000N 1700W		74	120	0.2	415	2.00		S T 6200N 1950W		75	87	0.3	600	1.60	
S T 6000N 1750W		104	168	0.2	500	2.60		S T 6200N 2000W		108	109	0.2	535	1.85	
S T 6000N 1800W		78	176	<0.2	610	1.80		S T 7000N 500W		234	102	0.4	290	2.75	
S T 6000N 1850W		84	190	<0.2	620	2.25		S T 7000N 550W		279	125	0.6	530	2.80	
S T 6000N 1900W		14	46	<0.2	330	0.60		S T 7000N 600W		245	152	2.0	700	2.80	
S T 6000N 1950W		57	114	0.2	225	2.30		S T 7000N 650W		319	126	1.4	640	2.65	
S T 6000N 2000W		153	223	0.4	950	2.65		S T 7000N 700W		405	175	0.7	350	2.75	
S T 6200N 300W		40	165	<0.2	800	2.10		S T 7000N 750W		69	94	<0.2	290	3.30	
S T 6200N 350W		46	117	<0.2	410	2.30		S T 7000N 800W		101	107	<0.2	215	3.15	
S T 6200N 400W		51	120	<0.2	250	2.60		S T 7000N 850W		55	97	<0.2	210	2.65	
S T 6200N 450W		14	141	<0.2	570	3.20		S T 7000N 900W		49	95	<0.2	230	2.40	
S T 6200N 500W		142	159	<0.2	1100	3.30		S T 7000N 950W		70	88	<0.2	190	2.80	
S T 6200N 550W		144	201	0.4	1600	3.40		S T 7000N 1000W		59	97	<0.2	260	2.55	
S T 6200N 600W		141	192	0.3	1400	3.05		S T 7000N 1050W		50	87	<0.2	165	2.30	
S T 6200N 650W		70	125	0.2	330	2.70		S T 7000N 1100W		52	105	<0.2	195	2.40	
S T 6200N 700W		106	117	0.3	155	1.60		S T 7000N 1150W		60	76	<0.2	190	2.20	
S T 6200N 750W		60	94	<0.2	500	2.65		S T 7000N 1200W		104	191	<0.2	260	2.80	
S T 6200N 800W		81	100	<0.2	405	2.55		S T 7000N 1250W		234	235	0.5	1300	4.30	
S T 6200N 850W		118	142	<0.2	1200	2.40		S T 7000N 1300W		24	58	<0.2	205	1.50	
S T 6200N 900W		104	119	0.2	230	2.40		S T 7000N 1350W		57	202	<0.2	280	2.20	
S T 6200N 950W		121	155	<0.2	430	2.10		S T 7000N 1400W		55	106	<0.2	290	2.50	
S T 6200N 1000W		87	130	0.2	420	2.60		S T 7000N 1450W		55	123	0.2	205	3.00	
S T 6200N 1050W		117	154	0.6	310	2.65		S T 7000N 1500W		44	162	0.4	300	1.95	
S T 6200N 1100W		213	269	0.2	610	2.90		S T 7000N 1550W		40	108	<0.2	200	3.15	
S T 6200N 1150W		103	178	0.8	700	3.10		S T 7000N 1600W		95	134	<0.2	210	2.80	
S T 6200N 1200W		76	106	<0.2	105	2.20		S T 7000N 1650W		158	142	0.2	225	3.30	
S T 6200N 1250W		87	158	<0.2	310	2.50		S T 7000N 1700W		88	149	0.6	420	2.95	
S T 6200N 1300W		93	122	<0.2	460	2.20		S T 7000N 1750W		47	92	<0.2	200	3.35	
S T 6200N 1350W		117	184	0.4	970	2.70		S T 7000N 1800W		130	179	0.4	340	3.00	
S T 6200N 1400W		76	112	<0.2	230	1.85		S T 7000N 1850W		67	315	0.4	550	2.50	
S T 6200N 1450W		120	157	<0.2	190	3.00		S T 7000N 1900W		236	232	1.1	630	3.80	
S T 6200N 1500W		104	158	<0.2	1300	2.40		S T 7000N 1950W		190	210	1.0	470	3.70	
S T 6200N 1550W		158	165	0.5	450	3.20		S T 7000N 2000W		91	195	0.3	860	2.90	

Bondar-Clegg & Company Ltd.  
 130 Pemberton Ave.  
 North Vancouver, B.C.  
 Canada V7P 2R5  
 Phone: (604) 985-0681  
 Telex: 04-352667



Geochemical  
 Lab Report

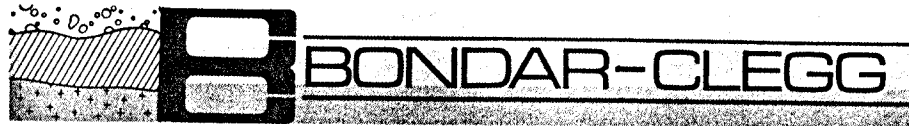
REPORT: 124-2960

PROJECT: TIM

PAGE 3

SAMPLE NUMBER	ELEMENT UNITS	Pb PPM	Zn PPM	Ag PPM	Mn PPM	Fe PCT	NOTES
S I 7200N 750W		87	135	0.4	420	3.00	
S I 7200N 800W		129	134	0.7	720	2.70	
S I 7200N 850W		329	212	0.9	810	3.40	
S I 7200N 900W		213	157	0.6	490	3.00	
S I 7200N 950W		29	96	<0.2	210	2.45	
S I 7200N 1000W		105	133	0.8	1000	3.05	
S I 7200N 1050W		219	197	1.4	470	2.65	
S I 7200N 1100W		174	174	0.8	780	2.15	
S I 7200N 1150W		306	158	1.0	570	3.20	
S I 7200N 1200W		283	168	0.5	490	3.20	
S I 7200N 1250W		186	123	1.2	380	3.10	
S I 7200N 1300W		71	140	0.9	260	2.15	
S I 7200N 1350W		95	106	0.4	225	3.05	
S I 7200N 1400W		163	125	0.2	155	2.50	
S I 7200N 1450W		96	121	0.4	260	2.50	
S I 7200N 1500W		54	135	0.6	480	2.55	
S I 7200N 1550W		57	74	<0.2	300	1.75	
S I 7200N 1600W		61	95	<0.2	170	2.00	
S I 7200N 1650W		158	130	0.3	280	2.90	
S I 7200N 1700W		94	109	<0.2	190	2.45	
S I 7200N 1750W		35	69	<0.2	180	2.25	
S I 7200N 1800W		63	228	0.4	650	3.10	
S I 7200N 1850W		167	153	<0.2	350	2.75	
S I 7200N 1900W		186	209	0.2	450	2.95	
S I 7200N 1950W		163	159	1.1	1050	3.35	
S I 7200N 2000W		63	149	0.2	300	2.60	
PREFIX T 20+00W							
S 79+85N SILT		43	79	<0.2	480	1.65	
S TM 099-1SS		115	150	0.4	450	1.75	
S TM 099-2SS		352	480	0.7	690	3.05	
R TM109-1R		5	7	0.4	240	0.55	
R TM109-2R		8	26	0.3	200	1.00	

Bondar-Clegg & Company Ltd.  
 130 Pemberton Ave.  
 North Vancouver, B.C.  
 Canada V7P 2R5  
 Phone: (604) 985-0681  
 Telex: 04-352667



Geochemical  
 Lab Report

REPORT: 124-2961

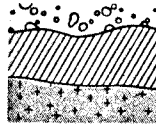
PROJECT: TIM

PAGE 1

SAMPLE NUMBER	ELEMENT UNITS	Pb PPM	Zn PPM	Ag PPM	Mn PPM	Fe PCT	NOTE	SAMPLE NUMBER	ELEMENT UNITS	Pb PPM	Zn PPM	Ag PPM	Mn PPM	Fe PCT
S T 4800N 00W		41	99	<0.2	240	3.05		S T 4800N 2000W		77	142	<0.2	420	2.80
S T 4800N 50W		87	127	<0.2	1100	2.80		S T 5000N 300W		74	144	<0.2	920	2.80
S T 4800N 100W		73	85	<0.2	350	3.00		S T 5000N 350W		32	141	<0.2	440	2.65
S T 4800N 150W		46	117	<0.2	200	2.50		S T 5000N 400W		41	111	<0.2	250	2.00
S T 4800N 200W		78	100	0.2	350	2.70		S T 5000N 450W		111	178	0.6	960	2.30
S T 4800N 250W		83	121	<0.2	820	3.05		S T 5000N 500W		215	196	0.4	1200	3.95
S T 4800N 300W		122	170	<0.2	950	3.40		S T 5000N 550W		57	159	0.2	290	2.55
S T 4800N 350W		129	237	1.7	3300	6.00		S T 5000N 600W		86	236	<0.2	600	2.80
S T 4800N 400W		156	177	<0.2	570	2.90		S T 5000N 650W		68	262	0.5	750	3.10
S T 4800N 450W		177	179	0.2	1000	3.45		S T 5000N 700W		139	161	0.4	1500	4.80
S T 4800N 500W		182	213	<0.2	1200	3.65		S T 5000N 750W		114	146	0.5	680	3.30
S T 4800N 550W		81	211	0.3	470	3.20		S T 5000N 800W		55	197	0.2	620	2.75
S T 4800N 600W		73	125	<0.2	290	2.95		S T 5000N 850W		90	207	0.9	590	3.20
S T 4800N 650W		141	190	0.2	650	3.90		S T 5000N 900W		244	311	0.2	1050	4.60
S T 4800N 700W		57	135	<0.2	315	2.85		S T 5000N 950W		46	203	<0.2	540	3.00
S T 4800N 750W		134	188	0.2	1000	3.80		S T 5000N 1000W		128	237	0.4	650	3.80
S T 4800N 800W		112	225	<0.2	470	3.70		S T 5000N 1050W		153	246	0.4	590	3.90
S T 4800N 850W		72	135	<0.2	370	3.05		S T 5000N 1100W		116	233	0.4	420	3.65
S T 4800N 900W		113	148	<0.2	630	3.75		S T 5000N 1150W		153	311	0.2	430	3.80
S T 4800N 950W		93	123	<0.2	650	4.00		S T 5000N 1200W		109	185	0.2	350	3.40
S T 4800N 1000W		50	100	0.2	260	3.20		S T 5000N 1250W		137	157	<0.2	540	3.85
S T 4800N 1050W		57	171	0.2	720	2.95		S T 5000N 1300W		164	203	0.4	1000	4.00
S T 4800N 1100W		70	222	<0.2	350	2.85		S T 5000N 1350W		91	200	0.5	900	3.05
S T 4800N 1150W		82	170	<0.2	420	3.55		S T 5000N 1400W		259	270	0.3	485	3.65
S T 4800N 1200W		84	126	<0.2	310	3.30		S T 5000N 1450W		131	192	<0.2	510	3.10
S T 4800N 1250W		45	118	0.3	220	2.80		S T 5000N 1500W		136	174	0.4	390	1.95
S T 4800N 1300W		101	181	0.3	510	3.20		S T 5000N 1550W		143	236	0.4	1150	3.35
S T 4800N 1350W		155	189	0.2	590	3.80		S T 5000N 1600W		255	291	0.2	990	3.90
S T 4800N 1400W		104	148	0.4	870	2.60		S T 5000N 1650W		191	237	<0.2	860	3.55
S T 4800N 1450W		126	189	<0.2	1000	3.10		S T 5000N 1700W		204	267	<0.2	1350	3.20
S T 4800N 1500W		110	218	0.4	330	3.00		S T 5000N 1750W		320	256	0.4	1000	3.30
S T 4800N 1550W		196	211	0.8	380	3.20		S T 5000N 1800W		226	293	0.2	930	3.30
S T 4800N 1600W		177	229	<0.2	520	3.15		S T 5000N 1850W		231	309	0.2	860	3.45
S T 4800N 1650W		200	184	<0.2	270	3.15		S T 5000N 1900W		217	220	<0.2	310	3.25
S T 4800N 1700W		223	245	0.4	440	3.50		S T 5000N 1950W		229	268	<0.2	750	3.30
S T 4800N 1750W		91	187	0.4	620	3.55		S T 5000N 2000W		100	220	0.2	520	2.90
S T 4800N 1800W		63	121	<0.2	250	2.50		S T 6200N 00W		46	109	<0.2	1400	2.65
S T 4800N 1850W		101	197	<0.2	720	2.70		S T 6200N 50W		49	112	0.2	1200	2.60
S T 4800N 1900W		86	184	<0.2	300	2.80		S T 6200N 100W		61	89	<0.2	620	2.80
S T 4800N 1950W		92	146	<0.2	240	2.70		S T 6200N 150W		69	159	0.2	2000	2.90



Bondar-Clegg & Company Ltd.  
 130 Pemberton Ave.  
 North Vancouver, B.C.  
 Canada V7P 2R5  
 Phone: (604) 985-0681  
 Telex: 04-352667



# BONDAR-CLEGG

Geochemical  
 Lab Report

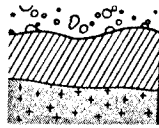
REPORT: 124-3032

PROJECT: TIM

PAGE 1

SAMPLE NUMBER	ELEMENT UNITS	Ag PPM	Pb PPM	Zn PPM	Mn PPM	Fe PCT	NOTE	SAMPLE NUMBER	ELEMENT UNITS	Ag PPM	Pb PPM	Zn PPM	Mn PPM	Fe PCT	NOTE
S 5000N 00W		<0.2	23	80	140	2.50		S 5200N 1700W		<0.2	202	312	1200	3.75	
S 5000N 50W		<0.2	57	123	690	4.40		S 5200N 1750W		<0.2	138	430	2200	4.50	
S 5000N 100W		0.6	70	248	1200	3.10		S 5200N 1800W		0.9	230	290	640	1.70	
S 5000N 150W		0.2	119	156	620	2.80		S 5200N 1850W		0.2	147	203	935	2.10	
S 5000N 200W		<0.2	67	90	290	3.10		S 5200N 1900W		0.5	145	252	880	2.65	
S 5000N 250W		<0.2	79	144	450	3.25		S 5200N 1950W		0.3	189	400	1600	3.10	
S 5200N 00W		<0.2	47	88	180	2.65		S 5200N 2000W		<0.2	180	228	1200	2.95	
S 5200N 50W		<0.2	23	92	210	2.45		S 5400N 1400W		0.7	83	260	1100	2.30	
S 5200N 100W		<0.2	33	78	137	2.30		S 5400N 1450W		0.9	291	336	1600	3.60	
S 5200N 150W		0.6	61	150	710	2.90		S 5400N 1500W		0.8	198	400	1000	3.70	
S 5200N 200W		0.2	42	94	420	2.70		S 5400N 1550W		1.0	397	580	1600	2.55	
S 5200N 250W		<0.2	37	118	301	2.10		S 5400N 1600W		2.2	396	1030	1800	4.70	
S 5200N 300W		<0.2	57	180	322	2.70		S 5400N 1650W		2.0	166	600	1400	4.80	
S 5200N 350W		0.3	42	104	230	2.30		S 5400N 1700W		2.0	207	660	2300	7.00	
S 5200N 400W		<0.2	59	167	450	3.20		S 5400N 1750W		0.6	289	500	740	4.00	
S 5200N 450W		<0.2	59	262	505	2.90		S 5400N 1800W		2.6	370	650	1200	4.40	
S 5200N 500W		<0.2	45	102	230	2.30		S 5400N 1850W		<0.2	80	292	680	4.40	
S 5200N 550W		0.4	38	224	340	2.70		S 5400N 1900W		1.4	298	374	1400	2.10	
S 5200N 600W		0.4	214	184	3400	5.00		S 5400N 1950W		0.4	266	336	1200	4.40	
S 5200N 650W		1.6	83	204	1000	4.00		S 6400N 500W		<0.2	31	109	1400	3.95	
S 5200N 700W		0.2	111	274	355	2.40		S 6400N 550W		<0.2	55	132	660	2.35	
S 5200N 750W		0.5	90	164	330	2.20		S 6400N 600W		<0.2	130	182	860	3.30	
S 5200N 800W		1.7	80	400	1300	3.60		S 6400N 650W		<0.2	66	130	815	2.60	
S 5200N 850W		0.5	312	398	1300	3.95		S 6400N 700W		<0.2	56	109	720	3.10	
S 5200N 900W		0.2	157	330	930	3.55		S 6400N 750W		<0.2	31	146	795	2.70	
S 5200N 950W		0.5	98	156	1000	6.00		S 6400N 800W		0.6	97	207	2000	3.25	
S 5200N 1000W		0.5	367	368	1600	4.00		S 6400N 850W		0.4	95	192	900	3.25	
S 5200N 1050W		1.1	250	360	4200	4.60		S 6400N 900W		0.8	51	150	2200	3.30	
S 5200N 1100W		0.8	124	324	905	4.40		S 6400N 950W		0.2	78	165	490	4.00	
S 5200N 1150W		0.6	164	228	375	3.20		S 6400N 1000W		0.6	91	180	1850	3.15	
S 5200N 1200W		1.3	79	240	1100	2.10		S 6400N 1050W		0.2	52	150	420	3.05	
S 5200N 1250W		1.2	262	515	2100	5.00		S 6400N 1100W		0.2	78	148	490	3.20	
S 5200N 1300W		1.4	158	480	880	3.60		S 6400N 1150W		<0.2	118	142	490	3.60	
S 5200N 1350W		2.2	344	680	1200	4.40		S 6400N 1200W		0.2	164	208	490	3.80	
S 5200N 1400W		1.3	224	435	800	4.20		S 6400N 1250W		<0.2	88	156	950	2.80	
S 5200N 1450W		0.8	87	166	238	2.80		S 6400N 1300W		<0.2	253	378	860	3.80	
S 5200N 1500W		0.7	71	152	252	2.70		S 6400N 1350W		<0.2	46	111	200	3.20	
S 5200N 1550W		0.6	170	400	1200	4.00		S 6400N 1400W		<0.2	82	156	295	2.85	
S 5200N 1600W		<0.2	126	233	650	4.00		S 6400N 1450W		<0.2	142	147	285	3.45	
S 5200N 1650W		0.5	146	224	1000	1.95		S 6400N 1500W		<0.2	162	206	1600	3.00	

Bondar-Clegg & Company Ltd.  
 130 Pemberton Ave.  
 North Vancouver, B.C.  
 Canada V7P 2R5  
 Phone: (604) 985-0681  
 Telex: 04-352667



# BONDAR-CLEGG

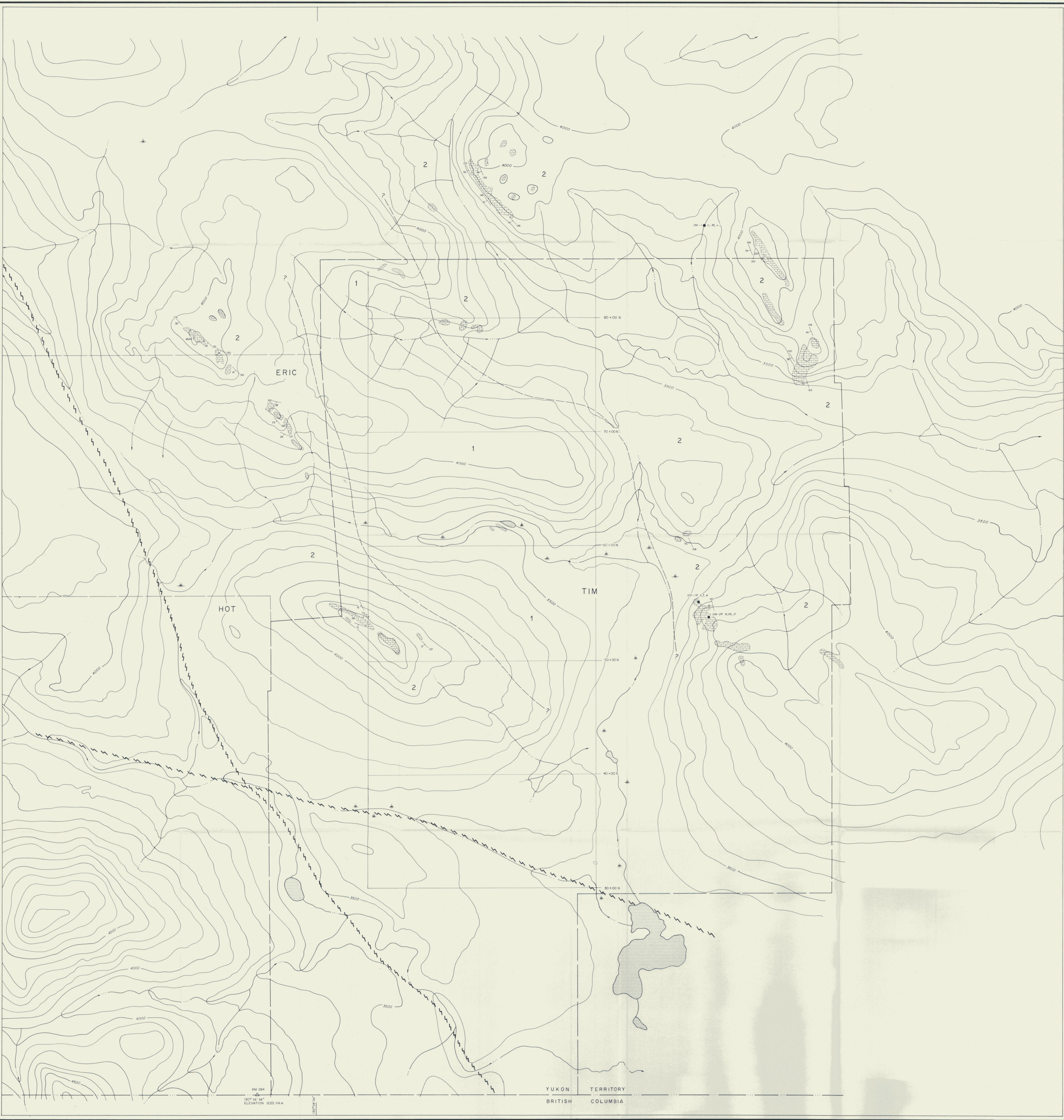
Geochemical  
 Lab Report

REPORT: 124-3032

PROJECT: TIM

PAGE 2

SAMPLE NUMBER	ELEMENT UNITS	Ag PPM	Pb PPM	Zn PPM	Mn PPM	Fe PCT	NOTE	SAMPLE NUMBER	ELEMENT UNITS	Ag PPM	Pb PPM	Zn PPM	Mn PPM	Fe PCT
S 6400N 1550W		<0.2	55	160	1100	2.00		S 8000N 450W		0.2	19	40	180	2.20
S 6400N 1600W		<0.2	151	116	240	2.75		S 8000N 500W		<0.2	17	44	135	2.55
S 6400N 1650W		<0.2	101	150	1100	3.10		S 8000N 550W		<0.2	24	76	205	2.90
S 6400N 1700W		0.4	178	171	1000	3.20		S 8000N 600W		<0.2	17	50	240	2.10
S 6400N 1750W		0.3	294	265	1100	3.25		S 8000N 650W		<0.2	22	67	340	2.10
S 6400N 1800W		0.6	277	290	520	3.15		S 8000N 700W		<0.2	26	66	180	2.55
S 6400N 1850W		0.4	196	234	1100	3.35		S 8000N 750W		<0.2	39	64	153	2.60
S 6400N 1900W		0.3	169	288	880	2.35		S 8000N 800W		<0.2	25	61	490	2.85
S 6400N 1950W		0.2	164	132	850	2.80		S 8000N 850W		<0.2	40	44	212	2.60
S 6400N 2000W		0.2	216	176	1300	3.00		S 8000N 900W		<0.2	29	63	150	2.75
S 6600N 00W		<0.2	55	91	430	2.35		S 8000N 950W		<0.2	19	70	147	2.60
S 6600N 50W		<0.2	32	70	170	2.00		S 8000N 1000W		<0.2	16	85	195	2.75
S 6600N 100W		<0.2	35	33	80	1.05		S 8000N 1050W		<0.2	16	60	155	2.35
S 6600N 150W		<0.2	47	69	170	2.40		S 8000N 1100W		<0.2	11	59	210	2.25
S 6600N 200W		<0.2	29	37	85	1.10		S 8000N 1150W		<0.2	13	42	160	1.90
S 6600N 250W		<0.2	37	45	125	1.45		S 8000N 1200W		<0.2	19	67	400	2.85
S 6600N 300W		<0.2	44	96	325	2.40		S 8000N 1250W		<0.2	41	78	1500	4.00
S 6600N 350W		<0.2	39	84	280	2.05		S 8000N 1300W		<0.2	20	60	580	2.30
S 6600N 400W		<0.2	56	88	250	1.90		S 8000N 1350W		<0.2	21	59	415	2.45
S 6600N 450W		<0.2	58	91	133	1.95		S 8000N 1400W		<0.2	24	68	188	2.30
S 6600N 500W		<0.2	100	144	390	3.00		S 8000N 1450W		<0.2	24	61	225	2.70
S 6600N 550W		<0.2	24	84	285	2.30		S 8000N 1500W		<0.2	33	73	355	3.00
S 6600N 600W		0.2	94	134	615	2.55		S 8000N 1550W		<0.2	25	56	218	2.50
S 6600N 650W		0.2	98	163	310	2.70		S 8000N 1600W		<0.2	23	44	200	2.20
S 6600N 700W		<0.2	34	75	230	1.90		S 8000N 1650W		<0.2	14	56	200	2.35
S 6600N 750W		<0.2	73	104	282	2.40		S 8000N 1700W		<0.2	53	76	252	2.70
S 6600N 800W		0.2	147	84	220	2.10		S 8000N 1750W		<0.2	62	68	500	2.50
S 6600N 850W		<0.2	30	70	215	1.75		S 8000N 1800W		0.2	51	64	440	2.35
S 6600N 900W		0.3	99	132	980	2.80		S 8000N 1950W		<0.2	42	57	165	2.00
S 6600N 950W		<0.2	62	123	360	2.80								
S 6600N 1000W		<0.2	107	206	272	3.85								
S 8000N 00W		<0.2	16	114	2100	2.35								
S 8000N 50W		<0.2	13	49	100	1.50								
S 8000N 100W		<0.2	40	83	260	2.20								
S 8000N 150W		<0.2	75	92	140	1.90								
S 8000N 200W		0.3	97	102	650	2.45								
S 8000N 250W		<0.2	85	70	340	2.30								
S 8000N 300W		<0.2	84	74	390	2.30								
S 8000N 350W		0.2	71	78	160	2.55								
S 8000N 400W		<0.2	22	36	195	2.40								



LITHOLOGY

**LOWER CAMBRIAN**  
 2 LIMESTONE, X BUFF TO LIGHT GREY WEATHERING  
 MEDIUM TO THICK BEDED TO MASSIVE  
 OCCASIONAL PHYLLITE OR SHALE PARTINGS

**LOWER CAMBRIAN AND EARLIER**  
 1 QUARTZITE, SILTSTONE, MUDSTONE, SHALE  
 QUARTZITE IS MASSIVE, BLOCKY WEATHERING  
 LIGHT GREY TO TAN WEATHERING  
 SILTSTONE IS LIGHT BROWN AND THIN BEDED

SYMBOLS

- OUTCROP
- APPROXIMATE GEOLOGICAL CONTACT
- FAULT (APPROXIMATE)
- BEDDING, STRIKE & DIP ATTITUDE
- JOINT, ATTITUDE
- ROCK SAMPLE  
SAMPLE NO., Pb, Zn, Ag in ppm
- STREAM SEDIMENT SAMPLE  
SAMPLE NO., Pb, Zn, Ag in ppm
- CUT LINE

NOTE: ONLY 30+00N EAST-WEST CUT LINE

091591  
 REGIONAL RESOURCES LTD.  
**PRELIMINARY GEOLOGY MAP**

TIM CLAIM GROUP  
 WOLF LAKE MAP AREA, N.T.S. 105B/1  
 WATSON LAKE MINING DISTRICT, YUKON TERRITORY

SCALE 1:10,000  
 BY  
 CORDILLERAN ENGINEERING  
 1980-1055 W. HASTINGS STREET  
 VANCOUVER, B.C. V6E 2E9

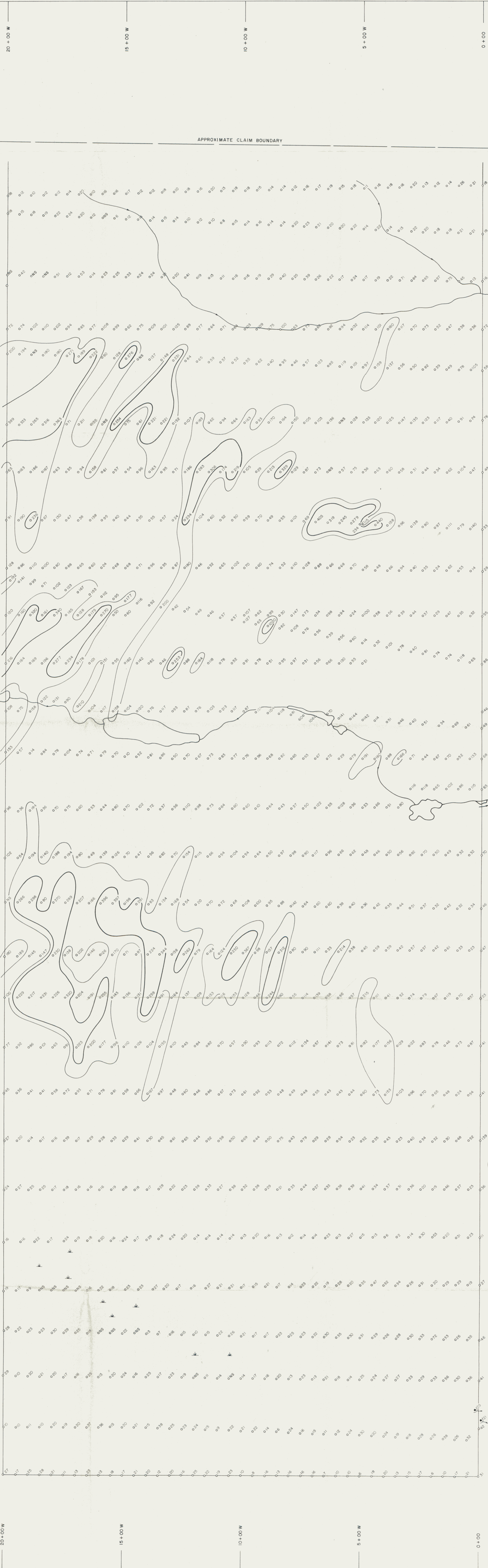


OCTOBER 1984

PLATE 1

BM 294  
 1307' 98" ±  
 ELEVATION 1220.14 m

YUKON TERRITORY  
 BRITISH COLUMBIA



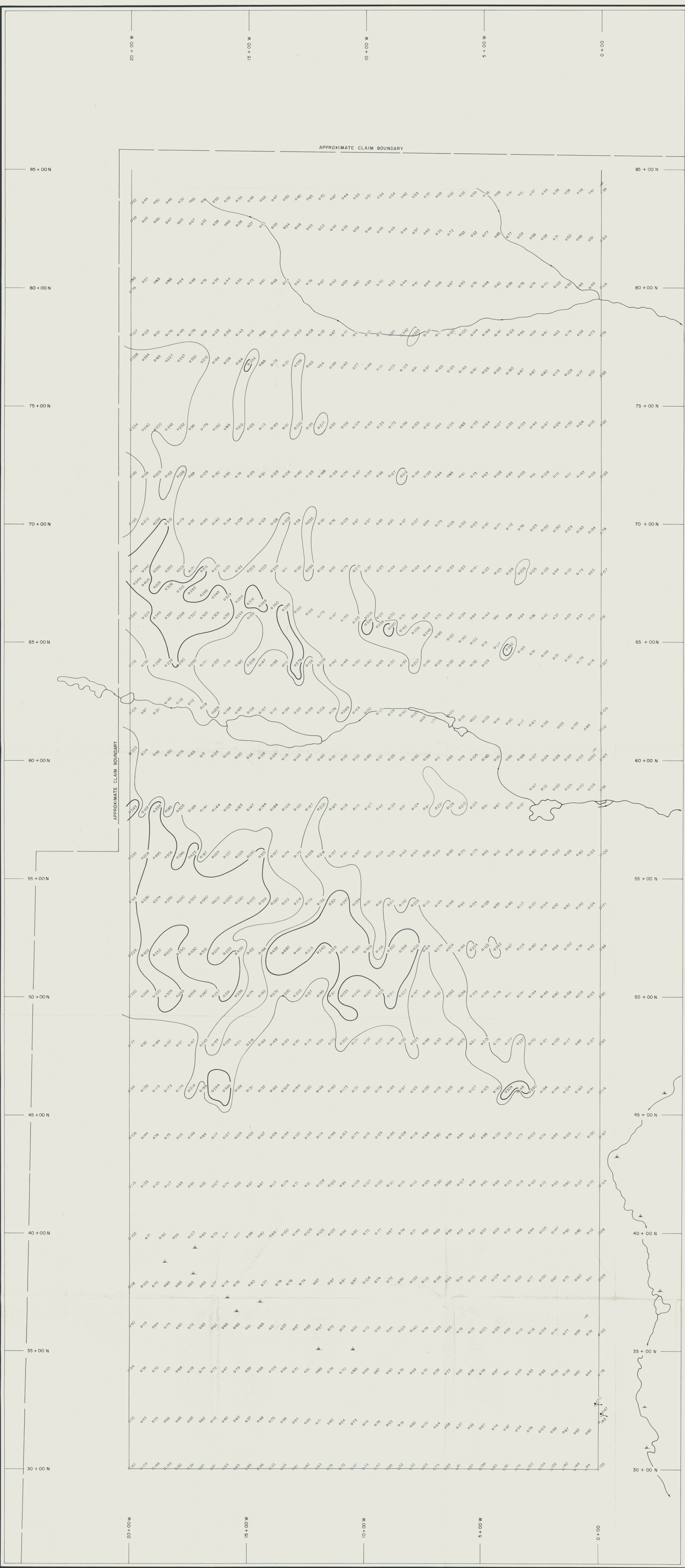
- EXPLANATION**
- SOIL SAMPLE STATION
  - NS NO SAMPLE
  - SPRING / SEEP SAMPLE
  - CUT LINE
  - 215 ppm LEAD CONTOUR
  - 150 ppm LEAD CONTOUR
- HIGHLY ANOMALOUS > 215 ppm  
 ANOMALOUS 95 - 214 ppm  
 BACKGROUND 33 ppm
- ALL VALUES IN PARTS PER MILLION (ppm)

**NOTE:**  
 DRAINAGES FROM AIRPHOTOS.

091591  
 REGIONAL RESOURCES LTD.  
**LEAD GEOCHEMISTRY**  
 TIM CLAIM GROUP  
 WOLF LAKE MAP AREA, N.T.S. 105B/1  
 WATSON LAKE MINING DISTRICT, YUKON TERRITORY

SCALE 1:5,000

BY  
 CORDILLERAN ENGINEERING  
 1980-1055 W. HASTINGS STREET  
 VANCOUVER, B.C. V6E 2E9



- EXPLANATION**
- SOIL SAMPLE STATION
  - NS NO SAMPLE
  - SPRING/SEEP SAMPLE
  - CUT LINE
  - 290 ppm ZINC CONTOUR
  - 200 ppm ZINC CONTOUR
- HIGHLY ANOMALOUS > 290 ppm  
 ANOMALOUS 170 - 290 ppm  
 BACKGROUND 97 ppm
- ALL VALUES IN PARTS PER MILLION (ppm)

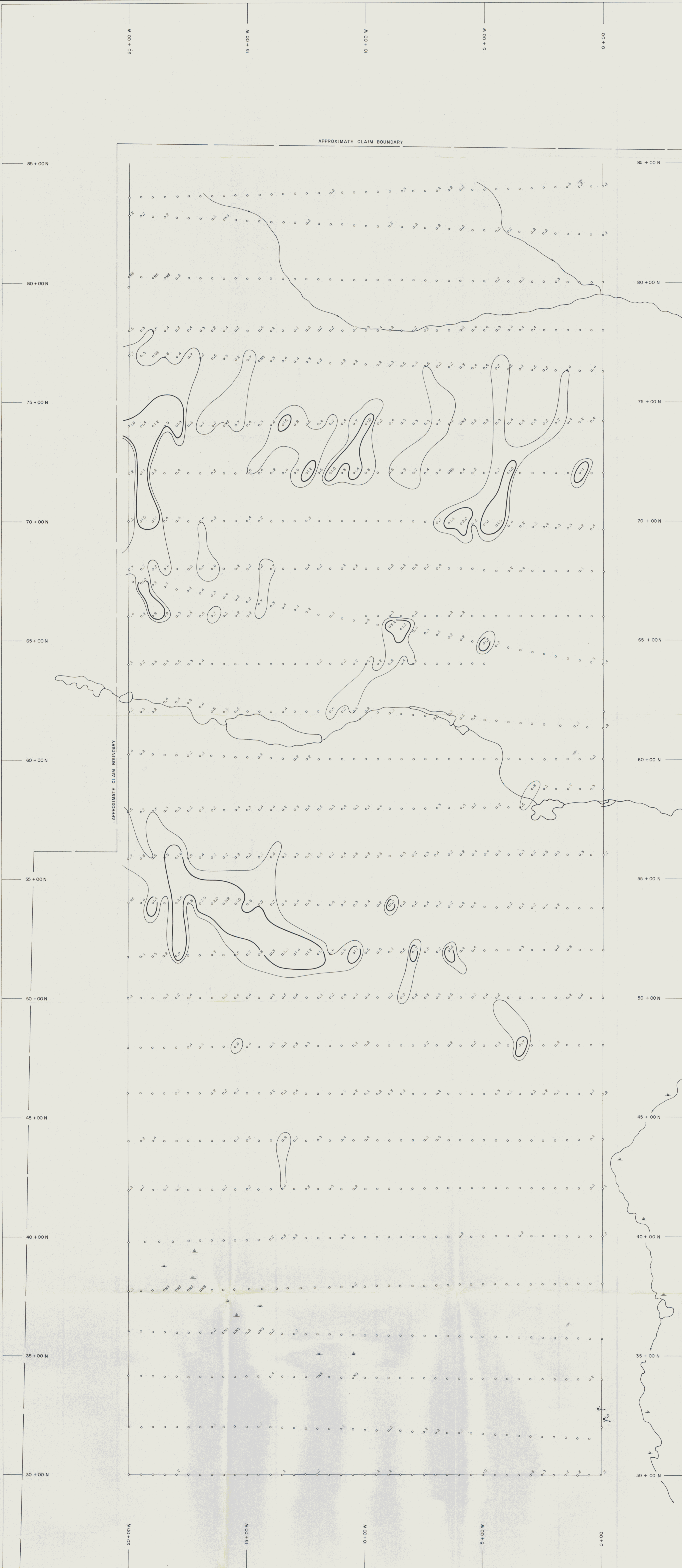
**NOTE:**  
 DRAINAGES FROM AIRPHOTOS.

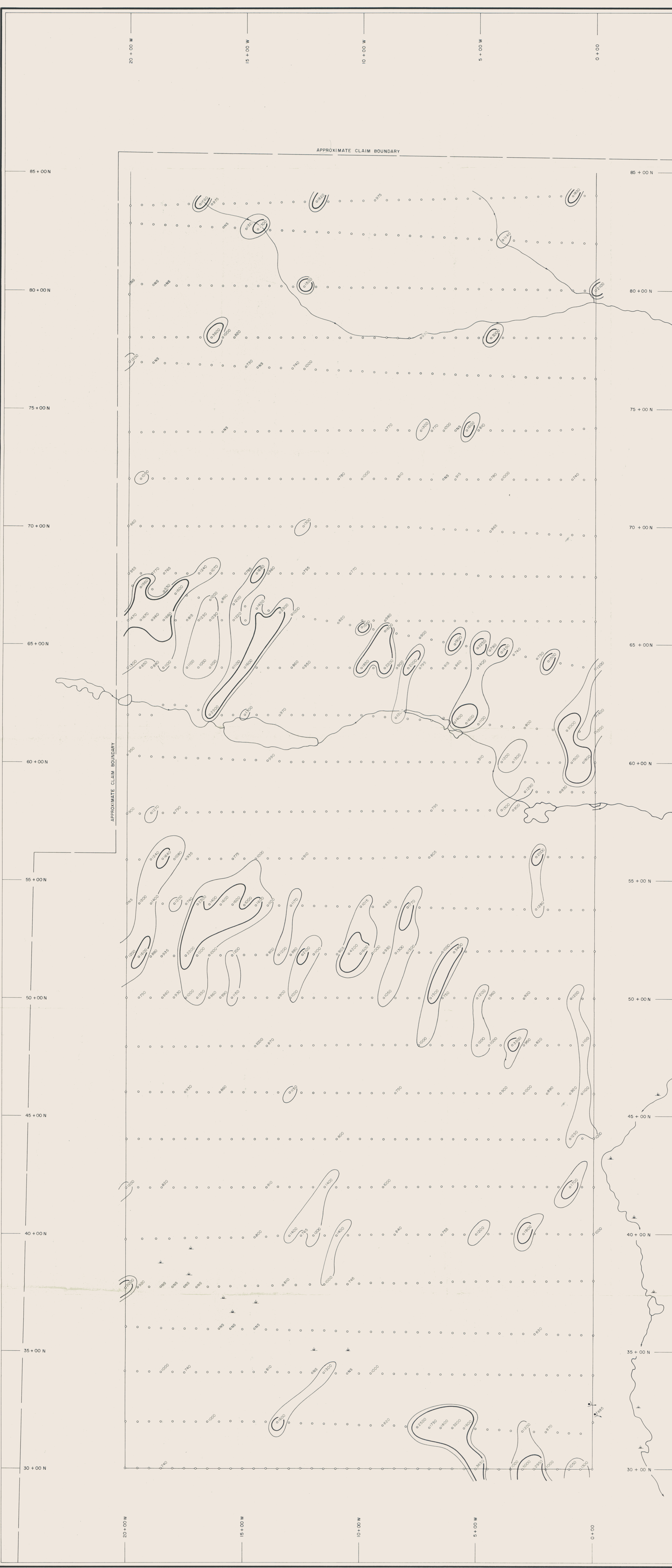
091591  
 REGIONAL RESOURCES LTD.  
**ZINC GEOCHEMISTRY**  
 TIM CLAIM GROUP  
 WOLF LAKE MAP AREA, N.T.S. 105B/1  
 WATSON LAKE MINING DISTRICT, YUKON TERRITORY

SCALE 1:5,000  
 100 0 100 200 300 METRES

BY  
 CORDILLERAN ENGINEERING  
 1980-1055 W. HASTINGS STREET  
 VANCOUVER, B.C. V6E 2E9

OCTOBER 1984





**EXPLANATION**

- SOIL SAMPLE STATION
  - NS NO SAMPLE
  - SPRING/SEEP SAMPLE
  - CUT LINE
  - 1430 ppm MANGANESE CONTOUR
  - 1000 ppm MANGANESE CONTOUR
- HIGHLY ANOMALOUS > 1430 ppm  
 ANOMALOUS 730 - 1429 ppm  
 BACKGROUND 358 ppm
- ALL VALUES IN PARTS PER MILLION (ppm)

**NOTE:**  
 DRAINAGES FROM AIRPHOTOS.  
 ONLY ANOMALOUS VALUES PLOTTED

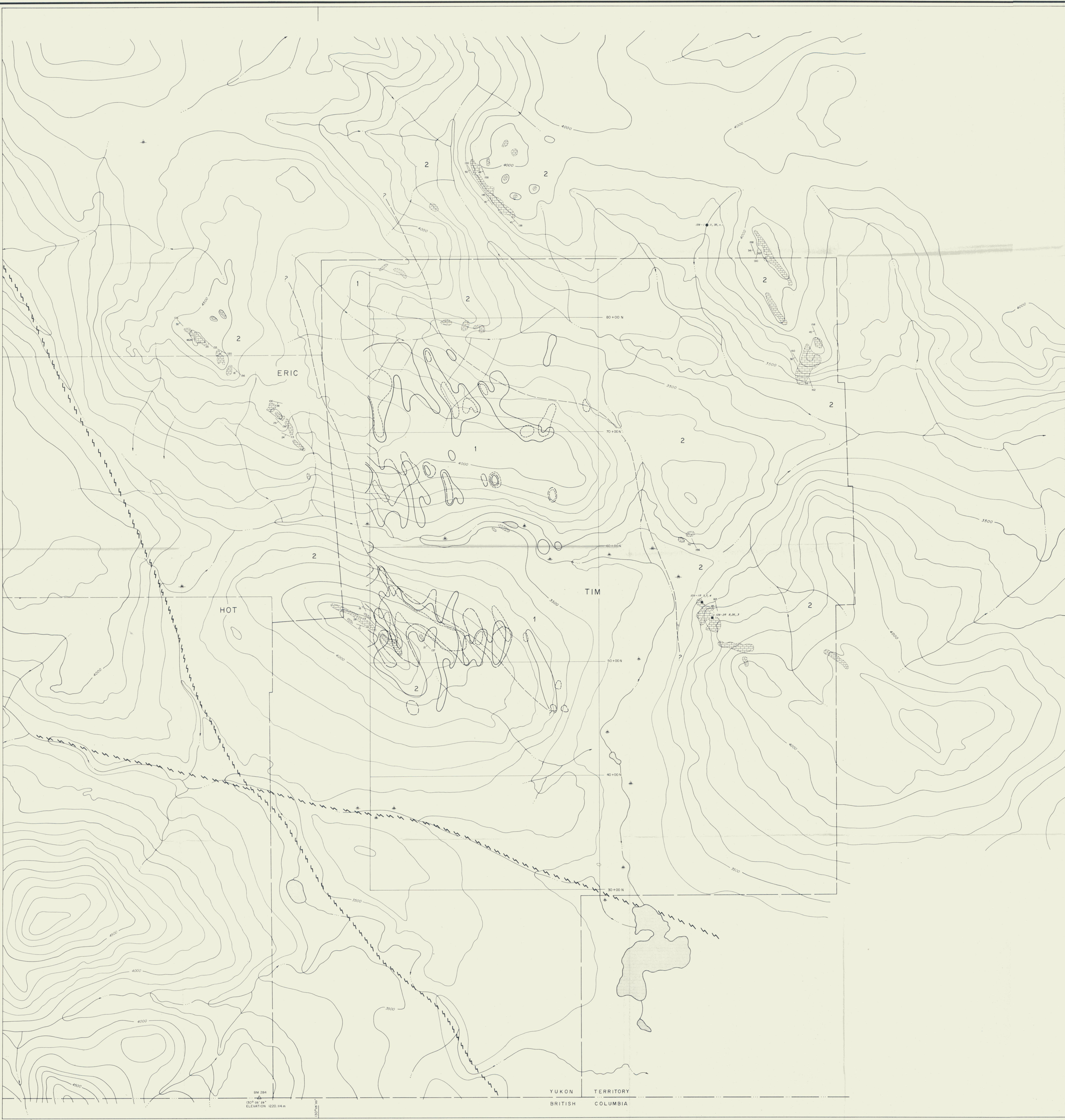
091591  
 REGIONAL RESOURCES LTD.  
**MANGANESE GEOCHEMISTRY**  
 TIM CLAIM GROUP  
 WOLF LAKE MAP AREA, N.T.S. 105B/1  
 WATSON LAKE MINING DISTRICT, YUKON TERRITORY

SCALE 1:15,000  
 0 100 200 300 METRES

BY  
**CORDILLERAN ENGINEERING**  
 1980-1055 W. HASTINGS STREET  
 VANCOUVER, B.C. V6E 2E9

OCTOBER 1984

PLATE 5



LITHOLOGY

- LOWER CAMBRIAN**
- 2 LIMESTONE, 2 BUFF TO LIGHT GREY WEATHERING MEDIUM TO THICK BEDDED TO MASSIVE OCCASIONAL PHYLITE OR SHALE PARTINGS
- LOWER CAMBRIAN AND EARLIER**
- 1 QUARTZITE, SILTSTONE, MUDSTONE, SHALE QUARTZITE IS MASSIVE, BLOCKY WEATHERING LIGHT GREY TO TAN WEATHERING SILTSTONE IS LIGHT BROWN AND THIN BEDDED

SYMBOLS

- OUTCROP
- APPROXIMATE GEOLOGICAL CONTACT
- FAULT (APPROXIMATE)
- BEDDING; STRIKE & DIP ATTITUDE
- JOINT; ATTITUDE
- ROCK SAMPLE SAMPLE NO; Pb, Zn, Ag in ppm
- STREAM SEDIMENT SAMPLE SAMPLE NO; Pb, Zn, Ag in ppm
- CUT LINE

NOTE: ONLY 30+00N EAST-WEST CUT LINE

GEOCHEMISTRY

- 150 ppm LEAD CONTOUR
- 250 ppm ZINC CONTOUR
- 0.9 ppm SILVER CONTOUR

REGIONAL RESOURCES LTD.  
**COMPILATION MAP**

TIM CLAIM GROUP  
 WOLF LAKE MAP AREA, N.T.S. 105B/1  
 WATSON LAKE MINING DISTRICT, YUKON TERRITORY

SCALE = 1:10,000  
 BY  
 CORDILLERAN ENGINEERING  
 1940-1055 W HASTINGS STREET  
 VANCOUVER, B.C. V6E 2E9

BM 284  
 130° 05' 29"  
 ELEVATION 1220.94 m

YUKON TERRITORY  
 BRITISH COLUMBIA

