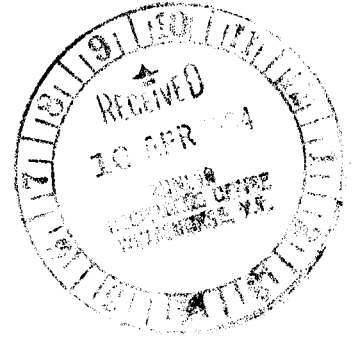


1983 Geological and Geochemical  
Assessment Report



TITLE Dragon Lake Report

CLAIMS Nurf 1-38

COMMODITY Au-W

LOCATION Pelly Plateau, Y.T.  
83 km N.E. of Ross River  
Latitude 62°36'N Longitude 131°31'W  
Whitehorse Mining District, Y.T.  
NTS 105J 12

BY A. C. Hitchins

FOR Canamax Resources Inc.

WORK PERIOD June 17 - 25, 1983

**091533**

CANAMAX VANCOUVER OFFICE

This report has been examined by  
the Geological Evaluation Unit  
under Section 53 (4) Yukon Quartz  
Mining Act and is allowed as  
representation work in the amount  
of \$ 13,320.<sup>38</sup>.

*K. Grapes*

*for.* Regional Manager, Exp'oration and  
Geological Services for Commissioner  
of Yukon Territory.

TABLE OF CONTENTS

SUMMARY-----1

CONCLUSIONS-----2

INTRODUCTION

    Location and Access-----3

    Claim Data-----3

    Previous Work-----3

    Field Program in 1983-----3

GEOLOGY

    Regional Geology-----4

    Property Geology-----4

    Mineralization-----5

GEOCHEMISTRY-----7

APPENDICES

Appendix I - Statement of Costs

Appendix II - Statement of Qualifications

Appendix III - Analytical Results and Methods

FIGURES

Figure 1 - Location Map-----After Page 3

Figure 2 - Claim Map (1" to ½ mi.)-----After Page 3

Figure 3 - Geological Map (1:5,000)-----In Pocket

Figure 4 - Geochemical Map (1:5,000)-----In Pocket

Figure 5 - Geochemical Map (1:2,000)-----In Pocket

SUMMARY

The Dragon Lake property consists of the Nurf 1-38 claims located in the Yukon 83 km N.E. of the town of Ross River. The claims cover a southeast striking sequence of Hadrynian clastic and locally calcareous rocks that have been intruded by a small recessive weathering quartz monzonite stock.

Geological mapping followed by a soil geochemical survey concentrated on the southeastern portion of the stock and the extensive hornfels zone above the gently dipping southeastern intrusive contact. Prospecting in the stock - hornfels contact zone identified the following three types of mineralization:

- a) narrow arsenopyrite-quartz-sericite veins in gritty quartzite grade up to 0.088 oz/T Au and 1.96 oz/T Ag.
- b) quartz-sericite-pyrite ± scheelite veins in the sericitized margins of the quartz monzonite.
- c) pyrrhotite-pyroxene skarn pods up to 2 by 5 m with up to 0.5% Cu and 0.058 oz/T Au.

The close spatial association of gold and copper soil anomalies with skarn outcrops suggests most of the gold occurs with chalcopyrite in the small skarn zones.

CONCLUSIONS

Mineralization within the altered contact zone of a quartz monzonite stock and adjacent hornfelsed sediments includes arsenopyrite-quartz veins, quartz-sericite-pyrite + scheelite veins and pyrrhotite-pyroxene skarn pods. Maximum exposed size of the skarn pods is 2 by 5 m with a gold content of up to 0.058 oz/T Au. Quartz veins contained low gold values over narrow widths. Tungsten and copper values in veins and skarn are disappointing.

Soil geochemistry did not extend the skarn pods beneath overburden covered areas.

## INTRODUCTION

### Location and Access

The Dragon Lake W-Au property is situated on the southwest shore of Dragon Lake approximately 83 km northeast of the town of Ross River, Y.T.

The property is accessible by either float plane or helicopter from Ross River. Boat access is possible from a launching ramp 11 km to the southeast where the North Canal Road jogs around the south end of the lake.

### Claim Data

The property comprises the Nurf 1-38 claims staked in the Whitehorse Mining District (Claim Map 105J-12) during April, 1983.

<u>Claim Name</u>	<u>Tag Numbers</u>	<u>No. of Claims</u>	<u>Expiry Date</u>
Nurf 1-38	YA75565-YA75602	38	April 20, 1984

### Previous Work

Roddick and Green mapped the Sheldon Lake map sheet (105J) for the G.S.C. in 1958-1960 and released the results as Map 12-1961. G.S.C. field parties examined the Tertiary South Fork Volcanics west of the Dragon Lake property and Cambrian carbonates southeast of the Canal Road in 1983.

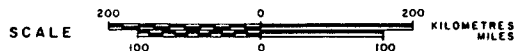
The ground presently covered by the Nurf claims has been explored by Kennco in 1960 and the Cub. J/V (Cassiar Res. Ltd., Highland-Crow Res. Ltd. and Union Carbide) in 1980 for Cu-W skarns associated with the contact aureole of a recessive weathering Cretaceous stock. The showings were examined by Amax in 1982 as part of the Nahanni J/V with Cantung.

### Field Program in 1983

Between June 17 - 25 a Canamax field crew comprising Tony Hitchins, Geoff Booth, Paul Elkins and Steve Goertz carried out geological mapping and established a compass and topofil grid to control soil geochemical survey. The crew was mobilized and demobilized using a TNTA 206 based in Ross River.

CANAMAX RESOURCES INC.  
CANADA TUNGSTEN MINING CORPORATION LIMITED  
**DRAGON LAKE PROPERTY**  
**NURF CLAIMS**  
WHITEHORSE MINING DISTRICT - YUKON TERRITORY

**LOCATION MAP**



N.T.S. Ref. 105 J 12

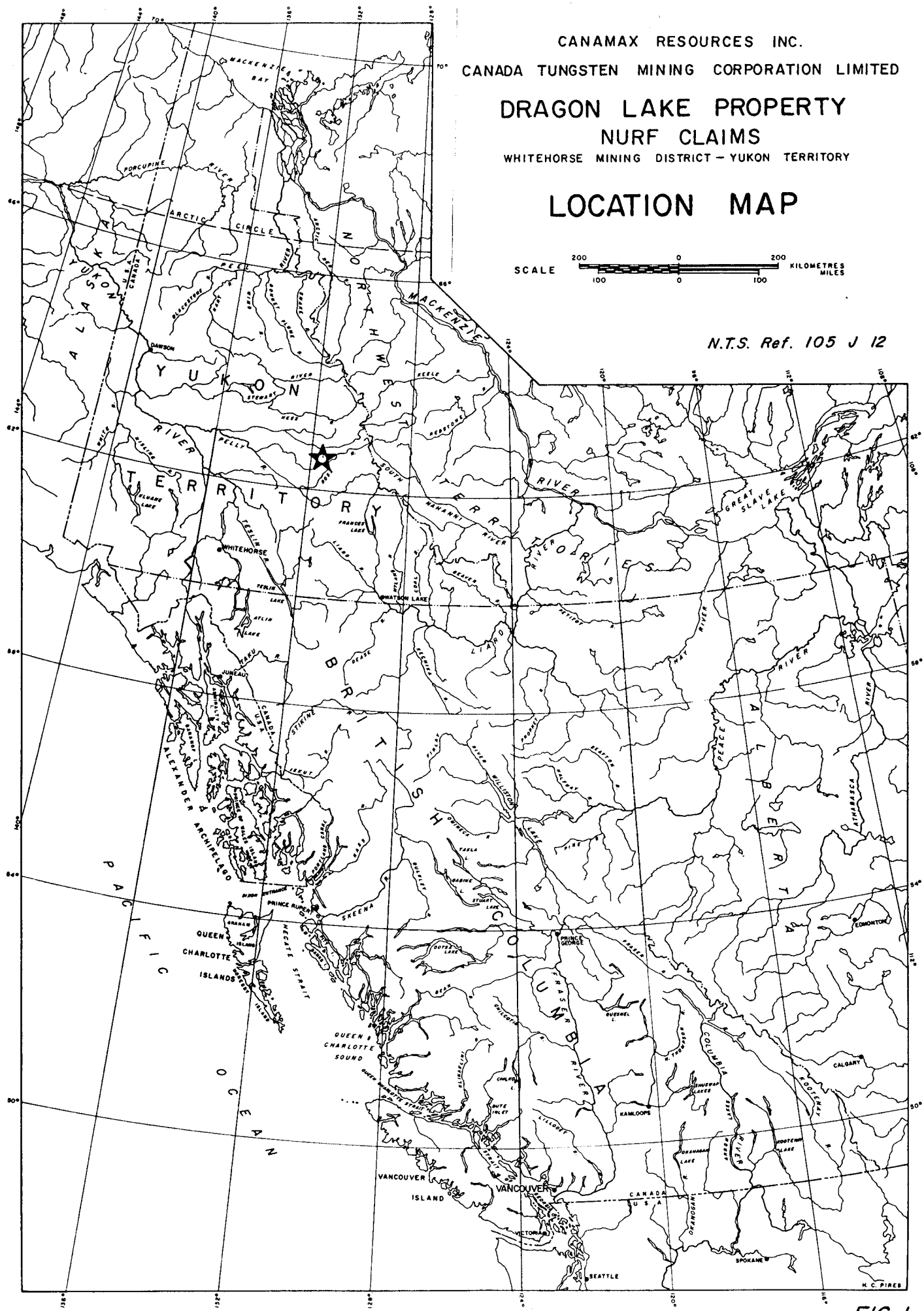
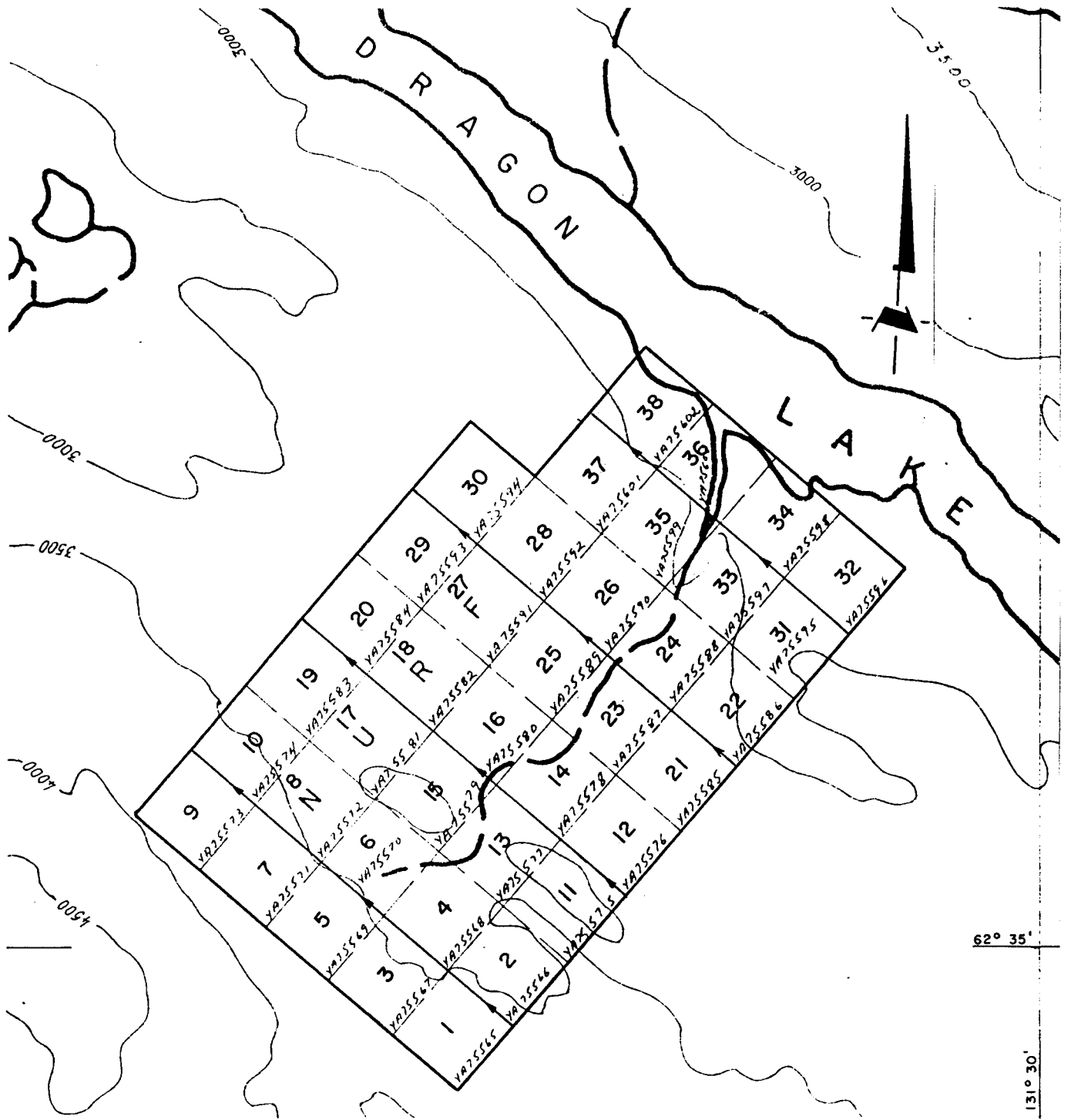


FIG. 1



CANAMAX RESOURCES INC.  
 CANADA TUNGSTEN MINING CORPORATION LIMITED

**DRAGON LAKE PROPERTY**  
**NURF CLAIMS**

WHITEHORSE MINING DISTRICT—YUKON TERRITORY

**CLAIM MAP**



1 : 31,680

Vancouver —

N.T.S. Ref. 105 J 12

FIG. 2

## GEOLOGY

### Regional Geology

East to southeast striking Hadrynian "gritty" quartzites and conglomerate with interbedded marble are unconformably overlain by Paleozoic varicoloured cherts, siliceous shales and chert pebble conglomerates over much of the Sheldon Lake map sheet. Thick, extensive intermediate volcanic flows of Tertiary age unconformably overlie deformed Paleozoic strata west and southwest of the property. Resistant Cretaceous quartz monzonite stocks have locally intruded and hornfelsed the stratified rocks.

### Property Geology

#### General -

The Dragon Lake property is underlain by a southeast-northwest striking sequence of Hadrynian phyllites and gritty, quartzitic metasediments with a concentration of intercalated limy phyllites and marble in the eastern portion of the claim block. The intrusion of a 600 m diameter biotite quartz monzonite plug has imposed a variety of thermal and chemical alterations on the metasediments ranging from intense sericitization of the siliclastics immediately southeast of the intrusion to pelitic-calcsilicate hornfels and ultimately pyrrhotite-pyroxene skarn in the southeast portion of the property. West of the intrusion a zone of brecciated quartzite and weakly hornfelsed phyllite with a siliceous and granitic matrix is exposed in several large resistant knobs.

Three styles of mineralization have been observed:

1. chalcopyrite and minor scheelite in the pyrrhotite-pyroxene skarn
2. arsenopyrite-quartz veins within sericitized gritty quartzites
3. subparallel quartz-pyrite-sericite + scheelite veins in kaolinized portions of the quartz monzonite

Brief descriptions of the mapped rock units follow.

### Hadrynian -

Light grey to white weathering quartzite, pebbly quartzite to micaceous quartzite (Unit Hg) is the dominant exposed lithology over most of the property. Bands of greenish phyllite intercalated with the quartzitic metasediments rarely form more than 15% of an outcrop. A light tan to greenish non-calcareous phyllite, locally strongly magnetic due to small magnetite octahedrons, is exposed south and west of the intrusion (Units Hp, Hpm). The marble (Unit Hl), limy phyllite and calcareous quartzite immediately west of Dragon Lake have been altered to an intercalated series of pelitic and calcsilicate hornfels (Unit Hc), pyroxene-garnet skarn (Unit Hk) and rusty weathering podiform pyrrhotite-pyroxene ± garnet skarn (Unit Hs).

Clastic metasediments adjacent to the southeast margin of the intrusion have been intensely sericitized (Unit Hgs). The kaolinization of detrital feldspar combined with sericitization has prevented accurate delineation of the intrusive-sediment contact in this area.

### Cretaceous -

The recessive weathering 600 m diameter biotite quartz monzonite stock exposed in the northwest corner of the property is generally well fractured, hematized and kaolinized (Unit Kqm). Small outcrops of weakly altered intrusive vary in texture from equigranular to weakly feldspar porphyritic with few quartz-carbonate veins. Southwest of the stock, brecciated, variably hornfelsed phyllite fragments and blocks float in a matrix of white quartz and, less commonly, quartz monzonite (Unit Kbf). Outcrops of the breccia are resistant, glacially polished, and only locally iron stained.

### Mineralization

Three distinct types of sulphide mineralization were noted during the property work.

1) Arsenopyrite-quartz-sericite veins were noted in several outcrops of gritty quartzite 200 m southeast of the intrusive contact. The veins are rarely wider than 2 cm and could not be traced for more than a metre in the rubbly outcrop. Assay values vary up to 0.088 oz/T Au and 1.96 oz/T

Ag (Sample #83ZTT3) from vein grab samples.

2) Quartz-sericite-pyrite  $\pm$  scheelite  $\pm$  silvery grey metallic needles are best exposed in kaolinized and sericitized portions of the quartz monzonite in the canyon that follows the southeastern intrusive contact. Most of the veins are subvertical and strike approximately  $40^{\circ}$ , parallel to the canyon walls. One 2 m wide exposure contained 4 parallel veins up to 10 cm wide but most vein concentrations are less than this.

Pyrite rarely forms over 5% of the veins and may occasionally occur with pyrrhotite and trace chalcopyrite. Scheelite content is extremely variable but rarely exceeds 1%. Habit varies from 0.5 cm cream coloured crystals, fine disseminations in the sericitic vein margins to paint along closely spaced fractures in the quartz. Silvery grey metallic, subsectile needles occur in 2 mm radiating clusters and scattered blebs in the quartz. On the basis of limited geochemical results this mineral is tentatively identified as a lead sulphosalt.

3) Skarn pods up to 2 by 5 m are exposed in calcsilicate along the southern bank of a creek 700 m north of the southern claim boundary. Pyrrhotite in these rusty weathering skarn and calcsilicate units is the most conspicuous sulphide on the property and locally comprises more than 40% of individual skarn pods. Disseminated and blebby chalcopyrite is erratically scattered through the pyrrhotite-pyroxene skarn but appears to be unrelated to pyrrhotite content. Selected grab samples carry 0.5% Cu and 0.058 oz/T Au. Scheelite is sparse to absent in all the skarn bands lamped.

GEOCHEMISTRY

A compass and topofil grid was constructed over the eastern half of the intrusion and the skarn lenses southeast of the stock. Lines were centred on 50 and 100 m centres with soil sample stations every 12.5 m. Approximately 550 soil samples were collected, where possible, at depths of between 10-25 cm. Samples were placed in kraft paper bags and shipped to Rossbacher Labs in Burnaby where they were analysed for Mo, Cu, Ag, Zn, Pb, Au and occasionally As. Analytical results are summarized in Appendix III and analytical values for Cu are plotted in Figure 5.

Except for swampy ground on portions of lines 2W to 5W west of the baseline the grid area is mantled by fine sandy soil from inches to several feet thick. A recent forest fire has reduced the surface litter and organic rich layer to a minimum. Rusty brown iron enriched horizons are developed on all south facing well drained slopes.

The close spatial association and in many cases coincidence of >10 ppb Au with >100 ppm Cu (L5E 2+50N, L2E 0+50N, L1E 0+40S) indicates that most of the gold is probably derived from the chalcopyrite bearing sulphide skarn pods. The copper anomaly in the stream valley on lines 0+50W and 1+00W west of the baseline could be produced from weathering of either the quartz-sericite-pyrite + scheelite veins in the underlying altered quartz monzonite or from minor chalcopyrite in pyrrhotite skarn lenses exposed upstream on the intrusive contact. Silver values are sporadic and range up to 2.5 ppm but also follow copper.



---

A. C. Hitchins

APPENDIX I

STATEMENT OF COSTS

APPENDIX I  
STATEMENT OF COSTS

Work Period - June 17-25, 1983

Personnel Employed

A.C. Hitchins-2476 W. 13th Ave. Vancouver, B.C. Staff Geologist; 9 days @ \$177.63/day	1,598.67
G. Booth-107-50 Walmer Rd. Toronto, Ont. Sr. Geologist; 9 days @ \$102.08/day	918.72
P. Elkins-1241 Barlynn Cresc., N. Vancouver, B.C. Geol. Asst.; 9 days @ \$66.58/day	599.22
S. Goertz-1038 Marigold Ave., N. Vancouver, B.C. Geol. Asst.; 9 days @ \$66.58/day	599.22

Room and Board - 36 man days @ \$35/man day 1,260.00

Helicopter - Trans North Air  
Box 4338  
Whitehorse, Y.T.

Invoice No. 68109 Move in - 1.35 hr x \$550/hr + fuel	743.85
Invoice No. 68120 Move out - 2.0 hr x \$550/hr + fuel	1,102.00

Geochemical Analyses - Rossbacher Laboratory  
2225 S. Springer Ave.  
Burnaby, B.C.

Invoice Nos. 3209, 3236, 3305 27 samples for Mo, Cu, Ni, Co, Mn, Fe, Ag, Zn, Pb 593 samples for Mo, Cu, Ag, Zn, Pb, Au 26 samples for Au 122 samples for As 69 samples for W 8 assays for Cu, Au, Ag 17 assays for Au, Ag	5,974.70
--	----------

Report Preparation and Drafting 525.00

\$13,320.38

# Isbacher Laboratory Ltd.

GEOCHEMICAL ANALYSTS & ASSAYERS

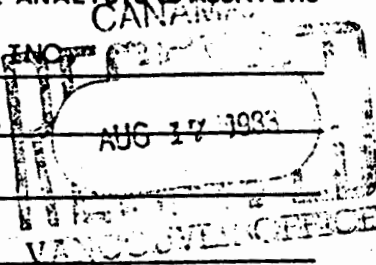
2225 S. SPRINGER AVE.,  
BURNABY, B. C.  
CANADA  
TELEPHONE: 299-6910  
AREA CODE: 604

CANAMAX RESOURCES INC.

601-535 Thurlow St.

Vancouver, B.C.

57050



DATE Aug 15, 1983

INVOICE NO. 3209

CERTIFICATE NO. as marked

ITEM	DESCRIPTION	SUB-TOTAL	TOTAL
24	Geochem analysis for 9 elements @ \$ 5.70	\$ 136.80 ✓	
418	5	1,630.20 ✓	
410	Au	1,435.00 ✓	
42	As	121.80 ✓	
10	W	30.00 ✓	
10	Panned Cons prep	17.50 ✓	
400	Soil prep	200.00 ✓	
20	Rock prep	40.00 ✓	
8	Assays for Cu, Au, Ag	120.00 ✓	
17	Au, Ag	161.50 ✓	
3	W03	24.00 ✓	
<p>ADD &amp; EXT. CORRECT</p> <p><i>[Signature]</i> Aug 11/83</p> <p>57050 8080      3916.80</p> <p>CK. 2 5 2 4 8 AUG 19 1983</p>			<p>✓ <i>[Signature]</i></p> <p><b>\$ 3,916.80</b></p>

TERMS - NET 30 DAYS

8 assays for: Cu, Au, Ag  
17 " " : Au, Ag  
3 " " : W03

# Rossbacher Laboratory Ltd.

GEOCHEMICAL ANALYSTS & ASSAYERS

2225 S. SPRINGER AVE.,  
 BURNABY, B. C.  
 CANADA  
 TELEPHONE: 299-6910  
 AREA CODE: 604

CANAMAX RESOURCES INC.

601-535 Thurlow St.

Vancouver, B.C.

# 57050

DATE Sept 5, 1983

INVOICE NO. 3236

CERTIFICATE NO. as marked

ITEM	DESCRIPTION	SUB-TOTAL	TOTAL
✓ 133	Geochem analysis for 5 elements @ \$ 3.90	\$ 518.70 ✓	
✓ 10	Sn 3.00	30.00 ✓	
✓ 174	Au 3.50	609.00 ✓	
✓ 80	As 2.90	232.00 ✓	
✓ 127	Soil prep 0.50	63.50 ✓	
<div data-bbox="470 915 885 1149" data-label="Text"> <p>ADD &amp; EXT CORRECT  <i>Pinch</i> <i>Sept 5</i>                      57050 8080 145320</p> </div>			
<div data-bbox="462 1191 885 1244" data-label="Text"> <p>CK 2 53 8 3 SEP 13 1983</p> </div>			<div data-bbox="1412 1117 1567 1404" data-label="Text"> <p><i>B</i>                      1,453                      \$ 1,544                      ✓</p> </div>

TERMS - NET 30 DAYS

# Rossbacher Laboratory Ltd.

GEOCHEMICAL ANALYSTS & ASSAYERS

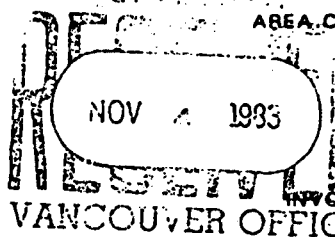
2225 S. SPRINGER AVE.,  
BURNABY, B. C.  
CANADA  
TELEPHONE: 299-6910  
AREA CODE: 604

CANAMAX RESOURCES INC.

601-535 Thurlow St.

Vancouver, B.C.

57050



DATE Oct 30, 1983

INVOICE NO. 3305

CERTIFICATE NO. as marked

ITEM	DESCRIPTION	SUB-TOTAL	TOTAL
3	Geochem analysis for 9 elements @ \$ 5.70	\$ 17.10 ✓	
42	5	163.80 ✓	
35	Au	122.50 ✓	
59	W	177.00 ✓	
10	Sn	30.00 ✓	
6	Panned Con. prep	9.00 ✓	
7	Soil prep	3.50 ✓	
41	Rock prep	82.00 ✓	
			215
			\$ 604.90

ADD. EXT. COMMENT  
 GH Nov 8/83  
 57050 8080 60490  
 CK. 1183 NOV 8 1983

TERMS - NET 30 DAYS



**RANS NORTH WIRAX**

TRANS NORTH TUBSON  
 114-4318 • WINTER USE • YUGON 3000 • V.N. 33  
 TELEPHONE 431-1000 • 117 • 117 • 117 • 117

*ANANAK* JUL 14 1983

601-535  
 BILLING ADDRESS VANCOUVER OFFICE  
 VAN BC YUG 300

ACCOUNT NUMBER	1100
188120	
INVOICE DATE	16/07/83
A/C TYPE	206B
AIRCRAFT REGISTRATION C	ATNH
FLIGHT DATE	25/06/83
PURCHASE ORDER NO.	

FUEL & OIL	TNTA FUEL USED	MRS. GALS.	FROM
TNTA CUST.	JP-9	2.0	PR

FROM	TO	MILES	HOURS	ZONE	REMARKS - NO. OF PASS - FREIGHT LBS.
PR	Moone Camp		2.0	B	Tony/H. Thomas
	Degeon L. to TUNN				
	CREEKS				

ADD & EXT	CORRECT	AMOUNT
57028	8207	1102.00
AUG 1983		

SUB	S.L.	AMOUNT
16018	ST020	1000.00
16018	ST1V	102.00

2.0	56000	1000.00

TERMS NET 30 DAYS  
 INTEREST PER MONTH (24% PER ANNUM) WILL  
 BE CHARGED ON ALL OUTSTANDING AMOUNTS  
 OVER 30 DAYS

*J. J. ...*  
 CHARTERER'S SIGNATURE

*J. J. ...*  
 PILOT'S SIGNATURE

INITIALS PILOT'S NAME

*W.K.A. Bill ...*  
 ENGINEER'S NAME

FLIGHT ATTENDANT

WAITING TIME	@	/HR.	
FUEL:	@	/GAL.	
FUEL:	200.0	@ .51 /GAL.	102.00
MEALS & LODGING			
OTHER			
OTHER			

**TOTAL \$ 1102.00**

FLIGHT REPORT  
 INVOICE

*IP*  
*Sheld*  
*VK*

APPENDIX II

STATEMENT OF QUALIFICATIONS

STATEMENT OF QUALIFICATIONS

NAME: A.C. Hitchins

ADDRESS: 601-535 Thurlow Street,  
Vancouver, B.C. V6E 3L6

EDUCATION: University of Toronto - B.A. Sc. 1970  
University of Toronto - M.Sc. 1973

EXPERIENCE: AMAX of Canada Limited - Staff Geologist - 1974 to present

G.W. Booth

#509 - 30 Charles Street West, Toronto, Ontario M4Y 1R5

Education - Secondary - University of Toronto Schools 1969-1973  
Tertiary - Western Australian Institute of Technology,  
1973-1974 University of Toronto, 1974-1980;  
B.Sc. Geology 1978, M.Sc. Geology 1981.  
Scholarships - Rotary International Student Exchange  
Scholarship to Perth, Western Australia,  
to attend the Western Institute of Technology  
M.Sc. Thesis Topic - The Pamiutuq Lake Batholith; a large  
(700 sq.km.) hypabyssal porphyritic acidic  
intrusion of Paleohelikan age located in the  
Baker Lake Basin of the N.W.T. A petrological,  
geochemical and geophysical evaluation of the  
body has been undertaken as part of a 1:250,000  
scale regional mapping project of the Basin  
itself, initiated by the Geological survey  
of Canada in 1976.

Experience -1973 - Underground and surface labourer, Agnico Eagle  
Gold Mines Ltd.  
1975 - Junior Geologist, Camflo Gold Mines Ltd.  
1976 - Junior Geologist, Hollinger Mines Ltd. Labrador  
Mining Ltd.  
1977 - Junior Geologist, United Siscoe Mines Ltd.  
1978 - Senior Geologist, Geological Survey of Canada,  
Precambrian Division  
1979 - Senior Geologist, Geological Survey of Canada,  
Precambrian Division  
1980 - Senior Geologist - AMAX of Canada Limited - 1980  
Field Season  
1983 - Senior Geologist - Canamax Resources Inc.

STATEMENT OF QUALIFICATIONS

NAME P.R. Elkins

ADDRESS 1241 Barlynn Crescent,  
North Vancouver, B.C.  
V7J 1P5

EDUCATION Capilano College - 1980/81 U.B.C. - 1982/83  
First Year Sciences:  
Courses in Physics, Calculus, Chemistry, Computer  
Science and English  
Second Year Sciences:  
Courses in Linear Algebra, Calculus IV,  
Thermodynamic Physics, Inorganic Chemistry,  
Physical Geography

EXPERIENCE May 1 - August 29, 1981 - Campbell Resources Inc.  
Geologist's helper  
Summer 1980 - United Metal Fabricators  
Production Worker  
December 1980 - May 1982 - Sixth Field Squadron R.C.E.  
Sapper (Private)  
Summer 1982 - AMAX of Canada Limited  
Geologist's Assistant  
Summer 1983 - Canamax Resources Inc.  
Geological Assistant

STATEMENT OF QUALIFICATIONS

**NAME** S.B. Goertz

**ADDRESS** 1038 Marigold Avenue,  
North Vancouver, B.C.  
V7R 2E2

**EDUCATION** Capilano College - Sept. 1980 - April 1982  
Science (general)  
University of British Columbia - Sept. 1982  
Geology (U2 major)

**EXPERIENCE** June 1981 - August 1981  
Chevron Standard Ltd. - Geological Trainee  
June 1982 - August 1982  
Chevron Standard Ltd. - Geological Trainee  
1983 Field Season  
Canamax Resources Inc. - Field Assistant

APPENDIX III

ANALYTICAL RESULTS AND METHODS

# Rossbacher Laboratory

GEOCHEMICAL ANALYSTS & ASSAYERS

2225 S. SPRINGER AVE.,  
BURNABY, B. C.  
CANADA  
TELEPHONE: 299-6910  
AREA CODE: 604

Jan. 1982

(1)

## GEOCHEMICAL ANALYTICAL METHODS CURRENTLY IN USE AT ROSSBACHER LABORATORY LTD.

### A. SAMPLE PREPARATION

1. *Geochem. Soil and Silt:* Samples are dried, and sifted to minus 80 Mesh, through stainless steel, or nylon screens.
2. *Geochem. Rock:* Samples are dried, crushed to minus  $\frac{1}{4}$  inch, split, and pulverized to minus 100 mesh.

### B. METHODS OF ANALYSIS

1. *Multi-element:* (Mo, Cu, Ni, Co, Mn, Fe, Ag, Zn, Pb, Cd):  
0.5 Gram sample is digested for four hours with a 15:85 mixture of Nitric-Perchloric acid.  
The resulting extract is analyzed by Atomic Absorption spectroscopy, using Background Correction where appropriate.
2. *Antimony:*  
0.50 Gram sample is fused with Ammonium Iodide and dissolved.  
The resulting solution is extracted into TOPO/MIBK and analyzed by Atomic Absorption spectroscopy.
3. *Arsenic:*  
0.25 Gram sample is digested with Nitric-Perchloric acid.  
Arsenic from the solution is converted to arsine, which in turn reacts with silver D.D.C. The resulting solution is analyzed by colorimetry.
4. *Barium:*  
0.50 Gram sample is repeatedly digested with  $\text{HClO}_4$ - $\text{HNO}_3$  and HF.  
The solution is analyzed by Atomic Absorption spectroscopy.
5. *Biogeochemical:*  
Samples are dried, and ashed at  $550^\circ\text{C}$ . and the resulting ash analyzed as in \*1, multi-element analysis.
6. *Bismuth:*  
0.50 Gram sample is digested with Nitric acid. The solution is analyzed by Atomic Absorption spectroscopy..
7. *Chromium:*  
0.25 Gram sample is fused with Sodium Peroxide. The solution is analyzed by Atomic Absorption spectroscopy.

# Rossbacher Laboratory

GEOCHEMICAL ANALYSTS & ASSAYERS

2225 S. SPRINGER AVE.,  
BURNABY, B. C.  
CANADA  
TELEPHONE: 299-6910  
AREA CODE: 604

(2)

## METHOD OF ANALYSIS (CONT.)

8. Fluorine: 0.50 Gram sample is fused with a Carbonate Flux, and dissolved.  
The resulting solution is analyzed for Fluorine by use of an Ion Selective Electrode.
9. Gold: 10.0 Gram sample is roasted at 550<sup>o</sup>C. and dissolved in Aqua Regia. The resulting solution is subjected to a Methylisobutyl Ketone extraction, which extract is analyzed for Gold using Atomic Absorption spectroscopy.
10. Mercury: 1.00 Gram sample is digested with Nitric and Sulfuric acids. The solution is analyzed by Atomic Absorption spectroscopy, using a cold vapor generation technique.
11. Partial Extraction and Fe/Mn oxides: 0.50 Gram sample is extracted using one of the following: Hot or cold 0.5 N. HCL, 2.5% E.D.T.A., Ammonium Citrate, or other selected organic acids. The solution is analyzed by use of Atomic Absorption spectroscopy.
12. pH: An aqueous suspension of soil, or silt is prepared, and its pH is measured by use of a pH meter.
13. Rapid Silicate Analysis: 0.10 Gram sample is fused with Lithium Metaborate, and dissolved in HNO<sub>3</sub>.  
The solution is analyzed by Atomic Absorption for SiO<sub>2</sub>, Al<sub>2</sub>O<sub>3</sub>, Fe<sub>2</sub>O<sub>3</sub>, MgO, CaO, Na<sub>2</sub>O, K<sub>2</sub>O, TiO<sub>2</sub>, P<sub>2</sub>O<sub>5</sub>, and MnO.
14. Tin: 0.50 Gram sample is sublimated by fusion with Ammonium Iodide, and dissolved.  
The resulting solution is extracted into TOPO/MIBK and analyzed by Atomic Absorption spectroscopy.
15. Tungsten: 1.00 Gram sample is sintered with a carbonate flux, and dissolved.  
The resulting extract is analyzed colorimetrically, after reduction with Stannous Chloride, by use of Potassium Thiocyanate.

# Rossbacher Laboratory Ltd.

GEOCHEMICAL ANALYSTS & ASSAYERS

2229 S. SPRINGER AVE.,  
BURNABY, B. C.  
CANADA  
TELEPHONE: 299-6910

## CERTIFICATE OF ANALYSIS

CERTIFICATE NO. 83231-14

INVOICE NO.

DATE ANALYSED AUG, 1983

PROJECT 57050

TO: CANAMAX RESOURCES INC.  
601 - 535 THURLOW STREET  
VANCOUVER, B.C.

No.	Sample	pH	Mo	Cu	Ni	Co	Mn	% Fe	Ag	Zn	Pb	W	No.
01	83ZBP 66		-	-	-	-	-	-	-	-	-	NSS	01
02	P 67		-	-	-	-	-	-	-	-	-	200	02
03	T 68A		2	38	-	-	-	-	0.2	18	24	1	03
04	T 69		7	96	-	-	-	-	1.2	36	98	100	04
05	T 70		3	20	-	-	-	-	0.2	38	20	10	05
06	S 71		1	34	-	-	-	-	0.2	62	12	60	06
07	S 72		1	180	-	-	-	-	0.2	64	26	180	07
08	T 73		5	12	-	-	-	-	0.2	14	4	1	08
09	T 75		3	14	-	-	-	-	0.2	58	82	40	09
10	T 78		1	3460	-	-	-	-	1.6	10800	4	5	10
11	P 81		2	114	-	-	-	-	0.7	154	16	20	11
12	S 82		1	162	-	-	-	-	0.2	134	20	40	12
13	T 83		2	24	-	-	-	-	0.2	98	6	5	13
14	<del>T 84</del> NSS		1	NSS	-	-	-	-	-	-	-	30	14
15	T 87		1	16	-	-	-	-	0.2	104	8	5	15
16	T 88		1	114	28	10	520	3.0	0.4	166	58	60	16
17	T 90		5	58	-	-	-	-	0.2	82	4	-	17
18	P 91		-	-	-	-	-	-	-	-	-	10	18
19	P 92		4	30	32	8	90	0.8	0.2	18	4	-	19
20	P 93		3	36	-	-	-	-	0.2	34	4	-	20
21	<del>L 94</del> NSS		NSS	NSS	-	-	-	-	-	-	-	10	21
22	T 95		6	110	-	-	-	-	0.4	58	11	-	22
23	T 96		4	640	-	-	-	-	0.8	30	38	-	23
24	L 97		1	114	34	14	2880	4.4	0.2	150	28	1	24
25	T 98		8	18	-	-	-	-	0.4	32	14	1	25
26	T 99		7	14	-	-	-	-	0.2	54	8	1	26
27	T 100		3	36	-	-	-	-	0.2	56	12	20	27
28	T 101		5	28	-	-	-	-	0.2	48	6	60	28
29	T 102		7	12	-	-	-	-	0.2	20	6	-	29
30	T 103		6	10	-	-	-	-	0.2	20	8	-	30
31	STD D		2	122	-	-	-	-	1.2	480	102	-	31
32													32
33													33
34													34
35													35
36													36
37													37
38													38
39													39
40													40

⊗ NOT SUFFICIENT SAMPLE.  
VALUES IN PPM, UNLESS NOTED OTHERWISE.

Certified by

*J. Rossbach*

# Rossbacher Laboratory Ltd.

GEOCHEMICAL ANALYSTS & ASSAYERS

2225 S. SPRINGER AVE.,  
BURNABY, B. C.  
CANADA  
TELEPHONE: 299-6910

## CERTIFICATE OF ANALYSIS

TO: CANAMAX RESOURCES INC.  
601 - 535 THURLOW STREET  
VANCOUVER, B.C.

CERTIFICATE NO. 83231-14  
INVOICE NO.  
DATE ANALYSED 83/08/18  
PROJECT 57050

No.	Sample	pH	Mo	Cu	PPB FL					No.
01	832BP66				10					01
02	P67				10					02
03	T68A				10					03
04	T69				5500					04
05	T70				10					05
06	S71				10					06
07	S72				10					07
08	T73				10					08
09	T74				MISSING					09
10	832BT75				10					10
11	76				MISSING					11
12	77				MISSING					12
13	78				180					13
14	79				MISSING					14
15	80				MISSING					15
16	P81				10					16
17	S82				10					17
18	T83				10					18
19	T84				10					19
20	T85				MISSING					20
21	P86				MISSING					21
22	T87				10					22
23	T88				10					23
24	T89				MISSING					24
25	T90				10					25
26	P91				10					26
27	P92				10					27
28	P93				10					28
29	L94				10					29
30	T95				10					30
31	T96				270					31
32	L97				10					32
33	T98				10					33
34	T99				10					34
35	T100				10					35
36	T101				10					36
37	T102				10					37
38	T103				10					38
39										39
40										40

VALUES IN PPM, UNLESS NOTED OTHERWISE.

Certified by

*P. Rossbacher*

# Rossbacher Laboratory Ltd.

GEOCHEMICAL ANALYSTS & ASSAYERS

2225 S. SPRINGER AVE.,  
 BURNABY, B. C.  
 CANADA  
 TELEPHONE: 299-6910

## CERTIFICATE OF ANALYSIS

**CANAMAX RESOURCES INC.**

601 - 535 THURLOW ST.

VANCOUVER, B.C. V6E 3L6

CERTIFICATE NO. **83231-15B**

INVOICE NO.

DATE ANALYSED **JULY 1983**

PROJECT **57058**

TO:

No.	Sample	pH	Mo	Cu	Ag	Zn	Pb	W	<sup>ppm</sup> Au				No.
01	83 ZBT 68B		1	52	0.2	60	28		10				01
02													02
03													03
04													04
05													05
06													06
07													07
08													08
09													09
10													10
11													11
12													12
13													13
14													14
15													15
16													16
17													17
18													18
19													19
20													20
21													21
22													22
23													23
24													24
25													25
26													26
27													27
28													28
29													29
30													30
31													31
32													32
33													33
34													34
35													35
36													36
37													37
38													38
39													39
40													40

VALUES IN PPM UNLESS NOTED OTHERWISE.

Certified by

*J. Rossbach*

# Rossbacher Laboratory Ltd.

GEOCHEMICAL ANALYSTS & ASSAYERS

2225 S. SPRINGER AVE.,  
BURNABY, B. C.  
CANADA  
TELEPHONE: 299-6910

## CERTIFICATE OF ANALYSIS

**CANAMAX RESOURCES INC.**

TO: 601 - 535 THURLOW ST.  
VANCOUVER, B.C. V6E 3L6

CERTIFICATE NO. 83231-15A

INVOICE NO.

DATE ANALYSED 8/10/09

PPB PROJECT 57088

No.	Sample	pH	Mo	Cu	Ag	Zn	Pb	W	Au				No.
01	83ZBS 104		2	38	0.2	102	14	10	10				01
02	T105		1	8	0.2	82	12	-	10				02
03	06		7	36	0.2	22	2	-	10				03
04	07		4	8	0.2	8	2	-	10				04
05	08		7	8	0.2	10	2	-	10				05
06	09		8	12	0.2	40	8	-	10				06
07	S 110		1	12	0.2	10	2	1	10				07
08	11		1	8	0.2	12	2	1	10				08
09	12		1	10	0.2	24	4	35	10				09
10	83ZBS 113		1	26	0.2	42	8	20	10				10
11	14		2	42	0.2	86	14	20	10				11
12	15		1	22	0.2	76	14	20	10				12
13	16		1	18	0.2	100	20	15	10				13
14	17		1	16	0.2	62	10	5	10				14
15	18		1	16	0.2	30	6	20	10				15
16	19		1	18	0.2	56	10	50	10				16
17	NSS 20		1	32	0.2	70	14	5	10				17
18	83ZBS 121		1	24	0.2	84	16	5	10				18
19	GW 2		6	146	0.8	140	90	15	-				19
20													20
21													21
22													22
23													23
24													24
25													25
26	NSS												26
27													27
28													28
29													29
30													30
31													31
32													32
33													33
34													34
35													35
36													36
37													37
38													38
39													39
40													40

VALUES IN PPM UNLESS NOTED OTHERWISE.

Certified by

*J. Rossbach*

# Rossbacher Laboratory Ltd.

GEOCHEMICAL ANALYSTS & ASSAYERS

2225 S. SPRINGER AVE.,  
BURNABY, B. C.  
CANADA  
TELEPHONE: 299-6910

## CERTIFICATE OF ANALYSIS

TO: AMAXI

CERTIFICATE NO. 83231-29

INVOICE NO.

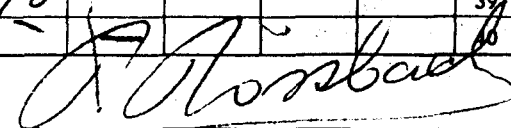
DATE ANALYSED 83/07/27

PROJECT 57080

No.	Sample	pH	Mo	Cu	Ag	Zn	Pb	W	Au	As		No.
01	83 RES 404		1	58	0.4	122	22	-	10	-		01
02	ZES 410		2	96	0.2	94	24	-	10	-		02
03	411		1	24	0.4	242	16	-	10	-		03
04	412		1	192	0.2	412	42	-	10	-		04
05	413		1	74	0.2	214	28	-	10	-		05
06	414		1	16	0.2	48	6	-	10	-		06
07	415		1	24	0.2	68	12	-	10	-		07
08	416		1	22	0.4	80	28	-	10	-		08
09	417		1	48	0.2	88	24	-	10	-		09
10	83 ZES 418		1	24	0.8	92	28	-	10	-		10
11	419		1	42	0.4	94	34	-	10	-		11
12	420		1	22	0.2	58	12	-	10	-		12
13	421		1	48	0.2	76	26	-	10	-		13
14	422		1	24	0.2	98	20	-	10	-		14
15	423		1	80	0.2	92	18	-	10	-		15
16	424		1	60	0.2	176	16	-	10	-		16
17	425		1	38	0.2	120	18	-	10	-		17
18	426		1	64	0.2	118	14	-	10	-		18
19	83 ZES 427		1	24	0.2	188	28	-	10	-		19
20	STD B		27	138	1.0	140	100	-	-	-		20
21	83 ZES 428		3	38	0.2	78	18	-	60	-		21
22	429		1	68	0.2	98	10	-	30	-		22
23	430		1	100	0.2	52	4	-	10	-		23
24	431		1	166	0.2	42	4	-	10	-		24
25	432		2	72	0.2	66	2	-	12	-		25
26	433		2	68	0.2	64	8	-	12	-		26
27	434		8	62	0.2	76	64	-	10	-		27
28	435		1	24	0.2	106	64	-	10	-		28
29	436		1	10	0.2	48	22	-	12	-		29
30	83 ZES 437		1	136	0.2	92	26	-	80	-		30
31	438		1	38	0.2	48	10	-	10	-		31
32	439		1	22	0.2	40	4	-	240	-		32
33	440		1	180	0.2	180	22	-	10	-		33
34	441		1	22	0.2	96	22	-	10	-		34
35	442		1	48	0.2	30	8	-	20	-		35
36	443		5	86	0.4	88	18	-	10	-		36
37	444		3	24	0.	82	16	-	20	-		37
38	445		3	44	0.4	114	56	-	20	-		38
39	83 ZES 446		4	134	0.2	190	16	-	10	-		39
40	STD B		28	144	1.0	136	98	-	-	-		40

VALUES IN PPM UNLESS NOTED OTHERWISE.

Certified by



# Rossbacher Laboratory Ltd.

GEOCHEMICAL ANALYSTS & ASSAYERS

2225 S. SPRINGER AVE.,  
BURNABY, B. C.  
CANADA  
TELEPHONE: 299-6910

## CERTIFICATE OF ANALYSIS

CERTIFICATE NO. 83231-40

INVOICE NO.

DATE ANALYSED 83/07/27

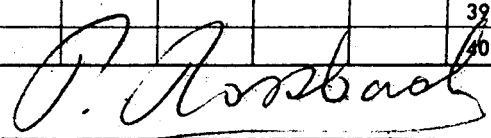
PROJECT DRAGON<sup>50</sup> LAKE

TO: CANAMAX RESOURCES INC.  
601 - 535 THURLOW ST.  
VANCOUVER, B.C. V5E 2G4

No.	Sample	pH	Mo	Sc	W	Au							No.
01	83 ZEP 405				60	40							01
02	406				1	10							02
03	83 ZEP 407				70	10							03
04													04
05													05
06													06
07													07
08													08
09													09
10													10
11													11
12													12
13													13
14													14
15													15
16													16
17													17
18													18
19													19
20													20
21													21
22													22
23													23
24													24
25													25
26													26
27													27
28													28
29													29
30													30
31													31
32													32
33													33
34													34
35													35
36													36
37													37
38													38
39													39
40													40

VALUES IN PPM UNLESS NOTED OTHERWISE.

Certified by



# Rossbacher Laboratory Ltd.

GEOCHEMICAL ANALYSTS & ASSAYERS

2225 S. SPRINGER AVE.,  
BURNABY, B. C.  
CANADA  
TELEPHONE: 299-6910

## CERTIFICATE OF ANALYSIS

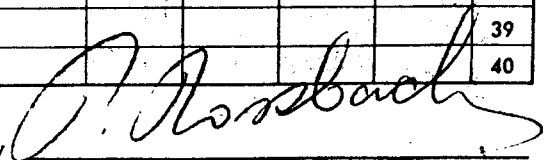
TO: **AMAX CANAMAX RESOURCES INC.**  
601 - 535 THURLOW ST.  
VANCOUVER, B.C. V6E 3L6

CERTIFICATE NO. **83231-1**  
INVOICE NO.  
DATE ANALYSED **83/07/20**  
PROJECT **57080**

No.	Sample	pH	Mo	Cu	Ag	Zn	Pb	Au	No.
01	83 RES 447		1	16	0.2	60	12	10	01
02	452		1	24	0.4	30	6	10	02
03	453		2	36	0.2	50	10	10	03
04	454		1	38	0.2	72	16	10	04
05	455		1	26	0.2	52	10	10	05
06	456		1	26	0.2	62	14	10	06
07	457		1	16	0.2	40	12	10	07
08	458		1	38	0.2	100	14	10	08
09	459		1	38	0.2	110	18	10	09
10	83 RES 460		1	24	0.2	76	12	10	10
11	461		1	20	0.2	58	12	10	11
12	462		1	22	0.2	54	10	10	12
13	463		1	16	0.2	48	8	40	13
14	464		1	26	0.2	86	8	10	14
15	465		1	44	0.2	84	16	10	15
16	466		1	22	0.2	88	22	10	16
17	467		1	20	0.2	78	12	10	17
18	Z 468		1	16	0.2	82	10	10	18
19	83 RES 469		1	30	0.4	108	14	10	19
20	STD C		16	166	0.8	114	72	-	20
21	83 RES 470		1	26	0.4	112	18	10	21
22	Z 471		1	26	0.4	114	20	10	22
23	472		1	26	0.2	136	26	70	23
24	473		1	18	0.2	80	16	10	24
25	474		1	18	0.2	76	16	10	25
26	475		2	84	0.4	136	24	10	26
27	476		1	24	0.2	68	10	10	27
28	477		1	64	0.2	70	14	10	28
29	478		1	56	0.2	142	58	10	29
30	83 RES 479		1	58	0.2	98	32	10	30
31	480		1	40	0.4	96	20	10	31
32	481		1	36	0.2	130	32	10	32
33	482		1	18	0.2	110	20	10	33
34	483		1	24	0.2	106	32	10	34
35	484		1	16	0.2	84	18	10	35
36	485		1	22	0.2	96	14	10	36
37	486		1	18	0.2	118	16	10	37
38	Z 487		2	32	0.2	116	22	10	38
39	83 RES 488		1	48	0.4	64	22	10	39
40	STD C		16	166	0.8	114	78	-	40

VALUES IN PPM UNLESS NOTED OTHERWISE.

Certified by



# Rössbacher Laboratory Ltd.

GEOCHEMICAL ANALYSTS & ASSAYERS

2225 S. SPRINGER AVE.,  
BURNABY, B. C.  
CANADA  
TELEPHONE: 299-6910

## CERTIFICATE OF ANALYSIS

TO: **AMAX CANAMAX RESOURCES INC.**

601 - 535 THURLOW ST.  
VANCOUVER, B.C. V6E 3V

CERTIFICATE NO. **83231-30**

INVOICE NO.

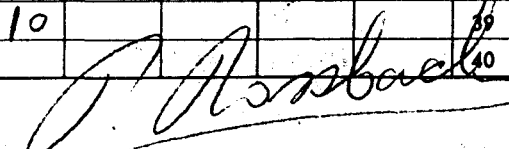
DATE ANALYSED **83/08/04**

PROJECT **57020**

No.	Sample	pH	Mo	Cu	Ag	Zn	Pb	W	ppm Au	No.
01	83 RES 489		1	32	0.2	48	16	-	10	01
02	490		1	16	0.2	68	10	-	10	02
03	491		1	36	0.2	104	134	-	10	03
04	492		1	32	0.2	70	24	-	10	04
05	493		2	50	0.2	104	16	-	10	05
06	494		1	34	0.2	70	16	-	10	06
07	495		2	20	0.2	88	42	-	10	07
08	496		2	20	0.2	144	22	-	10	08
09	497		1	26	0.2	124	20	-	10	09
10	83 RES 498		1	22	0.2	82	14	-	10	10
11	499		1	54	0.6	68	48	-	10	11
12	500		1	18	0.2	82	10	-	10	12
13	501		1	18	0.2	44	6	-	10	13
14	502		1	14	0.2	22	4	-	10	14
15	503		1	34	0.2	76	12	-	10	15
16	504		1	20	0.2	68	6	-	10	16
17	505		1	32	0.2	60	8	-	10	17
18	506		1	24	0.2	60	8	-	10	18
19	83 RES 507		1	38	0.2	34	22	-	10	19
20	STD C		16	174	0.6	116	86	-	-	20
21	83 RES 508		3	40	0.2	12	8	-	10	21
22	509		1	20	0.2	74	18	-	10	22
23	510		1	18	0.2	38	8	-	10	23
24	511		1	24	0.2	42	8	-	10	24
25	512		3	24	0.4	40	18	-	10	25
26	513		1	18	0.2	68	16	-	10	26
27	514		1	10	0.2	52	18	-	10	27
28	515		1	8	0.2	66	12	-	10	28
29	516		1	10	0.2	60	10	-	10	29
30	83 RES 517		1	10	0.2	52	10	-	10	30
31	518		1	6	0.2	66	16	-	10	31
32	519		1	38	0.2	158	42	-	10	32
33	520		1	46	0.2	62	10	-	10	33
34	521		1	10	0.2	42	6	-	10	34
35	522		1	36	0.2	118	28	-	10	35
36	523		1	26	0.2	84	10	-	10	36
37	524		1	14	0.2	72	12	-	10	37
38	525		1	20	0.2	44	10	-	10	38
39	83 RES 526		2	106	0.8	126	72	-	10	39
40	527 C		16	180	0.6			-		40

VALUES IN PPM UNLESS NOTED OTHERWISE.

Certified by



# Rossbacher Laboratory Ltd.

GEOCHEMICAL ANALYSTS & ASSAYERS

2225 S. SPRINGER AVE.,  
BURNABY, B. C.  
CANADA  
TELEPHONE: 299-6910

## CERTIFICATE OF ANALYSIS

TO: **AMAX CANAMAX RESOURCES INC.**  
601 - 535 THURLOW ST.  
VANCOUVER, B. C. V. 6T 1V1

CERTIFICATE NO. **83231-31**  
INVOICE NO.  
DATE ANALYSED **83/07/25**

PDB PROJECT **57020**

No.	Sample	pH	Mo	Cu	Ag	Zn	Pb	W	Au			No.
01	83 RES 527		1	40	0.2	240	126	15	10			01
02	528		1	70	0.4	46	132	1	10			02
03	529		1	14	0.2	28	12	60	10			03
04	530		1	58	0.2	54	12	60	10			04
05	531		9	430	0.8	70	4	3600	10			05
06	532		1	40	0.4	56	12	25	10			06
07	533		1	20	0.2	50	16	35	10			07
08	534		1	26	0.2	76	14	30	10			08
09	535		1	10	0.2	50	12	20	10			09
10	83 RES 536		1	14	0.2	66	12	35	10			10
11	537		4	50	0.2	136	40	20	10			11
12	538		2	42	0.2	110	44	20	10			12
13	539		1	36	0.2	72	14	25	10			13
14	540		2	84	0.2	62	14	20	60			14
15	541		2	12	0.2	58	10	20	10			15
16	542		3	18	0.2	66	12	30	10			16
17	543		1	8	0.2	32	6	40	10			17
18	544		1	32	0.2	70	8	60	10			18
19	83 RES 545		1	18	0.2	54	6	20	10			19
20	STD B		30	148	10	142	102	15			w2	20
21	83 RES 546		3	34	0.2	72	14	80	10			21
22	547		1	8	0.2	22	6	60	10			22
23	548		1	18	0.2	58	12	40	10			23
24	549		3	18	0.2	66	14	40	10			24
25	550		2	144	1.6	58	114	600	300			25
26	551		1	174	2.0	62	74	2800	10			26
27	552		1	328	0.8	54	32	180	10			27
28	553		1	212	0.4	104	50	280	10			28
29	554		1	148	0.4	92	34	160	10			29
30	83 RES 555		1	24	0.2	104	18	60	10			30
31	556		1	84	1.4	186	800	50	10			31
32	557		1	34	0.2	134	46	25	10			32
33	558		1	44	0.2	136	44	20	10			33
34	559		1	20	0.2	62	26	60	10			34
35	560		1	22	0.2	100	26	60	10			35
36	561		3	22	0.2	60	54	60	10			36
37	562		3	86	0.2	46	26	180	160			37
38	563		1	28	0.2	66	16	140	10			38
39	83 RES 564		2	36	0.2	70	34	180	10			39
40	STD B		30	142	0.8	122	102	15				40

VALUES IN PPM. UNLESS NOTED OTHERWISE.

Certified by

*P. Rossbach*

# Rossbacher Laboratory Ltd.

GEOCHEMICAL ANALYSTS & ASSAYERS

2225 S. SPRINGER AVE.,  
BURNABY, B. C.  
CANADA  
TELEPHONE: 299-6910

## CERTIFICATE OF ANALYSIS

TO: **AMAX CANAMAX RESOURCES INC.**  
601 - 535 THURLOW ST.  
VANCOUVER, B.C. V6E 3L6

CERTIFICATE NO. **83231-32**  
INVOICE NO.  
DATE ANALYSED **83/07/26**  
PROJECT **57020**

No.	Sample	pH	Mo	Cu	Ag	Zn	Pb	Au					No.
01	83 ZES 565		1	24	0.2	66	18	10					01
02	566		1	26	0.2	116	18	10					02
03	567		2	24	0.2	72	8	10					03
04	568		1	18	0.2	38	8	10					04
05	569		1	22	0.2	82	14	10					05
06	570		1	24	0.2	86	14	10					06
07	571		1	52	0.4	148	80	10					07
08	572		2	26	0.2	110	20	10					08
09	573		2	28	0.2	224	30	10					09
10	83 ZES 574		1	18	0.2	36	4	10					10
11	575		1	22	0.2	72	10	10					11
12	576		1	22	0.2	50	6	10					12
13	577		1	14	0.2	46	10	10					13
14	578		1	10	0.2	42	10	10					14
15	579		1	20	0.2	84	14	10					15
16	580		1	20	0.2	66	14	10					16
17	581		1	24	0.2	88	20	10					17
18	582		1	20	0.2	104	16	10					18
19	83 ZES 583		1	30	0.2	50	12	10					19
20	STD B		28	146	1.0	154	104	-					20
21	83 ZES 584		2	176	0.2	80	12	10					21
22	585		2	30	0.2	98	20	10					22
23	586		2	24	0.2	108	16	10					23
24	587		2	24	0.2	98	22	10					24
25	588		1	18	0.2	52	8	10					25
26	589		1	22	0.2	66	14	10					26
27	590		1	10	0.2	76	6	10					27
28	591		1	13	0.2	46	10	10					28
29	592		1	14	0.2	48	6	10					29
30	83 ZES 593		1	18	0.2	24	8	10					30
31	594		1	22	0.2	70	6	10					31
32	595		1	14	0.2	92	6	10					32
33	596		1	48	0.2	98	16	10					33
34	597		1	20	0.2	80	8	10					34
35	598		1	18	0.2	57	12	10					35
36	599		1	22	0.2	50	6	10					36
37	600		1	22	0.2	54	4	10					37
38	601		1	14	0.2	44	6	10					38
39	83 ZES 602		1	22	0.2	74	6	10					39
40	STD B		30	148	1.0	148	100	-					40

VALUES IN PPM UNLESS NOTED OTHERWISE.

Certified by 

# Rossbacher Laboratory Ltd.

GEOCHEMICAL ANALYSTS & ASSAYERS

2225 S. SPRINGER AVE.,  
BURNABY, B. C.  
CANADA  
TELEPHONE: 299-6910

## CERTIFICATE OF ANALYSIS

TO: **AMAX CANAMAX RESOURCES INC.**

601 - 535 THURLOW ST.  
VANCOUVER, B.C. V6E 3V6

CERTIFICATE NO. **83231-33**

INVOICE NO.

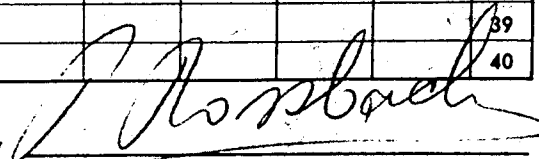
DATE ANALYSED **JULY 1983**

PROJECT **57020**

No.	Sample	pH	Mo	Cu	Ag	Zn	Pb	Au				No.
01	83 RES 603		2	20	0.2	76	18	10				01
02	604		1	22	0.2	60	14	10				02
03	605		1	10	0.2	34	8	10				03
04	606		1	14	0.2	44	10	10				04
05	607		1	24	0.2	60	10	10				05
06	608		1	18	0.2	34	10	10				06
07	609		1	10	0.2	30	8	10				07
08	610		1	14	0.2	32	4	10				08
09	611		1	20	0.2	66	10	10				09
10	83 RES 612		1	16	0.2	68	12	10				10
11	613		6	30	0.4	136	50	10				11
12	614		1	26	0.4	80	18	10				12
13	615		1	26	0.4	90	18	10				13
14	616		1	24	0.2	56	12	10				14
15	617		1	42	0.4	74	14	10				15
16	618		1	22	0.2	50	8	10				16
17	619		1	10	0.2	24	4	10				17
18	620		1	30	0.2	50	20	10				18
19	83 RES 621		1	28	0.4	48	14	10				19
20	STD C		16	180	0.8	120	90	10				20
21	83 RES 622		3	52	0.2	88	20	10				21
22	623		2	32	0.2	58	16	10				22
23	624		1	26	0.2	102	24	10				23
24	625		1	26	0.2	52	12	10				24
25	626		1	96	0.2	116	50	60				25
26	627		1	32	0.2	84	32	10				26
27	628		1	42	0.2	116	34	10				27
28	629		1	20	0.2	84	12	10				28
29	630		1	14	0.2	30	6	10				29
30	83 RES 631		1	18	0.2	40	10	10				30
31	632		2	64	0.2	66	18	10				31
32	633		1	10	0.2	22	4	10				32
33	634		1	48	0.2	84	18	10				33
34	635		1	18	0.2	32	4	10				34
35	636		2	100	0.2	52	38	10				35
36	637		3	30	0.2	60	10	10				36
37	638		2	26	0.2	54	14	10				37
38	639		2	26	0.2	38	12	10				38
39	83 RES 640		1	26	0.2	50	14	10				39
40	STD C				0.8	136	106	-				40

VALUES IN PPM UNLESS NOTED OTHERWISE.

Certified by



# Rossbacher Laboratory Ltd.

GEOCHEMICAL ANALYSTS & ASSAYERS

2225 S. SPRINGER AVE.,  
BURNABY, B. C.  
CANADA  
TELEPHONE: 299-6910

## CERTIFICATE OF ANALYSIS

TO: AMAX

CERTIFICATE NO. 83231-34

INVOICE NO.

DATE ANALYSED 83/07/27

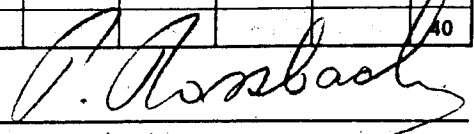
PROJECT 57050

PP3

No.	Sample	pH	Mo	Cu	Ag	Zn	Pb	Au	As				No.
01	83 RES 641		4	74	0.2	38	30	10	12				01
02	642		3	78	1.0	66	32	10	20				02
03	643		1	36	0.2	82	20	10	52				03
04	644		2	34	0.2	80	16	10	26				04
05	645		1	24	0.2	74	14	10	16				05
06	646		2	18	0.2	52	16	10	18				06
07	647		1	38	0.2	58	18	10	20				07
08	648		1	94	0.2	70	34	10	16				08
09	649		1	40	0.2	34	12	10	290				09
10	83 RES 650		1	34	0.2	76	14	10	36				10
11	651		3	24	0.2	74	14	10	24				11
12	652		3	22	0.2	66	12	10	28				12
13	653		3	40	0.2	94	18	10	34				13
14	654		2	12	0.6	32	6	10	10				14
15	655		1	36	0.2	80	14	10	56				15
16	656		1	40	0.2	50	12	10	16				16
17	657		1	40	0.2	74	18	10	38				17
18	658		1	34	0.2	64	16	10	36				18
19	83 RES 659		1	18	0.2	40	10	10	8				19
20	STD C		16	176	0.6	108	80	-	8				20
21	83 RES 660		1	34	0.2	102	16	10	24				21
22	661		1	18	0.2	38	6	10	8				22
23	662		1	20	0.2	106	18	10	18				23
24	663		1	20	0.2	70	20	10	10				24
25	664		1	20	0.2	94	20	10	8				25
26	665		1	14	0.2	78	18	10	12				26
27	666		1	34	0.2	116	24	10	16				27
28	667		1	14	0.2	68	14	10	16				28
29	668		1	12	0.2	52	14	10	28				29
30	83 RES 669		1	14	0.2	34	20	10	14				30
31	670		2	14	0.2	50	8	10	20				31
32	671		3	40	0.2	108	22	10	32				32
33	672		3	42	0.2	120	20	10	30				33
34	673		4	42	0.2	142	16	10	50				34
35	674		3	26	0.2	76	10	10	22				35
36	675		3	30	0.4	82	34	10	36				36
37	676		2	78	0.2	106	34	10	40				37
38	677		2	24	0.2	86	16	10	26				38
39	83 RES 678		2	44	0.4	100	44	10	26				39
40	STD C		18	182	0.8	122	90	-	14				40

VALUES IN PPM UNLESS NOTED OTHERWISE.

Certified by



# Rossbacher Laboratory Ltd.

2225 S. SPRINGER AVE.,  
BURNABY, B. C.  
CANADA  
TELEPHONE: 299-6910

GEOCHEMICAL ANALYSTS & ASSAYERS

## CERTIFICATE OF ANALYSIS

TO: **AMAX**

CERTIFICATE NO. **83231-35**

INVOICE NO.

DATE ANALYSED **83/07/27**

PROJECT **57050**

PPB

No.	Sample	pH	Mo	Cu	Ag	Zn	Pb	Au	As			No.
01	832ES 679		1	24	0.2	60	8	10	26			01
02	680		1	24	0.2	40	2	10	12			02
03	681		1	88	0.2	96	24	210	60			03
04	682		1	16	0.2	64	16	10	20			04
05	683		1	16	0.2	34	4	10	12			05
06	684		1	72	0.2	32	2	10	12			06
07	685		2	22	0.2	70	14	10	30			07
08	686		1	32	0.2	50	2	10	20			08
09	687		1	194	0.2	102	10	140	50			09
10	832ES 688		1	44	0.2	86	4	10	12			10
11	689		1	18	0.2	54	4	10	16			11
12	690		1	24	0.2	82	28	10	20			12
13	691		1	38	0.2	54	18	10	16			13
14	692		1	260	2.4	42	42	360	16			14
15	693		1	192	0.2	86	20	10	48			15
16	694		1	284	0.8	34	6	80	8			16
17	695		1	112	0.4	158	38	10	60			17
18	696		1	400	0.2	48	6	110	14			18
19	832ES 697		1	74	0.2	60	14	10	18			19
20	570 C		16	178	0.6	118	80	-	16			20
21	832ES 698		2	30	0.2	68	6	10	42			21
22	699		1	22	0.2	30	10	10	20			22
23	700		1	26	0.2	68	4	10	16			23
24	701		1	94	0.2	74	38	10	38			24
25	702		1	124	0.2	54	14	10	70			25
26	703		1	60	0.2	58	12	10	220			26
27	704		1	94	1.4	60	56	10	320			27
28	705		1	136	0.4	74	30	10	18			28
29	706		1	118	0.2	70	20	10	8			29
30	832ES 707		2	126	0.2	118	46	10	26			30
31	708		6	236	0.6	94	36	10	12			31
32	709		1	22	0.2	254	82	10	36			32
33	710		1	20	0.2	68	26	10	40			33
34	711		1	22	0.2	74	30	10	38			34
35	712		1	16	0.2	62	16	10	30			35
36	713		1	42	0.2	98	14	10	64			36
37	714		1	56	0.2	150	20	10	34			37
38	715		1	22	0.2	56	6	10	16			38
39	832ES 716		1	20	0.2	72	12	10	22			39
40	STD B		28	144	1.0	140	100	-	24			40

VALUES IN PPM UNLESS NOTED OTHERWISE.

Certified by 

# Rossbacher Laboratory Ltd.

GEOCHEMICAL ANALYSTS & ASSAYERS

2225 S. SPRINGER AVE.,  
BURNABY, B. C.  
CANADA  
TELEPHONE: 299-6910

## CERTIFICATE OF ANALYSIS

TO: **AMAX CANAMAX RESOURCES INC.**  
601 - 535 THURLOW ST.  
VANCOUVER, B.C. V6E 3L6 *PPB*

CERTIFICATE NO. **83231-36**  
INVOICE NO.  
DATE ANALYSED **83/07/**  
PROJECT **57020**

No.	Sample	pH	Mo	Cu	Ag	Zn	Pb	Au					No.
01	83 RES 717		1	20	0.2	106	24	10					01
02	718		1	30	0.4	114	22	10					02
03	719		2	36	0.2	126	32	10					03
04	720		1	14	0.2	96	18	10					04
05	721		1	12	0.2	60	14	10					05
06	722		2	36	0.2	78	16	10					06
07	723		2	12	0.2	96	10	10					07
08	724		2	230	0.2	54	2	10					08
09	725		2	58	0.2	60	8	10					09
10	83 RES 726		2	16	0.2	80	8	10					10
11	727		1	46	0.2	108	16	10					11
12	728		2	32	0.2	104	24	10					12
13	83 RES 729		1	24	0.2	120	20	10					13
14													14
15													15
16													16
17													17
18													18
19													19
20													20
21													21
22													22
23													23
24													24
25													25
26													26
27													27
28													28
29													29
30													30
31													31
32													32
33													33
34													34
35													35
36													36
37													37
38													38
39													39
40													40

VALUES IN PPM UNLESS NOTED OTHERWISE.

Certified by

*G. Rossbacher*

# Rossbacher Laboratory Ltd.

GEOCHEMICAL ANALYSTS & ASSAYERS

2225 S. SPRINGER AVE.,  
 BURNABY, B. C.  
 CANADA  
 TELEPHONE: 299-6910

## CERTIFICATE OF ANALYSIS

CERTIFICATE NO. **83231-41**  
 INVOICE NO.  
 DATE ANALYSED **83/07/27**  
 PROJECT **50**

TO:

No.	Sample	pH	M	Sr	W	A <sub>u</sub>							No.
01	83 ZKP 494					10							01
02	495				1000	10							02
03	498				1400	10							03
04	499				900	10							04
05	500				280	10							05
06	501				40	10							06
07	83 ZKP 502				20	10							07
08													08
09													09
10													10
11													11
12													12
13													13
14													14
15													15
16													16
17													17
18													18
19													19
20													20
21													21
22													22
23													23
24													24
25													25
26													26
27													27
28													28
29													29
30													30
31													31
32													32
33													33
34													34
35													35
36													36
37													37
38													38
39													39
40													40

VALUES IN PPM UNLESS NOTED OTHERWISE.

Certified by P. Rossbach

# Rossbacher Laboratory Ltd.

GEOCHEMICAL ANALYSTS & ASSAYERS

2225 S. SPRINGER AVE.,  
BURNABY, B. C.  
CANADA  
TELEPHONE: 299-6910

## CERTIFICATE OF ANALYSIS

TO: CANAMAX RESOURCES INC.  
801 535 HURLOW ST.  
VANCOUVER, B.C. V6E 3L6  
VANCOUVER, B.C. V6E 3L6

CERTIFICATE NO. 83231-17  
INVOICE NO.  
DATE ANALYSED 8/07/19  
PROJECT ~~52028~~ DRAGON L

No.	Sample	pH	Mo	Cu	Ag	Zn	Pb	Nu				No.
01	83ZKS 496		3	38	0.2	74	32	10				01
02	97		4	900	0.2	38	24	10				02
03	503		2	540	1.2	182	2	600				03
04	510		1	680	1.0	158	8	400				04
05	11		1	122	0.2	50	2	10				05
06	12		2	286	0.4	98	12	160				06
07	13		1	38	0.2	62	2	10				07
08	14		2	82	0.4	102	26	10				08
09	15		3	80	0.2	120	38	10				09
10	83ZKS 416		1	50	0.2	72	8	10				10
11	17		1	48	0.2	54	8	10				11
12	18		1	24	0.2	26	2	10				12
13	19		1	44	0.2	44	4	10				13
14	20		1	62	0.2	56	4	10				14
15	21		1	22	0.2	82	8	960				15
16	22		2	36	0.2	116	16	10				16
17	23		1	280	0.2	64	8	10				17
18	24		1	140	0.2	92	10	10				18
19	83ZKS 425		2	38	0.2	86	16	10				19
20	STD D		2	116	4.0	490	100	10				20
21	83ZKS 426		3	44	0.2	106	16	10				21
22	27		3	36	0.2	98	14	10				22
23	28		3	28	0.2	72	10	20				23
24	29		2	30	0.2	96	10	10				24
25	30		2	24	0.2	78	6	10				25
26	31		2	20	0.2	86	10	10				26
27	32		4	70	0.2	198	22	10				27
28	33		1	72	0.2	88	42	10				28
29	34		2	32	0.2	54	10	10				29
30	83ZKS 435		2	20	0.2	58	22	10				30
31	36		2	42	0.2	82	24	10				31
32	37		2	48	0.2	74	10	10				32
33	38		2	50	0.2	68	34	10				33
34	39		2	30	0.2	132	16	10				34
35	40		2	42	0.2	70	6	10				35
36	41		2	18	0.2	100	14	10				36
37	42		3	22	0.2	78	12	10				37
38	43		2	22	0.2	64	6	10				38
39	83ZKS 444		1	28	0.2	38	8	10				39
40	STD D		2	122	4.0	500	100	-				40

VALUES IN PPM UNLESS NOTED OTHERWISE.

Certified by

# Rossbacher Laboratory Ltd.

GEOCHEMICAL ANALYSTS & ASSAYERS

2225 S. SPRINGER AVE.,  
BURNABY, B. C.  
CANADA  
TELEPHONE: 299-6910

## CERTIFICATE OF ANALYSIS

**CANAMAX RESOURCES INC.**

TO: 601 - 535 THURLOW ST.  
VANCOUVER, B.C. V6E 3L6

CERTIFICATE NO. 83231-18

INVOICE NO.

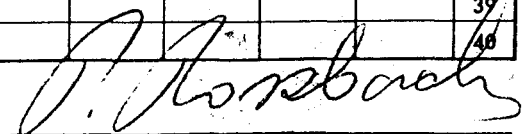
DATE ANALYSED 83/07/20

PROJECT 57058

No.	Sample	pH	Mo	Cu	Ag	Zn	Pb	<sup>113</sup> Xe	<del>As</del>					No.
01	83ZKS 545		2	74	0.2	168	4	10	-					01
02	46		1	106	0.2	82	20	130	-					02
03	47		2	50	0.2	62	16	10	-					03
04	48		3	100	0.2	122	18	10	-					04
05	49		2	100	0.2	74	10	10	-					05
06	50		2	90	0.6	134	4	10	-					06
07	51		2	216	0.6	234	8	10	-					07
08	52		1	18	0.2	56	8	10	-					08
09	53		1	14	0.2	48	8	20	-					09
10	83ZKS 554		1	22	0.2	56	6	10	-					10
11	55		1	20	0.2	36	4	10	-					11
12	56		1	30	0.2	108	24	10	-					12
13	57		1	22	0.4	44	18	10	-					13
14	58		1	52	0.2	96	20	10	-					14
15	59		1	104	0.2	44	8	10	-					15
16	60		1	18	0.2	64	12	10	-					16
17	61		1	18	0.2	68	18	10	-					17
18	62		1	18	0.2	112	12	10	-					18
19	83ZKS 563		1	28	0.2	78	16	10	-					19
20	STD B		26	130	1.0	140	98	-	-					20
21	83ZKS 564		1	28	0.2	32	8	10	-					21
22	65		1	14	0.2	22	6	10	-					22
23	66		2	30	0.2	68	16	10	-					23
24	67		2	32	0.2	94	24	10	-					24
25	68		1	80	0.2	64	40	10	-					25
26	69		2	24	0.2	70	16	10	-					26
27	70		2	48	0.2	72	8	10	-					27
28	71		1	124	0.2	80	40	10	-					28
29	72		3	120	0.2	110	20	10	-					29
30	83ZKS 573		1	44	0.2	62	12	10	-					30
31	74		3	94	0.2	92	20	10	-					31
32	75		3	134	0.2	80	8	10	-					32
33	76		17	62	0.2	58	10	10	-					33
34	77		2	200	0.2	76	10	40	-					34
35	78		1	48	0.2	70	14	10	-					35
36	79		1	52	0.2	38	6	10	-					36
37	80		1	10	0.2	40	6	10	-					37
38	81		1	22	0.2	58	8	10	-					38
39	83ZKS 582		1	70	0.6	54	12	10	-					39
40	TD B		26	188	1.0	138	96	-	-					40

VALUES IN PPM UNLESS NOTED OTHERWISE.

Certified by



# Rossbacher Laboratory Ltd.

GEOCHEMICAL ANALYSTS & ASSAYERS

2225 S. SPRINGER AVE.,  
BURNABY, B. C.  
CANADA  
TELEPHONE: 299-6910

## CERTIFICATE OF ANALYSIS

CERTIFICATE NO. 83231-18A

INVOICE NO.

DATE ANALYSED 83/08/01

PROJECT 57050

TO: AMAX MINERALS EXPLORATION  
601 - 535 THURLOW ST.  
VANCOUVER, B.C.

No.	Sample	pH	Mo	Cu	As					No.
01	83ZK5564				24					01
02	565				10					02
03	566				22					03
04	567				22					04
05	568				24					05
06	569				36					06
07	570				22					07
08	571				54					08
09	572				38					09
10	83ZK5573				20					10
11	574				200					11
12	575				20					12
13	576				18					13
14	577				56					14
15	578				48					15
16	579				10					16
17	580				12					17
18	581				12					18
19	83ZK5582				12					19
20	STD B				24					20
21										21
22										22
23										23
24										24
25										25
26										26
27										27
28										28
29										29
30										30
31										31
32										32
33										33
34										34
35										35
36										36
37										37
38										38
39										39
40										40

VALUES IN PPM UNLESS NOTED OTHERWISE.

Certified by

*P. Rossbach*

# Rossbacher Laboratory Ltd.

GEOCHEMICAL ANALYSTS & ASSAYERS

2225 S. SPRINGER AVE.,  
BURNABY, B. C.  
CANADA  
TELEPHONE: 299-6910

## CERTIFICATE OF ANALYSIS

**CANAMAX RESOURCES INC.**

TO: 601 - 535 THURLOW ST.  
VANCOUVER, B.C. V6E 3L6

CERTIFICATE NO. 83231-19

INVOICE NO.

DATE ANALYSED 83/07/20

PROJECT 57058

No.	Sample	pH	Mo	Cu	Ag	Zn	Pb	Au	As				No.
01	832KS 583		3	28	0.4	80	2	10					01
02	84		3	40	0.4	72	2	10					02
03	85		1	26	0.2	14	2	10					03
04	86		3	26	0.2	50	4	10					04
05	87		1	10	0.2	42	2	10					05
06	88		2	264	1.6	194	2	320					06
07	89		2	30	0.2	64	4	10					07
08	90		1	14	0.2	20	2	10					08
09	91		1	8	0.2	20	8	10					09
10	832KS 592		1	60	0.2	46	2	10					10
11	93		4	92	0.4	92	28	10					11
12	94		2	30	0.2	74	4	10					12
13	95		1	38	0.2	44	2	10					13
14	96		1	24	0.2	24	4	30					14
15	97		1	8	0.2	18	2	10					15
16	98		3	90	0.8	62	60	40					16
17	99		5	104	0.2	90	10	190					17
18	600		2	282	1.0	80	22	1600					18
19	832KS 601		1	72	0.2	108	42	10					19
20	STD C		20	186	0.8	118	88	✓					20
21	832KS 602		2	146	0.6	228	54	10					21
22	03		1	20	0.2	24	2	10	-				22
23	04		1	26	0.4	44	4	10	-				23
24	05		1	22	0.2	18	2	10	-				24
25	06		2	50	0.2	36	8	10	-				25
26	07		3	20	0.2	82	8	10	-				26
27	08		1	34	0.2	22	2	10	-				27
28	09		2	24	0.2	40	2	10	-				28
29	10		1	18	0.2	40	4	10	-				29
30	832KS 611		1	70	0.2	70	12	50	-				30
31	12		2	720	0.2	50	2	20	-				31
32	13		1	76	0.2	10	2	10	-				32
33	14		1	20	0.2	16	2	10	-				33
34	15		2	74	0.2	44	4	10	-				34
35	16		1	102	0.2	24	2	10	-				35
36	17		1	26	0.2	46	10	20	-				36
37	18		4	150	0.2	128	38	40	-				37
38	19		4	218	0.2	106	20	50	-				38
39	832KS 620		2	480	1.0	48	16	160	-				39
40	STD C		18	190	0.6	114	80	✓					40

VALUES IN PPM UNLESS NOTED OTHERWISE.

Certified by

*P. Rossbach*

# Rossbacher Laboratory Ltd.

GEOCHEMICAL ANALYSTS & ASSAYERS

2225 S. SPRINGER AVE.,  
BURNABY, B. C.  
CANADA  
TELEPHONE: 299-6910

## CERTIFICATE OF ANALYSIS

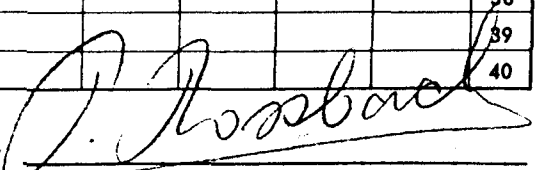
TO: AMAX MINERALS EXPLORATION  
601 - 535 THURLOW ST.  
VANCOUVER, B.C.

CERTIFICATE NO. 83231-19A  
INVOICE NO.  
DATE ANALYSED 83/08/02  
PROJECT 57050

No.	Sample	pH	Mo	Cu	As						No.
01	832KS583				14						01
02	584				8						02
03	585				4						03
04	586				14						04
05	587				14						05
06	588				4						06
07	589				16						07
08	590				6						08
09	591				6						09
10	832KS592				26						10
11	593				18						11
12	594				10						12
13	595				8						13
14	596				250						14
15	597				12						15
16	598				22						16
17	599				32						17
18	832KS600				16						18
19	601				16						19
20	STD C				8						20
21	602				16						21
22	603				-						22
23	604				-						23
24	605				-						24
25	606				-						25
26	607				-						26
27	608				-						27
28	609				-						28
29	610				-						29
30	832KS611				-						30
31	612				-						31
32	613				-						32
33	614				-						33
34	615				-						34
35	616				-						35
36	617				-						36
37	618				-						37
38	619				-						38
39	832KS620				-						39
40	STD C				-						40

VALUES IN PPM UNLESS NOTED OTHERWISE.

Certified by



# Rossbacher Laboratory Ltd.

GEOCHEMICAL ANALYSTS & ASSAYERS

2225 S. SPRINGER AVE.,  
BURNABY, B. C.  
CANADA  
TELEPHONE: 299-6910

## CERTIFICATE OF ANALYSIS

TO: **CANAMAX RESOURCES INC.**

601 - 535 THURLOW ST.  
VANCOUVER, B.C. V6E 3L6

CERTIFICATE NO. 83231-20

INVOICE NO.

DATE ANALYSED 83/07/20

PROJECT 57050

No.	Sample	pH	Mo	Cu	Ag	Zn	Pb	Au				wt	No.
01	83ZKS 621		2	800	7.8	426	6	780					01
02	22		1	750	1.2	40	8	800					02
03	23		1	350	0.2	52	10	70					03
04	24		1	256	0.2	54	6	40					04
05	25		2	200	0.2	58	4	10					05
06	26		1	12	0.2	48	8	10					06
07	27		1	26	0.2	20	6	10					07
08	28		1	16	0.2	50	4	10					08
09	29		1	14	0.2	40	8	10					09
10	832KS 630		1	24	0.2	18	4	10					10
11	31		1	12	0.2	28	2	10					11
12	32		2	36	0.2	74	26	10					12
13	33		1	8	0.2	32	6	10					13
14	34		1	22	0.4	30	6	10					14
15	35		1	42	0.4	106	28	10					15
16	36		1	48	0.4	46	2	10					16
17	37		1	58	0.4	32	10	10					17
18	38		1	26	0.2	90	6	10					18
19	832KS 639		1	118	0.4	124	32	100				9.09g	19
20	STD D		1	126	11.0	510	98	-					20
21	832KS 640		1	36	0.2	30	4	10					21
22	41		1	80	0.2	30	2	10					22
23	42		1	76	0.4	102	22	10					23
24	43		2	38	0.2	130	86	10					24
25	44		1	46	0.2	62	20	10					25
26	45		1	162	0.2	84	28	10					26
27	46		1	72	0.2	86	30	10					27
28	47		1	26	0.2	60	22	10					28
29	48		1	368	0.6	68	12	220				7.59g	29
30	832KS 649		1	18	0.2	28	4	10					30
31	50		2	50	0.2	114	18	10					31
32	51		1	30	0.2	42	4	10					32
33	52		1	16	0.2	56	2	10					33
34	53		1	48	0.2	84	34	10					34
35	54		1	24	0.2	102	6	10					35
36	55		1	20	0.2	162	4	10					36
37	56		1	112	0.6	1010	390	10					37
38	57		1	58	0.2	152	138	10					38
39	832KS 658		1	66	0.2	86	20	10					39
40	STD D		1	30	11.2	500	104	-					40

VALUES IN PPM UNLESS NOTED OTHERWISE.

Certified by

*P. Rossbach*

# Rossbacher Laboratory Ltd.

GEOCHEMICAL ANALYSTS & ASSAYERS

2225 S. SPRINGER AVE.,  
BURNABY, B. C.  
CANADA  
TELEPHONE: 299-6910

## CERTIFICATE OF ANALYSIS

TO: CANAMAX RESOURCES INC.

601 - 535 THURLOW ST.

VANCOUVER, B.C. V6E 3L6

CERTIFICATE NO. 83231-21

INVOICE NO.

DATE ANALYSED 83/07/19

PROJECT 57058

PP13

No.	Sample	pH	Mo	Cu	Ag	Zn	Pb	Au					No.
01	832KS 659		1	56	0.2	68	14	10					01
02	60		1	32	0.2	80	32	10					02
03	61		1	58	0.4	72	8	10					03
04	62		4	68	0.4	100	520	10					04
05	63		1	48	0.2	42	26	10					05
06	64		1	20	0.4	70	18	10					06
07	65		1	26	0.4	66	18	10					07
08	66		1	30	0.2	68	16	10					08
09	67		1	50	0.2	94	14	10					09
10	832KS 668		1	34	0.4	96	32	10					10
11	69		1	74	0.4	58	32	10					11
12	70		1	24	0.2	46	14	10					12
13	71		1	56	0.2	44	4	10					13
14	72		1	8	0.4	28	2	10					14
15	73		1	20	0.4	16	2	10					15
16	74		2	84	0.2	70	10	60					16
17	75		1	14	0.2	14	4	10					17
18	76		1	14	0.2	36	6	10					18
19	832KS 677		1	28	0.4	112	10	10					19
20	STD E		4	72	0.2	146	18	-					20
21	832KS 678		2	36	0.2	74	10	10					21
22	79		2	20	0.2	82	24	10					22
23	80		2	30	0.2	84	10	10					23
24	81		2	114	0.2	84	18	10					24
25	82		1	34	0.2	20	2	10					25
26	83		1	76	0.2	110	8	10					26
27	84		2	100	0.2	116	42	20					27
28	85		1	174	0.4	54	6	40			8.6 gms		28
29	86		1	104	0.2	32	2	10					29
30	832KS 687		1	68	0.2	72	8	10					30
31	88		4	476	0.2	100	12	10					31
32	89		2	376	0.8	140	4	170					32
33	90		2	100	0.2	140	10	10					33
34	91		1	10	0.2	32	8	10					34
35	92		1	30	0.4	38	14	10					35
36	93		1	20	0.2	86	44	10					36
37	94		1	18	0.6	86	36	10					37
38	95		2	32	0.2	100	18	10					38
39	832KS 696		1	24	0.2	42	8	10					39
40	STD E		4	70	0.2	150	16	-					40

VALUES IN PPM UNLESS NOTED OTHERWISE.

Certified by

# Rossbacher Laboratory Ltd.

GEOCHEMICAL ANALYSTS & ASSAYERS

2225 S. SPRINGER AVE.,  
BURNABY, B. C.  
CANADA  
TELEPHONE: 299-6910

## CERTIFICATE OF ANALYSIS

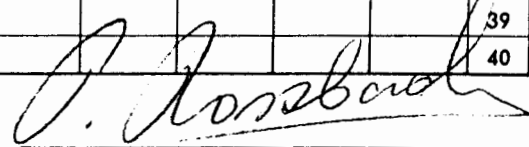
TO: **CANAMAX RESOURCES INC.**  
601 - 535 THURLOW ST.  
VANCOUVER, B.C. V6E 3L6

CERTIFICATE NO. **83231-22**  
INVOICE NO.  
DATE ANALYSED **83/07/20**  
PROJECT **57050**

No.	Sample	pH	Mo	Cu	Ag	Zn	Pb	Au						No.
01	832KS697		2	82	0.4	78	14	10						01
02	98		2	16	0.2	72	16	10						02
03	99		2	40	0.2	90	26	10						03
04	700		2	14	0.7	58	18	10						04
05	01		2	24	0.7	74	12	10						05
06	02		1	14	0.2	56	10	10						06
07	03		2	24	0.2	70	34	10						07
08	04		1	16	0.2	38	8	10						08
09	05		1	28	0.2	62	8	10						09
10	832KS606		2	16	0.2	122	52	10						10
11	07		2	12	0.2	86	16	10						11
12	08		1	16	0.2	60	12	10						12
13	09		1	24	0.2	66	10	10						13
14	10		1	22	0.2	60	8	10						14
15	11		1	28	0.2	120	18	10						15
16	832KS712		1	22	0.4	74	18	10						16
17	STD B		30	142	1.0	148	94	-						17
18														18
19														19
20														20
21														21
22														22
23														23
24														24
25														25
26														26
27														27
28														28
29														29
30														30
31														31
32														32
33														33
34														34
35														35
36														36
37														37
38														38
39														39
40														40

VALUES IN PPM UNLESS NOTED OTHERWISE.

Certified by



# Rossbacher Laboratory Ltd.

GEOCHEMICAL ANALYSTS & ASSAYERS

2225 S. SPRINGER AVE.,  
BURNABY, B. C.  
CANADA  
TELEPHONE: 299-6910

## CERTIFICATE OF ANALYSIS

TO: CANAMAX RESOURCES INC.

601 - 535 THURLOW ST.  
VANCOUVER, B.C. V6E 3L6

CERTIFICATE NO. 83231-16A

INVOICE NO.

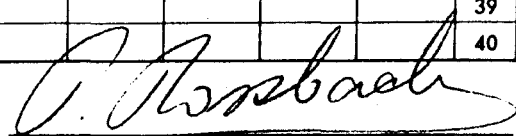
DATE ANALYSED 83/07/28

PROJECT 57058

No.	Sample	pH	Mo	Cu	Ni	Co	Mn	Fe	Ag	Zn	Pb	No.
01	832TT 1		-	-	-	-	-	-	-	-	-	01
02	2		-	-	-	-	-	-	-	-	-	02
03	3		-	-	-	-	-	-	-	-	-	03
04	4		-	-	-	-	-	-	-	-	-	04
05	5		-	-	-	-	-	-	-	-	-	05
06	6		2	46	4	2	80	0.4	7.4	10	750	06
07	7		3	64	4	2	80	0.2	19.2	8	1800	07
08	8		4	12	4	2	140	0.3	0.2	10	28	08
09	9		-	-	-	-	-	-	0.2	-	-	09
10	832TT 10		4	3400	22	34	870	7.6	2.8	56	2	10
11	11		8	770	28	20	910	4.9	0.4	46	2	11
12	12		8	174	24	12	6300	6.9	0.2	148	2	12
13	13		7	780	22	20	990	4.4	0.4	34	2	13
14	L14		8	34	28	12	570	2.6	0.2	98	22	14
15	L15		6	38	32	14	530	3.0	0.2	100	22	15
16	L16		6	42	30	10	360	3.0	0.2	112	24	16
17	L17		6	32	30	8	400	2.6	0.2	138	58	17
18	L18		10	32	28	10	430	2.6	0.2	132	54	18
19	852TT 22		-	-	-	-	-	-	0.2	2	8	19
20	STD C		18	174	54	12	180	1.3	0.6	112	80	20
21	832TT 23		10	780	18	18	400	710.0	1.4	54	146	21
22	24		-	-	-	-	-	-	-	-	-	22
23	25		6	-	30	24	1280	6.0	-	72	2	23
24	26		7	270	16	12	260	4.1	-	30	4	24
25	27		6	36	8	2	110	0.6	-	12	1040	25
26	28		-	-	-	-	-	-	-	-	-	26
27	29		4	-	6	6	810	4.4	-	28	8	27
28	30		8	-	18	18	960	4.9	-	58	2	28
29	31		4	1340	26	38	140	4.6	1.4	24	2	29
30	832TT 32		6	310	12	4	1150	4.2	1.0	28	16	30
31	33		6	96	10	6	280	2.2	0.4	30	50	31
32	852TT 34		6	40	6	4	240	1.2	0.2	12	4	32
33	STD C		18	180	52	12	170	1.4	0.6	108	80	33
34												34
35												35
36												36
37												37
38												38
39												39
40												40

VALUES IN PPM UNLESS NOTED OTHERWISE.

Certified by



# Rossbacher Laboratory Ltd.

GEOCHEMICAL ANALYSTS & ASSAYERS

2225 S. SPRINGER AVE.,  
BURNABY, B. C.  
CANADA  
TELEPHONE: 299-6910

## CERTIFICATE OF ANALYSIS

TO: AMAX MINERALS EXPLORATION  
601 - 535 THURLOW ST.  
VANCOUVER, B.C.

CERTIFICATE NO. 83231-16B  
INVOICE NO.  
DATE ANALYSED 83/08/08  
PROJECT 57058

No.	Sample	pH	Mo	Cu	W	Sn	PPB Au		No.
01	832TT 1				* INT	4			01
02	2				220				02
03	3				INT	16			03
04	4				10				04
05	5				INT				05
06	6				-				06
07	7				-				07
08	8				-	2			08
09	9				120	4	10		09
10	10				360		640		10
11	11				1		70		11
12	12				60		260		12
13	13				1		570		13
14	L14				60		10		14
15	T15				35		10		15
16	16				10		10		16
17	17				30		10		17
18	18				20		10		18
19	832TT 22				-	-			19
20					15 GW2				20
21	832TT 23				15		6800		21
22	24				-				22
23	25				1	12	1040		23
24	26				15	48	10		24
25	27				600	14	8600		25
26	28				600	1	20		26
27	29				2	2	20		27
28	30				1	6	250		28
29	31				-				29
30	32				-				30
31	33				-				31
32	832TT 34				-				32
33									33
34									34
35									35
36									36
37	* INT. (UNKNOWN ELEMENT INTERFERENCE)								37
38									38
39									39
40									40

VALUES IN PPM UNLESS NOTED OTHERWISE.

Certified by

*J. Rossbach*

# Rossbacher Laboratory Ltd.

GEOCHEMICAL ANALYSTS & ASSAYERS

2225 S. SPRINGER AVE.,  
BURNABY, B. C.  
CANADA  
TELEPHONE: 299-6910

## CERTIFICATE OF ANALYSIS

CERTIFICATE NO. 83231-16B

INVOICE NO.

DATE ANALYSED 83/08/20

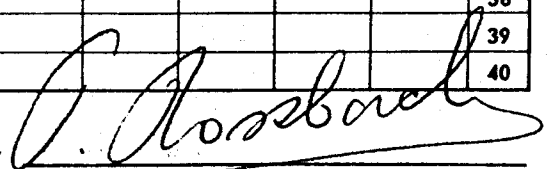
PROJECT 57050

TO: CANAMAX RESOURCES INC.  
601 - 535 THURLOW STREET  
VANCOUVER, B.C.

No.	Sample	pH	Mo	Cu	Sm	PPB Au				No.
01	832TT 1				4					01
02	T 3				16					02
03	T 8				2					03
04	T 9				4	10				04
05	T 10					640				05
06	T 11					70				06
07	T 12					260				07
08	T 13					570				08
09	L 14					10				09
10	832TL 15					10				10
11	L 16					10				11
12	L 17					10				12
13	L 18					10				13
14	832TT 23					6800				14
15	T 25				12	1040				15
16	T 26				48	10				16
17	T 27				14	8600				17
18	T 28				1	20				18
19	T 29				2	20				19
20	832TT 30				6	250				20
21										21
22										22
23										23
24										24
25										25
26										26
27										27
28										28
29										29
30										30
31										31
32										32
33										33
34										34
35										35
36										36
37										37
38										38
39										39
40										40

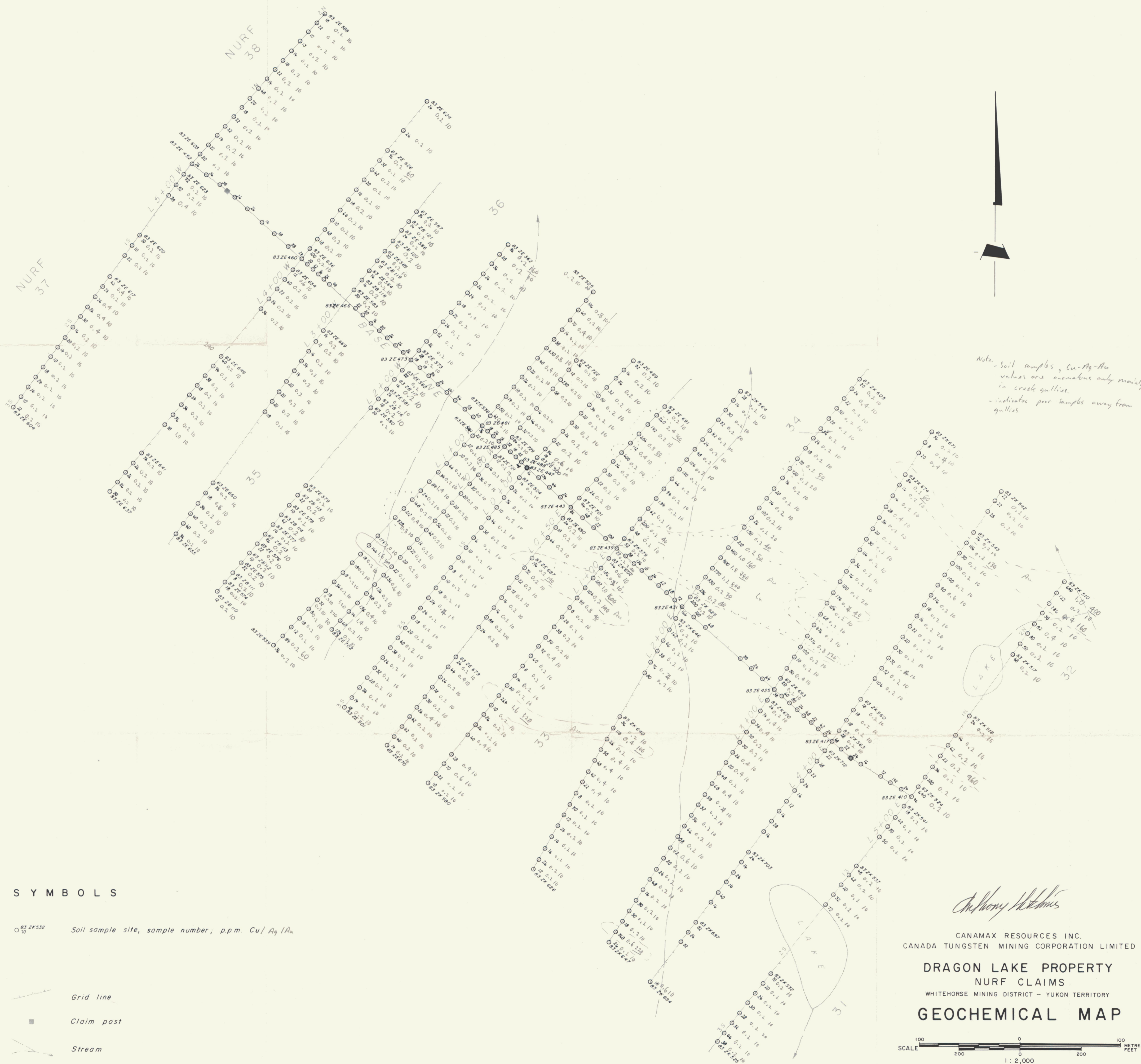
VALUES IN PPM, UNLESS NOTED OTHERWISE.

Certified by









Note - Soil samples, Cu-Ag-Au values are anomalous only mainly in creek gullies - indicates poor samples away from gullies.

**S Y M B O L S**

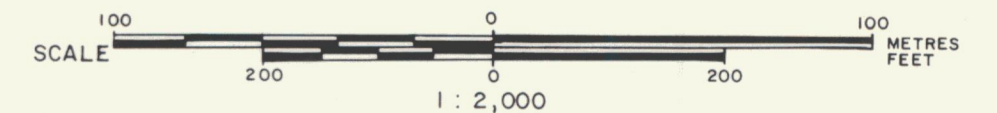
- 83ZE460/10 Soil sample site, sample number; p.p.m. Cu/Ag/Au
- Grid line
- Claim post
- ~ Stream

*Anthony Hitchins*

CANAMAX RESOURCES INC.  
CANADA TUNGSTEN MINING CORPORATION LIMITED

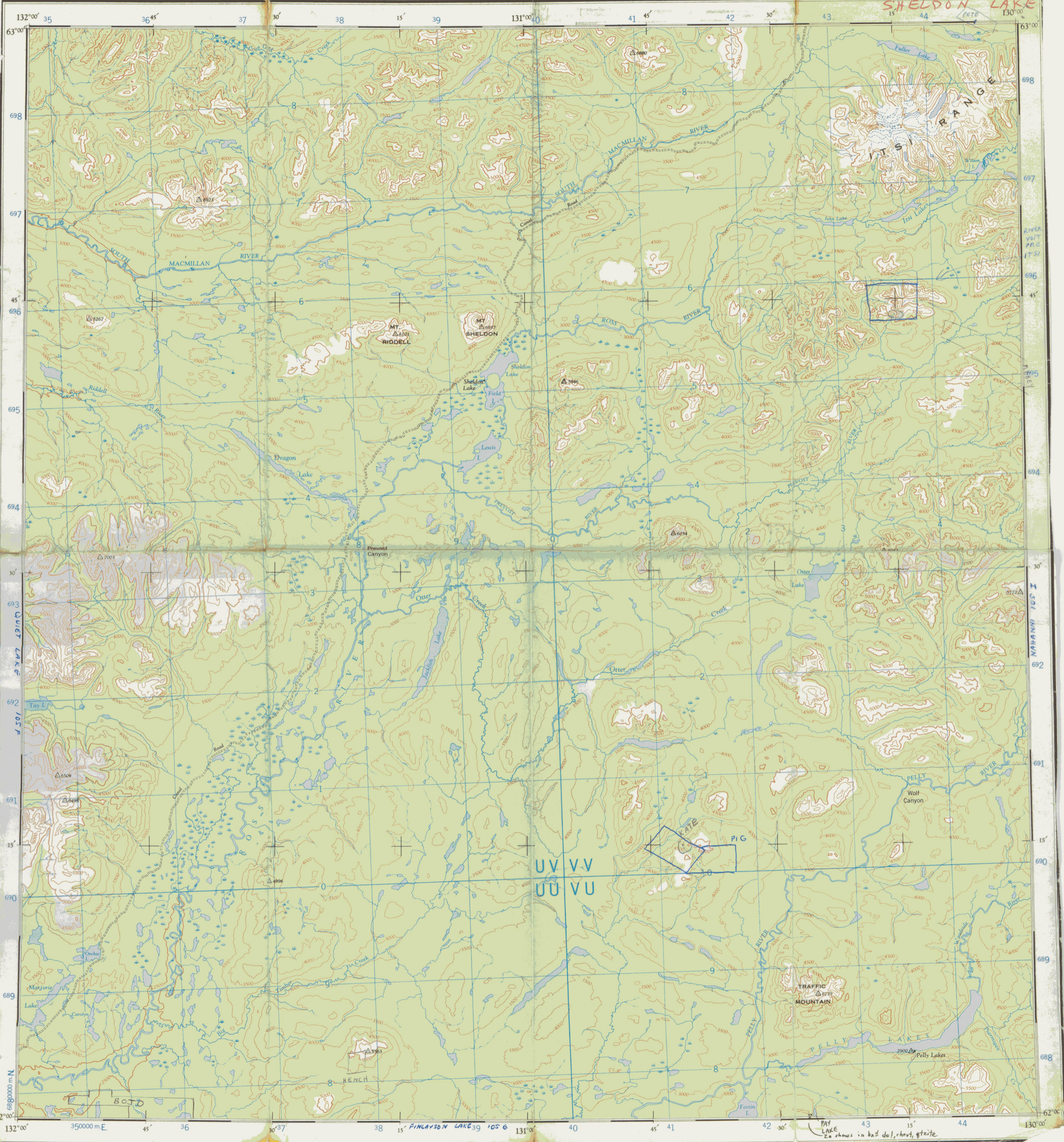
**DRAGON LAKE PROPERTY**  
NURF CLAIMS  
WHITEHORSE MINING DISTRICT - YUKON TERRITORY

**GEOCHEMICAL MAP**



To accompany 1983 Report by: A. C. Hitchins.

Vancouver — C.K.



SHELDON LAKE 1055

SHELDON LAKE

UV VV  
UU VU

PAY LAKE  
Zu zhuus in bas dol, chert, gteite