



ASSESSMENT REPORT
GEOLOGICAL MAPPING AND GEOCHEMICAL
SAMPLING

LATER 1-35 CLAIMS
(YA 75682 - YA 75716)

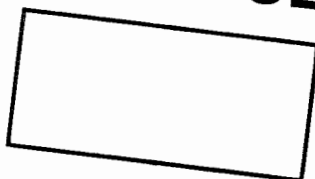
091526

WHITEHORSE MINING DISTRICT
NTS 105 D5

LATITUDE: 60°22'N
LONGITUDE: 135°31'W

JUNE 2ND - AUGUST 20TH, 1983

DATE DUE



By: R. Robertson
Calgary
March, 1984

This report has been examined by
the Geological Evaluation Unit
under Section 53 (4) Yukon Quartz
Mining Act and is allowed as
representation work in the amount
of \$ 20,417.⁸¹

for *K. Grapes*
Regional Manager, Exploration and
Geological Services for Commissioner
of Yukon Territory.

TABLE OF CONTENTS

	<u>Page</u>
1. INTRODUCTION	1
1.1 General	1
1.2 Location, Access and Physiography	1
1.3 Previous Exploration Activities	1
2. REGIONAL GEOLOGY	2
3. PROPERTY GEOLOGY	3
3.1 General	3
3.2 Basement Rocks	4
3.2.1 Yukon Group	4
3.2.2 Plutonic Rocks	4
3.3 Skukum Group	5
3.3.1 Rhyolite	5
3.3.2 Lithic Tuff	5
3.3.3 Andesite Porphyry	6
3.3.4 Quartz-Feldspar Porphyry	6
4. ECONOMIC GEOLOGY AND GEOCHEMISTRY	7
4.1 Introduction	7
4.2 Rhyolite Zone	7
4.2.1 Geology	7
4.2.2 Geochemistry	8
4.3 Skarn Zone	9
4.3.1 Geology	9
4.3.2 Geochemistry	9
4.4 Creek Zone	9
4.4.1 Geology	9
4.4.2 Geochemistry	10
5. DISCUSSION	10
6. REFERENCES	11

LIST OF FIGURES

Figure 1	Claim Locations
Figure 2	Preliminary Geology
Figure 3	Rock Geochemistry
Figure 4	Soil Geochemistry

LIST OF APPENDICES

Appendix A	Sampling and Analytical Methods
Appendix B	Statement of Expenditures
Appendix C	Statement of Qualification

1. INTRODUCTION

1.1 General

The LATER 1-35 claims (YA 75682 - YA 75716) were staked and recorded in May 1983. Preliminary surface exploration (geological mapping, prospecting and geochemical sampling) was carried out on the claim group at several times during the 1983 field season (2nd-8th June, 7th July, 19th-21st July, 18th-20th August). Initial work was conducted from a fly-camp on the property; subsequently, work was performed by personnel based at AGIP Canada Ltd.'s base camp at the Mt. Skukum property (KUKU claims, 105 D3).

1.2 Location, Access and Physiography

The LATER 1-35 claims are located on NTS map sheet 105 D/5, 45 kilometers southwest of Whitehorse and 18 kilometers north of Mt. Skukum, at 60°22'N latitude and 135°30'W longitude (Figure 1). The claims are 8 kilometers west of Alligator Lake and 5 kilometers north of the Watson River.

Access to the property is by helicopter; a rough bush road follows the Watson River to within 5 kilometers of the claims.

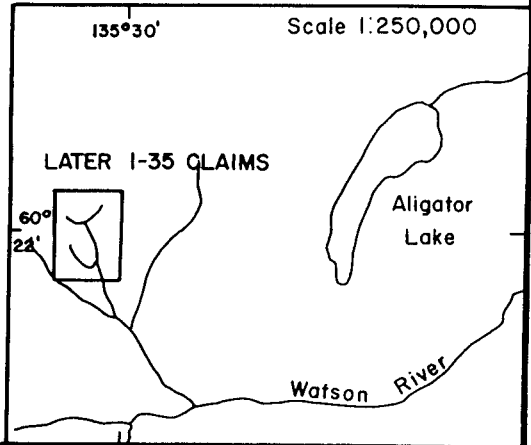
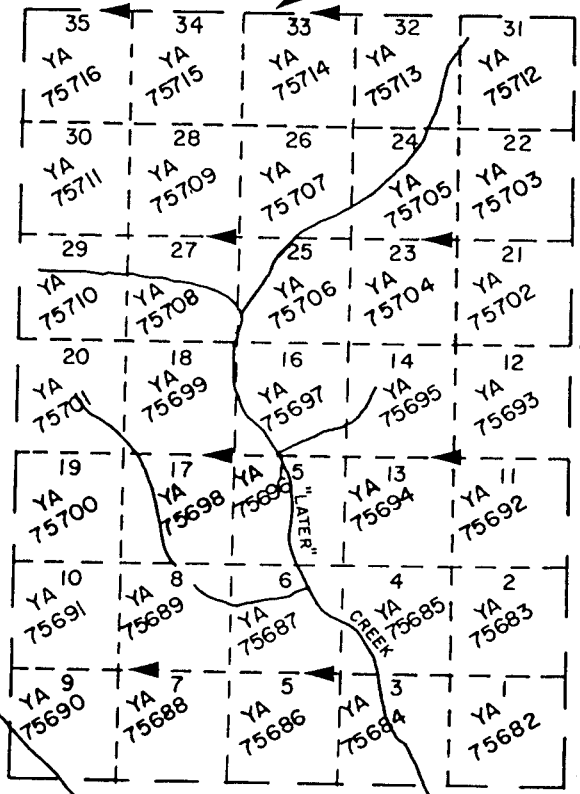
The property is in subdued alpine terrain, with relief varying from 1250 meters to over 1900 meters. The entire area is above treeline and is completely accessible by foot, although stream valleys deeply incise the terrain. The main creeks on the property flow throughout the field season, whereas some side creeks are dry. Vegetation is limited to alpine grasses and shrubs, and sparse dwarf birch and willow in the stream valleys.


1.3 Previous Exploration Activities

Prior to 1980, exploration by various companies working in the region was concentrated south and east of Alligator Lake. Several polymetallic showings of Cu, Mo, Pb, Ag and Sb, which occur between the Wheaton and Watson Rivers, were prospected and



LATER 1-35 CLAIMS



 Agip Canada Ltd.	REPORT: PROJECT 400650		
ALLIGATOR LAKE PROJECT (LATER 1-35) CLAIMS LOCATION MAP			
NTS. 1050/5			
SCALE: 1:31,680	AUTHOR: R.E.M.	DATE: DEC., 1983	FIGURE: 1

partially developed. In other areas, east of Mt. Skukum and to the south near Bennett Lake, a number of base and precious metal occurrences were investigated. To date, most occurrences have proved uneconomic. The only deposit ever to have reached production was the Venus Mine, which operated several times between the early 1900's and 1981.

2. REGIONAL GEOLOGY

The LATER 1-35 claims cover a small outlying early Tertiary volcanic centre of the Skukum Group. These acid to intermediate volcanic rocks are age-equivalents of the Mt. Nansen Group to the north, near Carmacks, and of the Sloko Group in northern British Columbia (Souther, 1967). Together they form the Sloko Volcanic Province, which extends along the northeastern margin of the Coast Crystalline Complex, adjacent to the Whitehorse Trough.

Volcanic rocks of the Sloko Province were extruded in the early Tertiary during a period of tectonic extension and rapid uplift (Souther, 1967). Their distribution was largely controlled by block faulting and caldera development along structurally weak zones in basement rocks (Lambert, 1974).

The Skukum Group lies unconformably on isolated sections of Late Precambrian Yukon Group metasedimentary rocks and on Cretaceous granitic rocks of the Coast Crystalline Complex. Yukon Group rocks are the oldest in the area and consist primarily of quartz-rich micaceous schists and gneisses which, in many areas, are capped by prominent upper units of impure crystalline limestone. The plutonic rocks are granite to granodiorite in composition. They are weakly sericitized and chloritized and dominate much of the region (Wheeler, 1961).

Northwest of Alligator Lake a section of Quaternary Miles Canyon basalt forms an eruptive cone which is breached to the northeast. Flows from this centre unconformably overlie the Skukum rocks, as well as the Cretaceous intrusives. Adjacent to these younger rocks, mafic metavolcanic rocks of uncertain age

border the plutonic complex and may represent an earlier period of Skukum volcanism, however, Morrison (1979) grouped them with the Upper Triassic Lewes River Group which outcrops extensively to the north.

3. PROPERTY GEOLOGY

3.1 General

The LATER 1-35 claims enclose a sequence of Skukum Group volcanic rocks, which appear to represent part of a distal eruptive centre, outlying from the main Skukum complex to the south. The sequence unconformably overlies Yukon Group metasedimentary rocks which are intruded by Cretaceous granites and granodiorites (Figure 2).

The Skukum Group rocks are a subaerial sequence of tuffs, flows, dykes and sills of rhyolite and andesite composition. Lowermost in the sequence, flow-banded and tuffaceous rhyolite flows rest unconformably on the basement complex. The rhyolite is overlain by a thick unit of lithic tuff, which is predominantly rhyolitic at the base, but grades upwards into andesitic composition. The tuff is interlayered with flows and sills (?) of andesite porphyry, while the entire stratigraphic sequence is transected by rhyolite porphyry and andesite porphyry dykes. Pale-weathering quartz-feldspar porphyry dykes and flows post-date and overlie the rhyolite and andesite units, however, in some areas quartz-feldspar porphyry flows appear to be gradational in composition and texture with rhyolite porphyry intrusions.

The volcanic rocks are essentially flat-lying, with gentle southwest dips. No prominent fault zones are apparent, but the major dykes are believed to have been emplaced along structural weaknesses in the basement complex and are commonly associated with weakly developed zones of shearing and fracturing.

Epithermal activity associated with dyke intrusion has formed propylitic, argillic and skarn alteration, and gold-silver

mineralization in the volcanic rocks and underlying metasediments.

3.2 Basement Rocks

3.2.1 Yukon Group

Outcrops of the Yukon Group basement rocks are exposed mainly in the creeks in the central and northern areas of the claims. The lower section is grey biotite and hornblende-bearing quartzofeldspathic gneiss, which is probably derived from impure quartz-rich metasediments.

The gneisses are overlain by argillaceous siltstones and impure micaceous quartzites, some of which are finely laminated with weakly graded bedding. A unit of recrystallized limestone (\pm 100 m) overlies the clastic sediments and is interlayered with minor quartzite and argillite. The metasediments dip moderately to the east and, where they are intruded by rhyolite porphyry, zones of garnet-diopside skarn and minor hornfels have developed, with associated mineralization.

3.2.2 Plutonic Rocks

The southwestern portion of the LATER claims is underlain by plutonic rocks of granite to granodiorite composition which belong to the Coast Crystalline Complex. They intrude the Yukon Group, but are unconformably overlain by the Skukum Group. The granodiorite contains biotite and hornblende with euhedral to subhedral plagioclase, interstitial orthoclase and quartz. The feldspars are saussuritic with minor clay-sericite alteration and the mafics are weakly chloritized. The more felsic rocks contain subhedral orthoclase and plagioclase with minor muscovite and biotite and little or no hornblende. Some varieties are leucocratic, cream-white with the texture and composition of an alaskite.

3.3 Skukum Group

3.3.1 Rhyolite

Flow-banded rhyolite is exposed at the base of the Skukum Group unconformably overlying the basement rocks as well as higher up in the sequence. The rhyolite groundmass is aphanitic to microlitic with intermittent quartz and feldspar porphyritic zones. Phenocrysts are usually <0.5 centimeters across and comprise <10% of the rock. Interlayered tuffaceous beds occur irregularly with fragments <1 centimeter in size. Flow-banding is irregular with <1 millimeter to 1 centimeter laminations. It is steeply oriented and seldom displays conformity with adjacent units. Local zones of shattering and brecciation are common. Where jointing occurs, it generally has regular spacing (20-50 cm) and orientation.

At some localities porphyritic rhyolite dykes crosscut basement rocks and continue discordantly upwards through the volcanic stratigraphy. The dykes are generally massive, aphanitic, with 5-15% quartz and feldspar phenocrysts and typically lack flow-banding and notable brecciation features. At the northern end of 'Later' Creek, rhyolite porphyry dykes up to 5 meters wide crosscut granodiorite and contain blocks of granodiorite up to 50 centimeters in size. It is quite possible that these dykes acted as feeder conduits to felsic rocks higher in the Skukum Group sequence. Epithermal alteration and mineralization are closely related to dyke emplacement and are discussed in greater detail in a subsequent section.

3.3.2 Lithic Tuff

Most of the eastern half of the claim block is underlain by a thick unit of multilithic tuff. This unit overlies the basal rhyolite and appears to be essentially continuous, but gradational in composition, upwards towards the top of the section. Lithic

fragments have equally variable composition, range from fine to coarse lapilli and comprise 5-50% of the unit. At its base, the tuff matrix is siliceous and fragments are mainly rhyolite, but further up section the composition is predominantly andesitic. In the lower section quartz crystal fragments and phenocrysts are present along with a few siliceous nodules and small blocks of flow-banded rhyolite several centimeters across. The upper section contains fragments of andesite porphyry, chloritized mafic shards and broken plagioclase crystals. Some sections display weak to moderate welding and fine lamellar textures, interlayered with thin crystal tuff horizons. A few tuff-breccia fragments are present suggesting some degree of slumping and re-working of the tuffs. Rare granitic and gneissic clasts are also present and are probably basement wallrock fragments.

3.3.3 Andesite Porphyry

Discontinuous, flat-lying flows (or sills ?) of andesite porphyry occur intermittently within the lithic tuff unit. The porphyry has a fine to medium-grained, dark grey-green matrix with up to 20% plagioclase phenocrysts and minor (<5%) hornblende phenocrysts. Textures vary from sparse to crowded glomeroporphyritic plagioclase clusters. Minor vuggy cavities are lined or filled with quartz and calcite.

Andesite porphyry dykes transect the lower rhyolites and tuffs and are, in turn, cut by narrow rhyolite dykes. Where the porphyry is in contact with rhyolite, the matrix is strongly silicified and has a pale grey-green colour.

3.3.4 Quartz Feldspar Porphyry

The complete volcanic sequence is cut by buff-weathering felsic quartz-feldspar porphyry dykes that range from fine to coarse-grained in texture, are vesicular and vuggy and contain up to 5% disseminated pyrite. Much of the northwestern part of the

claim group is underlain by quartz-feldspar porphyry and rhyolite porphyry felsenmeer. The proximity of the two rock types in this area and their textural similarities suggest that a compositional gradation exists between them. Furthermore, the textures displayed resemble surficial flow features observed in recent volcanic terrains.

As with the rhyolite and andesite porphyry dykes, it is likely that quartz-feldspar porphyry dykes acted as feeders to overlying flows. These relationships, along with the widespread distribution of quartz-feldspar porphyry and rhyolite in the area, are evidence that a domed felsic (rhyolitic) eruption centre may have developed late in the period of Skukum Group volcanism in this area.

4. ECONOMIC GEOLOGY AND GEOCHEMISTRY

4.1 Introduction

Preliminary prospecting and mapping in the central portion of the claim group have indicated three zones of potential gold-silver mineralization. The "Rhyolite" and "Skarn" Zones are located along 'Anomaly' Creek and the "Creek" Zone is 500 meters to the northwest along 'Later' Creek (Figure 2).

4.2 Rhyolite Zone

4.2.1 Geology

The Rhyolite Zone outcrops near the junction of Later and Anomaly Creeks, where a northeast-trending rhyolite porphyry dyke transects the stratigraphic sequence and is intruded by two smaller andesite porphyry dykes. The zone is characterized by bright, Fe-stained alteration, which is exposed over 200 meters east to west, with an elevation difference of about 80 meters. The rhyolite is highly fractured and has an assemblage of clay,

sericite, chlorite, epidote, minor jasper and calcite developed in shears and fractures, and pervasively in various combinations in the matrix. Pyrite is disseminated up to 5% throughout the altered rocks with minor veins (<1 cm) of arsenopyrite and specular hematite. A similar alteration assemblage occurs in the andesite dykes, however, this unit also displays a moderate silicification overprint. Three massive quartz (+ calcite) veins crosscut the rocks within and adjacent to the main rhyolite dyke and are bordered by clay-sericite+chlorite alteration.

4.2.2 Geochemistry

A total of 71 rock samples collected from the Rhyolite Zone (Figure 3) include 51 samples containing >100 ppb Au, 24 samples containing >500 ppb Au and 10 samples containing >1000 ppb Au. Eight samples assayed >1 g/t, with the highest at 2.43 g/t Au. Most Au-anomalous rock samples in the Rhyolite Zone are accompanied by Ag values in the 1.0 to 10.0 ppm range, with the highest Ag value at 44.0 ppm. Arsenic values in Au-Ag-anomalous samples are generally consistent at 1000 ppm with background values below 25 ppm. Corresponding Hg analyses from this zone show only minor fluctuation and most do not correlate with Au, Ag or As anomalies.

Soil sampling across the Rhyolite Zone has outlined coincident anomalies in Au, Ag and As (Figure 4). The highest values are 915 ppb Au, 13 ppm Ag and 1000 ppm As. The anomalies are continuous over 150 meters width and discontinuous up to 300 meters. The Au anomaly is open to the southwest and, considering the high Au values in rock samples from the Skarn Zone, it is very likely that additional soil sampling will extend the anomaly to the east.

4.3 Skarn Zone

4.3.1 Geology

The Skarn Zone occurs at the edge of the Yukon Group limestone, 200 meters east of the Rhyolite Zone. The limestone is exposed as an erosion window in the overlying lithic tuff. A calc-silicate garnet-diopside skarn assemblage, with accessory malachite and traces of chalcopyrite, is developed where the limestone is intruded by the same northeast-trending rhyolite dyke that dominates the Rhyolite Zone.

4.3.2 Geochemistry

Although only a few rock samples have been collected from this zone, values as high as 2.43 g/t Au and 53.1 g/t Ag have been obtained (Figure 3). Au values in soils were not particularly high (60 ppb), however, a well-defined +5.0 ppm Ag anomaly is present having a maximum width of >100 meters and is open to the east and west (Figure 4).

Since there have been few samples collected between the Rhyolite and Skarn Zones, there is every possibility that the two zones are mutually continuous for a minimum length of 500 meters with the potential to continue in either direction.

4.4 Creek Zone

4.4.1 Geology

The Creek Zone is associated with a northeast-trending andesite porphyry dyke which outcrops approximately 500 meters northwest of the Rhyolite Zone. The andesite dyke is cut by narrow rhyolite dykes and is flanked by an irregular shear zone 25 meters wide.

6. REFERENCES

Lambert, M.B.

1974: The Bennett Lake Cauldron Subsidence Complex, British Columbia and Yukon Territory. Geological Survey of Canada, Bulletin 227, 213 p.

Meyers, R.E.

1983: Alligator Lake Project, 1983 Exploration Activities, AGIP Canada Ltd. Internal Report, 17 p.

Morrison, G.W.

1979: Metallogenic Map, Whitehorse Map Area, Yukon, Department of Indian Affairs and Northern Development, Open File EGS 1979-6.

Souther, J.B.

1967: Acid Volcanism and its Relationship to the Cordillera of British Columbia, Canada. Bulletin of Volcanology, Vol. 30, p. 161-176.

Wheeler, J.O.

1961: Whitehorse Map Area, Yukon Territory. Geological Survey of Canada, Memoir 312, 156 p.

APPENDIX A
SAMPLING AND ANALYTICAL METHODS

Soil and Talus Fine Samples

Soil samples and talus fine samples were collected in areas covered by overburden or talus, across or along strike of known or potential mineralized zones, as displayed by alteration or veining. Samples were collected by hand, rock hammer or shovel at depths of 10-20 cm in the B horizon, where possible; however, in some areas soil profiles are poorly developed. Field notes on colour, size fraction, organic content and nearby rock types or mineralization were taken. Sample locations were marked with numbered flagging tapes.

Rock Chip Samples

Rock samples were taken using a rock hammer with chips collected into poly sample bags. All samples were taken at 1 meter widths across veins or alteration zones in a continuous 5-10 cm swath. Samples were not taken across lithological contacts. Field notes describing rock types, structural features and alteration/mineralization were taken. Sample intervals were marked with fluorescent red spray point.

Analytical Methods

All samples were analysed for gold, silver, arsenic and mercury or antimony. Analyses were done by Bondar-Clegg Laboratories in North Vancouver.

Soil samples are dried and sieved to -80 mesh. Rock chip samples are pulverized and a split of the -100 mesh fraction is analysed.

Gold is analysed by fire assay techniques. A 20 gram sample is mixed with a fluxing agent and melted in a furnace. The molten mixture is poured and a lead button containing the precious metals is separated from the slag. The button is heated in a cupel to remove the lead and the noble metals remain in a small bead. The bead is treated with nitric acid in a test tube, then with aqua regia to completely dissolve it. The solution is then analysed for gold by atomic absorption (AA) using standards having a similar matrix.

Gold assays are done by standard fire assay using a one assay ton sample weight. Following preparation of the bead, silver is removed by dissolving in nitric acid and the bead is weighed to determine the gold content of the original sample.

Silver is analysed by hot nitric acid digestion. A 0.5 gram sample is placed in a test tube and 1.5 ml HNO_3 is added. The sample is then heated in a hot water bath for 1/2 hour. Then 0.5 ml of HCl are added and the sample is heated for an additional 1 1/2 hours. The sample is then diluted with 10 ml of water and allowed to settle. The solution is then analysed by atomic absorption.

Mercury analyses are by flameless AA spectrophotometry after sample digestion in aqua regia.

Arsenic analyses are by perchloric-nitric acid digestion and colorimetric determination.

Antimony is analysed by x-ray fluorescence using a pressed pellet of pulverized rock.

Analyses

Sample preparation and analyses by Bondar-Clegg Ltd., North Vancouver.
Freight charges omitted.

Sample Preparation

98 rock samples at \$3.10	\$ 303.80
160 soil samples at \$1.00	160.00

Analyses

258 silver analyses	416.65
1 silver assay	3.50
258 gold analyses	1,548.00
12 gold assays	84.00
258 arsenic analyses	754.65
135 antimony analyses	486.00
123 mercury analyses	443.00
2 barium analyses	<u>5.40</u>
	\$ 4,205.00

Report Preparation

Estimated costs of drafting, typing, map reproduction	\$ <u>600.00</u>
Total expenditures submitted for assessment credit	<u>\$20,417.81</u>

APPENDIX C
STATEMENT OF QUALIFICATIONS

I, RONALD CHARLES RAMSAY ROBERTSON, of the City of Calgary, in the Province of Alberta, hereby certify:

That I am a Senior Geologist employed by AGIP Canada Ltd. and that I caused to be performed and supervised, the work described in this report.

That I obtained a Bachelor of Science degree with First Class Honours in Geology from the University of Aberdeen, Scotland in 1970 and subsequently carried out graduate studies at McMaster University, Hamilton, Ontario, and at Queen's University, Kingston, Ontario.

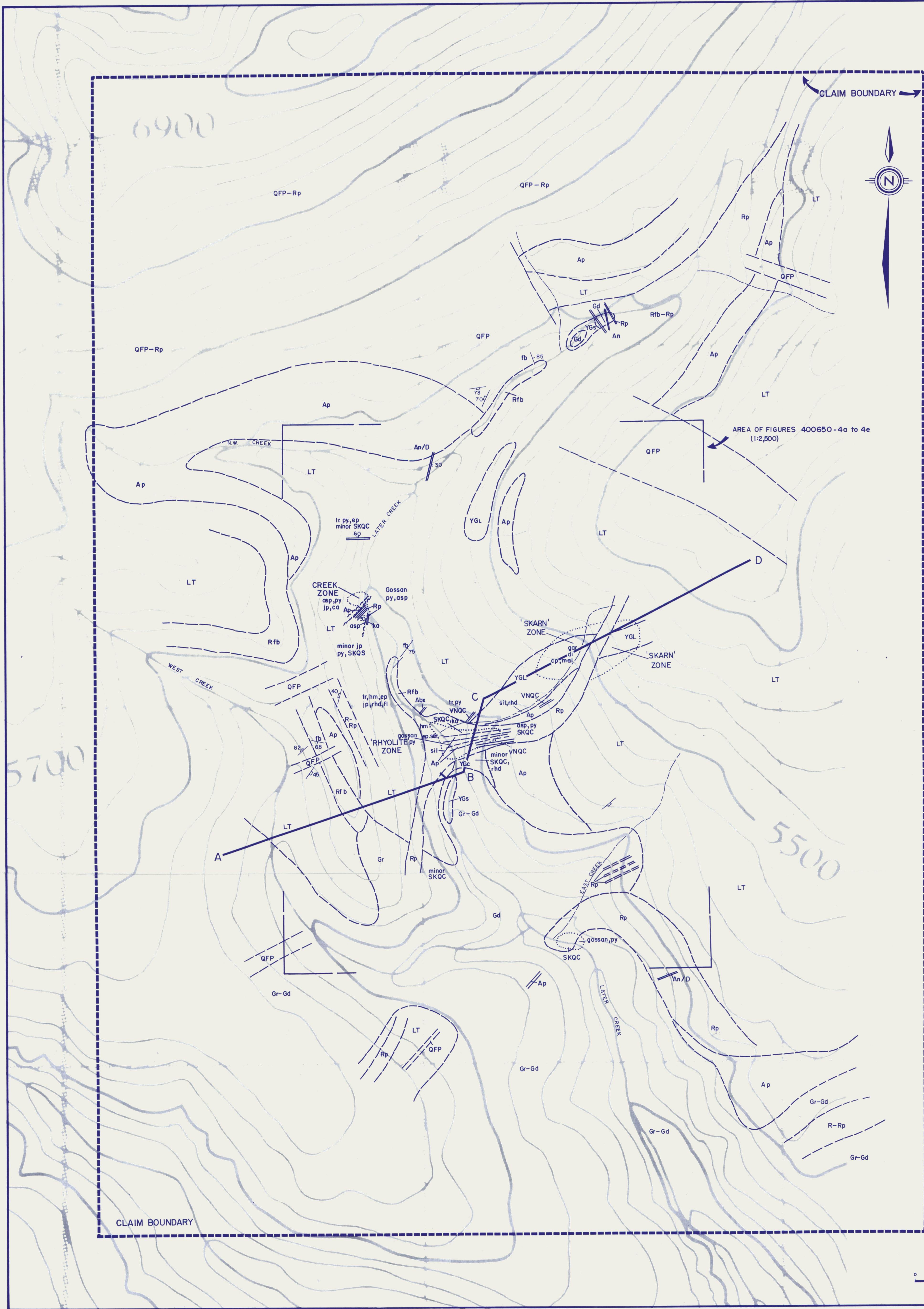
That I have been engaged in mineral exploration on a full-time and part-time basis for fourteen years of which six have been on mineral exploration programs in the Yukon Territory and Alaska.

That I am a member of the Canadian Institute of Mining and Metallurgy, and the Prospectors and Developers Association.

Signed at Calgary, Alberta this 9th day of March, A.D., 1984.



RONALD C.R. ROBERTSON



LEGEND

CENOZOIC

SKUKUM GROUP (TERTIARY OR YOUNGER)

QFP QUARTZ-FELDSPAR PORPHYRY
Rhyolitic dykes and flow

LT LITHIC TUFF
Gradational in composition and fragment size; rhyolitic (lower) to andesitic (upper); ash to lapilli tuff, crystal tuff, tuff-breccia

Ap ANDESITE PORPHYRY
Massive flows, dykes and sills; plagioclase- and hornblende-phyric

R RHYOLITE
Rp - porphyritic (quartz-eyes)
fb - flow banded, minor tuff

MESOZOIC

COAST PLUTONIC COMPLEX (CRETACEOUS)

Gr-Gd GRANITE - GRANODIORITE

LATE PRECAMBRIAN

YG YUKON GROUP

YGL crystalline limestone, marble, skarn

YGC clastic sediments; quartzite, argillite

YGS gneisses and schists; upper green schist to amphibolite

SYMBOLS

QUARTZ VEINS

VNQC massive quartz ± carbonate vein

SKQC quartz ± carbonate stockwork veining

DYKES

(Probable subvolcanic feeder dykes)

An andesite, diorite, diabase

Ap andesite porphyry

Rp rhyolite porphyry

70

Strike and dip, bedding or flow banding

80

Joint, orientation

Geologic contacts (assumed, projected)

○

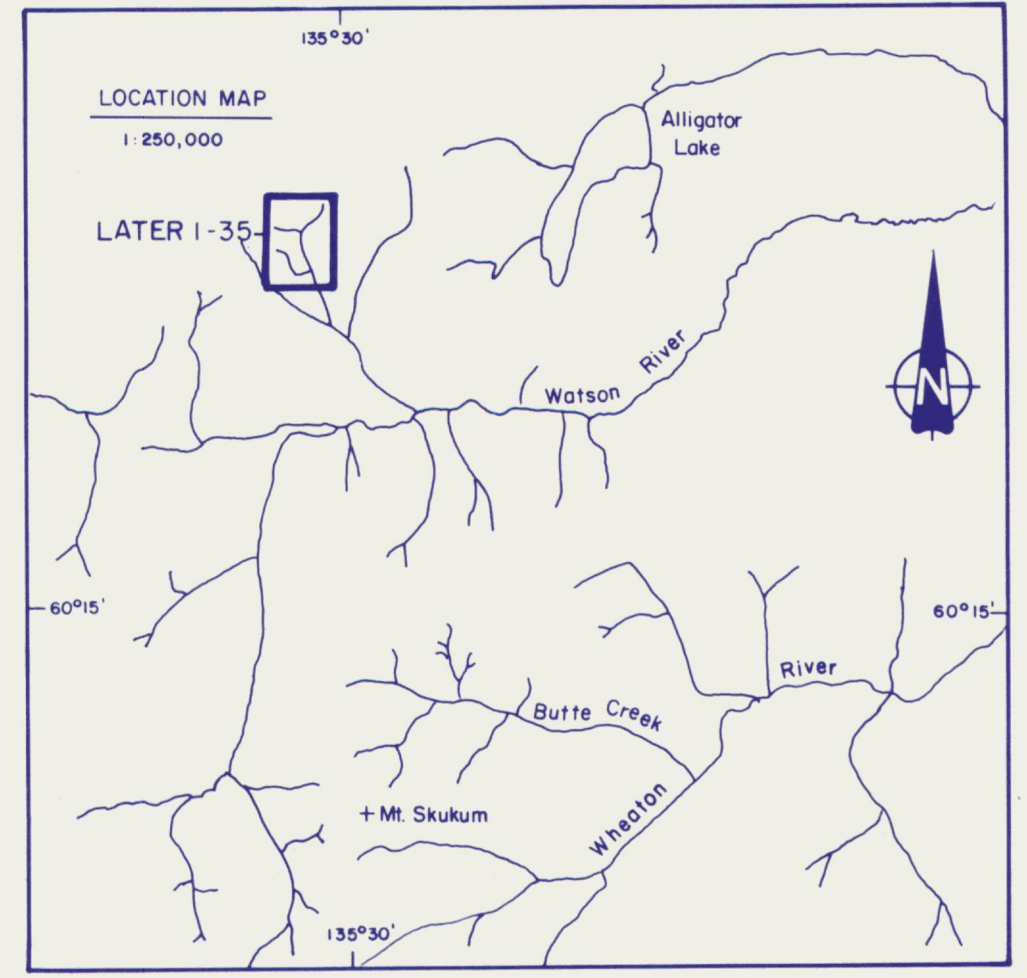
Zone of alteration / mineralization

~ ~ ~

Faults, shear zone

ABBREVIATIONS

py	pyrite	gar	garnet
asp	arsenopyrite	di	diopside
cp	chalcopyrite	ep	epidote
mal	malachite	chl	chlorite
sil	silicified	rhd	rhodonite
ka	kaolinite, clays	hm	hematite
tr	trace	ca	calcite
bx	breccia	fl	fluorite
jp	jasper		

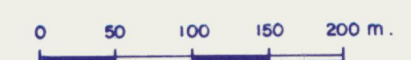


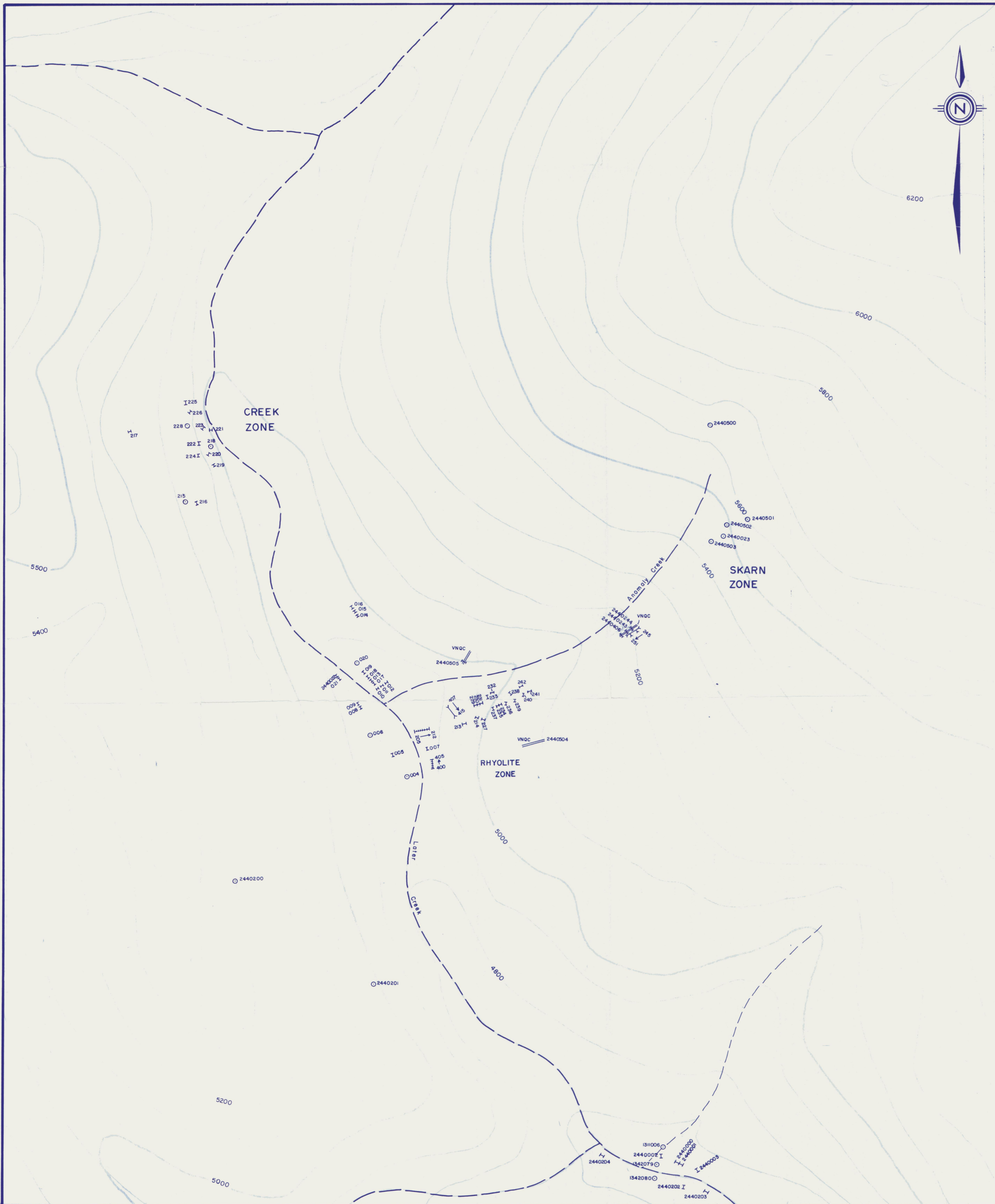
AGIP CANADA LTD.

**ALLIGATOR LAKE PROPERTY
LATER 1-35 CLAIMS
PRELIMINARY GEOLOGY**

PROJECT 400650

SCALE: 1:5000	AUTHOR: R.E.M.	DATE: DEC, 1983
DRAWN BY: GTSz/	N.T.S.: 105-D-5	FIGURE: 2





LEGEND

ROCK SAMPLE ANALYSES										
Sample #	Au	Ag	As	Hg	Sample #	Au	Ag	As	Hg	Sb
2440000	<5	0,2			2440230	1000 ** (10,99 g)	44,0**	1000	30	
001	<5	0,2	2	15	231	825*	7,1*	1000	20	
002	<5	<0,2	11	15	232	800*	2,3*	1000	20	
003	<5	0,3	5	10	233	480*	3,5*	1000	20	
004	550*	4,6*	1000	35	234	1390 ** (1,68 g)	4,7*	1000	30	
005	75	1,5*	400	30	235	595*	3,7*	1000	25	
006	5	0,4	90	55	236	2150 ** (2,07 g)	8,4*	1000	15	
007	40	2,0*	115	25	237	1540 ** (1,14 g)	5,3*	1000	10	
008	60	0,8	95	15	238	565*	4,6*	1000	10	
009	285*	1,9*	1000	10	239	445*	4,7*	1000	30	
010	315*	2,9*	250	20	240	150*	4,5*	75	10	
011	365*	3,0*	1000	35	241	125*	3,6*	600	30	
012	455*	3,0*	1000	35	242	395*	9,5*	1000	25	
013	405*	3,2*	1000	35	243	25	0,6	16	20	
014	480*	4,2*	1000	30	244	20	0,4	15	20	
015	625*	2,9*	1000	30	245	20	0,3	5	11	
016	310*	3,2*	1000	30	246	70	1,0	63	18	
017	1000 ** (0,72 g)	4,5*	1000	30	247	5	0,3	23	16	
018	455*	2,8*	1000	35	248	65	0,9	22	13	
019	650*	3,4*	1000	30	249	215*	1,4*	150	17	
020	305*	2,9*	1000	25	250	5	0,3	15	9	
021	565*	2,4*	1000	25	251	5	0,2	20	16	
022	100*	3,1*	500	25						
023	3460 ** (2,43 g)	39,0*	45	25						
2440200	40	0,4	6	30	2440400	<5	<0,2	53	20	
201	20	1,7*	3	25	401	<5	<0,2	60	20	
202	25	0,2	3	25	402	5	0,4	73	20	
203	5	0,5	4	20	403	<5	<0,2	48	15	
204	<5	<0,2	<2	20	404	5	1,2*	50	20	
205	375*	3,3*	1000	20	405	<5	0,5	87	15	
206	45	2,4*	140	25	406	190*	7,7*	150	22	
207	460*	2,2*	1000	20	407	395*	3,4*	900	32	
208	2150 ** (1,47 g)	5,1*	1000	10	408	395*	3,6*	850	36	
209	1150 ** (0,82 g)	4,0*	1000	30	409	500*	3,9*	900	38	
210	2870 ** (2,43 g)	4,1*	1000	20	410	340*	2,7*	700	31	
211	2600 ** (2,40 g)	3,6*	1000	25	411	480*	3,6*	1000	51	
212	1100 ** (1,23 g)	4,5*	1000	20	412	250*	2,3*	600	26	
213	515*	5,8*	1000	25	413	255*	2,6*	800	31	
214	625*	2,6*	1000	25	414	225*	2,3*	550	18	
215	10	1,6*	50	20	415	320*	2,4*	650	27	
216	5	0,2	8	20						
217	5	1,3*	6	15	2440500	<5	0,3	5	6	
218	550*	3,4*	1000	30	501	5	16,0*	7	22	
219	65	0,4	1000	20	502	1160 ** (1,06)	50,0**	<30	<2	
220	110*	1,3*	1000	25			** (53,1 g)			
221	20	0,4	1000	20	503	230*	1,6*	20	35	
222	10	0,2	400	15	504	60	3,1*	80	18	
223	<5	<0,2	37	20	505	805*	5,6*	400	29	
224	10	<0,2	135	25						
225	15	0,3	250	30						
226	20	0,2	1000	20						
227	670*	2,7*	1000	25						
228	195*	0,6	1000	20						
229	420*	3,5*	1000	20						

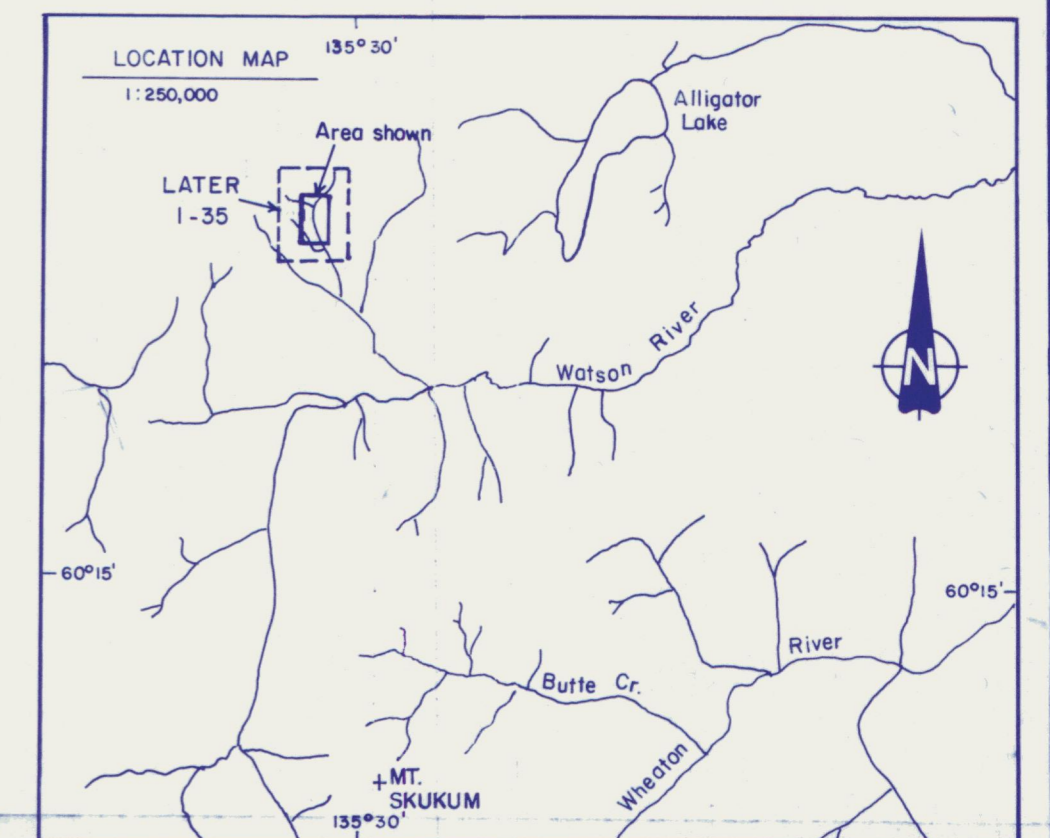
Au and Hg values in ppb; Ag,As,Sb values in ppm.

Au and Ag assays quoted as (1,47g), i.e. 1.47 grams per metric tonne.

SYMBOLS

- Rock Chip Samples
- Grab Sample
- Trench
- * Au 100-999 ppb
- * * Au ≥ 1000 ppb
- Ag 1.0-9.9 ppm
- Ag ≥ 10.0 ppm

Note: All 3 digit sample numbers are in the '2440000' series.

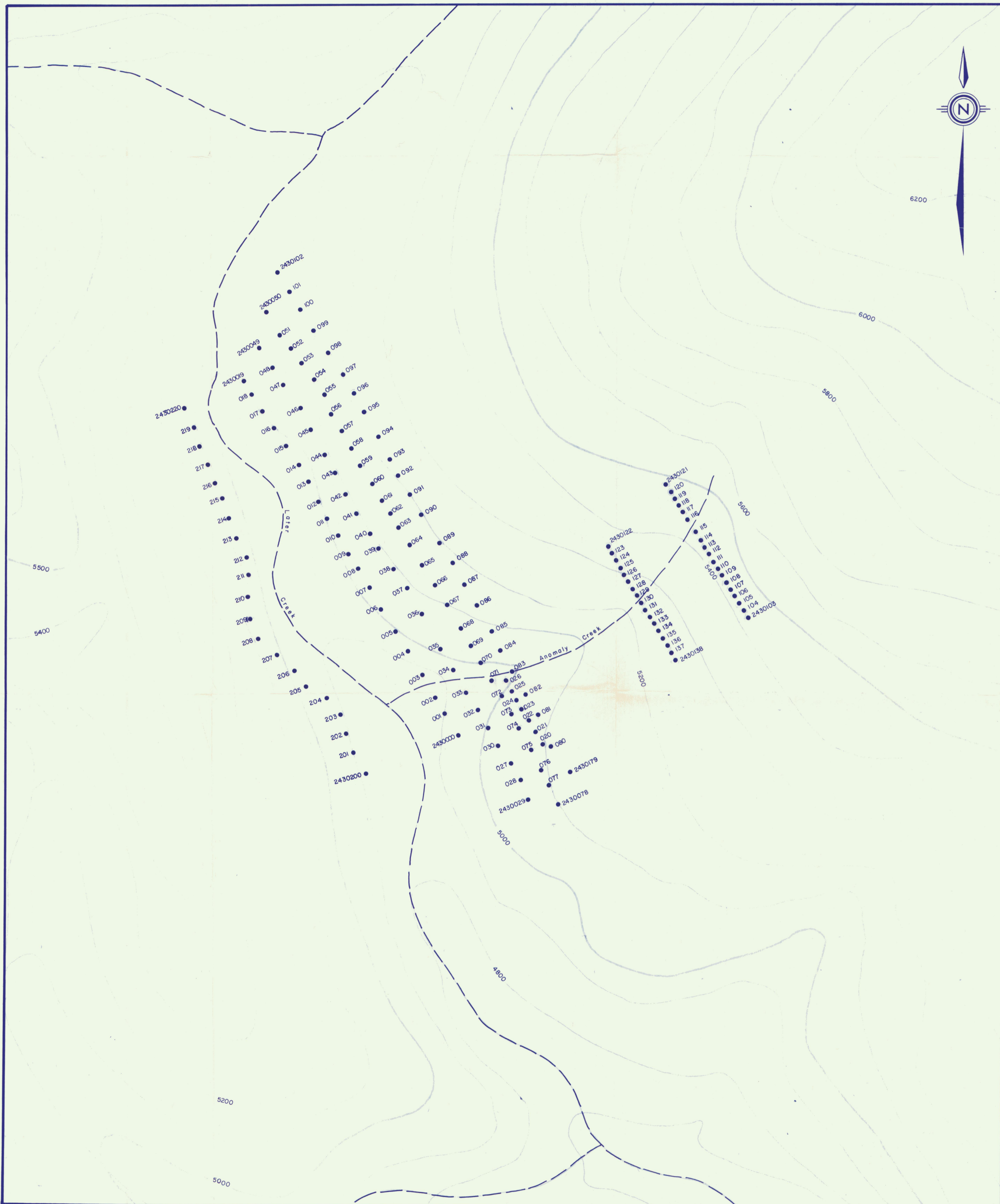


0 25 50 75 100 m.

AGIP CANADA LTD.

ALLIGATOR LAKE PROPERTY
LATER I-35 CLAIMS
ROCK GEOCHEMISTRY-1983

YUKON		PROJECT: 400650
SCALE: 1:2500	AUTHOR: R.E.M.	DATE: Nov, 1983
DRAWN BY: GTSz	N.T.S.: 105-D-5	FIGURE: 3



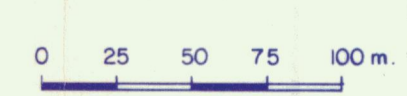
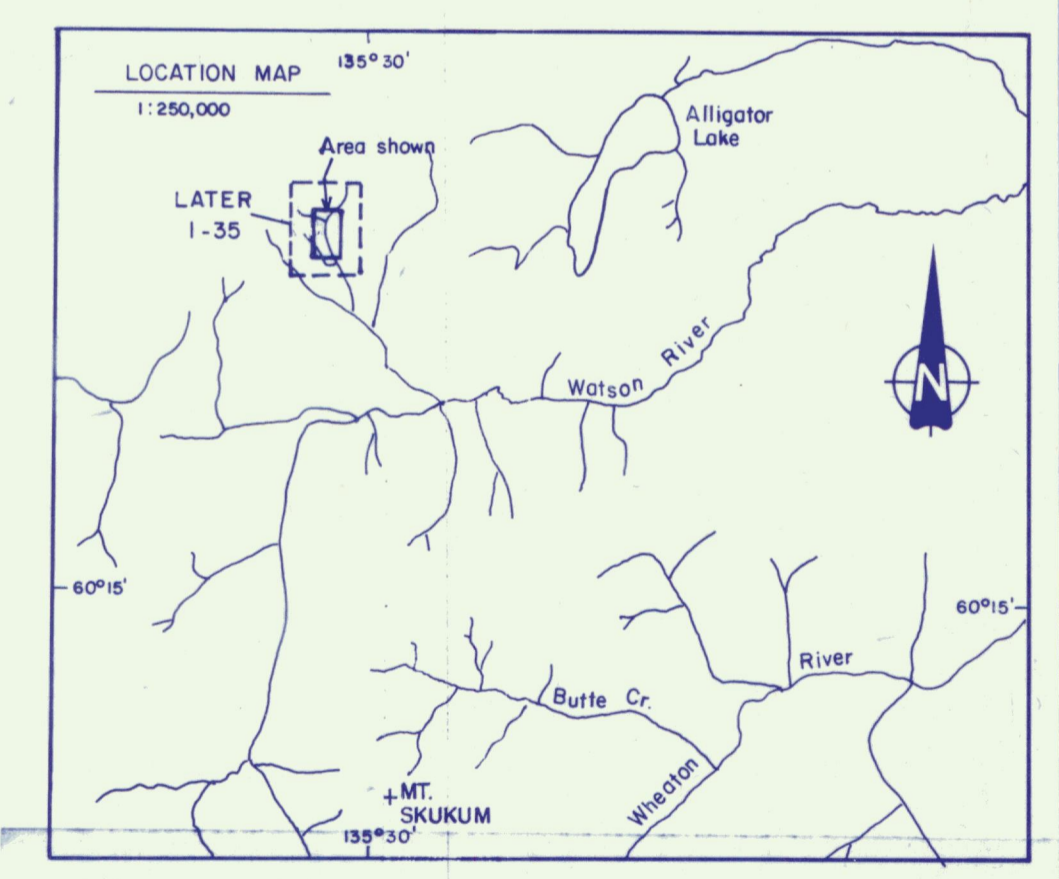
LEGEND

SOIL SAMPLE ANALYSES											
Sample #	Au	Ag	Hg	As	Sb	Sample #	Au	Ag	Hg	As	Sb
2430000	20	1.0*	25	60		2430080	15	1.0*	28	4	
001	645**	9.1*	80	900		081	15	0.9	55	4	
002	65*	1.3*	45	160		082	50	0.7	57	5	
003	915**	13.0**	55	1000		083	10	0.4	57	5	
004	120*	2.5*	50	100		084	20	<0.2	7	<2	
005	45	2.9*	40	100		085	10	0.4	3	<2	
006	30	1.0*	15	110		086	15	0.9	20	<2	
007	25	0.8	15	250		087	50*	1.5*	31	11	
008	15	2.9*	75	25		088	5	0.6	17	4	
009	5	0.4	40	20		089	10	0.4	15	3	
2430010	5	0.3	35	14		2430090	10	0.3	26	2	
011	5	0.4	40	30		091	5	0.3	11	3	
012	5	0.4	40	30		092	<5	<0.2	14	<2	
013	5	0.7	55	22		093	20	0.4	30	5	
014	15	0.2	15	30		094	5	0.4	15	5	
015	10	0.5	25	30		095	20	0.6	82	6	
016	100*	0.9	30	320		096	<5	0.5	24	4	
017	10	0.6	25	100		097	10	0.7	50	3	
018	10	0.2	35	95		098	50	1.6*	200	8	
019	5	0.2	15	10		099	10	0.6	83	3	
2430020	85*	0.6	45	120		2430100	<5	0.3	20	<2	
021	180*	5.3*	65	600		101	10	0.3	18	5	
022	30	7.5*	75	50		102	5	0.6	23	<2	
023	90*	2.3*	30	230		103	10	1.3*	18	4	
024	25	1.6*	5	50		104	10	5.0*	45	6	
025	355*	3.8*	90	210		105	<5	7.0*	55	100	
026	20	0.4	10	107	6	106	65	4.3*	19	20	
027	10	0.4	15	13	5	107	5	1.0**	42	21	
028	5	1.0*	15	7	5	108	<5	11.0**	47	58	
029	<5	0.3	12	7	5	109	5	5.0*	27	14	
2430030	5	1.3*	23	6	6	2430110	10	5.0*	25	8	
031	10	0.7	58	3	3	111	15	5.0*	80	23	
032	90*	0.6	170	3	3	112	5	5.0*	34	26	
033	235*	2.2*	210	<2	<2	113	5	4.8*	34	26	
034	165*	8.9*	1000	29	29	114	10	8.0*	54	34	
035	225*	5.0*	310	17	17	115	<5	5.5*	5	<2	
036	280*	5.4*	120	<2	<2	116	10	0.4	15	<2	
037	10	0.6	50	<2	<2	117	10	0.8	10	6	
038	<5	0.4	42	<2	<2	118	5	0.8	10	<2	
039	<5	0.5	20	4	4	119	10	0.4	19	18	
2430040	<5	0.3	14	3	3	2430120	20	0.4	50	6	
041	<5	0.3	12	<2	<2	121	10	0.3	10	<2	
042	<5	0.3	14	4	4	122	15	0.4*	47	6	
043	<5	0.4	21	3	3	123	15	0.9*	37	6	
044	<5	0.4	28	3	3	124	10	1.6*	190	26	
045	40	1.1*	310	5	5	125	40	5.0*	105	10	
046	45	1.6*	400	14	14	126	35	5.1*	150	50	
047	5	0.4	80	5	5	127	30	4.4*	105	15	
048	40	0.4	15	<2	<2	128	20	2.2*	58	10	
049	<5	0.3	15	2	2	129	10	1.6*	62	20	
2430050	<5	0.2	18	4	4	2430130	5	5.0*	35	16	
051	<5	0.2	10	<2	<2	131	<5	5.0*	50	24	
052	10	0.2	13	3	3	132	5	15.0**	63	31	
053	<5	0.3	28	2	2	133	20	5.0*	20	28	
054	5	0.2	40	5	5	134	60*	8.0*	63	27	
055	10	0.9	72	<2	<2	135	<5	5.2*	41	21	
056	25	0.6	43	10	10	136	<5	2.8*	18	5	
057	5	0.7	40	5	5	137	<5	0.8	14	6	
058	<5	0.4	18	4	4	138	30	1.6*	103	20	
059	5	0.6	60	5	5						
2430060	<5	0.5	30	0	0	2430200	660**	0.6	95	8	
061	5	<0.2	18	4	4	201	5	0.6	100	13	
062	<5	0.4	19	3	3	202	5	0.4	95	6	
063	5	0.2	15	7	7	203	10	0.3	90	10	
064	5	0.2	13	6	6	204	5	0.3	85	11	
065	<5	0.3	11	5	5	205	5	0.6	140	18	
066	29	1.0*	30	206	3	206	5	0.4	65	7	
067	10	0.5	24	4	4	207	5	0.4	170	10	
068	20	0.9	42	<2	<2	208	5	0.3	40	10	
069	225*	6.4*	270	6	6	209	10	0.2	35	14	
2430070	10	1.2*	32	6	6	2430210	5	0.5	60	17	
071	<5	0.6	22	7	7	211	5	0.4	60	15	
072	<5	0.3	27	6	6	212	5	0.2	25	7	
073	20	1.0*	63	<2	<2	213	5	0.4	135	23	
074	20	2.2*	214	<5	<5	214	<5	0.3	40	16	
075	15	1.0*	20	10	10	215	10	0.3	20	17	
076	95*	14.0**	115	9	9	216	<5	0.2	55	11	
077	15	1.0*	18	7	7	217	<5	0.2	7	7	
078	65*	8.0*	42	5	5	218	<5	0.6	10	11	
079	20	2.5*	49	5	5	219	<5	0.3	55	38	
						2430220	10	0.9	40	180	

Au and Hg values in ppb; Ag,As,Sb values in ppm.

SYMBOLS

- Soil Sample Location and Numbers
- * Au 50-499 ppb ** Au ≥ 500 ppb
- Ag 1.0-9.9 ppm Ag ≥ 10.0 ppm



AGIP CANADA, LTD.

ALLIGATOR LAKE PROPERTY

LATER I-35 CLAIMS

SOIL GEOCHEMISTRY-1983

YUKON PROJECT. 400650

SCALE: 1:2500	AUTHOR: R.E.M.	DATE: Nov., 1983
DRAWN BY: GTSz	N.T.S.: 105-D-5	FIGURE: 4