



GEOLOGICAL, GEOCHEMICAL & GEOPHYSICAL REPORT

on the

DILL 1-32 CLAIMS

Watson Lake Mining Division - Yukon

Lat. 60° 05' N

Long. 130° 11' W

N.T.S. 105 B/1E

for

GOLDFARM RESOURCES LTD.

by

D. G. Allen, P. Eng. (B.C.)

January 20, 1984

Vancouver, B.C.

091515

This report has been examined by
the Geological Evaluation Unit
under Section 53 (4) Yukon Quartz
Mining Act and is allowed as
representation work in the amount
of \$ 4,800⁰⁰.

K. Japes

for Regional Manager, Exploration and
Geological Services for Commissioner
of Yukon Territory.

TABLE OF CONTENTS

SUMMARY	1
CONCLUSION	2
RECOMMENDATION	2
INTRODUCTION	3
LOCATION, ACCESS, PHYSIOGRAPHY	3
CLAIMS	4
REGIONAL GEOLOGY	4
PROPERTY GEOLOGY	5
MINERAL DEPOSITS IN THE AREA	6
GEOCHEMISTRY	6
VLF-EM SURVEY	7
EXPLORATION POTENTIAL	8
REFERENCES	
CERTIFICATE	

ILLUSTRATIONS

Figure 1	Location Map	1:10,000,000	After page 3
Figure 2	Access Map	1:250,000	After page 3
Figure 3	Claim Map	1:50,000	After page 4
Figure 3a	Property Location Map of Midway Silver-Lead- Zinc Area	1:20,000	After page 6
Figure 4	Geology of Midway Property	1:204,000	After page 6
Figure 5	Geochemical and Geological Map	1:5,000	In pocket
Figure 6	VLF-EM Profiles	1:5,000	After page 7

APPENDICES

Appendix I	Analytical Results
Appendix II	Affidavit of Expenses

SUMMARY

Goldfarm Resources Ltd. holds the DILL 1-32 claims, 85 kilometres west of Watson Lake, near the British Columbia-Yukon boundary. Access is by helicopter, but roads reach to within four kilometres of the claims.

The DILL claims lie immediately to the north of the "Midway" property of Regional Resources, Canamax and Procan. The Midway deposit is a major stratabound silver-lead-zinc deposit (4.3 million tons grading 10.5 oz/ton silver and 17% combined lead-zinc) discovered in 1981. Since discovery of the deposit, exploration activity in the general area has been intense with at least one company announcing significant exploration results.

The property is on the east side of the Cassiar batholith and is underlain by metamorphosed sedimentary rocks of the Devonian Age McDame Limestone and Lower Sylvester Group. The latter is the same rock unit that hosts the Midway deposit.

In September 1983 a preliminary program of reconnaissance geochemical soil sampling, VLF-EM surveys, and geological mapping was completed. The most significant results of this work were the delineation of a broad northwest trending area, 100 to 200 metres wide by 1500 metres long, and scattered smaller areas containing weakly to moderately anomalous lead (30 to 56 ppm), zinc (150 to 560 ppm) and silver (1 to 1.8 ppm) values in soil.

A follow-up program is proposed.

CONCLUSION

Preliminary investigation of the DILL claims revealed significant lead-zinc ± silver geochemical anomalies over a large area. Although outcrops are not abundant, the claims appear to be underlain by the same host rocks as the Midway deposit. The exploration program as outlined by Christopher (1983) should be completed.

RECOMMENDATION

A Stage I program of detailed geochemical soil sampling, geological mapping, prospecting, and electromagnetic (e.g., Genie SE-88 horizontal loop electromagnetic system) surveys is recommended. Should results of this work be favorable then a second stage program of trenching and/or diamond drilling is recommended. Estimated costs of Stages I and II are \$50,000 and \$100,000 respectively, for a grand total of \$150,000.

INTRODUCTION

Goldfarm Resources Ltd. holds 32 claims (DILL 1-32) in the Tootsie River area of the southeastern Yukon. The claims were staked in 1982 to cover an area of favorable geology, eighteen kilometres north of the Midway silver-lead-zinc deposit (4.3 million tons grading 10.5 oz/ton silver and 17% combined lead-zinc- see Regional Resources December 7, 1983 news release). The "Midway" area has been the centre of much exploration activity following discovery of the deposit in 1981.

This report summarizes results of preliminary fieldwork carried out by D.G. Allen and A. Geoghegan on September 3 to 5, 1983, for Goldfarm Resources Ltd. Work consisted of reconnaissance geochemical sampling, geological mapping and VLF-EM surveys.

LOCATION, ACCESS, PHYSIOGRAPHY

The DILL claims are situated 85 kilometres west of Watson Lake, and twelve kilometres east of Rancheria (Figures 1 and 2), near the British Columbia-Yukon boundary. Gravel roads provide access to within four kilometres of the claim boundary. Access is by helicopter based in summer months, at Rancheria.

GOLDFARM RESOURCES LTD
DILL CLAIMS
LOCATION MAP

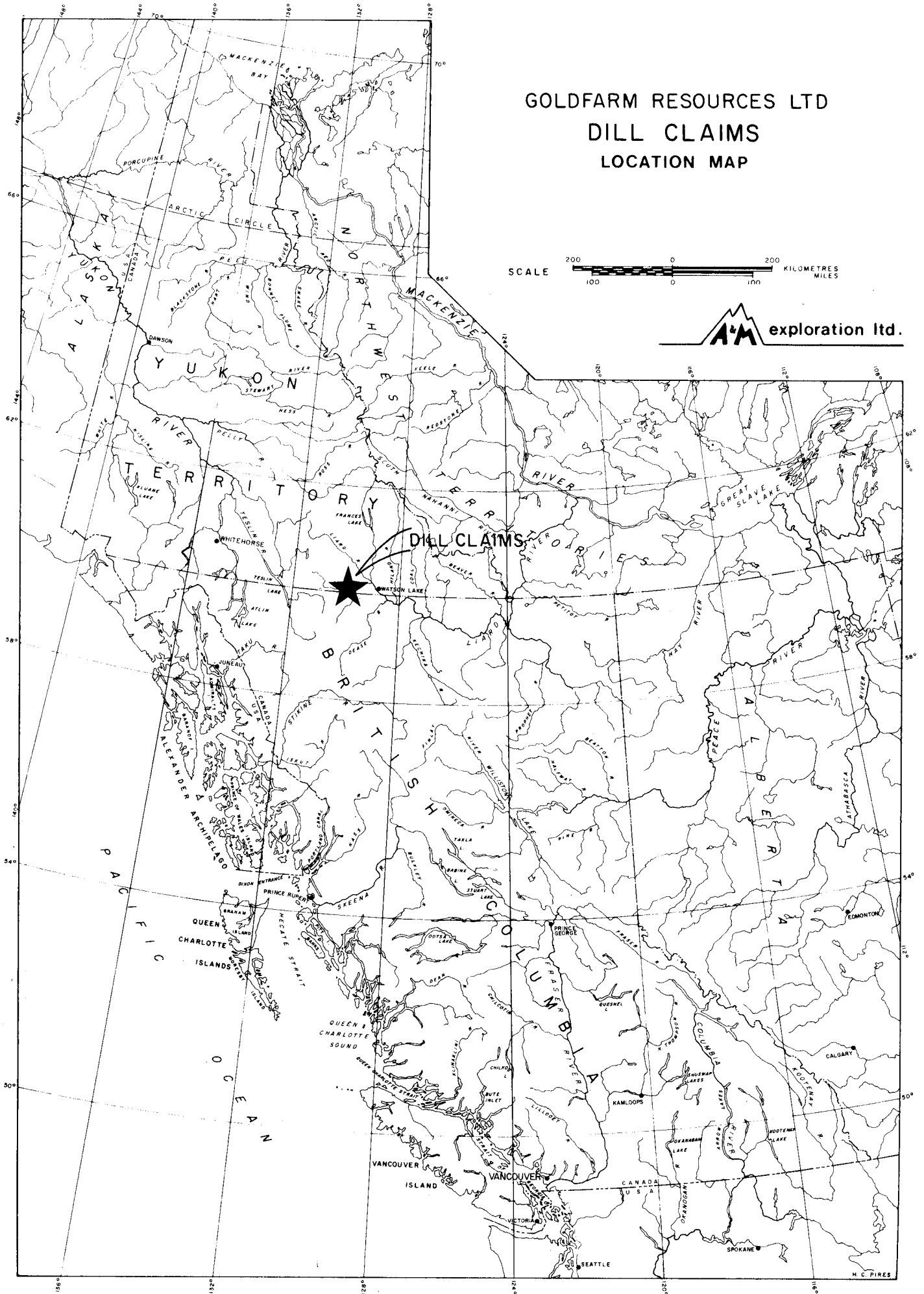
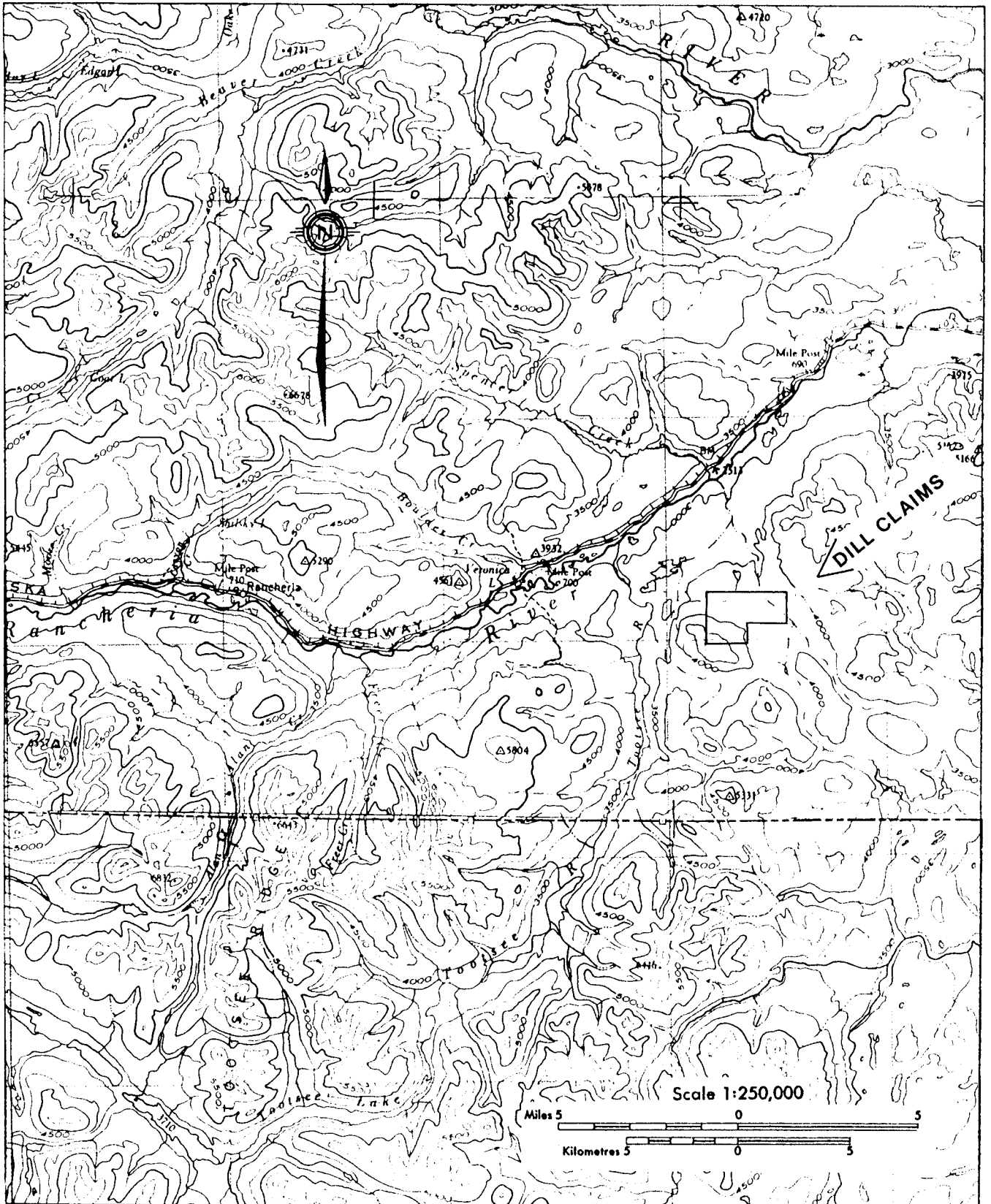


FIGURE - I



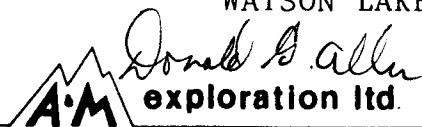
GOLDFARM RESOURCES LTD.

N.T.S. 104-0, 105-B

ACCESS MAP

DILL CLAIMS

WATSON LAKE MINING DIVISION - YUKON TERRITORY



The claims lie on the east side of the Tootsie River (Figure 2), a tributary of the Rancheria River, which in turn flows into the Liard River. Topography in the claim area is gentle to moderately steep and ranges from 3400 to 4900 feet. Slopes are covered with a virgin growth of balsam fir and spruce with a moderately thick underbrush. Valley bottoms are broad and boggy.

CLAIMS

The DILL claims are registered in the name of Goldfarm Resources Ltd. Claim data are as follows (Figure 3):

<u>Claim Name</u>	<u>Record Number</u>	<u>Expiry Date</u>
DILL 1-2	YA 69790-69791	Feb. 15, 1984
DILL 3-10	YA 69672-69679	Feb. 11, 1984
DILL 11-26	YA 69792-69807	Feb. 16, 1984
DILL 27-28	YA 69744-69745	Feb. 15, 1984
DILL 29-32	YA 69808-69811	Feb. 16, 1984

REGIONAL GEOLOGY

The DILL claims are in the Wolf Lake map sheet of Poole (1960). The regional geology and structure of the Midway area has been summarized by McIntyre (1982, 1983). According to McIntyre the area is:

"...within a north-trending belt of Middle to Late Devonian basinal facies sedimentary rocks. These rocks are preserved

within the core of a major synclinorium that is bounded and intruded by the Cretaceous Cassiar Batholith to the west and the Lower Cambrian carbonates of the Atan Group to the east (Gabrielse, 1969)."

PROPERTY GEOLOGY

The geology of the DILL claims has not been mapped in detail and outcrops are not abundant. According to Poole (1960), the claims are underlain by Devonian age McDame Limestone and Lower Sylvester group shale and sandstone. A few outcrops of limestone (unit 1), presumably of the McDame formation, occur in the northwest part of the claim group. The limestone contains crenulated phyllite layers. Foliation and bedding strike northwesterly and dip moderately to steeply to the northeast and southwest. Slate and phyllite (unit 2) were observed in float and outcrop in the southwest part of the claim group. Quartz-carbonate boulders up to twenty centimetres in diameter, chert and quartzite occur locally in float.

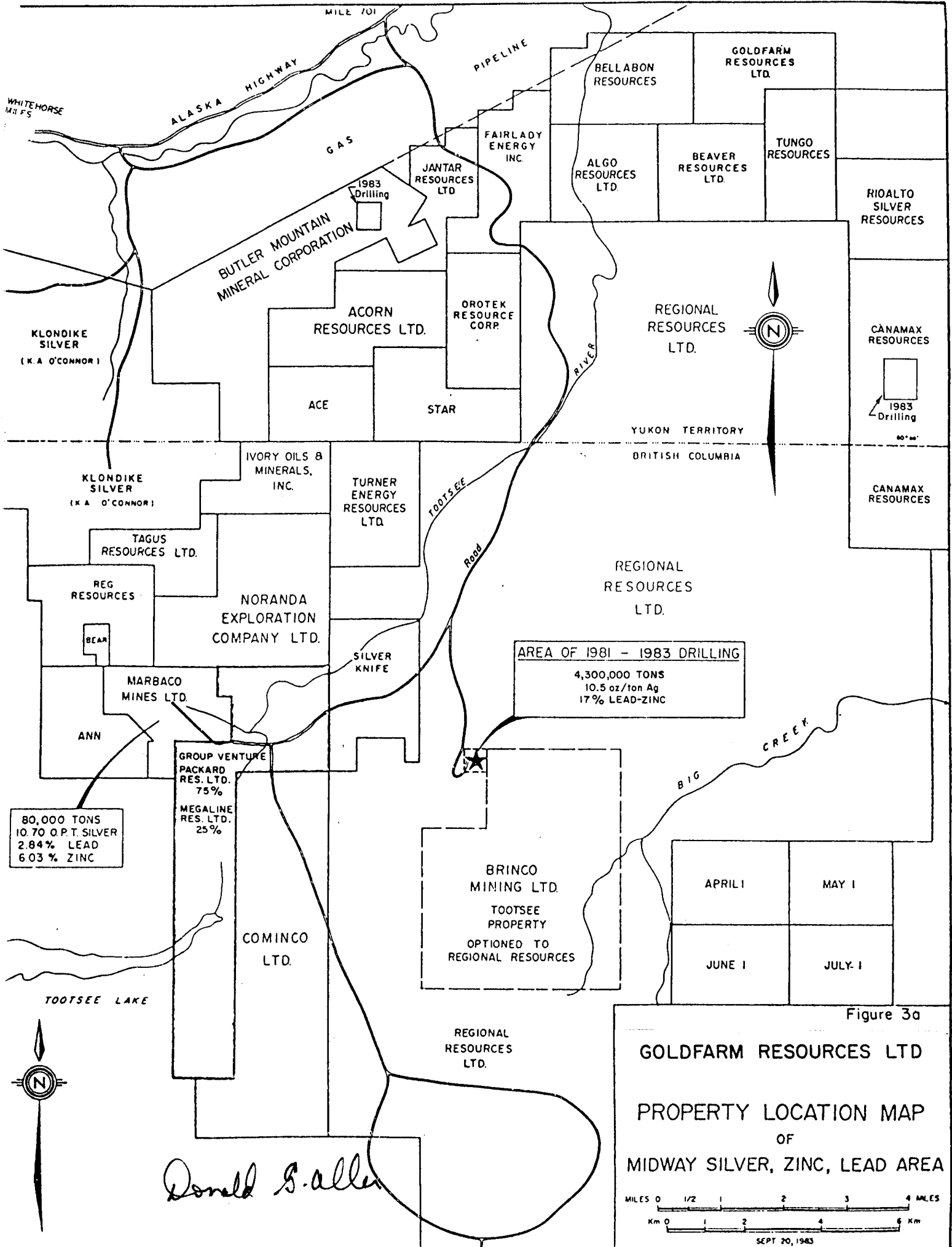
MINERAL DEPOSITS IN THE AREA

Mineral deposits in the Tootsie River area have been described by Christopher (1983). The nearby Midway deposit has been described by McIntyre (1982, 1983) and Stollery and Sellmer (1982), as a stratabound silver-rich massive pyrite-sphalerite-galena deposit within transgressive clastic rocks and platformal carbonates (Figures 3a and 4).

Exploration in the area has been intense in the past two years with a number of major and junior mining companies conducting property evaluations and grass-roots exploration (Figure 3a). Butler Mountain Minerals Corp. recently announced significant intersections of gold, silver, lead and zinc mineralization (Sept. 15, Oct. 14, 1983, company news releases) on their YP property nine kilometres to the southwest. Canamax Resources carried out diamond drilling on their HOT claims, a molybdenum-tungsten prospect seven kilometres to the southeast.

GEOCHEMISTRY

Preliminary geochemical soil sampling was carried out on widespaced lines across the DILL claims. Using claim lines as control, soil samples were taken at 100 metre intervals on flagged lines spaced about 500 metres apart. Samples were taken at depths of up to 35 centimetres in the B Horizon and consisted mainly of glacial till. Some difficulty was



MILE 701

ALASKA HIGHWAY

PIPELINE

WHITEHORSE
MILLS

GAS

FAIRLADY
ENERGY
INC.

BELLABON
RESOURCES

GOLDFARM
RESOURCES
LTD.

JANTAR
RESOURCES
LTD.

ALGO
RESOURCES
LTD.

BEAVER
RESOURCES
LTD.

TUNGO
RESOURCES

BUTLER MOUNTAIN
MINERAL CORPORATION

1983
Drilling

ACORN
RESOURCES LTD.

OROTEK
RESOURCE
CORP.

RIOALTO
SILVER
RESOURCES

KLONDIKE
SILVER
(K.A. O'CONNOR)

REGIONAL
RESOURCES
LTD.



CANAMAX
RESOURCES

1983
Drilling

ACE

STAR

YUKON TERRITORY
BRITISH COLUMBIA

CANAMAX
RESOURCES

KLONDIKE
SILVER
(K.A. O'CONNOR)

IVORY OILS &
MINERALS,
INC.

TURNER
ENERGY
RESOURCES
LTD.

TOOTSEE
Road

REGIONAL
RESOURCES
LTD.

TAGUS
RESOURCES LTD.

REG
RESOURCES

NORANDA
EXPLORATION
COMPANY LTD.

AREA OF 1981 - 1983 DRILLING
4,300,000 TONS
10.5 oz/ton Ag
17% LEAD-ZINC

BEAR

SILVER
KNIFE

MARBACO
MINES LTD.

ANN

GROUP VENTURE
PACKARD
RES. LTD.
75%

MEGALINE
RES. LTD.
25%

80,000 TONS
10.70 O.P.T. SILVER
2.84% LEAD
6.03% ZINC

BRINCO
MINING LTD.
TOOTSEE
PROPERTY
OPTIONED TO
REGIONAL RESOURCES

BIG
CREEK

APRIL 1

MAY 1

JUNE 1

JULY 1

COMINCO
LTD.

REGIONAL
RESOURCES
LTD.

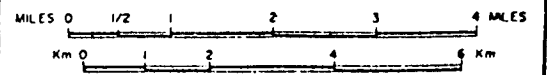
Figure 3a

GOLDFARM RESOURCES LTD

PROPERTY LOCATION MAP
OF
MIDWAY SILVER, ZINC, LEAD AREA



Donald S. Allen



SEPT 20, 1983

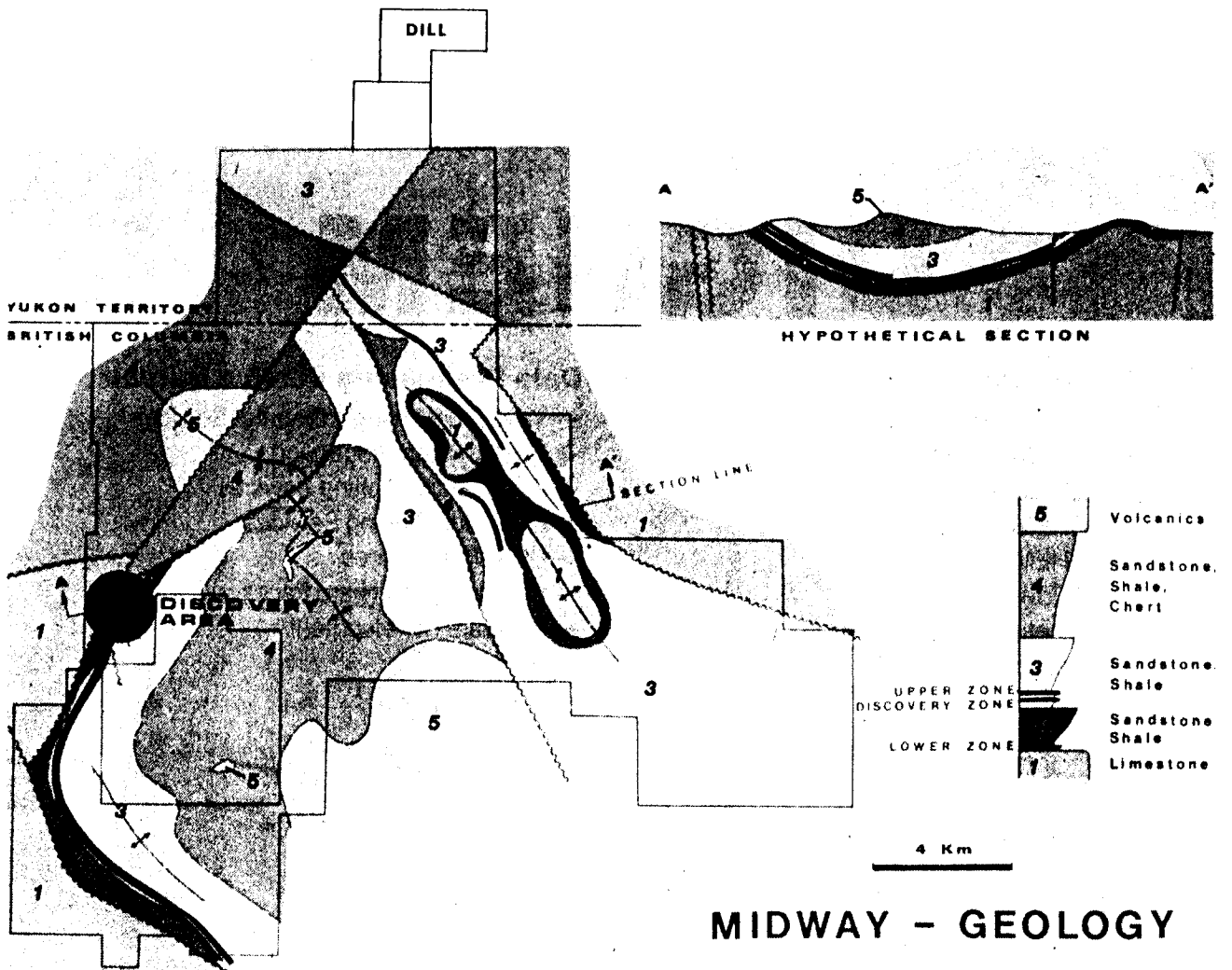


Figure 4 Geology of the Midway property shown in relation to the DILL claims (after Stollery and Sellmer, 1982).

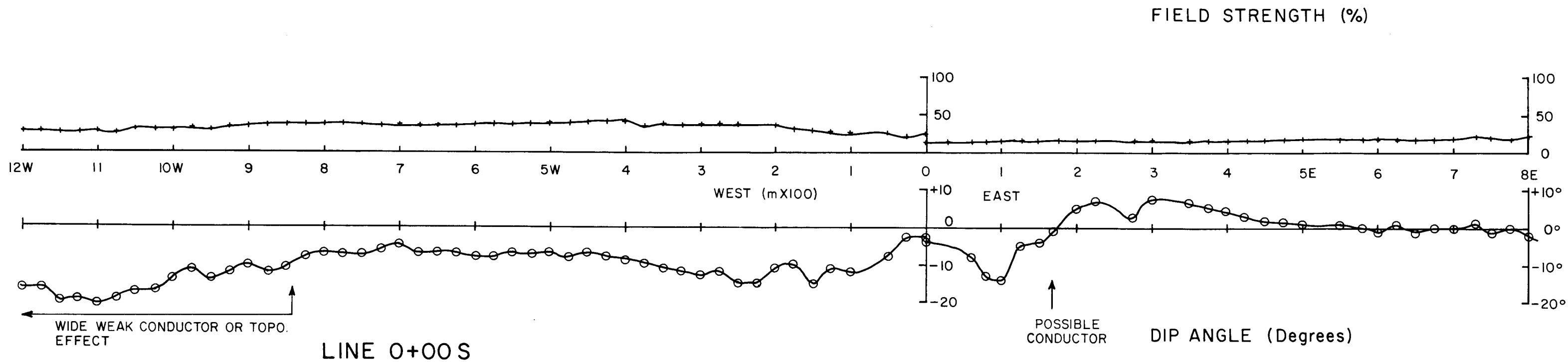
Donald G. Allen

encountered in obtaining soil samples on and to the east of the baseline because of the great thickness of peat and humus. Soil material was placed in Kraft paper sample bags and shipped to Rossbacher Laboratory for analyses of molybdenum, copper, silver, zinc and lead by standard atomic absorption techniques. Sample sites are plotted on Figure 4 along with anomalous zinc (≥ 150 ppm) and/or lead (≥ 30 ppm) and sample results are presented in Appendix I.

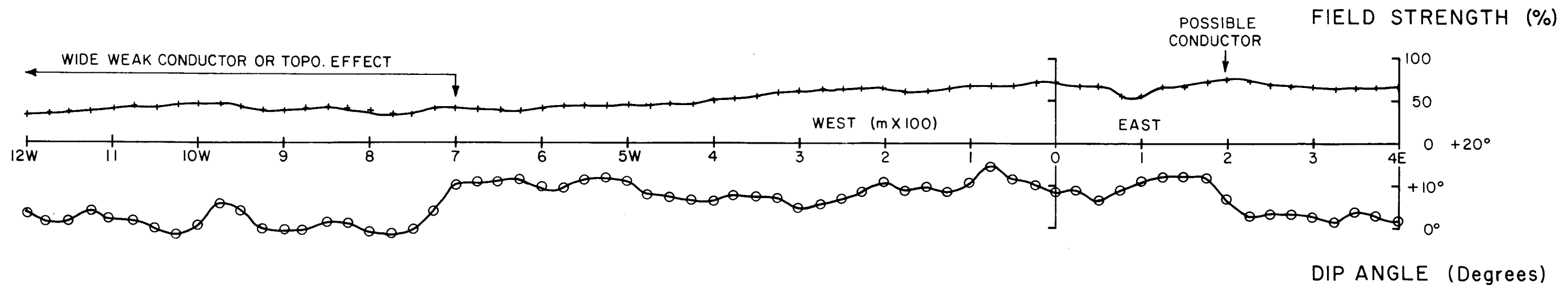
Weakly to moderately anomalous zinc (≥ 150 ppm), lead (≥ 30 ppm) and silver (≥ 1 ppm) were obtained in the west central part of the claim group. This anomalous area appears to trend northwesterly, roughly parallel to bedding and foliation in bedrock. Scattered anomalous areas occur elsewhere in the claim area but because of the wide spacing of samples, no particular trend can be defined. Of particular significance is a single soil sample containing 560 ppm Zn and 56 ppm lead on the DILL 3 claim.

VLF-EM SURVEY

Two test lines of VLF-electromagnetic observations were conducted on Line 0 and Line 5 S. A Sabre Model 21 VLF-EM receiver tuned to Cutler Maine, U.S.A. (17.8 KHz) was used for the survey. Observations of field strength and dip angle were made at 25 metre stations along the lines. Profiles of the obtained data are presented on Figure 5.



STATION : CUTLER, MAINE
 OPERATOR FACING WEST

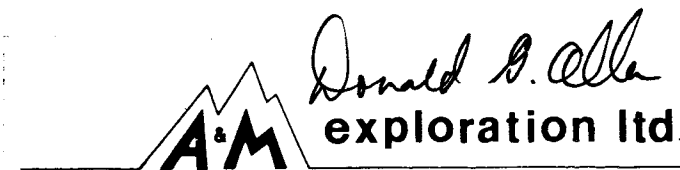


GOLDFARM RESOURCES LTD.
 DILL CLAIMS
 WATSON LAKE MINING DIVISION - YUKON

VLF-EM PROFILES

Oct. 12, 1983

Figure 6



One weak conductor was located at station 1 + 90 E on Line 5 + 00 S. The anomaly has a peak to peak dip angle response of less than ten degrees, and an associated relative normalized field strength high of 8%. Further surveying in this area is required to define this anomaly.

The dip angle cross over at 1 + 70 E on Line 0 South may be caused by "topographic effect". The weak signal strength measured at the time the station was observed does not allow the field strength data to be used for interpretation of this anomaly.

The other zones marked as wide-weak conductors, or topographic effects - are most likely caused by topographic effects and therefore are of little interest.

EXPLORATION POTENTIAL

The geochemical anomalies on the DILL claims trend parallel to bedding suggesting a stratigraphic control and hence some potential for hosting stratabound mineralization of the "Midway" type. The limestone - phyllite contact on the DILL claims is the same horizon at which the lower zone of the Midway deposit occurs.

Donald G. Allen

REFERENCES


- Christopher, P. A. (1983). Geological Report, DILL 1-32 Claims. Private Report for Goldfarm Resources Ltd.
- McIntyre, D. G. (1983). A Comparison of the Geologic Setting of the Stratiform Massive Sulfide Deposits of the Gataga District with the Midway and Windy-Craggy Deposits, Northern British Columbia in B.C. Ministry of Energy, Mines & Petroleum Resources. Paper 1983-1, pp. 149-170.
- McIntyre, D. G. (1982). Midway Occurrence in B.C. Ministry of Energy Mines & Petroleum Resources. Paper 1982-1, pp. 162-166.
- Stollery, J. W. and Sellmer, W. H. (1982). Midway, An Analysis of a New Massive Sulphide Discovery. Canadian Mining Journal, Vol. 103, No. 4, pp. 68-71.
- Poole, W. H. et al (1960). Wolfe Lake Map Area, Yukon Territory, Geol. Surv. Canada Map 10-1960.
- Gabrielse, H. (1969). Geology of the Jennings River Map-Area, Geol. Surv. Canada. Paper 68-55.

CERTIFICATE

I, Donald G. Allen certify that:

1. I am a Consulting Geological Engineer, resident at 4570 Hoskins Road, North Vancouver, B.C.
2. I am a graduate of the University of British Columbia with degrees in Geological Engineering. (B.A.Sc., 1964; M.A.Sc., 1966)
3. I have been practising my profession since 1964.
4. I am a member in good standing of the Association of Professional Engineers of British Columbia.
5. This report is based on fieldwork carried out personally on September 4 to 6, 1983, and on information listed under References.
6. I hold no interest, nor do I expect to receive any, in the DILL claims. I am, however a director and shareholder of Goldfarm Resources Ltd.
7. I consent to the use of this report in a Statement of Material Facts or in a Prospectus in connection with the raising of funds for the project covered by this report.

January 20, 1984
North Vancouver, B.C.


Donald G. Allen,
P. Eng. (B.C.)

APPENDIX I
ANALYTICAL RESULTS

Kossbacher Laboratory Ltd.

GEOCHEMICAL ANALYSTS & ASSAYERS

CERTIFICATE OF ANALYSIS

TO: **A & M EXPLORATION LTD.**

BURNABY, B. C.
CANADA
TELEPHONE: 299-6910

CERTIFICATE NO. **83437-1**

INVOICE NO. **3260**

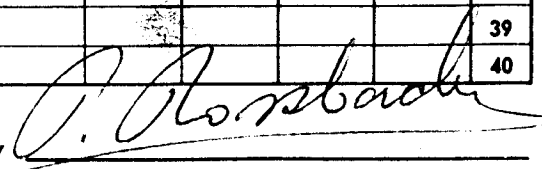
DATE ANALYSED **SEPT 22, 1982**

PROJECT **195**

No.	Sample	pH	Mo	Cu	Ag	Zn	Pb					No.
01	195 AS 285		2	28	0.4	114	18					01
02	286		2	16	0.4	84	14					02
03	287		2	10	0.2	112	14					03
04	288		1	10	0.2	72	10					04
05	289		1	12	0.2	90	12					05
06	290		1	18	0.2	92	16					06
07	291 A		2	22	0.2	68	20					07
08	291 B		3	22	0.2	92	22					08
09	293		2	12	0.2	58	12					09
10	195 AS 294		3	8	0.2	156	20					10
11	295		3	8	0.2	106	28					11
12	296		1	16	0.2	70	18					12
13	297		2	24	0.2	100	16					13
14	298		2	26	0.2	78	18					14
15	299		3	20	0.2	88	14					15
16	300		3	26	0.2	126	18					16
17	301		1	20	0.2	112	16					17
18	302		4	18	0.2	82	16					18
19	303		1	18	0.2	72	10					19
20	195 AS 304		2	32	0.8	134	14					20
21	305		1	24	0.4	146	18					21
22	306		1	30	0.4	150	14					22
23	307		2	28	0.4	196	16					23
24	308		1	26	0.4	146	14					24
25	309		1	26	0.4	140	12					25
26	310		1	22	0.2	140	14					26
27	311		1	22	0.4	130	18					27
28	312		1	22	0.2	144	16					28
29	313		1	20	0.2	118	16					29
30	195 AS 314		1	28	0.4	136	14					30
31	315		1	34	0.6	148	18					31
32	316		1	24	0.4	148	20					32
33	317		1	24	0.8	108	16					33
34	318		1	14	0.2	94	10					34
35	319		1	18	0.8	108	16					35
36	320		1	24	0.2	166	12					36
37	321		16	40	0.6	304	20					37
38	322		1	18	0.2	166	14					38
39	STD E		2	76	0.2	154	16					39
40												40

VALUES IN PPM, UNLESS NOTED OTHERWISE.

Certified by



Kossbacher Laboratory Ltd.

BURNABY, B. C.
CANADA
TELEPHONE: 299-6910

GEOCHEMICAL ANALYSTS & ASSAYERS

CERTIFICATE OF ANALYSIS

CERTIFICATE NO. 83437-2

INVOICE NO. 3260

TO: A & M EXPLORATION LTD.

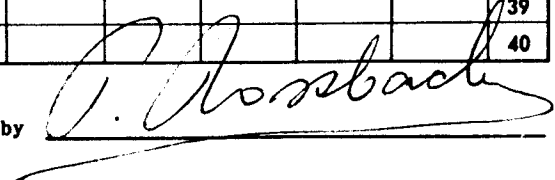
DATE ANALYSED SEPT 22, 1983

PROJECT 195

No.	Sample	pH	Mo	Cu	Ag	Zn	Pb					No.
01	195 GS 04		3	34	0.2	106	24					01
02	05		2	28	0.2	180	18					02
03	06		1	26	0.2	90	18					03
04	07		3	20	0.2	82	20					04
05	08		3	28	0.2	88	18					05
06	09		1	16	0.2	90	24					06
07	10		3	20	0.2	74	12					07
08	11		2	44	0.6	62	14					08
09	12		2	22	0.2	84	14					09
10	195 GS 13		2	18	0.2	84	14					10
11	14		2	20	0.2	86	18					11
12	15		2	16	0.2	82	16					12
13	16		2	16	0.2	68	16					13
14	17		2	18	0.2	194	14					14
15	18		3	30	0.2	206	16					15
16	19		3	24	0.2	230	20					16
17	20		2	30	0.2	134	16					17
18	21		2	28	0.2	140	18					18
19	22		3	20	0.2	128	22					19
20	195 GS 23		2	22	0.2	130	24					20
21	24		4	26	0.2	96	24					21
22	25		3	22	0.2	98	20					22
23	26		4	24	0.2	90	16					23
24	27		5	24	0.2	126	18					24
25	28		4	20	0.2	146	20					25
26	29		2	22	0.2	170	20					26
27	30		1	26	0.2	114	14					27
28	31		2	32	0.2	90	18					28
29	32		1	28	0.2	100	16					29
30	195 GS 33		2	26	0.2	134	20					30
31	34		1	22	0.2	108	16					31
32	35		1	28	0.2	112	18					32
33	36		1	24	0.2	102	20					33
34	37		1	22	0.2	136	16					34
35	38		1	28	0.2	148	22					35
36	39		1	20	0.2	100	16					36
37	40		1	26	0.2	100	18					37
38	41		1	22	0.2	82	16					38
39	42		1	24	0.2	82	16					39
40	STD D		2	122	4.2	474	90					40

VALUES IN PPM, UNLESS NOTED OTHERWISE.

Certified by



Kossbacher Laboratory Ltd.

GEOCHEMICAL ANALYSTS & ASSAYERS

CERTIFICATE OF ANALYSIS

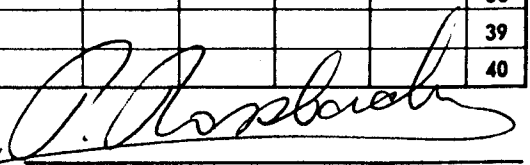
TO: **A & M EXPLORATION LTD.**

BURNABY, B. C.
CANADA
TELEPHONE: 299-6910

CERTIFICATE NO. **83437-3**
INVOICE NO. **3260**
DATE ANALYSED **SEPT 26/83**
PROJECT **195**

No.	Sample	pH	Mo	Cu	Ag	Zn	Pb					No.
01	195 GS 43		1	24	0.2	94	16					01
02	44		1	22	0.2	122	14					02
03	45		1	16	0.2	102	12					03
04	46		1	20	0.2	130	16					04
05	47		1	24	0.2	92	18					05
06	48		1	20	0.2	78	12					06
07	49		2	22	0.2	74	12					07
08	50		2	26	0.2	68	16					08
09	51		1	30	0.2	76	6					09
10	195 GS 52		2	22	0.2	112	14					10
11	53		3	20	0.2	98	12					11
12	54		2	20	0.2	94	12					12
13	55		2	24	0.2	140	18					13
14	56		1	22	0.2	144	18					14
15	57		3	26	0.2	122	18					15
16	58		2	20	0.2	146	16					16
17	59		2	14	0.2	82	14					17
18	60		2	18	0.2	134	14					18
19	61		1	16	0.2	98	10					19
20	195 GS 62		2	24	0.2	144	16					20
21	63		2	22	0.2	108	14					21
22	64		2	24	0.2	118	16					22
23	65		3	36	0.2	106	14					23
24	66		3	28	0.2	98	12					24
25	67		3	22	0.2	96	12					25
26	68		4	24	0.2	124	20					26
27	69		4	28	0.6	108	22					27
28	70		3	24	0.2	94	14					28
29	71		3	24	0.2	90	12					29
30	195 GS 72		4	28	0.2	62	12					30
31	73		4	32	0.4	110	12					31
32	74		4	28	0.4	96	22					32
33	75		14	26	0.2	256	20					33
34	76		7	14	0.2	282	32					34
35	77		7	26	0.2	436	46					35
36	78		20	24	0.6	446	22					36
37	79		5	30	0.2	142	16					37
38	80		4	20	1.6	120	18					38
39	81		4	22	0.2	100	14					39
40	STD B		29	150	1.0	138	94					40

VALUES IN PPM, UNLESS NOTED OTHERWISE.

Certified by 

Kossbacher Laboratory Ltd.

GEOCHEMICAL ANALYSTS & ASSAYERS

BURNABY, B. C.
CANADA
TELEPHONE: 299-6910

CERTIFICATE OF ANALYSIS

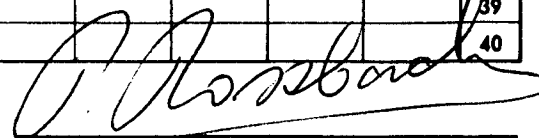
CERTIFICATE NO. 83437-4
INVOICE NO. 3260
DATE ANALYSED SEPT 26/83
PROJECT 195

TO: A & M EXPLORATION LTD.

No.	Sample	pH	Mo	Cu	Ag	Zn	Pb				No.
01	195 GS 82		1	24	0.4	138	16				01
02	83		1	18	0.2	116	14				02
03	84		2	30	0.2	268	22				03
04	85		1	18	0.2	224	14				04
05	86		2	24	0.4	284	20				05
06	87		2	32	0.4	196	16				06
07	88		2	30	0.6	178	14				07
08	89		3	60	1.0	112	16				08
09	90		2	38	0.4	130	16				09
10	195 GS 91		5	28	0.2	144	18				10
11	92		5	22	0.2	114	14				11
12	93		2	28	0.2	104	12				12
13	94		2	22	0.4	130	14				13
14	95		1	22	0.4	560	56				14
15	96		7	30	0.2	128	28				15
16	97		2	42	0.6	138	12				16
17	98		2	22	0.4	122	14				17
18	195 GS 99		3	66	1.8	228	18				18
19	STD C		17	184	0.6	116	78				19
20											20
21											21
22											22
23											23
24											24
25											25
26											26
27											27
28											28
29											29
30											30
31											31
32											32
33											33
34											34
35											35
36											36
37											37
38											38
39											39
40											40

VALUES IN PPM, UNLESS NOTED OTHERWISE.

Certified by



APPENDIX II
AFFIDAVIT OF EXPENSES

AFFIDAVIT OF EXPENSES

This will certify that geological mapping, geochemical sampling and VLF-EM surveys were carried out during the period September 3 to 5, 1983, on the DILL 1-32 claims, Watson Lake Mining District, Yukon Territory to the value of the following:

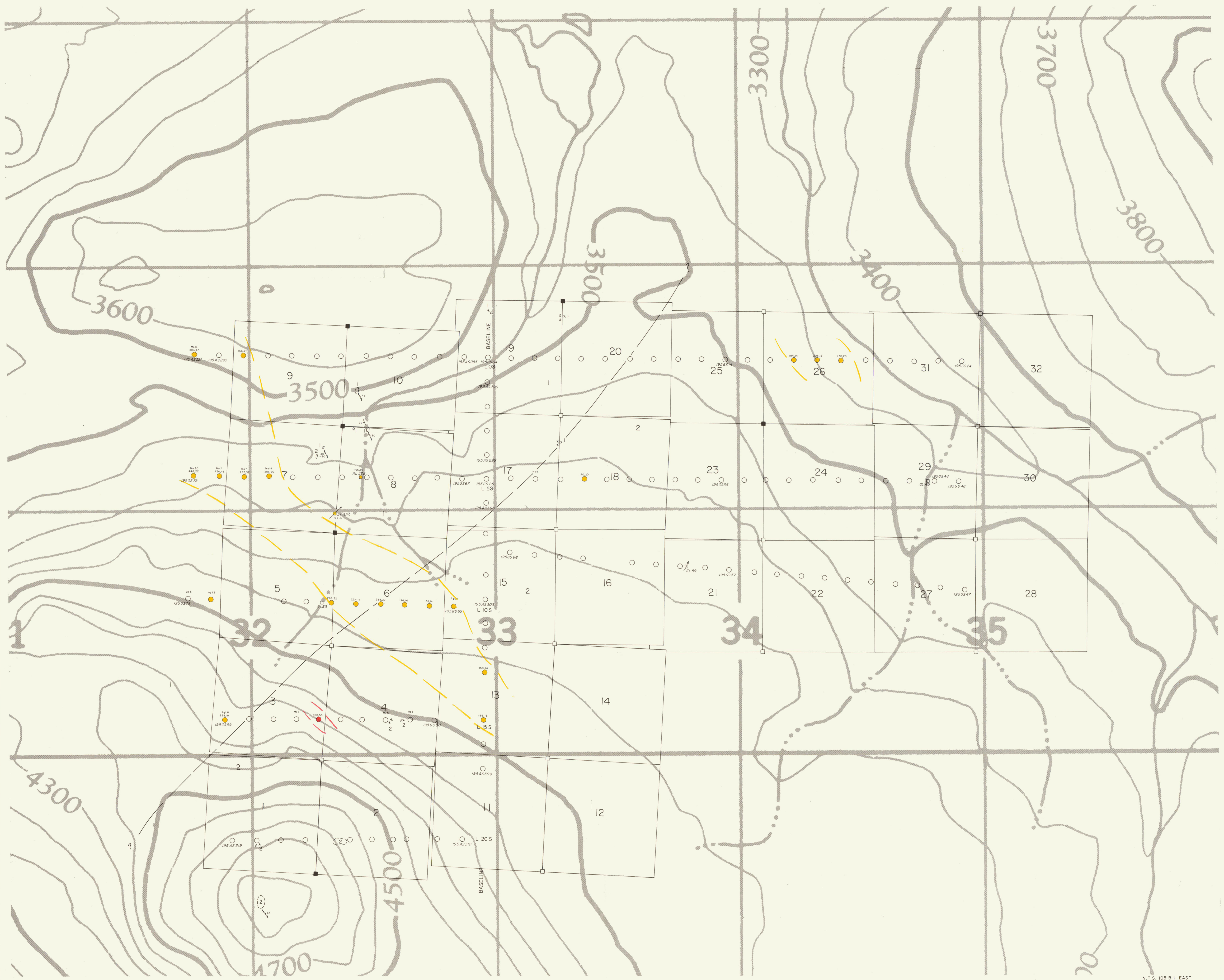
Costs incurred within the Yukon Territory

Salaries		
D.G. Allen	4 days @ \$350	\$1,400.00
A. Geoghegan	4 days @ \$100	400.00
Room and board		339.47
Helicopter support		1,203.53
Field supplies		219.71
VLF-EM rental		175.00
Vehicle rental and travel expenses		487.15
Telephone		30.82
	subtotal	<u>\$4,255.68</u>

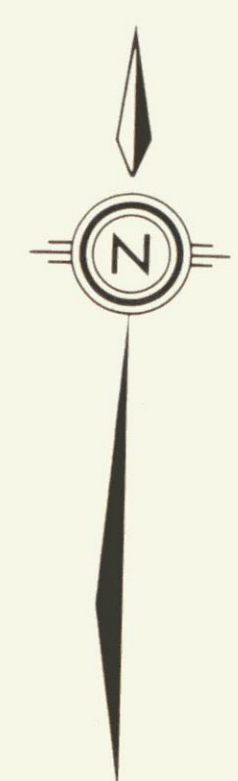
Costs incurred outside the Yukon Territory

Geochemical analyses		\$ 638.90
Report preparation		
D.G. Allen	1.5 days @ \$350	525.00
Typing, draughting, compilation		
26 hours @ \$15		390.00
Maps, photocopying		82.73
	subtotal	<u>\$1,636.63</u>
	GRAND TOTAL	<u>\$5,892.31</u>

Donald G. Allen



N.T.S. 105 B 1 EAST



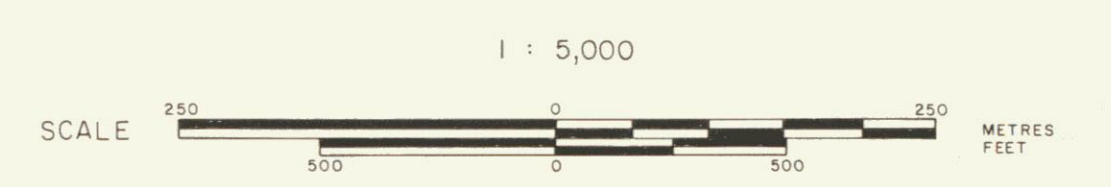
LEGEND

- 2 DEVONIAN MISSISSIPPIAN
Phyllite, slate, minor chert.
- 1 SILURIAN AND DEVONIAN
Limestone, phyllitic limestone.

- Outcrop boundary
- Float
- Geological contact, inferred.
- Bedding, foliation
- Fault
- Soil sample site, sample number; ppm Zn, ppm Pb.
- Silt sample site, sample number; ppm Zn, ppm Pb.
- Creek
- Claim post; observed, inferred position
- Claim boundary

Note: Geochemical values plotted where: ppm Zn ≥ 150 or ppm Pb ≥ 30; ppm Ag ≥ 1.0; ppm Mo ≥ 5.

GOLDFARM RESOURCES LTD.
DILL CLAIMS
WATSON LAKE MINING DIVISION - YUKON
GEOCHEMICAL & GEOLOGICAL MAP



Oct. 11, 1983

091515
Figure 5