



ASSESSMENT REPORT
 RAGS 1-8 CLAIMS
 (YA 75053 - YA 75060)
~~YUKON~~ MINING DISTRICT
 NTS 105-J-5
 PROSPECTING AND GEOCHEMICAL SAMPLING
 AUGUST 15th 1983

091484

Latitude: 63²° 28' N
 Longitude: 131° 50' W

By: A. D. McLaughlin
 September 1983

This report has been examined by
the Geological Evaluation Unit
under Section 53 (4) Yukon Quartz
Mineral Act and is offered as
report of value to the amount
of \$ 800-

for P. Watson
Regional Manager, Exploration and
Geological Services for Commissioner
of Yukon Territory.

TABLE OF CONTENTS

1.	<u>GENERAL</u>	
1.1	Introduction	Page 1
1.2	Work, Access and Physiography	Page 1
2.	<u>GEOLOGY</u>	
2.1	Regional Geology	Page 1
2.2	Structural Geology and Metamorphism	Page 1
3.	<u>CLAIM GROUP EXPLORATION</u>	
3.1	Geology and Mineralization	Page 2
3.2	Geochemistry	Page 2
3.3	Discussion	Page 2

List of Figures

Figure 1	Location Map
Figure 2	Compilation Map

List of Appendices

Appendix A	Analytical Methods and Sample Descriptions
Appendix B	Statement of Costs
Appendix C	Statement of Qualifications

1. GENERAL

1.1 Introduction

This report describes the 1983 exploration work and expenditures by Agip Canada Ltd. on the RAGS 1-8 quartz mineral claims (YA 75053 - YA 75060). The claims are located in south-central Yukon, approximately 60 kilometers northeast of Ross River on map sheet NTS 105-J-5.

The claims were recorded on September 9th 1982. The area is shown on Figure 1.

1.2 Work, Access and Physiography

Exploration work consisted of geological mapping, prospecting and geochemical sampling. Work was carried out from Ross River using a Bell 206-B Jet Ranger, owned by Trans North Turbo Air, to transport field crews to the area.

The area is one of moderate to high relief, with most of the RAGS claim group above treeline. The terrain is not too rugged, reflecting the flat-lying nature of the volcanic rocks.

2. GEOLOGY

2.1 Regional Geology

The entire claim block area is underlain by the South Forks volcanic rocks which unconformably overlies sedimentary rocks of the southwestern part of the Selwyn Basin. This basin was a site of marine deposition near the western edge of the North American craton from Late Proterozoic times until the Triassic period. Cretaceous granodiorites and quartz monzonites underlie and also intrude the South Fork volcanics.

The volcanics consist of a suite of subaerial calc-alkaline rocks of mid-Cretaceous age. They are divided into a lower sequence of mainly andesite and basalt flows and an upper sequence of dark dacite flows and tuffs.

2.2 Structural Geology and Metamorphism

The sedimentary rocks of the Selwyn Basin were thrust and folded during late Jurassic and early Cretaceous times. The South Fork volcanics are relatively undeformed and have only locally undergone lower greenschist metamorphism.

3. CLAIM GROUP EXPLORATION

3.1 Geology and Mineralization

The only rock type observed on the claim block is the dark-coloured dacite with phenocrysts of quartz, biotite, feldspar and locally hornblende. The rock is often columnar jointed with minor volcanic breccia units. Bedding is apparently subhorizontal. The dacite is essentially unaltered with only minor iron staining and thin zeolite, calcite, quartz or gypsum coatings along fracture and joint surfaces.

Several fault zones trending NE cut the dacite pile. The faults are the foci for increased zeolite, calcite, quartz and gypsum veining and locally clay gouge up to one meter wide. The wallrock in these cases is bleached and hematitic over a narrow zone (less than one meter). Parallel zones of sheared chloritized rock are commonly present by the fault zones.

3.2 Geochemistry

Five rock samples were collected from the property (Figure 2) and analyzed for Au, Ag and Hg. Sample descriptions and results are presented in Appendix B. Only background results were returned.

3.3 Discussion

There are no major indications of precious metal mineralization. The minor veining located may be indicative of at least minor hydrothermal activity, although a deuteritic origin cannot be ruled out. The lack of mineralization, structural activity and widespread hydrothermal activity downgrade the potential of this claim block.



8	6	4	2
RAGS			
YA75060	YA75058	YA75056	YA75054
7 ←	5 ←	3 ←	1 ←
YA75059	YA75057	YA75055	YA75053

0 500 1000
METERS

AGIP CANADA LTD

RAGS 1-8
CLAIMS
LOCATION MAP

NTS 105-J-5

SCALE	AUTHOR	DATE	FIGURE
1:31,680	ADM	SEPT/1983	1

APPENDIX A

Analytical Methods

Rock chip samples are pulverized and a split of the minus 100 mesh fraction is analysed.

Silver analyses: the sample is dissolved in hot aqua regia and analysed by atomic absorption spectrophotometry. Silver analyses require a correction for background.

Gold analyses are by fire assay techniques but, after preparation of the bead, it is dissolved in acid and the gold content determined by atomic absorption spectrophotometry.

Mercury analyses are by flameless atomic absorption spectrophotometry after sample digestion.

RAGS CLAIMS SAMPLE DESCRIPTION

<u>Sample No.</u>	<u>Type</u>	<u>Description</u>
0341006	Rock	Chloritized sheared dacite
0341007	Rock	Float quartz/gypsum/calcite boulder
0341008	Rock	Float quartz/gypsum/calcite boulder
0341009	Rock	Clay gouge
0341010	Rock	1 meter chip of above with gypsum and zeolite veinlets \leq 2 cm, minor hematite staining in dacite wallrock

APPENDIX B

Statement of Costs

1.	<u>Labour</u>	
	Agip Canada Personnel:	
	A. D. McLaughlin, Project Geologist: 1 day @ \$189/day	\$189.00
	L. Lalonde, Senior Assistant: 1 day @ \$105/day	105.00
		<hr/>
		\$294.00
		=====
2.	<u>Geochemistry</u>	
	Analyses by Bondar-Clegg and Co. Ltd., Vancouver:	
	5 rock samples @ \$14.20 each	\$71.00
		=====
3.	<u>Helicopter</u>	
	Bell 206-B chartered from Trans North Turbo Air, Ross River, Yukon:	
	1.5 hours @ \$500/hour	\$750.00
	Plus: Fuel @ \$48/hour	72.00
		<hr/>
		\$822.00
		=====
4.	<u>Truck</u>	
	Truck rented from Norcan Leasing of Whitehorse, Yukon, pro- viding transportation from Ross River to Whitehorse and transport in Ross River:	
	120 km @ \$0.27/km	\$32.40
	Rental: 1 day @ \$40/day	40.00
	Fuel	11.11
		<hr/>
		\$83.51
		=====
5.	<u>Hotel and Food</u>	
	Welcome North Inn, Ross River, Yukon:	
	1 room for 1 night @ \$71/night	\$71.00
	Estimated food costs @ \$19.50/man day for 2 man days	39.00
		<hr/>
		\$110.00
		=====
	TOTAL COSTS OF PHYSICAL WORK FOR ASSESSMENT CREDIT ON RAGS 1-8 CLAIMS:	\$1,380.51
		=====

APPENDIX C

Statement of Qualifications

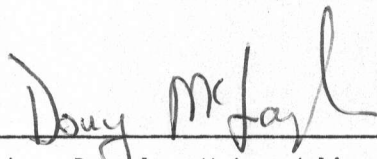
I, ARTHUR DOUGLAS McLAUGHLIN, of the City of Calgary in the Province of Alberta, HEREBY CERTIFY:

THAT I am a geologist employed by Agip Canada Ltd. AND
THAT I caused to be performed the work described in
this report;

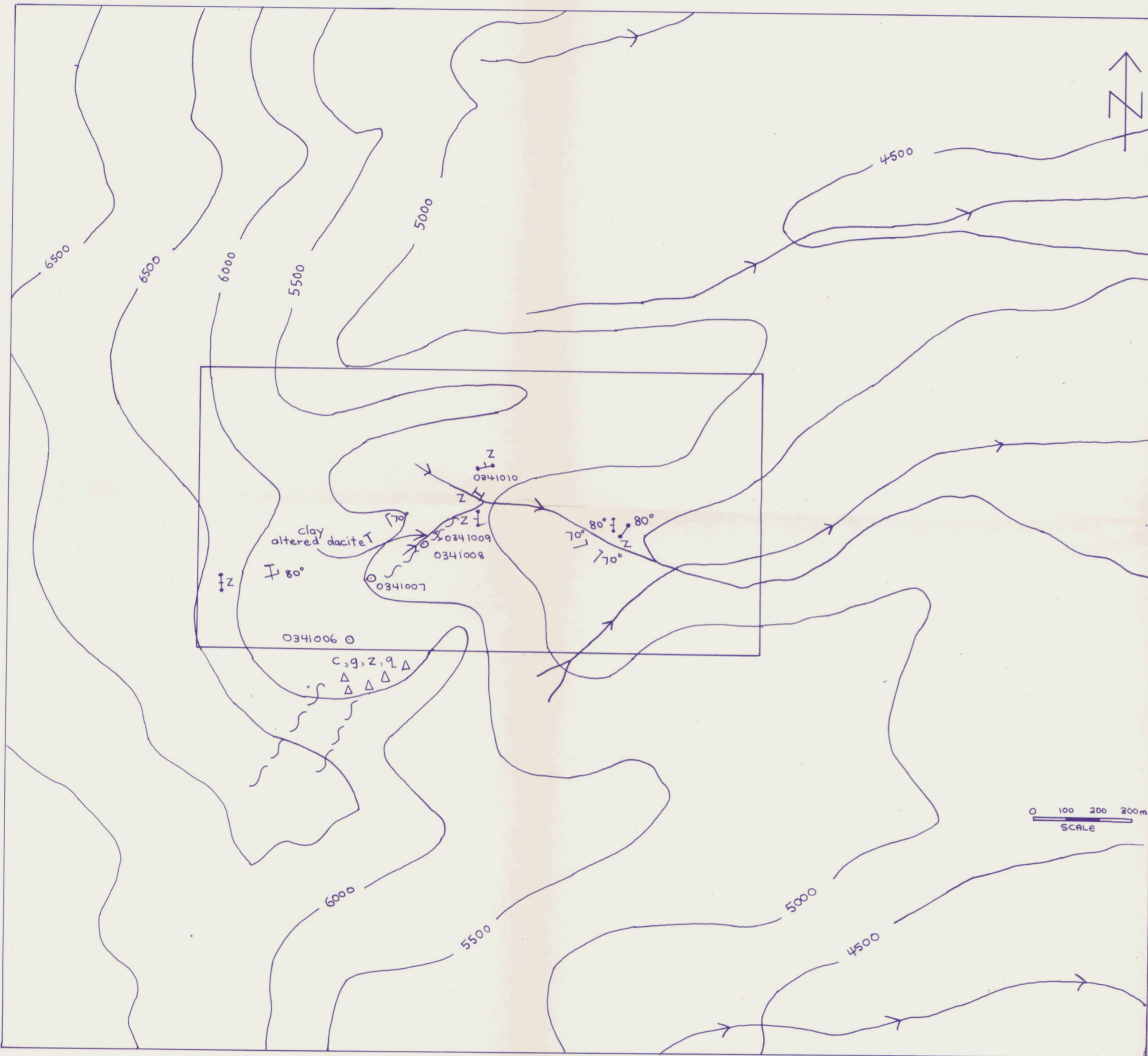
THAT I obtained a Bachelor of Science degree in Geology
from Acadia University, Nova Scotia, in 1977;

THAT I have been engaged in mineral exploration on a
full-time and part-time basis for five years, of which
two years have been spent on exploration programs in
the Yukon Territory.

SIGNED at the City of Whitehorse in the Yukon Territory this 6th day
of September, 1983.



Arthur Douglas McLaughlin



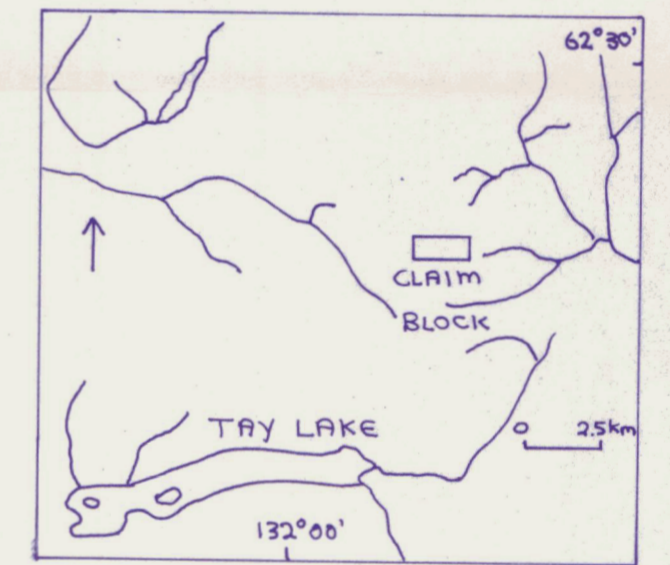
LEGEND

- Claim Boundary
- Topographic Contour (feet)
- Creek
- Rock Sample (grab, chip)
- Fault
- Joint (inclined, vertical)
- Vein (inclined, vertical)
- Veined Boulder; zeolite mineral, calcite, gypsum, quartz

Entire map area underlain by Cretaceous South Forks dacite tuffs and flows

GEOCHEMISTRY

Sample Number	Type	Au (ppb)	Ag (ppm)	Hg (ppb)
0341006	rock, grab	< 5	< 0.2	75
0341007	rock, grab	< 5	< 0.2	65
0341008	rock, grab	< 5	< 0.2	25
0341009	rock, lmchip	< 5	< 0.2	170
0341010	rock, lmchip	< 5	< 0.2	25



0341010

Agip Canada Ltd.	PROJECT NO.	400200
	SCALE	1:10,000
TITLE: COMPILATION MAP	NTS:	105-J-5
	SURVEYED BY:	ADM, LL
	DRAWN BY:	ADM
PROJECT: RAGS 1-8 CLAIMS	APPROVED BY:	
	DATE	SEPT 83
	FIGURE	2