

ASSESSMENT REPORT
OVERBURDEN DRILLING
BRICK CLAIMS
BRICK 2 AND 4 (YA 62946, 62948)
091455

MAYO MINING DISTRICT

NTS 105 O/7

LATITUDE: 63°18'N
LONGITUDE: 131°00'W

By: T. Garagan
May 9, 1983

FROM Mining Recorder at MAYO

TO: Regional Manager, Mineral Rights at Whitehorse, Y.T.

FOR ACTION ARE:

NEW APPL'N for PLACER LEASE to PROSPECT: Name:

RENEWAL APPL'N PLACER LEASE to PROSPECT: Name:

AFFIDAVIT of EXPENDITURE on PLACER LEASE. Name:

SECURITY DEPOSIT

FINANCIAL ABILITY

ASSIGNMENT of PLACER LEASE No. _____
From: _____ To: _____

GROUPING APPL'N UNDER SEC. 52(2) PLACER MINING ACT.
Owner: _____

~~DIAMOND~~ overburden DRILL LOGS:

Claims: Brick + Neve

Claim sheet no: 105-0-7

QUARTZ ASSESSMENT REPORT:
Claims: _____

Claim sheet no: _____

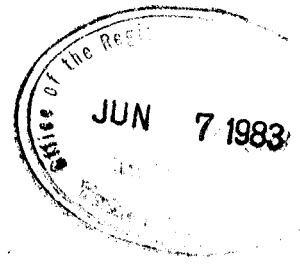
Type of report: _____

Submitted by: _____

Cls. work performed on _____

\$ Req. for ren. application _____

[Signature]
Signature



Lease No. _____

Lease No. _____

REPLY ACTION.

Date Ret. _____

001455

TABLE OF CONTENTS

1. INTRODUCTION	1
1.1 General Statement	1
1.2 Location, Access and Physiography	1
2. WORK PROGRAM	2
2.1 Introduction	2
2.2 Geochemistry	2
3. DISCUSSION	4

LIST OF FIGURES

Figure 1	Distribution of BRICK/NEVE Claims
Figure 2	Saddle Zone Overburden Drill Hole Locations
Figure 3	Western Zone Overburden Drill Hole Locations
Figure 4	Canol Zone Overburden Drill Hole Locations

LIST OF APPENDICES

Appendix A	Claim Names and Grant Numbers
Appendix B	Analytical Methods and Results
Appendix C	Statement of Costs
Appendix D	Statement of Qualifications

1. INTRODUCTION

1.1 General Statement

This report describes work carried out on the BRICK 1-12 claims (YA 62945-YA 62956) from August 15 to 20, 1982. The work consisted of drilling 93 overburden holes on BRICK 4 and 24 holes on the BRICK 2 claim.

The work was done by using helicopter setouts from a base camp at Emerald Lake. The helicopter was a Hughes 500D which was on contract from Canwest Aviation, Okotoks, Alberta. A Terr-Air Hughes 500D was used for 2 days when the Canwest machine was down for repairs.

1.2 Location, Access and Physiography

The BRICK claims are located in the Mayo Mining District (claim sheet 105 0/7, latitude 63°18'N and longitude 131°00'W) approximately 35 kilometers south of Emerald Lake and 50 kilometers west of MacMillan Pass. The location of the claims with respect to local topography is shown in Figure 1.

Access to the claim block is by helicopter from Emerald Lake which in turn can be serviced by float plane from Ross River or Whitehorse. Supplies can also be trucked along the North Canal Road or flown from Whitehorse or Ross River to MacMillan Pass. A tote road leads from the North Canal Road to the Plata airstrip passing approximately 10 kilometers southwest of the claim group; the present condition of this road is not known.

The relief in the area is moderate with rounded mountains covered by talus, felsenmeer and sparse vegetation. Most of the BRICK claim group lies just above the local treeline. Talus slopes are steep in part of the interest area.

2. WORK PROGRAM

2.1 Introduction

Reconnaissance and detailed soil sampling done on the BRICK claims during the 1982 field season outlined several zones of anomalous precious metal values. One hundred and seventeen overburden drill holes were completed in these zones to test the anomaly at the soil/rock interface (93 in BRICK 4 and 24 in BRICK 2). Samples were taken at depths of 1 to 1.5 meters and at 5 meter spacings using a small packsack drill and consisted of bedrock chips and/or soil. All samples were analysed for gold with 13 also being analysed for silver, arsenic and antimony.

2.2 Geochemistry

Three soil anomalies were drilled within the BRICK claims. ^{Directly three} One hundred and seventeen holes were located within the Saddle and Western Zones which are situated within the BRICK 4 claim. The remaining 24 holes were drilled in the Canol Zone which is located within the BRICK 2 claim.

The Saddle Zone centered near grid coordinates 1+00W, 3+75N consists of a zone containing two open-ended soil anomalies (coincident precious metals, arsenic and antimony) which trend northeast and northwest. The anomalous zones vary between 45 and 50 meters wide and have minimum strike lengths of 120 and 200 meters respectively.

Both anomalies are spatially related to altered quartz-feldspar porphyry sills, which locally carry thin quartz veinlets with stibnite and realgar. The northeast-trending zone is in an area covered predominantly by porphyry talus and this anomaly is partially caused by mineralized intrusive material which has been transported from upslope.

Fifteen of the sixty-five shallow overburden holes in the Saddle Zone were drilled across the northeast-trending anomaly (either side of the trench) and the remaining fifty were drilled in the northwest-trending anomaly (Figure 2).

Five of the overburden drill holes in the northeast anomaly contained anomalous gold values, with results from 115 to 440 ppb gold. Surface soil samples taken in this area were anomalous in gold and probably represent mineralized material in talus which has slumped off the knob to the west. The overburden samples were all taken below the talus and are probably more representative of the true direction of the anomalous zone (ie: northwest-trending) than the surface soil samples.

Thirty-five of the overburden drill holes in the northwest zone are anomalous in gold, with values ranging from 100 to 4020 ppb gold. The 13 samples analysed for silver, arsenic and antimony are from this zone and values range up to 14.5 ppm silver, 1300 ppm arsenic and 378 ppm antimony. These results are generally higher than surface soil samples in the same area. The best values are from samples of clay-altered porphyry and quartz vein material. There does not appear to be a well-defined pattern to the anomalous values and this may be a function of the way the gold occurs in the rocks or a function of the amount of drilling. Much more work is required in the Saddle Zone to define the extent of mineralized bedrock.

The Western Zone centered near 3+00W, 3+75N is a northwest-erly-trending area of anomalous gold, silver, arsenic and antimony values in soil and talus fines. The zone is still poorly defined but is at least 250 meters long and up to 100 meters wide. An altered quartz-feldspar porphyry sill appears to pass through the strongest part of the anomaly indicating that mineralization related to this sill may be the cause of the anomaly.

The 28 overburden holes drilled in the Western Zone were located up-slope from a 1000 ppb soil gold value and across part of the anomalous zone. The drilling is located around 3+00W and 3+60N (Figure 3). Eleven of the samples contain anomalous gold with values up to 1410 ppb. All of the samples consist of a yellow-brown mud derived from the weathering of altered intrusive rock and hornfelsed shale. The location of the anomalous samples seems erratic relative to the strike of the geological units, and

considerable additional work would be required to define anomalous bedrock. The altered porphyry sill is the most likely source of the soil anomalies.

The Canol Zone anomaly, located in the southern part of the grid is defined by elevated values of gold, silver, antimony and arsenic. The extent of the zone requires further definition, but it appears to be at least 1 kilometer long and up to 50 or 60 meters wide.

The 24 shallow holes drilled in the Canol Zone were positioned near the center of the zone in part of the strongest geochemical anomaly (near grid coordinates 1+35W and 0+50S), (Figure 4). Five holes carry anomalous gold values. These are located in the southwestern part of the area drilled and values range from 95 to 395 ppb gold. These samples are located approximately 5 to 10 meters north of anomalous soil samples within the Canol Zone anomaly and consist of sooty black soil with graphitic shale, silicified shale and microfractured shale fragments. It appears that the overburden drill holes are located on the upslope edge of the Canol Zone anomaly, and the downslope movement is less than expected. Additional drilling may be required to define the location of the anomaly at depth.

3. DISCUSSION

One hundred and seventeen overburden holes were drilled at 5 meter centers in 3 of the anomalous zones within the BRICK claims. In most cases the overburden values were higher than the surface samples, but were also much more variable due possibly to the erratic nature of the mineralization. The sampling was not sufficient to define the zones and more drilling at a wider interval (10 to 25 meters) would be required to define the width of the zones.

APPENDIX A

CLAIM NAMES AND GRANT NUMBERS

<u>Name</u>	<u>Tag Number</u>
BRICK 2	YA 62946
BRICK 4	YA 62948

APPENDIX B

ANALYTICAL METHODS

Soil samples are dried and sieved to minus 80 mesh. Rock chip samples are pulverized and a split of the minus 20 mesh fraction is analysed.

Silver analyses: the sample is dissolved in hot aqua regia and analysed by atomic absorption spectrophotometry. Silver analyses require a correction for background.

Arsenic analyses are by perchloric-nitric acid digestion and colorimetric determination.

Gold analyses are by fire assay techniques, but after preparation of the bead, the bead is dissolved in acid and the gold content determined by atomic absorption spectrophotometry.

Antimony analyses are by x-ray diffraction using a pressed pellet of pulverized rock.

DIAMOND DRILL LOGS

CLAIM NUMBER 105-0-7 YEAR 1982
AREA Emerald Lake Area
COMPANY AGIP Canada Ltd.
NUMBER OF HOLES 117 FOOTAGE 117 Metres to 175 Metres
CLAIM DRILLED Brick No: 2 & Brick No: 4
CORE STORAGE _____
NOTES & REMARKS:

Overburden Drilling

Expires : 3 July 1988

391455

OVERBURDEN SAMPLES

<u>Sample Number</u>	<u>Au</u>	<u>Ag</u>	<u>As</u>	<u>Sb</u>
0232000	220	14.5	1300	319
0232001	225	2.0	188	74
0232002	415	4.0	265	235
0232003	20	3.5	225	I.S.
0232004	100	3.3	298	183
0232005	230	4.0	150	127
0232006	340	2.9	54	86
0232007	170	1.9	85	67
0232008	<5	1.1	53	45
0232009	330	4.2	269	144
0232010	325	3.5	130	156
0232011	<10	3.5	344	378
0232012	110	3.5	340	240
0232013	565			
0232014	15			
0232015	185			
0232016	20			
0232017	40			
0232018	490			
0232019	35			
0232020	40			
0232021	25			
0232022	480			
0232023	800			
0232024	750			
0232025	135			
0232026	215			
0232027	160			
0232028	465			
0232029	910			
0232030	480			

OVERBURDEN SAMPLES

<u>Sample Number</u>	<u>Au</u>	<u>Ag</u>	<u>As</u>	<u>Sb</u>
0232031	515			
0232032	40			
0232033	120			
0232034	70			
0232035	705			
0232036	125			
0232037	135			
0232038	40			
0232039	420			
0232040	65			
0232041	375			
0232042	140			
0232043	20			
0232044	990			
0232045	235			
0232046	620			
0232047	4020			
0232048	65			
0232049	385			
0232050	440			
0232051	115			
0232052	15			
0232053	15			
0232054	90			
0232055	35			
0232056	20			
0232057	85			
0232058	45			
0232059	40			
0232060	290			
0232061	215			
0232062	305			
0232063	70			
0232064	50			

OVERBURDEN SAMPLES

<u>Sample Number</u>	<u>Au</u>	<u>Ag</u>	<u>As</u>	<u>Sb</u>
0232065	800			
0232066	30			
0232067	285			
0232068	410			
0232069	20			
0232070	105			
0232071	30			
0232072	10			
0232073	260			
0232074	1410			
0232075	255			
0232076	375			
0232077	60			
0232078	505			
0232079	225			
0232080	50			
0232081	30			
0232082	30			
0232083	<5			
0232084	25			
0232085	25			
0232086	80			
0232087	30			
0232088	15			
0232089	15			
0232090	30			
0232091	305			
0232092	10			
0232093	395			
0232094	310			
0232095	235			

OVERBURDEN SAMPLES

<u>Sample Number</u>	<u>Au</u>	<u>Ag</u>	<u>As</u>	<u>Sb</u>
0232096	45			
0232097	10			
0232098	95			
0232099	5			
0232100	240			
0232101	5			
0232102	<5			
0232103	5			
0232104	20			
0232105	10			
0232106	<5			
0232107	<5			
0232108	<5			
0232109	<5			
0232110	20			
0232111	10			
0232112	10			
0232113	5			
0232114	15			
0232115	10			
0232116	10			

SAMPLE DESCRIPTIONS AND DEPTHS

<u>Sample Number</u>	<u>Description</u>	<u>Depth</u>
0232000	-No Description	1 to 1.15 m.
0232001	-No Description	1 to 1.15 m.
0232002	-No Description	1 to 1.15 m.
0232003	-No Description	1 to 1.15 m.
0232004	-No Description	1 to 1.15 m.
0232005	-No Description	1 to 1.15 m.
0232006	-No Description	1 to 1.15 m.
0232007	-No Description	1 to 1.15 m.
0232008	-No Description	1 to 1.15 m.
0232009	-No Description	1 to 1.15 m.
0232010	-No Description	1 to 1.15 m.
0232011	-No Description	1 to 1.15 m.
0232012	-No Description	1 to 1.15 m.
0232013	-grey to black shale, minor qtz. fragments	1.3 to 1.45 m.
0232014	-black shale - 15-20% clay	1 to 1.15 m.
0232015	-grey-green porphyry fragments, 10% clay, 30% qtz.	1 to 1.5 m.
0232016	-black shale fragments, 60% clays	1 to 1.15 m.
0232017	-brown soil with porphyry fragments, 15-20% qtz. vein- lets	1 to 1.15 m.
0232018	-black shale fragments	1 to 1.15 m.
0232019	-porphyry fragments-brown soil	1 to 1.15 m.
0232020	-porphyry fragments - reddish brown soil	1 to 1.15 m.
0232021	-porphyry fragments in reddish brown soil	1 to 1.15 m.
0232022	-black shale fragments with minor clay	1 to 1.15 m.

SAMPLE DESCRIPTION AND DEPTHS

<u>Sample Number</u>	<u>Description</u>	<u>Depth</u>
0232023	-black shale fragments with minor clay	1 to 1.15 m.
0232024	-black shale fragments with minor brown porphyry fragments	1 to 1.15 m.
0232025	-grey brown soil with minor shale fragments	1 to 1.5 m.
0232026	-grey brown soil with minor shale fragments	1 to 1.5 m.
0232027	-red brown porphyry fragments with minor qrtz. fragments in brown soil	1 to 1.15 m.
0232028	-black shale fragments	1 to 1.15 m.
0232029	-black shale fragments in brown soil	1 to 1.15 m.
0232030	-black shale fragments in grey brown soil	1 to 1.15 m.
0232031	-black shale fragments	1 to 1.15 m.
0232032	-brown weathering porphyry with minor qrtz.	1 to 1.15 m.
0232033	-red brown weathering porphyry fragments	1 to 1.15 m.
0232034	-red brown weathering porphyry fragments	1 to 1.15 m.
0232035	-black shale and brown weather- ing soil	1 to 1.15 m.
0232036	-grey brown soil with minor shale fragments	1 to 1.15 m.
0232037	-black shale fragments with minor grey soil	1 to 1.15 m.

SAMPLE DESCRIPTION AND DEPTHS

<u>Sample Number</u>	<u>Description</u>	<u>Depth</u>
0232038	-red brown weathering porphyry fragments	1 to 1.15 m.
0232039	-black shale fragments with minor qrtz. vein material	1 to 1.15 m.
0232040	-black shale fragments	1 to 1.15 m.
0232041	-black shale fragments in brown soil	1 to 1.15 m.
0232042	-brown soil with minor porphyry fragments	1 to 1.15 m.
0232043	-red brown weathering porphyry fragments in brown soil	1 to 1.15 m.
0232044	-grey brown soil with minor porphyry fragments	1 to 1.15 m.
0232045	-grey brown soil with minor porphyry and shale fragments	1 to 1.15 m.
0232046	-grey brown soil with minor porphyry fragments	1 to 1.15 m.
0232047	-red brown porphyry with up to 30% qrtz. veinlets	1 to 1.15 m.
0232048	-black shale fragments in grey brown soil	1 to 1.15 m.
0232049	-grey brown soil with minor porphyry and shale fragments	1 to 1.15 m.
0232050	-grey brown soil with minor shale fragments	1 to 1.15 m.
0232051	-grey brown soil with minor shale fragments	1 to 1.15 m.
0232052	-grey brown soil with minor shale fragments	1.15 to 1.3 m.
0232053	-grey brown soil with minor shale fragments	1.40 to 1.55 m.
0232054	-black shale	1.15 to 1.30 m.

SAMPLE DESCRIPTION AND DEPTHS

<u>Sample Number</u>	<u>Description</u>	<u>Depth</u>
0232055	-black shale	1.15 to 1.30 m.
0232056	-grey black shale	1 to 1.15 m.
0232057	-grey black shale	1 to 1.15 m.
0232058	-grey black shale fragments in grey brown soil	1 to 1.15 m.
0232059	-black shale fragments	1 to 1.15 m.
0232060	-grey brown soil with porphyry fragments	1 to 1.15 m.
0232061	-grey brown soil with porphyry fragments	1 to 1.15 m.
0232062	-clay and clay altered porphyry fragments	1 to 1.15 m.
0232063	-clay and clay altered porphyry fragments with minor qrtz. and shale fragments	1 to 1.15 m.
0232064	-brown dirt with minor qrtz. and porphyry fragments	1 to 1.15 m.
0232065	-light brown soil with shale and intrusive fragments	1 to 1.15 m.
0232066	-light brown soil with shale fragments	1 to 1.15 m.
0232067	-light brown soil with shale fragments	1 to 1.15 m.
0232068	-light brown soil with shale fragments	1 to 1.15 m.
0232069	-light brown soil with shale fragments	1 to 1.15 m.
0232070	-light brown soil with horn- felsed shale fragments	1 to 1.15 m.
0232071	-red brown soil with minor shale fragments	1 to 1.15 m.
0232072	-yellow soil with hornfelsed shale fragments	1 to 1.15 m.

SAMPLE DESCRIPTION AND DEPTHS

<u>Sample Number</u>	<u>Description</u>	<u>Depth</u>
0232073	-yellow soil with hornfelses shale fragments	1 to 1.15 m.
0232074	-yellow-brown soil with grey black shale fragments	1 to 1.15 m.
0232075	-yellow soil with hornfelses shale fragments	1 to 1.15 m.
0232076	-yellow soil with hornfelses shale fragments	1 to 1.15 m.
0232077	-yellow soil with hornfelses shale fragments	1 to 1.15 m.
0232078	-yellow soil with hornfelses shale fragments	1 to 1.15 m.
0232079	-yellow soil with shale fragments	1 to 1.15 m.
0232080	-yellow soil with shale fragments	1 to 1.15 m.
0232081	-yellow soil with shale fragments	1 to 1.15 m.
0232082	-red brown soil with shale fragments	1 to 1.15 m.
0232083	-red brown soil with horn- felses shale fragments	1 to 1.15 m.
0232084	-yellow white soil with hornfelses shale fragments	1 to 1.15 m.
0232085	-yellow brown soil with hornfelses shale fragments	1 to 1.15 m.
0232086	-yellow brown soil with hornfelses shale fragments	1 to 1.15 m.
0232087	-yellow brown soil with hornfelses shale fragments	1 to 1.15 m.
0232088	-red brown soil with black shale fragments	1 to 1.15 m.

SAMPLE DESCRIPTION AND DEPTHS

<u>Sample Number</u>	<u>Description</u>	<u>Depth</u>
0232089	-yellow brown soil with grey hornfelsed shale fragments	1 to 1.15 m.
0232090	-yellow brown soil with grey hornfelsed shale fragments	1 to 1.15 m.
0232091	-yellow brown soil with silicified porphyry fragments	1 to 1.15 m.
0232092	-brown soil with shale fragments	1 to 1.15 m.
0232093	-black soil with shale fragments with minor Fe oxide	1 to 1.15 m.
0232094	-pitch black soil with minor shale fragments with extensive microfracturing	1 to 1.15 m.
0232095	-pitch black soil with minor cherty shale fragments and minor Fe oxide	1 to 1.15 m.
0232096	-pitch black soil with minor cherty shale fragments and minor Fe oxide	1 to 1.15 m.
0232097	-pitch black soil with minor cherty shale fragments and minor Fe oxide	1 to 1.15 m.
0232098	-black soil with cherty mudstone fragments	1 to 1.15 m.
0232099	-black soil with shale and graphitic shale fragments	1 to 1.15 m.
0232100	-black soil with shale and graphitic shale fragments	1 to 1.15 m.
0232101	-black soil with cherty shale fragments	1 to 1.15 m.
0232102	-black soil with cherty shale fragments with minor qrtz. veins	1 to 1.15 m.

SAMPLE DESCRIPTION AND DEPTHS

<u>Sample Number</u>	<u>Description</u>	<u>Depth</u>
0232103	-black soil with cherty shale fragments with minor qrtz. veins	1 to 1.15 m.
0232104	-black soil with black shale fragments	1 to 1.15 m.
0232105	-black soil with black shale fragments	1 to 1.15 m.
0232106	-black soil with black graphitic shale fragments	1 to 1.15 m.
0232107	-black soil with black shale fragments	1 to 1.15 m.
0232108	-black soil with black graphitic shale fragments	1 to 1.15 m.
0232109	-black soil with black graphitic shale fragments	1 to 1.15 m.
0232110	-black soil with black graphitic shale fragments with minor Fe oxide	1 to 1.15 m.
0232111	-black soil with black graphitic shale fragments with minor Fe oxide	1 to 1.15 m.
0232112	-black soil with black graphitic shale fragments with minor Fe oxide	1 to 1.15 m.
0232112	-black soil with black graphitic shale fragments with minor Fe oxide	1 to 1.15 m.
0232114	-black soil with black graphitic shale fragments with minor Fe oxide	1 to 1.15 m.

SAMPLE DESCRIPTION AND DEPTHS

<u>Sample Number</u>	<u>Description</u>	<u>Depth</u>
0232115	-black soil with black graphitic shale fragments with minor Fe oxide	1 to 1.15 m.
0232116	-black soil with black graphitic shale fragments with minor Fe oxide	1 to 1.15 m.

APPENDIX C

STATEMENT OF COSTS

1. Analytical Costs

Analyses by Bondar-Clegg and Co. Ltd., Vancouver.

BRICK 4

13 "soil" samples @ \$15.85	\$ 206.05
57 "soil" samples @ \$6.70	381.90
23 rock samples @ \$8.75	<u>201.25</u>
	\$ 789.20

Total analytical costs for overburden drill holes in the BRICK 4 claims = \$789.20.

BRICK 2

24 "soil" samples @ \$6.70	\$ 160.80
----------------------------	-----------

Total analytical costs for overburden drill holes in the BRICK 2 claims = \$160.80.

2. Helicopter Costs

BRICK 4

August 15, 16, 19: Hughes 500D on contract from Canwest Aviation, Okotoks, Alberta

3.3 hours @ \$450.00 per hour	\$ 1,485.00
plus fuel at 25 gallons/hour @ 2.77/hour	<u>228.53</u>

Total helicopter costs - BRICK 4	\$ 1,713.53
----------------------------------	-------------

BRICK 2

August 20 - Hughes 500D on contract from Canwest Aviation, Okotoks, Alberta

1.3 hours @ \$450.00 per hour	\$ 585.00
plus fuel at 25 gallons/hour @ 2.77/hour	<u>90.02</u>

Total helicopter costs - BRICK 2	\$ 675.02
----------------------------------	-----------

3. Labour Costs

BRICK 4

Contract: August 15, 16, 19: A 2 man crew and overburden drill equipment on contract from Bema Industries, Langley, B.C.
@ \$500.00/day \$ 1,500.00

AGIP Personnel

R. Robertson, Senior Geologist, 1/2 day @ \$170/day	\$ 85.00
T. Garagan, Project Geologist, 1 day @ \$110/day	110.00
S. Seto, Senior Assistant, 1 day @ \$87/day	87.00
K. Dieckmann, Intermediate Assistant, 2 days @ \$75/day	<u>150.00</u>
TOTAL	\$ 432.00

Total labour costs for BRICK 4	\$ 1,932.00
--------------------------------	-------------

BRICK 2

Contract: August 20: two man crew and overburden drill equipment on contract from Bema Industries, Langley, B.C.
@ \$500.00/day \$ 500.00

AGIP Personnel

T. Garagan, Project Geologist, 1/2 day @ \$110/day	\$ 55.00
L. Lalonde, Senior Assistant, 1 day @ \$87/day	<u>87.00</u>
TOTAL	\$ 142.00

Total labour costs for BRICK 2	\$ 642.00
--------------------------------	-----------

4. Food Costs

BRICK 4

Estimated at \$20.00/manday for 10.5 days \$ 210.00

BRICK 2

Estimated at \$20.00/manday for 3.5 days \$ 70.00

Total costs of physical work for assessment purposes
on BRICK 4 = \$4,644.73

Total costs of physical work for assessment purposes
on BRICK 2 = \$1,547.82

APPENDIX D

STATEMENT OF QUALIFICATIONS

I, THOMAS GARAGAN, of the City of Calgary, in the Province of Alberta, hereby certify:

That I am a geologist employed by AGIP Canada Ltd. and that I caused to be performed the work described in this report.

That I obtained a Bachelor of Science degree with Honours in Geology from the University of Ottawa, Ontario in 1980.

That I have been engaged in mineral exploration and geological survey mapping on a full and part-time basis for six years of which three have been on mineral exploration programs in the Yukon Territory.

That I am an associate member of the Geological Association of Canada and the Mineralogical Association of Canada.

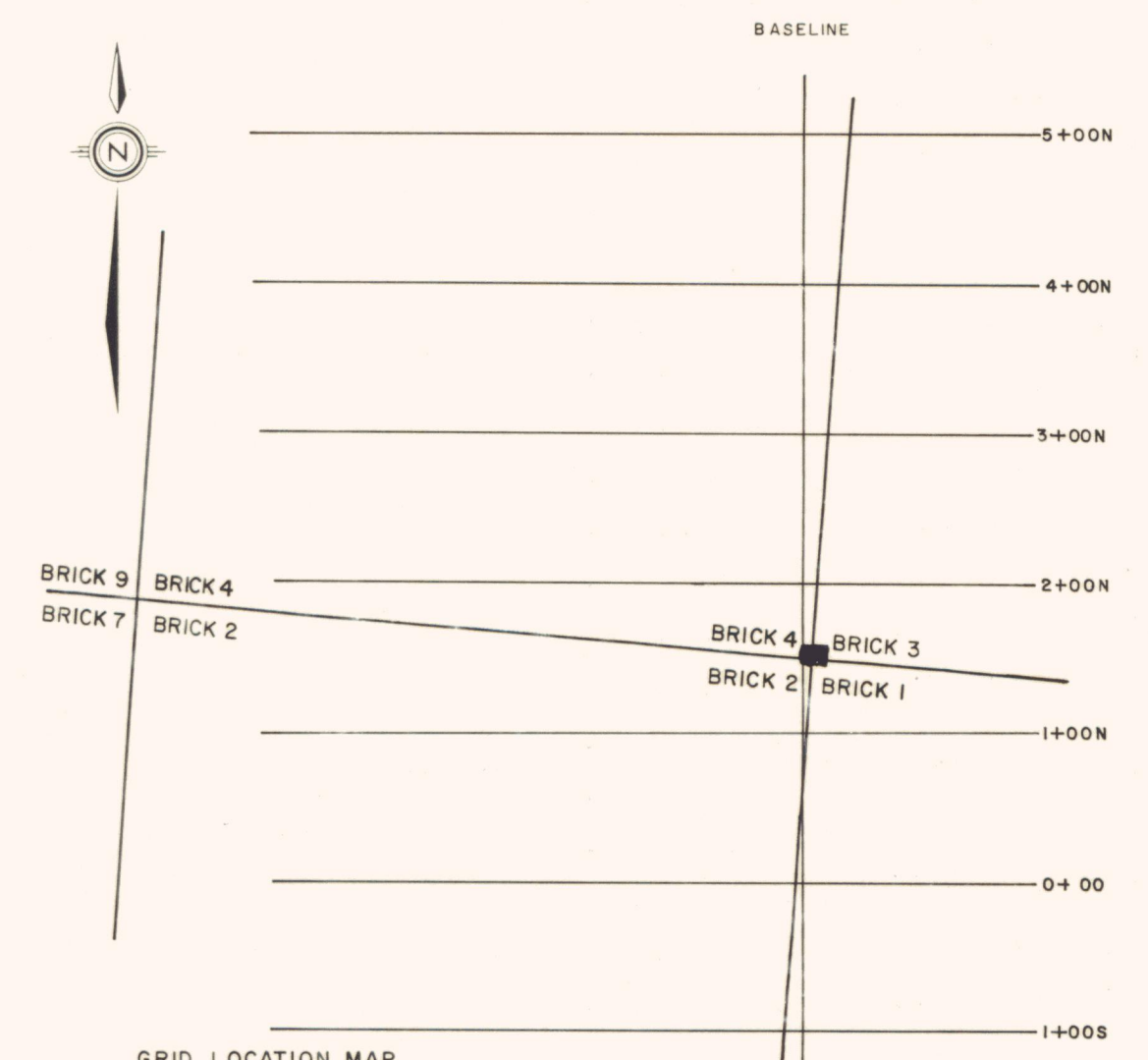
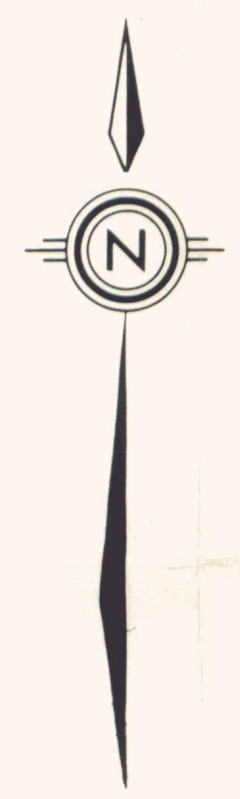
Signed at Calgary, Alberta this 9th day of May, A.D, 1983.



THOMAS GARAGAN

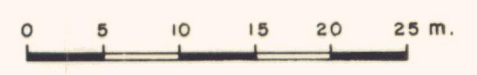
LEGEND

- CRETACEOUS
 2 Clay Altered Quartz-Feldspar Porphyry
- DEVONIAN
 1 Hornfelsed Shale
- SYMBOLS
 - - - - - Geological contact (approximate, assumed)
 ○ Outcrop
 ○ Overburden Drill Hole
 ○ 0232000 - Sample Number



GRID LOCATION MAP
 0 50 100 150
 METRES

CLAIM POST LOCATION IS APPROXIMATE
 AS IT HAS NOT BEEN SURVEYED YET



SADDLE ZONE OVERBURDEN DRILL HOLES	PROJECT: 400321
	APPROVED: R.R.
	NTS:
BRICK/NEVE	DATE: OCT, 1982
	DRAWN BY: G.T.Sz.
	SCALE: 1:500
YUKON	FILE:
	FIGURE: 2
AGIP CANADA LTD.	

LEGEND

CRETACEOUS

- 2b Porphyritic Biotite Monzonite
- 2a Clay Altered Quartz Feldspar Porphyry

DEVONIAN

- I Hornfelsed Blue Shale

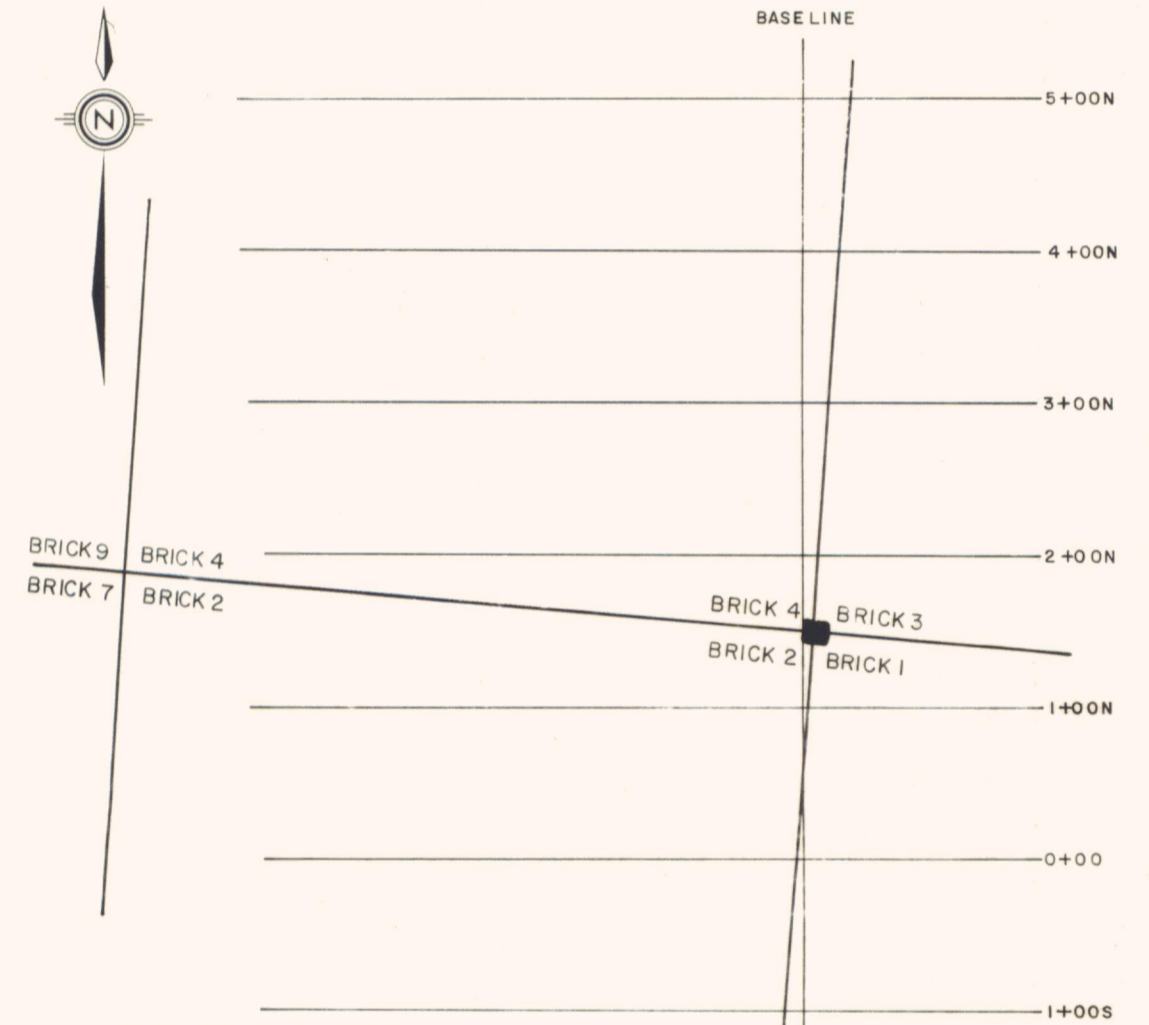
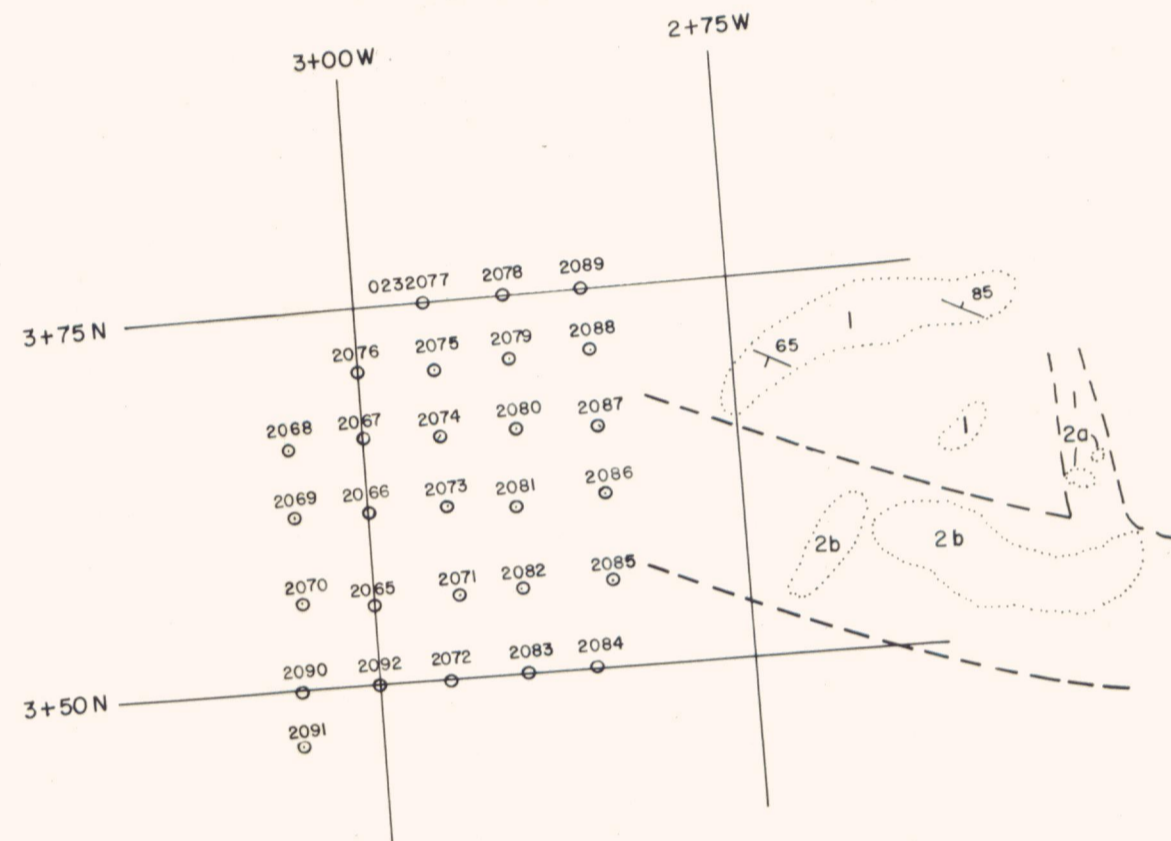
SYMBOLS

- Geological contact (approximate)
- Outcrop
- ↘ Strike and dip of bedding

Overburden Drill Hole (all samples taken at depth of 1 meter)

○ 0232077 - Sample Number

(All Au analyses are by Fire Assay with Atomic Absorption finish)



GRID LOCATION MAP
0 50 100 150
METRES

CLAIM POST LOCATION IS APPROXIMATE
AS IT HAS NOT BEEN SURVEYED YET



WESTERN ZONE OVERBURDEN DRILL HOLES	PROJECT: 400321
	APPROVED: R. R.
091455	NTS:
	DATE: OCT., 1982
	DRAWN BY: G.T.Sz.
YUKON	1:500
	FILE:
AGIP CANADA LTD.	FIGURE: 3



LEGEND

CRETACEOUS

2 Clay Altered Quartz - Feldspar Porphyry

DEVONIAN

1 Blue Weathering Graphitic Shale, Shale 1a, Microfractured Blue Shale

SYMBOLS

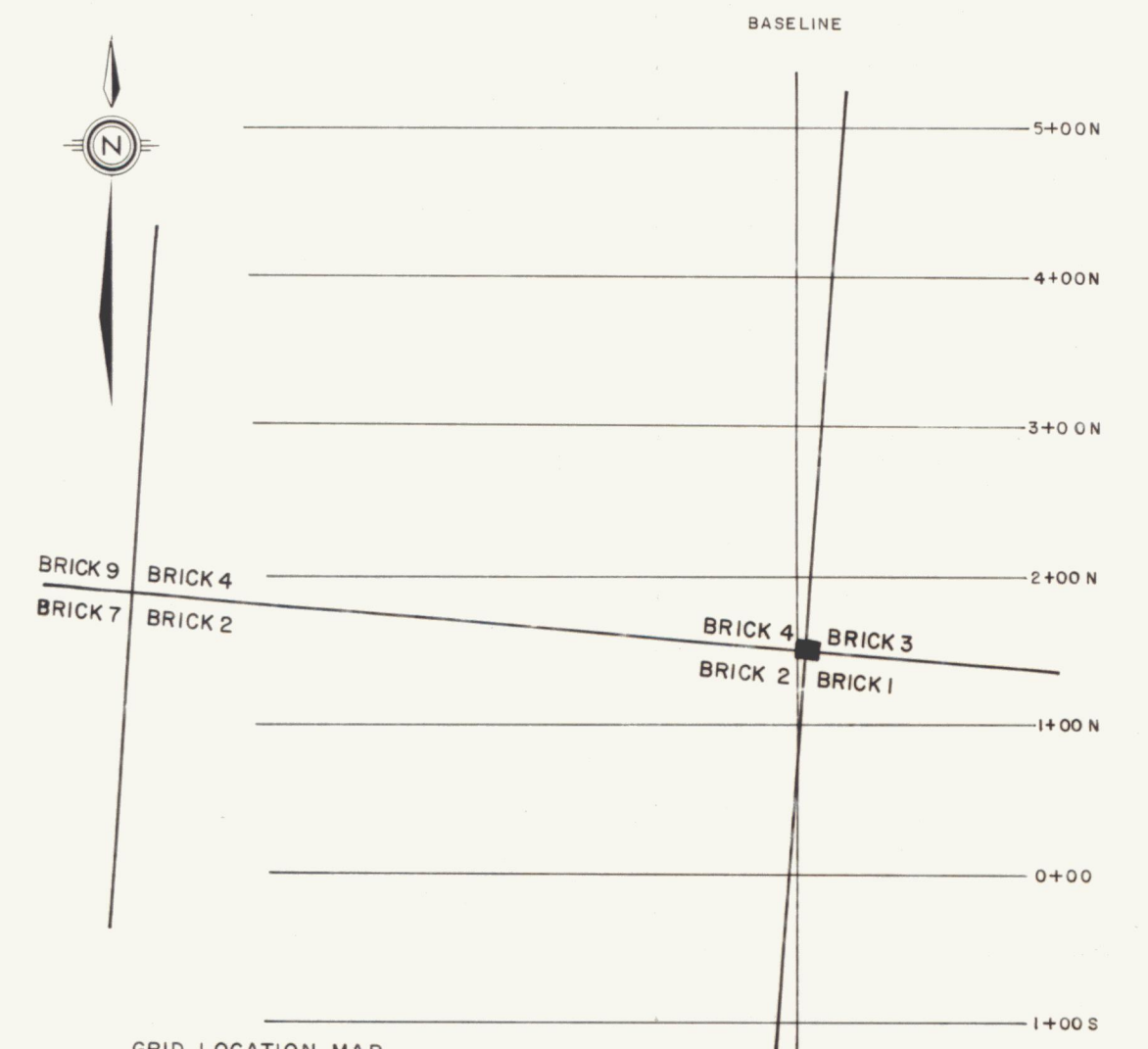
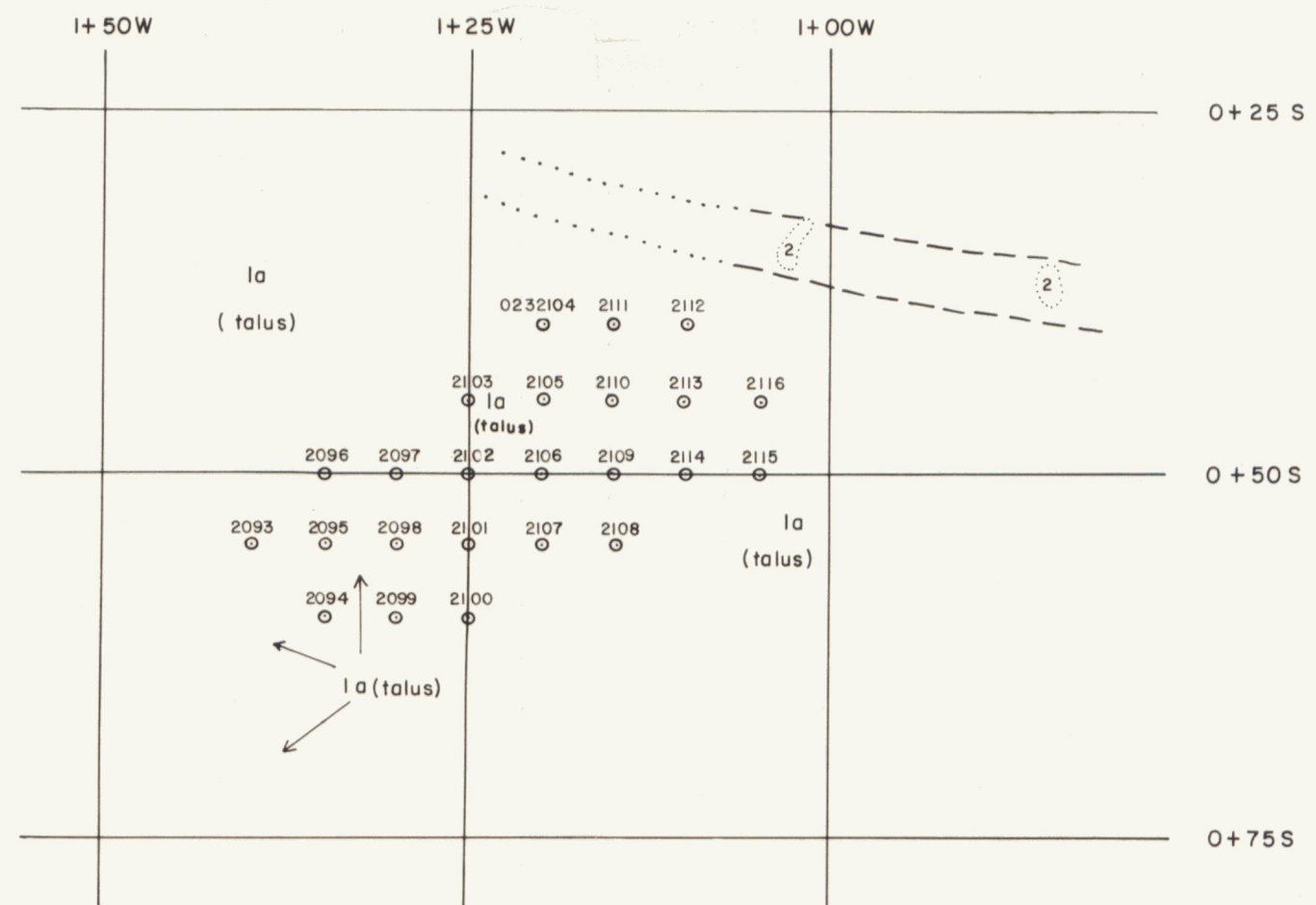
--- Geological contact (approximate, assumed)

○ Outcrop

Strike and dip of bedding

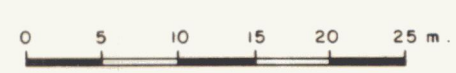
Overburden Drill Hole (all sample are taken at a depth of 1 meter)

○ 0232104 - Sample Number.



GRID LOCATION MAP
0 50 100 150
METRES

CLAIM POST LOCATION IS APPROXIMATE
AS IT HAS NOT BEEN SURVEYED YET



CANOL ZONE OVERBURDEN DRILL HOLES	PROJECT: 400321
	APPROVED: R.R.
BRICK/ NEVE	DATE: OCT., 1982
	DRAWN BY: G.T. Sz.
	1:500
YUKON	FILE:
AGIP CANADA LTD.	FIGURE: 4