

ARCHER, CATHRO

& ASSOCIATES (1981) LIMITED

CONSULTING GEOLOGICAL ENGINEERS

1016-510 WEST HASTINGS STREET
VANCOUVER, B.C. V6B 1L8



(604) 688-2568

REPORT ON
GEOLOGICAL AND GEOCHEMICAL SURVEY
CONDUCTED JUNE 20 - JULY 30, 1982



FOR
QUARTZ LAKE PROJECT

AUP 1-24 CLAIMS
(YA67537-YA67560)

WATSON LAKE MINING DISTRICT

YUKON TERRITORY

CLAIM SHEET 105A/8

LATITUDE 60°27'N; LONGITUDE 128°02'W

DECEMBER, 1982

A.R. Archer, B.A.Sc., P.Eng.

091424

This report for the year ended by
the Geological Survey of Canada
Senior Section, Yukon Quartz
Mining Ad. Co. represents
represent to the amount
of \$ 3,400 -

P. Wilson

Regional Director, Yukon and
Geological Survey of Canada
of Yukon Territory, Commissioner

TABLE OF CONTENTS

	<u>PAGE</u>
Introduction	1
Property, Location and Access	1
Geology	2
Geochemistry	3
Results and Recommendations	4

APPENDICES

Appendix I - Personnel

Appendix II - Analytical Techniques

LIST OF ILLUSTRATIONS

<u>No.</u>	<u>Description</u>	<u>Following Page</u>	<u>In Pocket</u>
1	Aup Claims - Location Map	1	
2	- Geology and Gold Geochemistry		A
3	- Bismuth and Arsenic Geochemistry ...		B
4	- Copper, Lead and Silver Geochemistry		C

INTRODUCTION

The Aup 1-24 claims were staked in December, 1981 by Quartz Lake Project (Kidd Creek Mines Ltd.) to cover anomalous geochemical values obtained from previous work in the area. Work in 1982 consisted of mapping and collection of 247 soil and stream sediment samples, as illustrated on Figures 2, 3 and 4 in pocket.

PROPERTY, LOCATION AND ACCESS

The property consists of 24 Aup claims in a contiguous block 6 claims long and 4 claims wide. The claims are recorded in the Watson Lake Mining District as follows:

<u>Claim Name</u>	<u>No.</u>	<u>Mining District</u>	<u>Claim Sheet</u>	<u>Grant Numbers</u>	<u>Expiry Date</u>
Aup 1-24	24	Watson Lake	105A/8	YA67537-YA67560	14 Dec/82

The property is located 55 km northeast of Watson Lake on claim sheet 105A/8 at latitude 60°27'N and longitude 128°02'W, as illustrated on Figure 1 on the following page. Access in 1982 was by helicopter from the QLP basecamp at Roy Lake 15 km to the northeast.

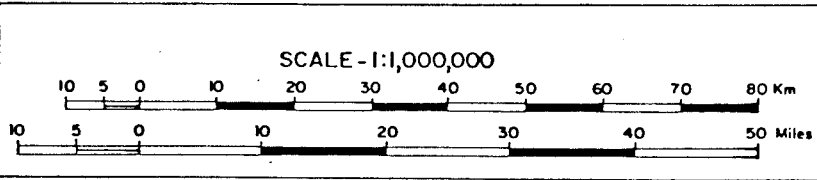
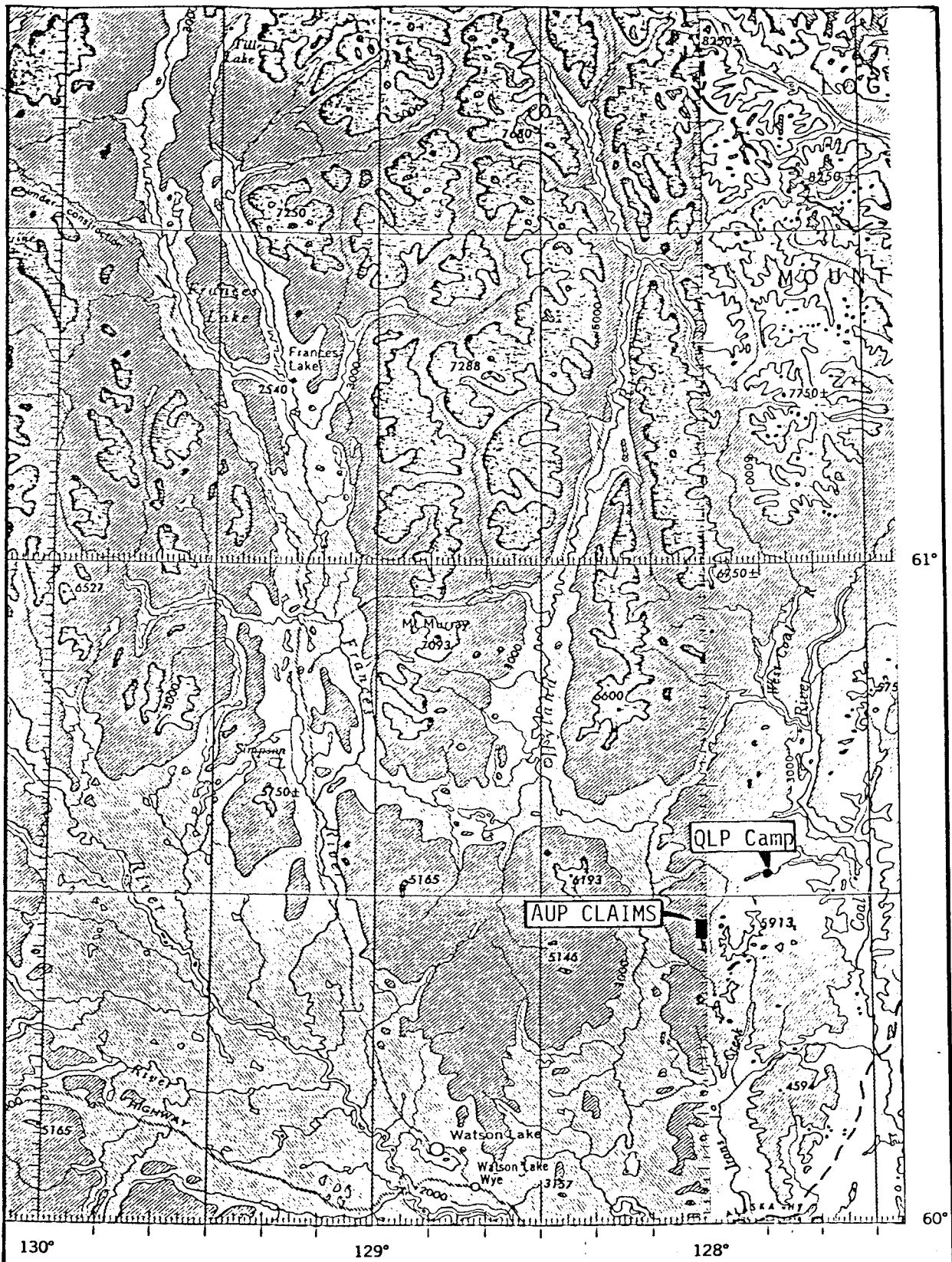


Figure 1
 Location map - AUP
 Claims
 Quartz Lake Project

GEOLOGY

The claims straddle a north-trending, rounded ridge which slopes down to swampy drainages. Elevations range from 1065 m (3500') in the valleys to 1615 m (5300') at the highest point of the ridge. Much of the claims lie above treeline at approximately the 1400 m (4600') elevation level. Below 1400 m (4600') vegetation consists of dense sub-alpine spruce and fir becoming more open spruce and poplar forests at higher elevations. A moderately-thick ground cover of willow and arctic birch (buckbrush) is present in and immediately above the valleys. The area was ice sheet glaciated during the Pleistocene and a thin cover of glacial till is common both in valleys and on ridge tops. There is little evidence of glacial scouring at highest elevations, where blocky felsenmeer obscures bedrock exposures.

The property sits within a north-trending belt of Hadrynian sedimentary rocks regionally known as the Grit Unit. At property scale, the Grit Unit has been subdivided into five lithologies, as illustrated on Figure 2 in pocket. Accurate determination of stratigraphic divisions and relations are not possible at the current stage of work. The coarsest member of the Grit Unit on the property includes grey to green quartz and feldspar grit to pebble conglomerate. Locally a strong shear fabric is developed in the coarse-grained rocks and pebbles are flattened. The coarse rocks grade into better sorted, fine-grained sandstone and quartzite with a non-calcareous cement. These in turn grade into interbedded phyllitic siltstone and sandstone. Where phyllite is dominant, it has been mapped as a separate unit described as black, grey and green non-calcareous phyllite. The fifth lithology on the Aup claims is a black, silty to sandy, platy weathering limestone crosscut by quartz-calcite veins which host small grains of enargite, tetrahedrite and pale tan sphalerite. The veined limestones give off a strong sulfurous smell when broken.

These limestones are similar to Cambro-Ordovician silty limestones which host tetrahedrite-bearing veins on the Green claims 18 km to the northwest. A specimen containing about 50 percent tetrahedrite from the Green claims assayed 225 oz/ton silver and 17 percent copper. Tetrahedrite from the Aup claim was not assayed by QLP as specimens collected by Archer, Cathro in 1973 to 1975 returned only low gold and silver values.

GEOCHEMISTRY

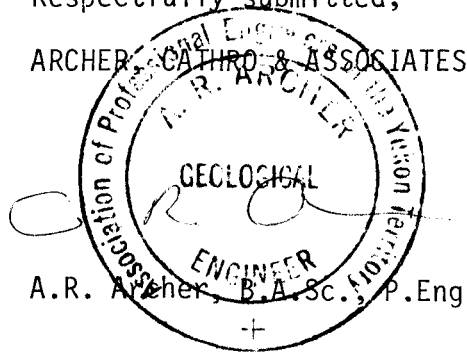
The 1982 sampling program by QLP consisted of 19 silt and 228 soil samples, as shown on Figures 2, 3 and 4 in pocket. Silts were collected at approximately 20 m intervals. Soils were taken at 50 m intervals on lines spaced 300 m apart at right angles from a picketed baseline surveyed by chain and compass. Soil sample sites were marked by one-half metre pickets with the sample bag number written on one side and the grid location on the other side. Soils were obtained from a poorly developed B+C horizon by digging through light tundra vegetation using a heavy mattock. Samples were collected in waterproof kraft envelopes and shipped to Chemex Labs Ltd., North Vancouver, B.C. for gold analysis using a neutron activation finish on a minus 35 mesh fraction. Sample splits were analysed for six additional elements (arsenic, bismuth, tungsten, lead, copper and silver) using ICP-AES after return from the field. (See Appendix III for details of analytical techniques.)

RESULTS AND RECOMMENDATIONS

Gold response on the Aup claims, plotted on Figure 2 in pocket, ranges from less than one to 28 ppb in soils and below 4 ppb in silts. Arsenic values range up to 2430 ppm with a substantial number of values greater than 100 ppm. A value of 1200 ppm is coincident with the highest gold value. Bismuth values are generally below detection limits of 2 ppm but range up to 10 ppm, with higher values coincident with anomalous arsenic values. Copper, lead and silver values range from 4 to 1060 ppm, less than 3 to 317 ppm, and less than 1.0 to 19.0 ppm, respectively, with most values in the range of 20 to 30, 10 to 20 and 1.0 ppm. Tungsten values are all below the detection limit of 10 ppm and are therefore not plotted. High values in the base metals and silver have spotty distribution and are probably related to outcrop and float of mineralized veinlets in the limestone unit, as discussed earlier. No bulk tonnage precious-metal target is indicated and no further work is recommended.

Respectfully submitted,

ARCHER, CATHRO & ASSOCIATES (1981) LIMITED



A.R. Archer, B.A.Sc., P.Eng.

/mc

APPENDIX I - PERSONNEL

APPENDIX I
PERSONNEL - AUP CLAIMS, 1982

<u>Name</u>	<u>Address</u>	<u>Position</u>
J. Carne	6392 Neville Street, Burnaby, B.C.	Geologist
K. Opsetmoen	1516 Martin Street, Port Coquitlam, B.C.	Student Assistant
D. Billard	1214 Main Street, Saskatoon, Sask.	Geologist
C. Greig	4665 West 16th Avenue, Vancouver, B.C.	Student Assistant
B. McDaniel	4665 West 16th Avenue, Vancouver, B.C.	Student Assistant

APPENDIX II - ANALYTICAL TECHNIQUES

GEOCHEMICAL PREPARATION
AND
ANALYTICAL PROCEDURES

- 1.** Geochemical samples (soils, silts) are dried at 80°C for a period of 12 to 24 hours. The dried sample is sieved to -80 mesh fraction through a nylon and stainless steel sieve. Rock geochemical materials are crushed, dried and pulverized to -100 mesh.
 2. A 1.00 gram portion of the sample is weighed into a calibrated test tube. The sample is digested using hot 70% HClO₄ and concentrated HNO₃. Digestion time = 2 hours.
 3. Sample volume is adjusted to 25 mls. using demineralized water. Sample solutions are homogenized and allowed to settle before being analyzed by atomic absorption procedures.
 4. Detection limits using Techtron A.A.5 atomic absorption unit.

Copper	- 1 ppm
Molybdenum	- 1 ppm
Zinc	- 1 ppm
* Silver	- 0.2 ppm
* Lead	- 1 ppm
* Nickel	- 1 ppm
* Chromium	- 5 ppm
* Cobalt	- 1 ppm
Manganese	- 5 ppm
Iron	- 2 ppm
Cadmium	- 0.1 ppm

* Ag, Pb, Co & Ni are corrected for background absorption.
 5. Elements present in concentrations below the detection limits are reported as one half the detection limit, i.e. Ag - 0.1 ppm.
- ** 1982 Quartz Lake Project samples were dried, sieved through an ASTM 35 mesh screen (0.50) and the minus 35 mesh fraction was pulverized and homogenized in a ring grinder to approx, -100 mesh.

PPM ANTIMONY

A 2.0 gm sample digested with conc. HCl in hot water bath. The iron is reduced to Fe +2 state and the Sb complexed with I-. The complex is extracted with TOPO-MIBK and analyzed via A.A. Correcting for background absorption 0.2 ppm +/- 0.2

Detection limit - 0.2 PPM.

PPM ARSENIC

A 1.0 gram sample is digested with a mixture of perchloric and nitric acid to strong fumes of perchloric acid. The digested solution is diluted to volume and mixed. An aliquot of the digested is acidified, reduced with KI and mixed. A portion of the reduced solution is converted to arsine with NaBH₄ and the arsenic content determined using flameless atomic absorption.

Detection limit - 1 PPM

PPM BISMUTH

A 2.0 gram sample is digested with Conc. HCl and potassium chlorate. The solution cooled. After the addition of KI and the reduction of iron, the solution is extracted with MIBK-aliquot 336 and analyzed via standard AA procedure correcting for background absorption.

Detection limit - 0.2 PPM

PPM TELLURIUM

A 5.0 gram sample digested with aqua-regia to dryness. The residue taken up in 25% HCl and the solution adjusted with HBr to 3M Br-. After the reduction of iron with ascorbic acid the tellurium bromide complex is extracted into MIBK, washed and analyzed via AA correcting for background absorption.

Detection limit - 0.1 PPM

GEOCHEMICAL PROCEDURES FOR GOLD AND RELATED ELEMENTS

PPB GOLD: Chemical extraction - Atomic absorption analysis

A 5 gm sample ashed @800 deg. C for one hour, digested with aqua regia to dryness - taken up in 25% HCl-, the gold then extracted as the bromide complex into MIBK and analyzed via A.A.

Detection limit - 10 PPB.

GOLD FA-AA COMBO METHOD:

For low grade samples and geochemical materials 10 gram samples are fused with the addition of 10 mg of Au-free Ag metal and cupelled. The silver bead is parted with dilute HNO3 and then treated with aqua regia. The salts are dissolved in dilute HCl and analyzed for Au on an atomic absorption spectrophotometer. -

Detection Limit - 5 ppb.

GOLD NAA - NEUTRON ACTIVATION ANALYSES**

A 10 gm sample is fused in litharge, carbonate and silicious flux. The resulting lead button containing any gold in the sample is cupelled in a muffle furnace to produce a precious metals bead.

Sample beads, plus standard and blank beads are irradiated in a thermal neutron flux. The gamma emissions of the irradiated beads are counted utilizing a Ge (Li) detector and quantified for gold.

The detection limit for a 10 gm sample is 1 µg/kg (ppb).

PPM SILVER

A 1.0 gm portion of sample is digested in conc. perchloric-nitric acid (HClO4-HNO3) for approx. 2 hours. The digested sample is cooled and made up to 25 mls with distilled water. The solution is mixed and solids are allowed to settle. Silver is determined by atomic absorption technique using background correction on analysis.

Detection limit - 0.1 PPM.

** Technique used for all Quartz Lake Project analyses, 1982 and pre 1982.

GEOCHEMICAL PREPARATION AND ANALYTICAL PROCEDURES ICP-AES

Geochemical samples (soils, silts) are dried at 80° C for a period of 12 to 24 hours. The dried sample is sieved to -80 mesh fraction through a nylon and stainless steel sieve. Rock geochemical materials are crushed, dried and pulverized to -100 mesh. A 0.50 gram portion of the sample is weighed into a calibrated test tube. The sample is digested using hot 70% perchloric acid and concentrated nitric acid. Digestion time is 2 hours. Sample volume is adjusted to 25 mls. using demineralized water. Sample solutions are homogenized and allowed to settle before being analyzed by atomic absorption procedures. Detection limits using Yvon-Jobin 48P Inductively Coupled Plasma Atomic Emission Spectrometer.

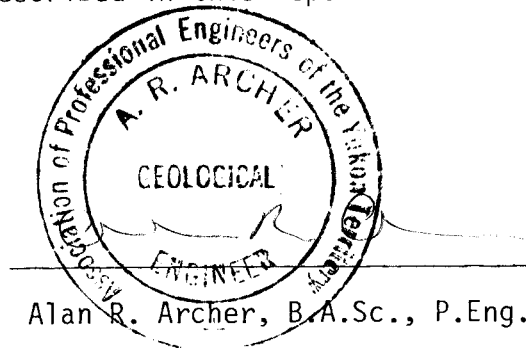
<u>Element</u>	<u>Detection</u>	<u>Element</u>	<u>Detection</u>
Arsenic	10 µg/g	Molybdenum	1 µg/g
Bismuth	2 µg/g	Nickel	1 µg/g
Cadmium	0.5 µg/g	Phosphorus	10 µg/g
Cobalt	1 µg/g	Silver	1 µg/g
Copper	1 µg/g	Tungsten	10 µg/g
Iron	0.001%	Uranium	10 µg/g
Lead	1 µg/g	Vanadium	1 µg/g
Manganese	1 µg/g	Zinc	1 µg/g

Elements which exceed the upper limit for geochemical analyses should be assayed quantitatively.

STATEMENT OF QUALIFICATIONS

I, Alan R. Archer, with business addresses in Whitehorse, Yukon Territory and Vancouver, British Columbia, and residential address in Burnaby, British Columbia, do hereby declare:

1. I am a 1957 graduate of the University of British Columbia in geological engineering.
2. I have been engaged in geological engineering for over twenty years, the past fifteen of which have been as a consultant.
3. I am a registered professional engineer in British Columbia and in Yukon Territory.
4. I have supervised the work described in this report.



Alan R. Archer, B.A.Sc., P.Eng.

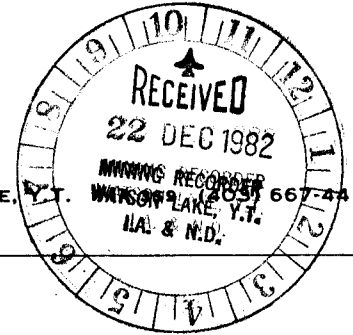
ARCHER, CATHRO

& ASSOCIATES LIMITED

CONSULTING GEOLOGICAL ENGINEERS

VANCOUVER, B.C. (604) 688-2568

Box 4127, WHITEHORSE, Y.T. 667-4415



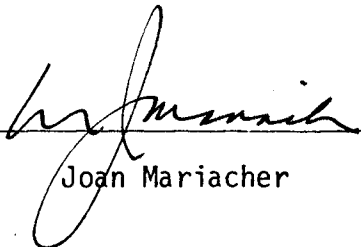
1016 - 510 WEST HASTINGS STREET
VANCOUVER, B.C. V6B 1L8

091424

AFFIDAVIT

I, Joan Mariacher, of Vancouver, B.C. make oath and say:

That to the best of my knowledge the attached Statement of Expenditures for exploration work on the Aug 1 - 24 mineral claims on Claim Sheet 105A/8 is accurate.


Joan Mariacher

Sworn before me at Vancouver, B.C.

this 7th day of

December, 1982



Notary, Yukon Territory

Statement of Expenditures
Soil Sampling Survey
Aup 1-24 Claims
December 15, 1982

Management

Archer, Cathro & Associates (1981) Limited \$ 500.00

Labour

J. Carne (geologist) - 1/3 day June 26 at \$225/day	\$ 75.00	
D. Billard - 2 1/2 days June 20 to July 30 at \$116/day	290.00	
K. Opsetmoen - 2 days at \$87/day	174.00	
C. Greig - July 29 at \$99/day	99.00	
B. McDaniel - July 29-30 - 2 days at \$84/day	<u>168.00</u>	806.00

Expenses

Field room and board, 8 mandays at \$45/day	360.00	
Helicopter rental, Trans North Air Bell 47 - total 4 hours June 20 to July 31 at \$264/hr	1,056.00	
Helicopter fuel, 4 hours at 18 gal/hr at \$4/gal delivered to site	288.00	
Chemex Labs, geochem analyses -		
(a) 235 samples for Au (NAA)	1,410.00	
(b) 235 samples for 6 element ICP analysis	<u>1,034.00</u>	<u>4,148.00</u>
Total		<u>\$5,454.00</u>

In Account With

QUARTZ LAKE PROJECT

Project -

Date --

JUNE 30, 1982

		Total
MANAGEMENT		
JUNE		2250.00
LABOUR		
Supervisory		
Field	✓ J. CARNEY - JUNE 1-30 @ \$3000/mo. ✓ D. WILLARD - JUNE 1-30 @ \$1950/mo ✓ C. GARZIG - JUNE 1-30 @ \$1650/mo ✓ R. OPSI/MORN - JUNE 1-30 @ \$1450/mo ✓ B. M. DANIEL - JUNE 1-30 @ \$1400/mo ✓ K. CARSWELL - JUNE 3-30 @ \$50/day	3000.00 1950.00 1650.00 1450.00 1400.00 1400.00 10,850.00
Casual	C. MAIN - 11 days @ \$265 - FROM 8Y <div style="text-align: right; margin-left: 20px;"> plus % </div>	2915.00 5425.00 2915.00
EXPENSES		
Accounting	JUNE	500.00 C3
Expediting	JUNE 1-30	1400.00 D3
Room & Board in Whse	18 man days @ \$45	810.00 DV
	total days at \$ /day	
Field equipment from AC stock		2847.50 D1
Xerox copies, 375 copies at 25¢/copy		93.75 C1
Radio rental	5 BX 11 JUNE 1-30	300.00 D1
1/2 Rental AC BLUE truck	JUNE 1-20 at \$40 /mo. day	
	plus (23,965 to 26000) 2115 kms at 25¢/km	664.38 D4
Petty cash	29.85 D1; 15 D3; 13.25 C2; 2 D1; 5120 D3; 420 D1; 9.95 D3	76.95
Blueprinting	18 sq. ft. Ozalid at 30 c/ft plus 6 sq. ft. Dilar at \$ 2.50 /ft.	20.40 C1
Drafting	36 hrs. at \$ 22 /hr.	792.00 C1
Rental AC Brown Van	June 24-30 @ \$40/day plus 240km @ .125	340.00 D4
Rental AC binocular microscope	JUNE 1-30 @ \$50/mo	50.00 D1
M. Phillips expenses, May 30		9.22 C2
Nelsons		5.00 D1
Can. Freightway		21.33 D3
Yukon Inland Print		17.81 CV
Receiver General, maps.		10.00 CV
B.C. & Yuk. Ch.		8.75 D1
Telephone - 10.20 +		10.20 CV
Whitehorse Stationers		5.81 CV
Sub-let 1.0 hr 2x JV helicopter @ \$493.68/hr net		493.68 CV
Worwoods		3.00 CV
Receiver General, maps		2.00 CV
		8481.78
		29,921.78
CREDITS		
C. A. MAIN - 1 day working ON CUBOV		265.00
SUBLETS QLP 475KMS TO CUBOV, 1212h @ 290		3538.00 G1
		(3,803.00)
Total		\$ 26,118.78

In Account With
 QUARTZ LAKE PROJECT

Project -

Date --

JULY 31, 1982

		Total
MANAGEMENT		
July		2,250.00
LABOUR		
Supervisory		A
Field		
✓ J. CARNE - JULY 1-31 @ 3000		3000.00
✓ D. BILLARD - JULY 1-31 @ 1950		1950.00
✓ C. GRIGG - " " " @ 1650		1650.00
✓ C. OPSITMOEN - " " " @ 1450		1450.00
✓ B. Mc DANIEL - " " " @ 1400		1400.00
✓ R. CARSWELL - " " " @ \$50/day		1550.00
		B
		11,000.00
	plus 50 %	5,500.00
Casual		
EXPENSES		
Accounting JULY		500.00 C3
Expediting JULY		1400.00 D3
Room & Board in Whse		
	total days at \$ /day	
Field equipment from AC stock		
Xerox copies, 82 copies at 25¢/copy		20.50 C1
Radio rental 5 BX 11 July 1-31		300.00 D1
Rental AC Brown truck 10 DAYS at \$ 40 /day		
plus (- to 48479) 129 kms at 25¢/km		444.75 D4
Petty cash 2.72 C2; 4.65 D2; 10 D3		17.37 C2-D2 D3-10
Telephone 11.61		11.61 CV
Blueprinting, - sq. ft. Ozalid at c/ft plus - sq. ft. Dilar at \$ /ft.		
Drafting, hrs. at \$ /hr.		
rental AC binocular microscope, July 1-31		50.00 D1
postage		75.00 CV
Winter Lake water		11.75 D2
Ford Fuel		4.16 D2
Norden Machine		9.55 D1
People Drug		28.22 D1
Kitt Marine		20.78 D1
		2893.69
		21,043.69
Credits		
Sub-let Billard, Grigg, Opsitmoen & McDaniel to TOV July 5-14 - 10 crew days @ \$431/d		(4310.00) B
Sub-let J. Carne to ZX, July 20		(235.00) B
drum return credit to ZX ^{crew} 4 drum		(352.00) B3
fuel sold to GOV on July 7 (5 drums)		(704.93) B3
sublet 27.2 hrs GOV to TOV July 4 to 15		(8208.80) B1
sublet 317 hrs to ZX July 20 plus 8 @ \$5.55 fuel		(1201.55) B1 1056 B3 141
		(15,012.28)
	Total	66,314.41



TRANS NORTH AIR

TRANS NORTH TURBO AIR LTD.

BOX 438 • WHITEHORSE • YUKON TERRITORY • Y1A 3T6
TELEPHONE 1493, MR 2177 • TELEX 936-B 290

Archer, Johnson & Assoc.

ACCOUNT NUMBER	1021
60068	
INVOICE DATE	25/06/82
A/C TYPE	47ED
AIRCRAFT REGISTRATION C	FG
FLIGHT DATE	200687
PURCHASE ORDER NO.	

CHARTERER *QLP*

BILLING ADDRESS

FUEL & OIL-X	TNTA FUEL USED	HRS.-GALS.	FROM
TNTA	<input checked="" type="checkbox"/>		

FROM	MILES	HOURS	ZONE	REMARKS - NO. OF PASS - FREIGHT LBS.
<i>ROY LAKE</i>				
<i>TO</i>				
<i>Mac Ridge</i>		<i>1.9</i>		<i>Kris</i>
<i>(more Buzzard Holes)</i>				<i>Buzzard + Beowice</i>
				<i>Joan-Charlie-Kim</i>

SUB	S-T	AMOUNT
<i>144</i>	<i>5020</i>	<i>501.60</i>

<i>1.9 @ 264.00</i>	<i>501.60</i>
@	
@	
@	

TERMS NET 30 DAYS
2% INTEREST PER MONTH (24% PER ANNUM) WILL BE CHARGED ON ALL OUTSTANDING AMOUNTS OVER 30 DAYS

X *you are*
CHARTERER'S SIGNATURE

KRC
PILOT'S SIGNATURE

INITIALS *SEF*
CO-PILOT'S NAME

ENGINEER'S NAME
Scott Fletcher

FLIGHT ATTENDANT

WAITING TIME	@	/HR.
FUEL:	@	/GAL.
FUEL:	@	/GAL.
MEALS & LODGING		
OTHER		
OTHER		

TOTAL \$ *501.60*

FLIGHT REPORT INVOICE

PA
CH

TRANS NORTH AIR

TRANS NORTH TURBO AIR LTD.

BOX 4538 • WHITEHORSE • YUKON TERRITORY • Y1A 1T7
 TELEPHONE (403) 638 2177 • TELEX 036 8 290



Archer-Cathrod Assoc Ltd

CHARTERER

QLP

BILLING ADDRESS

FUEL & OIL-X	TNTA FUEL USED	HRS.-GALS.	FROM
TNTA	CUST.		
	✓		

ACCOUNT NUMBER	1021
60073	
INVOICE DATE	15/07/82
A/C TYPE	47B2
AIRCRAFT REGISTRATION C	FQJV
FLIGHT DATE	26/06/82
PURCHASE ORDER NO.	
Contract	

FROM	MILES	HOURS	ZONE	REMARKS - NO. OF PASS - FREIGHT LBS.
Roy Lake				
Buzzard's Gulch		0.7		Buzzard lot course
AUP		0.7		Joon + Bernice

SUB	G.L.	AMOUNT
114451020		36960

1.4 ⁰	264 ⁰	3696 ⁰
e		
e		
e		

TERMS NET 30 DAYS
 2% INTEREST PER MONTH (24% PER ANNUM) WILL
 BE CHARGED ON ALL OUTSTANDING AMOUNTS
 OVER 30 DAYS

X *[Signature]*
 CHARTERER'S SIGNATURE

KRC *[Signature]*
 PILOT'S SIGNATURE

INITIALS CO-PILOT'S NAME

SEF Scott Fletcher
 ENGINEER'S NAME

FLIGHT ATTENDANT

WAITING TIME	@	/HR.
FUEL:	@	/GAL.
FUEL:	@	/GAL.
MEALS & LODGING		
OTHER		
OTHER		

TOTAL \$ 36960

FLIGHT REPORT
 INVOICE



TRANS NORTH AIR

TRANS NORTH TURBO AIR LTD

117 2 4318 • WHITEHORSE • YUKON TERRITORY • CANADA
TELEPHONE (403) 644-2777 • TELETYPE 0361 R 290

Procter Cathrod & Associates

CHARTERER

QLP

BILLING ADDRESS

FUEL & OIL-TNTA	DIL-TNTA	TNTA FUEL USED	HRS.-GALS.	FROM

ACCOUNT NUMBER	1021
	60080
INVOICE DATE	15/07/82
A/C TYPE	47B2
AIRCRAFT REGISTRATION C	FQJY
FLIGHT DATE	02/07/82
PURCHASE ORDER NO.	Contract

FROM	<i>ROY LAKE</i>	MILES	HOURS	ZONE	REMARKS - NO. OF PASS.	FREIGHT LBS.
TO	<i>AUP area + Ackland CK</i>		<i>2.4</i>		<i>Dave + Kris Bernice + Charlie</i>	

SUB	G.L.	AMOUNT
<i>1414</i>	<i>STO120</i>	<i>633 60</i>

2.4 @ 26400 = 63360

TERMS NET 30 DAYS
2% INTEREST PER MONTH (24% PER ANNUM) WILL BE CHARGED ON ALL OUTSTANDING AMOUNTS OVER 30 DAYS

X *[Signature]*
CHARTERER'S SIGNATURE

RRC
INITIALS

Scott Fletcher
ENGINEER'S NAME

FLIGHT ATTENDANT

WAITING TIME	@	/HR.
FUEL:	@	/GAL.
FUEL:	@	/GAL.
MEALS & LODGING		
OTHER		
OTHER		

TOTAL \$ 633 60

FLIGHT REPORT INVOICE



TRANS NORTH AIR

TRANS NORTH TURBO AIR LTD

2336 • WHITEHORSE • YUKON TERRITORY • Y1A 3T6
 TELEPHONE: 473-5411 • TELEFAX: 046-8290

Archer Cathro & Assoc Ltd

CHARTERER

QLP

BILLING ADDRESS

ACCOUNT NUMBER	1021
66197	
INVOICE DATE	15/08/82
A/C TYPE	47B2
AIRCRAFT REGISTRATION C	FQJY
FLIGHT DATE	29/07/82
PURCHASE ORDER NO.	

FUEL	OIL-X	TNTA FUEL USED	HRS.-GALS.	FROM
TNTA	CUST.			
	✓			

FROM TO	MILES	HOURS	ZONE	REMARKS - NO. OF PASS - FREIGHT LBS.
<i>Roy Lake</i>				
<i>AUP - base line - baggers</i>		<i>1.1</i>		<i>Buzzard-Scott Bernice & Charlie</i>
<i>Regional - West Coal Ridge - Warburton - S. AUP</i>		<i>1.2 1.7</i>		<i>Joan</i>

SUB	G.L.	AMOUNT
<i>1445</i>	<i>STCK</i>	<i>739 20</i>

2.8 @ 264 = 739 20

TERMS NET 30 DAYS
 2% INTEREST PER MONTH (24% PER ANNUM) WILL BE CHARGED ON ALL OUTSTANDING AMOUNTS OVER 30 DAYS

X *[Signature]*
 CHARTERER'S SIGNATURE

RRC *[Signature]*
 PILOT'S SIGNATURE

INITIALS: *SEF* ENGINEER'S NAME: *Scott Fletcher*
 CO-PILOT'S NAME: _____ FLIGHT ATTENDANT: _____

WAITING TIME	@	/HR.
FUEL:	@	/GAL.
FUEL:	@	/GAL.
MEALS & LODGING		
OTHER		
OTHER		

TOTAL \$ 739 20

FLIGHT REPORT INVOICE



TRANS NORTH AIR
TRANS NORTH TURBO AIR LTD

1004 AVE • WINTERBURN • YUKON TERRITORY • YEAH
TELEPHONE (413) 886-2171 TELEFAX (413) 886-2172

Archer Cathro & Assoc Ltd
CHARTERER

QLP

BILLING ADDRESS

ACCOUNT NUMBER	1021
66200	
INVOICE DATE	15/08/82
A/C TYPE	47B2
AIRCRAFT REGISTRATION C	FQJY
FLIGHT DATE	3/07/82
PURCHASE ORDER NO.	
<i>Contract</i>	

FUEL & OIL	TNTA FUEL USED	HRS.-GALS.	FROM
TNTA	<input checked="" type="checkbox"/>		
CUST			

FROM	MILES	HOURS	ZONE	REMARKS - NO. OF PASS. FREIGHT LBS.
<i>Roy LAKE</i>				
<i>AUP - bags</i>		<i>0.7</i>		<i>Cris - Buzzard</i>
<i>Regional - West Coal River - Pans</i>		<i>7.7</i>		<i>Joan Charlie Buzzard Kris</i>

SUB	G.L.	AMOUNT
<i>144</i>	<i>5020</i>	<i>22176.0</i>

<i>8.4</i>	<i>204.0</i>	<i>22176.0</i>

TERMS: NET 30 DAYS
2% INTEREST PER MONTH (24% PER ANNUM) WILL BE CHARGED ON ALL OUTSTANDING AMOUNTS OVER 30 DAYS

X *Archer Cathro & Assoc Ltd*
CHARTERER'S SIGNATURE

KRC *Scott Fletcher*
INITIALS CO-PILOT'S NAME

SEF *Scott Fletcher*
ENGINEER'S NAME

FLIGHT ATTENDANT

WAITING TIME	@	/HR.
FUEL:	@	/GAL.
FUEL:	@	/GAL.
MEALS & LODGING		
OTHER		
OTHER		

TOTAL \$*22176.00*

FLIGHT REPORT INVOICE



WATSON LAKE OIL DISTRIBUTORS LTD.
 BOX 371, WATSON LAKE, YUKON TERR. Y0A 1C0
 PHONE 536-7467

PACIFIC PETROLEUMS LTD.

AGENT FOR
 THIS LOADING NO

METER READING FINISH

PREVIOUS READING NO.
 SOLD TO

METER READING START

ARCHER - CATHRO

PROJECT
 8212
 ORDER NO.
 DATE
 10 6 52
 DAY MTH. YR.

TERMS
 Change

13557

NO.	SIZE	DESCRIPTION	QUANTITY	PRICE	AMOUNT
		PREMIUM C <input type="checkbox"/> M <input type="checkbox"/>			
		REGULAR C <input type="checkbox"/> M <input type="checkbox"/>			
		UNLEADED C <input type="checkbox"/> M <input type="checkbox"/>			
		DIESEL C <input type="checkbox"/> M <input type="checkbox"/>			
		DOMESTIC * FURNACE OIL			
		* STOVE OIL			
		100 / 130	3895	51.0	1996.45
19/205		DRUMS 'Teflon'	19	35.00	665.00
		FEDERAL EXCISE TAX TO A-PORT.			60.00
		GASOLINE TAX		007	27.27
		FUEL OIL TAX			/
		PROVINCIAL SALES TAX			/

TAX LICENCE
 NUMBER ETC.

TOTAL ▶ 2738.72

RECEIVED THE ABOVE GOODS IN GOOD ORDER AND I/WE AGREE TO PAY THE ABOVE AMOUNT

CUSTOMER
 SIGNATURE

R. B. Stinde BCYAS S-534

RECEIVED
 PAYMENT

INTEREST OF 1 1/2% PER MONTH (18% PER YEAR) MAY BE CHARGED
 ON OVERDUE ACCOUNTS.

* UNLAWFUL TO USE FOR OTHER THAN LIGHTING AND
 HEATING PURPOSES.

THIS IS YOUR INVOICE



CHEMEX LABS LTD.

212 BROOKSBANK AVE.
NORTH VANCOUVER, B.C.
CANADA V7J 2C1
TELEPHONE: (604) 984-0221
TELEX: 043-52597

• ANALYTICAL CHEMISTS

• GEOCHEMISTS

• REGISTERED ASSAYERS

*** INVOICE ***

To : ARCHER CATHRO & ASSOC. (1981) LTD.,

Invoice # : 18211812

P.O. BOX 4127,
WHITEHORSE, Y.T.
Y1A 3S9

Date : 20-JUL-82
P.O. # : NONE
Project QLP

Invoice for analytical work reported on certificate(s) A8211812-001 to -003

Quantity	Analysed for code description	unit price	amount
120	101 - Au NAA ppb	6.00	720.00

Sample preparation and other charges :

120	203 - -35 mesh sieve + ring	1.50	180.00
-----	-----------------------------	------	--------

TOTAL	\$ 900.00
Discount (20 %)	\$ 180.00

Please pay this amount ----> \$ 720.00
=====

TERMS -- NET 30 DAYS

2.0 % per month (24 % per annum) charged on overdue accounts



MEMBER
CANADIAN TESTING
ASSOCIATION



CHEMEX LABS LTD.

212 BROOKSBANK AVE.
NORTH VANCOUVER, B.C.
CANADA V7J 2C1

TELEPHONE: (604) 984-0221
TELEX: 043-52597

• ANALYTICAL CHEMISTS

• GEOCHEMISTS

• REGISTERED ASSAYERS

*** INVOICE ***

To : ARCHER CATHRO & ASSOC. (1981) LTD.,

Invoice # : I8212446

P.O. BOX 4127,
WHITEHORSE, Y.T.
Y1A 3S9

Date : 17-AUG-82
P.O. # : NONE
Project CLP

Invoice for analytical work reported on certificate(s) A8212446-001 to -006

Quantity	code	description	unit	price	amount
240	101	Au NAA	ppb	6.00	1440.00

Sample preparation and other charges :

240	203	-35 mesh sieve + ring		1.50	360.00
-----	-----	-----------------------	--	------	--------

TOTAL	\$ 1800.00
Discount (20 %)	\$ 360.00

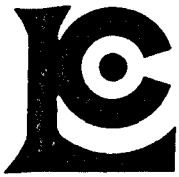
Please pay this amount ----> \$ 1440.00
=====

TERMS -- NET 30 DAYS

2.0 % per month (24 % per annum) charged on overdue accounts



MEMBER
CANADIAN TESTING
ASSOCIATION



CHEMEX LABS LTD.

212 BROOKSBANK AVE.
 NORTH VANCOUVER, B.C.
 CANADA V7J 2C1
 TELEPHONE: (604) 984-0221
 TELEX: 043-52597

• ANALYTICAL CHEMISTS

• GEOCHEMISTS

• REGISTERED ASSAYERS

*** INVOICE ***

To : ARCHER CATHRO & ASSOC. (1981) LTD.,

Invoice # : I8214278

1016-510 WEST HASTINGS
 VANCOUVER, B.C.
 V6B 1L8

Date : 29-NOV-82
 P.O. # : NONE
 Project QLP

Invoice for analytical work reported on certificate(s) A8214278-001 to -006

Quantity	Analysed for code description	unit price	amount
240	229 - Partial ICP digestion		
	553 - Arsenic ppm (ICP)		
	556 - Tungsten ppm (ICP)		
	560 - Lead ppm (ICP)		
	561 - Bismuth ppm (ICP)		
	568 - Manganese ppm (ICP)		
	577 - Copper ppm (ICP)	5.50	1320.00

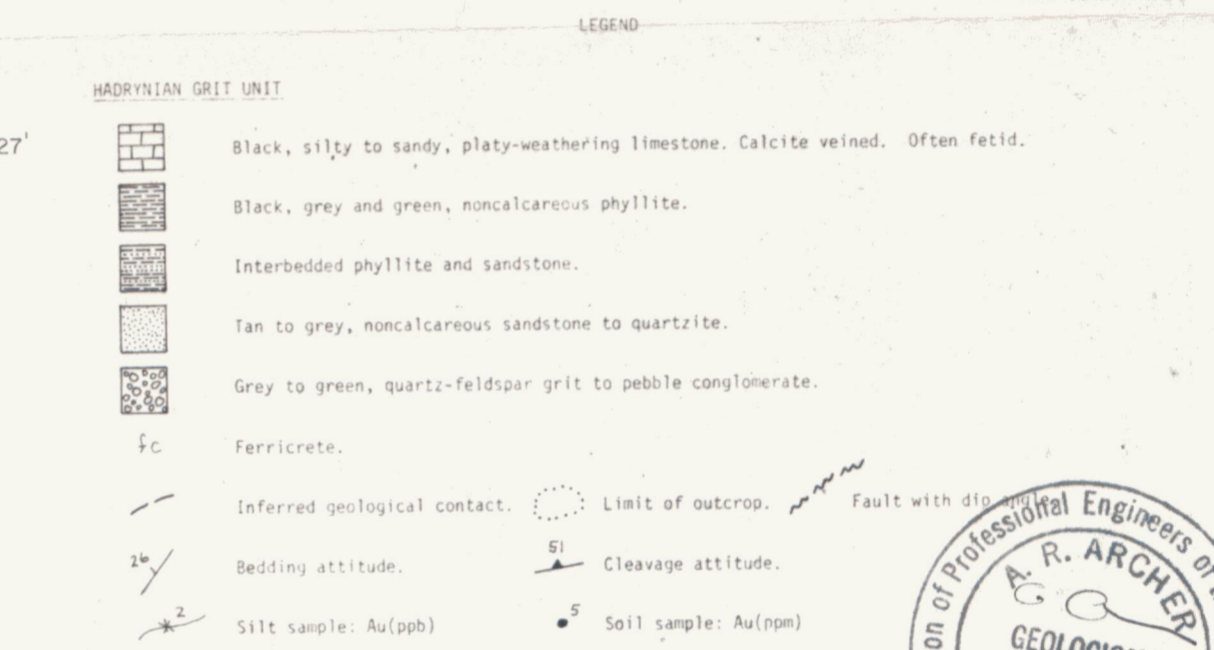
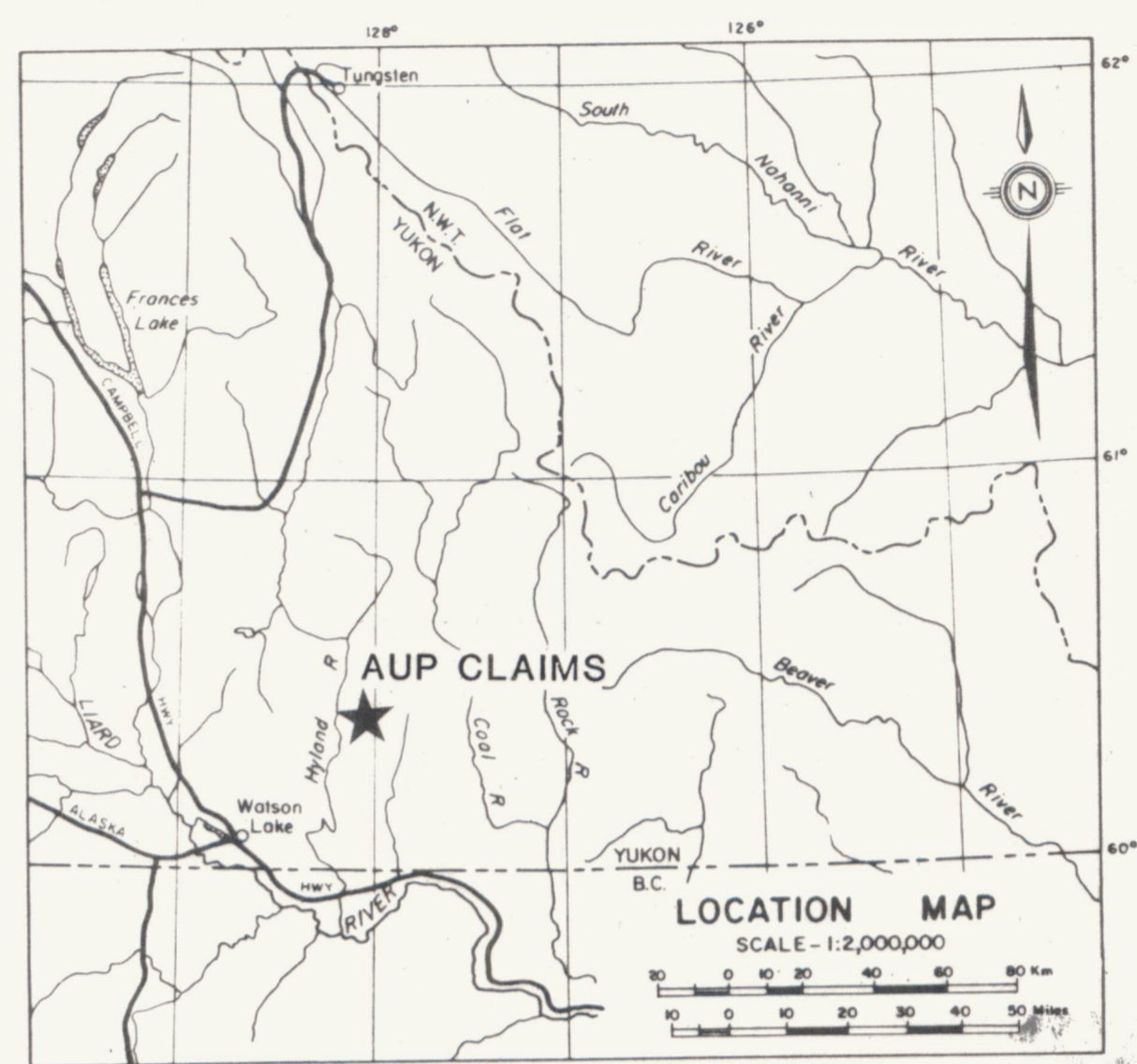
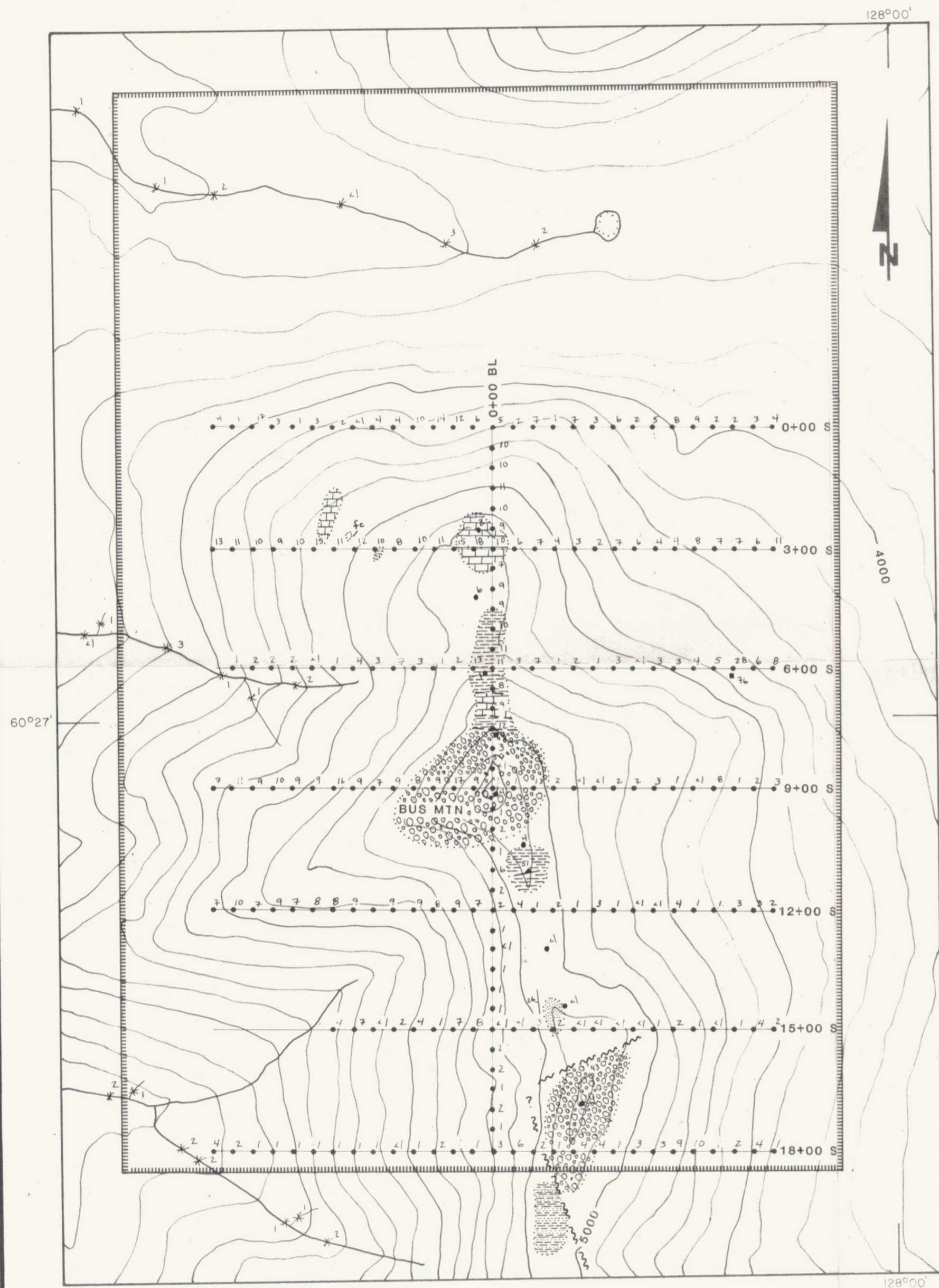
Sample preparation and other charges :

240	214 - Bag pulp	0.00	0.00
-----	----------------	------	------

TOTAL \$ 1320.00
 Discount (20 %) \$ 264.00

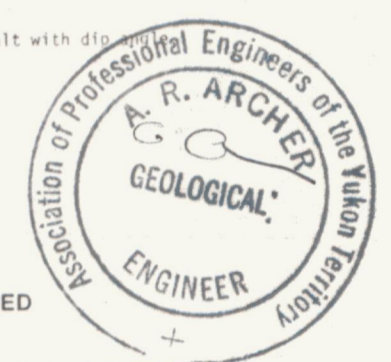
Please pay this amount ----> \$ 1056.00
 =====

Terms -- net 30 days
 2.0 % per month (24 % per annum) charged on overdue accounts

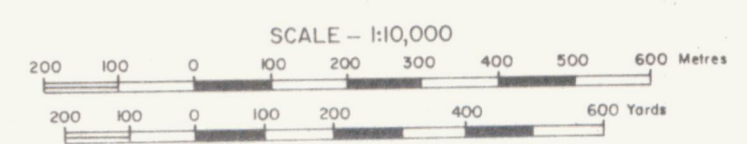


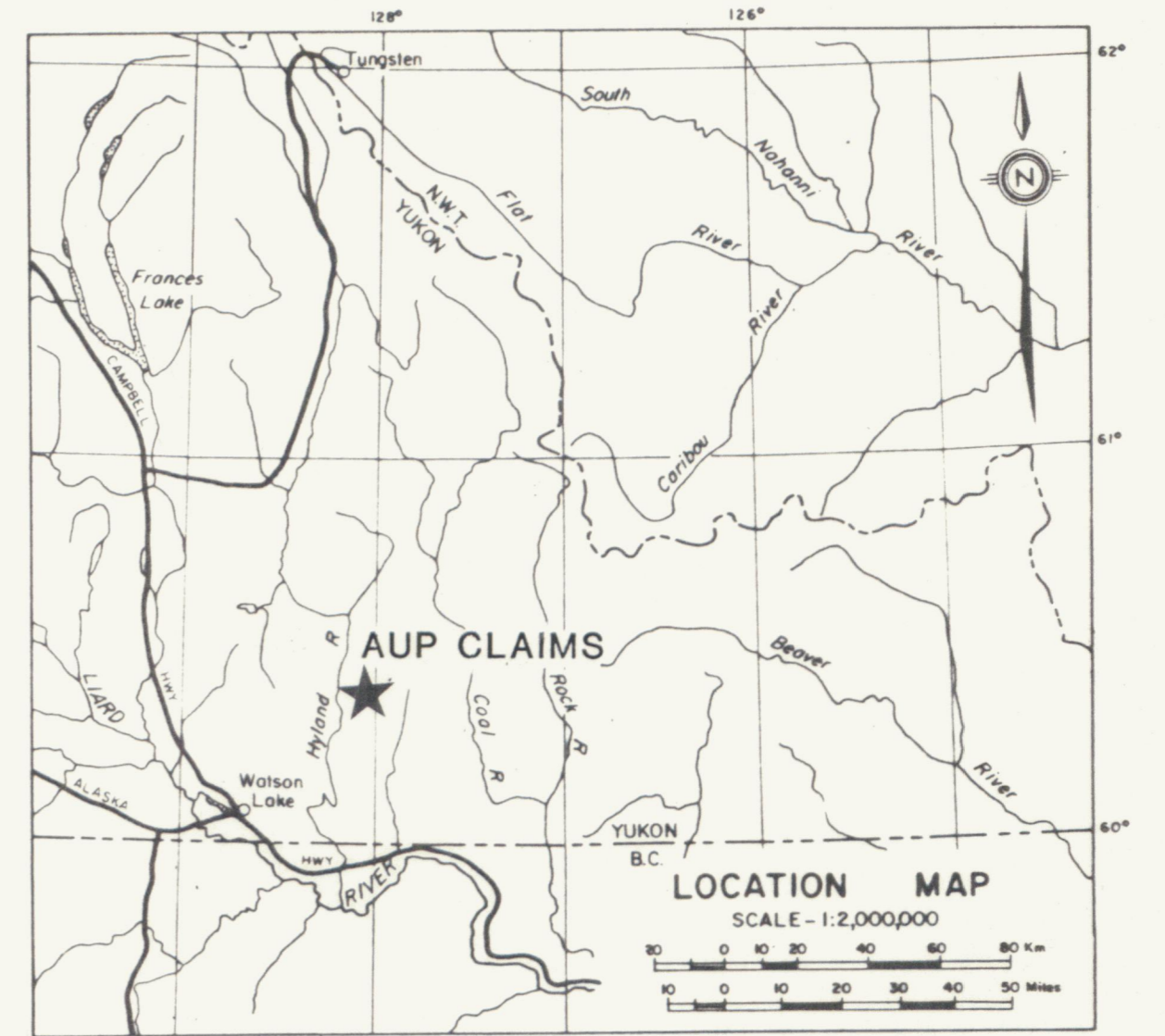
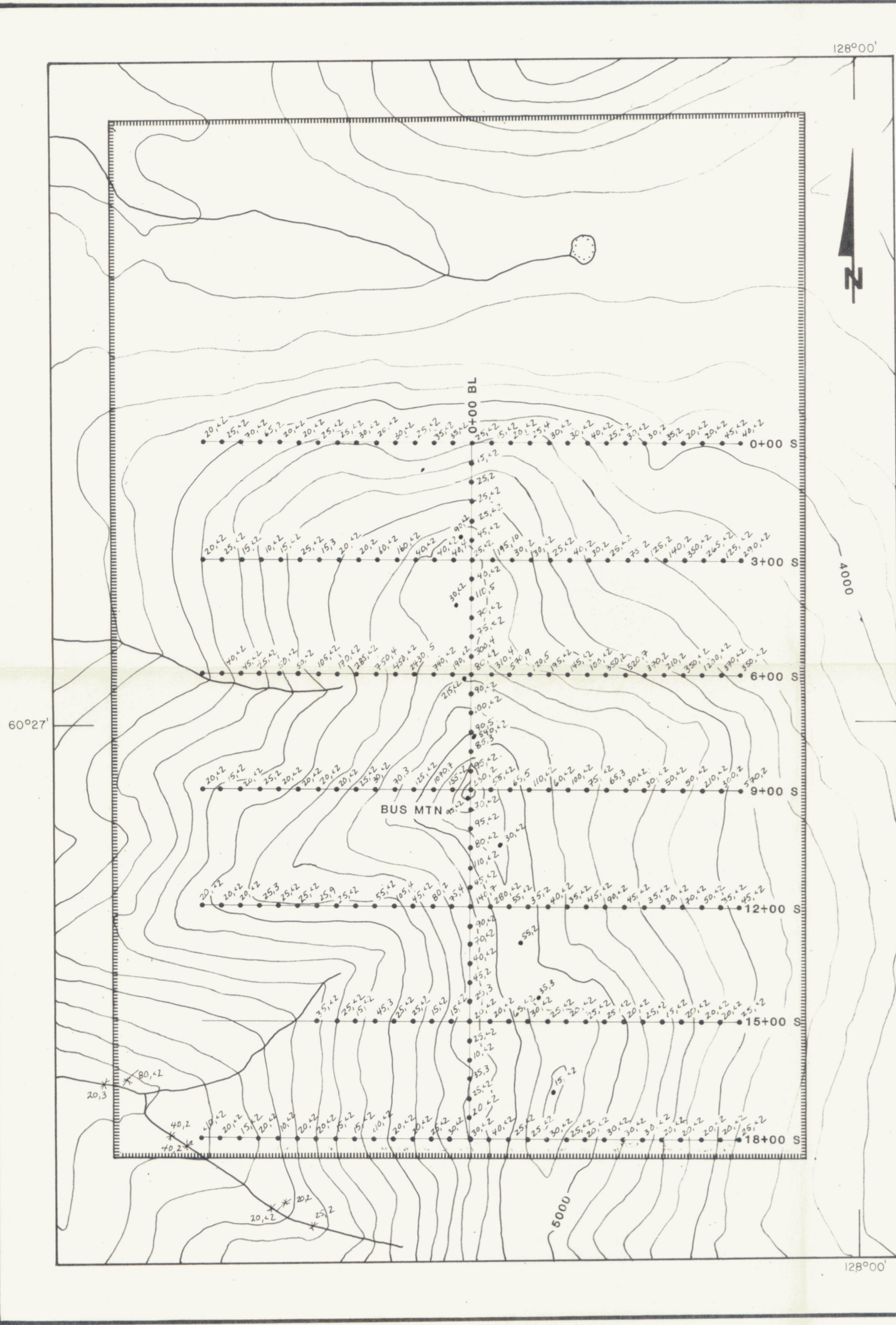
091424

Figure 2
 ARCHER, CATHRO & ASSOCIATES (1981) LIMITED



GEOLOGY AND GOLD GEOCHEMISTRY
AUP CLAIMS
QUARTZ LAKE PROJECT





- LEGEND
- Sample locations (-35 mesh fraction analysed)
 - 25+2 soil sample: ppm As, ppm Bi
 - * 20+3 silt sample: ppm As, ppm Bi
 - ▭ Claim boundary

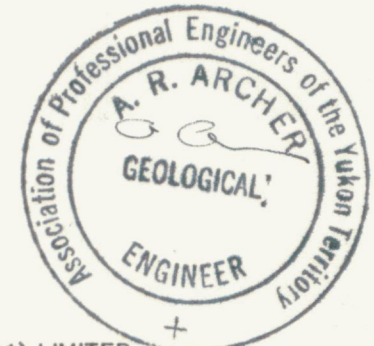
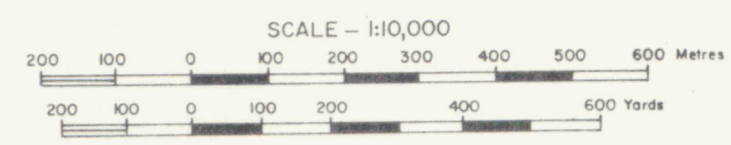
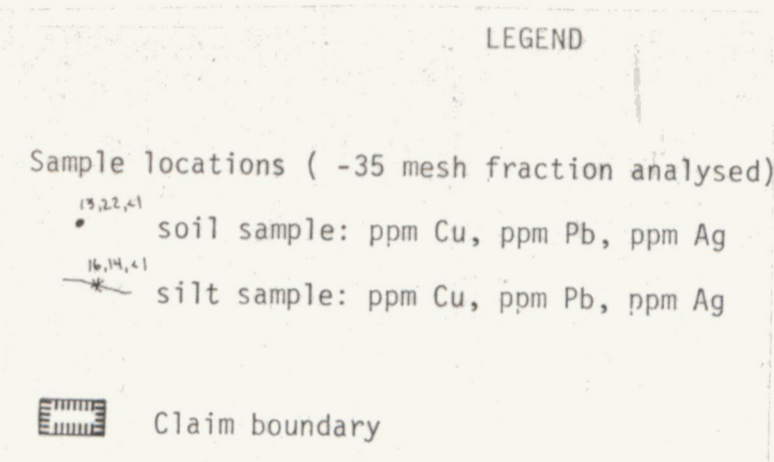
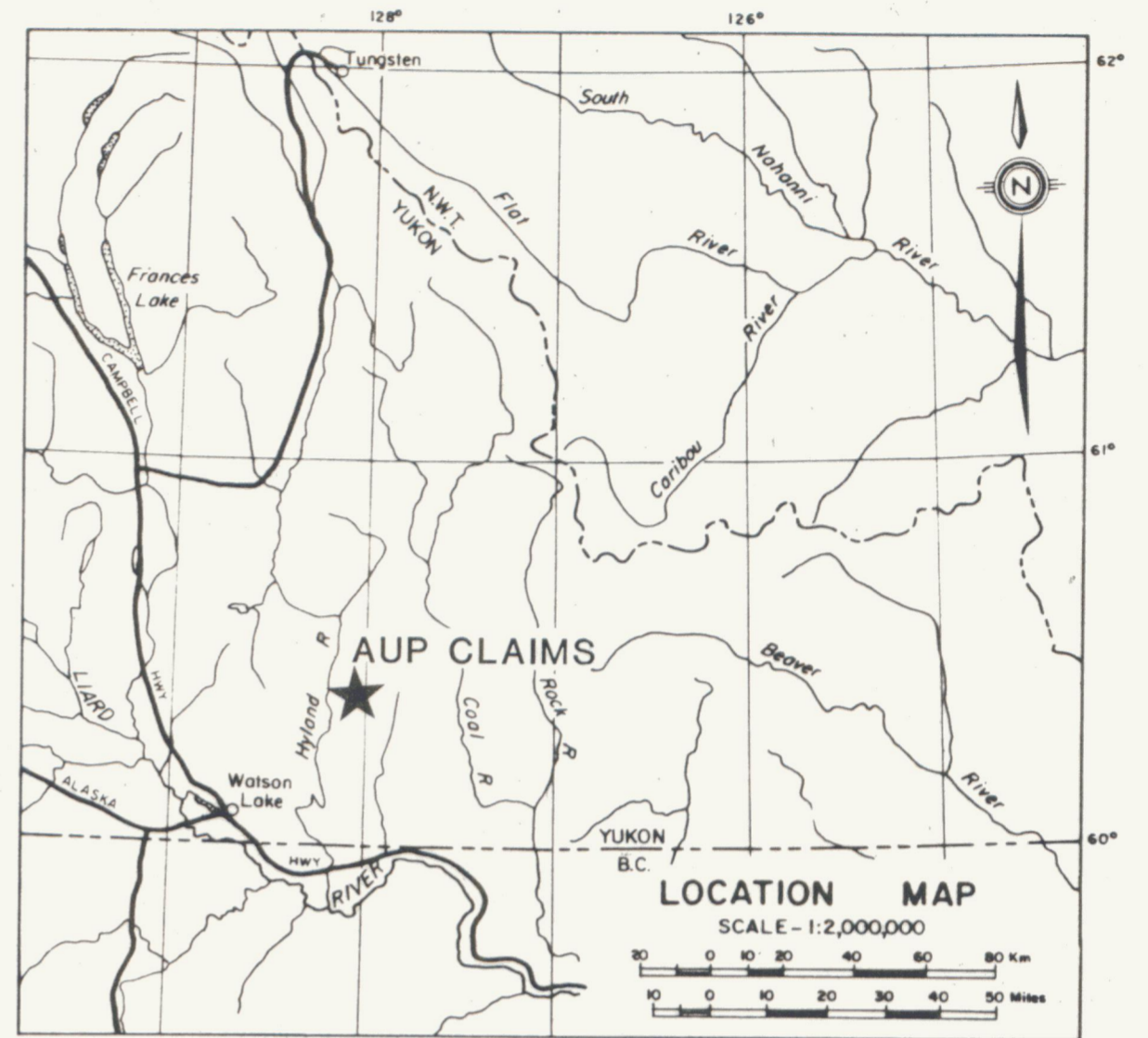
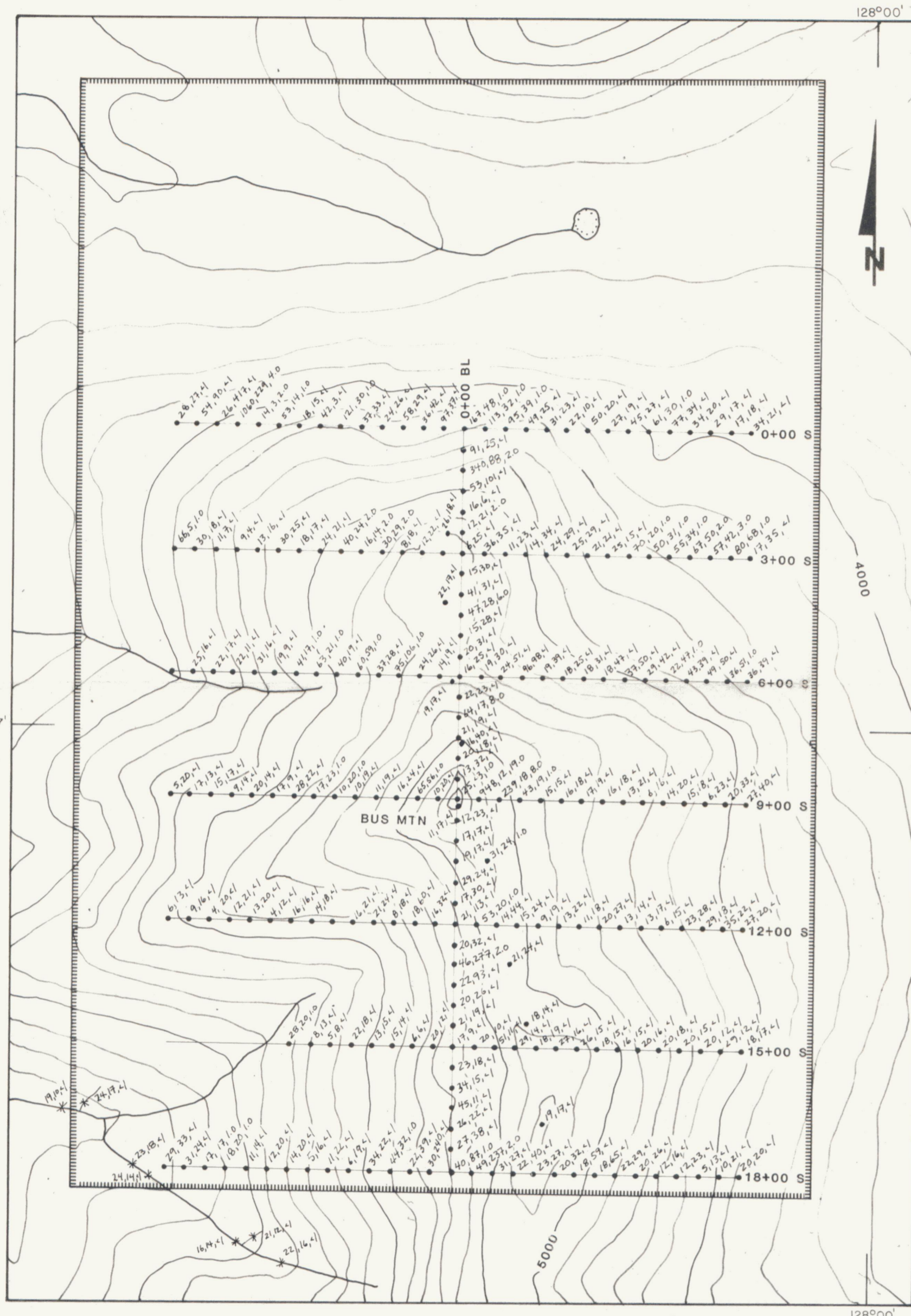


Figure 3
 ARCHER, CATHRO & ASSOCIATES (1981) LIMITED

ARSENIC AND BISMUTH GEOCHEMISTRY
AUP CLAIMS
QUARTZ LAKE PROJECT

001424





091424

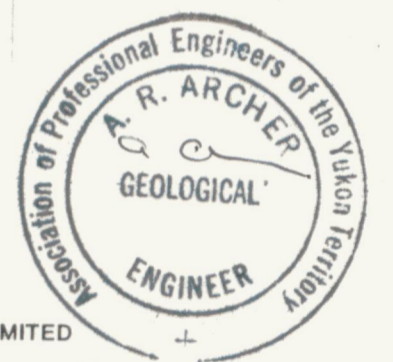


Figure 4
 ARCHER, CATHRO & ASSOCIATES (1981) LIMITED
COPPER, LEAD, AND SILVER GEOCHEMISTRY
AUP CLAIMS
 QUARTZ LAKE PROJECT

