



LINECUTTING ASSESSMENT REPORT
RAIL 71, 72, 95, 103, 104 AND 112 CLAIMS

Dawson Mining District
NTS 116 C/8

Noranda Exploration Company, Limited (NPL)
August 10-31, 1982 R.S. Rogers, M.Sc.

091413

1013

108 000
1014
1000
1000

This report has been examined by
the Geological Evaluation Unit
under Section 53 (4) Yukon Quartz
Mining Act and is allowed as
representation on work to the amount
of \$ 2,100-

P. Watson

for Regional Manager, Exploration and
Geological Services for Commissioner
of Yukon Territory.

TABLE OF CONTENTS

	<u>PAGE</u>
INTRODUCTION	2
LINECUTTING	2
APPENDICES :	
I : Statement of Qualifications	4
II : Statement of Costs	5

LIST OF FIGURES

FIGURE 1 : Location Map	1
FIGURE 2 : Claim Boundary and Grid	7

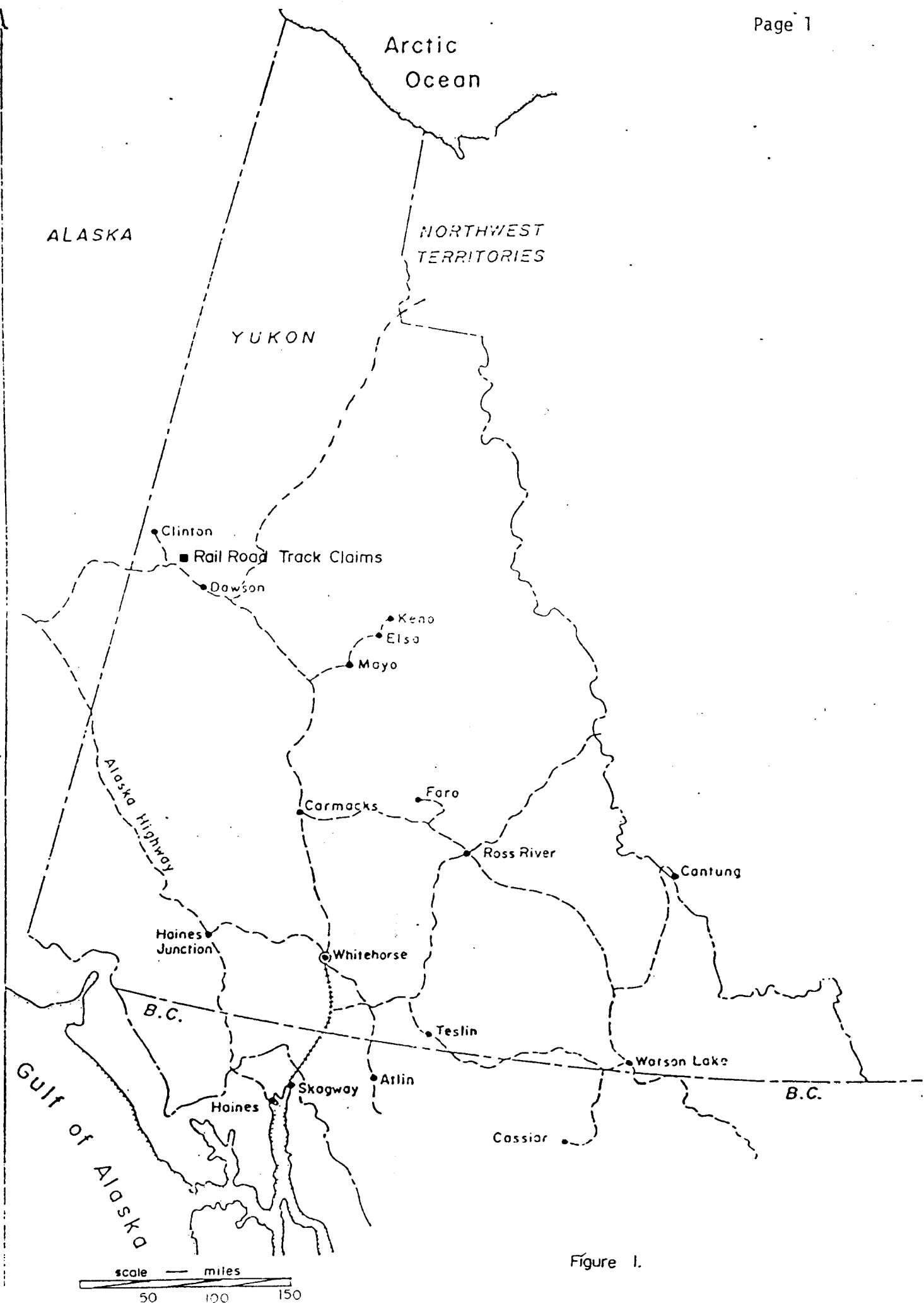


Figure 1.

INTRODUCTION

The claims referred to in this report are registered in the name of Noranda Exploration Company, Limited (No Personal Liability) and comprise the following :

Rail 71	YA32843
Rail 72	YA32844
Rail 95	YA32867
Rail 103	YA32875
Rail 104	YA32876
Rail 112	YA32884

The property is located 35 miles northwest of Dawson City, Yukon Territory, on claim sheet 116 C/8. Access is by helicopter from Dawson City.

The 1982 program included linecutting for a total of 36 km.

LINECUTTING

Linecutting was contracted to MBW Surveys of No. 205 - 212 Main Street, Whitehorse, Yukon Territory. MBW established a four man fly camp on the Rail 71 claim for the duration of the project. Supervision was provided by R.S. Rogers, M.Sc. of Noranda Exploration Company, Limited (NPL).

Baseline 60+00E was extended 4400 meters from 162+00N to 202+00N. Crosslines were cut every 200 meters along this line, extending 2000 meters from 50+00E to 70+00E.

All lines were cut with chainsaw, axe and machete; survey control was provided by chaining and use of right angle prism, stations were backsighted and picketed every 50m on all lines.

APPENDICES

STATEMENT OF QUALIFICATIONS

I, Randall Stewart Rogers, of the City of Whitehorse, in the Yukon Territory, do hereby certify :

THAT I have been employed as a Geologist by Noranda Exploration Company, Limited (No Personal Liability) since 01 January 1980;

THAT I am a graduate of the University of British Columbia with the degree of Bachelor of Science (Honours) in Geology;


THAT I am a graduate of Queen's University at Kingston, Ontario, with the degree of Master of Science in Mineral Exploration;

THAT I am a Notary Public in and for the Yukon Territory;

THAT I am a member of the Canadian Institute of Mining and Metallurgy (Geology Section);

THAT I am a member of the Geological Association of Canada, and

THAT I am a Professional Geologist (P. Geol.) licenced under the Association of Professional Engineers, Geologists and Geophysicists of Alberta.



(RANDALL STEWART ROGERS) GEOLOGIST
NORANDA EXPLORATION CO., LTD. (NPL)

NORANDA EXPLORATION COMPANY, LIMITED

STATEMENT OF COST

PROJECT CASSIAR CREEK DATE October 1982
TYPE OF REPORT Line Cutting

a) Wages:

No. of Days
Rate per Day \$
Dates From:
Total Wages x \$

b) Food and Accomodation:

No of days
Rate per day \$
Dates From:
Total Cost x \$

c) Transportation:

No of days
Rate per day \$
Dates From:
Total Cost X \$

d) Instrument Rental:

Type of Instrument
No of days
Rate per day \$
Dates From:
Total Cost X \$

Type of Instrument
No of days
Rate per day \$
Dates From:
Total Cost X \$

f) Analysis
(See attached schedule)

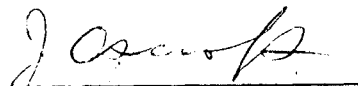
g) Cost of preparation of Report
Author
Drafting
Typing

h) Other: Contractor 11,160.00

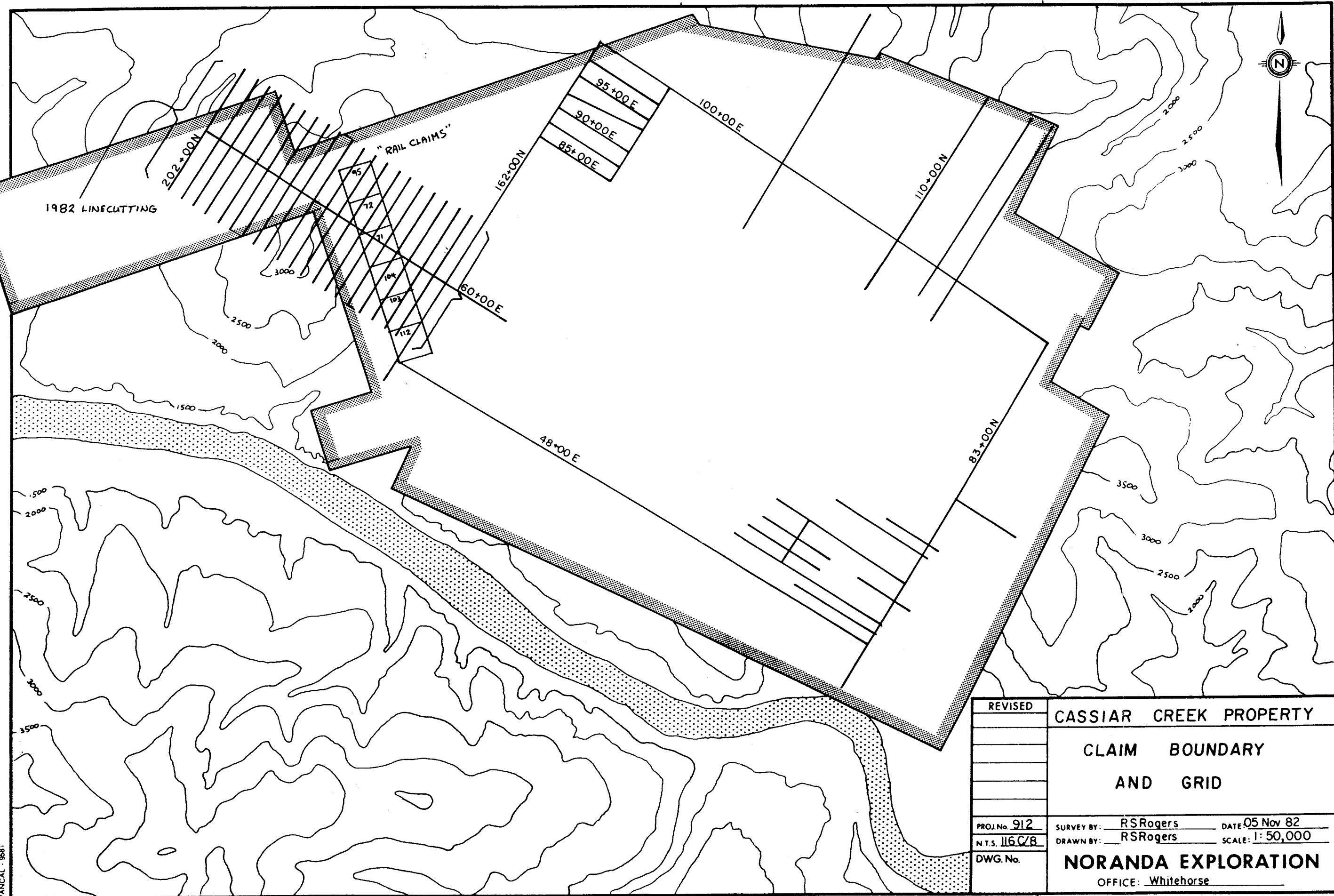
Total Cost \$11,160.00

e) Unit costs for
No of days
No of units
Unit costs /
Total Cost x

The Exploration cost of \$11,160.00
is certified correct by



J. Oscroft
Br. Accountant



REVISED	CASSIAR CREEK PROPERTY	
	CLAIM BOUNDARY	
	AND GRID	
PROJ. No. 912	SURVEY BY: RS Rogers	DATE: 05 Nov 82
N.T.S. 116 C/B	DRAWN BY: RS Rogers	SCALE: 1: 50,000
DWG. No.	NORANDA EXPLORATION	
	OFFICE: Whitehorse	

JAN CAL - 958

PJA



TRENCHING AND GEOLOGICAL SAMPLING
ASSESSMENT REPORT

RAIL 181 CLAIM

Dawson Mining District
NTS 116C/8

NORANDA EXPLORATION COMPANY, LIMITED (NPL)

August 10-31, 1982

R.S. Rogers, M.Sc.

091413

2013

TABLE OF CONTENTS

	<u>PAGE</u>
INTRODUCTION	2
TRENCHING AND SAMPLING	2
APPENDICES :	
I Statement of Qualifications	5
II Statement of Costs	6

LIST OF FIGURES

FIGURE 1 : Location Map	1
FIGURE 2 : Claim Boundary and Grid	8
FIGURE 3 : 1982 Trenching	(in pocket)

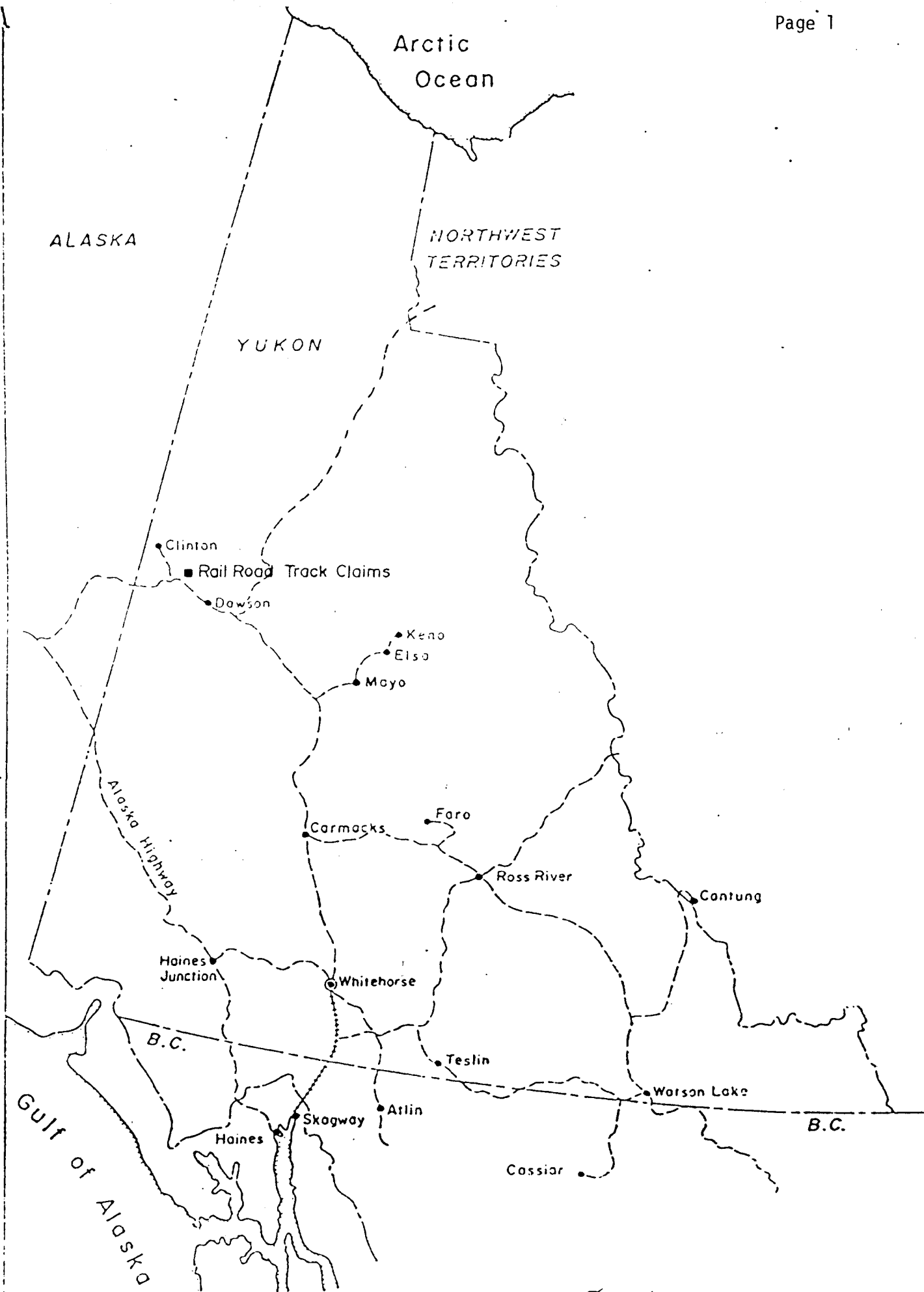


Figure 1.

INTRODUCTION

The Rail 181 claim (YA47233) is registered in the name of Noranda Exploration Company Limited, (N.P.L.).

The property is located 35 miles northwest of Dawson City, Yukon Territory, on claim sheet 116 C/8. Access is by barge from Dawson City.

The 1982 program included approximately 300 meters of trenching and geological sampling.

TRENCHING AND SAMPLING

Trenching was contracted to E. Caron Diamond Drilling of #7 Roundel Road, Whitehorse, Yukon Territory, who supplied a D6C crawler bulldozer and operator (Mr. J. Gleason). Trenching was supervised by Mr. G. Davidson, B.Sc. of Noranda Exploration Co. Ltd.

Trenching was designed to explore a linear feature striking north-erly across the Rail 181 claim and visible in aerial photography and seen as a distinct linear in the 1980 Noranda aeromagnetic survey (see assessment report by T. Walker).

The D6C bulldozer was walked to the trench site from Pionjar Creek and excavated a shallow trench some 300 meters long across the strike of the linear feature.

Sampling by Mr. Davidson revealed that the linear was caused by a northerly striking dike of Tertiary quartz-feldspar porphyry with no associated mineralization. Surrounding rock appeared to be Cretaceous biotite quartz-monzonite.

Complete geologic mapping of the property and regional setting are seen in the 1981 assessment report of K. Grapes.

STRATIGRAPHIC COLUMN

Map Unit (Map 1284A)

25	TERTIARY	Quartz Porphyry
21a	CRETACEOUS	Fine to coarse grained, un-even textured biotite granodiorite and biotite quartz monzonite.
C	(METAMORPHIC)	Dark weathering greenstone and banded amphibolitic gneiss; minor chloritic quartz-mica schist, graphitic quartz-mica schist, quartzite and limestone.
A	(METAMORPHIC)	<u>Nasina Series</u> : Grey and green micaceous quartzite, dark grey light grey and silvery quartz-mica schist; minor fine grained quartz-biotite gneiss, graphitic schist and quartz-muscovite-chlorite schist.

APPENDICES

STATEMENT OF QUALIFICATIONS

I, Randall Stewart Rogers, of the City of Whitehorse, in the Yukon Territory, do hereby certify :

THAT I have been employed as a Geologist by Noranda Exploration Company, Limited (No Personal Liability) since 01 January 1980;

THAT I am a graduate of the University of British Columbia with the degree of Bachelor of Science (Honours) in Geology;

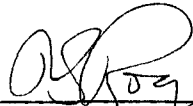
THAT I am a graduate of Queen's University at Kingston, Ontario, with the degree of Master of Science in Mineral Exploration;

THAT I am a Notary Public in and for the Yukon Territory;

THAT I am a member of the Canadian Institute of Mining and Metallurgy (Geology Section);

THAT I am a member of the Geological Association of Canada, and

THAT I am a Professional Geologist (P. Geol.) licenced under the Association of Professional Engineers, Geologists and Geophysicists of Alberta.



(RANDALL STEWART ROGERS) GEOLOGIST
NORANDA EXPLORATION CO., LTD. (NPL)

NORANDA EXPLORATION COMPANY, LIMITED

STATEMENT OF COST

PROJECT CASSIAR CREEK
TYPE OF REPORT Trenching

DATE October 1982

a) Wages:

No. of Days 19
Rate per Day \$ 80.90
Dates From: August 31, 1981 - August 31, 1982
Total Wages 19 x \$ 80.90 1,537.10

b) Food and Accomodation:

No of days 19
Rate per day \$ 19.80
Dates From: August 31, 1981 - August 31, 1982
Total Cost 19 x \$ 19.80 376.20

c) Transportation:

No of days 19
Rate per day \$ 159.44
Dates From: August 31, 1981 - August 31, 1982
Total Cost 19 X \$ 159.44 3,029.36

d) Instrument Rental:

Type of Instrument
No of days
Rate per day \$
Dates From:
Total Cost X \$

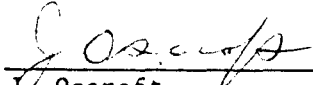
Type of Instrument
No of days
Rate per day \$
Dates From:
Total Cost X \$

f) Analysis (See attached schedule)	
g) Cost of preparation of Report	
Author	80.90
Drafting	
Typing	80.90
h) Other:	
Contractor	5,101.31
Camp & Field Supplies	209.19
	<hr/>

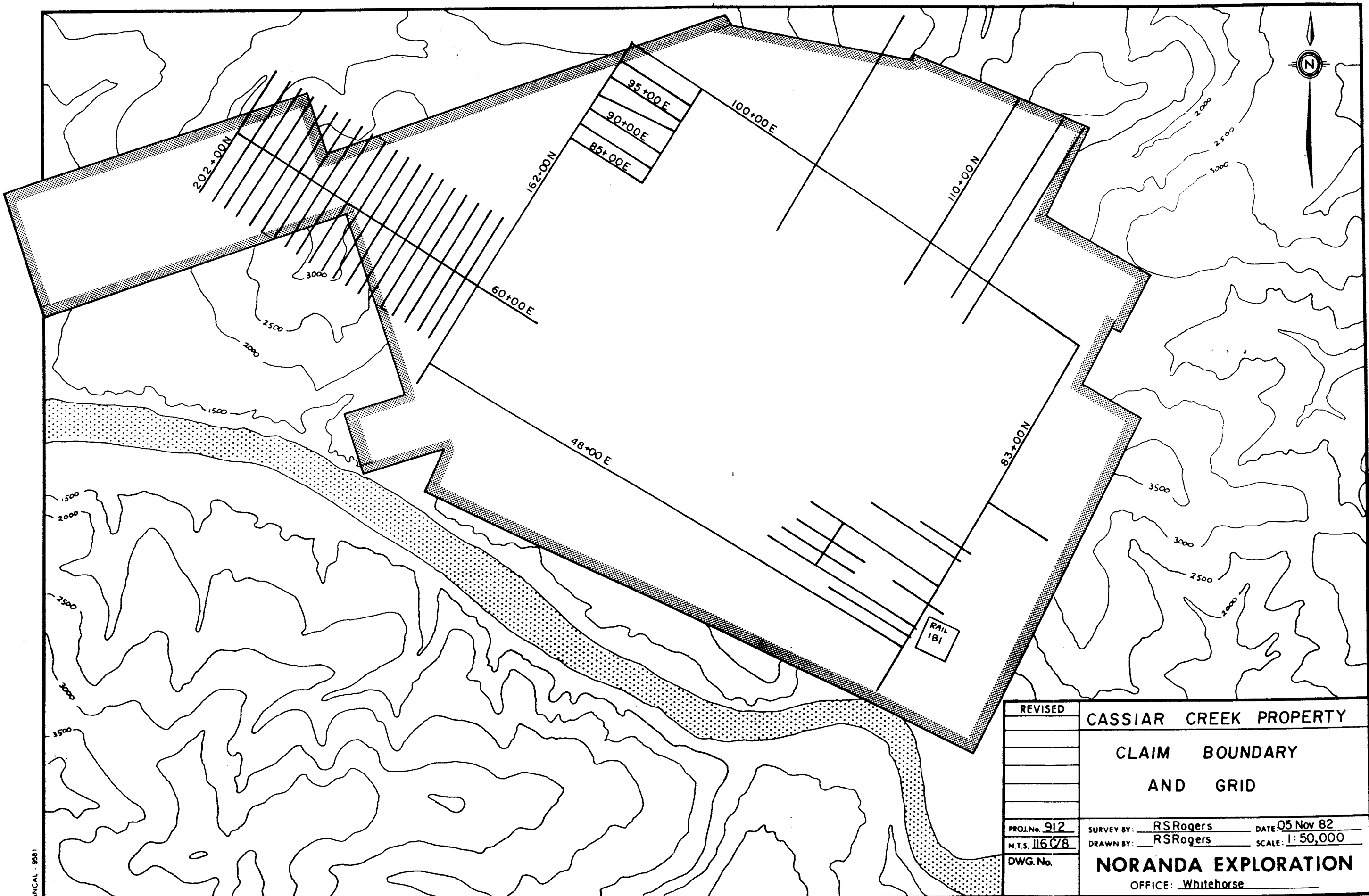
Total Cost \$10,414.96

e) Unit costs for
 No of days
 No of units
 Unit costs /
 Total Cost x

The Exploration cost of
is certified correct by



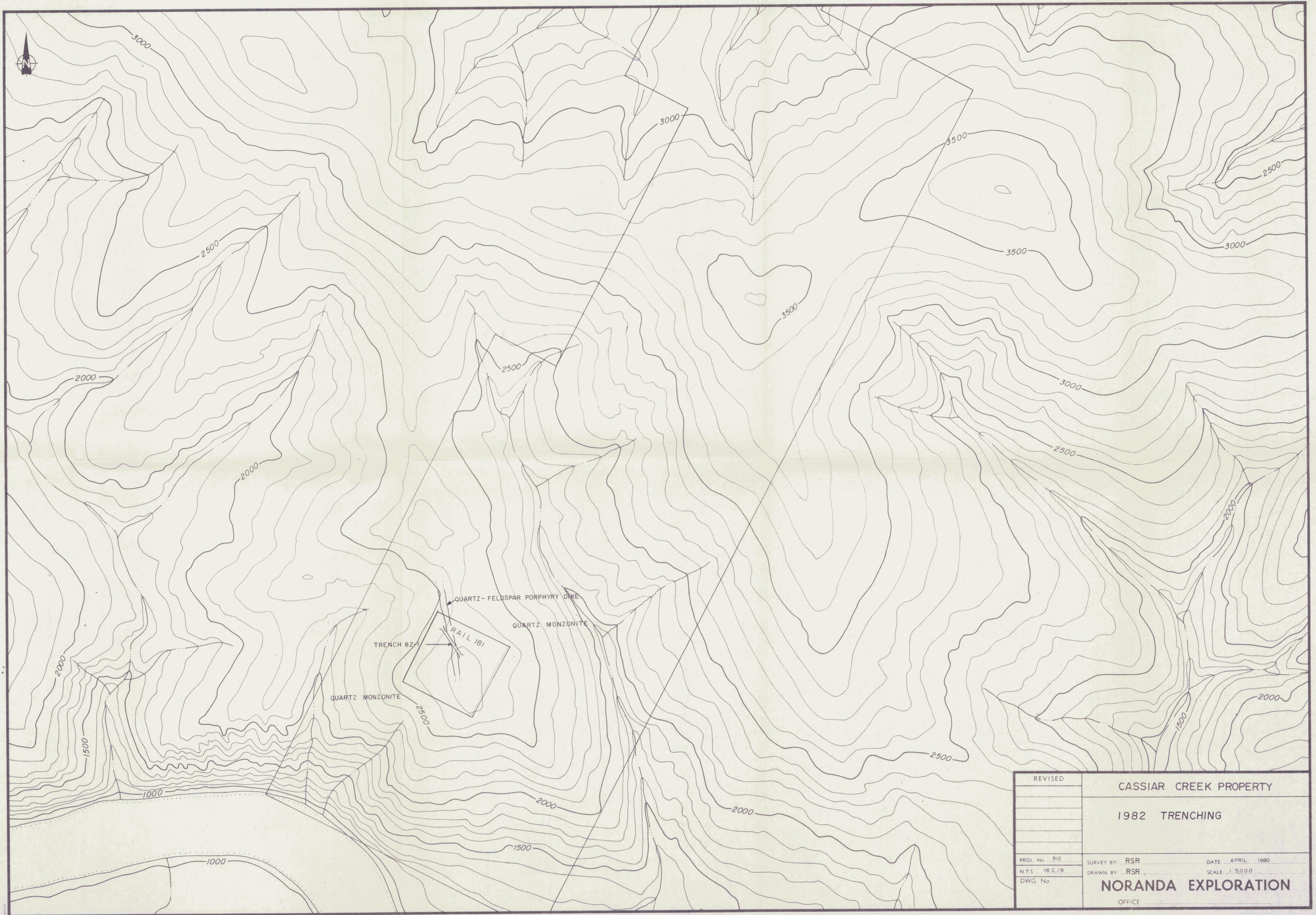
J. Oscoft
Br. Accountant



REVISED	CASSIAR CREEK PROPERTY	
	CLAIM BOUNDARY	
	AND GRID	
PROJ. No. 912	SURVEY BY: RSRogers	DATE: 05 Nov 82
N.T.S. 1:16 C/8	DRAWN BY: RSRogers	SCALE: 1: 50,000
DWG. No.	NORANDA EXPLORATION	
	OFFICE: Whitehorse	

VAN CAL 9581

PJA



091413

REVISED	CASSIAR CREEK PROPERTY	
	1982 TRENCHING	
PROJ. No. 912	SURVEY BY: RSR	DATE: APRIL 1980
N.T.S. 1/50,000	DRAWN BY: RSR	SCALE: 1:50,000
DWG. No.	NORANDA EXPLORATION	
	OFFICE	



DIAMOND DRILLING ASSESSMENT REPORT

RAIL 1 AND RAIL 2 CLAIMS

Dawson Mining District

NTS 116C/8

Noranda Exploration Company, Limited (NPL)

August 10-31, 1982

R.S. Rogers, M.Sc.

091413

3 of 3

TABLE OF CONTENTS

	<u>Page</u>
INTRODUCTION	2
DIAMOND DRILLING PROGRAM	2
DRILL LOGS	4
ASSAY DATA	12
APPENDICES :	
I Statement of Qualifications	16
II Statement of Costs	17

LIST OF FIGURES

FIGURE 1 : Location Map	1
FIGURE 2 : Drill Plan and Claim Boundaries (in pocket)	

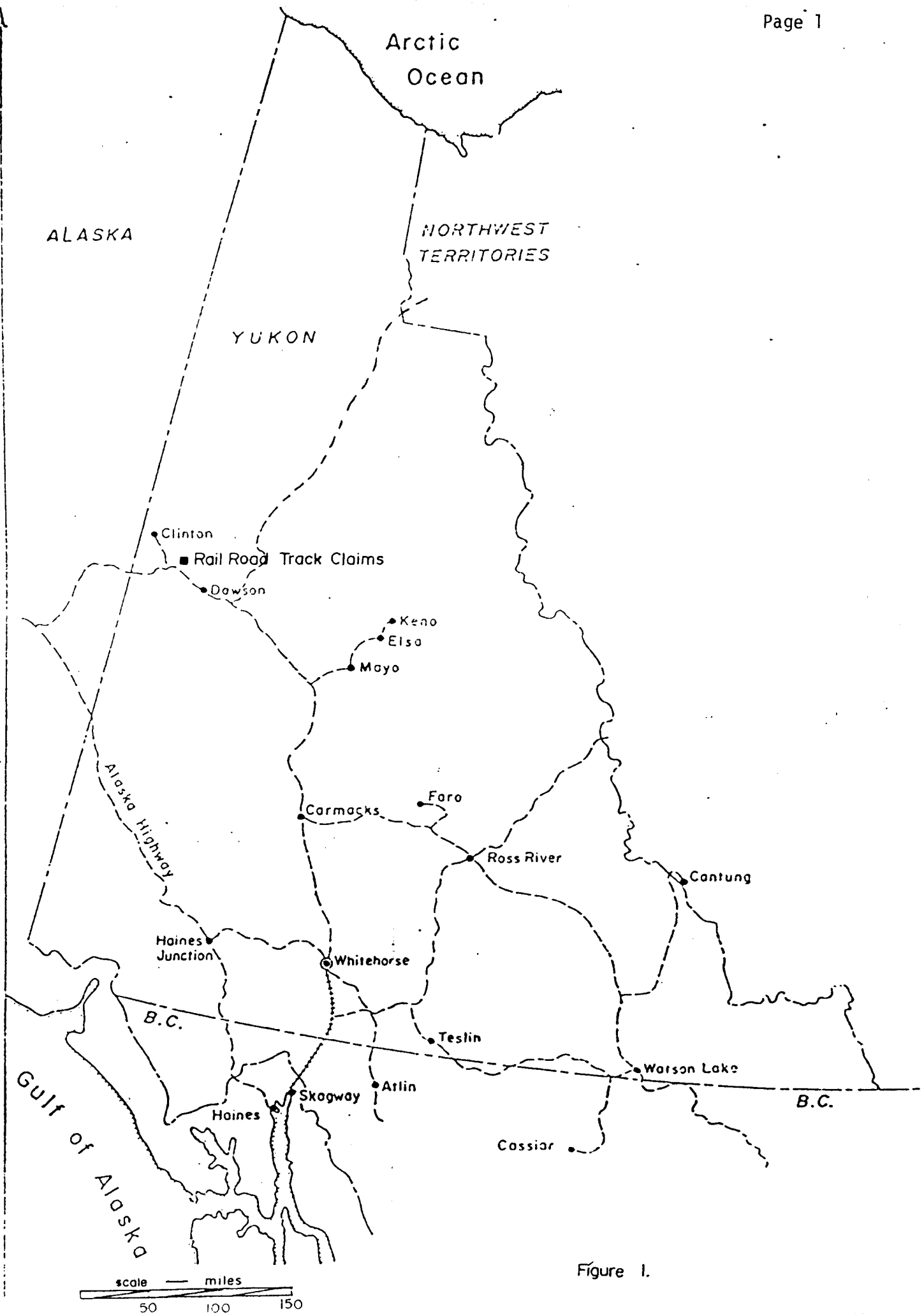


Figure 1.

INTRODUCTION :

The claims referred to in this report are registered in the name of Noranda Exploration Company Limited (No Personal Liability) and comprise the following :

Rail 1	YA32570
Rail 2	YA32571

The property is located 35 miles northwest of Dawson City, Yukon Territory, on claim sheet 116 C/8. Access in 1982 was by helicopter and river barge from Dawson City.

The 1982 program included 3 "BQ" diameter drill holes for a combined depth of 685 feet, completed between 10 August and 31 August, 1982.

DIAMOND DRILLING PROGRAM :

Drilling was contracted to E. Caron Diamond Drilling Ltd., of #7 Roundel Road, Whitehorse, Yukon Territory; who supplied a Longyear 38 series diamond drill, D6C crawler dozer and four man crew. Drilling was supervised by R.S. Rogers, M.Sc. of Noranda Exploration Co. Ltd. (NPL) assisted by Mr. G. Davidson, B.Sc.

Drill core from the 1982 program is stored on the property, excepting splits taken for assay and petrographic study.

Assay technique followed accepted analytical practice and will not be elaborated on here.

Drill logs and assay data summarize the 1982 program.

DRILL LOGS

2
4
1

NORANDA EXPLORATION COMPANY LTD.

Date Collared		Date Completed		Core Size		DIP TESTS				PROPERTY			PROJECT No. 912		N.T.S. No.			
FIELD CO-ORDINATES						DEPTH	BEARING		ANGLE		SURVEYED CO-ORDINATES						Sheet 2 of 2	
Lot.		Elev.		Dip			RECORDED	CORRECTED	RECORDED	CORRECTED	Lat.		Elev.		Dip		HOLE No. 7	
Dep.		Length		Bearing						Dep.		Length		Bearing				
From	Recovery	Graphic Log	UNIT NAME			MINERALIZATION			Structure	% Sulph.	Est. Grade	SAMPLE No.	Width	ASSAYS				
To			Description & Alteration															
77.5	90		<u>MARBLE</u>			Grey to white banded and coarsely crystalline. Small inclusion of skarn at 81.5, latter with trace scheelite.			Banding normal to core axis.									
82.0	90		<u>GARNET-DIOPSIDE SKARN MINOR PYRRHOTITE</u>			Visible scheelite and powellite throughout first 7.5 feet. Minor pyrrhotite locally. By 89.5, very garnet-rich, less scheelite. Bands of biotite schist 102.0 to 107.0.												
107.0	80		<u>QUARTZ-BIOTITE SCHIST</u>			Finely laminar meta sedimentary rock, dark green to grey. Rare bands of diopside (garnet) skarn up to 2 cm wide.			Schistosity normal to core axis.									
120.0	80		<u>QUARTZ-BIOTITE SCHIST</u>			Coarse grained, linear textured, looks like meta-intrusive as further up in hole.												
139.5	80		<u>QUARTZ-MUSCOVITE-CHLORITE SCHIST</u>			Very slightly skarnified texture fine grained with irregular stringers of coarse material throughout.												
173.0	90		<u>QUARTZ-CHLORITE (EPIDOTE) SCHIST</u>			Looks like intrusive in earlier holes, but has distinct greenish tinge. Grain size generally consistent, minor local aphanitic patches.												
282.0																		

NORANDA EXPLORATION COMPANY LTD.

Date Collared 29/8/82		Date Completed 01/9/82		Core Size BQ		DIP TESTS				PROPERTY Cassiar Creek		PROJECT No. 912		N.T.S. No. 116 C/8									
FIELD CO-ORDINATES				DEPTH	BEARING		ANGLE		SURVEYED CO-ORDINATES														
Lat. 106+20N		Elev.			RECORDED		CORRECTED		RECORDED		CORRECTED		Sheet 1 of 2		HOLE No.								
Dep. 98+63E		Length 282.0 Ft		Dip -60W		Bearing 213 ⁰		Lat. 106+10.8		Elev. 844.52		Dip		7									
From To		Recovery		Graphic Log		UNIT NAME		MINERALIZATION		Structure		% Sulph.		Est. Grade		SAMPLE No.		Width		ASSAYS			
						Description & Alteration																	
0						OVERBURDEN																	
8.0																							
8.0		60				QUARTZ-GARNET-CHLORITE SCHIST																	
12.0						Grey gneissic rock with 2mm augen of white quartz throughout. Quartz veining at 8.5, 5cm wide at 75 ⁰ to core axis.																	
12.0		60				QUARTZ-MUSCOVITE-CHLORITE SCHIST																	
18.5						Grey to green with fine linear texture. Quartz augen as above, but only to 0.5 mm in size. Very fractured looking.																	
18.5		70				QUARTZ-BIOTITE SCHIST MINOR PYRITE																	
39.5						Looks like meta-intrusive, kaolinitic partings with directed texture in biotites. Becomes more silicic to base of section. Pyrite boxwork in last 5 cm.						T											
39.5		80				QUARTZ-BIOTITE SCHIST																	
47.5						Much more finely grained and darker than above. Most likely a meta-sediment. Minor fresh aplitic dike crosscuts at 40.5.																	
47.5		90				GARNET-DIOPSIDE SKARN																	
49.0						largely pebble sized chips, crosscutting bull quartz veinlets.																	
49.0		80				QUARTZ-BIOTITE SCHIST																	
64.5						As in 39.5 to 47.5 above. Very limonitic.																	
64.5		90				GARNET-DIOPSIDE SKARN																	
77.5						Mottled red to green with minor quartz veinlets throughout. Only traces of visible scheelite.																	

DRILL LOG - 01

Date _____ Logged By _____

NORANDA EXPLORATION COMPANY LTD.

Date Collared		Date Completed		Core Size		DIP TESTS				PROPERTY		PROJECT No. 912		N.T.S. No.		
FIELD CO-ORDINATES				DEPTH	BEARING		ANGLE		SURVEYED CO-ORDINATES				Sheet 4 of 4			
Lat.		Elev.			Dip		RECORDED	CORRECTED	RECORDED	CORRECTED	Lat.		Elev.		Dip	
Dep.		Length		Bearing						Dep.		Length		Bearing		
From	Recovery	Graphic Log		UNIT NAME		MINERALIZATION		Structure	% Sulph.	Est. Grade	SAMPLE No.	Width	ASSAYS			
To				Description & Alteration												
149.0	90			<u>QUARTZ MONZONITE</u>												
159.5				Aphanitic, chloritic, biotite poor intrusive, otherwise of similar appearance to above interval. Veinlets of cryptocrystalline quartz up to 1 cm width at random angles. Grades into :												
159.5	90			<u>BIOTITE QUARTZ MONZONITE</u>												
191.5				Coarsely crystalline rock as 114.0 to 149.0 above. Grades into :												
191.5	90			<u>QUARTZ(FELDSPAR)PORPHYRY/TRACE PYRITE</u>												
195.2				Rounded grains of quartz (40%) and feldspar (5%) set in fine grained chloritic matrix of quartz, feldspar and trace pyrite. Ends in cobble breccia, grading into :												
195.2	90			<u>BIOTITE QUARTZ MONZONITE</u>												
250.0				Coarsely crystalline, fresh looking intrusive, similar to 114.0 to 149.0 above. Random pods of smoky quartz to base of interval. Kaolinitic fracture partings minor chlorite.												

NORANDA EXPLORATION COMPANY LTD.

Date Collared		Date Completed		Core Size		DIP TESTS				PROPERTY			PROJECT No. 912		N.T.S. No.						
FIELD CO-ORDINATES				DEPTH		BEARING		ANGLE		SURVEYED CO-ORDINATES				Sheet 3 of 4							
Lat.		Elev.		Dip		RECORDED		CORRECTED		RECORDED		CORRECTED		Lat.		Elev.		Dip		HOLE No. 6	
Dep.		Length		Bearing						Dep.		Length		Bearing							
From	To	Recovery	Graphic Log	UNIT NAME		MINERALIZATION		Structure		% Sulph.	Est. Grade	SAMPLE No.	Width	ASSAYS							
				Description & Alteration																	
72.0	77.8	80		QUARTZ-BIOTITE SCHIST		Mottled grey to green with moderate chlorite in fractures and minor crosscutting veinlets. More silicic to base of section, grading into :						P610	73-78/5'								
77.8	82.0	90		GARNET DIOPSIDE SKARN MODERATE PYRRHOTITE		Mottled to blotchy red garnet in diopside-tremolite tactite. Pyrrhotite increases to base of section.						P611	78-83/5'								
82.0	85.5	90		MARBLE		Coarsely crystalline marble, grey to white in colour with alternate bands of colour, rare quartz pods and lenses to 0.5cm thickness. One small chunk(6cm) of skarn enclosed in S-fold at 83.2.						P612	83-85.5/ 3'								
85.5	99.5	80		GARNET-DIOPSIDE SKARN MODERATE PYRRHOTITE		Mottled red to green coarse grained tactite. Pyrrhotite increases to 93.0, then declines. Marble inclusions at 90.0. Grades into :						P613 P614 P615	85.5- 92/6' 92-97/5' 97-102/5'								
99.5	102.0	80		QUARTZ-CHLORITE-GARNET SCHIST		Moderately skarnified banded schist green to black with fractured garnets.															
102.0	114.0	80		QUARTZ-BIOTITE SCHIST MINOR LAMINAR PYRITE		Well developed schistosity in dark grey banded rock. Quartz augen with directed texture. Chloritic brickwork, particularly in pressure shadows of augen.		fractures sub-parallel to core axis.				P916	102-107/5'								
114.0	149.0	90		BIOTITE QUARTZ MONZONITE MINOR DISSEMINATED PYRITE		Coarsely crystalline intrusive, 15% muscovite showing moderately directed texture at 80° to core axis. Random pods of smoky to grey bullquartz. Grades into :															

NORANDA EXPLORATION COMPANY LTD.

Date Collared		Date Completed		Core Size		DIP TESTS				PROPERTY			PROJECT No. 912		N.T.S. No.			
FIELD CO-ORDINATES						DEPTH	BEARING		ANGLE		SURVEYED CO-ORDINATES						Sheet 2 of 4	
Lot.		Elev.		Dip			RECORDED	CORRECTED	RECORDED	CORRECTED	Lat.		Elev.		Dip		HOLE No.	
Dep.		Length		Bearing						Dep.		Length		Bearing		6		
From	Recovery	Graphic Log	UNIT NAME			MINERALIZATION			Structure	% Sulph.	Est. Grade	SAMPLE No.	Width	ASSAYS				
To			Description & Alteration															
47.0	90		<u>QUARTZ-CHLORITE-GARNET SCHIST</u>			Slightly skarnified, mottled red garnet patches.												
50.2	80		<u>GARNET-DIOPSIDE SKARN MINOR RELICT PYRITE</u>			Blotchy red and green tactite with 1mm pyrite boxwork, crosscutting veinlets of quartz superseded by calcite stringers. Chloritic fracture fillings and as quartz veinlet selvage.				T		P604	50-55/5'					
51.8	95		<u>QUARTZ-BIOTITE SCHIST</u>			Possibly metaintrusive as above, calcareous filling in fractures, directed texture of biotite booklets.												
54.0	90		<u>GARNET-DIOPSIDE SKARN</u>			Mottled red and green tactite with suggestion of relief bedding and chloritic partings at 85° to core axis.						P605	55-57/2'					
57.0	95		<u>MARBLE</u>			Mottled grey to white limestone to marble with coarsely crystalline texture dominating. One 8cm inclusion of garnet diopside skarn at top of section. Banding 75° to core axis. Grades into:						P606	57-59/2'					
59.0	80		<u>GARNET-DIOPSIDE SKARN MODERATE PYRRHOTITE</u>			Mottled red green tactite as above. Actinolite dominates for short intervals at 66.0, 67.8 and 68.5.						P607 P608 P609	59-65/6' 65-69/4' 69-73/4'					

NORANDA EXPLORATION COMPANY LTD.

Date Collected		Date Completed		Core Size		DIP TESTS				PROPERTY		PROJECT No.		N.T.S. No.						
20/8/82		28/8/82		80		FIELD CO-ORDINATES		DEPTH		BEARING		ANGLE		SURVEYED CO-ORDINATES						
Lat. 107+10N		Elev.		Dip -60W						RECORDED		CORRECTED		RECORDED		CORRECTED		Sheet 1 of 4		
Dep. 99+10E		Length 250.0 Ft		Bearing 213						Dep. 107+09.3		Elev. 822.58		Dip		HOLE No.		6		
From	To	Recovery	Graphic Log	UNIT NAME		MINERALIZATION		Structure		% Sulph.	Est. Grade	SAMPLE No.	Width	ASSAYS						
				Description & Alteration																
0	11.0	90		<u>OVERBURDEN</u>		Pebbles of garnet-diopside skarn and limonitic quartz monzonite. Some organics to 5.0 feet.														
11.0	20.5	90		<u>QUARTZ-MUSCOVITE-CHLORITE SCHIST</u>		Limonitic grey green schistose rock, reminiscent of monzonitic intrusive chlorite and calcite fill fractures at 80° to core axis. Rare manganese wad on freshly broken surfaces.														
20.5	34.5	90		<u>QUARTZ-CHLORITE-GARNET SCHIST</u>		Slightly skarnified meta sediment rust to green in colour with irregular blotches of weathered red garnet semiconformable to banding. Sericitic and chloritic fractures subparallel to core axis.														
34.5	44.5	90		<u>QUARTZ-MUSCOVITE-CHLORITE SCHIST/MINOR CONFORMABLE</u>		Grey to green laminar schist with PYRITE irregular lenses and pods of quartz. Geothite and pyrite boxwork semi conformable at 85° to core axis. Pebbles of bull quartz at 42.0 and 42.8				T		P601 P602	35-40/5' 40-45/5'							
44.5	47.0	90		<u>QUARTZ-BIOTITE SCHIST</u>		Possibly metaintensive, grey to white with linear, directed texture to biotite booklets up to 3mm diameter at 75° to core axis.						P603	45-50/5'							

NORANDA EXPLORATION COMPANY LTD.

Date Collared			Date Completed			Core Size			DIP TESTS				PROPERTY			PROJECT No. 912		N.T.S. No.			
FIELD CO-ORDINATES						DEPTH		BEARING		ANGLE		SURVEYED CO-ORDINATES						Sheet 2 of 2			
Lat.		Elev.		Dip			RECORDED	CORRECTED	RECORDED	CORRECTED	Lat.		Elev.		Dip		HOLE No. 5				
Dep.		Length		Bearing							Dep.		Length		Bearing						
From	Recovery	Graphic Log	UNIT NAME			MINERALIZATION			Structure			% Sulph.	Est. Grade	SAMPLE No.	Width	ASSAYS					
To			Description & Alteration																		
119.0	80		QUARTZ-MUSCOVITE-GARNET SCHIST																		
122.0			Similar to above interval, but with discrete 0.5 cm bands of reddish garnet subparallel to banding.																		
122.0	80		QUARTZITE			MODERATE DISSEMINATED						2									
130.0			Grey to green orthoquartzite, PYRITE pyrite in subparallel band 1mm in thickness increasing to base of section. Grades into:																		
130.0	90+		QUARTZ-MUSCOVITE-CHLORITE SCHIST/MODERATE DISS-			EMINATED MAGNETITE															
153.0			Fairly competent schist, becoming increasingly graphitic and magnetitic to base of section. Minor magnetite throughout.																		

NORANDA EXPLORATION COMPANY LTD.

Date Collared 23/8/82		Date Completed 24/8/82		Core Size BQ		DIP TESTS				PROPERTY Cassiar Creek		PROJECT No. 912		N.T.S. No. 116 C/8	
FIELD CO-ORDINATES				DEPTH		BEARING		ANGLE		SURVEYED CO-ORDINATES				Sheet 1 of 2	
Lat 102+50N		Elev.				Dip -60 W'		RECORDED	CORRECTED	RECORDED	CORRECTED	Lat 102+49.8		Elev. -74.63	
Dep 100+58E		Length 153'		Bearing 213°						Dep 100+59.3		Length		Bearing	
From Ft.	Recovery	Graphic Log	UNIT NAME Description & Alteration		MINERALIZATION		Structure		% Sulph.	Est. Grade	SAMPLE No.	Width		ASSAYS	
0			<u>OVERBURDEN</u> Pebbles and cobbles of quartz-chlorite schist, locally limonitic; schistose, minor graphitic quartzite. Possibly "Nasima Series" or MU 3 of Green, M364.												
22.0	80		<u>QUARTZ-MUSCOVITE-CHLORITE SCHIST</u> Light grey, brickwork texture, crosscutting veinlets of yellowish calcite at 45° to core axis.				Microfaults parallel to core axis. Sense of bedding normal to core axis.								
27.0			<u>MUSCOVITE SCHIST</u> Gouge of phyllitic material, pebbles up to 1 cm diameter, limonitic throughout. Minor manganese on fracture surfaces.												
27.0	20		<u>QUARTZ-MUSCOVITE CHLORITE SCHIST/MINOR DISSEMINATED PYRITE</u> Tan to dark grey, badly sheared. random interbeds of fine-grained black shale. Pyrite appears conformable.				bedding normal to core axis.								
37.0	50		<u>SERCITE-MUSCOVITE GOUGE</u> Unconsolidated gouge of limonitic material. Rare chips of grey quartz. Dominantly silt sized particles.												
50.5	20		<u>QUARTZ-MUSCOVITE-CHLORITE SCHIST/MINOR DISSEMINATED PYRITE</u> Grey to tan, highly sheared, with rare quartzite pods.				Bedding normal to core axis.								
62.0	80		<u>MARBLE</u> Green grey and maroon marble and limestone, very sheared (in places only calcareous sludge). Rare relict quartzite pods.												
62.0			<u>QUARTZ-MUSCOVITE-CHLORITE SCHIST</u> Grey to tan, fairly competent. Minor calcite veinlets subparallel to banding.				Banding 70° to core axis.								
75.0	80														
91.0															
119.0	80														

ASSAY DATA

Rossbacher Laboratory Ltd.

GEOCHEMICAL ANALYSTS & ASSAYERS

2225 S. SPRINGER AVE.,
BURNABY, B. C.
CANADA
TELEPHONE: 299-6910
AREA CODE: 604

CERTIFICATE OF ANALYSIS

CERTIFICATE NO. 32241

TO: NORANDA EXPLORATION CO LTD.
1050 Davie St.
Vancouver, B.C.

INVOICE NO. 2232

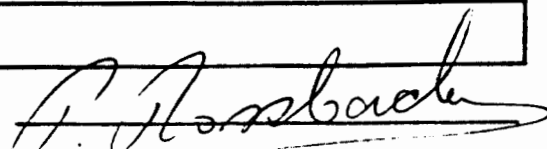
DATE RECEIVED

ATTN: 912 9-23 / 9-26 *CASSIAR CREEK R. Rogers*

DATE ANALYSED Sept 16, 1982

SAMPLE NO.:	% Cu	% T. Mo	% Sn	oz/T Au
P 601	0.01	0.001	0.01	0.002
P 602	0.01	0.001	0.01	0.001
P 603	0.01	0.001	0.01	0.002
P 604	0.13	0.002	0.01	0.002
P 605	0.54	0.004	0.01	0.002
P 606	0.07	0.001	0.01	0.006
P 607	1.14	0.013	0.01	0.002
P 608	0.12	0.003	0.01	0.004
P 609	0.34	0.003	0.01	0.003
P 610	0.01	0.001	0.01	0.004
P 611	0.15	0.003	0.01	0.001
P 612	0.01	0.001	0.01	0.003
P 613	0.42	0.005	0.01	0.004
P 614	0.01	0.001	0.01	0.002
P 615	0.01	0.001	0.01	0.002
P 616	0.01	0.001	0.01	0.002
P 617	0.02			
P 618	0.02			
P 619	0.03			
P 620	0.02			
P 621	0.04			
P 622	0.05			
P 623	0.05			
P 624	0.04			
P 625	0.38			
P 626	0.05			
P 627	0.06			
P 628	0.04			
P 629	0.02			
P 630	0.03			
P 631	0.03			
P 632	0.02			

Certified by



APPENDICES

STATEMENT OF QUALIFICATIONS

I, Randall Stewart Rogers, of the City of Whitehorse, in the Yukon Territory, do hereby certify :

THAT I have been employed as a Geologist by Noranda Exploration Company, Limited (No Personal Liability) since 01 January 1980;

THAT I am a graduate of the University of British Columbia with the degree of Bachelor of Science (Honours) in Geology;


THAT I am a graduate of Queen's University at Kingston, Ontario, with the degree of Master of Science in Mineral Exploration;

THAT I am a Notary Public in and for the Yukon Territory;

THAT I am a member of the Canadian Institute of Mining and Metallurgy (Geology Section);

THAT I am a member of the Geological Association of Canada, and

THAT I am a Professional Geologist (P. Geol.) licenced under the Association of Professional Engineers, Geologists and Geophysicists of Alberta.



(RANDALL STEWART ROGERS) GEOLOGIST
NORANDA EXPLORATION CO., LTD. (NPL)

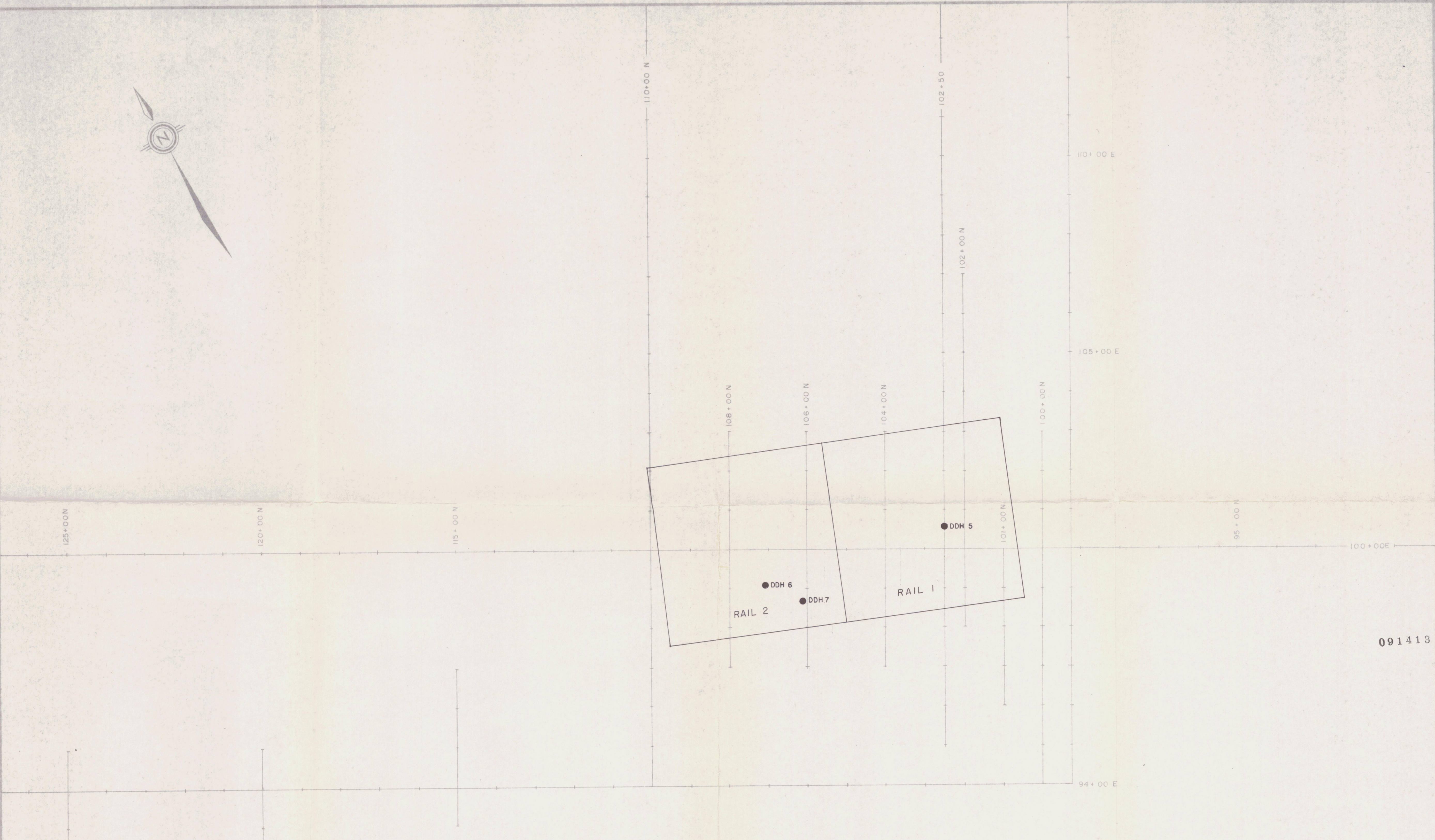
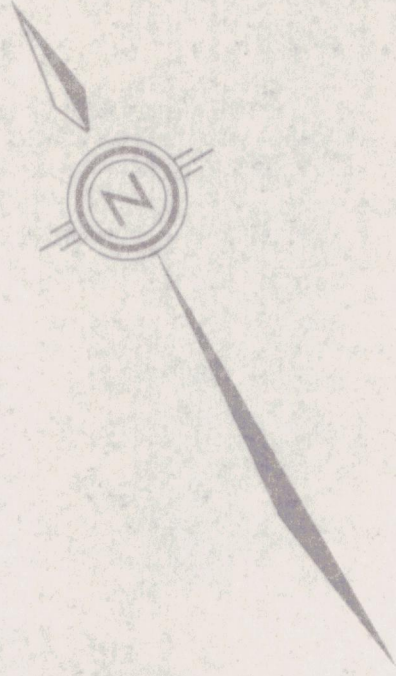
f) Analysis (See attached schedule)	
g) Cost of preparation of Report	
Author	80.90
Drafting	
Typing	80.90
h) Other:	
Contractor	26,042.99
Camp & Field Supplies	<u>1,067.79</u>

Total Cost \$52,425.36

e) Unit costs for
 No of days
 No of units
 Unit costs /
 Total Cost x

The Exploration cost of
is certified correct by


J. Oscroft
Br. Accountant



091413

REVISED	CASSIAR CREEK PROPERTY	
	PIONJAR CREEK GRID	
PROJ. No. 912	SURVEY BY R.S. ROGERS	DATE AUGUST 1982
NYE 116 C/8	DRAWN BY	SCALE 1"=5000
DWG. No.	NORANDA EXPLORATION	
	OFFICE WHITEHORSE	