

DUBLIN GULCH

1982

ASSESSMENT

DRILL LOGS & TRENCH GEOLOGY

**091387**



# BEMA INDUSTRIES LTD.

## DIAMOND DRILL LOG AND SAMPLE RECORD

HOLE NO. **DDH - 82-01** SHEET **1** OF **26**

LENGTH **287.13** metres feet

PROPERTY **DUBLIN GULCH**

LOCATION

RECOVERY

CORE SIZE **N Q**

STARTED **JULY 8**

LATITUDE **7100254.6 N**

COMPLETED **JULY 18**

DEPARTURE **464883.8 E**

### CLINOMETER TESTS

LOGGED BY **CYRILL ORSSICH**

BEARING **31°**

DEPTH (m)

OBS'D

CORR'D

AZIMUTH

CLIENT **CANADA TUNGSTEN MINING CORPORATION LTD.**

CONTRACT NO. **82-06**

ELEVATION **1184.7**

DEPTH (m)	OBS'D	CORR'D	AZIMUTH
0		-65°	31°
122 m	23°	-67°	33° Sperry - Sun
280 m	20°	-70°	32° Sperry - Sun

DEPTH (m)		LENGTH (m)	ROCK TYPE	DESCRIPTION	SAMPLE NO.	DEPTH (m)		LENGTH (m)	ASSAYS			LENGTH x ASSAY	AVERAGE ASSAY		
From	To					From	To		WO3%						
0	1.8		Overburden												
1.8	5.2		Skarn, subskarn B O S	Sections of skarn separated by sections of subskarn and B O S. 1.8-2.1 dark green skarn, blocky core, scheelite very slight. 2.1-2.7 quartzite, medium grey, massive and interlaminated quartzite and biotite schist. 2.7-3.7 subskarn with laminations of biotite schist and quartzite. A cm band of skarn with slight scheelite occurs at 3.45 3.7-3.9 dark green skarn scheelite slight 3.9-4.1 light grey quartzite 4.1-4.3 dark green skarn scheelite slight 4.3-4.4 subskarn with lamellae of biotite schist 4.4-4.7 dark green massive skarn, scheelite slight 4.7-5.2 subskarn with lamellae of skarn (trace scheelite) and biotite schist	94051	1.8	3.4		0.091						
					94052	3.4	4.8		0.011						
5.2	9.2		B O S	Light to dark grey or rusty coloured interlaminated quartzite and biotite schist with sections of skarn, subskarn and breccia	94053	4.8	8.2		0.001						



DEPTH (m)		LENGTH (m)	ROCK TYPE	DESCRIPTION	SAMPLE NO.	DEPTH (m)		LENGTH (m)	ASSAYS			LENGTH x ASSAY	AVERAGE ASSAY
From	To					From	To		WO3%				
5.2	9.2		B Q S (cont'd)	5.2-5.6 rusty coloured interlaminated quartzite and biotite schist									
				5.6-6.2 subskarn, light green laminated trace WO <sub>3</sub> at 6.1 m									
				6.2-6.4 bull quartz and B Q S									
				6.4-6.7 B Q S with bands of skarn scheelite slight									
				6.7-7.6 B Q S, quartz ribbon veinlets parallel to foliation from 7.0 to 7.5, silicified from 7.3 to 7.6									
				7.6-7.8 dark green hedenbergite skarn with white feldspar laminations and minor biotite laminations. Scheelite trace									
				7.8-8.3 BQS slightly subskarnified, with strength of subskarnification increasing towards bottom of section.									
				8.3-8.5 subskarn and skarn, mineralization moderate in 6 cm of skarn	94054	8.2	8.5		0.038				
				8.5-8.8 Fe stained quartzite	94055	8.5	11.5		≤0.001				
				8.8-9.2 B Q S, Fe stained, trace WO <sub>3</sub> at 9.1									
9.2	11.2		Fault Zone	B Q S with sections of breccia. 10.2-10.6 limonite zone with trace of scheelite at 10.3 m.									
11.2	11.5		B Q S	Medium grey interlaminated quartzite and biotite.									
11.5	11.9		Skarn	Laminated and massive hedenbergite skarn, white feldspar laminations, massive skarn from 11.55 to 11.70 has slight scheelite.	94056	11.5	11.9		0.031				
11.9	13.4		B Q S	Interlaminated quartzite and biotite with a small brecciated zone at 12.1, slight rusty staining.	94057	11.9	15.0		0.002				
13.4	13.8		Fault Zone	Breccia with large angular clasts of B Q S									
13.8	14.9		B Q S	Quartzite and biotite quartzite slightly subskarnified in sections with a 1 cm. band of skarn with slight scheelite at 14.6									



DEPTH (m)		LENGTH (m)	ROCK TYPE	DESCRIPTION	SAMPLE NO.	DEPTH (m)		LENGTH (m)	ASSAYS			LENGTH x ASSAY	AVERAGE ASSAY			
From	To					From	To		WO3%							
14.9	15.3		Skarn	Dark green, massive, hedenbergite skarn with a garnet at 15.15. Mineralization slight to fair from 15.10 to 15.25	94058	15.0	15.5		0.069							
15.3	15.6		B Q S	Interlaminated biotite and quartzite												
15.6	15.8		Skarn	Dark green massive hedenbergite skarn with slight scheelite, many small fractures throughout.	94059	15.5	18.3		0.005							
15.8	16.9		Quartzite, Fault Breccia	Rusty-grey quartzite, fault breccia from 16.6-16.9.												
16.9	18.1		Skarn	Hedenbergite skarn, intensely fractured fractures healed by calcite. Only trace scheelite throughout with 10 cm of slight scheelite at 17.5 - 17.6												
18.1	20.9		B Q S, Breccia	Predominantly interlaminated biotite and quartzite with slightly subkarnified sections and minor skarn separated by sections of fault breccia. 18.1-18.4 limonitic breccia, contains skarn fragments 18.4-19.8 B Q S, minor Fe stained, small scale kink fold 19.1-19.2 i.e. <i>f. 19.1</i> 19.8-20.9 breccia, oxidized material, trace scheelite												
20.9	24.0		B Q S	Quartzite with biotite laminations with minor sections of skarnified and subkarnified rock. 21.4 1 cm skarn, trace scheelite 22.05 1 cm skarn band, trace scheelite 22.6 - 23.1 mixed subkarn, skarn and B Q S. Trace scheelite occurs in dark green skarn between 23.0 and 23.1.												
24.0	29.4		Subkarn, skarn	Light green subkarn with sections of dark green hedenbergite skarn and minor B Q S	94060	24.0	24.35		0.073							

**BEMA INDUSTRIES LTD.****DIAMOND DRILL LOG AND SAMPLE RECORD**

HOLE NO.

SHEET 4

OF 26

DEPTH (m)		LENGTH (m)	ROCK TYPE	DESCRIPTION	SAMPLE NO.	DEPTH (m)		LENGTH (m)	ASSAYS			LENGTH x ASSAY		AVERAGE ASSAY	
From	To					From	To		WO3%						
24.0	29.4		Subskarn, skarn (cont'd)	24.0-24.3 dark green hedenbergite skarn with thin bands of B Q S, minor garnets, scheelite slight.											
				24.3-24.6 slightly subskarnified and slicified B Q S.	94061	24.35	25.15		0.015						
				24.6-24.65 hedenbergite skarn, slight scheelite											
				24.65-25.2 mixed subskarn and biotite quartzite											
				25.2-25.5 hedenbergite skarn, slight scheelite, quartz-calcite pyrrhotite veinlets cut cores at 10° to core axis.	94062	25.15	25.55		0.078						
				25.5-26.3 hedenbergite skarn, slight scheelite.	94063	25.55	26.85		0.006						
				26.3-26.85 Subskarn, minor lamellae of biotite and skarn. Trace scheelite in skarn and along quartz healed fracture											
				26.85-27.05 Hedenbergite skarn scheelite fair to slight.	94064	26.85	27.2		0.063						
				27.05-28.2 Mixed subskarn and skarn trace scheelite in skarn, quartz-calcite pyrrhotite veinlets cross cutting core at 15° to core axis have trace scheelite.	94065	27.2	28.25		0.018						
				28.2-29.4 Subskarn with one skarnified section, 5 cm thick, with trace scheelite at 28.8 m.	94066	28.25	29.1		0.001						
29.4	34.6		B Q S	Interlaminated quartzite and biotite, light grey, rusty in sections, trace scheelite at 30.0 m. Foliation to core axis angle is 80°.											
34.6	36.0		Biotite Granodiorite	Slight rusty coloured, medium grained, equigranular, granodiorite, upper contact at 30°, a quartz vein at upper contact has a bleached (leucocratic) halo in both granodiorite and biotite quartzite.											



DEPTH (m)		LENGTH (m)	ROCK TYPE	DESCRIPTION	SAMPLE NO.	DEPTH (m)		LENGTH (m)	ASSAYS			LENGTH x ASSAY			AVERAGE ASSAY		
From	To					From	To		WO3%								
36.0	40.2		B Q S, Subskarn Skarn	Interlaminated biotite and quartzite, subskarn and skarn, green-grey rusty in sections, unmineralized. Foliation to core axis angle is approximately 83°. 36.0-36.8 rusty section 37.0-37.7 interlaminated subskarn, biotite and quartzite 38.0-38.3 abundant rusty quartz 38.6-38.9 interlamination of skarn, subskarn, biotite and quartzite; rusty fracture at 15° to core axis 38.9-39.0 abundant rusty quartz 39.6-39.7 abundant quartz, slightly rusty 39.8-40.2 interlaminated skarn and subskarn with lamellae of biotite and quartzite.													
40.2	73.9		B Q S	Interlaminated quartzite and biotite, grey with rusty sections; minor sections of subskarn; minor skarn. Foliation to core axis angle ranges from approximately 80° - 90°. 42.0-42.4 rusty fracture at 15° to core axis. 42.7-42.9 abundant quartzite 43.2-44.1 rusty section; well broken up. 44.2 CAVE IN HOLE 45.1-45.7 Subskarn with minor lamellae of biotite and a 1 cm. band of unmineralized skarn; rusty fracture from 45.5 - 45.7 at angle of approximately 12° to core axis. 48.6-48.8 interlaminated subskarn and biotite and quartzite. 49.2-49.5 skarn and subskarn with interlamination of biotite and quartzite, trace scheelite in skarn at 49.4 m.													



DEPTH (m)		LENGTH (m)	ROCK TYPE	DESCRIPTION	SAMPLE NO.	DEPTH (m)		LENGTH (m)	ASSAYS			LENGTH x ASSAY		AVERAGE ASSAY		
From	To					From	To		WO3%							
40.2	73.9		B O S (cont'd)	49.5-49.85 abundant quartzite												
				50.0-50.2 interlaminated subskarn, skarn, biotite and quartzite with trace scheelite at 50.15; quartz vein cutting core axis at 18°												
				50.2-50.55 fault breccia with calcite, Mn - and Fe - stain; lower contact at angle of approximately 20° to core axis.												
				50.55-50.85 heavily fractured interlaminated biotite and quartzite with veinlets of calcite throughout; angle of calcite veins to core axis ranges from approximately 20° to 50°; foliation to core axis angle ranges from 50° - 70°.												
				50.85-51.0 breccia, fairly angular pieces, calcite present; lower contact at angle of approximately 20° to core axis.												
				51.0-51.1 interlaminated biotite and quartzite with minor lamellae of subskarn.												
				51.1-51.7 heavily fractured interlaminated biotite and quartzite; heavily oxidized Fe - and some Mn - stain; minor calcite veining and moderate quartz veining, angle of veins to core axis averages approximately 20°. Small section of breccia from 51.4 to 51.5 m.												
				52.0-52.2 rusty, interlaminated biotite and quartzite with trace scheelite at 52.1 m.												
				52.4-53.0 heavily fractured and slightly brecciated interlaminated biotite and quartzite; one section of grey-green gouge at 53.75-53.80 m.												
				54.0-54.45 well fractured interlaminated biotite and quartzite with slight to moderate calcite veining; vein to core axis angle is approximately 18°.												



DEPTH (m)		LENGTH (m)	ROCK TYPE	DESCRIPTION	SAMPLE NO.	DEPTH (m)		LENGTH (m)	ASSAYS				LENGTH x ASSAY		AVERAGE ASSAY	
From	To					From	To		WO3%							
40.2	73.9		B. Q. S. (cont'd)	54.45-55.0 breccia zone, moderately rusty, subangular to angular pieces, calcite veins at 55.0 m.												
				55.0-55.1 rusty interlaminated biotite and quartzite.												
				55.25-55.35 minor breccia with some calcite; angle of contact is approximately 8° to core axis.												
				55.35-55.6 quartz vein at angle of 12° to core axis. Biotite and quartzite become rusty at 55.45 - 55.6 m. Trace scheelite occurs at 55.6 m.												
				55.6-56.4 green-brown fault gouge												
				56.4-56.6 slightly rusty interlaminated biotite and quartzite; quartz vein at 10° to core axis; minor calcite present.												
				57.35-57.40 5 cm. band of skarn with slight scheelite.	94171	57.35	57.8		0.025							
				57.75-57.8 5 cm. band of skarn with slight scheelite.	94172	57.8	58.4		0.001							
				58.5-58.65 small band of skarn with slight scheelite at 58.6 m.	94173	58.4	58.7		0.015							
				58.7-58.8 abundant hill quartz.												
				60.4 minor gouge 1 cm. wide												
				60.4-60.8 calcite veining and moderately strong fracturing; calcite veins at angles of 20° - 45° to core axis; fractures are rusty, at angle of 40° to core axis.												
				60.9-61.0 slip fault at angle of 10° to core axis; Fe-stain and calcite present.												
				60.9-61.1 dark coloured skarn with small interbeds of biotite, veins and laminae of calcite; appears to be serpentized? trace scheelite at 60.9 m.												

**BEMA INDUSTRIES LTD.**

## DIAMOND DRILL LOG AND SAMPLE RECORD

HOLE NO.

SHEET 8 OF 26

DEPTH (m)		LENGTH (m)	ROCK TYPE	DESCRIPTION	SAMPLE NO.	DEPTH (m)		LENGTH (m)	ASSAYS			LENGTH x ASSAY		AVERAGE ASSAY		
From	To					From	To		WO3%							
40.2	73.9		B Q S (cont'd)	61.35-61.45 rusty fracture at angle of 20° to core axis.												
				61.75-62.0 fairly strong fracturing and quartz veining; veining at angles of 5 - 15° to core axis, fracturing is at various angles. Minor calcite veining.												
				62.2-62.3 bull quartz.												
				62.7-62.8 altered skarn, Fe - and Mn - stain, scheelite slight, minor serpentinization? at 62.8 m.	94174	62.45	62.75		0.022							
				63.2 minor gouge zone 2 cm. wide.												
				64.0-64.2 abundant quartzite, some clay alteration and calcite present.												
				64.6-65.0 abundant quartz.												
				65.0-65.3 rusty section, abundant quartzite, minor limonitic gouge at 65.25.												
				65.5-68.8 fault breccia and gouge; calcite present.												
				70.35-70.45 minor gouge zone.												
				71.6-72.8 fault breccia with calcite present.												
				73.0 5 cm. band of skarn, trace scheelite												
73.9	76.9		Skarn	Hedenbergite skarn with minor laminae of subskarn; overall slight mineralization, with fair sections occurring at 75.7-75.8 m and 76.15 - 76.3 m. Chloritization at 76.4 m and 76.7 m.	94175	72.9	74.4		0.002							
					94176	74.4	75.8		0.056							
					94177	75.8	76.1		0.003							
					94178	76.1	76.4		0.187							
					94179	76.4	76.9		0.016							
				76.0-76.3 fairly intense calcite veining along fractures at angle of 10° to core axis; Fe-stain.												
76.9	96.2		B Q S	Interlaminated biotite schist and quartzite, light to dark gray with rusty sections. Foliation to core axis angle averages approximately 85°.												
				77.0-77.5 heavy fracturing at angle of approximately 10° to core axis; moderate												



DEPTH (m)		LENGTH (m)	ROCK TYPE	DESCRIPTION	SAMPLE NO.	DEPTH (m)		LENGTH (m)	ASSAYS			LENGTH x ASSAY		AVERAGE ASSAY	
From	To					From	To		WO3%						
76.9	96.2		B Q S (cont'd)	brecciation; Fe-stain, some calcite present.											
				78.0-78.1 altered skarn, abundant calcite; scheelite slight to trace occurrence.											
				78.45-78.55 bull quartz.											
				78.75-79.0 bull quartz abundant											
				79.0-79.2 minor folding and bleaching along narrow quartz vein at angle of 12° to core axis.											
				79.2-79.3 bull quartz											
				79.5-79.75 fault breccia at angle of approximately 20° to core axis. Calcite present.											
				80.7-80.8 major fracture parallel to core axis, minor brecciation, slight Fe-stain.											
				81.7 5 cm. band of thinly interlaminated skarn and subskarn; unmineralized.											
				81.75-81.9 minor bleaching along narrow quartz vein at angle of 10° to core axis.											
				82.5-83.2 well fractured at angles apparently shallow to core axis Fe-stain and calcite present.											
				84.0-85.0 strong fracturing at angle of 10° to core axis; relatively heavy Fe-stain.											
				86.8-87.4 strong fracture at angle of approximately 5° to core axis; excellent, tiny quartz crystal growth along fracture; Fe-stain.											
				88.35-88.45 abundant quartz											
				88.6-88.65 bull quartz											
				88.75-88.85 bull quartz											
				91.1-91.15 bull quartz with feldspar alteration along contacts with B Q S.											
				91.4-91.7 abundant quartzite, gray-green in colour.											
				91.7-92.3 abundant quartzite, gray in colour.											
				94.0 "platy" calcite growth.											



DEPTH (m)		LENGTH (m)	ROCK TYPE	DESCRIPTION	SAMPLE NO.	DEPTH (m)		LENGTH (m)	ASSAYS				LENGTH x ASSAY		AVERAGE ASSAY		
From	To					From	To		WO3%								
96.2	96.85		Skarn	Light gray-green diopside skarn with pyrrhotite disseminated throughout and minor pyrite.  Scheelite occurs in trace amounts at 96.25 m and slight amounts at 96.35 m and 96.55 m where the skarn is darker green in colour.	94180	96.2	96.65	0.055									
96.85	104.0		B O S with Breccia	Interlaminated quartzite and biotite schist with brecciated sections. Fairly pervasive Fe-stain. Foliation to core axis angle averages 85°. 96.85-97.15 abundant quartz 97.4-98.3 abundant quartzite and quartz 98.6-101.0 brecciated zone with gouge occurring at the top and bottom of the zone. 101.1-101.8 abundant quartzite and quartz 101.8-102.1 breccia 103.5-103.6 breccia 103.6-104.0 fairly intense fracturing at angles of 8° - 20° to core axis. Calcite along some fractures.													
104.0	109.8		Graphitic Phyllite, sections of breccia	Dark gray to black graphitic phyllite with thin interlaminae of quartzite. Foliation to core axis angle averages approximately 80°. Sections of breccia present. 104.2-105.35 brecciated zone with minor Fe-stain and some calcite present. 105.6-105.8 brecciated zone. Contact at angle of approximately 55° to core axis. Fe-stain. 106.35-106.75 moderate fracturing at angles of 20° - 30° to core axis. Quartz veining and crystal growth along fractures. 106.8-107.0 breccia 107.2-107.3 breccia													



DEPTH (m)		LENGTH (m)	ROCK TYPE	DESCRIPTION	SAMPLE NO.	DEPTH (m)		LENGTH (m)	ASSAYS			LENGTH x ASSAY		AVERAGE ASSAY		
From	To					From	To		WO3%							
109.8	120.7		B Q S, minor skarn and brecciated sections	Grey interlaminated quartzite and biotite schist with minor sections of skarn and subskarn and breccia. Foliation to core axis angle ranges from 83° - 90°.												
				110.4 m trace scheelite												
				110.8 - 111.0 hedenbergite skarn with trace scheelite, minor pyrrhotite.	94181	110.8	111.1		0.006							
				112.05 - 112.35 breccia and gouge zone with calcite present.												
				113.4 - 113.5 light grey-green subskarn, slight calcite content.												
				116.9 - 117.1 minor skarn with very slight brecciation. Fe-stain and slight scheelite content. Minor pyrite.	94182	116.9	117.2		0.012							
				119.7 - 120.4 breccia and gouge zone with calcite present.												
				120.4 - 120.7 minor interbeds of skarn.												
120.7	121.4		Skarn	Dark green hedenbergite skarn with scheelite ranging from nil to moderate. Minor pyrrhotite.												
				120.8 m trace scheelite.												
				121.0 m moderate scheelite	94183	120.7	121.3		0.121							
				121.1 m fair scheelite												
				121.2 m slight scheelite and fracture at angle of 15° to core axis.												
121.4	137.4		B Q S, minor skarn and subskarn; minor graphitic phyllite	Interlaminated quartzite and biotite schist, grey in colour. Minor bands of skarn and subskarn. Minor disseminated pyrrhotite in places. Graphitic phyllite occurs in 2 small sections.												

DEPTH (m)		LENGTH (m)	ROCK TYPE	DESCRIPTION	SAMPLE NO.	DEPTH (m)		LENGTH (m)	ASSAYS			LENGTH x ASSAY		AVERAGE ASSAY			
From	To					From	To		WO3%								
121.4	137.4		B Q S, minor skarn and subskarn;	122.0-122.2 subskarn with inter-laminations of biotite schist and quartzite.													
			minor graphitic phyllite (cont)	122.55-122.7 abundant quartz with minor pyrite mineralization.													
				123.05-123.15 feldspar and quartz skarn with hedenbergite and feldspar skarn at contacts; minor pyrrhotite.													
				123.5 minor pyrrhotite mineralization.													
				123.8 1 cm band of skarn with slight scheelite, minor disseminated pyrrhotite	94184	123.7	124.0		0.007								
				124.1-124.35 minor disseminated pyrrhotite in areas of abundant quartzite and minor subskarn.													
				125.0-125.1 skarn and subskarn unmineralized.													
				125.5 m slight pyrrhotite mineralization.													
				125.85-126.0 subskarn with inter-laminations of biotite schist.													
				126.0 - 126.2 bull quartz.													
				126.3-126.35 disseminated pyrrhotite.													
				126.6-126.75 graphitic phyllite, black, with very thin bands of quartzite.													
				127.15-127.25 minor skarn interlaminated with quartzite and biotite schist as well as subskarn. Trace scheelite at 127.15 m.													
				127.4 m 3 cm. band of skarn with trace scheelite.													
				127.55-127.6 graphitic phyllite, black, with very thin bands of quartzite.													
				127.75-127.8 light green-grey subskarn thinly interlaminated with quartzite.													
				127.9-128.0 light green-grey subskarn thinly interlaminated with quartzite.													
				128.1-128.5 minor disseminated pyrite along foliation.													
				128.6 light green-gray subskarn thinly interlaminated with quartzite.													

**BEMA INDUSTRIES LTD.**

## DIAMOND DRILL LOG AND SAMPLE RECORD

HOLE NO.

SHEET 13

OF 26

DEPTH (m)		LENGTH (m)	ROCK TYPE	DESCRIPTION	SAMPLE NO.	DEPTH (m)		LENGTH (m)	ASSAYS			LENGTH x ASSAY		AVERAGE ASSAY	
From	To					From	To		WO3%						
121.4	137.4		(cont'd)	129.2 m 2 cm. band of skarn with trace scheelite.	94185	129.15	130.1		0.003						
				129.5 m 2 cm. section of light green-grey subskarn thinly interlaminated with quartzite.											
				129.7 m 2 cm. band of skarn with trace scheelite.											
				130.0 m 2 cm. band of skarn with trace scheelite.											
				130.1-130.7 well fractured zone with Fe-stain and calcite.											
				131.6-131.7 grey and limonitic gouge with calcite.											
				132.0 m minor disseminated pyrite.											
				132.25-132.6 bull quartz; calcite and Fe-stain along fracture at angle of 30° to core axis.											
				133.3-133.35 skarn with trace scheelite.											
				133.4-133.55 bull quartz											
				134.1-134.2 bull quartz with pyrite filled fracture.											
				134.25 m 1 cm. band of skarn with trace scheelite.											
				134.7-134.75 moderate pyrite mineralization in thin calcite bands.											
				135.75-135.9 bull quartz.											
137.4	146.2		B.O.S. skarn and subskarn	Grey, interlaminated quartzite and biotite schist with sections of skarn and subskarn.											
				137.4 m 1 cm. band of skarn with trace scheelite.											
				137.4-137.5 subskarn with minor inter-laminations of biotite schist.	94186	137.3	138.2		0.002						
				137.5 m 1 cm. band of skarn with trace scheelite.											

**BEMA INDUSTRIES LTD.****DIAMOND DRILL LOG AND SAMPLE RECORD**

HOLE NO.

SHEET 14

OF 26

DEPTH (m)		LENGTH (m)	ROCK TYPE	DESCRIPTION	SAMPLE NO.	DEPTH (m)		LENGTH (m)	ASSAYS			LENGTH x ASSAY	AVERAGE ASSAY			
From	To					From	To		WO3%							
137.4	146.2		B.Q.S., skarn and subskarn (cont'd)	137.65-137.75 dominantly light green subskarn with 1 cm. band of dark hedenbergite skarn at 137.7 m with trace scheelite.												
				138.2-138.55 hedenbergite skarn with slight scheelite throughout; minor disseminated pyrrhotite.	94187	138.2	138.6		0.062							
				139.45-139.6 hedenbergite skarn with slight scheelite content at 139.5 m; very minor pyrrhotite	94188	138.6	139.4		0.001							
				139.9 m 3 cm. band of dark hedenbergite skarn with scheelite in trace to slight amounts.	94189	139.4	139.9		0.013							
				139.9 m 3 cm. band of dark hedenbergite skarn with scheelite in trace to slight amounts.	94190	139.9	140.6		< 0.001							
				140.4-140.6 zoned skarn-green amphibole skarn at centre with abundant pyrrhotite, surrounded by pale green-white amphibole and feldspar skarn; feldspar increases towards contacts.	94191	140.6	141.1		0.021							
				140.65 m 2 cm. band of skarn with slight scheelite.												
				140.75 m 1 cm. band of skarn unmineralized.												
				140.75-141.0 light green subskarn with inter laminations of quartzite and biotite schist.												
				141.0-141.05 dark green hedenbergite skarn with slight scheelite.	94192	141.1	141.65		0.002							
				141.2-141.45 subskarn and quartzite.												
				141.45-141.65 hedenbergite skarn with some subskarn; unmineralized; garnet present.												
				141.65-141.75 dark green, massive hedenbergite skarn with slight scheelite, minor pyrrhotite.	94193	141.65	142.0		0.035							
				142.0 m 3 cm. band of dark, green, hedenbergite skarn with trace scheelite.	94194	142.0	142.9		0.003							
				142.5 m 1 cm. band of skarn with trace scheelite.												



DEPTH (m)		LENGTH (m)	ROCK TYPE	DESCRIPTION	SAMPLE NO.	DEPTH (m)		LENGTH (m)	ASSAYS			LENGTH x ASSAY		AVERAGE ASSAY		
From	To					From	To		WO3%							
137.4	146.2		B Q S, skarn and subskarn (cont'd)	142.55 m 1 cm. band of dark, green hedenbergite skarn with trace scheelite.												
				142.7 m 5 cm. band of skarn with slight scheelite.	94195	142.9	143.2		0.040							
				143.0-143.15 light green pyroxene skarn with 2 cm. hedenbergite skarn contacts. Slight scheelite in hedenbergite skarn with minor pyrrhotite.	94196	143.2	144.5		0.003							
				143.9 m minor pyrite.												
				143.95-144.1 hedenbergite and quartz skarn with trace scheelite at 144.05 m in 2 cm. of hedenbergite skarn.												
				144.15 m 1 cm. band of dark green hedenbergite skarn; unmineralized.												
				144.15-144.45 light, green-grey, quartz pyroxene skarn with minor pyrrhotite; unmineralized.												
				144.45-144.95 hedenbergite skarn with trace to slight scheelite, minor pyrrhotite.	94197	144.5	145.0		0.078							
				145.3 m 3 cm. of hedenbergite skarn with trace scheelite and minor pyrrhotite.	94198	145.0	145.5		0.007							
				145.55-145.75 dark green hedenbergite skarn with trace to fair scheelite minor pyrrhotite.	94199	145.5	145.85		0.145							
				145.75-145.95 light green quartz and pyroxene skarn, minor pyrrhotite unmineralized.	94200	145.85	146.2		0.030							
				145.95-146.2 dark green hedenbergite skarn, minor pyrrhotite, slight scheelite from 146.1-146.2.												
146.2	161.1		B Q S	Interlaminated quartzite and biotite schist, grey in colour. Foliation to core axis angle ranges from 75° - 85°. Minor sections of skarn and subskarn.												

**BEMA INDUSTRIES LTD.**

## DIAMOND DRILL LOG AND SAMPLE RECORD

HOLE NO.

SHEET 16

OF 26

DEPTH (m)		LENGTH (m)	ROCK TYPE	DESCRIPTION	SAMPLE NO.	DEPTH (m)		LENGTH (m)	ASSAYS			LENGTH x ASSAY		AVERAGE ASSAY		
From	To					From	To		WO3%							
146.2	161.1		B O S (cont'd)	148.75-149.2 light, grey-green pyroxene skarn alternating with quartzite and 3 bands of pyrrhotite rich skarn (one containing biotite). Scheelite ranges from trace to moderate.	36301	148.75	149.2		0.095							
				149.5 m trace scheelite in 1 cm. band of dark green actinolite skarn pyrrhotite present.												
				150.0-150.15 abundant bull quartz with 1 cm. band of biotite-pyrrhotite skarn at 150.05 m.												
				150.5-150.6 bull quartz with 3 1 cm. bands of light green amphibole subskarn.												
				150.65 m 5 cm. of banded biotite-skarn with trace scheelite.												
				150.9-151.2 abundant quartz.												
				152.15-152.2 slight scheelite in quartz rich pyroxene skarn.												
				152.2-152.3 light green skarn with interlamination of biotite schist.												
				152.7 m small scale folds.												
				152.9-153.0 dark green edenbergite skarn with slight scheelite, minor pyrrhotite												
				155.0-155.1 abundant quartz with tiny veinlets of skarn-forming minerals.												
				155.5-155.6 abundant quartz and subskarn.												
				156.2-156.35 light green diopside skarn with biotite interlamination.												
				Minor pyrrhotite; no scheelite.												
				157.0-158.0 abundant quartzite.												
				159.6-160.0 intense fracture and gouge zone with calcite.												
				160.65-161.0 abundant quartzite, somewhat oxidized, minor calcite, minor fracturing.												

**BEMA INDUSTRIES LTD.****DIAMOND DRILL LOG AND SAMPLE RECORD**

HOLE NO.

SHEET 17

OF 26

DEPTH (m)		LENGTH (m)	ROCK TYPE	DESCRIPTION	SAMPLE NO.	DEPTH (m)		LENGTH (m)	ASSAYS				LENGTH x ASSAY		AVERAGE ASSAY	
From	To					From	To		WO3%	Ag	$\frac{OZ}{T}$	AU	$\frac{OZ}{T}$			
161.1	168.7		Skarn, B O S	Sections of hedenbergite skarn separated by sections of interlaminated quartzite and biotite and subskarn.												
				161.1-161.9 mineralized hedenbergite skarn, scheelite E-M, F-S, F, S, nil, F, F, S, bull quartz-pyrite-arsenopyrite occurs at 161.45-161.55, strong chloritic alteration occurs from	94067	161.1	161.9		0.18	0.01	<0.003					
				161.3-161.4												
				161.9-162.7 subskarn, strongly chloritized with narrow sections of breccia.	94068	161.9	162.7		<0.01							
				162.7-163.0 hedenbergite skarn, scheelite fair, first 15 cm. strongly chloritized.	94069	162.7	163.05	.35	0.14							
				163.0-163.5 subskarn interlaminated with biotite-quartzite schist; bull quartz ribbons at 163.4-163.5.	94070	163.05	165.6	2.55	0.03							
				163.5-165.7 interlaminated quartzite and biotite with trace scheelite in subskarn from 164.1-164.3.												
				Brecciated zone at 164.8-165 containing calcite and euhedral pyrite and cutting core axis at 6°; a similar zone (less pyrite) occurs at 165.4-165.7.	94071	165.6	166.2	0.60	0.20							
				165.7-168.7 dark green hedenbergite	94072	166.2	166.9	0.70	0.01							
				skarn with minor narrow sections of	94073	166.9	167.2	0.30	0.18							
				subskarn, mineralization ranges from	94074	167.2	168.0	0.80	0.02							
				nil to heavy, chloritized sections occur	94075	168.0	168.4	0.40	0.15							
				from 165.7 to 165.95, 167.85 to 168.0, and 168.3 to 168.45, minor disseminated pyrrhotite at 167.1-168.0.	94076	168.4	172.5	4.1	<0.01							
168.7	171.3		Subskarn	Light green to white subskarn with many laminations of biotite and quartzite.												
171.3	172.45		B O S	Dark grey interlaminated quartzite and biotite schist. Foliation to core axis angle is 80°.												



DEPTH (m)		LENGTH (m)	ROCK TYPE	DESCRIPTION	SAMPLE NO.	DEPTH (m)		LENGTH (m)	ASSAYS			LENGTH x ASSAY	AVERAGE ASSAY		
From	To					From	To		WO3%						
172.5	179.2		Skarn	Hedenbergite skarn, massive, dark green, with sections of interlaminated subskarn and biotite quartzite.											
				172.5-173.2 hedenbergite skarn	94077	172.5	173.2	0.70	0.25	)					
				scheelite ranging from fair to heavy.					)						
				173.2-173.7 mixed subskarn, B Q S and skarn, trace scheelite.	94078	173.2	173.9	0.70	0.04	)	.139/1.7 m				
				173.7-174.2 hedenbergite skarn, scheelite trace to moderate.	94079	173.9	174.2	0.30	0.15	)					
				174.2-174.8 subskarn with interlaminated B Q S.	94080	174.2	174.8	0.60	<0.01	)					
				174.8-179.2 hedenbergite skarn, massive dark green, scheelite content ranging from nil to fair. A fairly uniformly mineralized section of slight to fair, occurs from 175.2-176.8	94081	174.8	175.2	0.40	0.07	)					
					94082	175.2	175.8	0.6	0.09	)		.109/4.4			
					94083	175.8	176.8	1.0	0.17	)	.11/2.6				
179.2	180.0		B Q S, skarn, subskarn	Thinly interlaminated biotite-andalusite schist, skarn and white subskarn, unmineralized.	94084	176.8	177.8	1.0	0.08	)	.113/4m	)	.117/3.4		
					94085	177.8	178.8	1.0	0.08	)		)	)		
					94086	178.8	179.2	0.4	0.17	)	.091/6.5	)	)		
180.0	181.7		Skarn	Medium and dark green skarn, minor subskarn at 180.3, minor B Q S at 180.6	94087	179.2	180.1	0.9	0.02	)					
				scheelite. Scheelite very slight in upper part of section, increasing to slight in lower part.	94088	180.1	180.9	0.8	0.04	)					
					94089	180.9	181.7	0.8	0.11	)					
181.7	183.75		B Q S, Skarn, Subskarn	Sections of B Q S, separated by sections of skarn and subskarn.	94090	181.7	182.75	1.05	0.02	)					
				181.7-182.0 dark grey biotite-andalusite schist, minor pyrrhotite in a quartz ribbon veinlet parallel to foliation.											
				182.0-182.2 hedenbergite skarn and subskarn mixed, scheelite slight.											
				182.2-182.5 biotite andalusite schist with abundant quartz ribbon veinlets parallel to foliation.											
				182.5-182.75 mixed hedenbergite skarn and quartz-wollastonite subskarn. Minor											

**BEMA INDUSTRIES LTD.****DIAMOND DRILL LOG AND SAMPLE RECORD**

HOLE NO.

SHEET 19

OF 26

DEPTH (m)		LENGTH (m)	ROCK TYPE	DESCRIPTION	SAMPLE NO.	DEPTH (m)		LENGTH (m)	ASSAYS			LENGTH x ASSAY	AVERAGE ASSAY				
From	To					From	To		WO3%								
181.7	183.75		B O S, Skarn	garnet in subskarn, scheelite very slight													
			Subskarn	182.75-183.1 B O S, subskarn mixed	94091	182.75	183.4	.65	<0.01								
			(cont'd)	183.1-183.4 subskarn, greenish-white, minor garnets.													
				183.4-183.75 hedenbergite skarn, scheelite slight to fair.	94092	183.4	183.75	.35	0.11								
183.75	186.0		B O S	Interlaminated quartzite and biotite schist, with sections of subskarn. B O S is dark grey and has abundant andalusite. Quartz ribbon veinlets parallel to foliation are abundant in some sections.													
				183.75-184.1 mixed subskarn and B O S subskarn is white.	94093	183.75	186.1	2.35	<0.01								
				184.7-184.8 large bull quartz vein parallel to foliation.													
				185.3-185.4 white subskarn													
				185.2-185.6 1 cm. calcite veinlet, 13° to core axis.													
				185.7-185.8 white subskarn.													
186.0	188.5		B O S, Skarn	Interlaminated quartzite and biotite andalusite schist with sections of skarn and subskarn													
			Subskarn	B O S is dark grey and has abundant quartz ribbon veinlets parallel to foliation.													
				186.0-186.1 white subskarn													
				186.1-186.2 hedenbergite skarn, slight scheelite.	94094	186.1	186.5	0.4	0.06								
				186.4-186.5 hedenbergite skarn, slight scheelite.	94095	186.5	188.5	2.0	0.01								
				187.7-187.8 white subskarn and green skarn, trace scheelite.													
				187.8-188.1 thinly interlaminated B O S and subskarn.													
188.5	189.8		Skarn	hedenbergite skarn, dark green, scheelite ranging from fair to moderate to nil.	94096	188.5	188.9	0.4	0.18	)							

**BEMA INDUSTRIES LTD.****DIAMOND DRILL LOG AND SAMPLE RECORD**

HOLE NO.

SHEET 20

OF 26

DEPTH (m)		LENGTH (m)	ROCK TYPE	DESCRIPTION	SAMPLE NO.	DEPTH (m)		LENGTH (m)	ASSAYS			LENGTH x ASSAY	AVERAGE ASSAY	
From	To					From	To		WO3%					
188.5	189.8		Skarn (cont'd)	188.9-189.1 chloritized section.	94097	188.9	189.5	0.6	0.05	)				
				189.1-189.3 interlaminations of quartzite and subskarn within skarn.						)				
					94098	189.5	189.8	0.3	0.41	)				
189.8	190.5		Skarn, Subskarn	Sections of hedenbergite skarn, and mixed B O S and subskarn.						)	.16/2 m			
				189.8-190.1 interlaminated biotite-andalusite schist and quartzite	94099	189.8	190.1	0.3	0.01	)				
				190.1-190.2 hedenbergite skarn, scheelite fair.	94100	190.1	190.5	0.4	0.23	)				
				190.2-190.3 subskarn with laminations of biotite schist.						)				
				190.3-190.5 hedenbergite skarn, scheelite fair to moderate.						)				
190.5	191.8		B O S	Dark grey interlaminated quartzite and biotite andalusite schist, slightly subskarnified zone from 191.2-191.5.						)				
191.8	192.4		Subskarn	Light green-grey subskarn with laminations of biotite quartzite.						)				
192.4	194.4		B O S	Dark grey interlaminated biotite-andalusite schist and quartzite. Two cm. section of subskarn with trace scheelite occurs at 193.4 One cm. band of skarn with slight scheelite occurs at 193.5 m.	94151	193.4	195.55		0.003	)				
194.4	196.5		Skarn, B O S	Thinly interlaminated light green skarn, dark grey biotite andalusite schist and light grey quartzite. Pyrrhotite disseminated throughout some sections of light green skarn. Light green skarn seems to occur as laminations replacing biotite schist and as ribbon veinlets parallel to the foliation. Many quartz ribbon veinlets contain skarn minerals in spots. Under the binocular microscope the skarn appears to be						)				

**BEMA INDUSTRIES LTD.****DIAMOND DRILL LOG AND SAMPLE RECORD**

HOLE NO.

SHEET 21

OF 26

DEPTH (m)		LENGTH (m)	ROCK TYPE	DESCRIPTION	SAMPLE NO.	DEPTH (m)		LENGTH (m)	ASSAYS			LENGTH x ASSAY		AVERAGE ASSAY			
From	To					From	To		WO3%								
194.4	196.5		Skarn, B O S (cont'd)	predominantly composed of a light green amphibole (possibly tremolite) and lesser pyrrhotite and diopside. 194.65 trace scheelite in light green tremolite ? skarn. 194.8 3 cm quartz veinlet, parallel to foliation with slight scheelite. 195.5 1 cm. quartz ribbon veinlet parallel to foliation containing some skarn minerals has minor scheelite.													
196.5	197.6		B O S	Interlaminated quartzite and biotite schist. Many quartz ribbon veinlets parallel to foliation. Foliation to core axis angle approximately 90°.													
197.6	202.3		Skarn, B O S	Interlaminated light to medium green skarn, biotite schist and quartzite. Similar to section from 194.4 to 196.5 except for some sections of skarn which are medium green that have varying amounts of pyroxene. Scheelite is generally more abundant in skarn containing pyroxene. 199.4-200.4 several thin bands of medium green pyroxene bearing skarn have scheelite ranging from slight to heavy. 200.4-201.6 trace scheelite occurs in light green bands of skarn. Minor pyrrhotite occurs disseminated throughout skarn. Large red garnet occurs in light green skarn at 201.55	94152	199.3	200.4	0.091									
					94153	200.4	201.6	0.011									
202.3	203.2		B Q S	Interlaminated biotite andalusite schist and quartzite, dark grey.													
203.2	204.4		Diopside - Actinolite	Interlaminated tremolite-actinolite skarn and biotite schist. Minor disseminated pyrrhotite Minor scheelite at 203.7, 204.0, 204.1	94154	203.9	204.3	0.007									

Skarn, B Q S

**BEMA INDUSTRIES LTD.****DIAMOND DRILL LOG AND SAMPLE RECORD**

HOLE NO.

SHEET 22 OF 26

DEPTH (m)		LENGTH (m)	ROCK TYPE	DESCRIPTION	SAMPLE NO.	DEPTH (m)		LENGTH (m)	ASSAYS				LENGTH x ASSAY		AVERAGE ASSAY	
From	To					From	To		WO3%							
204.4	206.5		B O S	Interlaminated biotite-andalusite schist and quartzite. 204.8 calcite, chlorite, pyrite ribbon veinlet 2 cm. thick, beside 5 cm. tremolite-actinolite skarn with trace scheelite. 205.0-205.2 broken rusty stained quartzite. 206.25-206.4 hull quartz.												
206.5	207.5		Subskarn	Light green to white subskarn.												
207.5	209.0		B O S	Dark grey interlaminated quartzite and biotite schist with some interlaminated subskarn from 207.9 to 208.2												
209.0	210.7		B O S, Skarn Marble	Interlaminated quartzite, biotite schist and tremolite-actinolite skarn with sections of marble and ribbon veinlets of quartz, calcite, diopside-actinolite, pyrrhotite parallel to foliation. 209.0-209.15 light grey marble. 209.4-209.6 quartz veins rimmed with diopside. Rim is 2 mm. thick. 210.0-210.15 light grey marble. 210.3 calcite, diopside pyrrhotite quartz veinlet 2-3 cm. thick parallel to foliation. 210.35-210.7 light green-grey marble												
210.7	214.6		Skarn, B O S	Thinly interlaminated biotite schist, tremolite-actinolite skarn and quartzite with a few small sections of hedenbergite skarn. B O S is dark green, actinolite skarn is medium green-grey. Few quartz diopside actinolite ribbon veinlets. 210.95 trace scheelite in diop-act. skarn. 211.35 trace scheelite in diop-act. skarn												

**BEMA INDUSTRIES LTD.****DIAMOND DRILL LOG AND SAMPLE RECORD**

HOLE NO.

SHEET 23

OF 26

DEPTH (m)		LENGTH (m)	ROCK TYPE	DESCRIPTION	SAMPLE NO.	DEPTH (m)		LENGTH (m)	ASSAYS			LENGTH x ASSAY		AVERAGE ASSAY		
From	To					From	To		WO3%							
210.7	214.6		Skarn, B O S (cont'd)	211.7 trace scheelite in diop-act. skarn 212.75 trace WO <sub>3</sub> in skarn veinlet. 213.8 trace WO <sub>3</sub> in skarn veinlet and in chloritized lamination at skarn. 214.0 5 cm. band of bedenbergite skarn with disseminated pyrrhotite and fair scheelite. 214.1-214.2 and 214.4-214.5 bull quartz veins parallel to foliation. 214.5-214.6 medium green diopside-actinolite skarn with minor pyrrhotite cut by a chlorite filled fracture.	94155	213.75	214.1	0.071								
214.6	215.5		B O S	Dark grey to black interlaminated biotite andalusite schist and quartzite. Foliation to core axis angle is 57°.												
215.5	219.7		B O S, Diopside Actinolite Skarn	Predominantly quartzite with interlamination of diopside-actinolite? skarn and biotite schist. Bull quartz is abundant from 216.9 to 218.3. 216.25 diopside skarn in quartz has slight scheelite. 219.5-219.6 fractures healed with pyrite, sphalerite, calcite.	94156 94157	216.1 218.8	216.4 219.2	0.010 0.044								
219.7	224.0		B O S	Interlaminated quartzite and biotite schist, quartz ribbon veinlets parallel to foliation are abundant. Foliation to core axis angle is 85°.												
224.0	225.6		Trem-Act. Skarn Biotite Schist Fault Gouge	Interlaminated light to medium green diopside-actinolite? skarn and biotite schist with sections of light green gouge. Whole section is rather broken up and altered.												
225.6	236.5		Subskarn, BQS Skarn	Interlayered subskarn, quartzite and biotite schist with sections of medium green pyroxene												

**BEMA INDUSTRIES LTD.****DIAMOND DRILL LOG AND SAMPLE RECORD**

HOLE NO.

SHEET 24

OF 26

DEPTH (m)		LENGTH (m)	ROCK TYPE	DESCRIPTION	SAMPLE NO.	DEPTH (m)		LENGTH (m)	ASSAYS			LENGTH x ASSAY		AVERAGE ASSAY	
From	To					From	To		WO3%						
225.6	236.5		Subskarn, BOS Skarn (cont'd)	skarn. Quartz and diopside-actinolite ribbon veinlets parallel to foliation and bands of diopside-actinolite? skarn occur throughout section. 226.5 trace scheelite in band on trem. - actinolite skarn. 226.95 slight scheelite in 1 cm. band of trem.-act. garnet skarn. 227.2-227.3 medium green hedenbergite skarn, scheelite fair. 228.65-228.75 2 small bands of hedenbergite skarn, scheelite fair. 228.1 1 cm. band of epidote. 228.9 trace scheelite in light green diopside skarn. 229.6 trace scheelite. 231.15-231.4 medium green pyroxene skarn, scheelite trace to slight with a diopside-actinolite-quartz veinlet with fair scheelite cutting core at 60° at 231.4 232.3-232.6 medium green pyroxene skarn, scheelite slight to fair, diopside-actinolite ribbon veinlet parallel to foliation at 232.5 with fair scheelite.											
					94158	226.9	227.3		0.040						
					94159	227.3	228.6		0.005						
					94160	228.6	228.95		0.016						
					94161	228.95	231.0		0.001						
					94162	231.0	231.3		0.159						
					94163	231.3	232.3		0.002						
					94164	232.3	232.65		0.112						
236.5	241.1		B O S, Skarn	Interlaminated quartzite and biotite schist with a few sections of hedenbergite skarn. Many quartz ribbon veinlets parallel to foliation. Foliation to core axis angle is about 80°. Sections of hedenbergite skarn occur at 238.1-238.15 slight scheelite 238.9-239.0 slight scheelite 239.1-239.55 fair scheelite 239.9-240.1 slight scheelite, much core loss. 239.3-242.3 75% core recovery											
					94165	238.1	238.9		0.006						
					94166	238.9	239.6		0.137						
					94167	239.6	241.1		0.008						

**BEMA INDUSTRIES LTD.**

## DIAMOND DRILL LOG AND SAMPLE RECORD

HOLE NO.

SHEET 25

OF 26

DEPTH (m)		LENGTH (m)	ROCK TYPE	DESCRIPTION	SAMPLE NO.	DEPTH (m)		LENGTH (m)	ASSAYS			LENGTH x ASSAY		AVERAGE ASSAY	
From	To					From	To		WO3%						
241.1	243.9		B O S	Interlaminated quartzite and biotite schist, several quartz filled fractures. 241.2-241.6 narrow brecciated zone sub-parallel to core axis with euhedral quartz crystals lining the walls of vugs. 241.9-242.1 1 cm. veinlet with vugs lined with euhedral quartz crystals. 242.35 trace scheelite in veinlet of euhedral quartz. 242.6-243.3 veinlet subparallel to core axis. Abundant open spaces lined by euhedral quartz.											
243.9	244.5		Subskarn, BOS Skarn	Interlaminated subskarn, quartzite, biotite schist and minor light green diopside actinolite skarn with trace scheelite. 244.2 2 cm. diopside actinolite skarn with trace scheelite. 245.0 2 cm. diopside actinolite skarn trace scheelite. 245.15-245.3 medium green pyroxene skarn, slight scheelite. 245.3 quartz vein, slight scheelite. 245.4 dark green hedenbergite skarn, trace scheelite.	94168	245.0	245.55	0.035							
244.5	256.7		B O S	Quartzite with laminations of biotite, some sections have abundant quartz ribbon veinlets parallel to foliation. 247.0 1 cm. chlorite veinlet parallel to foliation. 247.1 5 cm. quartz veinlet with minor diopside actinolite and pyrrhotite. 249.8 tremolite-actinolite-chlorite veinlets 254.2-255.0 quartz chlorite biotite veinlets 256.3-256.7 bleached B O S											



DEPTH (m)		LENGTH (m)	ROCK TYPE	DESCRIPTION	SAMPLE NO.	DEPTH (m)		LENGTH (m)	ASSAYS				LENGTH x ASSAY		AVERAGE ASSAY		
From	To					From	To		WO3%	Ag	Au						
256.7	257.6		Subskarn	Interlaminated light green subskarn, white													
			Biotite-quartz	biotite quartz-plagioclase skarn, medium													
			Plagioclase	green diopside skarn and quartz diopside vein													
			Skarn	parallel to foliation. Slight scheelite from 257.25-257.45.	94169	257.2	257.5		0.040								
257.6			B Q S	Interlaminated quartzite and biotite schist. Light to medium grey. Some quartz ribbon veinlets parallel to foliation. Foliation to core axis angles 70°, 72°, 88°, 77°. Quartzite is more massive from 267.6 to 271.4 and 272.7 to 273.5. 274.0-278.8 moderately fractured zone. Chlorite and light green carbonate occur as a film on fractures. A 5 cm. arsenopyrite siderite vein cross cutting core axis at 58° occurs at 277.75 and has an envelope of light green sericitized rock for about 30 cm. to either side.													
					94170	277.75	277.85		0.04 <sup>OZ</sup> <sub>TON</sub>		0.028 <sup>OZ</sup> <sub>TON</sub>						
284.3	285.9		Subskarn, BQS	Interlaminated subskarn and B Q S. 284.9-285.4 2 cm. calcite veinlet cutting core at about 8°.													
285.9	287.13		B Q S	Light to medium grey interlaminated quartzite and biotite schist.													
				END OF HOLE													



# BEMA INDUSTRIES LTD.

## DIAMOND DRILL LOG AND SAMPLE RECORD

HOLE NO. 82-02 SHEET 1 OF 19

LENGTH 225.25 metres 739 feet

PROPERTY DUBLIN GULCH

LOCATION

RECOVERY

CORE SIZE N Q

STARTED JULY 19, 1982

LATITUDE 7100100.ON

CLIENT CANADA TUNGSTEN MINING CORPORATION LTD.

COMPLETED JULY 24, 1982

DEPARTURE 465137.1E

### CLINOMETER TESTS

LOGGED BY C. ORSSICH

BEARING

DEPTH (m)

OBS'D

CORR'D

AZIMUTH

CONTRACT NO. 82-06

J. DONNELLY

ELEVATION 1094.2

0

65°

31°

225 m

22°

68°

28°

Sperry - Sun

DEPTH (m)		LENGTH (m)	ROCK TYPE	DESCRIPTION	SAMPLE NO.	DEPTH (m)		LENGTH (m)	ASSAYS				LENGTH x ASSAY		AVERAGE ASSAY	
From	To					From	To		WO3%							
0	4.57		Overburden													
4.57	18.2		B Q S	Interlaminated quartzite and biotite schist. Slight rusty stain on rock. Many quartz ribbon veinlets parallel to foliation. Foliation to core axis angle, 68°, 77°, 84°, 77°. 4.9-5.5 bull quartz vein, contact at 70° to core axis. 10.4-10.6 limonitic breccia, 30° to core axis. 16.7-16.9 green-white subskarn												
18.2	19.5		Subskarn, Skarn	White to light green subskarn with narrow sections of hedenbergite skarn at: 18.2 3 cm. band, slight scheelite 18.35 2 cm. band, slight scheelite 18.7-18.8 slight scheelite 19.3 5 cm. band, trace scheelite 19.4-19.45 slight scheelite	36251	18.2	19.5		0.014							
19.5	54.05		B Q S, Lesser Skarn and Subskarn	Predominantly interlaminated quartzite and biotite schist with the odd section of skarn and subskarn. 20.2-21.8 light grey gritty quartzite, 2 mm sized grains of quartz and feldspar elongated parallel to foliation. 26.65-26.9 white to light green subskarn												

**BEMA INDUSTRIES LTD.****DIAMOND DRILL LOG AND SAMPLE RECORD**

HOLE NO.

SHEET 2

OF 19

DEPTH (m)		LENGTH (m)	ROCK TYPE	DESCRIPTION	SAMPLE NO.	DEPTH (m)		LENGTH (m)	ASSAYS			LENGTH x ASSAY		AVERAGE ASSAY			
From	To					From	To		WO3%								
19.5	54.05		B Q S, Lesser	28.25-28.35 hedenbergite skarn, scheelite	36252	28.1	28.4		0.031								
			Skarn and	slight to fair.	36253	28.4	29.1		0.001								
			Subskarn	28.4 small scale folds													
			(cont'd)	29.1-5 cm. band of hedenbergite skarn	36254	29.1	29.6		0.050								
				scheelite slight.													
				29.3-29.55 two sections of skarn separated													
				by 7 cm of subskarn.													
				Scheelite skarn is fair.	36255	29.6	30.35		0.001								
				30.35-30.6 hedenbergite skarn, slight	36256	30.35	30.65		0.029								
				scheelite.													
				30.6-30.8 light green and white subskarn													
				33.1 4 cm. skarn scheelite slight	36257	30.65	33.0		0.002								
				33.5-33.6 hedenbergite skarn, scheelite fair	36258	33.0	33.6		0.015								
				foliation to core axis angle approx. 80°	36259	33.6	35.0		0.001								
				35.0-35.1 hedenbergite skarn, slight scheelite													
				35.45-36.0 hedenbergite skarn, scheelite	36260	35.0	36.05		0.029								
				ranging from slight to fair.													
				39.75-39.9 skarn and subskarn, trace to	36261	39.7	40.0		0.017								
				slight scheelite.													
				50.2-50.4 hedenbergite skarn, scheelite	36262	49.8	50.45		0.060								
				slight to fair.													
				50.5-53.9 Fe stained quartzite													
				51.95 4 cm. hedenbergite skarn, slight	36263	51.8	52.1		0.017								
				scheelite.													
54.05	57.3			Sections of light grey marble, hedenbergite													
				skarn, and interlaminated quartzite and biotite													
				schist. Marble composed predominantly of													
				calcite.													
				54.05-54.2 marble													
				54.2-54.3 B Q S													
				54.3-54.65 marble													
				55.15-55.22 marble, epidote along upper													
				contact with B Q S.													
				55.22-55.27 subskarn with abundant garnet.	36264	55.25	55.95		0.015								
				55.27-55.45 hedenbergite skarn, slight													
				scheelite.													

**BEMA INDUSTRIES LTD.**

## DIAMOND DRILL LOG AND SAMPLE RECORD

HOLE NO.

SHEET 3 OF 19

DEPTH (m)		LENGTH (m)	ROCK TYPE	DESCRIPTION	SAMPLE NO.	DEPTH (m)		LENGTH (m)	ASSAYS			LENGTH x ASSAY		AVERAGE ASSAY			
From	To					From	To		WO3%								
54.05	57.3		(cont'd)	55.45-55.55 marble													
				55.55-55.8 B Q S													
				55.8-55.95 hedenbergite skarn, slight scheelite.	36265	55.95	57.0		0.001								
				56.0-56.35 marble													
				56.45-56.6 hedenbergite skarn, trace scheelite.													
				57.05-57.1 light green grey diopside skarn	36266	57.0	57.3		0.024								
				57.2-57.3 hedenbergite skarn, slight scheelite.													
57.3	69.7		B O S	Medium grey interlaminated quartzite and biotite-muscovite schist. Foliation to core axis angle approximately 79°.													
				65.3-66.2 Fractures at to ° to core axis healed by siderite and calcite													
69.7	72.35		Graphitic Phyllite, Quartzite	Two sections of dark grey to black graphitic phyllite separated by a section of rusty quartzite and minor biotite quartzite. Foliation to core axis angle approx. 85°.													
				69.7-70.4 graphitic phyllite													
				70.4-71.9 rusty quartzite													
				71.9-72.35 graphitic phyllite													
72.35	76.0		Quartzite	Predominantly quartzite, some sections slightly graphitic. Minor sections of skarn and bull quartz.													
				72.8 4 cm. band of hedenbergite skarn, trace scheelite, a band of plagioclase and pyrite occurs at the lower contact.													
				72.95 2 cm. band of hedenbergite skarn rimmed on both sides by plagioclase with minor pyrite.													
				73.0-73.10 several small bands of epidote.													
				73.5-73.6 graphitic phyllite													

**BEMA INDUSTRIES LTD.****DIAMOND DRILL LOG AND SAMPLE RECORD**

HOLE NO.

SHEET 4 OF 19

DEPTH (m)		LENGTH (m)	ROCK TYPE	DESCRIPTION	SAMPLE NO.	DEPTH (m)		LENGTH (m)	ASSAYS			LENGTH x ASSAY	AVERAGE ASSAY				
From	To					From	To		WO3%								
72.35	76.0		Quartzite (cont'd)	75.0-75.2 2 cm. band of plagioclase followed by 6 cm. of light green-grey diopside skarn with disseminated pyrrhotite followed by 3 cm. quartzite and light grey marble composed of predominantly calcite. 75.8-76.0 bull quartz, contacts parallel to foliation at about 80° to core axis.													
76.0	82.9		Graphitic Phyllite	Dark grey to black quartz-graphite phyllite. Rather homogeneous section, minor quartz lenses parallel to foliation, minor isoclinal folds outlined by interlamination of graphite and quartz. Gleitbrett cleavage occurs also.													
82.9	85.0		B O S. Minor Skarn	Quartzite with thin biotite laminations and sections of skarn. Quartzite is light grey. 83.15-83.25 dark green hedenbergite skarn, scheelite slight. 83.5-83.6 hedenbergite skarn minor subskarn, scheelite trace. 84.95 2 cm. of interbanded epidote garnet and plagioclase skarn.	36267	83.15	83.7		0.015								
85.0	88.1		Graphitic Phyllite	Homogeneous section of graphitic phyllite. Large quartz lenses parallel to foliation, same as last section of graphitic phyllite.													
88.1	94.8		Subskarn, Skarn, B O S	Predominantly light green subskarn with sections of biotite quartzite, dark green hedenbergite skarn and light green plagioclase? diopside skarn with disseminated pyrrhotite. 88.25-88.30 medium green diopside skarn with disseminated pyrrhotite and trace scheelite. 88.30-88.4 bull quartz with a pod of skarn minerals and pyrrhotite. Contacts parallel to foliation.													

**BEMA INDUSTRIES LTD.****DIAMOND DRILL LOG AND SAMPLE RECORD**

HOLE NO.

SHEET 5 OF 19

DEPTH (m)		LENGTH (m)	ROCK TYPE	DESCRIPTION	SAMPLE NO.	DEPTH (m)		LENGTH (m)	ASSAYS			LENGTH x ASSAY	AVERAGE ASSAY			
From	To					From	To		WO3%							
88.1	94.8		Subskarn, Skarn, B O S (cont'd)	88.8 4 cm. band of plagioclase? diopside skarn with disseminated pyrrhotite and trace scheelite.												
				89.2-90.3 abundant bull quartz with plagioclase, hedenbergite and pyrrhotite. 1 cm. band of hedenbergite skarn at 90.0	36268	89.8	90.1		0.008							
				90.3-91.2 dark grey quartzite with laminations of sericite and biotite.												
				91.2-91.4 barren quartz vein, contact 65° to core axis.												
				91.4-92.3 mixed quartz, plagioclase pyroxene and dark green amphibole skarn.												
				A 5 cm. band of very dark green coarse grained amphibole with pyrrhotite and calcite occurs at 91.75. Calcite occurs in the middle of this band and euhedral amphibole crystals project into the calcite. A band of epidote rich skarn occurs on the lower contact of the amphibole zone. The remainder of this section is composed of a lighter coloured pyroxene with abundant quartz and plagioclase.												
				92.3-92.6 quartzite with biotite laminations and a 2 cm. band of skarn at 92.45 with trace scheelite.	36269	92.4	92.8		0.020							
				92.6-92.7 hedenbergite skarn, slight scheelite; abundant pyrrhotite.												
				92.7-93.8 subskarn with a section of quartz from 92.9-93.1												
				93.8-94.3 mixed hedenbergite, plagioclase and amphibole skarn. A crude zoning exists. At 94.15 a pod of hedenbergite and calcite are rimmed by coarse crystalline amphibole and the whole thing occurs within a zone of plagioclase.	36270	93.8	94.3		0.034							
				94.3-94.8 interlaminated subskarn and BOS.												

**BEMA INDUSTRIES LTD.****DIAMOND DRILL LOG AND SAMPLE RECORD**

HOLE NO.

SHEET 6

OF 19

DEPTH (m)		LENGTH (m)	ROCK TYPE	DESCRIPTION	SAMPLE NO.	DEPTH (m)		LENGTH (m)	ASSAYS			LENGTH x ASSAY		AVERAGE ASSAY	
From	To					From	To		WO3%						
94.8	99.2		B Q S, Minor Skarn and Graphitic Phyllite	Predominantly quartzite with interlamination of biotite and sections of hedenbergite skarn graphitic phyllite and bull quartz. Quartzite has abundant quartz ribbon veinlets parallel to foliation. Foliation to core axis angle is about 83°.											
				96.3-96.5 quartz vein at 60° to core axis.											
				96.6-97.25 hedenbergite skarn, slight scheelite, fractured, slightly chloritized.	36271	96.7	97.25		0.058						
				97.6-97.7 hedenbergite skarn, scheelite slight	36272	97.5	97.8		0.023						
				98.15-98.60 graphitic phyllite with many quartz ribbon veinlets parallel to foliation.											
				98.8-99.2 graphitic phyllite same as above.											
99.2	117.8		B Q S	Interlaminated quartzite and biotite schist with a few minor sections of subskarn and very minor skarn. Foliation to core axis angle ranges from 75° - 85°.											
				99.15 minor pyrite in quartz veins and along foliation.											
				100.5-100.6 minor pyrite											
				101.0 m minor pyrite and pyrrhotite.											
				101.3 m 3 cm. section of light green-grey quartz subskarn.											
				102.45-102.75 strong fracturing at angle of 10° to core axis with calcite filling.											
				102.75-103.2 minor calcite veining.											
				104.1-104.2 bull quartz with substantial pyrrhotite.											
				104.95 1 cm. of epidote skarn.											
				105.0-105.05 pale green pyroxene and feldspar skarn with minor pyrrhotite.											
				105.1-105.25 minor skarn and subskarn interlaminated with biotite schist and quartzite.											

**BEMA INDUSTRIES LTD.****DIAMOND DRILL LOG AND SAMPLE RECORD**

HOLE NO.

SHEET 7

OF 19

DEPTH (m)		LENGTH (m)	ROCK TYPE	DESCRIPTION	SAMPLE NO.	DEPTH (m)		LENGTH (m)	ASSAYS			LENGTH x ASSAY	AVERAGE ASSAY			
From	To					From	To		WO3%							
99.2	117.8		B O S (cont'd)	106.75-107.35 fracturing at angles of 15° to core axis. Fe-stain and calcite along fractures.												
				108.45 minor pyrrhotite in quartz sweats with minor skarn forming minerals.												
				108.75 4 cm. band of interlaminated subskarn and biotite schist.												
				109.6-109.8 fracture at angle of 15° to core axis. Fe-stain and calcite along fracture.												
				110.3-110.4 quartz, feldspar, diopside subskarn; unmineralized.												
				110.45-110.9 quartz, feldspar diopside subskarn interlaminated with biotite schist.												
				111.25 m 1 cm. band of interlaminated skarn and subskarn; unmineralized.												
				111.5 m 2 cm. band of skarn; unmineralized.												
				111.95 m 5 cm. zone of epidote skarn.												
				112.4-112.65 medium green diopside skarn with trace to slight scheelite.												
				113.0-113.2 calcite veining at angle of 15° to core axis.												
				114.0 1 cm. band of subskarn.												
				115.4-115.5 abundant bull quartz, minor skarn forming minerals.												
				115.95 3 cm. band of quartz and light green skarn; no scheelite; minor pyrrhotite.												
				116.5-116.6 abundant quartzite.												
				116.85-116.9 abundant quartzite.												
				117.5-117.8 moderate calcite veining.												

**BEMA INDUSTRIES LTD.****DIAMOND DRILL LOG AND SAMPLE RECORD**

HOLE NO.

SHEET 8

OF 19

DEPTH (m)		LENGTH (m)	ROCK TYPE	DESCRIPTION	SAMPLE NO.	DEPTH (m)		LENGTH (m)	ASSAYS			LENGTH x ASSAY		AVERAGE ASSAY		
From	To					From	To		WO3%							
117.8	119.2		Breccia and Gouge zone	Brecciated zone with pyrite mineralization and calcite crystals followed by limonitic and grey gouge. 117.8-118.1 brecciated altered skarn, no scheelite, with calcite present and abundant pods of pyrite. 118.1-118.4 angular breccia with calcite, abundant pyrite and excellent hexagonal crystals of calcite at 118.15 m and 118.3 m. 118.4-118.75 well broken up biotite schist and quartzite with Fe-stain and calcite. 118.75-119.2 limonitic and grey gouge with calcite.												
119.2	129.65		B Q S, Subskarn, Skarn	Dark grey interlaminated biotite schist and quartzite with minor sections of subskarn and skarn, and sections of light skarn interlaminated with biotite schist and quartzite. Foliation to core axis angle averages approximately 80°. 119.45-119.6 actinolite skarn rimmed by light green pyroxene skarn, surrounded by feldspar and light green pyroxene. Skarn: unmineralized. 119.6-119.8 light green pyroxene skarn interlaminated with biotite schist, unmineralized. 120.0-120.9 light green pyroxene skarn interlaminated with biotite schist and quartzite; unmineralized, minor pyrrhotite. 121.15-121.3 abundant quartz veins with minor skarn forming minerals. 121.85-122.0 green pyroxene skarn interlaminated with biotite schist and some quartzite; minor pyrite.												

**BEMA INDUSTRIES LTD.****DIAMOND DRILL LOG AND SAMPLE RECORD**

HOLE NO.

SHEET 9 OF 19

DEPTH (m)		LENGTH (m)	ROCK TYPE	DESCRIPTION	SAMPLE NO.	DEPTH (m)		LENGTH (m)	ASSAYS			LENGTH x ASSAY		AVERAGE ASSAY				
From	To					From	To		WO3%									
119.2	129.65		B O S	122.2 m 2 cm. band of poor skarn.														
			Subskarn,	124.95 m 3 cm. of bull quartz.														
			Skarn	125.0-125.2 abundant quartzite with Fe-stain and calcite along fractures.														
			(cont'd)	125.4-125.8 light green pyroxene and calcite subskarn with minor bands of garnet.														
				126.4-126.5 quartz with calcite veining.														
				126.5-126.9 light grey gouge zone containing abundant calcite.														
				127.1-127.25 small drag fault at angle of 9° to core axis.														
				127.7-127.9 interlaminated subskarn biotite schist and quartzite.														
				127.9-128.1 light green pyroxene skarn surrounding quartzite; no scheelite, minor pyrrhotite.														
				128.1 small scale fold														
				128.25 minor pyrite														
				128.3 and 128.55 minor pyrrhotite veining through bull quartz.														
				129.3-129.4 calcite on fractures.														
129.65	129.85		Biotite Granodiorite	White-grey, medium grained, equigranular biotite granodiorite. Upper contact at approx. 70° to core axis. Lower contact difficult to discern.														
129.85	130.0		B O S, Subskarn	Interlaminated quartzite, biotite schist and light green pyroxene skarn, unmineralized. Foliation to core axis angle is approx. 85°. 130.0 m MISLATCH - loss of 0.5 m.														
			(approx.)															
130.0	130.4		Biotite Granodiorite	White-grey, medium grained, equigranular biotite granodiorite. Upper and lower contact difficult to discern.														

**BEMA INDUSTRIES LTD.****DIAMOND DRILL LOG AND SAMPLE RECORD**

HOLE NO.

SHEET 10 OF 19

DEPTH (m)		LENGTH (m)	ROCK TYPE	DESCRIPTION	SAMPLE NO.	DEPTH (m)		LENGTH (m)	ASSAYS			LENGTH x ASSAY	AVERAGE ASSAY				
From	To					From	To		W03%								
130.9	131.85		B O S, Subskarn	Interlaminated biotite schist, quartzite and diopside skarn, with sections of light green-white pyroxene subskarn at 131.15 - 131.3 and 131.4 - 131.5. Garnet occurs in the subskarn at 131.17. Very minor epidote at 131.1 m. Foliation at 80° - 90° to core axis.													
131.85	136.75		Subskarn	Predominantly light grey-green quartz wollastonite subskarn. Minor sections of biotite schist and quartzite. Foliation to core axis angle averages approximately 85°. Some pyroxene skarn. 132.3 2 cm. of light green pyroxene subskarn. 132.45 3 cm. of light green pyroxene and feldspar skarn. 132.55 interlaminated biotite schist and quartzite; minor pyrrhotite. 132.9 minor biotite schist; minor pyrrhotite 133.0-133.1 and 133.2 m minor pyroxene skarn surrounded by feldspar. 133.25-133.8 dominantly light green diopside skarn. 133.8-134.0 interlaminated biotite schist and quartzite. 134.7-134.8 minor stringers of hedenbergite skarn containing minor pyrrhotite. 135.0 5 cm. of bull quartz. 135.55 minor pyrrhotite. 136.15 0.5 cm. band of garnet. 136.25-136.6 very minor interlaminae of light green pyroxene skarn; minor pyrrhotite.													
136.75	147.8		B O S, Subskarn Minor Skarn	Grey interlaminated quartzite and biotite schist with sections of subskarn. Minor skarn. Foliation to core axis angle ranges from 75° to 85°.													

**BEMA INDUSTRIES LTD.**

## DIAMOND DRILL LOG AND SAMPLE RECORD

HOLE NO.

SHEET 11

OF 19

DEPTH (m)		LENGTH (m)	ROCK TYPE	DESCRIPTION	SAMPLE NO.	DEPTH (m)		LENGTH (m)	ASSAYS			LENGTH x ASSAY	AVERAGE ASSAY		
From	To					From	To		WO3%						
136.75	147.8		B O S, Subskarn, Minor Skarn (cont'd)	136.8 m 1 cm. zone of epidote surrounded by garnet and light green diopside calcite and feldspar skarn; minor pyrrhotite. 137.4-137.6 abundant quartz with minor stringers of hedenbergite skarn containing pyrite; no scheelite. 137.7 m 5 cm. of subskarn. 137.9-138.5 quartzite interlaminated with biotite schist and pale pyroxene. Subskarn a few minor interlaminae of hedenbergite skarn with minor pyrrhotite. 138.75-138.95 interlaminated biotite schist, quartzite and diopside subskarn minor pyrrhotite. 138.95-139.1 light green-grey siliceous subskarn with minor pyrrhotite. 139.25 2 cm. of siliceous subskarn. 139.3-140.8 interlaminated biotite schist, quartzite and light green diopside skarn containing minor pyrrhotite. Light green skarn appears as ribbon veinlets parallel to foliation. 141.0-141.2 rusty biotite schist and quartzite. 141.25 1 cm. subskarn with garnet bordered by dark green hedenbergite skarn. 141.35 1 cm. band of dark skarn with minor pyrrhotite. 142.2-142.7 light green diopside skarn interlaminated with biotite schist and quartzite; minor pyrrhotite. 142.77 m ½ cm. band of epidote. 143.1 m small scale folds. 144.3-144.45 abundant quartz with minor hedenbergite stringers. 145.15 m ½ cm. of epidote. 145.15-145.6 interlaminated biotite schist,											

**BEMA INDUSTRIES LTD.****DIAMOND DRILL LOG AND SAMPLE RECORD**

HOLE NO.

SHEET 12

OF 19

DEPTH (m)		LENGTH (m)	ROCK TYPE	DESCRIPTION	SAMPLE NO.	DEPTH (m)		LENGTH (m)	ASSAYS				LENGTH x ASSAY		AVERAGE ASSAY		
From	To					From	To		WO3%								
136.75	147.8		B Q S, Subskarn, Minor Skarn (cont'd)	quartzite, and light green pyroxene subskarn; gamet occurs in subskarn at 145.25. 145.8-146.2 quartz-rich subskarn with minor pyrrhotite. 146.6 5 cm. of interlaminated subskarn, quartzite and minor biotite schist. 146.9-147.1 light grey pyroxene, feldspar subskarn, minor pyrrhotite. 147.25-147.4 calcite vein? at 15° to core axis; small splays of epidote; pyrrhotite present. 147.5-147.6 epidote skarn. 147.6-147.8 abundant quartz with pyrrhotite.													
147.8	151.65		Biotite Granodiorite	Light grey, medium grained, equigranular biotite granodiorite. Upper contact at 90° to core axis. Lower contact at 85° to core axis. 149.25-150.6 Fe-stain and calcite along moderate fractures. 150.6-151.65 extensive calcite-filled fracture at angle of 10° to core axis.													
151.65	155.0		B Q S, Skarn	Thinly interlaminated medium-green skarn, grey biotite schist and quartzite. Skarn seems to occur as laminations replacing biotite schist. The skarn appears to be dominantly of a light coloured pyroxene and quartz composition. Minor pyrrhotite is disseminated throughout the skarn laminations. Foliation to core axis angle averages approximately 88°. 153.35 ½ cm. of epidote skarn. 154.05 1 cm. of epidote skarn.													

**BEMA INDUSTRIES LTD.****DIAMOND DRILL LOG AND SAMPLE RECORD**

HOLE NO.

SHEET 13

OF 19

DEPTH (m)		LENGTH (m)	ROCK TYPE	DESCRIPTION	SAMPLE NO.	DEPTH (m)		LENGTH (m)	ASSAYS			LENGTH x ASSAY		AVERAGE ASSAY	
From	To					From	To		WO3%						
155.0	160.35		Biotite Granodiorite (bleached)	Pale greyish-white, "bleached" biotite (phlogopite) granodiorite. At centre, quartz is slightly porphyritic. Calcite coats the odd fracture throughout. Upper contact is at angle of approx. 40° to core axis where pyrite is present. Lower contact shows a "chill margin" of equigranular biotite granodiorite. (approx. 40 cm.) Lower contact is at angle of approx. 85° to core axis.											
160.35	161.85		B O S Minor Skarn	Dark grey interlaminated biotite andalusite schist and quartzite with a few interlaminaions of light green pyroxene skarn at 160.85 (with minor epidote) and 161.65 161.85. At 160.75 m trace scheelite occurs in skarn "stringers" in quartz. Foliation to core axis angle is 80°.											
161.85	162.55		Skarn	Dark green, predominantly hedenbergite skarn with actinolite skarn occurring in a small section at 162.2 - 162.3 m. Slight scheelite occurs at 162.1 - 162.3 m, and includes one particularly large crystal, ½ cm. <sup>2</sup> . Minor biotite schist laminations are present 162.4 - 162.55 m. Abundant calcite.	36273	162.0	162.3	0.010							
162.55	163.45		B O S	Grey interlaminated biotite schist and quartzite with minor pyrite along foliation. Foliation to core axis angle is approx. 85°. Very minor interlaminaions of subskarn occur irregularly throughout.											
163.45	163.9		Marble	Light grey, slightly banded, fine to medium grained, marble.											



DEPTH (m)		LENGTH (m)	ROCK TYPE	DESCRIPTION	SAMPLE NO.	DEPTH (m)		LENGTH (m)	ASSAYS				LENGTH x ASSAY		AVERAGE ASSAY	
From	To					From	To		W03%							
163.9	171.0		B Q S,	Grey and dark grey interlaminated biotite												
			Subskarn	andalusite schist and quartzite with minor												
			Minor Skarn	pyrite along foliation in some places.												
			and Marble	Sections of subskarn and subskarn inter-												
				laminated with schist and quartzite. Minor												
				skarn. Foliation to core axis angle is 85°												
				163.9 m 4 cm. of quartz with minor light												
				green subskarn containing trace scheelite.												
				164.2 m 4 cm. of pale green pyroxene												
				subskarn.												
				164.5-164.6 light green pyroxene, quartz												
				subskarn.												
				164.7-164.9 green-grey interlaminated												
				biotite schist, quartz and subskarn.												
				165.05-165.1 light grey, slightly banded,												
				fine to medium grained marble.												
				165.4 m moderate pyrite along minor fracture.												
				166.3 m 3 cm. of light green diopside,												
				quartz-rich subskarn.												
				166.5-167.0 abundant quartz "sweats"												
				containing some skarn forming minerals.												
				167.0-167.3 interlaminated biotite schist												
				and light green diopside and amphibole skarn,												
				unmineralized.												
				167.4 1 cm. of grey marble.												
				167.75-168.0 light green wollastonite												
				diopside, quartz skarn; unmineralized.												
				168.0-168.5 abundant quartz sweats with minor												
				skarn forming minerals, pyrrhotite present.												
				Small scale deformation.												
				169.45 1 cm. of epidote skarn.												
				169.85-169.95 bull quartz.												
				169.95-170.05 interlaminated dark green												
				hedenbergite, amphibole? skarn, and biotite												
				schist, unmineralized.												
				170.65 m trace scheelite.												

**BEMA INDUSTRIES LTD.**

## DIAMOND DRILL LOG AND SAMPLE RECORD

HOLE NO.

SHEET 15 OF 19

DEPTH (m)		LENGTH (m)	ROCK TYPE	DESCRIPTION	SAMPLE NO.	DEPTH (m)		LENGTH (m)	ASSAYS				LENGTH x ASSAY		AVERAGE ASSAY	
From	To					From	To		W03%							
171.0	172.15		Leucocratic Granodiorite	Light grey, medium grained leucocratic granodiorite, with phlogopite. At centre quartz is slightly porphyritic. Upper contact is grey gouge. Lower contact shows a "chill margin" of equigranular biotite granodiorite. Lower contact is at 60° to core axis.												
172.15	176.55		B Q S, Skarn	Thinly interlaminated light green skarn, dark grey biotite schist and light grey quartzite. Light green skarn seems to occur as laminations replacing biotite schist, and as ribbon veinlets parallel to foliation. Foliation to core axis angle averages approx. 83°. Many quartz ribbon veinlets contain some skarn minerals. The skarn appears to be composed dominantly of a green amphibole (tremolite?) and lesser diopside. 172.3-172.4 abundant quartz, minor skarn minerals and pyrrhotite. 173.05 m minor pyrrhotite in quartz sweat. 173.5 m ¼ cm. of epidote skarn. 175.8 m minor epidote in skarn lamination. 174.0-174.2 calcite coated fracture parallel to core axis; minor pyrite. 174.7 m trace scheelite. 174.8 m minor pyrrhotite. 175.3 m minor pyrrhotite in quartz "sweat" with minor skarn minerals. 176.0-176.55 fewer interlaminations of skarn.												

**BEMA INDUSTRIES LTD.****DIAMOND DRILL LOG AND SAMPLE RECORD**

HOLE NO.

SHEET 16

OF 19

DEPTH (m)		LENGTH (m)	ROCK TYPE	DESCRIPTION	SAMPLE NO.	DEPTH (m)		LENGTH (m)	ASSAYS			LENGTH x ASSAY		AVERAGE ASSAY			
From	To					From	To		WO3%								
176.55	180.3		Biotite Granodiorite	Light grey, equigranular, medium-grained biotite granodiorite. Upper contact is at angle of approx. 90° to core axis. Upper 70 cm. is heavily fractured (almost gouge) with calcite veining. A few calcite and Fe-oxide coated fractures at angles of 30° - 40° to core axis. Lower contact at angle of approx. 45° to core axis.													
180.3	184.1		B Q S	Interlaminated biotite schist and quartzite, grey in colour. Several quartz ribbon veinlets parallel to foliation. Very minor sections of subskarn. Foliation to core axis angle is approximately 88°. 179.9 - 3 cm. of quartz with skarn minerals and minor pyrrhotite. 181.3 Be-stained quartz. 183.05-183.25 a few minor interlamination of light green amphibole, calcite, quartz skarn. 183.4 m - 2 cm. of light green subskarn. 183.75 m - 2 cm. zone of subskarn bounding small zone of quartz.													
184.1	184.4		Marble	Light grey, medium grained, slightly banded marble.													
184.4	185.9		B Q S, Marble, Subskarn	Medium grey, interlaminated biotite schist, quartzite, marble and light green, dominantly amphibole subskarn. Several quartz "sweats" with minor skarn forming minerals. Minor pyrrhotite along foliation in some places. Foliation to core axis angle average approximately 85°.													
185.9	188.4		B Q S	Dark grey, interlaminated biotite schist and quartzite. Several quartz ribbon veinlets													

**BEMA INDUSTRIES LTD.****DIAMOND DRILL LOG AND SAMPLE RECORD**

HOLE NO.

SHEET 17

OF 19

DEPTH (m)		LENGTH (m)	ROCK TYPE	DESCRIPTION	SAMPLE NO.	DEPTH (m)		LENGTH (m)	ASSAYS			LENGTH x ASSAY		AVERAGE ASSAY			
From	To					From	To		W03%								
185.9	188.4		B O S (cont'd)	parallel to foliation with minor skarn forming minerals and sometimes pyrrhotite. Foliation to core axis angle ranges from 75° to 85°.													
188.4	196.65		B O S. Skarn. Subskarn	Thinly interlaminated light green pyroxene skarn, grey biotite schist and quartzite. Some minor sections of subskarn and one minor band of marble. Several quartz ribbon veinlets parallel to foliation, often with skarn minerals and sometimes with minor pyrrhotite. Foliation to core axis angle averages approximately 85°. 189.1-189.2 well broken-up zone, almost gouge. 189.6-189.7 light green dominately pyroxene skarn with minor light coloured garnet. 191.2-191.25 light grey, medium grained marble. 192.0-192.1 light green dominantly diopside, quartz skarn.													
196.65	199.4		Biotite Granodiorite	Dominantly light grey, medium grained equi-granular biotite granodiorite. Upper contact at angle of approx. 80° to core axis. Calcite coated fracture from 196.35 - 196.6 m at angle of 10° to core axis and from 196.9 - 197.3 at the same angle. Granodiorite becomes leucocratic at 197.6 to 199.4, and quartz becomes slightly porphyritic. Arsenopyrite crystal at 198.0 m. Pale green colour dominates from 198.2 - 199.0 as calcite and chlorite enters the intrusive (rock responds to HCl) and/or perhaps a calcium silicate (wollastonite?). Lower contact is at approx. 65° to core axis and contact margin exhibits feldspar as the dominant mineral phase.													

**BEMA INDUSTRIES LTD.**

## DIAMOND DRILL LOG AND SAMPLE RECORD

HOLE NO.

SHEET 18 OF 19

DEPTH (m)		LENGTH (m)	ROCK TYPE	DESCRIPTION	SAMPLE NO.	DEPTH (m)		LENGTH (m)	ASSAYS				LENGTH x ASSAY		AVERAGE ASSAY				
From	To					From	To		WO3%										
199.4	200.9		B.O.S., Subskarn	Thinly laminated light green subskarn, grey biotite schist and quartzite, with one section of dominantly subskarn, at 200.4 - 200.7. A ¼ cm. band of epidote occurs at 200.38 m. The subskarn appears to be composed mostly of a light green pyroxene, quartz and feldspar with possibly light green amphibole.															
200.9	202.9		Biotite Granodiorite	Greyish, medium grained, equigranular biotite granodiorite. Calcite and Fe-oxide coated fractures throughout at angles of approx. 20° to core axis. Upper contact at angle of 88° to core axis. Lower contact at angle of approx. 65° to core axis.															
202.9	207.0		B.O.S., Subskarn	Thinly laminated light green subskarn, grey biotite schist and quartzite with sections of dominantly subskarn and sections of only interlaminated biotite schist and quartzite. Several quartz ribbon veinlets parallel to foliation, sometimes containing skarn minerals and pyrrhotite. Foliation to core axis angle is 80°. 203.4-203.9 light grey-green subskarn composed, apparently, of a light green pyroxene and quartz with minor pyrrhotite. 203.95 1 cm. of dark hedenbergite skarn. 204.0-204.05 quartz with skarn minerals present and feldspar. 205.0-205.9 interlaminated biotite schist and quartzite with few or no skarn laminations. 205.9-206.3 abundant quartz. 206.95 very minor epidote.															



# BEMA INDUSTRIES LTD.

## DIAMOND DRILL LOG AND SAMPLE RECORD

HOLE NO.

SHEET 19 OF 19

DEPTH (m)		LENGTH (m)	ROCK TYPE	DESCRIPTION	SAMPLE NO.	DEPTH (m)		LENGTH (m)	ASSAYS			LENGTH x ASSAY		AVERAGE ASSAY	
From	To					From	To		WO3%						
207.0	216.9		Biotite Granodiorite	Grey, medium-grained, equigranular biotite granodiorite. Calcite and Fe-oxide coating fractures throughout at angles of 40° - 70° to core axis. Upper contact at angle of approximately 60° to core axis. Abundant calcite veining at 212.3 - 212.5. Soft, almost gouged zone at 213.15 - 213.55. Lower contact at angle of 30° to core axis.											
216.9	219.0		B O S. Subskarn	Rusty-greenish-grey, thinly laminated light green subskarn, biotite schist, quartzite, and minor dark green skarn (unmineralized). Entire section is rusty. Dark green hedenbergite skarn occurs at 217.6 - 217.65 m. Subskarn appears to be composed of a light green pyroxene and quartz. Foliation to core axis angle ranges from 85° - 90°.											
219.0	225.0		Biotite Granodiorite	Grey, medium-grained, equigranular biotite granodiorite. Calcite and Fe-oxide coated fractures to 222.0 m, at angles of 0° - 30° to core axis. Upper contact at 85° to core axis. After 222.0 m granodiorite is solid.											
	225.0			END OF HOLE											



# BEMA INDUSTRIES LTD.

## DIAMOND DRILL LOG AND SAMPLE RECORD

HOLE NO. 82-03 SHEET 1 OF 22

LENGTH 225.86 metres 741 feet

PROPERTY DUBLIN GULCH

LOCATION

RECOVERY

CORE SIZE N Q

STARTED JULY 25, 1982

LATITUDE 7099670.1 N

CLIENT CANADA TUNGSTEN MINING CORPORATION LTD.

COMPLETED JULY 28, 1982

DEPARTURE 464118.1 E

## CLINOMETER TESTS

LOGGED BY J. DONNELLY

BEARING

DEPTH (m)

OBS'D

CORR'D

AZIMUTH

CONTRACT NO. 82-06

ELEVATION 1104.8 meters

0

65°

31°

220.0

24°

66°

33°

DEPTH (m)		LENGTH (m)	ROCK TYPE	DESCRIPTION	SAMPLE NO.	DEPTH (m)		LENGTH (m)	ASSAYS			LENGTH x ASSAY	AVERAGE ASSAY				
From	To					From	To		WO3%								
0	8.2		Overburden														
8.2	35.55		B Q S	Interlaminated quartzite and biotite schist. Slight rusty stain on rock. Several quartz ribbon veinlets parallel to foliation. Rock is well fractured in several places. Foliation to core axis angle ranges from 75° to 85°. 8.8-9.0 bull quartz. 11.9 m small scale deformation. 12.7-13.0 bull quartz. 13.7-13.95 abundant bull quartz. 19.2-19.3 small scale folds. 19.8-19.9 small scale folds. 20.05 m small scale deformation. 20.85-22.0 rusty quartzite. 23.0-23.1 abundant quartz. 24.9-25.0 soft, almost gouge zone. 26.0 m rusty quartz vein at angle of 35° to core axis. 33.05-33.1 small zone of fairly angular breccia. 33.3-33.5 abundant quartz.													
35.55	39.7		B O S. Skarn	Thinly interlaminated medium green skarn with dark grey biotite schist and light grey quartzite. Minor pyrrhotite disseminated through some of the skarn. The skarn appears to occur as laminations replacing biotite schist. Several													



DEPTH (m)		LENGTH (m)	ROCK TYPE	DESCRIPTION	SAMPLE NO.	DEPTH (m)		LENGTH (m)	ASSAYS				LENGTH x ASSAY		AVERAGE ASSAY	
From	To					From	To		WO3%							
35.55	39.7		B Q S, Skarn (cont'd)	quartz ribbon veinlets parallel to foliation. Some sections where biotite schist is less prominent and skarn more so. Skarn is composed mostly of amphibole. Foliation to core axis angle ranges from 75° to 88°. 35.6 m 4 cm section of coarse-grained brown and green amphibole, with calcite. 36.05 m small scale deformation. 36.2 m garnet present in skarn. 36.9-37.1 absence of skarn inter laminations. 37.1-37.2 abundant quartz with light green amphibole and feldspar skarn. 38.0 minor deformation in biotite schist. 38.1-38.6 abundant quartz and quartzite. 39.0-39.2 fairly intense calcite veining at various angles to core axis.												
39.7	42.5		Quartzite, Sericitic Schist	Green-grey inter laminated quartzite and sericitic schist. Minor sections of quartz containing skarn minerals. Foliation to core axis angle ranges from 75° to 85°. Minor flecks of biotite throughout. 40.25-40.35 abundant quartz with minor amphibole skarn present; unmineralized. 41.25-41.45 abundant quartz with minor skarn-forming minerals and minor pyrrhotite.												
42.5	43.9		Quartzite	Rusty coloured quartzite with some quartz veining and minor calcite veining. Minor pyrrhotite along some veins. 43.8-43.9 bull quartz.												



**BEMA INDUSTRIES LTD.****DIAMOND DRILL LOG AND SAMPLE RECORD**

HOLE NO.

SHEET 4

OF 22

DEPTH (m)		LENGTH (m)	ROCK TYPE	DESCRIPTION	SAMPLE NO.	DEPTH (m)		LENGTH (m)	ASSAYS				LENGTH x ASSAY		AVERAGE ASSAY	
From	To					From	To		WO3%							
53.5	55.5		Quartzite	Light green grey quartzite with sericitic partings. Minor disseminated pyrite. Foliation to core axis angle ranges from 75° - 88°. Several quartz ribbon veinlets parallel to foliation. 54.65-54.8 bull quartz.												
55.5	61.25			Green-grey, well-"weathered" quartzite with sericitic partings and some inter laminations of biotite schist. Foliation to core axis angle is approximately 80°. 55.5-55.85 very abundant pyrite, disseminated and in veins. 55.9-56.0 very soft sericitic zone. 56.0-56.4 well fractured zone. 56.5 m MISLATCH loss of 3 meters. 59.5-59.7 very soft sericitic zone. 60.0-60.1 abundant quartz with minor feldspar and calcite. 60.4-60.6 small scale deformation of biotite schist. 60.9-61.0 brown-green "gouge". 61.1-61.25 biotite schist and quartz.												
61.25	63.65		B Q S	Inter laminated quartzite and biotite schist. Rusty stain on the rock. Numerous quartz ribbon veinlets parallel to foliation. Rock is well fractured in several areas. Foliation to core axis angle averages approx. 65°. Minor calcite veining in places.												
63.65	67.9		B Q S, Skarn	Generally light grey, inter laminated biotite schist and quartzite with sections of skarn present. The rock is slightly rusty. Several quartz ribbon veinlets parallel to foliation. Foliation to core axis angle ranges from 60° to 90°.												

**BEMA INDUSTRIES LTD.****DIAMOND DRILL LOG AND SAMPLE RECORD**

HOLE NO.

SHEET 5

OF 22

DEPTH (m)		LENGTH (m)	ROCK TYPE	DESCRIPTION	SAMPLE NO.	DEPTH (m)		LENGTH (m)	ASSAYS			LENGTH x ASSAY		AVERAGE ASSAY			
From	To					From	To		WO3%								
63.65	67.9		B O S, Skarn (cont'd)	63.9-64.05 light green-white amphibole? calcite, quartz subskarn, surrounded by dark green hedenbergite quartz skarn, quartz ribbon veinlet, slight scheelite. 64.55-65.5 deformation of biotite schist and quartzite, including quartz ribbon veinlets at 64.55-64.7 and 65.1-65.25. Foliation is almost parallel to core axis. Very minor pyrite altered skarn from 64.9- 65.0 with slight scheelite, minor pyrite. Fair pyrite at 65.35 - 65.45. 65.7-65.8 dark green amphibole and lesser pyroxene skarn; minor pyrite; no scheelite. 66.0-66.15 abundant quartz with calcite and feldspar from 66.1-66.15 66.7 m 1 cm. band of dark green hedenbergite skarn; unmineralized. 66.75 m 2 cm. band of hedenbergite skarn; unmineralized. 66.95 3 cm. band of unmineralized hedenbergite skarn. 67.2 m minor pyrrhotite in quartz ribbon veinlet. 67.25 m 2 cm. band of unmineralized skarn. 67.5-67.7 dark green pyroxene and amphibole skarn with trace and slight scheelite.													
67.9	69.3		Marble	Light grey, medium grained, slightly banded marble.													
69.3	69.5		Skarn	Dark green hedenbergite skarn with trace and slight scheelite mineralization.	36338	69.3	69.6		0.050								



DEPTH (m)		LENGTH (m)	ROCK TYPE	DESCRIPTION	SAMPLE NO.	DEPTH (m)		LENGTH (m)	ASSAYS				LENGTH x ASSAY	AVERAGE ASSAY
From	To					From	To		WO3%					
69.5	72.3		B.O.S., Marble	Grey interlaminated biotite schist and quartzite with sections of marble. Schist and quartzite are broken up and rusty in places. Foliation to core axis angle averages approximately 85°										
				69.6-69.8 biotite schist and quartzite with minor interlaminations of marble.										
				69.9-70.2 well broken up and rusty schist and quartzite.										
				70.45-70.85 well broken up and rusty biotite schist and quartzite.										
				71.0-71.1 grey marble.										
				71.1-71.8 abundant quartzite.										
72.3	74.7		Graphitic Phyllite	Black fairly homogeneous, graphitic phyllite with small quartz lenses parallel to foliation. Two quartz-rich sections occur at 73.55-73.75 and 74.0-74.3. Minor pyrite along foliation throughout. Foliation to core axis angle averages approximately 88°										
74.7	78.5		B.O.S., Marble Graphitic Phyllite	Interlaminated biotite schist and quartzite with sections of marble and graphitic phyllite.										
				74.75-74.9 abundant quartz with minor skarn forming minerals and pyrite.										
				75.3-75.6 small scale deformation of graphitic phyllite containing quartz ribbon veinlets, and minor calcite veins.										
				75.6-75.75 grey marble.										
				75.85-76.0 minor pyrite veins.										
				76.1-76.5 black graphitic phyllite containing minor pyrite along foliation. Bull quartz at 76.3-76.35 and 76.42-76.47 and small scale deformation at 76.4.										

**BEMA INDUSTRIES LTD.****DIAMOND DRILL LOG AND SAMPLE RECORD**

HOLE NO.

SHEET 7

OF 22

DEPTH (m)		LENGTH (m)	ROCK TYPE	DESCRIPTION	SAMPLE NO.	DEPTH (m)		LENGTH (m)	ASSAYS			LENGTH x ASSAY		AVERAGE ASSAY			
From	To					From	To		WO3%								
74.7	78.5		B O S, Marble	76.8-77.25 grey marble with 2 cm. of subskarn and garnet at 76.85 m with trace scheelite.													
			Graphitic	Minor pyrite at 77.0 m.													
			Phyllite	77.4 m fair pyrite.													
			(cont'd)														
78.5	79.4		Graphitic	Black, graphitic phyllite with minor pyrite,													
			Phyllite	and fair pyrite at 78.5-78.6. Generally, the rock is soft and crushed.													
79.4	80.8		Marble	Dominantly grey to light grey, medium-grained marble with minor laminae of biotite schist.													
				A quartzite-rich section occurs at 80.3-80.45.													
				Foliation to core axis angle is approximately 86°.													
80.8	82.3		Quartzite	Light grey and rusty, fine grained quartzite with minor micaceous partings. Unit is light grey 80.8-81.6 and rusty to 82.3.													
82.3	90.7		B O S, Subskarn	Interlaminated biotite schist and quartzite, with minor sections of subskarn and marble.													
			Marble	82.3-83.0 some graphitic partings.													
				84.35-85.6 interlaminations of pale green skarn with biotite schist and quartzite; minor dark green skarn laminations at													
				85.3-85.6, minor pyrite. Light green subskarn appears to be composed of a light green pyroxene and quartz; the dark skarn (unmineralized) appears to be composed dominantly of a dark green pyroxene.													
				86.35-86.5 1 cm. dark green amphibole skarn surrounded by feldspar and then a light green subskarn, composed of a light green pyroxene and feldspar.													

**BEMA INDUSTRIES LTD.****DIAMOND DRILL LOG AND SAMPLE RECORD**

HOLE NO.

SHEET 8

OF 22

DEPTH (m)		LENGTH (m)	ROCK TYPE	DESCRIPTION	SAMPLE NO.	DEPTH (m)		LENGTH (m)	ASSAYS			LENGTH x ASSAY	AVERAGE ASSAY				
From	To					From	To		WO3%								
82.3	90.7		B O S, Subskarn Marble (cont'd)	86.5-86.75 interlaminated medium green pyroxene skarn and biotite schist; skarn is unmineralized. 86.75-87.2 interlaminated marble and pale green subskarn with quartz ribbon veinlets; fair pyrrhotite. 87.45 m small scale deformation along quartz vein at angle of 55° to core axis; minor pyrrhotite. 87.65-87.95 marble with calcite veins containing some epidote; minor biotite schist and quartz. 88.0-88.25 calcite vein at angle of 5° to core axis; minor Fe-stain. 88.3-88.35 light green subskarn and quartz. 89.0 m 5 cm. of quartz. 89.7 m 5 cm. of slightly altered dark green pyroxene, feldspar skarn; unmineralized. 90.0-90.5 very soft, crushed schist and minor quartzite. 90.5-90.7 quartz.													
90.7	99.4		B Q S, Skarn Marble	Thinly interlaminated pale green skarn, grey biotite schist and quartzite. Many quartz ribbon veinlets parallel to foliation. Minor sections of marble. Skarn generally appears to be replacing biotite schist. Pale green skarn appears to be composed dominantly of pyroxene and lesser amphibole. Foliation to core axis angle is approximately 87°. 90.85-90.95 abundant quartz with minor pyrrhotite. 91.65 2 cm. band of dark green hedenbergite skarn, unmineralized. 92.0-92.25 minor pyrrhotite in quartz. 92.6-92.65 dark green hedenbergite skarn with trace scheelite.	36302	92.6	93.4		0.015								

**BEMA INDUSTRIES LTD.**

## DIAMOND DRILL LOG AND SAMPLE RECORD

HOLE NO.

SHEET 9

OF 22

DEPTH (m)		LENGTH (m)	ROCK TYPE	DESCRIPTION	SAMPLE NO.	DEPTH (m)		LENGTH (m)	ASSAYS				LENGTH x ASSAY		AVERAGE ASSAY	
From	To					From	To		WO3%							
90.7	99.4		B Q S, Skarn	92.8-92.85 hedenbergite skarn with trace												
			Marble (cont'd)	scheelite.												
				93.0 fair pyrite.												
				93.2 5 cm. of dark green hedenbergite												
				skarn with trace to slight scheelite.												
				93.6-93.95 abundant quartzite; minor												
				pyrrhotite.												
				94.3-94.5 very minor dark green skarn												
				minerals with trace scheelite at 94.4 m.												
				94.7 and 94.8 small scale folding.												
				95.25-95.4 few - no inter laminations of												
				skarn.												
				96.3 m 3 cm. of grey marble.												
				96.55 m excellent actinolite crystals in												
				calcite vein at 45° to core axis.												
				96.6-96.7 grey, medium grained marble.												
				96.9-97.2 grey, medium grained marble.												
				97.4-97.6 minor pyrrhotite.												
				98.2-98.55 few - no inter laminations of												
				skarn.												
				99.15-99.4 abundant quartzite.												
99.4	101.6		B Q S, Skarn, Subskarn	Inter laminated biotite schist, and quartzite,												
				with sections of skarn and subskarn. Minor												
				pyrite along foliation throughout.												
				Foliation to core axis angle is 83°.												
				99.4-99.5 dark green amphibole skarn with	36303	99.3	99.6		0.005							
				slight scheelite.												
				100.7-100.8 pale green diopside subskarn.												
				99.9-100.0 thinly inter laminated subskarn												
				and biotite schist.												
				100.0-100.15 light green diopside quartz	36304	99.6	100.6		0.001							
				subskarn; minor pyrite.												
				101.75 m 3 cm. of dark green hedenbergite	36305	100.6	101.0		0.003							
				skarn with trace scheelite.												
				101.15-101.3 hedenbergite skarn with	36306	101.0	101.3		0.031							
				slight to moderate scheelite.												

**BEMA INDUSTRIES LTD.****DIAMOND DRILL LOG AND SAMPLE RECORD**

HOLE NO.

SHEET 10

OF 22

DEPTH (m)		LENGTH (m)	ROCK TYPE	DESCRIPTION	SAMPLE NO.	DEPTH (m)		LENGTH (m)	ASSAYS			LENGTH x ASSAY		AVERAGE ASSAY	
From	To					From	To		W03%						
101.6	105.8		Biotite Granodiorite	Light grey, equigranular, medium-grained biotite granodiorite. Upper contact at angle of approximately 85° to core axis. Lower contact at angle of approximately 22° to core axis. Intrusive becomes leucocratic from 103.0 m, with quartz becoming slightly porphyritic. Rusty, broken-up section at 103.4-103.6. Quartz vein at angle of 50° to core axis at 104.25 m. Calcite veining with very minor pyrite at angle of 25° to core axis at 104.75 - 104.95.											
105.8	106.55		B Q S	Grey, interlaminated biotite schist and quartzite. Foliation to core axis angle is 80°. Minor bands of marble and light green subskarn with minor pyrrhotite at 106.3 - 106.55.											
106.55	107.85		Marble	Clean, white, medium-grained marble.											
107.85	108.15		B O S, Skarn	Thinly interlaminated medium green amphibole skarn and biotite schist; fair pyrite along foliation. Foliation to core axis angle is 82°.											
108.15	108.9		Marble	Fairly clean, white, medium-grained marble with minor skarn minerals in quartz vein bounded by biotite schist, at 108.5 m.											
108.9	112.4		B Q S, Minor Marble, Subskarn	Grey to dark grey interlaminated biotite schist and quartzite with minor sections of marble and subskarn. Foliation to core axis angle ranges from 75° to 88°. 108.95 ¼ cm. of marble thinly rimmed by subskarn. 109.05 4 cm. of quartz with minor pyrrhotite											

**BEMA INDUSTRIES LTD.****DIAMOND DRILL LOG AND SAMPLE RECORD**

HOLE NO.

SHEET 11

OF 22

DEPTH (m)		LENGTH (m)	ROCK TYPE	DESCRIPTION	SAMPLE NO.	DEPTH (m)		LENGTH (m)	ASSAYS			LENGTH x ASSAY	AVERAGE ASSAY			
From	To					From	To		W03%							
108.9	112.4		B Q S, Minor Marble, Subskarn (cont'd)	109.65-109.8 abundant quartz with minor "stringers" of green pyroxene skarn with minor pyrrhotite. 111.1-111.25 4 cm. of marble on either side of 5 cm. of subskarn. Subskarn is light green pyroxene and amphibole in composition. 4 cm. bands of epidote occur at 111.2 and 111.24. 111.5 m 4 cm. quartz with minor pyrite and a few skarn minerals. 111.7 small scale deformation.												
112.4	113.0		Biotite Granodiorite	Grey, medium grained, equigranular biotite granodiorite. Upper contact at 87° to core axis. Lower contact at angle of approximately 80° to core axis.												
113.0	118.5		B Q S, Marble Subskarn, Skarn	Sections of interlaminated biotite schist and quartzite; sections of marble and sections of subskarn and skarn. Foliation to core axis angle averages approximately 80°. 113.0-113.7 interlaminated biotite schist and quartzite. 113.7-114.4 dominantly pale green pyroxene-quartz subskarn with a few interlaminaions of biotite schist and 4 cm. of marble occur at 114.25 m. 114.4-114.5 interlaminated biotite schist and quartzite. 114.5-114.85 thinly interlaminated subskarn biotite schist and quartzite; calcite vein at angle of 10° to core axis from 114.5 - 114.6.												

**BEMA INDUSTRIES LTD.****DIAMOND DRILL LOG AND SAMPLE RECORD**

HOLE NO.

SHEET 12

OF 22

DEPTH (m)		LENGTH (m)	ROCK TYPE	DESCRIPTION	SAMPLE NO.	DEPTH (m)		LENGTH (m)	ASSAYS			LENGTH x ASSAY	AVERAGE ASSAY			
From	To					From	To		W03%							
113.0	118.5		B Q S, Marble	114.85-115.0 green amphibole - feldspar skarn with minor garnet; unmineralized.												
			Subskarn.	115.0-115.15 interlaminated biotite schist and quartzite.												
			Skarn (cont'd)	115.15-115.25 dark green amphibole skarn at the centre of light green amphibole skarn; unmineralized.												
				115.25-115.4 interlaminated biotite schist and subskarn.												
				115.4-116.25 dark green amphibole skarn, unmineralized, and light green amphibole and lesser pyroxene skarn, with trace scheelite at 116.0 m; no apparent zonation.												
				116.25-117.3 thinly interlaminated light green skarn and biotite schist with some quartz ribbon veinlets; light green skarn appears to be composed of light green amphibole? quartz, and some calcite.												
				117.3-117.6 light grey, medium-grained marble.												
				117.6-118.45 grey, interlaminated biotite schist and quartzite with several quartz ribbon veinlets parallel to foliation. Minor pyrrhotite at 117.85; minor skarn interlamination at 118.4-118.5.												
118.5	119.4		Biotite	Dark grey, medium grained, equigranular biotite granodiorite. Upper contact at angle of approximately 80° to core axis.												
			Granodiorite	Lower contact at angle of 65° to core axis. Minor quartz veins at angle of approximately 15° to core axis, causing slight bleaching of the granodiorite.												

**BEMA INDUSTRIES LTD.****DIAMOND DRILL LOG AND SAMPLE RECORD**

HOLE NO.

SHEET 13

OF 22

DEPTH (m)		LENGTH (m)	ROCK TYPE	DESCRIPTION	SAMPLE NO.	DEPTH (m)		LENGTH (m)	ASSAYS			LENGTH x ASSAY	AVERAGE ASSAY			
From	To					From	To		WO3%							
119.4	127.55		B Q S, Minor Subskarn, Minor Marble	Grey, interlaminated, biotite andalusite schist and quartzite with many quartz ribbon veinlets parallel to foliation. Minor subskarn and marble. Foliation to core axis angle is approximately 83°. 119.4-119.5 grey, medium-grained marble. 119.5-119.65 altered skarn with 1 cm of marble at 119.6 and abundant pyrite 119.64. 119.65-121.1 interlaminated light green diopside skarn and biotite schist. Fe-oxide and calcite coated fracture at 119.65-119.9 at angle of 20° to core axis. Pyrite in calcite vein at 120.1-120.35 at angle of 10° to core axis. 1 cm. of altered skarn at 120.4 m and 120.5 m. 121.85 m minor interlamination of subskarn. 122.75-122.9 calcite-coated fracture at angle of 10° to core axis. 124.2-124.5 abundant quartzite. 124.95-125.1 light green pyroxene - quartz subskarn; slightly altered.												
127.55	127.95		Biotite Granodiorite	Grey, medium-grained, equigranular biotite granodiorite. Upper contact at angle of 80° to core axis - parallel to foliation. Lower contact at angle of 83° to core axis. Centre of sill is slightly leucocratic.												
127.95	130.4		B Q S	Interlaminated biotite schist and quartzite. Some andalusite in biotite schist in places. Minor pyrite along foliation. Foliation to core axis angle is approximately 85°. 129.0 m 2 cm. of quartz with minor subskarn. 129.6-129.8 abundant quartzite.												

**BEMA INDUSTRIES LTD.****DIAMOND DRILL LOG AND SAMPLE RECORD**

HOLE NO.

SHEET 14

OF 22

DEPTH (m)		LENGTH (m)	ROCK TYPE	DESCRIPTION	SAMPLE NO.	DEPTH (m)		LENGTH (m)	ASSAYS			LENGTH x ASSAY		AVERAGE ASSAY		
From	To					From	To		W03%							
130.4	132.35		Biotite Granodiorite	Grey, medium-grained, equigranular biotite granodiorite. Upper contact is at angle of 80° to core axis. Lower contact is at angle of approximately 75° to core axis. Approximately conjugate fractures at 131.1 - 131.3 at angles of 45° to core axis, with minor pyrite and Fe-oxide coating.												
132.55	133.85		B.O.S. Subskarn	Grey, interlaminated biotite schist and quartzite with minor pyrite along foliation. Foliation to core axis angle is approximately 86°. 133.25 m abundant pyrite in fairly small vein. 133.4-133.5 light green dominantly pyroxene skarn with very minor light green amphibole.												
133.85	135.4		Marble	Light grey and dark grey, medium grained, slightly banded marble. Small section of quartzite interlaminated with marble at 134.35 - 134.55.												
135.4	137.05		Subskarn	Light green quartz wollastonite subskarn with some calcite. Minor pale garnet.												
137.05	137.5		Marble	Grey, medium grained, slightly banded marble. Minor interlaminae of biotite schist.												
137.5	142.6		Skarn, Very Minor Subskarn and B.O.S.	Dark green hedenbergite skarn, moderately well mineralized; some pyrrhotite in places. Minor sections of amphibole skarn, subskarn and interlaminated biotite schist and quartzite. 137.5-137.75 moderate pyrrhotite and pyrite. 137.5-138.1 slight to fair scheelite; minor amphibole skarn at 137.85 m with calcite and pyrite vein at 10° to core axis.	36307	137.5	138.1	0.058								

**BEMA INDUSTRIES LTD.**

## DIAMOND DRILL LOG AND SAMPLE RECORD

HOLE NO.

SHEET 15 OF 22

DEPTH (m)		LENGTH (m)	ROCK TYPE	DESCRIPTION	SAMPLE NO.	DEPTH (m)		LENGTH (m)	ASSAYS			LENGTH x ASSAY		AVERAGE ASSAY		
From	To					From	To		WO3%							
137.5	142.6		Skarn, Very Minor Subskarn	138.1-138.2 light green pyroxene - quartz subskarn.												
			and B Q S (cont'd)	138.2-138.9 interlaminated biotite schist and quartzite with 1 cm. of hedenbergite skarn at 138.5; trace scheelite.	36308	138.1	138.9		0.001							
				139.0-139.2 moderate to heavy scheelite. 139.35 trace scheelite.	36309	138.9	139.2		0.323							
				139.4-139.5 interlaminated biotite schist and quartzite.	36310	139.3	139.75		0.006							
				140.1 slight scheelite. 140.3 trace scheelite.	36311	139.75	140.5		0.022							
				140.55-140.75 interlaminated biotite schist and quartzite.	36312	140.5	140.9		0.003							
				140.8 trace scheelite. 141.3 minor actinolite skarn.												
				141.8-141.95 crystalline calcite surrounded by actinolite skarn which is surrounded further by a pale green, apparently pyroxene skarn, minor pyrrhotite.	36313	140.9	143.2		<0.001							
142.6	159.6		B Q S, Skarn	Generally light grey, interlaminated quartzite and biotite schist with minor pyrite along foliation. Foliation to core axis angle averages approximately 82°. Some sections of skarn, minor marble. Many quartz ribbon veinlets parallel to foliation after 150.0 m.												
				143.3-143.4 dark green hedenbergite skarn with very minor actinolite.	36314	143.2	143.5		0.037							
				Fair scheelite.	36315	143.5	143.9		0.003							
				143.8-144.5 dark green hedenbergite skarn with minor amphibole skarn	36316	143.9	144.4		0.091							
				at 144.4 m; trace scheelite at 143.9; slight scheelite 144.0 - 144.4; trace scheelite at 144.5 m.												
				144.85 - 1 cm. of skarn. 144.85-144.2 calcite and Fe-stained vein at 10° to core axis. Calcite "plates" have also	36317	144.4	146.5		0.001							

grown.

**BEMA INDUSTRIES LTD.****DIAMOND DRILL LOG AND SAMPLE RECORD**

HOLE NO.

SHEET 16

OF 22

DEPTH (m)		LENGTH (m)	ROCK TYPE	DESCRIPTION	SAMPLE NO.	DEPTH (m)		LENGTH (m)	ASSAYS			LENGTH x ASSAY		AVERAGE ASSAY	
From	To					From	To		WO3%						
142.6	159.6		B O S, Skarn (cont'd)	145.6 m trace scheelite in 1 cm. band of skarn.											
				146.0-146.4 abundant quartzite.											
				146.6-146.7 slight scheelite in hedenbergite skarn.	36318	146.5	146.8		0.006						
				147.3-147.55 fair scheelite in dark green hedenbergite skarn; minor garnet at 147.35 m; minor pyrrhotite.	36319	146.8	147.4		< 0.001						
				147.95 m trace scheelite in hedenbergite skarn.	36320	147.4	147.7		0.089						
				148.5-149.0 dark green hedenbergite skarn (slightly altered at 148.5) with minor amphibole present; trace to moderate scheelite.	36321	147.7	148.5		0.001						
				149.1-149.2 dominantly hedenbergite skarn with slight to fair scheelite.	36322	148.5	149.1		0.165						
				149.5-150.0 abundant quartzite.	36323	149.1	149.4		0.013						
				151.5-151.8 dark green hedenbergite skarn slightly altered at 151.5 - 151.6; trace scheelite at 151.7 minor pyrrhotite.											
				151.8-151.95 bull quartz.											
				152.25-152.5 copper stain from drill bit.											
				152.5-152.6 quartz vein at angle of 25° to core axis.											
				153.3-153.4 dark green amphibole skarn; no scheelite; minor pyrrhotite.											
				153.6-153.7 dark green amphibole skarn surrounded by dark green hedenbergite skarn; trace scheelite, minor pyrrhotite.											
				153.9-154.3 extensive fracture at angle of 10° to core axis, with Fe-oxide and minor calcite coating, and quartz crystals.											
				154.75-154.85 small section of breccia, calcite and pyrite present.											

**BEMA INDUSTRIES LTD.****DIAMOND DRILL LOG AND SAMPLE RECORD**

HOLE NO.

SHEET 17

OF 22

DEPTH (m)		LENGTH (m)	ROCK TYPE	DESCRIPTION	SAMPLE NO.	DEPTH (m)		LENGTH (m)	ASSAYS			LENGTH x ASSAY		AVERAGE ASSAY		
From	To					From	To		WO3%							
142.6	159.6		B O S, Skarn	155.9-156.05 2 cm. band of marble												
			(cont'd)	surrounded by fine-grained, light green subskarn.												
				156.4-156.6 grey marble with 2 cm. of light grey quartzite at centre.	36324	156.5	156.85		0.018							
				156.6-156.7 dark green hedenbergite skarn, minor garnet; trace scheelite moderate pyrrhotite.												
				157.0 5 cm. of green pyroxene skarn with slight scheelite.												
				157.1 5 cm. of green pyroxene skarn with slight scheelite.	36325	156.85	157.15		0.029							
				157.4-157.45 green pyroxene? skarn with trace scheelite.	36326	157.15	157.6		0.001							
				157.65-157.85 dark green hedenbergite skarn with trace, slight and fair scheelite; minor pyrrhotite.	36327	157.6	157.9		0.060							
				158.3-158.35 slightly altered dark green pyroxene skarn; unmineralized.												
				158.6 m 2 cm. of dark green skarn with trace scheelite.	36329	158.6	159.1		0.009							
				158.65-158.85 dark green pyroxene skarn with trace scheelite, minor pyrrhotite.												
				159.1-159.25 dark green pyroxene skarn with trace to fair scheelite content; moderate pyrite.	36330	159.1	159.4		0.036							
				159.4 minor epidote.												
159.6	165.6		B O S, Subskarn Skarn, Minor Marble	Thinly interlaminated light green subskarn, biotite schist and quartzite. Several quartz ribbon veinlets parallel to foliation. Foliation to core axis angle averages approximately 80°. Light green subskarn appears to be composed dominantly of a pale pyroxene, quartz and minor light green amphibole. Minor disseminated pyrrhotite. Sections of skarn, subskarn; minor marble.												

DEPTH (m)		LENGTH (m)	ROCK TYPE	DESCRIPTION	SAMPLE NO.	DEPTH (m)		LENGTH (m)	ASSAYS			LENGTH x ASSAY		AVERAGE ASSAY				
From	To					From	To		WO3%									
159.6	165.6		B Q S, Subskarn, Skarn, Minor Marble (cont'd)	160.8-160.9 3 cm. of light green subskarn bounded on either side by unmineralized dark green hedenbergite skarn.														
				161.1-161.2 dark green hedenbergite skarn with trace to fair scheelite.	36331	161.0	161.3		0.019									
				161.75 5 cm. of dark green hedenbergite skarn with trace to slight scheelite.	36332	161.3	161.65		0.001									
				161.65-162.0 dark green hedenbergite skarn with trace to slight scheelite.	36333	161.65	162.0		0.052									
				162.0-162.4 dark green hedenbergite skarn with slight scheelite.	36334	162.0	162.35		0.019									
				163.05-163.15 dark green amphibole and pyroxene skarn surrounded by green pyroxene skarn; slight scheelite.	36335	162.35	163.0		0.001									
				163.15-163.35 dark green pyroxene skarn; slight scheelite.	36336	163.0	163.3		0.009									
				163.65-163.75 light green subskarn; minor garnet.														
				163.95 1 cm. of dark green hedenbergite skarn with trace scheelite.														
				164.2-164.9 inter laminations of biotite schist are scarce.														
				165.15 m 5 cm. of medium grey marble.														
				165.3 m 1 cm of medium grey marble.														
				165.4 m minor skarn minerals.														
165.6	166.6		Graphitic Phyllite	Dark grey to black graphitic phyllite with moderate pyrite along foliation. Phyllite becomes slightly sericitic at centre of section. Bull quartz 166.25-166.45. Quartz ribbon veinlets at 166.5-166.6, and minor pyrite veins.														
166.6	171.85		B Q S, Skarn Subskarn	Thinly inter laminated light-medium green, dominantly pyroxene skarn, grey biotite schist and light grey quartzite with many quartz ribbon veinlets parallel to foliation and minor pyrrhotite along foliation. Foliation to core axis angle averages approximately 82°. Minor sections of skarn and subskarn.														

**BEMA INDUSTRIES LTD.****DIAMOND DRILL LOG AND SAMPLE RECORD**

HOLE NO.

SHEET 19

OF 22

DEPTH (m)		LENGTH (m)	ROCK TYPE	DESCRIPTION	SAMPLE NO.	DEPTH (m)		LENGTH (m)	ASSAYS				LENGTH x ASSAY		AVERAGE ASSAY	
From	To					From	To		WO3%							
166.6	171.85		B O S, Skarn Subskarn (cont'd)	166.8-166.95 dark green hedenbergite skarn with trace scheelite. 166.95-167.15 abundant quartz with minor skarn-forming minerals. 169.0-169.2 abundant quartz, very minor epidote. 169.25-169.5 interlaminated biotite schist and quartzite. 169.75 m very minor garnet. 169.85-170.0 2 cm. of grey marble bounded on either side by quartz containing minor feldspar that is outlined in minor epidote. 170.5-170.65 bull quartz with minor stringers of skarn minerals; no scheelite, minor pyrrhotite.												
171.85	175.05		Biotite Granodiorite	Grey, equigranular, medium-grained biotite granodiorite. Upper contact is at angle of 86° to core axis, parallel to foliation. Minor calcite veining throughout, at angle of approximately 20° to core axis. Lower contact at 20° to core axis.												
175.05	178.25		B O S, Skarn	Interlaminated biotite schist and quartzite with many quartz ribbon veinlets parallel to foliation. Foliation to core axis angle ranges from 75° to 85°. Sections where skarn interlaminations occur with the schist and quartzite. Minor pyrite along foliation throughout. 176.35 3 cm. of slightly altered skarn and subskarn. 176.6-176.65 bull quartz. 176.9-177.1 minor interlaminations of light green pyroxene skarn; no scheelite.												

**BEMA INDUSTRIES LTD.****DIAMOND DRILL LOG AND SAMPLE RECORD**

HOLE NO.

SHEET 20

OF 22

DEPTH (m)		LENGTH (m)	ROCK TYPE	DESCRIPTION	SAMPLE NO.	DEPTH (m)		LENGTH (m)	ASSAYS				LENGTH x ASSAY		AVERAGE ASSAY	
From	To					From	To		WO3%							
175.05	178.25		B O S, Skarn	177.1-177.65 calcite vein with moderate crystalline pyrite, at angle of approximately 15° to core axis.												
			(cont'd)	177.7-178.25 thinly interlaminated medium-green pyroxene skarn, biotite schist and very minor quartzite; no scheelite present.												
178.25	183.8		Biotite Granodiorite	Grey, medium-grained equigranular biotite granodiorite. Upper contact is at angle of 18° to core axis. Minor calcite coated fractures at angle of approximately 20° to core axis throughout. Lower contact is at 85° to core axis. 183.8 CAVE IN HOLE												
183.8	186.8		B O S, Skarn	Thinly interlaminated medium green dominantly pyroxene and lesser amphibole skarn, and biotite schist with some quartz ribbon veinlets parallel to foliation. Minor disseminated pyrrhotite. Foliation to core axis angle is approximately 83°. No scheelite in skarn laminations. 184.35-184.45 minor garnet in skarn laminae.												
186.8	195.0		B O S, Minor Subskarn, Skarn, Marble Breccia	Grey, interlaminated biotite andalusite schist and quartzite with several quartz ribbon veinlets parallel to foliation. Minor pyrite in places, parallel to foliation. Foliation to core axis angle ranges from 70° to 85°. Minor sections of subskarn, skarn, marble and breccia. 189.5-189.6 abundant quartzite. 189.65-190.1 bull quartz is abundant with a calcite vein at an angle of approximately 8° to core axis. Some Fe-oxide. 190.7-190.9 calcite vein breccia with some calcite crystals.												

**BEMA INDUSTRIES LTD.****DIAMOND DRILL LOG AND SAMPLE RECORD**

HOLE NO.

SHEET 21 OF 22

DEPTH (m)		LENGTH (m)	ROCK TYPE	DESCRIPTION	SAMPLE NO.	DEPTH (m)		LENGTH (m)	ASSAYS			LENGTH x ASSAY			AVERAGE ASSAY			
From	To					From	To		WO3%									
186.8	195.0		B O S, Minor Subskarn, Skarn, Marble Breccia (cont'd)	191.15 m very minor skarn laminae, unmineralized. 191.4-191.5 calcite-rich subskarn containing some garnet. 191.75-192.0 some inter laminations of dark green-black biotite? pyroxene skarn; unmineralized. 192.4-192.5 garnetiferous subskarn. 192.65-192.75 inter laminated skarn (unmineralized) biotite schist and minor epidote. 192.75-192.85 medium-grey marble. 192.85-193.1 garnetiferous quartz wollastonite subskarn. 193.8-194.6 inter laminations of green dominantly pyroxene and less amphibole skarn with 5 cm. of dark green hedenbergite skarn at 194.2-194.25 containing slight scheelite; minor pyrite crystals at 193.95 m.														
194.6	194.7		Leucocratic Granodiorite	194.6-194.7 leucocratic granodiorite with slightly porphyritic quartz.														
194.7	195.0		B O S	194.7-195.0 inter laminated biotite schist and quartzite.														
195.0	197.9		Biotite Granodiorite	Grey, equigranular, medium-grained biotite granodiorite. Upper contact at angle of approximately 80° to core axis. Lower contact at angle of approximately 80° to core axis.														
197.9	201.2		B O S, Skarn	Inter laminated biotite schist and quartzite with some quartz ribbon veinlets parallel to foliation. Very minor pyrite parallel to foliation in some places. Foliation to core axis angle averages approximately 80°. Sections of inter laminated skarn and biotite schist and quartzite.														

schist and quartzite.



# BEMA INDUSTRIES LTD.

## DIAMOND DRILL LOG AND SAMPLE RECORD

HOLE NO.

SHEET 22 OF 22

DEPTH (m)		LENGTH (m)	ROCK TYPE	DESCRIPTION	SAMPLE NO.	DEPTH (m)		LENGTH (m)	ASSAYS			LENGTH x ASSAY		AVERAGE ASSAY	
From	To					From	To		WO3%						
197.9	201.2		B Q S, Skarn	198.0 m 2 cm. of biotite granodiorite.											
			(cont'd)	198.05-198.15 vein of biotite granodiorite at angle of approximately 3° to core axis.											
				198.6-198.8 abundant quartz with minor skarn minerals.											
				198.9-199.4 thinly interlaminated light green pyroxene-calcite skarn, biotite schist and quartzite, minor pyrrhotite; no scheelite.											
				200.7-200.9 calcite and pyrite coated fracture at angle of 10° to core axis.											
				201.1 m ½ cm. of dark green skarn; no scheelite.											
201.2	226.0		Leucocratic Granodiorite	Light grey, medium grained leucocratic granodiorite with phlogopite. Quartz is slightly porphyritic. Upper contact is at angle of approximately 80° to core axis, and shows a "chill margin" of equigranular biotite granodiorite from 201.2-202.5. Calcite coated fractures at angles averaging 25° to core axis. Fractures are of weak to moderate intensity throughout.											
				211.0-212.0 strong, calcite coated fracture at angle approximately parallel to foliation.											
				217.2-217.8 moderately extensive chloritization of intrusive along calcite veins that run at approximately 20° to core axis.											
				226.0 END OF HOLE											



SHEET INDEX

1	2	3
4	5	6
7	8	9

0913R7

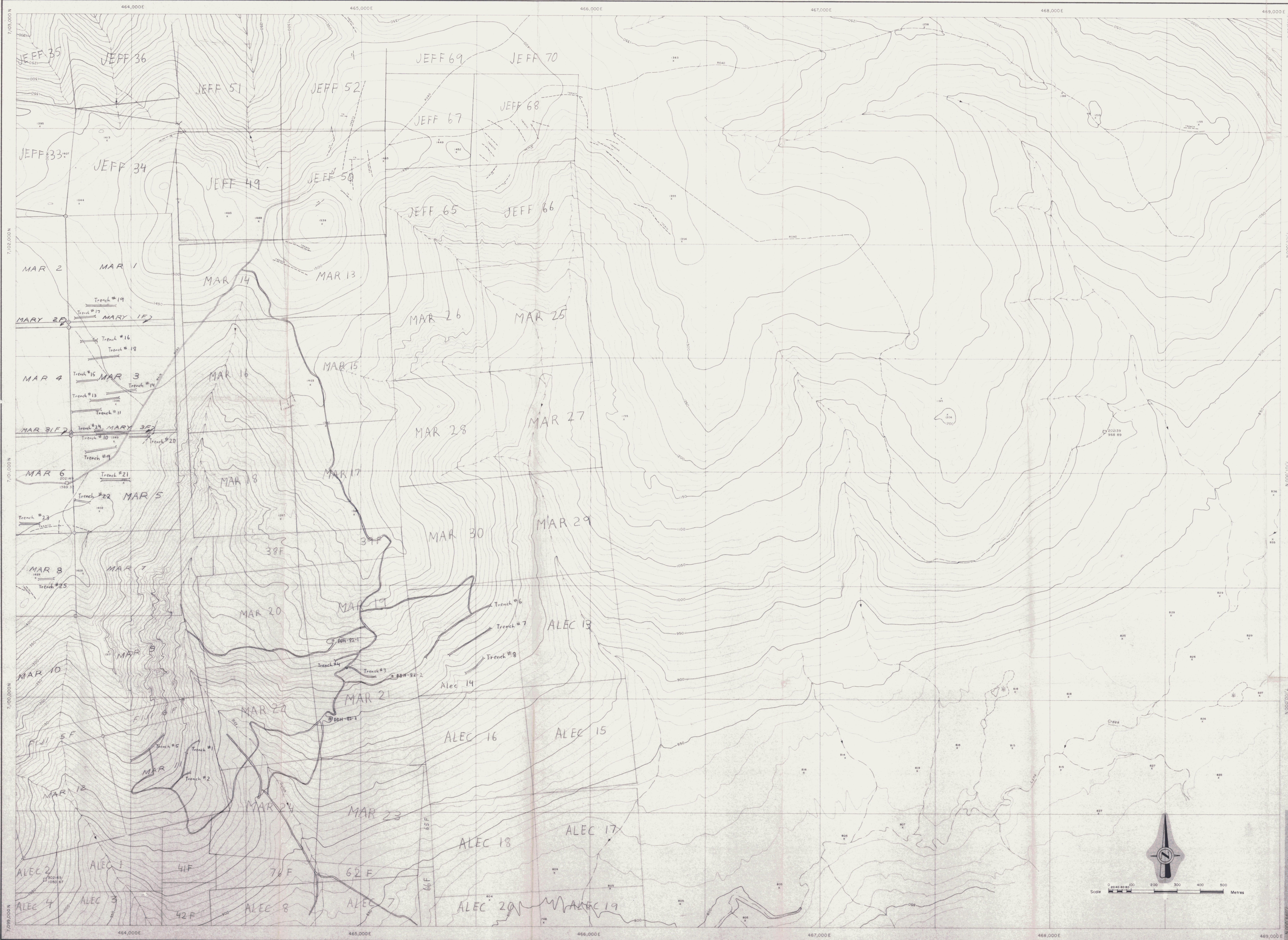
CANADA TUNGSTEN MINING CORPORATION  
**DUBLIN GULCH Y-T**  
 1981 GEOLOGICAL EXPLORATION PROGRAMME

DATE: \_\_\_\_\_ JOB NO: **81-066** FIG. NO: \_\_\_\_\_  
 DRAWN BY: \_\_\_\_\_ SCALE: 1:5,000 METRES  
 APPROVED BY: \_\_\_\_\_

**BEMA INDUSTRIES LTD.**

RECEIVED  
 12 OCT 1982  
 MINING DEPARTMENT  
 125 W. 12th St.  
 S.S. 100

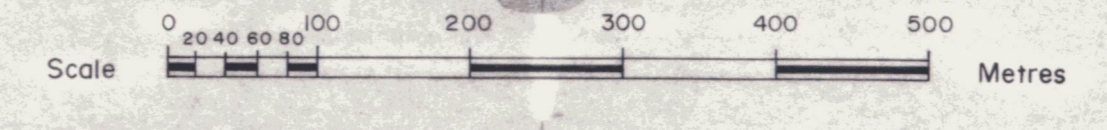
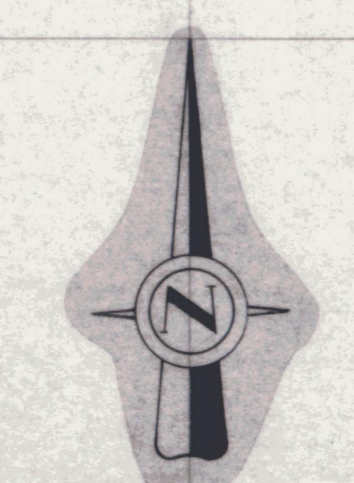
BEMA DRAFTING



SHEET INDEX

3	2	1
4	5	6
11	10	9
12	13	

091387



CANADA TUNGSTEN MINING CORPORATION  
**DUBLIN GULCH Y-T**  
 1981 GEOLOGICAL EXPLORATION PROGRAMME

DATE: \_\_\_\_\_ JOB NO: **81-06 G** FIG NO: \_\_\_\_\_  
 DRAWN BY: \_\_\_\_\_ SCALE: **1:5,000** METRES  
 APPROVED BY: \_\_\_\_\_

**BEMA INDUSTRIES LTD.**

RECEIVED  
 21 OCT 1982  
 MINING DIVISION  
 14 & 15





**LEGEND :**

- Ia Biotite - quartzite schist
- Ib Micaceous quartzite
- Ic Phyllite
- Ic1 Sericite or muscovite phyllite
- Ic2 Graphitic phyllite
- Mineralization
- 23707 Sample no. and site location
- Sample interval
- - - Fault
- Outcrop

**CANADA TUNGSTEN MINING CORP. LTD.**

DUBLIN GULCH  
1981-1982 GEOLOGY, TRENCHING & ASSAY PLAN

**WEST CREEK SHEAR ZONE  
GEOLOGY & ASSAY PLAN**

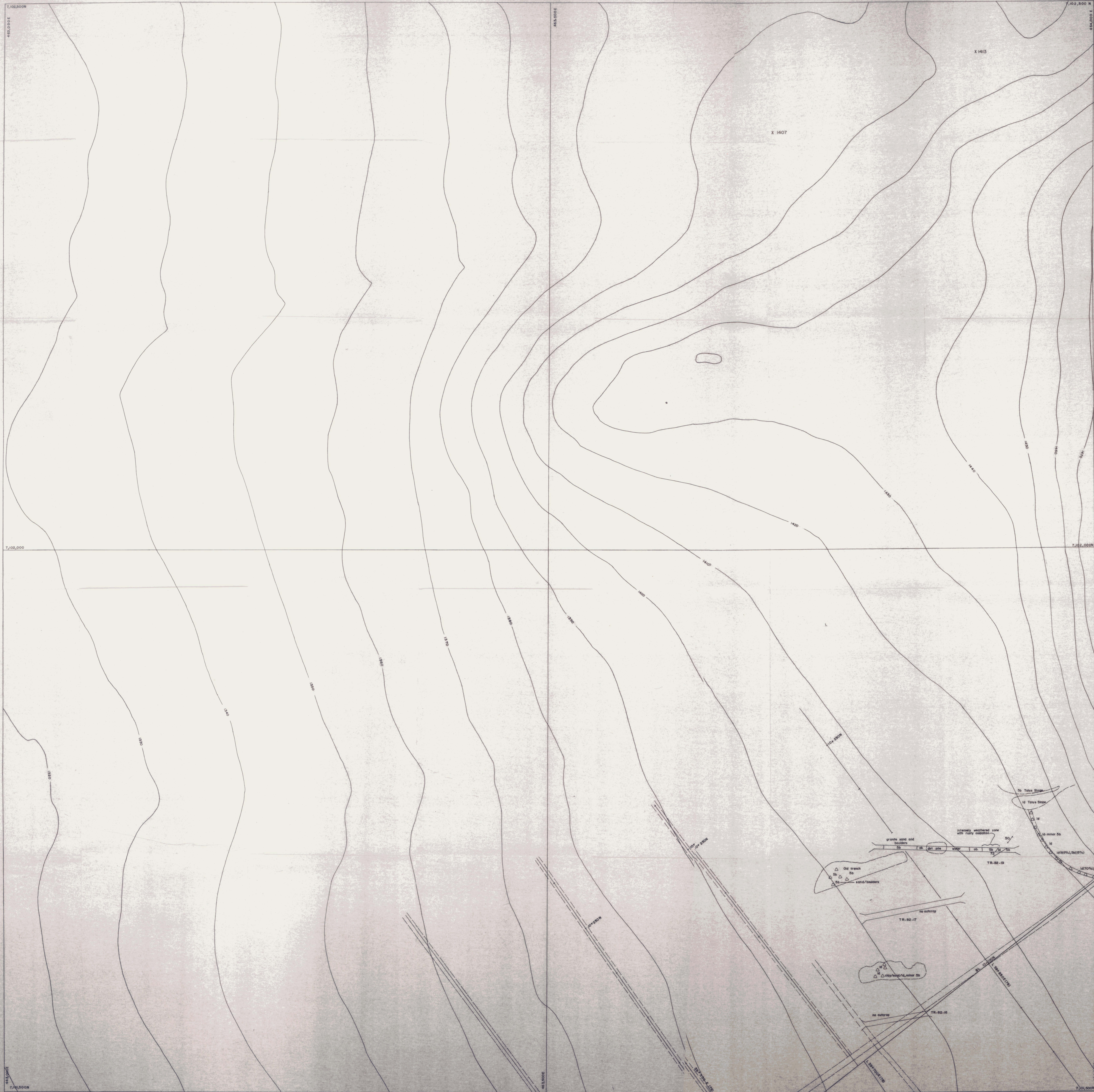
SCALE: 1" = 100' OR 1" = 0.77'

DATE: JUNE, 1982  
DRAWN BY: EDCO LTD.  
REVISED BY:

NTS No. 84  
MAP No. 84  
To accompany report

METRES: 0 1 2 3 4 5  
FEET: 0 1 2 3

091387

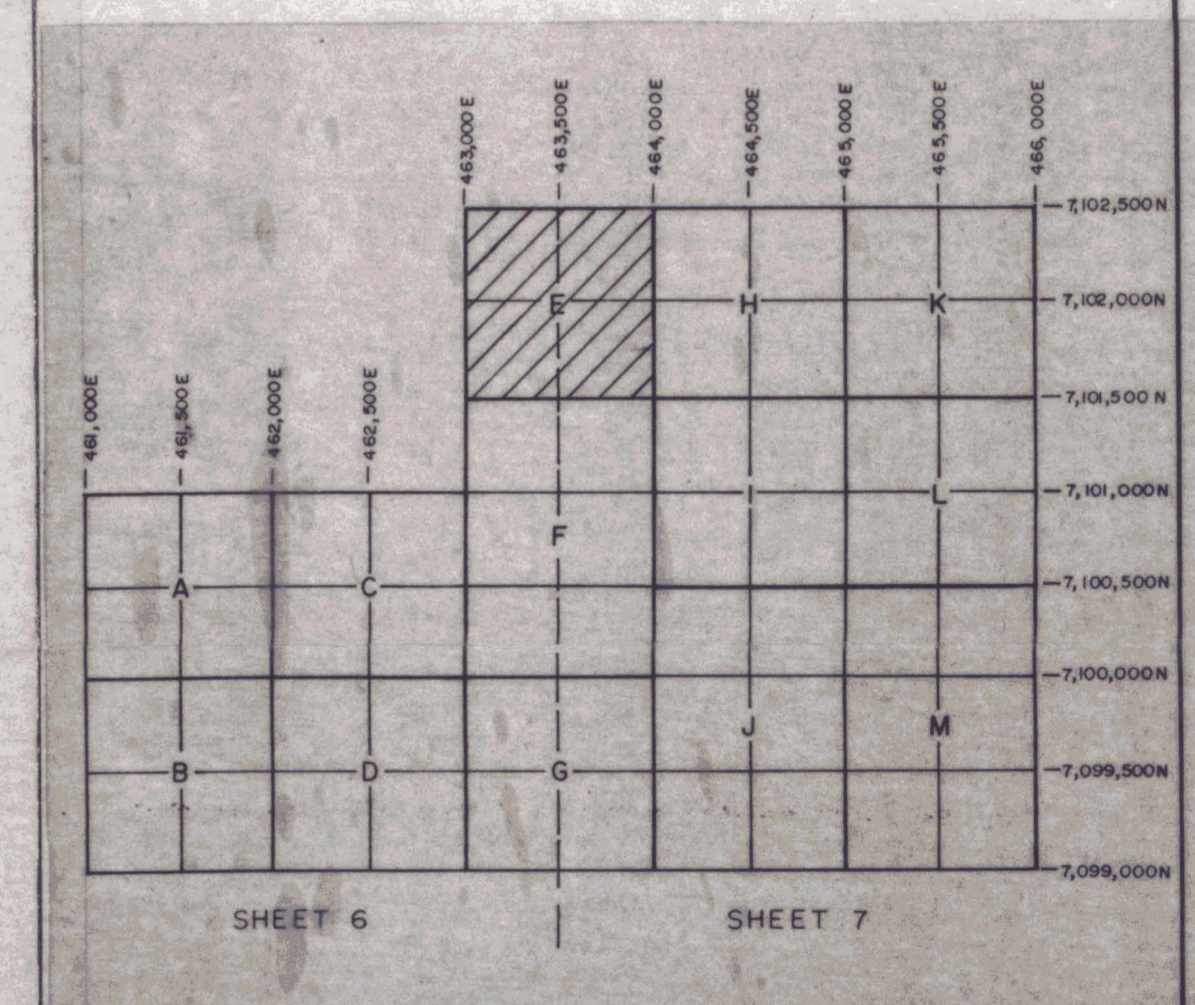


**SYMBOLS**

	SHAFT
	RAISE
	WINZE
	ADIT or TUNNEL
	covered
	QUARRY or MINE
	active
	abandoned
	TRENCH
	closed end
	open end
	FIT
	GRAVEL PIT
	X
	Z
	active
	dominant
	DUMP or TAILINGS
	DOH & NUMBER
	CRH-00 location
	CRH-01 surface projection
	OVERBURDEN DRILL HOLE
	CRH-80 location
	CHIP SAMPLE
	ROCK SAMPLE
	FLOAT
	with rock type
	SURVEY STATION
	TRIANGULATION POINT
	CLAIM POST
	CLAIM BOUNDARY
	ROAD
	CAT TRAIL
	CABIN
	SPRING

**LITHOLOGY**

	TERTIARY
	QUARTZ-ARSENOPYRITE-SCHRODITE VEIN ROCK
	OREACEOUS INTRUSIVE
	CREACEOUS GREENSTONE
	JURASSIC LOWER SCHIST UNIT
	JURASSIC CENTRAL QUARTZITE UNIT
	PRECAMBRIAN GRIT & UPPER SCHIST UNITS
	Gritty quartzite, thick & thin bedded, with/without pelitic laminae
	Micaeous quartzite
	Phyllite
	Muscovite-sericite
	Chlorite
	Graphite
	Interlayered quartzite & biotite schist
	Pyroxene skarn
	Wollastonite quartz skarn
	Marble/limestone
	Massive quartzite



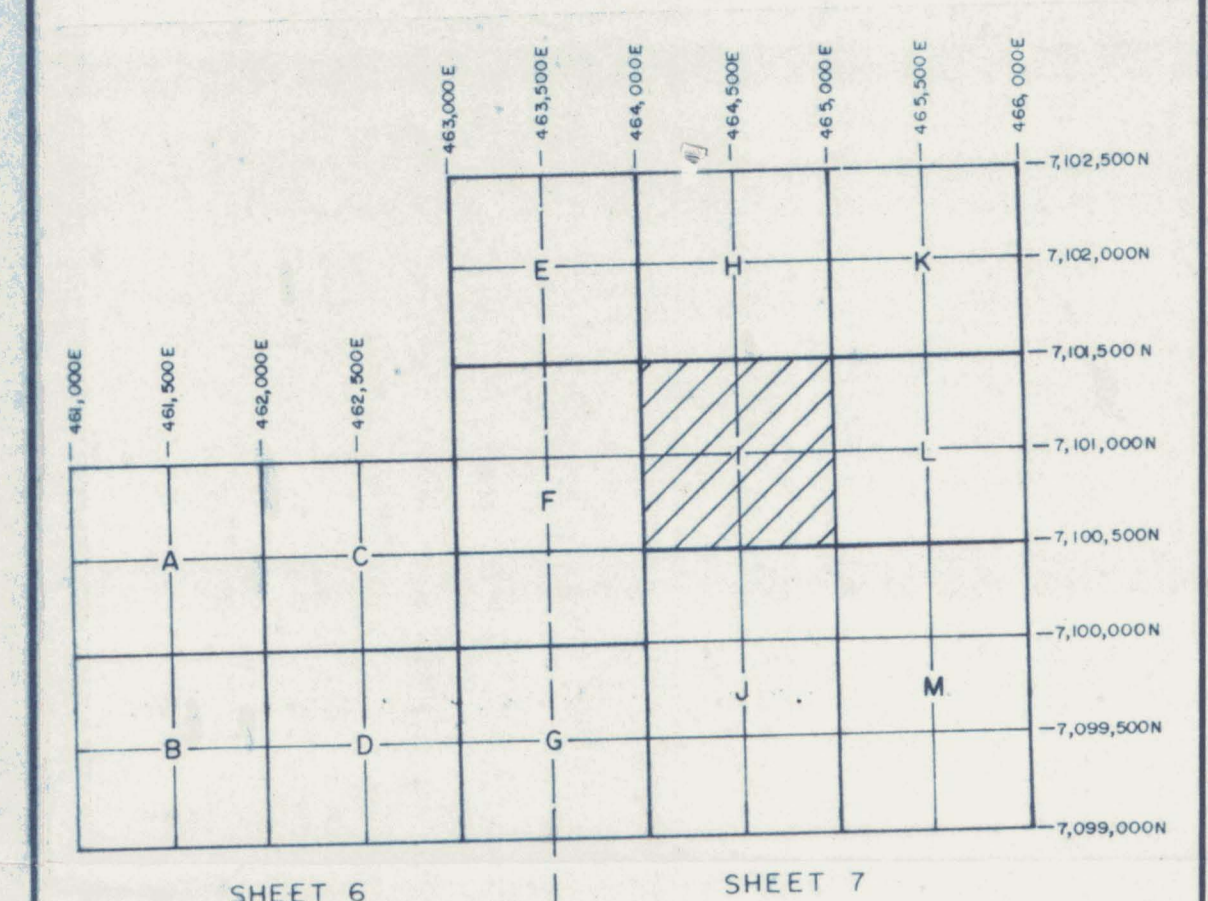
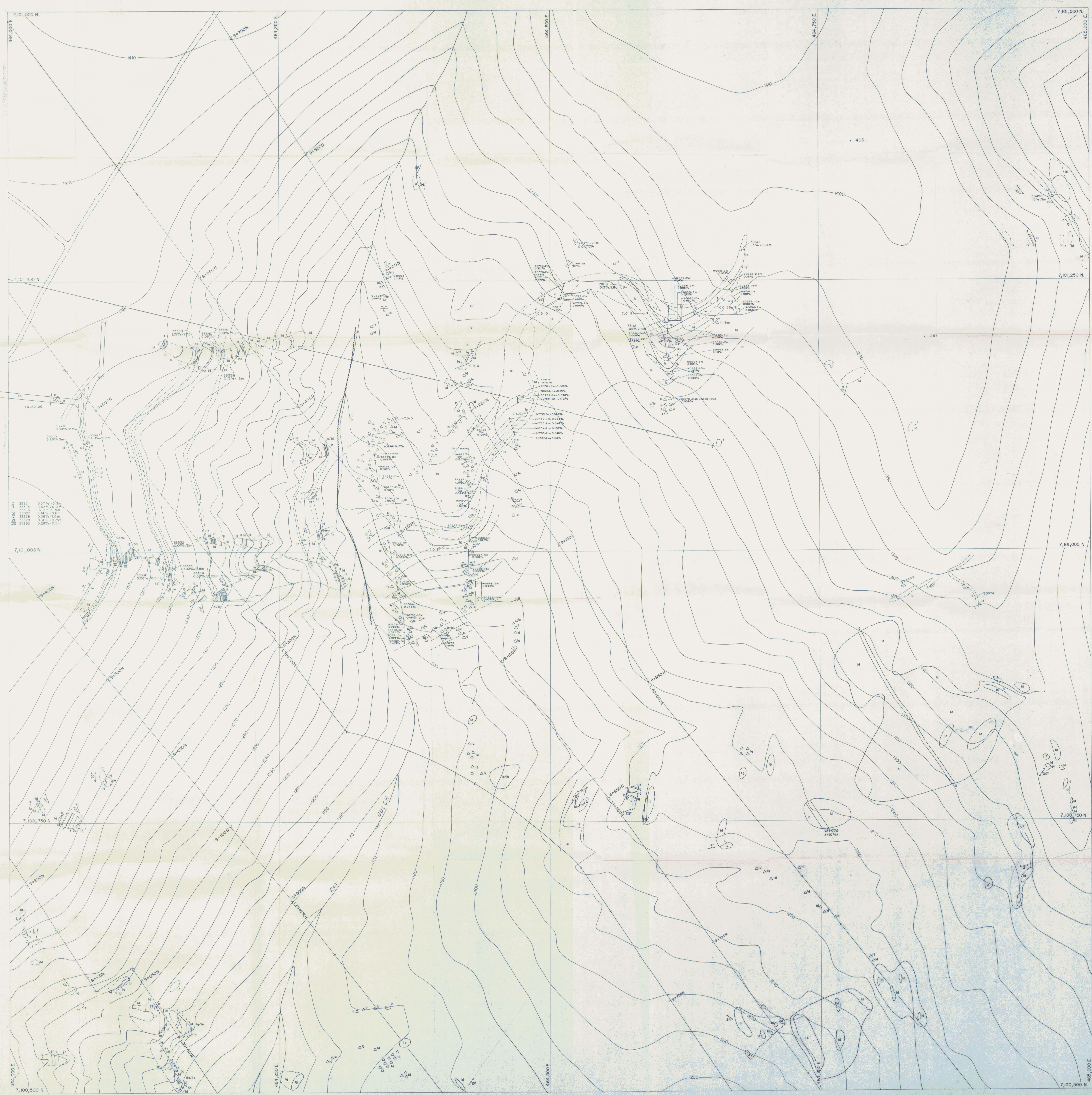
091887

**CANADA TUNGSTEN MINING CORPORATION**  
**DUBLIN GULCH**  
 1982 GEOLOGICAL EXPLORATION PROGRAMME

**GENERAL GEOLOGY**

DATE: SEPTEMBER, 1982	JOB NO: 82-06	FIG. NO: 12
DRAWN BY: J.D.	SCALE: 1:5000	
APPROVED BY:		





### LEGEND

**SYMBOLS**

<p><b>GEOLOGICAL BOUNDARY</b></p> <ul style="list-style-type: none"> <li>— defined</li> <li>- - - approximate</li> <li>- - - assumed</li> </ul> <p><b>LIMIT OF GEOLOGICAL MAPPING</b></p> <ul style="list-style-type: none"> <li>- - -</li> </ul> <p><b>OUTCROP</b></p> <ul style="list-style-type: none"> <li>○</li> </ul> <p><b>FELDSPHER</b></p> <ul style="list-style-type: none"> <li>○</li> </ul> <p><b>TIGUS</b></p> <ul style="list-style-type: none"> <li>○</li> </ul> <p><b>FAULTS</b></p> <ul style="list-style-type: none"> <li>— defined</li> <li>- - - approximate</li> <li>- - - assumed</li> </ul> <p><b>VEIN STRUCTURE</b></p> <ul style="list-style-type: none"> <li>— defined</li> <li>- - - approximate</li> <li>- - - assumed</li> </ul> <p><b>BEDDING</b></p> <ul style="list-style-type: none"> <li>+ horizontal</li> <li>○ vertical</li> <li>- - - inclined</li> <li>- - - overturned</li> </ul> <p><b>FOLIATION</b></p> <ul style="list-style-type: none"> <li>+ horizontal</li> <li>○ vertical</li> <li>- - - inclined</li> <li>- - - unknown</li> </ul> <p><b>ANTICLINE</b></p> <ul style="list-style-type: none"> <li>— defined</li> <li>- - - approximate</li> <li>- - - overturned</li> </ul> <p><b>SYNCLINE</b></p> <ul style="list-style-type: none"> <li>— defined</li> <li>- - - approximate</li> <li>- - - overturned</li> </ul> <p><b>JOINTING</b></p> <ul style="list-style-type: none"> <li>— weak</li> <li>— moderate</li> <li>— strong</li> <li>— weak</li> <li>— moderate</li> <li>— strong</li> </ul> <p><b>MINOR FOLDS</b></p> <ul style="list-style-type: none"> <li>— 10° style &amp; direction</li> <li>— 10°</li> <li>— 10°</li> </ul> <p><b>GLACIAL STRIAE</b></p> <ul style="list-style-type: none"> <li>— movement known</li> <li>— movement unknown</li> </ul>	<p><b>SHAFT</b></p> <ul style="list-style-type: none"> <li>—</li> </ul> <p><b>RAISE</b></p> <ul style="list-style-type: none"> <li>—</li> </ul> <p><b>WINZE</b></p> <ul style="list-style-type: none"> <li>—</li> </ul> <p><b>ADIT or TUNNEL</b></p> <ul style="list-style-type: none"> <li>— covered</li> <li>—</li> </ul> <p><b>QUARRY or MINE</b></p> <ul style="list-style-type: none"> <li>— active</li> <li>— abandoned</li> </ul> <p><b>TRENCH</b></p> <ul style="list-style-type: none"> <li>— closed end</li> <li>— open end</li> </ul> <p><b>PIT</b></p> <ul style="list-style-type: none"> <li>—</li> </ul> <p><b>GRANITE PIT</b></p> <ul style="list-style-type: none"> <li>— active</li> </ul> <p><b>DUMP or TAILINGS</b></p> <ul style="list-style-type: none"> <li>—</li> </ul> <p><b>DIM. NUMBER</b></p> <ul style="list-style-type: none"> <li>— location</li> <li>— surface project</li> <li>— OVERBURDEN DRILL HOLE</li> <li>— QM-RO location</li> </ul> <p><b>CHIP SAMPLE</b></p> <ul style="list-style-type: none"> <li>—</li> </ul> <p><b>ROCK SAMPLE</b></p> <ul style="list-style-type: none"> <li>—</li> </ul> <p><b>FLDGT</b></p> <ul style="list-style-type: none"> <li>— with rock type</li> </ul> <p><b>SURVEY STATION</b></p> <ul style="list-style-type: none"> <li>—</li> </ul> <p><b>TRIANGULATION POINT</b></p> <ul style="list-style-type: none"> <li>—</li> </ul> <p><b>CLAIM POST</b></p> <ul style="list-style-type: none"> <li>—</li> </ul> <p><b>CLAIM BOUNDARY</b></p> <ul style="list-style-type: none"> <li>—</li> </ul> <p><b>ROAD</b></p> <ul style="list-style-type: none"> <li>—</li> </ul> <p><b>CAT TRAIL</b></p> <ul style="list-style-type: none"> <li>—</li> </ul> <p><b>CABIN</b></p> <ul style="list-style-type: none"> <li>—</li> </ul> <p><b>SPRING</b></p> <ul style="list-style-type: none"> <li>—</li> </ul>
---	---

### LITHOLOGY

**TERTIARY QUARTZ-ARSENOPYRITE-SCORODITE VEIN ROCK**

[6]

**CRETACEOUS INTRUSIVE**

[5]

- 5a Aplite/leucocratic granite
- 5b Granodiorite
- 5c Quartz diorite
- 5d Quartz-feldspar porphyry
- 5e Lamprophyre/biotite diorite

**CRETACEOUS GREENSTONE**

[4]

**JURASSIC LOWER SCHIST UNIT**

[3]

- 3a Graphitic phyllite & schist
- 3b Quartz sericite phyllite & schist
- 3c Thinly bedded micaceous quartzite and minor interbedded phyllite

**JURASSIC CENTRAL QUARTZITE UNIT**

[2]

**PRECAMBRIAN GRIT & UPPER SCHIST UNIT**

[1]

- 1a Gritty quartzite, thick and thin bedded, with/without pelitic laminae
- 1b Micaceous quartzite
- 1c Phyllite
- 1d Muscovite-sericite
- 1e Chlorite
- 1f Graphite
- 1g Interbedded quartzite & biotite schist
- 1h Pyroxene skarn (Tungsten Bearing)
- 1i Well-sorted quartz skarn
- 1j Marble / limestone
- 1k Massive quartzite

091007 I

CANADA TUNGSTEN MINING CORPORATION  
**DUBLIN GULCH**  
 1982 GEOLOGICAL EXPLORATION PROGRAMME  
**GENERAL GEOLOGY**

DATE: APRIL, 1982  
 DRAWN BY: C.L.  
 APPROVED BY:

JOB NO. 82-06  
 SHEET NO. 16  
 SCALE: 1:1,000





<p><b>LITHOLOGY</b></p> <p>TERTIARY QUARTZ-AMPHIBOLITE-SCORODITE VEIN ROCK</p> <p>56 Aplite / leucocratic granite</p> <p>56b Granodiorite</p> <p>56c Quartz diorite</p> <p>56d Quartz-Kalbarz porphyry</p> <p>56e Lamprophyre / biotite diorite</p> <p>CRETACEOUS GNEISS</p> <p>30a Graphitic phyllite &amp; schist</p> <p>30b Quartz sericite phyllite &amp; schist</p> <p>30c Thick bedded micaceous quartzite and minor interbedded phyllite</p>	<p><b>JURASSIC CENTRAL QUARTZITE UNIT</b></p> <p>12 Grity quartzite, thick &amp; thin bedded, with / without pelitic laminae</p> <p>12b Miscellaneous quartzite</p> <p>12c Phyllite</p> <p>12d Interbedded quartzite &amp; biotite schist</p> <p>12e Pyroxene schist</p> <p>12f Micaceous quartz schist</p> <p>12g Marble / limestone</p> <p>12h Massive quartzite</p>	<p><b>SYMBOLS</b></p> <p><b>GEOLOGICAL BOUNDARY</b></p> <p>defined</p> <p>approximate</p> <p>assumed</p> <p>LIMIT OF GEOLOGICAL MAPPING</p> <p>WEDGE</p> <p>OUTCROP</p> <p>FELSPHERMER</p> <p>QUARRY or MINE</p> <p>TRENCH</p> <p>TAILS</p> <p>FAULTS</p> <p>defined</p> <p>assumed</p> <p>VENN STRUCTURE</p> <p>defined</p> <p>assumed</p> <p>BEEDING</p> <p>horizontal</p> <p>vertical</p> <p>inclined</p> <p>overturned</p>	<p><b>SHAFT</b></p> <p>28</p> <p>SAISE</p> <p>29</p> <p>WEDGE</p> <p>25</p> <p>ADIT or TUNNEL</p> <p>covered</p> <p>QUARRY or MINE</p> <p>active</p> <p>abandoned</p> <p>TRENCH</p> <p>closed end</p> <p>open end</p> <p>PIV</p> <p>GRAVEL PIT</p> <p>active</p> <p>abandoned</p> <p>DUMP or TAILINGS</p> <p>location</p> <p>location</p> <p>location</p> <p>location</p> <p>location</p>	<p><b>FOLIATION</b></p> <p>horizontal</p> <p>vertical</p> <p>inclined</p> <p>overturned</p> <p>ANTICLINE</p> <p>defined</p> <p>assumed</p> <p>overturned</p> <p>SYNCLINE</p> <p>defined</p> <p>assumed</p> <p>overturned</p> <p>JOINTING</p> <p>weak</p> <p>moderate</p> <p>strong</p> <p>included</p> <p>moderate</p> <p>strong</p> <p>MINDER FOLDS</p> <p>strike &amp; direction</p> <p>GLACIAL STRAIE</p> <p>horizontal scour</p> <p>moderate scour</p> <p>strong scour</p>	<p><b>CHIP SAMPLE</b></p> <p>ROCK SAMPLE</p> <p>FLAT</p> <p>with rock type</p> <p>SURVEY STATION</p> <p>TRIANGULATION POINT</p> <p>CLAIM POST</p> <p>CLAIM BOUNDARY</p> <p>ROAD</p> <p>CAT TRAIL</p> <p>CASH</p> <p>SPRING</p>	<p>091387</p> <p>CANADA TUNGSTEN MINING CORPORATION DUBLIN GULCH 1982 GEOLOGICAL EXPLORATION PROGRAMME</p> <p><b>GENERAL GEOLOGY</b></p> <p>DATE: SEPTEMBER, 1982    JOB NO: 82-06    FIG. NO: 19</p> <p>DRAWN BY: JG    SCALE: 1:5000</p> <p>APPROVED BY: M</p> <p>SHEET 6    SHEET 7</p>
---	--	--	---	--	--	--