

Suite 200, 4299 Canada Way, Burnaby, B.C. V5G 1H4  
Telephone (604) 437-9491

ASSESSMENT REPORT  
DIAMOND DRILLING PROGRAM  
ON THE  
LALA #1 AND LALA #2 GROUPS OF MINERAL CLAIMS  
in the  
Dawson Mining District, Yukon  
N.T.S. 116B/14  
Latitude 64°55'N  
Longitude 139°15'W

Claims Grouped as:

- (1) LALA #1: LALA 1, 3-4, 6, 8, 11-13, 43-46, 51-54  
(Record Nos. Y99987, Y99989-Y99990, Y99992,  
Y99994, Y99997, YA2000-YA2001, YA2029-YA2032,  
YA2037-YA2040)
- (2) LALA #2: LALA 5, 7, 9-10, 14-19, 21, 23, 47-48, 56-57  
(Record Nos. Y99991, Y99993, Y99995-Y99996,  
YA2002-YA2007, YA2009, YA2011, YA2033-YA2034,  
YA2042, YA2068)

by  
Colin V. Dyson, P.Eng.

Work Done: July 2 to July 13, 1977

Date: September, 1977

Owner: Union Miniere Explorations and  
Mining Corporation Limited

Office of The Supervising Mining Recorder  
**OCT 20 1977.**  
**WHITEHORSE**  
**Yukon Territory**

RECEIVED  
**OCT 17 1977**  
MINING RECORDER  
LAND AGENT  
DAWSON, Y.T.  
I.A. & N.D.

This report has been examined by the  
Geologist and is recommended to be recom-  
mended to the Board of Lands and Minerals  
and a return made to the amount of  
\$ \_\_\_\_\_

Resident Geologist or  
Resident Mining Engineer

Considered as representation work under  
Section 53 (4) Yukon Quartz Mining Act.

Commissioner of Yukon Territory

CONTENTS

	Page
INTRODUCTION . . . . .	1
CLAIM GROUPINGS . . . . .	1
DIAMOND DRILLING . . . . .	2
Support Logistics . . . . .	2
Drilling . . . . .	2
APPENDIX I - Drill Record, LALA 77-1	
APPENDIX II - Drill Record, LALA 77-2	
APPENDIX III - Statement of Costs	
APPENDIX IV - Statement of Personnel	

Figures

	following page
FIGURE 1 - LALA Claims, Location Map, 1/250,000. . . . .	1
FIGURE 2 - LALA Claims, Drill Hole Locations and Claim Groupings, 1" approx. 1/2 mile . . . . .	2

ASSESSMENT REPORT ON A DIAMOND DRILL PROGRAM  
ON THE LALA #1 AND #2 GROUPS OF MINERAL CLAIMS

INTRODUCTION

The LALA claims are located at latitude 64°55'N and longitude 139°15'W within the Dawson Mining District, Yukon. They lie approximately eight miles west-northwest of Kit Lake and twenty-six miles west of Chapman Lake and the Dempster Highway and are accessible via helicopter (Figure 1).

The drill crew, composed of four drillers plus a foreman, camp supplies and drill equipment (Longyear-24 drill) were mobilized via helicopter onto the claims on July 2, 1977 and demobilized via helicopter to the UMEX base camp, at Mile 68 Dempster Highway, on July 13, 1977. The drill program was under the direct supervision of Mr. D. Christie (geologist, UMEX, who was on the property from July 2-13, 1977) who logged the core and who in turn was under the supervision of Mr. C.V. Dyson, P.Eng.

CLAIM GROUPINGS

A total of 32 mineral claims were grouped as the LALA #1 and LALA #2 groupings to which four years of assessment work were applied.

LALA #1:	Claim	Record Nos.	Expiry Date
	LALA 1	Y99987	July 22, 1982
	LALA 3-4	Y99989-Y99990	July 22, 1982
	LALA 6, 8	Y99992-Y99994	July 22, 1982
	LALA 11	Y99997	July 22, 1982
	LALA 12-13	YA2000-YA2001	July 22, 1982
	LALA 43-46	YA2029-YA2032	July 22, 1982
	LALA 51-54	YA2037-YA2040	July 22, 1982
LALA #2:	Claim	Record Nos.	Expiry Date
	LALA 5, 7	Y99991, Y99993	July 22, 1982
	LALA 9-10	Y99995-Y99996	July 22, 1982
	LALA 14-19	YA2002-YA2007	July 22, 1982
	LALA 21, 23	YA2009, YA2011	July 22, 1982
	LALA 47-48	YA2033-YA2034	July 22, 1982
	LALA 56	YA2042	July 22, 1982
	LALA 59	YA2070	August 4, 1982

The claims are owned by Union Miniere Explorations and Mining Corporation Limited for whom the surveys were completed.

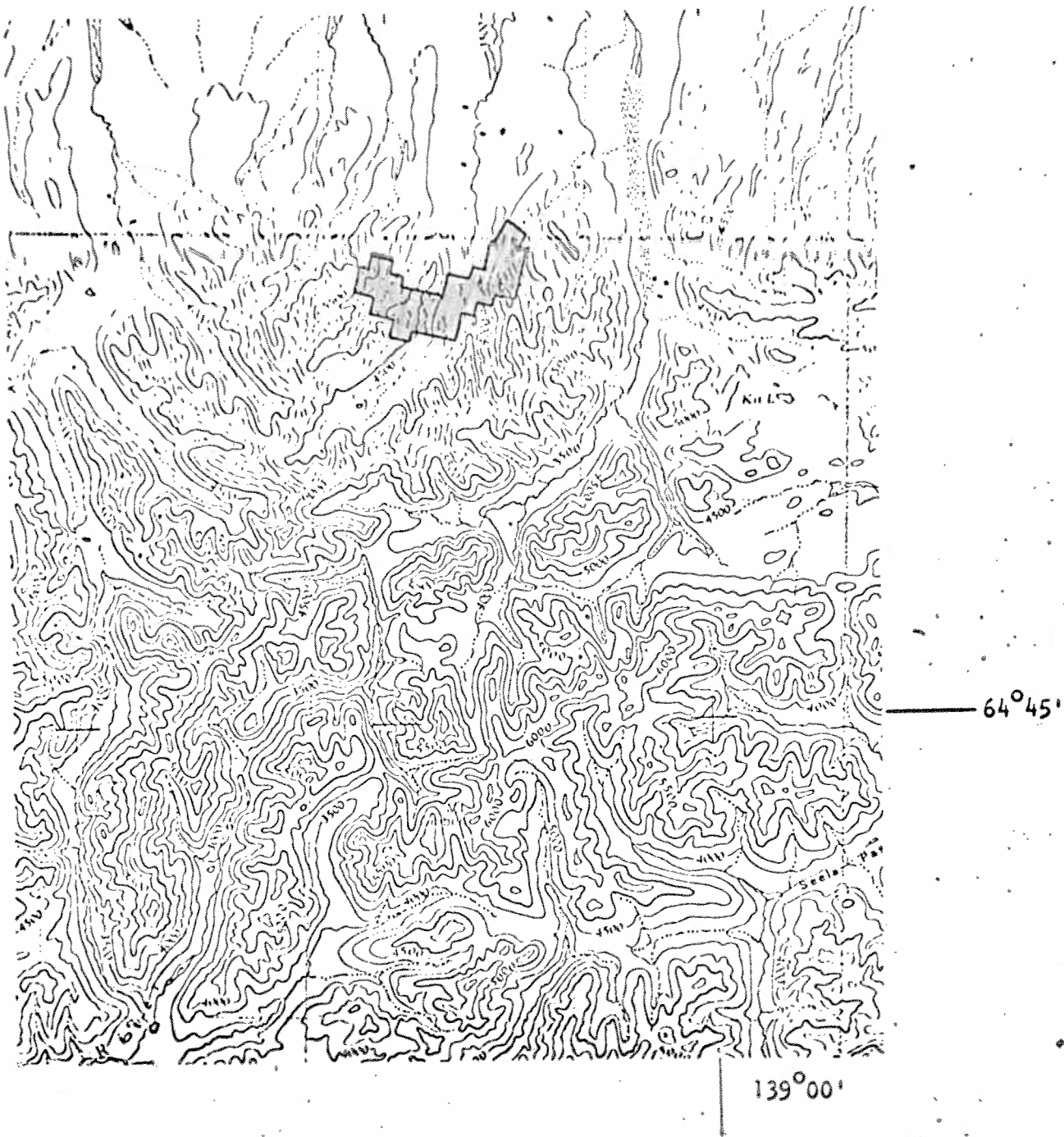


FIGURE 1

LALA CLAIMS

LOCATION MAP, 1/250,000

N.T.S. 116/B

## DIAMOND DRILLING

Support Logistics

The drill/equipment, supplies and personnel were mobilized onto the property by an hourly chartered helicopter (Bell 206-B, Trans North Turbo Air Ltd.) based in Dawson City and a contract chartered helicopter (Bell 47G3B-2, Vancouver Island Helicopters Ltd.) stationed at the UMEX base camp on Mile 68 Dempster Highway, from where supplies were brought. Drill moves on the claims were made by helicopter. The drill, equipment and personnel were demobilized to Mile 68 on the Dempster Highway (UMEX base) by the contract chartered helicopter (Bell 47G3B-2, Vancouver Island Helicopters Ltd.)

Drilling

Location of the drill holes in respect of claims and claim groupings is illustrated in Figure 2 with grid location, altitude and direction given in the attached drill log records in Appendices I and II, respectively. The following table briefly summarizes some of the drilling data.

Hole No.	Date Started	Date Completed	Depth	Core Size	Machine
LALA 77-1	July 3, 1977	July 8, 1977	346 ft.	AQ	Longyear-24
LALA 77-2	July 9, 1977	July 13, 1977	269 ft.	AQ	Longyear-24

Both holes were drilled by UMEX drill crews/equipment contracted from Val D'Or, Quebec. The drill core is stored in the Core Library (DIAND) in Whitehorse, Yukon.

Respectfully submitted,



Colin V. Dyson, P.Eng.



UNION MINIERE EXPLORATIONS AND MINING CORPORATION LIMITED  
 DRILL RECORD.

AREA BLACKSTONE PROJECT Hole No. LALA 77-1  
 Bearing and Dip: S20°W -45°  
 Drilled By: UMEX Val D'Or  
 Machine: Longyear-24  
 D.H. Christie  
 ANOMALY: FE-1  
 Local Coord. ~~XXXXXXXXXXXXXX~~  
 Line 15N - 11E  
 Depth: 346  
 Started: July 3, 1977  
 Completed: July 8, 1977  
 Diam Drill: AQ

Depth		% Core	Description & Lithology	Mineralization	Dip	No. of Sample
From	To					
0	10	Nil	No core - overburden			
10	194	92%	Primarily white jasperoid with approximately 20% brown, sandy dolomite and minor ankerite(?) as angular and sub-angular fragments from 4mm to 15 cm. Fine "healed" fracture or shatter pattern throughout. 5 cm open cavity lined with calcite at 119. Large bleb chalcopyrite in 5 mm quartz-ankerite vein at 70° to core at 160½. 4 mm quartz-ankerite veinlet sub-parallel to core axis at 165. Druzy quartz on fractures near 133. Bands of grey coloured jasperoid at 175-194.			
194	210	70%	Grey siliceous shale and dark grey to black shale, black shale graphitic in part. Hairline to 3 mm calcite veinlets throughout. Chalcopyrite as small blebs at 209½ and on fracture at 207½.			
210	236½	27%	Dark grey calcareous, graphitic shale. Badly broken, poor recovery. Numerous hairline to 5 mm calcite veinlets 1 cm(?) veinlet or fracture filling of calcite with fine blebs chalcopyrite at 311.			
236½	286	66%	Grey and green silicified argillite with some red jasper. Irregular calcite veinlets and fracture fillings sparsely throughout. Pyrite blebs at 244½ and 262½. Few 3 mm pyritehedrons of pyrite 255 to 282. Epidote on fractures at 277 and 281 to 282. Disseminated chalcopyrite in sections, minor on fract.			
286	293	71%	Dark grey shale and grey siliceous siltstone in "plastic" breccia(?) with white calcite filling. Portions of core fine gravel (fault?). 10 cm quartz vein (?) at 291. Confused quartz vein at 292.			



UNION MINIERE EXPLORATIONS AND MINING CORPORATION LIMITED  
DRILL RECORD.

AREA BLACKSTONE PROJECT Hole No. LALA 77-2      Depth: 269      Drilled By: UMEX Val D'Or

Described By:  
D.H. Christie

ANOMALY: FE-2      Bearing and Dip: N35°W -45°

Started: July 9, 1977      Machine: Longyear-24

CLAIM: LALA      Local Coord. ~~XXXXXXXXXXXXXXX~~      Completed: July 13, 1977      Diam Drill: AQ

Line 5N - 22E

Depth		% Core	Description & Lithology	Mineralization	Dip	No of Samples
From	To					
0	14	Nil	No core - overburden			
14	20½	60%	Purple siltstone with some irregular calcite-filled fractures which contain sparse, very fine specular pyrite and pyrite			
20½	21½	100%	Sub-angular and rounded fragments of purple siltstone in dark grey matrix. Matrix contains very fine specular hematite.			
21½	59	90%	Maroon siltstone with lace-like tracteries of white calcite. Very fine specular hematite throughout, most visible as small less than 1 mm fracture fillings in calcite. Specular hematite as extensive fracture fillings at 38½ (with jasper); 47, and 59 (with jasper). Chalcopyrite as blebs in calcite-ankerite veinlets at 28, 32, 39, and 40.			
59	65	98%	Green argillite and pale green siliceous argillite with few thin beds of maroon siltstone. Calcite veinlet with small amount of jasper at 64. 6 mm calcite vein at 50° to core axis at 60.			
65	67	91%	Purple and dark grey siltstone. Core angle approximately 60°. Jasper containing bleb of specular hematite with chalcopyrite at 66 3/4.			
67	93	54%	Green argillite and green siliceous argillite with bands of red jasper. Core angle approximately 60°. Hairline to 3 mm calcite and quartz veinlets throughout. Large calcite fracture filling at 68.			
93	102½	85%	Silicified green argillite, sandy brown dolomite, and red jasper. Rocks fractured and tightly folded. Calcite and ankerite fracture fillings common to 20% of core.			

Depth		% of Core	Description & Lithology	Mineralization	Dip	No. of Sample
From	To					
102½	111½	100%	Mostly maroon siltstone with some sections mottled grey and/or grey-pink. Calcite as lace-like patterns; hairline to 4 mm veinlets and irregular fracture fillings throughout. Very fine specular hematite throughout. Chalcopyrite as small fracture fillings and/or irregular blebs at 103 to 105. As small blebs in calcite fracture filling at 111.			
111½	141½	23%	Green and pale green argillite and siliceous argillite with some red jasper and interbedded maroon siltstone. Specular hematite as very fine stringers rarely throughout. Chalcopyrite as very fine, irregular stringers and blebs at 120; as very fine stringer and small bleb in quartz veinlet in red jasper at 126; as small bleb in calcite fracture filling at 126½. Malachite on fractures and in 3" section of gouge at 127. Pyrite and chalcopyrite on bedding plane adjacent to red jasper at 129. Maroon siltstone with lace-like fracture fillings and fine veinlets of white calcite. Very fine specular hematite irregularly throughout. Green and pale green silicified argillite with bands of red jasper and few thin beds purple siltstone. Small veins, veinlets and fracture fillings of calcite and quartz throughout. Pyrite and/or specular hematite usually in red jasper. Chalcopyrite fracture fillings with minor pyrite 166 to 167. Chalcopyrite fracture fillings in red jasper at 168½.			
141½	149	92%	Grey, siliceous and black shale with minor graphite in black shale. Chalcopyrite as small blebs in quartz-calcite fracture filling at 215 3/4. Highly siliceous grey rock with white quartz in open fractures. Black and grey shale, considerable calcite and quartz as veins and fracture fillings in recovered core; minor graphite. Return water very black while drilling (graphite).			
149	194	65%				
194	224	49%				
224	242	11%				
242	269	13%				

END OF HOLE

APPENDIX III

STATEMENT OF COSTS

LALA 77-1 on the LALA 8 claim in the LALA #1 grouping

Field

Drilling - 346 feet AQ drilling @ \$18/ft	\$ 6,228.00
Helicopter Transportation -	
Bell 206-B Jet Ranger, 9.2 hours @ \$325/hr	2,990.00
Bell 47G3B-2, 8 hours @ \$160/hr	1,280.00
Supervision - D. Christie, July 2-8, 7 days @ \$70/day	490.00
- C.V. Dyson, July 2, 1 day @ \$135/day	135.00
Accommodations - 8 man-days @ \$12/day	<u>96.00</u>
TOTAL	<u><u>\$11,219.00</u></u>

(4 years assessment applied per claim over the 16 claim grouping requires expenditures of at least \$6,400)

LALA 77-2 on the LALA 5 claim in the LALA #2 grouping

Field

Drilling - 269 feet AQ drilling @ \$18/ft	\$ 4,842.00
Helicopter Transportation -	
Bell 47G3B-2, 16 hours @ \$160/hr	2,560.00
Supervision - D. Christie, July 9-13, 5 days @ \$70/day	350.00
- C.V. Dyson, July 9, 1 day @ \$135/day	135.00
Accommodations - 6 man-days @ \$12/day	<u>72.00</u>
TOTAL	<u><u>\$ 7,959.00</u></u>

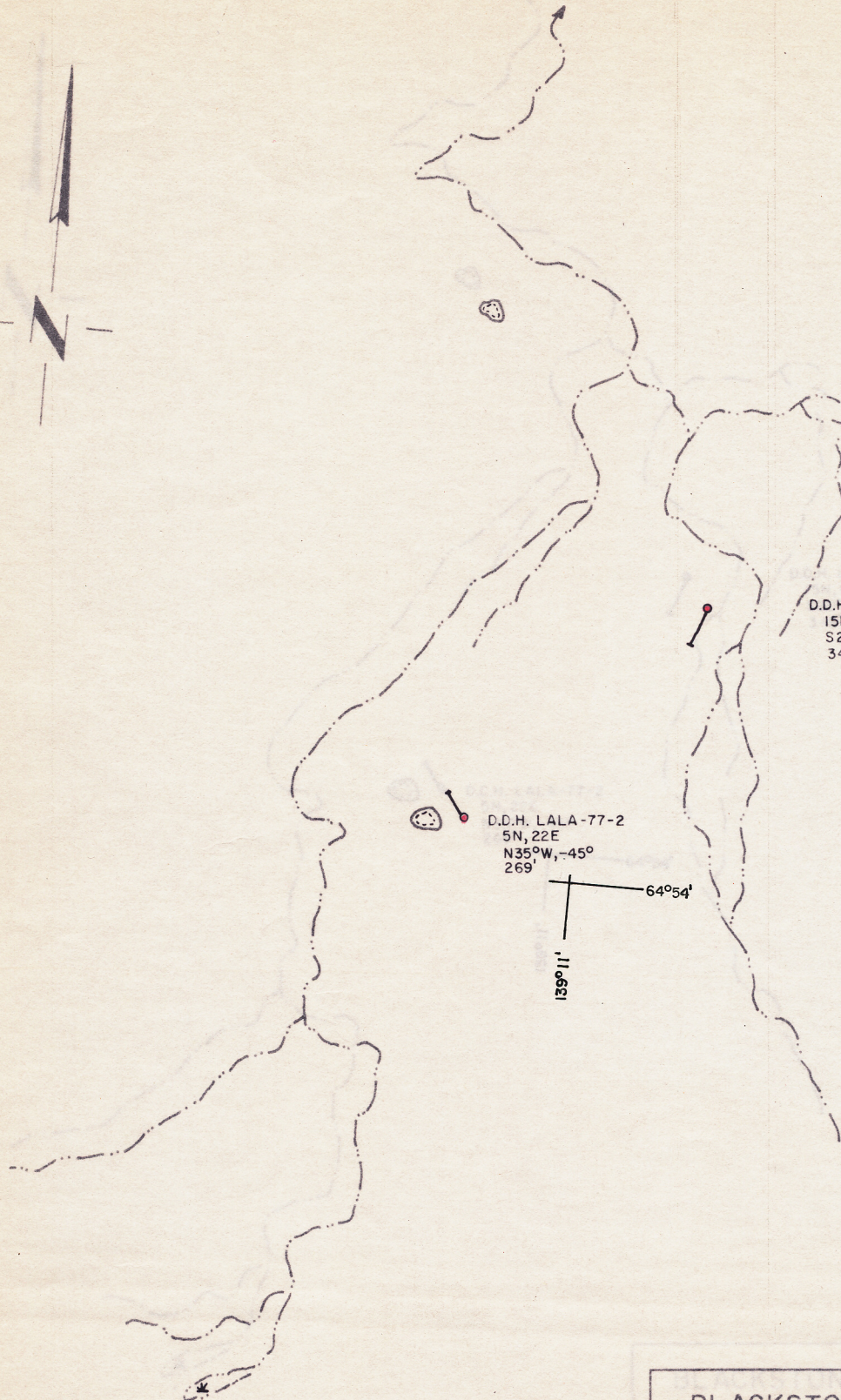
(4 years assessment applied per claim over the 16 claim grouping requires expenditures of at least \$6,400)



APPENDIX IV

STATEMENT OF PERSONNEL

C.V. Dyson	Geologist	3814 West 15th Avenue Vancouver, B.C. V6P 2Z9
D. Christie	Geologist	1117 East Houghton Avenue Houghton, Michigan 49931
UMEX - Val D'Or	Drill Contractors	1068 7e Rue Val D'Or, Quebec J9P 3R5



D.D.H. LALA-77-1  
15N, 11E  
S 20°W, -45°  
346'

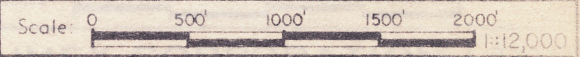
D.D.H. LALA-77-2  
5N, 22E  
N 35°W, -45°  
269'

139°11'  
64°54'

Figure No.

**BLACKSTONE PROJECT 1977  
LALA CLAIMS  
DIAMOND DRILL HOLE  
LOCATIONS**

N.T.S. 1:16B (Dawson)



**UMEX CORPORATION LTD.**

Drawn by: H. Holm  
Date: November, 1977  
Surveyed by: D. Christie

DWG. No.