

**Iluscan Resources Limited**

**MALONEY CREEK**  
**POT #1-48**  
**D.D.H. LOCATIONS**

Scale: 1" = 500'  
 Contour Interval: 50'  
 Drawing No: 10174

2000 N

1000 N

BASE LIN

000 S

0400

325

210

095

000

DRIII HOLE RECORD

Property MALONEY CREEK	District YUKON	Hole No. 76-1
Commenced JUNE 17th, 1976	Location	Tests at - Hor. Comp. 136'
Completed June 21st, 1976	Core Size B Q	Corr. Dip -50o Vert. Comp. 162'
Co-ordinates	True Brg. N5oE	Logged by BOTEL
Objective	% Recov.	Date JUNE 24th, 1976

Claim

T Brg. N5 o E

Collar Dip -50o N

Elev. 3500'

Length 212'

Hole No. Sheet

Footage From To	Description	Sample No.	Length	Analysis ppm, Au ppb			
				Cu	Mo	Ag	Au
15 - 80	Paraschist ? Highly oxidized, foliation 15o to hole ; Faulting, mud seams (Approx. parallel to foliation Strong seticite. mm qtz. veins. Recov. 15' out of 80'	15501	42-42	400	2	1.2	30
		15516	62-70	440	2	1.0	20
80 - 100	Paragneiss - change may be due to less faulting. Recov. 20% Oxidation ends at about 100' Foliation difficult to judge due to pebbly nature of core.	15517	70-80	680	1	1.0	60
		15518	80-90	240	2	0.8	20
		15519	90-100	200	1	0.8	20
		11520	100-110	240	1	0.6	20
100-212	Orthogneiss - Grey banded light & dark. Epidote bands - 149' - 153' 40o Pyrite bands // to foliation and on joints approx. 3% avg. Biotite blotches // to foliation Very good speck chalcopryrite (.01% No visible secondary cu minerals	15521	120	120	1	0.6	20
		15522	120-130	300	1	0.8	20
		15502	130-140	550	5	1.7	30
		15523	140-150	840	1	0.8	20
		15524	150-160	560	1	0.8	60
		15525	160-170	140	1	0.6	20
	SAMPLE: 42' - 62' all fault. Mud & sericite - Au	13951	170-180	128	2	0.4	20
	130 - 140 Au Ag Cu Mo (	13952	180-190	152	2	0.6	20
	190 - 200 " " ( representative core	15503	190-200	144	3	0.7	50
	A L L " " (	13953	200-212	168	1	0.6	20
	Hole abandoned at 212' in fault from 200' Rods stuck etc.						
	ALL YUKON GROUP ROCKS						

# Drill Hole Record

Property MALONEY CREEK District YUKON Hole No. 76-2  
 Commenced June 22 nd, 1976 Location 50 miles W of Carmacks Tests at - Hor. Comp. 373'  
 Completed June 26th, 1976 Core Size Ø Corr. Dip - 50 -49N Vert. Comp. 444'  
 Co-ordinates 8 E-6+ 50S True Brg. N Logged by BOTEL  
 Objective \_\_\_\_\_ % Recov. \_\_\_\_\_ Date \_\_\_\_\_

Claim \_\_\_\_\_  
 T Brg. N  
 Collar Dip - 50o  
 Elev. 3,571'  
 Length 581'  
 Hole No. 76-2 Sheet \_\_\_\_\_

Footage From To	Description	Sample No.	Length	Analysis					
12 - 28'	Brown Quartz porphyry ? Foliated semi parallel to hole . Oxidized Qtz vein 6" 23 1/2 ' - 24' 40o to core 75% recov. Probably Yukon Group								
28 - 57	Brown quartz porphyry becoming more broken and schistose with depth Core appears to be a low grade Sericite schist - gneiss. Only a few relict gtz phenos visible All joints coated with limonitic minerals Joints 70o and also sub parallel to core 75% recov.								
57 - 140	Brown foliated schistose gtz porphyry. 79- 82 Foliated white and brown bands 20o to core 110 " bands 50o to core 120' 80o 122' 70o 134' 45o 138' 45o Qtz-sericite - normal Rec. )85%								
Cont page "2"									

Property MALONEY CREEK

District YUKON

Hole No. 76-2

Commenced

Location

Tests at

Hor. Comp.

Completed

Core Size

Corr. Dip

Vert. Comp.

Co-ordinates

True Brg.

Logged by

Objective

% Recov.

Date

Footage

Description

Sample  
No.

Length

Analysis

From To

140 - 182

Brn foliated qtz.-sericite rock. Prob. derived from qtz. porph.

Oxidized.

Manganese coatings on 45o &amp; 80o joints @ 140-142

Qtz veining very rare py. : 163-165

168-168 1/2

180-180 1/4

Foliation

35o @ 146'

change 35o to 10° @ 147' - 149'

10o 150

10o 159

5o 161

20o 171

60o 182

Relict qtz. phonocrysts @ 150 1/2

182- 205

Gneissic, slightly darker due to increase of ferro mag minerals - less oxidation?

Foliation 85o

Recovery 95%

Cont page 3...

Sheet

Hole No.

Claim

T Brg.

Collar Dip

Elev.

Length

Property MALONEY CREEK District YUKON Hole No. 76-2

Commenced Location Tests at Hor. Comp.

Completed Core Size Corr. Dip Vert. Comp.

Co-ordinates True Brg. Logged by

Objective % Recov. Date

Footage From To	Description	Sample No.	Length	Analysis ppm, Au ppb				
				Cu	Mo	Ag	Au	
205- 232	foliation Grey gneissic textured 85o. Sudden appearance of py-disappearance of sericite. Py. has coatings of blue stain mineral poss. chalcocite but prob. Fe. mineral	15504	205- 215	1030	8	1.4	50	
	Py 2 1/2 - 3% diss	15505	215- 225	1820	61	2.5	70	
	205- 210	15506	260- 270	240	14	0.8	15	
	230- 233	15507	270- 280	600	46	0.6	20	
	Foliation has complete reversals in dip @ 220'	15508	280- 290	390	8	0.6	20	
	and changes from above 85o to 25o @ 223'	15509	290- 300	570	15	1.1	25	
	Joints still strongly coated with limonite but do have pyrite	15510	300- 310	1110	27	1.0	60	
	Joints 45o predom.	15511	310- 320	350	18	0.6	15	
	Recov. 95%	15512	320- 330	455	78	1.1	30	
	SAMPLE 205-215	15513	330- 340	1960	23	1.9	115	
	225-235	15514	340- 350	1801	20	1.8	70	
		15515	350- 360	550	26	1.2	20	
232 - 276	Light grey brown, semi parallel foliation:sericitic	15726	360- 370	510	72	1.4	25	
	decrease in Py ( 1% )	15727	370- 380	510	87	1.3	35	
	black core	15728	380- 390	550	30	1.0	35	
	// Qtz veining 248-250	15729	390- 400	525	46	0.7	35	
	SAMPLE 260- 270	15730	400- 410	940	23	1.1	65	
		15731	410- 420	800	31	1.0	45	
276- 311	Dense cryptocrystalline grey rock with some banding	15732	420- 430	515	15	0.8	50	
	Silicious	15733	430- 440	420	43	1.0	25	
		157	440- 450	430	35	0.7	15	

Cont page 4...

Sheet

Hole No.

Property	District	Hole No. 76-2
Commenced	Location	Tests at Hor. Comp.
Completed	Core Size	Corr. Dip Vert. Comp.
Co-ordinates		True Brg. Logged by
Objective		% Recov. Date

Claim

T Brg.

Collar Dip

Elev.

Length

Hole No. Sheet

Footage From To	Description	Sample No.	Length	Analysis						
cont. d 276- 311	Sericite banding @ 276-279									
	287- 281									
	297-301									
	301 crenulated c̄ py, cp, mo									
	Visible ( .05 cp starting near 281									
	( .05 MoS <sub>2</sub> on 60' joint @ 187									
	( .05 CP; moS <sub>2</sub> 291									
	( .05 Cp 311									
	Oxidation much less but thin limonite coatings on low angle fractures									
	Rock is hard and blocky.									
	SAMPLE 270- 280 : 280-290 : 290-300: 300-310: 310-320									
311- 396	Darker grey rock banded with ferromag minerals ( GREY SIL. TUFF. BIOTITE)									
	Bands dip 25o									
	Fractures still coated with limonite									
	Chalcopyrite & MoS <sub>2</sub> still present in minute amounts									
	Magnetite (diss) at 349'									
	sericite 357' - 359' : 373; 379-380; 383-384									
	325 - 327 : 386-387' : 390;									

Property	District	Hole No. 76-2	Claim
Commenced	Location	Tests at	Hor. Comp.
Completed	Core Size	Corr. Dip	Vert. Comp.
Co-ordinates		True Brg.	Logged by
Objective		% Recov.	Date

Footage From To	Description	Sample No.	Length	Analysis ppm, Au ppb				
				Cu	Mo	Ag	Au	.
cont. 311-396	Fair Py, Cp at 333' Py - 5% otherwise 1 - 2% diss. Also very fine MoS <sub>2</sub> on 80o joint malachite on limonite coated fractures 382: 390 SAMPLE: All 320- 330 ; 330-340: 340-350: 350-360: Fractured semi parallel to core to 396' Py avg 1% Tr. Cp, MoS <sub>2</sub>							
396 - 445	Lt. grey banded Sil Tuff - nice core joints still oxidized Tr, Cp and MoS <sub>2</sub> Lt. brown biotite banding. In general Banding 10o - 40o to core 6" Feldspar porphyry section @ 431-431 1/2 - Note: may be altered tuff. Gradation or corroded contacts, Tr, Cp, malachite Qtz sections. 428' - 429 Visible Cp, MoS <sub>2</sub> on joint 75o @ 444' MoS <sub>2</sub> @ 439' 70o joint Rock generally banded - biotite, gtzy. thin							
445-489	Lt. grey banded sil. tuff Yukon group Py 1 - 2% diss. Skarn sections - 458: 462-463, 471-472 - banded Mo but persistent sericite - Malachite & 462 Limonitic fractures MoS <sub>2</sub> 487. -Dip of banding flattens at 472 1/2 to about 20o from 65o	15735 15736 15737 15738 15739 15740	450- 460 460- 470 470- 480 480- 490 490- 500 500- 510	660 640 200 900 320 220	27 46 40 54 126 14	0.8 0.6 0.4 0.4 0.4 0.4	50 20 20 20 20 20	

# Drill Hole Record



Colour Plot  
& Dips

Property	District	Hole No. 76-2	
Commenced	Location	Tests at	Hor. Comp.
Completed	Core Size	Corr. Dip	Vert. Comp.
Co-ordinates		True Brg.	Logged by
Objective		% Recov.	Date

Claim	T Brg.	Collar Dip	Elev.	Length	Hole No.	Sheet
-------	--------	------------	-------	--------	----------	-------

Footage From To	Description	Sample No.	Length	Analysis ppm, Au ppb			
				Cu	Mo	Ag	Au
489- 535	Lt. grey sil. Tuff Yukon Gp.	15741	510-520	160	50	0.2	20
	Quartzose section 501-523	15742	520-530	410	56	0.6	20
	Banding dips 10o	15743	530-540	112	240	0.4	20
	MoS2 vis @ 512 ; 526 on 45o fr.	* 15744	540-550	260	420	0.4	20
	Minor black ( non metallic min.?) @ 507 1/2 spec.	15745	550-560	200	116	0.4	20
	Py. 1%	15746	560-570	640	130	0.6	20
	Tr. Cp, MoS2 throughout	15747	570-581	540	48	0.6	20
	10o open fracture c̄ qtz vein 1/4" @ 492						
	Tr. Sericite						
535-579	Same rock but very light colored with bands of reddish brown material.						
	Varied dips to bands - maybe caused by minor faults.						
	Vis MoS2 @ 538' // 1/16" qtz vein						
	( 542' coating 10o fract. ( ALL x CUT BANDING )						
	Best MoS2 section ( 543' interesting 10o fract( " " " " )						
	so far. (.05 ( 552' 30o fract X ( " " " " )						
	( 560' minor ( " " " " )						
	Tr. sericite, Tr. Cp. (Recov. 95%)						
	At 574' core returns to normal lt. grey colour.						
579 - 581	Lt. grey sil. tuff. somewhat mottled.						
	MoS2 @ 580						

## Drill Hole Record

*Mascon Resources Limited*

Property MALONEY CREEK

District YUKON

Hole No. 76-3

Commenced JUNE 26th, 1976

Location 50 miles W of Carmacks

Tests at -

Hor. Comp. 96.5'

Completed June 28th, 1976

Core Size B Q

Corr. Dip -50° SW

Vert. Comp. 115'

Co-ordinates 14W- 2+ 60S

True Brg. S.W.

Logged by Crocker

Objective

% Recov.

Date

Claim

T Brg. S.W.

Collar Dip

Elev. 3719'

Length 146

Hole No. 76.3

Footage		Description	Sample No.	Length	Analysis					
From	To									
16'	46'	YUKON GROUP Light grey-brown tuff mostly banded mottled 33' - 40' Yukon group Rec. ) 95%								
		Foliation 30° at 39' 64° at 29'								
		- limonite , oxidized 16'								
		- minor malachite in fractures 18.5' - 19'								
		- minor calcite in 1/4' fracture 31.5'								
		- minor malachite in fractures 32.5' - 34'								
		- " " " " " 38.5'								
		- " " " " " 46'								
46'	89'	- dike ( dark green - possibly oxidized brown)								
		46' - 54' Dark green amygdules ( calcite or zolites)?								
		54' - 69.5' Brown								
		-63' Calcite vienlets @ 60°								
		- minor calcite in fractures over 15'								
		69.5' - 89.5' dark green dike								
		87.5- 89' Breccia of Yukon Fm. fragments								
		1/4" - 1/2" Fault? breccia								
		Rec. ) 95%								
89'	93.5'	- Yukon Fm. - grey tuff, mottled- banded (Si)								



## Drill Hole Record

*Nascan Resources Limited*

Property MALONEY CREEK District YUKON Hole No. 76-4

Commenced June 29th, 1976 Location 50 miles W of Carmacks Tests at Hor. Comp. -

Completed July 6th, 1976 Core Size B O Corr. Dip v Vert. Comp. 563

Co-ordinates OW- 16 + 50N True Brg. Logged by BOTEL

Objective % Recov. Date

Footage From To	Description	Sample No.	Length	Analysis ppm, Au ppb			
				Cu	Mo	Ag	Au
0 - 17	O.B.						
17 - 40	Yukon group - weathered brown with qtz veining Py in qtz.						
40 - 50	Yukon Group - dark grey. poss more argillaceous. Magnetite Minor malachite Py 1% Cp minor foliation - 45o epidote grades into.						
50 - 73	Yukon group- tan broken rock Foliation 40 o Qtz pods Py - Cl. stronger in dark grey sections, 61-72 : 70-70 1/2 Py 2% Cp 1%	13999 13998 13997 13996	55-65 65-75 75-85 85-95	520 300 400 360	6 4 6 16	0.6 0.6 0.6 0.8	20 20 20 20
73- 76	Yukon group - dark grey-black Magnetite Cp 1% ) P 1%						

Claim

T Brg.

Collar Dip

V

Elev.

3,515'

Length

563'

Title No. 42 Sheet



Property	District	Hole No.	76-4		Claim	T Brg.	Collar Dip	Elev.	Length
Commenced	Location	Tests at	Hor. Comp.						
Completed	Core Size	Corr. Dip	Vert. Comp.						
Co-ordinates	True Brg.		Logged by						
Objective	% Recov.		Date						
Footage	Description	Sample No.	Length	Analysis ppm, Au ppb					
From To				Cu	Mo	Ag	Au		
267- 288 1/2	Yukon group- Greenish grey massive tuff- dark spots Py. minor on fractures. Rounded dark spots may be chlorite altered patches. some contain Py, blebs.								
250 1/2- 294	Yukon group- dark banded 40o Py ( 1%	13982	270- 280-	200	22	0.4	20		
		13981	280- 290-	640	11	0.8	20		
294 - 303	Fault zone- red hematite	13980	290- 300-	900	26	1.0	20		
303-307	Yukon group- dark banded- red hematite stronger near fault. some epidote	13979	300- 310-	940	16	1.0	20		
307-353	Yukon group-Banded Bleached? - browns, greys, green cast. minor sulphides.	13978	310- 320-	440	68	0.8	20		
	320- 322 Qtz pod - malachite on fracture.	13977	320- 330-	660	46	0.8	20		
	326 1" Py <sub>1</sub> , MoS <sub>2</sub> vein	13976	330- 340-	360	32	0.8	20		
	limonitic fractures 330-349	13975	340- 350-	280	74	0.4	20		
		* 13974	350- 360-	760	1460	0.6	20		
353-356	Zone of change to dark altered tuff Epidote, chlorite, red hematite.	13973	360- 370-	840	7	0.4	40		
		* 13972	370- 380-	1320	14	0.8	240		
356-385	Yukon group- dark altered tuff - chloritized pyritized c magnetite, Py - 2% assoc. c epidote, and hematite alteration. minor magnetite veins 20o to core Malachite - odd speck - some limonite Cp minor	13971	380- 390-	840	28	0.8	80		
		13980	390- 400-	690	36	0.4	20		
		13969	400- 410-	580	66	0.6	40		
		13968	410- 420-	720	12	0.4	20		
		* 13967	420- 430-	1600	10	0.6	120		
	grades into	13966	430- 440-	1520	22	0.8	100		
385 - 450	Yukon group - dark grey & white semi contorted banded rock - Beds roughly 40o but vary - Py - minor 20o fract.	13665	440- 450-	800	22	0.6			

Colour Plot  
& Dip

Property	District	Hole No. 76-4
Commenced	Location	Tests at
Completed	Core Size	Hor. Comp.
Co-ordinates		Corr. Dip
Objective		Vert. Comp.
		True Brg.
		Logged by
		% Recov.
		Date

Claim	T Brg.	Collar Dip	Elev.	Length
-------	--------	------------	-------	--------

Footage From To	Description	Sample No.	Length	Analysis ppm, Au ppb			
				Cu	Mo	Ag	Au
385-405	Section	13964	450-460	520	28	0.8	60
	410-413 bleached	13963	460-470	320	1260	0.6	60
	415-416 Qtz vein	13962	470-480	200	24	0.6	20
	minor malachite	13961	480-490	160	90	0.4	20
	446-448 Qtz vein	13960	490-500	560	42	0.8	20
	419-423 Py- 5% Some magnetite in 45o @ 20o fract. also diss.	13959	500-510	352	70	0.8	20
	Malachite 415 - 431- 434 - 436	13956	510-520	900	90	0.4	20
	Banding 30o @ 429'	13957	520-530	280	46	0.6	20
450-	Yukon group - greenish speckled massive tuff or flow chloritized	13956	530-540	396	50	0.8	20
	Py ( 1%	13955	540-550	320	18	0.8	20
	462 - 1/6" 20o MoS2 vein	13954	550-563	680	78	1.0	20
	503 - 1/32" " " "						
	469- 1/16" Cp vein remnant						
	Rock becomes more a biotite gneiss after 495						
	MoS2 462- 495 - 503 - 509 -						
	Qtz vein 510- 511 barren						
	551 - 560						
	549 - 553 - light green tuff						
	559-561 " " "						
	MoS2 prefers the light green sections in favour of biotitic rock and may be associated						
	qtz stingers - occurs on outer edges of veins.						
55	563						
	OF HOLE- Biotitic rock						

Sheet

1000 No

Scale

Colour Plot  
& Dips

## Drill Hole Record

**Truscan Resources Limited**

Property MALONEY CREEK

District YUKON

Hole No. 76-5

Commenced JULY 7th, 1976

Location 50 miles W of Carmacks

Tests at

Hor. Comp.

Completed JULY 12th, 1976

Core Size B Q

Corr. Dip V

Vert. Comp. 473'

Co-ordinates 35+ 20E - 125 S

True Brg.

Logged by BOTEL

Objective

% Recov.

Date

Claim

T Brg.

Collar Dip

Elev. 3,719'

Length 473'

Footage		Description	Sample No.	Length	Analysis ppm, Au ppb			
From	To				Cu	Mo	Ag	Au
0	18	O.B						
18	45	Oxidized Yukon Group						Rec. 15%
45	58	Dark alt. Y. Gr.	15483	42-62	200	1	0.6	20
		Foliation 30o	15484	62-82	200	1	0.6	20
		Epidote chlorite	15485	82-102	140	1	0.4	20
58	98	Same but highly oxidized	15486	102-122	80	1	0.4	20
98	116	Yukon group - Qtzite						
		Py 3%						
		Recov. 10%						
		Probably part of fault . Mud washed away.						
116	126	Yukon group ( Fault zone )						
		( sericite schist, oxidized )						
126	144 1/2	Yukon group						
		Foliation 40o						
144 1/2	146	Qtz vein						
146	360	Yukon group: sericite schist unoxidized	15476	150-160	80	1	0.4	20
		Py ( 2% generally coarse Xls	15477	160-180	120	1	0.6	20
		Foliation 40o	15476	170-180	60	1	0.4	20
		162- 2" pyrite	15479	180-190	40	1	0.4	20
		Fault - ( 300- 305 2" py section	15480	190-200	90	1	0.4	20
		( Avg. 3% Py )	15481	200-210	90	1	0.9	20
		Py & Qtz veining increases slightly after 330' core darker	15482	210-220	40	1	0.4	20



## Drill Hole Record

**Truscan Resources Limited**

Property MALONEY CREEK

District YUKON

Hole No. 76-6

Commenced July 12th, 1976

Location 50 miles of Carmacks Tests at -

Hor. Comp.

Completed July 16, th 1976

Core Size B Q

Corr. Dip V

Vert. Comp. 453'

Co-ordinates 20E-9+60S

True Brg.

Logged by BOTEL

Objective

% Recov.

Date

Claim

T Brg.

Collar Dip V

Elev. 3630'

Length 453"

Footage From To	Description	Sample No.	Length	Analysis ppm, Au ppb			
				Cu	Mo	Ag	Au
0- 8	Casing						
8 - 66	Yukon Group. sericite schist oxidized	15498	60-80	400	2	0.8	100
66 -70	Otz vein	15499	80-100	760	2	0.8	240
66-78	Yukon group - Oxidized - broken	15500	100-110	360	1	6.6	60
78-105	Yukon group - Blackish. highly chloritized pyritized ( 5%	15748	110-120	244	2	0.6	20
105-116	Yukon Group - Sheared sericite schist - chlorite	15749	120-130	188	2	0.4	20
116-122	Yukon group - Black (78-105)	15750	130-140	62	2.	0.4	20
	Py ( 5%	15526	140-150	260	1	0.8	20
122-136	Yukon group - Biotite schist with c̄ sericite	* 15527	150-160	1160	2	1.4	80
	Py 1%	15528	160-170	100	2	0.4	20
	Oxidized fractures	15529	170-180	90	2	0.6	20
136-168	Yukon group - Sericite schist - broken, bleached 145-163	15530	190-200	40	2	0.2	20
	Py 5% 140 1/2 - 141	15531	210-220	40	2	0.4	20
	1" Pink calcite 152 1/2	15532	230-240	90	1	0.4	20
168-171	Yukon group - Biotite schist	15533	250-260	80	1	0.4	20
171-189	Yukon group - Sericite schist- Foliation aveg/ 35o	15534	270-280	80	1	0.6	20
189-194	Yukon group - biotite schist - fine grained	15535	290-300	940	2	0.8	20
194-198 1/2	" " - sericite schist	15545	300-310	520	1	0.8	20
198 1/2 - 210	" " - Sericite- biotite chist	15536	310-320	240	2	0.6	20
210-215	" " - Sericite schist	15537	330-340	240	1	0.6	20
	Py(1%	15538	350-360	60	1	0.6	20
215-218	on group - Biotite schist	15539	370-380	20	1	0.2	20







# Rossbacher Laboratory

GEOCHEMICAL ANALYSTS & ASSAYERS

2225 S. SPRINGER AVE.,  
BURNABY, B. C.  
CANADA  
TELEPHONE: 299-6910  
AREA CODE: 604

## CERTIFICATE OF ANALYSIS

BRASCAN RESOURCES LTD.

CERTIFICATE NO. 6118

502-1155 W. Pender Street

INVOICE NO. 6124

TO: Vancouver, B.C.

DATE ANALYSED Aug. 5, 1976.

PROJECT re. Mr. L. Saleken

No.	Sample	pH	Mo	Cu	Ni	Co	Mn	Fe	Pb	Zn	FPB Au	No.
01	13951		2	128					.4		20	01
02	952		2	152					.6		20	02
03	953		1	168					.6		20	03
04	954		78	680					1.0		20	04
05	955		18	320					.8		20	05
06	956		50	396					.8		20	06
07	957		46	280					.6		20	07
08	958		90	400					.6		20	08
09	959		70	352					.8		20	09
10	960		42	560					.8		20	10
11	13961		90	160					.4		20	11
12	962		24	200					.6		20	12
13	963		126	320					.6		60	13
14	964		228	520					.8		60	14
15	965		22	800					.6		60	15
16	966		22	1520					.8		100	16
17	967		10	1600					.6		120	17
18	968		12	720					.4		20	18
19	969		66	580					.6		40	19
20	13970		36	640					.4		20	20
21	971		28	840					.8		80	21
22	972		14	1320					.8		240	22
23	973		7	840					.4		40	23
24	974		146	760					.6		20	24
25	975		74	280					.4		20	25
26	976		32	360					.8		20	26
27	977		46	660					.8		20	27
28	978		68	440					.8		20	28
29	979		16	940					1.0		20	29
30	13980		26	900					1.0		20	30
31	981		11	640					.8		20	31
32	982		22	200					.4		20	32
33	983		18	720					1.0		20	33
34	984		18	200					.8		20	34
35	985		44	220					.6		20	35
36	986		62	360					.8		20	36
37	987		82	320					.6		20	37
38	988		26	740					.6		20	38
39	13989		22	800					.6		20	39
40	STD. 621		12	960					1.2		7	40

Certified by

*P. Rossbacher*

# Rossbacher Laboratory

GEOCHEMICAL ANALYSTS & ASSAYERS

2725 S. SPRINGBROOK AVE.,  
 BURNABY, B. C.  
 CANADA  
 TELEPHONE: 299-6910  
 AREA CODE: 604

## CERTIFICATE OF ANALYSIS

CERTIFICATE NO. 6118

INVOICE NO. 6124

DATE ANALYSED Aug. 5, 1976

ERASCAN RESOURCES LTD.  
 502-1155 W. Pender Street  
 Vancouver, B.C.

PROJECT Att'n. Mr. L. Saleken

No.	Sample	pH	Mo	Cu							PPB Au	No.
01	13990		10	180							20	01
02	991		36	280							20	02
03	992		8	440							20	03
04	993		3	320							20	04
05	994		10	40							20	05
06	995		12	800							40	06
07	996		16	360							20	07
08	997		6	400							20	08
09	998		4	300							20	09
10	999		6	520							20	10
11	74000		14	680							20	11
12	15476		1	80							20	12
13	477		1	120							20	13
14	478		1	60							20	14
15	479		1	40							20	15
16	15480		1	40							20	16
17	481		1	40							20	17
18	482		1	40							20	18
19	483		1	200							20	19
20	484		1	200							20	20
21	485		1	140							20	21
22	486		1	80							20	22
23	487		1	120							20	23
24	488		1	140							20	24
25	489		1	120							60	25
26	15490		2	100							20	26
27	491		2	440							80	27
28	492		1	160							200	28
29	493		1	160							20	29
30	494		1	40							20	30
31	495		1	120							60	31
32	496		1	40							20	32
33	497		1	40							20	33
34	498		2	400							100	34
35	499		2	760							240	35
36	15500		1	360							60	36
37	15516		2	440							20	37
38	517		1	680							60	38
39	15518		2	240							20	39
40	STOG 26		6	20							-	40

Certified by

*P. Rossbacher*

# Rossbacher Laboratory

GEOCHEMICAL ANALYSTS & ASSAYERS

2220 G. BRUNSON STREET,  
BURNABY, B. C.  
CANADA  
TELEPHONE: 299-6910  
AREA CODE: 604

## BRASCAN RESOURCES LTD. CERTIFICATE OF ANALYSIS

502-1155 W. Pender Street

TO: Vancouver, B.C.

CERTIFICATE NO. 6118

INVOICE NO. 6124

PROJECT Att'n Mr. L. Saleken

DATE ANALYSED Aug. 5, 1976.

No.	Sample	pH	Mo ✓	Cu ✓	Ag	PPB Au	No.
01	15519		1	200	.8	20	01
02	520		1	240	.6	20	02
03	521		1	120	.6	20	03
04	522		1	300	.8	20	04
05	523		1	840	.8	20	05
06	524		1	560	.8	60	06
07	525		1	140	.6	20	07
08	526		1	260	.8	20	08
09	527		2	1160	1.4	80	09
10	528		2	100	.4	20	10
11	529		2	90	.6	20	11
12	15530		2	40	.2	20	12
13	531		2	40	.4	20	13
14	532		1	40	.4	20	14
15	533		1	80	.4	20	15
16	534		1	80	.6	20	16
17	535		2	440	.8	20	17
18	536		2	240	.6	20	18
19	537		1	240	.6	20	19
20	538		1	60	.6	20	20
21	539		1	20	.2	20	21
22	15540		4	1200	1.6	100	22
23	541		1	140	.4	20	23
24	542		20	80	.4	20	24
25	543		1	60	.4	20	25
26	544		2	380	.6	20	26
27	15545		1	520	.8	20	27
28	15736		46	640	.6	20	28
29	737		40	200	.4	20	29
30	738		54	400	.4	20	30
31	739		126	320	.4	20	31
32	740		14	220	.4	20	32
33	741		50	160	.2	20	33
34	742		58	440	.6	20	34
35	743		112	240	.4	20	35
36	744		420	260	.4	20	36
37	745		116	200	.4	20	37
38	746		130	640	.6	20	38
39	15747		48	540	.6	20	39
40	STD 922		52	260	.8		40

Certified by P. Rossbach

# Rossbacher Laboratory

GEOCHEMICAL ANALYSTS & ASSAYERS

2220 S. HUNTER AVE.,  
 BURNABY, B. C.  
 CANADA  
 TELEPHONE: 299-6910  
 AREA CODE: 604

## CERTIFICATE OF ANALYSIS

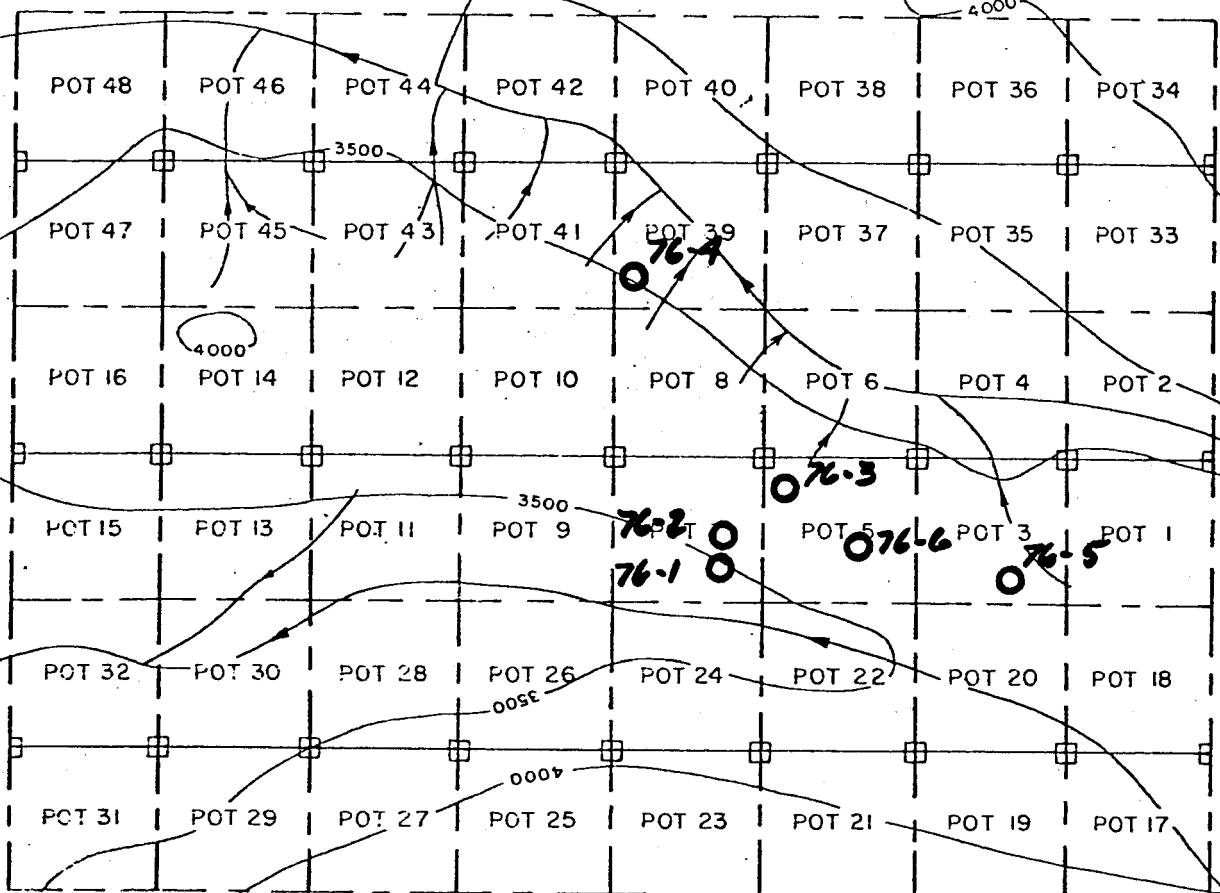
BRASCAN RESOURCES LTD.  
 TO: 502-1155 West Pender Street  
 Vancouver, B.C.  
 PROJECT

re: Mr. L. Saleken.

CERTIFICATE NO. 6118  
 INVOICE NO. 6124  
 DATE ANALYSED Aug 5, 1976.

No.	Sample	pH	Mo ✓	Cu ✓									PPB Au	No.
01	15748		2	244									20	01
02	- 749		2	188									20	02
03	15750		2	62									20	03
04														04
05														05
06														06
07														07
08														08
09														09
10														10
11														11
12														12
13														13
14														14
15														15
16														16
17														17
18														18
19														19
20														20
21														21
22														22
23														23
24														24
25														25
26														26
27														27
28														28
29														29
30														30
31														31
32														32
33														33
34														34
35														35
36														36
37														37
38														38
39														39
40														40

Certified by P. Rossbacher



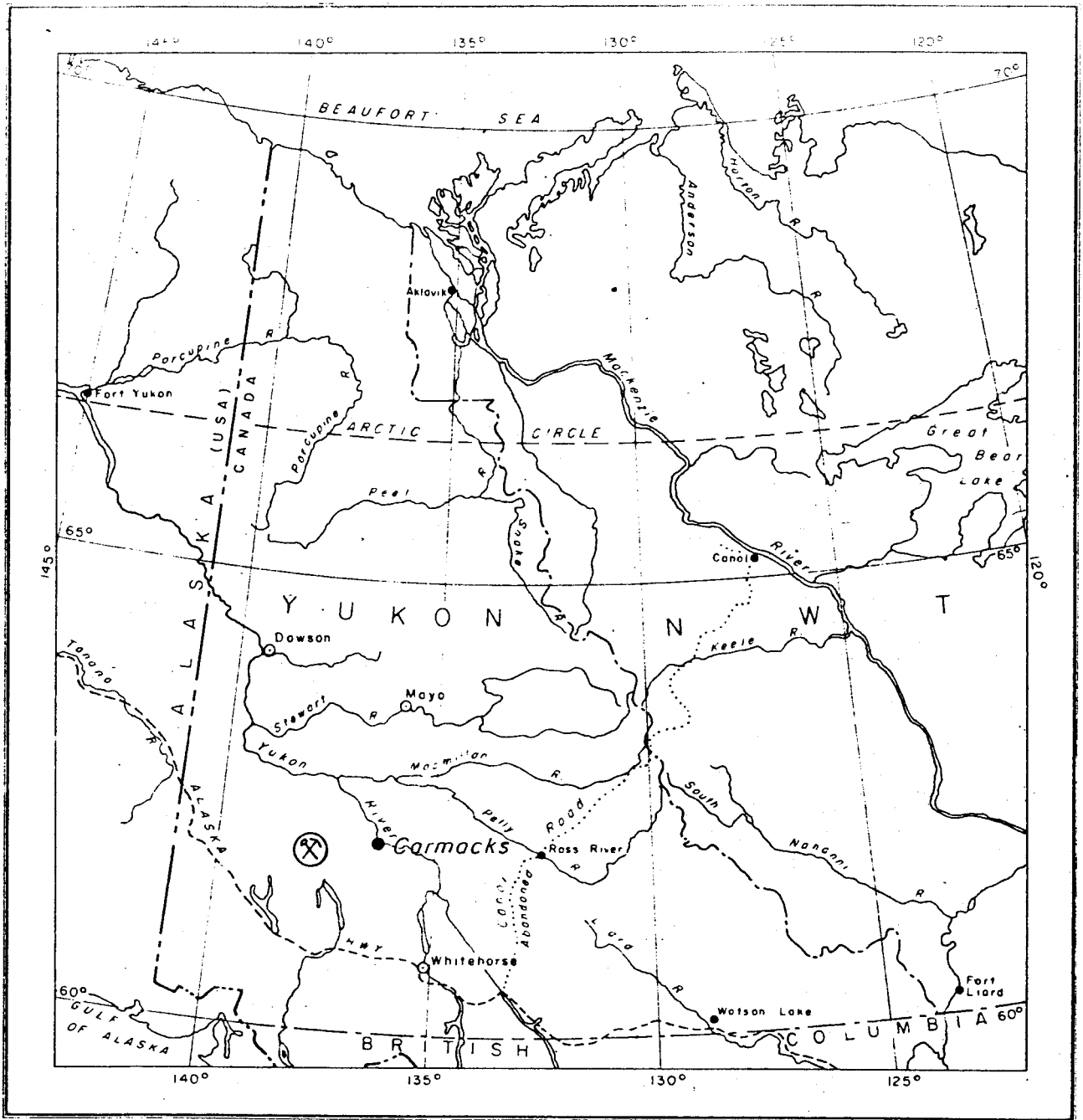
○ D.D.H. LOCATIONS.

MALONEY CREEK COPPER PROSPECT

WHITEHORSE MINING DISTRICT — YUKON

CLAIM MAP

SCALE : 1 inch = 2000 feet

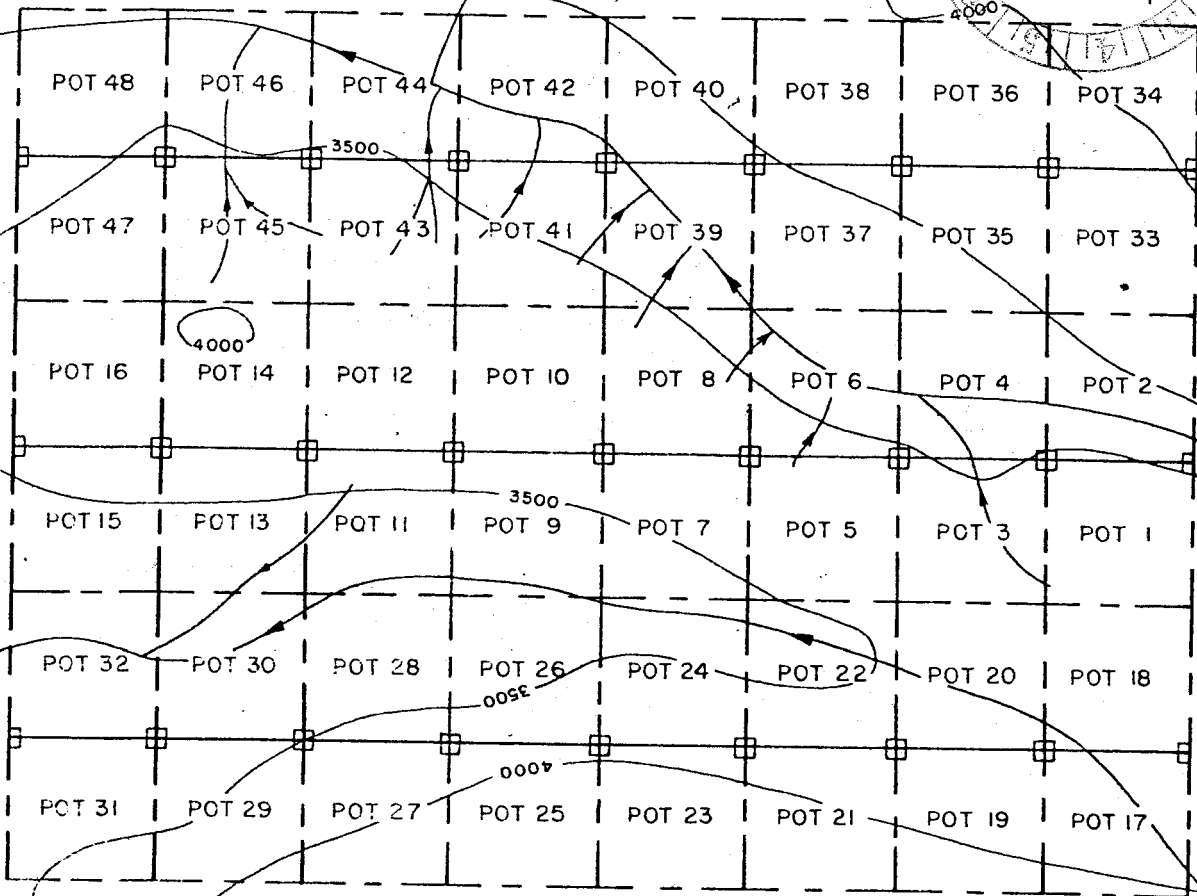
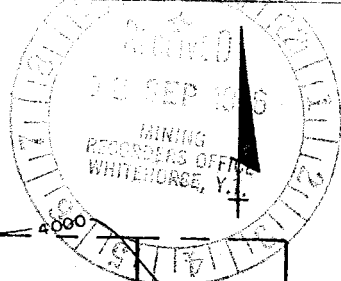


MALONEY CREEK COPPER PROSPECT

WHITEHORSE MINING DISTRICT — YUKON

LOCATION MAP

SCALE 1" = 120 MILES



# MALONEY CREEK COPPER PROSPECT

WHITEHORSE MINING DISTRICT — YUKON

## CLAIM MAP

SCALE : 1 inch = 2000 feet

STATEMENT OF EXPENDITURE

MALONEY CREEK JOINT-VENTURE

Pot # 1 - 48 ( inclusive ) Mineral Claims

Work Period June 1st to July 30th, 1976

Diamond Drilling - 2427 feet (B.Q.W.L.)

Geophysical 1P Survey - 16.2 line miles.

Personnel

W. Botel, Geologist, 14218 Marc Road, Maple Ridge, B.C.

B. Laing, Geological Assistant, 2325 Porcupine Hill Trail, Nanaimo, B.C.

G. Crooker, Geologist, P.O. Box 234, Kereneos, B.C.

L.W. Saleken, Geologist, 6976 Laburnum St, Vancouver, B.C. V6P 5N7

Salaries

W. Botel, P. Eng., Project Geologist.

2 mos @ \$2,000./pm = \$4,000.00

10 days overtime @ \$91./pd. = 910.00 = \$4,910.00

B. Laing, Geological Assistant.

1.5 mos @ \$700./pm. = 1,050.00

10 days overtime @ \$32.00/pd = 320.00 = \$1,370.00

G. Crooker, Geologist.

11 days @ \$50./pd 550.00 = 550.00

L.W. Saleken, Geologist ( Supervisor )

5 days @ \$100./pd 500.00 = 500.00

Sub Total \$7,330.00

Fringe costs @10% 733.00

Total \$8,093.00

2.

Assaying

145 samples for Cu, Mo, Ag, Au \$853.70

Helicopter

Contract Hughes 500c, Cf-AOU,  
Transwest Helicopter Ltd.

84.2 Hrs. 24,461.81

Contract Bill 206 B, FORZ, TNTA Ltd.

3.5 hrs 1,180.40

Fuel 2295 gals @ \$1.06 per gal. 2,432.07

I P Survey

16.2 line miles @ \$342.39 per line mile 5,546.75

Drilling Costs

2427 feet B.O.W.L., Caron Diamond Drilling  
Ltd.

2427 feet @ \$25.63 per foot (all incl.) 62,217.96

TOTAL DIRECT PROJECT COSTS \$104,785.69

  
L.W. Saleken, Geologist.

# Rossbacher Laboratory

GEOCHEMICAL ANALYSTS & ASSAYERS

2225 S. SPRINGER AVE.  
 BURNABY, B. C.  
 CANADA  
 TELEPHONE: 299-6910  
 AREA CODE: 604

EPASCAN RESOURCES LTD.

502-1155 West Pender Street

Vancouver, B.C.

re: Mr. L. Saleken.

DATE Aug. 20, 1976.

INVOICE NO. 6121

CERTIFICATE NO. 6118

ITEM	DESCRIPTION		SUB-TOTAL	TOTAL
120	Geochem. analysis, 3 elements,	@ \$ 1.60	\$ 192.00	
120	Geochem analysis, gold,	2.50	300.00	
120	Rock sample prep.	1.00	120.00	
				\$ 612.00

PAID

CHARGE TO <u>M. SALEKEN</u>			
<u>8251</u>	SUBSIDIARY LEDGER	SUB FEATURE	AMOUNT
	<u>606105000</u>	<u>327</u>	<u>50156</u>
			<u>612</u>
REC'D BY <u>[Signature]</u>	FOR PAY		

ch no - 0849

TERMS - NET 30 DAYS

Brascan Resources Ltd.  
 502 - 1155 West Pender Street  
 Vancouver, B.C.  
 V6E 2P4

INVOICE: A 0001

DATE: July 9, 1976

REPORT NO: 26-387

PROJECT: *Maloney Creek*

W. O. No. A2863

25	Copper, Molybdenum & Silver	Analyses	@ \$ 2.25	\$ 56.25
25	Gold	Analyses	@ \$ 3.50	87.50
25	Sample Preparations		@ \$ 1.25	<u>31.25</u>

\$ 175.00

Less 10% Discount (17.50)

\$ 157.50

25	Retention of Rejects		@ \$ 0.10	2.50
1	Overweight Charge 135 lbs		@ \$ 0.20/lb	27.00
1	Collect Shipping Charge			<u>54.70</u>

\$ 241.70

**PAID**

CHARGE TO				
<i>Maloney Creek</i>				
ACCOUNT	SUBSIDIARY LEDGER	SUB FEATURE	AFE	AMOUNT
9555	605.1014001	327	50061	241.70

*Batch No 12*

JUL 13 1976

THIS IS A PROFESSIONAL SERVICE  
 ACCOUNTS DUE WHEN RENDERED

# E. Caron Diamond Drilling Limited

HEAD OFFICE:  
7 ROUNDEL ROAD  
WHITEHORSE, Y.T. Y1A-3H3  
PHONE 668-2424 - 668-2425  
TELEX 036-8-337

CONTRACT DIAMOND DRILLING

VANCOUVER OFFICE:  
XX 3725 HOWE STREET XX  
VANCOUVER, B.C. V6C 2A9  
PHONE 687-4634

July 18, 1976

Invoice #-144

## IN ACCOUNT WITH:

Brascan Resources Limited,  
Suite 502, 1155 West Pender Street,  
Vancouver, B. C.  
V6E 2P4

Drilling Charges July 1 to 18, 1976

(Mt. Nansen Project)

### Hole: 76-4 x 90° x BQ

#### Reaming Cave

60 man hrs.	@ \$11.75 per hr.	= \$ 705.00	
30 machine hrs.	@ \$7.50 per hr.	= \$ 225.00	\$ 930.00

#### Mud Time

54 man hrs.	@ \$11.75 per hr.	= \$ 634.50	
27 machine hrs.	@ \$7.50 per hr.	= \$ 202.50	\$ 837.00

#### Coring

161 - 500 = 339 ft.	@ \$14.75 per ft.	= \$5,000.25	
500 - 563 = 63 ft.	@ \$15.25 per ft.	= \$ 960.75	\$5,961.00 \$ 7,728.

### Hole: 76-5 x 90° x BQ

#### Moving

36 man hrs.	@ \$11.75 per hr.	= \$ 423.00	
11 machine hrs.	@ \$7.50 per hr.	= \$ 82.50	\$ 505.50

#### Reaming Cave

4 man hrs.	@ \$11.75 per hr.	= \$ 47.00	
2 machine hrs.	@ \$7.50 per hr.	= \$ 15.00	\$ 62.00

#### Waterline

10 man hrs.	@ \$11.75 per hr.	=	\$ 117.50
-------------	-------------------	---	-----------

#### Mud Time

34 man hrs.	@ \$11.75 per hr.	= \$ 399.50	
17 machine hrs.	@ \$7.50 per hr.	= \$ 127.50	\$ 527.00

#### Casing

0 - 30 = 30 ft.	@ \$18.45 (BW) per ft.	=	\$ 553.50
-----------------	------------------------	---	-----------

#### Coring

8 - 473 = 465 ft.	@ \$14.75 per ft.	=	\$6,858.75 \$ 8,624.
-------------------	-------------------	---	----------------------

### Hole: 76-6 x 90° x BQ

#### Moving

26 man hrs.	@ \$11.75 per hr.	= \$ 305.50	
10 machine hrs.	@ \$7.50 per hr.	= \$ 75.00	\$ 380.50

#### Reaming Cave

16 man hrs.	@ \$11.75 per hr.	= \$ 188.00	
8 machine hrs.	@ \$7.50 per hr.	= \$ 60.00	\$ 248.00

# E. Caron Diamond Drilling Limited

HEAD OFFICE:  
7 ROUNDEL ROAD  
WHITEHORSE, Y.T. Y1A-3H3  
PHONE 668-2424 - 668-2425  
TELEX 036-8-337

## CONTRACT DIAMOND DRILLING

VANCOUVER OFFICE:  
XXXXXX HOWE STREET  
VANCOUVER, B.C. V6C 2A9  
PHONE 687-4634

<u>Mud Time</u>			
19 man hrs.	@ \$11.75 per hr.	= \$	223.25
9.5 machine hrs.	@ \$7.50 per hr.	= \$	71.25
			\$ 294.50
<u>Casing</u>			
0 - 8 = 8 ft.	@ \$18.45 (BW) per ft.	=	\$ 147.60
<u>Coring</u>			
7 - 453 = 446 ft.	@ \$14.75 per ft.	=	\$6,578.50
			\$ 7,649.10
<u>Moving Out - (To Carmacks)</u>			
<u>Labour</u>			
126 man hrs.	@ \$11.75 per hr.	=	\$1,480.50
<u>Truck</u>			
17 machine hrs.	@ \$25.00 per hr.	=	\$ 425.00
			\$ 1,905.50
<u>Moving In - (From Carmacks)</u>			
<u>Room/Board Charges</u>			
June 9 - 14/76	Carmacks Hotel Ltd.	=	\$ 406.60
<u>Supplies (For Brascan)</u>			
June 28/76	White Pass Petroleum #29678	= (\$	570.00)
July/76	White Pass Petroleum #139252	= \$	635.70
July 6/76	Yukon Explosives #15536	= \$	162.81
July/76	Caron Tarps 2 @ \$30.00 each (Picked up by Len)	= \$	60.00
July 19/76	White Pass Petroleum #29704	= (\$	240.00)
			\$ 48.5
<u>Freight Charges</u>			
June 14/76	C P Air #018-3118-7380	= \$	13.50
July/76	Caron Truck (Whse to Mt. Nansen) (50 bags Mud) 9 hrs. @ \$20.00 per hr.	= \$	180.00
			\$ 193.50
<u>Board Charge</u>			
July 1 - 17/76	86 man days @ \$15.00 per day	=	\$ 1,290.00
<u>Supplies Chargeable</u>			
2 only 100# Bottles Propane	@ \$81.15 each	= \$	162.30
Groceries (as per list)		= \$	117.99
Tent Frames (as quoted)		= \$	355.00
20 only BQ Core Boxes	@ \$6.00 each (credit)	= (\$	120.00)
189 only Bags of Mud	@ \$10.75 each	= \$	2,031.75
			\$ 2,547.00
<u>Demobilization Charge</u>			
(Re: Clause 10 of Contract)	$\frac{1}{2}$ x \$440.00	= \$	220.00
	$\frac{1}{2}$ x \$700.00	= \$	350.00
			\$ 570.00
<u>Charges to Follow</u>			
Freight Trip to Mt. Nansen (10) Drums JP4 & mud			Nil
Credit on Drums			Nil

(Total Contract = 2429 ft.)

Total Invoice \$30,962.5

48.5  
30 913.9  
*DRILLING COSTS.*  
**30,913.99**

# E. Caron Diamond Drilling Limited

HEAD OFFICE:  
7 ROUNDEL ROAD  
WHITEHORSE, Y.T. Y1A-3H3  
PHONE 668-2424 - 668-2425  
TELEX 036-B-337

CONTRACT DIAMOND DRILLING

VANCOUVER OFFICE:  
XXXXXX 425 HOWE STREET XX  
VANCOUVER, B.C. V6C 2A9  
PHONE 687-4634

June 30, 1976

Invoice #-137

IN ACCOUNT WITH:

Brascan Resources Limited,  
Suite 502, 1155 West Pender Street,  
Vancouver, B. C.  
V6E 2P4

Drilling Charges June 16 - 30, 1976

(Mt. Nansen Project)

Moving In (From Carmacks)

Third Party Charge

June 9-12/76 Ed's Construction Ltd. #140267 = \$1,426.50

Labour

60 man hrs. @ \$11.75 per man hr. = \$ 705.00 \$ 2,131.5

Hole: 76-1 x 50° x BQ

Reaming Cave

30 man hrs. @ \$11.75 per hr. = \$ 352.50  
15 machine hrs. @ \$7.50 per hr. = \$ 112.50 \$ 465.00

Mud Time

2 man hrs. @ \$11.75 per hr. = \$ 23.50  
1 machine hr. @ \$7.50 per hr. = \$ 7.50 \$ 31.00

Standby Time

24 man hrs. @ \$11.75 per hr. = \$ 282.00

Casing

0 - 133 = 133 ft. @ \$18.45 (BW) per ft. = \$2,453.85

Coring

6 - 212 = 206 ft. @ \$14.75 per ft. = \$3,038.50 \$ 6,270.3

Hole: 76-2 x 50° x BQ

Moving

46 man hrs. @ \$11.75 per hr. = \$ 540.50  
18 machine hrs. @ \$7.50 per hr. = \$ 135.00 \$ 675.50

Casing

0 - 31 = 31 ft. @ \$18.45 (BW) per ft. = \$ 571.95

Coring

9 - 500 = 491 ft. @ \$14.75 per ft. = \$7,242.25  
500 - 581 = 81 ft. @ \$15.25 per ft. = \$1,235.25 \$8,477.50 \$ 9,724.9

Hole: 76-3 x 50° x BQ

Moving

32 man hrs. @ \$11.75 per hr. = \$ 376.00  
11 machine hrs. @ \$7.50 per hr. = \$ 82.50 \$ 458.50

JUL 14 1976



# E. Caron Diamond Drilling Limited

HEAD OFFICE:  
7 ROUNDEL ROAD  
WHITEHORSE, Y.T. Y1A-3H3  
PHONE 668-2424 - 668-2425  
TELEX 036-8-337

CONTRACT DIAMOND DRILLING

VANCOUVER OFFICE:  
XX BOX 23 HOWE STREET XX  
VANCOUVER, B.C. V6C 2A9  
PHONE 687-4634

August 15, 1976

Invoice #-167

IN ACCOUNT WITH:

Brascan Resources Limited,  
Suite 502, 1155 West Pender Street,  
Vancouver, B. C.  
V6E 2P4

Re: Drilling Charges June 9 to July 18, 1976 (Mt. Nansen Project)

Freight Charge

July 8/76 Ed's Construction #165194 = \$290.00

Demobilization Charge

Aug/76 Ed's Construction #140103 = \$391.50

Supplies (For Brascan)

July 31/76 Yukon Explosives #15771 = \$ 72.52  
Plus 10% = \$ 7.25

\$ 79.77 *Pickham*

Fuel Drums (Credit)

July 23/76 White Pass Petroleum #29706 = \$210.00  
Aug. 9/76 White Pass Petroleum #29715 = \$420.00

(\$630.00)

Total Invoice \$131.27

**PAID**

*Maloney*

CHARGE TO		<i>Pickham &amp; Maloney Co.</i>			
ACCOUNT	SUBSIDIARY LEADER	S IN FIGURE	APP	AMOUNT	
<i>Pickham</i> 9555	<i>6061040000</i>	<i>206</i>	<i>50056</i>	<i>79.</i>	<i>77</i>
<i>Maloney Co</i> 9555	<i>6061050000</i>	<i>206</i>	<i>50156</i>	<i>51</i>	<i>50</i>

*110-0839*

AUG 26 1976

# E. Caron Diamond Drilling Limited

HEAD OFFICE:  
7 ROUNDEL ROAD  
WHITEHORSE, Y.T. Y1A-3H3  
PHONE 668-2424 - 668-2425  
TELEX 036-8-337

## CONTRACT DIAMOND DRILLING

VANCOUVER OFFICE:  
223-425 HOWE STREET  
VANCOUVER, B.C. V6C-2A9  
PHONE 687-4634

June 15, 1976

Invoice #-132

### IN ACCOUNT WITH:

Brascan Resources Limited,  
Suite 502, 1155 West Pender Street,  
Vancouver, B. C.  
V6E 2P4

Drilling Charges June 9 to 15, 1976

(Mt. Nansen Project)

### Mobilization Charge

(Re: Clause 10 of Contract)  $\frac{1}{2}$  x \$440.00  
 $\frac{1}{2}$  x \$700.00

= \$ 220.00  
= \$ 350.00

\$ 570.00

### Moving In (From Carmacks)

#### Labour

180 man hrs. @ \$11.75 per hr.

= \$2,115.00

#### Truck - Ours

2 machine hrs. @ \$25.00 per hr.

= \$ 50.00

#### Third Party Charge

To Follow

=       

\$2,165.00

### Room/Board Charge

To Follow

### Supplies (Picked up for Brascan).

June 3/76 Builders Supplyland #C16221  
4/76 White Pass Petroleum #171425  
8/76 White Pass Petroleum #136984  
Caron Drums

= \$ 74.08  
= \$ 45.70  
= \$1,334.97  
= \$ 250.68

\$1,705.43

Plus 10% Handling

\$ 170.54

\$1,875.97

### Supplies Chargeable

104 only BQ Core Boxes @ \$6.00 each

=

\$ 624.00

Total Invoice

\$5,234.97

*Ed Saleh*

All DRILLING Costs.

3432

Resources LTD

CHARTERER  
502 - 1155 W. PENDER ST.

BILLING ADDRESS  
VANCOUVER, BC

INVOICE DATE  
23/06/76

A/C TYPE  
206B

AIRCRAFT REGISTRATION C  
FDRZ

FLIGHT DATE  
14 6 76

PURCHASE ORDER NO.

FUEL & OIL-TNTA FUEL USED HRS.-GALS. FROM  
TNTA CUST. 1.0 CUST SUCL 1.3 CHKS BULK

FROM	MILES	HOURS	ZONE	FREIGHT LBS.	NO. OF PASS - REMARKS
CHKS					
MALONEY CR		.8		SLING 800	1 PASS
MOB SITE		.4			
MALONEY CR RET CHKS		1.1		SLING 1000	

CHARGE TO MALONEY CR

SUBSIDIARY LEDGER	SUB FEATURE	AMOUNT
9555	6061050000	311 30156
		77012

SUB	G.L.	AMOUNT	AMOUNT
9/14	9012	74750	2.3 335.00
9/14	5111	2262	

TERMS: ONE PERCENT INTEREST PER MONTH WILL BE CHARGED ON ALL INVOICES NOT PAID WITHIN 30 DAYS OF DATE ISSUED.

WAITING TIME e /HR.  
FUEL: 29 e .78 /GAL. 2262

FUEL: e /GAL.

MEALS & LODGING

OTHER

CHARTERER'S SIGNATURE  
N. S. McKay

PILOT'S SIGNATURE  
H. K. Hager

ENGINEER'S NAME

PAID

TOTAL \$ 770.12

INVOICE

ch no. 0848

502 - 1155 W Pender St  
 BILLING ADDRESS

Vancouver - BC

FUEL & OIL'S TMTA FUEL USED 1.2 HRS.-GALS. FROM  
 TMTA CUST. CTKS - Bulk

1131 770  
 A/C TYPE 206B FDRZ  
 FLIGHT DATE DAY 7 MONTH 2 YEAR 76  
 PURCHASE ORDER NO.

FROM	MILES	HOURS	ZONE	FREIGHT LBS.	NO. OF PASS. - REMARKS
CTKS					
TO MALONEY CR		1.7		600	1 PASS
RET CTKS		.5			

CHARGE TO MALONEY CREEK

ACCOUNT	SUBSIDIARY LEDGER	SUB FATURE	AFF	UNIT
9555	606105000	311	50156	410 28

SUB	G.L.	AMOUNT	APPROV. FOR PAY		
974510	1010	390 00		1.2	325 <sup>00</sup> 390 00
974511	1111	20 28			

TERMS: ONE PERCENT INTEREST PER MONTH WILL BE CHARGED ON ALL INVOICES NOT PAID WITHIN 30 DAYS OF DATE ISSUED.

*AW Sahil*  
 CHARTERER'S SIGNATURE

*W. B. M. 95*  
 PILOT'S SIGNATURE

*H. K. ...*  
 ENGINEER'S NAME

WAITING TIME	e	/HR.	
FUEL: 26	e	78 /GAL.	20 28
FUEL:	e	/GAL.	

MEALS & LODGING  
 OTHER  
**PAID**

TOTAL \$ 410 28

JUL 16 1976 Batch No 12

INVOICE



# TRANSWEST HELICOPTERS (1965) LTD.

2792 NORLAND AVENUE, NORTH BURNABY, B.C. V5B 3A6 CANADA PHONE: AREA (604) 291-7578

Brascan Resources Ltd.,  
#502 - 1155 W. Pender St.,  
Vancouver, B. C.

DATE: July 5, 1976

INVOICE NO.: 564

June 14th	2.9 Hrs.	
June 14th	6.2 Hrs.	
June 15th	10.8 Hrs.	
June 16th	10.6 Hrs.	
June 16th	<u>1.7 Hrs.</u>	
	32.2 Hrs.	
Less Position	<u>1.6 Hrs.</u>	30.6 Hrs.
June 21st	1.0 Hrs.	
June 22nd	<u>3.4 Hrs.</u>	
	4.4 Hrs.	<u>4.4 Hrs.</u>

35.0 Hrs. @ \$ 280.00 per Hr.

\$ 9,800.00

Plus 2.9 Hr. fuel 45.41

Total.....\$ 9,845.41

Helicopter Hughes 500C(AOU)  
Okusako Pilot  
a 9.0

th thanks

CHARGE TO				
MALONRY Creek				
ACCOUNT	SUBSIDIARY LEDGER	SUB FEATURE	AFE	AMOUNT
9555	626105000	809	50156	9,845.41
REC'D BY	CK'D BY	APP'D FOR PAY		

Requested for payment by Coy of



# TRANSWEST HELICOPTERS (1965) LTD.

2792 NORLAND AVENUE, NORTH BURNABY, B.C. V5B 3A6 CANADA      PHONE: AREA (604) 291-7578

Brascan Resources Ltd.,  
#502 - 1155 W. Pender St.,  
Vancouver, B. C.

DATE: July 9, 1976

INVOICE NO.: 566

Flight ticket nos: 03421, 03422, 03423, 03424, 03425,  
03677, 03678.  
June 24 to 30th, 1976

10.9 Hrs. @ \$ 280.00 per hr

\$ 3,052.00

CHARGE TO <i>MALONEY</i>				
ACCOUNT	SUBSIDIARY LEDGER	SUB FEATURE	AFE	AMOUNT
<i>9555</i>	<i>606105000</i>	<i>809</i>	<i>60156</i>	<i>3,052 00</i>
REC'D. BY <i>PC</i>	CK'D. BY	APPR'D. FOR PAY <i>YRU</i>		

Re: Helicopters Hughes 500 (AOU)  
T. Okusako Pilot  
Area 9.0

# PAID

With thanks



# TRANSWEST HELICOPTERS (1965) LTD.

2792 NORLAND AVENUE, NORTH BURNABY, B.C. V5B 3A6 CANADA

PHONE: AREA (604) 291-7578

Brascan Resources Ltd.,  
#502 - 1155 W. Pender St.,  
Vancouver, B. C.

DATE: July 16, 1976

INVOICE NO.: 573

Flight ticket Nos. 03679, 80, 81, 82, 83, 84, 88, 89, 90,  
July 2, - 10, 1976

15.0 Hrs. @ 280.00 per Hrs.

\$ 4,200.00

CHARGE TO <i>Maloney Creek</i>				
NO. OF	SUBSIDIARY	AMOUNT		
	LEDGER			
<i>9555</i>	<i>6061050000</i>	<i>311</i>	<i>50156</i>	<i>4,200.00</i>
REC'D BY <i>EC</i>	CK'D. BY	AMOUNT FOR PAY <i>YMW</i>		

Re: Helicopter Hughes 500C (AOU)  
T. Okusako Pilot  
Area 9.0

With thanks

**PAID**

JUL 20 1976



# TRANSWEST HELICOPTERS (1976) LTD.

2792 NORLAND AVENUE, NORTH BURNABY, B.C. V5B 3A6 CANADA PHONE: AREA (604) 291-7578

Brascan Resources Ltd.,  
#502 - 1155 W. Pender St.,  
Vancouver, B., C.

DATE: July 22, 1976

INVOICE NO.: 583

Flight ticket Nos: 03691, 03692, 03699 & 03726  
July 11th to 18th, 1976

26.3 Hrs. @ \$ 280.00 per Hr.

\$ 7,364.00

CHARGE TO <i>Maloney Creek</i>				
ACCOUNT #	SUBSIDIARY	SUB- FEATURE	AFE	AMOUNT
<i>9555</i>	<i>6011050000</i>	<i>311</i>	<i>50156</i>	<i>7,364 00</i>
REC'D. BY <i>R</i>	CK'D. BY			<i>7,364 00</i>

Re: Helicopter Hughes 500C (AOU)  
T. Okusako Pilot  
Area 9.0

With thanks