

Clark Claims
Clark Lakes, Yukon Territory
1973 Program Report

106-D-2,3
091307

T. R. Gallant
Staff Geologist, Mining Division
Scurry-Rainbow Oil Limited

September 16, 1973

DATE DUE

Sept 30 1973

Table of Contents

	Page
Summary	1
Introduction	2
Location Map	3
Location and Access	4
Historical Review	5
Geology and Mineralization	6
Geology	6
Sulphide Mineralization	7
Exploration Program	9
Adit Driving	9
Drilling	9
Geological mapping and sampling	10
Roadbuilding and trenching	11
Surveying	11
Conclusions	12
Appendix:	
D. D. logs (W54; W55; W57 to W59; W61; W64)	
Adit Plan - Assay - 1" = 40'	
Adit Plan - Geology - 1" = 40'	
Surface Geological Plan 1" = 40'	
Surface Geological Plan 1" = 600'	
D. D. Sections (W54; W55; W57 to W59; W61; W64)	
Surface survey plan showing roads, trenches, and topographic relief 1" = 50'	

Summary:

The Clark Claims, silver, lead, zinc showing of Bullion Mountain Mining Co. Ltd. (N. P. L.), was the subject of an intensive exploration program, conducted under option, by Scurry-Rainbow Oil Limited.

The program, conducted between April and September of 1973, consisted of:

- A. 1493' of drifting and crosscutting with the establishment of drill stations at strategic locations.
- B. 1093' of diamond drilling consisting of seven bore holes to test strike, dip and grade of the mineralized structure.
- C. Surface and underground geological mapping.
- D. Detail transit surveying of underground and surface for correlation and control purposes.
- E. Road building and trenching for access, service and geological mapping.
- F. Detail sampling of mineralized intersections in the adit and diamond drill holes.

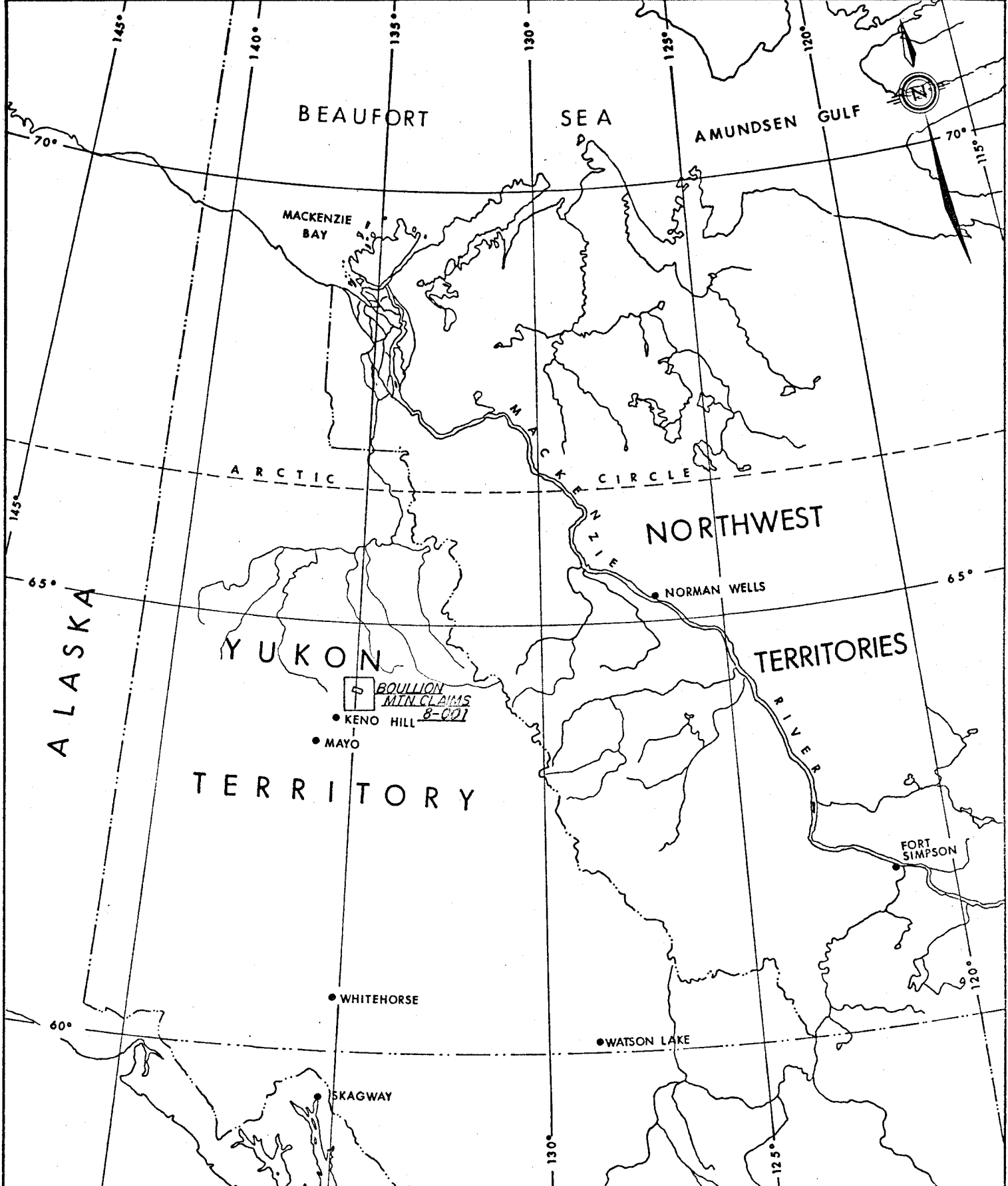
Introduction:

The present report covers the work done on the Clark Lakes' property during 1973 and is based on earlier program results obtained by Bullion Mountain Mining Co. Ltd. and Scurry-Rainbow Oil Limited during 1971 and 1972.

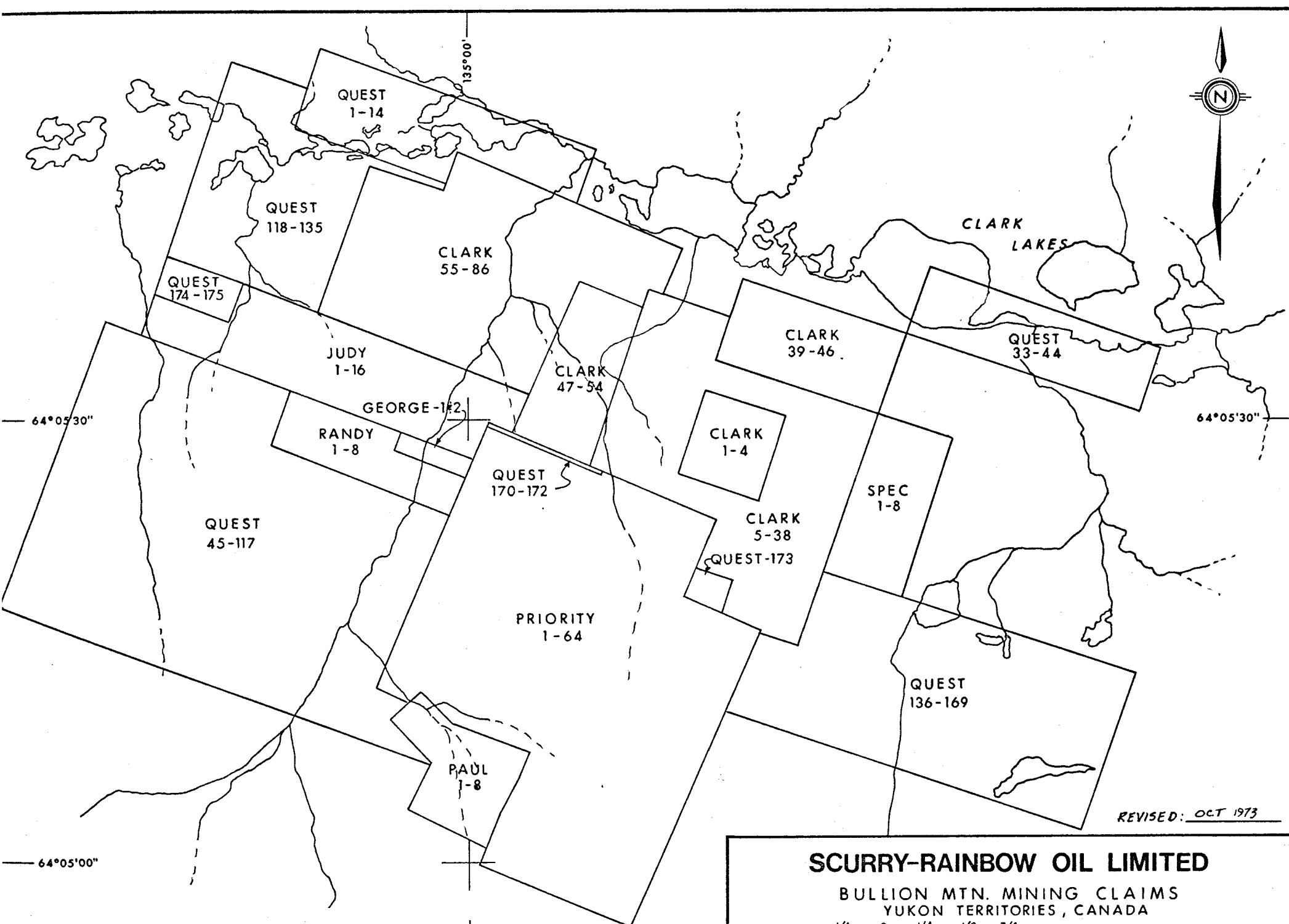
These earlier programs which consisted of various geological, geochemical, geophysical and drilling surveys, succeeded in partially outlining a silver, lead, zinc occurrence, deemed worthy of further work to evaluate its economic potential.

Mobilization for the 1973 season began in early April and the summer's program was concluded September first, pending better ground conditions for removal of mining, drilling and camp equipment.

Major equipment was transported to the property by tractor on winter roads before break up, and subsequent servicing of the operation was conducted by bombardier and aircraft.



SCURRY RAINBOW OIL LIMITED
 MINING DIVISION
 PROPERTY HOLDINGS
 —YUKON, TERRITORY—
 FILE : 8-001-1-1
 S.R.O PROPERTY — □ SCALE 100 0 100
 REVISED : APRIL 23 / 73



Location and Access:

The group of Clark 1-86 mineral claims are located 18 miles north of Keno Hill and south of Clark Lakes which are situated in the Mayo District of the Yukon Territory.

20 miles of tractor road connect the property with the McQueston Lake road, which in turn is connected to Mayo and Whitehorse by public roads. More specifically the property is located $64^{\circ} 05' 30''$ latitude, $135^{\circ} 00' 00''$ longitude, 2300-4600 elevation.

The tractor road is barely negotiable in summer with bombardiers and road use is essentially restricted to winter freighting.

Extensive use was made of a combination of fixed wing to Clark Lakes and bombardier to camp, a distance of about 3 miles. Mayo is the closest supply town and helicopter as well as small float equipped aircraft are generally available. Mayo is 50 miles southwest of the claim group.

Historical Review:

The original discovery of the Bullion Mountain showing was made by Mr. Lorne Elliot, who was in the process of following up anomalous lead and zinc values obtained in a government silt sampling program.

Bullion Mountain subsequently purchased the property from Elliot and conducted extensive programs in 1971 and 1972.

The property was brought to the attention of Scurry-Rainbow Oil Limited in the summer of 1972 and after preliminary examinations by Scurry, an option agreement was negotiated.

Scurry-Rainbow Oil Limited carried out geological, geophysical and drilling programs in 1972, compiled all available data over the winter months and conducted the extensive program during 1973 which is the subject of this report.

Geology and Mineralization:

Geology:

The Clark Claims are underlain by quartzites, chlorite schist, mica schist, graphitic schist and limestone. The general attitude of the various rock units is an easterly strike and southerly dip of 20 to 50°. These formations frequently contain faults and fractures of variable attitudes.

In the silicious sediments these structures are usually represented by gouge with minor alteration and brecciation which in the limestone, brecciation and schistose structures, frequently graphitic are the common end result.

It is within the most prominent structure of this type that the Ag-Pb-Zn mineralization occurs.

Within the claim area, the younger silicious sediments are to be found on all the prominent topographic highs and are much more frequently exposed than the limestone.

The limestone is restricted to the lower lying areas and is frequently drift or Talus covered. Where exposed in outcrop or bulldozer trenches, it is generally dark grey to black, usually schisted, graphitic, leached and frequently brecciated. Numerous dynamic structures are in evidence with the resultant alterations. The limestone-quartzite contact dips at 30 to 60° south and locally exhibits tight folding.

The main structure on the property is a crosscutting fault of irregular strike and dip. The general attitude of this fault zone is N 20° E (grid) with a steep easterly dip varying from 68° to 90°. Some displacement is in evidence at the northern footwall of the limestone where the quartzite on the western side of the fault exhibits an apparent southerly displacement. This could be the result of either strike or dip displacement and probably a combination.

Fracturing, brecciation and alteration are in evidence within the limestones and quartzites near the contact. At this point the mineralized fault zone remains in the limestone and turns easterly to a strike of E 20° S (grid) and dips steeply southerly.

Several steeply dipping fractures and faults of varying strike are in evidence in outcrop and in the adit. One of these within the quartzite and exposed in the adit contains galena, oxidized sulphides and gouge material over a width of up to six inches.

Folding is in evidence within the limestone, the footwall and the hanging wall quartzites. Frequently the folding is associated with schistosity and brecciation.

Sulphide Mineralization:

Pyrite and pyrrhotite mineralization is common both in the limestones and silicious sediments. It consistently occurs as fine disseminations with occasional coarse blebs and is more abundant in the limestones where schistosity and brecciation is more intense. Occasionally it comprises 6 to 8% of the rock unit. In the silicious sediments the pyrite, pyrrhotite content seldom exceeds 2%.

The dark green massive chlorite schists frequently host coarsely disseminated magnetite, often in the 10% range.

Lead, zinc and silver mineralization is restricted to steeply dipping structures in the limestone and to a much lesser degree in the quartzite. The mineralized zone at surface and underground is heavily oxidized; contains disseminated and stringers of galena, and only occasional fresh sphalerite grains. Some pyrite and rare chalcopyrite occurs within the oxidized zone as well. The mineralization occurs as bands along the break, serves as the matrix for the crushed limestone and partially replaces some breccia particles. The mineralization within the adit and where exposed on surface is restricted to a major structural break exhibiting erratic behaviour on strike and along its dip.

The fault zone consists of crushed limestone with varying amounts of oxidized sulphides, galena, occasional fresh sphalerite and rare pyrite and chalcopyrite. Schistosity and lineations parallel the core of the structure which contains the mineralization of interest.

The zone of mineralization pinches and swells with a minimum dimension of inches to twenty feet and frequently contains limestone blocks. The greatest thicknesses noted to date are near the northerly footwall quartzite contact at a point where the structure and mineralization turn sharply to the east.

Further south, when the mineralized zone is prominent, the width averages 5.0' but is erratic.

Three zones of mineralization were intersected in the adit drive. Each zone was back chip sampled across the adit. Following are the weighted grades for the respective zones.

Zone 1 - chip samples at 10' intervals along 40' of the drift.
- located near northern limestone-quartzite contact.

Ag	Pb	Zn
3.35	2.74	2.25 (average sample width is 7.4')

Zone 2 - chip sampled at 5' intervals along 25' of the drift.
- central zone of mineralization in the adit.

Ag	Pb	Zn
1.55 oz/T	1.58%	0.91% (average sample width is 7.5')

Zone 3 - chip sampled at 5' intervals along 65' of the drift and cross-cut. (most southerly zone in the adit).

Ag	Pb	Zn
6.79 oz/T	4.76	3.39 (average sample width is 5.0')

Exploration Program:

Adit Programs:

A total of 1493' of drift and cross-cut was completed. In addition, three raise rounds and several wall slashes were taken for drilling purposes.

Most of the material for the driving program was freighted to the property in April with road and portal preparation lasting until April 27.

At this time driving began in earnest; employing trackless mining methods in an 8' x 8' adit on a three shift basis. At a point 680' from the portal, dimensions were enlarged to 8' x 10' and maintained to completion. Adit driving was completed on August 7, 1973.

The mining crew was gradually reduced and at completion was operating on a one-shift basis.

Drilling:

Underground diamond drilling began August 13 and utilized one J V machine recovering Axt core. Drilling was carried out on a one-shift basis and drilled a total of 1093' in seven boreholes.

Drill holes were spotted to check for strike and dip extensions of the mineralized structure; as well as designed to probe for additional parallel zones.

Drilling confirmed the strike and dip continuation of the main structure but failed to locate any new zones of interest.

<u>Drilling Summary</u>				
<u>D. D. H.</u>	<u>Co-ord</u>	<u>Angle & direction</u>	<u>Final Footage</u>	<u>Comments</u>
W-54	49, 925W/49, 425N	0° West	116'	Structure and rare sulps intersected
W-55	49, 915W/49, 425N	0° East	200'	No structure or mineralization of interest

W-57	49, 417W/49, 600N	-60° East	179'	Down dip extension intersected
W-58	49, 416W/49, 600N	+2° West	200'	No structure or mineralization of interest
W-59	49, 825W/49, 783N	+2° West	102'	Structure & sulps intersected. Poor core recovery
W-61	49, 825W/49, 784N	+2°(330° Grid)	96'	Structure and mineralization intersected
W-64	49, 918W/49, 600N	+2° East	200'	Structure and rare sulps intersected.

Geological Mapping & Sampling:

Surface mapping in the area of the main showing, camp, adit, trenches and roads was conducted on a scale of 1" = 40'; using grid stations and permanent surveyed stations for control.

The remainder of the claim group was mapped on a reconnaissance basis and a compilation map on a scale of 1" = 600' was prepared.

Within the adit, back mapping was carried out on 20 scale with a 40 scale compilation prepared noting rock types, structures, mineralization, their attitudes and sampling detail.

Detail sampling of the underground mineralization was carried out at 5' or 10' intervals along the adit. The procedure followed was one of back chip sampling, the details of which are shown on the accompanying adit plan and weighted grades of each zone itemized in the "Geology and Mineralization" section of this report.

Where mineralization of interest was intersected in the diamond drill holes, these sections were split and submitted for Ag, Pb and Zn assays. The results are reported on the accompanying sections and assay report sheets.

The core from the underground program including the remaining split portion is stored at the adit portal for any future reference.

Road Building and Trenching:

Road building and reconstruction began in early April with the plowing of old cat roads from McQueston Lake to camp. In addition roads were constructed for access to the southern claim boundary in the Scougale Creek area and north for bombardier access to the Clark Lakes area. These roads exposed several outcrops of geological interest. Approximately 2000 feet of road was constructed on a steep northerly facing escarpment, for access to the adit portal. The last 700' of this road required drilling and blasting of bedrock which resulted in good exposures.

Several trenches and roads of previous programs were cleaned out and restudied geologically.

Attempts to re-activate the trenching program were deferred due to unusually wet ground conditions. A D-8 cat with rippers was brought to the property in mid-August. After getting stuck in deep mud several times it was decided to postpone this phase until operating conditions improved.

Surveying:

A plane table survey was conducted using the established base line and permanent survey points. From the survey a map was prepared showing road, trench and other pertinent locations. Topo contours were superimposed with an interval of 25'.

Underground surveys were carried out with an internal reading K & E transit. Permanent stations are located throughout the adit and consist of spads inserted in wooden plugs located in holes drilled into the back for this specific purpose.

Conclusions:

The results of programs conducted on a silver, lead, zinc showing of Bullion Mountain Mining Co. Ltd's (NPL) property located near Clark Lakes in the Mayo District of the Yukon Territory; confirms the existence of a vein-type deposit. The vein occurrence is in a steeply-dipping fault zone of irregular grade, strike, dip and width. No appreciable replacement of the wall rock is in evidence and mineralization is essentially controlled and confined to the fault zone.

The mineralization is extensively oxidized where intersected to date. The mineralized structure, although irregular has not been delineated along strike or dip and is essentially open in these directions.

It has been decided to curtail any further work on the project until the economic implications of such a deposit in such a remote location have been studied in more detail.

The recent geological data will also require assimilation with previous knowledge and likely involve an alteration of the original limestone replacement theory.

Drill Hole Log

COMPANY Scurry-Rainbow Oil Limited

PROPERTY Bullion Mountain, Yukon

Section No.

HOLE No. W-54

Started August 13, 1973	Bearing Grid West	Lat. 49, 925 W	Collar El.	Logged by T. R. Gallant Date August 20/73
Completed August 14, 1973	Angle from Horiz. 0°	Dep. 49, 425 N	Bottom El.	Remarks
Driller H. W. Hagen Co. Ltd.	Length 116'	Location	Level 3300 Adit	

Footage		Interval	RECOVERY		Graphic Log	DESCRIPTION	Sample No.	From - To	Interval	ASSAY		
From	To		Ft.	%								
	0.0					Collar						
0.0	24.0					Limestone: Grey to black, fg, massive abundant carb veining and minor schisting, locally graphitic.						
24.0	27.0					Graphitic micaceous Schist: foliated @ 0°						
27.0	37.0					Limestone: as at 24.0						
37.0	39.3			100		Graphitic Schist:						

Drill Hole Log

COMPANY Scurry-Rainbow Oil Limited

PROPERTY Bullion Mountain, Yukon

Section No.

HOLE No. W-54

Started August 13, 1973	Bearing Grid West	Lat. 49, 925 W	Collar EL.	Logged by T. R. Gallant	Date Aug. 20/73
Completed August 14, 1973	Angle from Horiz. 0°	Dep. 49, 425 N	Bottom EL.	Remarks	
Driller H. W. Hagen Co. Ltd	Length 116'	Location	Level 3300 Adit		

Footage		Interval	RECOVERY		Graphic Log	DESCRIPTION	Sample No.	From - To	Interval	ASSAY		
From	To		Ft.	%								
39.3	71.0			80		Limestone: Schisted, brecciated, graphitic, fragmental, minor oxidized sulps as breccia matrix.						
71.0	116.0					Limestone: as at 24.0						
						Foot of Hole						

Drill Hole Log

COMPANY Scurry-Rainbow Oil Limited

PROPERTY Bullion Mountain, Yukon

Section No.

HOLE No. W-55

Started August 15, 1973	Bearing Grid East	Lat. 49, 915 W	Collar EL.	Logged by T. Gallant	Date Aug. 16/73
Completed August 16, 1973	Angle from Horiz. 0°	Dep. 49, 425 N	Bottom EL.	Remarks	
Driller H. W. Hagen Co.	Length 200	Location	Level 3300 Adit		

Footage		Interval	RECOVERY		Graphic Log	DESCRIPTION	Sample No.	From-To	Interval	ASSAY		
From	To		Ft.	%								
0.0	0.0					Collar						
0.0	49.0					Limestone: heavily schisted and carbonated foliation is irregular, occ diss. PoPy. Some qtz veining from 40 to 49.						
49.0	121.0					Limestone: black, massive, locally schisted, brecciated and graphitic; occ. diss. PoPy (3%).						
121.0	129.0					Limestone: grey bleached, massive, some Po blebs.						
129.0	200.0					Limestone: as at 121.0; occ short schisted graphitic sections.						
						Foot of Hole						

Drill Hole Log

COMPANY Scurry-Rainbow Oil Limited

PROPERTY Bullion Mountain, Yukon

Section No.

HOLE No. W-57

Started	Bearing Grid East	Lat. 49, 417 W	Collar El.	Logged by T. Gallant	Date August 26/73
Completed	Angle from Horiz. -60°	Dep. 49, 600 N	Bottom El.	Remarks	
Driller H. W. Hagen Co.	Length 179	Location Adit	Level 3300		

Footage		Interval	RECOVERY		Graphic Log	DESCRIPTION	Sample No.	From - To	Interval	ASSAY		
From	To		Ft.	%						Ag	Pb	Zn
	0.0					Collar						
0.0	102.0					Limestone: black, massive, carbonated, short schisted graphitic zones 3-5% diss PoPy.						
102.0	138.0					Limestone: Schisted, brecciated, graphitic, some silicious fracture fillings, variable foliation and occ diss PoPy.						
138.0	143.0	5.0		70		Sulphides: oxidized and leached; minor PbS-ZnS.	11655		5.0			
143.0	150.7	7.7		100		Limestone with occ oxidized sulp str. containing PbS-ZnS	11656		7.7			

Drill Hole Log

COMPANY Scurry-Rainbow Oil Limited

PROPERTY Bullion Mountain, Yukon

Section No.

HOLE No. W-57

Started	Bearing Grid East	Lat. 49, 417 W	Collar El.	Logged by T. Gallant	Date August 26/73
Completed	Angle from Horiz. -60°	Dep. 49, 600 N	Bottom El.	Remarks	
Driller H. W. Hagen	Length 179	Location Adit	Level 3300		

Footage		Interval	RECOVERY		Graphic Log	DESCRIPTION	Sample No.	From-To	Interval	ASSAY		
From	To		Ft.	%						Ag	Pb	Zn
150.7	154.7	4.0		100		Sulphide zone: oxidized and leached with heavy PbS-ZnS	11657		4.0			
154.7	179.0					Limestone: grey to black, massive, locally schisted, graphitic and micaceous. Foliation is variable.						
						Foot of Hole						

Drill Hole Log

COMPANY Scurry-Rainbow Oil Limited

PROPERTY Bullion Mountain, Yukon

Section No.

HOLE No. W-58

Started August 17	Bearing Grid West	Lat. 49, 416 W	Collar El.	Logged by T. R. Gallant Date August 20/73
Completed August 18	Angle from Horiz. +2°	Dep. 49, 600 N	Bottom El.	Remarks
Driller H. W. Hagen Co Ltd	Length 200'	Location	Level 3300 Adit	

Footage		Interval	RECOVERY		Graphic Log	DESCRIPTION	Sample No.	From - To	Interval	ASSAY		
From	To		Ft.	%								
	0.0					Collar						
0.0	20.0					Limestone: black, massive, weakly schisted, some carbonate veining; foliation is weak and variable at 0-70°						
20.0	62.0					Limestone: schisted, variable foliation graphitic, 7% diss Po, Py.						
62.0	155.0					Limestone: massive, abundant carb. veining, rare PoPy.						
155.0	200.0					Limestone: schisted, graphitic, variable foliation with some sections containing up to 10% PoPy.						
						Foot of Hole						

Drill Hole Log

COMPANY Scurry-Rainbow Oil Limited

PROPERTY Bullion Mountain, Yukon

Section No.

HOLE No. W-59

Started August 23/73	Bearing Grid West	Lat. 49, 825 W	Collar EL.	Logged by T. R. Gallant Date Aug. 25-26/73
Completed August 23/73	Angle from Horiz. +2°	Dep. 49, 783 N	Bottom EL.	Remarks
Driller H. W. Hagen Co. Ltd.	Length 102'	Location	Level 3300 Level Adit	

Footage		Interval	RECOVERY		Graphic Log	DESCRIPTION	Sample No.	From - To	Interval	ASSAY		
From	To		Ft.	%						Ag	Pb	Zn
0.0	0.0					Collar						
	25.0					Limestone: grey to black, fragmental, leached, few oxidized sulph blebs.						
25.0	28.0	3.0		100		Sulphide zone: oxidized, leached, visible PbS-ZnS.	11651	25.0-28.0	3.0'			
28.0	34.3	6.3		20		Limestone: leached brecciated graphitic	11652	28.0-34.3	6.3'			
34.3	58.0	23.7		35		Sulphide Zone: leached, rare PbS, few limestone inclusions	11653	34.3-58.0	23.7			
58.0	102.0					Limestone: heavily schisted and graphitic near the sulphide contact, frequent carb. veining, occ diss PoPy. Foot of Hole						

Drill Hole Log

COMPANY Scurry-Rainbow Oil Limited

PROPERTY Bullion Mountain, Yukon

Section No.

HOLE No. W-61

Started August 24, 1973	Bearing 330° (Grid)	Lat. 49, 825 W	Collar EL.	Logged by T. R. Gallant Date August 26, '73
Completed August 25, 1973	Angle from Horiz. +2°	Dep. 49, 784 N	Bottom EL.	Remarks
Driller	Length 96'	Location	Level 3300 Level Adit	

Footage		Interval	RECOVERY		Graphic Log	DESCRIPTION	Sample No.	From-To	Interval	ASSAY		
From	To		Ft.	%						Ag	Pb	Zn
0.0	0.0					Collar						
	21.0					Limestone: leached, schisted, graphitic, occ oxidized sulph bleb and variable foliation						
21.0	30.0	9.0		100		Sulphide Zone: oxidized, leached, some limestone blocks. visible PbS-ZnS	11654	21-30	9'			
30.0	50.5					Limestone: Black, massive, locally sheared and graphitic.						
50.5	55.0					Limestone: heavily schisted and leached foliation is irregular.						
55.0	76.0					Limestone less altered with 4% PoPy.						

Drill Hole Log

COMPANY Scurry-Rainbow Oil Limited

PROPERTY Bullion Mountain, Yukon

Section No.

HOLE No. W-61

Started August 24, 1973	Bearing 330°(Grid)	Lat. 49, 825 W	Collar EL.	Logged by T. R. Gallant Date Aug. 26/73
Completed August 25, 1973	Angle from Horiz. +2°	Dep. 49, 784 N	Bottom EL.	Remarks
Driller	Length 96'	Location	Level 3300 Level Adit	

Footage		Interval	RECOVERY		Graphic Log	DESCRIPTION	Sample No.	From - To	Interval	ASSAY		
From	To		Ft.	%								
76.0	93.0					Limestone: with intermixed Qte.						
93.0	96.0					Qte: grey, gritty, massive, folliation at 50°.						
						Foot of Hole						

Drill Hole Log

COMPANY Scurry-Rainbow Oil Limited

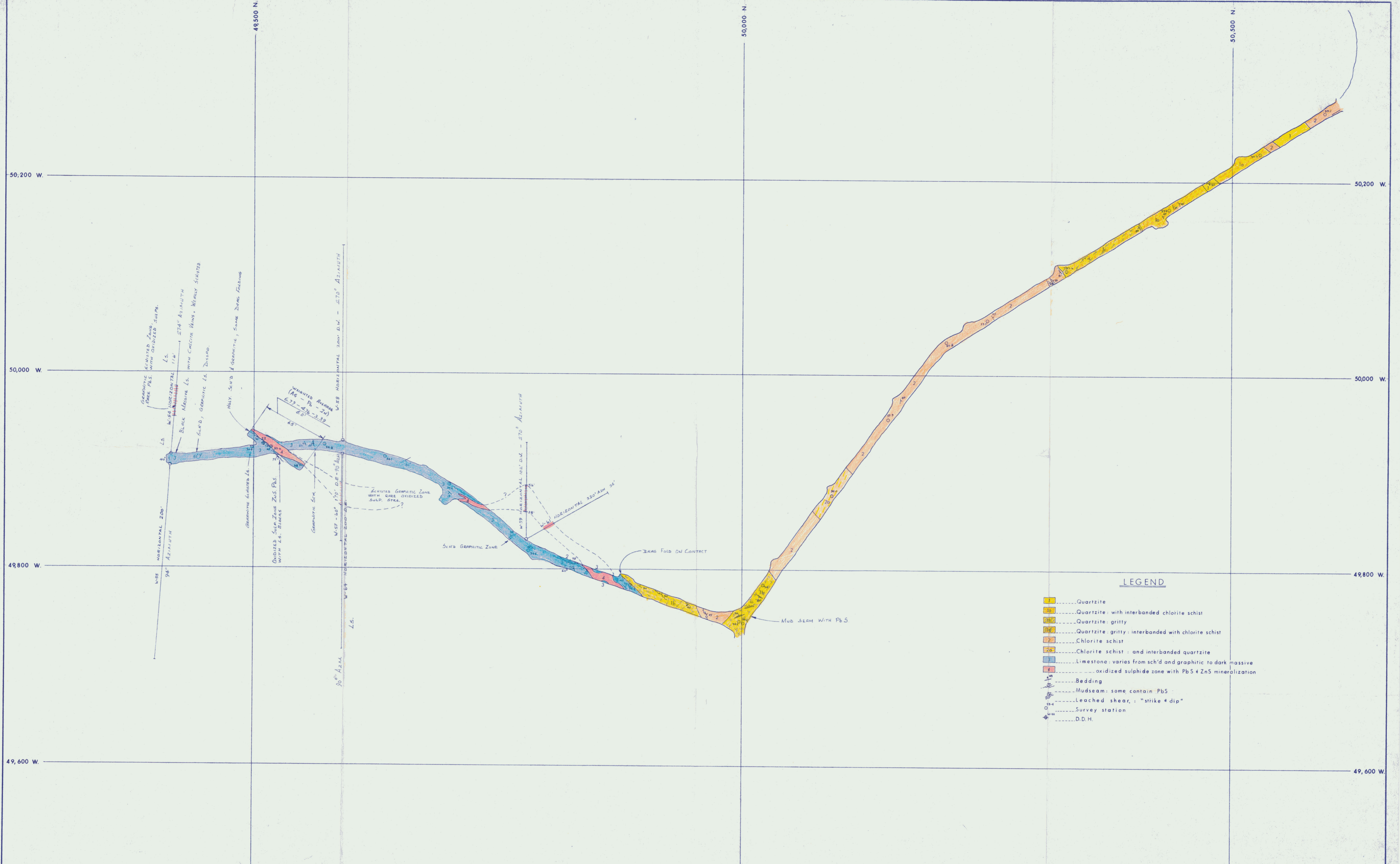
PROPERTY Bullion Mountain, Yukon

Section No.

HOLE No. W-64

Started August 19, 1973	Bearing Grid East	Lat. 49, 918 W	Collar EL.	Logged by T. R. Gallant Date Aug. 20/73
Completed August 20, 1973	Angle from Horiz. +20°	Dep. 49, 600 N	Bottom EL.	Remarks
Driller H. W. Hagen	Length 200'	Location	Level 3300 Adit	

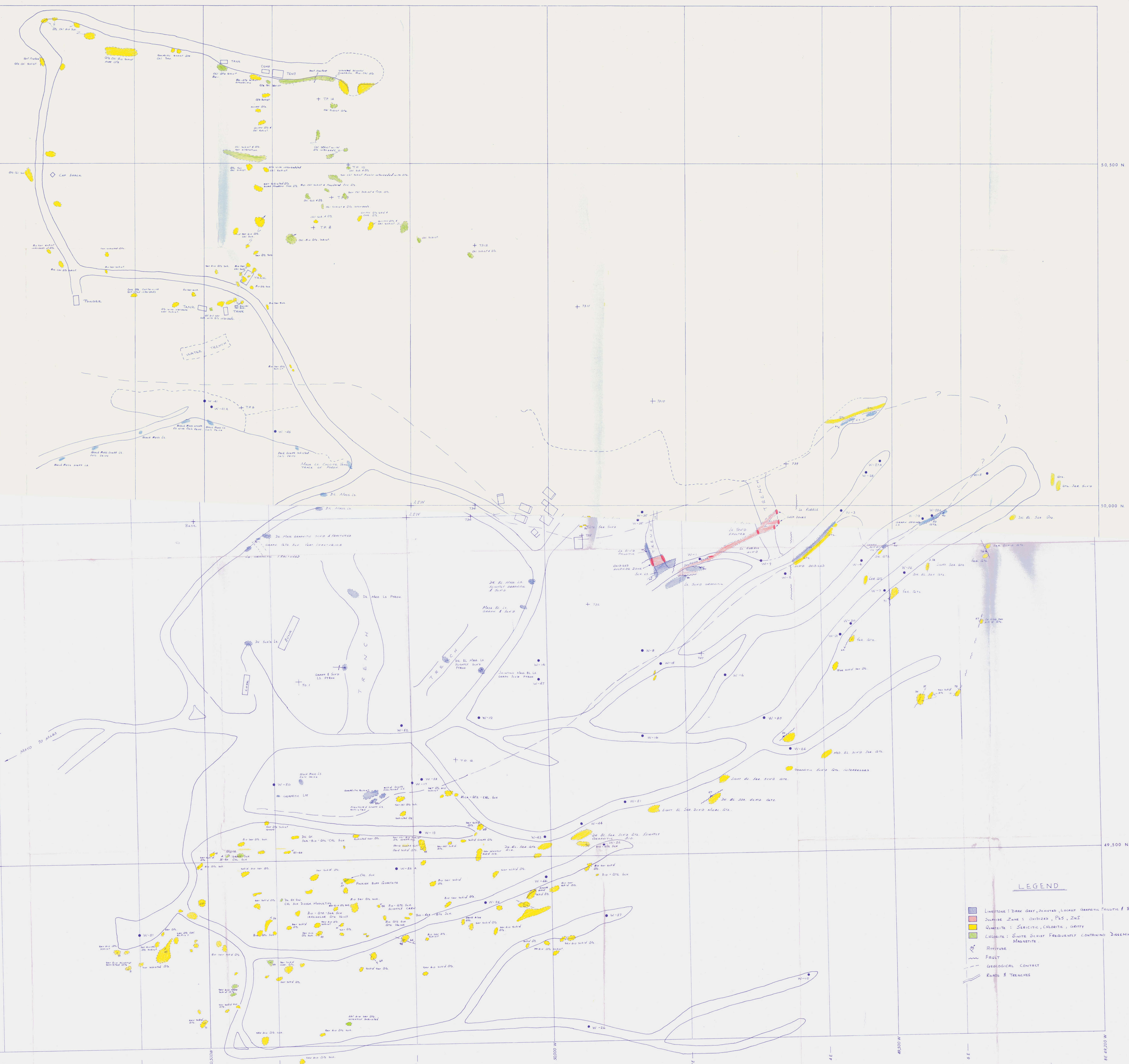
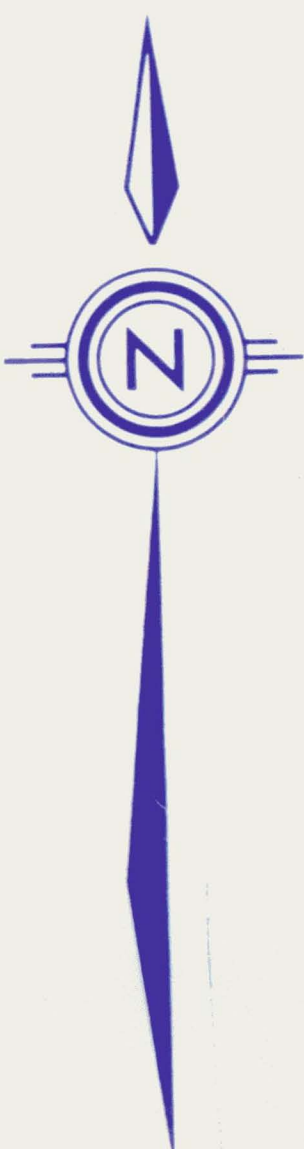
Footage		Interval	RECOVERY		Graphic Log	DESCRIPTION	Sample No.	From-To	Interval	ASSAY		
From	To		Ft.	%								
0.0						Collar						
0.0	27.0					Limestone: graphitic, schisted, weakly brecciated, some carb. veining, quite massive.						
27.0	54.0			96		Limestone: brecciated with carb. matrix, rare PbS, ZnS, Py, and oxidized sulps as narrow stringers						
54.0	200.0					Limestone: black, massive, locally brecciated and graphitic, abundant carbueining, occ PoPy.						
						Foot of Hole						



LEGEND

- 1 Quartzite
- 2 Quartzite with interbanded chlorite schist
- 3 Quartzite: gritty
- 4 Quartzite: gritty: interbanded with chlorite schist
- 5 Chlorite schist
- 6 Chlorite schist: and interbanded quartzite
- 7 Limestone: varies from sch'd and graphitic to dark massive
- 8 oxidized sulphide zone with PbS & ZnS mineralization
- 9 Bedding
- 10 Mudseam: some contain PbS
- 11 Leached shear: "strike & dip"
- 12 Survey station
- 13 D.D.H.

DRAWN	R. L.	SCALE	1" = 40'	SCURRY-RAINBOW OIL LIMITED	BULLION MOUNTAIN PROPERTY YUKON TERRITORY	GEOLOGY ADIT PLAN
TRACED		DATE	AUG. / 73			
APPROVED		REVISED:	SEPT. / 73			
				FILE NO. 8-001-B-4		



LEGEND

- Limestone: Dark grey, bedded, locally cherty, fossiliferous & brecciated
- Dolomite: Zone 1: Oxidized, PLS, ZnS
- Quartzite: Sericitic, chloritic, dirty
- Calcilite: Siliceous, frequently containing disseminated magnetite
- Fracture
- Fault
- Geological Contact
- Roads & Trenches

DRAWN TRG	SCALE 1"=40'	SCURRY-RAINBOW OIL LIMITED	SURFACE GEOLOGY
TRACED D.L.	DATE Nov 8/73	BULLION MTS PROJECT	FILE NO. B-001 - 7-7
APPROVED		YUKON TERRITORY	

48,000 W

49,000 W

48,500 W

48,000 W

49,000 W

48,500 W

49,000 W

48,500 W

49,000 W

48,500 W

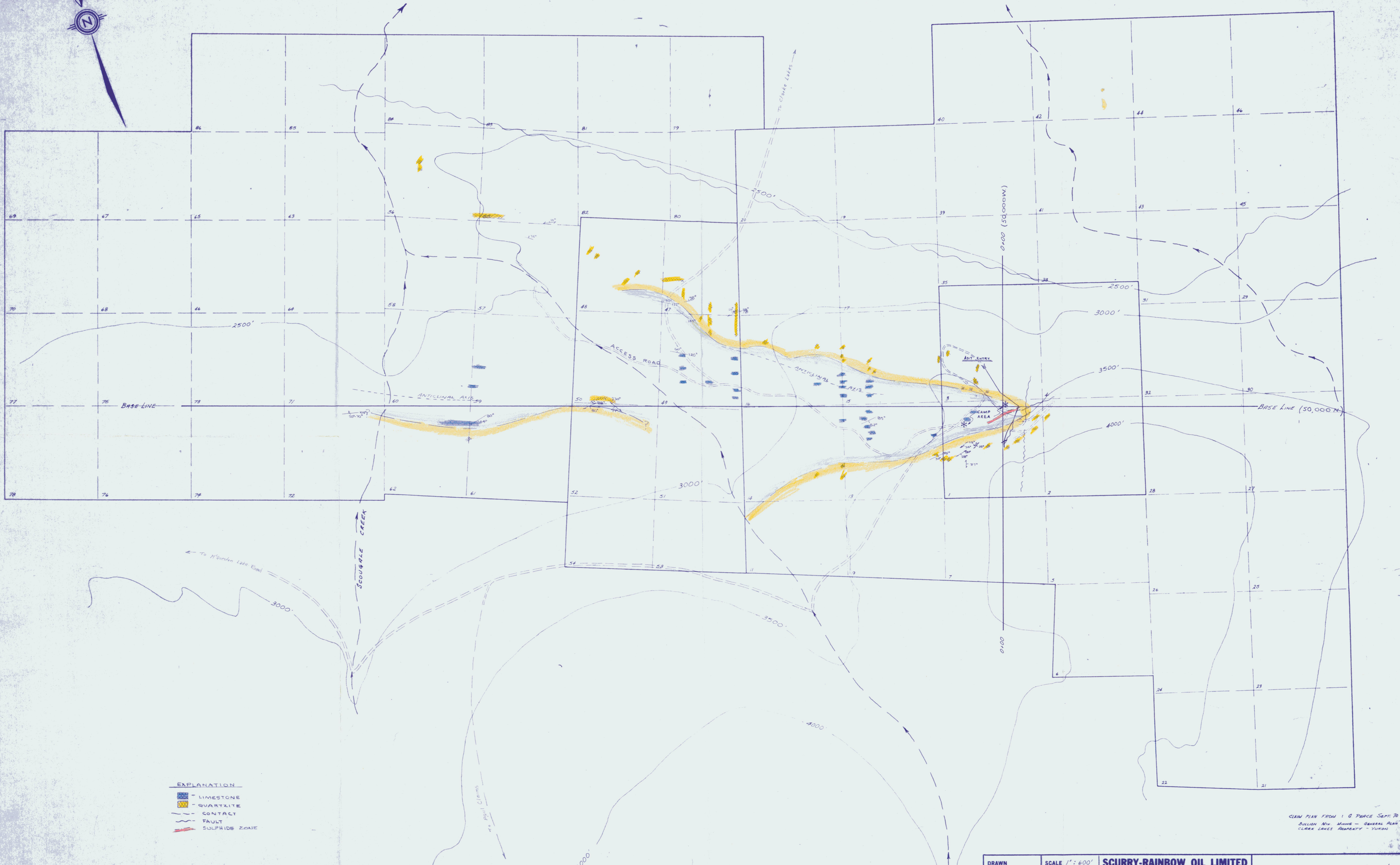
49,000 W

48,500 N

50,500 N

50,000 N

49,500 N



- EXPLANATION**
- LIMESTONE
 - QUARTZITE
 - CONTACT
 - FAULT
 - SULPHIDE ZONE

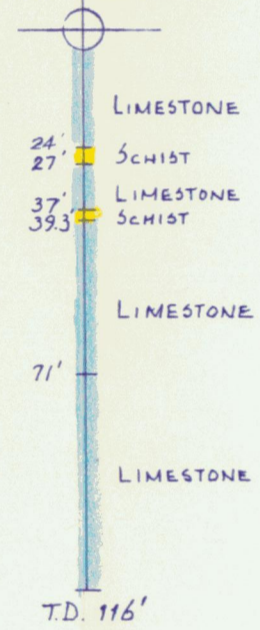
CLAIM PLAN FROM: G. PEARCE SEPT. 70
 BULLION Mtn. MINING - GENERAL PLAN
 CLARK LAKES PROPERTY - YUKON

DRAWN	SCALE 1" = 600'	SCURRY-RAINBOW OIL LIMITED	GEOLOGICAL MAP WITH ADIT LOC.	
TRACED JTD	DATE Feb. 14/73			BULLION Mtn. MINING
APPROVED	REVISED SEPT. 173			CLARK LAKES AREA - YUKON
		FILE NO. 8-001 - 13 - 4		

W-54 (0°)

LAT. 49,925 W.
DEP. 49,425 N.

EL. 3300' ADIT
274° AZIMUTH



LIMESTONE

24'
27'

SCHIST

LIMESTONE

37'
39.3'

SCHIST

LIMESTONE

71'

LIMESTONE

LIMESTONE

LIMESTONE

LIMESTONE

LIMESTONE

LIMESTONE

T.D. 116'

DRAWN R.L.

SCALE 1" = 40'

SCURRY-RAINBOW OIL LIMITED

TRACED

DATE SEPT. /73

BULLION MOUNTAIN PROPERTY
YUKON TERRITORY

D.D.H. W-54 SECTION

APPROVED

FILE NO. 8-001 . 96 . 3

W - 55 (0°)

LAT. 49,915 W.
DEP. 49,425 N.

EL. 3300' ADIT
94° AZIMUTH



LIMESTONE

49'

LIMESTONE

121'

129'

LIMESTONE

LIMESTONE

TD. 200'

DRAWN R.L.

SCALE 1" = 40'

SCURRY-RAINBOW OIL LIMITED

TRACED

DATE SEPT. 1973

BULLION MOUNTAIN PROPERTY
— YUKON TERRITORY

APPROVED

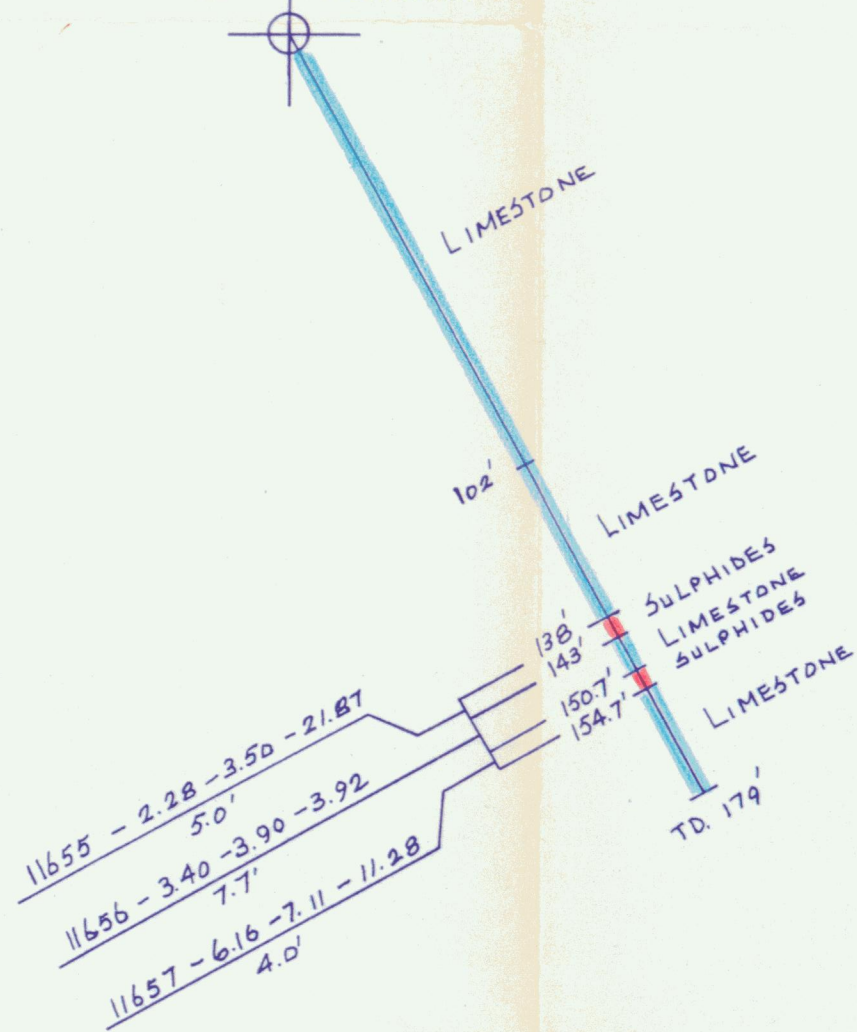
D.D.H. W-55 SECTION

FILE NO. 8-001 . 97 . 3

W - 57 (-60°)

LAT. 49,417 W.
DEP. 49,600 N.

ELEV. 3300' ADIT.
90° AZIMUTH



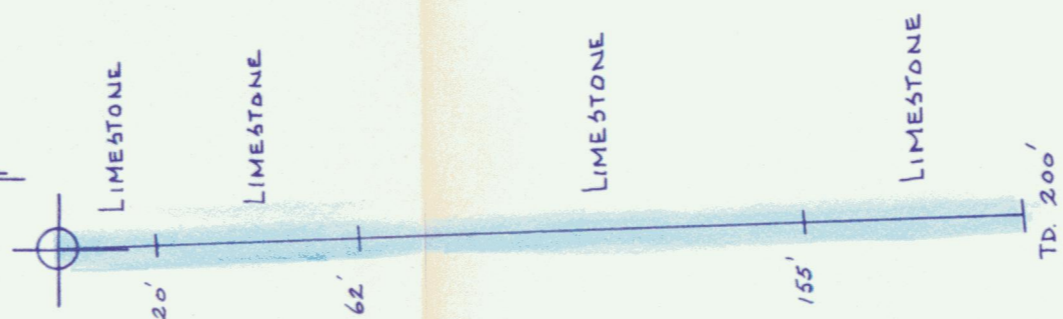
EXPLANATION

SAMPLE No - Ag. - Pb. - Zn.
INTERVAL

DRAWN R.L.	SCALE 1" = 40'	SCURRY-RAINBOW OIL LIMITED	D.D.H. <u>W-57</u> SECTION
TRACED	DATE SEPT./73		BULLION MOUNTAIN PROPERTY
APPROVED			YUKON TERRITORY
			FILE NO. 8-001 . 98 . 3

W-58 (+2°)

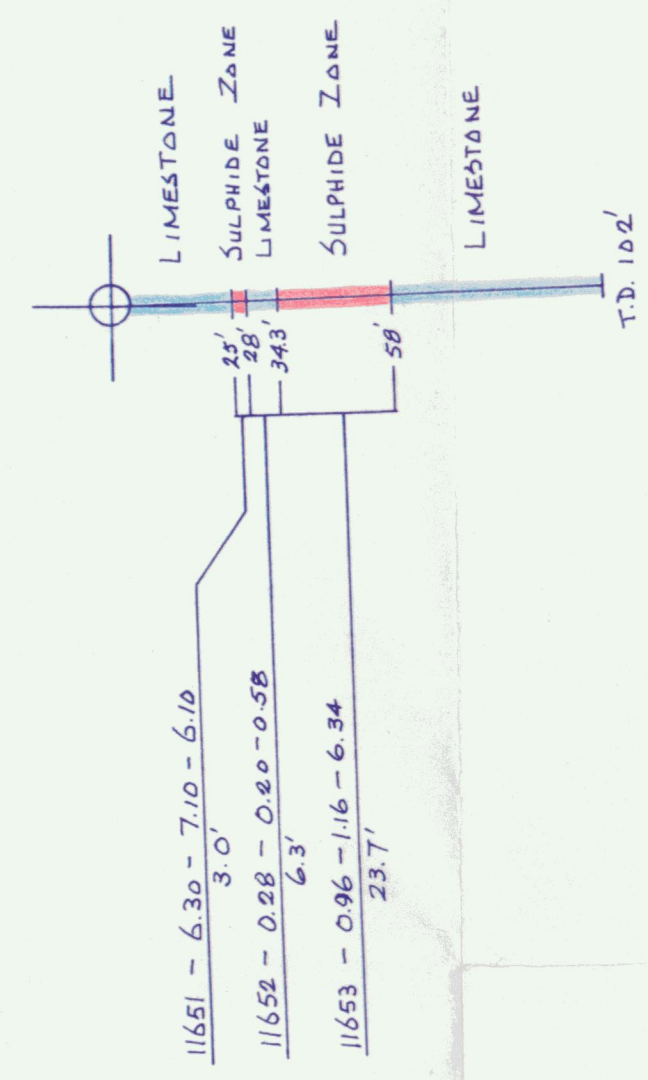
LAT. 49,416 W.
DEP. 49,600 N.
ELEV. 3300' ADIT
270° AZIMUTH



DRAWN R.L	SCALE 1" = 40'	SCURRY-RAINBOW OIL LIMITED	D.D.H. <u>W-58</u> SECTION
TRACED	DATE SEPT. 173		
APPROVED		YUKON TERRITORY	FILE NO. 8-001 . 99 . 3

W-59 (+2°)

LAT. 49,825 W.
 DEP. 49,783 N
 ELEV. 3300' ADIT.
 270° AZIMUTH



EXPLANATION

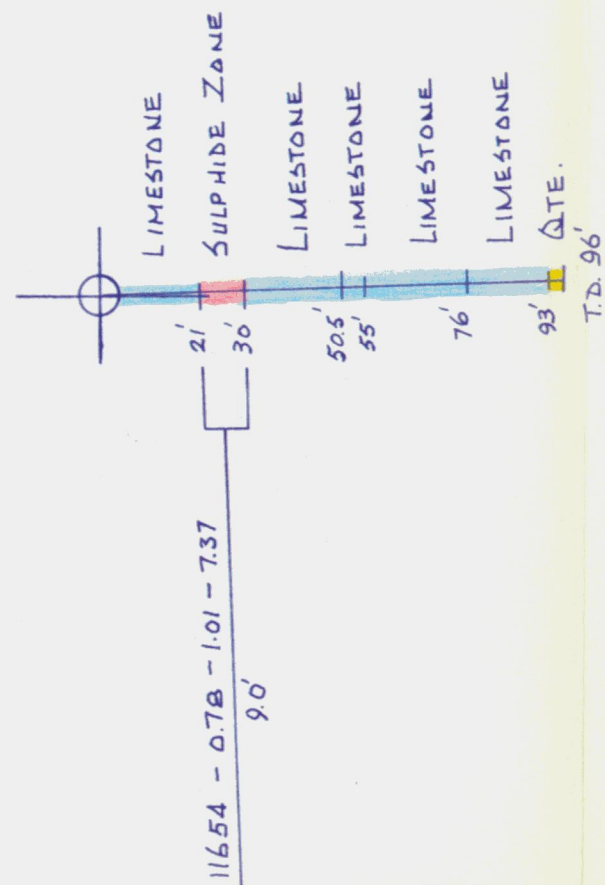
SAMPLE No - Ag. - Pb. - Zn. []
 INTERVAL []

DRAWN RL.	SCALE 1" = 40'	SCURRY-RAINBOW OIL LIMITED	D.D.H. <u>W-59</u> SECTION
TRACED	DATE SEPT. 1973		BULLION MOUNTAIN PROPERTY YUKON TERRITORY
APPROVED			FILE NO. 8-001 · 100 · 3

W-61 (+2°)

LAT. 49,825' W.
DEP. 49,784 N.

ELEV. 3300' ADIT.
330° AZIMUTH



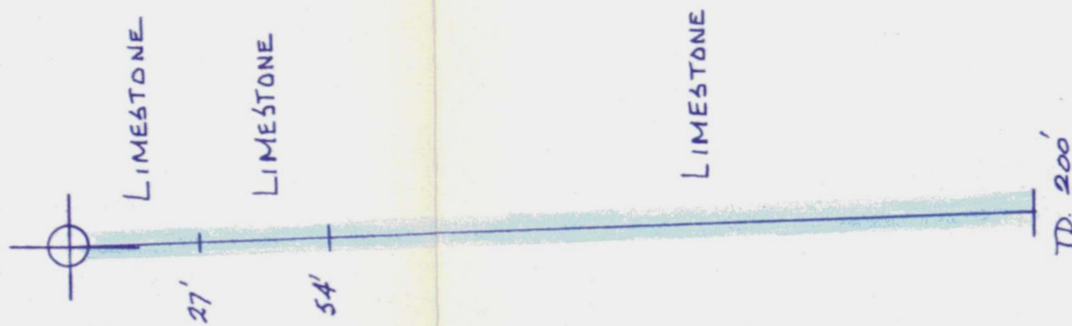
EXPLANATION

SAMPLE No. - Ag. - Pb. - Zn. []
INTERVAL

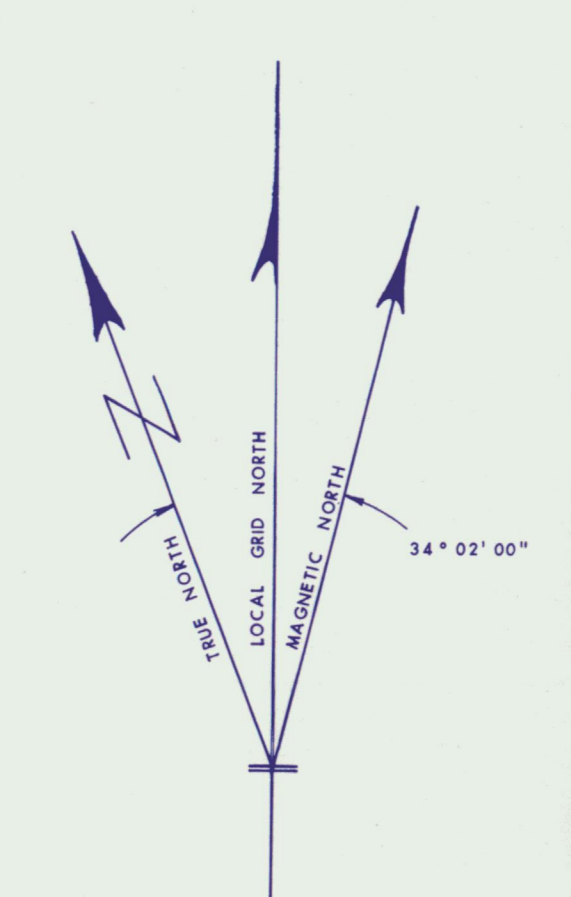
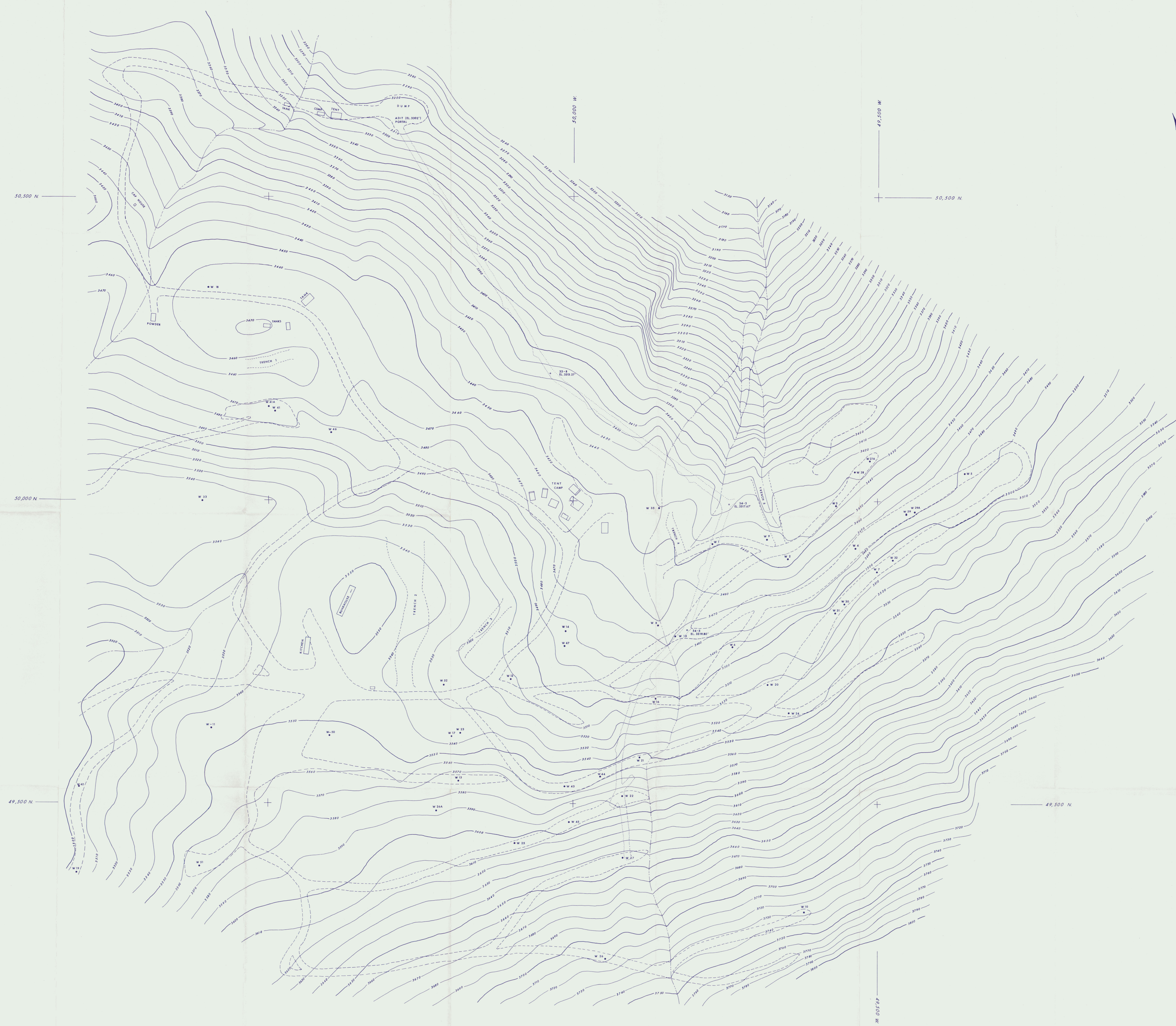
DRAWN R.L.	SCALE 1" = 40'	SCURRY-RAINBOW OIL LIMITED	D.D.H. <u>W-61</u> SECTION
TRACED	DATE SEPT. 173	BULLION MOUNTAIN PROPERTY	FILE NO. 8-001 . 101 . 3
APPROVED		YUKON TERRITORY	

W-64 (+2°)

LAT. 49,918 W.
DEP. 49,600 N.
ELEV. 3300' ADIT
90° AZIMUTH



DRAWN R.L.	SCALE 1" = 40'	SCURRY-RAINBOW OIL LIMITED	D.D.H. <u>W-64</u> SECTION
TRACED	DATE SEPT. /73		BULLION MOUNTAIN PROPERTY YUKON TERRITORY
APPROVED			



BULLION MOUNTAIN, YUKON
SCURRY-RAINBOW OIL LIMITED

REFERENCE

- STREAMS
- CONTOURS
- DIAM DRILL HOLES
- ROADS
- ADIT
- TRENCH

SURVEYED BY : D.G. REITH, R. BALABAS
 DATE : MAY - JUNE 1973
 INSTRUMENT : K & E SELF INDEXING ALIDADE
 DRAWN BY : E.L.
 FILE NO. : 8-001 - 3 - 7
 SCALE : 1" = 50'

TYPE W-8-C-50