

Oct
31, 1975

COMINCO LTD.

EXPLORATION

WESTERN DISTRICT

2 October 1975

DIAMOND DRILL ASSESSMENT REPORT

ON THE

PING GROUP OF MINERAL CLAIMS

BONNET PLUME RIVER AREA

YUKON TERRITORY

N.T.S. 106C/11

64° 38' Latitude
133° 16' Longitude

Period of Work: July 15, 1975 to August 4, 1975

Vancouver, British Columbia

M.S. Travis

091300

COMINCO LTD.

EXPLORATION

WESTERN DISTRICT

October 2, 1975

DIAMOND DRILLING 1975

This report is submitted in order to fulfill the requirements for assessment work on the below-mentioned claims due on January 18, 1976 and April 1, 1976.

Using a Boyles Brothers BBS-1drill taking AQ core, a series of 7 diamond drill holes totalling 1750 feet were drilled on the PING claims during the period from July 15, 1975 to August 4, 1975 including mobilization time. All core including the remainder of those sections split for assay is stored on the property located at 64° 38' 15"N, 133° 16' 22"W on the south side of Black Canyon Creek.

The accompanying diamond drill logs include detailed geologic descriptions of the rocks intersected as well as all assay results. All rocks intersected in the drilling are dolomites or fine clastic sediments and belong to the Upper Proterozoic (Hadrynian) Keele Formation.

A surface plan at a scale of 1 inch = 1/2 mile locates the 7 holes drilled in 1975 with respect to the claim boundaries on claims PING 8, 9 and 10. The distribution of footage drilled is as follows:

<u>HOLE NO.</u>	<u>ATTITUDE</u> <u>(Azimuth/Dip)</u>	<u>FEET ON</u> <u>PING 8</u>	<u>FEET ON</u> <u>PING 9</u>	<u>FEET ON</u> <u>PING 10</u>	<u>TOTAL</u>
PING 75-1	257°/-59°	--	11	340	351
PING 75-2	350°/-56°	--	--	250	250
PING 75-3	350°/-45°	--	59	--	59
PING 75-3A	350°/-55°	--	250	--	250
PING 75-4	315°/-55°	301	--	--	301
PING 75-5	280°/-55°	266	--	--	266
PING 75-6	280°/-75°	273	--	--	273
TOTAL:		840	320	590	1,750

Attached to this report are location maps at scales of 1 inch = 80 miles and 1 inch = 8 miles and a claim map on the PING group showing drill sites and core storage location. Also included is a Statement of Expenditures incurred during the period from July 15, 1975 to August 4, 1975 supported by an Affidavit.

Report by:

Steve Travis
M.S. Travis
Geologist

Endorsed by:

D.W. Heddle
D.W. Heddle
Chief Geologist

Approved for
Release by:

W.T. Irvine
W.T. Irvine, Manager
Exploration, Western District

MST/dr
Attach.

EXHIBIT "A"

GEOLOGICAL REPORT ON THE
PING GROUP OF MINERAL CLAIMS

situate at

64°38' North Latitude
133°16' West Longitude

N.T.S. 106C/11

SALARIES:

J.W. McLeod	250.00
George Bleiler	500.00
Peter Krcmar	464.58
Donald Peel	1,500.00
John Poikans	1,500.00
Company portion of U.I.C., C.P.P.	
Holiday pay, W.C.B.	398.16

TRANSPORTATION:

Helicopter	4,083.50
Fixed Wing	4,686.67
Fuel	370.92

DRILLING: 33,023.89

CAMP COSTS:

Expediting, food, equipment	5,279.27
-----------------------------	----------

TOTAL: \$ 52,056.99

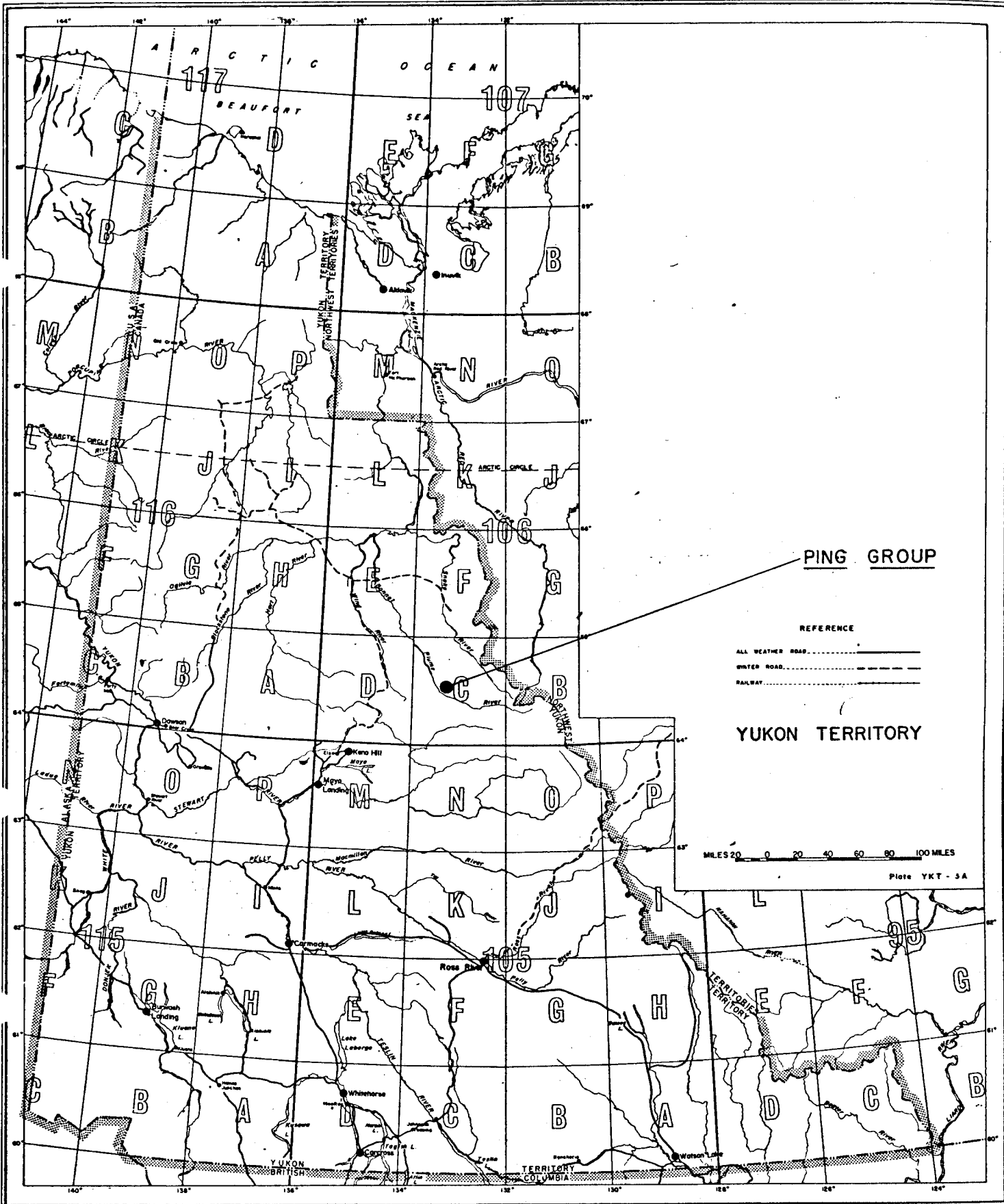


M. S. Travis

THIS IS EXHIBIT "A" TO THE STATUTORY DECLARATION OF EXPENDITURES
RELATING TO THE DIAMOND DRILL SURVEY DECLARED BEFORE ME ON THE
21st DAY OF October, 1975.



A NOTARY PUBLIC IN AND FOR THE
PROVINCE OF BRITISH COLUMBIA.



PING GROUP

REFERENCE

ALL WEATHER ROAD
 WINTER ROAD
 RAILWAY

YUKON TERRITORY

MILES 20 0 20 40 60 80 100 MILES

Plate YKT - 3A



Drawn by: MST		Traced by:	
Revised by:	Date:	Revised by:	Date:

LOCATION MAP PING GROUP

Scale: 1" = 80 miles

Date:

Plate: 1

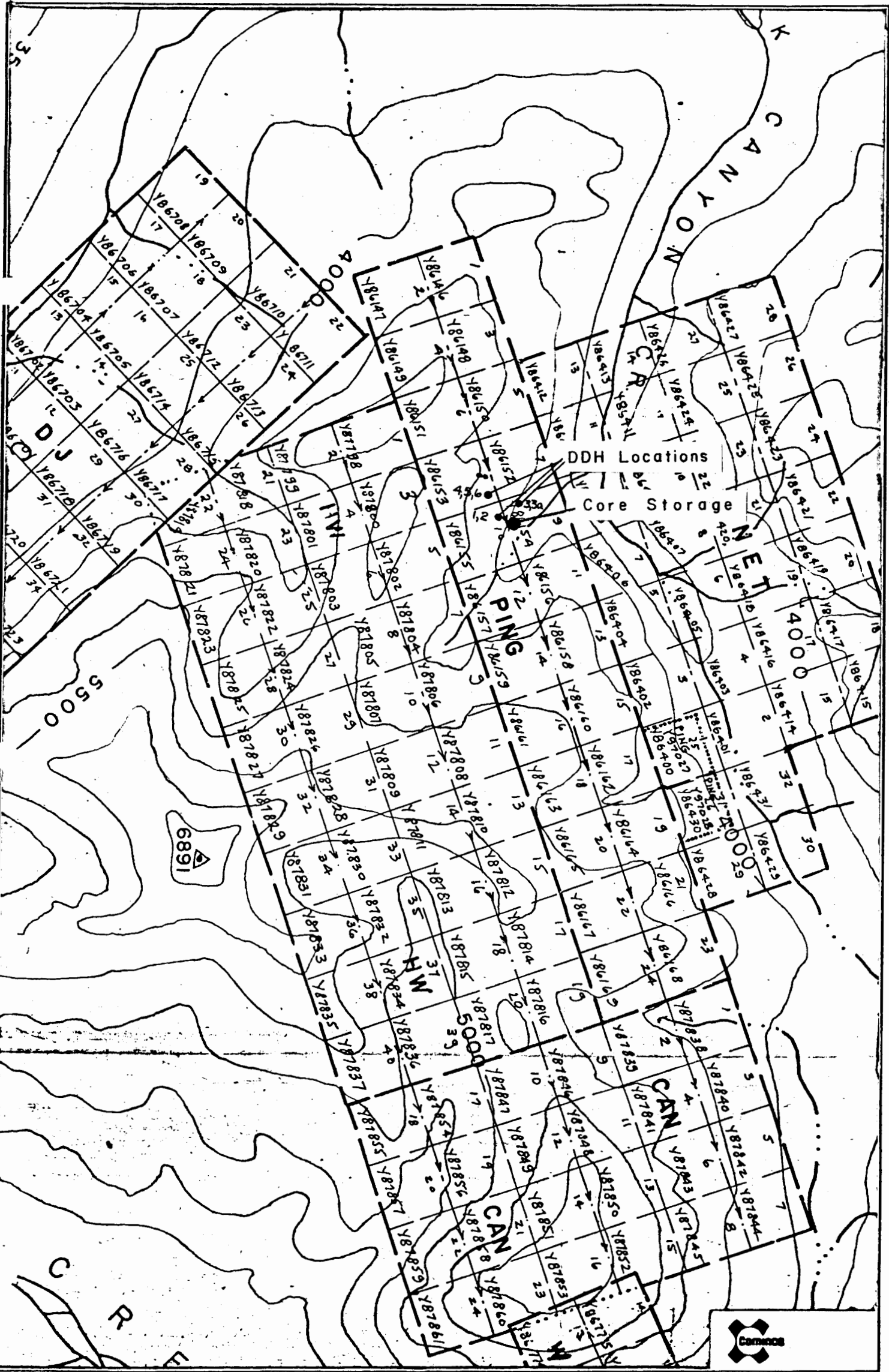


Cominco
NTS 106C/11

Drawn by: MST		Traced by:	
Revised by	Date	Revised by	Date

LOCATION MAP PING GROUP

Scale: 1" = 8 miles Date: Plate: 2



Drawn by:		Traced by:	
Revised by	Date	Revised by	Date

CLAIM MAP
PING GROUP

Scale: 1" = 1/2 mile Date: Plate:

Drill Hole Record



Property	PING	District	MAYO	Hole No.	1
Commenced	July 19/75	Location	South edge of Claim 9	Tests at	Hor. Comp.
Completed	July 21/75	Core Size	AQ	Corr. Dip	-59°
Co-ordinates	BL; 6 + 00E	True Brg.	257°	Logged by	M.S. TRAVIS
Objective	DRILLING I.P. Anomaly	% Recov.	80%	Date	August 1/75

Claim PING 9

T Brg. 257°

Collar Dip -59°

Elev. 4130 ft.

Length

351 ft.

Hole No.

Sheet

106C/11

Footage From To	Description	Sample No.	Length	Analysis	
				%Pb	%Zn
7 - 47	Coarsely crystalline medium grey well recrystallized dolomite with light yellow-grey to yellow white dolospar forming poor interbanded laminations and irregular patches within the rock. Minor veinlets 3 mm to 8 mm in width of coarse white dolospar. Small zones of dolomite-cemented fault gouge at 18 to 21 and 27 to 28. Minor graphite in fault zones. Section from 28 to 30 has little yellow-white dolospar replacement. Minor vugs lined with coarse crystals of dolospar. Frequent iron oxide on fractures and joints. Minor pyrite disseminations in dolomite and along carbonaceous stringers near faults.				
47 - 71.5	Dark grey medium grained sucrosic dolarenite with occasional weak line laminations.		51-53.5	.04	1.06
	Patches of sandy carbon cemented dolomite. Frequent stylolitic stringers of carbon and pyrite. Disseminations of pyrite in rock. Rare veins of vuggy coarse dolospar between 15 mm and 20 mm. Disseminations and veinlets of sphalerite and galena from 58 to 60 with minor disseminations of sphalerite and galena in white dolospar fillings from 52 to 62. Indistinct stromatactoid textures from 68 to 71.5 with black sandy dolomite filling open spaces. Thin argillaceous stringers more prevalent near 71.5.		53.5-57.5 57.5-62.5 62.5-66	.13 1.20 .01	.07 4.02 .01
71.5 - 88	Fine grained silty dark grey to black dolomite with minor white dolospar veinlets and argillaceous stringers. Disseminated pyrite in argillaceous sections. Dark orange to brownish red iron oxides on fractures and joints. Minor patches of sphalerite in white dolospar and disseminations of galena from 76 to 88. Argillaceous bed from 80 to 81.5. 10% recovery 82 to 85		76-80 85-88.5	.09 .49	.31 .01
88 - 123	Black carbonaceous slaty argillite with disseminated pyrite sphalerite and galena blebs				



Drill Hole Record

Colour Plot
& Dips

Property	PING	District		Hole No.	1	Claim		T Brg.		Collar Dip		Elev.		Length		Hole No.	2
Commenced		Location		Tests at		Hor. Comp.											
Completed		Core Size		Corr. Dip		Vert. Comp.											
Co-ordinates				True Brg.		Logged by											
Objective				% Recov.		Date											
Footage	Description	Sample No.	Length	Analysis													
From	To					%Pb	%Zn										
	in small dolomitic shale beds within the argillite from 88.5 to 95. Finely disseminated pyrite abundant throughout section.	88.5-95				.85	.37										
123-199	Medium grey, fine grained dololutite with rare argillaceous laminae near 127. Extensive bedded disseminated pyrite and frequent sphalerite-galena blebs in white veinlets and patches of dolospar. Veinlets are barren of pyrite. Shale lens from 147 to 149. Intensely recrystallized and mineralized from 171-173	128-131 131-135 146.5-147 151.5-153				.07 .08 .22 .19	.34 .27 1.34 .15										
		159.5-161	60% recovery			.19	4.32										
199 - 235.5	Black argillite with minor medium grey dololutite lenses at 201.5, 205 to 215 and 222. Interbedded black finely laminated dolomitic shale. Galena-sphalerite stringer at 208.5. Finely disseminated pyrite in most of section.	164.5-169 169-173 190-192				.30 6.17 .07	.23 5.76 .07										
		208-209				.30	.06										
235.5-294.5	Medium grey medium to coarsely crystalline dolomite with small sections (less than 6" in length) of very coarse white dolospar and quartz containing coarse galena and less frequently sphalerite and pyrobitumen. Minor pyritic black shale lenses and finely disseminated pyrite in most of section. Open spaces occasionally filled with sand or grey and white dolomite crystals and black shale or carbon particles. Rock becomes increasingly brecciated after 258 with intensely recrystallized areas from 284 to 294. Slickensides at 288.	236.5-239.5 240.5-245 254-255				4.73 1.28 2.08	.01 .65 .01										
294.5-351	Silty pyritic carbonaceous shale beds from 294.5 to 295, 295.5 to 297.5, 299.5 to 303, 304.5 to 305. Interbedded with shale is above dololutite. Shale from 294.5 to 305 is very sheared and crumbled and is probably fault gouge. From 305 to end of hole is approximately half																

Drill Hole Record



Property PING District MAYO Hole No. D.D.H. # 2

Commenced July 21/75 Location South edge of Claim 9 Tests at Hor. Comp.

Completed July 23/75 Core Size AQ Corr. Dip -56° Vert. Comp.

Co-ordinates 6 E + 00 True Brg. 350° Logged by M.S. Travis

Objective To test I.P. anomaly in vicinity of Zone 3. % Recov. 80% Date August 6/75

Claim PING 10

T Brg. 350° Collar Dip -56°

Elev. 4130

Length 250 ft.

Hole No. 106C/11

Sheet 106C/11

Footage From To	Description	Sample No.	Length	Analysis	
				%Pb	%Zn
0 - 12	Overburden				
12 - 67	Medium to dark grey medium grained well recrystallized dolomite. Interlaminated with white to yellow dolospar in thin wavy laminations. Laminations are frequently separated by stylolitic carbonaceous fractures. Minor interbedded light grey sucrosic beds. Sucrosic sandy beds are dark grey from 41 to 67. Stromatactoid textures from 54 to 56.5. Minor sphalerite as stringers from 41 to 67 with galena starting at 60.		41- 42 44- 46.5 46-5- 51- 61- 67	20% recovery 5% recovery	.03 .27 .04 .95 .24 .36 .65 .04
67 - 75	Dark grey to black silty finely laminated dolomite. Minor argillaceous laminae and rarely more massive medium grey dolomitic laminae interbedded with the black silty dolomite. Minor carbonaceous stylolitic stringer crosscutting the laminations.				
75 - 109	Medium grey very fine grained finely laminated dolomitic shale. Minor random ^{pyrite} blebs along lamination planes.				
109 - 111	Black pyritic finely laminated dolomitic shale. Pyrite laminae parallel to bedding.				
111 - 204.5	Massive fine grained medium grey dololomite with rare dolospar veinlet and galena and sphalerite filling stringer from 111 to 112.5. Rare blebs of disseminated pyrite throughout section.		111- 112.5		.12 1.26
	Fault gouge from 138 to 142. Trace sphalerite smeared on stringers at 132, 134.5 and 154 to 156.		154- 156		.24 .16
	Rock is fractured more after 152 and healed with veinlets and irregular patches of white dolospar. 6" sections of fault gouge at 165 and 175.				

Scale

Colour Plot
& Dips

Drill Hole Record



Property PING District Mayo Hole No. D.D.H. # 3A

Commenced July 24/75 Location SW corner of Claim 9 Tests at Hor. Comp.
 Completed July 26/75 Core Size AQ Corr. Dip -55° Vert. Comp.
 Co-ordinates 1 + 35N; 00 + 70E True Brg. 350° Logged by M.S. Travis
 Objective Test depth extension of Zone Number Two mineralization % Recov. 75% Date August 7/75

Claim PING 9

T Brg. 350°

Collar Dip -55°

Elev. 4275 ft.

Length 250 ft.

Hole No. 3A

Sheet 106C/11

Footage From To	Description	Sample No.	Length	Analysis	
				%Pb	%Zn
0 - 13	Overburden				
13 - 50	Medium grey fine grained dololomite. Poorly laminated and spotted with light grey dololomite. Minor veinlets and patches of white dolospar. Occasional section of disseminated pyrite with iron oxides of fractures in these areas. Minor slickenside at 45. Stylolitic stringers filled with argillaceous material from 45 to 50.				
50 - 109	Black argillite interbedded with silty finely laminated medium grey dolarenite. Frequent veinlets of white dolospar crosscutting the laminations. Pyrite finely disseminated throughout section. Well brecciated from 104 to 109.				
109 - 134	Medium grey to yellow grey medium to coarsely crystalline massive dolomite. Frequent patches of tiny vugs. Rare hairline stringers of sphalerite and galena at 112.5, 117.5-121, 125-127 and trace amounts of sphalerite in vugs scattered randomly throughout the section. Disseminated pyrite as crystals in vugs and as blebs in rock is common.		112-113 117.5-121 125-127	.09 .17 .49	.06 .25 .03
134 - 250	Medium grey and white medium crystalline algal laminated dolomite with occasional stromatolite texture. Crosscutting veinlets of white dolospar and a few vugs containing coarse euhedral crystals of pyrite. Irregular patches of brown sandy dolomite. From 188 to 212 rock is extremely recrystallized but was at one time brecciated with light grey to yellow white dolomite surrounding darker rounded fragments of algal dolomite. From 212 to 216 the rock is mostly massive with occasional grey or white dolospar veinlets. Fault gouge from 216 - 218.				

Drill Hole Record



Property	PING	District	Mayo	Hole No.	D.D.H. # 4
Commenced	July 26/75	Location	NE corner of Claim 8	Tests at	Hor. Comp.
Completed	July 28/75	Core Size	AQ	Corr. Dip	-55°
Co-ordinates	1 + 60W; 00 + 75S		True Brg.	315°	Logged by M.S. Travis
Objective	Test depth extension of Zone Number One mineralization.			% Recov.	80%
				Date	August 7/75

Claim PING 8
T Brg. 315°
Collar Dip -55°
Elev. 4190
Length 301ft.
Hole No. 4
Sheet 06C/11

Footage From To	Description	Sample No.	Length	Analysis			
0 - 11	Overburden						
11 - 47	Dark grey and light grey fine to medium crystalline algal laminated dolomite. Minor stromatactoid sections with vuggy white dolospar filling in between laminations. Pisolitic from 36 -38.						
47 - 51	Intensely recrystallized zone with faint stromatactoid laminations visible in a few places. Quite vuggy and coarsely crystalline with minor coarse sandy patches.						
51 - 73	Coarsely crystalline well recrystallized medium grey dismicritic dolomite with frequent light brown sandy patches surrounding rounded grey fragments. Irregular white dolomite patches frequent. Becomes gradually finer grained from 65 to 73 ending as a medium crystalline equivalent of the above rock.						
73 - 107	Microcrystalline light grey slightly dismicritic vuggy dololomite. Rarely faint laminations are visible. Occasional stylolitic stringer parallels the laminations.						
107 - 110	Very coarsely recrystallized equivalent of above rock type with coarse dolospar crystals and minor euhedral pyrite in vugs.						
110 - 126.5	Same as 73 to 107 with laminations much more visible.						
126.5-131	Fine grained silty dolarenite becoming increasingly sandy and darker in colour until at 130						

Drill Hole Record



Property	PING	District		Hole No.	DDH 4	Claim		T Brg.		Collar Dip		Elev.		Length		Hole No.		Sheet	2
Commenced		Location		Tests at		Hor. Comp.													
Completed		Core Size		Corr. Dip		Vert. Comp.													
Co-ordinates				True Brg.		Logged by													
Objective				% Recov.		Date													
Footage	Description	Sample No.	Length	Analysis															
From To				%Pb	%Zn														
	it is a dark grey dolomitic sandstone. The rock is extremely carbonaceous and friable from 130 to 131.																		
131 - 141	Poorly laminated fine grained, medium and light grey vuggy dololomite, pisolitic in part (at 137) Small bleb of sphalerite and galena in light grey dolospar at 133.																		
141 - 178	Light grey medium crystalline dolarenite with irregular patches of black sandy dolomite. Large areas of intense recrystallization with coarse white dolospar surrounding vuggy areas. Rock is generally silty with minor carbon from 150.5 to 154. Sandy patches disappear after 154. Stylolitic stringers common throughout section.																		
178 - 179	Dark grey pyritic argillite with rare white lamination of sandy dolomite. Pyrite occurs as fine bedded disseminations.																		
179 - 250.5	Fine grained medium grey massive dololomite slightly dismicritic in places and frequently replaced by yellowish-white dolomite. Minor fault gouge from 191 to 191.5. Galena occurs as fracture fillings and disseminations at 191.5 to 193. Faint laminations visible from 231.5 to 243.		191.5-198	.93	.06														
250.5 - 252	Black argillite																		
252 - 270	Dark grey to black silty finely laminate dolarenite. Large dolospar veins up to 2" wide cross-																		

Drill Hole Record



Property **PING** District **Mayo** Hole No. **PING 75-5**
 Commenced **July 28/75** Location **NE corner of Claim 8** Tests at **Hor. Comp.**
 Completed **July 30/75** Core Size **AQ** Corr. Dip **-55°** Vert. Comp.
 Co-ordinates **1 + 60W; 00 + 75S** True Brg. **280°** Logged by **M.S. Travis**
 Objective **Test depth extension of Zone No. One mineralization** % Recov. **90%** Date **August 8/75**

Claim **PING 8**
 T Brg. **280**
 Collar Dip **-55°**
 Elev. **4190 ft.**
 Length **265.5**
 Hole No. **PING 75-5** Sheet **106C/11**

Footage		Description	Sample No.	Length	Analysis			
From	To				%Pb	%Zn	Ag	%Cd
0	10	Overburden						
10	47	Dark and light grey fine to medium grained algal laminated dolomite. Stromatactoid sections with vuggy white dolospar filling spaces between laminae. Pisolitic from 36 - 38.						
47	74	Intensely recrystallized zone with faint stromatactoid laminae visible in a few places. Quite vuggy and coarsely crystalline with minor coarse sandy patches of dolomite. Dismicritic throughout most of section. Gradually becomes finer grained until at 62 it is medium crystalline. Styrolitic stringers common from 47 to 57.						
74	111.5	Light grey, white and rarely tan interlaminated algal dololomite. Intensely recrystallized areas of coarse white dolospar with many crystal-lined vugs. Slightly dismicritic in places. Small beds (less than 3" thick) of small rounded vugs (less than 4 mm wide). The vugs are possibly recrystallized pisolites.						
111.5	139	Dark grey and light grey interlaminated stromatactoid medium grained dolarenite. Probably recrystallized equivalent of above rock type. Minor dark grey 3" sandy intervals between 126 and 135. 25% recovery from 128 - 130.						
139	160	Light grey medium crystalline dolarenite with irregular patches and laminae of coarse dark grey sandy dolomite. Intense recrystallization from 146 to 154.5. Silty patches in rock from 147 to 155.						



Drill Hole Record

Property PING District Hole No. PING 75-5

Commenced Location Tests at Hor. Comp.

Completed Core Size Corr. Dip Vert. Comp.

Co-ordinates True Brg. Logged by

Objective % Recov. Date

Footage From To	Description	Sample No.	Length	Analysis			
				%Pb	%Zn	Ag	%Cd
160 - 242	Microcrystalline white to light grey dololomite, dismicritic in places. Minor slickensides from 178 to 179. Complete recrystallization to coarse yellowish white dolospar from 180 to 186.5, 200 to 200.5, 201 to 240. Coarse grained galena and sphalerite as open space fillings with galena also filling hairline stringers from 209 to 216.5, 217 to 222.5, 223-232. Minor blebs of pyrite in most of mineralized section but after 232 mineralization is mostly pyrite with only subordinate amounts of galena and sphalerite. At 240 to 242 is a very sandy white dolomite with a large percentage of grains being pyrite. Blebs of sphalerite and galena common in this section. One unrecrystallized section of rock from 216.5 to 217. After sandy section at 240 - 242 rock is unrecrystallized microcrystalline light to medium, grey dololomite again.		176- 179.5	.05	.13		
			179.5 183	5.18	8.47	.74	.04
			183- 186.5	6.71	18.10	1.29	.08
			186.5- 190	.07	.19		
			209- 209	.08	.03		
			209- 212.5	15.83	18.00	3.33	.09
			212.5- 216.5	14.01	20.62	2.56	.10
			217- 219	18.36	12.91	4.62	.06
			219- 220.5	2.78	22.46	.65	.10
			220.5- 222.5	18.29	39.61	4.85	.17
242 - 251	Black medium to coarsely crystalline slightly laminated dolomitic siltstone. 30% recovery.		222.5- 225	.50	9.65	.29	.05
			225- 228	2.23	6.67	.47	.03
251 - 266.5	Dark and light grey medium crystalline algal laminated dolomite with frequent dark grey sucrosic sandy beds throughout section. Frequent stromatolite textures. Well fractured and brecciated from 265 to end of hole and healed with coarse white dolospar. Minor disseminations of pyrite in this section.		228- 232	8.21	18.69	1.84	.08
			232- 236	.55	.93		
			236- 238	2.43	5.28	.50	.03
			238- 242	6.03	18.09	1.38	.09
266.5	END OF HOLE.						

Claim

T Brg.

Collar Dip

Elev.

Length

Hole No.

Sheet 2

Drill Hole Record



Property PING District Mayo Hole No. PING 75-6

Commenced July 30/75 Location NE corner of Claim 8 Tests at Hor.Comp.

Completed August 1/75 Core Size AQ Corr. Dip -75° Vert. Comp.

Co-ordinates 1 + 60W; 00 + 75S True Brg. 280 Logged by M.S. Travis

Objective Test depth extension of Number One Zone mineralization % Recov. 90% Date August 8/75

Claim PING 8

T Brg. 280°

Collar Dip -75°

Elev. 4190 ft.

Length 273

Hole No. PING 75-6

Sheet 106C/11

Footage		Description	Sample No.	Length	Analysis					
From	To									
0	7	Overburden								
7	49	Dark and light grey fine to medium grained algal laminated dolomite. Stromatactoid sections with rare vugs. Pisolitic from 39 to 40.								
49	54	Recrystallized zone with faint stromatactoid laminations (2-5 mm wide) and frequent vugs. Occasional stylolitic stringer running parallel to laminae.								
54	82	Coarsely crystalline well recrystallized medium grey dismicritic dolomite with frequent light grey rounded sandy patches. Decreases in grain-size from 74 to 81.								
82	114	Light to medium grey microcrystalline dololomite (possibly algal in places). Minor veinlets of white dolospar and frequent vuggy areas.								
114	134	Dark grey and white laminated stromatactoid medium grained dolarenite, probably recrystallized equivalent of above rock type. Minor sucrosic sandy sections up to 121. Rock is generally silty from 121 to 134.								
134	136	Sandy dolomite with thin black argillite beds from 134 to 135. Very sucrosic white dolomitic sandstone cemented by black argillaceous material from 135 to 136.								
136	178.5	Light to medium grey medium grained dolarenite with irregular patches and laminae of coarse								



Scale
Colour Plot & Dips
Drill Hole Record

Property PING District Hole No. PING 75-6

Commenced Location Tests at Hor. Comp.
Completed Core Size Corr. Dip Vert. Comp.
Co-ordinates True Brg. Logged by
Objective % Recov. Date

Claim T Brg. Collar Dip Elev. Length Hole No. 2

Footage From To	Description	Sample No.	Length	Analysis			
				%Pb	%Zn	Ag	%Cd
	dark grey sandy dolomite. Pisolitic from 142.5 to 143 (only 50% recovery of pisolite section). Minor diamicritic section from 152 to 155. Rock is generally silty from 151 to 178.5.						
178.5-188.5	Medium grey fine grained massive dololutite with random dolospar-lined vugs (less than 5 mm wide) and minor dolospar veinlets.						
188.5-189	Black argillite lens about 2" wide.						
189 - 258	Same as 178.5 to 188.5 with large areas of white dolospar recrystallization. At 212 massive dololutite is again unrecrystallized but with minor veinlets of unmineralized white dolospar. Intense galena and minor sphalerite mineralization occurs as open space fillings reaching in places near massive mineralization over a few inches from 199 to 201, 204 to 212 and 216 to 217. The mineralization occurs as irregular blebs within white dolospar and very rarely as small disseminations or hairline stringers in the unrecrystallized dololutite wall rock adjacent to the areas of white dolospar. Dololutite occurs from 217 to 258 becoming slightly silty from 235 to 258 and faintly laminated. Minor stringer of dolomitic shale at about 228 (10% recovery from 227 to 229, mismatch).		191-196 199-201 201-203 203-209 209-212 215-217 217-220	.04 14.04 .07 17.15 31.08 12.59 .05	.03 6.32 .01 1.42 .19 -.42 .02	2.47 3.18 5.74 1.38	.03 tr. tr.
258 - 263	Black silty finely laminate dolarenite with random argillaceous laminae (40% recovery)						
263 - 273	Dark grey and white stromatactoid silty laminated dolomite with minor veinlets of white dolospar.						
273	END OF HOLE						



BOW RIVER RESOURCES LTD.

333 - 885 DUNSMUIR ST., VANCOUVER 1, B.C.

687-7545

OCTOBER 6, 1975
Revised Inv. #83

File

Cominco Ltd.
200 Granville Square
Vancouver, B.C.
V6C 2H2

Statement of expenses for drilling in Corn Creek:

Wages & Fringes	4,612.74
Connors Drilling Invoice	33,023.89
Mayo Helicopters	3,115.00
Grahams General Store	2,390.05
Standard Oil	69.21
White Pass Petroleum	301.71
Trans North Turbo Air	4,353.01
J.W. MacLeod expense acct.	435.07
C.P. Air	35.66
Maple Leaf Travel	298.00
Chateau Mayo Hotel	62.00
Mayo Helicopter	968.50
Don Peel Expense Acct.	364.15
Tundra Housing Ltd.	2,028.00
	<u>52,056.99</u>
Less initial investment	50,000.00
Total due Bow River Resources	<u>2,056.99</u>

*232-36-54/00
being processed
for pay'r
LWS 10/27/75*

PAYROLL FOR JULY 1975

J.W. McLeod	250.00
George Bleiler	500.00
Peter Krcmar	464.58
Donald Peel	1,500.00
John Poikans	<u>1,500.00</u>

4,214.58

Co. portion of U.I.C.	52.27
Co. portion of C.P.P.	71.95
4% Holiday Pay	168.58
2.5% W.C.B.	<u>105.36</u>
	398.16

4,612.74

TOTAL

To • Bow River Resources Ltd.
 • 333 - 885 Dunsmuir St.
 • Vancouver, B. C.

• DATE August 8, 1975

• INVOICE NO. 5998

- 2 -

FIELD COST WORK (cont'd)

DATE	SHIFT	MAN HRS.	DRILL HRS.	REMARKS
July 28	Night	5 ✓	2½	Change drill angle
30	Day	2 ✓	1	" " "
Aug. 1	"	33 ✓	11	Tear down & move to lake
2	"	24 ✓	8	Flying out to Mayo
3	"	" ✓	8	Unloading plane
4	"	16 ✓	8	" "
		<u>366</u>	<u>135½</u>	

Total man hours	366 @ 13.00	4,758.00	
Total drill hours	135½ @ 9.00	<u>1,219.50</u>	5,977.50

CORE BOXES SUPPLIED

E.G. Whalley, Inv. #7277 (attached)	230.40	
Plus 15%	<u>34.56</u>	264.96

CORE SPLITTER SUPPLIED

Packing Slip #00442 attached		
Core Splitter	329.20	
Cartage to airport	3.00	
Air Freight to Mayo	<u>23.52</u>	355.72

SUPPLIES LOST IN HOLE #1

13 pieces AQ - 10' Drill Rods @ 37.00	481.00	
1 AQ - 10' Core Barrel Assembly	411.40	
1 AQ Shell #L7YA-898	154.20	
1 AQ Core Bit #L5L-1823	<u>165.61</u>	1,212.21
		<u>33,023.89</u>

GOODS RECY'D	OK FOR PAYMENT
PRICES & EXT. OK	INVOICE NO.
COST	AMOUNT
406	33,023.89

= 18.92/ft.
 + fuel.

24,000
 5,000

None Recd. 50% OK



Graham's General Sto.

(1973) Ltd.

BOX 36 MAYO, YUKON PHONE 3541

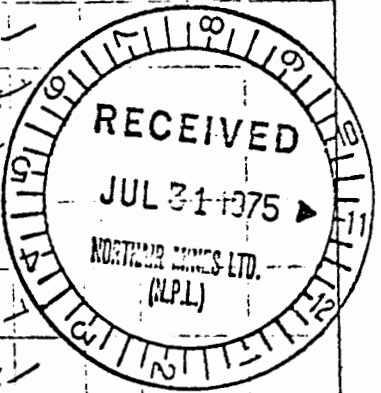
TO Bow River Resources
333 - 885 Dunsmuir St.
Vancouver, B.C.

DATE July 25/75

AMOUNT OF REMITTANCE
\$2,176.76

PLEASE RETURN THIS TOP PORTION WITH YOUR REMITTANCE

DATE	DETAILS	CHARGES	CREDITS	BALANCE
July 25/75	BALANCE FORWARD		✓	277.44
July 8/75	17340	399.43 ✓		
July 12/75	17263	9.29 ✓		
July 15/75	17283	415.14 ✓		
July 18/75	15545	143.28 ✓		
July 21/75	15578	159.65 ✓		
July 21/75	15576	185.49 ✓		
July 22/75	15591	80.13 ✓		
July 23/75	15661	7.97 ✓		
July 25/75	15704	21.94 ✓		
July 25/75	15703	98.21 ✓		
July 25/75	15702	246.40 ✓		



ACCOUNT WITH
PAYMENTS MADE AFTER DATE SHOWN
SHALL APPEAR ON NEXT STATEMENT.

STATEMENT

LAST AMOUNT IN THIS COLUMN
IS BALANCE OF YOUR ACCOUNT
AT THE DATE SHOWN.

TO Bow River Resources
333 - 885 Dunsmuir St.
Vancouver, B.C.

DATE July 25/75

AMOUNT OF REMITTANCE
\$2,176.76

PLEASE RETURN THIS TOP PORTION WITH YOUR REMITTANCE

DATE	DETAILS	CHARGES	CREDITS	BALANCE
	BALANCE FORWARD			
July 25/75	15680	33.29 ✓		
July 25/75	15679	31.01 ✓		
July 25/75	15677	26.73 ✓		
July 25/75	15676	41.36 ✓		
July 25/75	Balance			2,176.72

GOODS REC'D	OK FOR PAYMENT
PRICES & EXT. CK 8-5-75	# 2296
4-10 CC	2,176.72
296 HH	

ACCOUNT WITH
PAYMENTS MADE AFTER DATE SHOWN
SHALL APPEAR ON NEXT STATEMENT.

STATEMENT

LAST AMOUNT IN THIS COLUMN
IS BALANCE OF YOUR ACCOUNT
AT THE DATE SHOWN.

\$ 277.44

Standard Oil Company of British Columbia Limited 1972 006-00

KEEP THIS STATEMENT
 33907 975
 1975
 6921
 TOTAL AMOUNT DUE
 6921

FEB 76
 White Service Petrol
 1175
 6 00
 STATEMENT COPY
 WW

OK FOR PAYMENT	DATE	AMOUNT
8/2/76	1175	
GOODS RECEIVED	PRICES & EXT. OK	

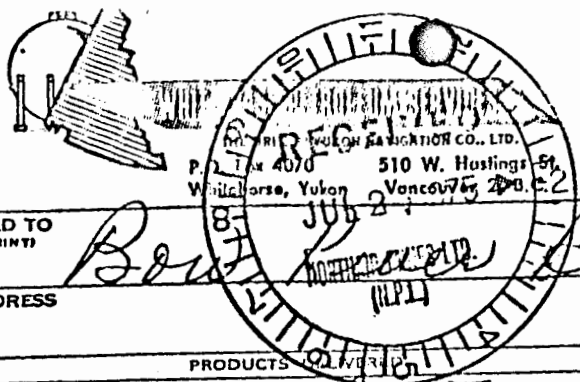
1175
 1175

ALL BALANCES ARE SUBJECT TO CHARGE OF THE



THIS IS YOUR INVOICE

DELIVERY INVOICE NO. 902000



STATION *Mayo* DATE *July 8 1975*

SHIPPED TO TRUCK NO. TRIP NO.

SOLD TO (PRINT) *Bob Resources 8743* CUSTOMER'S ORDER OR REQ. NO. *8743*

ADDRESS *Bob Resources (NPL)* WP. NO. LOC. DELIVERED BY *A. Nutter*

PRODUCTS	SIZE OF PACKAGE	QUANTITY	PRICE	AMOUNT
<i>G 78 X 15 Trestlesuper R Belt</i>		<i>1</i>	<i>35.80</i>	<i>35 80</i>
<i>100/130</i>	<i>3 Drs</i>	<i>135</i>	<i>.818</i>	<i>110 43</i>
<i>Whse. hauling</i>		<i>135</i>	<i>11</i>	<i>14 85</i>
<i>Hauling to dock</i>		<i>3 Drs</i>	<i>1.00</i>	<i>3 00</i>

GOODS REC'D OK FOR PAYMENT

PRICES & EXT. OR AMOUNT

RECEIVED PAYMENT

CASH _____

CHEQUES _____

EXCH. _____

TOTAL _____

TAX (SPECIFY) *135 GALS. @ 02* AMOUNT *2 70*

PRODUCTS RECEIVED BY *Med Baker*

APPROVED _____ CHECKED _____

TERMS - NET CASH (NO DISCOUNT) TOTAL *241 78*

WHITE PASS & YUKON ROUTE

P.O. BOX 4070
WHITEHORSE, YUKON Y1A 3T1

PLEASE REFER TO THIS WAYBILL NUMBER WHEN PAYING

229366

MANIFEST *MG* DATE *JULY 14/75*

CONSIGNEE AND DESTINATION *DOV RIVER RESOURCES C/O TENTERA EXPDITING MAYO, Y.T* DEST. *53* CONSIGNEE ACCOUNT *708743*

SHIPPER AND ORIGIN *CANADIAN PORPANE* WHITEHORSE ORIGIN *16* SHIPPER ACCOUNT *15411*

ADVANCE CARRIER _____ CODE _____ BEYOND CARRIER _____ CODE _____

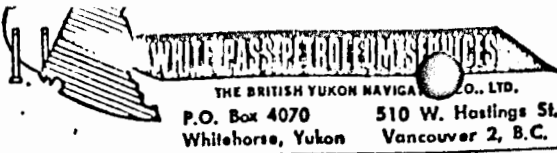
PIECES	DESCRIPTION OF ARTICLES AND MARKS	WEIGHT	RATE	COLLECT	PREPAID
<i>1</i>	<i>HARDWICK RANGE SER NO 5347</i>	<i>140</i>		<i>7.00</i>	
				ADVANCES OR BACK	PREPAID TO APPLY
				C.O.D. AMOUNT	PREPAID BEYOND
				C.O.D. FEE	
				TOTAL <i>7.00</i>	

*Charge to 8743
How Baker Resources*

EXCEPTIONS MUST BE NOTED AT TIME OF DELIVERY

RECEIVED PAYMENT - DRIVER

RECEIVED IN GOOD ORDER



THE BRITISH YUKON NAVIGATION CO., LTD.
 P.O. Box 4070 510 W. Hastings St.
 Whitehorse, Yukon Vancouver 2, B.C.

SHIPPED TO *Mt. ...* TRUCK NO. *...* TRIP NO. *...* DATE *JULY 27 1975*

SOLD TO (PRINT) *Bow River Resources* 8743
 ADDRESS *Bow River Resources* WP. NO. *...* LOC. *...* CUSTOMER'S ORDER OR REQ. NO. *8743*
 DELIVERED BY *M. Hutto*

PRODUCTS DELIVERED	SIZE OF PACKAGE	QUANTITY	PRICE	AMOUNT
<i>Diesel</i>	<i>DR</i>	<i>45</i>	<i>647</i>	<i>29 12</i>
		<i>45 GALS. @ 16</i>		<i>7 22</i>
			TOTAL	36 32

RECEIVED
 AUG 18 1975
 NORTH STAR SERVICES LTD. (N.P.L.)

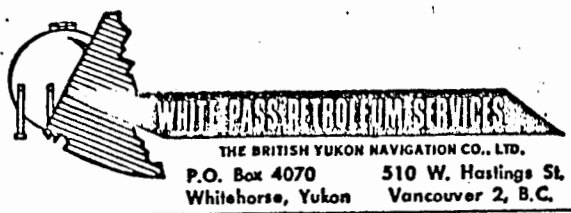
GOODS RECEIVED	OK FOR PAYMENT
PRICES & EXT. OK	CHEQUE NO.
	AMOUNT

RECEIVED PAYMENT
 CASH _____
 CHEQUES _____
 EXCH. _____
 TOTAL _____

DRUM CHARGES _____
 DRUM CREDITS _____

TERMS - NET CASH (NO DISCOUNT)

APPROVED _____ CHECKED _____
 BY *B. Graham*



THE BRITISH YUKON NAVIGATION CO., LTD.
 P.O. Box 4070 510 W. Hastings St.
 Whitehorse, Yukon Vancouver 2, B.C.

THIS IS YOUR INVOICE DELIVERY INVOICE NO. **932505**

STATION *Mt. ...* DATE *July 28 1975*
 SHIPPED TO *Mt. ...* TRUCK NO. *...* TRIP NO. *...*

SOLD TO (PRINT) *Bow River Resources* 8743
 ADDRESS *Bow River Resources* WP. NO. *...* LOC. *...* CUSTOMER'S ORDER OR REQ. NO. *8743*
 DELIVERED BY *J. Nelson*

PRODUCTS DELIVERED	SIZE OF PACKAGE	QUANTITY	PRICE	AMOUNT
<i>Primitive Gravel cut w/box</i>	<i>case</i>	<i>1</i>	<i>16.61</i>	<i>16 61</i>
			TOTAL	16 61

RECEIVED
 AUG - 3 1975
 NORTH STAR SERVICES LTD. (N.P.L.)

GOODS RECEIVED	OK FOR PAYMENT
PRICES & EXT. OK	CHEQUE NO.
	AMOUNT

RECEIVED PAYMENT
 CASH _____
 CHEQUES _____
 EXCH. _____
 TOTAL _____


DRUM CHARGES _____
 DRUM CREDITS _____

TERMS - NET CASH (NO DISCOUNT)

APPROVED _____ CHECKED _____
 BY *B. Graham*

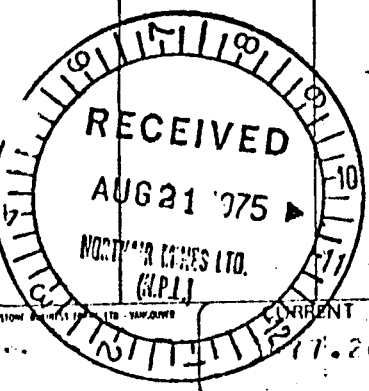
FORM PET 835 65M 73

ODW RIVER RESOURCES
333 885 DUNSMUIR ST
VANCOUVER B.C.

**T
N
T**  **TRANS NORTH TURBO AIR (1971) LTD.**
P.O. BOX 4338, WHITEHORSE AIRPORT
WHITEHORSE, YUKON.
PHONE 668-2177 : TELEX 036-8290

OPENING BALANCE **891.00**

REF. NO.	DATE	DESCRIPTION	DEBIT	CREDIT	BALANCE
009705	10/07/75	INVOICE	585.86		1476.86
010045	15/07/75	INVOICE	297.00		1773.86
010055	15/07/75	INVOICE	297.00		2070.86
010061	23/07/75	INVOICE	297.00		2367.86
010086	30/07/75	INVOICE	148.50		2516.36
010319	23/07/75	INVOICE	682.00		3198.36
010320	23/07/75	INVOICE	592.10		3790.46
011087	22/07/75	INVOICE	297.00		4087.46
011094	25/07/75	INVOICE	192.25		4269.71
011112	30/08/75	INVOICE	98.55		4368.26
002227	28/07/75	PAYMENT		3477.00	3477.26
GOODS REC'D			OK FOR PAYMENT	<i>Feb.</i>	
PRICES & EXT. OK			CHEQUE NO.		
CODE			AMOUNT		
			<i>7-10</i>	<i>3477.26</i>	
CURRENT			30-60	60-90	OVER 90
17.26			.00	.00	.00
					TOTAL DUE
					3477.26



Con br.
50% H.H.K.

CHAFFERTH'S SIGNATURE
Bobby Chaffert
WILDT'S SIGNATURE
ENGINEER'S NAME

OTHER		
OTHER		

TOTAL \$ 585.86

Con br.
50% H.H.K.

INVOICE

Date July 30, 1975

EXPENSE ACCOUNT

In account with J.W. MacLeod
(Name and Address)

Expenses incurred TRIP TO CORN CREEK
(Description and date)
1/2 Bow River 1/2 HIGHTHAWK

STATEMENT OF ACCOUNT

Cash on hand last account _____ \$
Advances received _____ \$
Expenses as per this account _____
Cash on hand _____ \$

Note: If space provided below is insufficient, please use supplementary page and bring totals forward.

	Details (attach receipts)	Trans- portation	Hotel & Meals	Supplies	Other	Acct./ Job No.
	Totals from supplementary page(s)					
21	VANCOUVER TAXI TO AIRPORT	7 00				
21	" - AIR FARE VAN-WHESE-VAN	212 00				
21	BRANFORD - MEALS		8 55			
21	" - GAS	13 50				
23	Mayo - MEALS		23 35			
22	" - MOTEL	1	16 00			
23	STEWART (ROSS) - GAS	15 62				
23	CASHMACKS - MOTEL		24 00			
24	WHITEHORSE - MEALS		7 10			
24	" - FORMS			1 95		
24	" - AIR FARE - SWITZ	106 00				
	Column totals	354 12	79 00	1 95		

Charge acct. No.

Total expenses 435.07

AH 217.54
BR 217.53

GOODS RECEIVED	CHEQUE FOR PAYMENT
PRICES & EXT. OK	CHEQUE NO. 2253
CODE	AMOUNT
709	435.07

This is my account for expenses incurred on Company business

J.W. MacLeod
Employee's Signature

Approved

Accounting Department, Vancouver Airport, B.C.
 U-N-S 20-109-9421

Canadian Pacific Air Lines, Limited
 405650

Station: VANCOUVER
 Flight/Day: 018-09136083
 Flight/Day: (blank)

Bow River Resources
 333 - 885 Dunsmuir Street
 Vancouver, B.C.

Not negotiable
Air Waybill
 (Air Conignment note)
 Issued by
Canadian Pacific Air Lines, Limited,
 Vancouver, B.C., Canada

CP Air

Member of International
 Air Transport Association

CP Air Ref.	Document Reference	Inv. Date	Amount
RA1984	018-09136083 YXYVVR	Aug 25/75	\$35.66

If the carriage involves an ultimate destination or stop in a country other than the country of departure, the Warsaw Convention may be applicable and the Convention governs and in most cases limits the liability of carriers in respect of loss of or damage to cargo. Agreed stopping places are those places (other than the places of departure and destination) shown under requested routing and/or those places shown in carriers' timetables as scheduled stopping places for the route. Address of first carrier is the airport of departure
 SEE CONDITIONS ON REVERSE HEREOF

This Is Both An Invoice And A Statement, Please
 Pay On This Document Due In 7 Days.

The shipper certifies that the particulars on the face hereof are correct, agrees to the CONDITIONS ON REVERSE HEREOF, accepts that carrier's liability is limited as stated in 4(c) on the reverse hereof and accepts such value unless a higher value for carriage is declared on the face hereof subject to an additional charge

SIGNATURE OF SHIPPER OR HIS AGENT

Carrier certifies goods described below were received for carriage subject to the Conditions on reverse hereof, the goods then being in apparent good order and condition except as noted hereof.

EXECUTED ON AUG 23/75 at (Place)

L S RANDALL

SIGNATURE OF ISSUING CARRIER OR ITS AGENT

Copies 1, 2 and 3 of this Air Waybill are originals and have the same validity.

WHITEHORSE Y
 AUG 28 '975
 NORTH PACIFIC LTD
 Issuing carrier's agent account no
 Agent's IATA Code

5	Currency: NYD	Declared value for carriage	Declared value for customs	Amount of insurance	INSURANCE: If shipper requests insurance in accordance with conditions on reverse hereof, indicate amount to be insured in figures in box marked amount of insurance
---	---------------	-----------------------------	----------------------------	---------------------	--

6	WEIGHT CHARGE AND VALUATION MAKE PREPAID COLLECT		ALL OTHER CHARGES AT ORIGIN PREPAID COLLECT		Accounting information		Nature and quantity of goods (incl dimensions or volume)
	No of packages RCP	Actual gross weight	Rate class	Chargeable weight	Rate/Charge	Total	
	2	126	COL	26	26	32.76	SACKS OF ROCK SAMPLES

7	Prepaid weight charge	Prepaid valuation charge	Due carrier	Total other prepaid charges	Due agent	Total prepaid	For carrier's use only at destination
R	Other charges (except weight charge and valuation charge) Insurance Charge: Carriage Charge:					Del	32.76
S	VRA1984						2.90
T							COO amount
							Total charges

8	Collect weight charge	Collect valuation charge	Due carrier	Total other collect charges	Due agent	COO amount	Total collect
	32.76						35.66

9
 Handling information: Gabrielle Leung LP
 These Commodities licensed by U.S. for ultimate destination. Diversion contrary to U.S. law prohibited

"In The Event That This Air Waybill Is Used As A Complete Shipping Document From The Vendor To The Purchaser, Carriage Of Goods In Canada Other Than By Air Is Subject To The Terms And Conditions Contained In The Tariffs Of The Individual Canadian Surface Carrier And Is Not Governed By The Terms And Conditions Of The Air Carrier's Tariffs."

(604) 681-5164



MAPLE LEAF TRAVEL

LTD.
627 HORNBY STREET, VANCOUVER, B.C. V6C 2G3

IN ACCT. WITH: **Mr. J. W. McLeod** 10/08/75
DAY / MON. / YEAR

ADDRESS: **Bow River Resources**
885 DUNSMUIR ST.
VANCOUVER, BC.

PASSENGER(S): **Mr. J. W. McLeod**

DETAILS	AMOUNT
CP AIRLINES : 018 4400 997 543	\$
VANCOUVER / WHITE HORSE / Mayo	
RETURN	290 00
9/3/75 9/3/75	8 00
#2279	
4.09	254.00
Coach	348.00
	44.00 CA
	254.00
THANK YOU	
50th HAK	
CASH	
CHARGE <input checked="" type="checkbox"/>	
CR. MEMO	
OFFICE USE	
CREDIT CARD	

INVOICE NO. **7851**

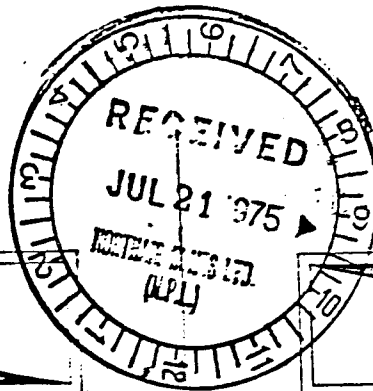
PLEASE MAKE PAYMENT WITHIN 10 DAYS OF DATE OF THIS INVOICE

TOTAL \$ 298 00

F. & O.E.

WHITE TO CUST. BUFF TO ACCOUNTING. PINK TO FILING.

116
CHARTER TICKET
MAYO HELICOPTERS



CHARTER TICKET
MAYO HELICOPTERS

MAYO, Y.T. BOX 5 / PHONE 996-3291

WHITEHORSE, Y.T. BOX 2295 PHONE 633-2214

MAYO, Y.T. BOX 5 PHONE 996-3291

WHITEHORSE, Y.T. BOX 2295 PHONE 633-2214

Altitude 12000 FT OF FHT DATE July 13 1975
NAME Bow River

A/C MLW OF MLW DATE 8 Jul 1975
NAME Bow River Resources Ltd

ADD _____

ADD _____

FROM	MILES	HOURS	CARGO	PASS.	REMARKS
<u>Camp</u>					
<u>local July 12</u>		<u>1.9</u>			
<u>July 13</u>		<u>1.2</u>			

FROM	MILES	HOURS	CARGO	PASS.	REMARKS
<u>Potter Ruddle</u>					
<u>Pung Lake</u>		<u>2.7</u>			

SPECIAL INSTRUCTIONS

OUR FUEL _____ GALS.

THEIR FUEL GALS.

AREA _____

PICK UP DATE _____

LOCATION _____

SEE REVERSE FOR CONDITIONS

WAITING TIME @ _____ PER HOUR

EXTRA LANDINGS @ _____ PER LANDING

OTHER _____

TOTAL \$770.00

SPECIAL INSTRUCTIONS

OUR FUEL _____ GALS.

THEIR FUEL GALS.

AREA _____

PICK UP DATE _____

LOCATION _____

SEE REVERSE FOR CONDITIONS

WAITING TIME @ 2.7 @ 175 PER HOUR 472

EXTRA LANDINGS @ _____ PER LANDING

OTHER _____

TOTAL 472

CHARTER'S AUTHORIZATION

CHARTER'S AUTHORIZATION

338

3379 MAYO BASE

BOW RIVER RESOURCES LTD.
 333-885 Dunsmuir Street
 Vancouver 1, B.C.

EXPENSE SUMMARY SHEET FROM Aug 3 TO Sept 31, 1975

NAME Don Peck + John Polansky CHEQUE # _____ DATE Sept 7/75

Iron Creek

EXPLORATION & DEVELOPMENT EXPENSES

	<u>Property</u>	<u>Amount</u>
1. Assays	_____	1. _____
2. Fuel & Oil	_____	2. _____
3. Freight	<u>B + SEE GROUP</u>	3. <u>16.53</u>
4. Hotel & Meals	_____	4. <u>391.15</u> 215.00
5. Licences	_____	5. _____
6. Maps	<u>DETOUR LAKE - END GROUP</u>	6. <u>1.50</u>
7. Promotion	_____	7. _____
8. Telephone	_____	8. _____
9. Repairs & Maintenance	_____	9. <u>41.90</u>
10. Supplies	_____	10. _____
11. Travel - auto	_____	11. <u>125.73</u>
- air	_____	_____
- other	_____	_____
12. Miscellaneous	_____	12. <u>9.60</u>
Taxi	_____	_____
Tips	_____	_____
TOTAL	_____	\$ <u>700.29</u>
Less: Cash Advance	_____	497.54
AMOUNT DUE	_____	\$ <u>(100.00)</u>

Handwritten notes:
 52% CC = 364.15
 35% Detour = 245.10
 13% Minto = 91.04
 700.29
 114K 182.08
 FR 122.55
 45.52
 GST

ADMINISTRATION EXPENSES

1. Advertising & Promotion	_____	1. _____
2. Gas & Oil	_____	2. _____
3. Hotel & Meals	_____	3. _____
4. Office Supplies	_____	4. _____
5. Printing & Stationery	_____	5. _____
6. Telephone	_____	6. _____
7. Travel - auto	_____	7. _____
- air	_____	_____
- other	_____	_____
8. Miscellaneous	_____	8. _____
TOTAL	_____	\$ _____
Less: Cash Advance	_____	_____
AMOUNT DUE	_____	\$ _____

PURCHASE ORDER

61902

THIS NUMBER MUST APPEAR ON ALL INVOICES, PACKAGES, ETC.

TO TUNDRA HOUSING LTD.

ADDRESS 1640 Kent St. Vancouver, B.C.

REQ. NO. OR DEPT.

SHIP TO

DATE Mar. 13th. /75

ADDRESS via. Yukon & Whitepass

FOR

PLEASE NOTIFY US IMMEDIATELY IF YOU ARE UNABLE TO SHIP COMPLETE ORDER BY DATE SPECIFIED

Bow River Resources Ltd.
333 885 Dunsmuir
VANCOUVER, B.C.

QUANTITY	PLEASE SUPPLY ITEMS LISTED BELOW	PRICE
1	1 Only 16' x 12' Tundra Cabin.	
2	1 Aluminum window, 1 Aluminum door.	
3	Walls, floor and roof insulated	
4	1" Esfen. Aluminum roof.	\$2007.00
5	F.O.B. Vancouver,	
6	Terms - Net Cash.	
7	<i>pick up Summer</i>	21 00
8		2028 00
9		
10		

DATE REQUIRED HOW SHIP

PLEASE SEND COPIES OF YOUR INVOICE

TERMS

[Signature]
PURCHASING AGENT

