

DIAMOND DRILL RECORD

DD-220

PROPERTY Rose Silver - Mayo Yohan No. I Vein
 DATE COLLARED October 1972
 DATE COMPLETED _____
 CORE SIZE NQ - Mud drilling
 E. Carson Diamond Drilling Lubricants

LAT. 30.102 N
 DEP. 30.638 E
 ELEV. 3558' (approx.)

BEARING S 45° 09' 27" W
 DIP. -50°
 TOTAL DEPTH 164'

HOLE No. 72-1
 SHEET 1 OF 3
 LOGGED BY L. B. G.
 DATE Dec 1972

From	To	Description	Number	From	To	Width	R _g cwt	Zn %	Coverage	Recovery %
0	20'	No core							20-25 1/2	90%
20'	28'	Soft banded argillaceous phyllite. Black siliceous ore schist places. Rock composition banding parallel to schistosity at 45° to core							25 1/2-27	80
									27-30	60
									30-32	50
28'	31'	Light grey sericitic arkose bed conformable to schistosity at 30° about 1' silicified and containing 10% irreg vugs							32-35 1/2	95
		qtz str cutting schistosity							35 1/2-37	90
									37-39	95
31	37	Soft black argillaceous phyllite.	P1	30	31	1.0'	<0.01	0.03	39-42	90
37	50	Soft light brown siltstone schist with variable quartz to near quartzite. Few quartz stringers							42-44	70
		37' - 2" broken white qtz - no measured plus 1/2"							44-49	45
		gouge slip at 60°							49-53	90
									53-55 1/2	50
50	66	Variable black phyllite to brown colored arkose.							55 1/2-58	65
		50' - 6" in A several 1/2" qtz str and hard siliceous black phyllite. qtz str irregular attitudes	P2	50	50.5	0.5'	<0.01	<0.01	58-60	90
		55' - 1" qtz str.							60-62 1/2	90
		57' to 58' - vugty fractured broken qtz stringer in arkose	P4	57	58	1.0'	<0.01	<0.01	62 1/2-69	80
									69 1/2-71	90
									71-72 1/2	50
		65' - 8" hard white quartz, broken core	P3	65	65.8	0.8'	<0.01	<0.01	72 1/2-74	90
		Some vugty vugs.							74-77	50
66	94.5	variable brown to light grey arkose grading to quartzite bedding and schistosity generally parallel at 45° varying							77-83	90
									83-84	90

DIAMOND DRILL RECORD

PROPERTY _____

DATE COLLARED _____

DATE COMPLETED _____

CORE SIZE _____

LAT. _____

DEP. _____

ELEV. _____

BEARING _____

DIP. _____

TOTAL DEPTH _____

HOLE No. 72-1

SHEET 2 OF 3

LOGGED BY _____

DATE _____

From	To	Description	Number	From	To	Width	Ag. cont	Zn %	Core Recovery %	Recovery %
		up to 85° between 70' and 80' Rock grain size variable								84-90 98%
		From dust to 2 mm on gte grains								90-94 95
		80' - 4" white granite.								94-96 90
92.5	132'	Black soft argillaceous phyllite. Rusty frags and								96.5-99 50
		poor core recovery								99-100 50
		99'-103' - rusty fractured silic material plus a little	P5	99'	103'	4.0'				100-103 50
		broken white quartz plus black gouge material								103-105 23
		113'-116' - black gouge material with some rusty	P6	113'	116'	3.0	1.40	<0.01		105-110 50
		streaks - No gte								110-113 30
		117 1/2' - 121' - light grey silicified bi-associated zone	P7	117.5'	121'	3.5'	0.09	<0.01		113-114 90
		with a little gte. several pcs of broken core with								114-117 60
		heavy sulfides at 121'. About 50% core recovery								117-120 50
										120-122 50
132'	141'	Variable black phyllite and ^{light grey} quartzite. Bedding								122-125 50
		and schistosity about parallel at 70° except around								125-129 90
		141' where bedding at 45° is cut by schistosity								129-132 70
										132-133 85
141'	152 1/2'	Light grey quartzite containing short sections of black								133-137 90
		phyllite. Schistosity is parallel to vein zones								137-139 70
		at 80°								139-142 80
		143'-149 1/2' - vein zone containing silic brecciated	P8	143 1/2'	147 1/2'	4.0	0.01	<0.01		142-143 50
		sections 147 1/2'-149 1/2' and gte dust 149-149 1/2'	P9	147 1/2'	149 1/2'	2.0	0.06	0.04		143-152 90

DIAMOND DRILL RECORD

DD-220

PROPERTY Pose Silver - Maza Yukon No. I Vein
 DATE COLLARED October 1972
 DATE COMPLETED " "
 CORE SIZE NG - Mud Drilling
 E. Carson Diamond Drilling - Whitehorse

LAT. 30,102 N
 DEP. 30,638 E
 ELEV. 3558' (approx)

BEARING S15° E
 DIP. -50°
 TOTAL DEPTH 250'

HOLE No. 72-3
 SHEET 1 OF 3
 LOGGED BY L.B.G.
 DATE Dec. 1972

From	To	Description	Number	From	To	Width	Ag. c/t	Zn %	Core Recovery
									Feas %
0'	20'	No. Core							18-23 90%
20'	98'	Mainly arkose sericite schist, brown to fawn color with sheet sections of quartzite and also black phyllite schistosity seems to generally follow bedding at 45° schistosity stronger in soft rocks and gives gneissic texture in harder rocks 62' - 2" sp white quartz 74' - 6" white quartz roughly parallel to schistosity at 60° in black phyllite with ± 4" bedding of black phyllite on each wall to fawn color but soft.							23-26 95% 26-28 95% 28-31 80 31-32 95 32-33 95 33-37 80 37-40 65 40-42 80 42-44 90 44-45 98 45-47 70 47-49 85 49-50 30 50-54 45 54-57 95 57-62 60 62-64 90 64-68 90 68-72 95 72-76 95 76-81 85

DIAMOND DRILL RECORD

DD-220

PROPERTY _____

DATE COLLARED _____

DATE COMPLETED _____

CORE SIZE _____

LAT. _____

DEP. _____

ELEV. _____

BEARING _____

DIP. _____

TOTAL DEPTH _____

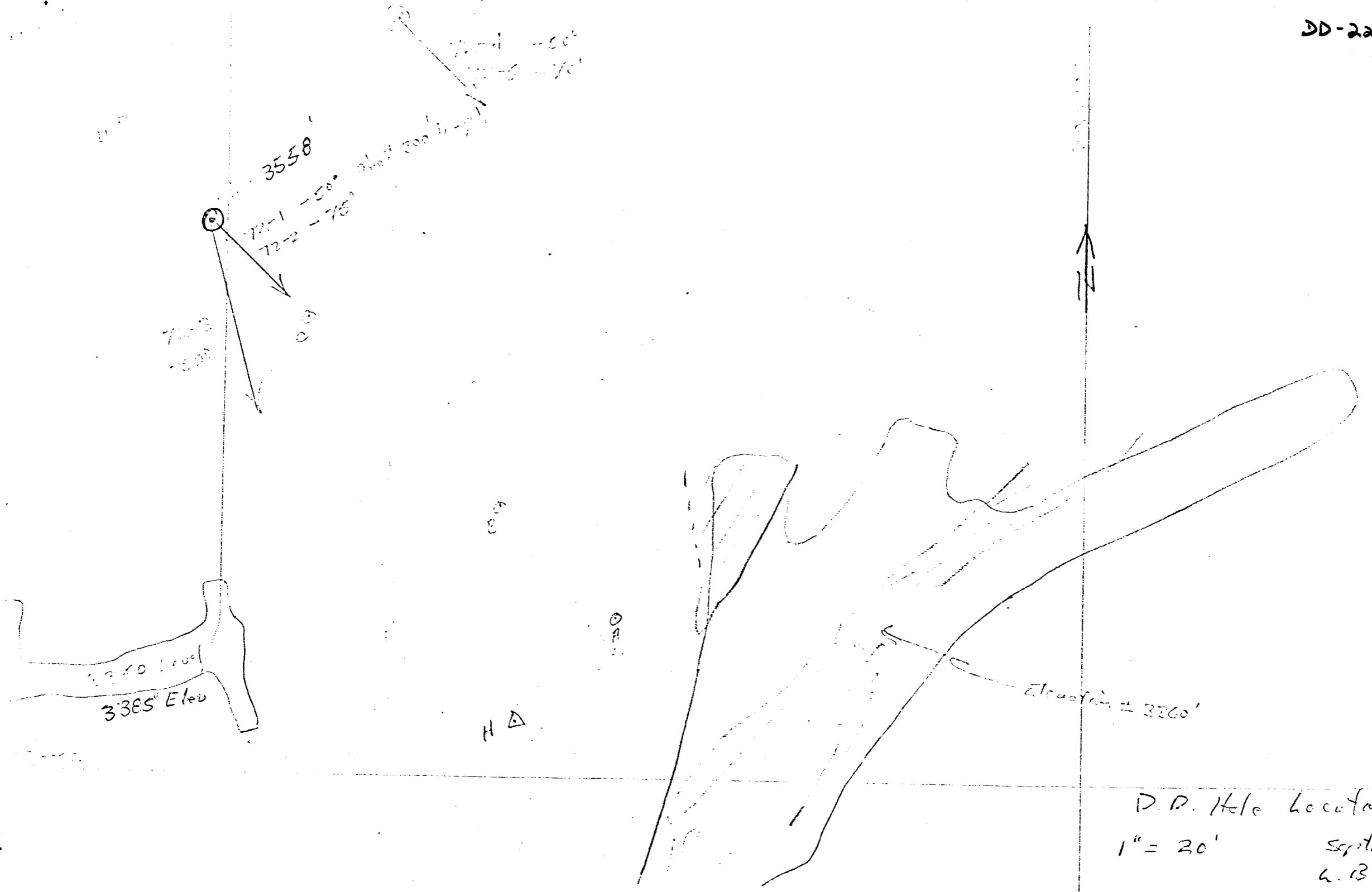
HOLE No. 72-3

SHEET 3 OF 3

LOGGED BY _____

DATE _____

From	To	Description	Number	From	To	Width		Core Estimate	Reconst. %
175	205	Light grey hard fine grained quartzite. Variable fracturing replaces schistosity in hard rock. Short sections of phyllite						159-162	55%
								162-165	62
								165-168	35
		186" - 4" of quartz stringers and silicification						168-171	90
		190" - 2" quartz stringer. No mineralization						171-172	35
								172-173	80
205'	250'	Mixture of short sections of bedded phyllite, light grey quartzite and arkose. Short sections of bedding at variable angles, but generally schistosity and bedding parallel at about 70°.						173-177	50
								177-180	30
								180-182	85
								182-185	90
								185-191	80
								191-193	70
								193-198	90
								198-201	80
								201-203	80
								203-205	85
								205-211	90
								211-216	95
								216-221	95
								221-224	95
								224-228	95
								228-250	95



G

3558'

T2-1 -58°
T2-2 -75°

T2-3
-50°

0.3

T2-4 -60°
T2-5 -70°

about 200 ft

3385' Elev

H Δ

Elevation = 3360'

D.P. Hole Location
1" = 20'
Sept. 1970
L.B.G.

