

DIAMOND DRILL - SUMMARY LOG

Property CLEAR LAKE Property No. 5002 Hole Number 79-19
 Coordinates : 6 1961 326.00 N 491 959.48 E Commenced Drilling : JUNE 29, 1979
 Collar Elevation : 2338.2' (712.88 m) Completed Drilling : JUNE 29, 1979
 Bearing at Collar : 266° Total Depth : 805'
 Dip at Collar : -60° Logged By : G. NORMAN (1983)
 Core Size / Method : NQ/BQ Claim : S4E 2012/3004F
 Drilling Contractor : HEATH : SHERWOOD

SURVEY SUMMARY				PERTINENT ASSAY DATA			PERTINENT GEOLOGY		
Depth	Dip	Bearing	Method	Interval	Zn%	Pb%	Ag oz/t	Interval	Rock Type
Collar	-60°	266°		392' - 758'	4.40	0.82	—	0-15'	Overburden
450'	-52°	250°	Tropari	405' - 425'	6.45	1.76	0.79	15'-90'	Argillite (2b)
800'	-57°	250°	"	677' - 725'	16.05	1.91	1.66	90'-173.5'	Argillite (2c)
								173.5'-179.5'	Breccia/Conglomerate (3)
								179.5'-193'	Argillite (2c)
								193'-205'	Breccia/Conglomerate (3)
									minor pyrite.
								205'-382'	Argillite (2b)
									233'-275 fault zone
								382'-384.5'	Massive Sulphides (A)
								384.5'-389'	Argillite (2a)
								389'-400'	Argillite (2a)/Lapilli Tuff (5)

DIAMOND DRILL SUMMARY LOG

 Property CLEAR LAKE

 Property No. 5002

 Hole Number 79-19

SURVEY SUMMARY

PERTINENT ASSAY DATA

PERTINENT GEOLOGY

Depth	Dip	Bearing	Method	Interval	Interval	Rock Type
						quartz, pyrite stockwork.
					400'-488'	Massive Sulphides (A)
					406'-409'	Pb-Zn averages 10-12%.
					488'-498'	Chert (4) pyrite stockwork.
					498'-758'	Massive Sulphides (A)
					555'-572'	sphalerite and galena up to 10% in places.
					612'-618'	abundant sphalerite.
					690'-725'	higher grade section with up to 20% sphalerite-associated with silicification.
					758'-805'	Chert (4)
					779.6'-780.6'	massive sulphides.
					780.6'-805'	Weak to moderate pyrite stockwork

ASSAY DATA

SAMPLE NUMBER	FOOTAGE			ASSAYS		
	From	To	Length	Zn%	Pb%	Ag oz/t
9041	392.0	399.0	7.0	0.21	0.09	
9042	399.0	405.0	6.0	4.80	1.07	0.40
9043	405.0	410.0	5.0	8.05	2.15	0.78
9044	410.0	415.0	5.0	6.00	1.26	0.71
9045	415.0	420.0	5.0	6.70	1.75	0.88
9046	420.0	425.0	5.0	5.05	1.89	0.79
9047	425.0	430.0	5.0	4.15	1.63	0.70
9048	430.0	435.0	5.0	4.85	1.23	0.72
9049	435.0	445.0	10.0	1.81	0.45	
9050	445.0	455.0	10.0	3.80	0.83	
9051	455.0	465.0	10.0	0.94	0.28	
9052	465.0	471.0	6.0	0.77	0.30	
9053	471.0	480.0	9.0	0.68	0.17	
9054	480.0	488.0	8.0	1.11	0.39	
9055	488.9	493.0	5.0	0.60	0.17	
9056	493.0	498.0	5.0	0.40	0.06	
9057	498.0	506.0	8.0	4.95	1.25	0.43
9058	506.0	512.0	6.0	4.02	1.61	0.34
9059	512.0	517.0	5.0	1.77	0.51	0.08
9060	517.0	525.0	8.0	3.00	0.77	0.30
9061	525.0	530.0	5.0	4.30	0.90	0.44
9062	530.0	535.0	5.0	5.10	0.88	0.66
9063	535.0	542.0	7.0	4.00	0.96	0.48
9064	542.0	552.0	10.0	0.57	0.29	0.22
9065	552.0	555.0	3.0	1.08	0.38	0.32
9066	555.0	560.0	5.0	3.25	1.71	0.36
9067	560.0	565.0	5.0	3.30	1.16	0.16
9068	565.0	572.0	7.0	3.15	1.67	0.31
9069	572.0	582.0	10.0	1.75	0.24	0.17
9070	582.0	588.0	6.0	2.49	0.55	0.26

SAMPLE NUMBER	FOOTAGE			ASSAYS		
	From	To	Length	Zn%	Pb%	Ag oz/t
9071	588.0	593.0	5.0	3.05	0.82	0.33
9072	593.0	600.0	7.0	2.08	0.61	0.22
9073	600.0	605.0	5.0	1.66	0.29	0.30
9074	605.0	612.0	7.0	1.60	0.32	0.28
9075	612.0	618.0	6.0	7.83	0.18	1.13
9076	618.0	625.0	7.0	0.40	0.14	0.30
9077	625.0	630.0	5.0	3.35	0.18	0.57
9078	630.0	635.0	5.0	2.90	0.16	0.30
9079	635.0	645.0	10.0	4.43	0.55	0.55
9080	645.0	650.5	5.5	5.95	0.61	0.68
9081	650.5	655.0	4.5	2.78	0.37	0.29
9082	655.0	659.5	4.5	0.19	0.10	0.09
9083	659.5	667.0	7.5	2.40	0.36	0.08
9084	667.0	677.0	10.0	2.20	0.37	0.25
9085	677.0	686.0	9.0	5.98	0.82	0.68
9086	686.0	690.0	4.0	9.75	0.88	0.52
9087	690.0	695.0	5.0	19.00	1.99	1.87
9088	695.0	700.0	5.0	24.35	2.44	2.77
9089	700.0	705.0	5.0	16.20	2.92	1.87
9090	705.0	710.0	5.0	16.10	2.00	1.14
9091	710.0	715.0	5.0	17.50	2.36	2.29
9092	715.0	720.0	5.0	29.00	2.25	2.16
9093	720.0	725.0	5.0	13.40	2.18	2.21
9094	725.0	730.0	5.0	1.20	0.57	
9095	730.0	740.0	10.0	0.08	0.06	
9096	740.0	745.0	5.0	0.04	0.02	
9097	745.0	754.0	9.0	0.07	0.05	
9098	754.0	758.0	4.0	0.07	0.04	
*9639	759.0	769.0	10.0	0.01	0.01	0.01
*9640	769.0	779.0	10.0	0.01	0.02	0.02
	Au oz/t					
*9639	.001					
*9640	.001					

CLEAR LAKE PROJECT

DIAMOND DRILL RECORD

Hole Number <u>79-19</u>	Azimuth <u>266°</u>	Dip <u>-60°</u>	Elevation <u>2338.2'</u>	Core Size <u>NQ, BQ</u>	Hole Objective _____
Northing <u>6961326.00</u>	Easting <u>491959.48</u>		Picket Line Coordinates _____		
Started <u>24/06/79</u>	Completed <u>29/06/79</u>	Logged By <u>G. NORMAN (1983)</u>			
Length <u>805'</u>	Contractor <u>HEATH & SHERWOOD</u>	Core Stored <u>ON SITE</u>	Claim <u>SUE 2012/3004F</u>		

GRAPHIC LOG	LOCATION SURVEY DATA	GENERAL COMMENTS
Scale (ft.) <u>1" = 10'</u>	Method _____ Points _____	_____

Scale (ft.) <u>1" = 10'</u>	Lithology	Mineralization	Alteration	Bedding Z's	Shears, fract.	CORE QUALITY				ASSAYS							
						FOOTAGE RUNS			% Core Recov.	FOOTAGE				% Zn	% Pb	Oz/T Ag	Average Grades
						From	To	Length		From	To	Length	Tag No.				

Scale (ft.)	Lithology	Mineralization	Alteration	Bedding Z's	Shears, fract.	DESCRIPTIVE LOG											
0						0-15' OVERBURDEN											
10						15-90' ARGILLITE (2b)											
20	2b					Well laminated argillite with minor graphitic partings. Interlayered silty and clay rich layers.											
30			qtz carb			15'-99' Quartz-carbonate veining prevalent											
40	2b																

CLEAR LAKE PROJECT

DIAMOND DRILL RECORD

Hole Number 79-19

Logged By G. NORMAN (1983)

GRAPHIC LOG					LOCATION SURVEY DATA		GENERAL COMMENTS												
Scale	Lithology	Mineralization	Alteration	Bedding \angle 's	Shears, fract.	Method	Points	CORE QUALITY			ASSAYS								
								FOOTAGE RUNS		% Core Recov.	FOOTAGE			% Zn	% Pb	Oz/T Ag	Average Grades		
DESCRIPTIVE LOG								From	To		Length	From	To					Length	Tag No.
<u>ARGILLITE (2b)</u> Cont'd																			
40	2b		qtz carb	80°		44'-48' Fault Zone - sheared and brecciated with quartz-carbonate stringers in a graphitic matrix.													
50						50'-90' Argillite is massive to partly laminated with minor graphitic partings.													
60	2b		qtz carb	40° 90°		60'-67' Quartz-carbonate stringers.													
70				0°															
80			qtz carb	10° 15°		75'-97' Quartz-carbonate stringers.													
90	2b			20°															

CLEAR LAKE PROJECT

DIAMOND DRILL RECORD

Hole Number 79-19

Logged By G. NORMAN (1983)

GRAPHIC LOG						LOCATION SURVEY DATA				GENERAL COMMENTS									
Scale	Lithology	Mineralization	Alteration	Bedding \angle 's	Shears, fract.	Method Points				CORE QUALITY			ASSAYS						
										FOOTAGE RUNS		% Core Recov.	FOOTAGE			% Zn	% Pb	Oz/T Ag	Average Grades
DESCRIPTIVE LOG						From	To	Length				From	To	Length	Tag No.				
90	2c		qtz carb			90'-173.5' ARGILLITE (2c) Interlayered grey-black argillite with grey-maroon bands of silt-sand sized particles. Sandy layers common, and vary from $\frac{1}{2}$ " to ~5' in thickness - but are predominantly $\frac{1}{2}$ " to 1" thick.													
100																			
110			qtz carb			112'-114' Fault zone - brecciated with quartz-carbonate stringers in a graphitic matrix.													
120																			
130			qtz carb			125'-130.5' Massive, grey sandy layer. Contact at 30° to C.A.													
140	2c		py sid			135'-137' Massive, grey siltstone layer. 1" x $\frac{1}{2}$ " pyrite clast occurs 2" above lower contact, and is cut by siderite veinlets. Lower contact at 30° to C.A.													

CLEAR LAKE PROJECT

DIAMOND DRILL RECORD

Hole Number 79-19

Logged By G. NORMAN (1983)

GRAPHIC LOG

LOCATION SURVEY DATA

GENERAL COMMENTS

Method _____
Points _____

Scale	Lithology	Mineralization	Alteration	Bedding \angle 's	Shears, fract.
-------	-----------	----------------	------------	---------------------	----------------

DESCRIPTIVE LOG

CORE QUALITY

ASSAYS

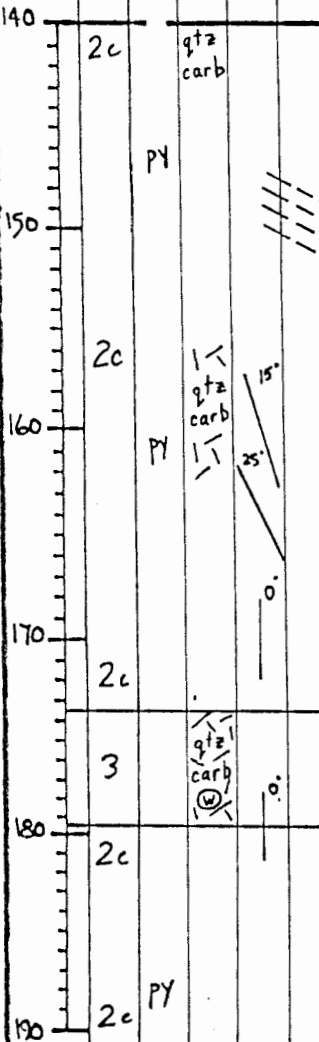
FOOTAGE RUNS			% Core Recov.	FOOTAGE			% Zn	% Pb	Oz/T Ag	Average Grades
From	To	Length		From	To	Length				

ARGILLITE (2c) Cont'd.

145'-171.9' Generally massive siltstone with minor interbedded argillite, however at 152.6-170', argillite is the dominant rock type. Local pyrite blebs up to $\frac{1}{4}$ " in diameter.

173.5'-179.5' BRECCIA/CONGLOMERATE (3)
Clasts/fragments of predominantly chert with siltstone and argillite, in a matrix of silt/clay. Fragments/clasts are subangular to subrounded; smaller clasts tend to be angular-subangular and larger clasts (up to 2") tend to be subrounded. Minor quartz-carbonate stringers present.

179.5'-193' ARGILLITE (2c)
Predominantly massive black argillite with minor sandy bands. A few rounded white blebs



CLEAR LAKE PROJECT

DIAMOND DRILL RECORD

Hole Number 79-19

Logged By G. NORMAN (1983)

GRAPHIC LOG

LOCATION SURVEY DATA

GENERAL COMMENTS

Method _____
Points _____

Scale
Lithology
Mineralization
Alteration
Bedding \angle 's
Shears, fract.

CORE QUALITY

ASSAYS

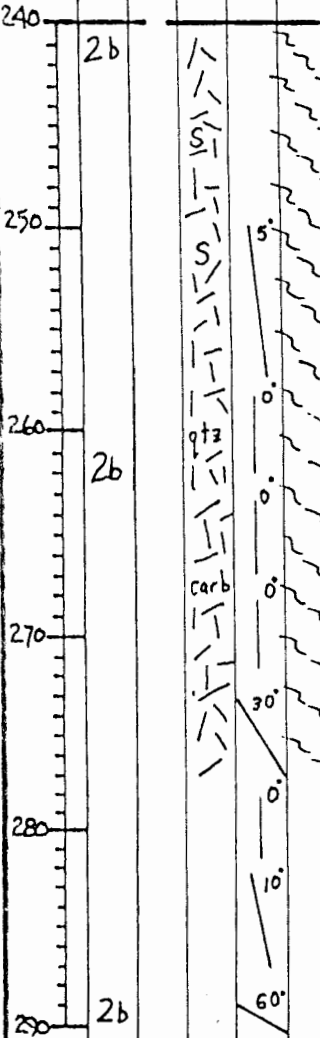
FOOTAGE RUNS			% Core Recov.
From	To	Length	

FOOTAGE				% Zn	% Pb	Oz/T Ag	Average Grades
From	To	Length	Tag No.				

DESCRIPTIVE LOG

ARGILLITE (2b) Cont'd.

241'-255' Partially silicified.



CLEAR LAKE PROJECT

DIAMOND DRILL RECORD

Hole Number 79-19

Logged By G. NORMAN (1983)

GRAPHIC LOG						LOCATION SURVEY DATA		GENERAL COMMENTS										
Scale (Ft) 1"=10'	Lithology	Mineralization	Alteration	Bedding \angle 's	Shears, fract.	Method	Points	CORE QUALITY			ASSAYS							
						FOOTAGE RUNS			% Core Recov.	FOOTAGE				% Zn	% Pb	Oz/T Ag	Average Grades	
DESCRIPTIVE LOG						From	To	Length		From	To	Length	Tag No.					
390	2a	Py		0'														
	5	Py		25'														
400	A																	
410		gal sph py sph																
420	A	py sph gal																
430		py																
440	A																	

ARGILLITE (2a)/LAPILLI TUFF (5) Cont'd.
 coating lamellae in argillite. Weak pyrite stockwork. Tuffaceous sections occur at 389.0'-389.5', 390.5'-391' and 398.6'-399.4'

400'-488' MASSIVE SULPHIDE (A).

400'-430' Visible sphalerite and galena in pyrite. Massive galena to small disseminated cubes of galena. Sphalerite in large irregular masses of small reddish-yellowish brown crystals. Minor quartz veining.

406'-409' 10%-12% estimated combined Pb-Zn.

409'-410' Banded pyrite with minor sphalerite

412'-415' More quartz rich pyrite with minor sphalerite and galena. Graphic texture of pyrite intruding grain boundaries of sphalerite implies 2nd or 3rd generation pyrite.

420'-430' Sphalerite and galena

From	To	Length	Tag No.	% Zn	% Pb	Oz/T Ag	Average Grades
392	399	7	9041	.21	.09		From 392' To 758' (366')
399	405	6	9042	4.80	1.07	.40	Zn 4.40% Pb 0.82%
405	410	5	9043	8.05	2.15	.78	From 405' To 425' (20')
410	415	5	9044	6.00	1.26	.71	Zn 6.45% Pb 1.76% Ag 0.79oz/t
415	420	5	9045	6.70	1.75	.88	
420	425	5	9046	5.05	1.89	.79	
425	430	5	9047	4.15	1.63	.70	
430	435	5	9048	4.85	1.23	.72	
435	440	10	9049	1.81	.45		

CLEAR LAKE PROJECT

DIAMOND DRILL RECORD

Hole Number 79-19

Logged By G. NORMAN (1983)

GRAPHIC LOG LOCATION SURVEY DATA GENERAL COMMENTS

Scale (Ft) 1" to 10'
Lithology
Mineralization
Alteration
Bedding L's
Shears, fract.

Method TROPARI
Points Depth Dip Bearing
450' -52' 250°

CORE QUALITY ASSAYS
FOOTAGE RUNS %
From To Length Core Recov.
FOOTAGE % % Oz/T Average
From To Length Tag No. Zn Pb Ag Grades

440
A
450
A
460
470
480
A
490
4
sid

DESCRIPTIVE LOG
MASSIVE SULPHIDE (A) Cont'd.
decreasing in grain size and abundance.
430'-488' Brecciated pyrite with minor
chert fragments. Pyrite stringers into
chert fragments. No visible sphalerite
or galena.

474'-474.3' Pyritic mud gouge (fault).

488'-498' CHERT (4)
Small fracture zones with carbonate (siderite)
and pyrite infillings.

From	To	Length	% Core Recov.	From	To	Length	Tag No.	% Zn	% Pb	Oz/T Ag	Average Grades
				See Previous Page							
				445	455	10	9050	3.80	.83		
				455	465	10	9051	.94	.28		
				465	471	6	9052	.77	.30		
				471	480	9	9053	.68	.17		
				480	488	8	9054	1.11	.39		
				See Following Page							

CLEAR LAKE PROJECT

DIAMOND DRILL RECORD

Hole Number 79-19

Logged By G. NORMAN (1983)

GRAPHIC LOG						LOCATION SURVEY DATA				GENERAL COMMENTS									
Scale (Ft) 1" = 10'	Lithology	Mineralization	Alteration	Bedding L's	Shears, fract.	Method Points				CORE QUALITY				ASSAYS					
						DESCRIPTIVE LOG				FOOTAGE RUNS			% Core Recov.	FOOTAGE			% Zn	% Pb	Oz/T Ag
				From	To	Length	From	To	Length	Tag No.									
540	A					MASSIVE SULPHIDE (A) Cont'd.													
													See Previous Page						
550		sph gal				555'-572' Sphalerite and galena up to 10% in some 3-4' sections; pyrite shows concentric zoning and minor banding. Carbonate and chert fragments present.							542	552	10	9064	.57	.29	.22
													552	555	3	9065	1.08	.38	.32
560	A												555	560	5	9066	3.25	1.71	.36
		sph gal											560	565	5	9067	3.30	1.16	.16
570						572'-579' Vuggy, botryoidal pyrite with abundant calcite.							565	572	7	9068	3.15	1.67	.31
		py py				572'-588' Contains up to 20% black, angular chert fragments.							572	582	10	9069	1.75	.24	.17
580													582	588	6	9070	2.49	.55	.26
590	A												See Following Page						

CLEAR LAKE PROJECT

DIAMOND DRILL RECORD

Hole Number 79-19

Logged By G. NORMAN (1983)

GRAPHIC LOG

Scale (Ft) 1" = 10'	Lithology	Mineralization	Alteration	Bedding L's	Shears, fract.
------------------------	-----------	----------------	------------	-------------	----------------

LOCATION SURVEY DATA

Method _____

Points _____

GENERAL COMMENTS _____

590	A				
600					
610	A	sph sph gal			
620		PY			
630		PY			
640	A				

DESCRIPTIVE LOG

MASSIVE SULPHIDE (A) Cont'd.

594'-596' Contains 50%⁽⁺⁾ black chert.

612'-618' Abundant sphalerite with minor galena.

617'-630' Laminated and botryoidal pyrite with up to 10% wispy chert (coprecipitate).

CORE QUALITY				ASSAYS						
FOOTAGE RUNS			% Core Recov.	FOOTAGE			% Zn	% Pb	Oz/T Ag	Average Grades
From	To	Length		From	To	Length				
				588	593	5	9071	3.05	.82	.33
				593	600	7	9072	2.08	.61	.22
				600	605	5	9073	1.66	.29	.30
				605	612	7	9074	1.60	.32	.28
				612	618	6	9075	7.83	.18	1.13
				618	625	7	9076	.90	.14	.30
				625	630	5	9077	3.35	.18	.57
				630	635	5	9078	2.90	.16	.30
				635	645	10	9079	4.43	.55	.55

CLEAR LAKE PROJECT

DIAMOND DRILL RECORD

Hole Number 79-19

Logged By G. NORMAN (1983)

GRAPHIC LOG

Scale (Ft) 1" = 10'	Lithology	Mineralization	Alteration	Bedding L's	Shears, fract.
------------------------	-----------	----------------	------------	-------------	----------------

LOCATION SURVEY DATA

Method _____
Points _____

GENERAL COMMENTS

640	A				
650		PY			carb
660	A				
670		PY			carb
680					
690	A	PY			

DESCRIPTIVE LOG

MASSIVE SULPHIDE (A) Cont'd.

646'-692' Massive pyrite with minor brecciation and carbonate veining.

CORE QUALITY				ASSAYS						
FOOTAGE RUNS			% Core Recov.	FOOTAGE			% Zn	% Pb	% Ag	Average Grades
From	To	Length		From	To	Length				
										See Previous Page
				645	650.5	5.5	9080	5.95	.61	.68
				650.5	655	4.5	9081	2.78	.37	.29
				655	659.5	4.5	9082	.19	.10	.09
				659.5	667	7.5	9083	2.40	.36	.08
				667	677	10	9084	2.20	.37	.25
				677	686	9	9085	5.98	.82	.68
				686	690	4	9086	9.75	.88	.52

From 677'
To 725'
(48')
Zn 16.05%
Pb 1.91%
Ag 1.66%

CLEAR LAKE PROJECT

DIAMOND DRILL RECORD

Hole Number 79-19

Logged By G. NORMAN (1983)

GRAPHIC LOG

LOCATION SURVEY DATA

GENERAL COMMENTS

Scale (Ft) 1" = 10'	Lithology	Mineralization	Alteration	Bedding \angle 's	Shears, fract.
------------------------	-----------	----------------	------------	---------------------	----------------

Method	Points
--------	--------

CORE QUALITY

ASSAYS

690	A				
700					
710	A				
720					
730					
740	A				

DESCRIPTIVE LOG

MASSIVE SULPHIDE (A) Cont'd.

690'-725' Higher grade section with up to 20% light to dark brown sphalerite in a fine grained pyrite matrix. Higher grade areas appear to be associated with more siliceous (cherty) sections.

727'-727.5' Black chert band with minor sulphide stringers

731.5' Black chert.

737'-758' Pyrite/black chert - chert appears to be a coprecipitate with pyrite.

FOOTAGE RUNS			% Core Recov.
From	To	Length	

FOOTAGE				% Zn	% Pb	Oz/T Ag	Average Grades
From	To	Length	Tag No.				

FOOTAGE RUNS			% Core Recov.	FOOTAGE				% Zn	% Pb	Oz/T Ag	Average Grades
From	To	Length		From	To	Length	Tag No.				
	690	695	5		9087	19.00	1.99	1.87			
	695	700	5		9088	24.35	2.44	2.77			
	700	705	5		9089	16.20	2.92	1.87			
	705	710	5		9090	16.10	2.00	1.14			
	710	715	5		9091	17.50	2.36	2.29			
	715	720	5		9092	29.00	2.25	2.16			
	720	725	5		9093	13.40	2.18	2.21			
	725	730	5		9094	1.20	0.57				
	730	740	10		9095	.08	.06				

CLEAR LAKE PROJECT

DIAMOND DRILL RECORD

Hole Number 79-19

Logged By G. NORMAN (1983)

GRAPHIC LOG						LOCATION SURVEY DATA				GENERAL COMMENTS											
Scale (Ft) 1" = 10'	Lithology	Mineralization	Alteration	Bedding \angle 's	Shears, fract.	Method		Points		CORE QUALITY				ASSAYS							
						From	To	Length	% Core Recov.	From	To	Length	Tag No.	% Zn	% Pb	Oz/T Ag	Average Grades				
DESCRIPTIVE LOG																					
740	A					<u>MASSIVE SULPHIDE (A) Cont'd.</u>								740	745	5	9096	.04	.02		
750				90'		747'-748.6' Black fissile argillite; contact with sulphides is perpendicular to C.A.								745	754	9	9097	.07	.05		
760	A					<u>758'-805' CHERT (4)</u>								754	758	4	9098	.07	.04		Au oz/t
	4					Grey to light grey stylolitic chert: stylolites at 30' to C.A. Minor sulphides in stringers and fractures.								759	769	10	9639	.01	.01	.01	.001
770	4													769	779	10	9640	.01	.02	.02	.001
780						779.6'-780.6' Massive sulphides - vuggy; containing gypsum.															
790	4					780.6'-805' Pyrite stringers/stockwork to 5% of rock. Vuggy quartz and calcite															

gyp
 qtz
 carb

CLEAR LAKE PROJECT

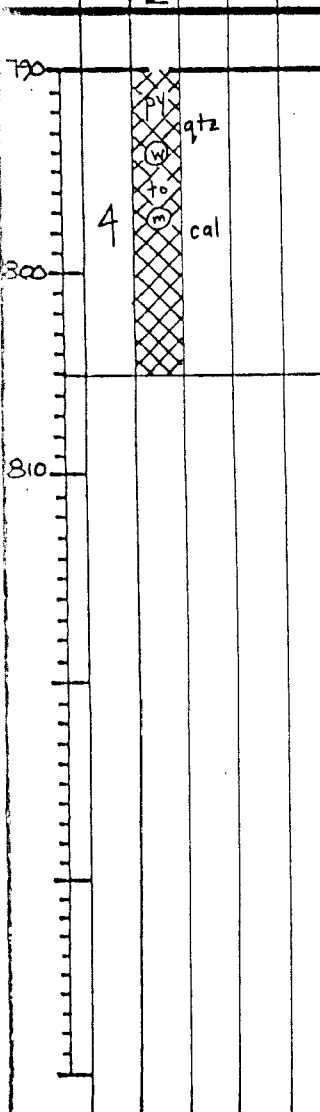
DIAMOND DRILL RECORD

Hole Number 79-19

Logged By G. NORMAN (1983)

GRAPHIC LOG

Scale (Ft)
1" to 10'
Lithology
Mineralization
Alteration
Bedding L's
Shears, fract.



LOCATION SURVEY DATA

Method TROPARI
Points Depth Dip Bearing
800' -57° 250°

DESCRIPTIVE LOG

CHERT (4) Cont'd.

805' END OF HOLE.

GENERAL COMMENTS

CORE QUALITY

FOOTAGE RUNS
From To Length % Core Recov.

ASSAYS

FOOTAGE
From To Length Tag No. % Zn % Pb % Ag Average Grades

DIAMOND DRILL SUMMARY LOG

Property CLEAR LAKE Property No. 5002 Hole Number 83-39

Coordinates : 6 961 455N 492 140E Commenced Drilling : Aug 23, 1983

Collar Elevation : 2268' Completed Drilling : Sept 7, 1983

Bearing at Collar : 266° Total Depth : 1772'

Dip at Collar : -55° Logged By : G. Norman Sept, '83

Core Size / Method : NA wire line Claim : Sue 613

Drilling Contractor : E. Caron Diamond Drilling Ltd

<u>SURVEY SUMMARY</u>				<u>PERTINENT ASSAY DATA</u>			<u>PERTINENT GEOLOGY</u>		
Depth	Dip	Bearing	Method	Interval	Zn %	Pb %	Ag oz/t	Interval	Rock Type
collar	-55°	266°		942' - 1,047'	0.01	0.01	0.02	0 - 35'	Overburden
117'	-56°	276°	S.S.*					35' - 97.5'	Argillite (2a)
147'	-56°	274.5°	S.S.					97.5' - 282.5'	Argillite (2e)
187'	-56°	274.5°	S.S.					282.5' - 307.5'	Felsite (KTF)
397'	-56.5°	274°	S.S.					307.5' - 361'	Argillite (2e)
597'	-57°	270°	S.S.					361' - 367'	Argillite (2c)
817'	-57.5°	269.5°	S.S.					367' - 419'	Sandstone (1a)
907'	-58.5°	276°	S.S.					419' - 592'	Sandstone (1b)
1007'	-59.5°	278°	S.S.						Short sections with
1286'	-59°	278.5°	S.S.						sph in qtz sid vms in
1523'	-57°	277.5°	S.S.						above 2 units (1%)
1713'	-57°	271°	S.S.					592' - 620'	Argillite (2c)

DIAMOND DRILL - SUMMARY LOG

 Property CLEAR LAKE

 Property No. 5002

 Hole Number 83-39

<u>SURVEY SUMMARY</u>				<u>PERTINENT ASSAY DATA</u>	<u>PERTINENT GEOLOGY</u>	
Depth	Dip	Bearing	Method	Interval	Interval	Rock Type
* Sperry Sun			magnetic		620' - 633.5'	Breccia/Conglomerate (3)
single shot.						with strong py-gtz.
						stockwork and minor
						sph.
					633.5' - 666'	Argillite (2c)
					666' - 681.5'	Argillite (2b) with
						fossiliferous bed.
					681.5' - 683'	Breccia/Conglomerate (3)
					683' - 716.5'	Argillite (2c)
					716.5' - 766'	Argillite (2c)
					766' - 789'	Argillite (2c)
						780' - 789' argillite is becoming
						baritic.
					789' - 794.8'	Barite (D)
					794.8' - 810'	Argillite (2a)
					810' - 818'	Barite (D)
					818' - 942'	Chert/Tuff (4/6)
						915.5' - 942' becoming baritic
					942' - 954'	Barite (D) some
						pyrite laminations
					954' - 961'	Chert/Tuff (4/6)
					961' - 1,049'	Barite (D) some

DIAMOND DRILL SUMMARY LOG

Property CLEAR LAKE

Property No. 5002

Hole Number 83-39

<u>SURVEY SUMMARY</u>				<u>PERTINENT ASSAY DATA</u>	<u>PERTINENT GEOLOGY</u>	
Depth	Dip	Bearing	Method	Interval	Interval	Rock Type
						pyrite laminations with 2 zones with pyrite up to 60% at 1,001'-1,004' and 1,027'-1,036'.
					1,049'-1,070'	Chert (4) /t. gray.
					1,070'-1,318'	Chert (4) with thin Tuff bands (6)
					1,318'-1,377'	Chert (4)
					1,318'-1,328'	brecciated chert
					1,328'-1,377'	black graphitic chert with sphalerite from 1,349'-1,377' as fine disseminations with gtz-sid. veins and 2 thin bands at 1,371.5' : 1mm and 3mm thick. Also weak pyrite stringers.
					1,377'-1,446.5'	Cherty Tuff (6a) /t. gray, massive, fine grained tuff with

DIAMOND DRILL - SUMMARY LOG

 Property CLEAR LAKE

 Property No. 5002

 Hole Number 83-39

<u>SURVEY SUMMARY</u>				<u>PERTINENT ASSAY DATA</u>	<u>PERTINENT GEOLOGY</u>	
Depth	Dip	Bearing	Method	Interval	Interval	Rock Type
						euhedral pyrite;
						minor chert fragments
					1446.5'-1460'	Laminated Cherty Tuff (6b)
						lt. green, fine-grained
						rock with euhedral
						pyrite and siderite
						bands.
					1460'-1478'	Tuff (6a)
					1478'-1512'	Tuff (6b)
					1512'-1571'	Chert (4)
					1512'-1541'	gray chert.
					1541'-1565'	lt. green to
						pinkish chert.
					1565'-1571'	gray chert
					1571'-1772'	Argillite (2b)
						black, soft,
						carbonaceous argillite.
						Minor traces of sphal.
						at 1692.3'; 1726.5' w/
						qtz-sid veins; odd py
						stringer; graded beds

ASSAY DATA

DDH 83-39

SAMPLE NUMBER	FOOTAGE			ASSAYS		
	From	To	Length	Zn%	Pb%	Ag oz/t
009643	386	390.5	4.5	.20	.01	.01
009644	405	415	10.0	.01	.01	.01
009645	480	490	10.0	.05	.01	.01
009646	490	500	10.0	.04	.01	.01
009647	500	510	10.0	.01	.01	.01
009648	510	520	10.0	.01	.01	.01
009649	530	540	10.0	.01	.01	.01
009650	540	550	10.0	.02	.01	.01
009651	550	560	10.0	.01	.01	.01
009652	560	570	10.0	.01	.01	.01
009653	570	580	10.0	.01	.01	.01
009654	580	588	8.0	.02	.01	.01
009655	588	590	2.0	.17	.01	.01
009656	620	625	5.0	.07	.01	.01
009657	625	633.5	8.5	.05	.03	.02
009682	789	794.8	5.8	.01	.01	.01
009683	810	818	8.0	.01	.01	.01
009684	942	952	10.0	.01	.01	.02
009685	952	961	9.0	.01	.01	.01
009686	961	971	10.0	.02	.01	.01
009687	971	977	6.0	.01	.01	.01
009688	977	979.8	2.5	.01	.01	.04
009689	979.8	985	5.5	.01	.01	.01
009690	985	990	5.0	.01	.01	.01
009691	990	995.5	5.5	.01	.01	.01
009692	995.5	1001.0	5.5	.01	.01	.01
009693	1001	1005	4.0	.01	.01	.03
009694	1005	1015.5	10.5	.01	.01	.01
009695	1015.5	1021	5.5	.01	.01	.01
009696	1021	1027	6.0	.01	.01	.01
009697	1027	1032	5.0	.01	.01	.04
009698	1032	1040	8.0	.02	.01	.01
009699	1040	1043	3.0	.04	.04	.11
009700	1043	1047	4.0	.01	.01	.01

GEOCHEMICAL RESULTS

DDH 83-39

SAMPLE NUMBER	FOOTAGE			GEOCHEM		
	From	To	Length	Zn ppm	Pb ppm	Ag ppm
009682	789	794.8	5.8	80	30	.2
009683	810	818	8.0	13	16	.3
009684	942	952	10.0	68	20	.4
009685	952	961	9.0	25	15	.1
009686	961	971	10.0	152	14	.2
009687	971	977	6.0	34	11	.2
009688	977	979.8	2.5	32	58	1.3
009689	979.8	985	5.5	16	19	.4
009690	985	990	5.0	19	16	.3
009691	990	995.5	5.5	21	19	.4
009692	995.5	1001.0	5.5	29	22	.4
009693	1001	1005	4.0	11	40	.8
009694	1005	1015.5	10.5	8	4	.1
009695	1015.5	1021	5.5	5	6	.1
009696	1021	1027	6.0	8	12	.2
009697	1027	1032	5.0	16	47	1.4
009698	1032	1040	8.0	170	27	.6
009699	1040	1043	3.0	290	132	3.6
009700	1043	1047	4.0	10	23	.3

CLEAR LAKE PROJECT

DIAMOND DRILL RECORD

Hole Number 83-39 Azimuth 266° Dip -55° Elevation 2268' Core Size NQ
 Northing 6961455 Easting 492140 Picket Line Coordinates _____
 Started August 23, 1983 Completed Sept. 7, 1983 Logged By G. NORMAN
 Length 1772' Contractor Caron Drilling Core Stored AT SITE Claim Sue 613

Hole Objective To test the down dip extension of the sulphides intersected in hole 82-39.

GRAPHIC LOG					LOCATION SURVEY DATA				GENERAL COMMENTS										
Scale (ft) 1" = 10'	Lithology	Mineralization	Alteration	Bedding \angle 's	Shears, fract.	Method Points				CORE QUALITY			ASSAYS						
						Method Points				FOOTAGE RUNS		% Core Recov.	FOOTAGE			% Zn	% Pb	Oz/T Ag	Average Grades
DESCRIPTIVE LOG						From	To	Length	From	To	Length		Tag No.						
0-35' <u>OVERBURDEN</u>																			
35'-97.5' <u>ARGILLITE (2a)</u>																			
Black carbonaceous massive mod. siliceous argillite with a fine mod. qtz-sid stockwork, minor stringers & desim. of pyrite. Mod. graphite on fractures & shear planes.																			

CLEAR LAKE PROJECT

DIAMOND DRILL RECORD

Hole Number 83-39

Logged By G. NORMAN

GRAPHIC LOG					LOCATION SURVEY DATA				GENERAL COMMENTS															
Scale	Lithology	Mineralization	Alteration	Bedding L's	Shears, fract.	Method	Points	CORE QUALITY				ASSAYS												
								FOOTAGE RUNS			% Core Recov.	% R.Q.D.	FOOTAGE			% Zn	% Pb	Oz/T Ag	Average Grades					
DESCRIPTIVE LOG								From	To	Length			From	To	Length	Tag No.								
ARGILLITE (2a) Cont'd																								
40	2a					35'-49' Only 22" of gravelly quartz-siderite veining material																		
8		qtz sid				66'-92' strong graphite on fracture, moderate to strong quartz-siderite stockwork								49	53	4	50							
						49'-61' Fault gouge & broken crumbly rock																		
						52.5'-53' quartz-siderite vein								53	61	8	8							
60	2a					Gouge Zones 49'-52.5' 53'-61'								61	66	5	10							
		qtz sid				72' Quartz-siderite vein 1/2" at 45° parallels fracture								66	69	3	89							
70		qtz sid				73' 1' minor pyrite band								69	75	6	85	22						
		Py				77' Pyrite stringer								75	77	2	100							
80		Py												77	80	3	82							
		Py												80	84	4	82	22						
		qtz sid												84	89	5	49							
8	2a					89' Fault (small) 2" gouge								89	90	1	100							

CLEAR LAKE PROJECT

DIAMOND DRILL RECORD

Hole Number 83-39

Logged By G. NORMAN

GRAPHIC LOG					
Scale	Lithology	Mineralization	Alteration	Bedding L's	Shears, fract.
190	Ze				
200		py			
210					
220	Ze	py	cal		
230					
240	Ze				

LOCATION SURVEY DATA

Method _____
 Points _____

DESCRIPTIVE LOG

ARGILLITE (2e)

194.5' fine euhedral pyrite, calcareous
 196'-230' non-calcareous black laminated argillite with weak calcite veining (minor pyrite) weakly fractured, some fractures with graphite
 221' .4" laminated pyrite band, which is somewhat contorted

228' 1mm white limestone band at 25° to C.A.

236.5' 1" white limestone band at 10°

GENERAL COMMENTS

CORE QUALITY

FOOTAGE RUNS			% Core Recov.	% R.Q.D.
From	To	Length		
189.5	199	9.5	95	47
199	205	6	92	25
205	215	10	98	53
215	225	10	100	57
225	230	5	100	77
230	234.5	4.5	74	30
234.5	236.5	2	83	
236.5	244	7.5	78	26

ASSAYS

FOOTAGE				% Zn	% Pb	% Ag	Oz/T	Average Grades
From	To	Length	Tag No.					

CLEAR LAKE PROJECT

DIAMOND DRILL RECORD

Hole Number 83-39

Logged By G. NORMAN

GRAPHIC LOG

LOCATION SURVEY DATA

GENERAL COMMENTS

Method _____
Points _____

CORE QUALITY

ASSAYS

Scale
Lithology
Mineralization
Alteration
Bedding L's
Shears, fract.

FOOTAGE RUNS			% Core Recov.	% P.G.D.	FOOTAGE				% Zn	% Pb	Oz/T Ag	Average Grades
From	To	Length			From	To	Length	Tag No.				

DESCRIPTIVE LOG

ARGILLITE (2e)

230'-267.5' Non-calcareous-weakly calcareous, moderately to strongly sheared argillite with minor limestone bands and moderate to strong calcite veining

239'-244' Shear zone with strong graphite on shear planes and a strong calcite veining

249' 1/2" white limestone band at 50° to C.A.

260'-267.5' Shear zone with strong graphite on shear planes moderate to strong calcite veining

268'-269' Slight calcareous massive bedded with very strong calcite stockworks.

273'-282.5' Moderately sheared argillite at 40°-50°

279' .3" thick broken pyrite band

280' 6" calcite vein

FELSITE

Lt. green mod. hard rock, mod-wkly fractured, containing 15% mod. green feldspar phenocrysts, 5% mafic specks contained in a lt. green matrix. Minor specks of desim. pyrite cut by weak quartz-calcite siderite

			See Previous Page									
244	245	1	100									
245	249	4	88	8								
249	252.5	3.5	67									
252.5	257	4.5	89	17								
257	260	3	78	14								
260	265.5	5.5	79	15								
265.5	268	2.5	83									
268	276.5	8.5	94	64								
276.5	284	7.5	89	28								
284	294.5	10.5	97	44								

CLEAR LAKE PROJECT

DIAMOND DRILL RECORD

Hole Number 83-39

Logged By G. NORMAN

GRAPHIC LOG

LOCATION SURVEY DATA

GENERAL COMMENTS

Method _____
Points _____

Scale
Lithology
Mineralization
Alteration
Bedding L's
Shears, fract.

DESCRIPTIVE LOG

CORE QUALITY

ASSAYS

FOOTAGE RUNS

FOOTAGE

From	To	Length	% Core Recov.	% R.Q.D.	From	To	Length	Tag No.	% Zn	% Pb	Oz/T Ag	Average Grades
------	----	--------	---------------	----------	------	----	--------	---------	------	------	---------	----------------

FELSITE Cont'd

Upper contact at 60°, lower contact at 80°
with some qtz vms weakly sheared

See Previous Page

294.5	304	9.5	100	21								
-------	-----	-----	-----	----	--	--	--	--	--	--	--	--

304	311.5	7.5	94	11								
-----	-------	-----	----	----	--	--	--	--	--	--	--	--

311.5	317.5	6.5	97	14								
-------	-------	-----	----	----	--	--	--	--	--	--	--	--

317.5	323	5.5	94	14								
-------	-----	-----	----	----	--	--	--	--	--	--	--	--

323	325	2	77									
-----	-----	---	----	--	--	--	--	--	--	--	--	--

325	329.5	4.5	74									
-----	-------	-----	----	--	--	--	--	--	--	--	--	--

329.5	331	1.5	94	25								
-------	-----	-----	----	----	--	--	--	--	--	--	--	--

331	333.5	2.5	87	17								
-----	-------	-----	----	----	--	--	--	--	--	--	--	--

333.5	335	1.5	89									
-------	-----	-----	----	--	--	--	--	--	--	--	--	--

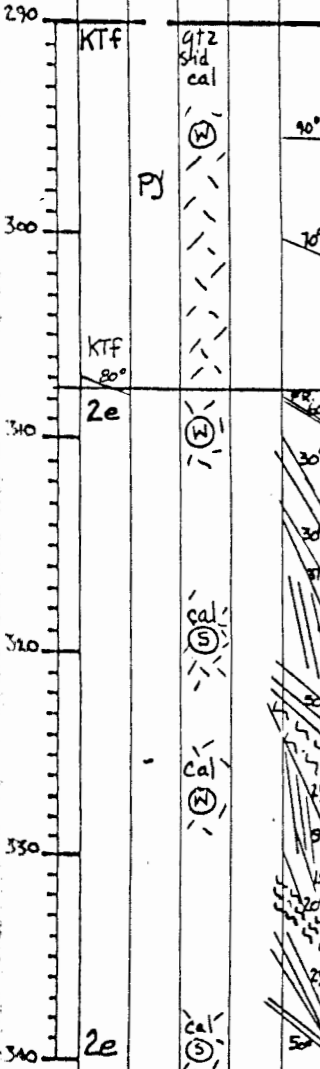
335	340.5	5.5	79									
-----	-------	-----	----	--	--	--	--	--	--	--	--	--

307.5'-361' ARGILLITE (2e)

Black carbonaceous argillite locally, weakly calc.
strongly sheared & faulted.

313'-360' Shear Fault Zone - strongly
graphitic zone,

Gouge Zones - 4" at 325', 334-335'
many shears at 20° to core axis



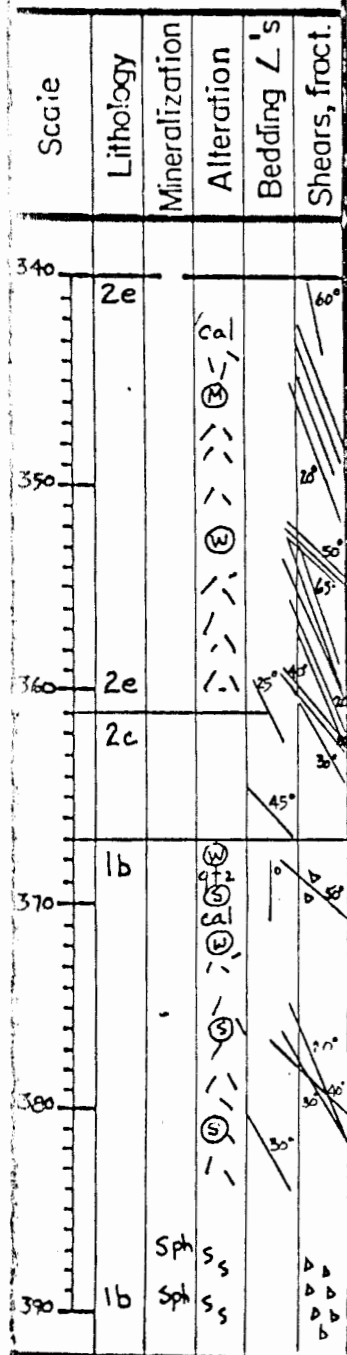
CLEAR LAKE PROJECT

DIAMOND DRILL RECORD

Hole Number 83-39

Logged By G. NORMAN

GRAPHIC LOG



LOCATION SURVEY DATA

Method _____
Points _____

GENERAL COMMENTS

CORE QUALITY

FOOTAGE RUNS			% Core Recov.	% R.Q.D.
From	To	Length		
340.5	342	1.5	50	
342	347.5	5.5	99	
347.5	349.5	2	67	
349.5	357	7.5	94	31
357	360	3	78	
360	366	6	83	
366	371	5	100	53
371	381	10	93	33
381	400	9	100	63

ASSAYS

FOOTAGE			Tag No.	% Zn	% Pb	Oz/T Ag	Average Grades
From	To	Length					
386	390.5	4.5	9643	.20	.01	.01	

DESCRIPTIVE LOG

ARGILLITE (2e) Cont'd

361'-367' ARGILLITE (2c)

Black argillite with very fine laminated sandstone beds

367'-419' SANDSTONE (1b)

Very fine-grained laminated sandstone with mod. to strong qtz-calc veining, odd pyrite band parallel to bedding.

386'-390.5' Fault Breccia

silicified zone with qtz. flooding & laminated sandstone fragments

Disseminated sphal. to 1%-2% #387'-390'

CLEAR LAKE PROJECT

DIAMOND DRILL RECORD

Hole Number 83-39

Logged By G. NORMAN

GRAPHIC LOG

LOCATION SURVEY DATA

Method Sperry Sun Magnetic Single Shot
 Points Depth Dip Bearing
397' -56.5° 274°

GENERAL COMMENTS

DESCRIPTIVE LOG

SANDSTONE (1a)

Dark grey massive qtz-rich sandstone (quartzite)
 ~80% qtz. grain with strong qtz-calc. stactwork.
 Short sections with brown sphal containing qtz veins
 and locally some dessimination

405' brown sphal. with qtz. veins. <1%

417.5'-418.5' Argillite

418.5'-419' Tuff? - white clay-rich fine-grained crumbly rock.

417' shear - 1" gouge

419'-592' SANDSTONE (1b)

419'-442' FAULT ZONE

419'-432' Shear Zone - shears at 50° to core axis

439'-442.5' Gouge

zones are strongly graphitic with brecciated

qtz-calc. veining (silicification), bedding contorted.

CORE QUALITY

FOOTAGE RUNS

From To Length

% Core Recov.

% R. Q. D.

ASSAYS

FOOTAGE

From To Length Tag No.

% Zn

% Pb

Oz/T Ag

Average Grades

See Previous Page

390 400 10 100 56

400 409 9 100 73

405 415 10 9644 .01 .01 .01

409 417 8 100 44

417 419 2 100

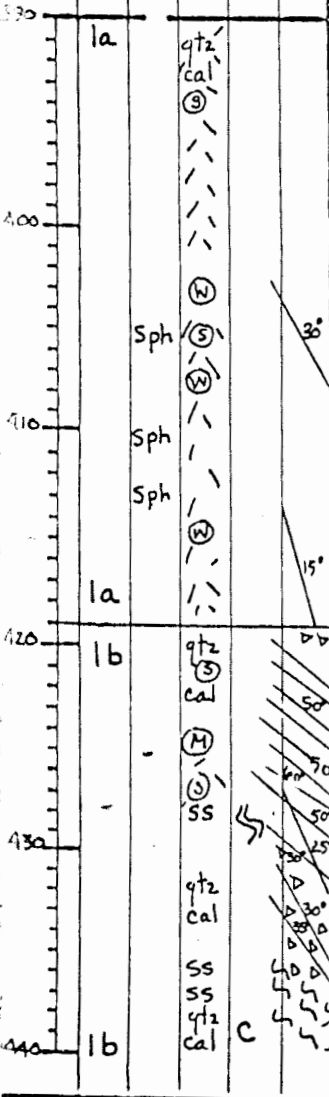
419 422.5 3.5 29

422.5 424 1.5 94

424 431 7 88

431 436.5 5.5 91 14

436.5 440.5 4 100 25



CLEAR LAKE PROJECT

DIAMOND DRILL RECORD

Hole Number 83-39

Logged By G. NORMAN

GRAPHIC LOG

Scale	Lithology	Mineralization	Alteration	Bedding \angle 's	Shears, fract.
140 150 160 170 180 190	lb lb Sph Sph Sph				

LOCATION SURVEY DATA

Method _____
 Points _____

DESCRIPTIVE LOG

SANDSTONE (lb) Cont'd

Light grey parallel laminated fine-grained sandstone. Cleavage is parallel to bedding plane & planes are graphitic. Average bedding angle with respect to core axis is approx. 40°-50° although small scale folding (amplitudes of 2"-3") are apparent throughout the section (tectonic or soft sediment deformation?). There is very weak quartz-siderite veining.

480'-493.5' weak qtz-sid stockwork with < 1% brown sphalerite

GENERAL COMMENTS

CORE QUALITY

FOOTAGE RUNS			% Core Recov.	% R.Q.D.
From	To	Length		

See Previous Page				
440.5	443	2.5	100	
443	453.6	10.5	98	54
453.5	463	9.5	100	27
463	473.5	10.5	100	60
473.5	481	7.5	100	47
481	491	10	97	72

ASSAYS

FOOTAGE				% Zn	% Pb	Oz/T Ag	Average Grades
From	To	Length	Tag No.				

480	490	10	9645	.05	.01	.01	
-----	-----	----	------	-----	-----	-----	--

CLEAR LAKE PROJECT

DIAMOND DRILL RECORD

Hole Number 83-39

Logged By G. NORMAN

GRAPHIC LOG

Scale	Lithology	Mineralization	Alteration	Bedding L's	Shears, fract.
190	lb	qtz sid			
500	sph				
510	sph				
520	sph				
530	sph				
540	lb				

LOCATION SURVEY DATA

Method _____
Points _____

DESCRIPTIVE LOG

SANDSTONE (lb) Cont'd

503.5' - 505.5' weak qtz-sid. stockwork with
< 1% brown sphalerite

521' - 525' brown sphal. with qtz-sid.
stockwork < 1%

533.5' - 535' Mod. to strong qtz-sid. stockwork
with 1%-2% brown sphalerite
Weakly sheared at 30° to core axis at 535'

GENERAL COMMENTS

CORE QUALITY

FOOTAGE RUNS

From To Length

% Core Recov.

% R.Q.D.

ASSAYS

FOOTAGE

From To Length Tag No.

% Zn

% Pb

Oz/T Ag

Average Grades

See Previous Page

491	498.5	7.5	92	56	490	500	10	9646	.04	.01	.01
-----	-------	-----	----	----	-----	-----	----	------	-----	-----	-----

498.5	508.5	10	100	48	500	510	10	9647	.01	.01	.01
-------	-------	----	-----	----	-----	-----	----	------	-----	-----	-----

508.5	517	8.5	100	28	510	520	10	9648	.01	.01	.01
-------	-----	-----	-----	----	-----	-----	----	------	-----	-----	-----

517	527	10	95	55							
-----	-----	----	----	----	--	--	--	--	--	--	--

527	537	10	100	74	530	540	10	9649	.01	.01	.01
-----	-----	----	-----	----	-----	-----	----	------	-----	-----	-----

See Following Page

CLEAR LAKE PROJECT

DIAMOND DRILL RECORD

Hole Number 83-39

Logged By G. NORMAN

Scale	Lithology	Mineralization	Alteration	Bedding \angle 's	Shears, fract.
540	lb	qtz sid		10°	
550	Sph			30°	
560	Sph Py			50°	
570	Sph Py	qtz sid		50°	
580	Sph Gal			50°	
590	lb	qtz sid		50°	

Method	Points

LOCATION SURVEY DATA

DESCRIPTIVE LOG
<u>SANDSTONE (lb) Cont'd</u>
546.5' - 548' Fault
1.5' gouge. Sheared at 30° to core axis.
551' sphal. with qtz-sid. < 1%
563.8' - 582' strong fine qtz-sid stockwork, rock crackled and filled with qtz-sid.
563.8' Crackled zone with fine strong qtz-sid stockwork fine pyrite & traces of sphal, sheared at 50° to core axis at 563.8'.
567' some bed slumpage - soft sediment deformation
570.5' - 573' Brecciated zone with angular qtz-sid vein fragments
574.8' pyrite bands parallel to sandstone bedding
581.1' 4" light grey siliceous rock with qtz-sid veins with sphal. Near down hole contact with sandstone qtz-sid vein containing sphal. & galena (< 1%).

GENERAL COMMENTS											
CORE QUALITY					ASSAYS						
FOOTAGE RUNS			% Core Recov.	% R.G.D.	FOOTAGE			% Zn	% Pb	Oz/T Ag	Average Grades
From	To	Length			From	To	Length	Tag No.			
537	547	10	97	28							
540	550	10	9650	.02 .01 .01							
547	551	4	63	9							
551	554	3	81	29							
554	557.5	3.5	88		550	560	10	9651	.01 .01 .01		
557.5	567	9.5	94	58							
560	570	10	9652	.01 .01 .01							
567	575	8	93	26							
570	580	10	9653	.01 .01 .01							
575	585	10	99	51							
580	588	10	9654	.02 .01 .01							
585	592	7	88	18	588	590	2	9655	.17 .01 .01		

CLEAR LAKE PROJECT

DIAMOND DRILL RECORD

Hole Number 83-39

Logged By G. NORMAN

GRAPHIC LOG

LOCATION SURVEY DATA

Method Sperry Sun Magnetic Single Shot
 Points Depth Dip Bearing
597' -57° 270°

GENERAL COMMENTS

DESCRIPTIVE LOG

SANDSTONE (1b) Con't

583'-592' Fault - Breccia zone; 583'-588' with minor disseminated and discontinuous bands of pyrite; brecciated quartz-siderite veins and sandstone fragments; Sediments with graphite. 588'-590' is massive sandstone bed with silicic stockwork, and disseminated orange sphalerite.

590'-592' - gouge

592'-620' ARGILLITE (2c)

Black argillite with many interbands of fine-grained laminated sandstone and 1'-2' massive fine-grained sandstone beds. Section is moderately to strongly sheared with graphite on shear planes. Moderate quartz-siderite veining ± carbonate to 611'. 611'-617' - strong quartz-siderite stockwork ± carbonate. 611'-620' - Weak-moderate pyrite stockwork. Traces of sphalerite at 611'; 3" pyrite band at 611.8'.

620-633.5 BRECCIA/CONGLOMERATE (3)

Fragments of sandstone, chert and argillite ranging from .1" to 6". Strong pyrite, moderate-strong quartz-siderite stockwork; 4% sphalerite.

CORE QUALITY

FOOTAGE RUNS

From To Length

% Core Recov. % R.Q.D.

ASSAYS

FOOTAGE

From To Length Tag No.

% Zn % Pb Oz/T Ag

Average Grades

See Previous Page

592 597.5 5.5 100 24

597.5 603 4.5 92

603 609 6 92

609 611 2 100 19

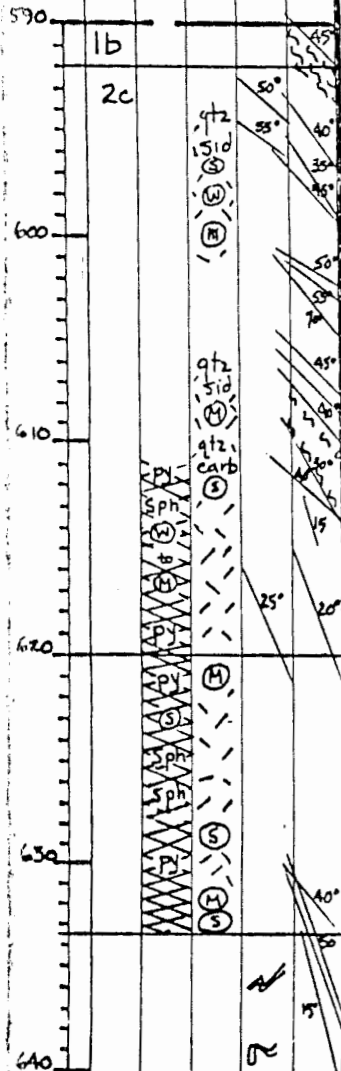
611 621 10 91 29

620 625 5 9656 .07 .01 .01

621 631 10 98 66

625 633.5 8.5 9657 .05 .03 .02

631 641 10 100 12



CLEAR LAKE PROJECT

DIAMOND DRILL RECORD

Hole Number 83-39

Logged By G. NORMAN

GRAPHIC LOG						LOCATION SURVEY DATA				GENERAL COMMENTS									
Scale	Lithology	Mineralization	Alteration	Bedding \angle 's	Shears, fract.	Method Points				CORE QUALITY			ASSAYS						
										FOOTAGE RUNS			FOOTAGE						
DESCRIPTIVE LOG						From	To	Length	% Core Recov.	% R.Q.D.	From	To	Length	Tag No.	% Zn	% Pb	Oz/T Ag	Average Grades	
40	Zc					633.5'-666' ARGILLITE (2c)													
						Black carbonaceous argillite with many laminated sandstone interbeds. Bedding disturbed due to shearing and faulting.													
						641'-650' Fault zone - gouge.													
						641' and 644'-647' strong graphite on shear planes.													
						649' - 1/2" pyrite nodule													
						651.5' - 5" quartz-siderite vein; bedding broken and contorted.													
						665.5 - 1/2" pyrite nodule													
50	Zc					666'-681.5 ARGILLITE (2b)													
						Black argillite with minor sandstone beds. Some broken beds floating irregularly in argillite matrix.													
						Fossil beds at 674.5 → 1" with silicified shell fragments. One whole crinoid with stems & brachiopod shells. Increasing fragmentation, argillite matrix to 681.5.													
						Limestone fragments at 680'													
						681.5'-683' BRECCIA/CONGLOMERATE (3)													
						Pyrite, argillite, chert, tuff, sandstone fragments in an argillaceous matrix. Fragments are angular-sub rounded, 1/2"													
60	Zc																		
70	Zc																		
80	Zc																		
90	Zc																		

CLEAR LAKE PROJECT

DIAMOND DRILL RECORD

Hole Number 83-39

Logged By G. NORMAN

GRAPHIC LOG

LOCATION SURVEY DATA

GENERAL COMMENTS

Method _____
Points _____

Scale
Lithology
Mineralization
Alteration
Bedding L's
Shears, fract.

DESCRIPTIVE LOG

CORE QUALITY

ASSAYS

FOOTAGE RUNS

%
Core
Recov.

%
R. Q. D.

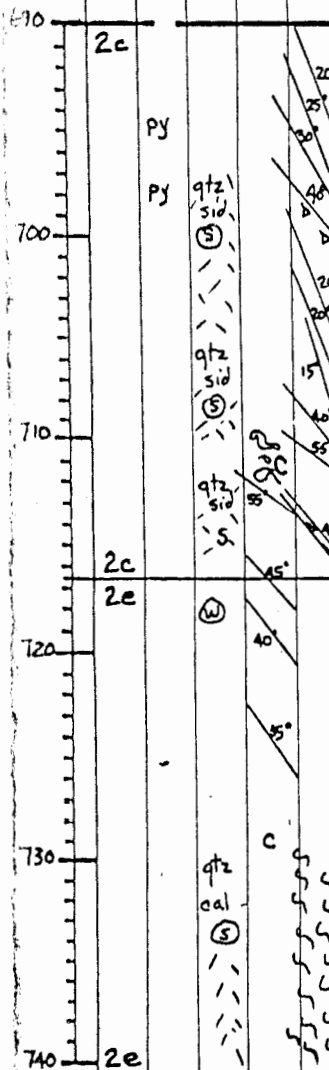
FOOTAGE

% Zn % Pb Oz/T Ag Average Grades

From To Length

From To Length Tag No.

From To Length Tag No. % Zn % Pb Oz/T Ag Average Grades



683'-716.5' ARGILLITE (2c)
Black, graphitic, moderately - strongly sheared argillite with numerous laminated sandstone bands. Moderate - strong quartz-siderite veining.
691'-711' Shear zone.
697' and 705'-fine disseminated pyrite with quartz-siderite veining.
710.5' Contorted bedding (tectonic).
715'-716' - silicified shear zone with fine disseminated pyrite, trace sphalerite.
Brecciated quartz-siderite veins.

From	To	Length	% Core Recov.	% R. Q. D.
697	705.5	8.5	92	5
705.5	711	5.5	91	33
711	716.5	5.5	83	28
716.5	725	8.5	100	32
725	733.5	8.5	94	30
733.5	739	5.5	100	9

716.5'-766' ARGILLITE (2e)
Black silty argillite, locally finely laminated with minor, thin calcareous beds. Locally, white quartz grains speckle argillite giving silty appearance.
718' - 1/2" limestone bed.
723' - .2" limestone lamina
729'-730' < 1/10" calcareous laminae.
731'-757' Fault Zone - very strong quartz ± calcite ± siderite veins have been brecciated; brecciated argillite beds;

See Previous Page
See Following Page

CLEAR LAKE PROJECT

DIAMOND DRILL RECORD

Hole Number 83-39

Logged By _____

GRAPHIC LOG					LOCATION SURVEY DATA					GENERAL COMMENTS									
Scale	Lithology	Mineralization	Alteration	Bedding \angle 's	Shears, fract.	Method	Points	DESCRIPTIVE LOG	CORE QUALITY			ASSAYS							
									FOOTAGE RUNS			% Core Recov.	% R.Q.D.	FOOTAGE				% Zn	% Pb
								From	To	Length	Tag No.			From	To	Length			
740	2e	qtz						ARGILLITE (2e) Cont'd											
		qtz sid						strong graphitic infilling along shear and fracture planes	739	748	9	66	19						
								746.5' - 2" limestone bed or fragment.											
750																			
								759.5' - 767' Fault zone - somewhat brecciated											
								massive quartz-siderite vein with graphite.	748	756.5	6.5	100	23						
760																			
	2e																		
	2c	py						766' - 789' ARGILLITE (2c)	766	774	8	100	9						
		qtz sid						Black argillite. with weak py stockwork, argillite becoming baritic 780' - 790'.	774	775	1	75							
770																			
	2c	py						780' - 789' Baritic argillite: light gray laminated argillite that is somewhat heavier than pure argillite; with 4-5% disseminated pyrite - almost banded.	775	785	10	100	46						
		py sp.																	
780																			
	2c	py						783.5' Trace sphalerite with pyrite.	785	795	10	100	65						
790	D	py																	

See Next Page

CLEAR LAKE PROJECT

DIAMOND DRILL RECORD

Hole Number 83-39

Logged By G. NORMAN

GRAPHIC LOG

Scale	Lithology	Mineralization	Alteration	Bedding \angle 's	Shears, fract.
790	D sph			70°	
	2a PY	qtz sid		30°	
800	2a			50°	
	D PY			75°	
810	4/6	py clay		80°	
820	4/6				
830					
840	4/6				

LOCATION SURVEY DATA

Method Sperry Sun Magnetic Single Shot
 Points Depth Dip Bearing
817' -57.5° 269.5°

GENERAL COMMENTS

CORE QUALITY

ASSAYS

FOOTAGE RUNS			% Core Recov.	% R.Q.D.	FOOTAGE			% Zn	% Pb	Oz/T Ag	Average Grades
From	To	Length			From	To	Length	Tag No.			
					789	794.8	5.8	9682	.01	.01	.01
					See Previous Page						
795	805	10	96	28							
805	810	5	63								
810	819	9	100	49	810	818	8.0	9683	.01	.01	.01
819	824	5	95	43							
824	831	7	81	15							
831	841	10	15	3							

DESCRIPTIVE LOG

789'-794.8' BARITE (D)

White-gray laminated barite with conformable pyrite bands (1/2" band at 791.8'). Sphalerite along one impyrite lamina.

794.8'-810' ARGILLITE (2a)

Black, carbonaceous argillite; moderately to strongly sheared. Faulted at upper and lower contact with quartz-siderite vein breccia.

806.5'-810' Fault breccia.

810'-818' BARITE (D)

White-gray laminated barite with conformable pyrite bands. Massive with no pyrite at 810'-813'.

Dark gray laminated barite - 6" section at 813'. 5% pyrite in laminated section.

818'-942' CHERT (4)/TUFF (6)

Light green chert with very fine laminated grey-green tuff beds (clay rich). The tuff beds usually contain fine disseminated pyrite and are often broken and discontinuous.

Brecciated section at upper contact to 820' with fine disseminated pyrite cubes (<1%).

CLEAR LAKE PROJECT

DIAMOND DRILL RECORD

Hole Number 83-39

Logged By G. NORMAN

GRAPHIC LOG

LOCATION SURVEY DATA

GENERAL COMMENTS

Method _____
Points _____

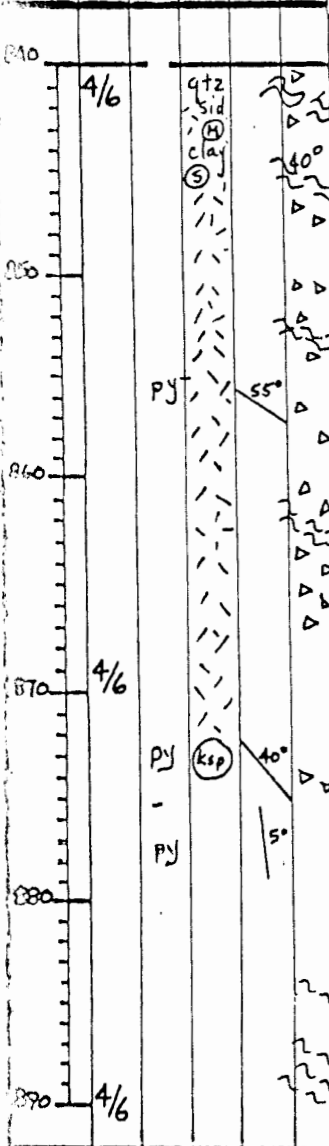
Scale _____
Lithology _____
Mineralization _____
Alteration _____
Bedding \angle 's _____
Shears, fract. _____

DESCRIPTIVE LOG

CORE QUALITY

ASSAYS

FOOTAGE RUNS			% Core Recov.	% R.Q.D.	FOOTAGE			% Zn	% Pb	Oz/T Ag	Average Grades
From	To	Length			From	To	Length	Tag No.			



CHERT (4) / TUFF (6) Cont'd

Pyrite is more finely disseminated in tuff than chert.

823'-824' - strongly broken rock. Some bands appear to have k-spar alteration.

840'-866' Fault Breccia - brecciated chert/tuff. Brecciated fragment size is usually <.5".

856' Some bedding preserved (at 55° to C.A.) with interbands of tuff, chert and k-spar rich bed?

870' Fine fracture with k-spar.

888'-897' Strongly crumbled and broken rock. Strong clay alteration and fine siderite dispersed throughout. Minor pyrite as disseminations and in veins.

		See Previous Page									
841	844	3	46								
844	848	4	94								
848	850	2	96								
850	854	4	44								
854	855.5	1.5	100								
855.5	863	7.5	100	26							
863	868	5	67								
868	875	7	99	34							
875	884	9	87	52							
884	890	6	89	19							

Hole Number 83-39

Logged By G. NORMAN

GRAPHIC LOG

Score	Lithology	Mineralization	Alteration	Bedding L's	Shears, fract.
-------	-----------	----------------	------------	-------------	----------------

LOCATION SURVEY DATA

Method	<u>Sperry Sun Magnetic Single Shot</u>		
Points	<u>Depth</u>	<u>Dip</u>	<u>Bearing</u>
	<u>907'</u>	<u>-58.5°</u>	<u>276°</u>

GENERAL COMMENTS

890	4/6	py	clay		
			sil		
			qtz		
900		py			
	4/6				
910					
920					
930					
	4/6				
940					

DESCRIPTIVE LOG

CHERT (4) / TUFF (6) Cont'd

897'-900' Gouge

903'-911' Gouge

911'-917' Grey chert and tuff inter-banded with fine bands of conformable pyrite.

912'-915.5' Grey chert. Some fine-banded pyrite, weak quartz veins; moderately broken rock.

915.5'-922' Section appears to be becoming baritic - rock is somewhat heavier. 924.5' - 925.3' is barite.

Clay altered (possibly some talc); tuff beds are commonly sheared.

Pyrite occurs in bands (3-5%). Rock gradually becomes more baritic.

CORE QUALITY					ASSAYS						
FOOTAGE RUNS			% Core Recov.	% R.P.D.	FOOTAGE			% Zn	% Pb	Oz/T Ag	Average Grades
From	To	Length			From	To	Length	Tag No.			
890	893	3	89	25							
893	899	6	39								
899	904	5	74	22							
904	911	7	12								
911	915.5	4.5	73	30							
915.5	917	1.5	100								
917	927	10	99	75							
927	937	10	100	'84							
See Following Page											

CLEAR LAKE PROJECT

DIAMOND DRILL RECORD

Hole Number 83-39

Logged By G. NORMAN

GRAPHIC LOG

LOCATION SURVEY DATA

GENERAL COMMENTS

Scale	Lithology	Mineralization	Alteration	Bedding L's	Shears, fract.
960	D	Pz 5-10%			30°
970	D	Pz 5-10%			25°
980	D	Pz 1-3%, 5-10%	clay		30°
990	D	Py 5-20%			25°
1000	D	Pz 3-5%			5°
1010	D	Py 10%			30°
1020	D	Pz 3-5%			
1030	D	Pz 3-5%			

Method _____
Points _____

DESCRIPTIVE LOG

CHERT (4)/TUFF (6) Contd

942'-954' BARITE (D)
Light gray to whitish laminated barite with pyrite as bands and discontinuous from <1% to 10%. (section 947'-954' is 5% to 10% pyrite by volume).

954'-961' CHERT/TUFF (4/6)
Light gray chert with greenish-gray clay-altered wispy bands of tuff. Pyrite occurs usually as fine bands within the tuff bands up to 10% by volume. Upper and lower contacts weakly sheared at 25° to C.A. and 30° to C.A. respectively. Unit is cut by strong, coarse, quartz siderite veins.

961'-1049' BARITE (D)
Light gray to whitish massive to laminated barite with some strong pyritic sections of 10% to >50% pyrite from 1001'-1004' and 1025'-1048'.

CORE QUALITY

ASSAYS

FOOTAGE RUNS			% Core Recov.	% R.Q.D.	FOOTAGE			% Zn	% Pb	Oz/T Ag	Average Grades
From	To	Length			From	To	Length				
937	947	10	98	82							
942	952	10.0			942	952	10.0	9684	.01	.01	.02
947	957	10	100	63							From 942' To 1047' (105') Zn 0.01% Pb 0.01% Ag 0.02%
952	961	9.0			952	961	9.0	9685	.01	.01	.01
957	967	10	100	75							
961	971	10.0			961	971	10.0	9686	.02	.01	.01
967	977	10	66	23							
971	977	6.0			971	977	6.0	9687	.01	.01	.01
977	979.8	2.5			977	979.8	2.5	9688	.01	.01	.04
977	987	10	99	43	979.8	985	5.5	9689	.01	.01	.01
					985	990	5.0	9690	.01	.01	.01

See Following Page

CLEAR LAKE PROJECT

DIAMOND DRILL RECORD

Hole Number 83-39

Logged By G. NORMAN

GRAPHIC LOG

LOCATION SURVEY DATA

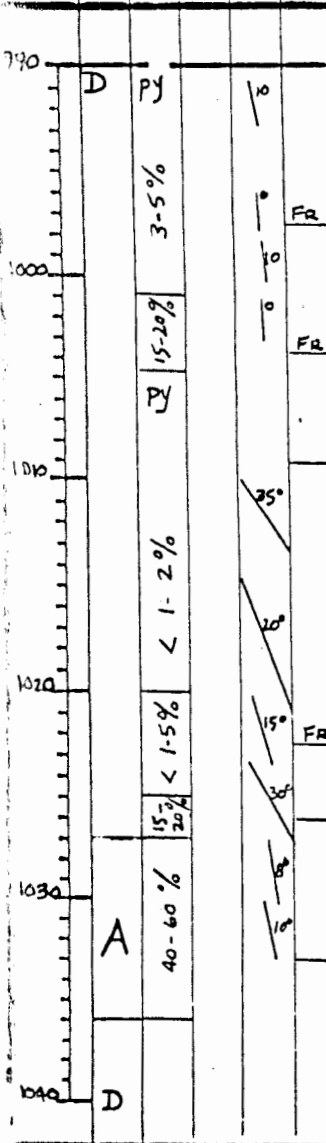
Method Sperry Sun Magnetic Single Shot
 Points Depth Dip Bearing
1007' -59.5° 278°

GENERAL COMMENTS

Scale
 Lithology
 Mineralization
 Alteration
 Bedding \angle 's
 Shears, fract.

DESCRIPTIVE LOG

CORE QUALITY					ASSAYS						
FOOTAGE RUNS			% Core Recov.	% R.Q.D.	FOOTAGE			% Zn	% Pb	Oz/T Ag	Average Grades
From	To	Length			From	To	Length				



BARITE (D) Cont'd

966'-967.5' Chert/tuff bed with faulted lower contact.

1001'-1004' Pyrite band 15% - 20%
 1004'-1020' Pyrite < 1% - 2%

1020'-1025' Pyrite < 1% - 5%

1025'-1027' Pyrite band 15% - 20%
 1027'-1036' Massive sulphide section: pyrite 40% - 60%

987	997	10	100	67	990	995.5	5.5	9691	.01	.01	.01
997	1007	10	98	57	995.5	1001	5.5	9692	.01	.01	.01
					1001	1005	4.0	9693	.01	.01	.03
1007	1017	10	100	46	1005	1015.5	10.5	9694	.01	.01	.01
1017	1023	6	99		1015.5	1021	5.5	9695	.01	.01	.01
1023	1024	1	83	33	1021	1027	6.0	9696	.01	.01	.01
1024	1034.5	10.5	100	32	1027	1032	5.0	9697	.01	.01	.04
1034.5	1036	1.5	100								
					1032	1040	8.0	9698	.02	.01	.01

See Following Page

CLEAR LAKE PROJECT

DIAMOND DRILL RECORD

Hole Number 83-39

Logged By G. NORMAN

GRAPHIC LOG

Scale	Lithology	Mineralization	Alteration	Bedding \angle 's	Shears, fract.
1040	D	3-5% S			
1050	4	PY		30°	
1060	4	PY		10°	
1070	4 A/6	PY	clay	15°	
1080				20°	
1090	4 A/6	PY	clay	15°	

LOCATION SURVEY DATA

Method _____
Points _____

DESCRIPTIVE LOG

BARITE (D) Cont'd

1041'-1044' Pyritic section with 30%
40% pyrite. Spot of bitumen at 1042'
and a clay-altered fracture.

1049'-1070' CHERT (4)

Grey massive & laminated chert with pyrite
laminae. Upper contact is sheared at 30° to
core axis.

1049'-1061' Massive grey chert

1061'-1066' Laminated grey chert

1066'-1070' Massive grey chert

1070'-1318' CHERT (4)/TUFF (6)

Laminated dark and grey chert with 1 to 5mm
light green clay-rich tuffaceous bands.

Pyrite is more closely associated with tuffaceous
bands and occurs as wispy lenses and broken
bands or fragments up to 10%-15%.

GENERAL COMMENTS

CORE QUALITY

FOOTAGE RUNS			% Core Recov.	% R.Q.D.
From	To	Length		

1036	1046	10	100	42
1046	1047	1	46	
1047	1052	5	93	23
1052	1054	2	100	50
1054	1056	2	67	22
1056	1057	1	79	
1057	1061	4	100	19
1061	1067	6	100	
1067	1071	4	94	9
1071	1075	4	100	9
1075	1075.5	0.5	100	
1075.5	1079	3.5	100	41
1079	1089.5	10.5	100	78
See Following Page				

ASSAYS

FOOTAGE				% Zn	% Pb	Oz/T Ag	Average Grades
From	To	Length	Tag No.				

1040	1043	3.0	9699	.04	.04	.11	
1043	1047	4.0	9700	.01	.01	.01	
See Following Page							

CLEAR LAKE PROJECT

DIAMOND DRILL RECORD

Hole Number 83-39

Logged By G. NORMAN

GRAPHIC LOG

LOCATION SURVEY DATA

GENERAL COMMENTS

Method _____
Points _____

DESCRIPTIVE LOG

CHERT (4)/TUFF (6) Cont'd

As before

Overall bedding averages 10%-15% to core axis

CORE QUALITY

ASSAYS

FOOTAGE RUNS

%
Core
Recov.

%
R.Q.D.

FOOTAGE

%
Zn

%
Pb

Oz/T
Ag

Average
Grades

From

To

Length

%
Core
Recov.

%
R.Q.D.

From

To

Length

Tag
No.

%
Zn

%
Pb

Oz/T
Ag

Average
Grades

1089.5

1100

10.5

100

87

1100

1110.5

10.5

95

75

1110.5

1121

10.5

99

27

1121

1131

10

97

25

1131

1137

6

100

7

See following page

1090

1100

1110

1120

1130

1140

4/6

P₃

P₃

P₃

4/6

10°

5°

10°

15%

40°

10°

15°

Shears, fract.

CLEAR LAKE PROJECT

DIAMOND DRILL RECORD

Hole Number 83-39

Logged By G. NORMAN

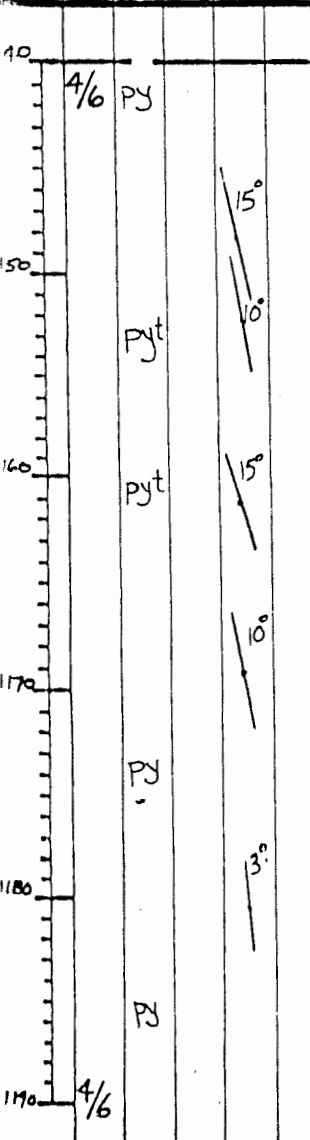
GRAPHIC LOG

LOCATION SURVEY DATA

GENERAL COMMENTS

Method _____
Points _____

Scale
Lithology
Mineralization
Alteration
Bedding \angle 's
Shears, fract.



DESCRIPTIVE LOG

CHERT (4)/TUFF (6) Cont'd

Section 1156'-1162' contains a higher percentage of pyrite (as fragments?) up to 20% and also higher percentage of tuffaceous banding.

CORE QUALITY

ASSAYS

FOOTAGE RUNS			% Core Recov.	% R.Q.D.	FOOTAGE			% Zn	% Pb	Oz/T Ag	Average Grades
From	To	Length			From	To	Length	Tag No.			
1137	1142	5	98	21							
1142	1150	8	100	15							
1150	1157.5	7.5	100	38							
1157.5	1167	9.5	98	64							
1167	1169.5	2.5	100	32							
1169.5	1179	9.5	98	38							
1179	1184	5	80	40							
1184	1191	7	99	31							

CLEAR LAKE PROJECT

DIAMOND DRILL RECORD

Hole Number 83-39

Logged By G. NORMAN

GRAPHIC LOG

LOCATION SURVEY DATA

GENERAL COMMENTS

Method _____
Points _____

Scale	Lithology	Mineralization	Alteration	Bedding \angle 's	Shears, fract.
1190	4/6	PJ		15°	
1200		PJ		13°	
1210				10°	
1220				10°	
1230		PY	5%	15°	
1240	4/6	PY		17°	

DESCRIPTIVE LOG

CHERT (4) / TUFF (6) Cont'd

1195'-1230' Interbedded laminated grey chert and light green, very fine-grained tuff beds with pyrite seams and fragments.
Increase in tuff content to 5% by vol.

1232' Sample taken for thin section. See thin section report JDH 39-1232'. Rock is described as baritic chert with 4-5% pyrite, 7-8% barite.

CORE QUALITY

FOOTAGE RUNS			% Core Recov.	% R. Q. D.
From	To	Length		

ASSAYS

FOOTAGE				% Zn	% Pb	Oz/T Ag	Average Grades
From	To	Length	Tag No.				

See Previous Page

1191	1196	5	96	48
------	------	---	----	----

1196	1201	5	93	22
------	------	---	----	----

1201	1211	10	99	38
------	------	----	----	----

1211	1220	9	99	40
------	------	---	----	----

1220	1229	9	100	53
------	------	---	-----	----

1229	1239.5	10.5	100	72
------	--------	------	-----	----

See Following Page

CLEAR LAKE PROJECT

DIAMOND DRILL RECORD

Hole Number 83-39

Logged By G. NORMAN

GRAPHIC LOG

LOCATION SURVEY DATA

GENERAL COMMENTS

Method Sperry Sun Magnetic Single Shot
 Points Depth Dip Bearing
1286' -59° 278.5°

Scale
 Lithology
 Mineralization
 Alteration
 Bedding \angle 's
 Shears, fract.

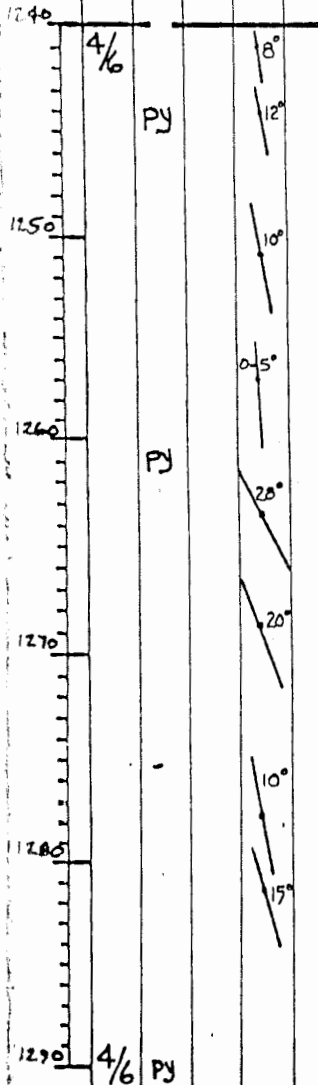
DESCRIPTIVE LOG

CORE QUALITY

ASSAYS

FOOTAGE RUNS			% Core Recov.	% R.Q.D.	FOOTAGE			% Zn	% Pb	% Cu/T	Average Grades
From	To	Length			From	To	Length	Tag No.			

CHERT (4) / TUFF (6) Cont'd



1275'-1318' Light grey chert with minor tuffaceous bands.

1239.5	1248	8.5	100	55							
1248	1258.5	10.5	100	68							
1258.5	1269	10.5	99	68							
1269	1279	10	99	83							
1279	1289.5	10.5	100	42							
See Following Page											

CLEAR LAKE PROJECT

DIAMOND DRILL RECORD

Hole Number 83-39

Logged By G. NORMAN

GRAPHIC LOG

Scale	Lithology	Mineralization	Alteration	Bedding \angle 's	Shears, fract.
-------	-----------	----------------	------------	---------------------	----------------

Method _____
Points _____

LOCATION SURVEY DATA

GENERAL COMMENTS

DESCRIPTIVE LOG

CORE QUALITY

ASSAYS

FOOTAGE RUNS			% Core Recov.	% R.Q.D.	FOOTAGE			% Zn	% Pb	Oz/T Ag	Average Grades
From	To	Length			From	To	Length	Tag No.			

1290					
	4/6			8'	
		PY			
1300				15'	
1310		PY			
	4/6	PY			
1320	4				
1330					
1340	4				

CHERT (4)/TUFF (6) Cont'd

1318'-1377' CHERT (4)

1318'-1328' Brecciated (fault zone)

Light grey massive chert

Fault at 1323.5'. Very minor tuff bands at 1323'-1328'.

1328'-1377' Massive grey black chert with minor laminations

Graphite on some fracture planes

1289.5	1299.5	10.5	97	63	
1299.5	1310	10.5	96	52	
1310	1320	10	100	69	
1320	1328	8	93	55	
1328	1331	3	97	42	
1331	1337	6	97	38	
1337	1341.5	4.5	100	21	

Hole Number 83-39

Logged By G. NORMAN

GRAPHIC LOG					LOCATION SURVEY DATA		GENERAL COMMENTS												
Scale	Lithology	Mineralization	Alteration	Bedding \angle 's	Shears, fract.	Method	CORE QUALITY				ASSAYS								
						Points	FOOTAGE RUNS			% Core Recov.	FOOTAGE			% Zn	% Pb	Oz/T Ag	Average Grades		
DESCRIPTIVE LOG						From	To	Length			From	To	Length	Tag No.					
<u>CHERT (4)</u>																			
1340	4			15°															
1350		Sph Sph	qtz sd	20°		1349'-1371' Sphalerite in veins with quartz-siderite and minor disseminations. Development of weak quartz-stockwork and some pyrite stringers.													
1360		Py	/			1349' Sphalerite as fine dissemination													
			/			1350'-1351' Sph disseminated in quartz veins													
			/			1367' Sphalerite along fracture plane													
		Sph py Sph	/			1369' Sphalerite as fracture filling with quartz & pyrite													
1370		Sph sph	/	30° 40°		1362'-1372' Black laminated chert, somewhat faulted & sheared with pyrite bands													
	4					Two bands of sphalerite 1mm & 3mm thick at 1371.5'.													
1380	6a			10°		Sphalerite with quartz at 1373'.													
1390	6a			10°															

CORE QUALITY					ASSAYS					
FOOTAGE RUNS			% Core Recov.	FOOTAGE			% Zn	% Pb	Oz/T Ag	Average Grades
From	To	Length		From	To	Length	Tag No.			
1341.5	1350	9.5	100	56						
1350	1360	10	100	45						
1360	1366	6	97	31						
1366	1371	5	100	50						
1371	1381.5	10.5	93	71						
1381.5	1391	9.5	97	71						

Hole Number 83-39

Logged By G. NORMAN

GRAPHIC LOG

LOCATION SURVEY DATA

GENERAL COMMENTS

Method _____
 Points _____

Scale	Lithology	Mineralization	Alteration	Bedding \angle 's	Shears, fract.
1390	6a	PJ			
1400		PJ		10°	
1410				30°	
1420				12°	
1430				2°	
1440	6a	PJ		10°	

DESCRIPTIVE LOG

1377'-1466.5' CHERTY TUFF (6a)

Grey massive cherty tuff with minor chert

Bands & fragments contain disseminated pyrite (3-4%) crystals and weak stockwork

Some siderite stringers to 1401'

Sample sent in for thin section at 1426' - is described as layered siderite chert, siltstone, mudstone with chert lenses.

CORE QUALITY

ASSAYS

FOOTAGE RUNS			% Core Recov.	% R.Q.D.	FOOTAGE				% Zn	% Pb	Oz/T Ag	Average Grades
From	To	Length			From	To	Length	Tag No.				
		See Previous Page										
1391	1401	10	99	55								
1401	1410	9	100	93								
1410	1420	10	100	63								
1420	1430	10	100	71								
1430	1440	10	96	47								

CLEAR LAKE PROJECT

DIAMOND DRILL RECORD

Hole Number 83-39

Logged By G. NORMAN

GRAPHIC LOG

LOCATION SURVEY DATA

GENERAL COMMENTS

Method _____
Points _____

DESCRIPTIVE LOG

CORE QUALITY

ASSAYS

FOOTAGE RUNS

%
Core
Recov.

%
R. Q. D.

FOOTAGE

%
Zn

%
Pb

Oz/T
Ag

Average
Grades

From

To

Length

%
Core
Recov.

%
R. Q. D.

From

To

Length

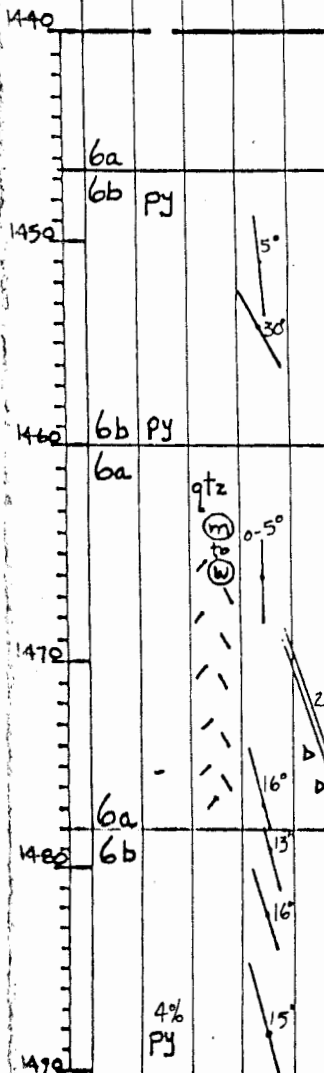
Tag
No.

%
Zn

%
Pb

Oz/T
Ag

Average
Grades



1440 MASSIVE CHERTY TUFF (6a) Cont'd

1440 1446 6 91

1450 1460 6b PY
1446.5-1460' LAMINATED CHERTY TUFF (6b)

Light green fine-grained rock (appears tuffaceous) with euhedral pyrite crystals (<1%) & siderite bands and/or veins (wispy laminae). Sample sent for thin section at 1453' - described as cherty siltstone-

1446 1456.5 10.5 99 68

mudstone with abundant sericite (altered tuffaceous material ??) and 5-7% barite lenses.

1456.5 1467 10.5 100 58

1470 1480 6a
1460'-1478' MASSIVE CHERTY TUFF (6a)

Light grey massive cherty (siliceous) tuffaceous-looking fine-grained rock with thin grey chert bands or fragments. Cut by mod.-weak quartz stockwork.

1467 1477.5 10.5 99 69

1477.5 1488 10.5 99 57

See Following Page

CLEAR LAKE PROJECT

DIAMOND DRILL RECORD

Hole Number 83-39

Logged By G. NORMAN

GRAPHIC LOG

LOCATION SURVEY DATA

GENERAL COMMENTS

Scale
Lithology
Mineralization
Alteration
Bedding \angle 's
Shears, fract.

Method Sperry Sun Magnetic Single Shot
Points Depth Dip Bearing
1523' -57° 277.5°

DESCRIPTIVE LOG

CORE QUALITY

ASSAYS

FOOTAGE RUNS			% Core Recov.	% R.Q.D.	FOOTAGE			% Zn	% Pb	Oz/T Ag	Average Grades
From	To	Length			From	To	Length	Tag No.			

1470
6b
Py
4% Py
1500
6b
4
1520
10°
6°
1530
30°
1540
4

1478'-1512' LAMINATED CHERTY TUFF (6b)

Light greenish coloured laminated cherty rock with lighter green clay-rich bands from 1489'-1494' with 4% fine euhedral pyrite crystals \neq with some what of a mottled pinkish green coloration. at 1496'-1512' becomes more cherty with greenish tuff bands.

1488 1498.5 10.5 100 81

1498.5 1509 10.5 99 64

1512'-1571' CHERT (4)

1512'-1514' Light grey massive chert with minor greenish tuffaceous laminations

1509 1519.5 10.5 100 67

1519.5 1527 7.5 97 26

1527 1536 9 100 80

See Following Page

CLEAR LAKE PROJECT

DIAMOND DRILL RECORD

Hole Number 83-39

Logged By G. NORMAN

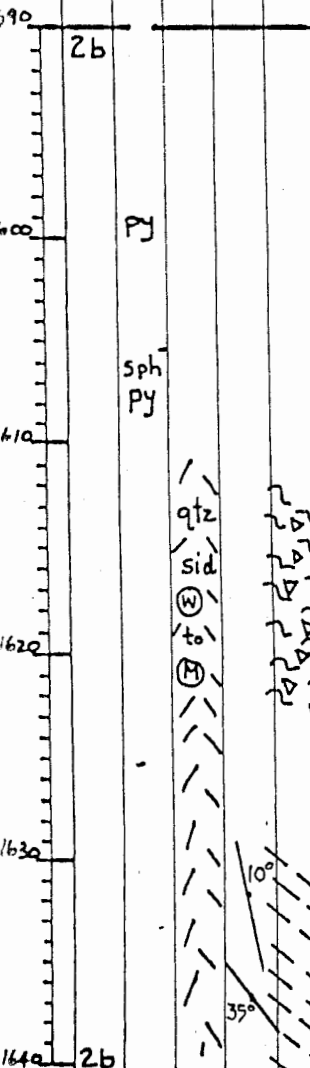
GRAPHIC LOG

LOCATION SURVEY DATA

GENERAL COMMENTS

Method _____
Points _____

Scale
Lithology
Mineralization
Alteration
Bedding \angle 's
Shears, fract.



DESCRIPTIVE LOG

ARGILLITE (2b) Cont'd

1584'-1598.5' Fault breccia

Shear planes at 30° to core axis.

1598.5'-1608.5' Black carbonaceous argillite with
minor pyrite seams & minor pin head specks
of sphalerite at 1607' with quartz-siderite
vein. Pyrite as dissemination and minor
bands. (1% by vol.)

1613'-1623' Fault breccia within
carbonaceous black argillite

1623'-1653' Black argillite with minor sandstone
interbeds (<1%).

CORE QUALITY

ASSAYS

FOOTAGE RUNS			% Core Recov.	% R.Q.D.	FOOTAGE			% Zn	% Pb	Oz/T Ag	Average Grades
From	To	Length			From	To	Length				

See Previous Page

1591	1597	6	96	10							
------	------	---	----	----	--	--	--	--	--	--	--

1597	1598.5	1.5	67								
------	--------	-----	----	--	--	--	--	--	--	--	--

1598.5	1604	5.5	100	44							
--------	------	-----	-----	----	--	--	--	--	--	--	--

1604	1608.5	4.5	91	37							
------	--------	-----	----	----	--	--	--	--	--	--	--

1608.5	1618	9.5	99	16							
--------	------	-----	----	----	--	--	--	--	--	--	--

1618	1627.5	9.5	88	15							
------	--------	-----	----	----	--	--	--	--	--	--	--

1627.5	1635	7.5	100	7							
--------	------	-----	-----	---	--	--	--	--	--	--	--

See Following Page

CLEAR LAKE PROJECT

DIAMOND DRILL RECORD

Hole Number 83-39

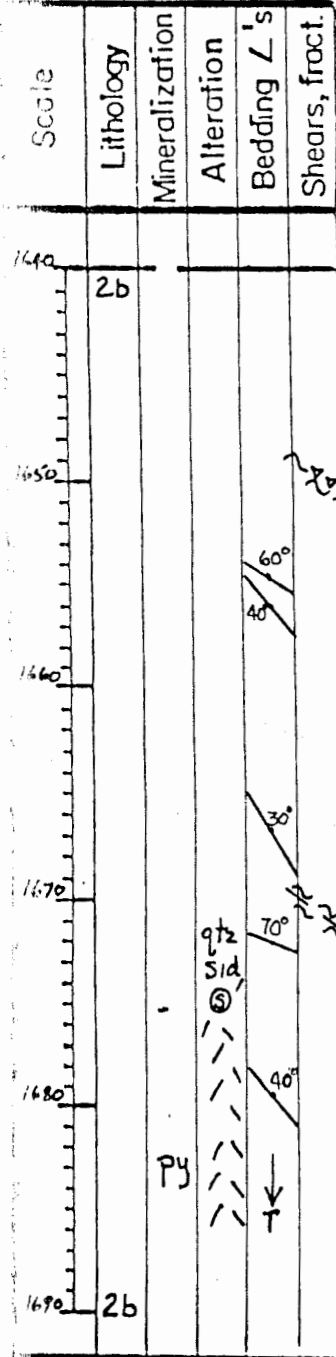
Logged By G. NORMAN

GRAPHIC LOG

LOCATION SURVEY DATA

GENERAL COMMENTS

Method _____
Points _____



DESCRIPTIVE LOG

ARGILLITE (2b) Cont'd

1655'-1668' Black carbonaceous argillite with an increase in percentage of sandstone interbeds.

1671.7'-1676' Black argillite with minor sandstone interbeds ~ 1" thick

1682'-1684.5' Graded sandstone bed indicates younging down hole. Cross cut by minor pyrite veins & weak quartz-siderite stringers.

CORE QUALITY

FOOTAGE RUNS			% Core Recov.	% R.Q.D.
From	To	Length		

ASSAYS

FOOTAGE				% Zn	% Pb	Oz/T Ag	Average Grades
From	To	Length	Tag No.				

1635	1645	10	95	33				
1645	1655	10	100	34				
1655	1665	10	98	17				
1665	1671.5	5.5	97	13				
1671.5	1676	4.5	96					
1676	1679	3	92					
1679	1683	4	100	19				
1683	1692.5	9.5	94	8				

CLEAR LAKE PROJECT

DIAMOND DRILL RECORD

Hole Number 83-39

Logged By G. NORMAN

GRAPHIC LOG

Section	Lithology	Mineralization	Alteration	Bedding \angle 's	Shears, fract.
1690	2b				
	Sph			30°	
	Sph			35°	
1700	Sph	qtz sid		10-20°	
	py				
1710	py			60°	
	py				
1720	py			40°	
				40°	
1730					
1740	2b				

LOCATION SURVEY DATA

Method Sperry Sun Magnetic Single Shot
 Points Depth Dip Bearing
1713' -57° 271°

GENERAL COMMENTS

CORE QUALITY

ASSAYS

FOOTAGE RUNS			% Core Recov.	% R. Q. D.	FOOTAGE			% Zn	% Pb	Oz/T Ag	Average Grades
From	To	Length			From	To	Length				
See Previous Page											
1692.5	1702.5	10	83	18							
1702.5	1708	5.5	83	18							
1708	1713	5	90								
1713	1723	10	90								
1723	1725	2	83								
1725	1736	11	89	11							
1736	1746.5	10.5	95	6							

DESCRIPTIVE LOG

ARGILLITE (2b) Cont'd

1685'-1706' Black soft carbonaceous argillite with

traces of sphalerite at:

1692.5' - Rimming 2" siderite band

1697' - Very fine fracture filling

1702.5' - Rimming siderite band

1706'-1748' Black argillite with minor sandstone

bands. Beds are somewhat contorted throughout

section with weak quartz-siderite & pyrite veining.

1718-1719' Fault, weak

1726.5 Minor sphalerite & pyrite with siderite vein (3mm x 2.5 cm)

Hole Number 83-39

Logged By G. NORMAN

GRAPHIC LOG

LOCATION SURVEY DATA

GENERAL COMMENTS

Method _____
 Points _____

Scale
 Lithology
 Mineralization
 Alteration
 Bedding L's
 Shears, fract.

DESCRIPTIVE LOG

CORE QUALITY

ASSAYS

FOOTAGE RUNS			% Core Recov.	% R. Q. D.	FOOTAGE			% Zn	% Pb	Oz/T Ag	Average Grades
From	To	Length			From	To	Length	Tag No.			

ARGILLITE (2b) Cont'd

1738' - 1743' Fault zone, with gouge & brecciated argillite.

See Previous Page

1753' - 1756' Fault shear zone

1746.5 1756.5 10 100 13

1748' - 1753 Black argillite as before with weak pyrite veins.

1756.5 1762 5.5 85 14

1762 1772 10 100 16

1772' END OF HOLE

Avg. Avg.
 90.6% 34.3%

DIAMOND DRILL SUMMARY LOG

Property CLEAR LAKE DESIGNATED AREA Property No. 5002 Hole Number 83-46

Coordinates : UTM 6961 394 N 492 100 E Commenced Drilling : NOVEMBER 20, 1983

Collar Elevation : 2279' Completed Drilling : NOVEMBER 28, 1983

Bearing at Collar : 266° Total Depth : 1214'

Dip at Collar : -60° Logged By : D. HAWKE/T. BORSCHNECK

Core Size / Method : ND / WIRELINE Claim : Sue 613

Drilling Contractor : E. CARON DIAMOND DRILLING

<u>SURVEY SUMMARY</u>				<u>PERTINENT ASSAY DATA</u>			<u>PERTINENT GEOLOGY</u>		
Depth	Dip	Bearing	Method	Interval	Zn%	Pb%	Ag ^{oz/t}	Interval	Rock Type
								0-50'	OVERBURDEN
529'	-60.5°	268°	S.S.*	862'-1078.5'	7.27	1.17	0.71	50'-126'	ARGILLITE (2a)
1203'	-58°	271°	S.S.*	937'-1057'	12.48	2.01	1.05	126'-131'	med-dark grey mottled
				957'-987'	16.14	2.04	0.78		CHERT (4)
				1012'-1032'	24.83	5.17	2.28	131'-167'	interbedded ARGILLITE (2b) and CHERT (4)
								167'-341'	SANDSTONE (1b)
									grey, laminated sandstone.
								341'-653'	ARGILLITE (2b/2c)
									parallel laminated sand bands
								653'-736.5'	LAPILLI TUFF (5)

* Sperry Sun Magnetic Single Shot

DIAMOND DRILL SUMMARY LOG

 Property CLEAR LAKE DESIGNATED AREA

 Property No. 5002

 Hole Number 83-46

<u>SURVEY SUMMARY</u>				<u>PERTINENT ASSAY DATA</u>	<u>PERTINENT GEOLOGY</u>	
Depth	Dip	Bearing	Method	Interval	Interval	Rock Type
					736.5'-745.5'	ARGILLITE (2d) black cherty argillite
					745.5'-786.5'	LAPILLI TUFF (5) minor sphalerite
					786.5'-811'	ARGILLITE (2e)
					811'-822'	CHERT (4)
					822'-827'	ARGILLITE (2e)
					827'-850'	CHERT (4)
					832'-837'	pyrite stockwork
					850'-853'	LAPILLI TUFF (5)
					853'-862'	CHERT (4) moderate to strong pyrite stockwork
					862'-867.5'	MASSIVE SULPHIDE (A) massive pyrite
					862.5'-863.75'	sphalerite rich
					867.5'-868.25'	CHERT (4) with pyrite stockwork
					868.25'-873.25'	MASSIVE SULPHIDE (A) massive Py.
					873.25'-879.5'	CHERT (4) mod. to strong py. stockwork

DIAMOND DRILL SUMMARY LOG

 Property CLEAR LAKE DESIGNATED AREA

 Property No. 5002

 Hole Number 83-46

<u>SURVEY SUMMARY</u>				<u>PERTINENT ASSAY DATA</u>	<u>PERTINENT GEOLOGY</u>	
Depth	Dip	Bearing	Method	Interval	Interval	Rock Type
					879.5' - 908.5'	MASSIVE SULPHIDE (A) massive pyrite
					908.5' - 915'	CHERT (4) mod. to strong Py stockwork
					915' - 932'	MASSIVE SULPHIDE (A) massive pyrite
					932' - 947'	CHERT (4) mod. to strong Py stockwork
					947' - 952'	LAPILLI TUFF / TUFF (5/6)
					952' - 970.5'	CHERT (4) pyrite and sphalerite stockwork, some galena & sphalerite massive sections
					970.5' - 975.5'	MASSIVE SULPHIDE (A) pyrite with ≥ 50% sphalerite and galena
					975.5' - 1003'	CHERT (4) with pyrite, sphalerite, galena stockwork

ASSAY DATA

DDH 83-46

SAMPLE NUMBER	FOOTAGE			ASSAYS		
	From	To	Length	Zn%	Pb%	Ag oz/t
48235	852.5	856	3.5	4.18	.18	.24
48236	862	867	5	.86	.07	.29
48237	867	873	6	.70	.10	.38
48238	879	887	8	1.90	.22	.66
48239	887	892	5	.39	.08	.23
48240	892	897	5	.51	.07	.28
48241	897	902	5	.78	.31	.27
48242	902	907	5	1.96	.20	.32
48243	907	912	5	1.10	.12	.28
48244	912	917	5	.40	.07	.19
48245	917	922	5	.46	.10	.28
48246	922	927	5	1.23	.18	.38
48247	927	932	5	.32	.13	.23
48248	932	937	5	1.71	.17	.13
48249	937	942	5	6.14	1.39	.63
48250	942	947.5	5.5	13.40	2.01	.96
48251	947.5	952	4.5	3.28	.32	.22
48252	952	957	5	10.20	1.64	.48
48253	957	962	5	18.60	.92	.46
48254	962	967	5	19.80	1.48	.84
48255	967	970	3	5.68	2.02	.50
48256	970	975.5	5.5	26.10	2.58	1.28
48257	975.5	982	6.5	11.30	2.51	.69
48258	982	987	5	11.65	2.51	.79
48259	987	992	5	4.30	.91	.50
48260	992	997	5	9.92	.75	.96
48261	997	1002	5	6.75	.74	.70
48262	1002	1007	5	4.88	.72	.68
48263	1007	1012	5	7.78	2.94	1.16
48264	1012	1017	5	15.65	3.36	2.40
48265	1017	1022	5	39.00	7.05	2.39
48266	1022	1027	5	27.80	6.90	2.56
48267	1027	1032	5	16.85	3.35	1.76
48268	1032	1037	5	6.16	1.12	1.03
48269	1037	1042	5	14.10	.60	1.49
48270	1042	1047	5	8.34	.35	1.36
48271	1047	1052	5	1.98	.42	.34
48272	1052	1057	5	5.18	1.22	.70
48273	1057	1062	5	.92	.40	.39
48274	1062	1067	5	.35	.12	.19
48275	1067	1072	5	.26	.04	.33
48276	1072	1078.5	6.5	.11	.04	.21

CLEAR LAKE PROJECT

DIAMOND DRILL RECORD

Hole Number 83-46

Logged By D. HAWKE / T. BORSCHNECK

GRAPHIC LOG					LOCATION SURVEY DATA					GENERAL COMMENTS										
Scale	Lithology	Mineralization	Alteration	Bedding L's	Shears, fract.	Method Points					CORE QUALITY					ASSAYS				
						DESCRIPTIVE LOG					FOOTAGE RUNS		% Core Recov.	% RQD	FOOTAGE			% Zn	% Pb	Oz/T Ag
						From	To	Length			From	To	Length	Tag No.						
						<u>OVERBURDEN cont'd</u>														
40																				
50	2a					50'-126'														
						massive black argillite, very graphitic														
						50'-62' fault zone, graphitic gouge and broken argillite.														
						71' fault, core broken and graphitic														
						74'-77' fault zone, graphitic gouge and broken core.														
						75'-87' weak calcite ± quartz stockwork														
70	2a					79'														
						79' 4" grey calcite vein														
						81'-84' fault zone, core is broken and graphitic														
						85' 4" thick gypsum vein														
						87'-108' fault zone core is broken, gougy and graphitic														
90	2a																			
						see following page														

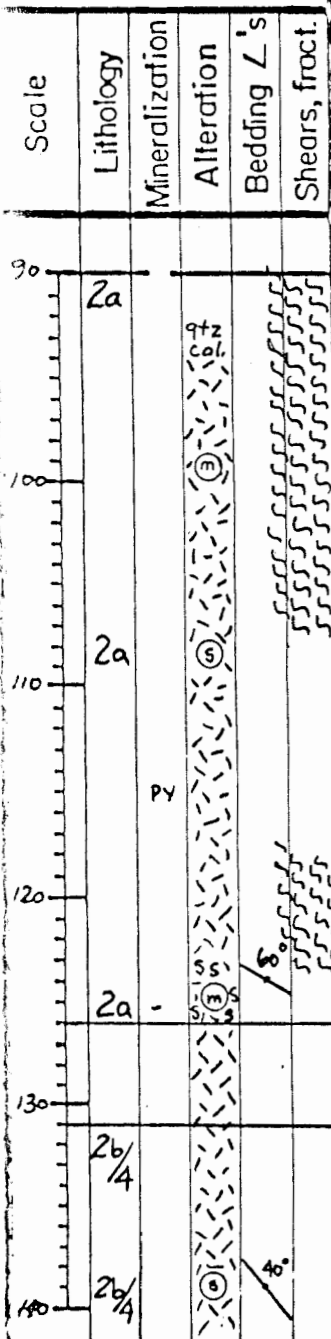
CLEAR LAKE PROJECT

DIAMOND DRILL RECORD

Hole Number 83-46

Logged By D. HAWKE / T. BORSCHNECK

GRAPHIC LOG



LOCATION SURVEY DATA

Method _____
Points _____

DESCRIPTIVE LOG

ARGILLITE (2a) cont'd

94'-141' moderate to strong quartz calcite stockwork

115' 2" thick Py vein

118'-123' fault zone, core is broken and gougy

123'-126' moderately silicified argillite

126'-131' CHERT (4)

medium to dark grey mottled chert, some stylolites and moderate to strong quartz carbonate stockwork

<1% py veins and blebs (veins up to .2" thick, blebs up to .4" diameter)

131'-167' ARGILLITE (2b)/CHERT (4)

massive black argillite with minor parallel laminated sand

GENERAL COMMENTS

CORE QUALITY

FOOTAGE RUNS			% Core Recov.	% RQD
From	To	Length		

ASSAYS

FOOTAGE				% Zn	% Pb	Oz/T Ag	Average Grades
From	To	Length	Tag No.				

89	95	6	86	21				
95	102	7	23	-				
102	111	9	87	20				
111	117	6	83	32				
117	123	6	100	15				
123	127	4	100	21				
127	137	10	100	54				
See following page								

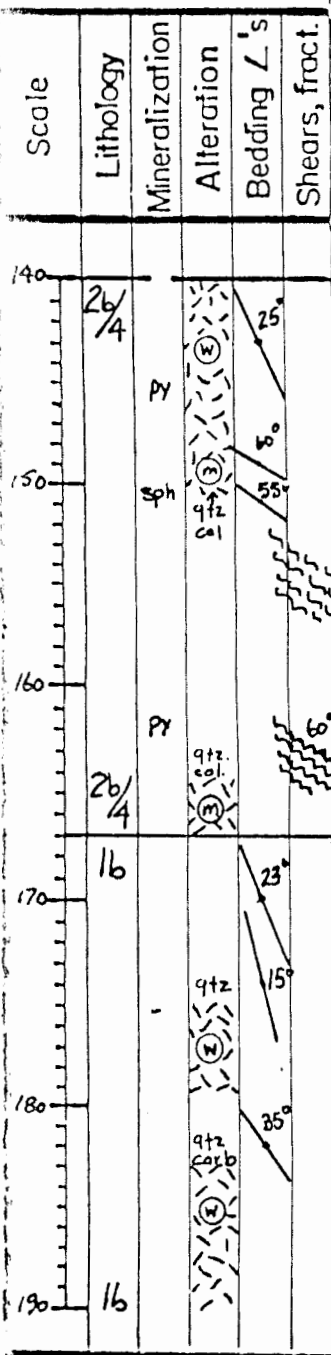
CLEAR LAKE PROJECT

DIAMOND DRILL RECORD

Hole Number 83-46

Logged By D. HAWKE / T. BORSCHNECK

GRAPHIC LOG



LOCATION SURVEY DATA

Method _____
 Points _____

GENERAL COMMENTS

DESCRIPTIVE LOG

ARGILLITE (26)/CHERT (4) cont'd

bands interbedded with med. grey chert and occasional dark grey limestone bands (chert beds up to 3' intersection, lmsst beds up to 1' intersection), graphitic fracture surfaces ~ parallel to bedding; avc. 1% (up to 10%) banded and disseminated Py (bands up to .4" thick, blebs to .8" diam.) <1% Py as veins (up to 10% locally)

138'-140' lmsst beds (up to 4" thick)

141'-149' weak quartz calcite stockwork

145' 10% fractured py veins

149'-150' chert is gougy & fragmental with ~2% diss. fine grained pyrite and med. quartz-carbonate stockwork

150.5' ~5% disseminated pink sphalerite within Py-quartz veins

153'-156' subrounded to angular chert fragments in an argillaceous and graphitic matrix (<1mm-3mm diam fragment)

162'-163' 10% diss. Py in bands up to .1" thick

163'-165' ground up chert and argillite fragments within a graphitic gouge matrix

165'-167' moderate quartz calcite stockwork

167'-341' SANDSTONE (16)

laminated, very fine grained grey sandstone local zones of breccia, crackle breccia and weak

CORE QUALITY

FOOTAGE RUNS			% Core Recov.	% RQD
From	To	Length		

ASSAYS

FOOTAGE				% Zn	% Pb	Oz/T Ag	Average Grades
From	To	Length	Tag No.				

137	147	10	100	57				
147	157	10	98	36				
157	161	4	85	10				
161	167	6	100	31				
167	176	9	97	38				
176	185	9	98	56				
See following page								

CLEAR LAKE PROJECT

DIAMOND DRILL RECORD

Hole Number 83-46

Logged By D. HAWKE / T. BORSCHNECK

GRAPHIC LOG

LOCATION SURVEY DATA

GENERAL COMMENTS

Method _____
Points _____

Scale
Lithology
Mineralization
Alteration
Bedding L's
Shears, fract.

DESCRIPTIVE LOG

CORE QUALITY

ASSAYS

FOOTAGE RUNS

% Core Recov.

% RQD

FOOTAGE

% Zn

% Pb

Oz/T Ag

Average Grades

From

To

Length

% Core Recov.

% RQD

From

To

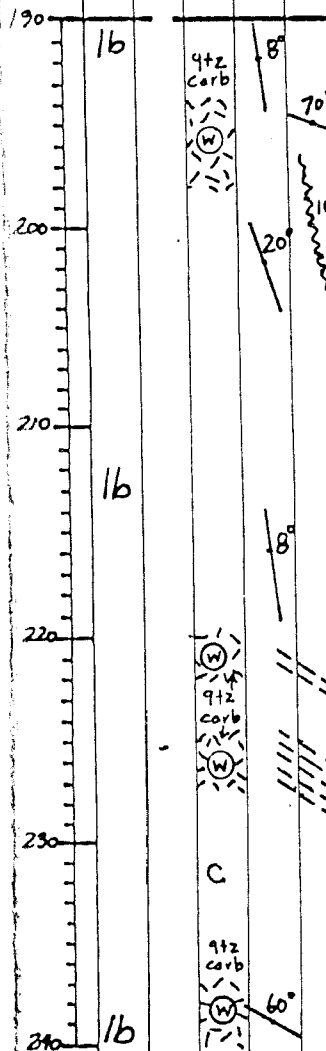
Length

Tag No.

% Zn

% Pb

Oz/T Ag



SANDSTONE (lb) cont'd
to moderate quartz stockwork (173'-178')
- carbonaceous partings common
194'-198' weak quartz carbonate stockwork

220'-222' weak quartz carbonate stockwork
222' contorted bedding
225'-227' weak quartz carbonate stockwork
232'-235' contorted bedding

237'-240' weak quartz carbonate stockwork

From	To	Length	% Core Recov.	% RQD
185	195	10	97	43
195	203	8	100	39
203	210	7	100	42
210	212	2	88	-
212	217	5	100	30
217	223	6	89	56
223	227	4	100	100
227	237	10	100	48
See following page				

CLEAR LAKE PROJECT

DIAMOND DRILL RECORD

Hole Number 83-46

Logged By D. HAWKE / T. BORSCHNECK

GRAPHIC LOG					LOCATION SURVEY DATA			GENERAL COMMENTS												
Scale	Lithology	Mineralization	Alteration	Bedding \angle 's	Shears, fract.	Method	Points	CORE QUALITY					ASSAYS							
								FOOTAGE RUNS			% Core Recov.	% RQD	FOOTAGE			% Zn	% Pb	Oz/T Ag	Average Grades	
From	To	Length	From	To	Length	Tag No.														
DESCRIPTIVE LOG																				
240	lb							<u>SANDSTONE (lb) cont'd</u>												
								237	247	10	98	16								
								248'-251' weak quartz carbonate stockwork												
250								247	255	8	100	15								
								256'-264' moderate quartz carbonate stockwork												
260	lb							255	265	10	94	41								
								265'-267' altered zone: bleached locally with minor pyrite												
270								265	275	10	100	52								
								268.5'-271.5' Breccia zone: small sandstone / chert / pyrite fragments (~35%, diam) are angular and occur in a sandy matrix (matrix supported) (slump breccia/debris flow?)												
280								275	285	10	100	88								
								279'-281' moderate quartz carbonate stockwork												
290	lb							284'-287' weak quartz carbonate stockwork												
								see following page												

CLEAR LAKE PROJECT

DIAMOND DRILL RECORD

Hole Number 83-46

Logged By D. HAWKE / T. BORSCHNECK

GRAPHIC LOG

LOCATION SURVEY DATA

GENERAL COMMENTS

Scale	Lithology	Mineralization	Alteration	Bedding \angle 's	Shears, fract.
340	2b/c				
350					
360	2b/c				
370					
380					
390	2b/c				

Method _____
Points _____

DESCRIPTIVE LOG

SANDSTONE (1b) cont'd
 341'-653' ARGILLITE (2b/c)
 - argillite with varying amounts of sand bands
 - sand bands are parallel laminated
 349'-353' fault zone, 10° to c. axis
 372' folded and contorted bedding
 386'-410' fault/shear zone with abundant
 quartz-carbonate stringers

CORE QUALITY

ASSAYS

FOOTAGE RUNS			% Core Recov.	% RQD	FOOTAGE				% Zn	% Pb	Oz/T Ag	Average Grades
From	To	Length			From	To	Length	Tag No.				
337	346.5	9.5	96	49								
346.5	356.5	10	100	50								
356.5	366.5	10	100	50								
366.5	374.5	8	100	24								
374.5	379	4.5	100	35								
379	384	5	100	13								
384	392	8	100	44								

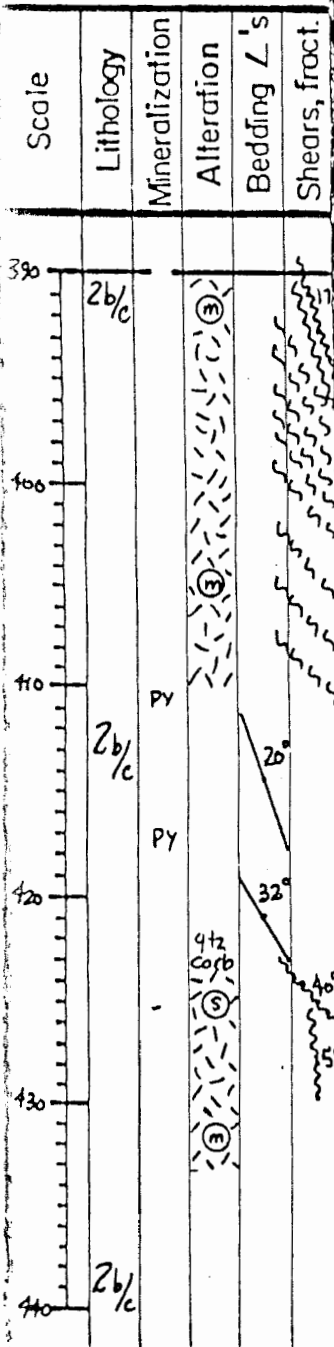
CLEAR LAKE PROJECT

DIAMOND DRILL RECORD

Hole Number 83-46

Logged By D. HAWKE / T. BORSCHNECK

GRAPHIC LOG



LOCATION SURVEY DATA

Method _____
 Points _____

DESCRIPTIVE LOG

ARGILLITE (2b/c) cont'd

410.5' pyrite nodules

417' pyrite nodule

424'-433' moderate to strong quartz-carbonate
 stockwork

GENERAL COMMENTS

CORE QUALITY

FOOTAGE RUNS			% Core Recov.	% RQD
From	To	Length		

See previous page

392 402 10 100 75

402 410 8 100 32

410 416 6 100 14

416 420 4 100 29

420 427 7 98 48

427 433 6 83 19

433 437 4 100 10

See following page

ASSAYS

FOOTAGE				% Zn	% Pb	Oz/T Ag	Average Grades
From	To	Length	Tag No.				

CLEAR LAKE PROJECT

DIAMOND DRILL RECORD

Hole Number 83-46

Logged By D. HAWKE / T. BORSCHNECK

GRAPHIC LOG						LOCATION SURVEY DATA				GENERAL COMMENTS										
Scale	Lithology	Mineralization	Alteration	Bedding \angle 's	Shears, fract.	Method Points				CORE QUALITY				ASSAYS						
						DESCRIPTIVE LOG				FOOTAGE RUNS			% Core Recov.	% RQD	FOOTAGE			% Zn	% Pb	Oz/T Ag
						From	To	Length			From	To	Length	Tag No.						
440	2b/c		(5)			437	443	6	86	19										
						ARGILLITE (2b/c) cont'd														
						443	453	10	98	10										
						440'-448' strong quartz carbonate stockwork														
						453	463	10	100	63										
						455'-465' moderate quartz carbonate stockwork														
						463	473	10	88	59										
						471'-475' moderate quartz carbonate stockwork														
						473	483	10	100	48										
						482'-493' strong quartz carbonate stockwork														
						483	493	10	99	33										
						487'-490' fault zone														

CLEAR LAKE PROJECT

DIAMOND DRILL RECORD

Hole Number 83-46

Logged By D. HAWKE / T. BORSCHNECK

GRAPHIC LOG

Scale	Lithology	Mineralization	Alteration	Bedding \angle 's	Shears, fract.
540	2b/c	Py	(E)		
550	Py		(E)		
560	2b/c		(E)		
570		Py	(E)	53°	
580		Py	(E)	40°	
590	2b/c	Py	(E)		

LOCATION SURVEY DATA

Method _____
 Points _____

DESCRIPTIVE LOG

ARGILLITE (2b/c) cont'd

549' nodular Pyrite

561'-566' weak quartz carbonate stockwork

572'-578' weak quartz carbonate stockwork

583'-588' weak quartz carbonate stockwork

587' nodular pyrite

GENERAL COMMENTS

CORE QUALITY

FOOTAGE RUNS			% Core Recov.	% RQD
From	To	Length		
540	550	10	100	69
550	560	10	100	67
560	570	10	100	62
570	578	8	77	41
578	587	9	100	58
See following page				

ASSAYS

FOOTAGE				% Zn	% Pb	Oz/T Ag	Average Grades
From	To	Length	Tag No.				

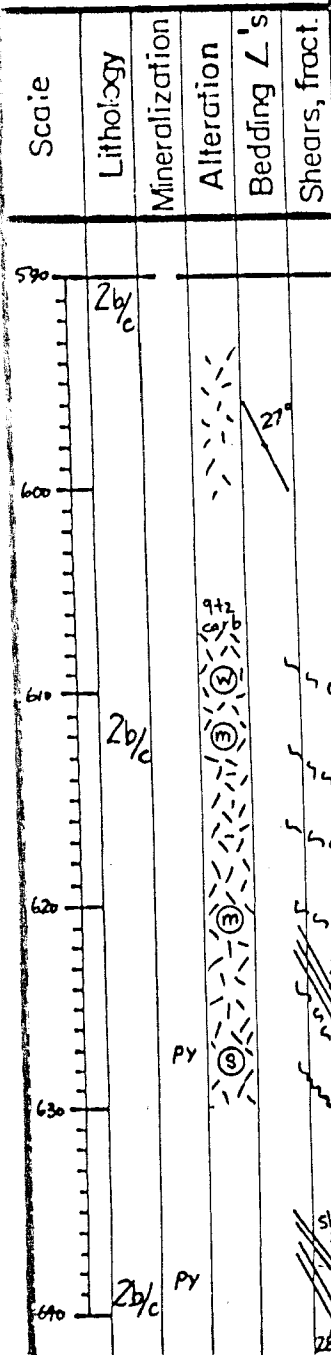
CLEAR LAKE PROJECT

DIAMOND DRILL RECORD

Hole Number 83-46

Logged By D. HAWKE / T. BORSCHNECK

GRAPHIC LOG



LOCATION SURVEY DATA

Method _____
Points _____

DESCRIPTIVE LOG

ARGILLITE (2b/c) cont'd.

607'-630' weak to strong quartz carbonate
stockwork

623'-630' highly sheared zone with abundant
broken quartz-carbonate stringers
(fault zone)

GENERAL COMMENTS

CORE QUALITY

FOOTAGE RUNS			% Core Recov.	% RQD
From	To	Length		
587	597	10	100	55
597	607	10	100	70
607	617	10	100	43
617	626	9	99	34
626	636.5	10.5	100	59
See following page				

ASSAYS

FOOTAGE				% Zn	% Pb	Oz/T Ag	Average Grades
From	To	Length	Tag No.				

CLEAR LAKE PROJECT

DIAMOND DRILL RECORD

Hole Number 83-46

Logged By D. HAWKE / T. BORSCHNECK

GRAPHIC LOG

Scale	Lithology	Mineralization	Alteration	Bedding \angle 's	Shears, fract.
-------	-----------	----------------	------------	---------------------	----------------

LOCATION SURVEY DATA

Method _____
 Points _____

GENERAL COMMENTS _____

640	2b/c				
650	2b/c			53°	
660	5	py		38°	
670	5			28°	
680	5				

DESCRIPTIVE LOG

ARGILLITE (2b/c) cont'd
 640'-644' weak quartz carbonate stockwork
 argillite is sheared and disrupted through to contact with tuff. which is also sheared for the first four feet.

653'-736.5' LAPILLI TUFF (5)
 lapilli tuff with sections of fine grained fragments. Local disseminated pyrite and small pyrite clusters.

670'-675' weak quartz carbonate stockwork
 677'-691' calcareous matrix to lapilli tuff.

CORE QUALITY					ASSAYS							
FOOTAGE RUNS			% Core Recov.	% RQD.	FOOTAGE				% Zn	% Pb	Oz/T Ag	Average Grades
From	To	Length			From	To	Length	Tag No.				
636.5	647	10.5	100	60								
647	657	10	100	69								
657	667	10	100	50								
667	677	10	99	63								
677	687	10	100	64								
see following page												

CLEAR LAKE PROJECT

DIAMOND DRILL RECORD

Hole Number 83-46

Logged By D. HAWKE / T. BORSCHNECK

GRAPHIC LOG					LOCATION SURVEY DATA					GENERAL COMMENTS												
Scale	Lithology	Mineralization	Alteration	Bedding L's	Shears, fract.	Method	Points	DESCRIPTIVE LOG					CORE QUALITY					ASSAYS				
													FOOTAGE RUNS			% Core Recov.	% RQD	FOOTAGE			% Zn	% Pb
								From	To	Length			From	To	Length	Tag No.						
740	2d																					
	2d	X																				
	5				47°																	
750	5	py																				
	5	py																				
760	5	py sph																				
	5	sph																				
770	5	py			49°																	
	5	py																				
	5	py																				
780	5	py			C																	
	5	py																				
	5																					
790	2e				82°																	

CLEAR LAKE PROJECT

DIAMOND DRILL RECORD

Hole Number 83-46

Logged By D. HAWKE / T. BORSCHNECK

GRAPHIC LOG

Scale	Lithology	Mineralization	Alteration	Bedding \angle 's	Shears, fract.
790	2e				
800		Py	qtz carb		
		Py			
810	2e	sph			
	4	Py			
		Py			
820	4	Py			
	2e				
830	4				
			qtz carb		
	4	Py			
840					

LOCATION SURVEY DATA

Method _____
 Points _____

DESCRIPTIVE LOG

ARGILLITE (2e) cont'd
 weakly calcareous to calcareous lamellae.
 Argillite itself doesn't appear to be calcareous
 - some calcareous lamellae appear to be replaced by py
 802', 805' argillite is pyritic and slightly bleached
 805'-811' siliceous argillite
 800'-809' weak quartz carbonate stockwork

811'-822' CHERT (4)
 chert or very silicified argillite with
 bands and blebs of pyrite
 811'-817' moderate quartz carbonate stockwork.

822'-827' ARGILLITE (2e) with calcareous bands
 and lamellae
 826' quartz carbonate filled shear

827'-850' CHERT (4)
 827'-837' altered section (arg → chert → breccia
 with Py & minor sphalerite, sheared progressively
 to 837'
 837'-850' sheared section with abundant broken

GENERAL COMMENTS

CORE QUALITY

FOOTAGE RUNS			% Core Recov.	% RQD.
From	To	Length		
787	797	10	100	86
797	807	10	100	82
807	817	10	98	94
817	827	10	100	53
827	837	10	100	78
See following page				

ASSAYS

FOOTAGE				% Zn	% Pb	Oz/T Ag	Average Grades
From	To	Length	Tag No.				

CLEAR LAKE PROJECT

DIAMOND DRILL RECORD

Hole Number 83-46

Logged By D. HANKE / T. BORSCHNECK

GRAPHIC LOG

Scale	Lithology	Mineralization	Alteration	Bedding \angle 's	Shears, fract.
-------	-----------	----------------	------------	---------------------	----------------

890	A	Py			
		Sph			
900					
	A	Py			
910	4	(S)			
	4	(S)			
	A	Py			
920					
	A	Py			
930	4	(S)			
	4	(S)			
940					

LOCATION SURVEY DATA

Method _____
 Points _____

DESCRIPTIVE LOG

MASSIVE SULPHIDE (A) cont'd

897' minor sphalerite

908.5' - 915' CHERT (4)
 dark grey chert with moderate to strong pyrite stockwork

915' - 932' MASSIVE SULPHIDE (A)
 massive pyrite

932' - 947' CHERT (4)
 dark grey chert with moderate to strong pyrite stockwork, there is some light grey chert (silicified tuff?) at start

GENERAL COMMENTS

CORE QUALITY

FOOTAGE RUNS			% Core Recov.	% RQD
From	To	Length		

ASSAYS

FOOTAGE				% Zn	% Pb	Oz/T Ag	Average Grades
From	To	Length	Tag No.				

887	897	10	100	78	See Previous page						
892	897	5	48240	0.51	0.07	0.28					
897	902	5	48241	0.78	0.31	0.27					
902	907	5	48242	1.96	0.20	0.32					
907	912	5	48243	1.10	0.12	0.28					
912	917	5	48244	0.40	0.07	0.19					
917	922	5	48245	0.46	0.10	0.28					
922	927	5	48246	1.23	0.18	0.38					
927	932	5	48247	0.32	0.13	0.23					
932	937	5	48248	1.71	0.17	0.13					
See following page				937	942	5	48249	6.14	1.39	0.63	

CLEAR LAKE PROJECT

DIAMOND DRILL RECORD

Hole Number 83-46

Logged By D. HAWKE / T. BORSCHNECK

GRAPHIC LOG

LOCATION SURVEY DATA

GENERAL COMMENTS

Scale	Lithology	Mineralization	Alteration	Bedding L's	Shears, fract.
-------	-----------	----------------	------------	-------------	----------------

Method _____
Points _____

940	4	(S)			
	4	Sph			
850	5/6				
	4	Sph			
760					
	4	Sph			
	4	Sph			
670	A	Sph			
	4	Sph			
580					
	4	Sph			
490					
	4	Sph			

DESCRIPTIVE LOG

CHERT (4) cont'd
of section. Sphalerite common in irregular stringers

947'-952' LAPILLI TUFF/TUFF (5/6)
light grey tuff with sphalerite

952'-970.5' CHERT (4)
dark grey chert with Pyrite and sphalerite stockwork (>10% sph ave.)
- local sections of massive sphalerite with galena and pyrite

970.5'-975.5' MASSIVE SULPHIDE (A)
≥50% sphalerite + galena with pyrite

975.5'-1003' CHERT (4)
dark grey chert with pyrite, sphalerite, galena stockwork, local massive sulphide bands to 0.5' thick as well as fine grained sphalerite disseminations.

CORE QUALITY

ASSAYS

FOOTAGE RUNS				% Core Recov.	FOOTAGE				% Zn	% Pb	Oz/T Ag	Average Grades
From	To	Length	From		To	Length	Tag No.					
937	947	10	100	93	See Previous page						From 937' To 1057' (120') Zn 12.48% Pb 2.01% Ag 1.05oz	
	942	947.5	5.5	48250	13.40	2.01	0.96					
	947.5	952	4.5	48251	3.28	0.32	0.22					
	947	957	10	100	76							
	952	957	5	48252	10.20	1.64	0.48					
	957	962	5	48253	18.60	0.92	0.46					
	962	967	5	48254	19.80	1.48	0.84					
	967	970	3	48255	5.68	2.02	0.50				From 957' To 987' (30') Zn 16.14% Pb 2.04% Ag 0.78oz	
	970	975.5	5.5	48256	26.10	2.58	1.28					
	975.5	982	6.5	48257	11.30	2.51	0.69					
	977	987	10	100	100							
	982	987	5	48258	11.65	2.51	0.79					
	See following page											
	987	992	5	48259	4.30	0.91	0.50					

CLEAR LAKE PROJECT

DIAMOND DRILL RECORD

Hole Number 83-46

Logged By D. HAWKE / T. BORSCHNECK

GRAPHIC LOG					LOCATION SURVEY DATA					GENERAL COMMENTS														
Scale	Lithology	Mineralization	Alteration	Bedding L's	Shears, fract.	Method	Points	DESCRIPTIVE LOG			CORE QUALITY			ASSAYS										
								From	To	Length	From	To	Length	Tag No.	% Zn	% Pb	Oz/T Ag	Average Grades						
1040	A	Sph						<u>MASSIVE SULPHIDE (A) CONT'D</u>			1037	1047	10	100	80	See Previous page								
								1047' sphalerite content decreasing to <5%								1042	1047	5	48270	8.34	0.35	1.36		
1050		Sph						1052'-1055' sphalerite ~40%+?			1047	1057	10	100	68	1047	1052	5	48271	1.98	0.42	0.34		
	A	Sph														1052	1057	5	48272	5.18	1.22	0.70		
1060								1066.5'-1070' cherty section ≡ chert breccia dark grey - light grey chert fragments in Py matrix			1057	1067	10	100	58	1057	1062	5	48273	0.92	0.40	0.39		
																1062	1067	5	48274	0.35	0.12	0.19		
1070								1075' minor section of breccia: pyrite fragments surrounded by light grey chert = cemented fracture/shear zone.			1067	1077	10	100	60	1067	1072	5	48275	0.26	0.04	0.33		
	A															1072	1078.5	6.5	48276	0.11	0.04	0.21		
1080		Zb/c						1078'-1214' ARGILLITE (Zb/Zc) argillite with variable sand band content.			1077	1087	10	100	23									
								1078'-1122' weak to moderate quartz-carbonate stockwork								See following page								
1090		Zb/c						1078'-1084' fault/shear zone.																

CLEAR LAKE PROJECT

DIAMOND DRILL RECORD

Hole Number 83-46

Logged By D. HAWKE / T. BORSCHNECK

GRAPHIC LOG

LOCATION SURVEY DATA

GENERAL COMMENTS

Scale	Lithology	Mineralization	Alteration	Bedding \angle 's	Shears, fract.
-------	-----------	----------------	------------	---------------------	----------------

Method _____
Points _____

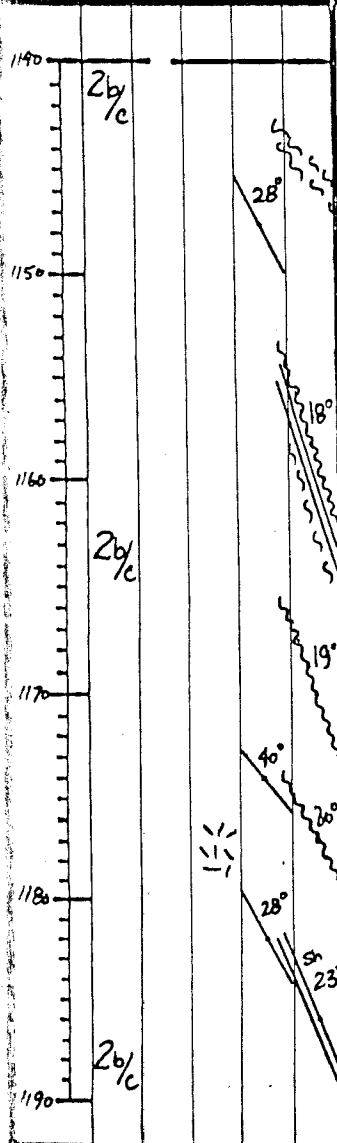
DESCRIPTIVE LOG

CORE QUALITY

ASSAYS

FOOTAGE RUNS			% Core Recov.	
From	To	Length		

FOOTAGE				% Zn	% Pb	Oz/T Ag	Average Grades
From	To	Length	Tag No.				



ARGILLITE (2b/2c) cont'd

1156'-1164' moderate to weak quartz carbonate stockwork

1172' nodular pyrite

See previous page				
1142	1150	8	100	11
1150	1160	10	100	30
1160	1168	8	86	25
1168	1177	9	100	31
1177	1182	5	92	45
1182	1191	9	100	37

DIAMOND DRILL SUMMARY LOG

Property CLEAR LAKE DESIGNATED AREA Property No. 5002 Hole Number 83-47

Coordinates : UTM 6 961 284 N / 492 092 E Commenced Drilling : NOVEMBER 12, 1983

Collar Elevation : 2310' Completed Drilling : NOVEMBER 20, 1983

Bearing at Collar : 270° Total Depth : 1278'

Dip at Collar : -60° Logged By : D. HAWKE / T. BORSCHNECK

Core Size / Method : NQ / WIRELINE Claim : 3004 F

Drilling Contractor : E. CARON DIAMOND DRILLING

<u>SURVEY SUMMARY</u>				<u>PERTINENT ASSAY DATA</u>			<u>PERTINENT GEOLOGY</u>		
Depth	Dip	Bearing	Method	Interval	Zn %	Pb %	Ag ^{oz} /t	Interval	Rock Type
685'	-59°	267°	S.S.*	1008.5'-1133'	4.78	1.52	0.70	0-25'	OVERBURDEN
1253'	-59°	271°	S.S.*	1030'-1056'	17.20	6.73	2.67	25'-38'	CASING - NO CORE RECOVERY
								38'-81'	ARGILLITE (2c)
								81'-133'	SANDSTONE (1a)
								133'-290'	ARGILLITE (2b)
								176' cross bedding in sand band indicates tops down hole; bedding 50° to core axis.	
* Sperry Sun Magnetic Single Shot								290'-354'	ARGILLITE (2c)
								354'-366'	SANDSTONE (1a/1b)

DIAMOND DRILL SUMMARY LOG

Property CLEAR LAKE DESIGNATED AREA

Property No. 5002

Hole Number 83-47

<u>SURVEY SUMMARY</u>				<u>PERTINENT ASSAY DATA</u>	<u>PERTINENT GEOLOGY</u>	
Depth	Dip	Bearing	Method	Interval	Interval	Rock Type
					366'-544'	ARGILLITE (2b)
					544'-602'	SANDSTONE/ARGILLITE (1b/2a)
					544'-582'	weak quartz carbonate stockwork
					602'-710'	ARGILLITE (2b)
						<<1% fractured PY blebs and trace of sphalerite
					710'-861'	ARGILLITE (2c)
					816'-848'	moderate to strong quartz carbonate stock work.
					815'-840'	shear/fault zone
					861'-890'	ARGILLITE (2b)
					890'-897.5'	FELSITE (KTF)
						pale cream colored with euhedral to subhedral feldspars
					897.5'-908'	ARGILLITE (2b)
					908'-915'	ARGILLITE (2c)
					915'-917'	LAPILLI TUFF (5)
						clasts to 1.4" long.

DIAMOND DRILL SUMMARY LOG

 Property CLEAR LAKE DESIGNATED AREA

 Property No. 5002

 Hole Number 83-47

<u>SURVEY SUMMARY</u>				<u>PERTINENT ASSAY DATA</u>	<u>PERTINENT GEOLOGY</u>	
Depth	Dip	Bearing	Method	Interval	Interval	Rock Type
					917'-934'	TUFF (6) trace sphalerite and galena.
					934'-953'	ARGILLITE (2b) 940'-953' moderate to strong PY stockwork
					953'-959'	LAPILLI TUFF (5) strong PY stockwork
					959'-969.5'	ARGILLITE (2d) weak to moderate PY stockwork
					969.5'-971.5'	MASSIVE SULPHIDE (A) massive pyrite
					971.5'-983'	ARGILLITE/CHERT (2b/4) weak to moderate PY stockwork
					983'-990'	LAPILLI TUFF/TUFF (5/6) weak PY stockwork
					990'-995'	MASSIVE SULPHIDE (A)

DIAMOND DRILL SUMMARY LOG

Property CLEAR LAKE DESIGNATED AREA Property No. 5002 Hole Number 83-47

<u>SURVEY SUMMARY</u>				<u>PERTINENT ASSAY DATA</u>	<u>PERTINENT GEOLOGY</u>	
Depth	Dip	Bearing	Method	Interval	Interval	Rock Type
						<i>massive pyrite</i>
					995'-1005'	CHERT (4)
						<i>moderate PY stockwork</i>
					1005'-1009'	LAPILLI TUFF (5)
						<i>moderate PY stockwork</i>
					1009'-1102'	MASSIVE SULPHIDE (A)
						<i>massive pyrite</i>
					1036'-1051.5'	high grade section of galena and sphalerite > 30% Pb + Zn
					1102'-1126'	ARGILLITE (2d) moderate PY stockwork
					1126'-1132'	MASSIVE SULPHIDE (A)
						<i>massive pyrite</i>
					1132'-1136'	ARGILLITE (2b)
					1136'-1142'	MASSIVE SULPHIDE (A)
						<i>massive pyrite</i>
					1142'-1278'	ARGILLITE (2b)
					1142'-1149'	moderate PY stockwork.

ASSAY DATA

DDH 83-47

SAMPLE NUMBER	FOOTAGE			ASSAYS		
	From	To	Length	Zn%	Pb%	Ag oz/t
48201	924.5	929.5	5	.42	.14	.07
48202	929.5	930.3	0.8	5.26	1.44	.56
48203	930.3	934.3	4	.38	.84	.25
48204	953	959	6	2.03	.17	.31
48205	972	975	3	.33	.13	.22
48206	979	985	6	4.56	.20	.20
48207	987	995	8	.60	.12	.18
48208	995	1000	5	2.37	.10	.22
48365	1000	1008.5	8.5	1.50	.12	.19
48209	1008.5	1013.5	5	21.80	1.62	.91
48210	1013.5	1018.5	5	3.09	.45	.37
48211	1018.5	1023.5	5	.36	.08	.34
48214	1023.5	1030	6.5	.41	.15	.31
48212	1030	1035.5	5.5	4.82	1.06	.59
48213	1035.5	1040	4.5	27.20	12.10	5.12
48215	1040	1045	5	31.30	12.50	3.66
48216	1045	1050.5	5.5	22.60	8.72	3.95
48217	1050.5	1056	5.5	3.20	.78	.56
48218	1056	1061	5	.55	.04	.18
48219	1061	1066	5	1.84	.03	.16
48220	1066	1071.5	5.5	.24	.01	.11
48221	1071.5	1077	5.5	.08	.01	.07
48222	1077	1082	5	.32	.03	.14
48223	1082	1087	5	.31	.02	.08
48224	1087	1093	6	.13	.01	.07
48225	1093	1098	5	.11	.02	.06
48226	1098	1103	5	.08	.02	.04
48227	1103	1108	5	.01	.01	.03
48228	1108	1113	5	.01	.01	.04
48229	1113	1118	5	.01	.01	.01
48230	1118	1123	5	.01	.01	.02
48231	1123	1128	5	.01	.13	.27
48232	1128	1133	5	.01	.07	.15
48233	1136	1141	5	.18	.06	.13
48234	1141	1146	5	.13	.12	.09

CLEAR LAKE PROJECT

DIAMOND DRILL RECORD

Hole Number 83-47 Azimuth 270° Dip -60° Elevation 2310' Core Size NQ
 Northing 6 961 284 Easting 492 092 Picket Line Coordinates _____
 Started NOVEMBER 12, 1983 Completed NOVEMBER 20, 1983 Logged By D.R. HAWKE / T. BORSCHNECK
 Length 1278' Contractor E. CARON DIAMOND DRILLING Core Stored ON SITE Claim 3004F

Hole Objective To provide a better understanding on the distribution of high grade mineralization intersected in hole 79-20 (27'-11.3% Zn, 6.48% Pb, 2.3oz/t Ag), and also to possibly determine if there is a trend to this higher grade portion.

GRAPHIC LOG					LOCATION SURVEY DATA					GENERAL COMMENTS													
Scale 1" = 10'	Lithology	Mineralization	Alteration	Bedding ∠'s	Shears, fract.	Method Points	DESCRIPTIVE LOG			CORE QUALITY			ASSAYS										
							From	To	Length	% Core Recov.	% RQD.	FOOTAGE			% Zn	% Pb	Oz/T Ag	Average Grades					
0							0-25'	OVERBURDEN															
10																							
20																							
30							25'-38'	CASING - NO CORE RECOVERED.															
40	2c						38'-81'	ARGILLITE (2c) dark black argillite with many light grey fine sand bands.			38	41	3	89	-								

CLEAR LAKE PROJECT

DIAMOND DRILL RECORD

Hole Number 83-47

Logged By D. HAWKE / T. BORSCHNECK

GRAPHIC LOG

Scale	Lithology	Mineralization	Alteration	Bedding \angle 's	Shears, fract.
30	1a	Py		0°	
100					
110	1a				
120					
130	1a	Py	qtz	36°	
				70°	
140	2b			50°	

LOCATION SURVEY DATA

Method _____
 Points _____

DESCRIPTIVE LOG

SANDSTONE (1a) cont'd
 up to .4" in diameter (ave. < 1% py)
 95' few elongate blebs of pyrite up to .4"
 102'-104' core badly broken
 121'-131' sandstone becomes increasingly
 intercalated with argillite interbeds
 - lower contact is gradational
 125'-128' moderate quartz stockwork
 125' elongate Py blebs up to .8"
 127'-129' core badly broken
133'-290' ARGILLITE (2b)
 massive black argillite with a few thin parallel
 laminated sandstone bands

GENERAL COMMENTS

CORE QUALITY

FOOTAGE RUNS			% Core Recov.	% RQD
From	To	Length		

ASSAYS

FOOTAGE				% Zn	% Pb	Oz/T Ag	Average Grades
From	To	Length	Tag No.				

See Previous page								
94	104	10	56	-				
104	114	10	88	11				
114	121	7	94	6				
121	129	8	95	-				
129	133	4	100	15				
133	139	6	81	8				

CLEAR LAKE PROJECT

DIAMOND DRILL RECORD

Hole Number 83-47

Logged By D. HAWKE / T. BORSCHNECK

GRAPHIC LOG

Scale	Lithology	Mineralization	Alteration	Bedding \angle 's	Shears, fract.
140	2b				10°
150					15°
160	2b	qtz			58°
170	2b				5°
180					5°
190	2b				

LOCATION SURVEY DATA

Method _____
 Points _____

DESCRIPTIVE LOG

ARGILLITE (2b) cont'd

146'-148' core badly broken

160'-166' weak to moderate quartz stockwork

170'-172' core badly broken, some gouge

172'-175' weak to moderate quartz stockwork

176' cross bedding in sandstone indicates tops down the hole, bedding 50° to core axis

183'-189' weak quartz stockworks

185' few small blebs of py up to .2" diam.

GENERAL COMMENTS

CORE QUALITY

FOOTAGE RUNS			% Core Recov.	% RQD.
From	To	Length		
139	148	9	87	7
148	158	10	100	41
158	163	5	100	8
163	169	6	88	25
169	173	4	100	27
173	179	6	69	13
179	183	4	100	46
183	190	7	100	27

ASSAYS

FOOTAGE				% Zn	% Pb	Oz/T Ag	Average Grades
From	To	Length	Tag No.				

CLEAR LAKE PROJECT

DIAMOND DRILL RECORD

Hole Number 83-47

Logged By D. HAWKE / T. BORSCHNECK

GRAPHIC LOG					LOCATION SURVEY DATA					GENERAL COMMENTS									
Scale	Lithology	Mineralization	Alteration	Bedding \angle 's	Shears, fract.	Method		CORE QUALITY			ASSAYS								
						Points		FOOTAGE RUNS		% Core Recov.	% RQD.	FOOTAGE			% Zn	% Pb	Oz/T Ag	Average Grades	
DESCRIPTIVE LOG						From	To	Length			From	To	Length	Tag No.					
190	2b					ARGILLITE (2b) cont'd													
200	2b		qtz	25°		190	197.5	7.5	90	32									
			qtz	20°		199'-201' strong quartz stockwork													
210	2b					197.5	203	5.5	100	26									
						203	210	7	100	27									
220	2b		qtz			210	220	10	94	53									
						219'-220' core badly broken													
						220'-222' strong quartz stockwork													
						225' contains a few rounded blebs of pyrite up to .8" across													
230	2b					220	226	6	86	18									
						225' contains a few rounded blebs of pyrite up to .8" across													
						226	236	10	100	49									
						230'-235' argillite is sandy; contains a few scattered small (1-2mm) blebs of pyrite (1%)													
240	2b					See following page.													

CLEAR LAKE PROJECT

DIAMOND DRILL RECORD

Hole Number 83-47

Logged By D. HAWKE / T. BORSCHNECK

GRAPHIC LOG					LOCATION SURVEY DATA					GENERAL COMMENTS									
Scale	Lithology	Mineralization	Alteration	Bedding \angle 's	Shears, fract.	Method		Points		CORE QUALITY					ASSAYS				
						From	To	Length	% Core Recov.	% RQD	From	To	Length	Tag No.	% Zn	% Pb	Oz/T Ag	Average Grades	
DESCRIPTIVE LOG																			
340	2c									<u>ARGILLITE (2c) cont'd-</u>									
350	2c			30°						340 - 354 small intercalated sand bands becoming more common.									
360	1a/1b			30°						<u>354' - 366' SANDSTONE (1a/1b)</u>									
										dark grey massive to thinly laminated sandstone with 4% disseminated Py as small (2.1"-2") irregular blebs									
	1a/1b									355' cross bedding indicates tops down hole, bedding 30° to ca.									
370	2b			15°						<u>366' - 544' ARGILLITE (2b)</u>									
										dark grey-black, massive argillite with minor interbedded parallel laminated sandstone beds.									
380	2b									375'-376' contains a few rounded pyrite blebs (4.1"-4" diameter)									
										386'-387' zone of gouge and broken core									
390	2b			35°															

CLEAR LAKE PROJECT

DIAMOND DRILL RECORD

Hole Number 83-47

Logged By D. HAWKE / T. BORSCHNECK

GRAPHIC LOG

LOCATION SURVEY DATA

GENERAL COMMENTS

Method _____
Points _____

Scale
Lithology
Mineralization
Alteration
Bedding \angle 's
Shears, fract.

DESCRIPTIVE LOG

CORE QUALITY

ASSAYS

FOOTAGE RUNS

%
Core
Recov.

%
RQD.

FOOTAGE

%
Zn

%
Pb

Oz/T
Ag

Average
Grades

From

To

Length

%
Core
Recov.

%
RQD.

From

To

Length

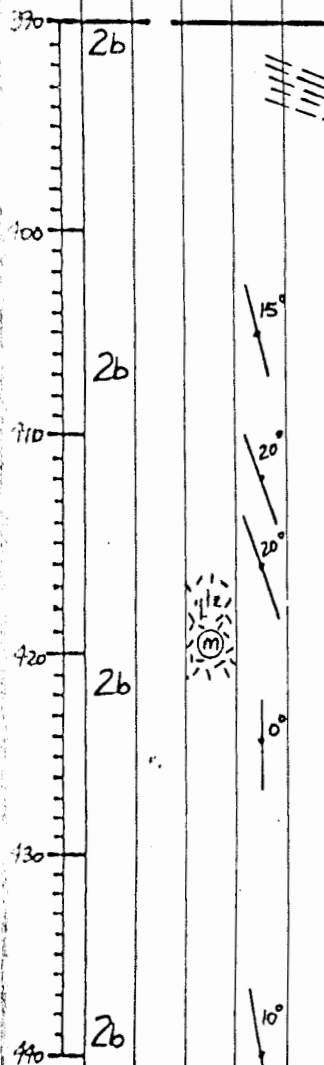
Tag
No.

%
Zn

%
Pb

Oz/T
Ag

Average
Grades



ARGILLITE (2b) cont'd

391' possible load casts indicate tops
down the hole.

392'-394' core badly broken

415'-427' massive to laminated sandstone and
sandy argillite.

417'-421' moderate quartz stockwork

See Previous page

392 397 5 73 -

397 406 9 100 33

406 413 7 100 24

413 423.5 10.5 100 56

423.5 434 10.5 100 37

434 444 10 94 56

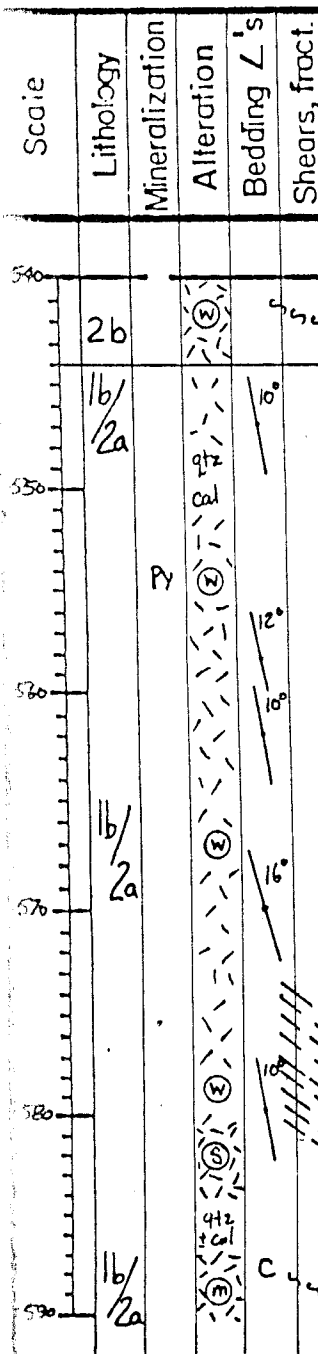
CLEAR LAKE PROJECT

DIAMOND DRILL RECORD

Hole Number 83-47

Logged By D. HAWKE / T. BORSCHNECK

GRAPHIC LOG



LOCATION SURVEY DATA

Method _____
 Points _____

DESCRIPTIVE LOG

ARGILLITE (2b) cont'd
 541'-542' black gouge, fault.

544'-602' SANDSTONE (1b)/ARGILLITE (2a)
 dark grey black, medium to coarse grained, laminated to massive sandstone with interbedded black argillite (beds up to 2' intersection), ave <1% (up to 15%) Py blebs and nodules.

544-582 very weak quartz-calcite stockwork
 550-551 local folding of sandstone laminae, minor calcite veining in core of fold; fold axis ~70° to core axis
 554' 15% Py nodules (up to 1.2" across) and irregular Py masses (up to 2.4" across).
 574-581' core fairly broken up.

582'-584' strong quartz calcite stockwork
 587'-594' laminae are contorted and folded moderate quartz = calcite stockwork
 588'-589' core broken up, gouge, fault zone

GENERAL COMMENTS

CORE QUALITY

FOOTAGE RUNS			% Core Recov.	% RQD
From	To	Length		
537	547	10	100	37
547	557	10	93	46
557	566	9	100	21
566	573	7	100	30
573	581	8	100	5
581	589	8	100	34
see following page				

ASSAYS

FOOTAGE				% Zn	% Pb	Oz/T Ag	Average Grades
From	To	Length	Tag No.				

CLEAR LAKE PROJECT

DIAMOND DRILL RECORD

Hole Number 83-47

Logged By D. HAWKE / T. BORSCHNECK

GRAPHIC LOG				LOCATION SURVEY DATA				GENERAL COMMENTS											
Scale	Lithology	Mineralization	Alteration	Bedding \angle 's	Shears, fract.	Method	Points	CORE QUALITY					ASSAYS						
								FOOTAGE RUNS			% Core Recov.	% RQD	FOOTAGE			% Zn	% Pb	Oz/T Ag	Average Grades
			From	To	Length	From	To	Length	Tag No.										
DESCRIPTIVE LOG																			
590	1b/2a			30°				<u>SANDSTONE/ARGILLITE (1b/2a) cont'd.</u>											
								589	597	8	92	42							
								591'-593' sandstone is quite siliceous											
600	1b/2a			30°				597	601	4	100	33							
								598'-602' weak to moderate quartz \pm calcite stockwork											
610	2b			12° 30°				601	612	11	99	39							
								602'-710' <u>ARGILLITE (2b)</u>											
								minor sand bands and rare cherty bands in massive grey black argillite; <1% fractured PY blebs (up to 1/6" across); trace red brown disseminated sphalerite associated with PY blebs.											
620	2b			10°				612	620	8	96	75							
								606'-607' core broken and very graphitic, fault											
630				5°				620	631	11	100	61							
640	2b sph			12°				631	641.5	10.5	100	76							
				25°				640' 1% disseminated red brown sphalerite along margin of a fractured PY bleb (.6" across)											

CLEAR LAKE PROJECT

DIAMOND DRILL RECORD

Hole Number 83-47

Logged By D. HAWKE / T. BORSCHNECK

GRAPHIC LOG					LOCATION SURVEY DATA					GENERAL COMMENTS														
Scale	Lithology	Mineralization	Alteration	Bedding \angle 's	Shears, fract.	Method		DESCRIPTIVE LOG			CORE QUALITY					ASSAYS								
						Points		From	To	Length	% Core Recov.	% RQD	FOOTAGE			% Zn	% Pb	Oz/T Ag	Average Grades					
	2b			22°				693'	696'	10'	100%	59%												
				21°				701'	708'	10'	100%	60%												
	2b			22°				703'	710'	8'	92%	33%												
	2c	Py						710'-861'	714'	10'	100%	53%												
		Py						714', 717'	724'	10'	97%	53%												
	2c							731'	734'	10'	97%	53%												
		Py		21°				734-740	738'	4'	100%	8%												
	2c							738'-742'	core broken, sheared?				See following page											

CLEAR LAKE PROJECT

DIAMOND DRILL RECORD

Hole Number 83-47

Logged By D. HAWKE / T. BORSCHNECK

GRAPHIC LOG

LOCATION SURVEY DATA

GENERAL COMMENTS

Scale	Lithology	Mineralization	Alteration	Bedding L's	Shears, fract.
740	2c				
750		py			
760	2c				
770					
780					
790	2c				

Method _____
 Points _____

DESCRIPTIVE LOG

ARGILLITE (2c) cont'd.

749'-751' medium to coarse grained parallel laminated sandstone bed.

751' py nodule

754' contorted bedding

758'-760' fault/shear zone

784'-786' quartz carbonate vein

785'-788' fault/shear zone

CORE QUALITY					ASSAYS							
FOOTAGE RUNS			% Core Recov.	% RQD	FOOTAGE				% Zn	% Pb	Oz/T Ag	Average Grades
From	To	Length			From	To	Length	Tag No.				
738	742	4	100	-								
742	749	7	67	23								
749	758	9	100	66								
758	766	8	99	24								
766	772	6	100	42								
772	779	7	95	15								
779	781	2	100	-								
781	784.5	3.5	100	36								
784.5	785.5	1	25	-								
785.5	786	0.5	100	-								
786	790	4	100	67								

CLEAR LAKE PROJECT

DIAMOND DRILL RECORD

Hole Number 83-47

Logged By D. HAWKE/T. BORSCHNECK

GRAPHIC LOG

Scale	Lithology	Mineralization	Alteration	Bedding \angle 's	Shears, fract.
790	2c		(W)		
		Py		15°	
800			qtz g/b		
	2c		(W)		
810					
				20°	
820	2c	Py	(W)		
			qtz g/b		
830			(W)		
	2c		(W)		
840					

LOCATION SURVEY DATA

Method _____
 Points _____

DESCRIPTIVE LOG

ARGILLITE (2c) cont'd

790'-793' weak quartz carbonate stockwork

796 pyrite nodule

801'-806' weak to moderate quartz carbonate stockwork

815'-840' shear/fault zone

816'-848' moderate to strong quartz carbonate stockwork

821' pyrite nodule

GENERAL COMMENTS

CORE QUALITY

FOOTAGE RUNS			% Core Recov.	% RQD	ASSAYS			% Zn	% Pb	Oz/T Ag	Average Grades
From	To	Length			FOOTAGE						
					From	To	Length	Tag No.			
790	800	10	100	48							
800	810	10	100	74							
810	820	10	100	69							
820	830	10	86	32							
830	840	10	100	36							

CLEAR LAKE PROJECT

DIAMOND DRILL RECORD

Hole Number 83-47

Logged By D. HAWKE / T. BORSCHNECK

GRAPHIC LOG					LOCATION SURVEY DATA					GENERAL COMMENTS													
Scale	Lithology	Mineralization	Alteration	Bedding \angle 's	Shears, fract.	Method					CORE QUALITY					ASSAYS							
						Points					FOOTAGE RUNS			% Core Recov.	% RQD	FOOTAGE			% Zn	% Pb	Oz/T Ag	Average Grades	
						DESCRIPTIVE LOG					From	To	Length			From	To	Length	Tag No.				
870	Ktf					890'-897.5' <u>FELSITE (KTF)</u> pale cream colored felsite with slight greenish tinge, contains euhedral to subhedral feldspars (~.1" diameter, 10-15% by vol.)					889	898	9	75	37								
300		2b					897.5'-908' <u>ARGILLITE (2b)</u> sand banded argillite with mod. qtz cal. stock work 907' pyrite band 1/8" thick					898	906.5	8.5	100	12							
	2b										906.5	908	1.5	100	22								
90	2e			55°		908'-915' <u>ARGILLITE (2e)</u> argillite with thinly laminated, light grey, calcareous bands.					908	918	10	88	28								
	5					915'-917' <u>LAPILLI TUFF (5)</u> tabular grey clasts (to 1.4" long) occur in a dark grey carbonaceous argillite matrix. Some large clasts contain dark grey argillite fragments.					918	928	10	66	34								
920	6			53°		917'-934' <u>TUFF (6)</u> - finer grained equivalent of above unit - laminated 915'-932' may be graded.										924.5	929.5	5	48201	0.42	0.14	0.07	
																929.5	930.3	0.8	48202	5.26	1.44	.56	
930	6										928	938	10	88	39	930.3	934.3	4	48203	0.38	0.84	0.25	
	2b					928.5' sphalerite																	
940	2b					929.5'-932' pale orange coarse grained aggregates of sphalerite, plus py and galena					See following page												

CLEAR LAKE PROJECT

DIAMOND DRILL RECORD

Hole Number 83-47

Logged By D. HAWKE / T. BORSCHNECK

GRAPHIC LOG

Scale	Lithology	Mineralization	Alteration	Bedding L's	Shears, fract.
740	2b	(3)			
	62	(S)			
750	2b	(S)			
	5	(S)			
760	2d	(W)			
770	A	(W)			
	2b/4	(W)			
780	5/6	(W)			
790					

LOCATION SURVEY DATA

Method _____
 Points _____

GENERAL COMMENTS

DESCRIPTIVE LOG

TUFF (6) cont'd
 932'-934' 30% massive pyrite
 934'-953' ARGILLITE (2b)
 940'-953' mod to strong Py stockwork, argillite
 is weakly siliceous.
 947' 3" tuff band
 953'-959' LAPILLI TUFF (5)
 light grey, fragmental, siliceous lapilli tuff with
 irregular masses and stringers of coarse
 grained pyrite (some fragments?) = strong
 stockwork
 955'-958' disseminated sphalerite
 959'-969.5' ARGILLITE (2d)
 cherty argillite with weak to moderate
 pyrite stockwork
 969.5'-971.5' MASSIVE SULPHIDE (A)
 massive pyrite band.
 971.5'-983' ARGILLITE/CHERT (2b/4)
 siliceous argillite and chert with
 pyrite stockwork (weak to moderate)
 983'-990' LAPILLI TUFF/TUFF (5/6)
 grades downhole from lapilli tuff to tuff, weak Py stockwork.

CORE QUALITY

FOOTAGE RUNS			% Core Recov.	% RQD.
From	To	Length		

ASSAYS

FOOTAGE				% Zn	% Pb	Oz/T Ag	Average Grades
From	To	Length	Tag No.				

938	948	10		100	57							
948	953	5		72	3							
953	963	10		90	81	953	959	6	48204	2.03	0.17	0.31
963	974.5	11.5		87	78							
	972	975	3			972	975	3	48205	0.33	0.13	0.22
974.5	984	9.5		81	64							
	979	985	6			979	985	6	48206	4.56	0.20	0.20
984	994.5	10.5		98	64							
	987	995	8			987	995	8	48207	0.60	0.12	0.18

CLEAR LAKE PROJECT

DIAMOND DRILL RECORD

Hole Number 83-47

Logged By D. HAWKE / T. BORSCHNECK

GRAPHIC LOG

Scale	Lithology	Mineralization	Alteration	Bedding L's	Shears, fract.
1040 1050 1060 1070 1080 1090	A Sph gal Sph gal Sph gal Sph A A A				

LOCATION SURVEY DATA

Method _____
Points _____

DESCRIPTIVE LOG

MASSIVE SULPHIDE (A) cont'd.

1044' carbonate vug filling

1057'-1060' fault zone; contains milled carbonate and sulphide fragments.

1080'-1082' chert fragments and vug fillings.

GENERAL COMMENTS

CORE QUALITY					ASSAYS							
FOOTAGE RUNS			% Core Recov.	% RQD.	FOOTAGE			Tag No.	% Zn	% Pb	Oz/T Ag	Average Grades
From	To	Length			From	To	Length					
1040	1050.5	10.5	94	82	1040	1045	5	48215	31.30	12.50	3.66	From 1030'
1045	1050.5	5.5			1045	1050.5	5.5	48216	22.60	8.72	3.95	To 1056'
1050.5	1061	10.5	95	83	1050.5	1056	5.5	48217	3.20	0.78	0.56	(26')
1056	1061	5			1056	1061	5	48218	0.55	0.04	0.18	Zn 17.20%
1061	1071.5	10.5	100	74	1061	1066	5	48219	1.84	0.03	0.16	Pb 6.73%
1066	1071.5	5.5			1066	1071.5	5.5	48220	0.24	0.01	0.11	Ag 2.67%
1071.5	1082	10.5	100	75	1071.5	1077	5.5	48221	0.08	0.01	0.07	
1077	1082	5			1077	1082	5	48222	0.32	0.03	0.14	
1082	1093	11	98	98	1082	1087	5	48223	0.31	0.02	0.08	
1087	1093	6			1087	1093	6	48224	0.13	0.01	0.07	

CLEAR LAKE PROJECT

DIAMOND DRILL RECORD

Hole Number 83-47

Logged By D. HAWKE / T. BORSCHNECK

GRAPHIC LOG						LOCATION SURVEY DATA						GENERAL COMMENTS									
Scale	Lithology	Mineralization	Alteration	Bedding L's	Shears, fract.	Method		CORE QUALITY				ASSAYS									
						Points	Points	FOOTAGE RUNS			% Core Recov.	% RQD.	FOOTAGE			% Zn	% Pb	Oz/T Ag	Average Grades		
DESCRIPTIVE LOG						From	To	Length			From	To	Length	Tag No.							
A						MASSIVE SULPHIDE (A) cont'd															
						See Previous page															
						1093	1094.5	1.5	83	39											
						1094.5	1105.5	11	99	62	1093	1098	5	48225	0.11	0.02	0.06				
2d						1102'-1126' ARGILLITE (2d)															
						medium to pale grey cherty argillite, has fragmented appearance and is cut by numerous Pyrite and carbonate stringers and local masses of Py up to 2' long. local sections with coarse white sparry carbonate.															
						1105.5	1116	10.5	100	87	1098	1103	5	48226	0.08	0.02	0.04				
2d						1108-1113															
						1108	1113	5	48228	0.01	0.01	0.04	1103	1108	5	48227	0.01	0.01	0.03		
2d						1113-1118															
						1113	1118	5	48229	0.01	0.01	0.01	1108	1113	5	48228	0.01	0.01	0.04		
2d						1118-1123															
						1116	1126	10	100	54	1113	1118	5	48229	0.01	0.01	0.01				
A						1126'-1132' MASSIVE SULPHIDE (A)															
						massive pyrite															
						1126	1130	4	92	10	1118	1123	5	48230	0.01	0.01	0.02				
						1130	1132	2	100	21	1123	1128	5	48231	0.01	0.13	0.27				
2b						1132'-1136' ARGILLITE (2b)															
						sheared and locally siliceous argillite.															
						1132	1140	8	84	29	1128	1133	5	48232	0.01	0.07	0.15				
A						1136'-1142' MASSIVE SULPHIDE (A)															
						massive pyrite															
											1136	1141	5	48233	0.18	0.06	0.13				

CLEAR LAKE PROJECT

DIAMOND DRILL RECORD

Hole Number 83-47

Logged By D. HAWKE / T. BORSCHNECK

GRAPHIC LOG						LOCATION SURVEY DATA				GENERAL COMMENTS									
Scale	Lithology	Mineralization	Alteration	Bedding \angle 's	Shears, fract.	Method Points				CORE QUALITY			ASSAYS						
						FOOTAGE RUNS			% Core Recov.	% RQD	FOOTAGE			% Zn	% Pb	Oz/T Ag	Average Grades		
From	To	Length	From	To	Length	Tag No.													
DESCRIPTIVE LOG																			
1140	A					<u>MASSIVE SULPHIDE (A) cont'd.</u>				See Previous page									
1140	2b					1142'-1278'	ARGILLITE (2b)	1140	1149	9	100	67	1141	1146	5	48234	0.13	0.12	0.09
1142'-1149' minor sand/silt bands, moderate PY and quartz-carbonate stockwork. bedding is contorted.																			
1149'-1157' shear/fault zone contains sections of broken up quartz carbonate veins																			
1160	2b					1162'-1169'	sheared zone as above.	1158	1168	10	100	10							
quartz carbonate stringers rare throughout.																			
1180	2b					1179'-1181'	fault/shear zone	1178	1188	10	100	43							
1190	2b									See following page									

CLEAR LAKE PROJECT

DIAMOND DRILL RECORD

Hole Number 83-47

Logged By D. HAWKE / T. BORSCHNECK

GRAPHIC LOG

LOCATION SURVEY DATA

GENERAL COMMENTS

Method _____
Points _____

DESCRIPTIVE LOG

CORE QUALITY

ASSAYS

Scale	Lithology	Mineralization	Alteration	Bedding \angle 's	Shears, fract.
1190	2b				
1200		sp			5°
1210	2b				
1220					
1230	2b				
1240	2b				5°

ARGILLITE (2b) cont'd

1195'-1200' sheared section

1195'-1205' moderate quartz carbonate stockwork

1202.25' pale sphalerite in irregular stringers over 4'

1212'-1218' sheared section

1218'-1223' weak quartz carbonate stockwork.

1229'-1232' weak quartz carbonate stockwork

1237'-1240' weak quartz carbonate stockwork.

FOOTAGE RUNS					ASSAYS						
From	To	Length	% Core Recov.	% RQD.	FOOTAGE.			% Zn	% Pb	Oz/T Ag	Average Grades
					From	To	Length				
1188	1195	7	100	7							
1195	1202	7	100	35							
1202	1206	4	85	8							
1206	1210	4	100	-							
1210	1213	3	89	-							
1213	1218	5	22	-							
1218	1226	8	100	9							
1226	1231	5	95	-							
1231	1238	7	100	6							
See following page											

CLEAR LAKE PROJECT

DIAMOND DRILL RECORD

Hole Number 83-17

Logged By D. HAWKE / T. BORSCHNECK

GRAPHIC LOG

LOCATION SURVEY DATA
 Method Sperry Sun Magnetic Single Shot
 Points 1253' dip -59° azimuth 271°

GENERAL COMMENTS

Scale	Lithology	Mineralization	Alteration	Bedding \angle 's	Shears, fract.
1250	2b				
1260	2b			27° 15°	
1270	2b			20°	
1278	2b				

DESCRIPTIVE LOG

ARGILLITE (2b) cont'd

1255'-1260' weak quartz carbonate stockwork

1255' pyrite nodule

1258' pyrite nodule

1264'-1271' weak quartz carbonate stockwork

END OF HOLE

1278'

CORE QUALITY

FOOTAGE RUNS			% Core Recov.	% RQD
From	To	Length		

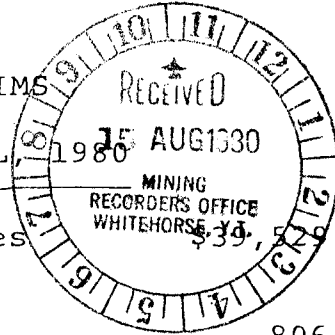
ASSAYS

FOOTAGE				% Zn	% Pb	Oz/T Ag	Average Grades
From	To	Length	Tag No.				

1238	1246	8	100	7			
1246	1252	6	85	22			
1252	1258	6	100	17			
1258	1264	6	93	25			
1264	1269	5	100	32			
1269	1278	9	86	11			

TOTAL RECOVERY: 97.3%
 TOTAL RQD: 40.0%

LINE-CUTTING EXPENDITURES
 ON MACMILLAN J.V.'s SUE CLAIMS
 ON 105L-14 DURING MARCH AND APRIL, 1980



1. Ketz Enterprises line-cutting invoices	\$39,529.00	
2. Nahanni Air Services		806.00
3. Air North invoices	95.19 328.24 561.35 780.00 194.50 3,244.00 780.00 <u>247.00</u>	
	6,230.28	6,230.00
4. Trans-North Turbo - more line cutting crew		650.00
5. Stirling Expeditors - purchase fule and Finning parts		901.00
6. Mary Reddoch Expediting		214.00
7. Finning Tractor parts and repair		41.00
TOTAL LINE-CUTTING EXPENDITURES		<u>\$48,371.00</u>

C. D. Selous

GETTY MINES, LIMITED

KETZA ENTERPRISES LTD.

ROSS RIVER
YUKON, Y0B 1S0

Phone [403] 969-2237
Telex 036-8-317

Entity	
BLAKE S. MACDONALD, Pres.	
APR 14 1980	
FILE	

March 31st, 1980

INVOICE

TO: Getty Mines Limited,
 604 - 750 W. Pender St.,
 Vancouver, B.C. V6C 2T7

Attention: Mr. D.A. Silversides

RE: Linecutting contract, your no. 14759
 Progress invoice to 31/3/80

	38.88 miles cut @ \$575/mile	\$22,356.00
<i>Linecutting</i>	2 man days repicketing @ \$100/man ..	200.00
<i>\$ 24,401</i>	Payroll as follows:	
	P. Hayduck, 123 hrs. @ \$15/hr (catskipper)	1,845.00
	R. DiPietro, rodman, 12 days @	
	\$68.75/day	825.00
<i>gravity</i>	K. Brumm, rodman, 12 days @ \$68.75/day	825.00
<i>survey = 2662.50</i>	D. Cherry, helper, 9 days @ \$56.25/day	506.25
	R. Cherry, helper, 9 days @ \$56.25/day	506.25
<i>for gravity crew</i>	Meals as per attached sheet, 109.33	
	man days @ \$27/man day	<u>2,951.91</u>
<i>Total gravity \$ 5614.41</i>		
	TOTAL	\$30,015.41 ✓

GETZA ENTERPRISES LIMITED

For the approval or payment:

H. A. Silversides

Charge expense element:

11W-1-3-811-325-10-5000 = 27352-91

11W-1-3-811-323-10-5000 = 2662-50

Charge Project:

Total. 30,015-41

invoice no: K130-80

Wire A.S.A.P. to:

BANK OF NOVA SCOTIA-Whitehorse
Ketza Enterprises
Account # 925-17

APR 15 1980

KETZA ENTERPRISES LTD.

ROSS RIVER
YUKON, Y0B 1S0

Phone [403] 969-2237
Telex 036-8-317

BLAKE S. MACDONALD, Pres.

April 17th, 1980

INVOICE

TO: Getty Mines Limited,
504 - 750 W. Pender St.,
Vancouver, B.C. V6C 2T7

Attention: Mr. D.A. Silversides

RE: Your contract number 14759
Linecutting, Clear Lake area

<i>linecutting & charge = 15,128.00</i>	118 SUE claims tagged @ \$23/claim	\$2,714.00
	20.36 cut miles, 4 W Grid @ \$575/mi.	11,707.00
	3.95 cut miles, 5 W Grid @ \$575/mi.	3,421.25
<i>gravity chge = 3750.00</i>	Payroll to April 15th, 1980	
	15 days x 2 hodmen @ \$60.75/day/man	2,062.50
	15 days x 2 helpers @ \$56.25/day/man	1,687.50
<i>gravity crew</i>	Meals and camp:	
	119 man days @ \$27/man/day	<u>3,213.00</u>
	TOTAL	<u>24,805.25</u>
<i>total gravity = 6963.00</i>	LESS ADVANCE.....	<u>15,000.00</u>
	TOTAL DUE:	<u>9,805.25</u>

APR 31 1980

invoice no: K133-00

*linecutting contract price included
linecutters supplying saw camp etc*

W-1-3-811-325-10-5000



NAHANNI AIR SERVICES LTD.

BOX 123, NORMAN WELLS, N.W.T. X0E 0V0

TELEPHONE: (403) 587-2288

TELEX 034-46537

INVOICE NO.

7198

DATE	April 18, 80
AIRCRAFT TYPE	Proter
AIRCRAFT REGISTRATION	C-F212
CHARTERED BY	Getty Mines Ltd.

FROM	MILES	HOURS	CARGO	NO. PASSE	PASSENGER/REMARKS
Ross River					
Clear NK	106				4 100/30
Ross River	106				
Clear NK	106				4 100/30
Ross River	106				

SPECIAL INSTRUCTIONS
 Core out
 line-cutters
 & camp

HOURS	PER HOUR	
424	1.90	\$805.60 ✓
MILES	PER MILE	
WAITING TIME	PER HOUR	
EXTRA LANDINGS	PER LANDING	
MINIMUM CHARTER		
OTHER		
CASH	CHARGE	TOTAL INVOICE
	V	806.00

J. Macdonald
 CHARTERER'S AUTHORIZATION

PILOT
WR1647

Macmillan J.V.
 Air Charter - 301.
 O.K. - H.A. Schwartz.

Air North Charter and Training Ltd.

24 Hour Telephone Service 668-2228
 Box 4998, Whitehorse, Yukon, Y1A 4S2

PHONE 668-2228

AIRCRAFT CHARTER

INVOICE 5451

DATE March 18, 1980

Getty Mines
 Suite 604
 750 W. Pender St.
 Vancouver, B.C.

DESCRIPTION	AMOUNT
Re: Charter Cessna 172	
Pilot: T. McGillvary	
Flying 290 miles @ .65/mile	188. 50
Fuel Surcharge	58. 50
	247. 00
GETTY MINES, LIMITED	
Invoice approved for payment:	
Charge expense element:	
MacMillan JV 301	
Charge Project:	

Macmillan JV 301

A SERVICE CHARGE OF 2 PER CENT PER MONTH ADDED TO ACCOUNTS OVER 30 DAYS

STAR PRINTING WHITEH

Air North Charter and Training Ltd.

CHARTER TICKET
 5451

24 Hour Telephone Service 668-2228
 Box 4998, Whitehorse, Yukon, Y1A 4S2

AC C-655L DATE March 18/80

NAME Getty Mines

ADDRESS _____

From	Miles	Hours	Cargo	Passenger	Remarks
xy					
To <u>Convent</u>	145				<u>Cargo supplies & cut parts.</u>
xy	145				
Special Instructions					
				at	Per Hour
290				at <u>.65</u>	Per Mile
				at	Per Hour
Waiting Time				at	Per Hour
Extra Landings				at	Per Landing
Other <u>Fuel Surcharge</u>					58.50
TOTAL CHARGES					#247.00

T. McGillvary
 Pilot's Signature

xy
 Base

Verd. Blaha
 Charterer's Authorization

Air North Charter and Training Ltd.

24 Hour Telephone Service 668-2228
Box 4998, Whitehorse, Yukon, Y1A 4S2

CHARTER TICKET
5381

Air North Charter and Training Ltd.

24 Hour Telephone Service 668-2228
Box 4998, Whitehorse, Yukon, Y1A 4S2

PHONE 668-2228

AC ATU-6 KMS DATE March 19/80

NAME GETTY'S MINES

ADDRESS _____

AIRCRAFT CHARTER

INVOICE 5381

DATE March 19, 1980

Getty Mines
Suite 604 - 750 W. Pender
Vancouver, B.C.

From	Miles	Hours	Cargo	Passenger-Remarks
CONWEST	145			5 PAX
ROSS R.	105			1 PAX
CONWEST	195			3 PAX
WASE	115			
Special Instructions	at Per Hour			
	500 MILES at 1.50 Per Mile		750.00	
	Waiting Time at Per Hour			
	Extra Landings at Per Landing			
Other	Fuel Surcharge 100 gals @ 0.30		30.00	
TOTAL CHARGES			\$780.00	

DESCRIPTION	AMOUNT
Re: Charter Islander	
Pilot: M. Roberge	
Flying 500 miles @ 1.50/mile	750.00
Fuel Surcharge 100 gals @ .30/gal.	30.00
	780.00
<p>GETTY MINES, LIMITED</p> <p>Invoice approved for payment:</p> <p><i>[Signature]</i></p> <p>Charge expense element:</p> <p><u>MACMILLAN I.V. 301.</u></p> <p>Charge Project: _____</p>	

[Signature] Pilot's Signature
 X4 Base
[Signature] Charterer's Authorization

A SERVICE CHARGE OF 2 PER CENT PER MONTH ADDED TO ACCOUNTS OVER 30 DAYS

STAR PRINTING WHITEHORSE

Air North Charter and Training Ltd.

24 Hour Telephone Service 668-2228
Box 4998, Whitehorse, Yukon, Y1A 4S2

CHARTER TICKET
5363

IC CF-000 DATE Mar 12/80

NAME Getty Mines

ADDRESS _____

Mode	Miles	Hours	Cargo	Passenger-Remarks
Conwest	105			4 pax & gear
R	105			o
Conwest	105			2 pax & gear
RR	105			o
Conwest	105			5 pax & gear
YXY	145			o

Special Instructions	at	Per Hour		
670	at 2.00	Per Mile	1370	00
Waiting Time	at	Per Hour		
Extra Landings	at	Per Landing		
Fuel surcharge Other 200 gal @ .45 gal			90	00
TOTAL CHARGES			1430	00

Pilot's Signature [Signature] Base x4 Charterer's Authorization [Signature]

Air North Charter and Training Ltd.

24 Hour Telephone Service 668-2228
Box 4998, Whitehorse, Yukon, Y1A 4S2

MacMillan J.V.
Air Charter - 301
OK - L.A. Sports

GETTY MINES, LIMITED

Invoice approved for payment:
[Signature]

PHONE 668-2228

AIRCRAFT CHARTER _____

INVOICE 5362 Charge expense element: _____ DATE March 13, 1980

Getty Mines MacMillan JV 301
Suite 604
750 W. Pender
Vancouver, B.C.

DESCRIPTION	AMOUNT
Re: Charter Otter March 11, 1980	
Pilot: R. Neilsen	
Flying 880 miles @ 2.00/mile	1,760.00
Fuel Surcharge 120 gals @ .45/gal.	54.00
	<u>1,814.00</u>
Re: Charter Otter March 12, 1980	
Pilot: R. Neilsen	
Flying 670 miles @ 2.00/mile	1,340.00
Fuel Surcharge 200 gals @ .45/gal.	90.00
	<u>1,430.00</u>
fuel haul & maintenance Grand Total	<u>3,244.00</u>

A SERVICE CHARGE OF 2 PER CENT PER MONTH ADDED TO ACCOUNTS OVER 30 DAYS

Air North Charter and Training Ltd.

24 Hour Telephone Service 668-2228
Box 4998, Whitehorse, Yukon, Y1A 4S2

CHARTER TICKET
5382

AC BN-6 K.M.J DATE March 15/80
NAME GETTY MINES

ADDRESS _____

From	Miles	Hours	Cargo	Passenger-Remarks
WHEE.				
WHEE.	145		5 SKI TOGS + 300 LBS	
WHEE.	105			
WHEE.	105		5 SKI TOGS + 300 LBS	
WHEE.	145			

Special Instructions	at	Per Hour	
5000 MILES	at 1.50	Per Mile	750.00
Waiting Time	at	Per Hour	
Extra Landings	at	Per Landing	
Other Fuel Surcharge 100 gals @ .30			30.00
TOTAL CHARGES			1173.00

M. Roberge Pilot's Signature Wheo. Base [Signature] Charterer's Authorization

Macmillan J.V.
Air charter - 301.
OK H.Q. [Signature]

Air North Charter and Training Ltd.

24 Hour Telephone Service 668-2228
Box 4998, Whitehorse, Yukon, Y1A 4S2

PHONE 668-2228

AIRCRAFT CHARTER

INVOICE 5382

DATE March 15, 1980

Getty Mines
Suite 604
750 W. Pender St.
Vancouver, B.C.

DESCRIPTION	AMOUNT
Re: Charter Islander	
Pilot: M. Roberge	
Flying 500 miles @ 1.50/mile	750.00
Fuel Surcharge 100 gals. @ .30/gal.	30.00
	<u>780.00</u>
GETTY MINES, LIMITED	
invoice approved for payment:	
.....	
Charge expense element:.....	
<u>MacMillan JV 301</u>	

A SERVICE CHARGE OF 2 PER CENT PER MONTH ADDED TO ACCOUNTS OVER 30 DAYS*****

STAR PRINTING WHITEHORSE

Air North Charter and Training Ltd.

24 Hour Telephone Service 668-2228
Box 4998, Whitehorse, Yukon, Y1A 4S2

Mike

CHARTER TICKET

5388

Air North Charter and Training Ltd.

24 Hour Telephone Service 668-2228
Box 4998, Whitehorse, Yukon, Y1A 4S2

PHONE 668-2228

AC CG-K145 DATE March 22/80

NAME GETTY MINES

ADDRESS _____

AIRCRAFT CHARTER

INVOICE 5388

DATE March 22, 1980

Getty Minerals Company Limited
Suite 604
750 W. Pender St.
Vancouver, B.C.

From	Miles	Hours	Cargo	Passenger-Remarks
<u>HAYO</u>				
<u>COMVEST</u>	<u>70</u>		<u>5 BARRELS FUEL</u>	
<u>ROSS R.</u>	<u>105</u>			
<u>COMVEST</u>	<u>105</u>		<u>4 P.A. Plus FUEL</u>	
<u>HAYO</u>	<u>70</u>			

DESCRIPTION	AMOUNT
Re: Charter Islander	
Pilot M. Roberge	
Flying 350 miles @ 1.50/mile	525. 00
Fuel Surcharge	36. 35
	<u>561. 35</u>
<p>GETTY MINES, LIMITED</p> <p>Invoice approved for payment:</p> <p><i>[Signature]</i></p>	
Charge expense to	
<u>MacMillan IV. 301.</u>	
Charge Project	

Special Instructions	at	Per Hour	
<u>350 MILES</u>	<u>at 1.50</u>	<u>Per Mile</u>	<u>525.00</u>
Waiting Time	at	Per Hour	
Extra Landings	at	Per Landing	
Other <u>Fuel Surcharge</u>			<u>36.35</u>
TOTAL CHARGES			<u>561.35</u>

[Signature] Pilot's Signature *[Signature]* Base *[Signature]* Charterer's Authorization

A SERVICE CHARGE OF 2 PER CENT PER MONTH ADDED TO ACCOUNTS OVER 30 DAYS

Air North Charter and Training Ltd.

24 Hour Telephone Service 668-2228
Box 4998, Whitehorse, Yukon, Y1A 4S2

PHONE 668-2228

AIRCRAFT CHARTER

INVOICE 5449

DATE April 26, 1980

George Kent
c/o Getty Minerals Ltd.
Suite 604, 750 W. Pender St.
Vancouver, B.C.

DESCRIPTION	AMOUNT
Re: Charter Cessna 206	
Pilot: J. Mahoney	
Flying 290 miles @ 1.00/mile	290.00
Fuel Surcharge 28 gals @ .30/gal.	8.40
GETTY MINES, LIMITED	298.40
Invoice approved for payment: <i>J. A. Silver</i>	
Charge expense element:..... <i>W-1-3-811-301-10-5000</i>	
Charge Project:.....	
..... <i>re gravity survey</i>	

A SERVICE CHARGE OF 2 PER CENT PER MONTH ADDED TO ACCOUNTS OVER 30 DAYS

BM

Invoice
~~POST OFFICE~~ ?

006952

THIS NUMBER MUST APPEAR ON ALL INVOICES PACKAGES ETC.

TO *Getty Mines*

ADDRESS *Suite 604-750 W. Rendon Way Vancouver B.C.*

SHIP TO _____

ADDRESS _____

REG. NO. OR F.P.T. _____

DATE *March 17/80*

FOR _____

PLEASE NOTIFY US IMMEDIATELY IF YOU ARE UNABLE TO SHIP COMPLETE ORDER BY DATE SPECIFIED

QUANTITY	PLEASE SUPPLY ITEMS LISTED BELOW	PRICE
1		
2	<i>Re: W.P. & Y.R. # 600162</i>	<i>13 85</i>
3		
4	<i>pd. by chq # 0095</i>	
5		
6	<i>Re: Fanning # B56566</i>	
7	<i>pd. by chq # 0098</i>	<i>66 34</i>
8		
9	<i>Expediting - 1 hr @ \$15.00</i>	<i>15 00</i>
10		<i>\$95 19</i>

DATE REQUIRED _____

HOW SHIP _____

PLEASE SEND _____

COPIES OF YOUR INVOICE _____

TERMS _____

PURCHASING AGENT _____

AIR NORTH
P.O. BOX 4998
WHITEHORSE, YUKON
Y1A 4S2

GETTY MINES, LIMITED

Invoice approved for payment:
H.G. Silver

Charge expense element: _____
W-1-3-811-301-10-5000

Charge Project: _____

Accounting
getty charges

Air North Charter and Training Ltd.

24 Hour Telephone Service 668-2228
Box 4998, Whitehorse, Yukon, Y1A 4S2

CHARTER TICKET
5456

Air North Charter and Training Ltd.

24 Hour Telephone Service 668-2228
Box 4998, Whitehorse, Yukon, Y1A 4S2

PHONE 668-2228

AC C-GWYU DATE Mar 22/80

NAME Getty Mines

ADDRESS _____

AIRCRAFT CHARTER

INVOICE 5456

DATE March 22, 1980

Getty Minerals Company Limited
Suite 604
750 W. Pender St.
Vancouver, B.C.

Invoices

From	Miles	Hours	Cargo	Passenger-Remarks
xy				
To <u>Char Lake</u>	<u>145</u>			<u>Frt. In</u>
<u>xy</u>	<u>145</u>			<u>1 Pax Out</u>
Special Instructions		at	Per Hour	
	<u>270</u>	at <u>\$.65</u>	Per Mile	<u>183.50</u>
Waiting Time		at	Per Hour	
Extra Landings		at	Per Landing	
Other <u>Fuel Surcharge 20 gals @ \$.30</u>				<u>6.00</u>
TOTAL CHARGES				<u>\$194.50</u>

DESCRIPTION	AMOUNT
Re: Charter Cessna 172	
Pilot: J. Healy	
Flying 290 miles @ .65/mile	188.50
Fuel Surcharge 20 gals @ .30/gal.	6.00
	<u>194.50</u>
GETTY MINES, LIMITED	
Invoice approved for payment:	
<i>[Signature]</i>	
Charge expense account:	
<u>MACMILLAN I.V. 301.</u>	
Charge Project:	

J Healy
Pilot's Signature

XY
Base

[Signature]
Charterer's Authorization

A SERVICE CHARGE OF 2 PER CENT PER MONTH ADDED TO ACCOUNTS OVER 30 DAYS

STAR PRINTING WHITEHORSE



TRANS NORTH TURBO AIR LTD.
 BOX 4336 WHITEHORSE, N.W. YIA 376

TELEPHONE (403)668-2177 TELEEX 036-8 290

Petty Mines

CHARTERER

BILLING ADDRESS

ACCOUNT NUMBER 1152

43277

INVOICE DATE 01/05/80

A/C TYPE 204B AIRCRAFT REGISTRATION C ADDL

FLIGHT DATE 17 09 80

PURCHASE ORDER NO.

FUEL & OIL-X	TANTA FUEL USED	HRS./GALS.	FROM
TNTA	CUST		
VV	JR 4	0.3	RR

FROM	MILES	HOURS	ZONE	REMARKS - NO. OF PASS - FREIGHT LBS.
RR				
TO DIO LAKE				
REECE AREA				
PICK UP E.M. CREW				
RETURN FOR RIVER	2.3	3	B	D. SILVERSIDES @ ZENT.
MACMILLAN J.D. (Crew visit)				

SUB	C.L.	AMOUNT
6106	ST0120	862.50
6106	ST110	7.98

2.3 @ 375⁰⁰ = 862.50 ✓

TERMS: EIGHTEEN PERCENT INTEREST PER ANNUM WILL BE CHARGED ON ALL INVOICES NOT PAID WITHIN 30 DAYS OF DATE ISSUED.

WAITING TIME	@	/HR.	
FUEL: 7	@	1.14 / GAL.	7.98
FUEL:	@	/ GAL.	
MEALS & LODGING			
OTHER			
OTHER			

H. Silverides
 CHARTERER'S SIGNATURE

JDW *[Signature]*
 PILOT'S SIGNATURE

XXX _____
 ENGINEER'S NAME

TOTAL \$ 870.48 ✓

FLIGHT REPORT INVOICE

1.5 hrs (650) helicopter time charged to moving line cutting crews.

STIRLING EXPEDITING SERVICES LTD.

HANGAR B
WHITEHORSE AIRPORT
[403] 668-2362

MAILING ADDRESS:
P.O. BOX 4983,
WHITEHORSE, YUKON
Y1A 4S2

ROSS RIVER
YUKON, Y0B 1S0
[403] 959-2237

April 9th, 1980

INVOICE

TO: Getty Mines Ltd.,
604 - 750 W. Pender St.,
Vancouver, B.C.

Attention: Dave Silversides

RE: Purchases for Clear Lake project as follows:

For Cat:

Finning Tractor parts	\$884
Fuel Wobble pump parts	8.80
White Pass #982865, diesel	503.79
White Pass #970947, diesel	353.28
2% carrying charges	<u>26.24</u>

TOTAL \$900.95

323
Cat Roads

PARTS SALES ORDER
PACKING SLIP

pd. Nov 19/80
#517

FINNING TRACTOR & EQUIPMENT COMPANY LIMITED

HEAD OFFICE: 555 GREAT NORTHERN WAY, VANCOUVER, B.C. V5T 1E2 • TELEPHONE (604) 872-7474



SHIP TO:
STIRLING EXP.
ROSS RIVER
YT

BR INVOICE NO.	PAGE	TYPE ACCT/JOB NO.	SFX/SEG BCH	TRAN	SALESMAN	DOCUMENT NO.
08 005081	1	1 87202		0	C. EBURNE	08 005081
FED. EXEMPT NO.	PROV. EXEMPT NO.	CUSTOMER ORDER NUMBER				
	YT					
MAKE	MODEL	SERIAL	PROD.	SHIP VIA	DATE (M-D-Y)	
CAT D3			TT	MAIL	000 031380	

QTY	ORDERED	SHIPPED	✓	CREDIT	C X	BACK ORDER	UNIT WEIGHT	LOCATION	S C	TAXES	PART NUMBER	DESCRIPTION	REFERENCE PART #	C T	O C	UNIT	EXTENDED	CR
1	2	2	✓				1.00	A04E04	OF		9L9100	ELEMENT		T	E	4.42	8.84	
<i>Cat parts</i>																		

TOTAL WEIGHT
2.0

NET	PROV. TAX	TOTAL
8.84	.00	8.84

LEGEND

"F" INDICATES FEDERAL SALES TAX IS INCLUDED
"P" INDICATES ITEM IS SUBJECT TO PROVINCIAL TAX

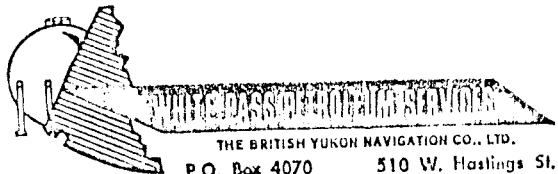
TERMS

INVOICES ARE PAYABLE BY THE 20TH OF THE MONTH FOLLOWING. A SERVICE CHARGE OF 18% PER ANNUM WILL BE CHARGED ON ALL OVERDUE AMOUNTS. MAKE CHEQUES PAYABLE AT PAR VANCOUVER, B.C.
A MINIMUM HANDLING CHARGE OF 10% WILL BE LEVIED ON ANY PARTS RETURNED AND ACCEPTED FOR CREDIT. NOT ALL PARTS PURCHASED ARE RETURNABLE.

THIS IS YOUR INVOICE

DELIVERY INVOICE NO.

982865



THE BRITISH YUKON NAVIGATION CO., LTD.
 P.O. Box 4070 510 W. Hastings St.
 Whitehorse, Yukon Vancouver 2, B.C.

STATION <i>Ross River</i>	DATE <i>Aug 15 1980</i>
SHIPPED TO	TRUCK NO.
	TRIP NO.

SOLD TO (PRINT) <i>RITA LUTHER</i>	CUSTOMER'S ORDER OR REQ. NO.
ADDRESS <i>Ross River</i>	DELIVERED BY
WP. NO.	LOC.

PRODUCTS DELIVERED	SIZE OF PACKAGE	CODE	QUANTITY	PRICE	AMOUNT
<i>SIAM OIL - 60</i>	<i>8 DR</i>		<i>225 GAL</i>	<i>1.119</i>	<i>251 77</i>
<i>TAX</i>			<i>225 GAL</i>	<i>0.009</i>	<i>2 02</i>
<i>Jetty - cart.</i>					
<i>4 diesel cart of Mayo - Jetty</i>					

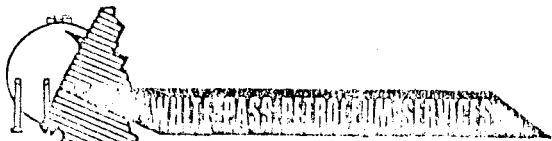
TAX (SPECIFY)	GALS. @
PRODUCTS RECEIVED	RECEIVED PAYMENT
BY <i>C. McDonald</i>	CASH _____
APPROVED _____	CHEQUES _____
CHECKED _____	EXCH. _____
	TOTAL _____
DRUM CHARGES <i>5 H. VORPAC DRUMS</i>	<i>250 00</i>
DRUM CREDITS <i>(0 50.00)</i>	<i>()</i>
TERMS - NET CASH (NO DISCOUNT)	TOTAL <i>503 79</i>

FORM PET 855 63M 73

THIS IS YOUR INVOICE

DELIVERY INVOICE NO.

970947



THE BRITISH YUKON NAVIGATION CO., LTD.
P.O. Box 4070 510 W. Hastings St.
Whithorse, Yukon Vancouver 2, B.C.

STATION <i>Mayo</i>	DATE <i>7/11/22 1980</i>
SHIPPED TO	TRUCK NO.
	TRIP NO.

SOLD TO (PRINT) <i>Sterling Expediting</i>	CUSTOMER'S ORDER OR REQ. NO. <i>68845</i>
ADDRESS	DELIVERED BY <i>J. Mutton</i>
WP. NO.	LOC.

PRODUCTS DELIVERED	SIZE OF PACKAGE	CODE	QUANTITY	PRICE	AMOUNT
<i>Arctic L.P. Diesel</i>	<i>4 Drs</i>		<i>180</i>	<i>1.256</i>	<i>226 08</i>
<i>Tax</i>			<i>180</i>	<i>.19</i>	<i>34 20</i>
<i>Regular gasoline</i>	<i>1 Dr</i>		<i>45.</i>	<i>1.324</i>	<i>59 58</i>
<i>Tax</i>			<i>45.</i>	<i>.145</i>	<i>6 53</i>

MAYO

TAX (SPECIFY)	GALS. @
PRODUCTS RECEIVED	RECEIVED PAYMENT
BY <i>J.M.</i>	CASH _____
	CHEQUES _____
APPROVED	EXCH. _____
CHECKED	TOTAL _____
	DRUM CHARGES <i>5 R 23.00</i>
	DRUM CREDITS _____
	TERMS - NET CASH (NO DISCOUNT)
	TOTAL <i>441 39</i>

352.28 - (Qty)

RET 425 CDM 73

W. H. HEDDERLEY
 EXPEDITING
 Grand Central
 Whitehorse, Yukon Y1A 0T7
 Phone (403) 637-7966

SEND
TO

Mr. D. Silversides
 Getty Mines Limited
 604-750 West Pender St.
 Vancouver, B.C. V6C 2T7

* Re. MacMillan Joint-Venture
 Service Contract # 14653

FROM

DEPT.

DATE

Mary Reddoch, Expediting

April 17, 1980.

SUBJECT

Expediting charges March 1 - April 15 1980

- March 1: -pick up CAT parts, Finning
 -Total North Communication re. mike for CP24 | 1 hr.
 -find a CAT skinner
- March 10: -errands downtown
 TNC, pick up mike
 Listers, chainsaw
 Yukon Honda, skidoo sleighs | 1 hr.
 Canadian Propane
 -do inventory, move gear to airport | 2½hr.
- March 11: -package mike, mail to B.Groat - postage \$3.60
 have Air North hold gear to be sent up from Watson Lake | ½hr.
- April 1: -check re. accounts, WhitePass
 General Enterprises, Northern Metallic | 2hr
 Kelly Douglas, Canamet, storage
 Finning, Canadian Propane - have acc'ts, OK
- April 8: -call from Gerry Delane
 to warehouse, D.O.C., find frequencies | 1hr
 etc. CH25
 -get burning permit
- April 11: -hotel reservation M.McTaggart, R.Burcher | N/C
 -pick up at airport, arrange flight to Ross River |
 -to warehouse check small generator, pick up | 1hr.
- April 12: -pick up mail Air North
 -M.McTaggart, R.Burcher to TNTA | ½hr.

Expediting charges: 9½hrs. @ \$20.00		\$190.00 ✓
Telephone charges, for long-distance calls (see records attached)	postage	3.60 ✓
		21.05 ✓
	Total	\$214.65 MR. ✓

Mary Reddoch.

REPLY FROM

REPLY DATE

214-65.

11W-1-3-811-314-10-5000.

APR 31 1980

FINNING TRACTOR & EQUIPMENT COMPANY LIMITED

HEAD OFFICE: 555 GREAT NORTHERN WAY, VANCOUVER, B.C. V5T 1E2 • TELEPHONE (604) 872-4444

FINNING

YOUR CATERPILLAR DEALER

CUSTOMER

MAR 7 1980

SHIPPED TO

CONWEST EXPLORATIONS LTD
1010 85 RICHMOND STREET W
TORONTO
ONT.

M5H 2G1

CONWEST EXPLORATIONS LTD
1010 85 RICHMOND STREET W
TORONTO
ONT.

M5H 2G1

BCH	INVOICE NO.	DATE INVOICED	CUSTOMER ORDER NUMBER	MAKE	MODEL	SERIAL NUMBER	ACCOUNT NUMBER
OR	M70528	03/03/80	VERBAL		D3	79U5047	18642

QUANTITY	DESCRIPTION	TAXES		UNIT PRICE	AMOUNT	CREDIT
		FED.	PROV.			
	PST EXEMPT REASON - YT					
1	5G0677 GUARD A	F		39.05	39.05	
1	6S8019 BOSS	F		1.84	1.84	
<p>INVOICE APPROVED FOR PAYMENT:</p> <p><i>H.A. Silver</i></p> <p>Charge to: <i>MACMILLAN JOINT VENTURE.</i></p> <p>Charge Project:</p>						

BCH	INVOICE NO.	PAGE	SHIPPED	TTY	INVOICE	NET AMOUNT	S.S. TAX	INVOICE TOTAL	CREDIT
OR	M70528	001	02/29	08	E. & O.E. SEE DETAILS ON REVERSE	40.89		40.89	

KETZA ENTERPRISES LTD.

ROSS RIVER
YUKON, Y0B 1S0

Phone [403] 969-2237
Telex 036-8-317

BLAKE S. MACDONALD, Pres.

September 8th, 1980

INVOICE

TO: Getty Mines Ltd.,
604 - 750 W. Pender St.,
Vancouver, B.C.
V6C 2T7

RE: Linecutting, Clear Lake area, Yukon, as
follows:

Grid 66 West:

Brush out - 3.31 miles

Cut line - 4.92 miles

TOTAL 8.23 miles @ \$450/mile \$3,703.00

Grid 11 East:

Brush out - 2.4 miles

Cut line - 4.2 miles

TOTAL 6.6 miles @ \$450/mile 2,970.00

66 Grid 5 East:

Brush out - 2.31 miles

Cut line - 3.33 miles

TOTAL 5.64 miles @ \$450/mile 2,538.00

Grid 8 East:

Brush out - 1.89 miles

Cut line - 4.17 miles

TOTAL 6.06 miles @ \$450/mile 2,727.00

TOTAL \$11,938.00

our invoice no: K161-80

July 23/88

Mac Millan Joint Venture

<u>Grid</u>	<u>Line-Miles Cut, Re-Chained or Re-Picketed</u>	<u>Line-Miles Gravity</u>	<u>Line-Miles E-M</u>
5W	5.95	1.42	4.73
4W-1	8.90	7.95	7.95
4W-2	6.14	4.64	5.09
4W-3	5.21	4.26	4.26
	20.25	16.85	17.30
3W	11.27	6.34	
1W-1	1.95	3.37	
1W-2	0.72	1.67	
1W-3	1.61	7.95	
1W-4	0.78	6.46	
	5.06	19.45	
CLW	3.03	3.45	
CL E	14.75	1.14	
CLE		10.32	14.66
		3.20	
			1.90
1E	4.66	3.90	
5E	<u>5.17</u>	<u>1.33</u>	<u>4.55</u>
Totals in line-miles	70.14	67.40	28.48

<u>Grid</u>	<u>Total Miles Cut, Re-chained or Re-picketed</u>
5W	5.95
4W	20.25
3W	11.27
1W	5.06
CLW	3.03
CL $\frac{1}{2}$ CLE	14.75
1E	4.66
5E	5.17
	<hr/>
	70.14

<u>Grid</u>	<u>Total Line-Miles of Gravity</u>
5W	1.42
4W	16.85
3W	6.34
1W	19.45
CLW	3.45
CL $\frac{1}{2}$ CLE	14.66
1E	3.90
5E	1.33
	<hr/>
Totals miles gravity	67.40

<u>Grid</u>	<u>Total Line-Miles of E-M</u>
-------------	------------------------------------

5W	4.73
----	------

4W	17.30
----	-------

3W	
----	--

1W	
----	--

CLW	
-----	--

CL $\frac{1}{2}$ CLE	1.90
----------------------	------

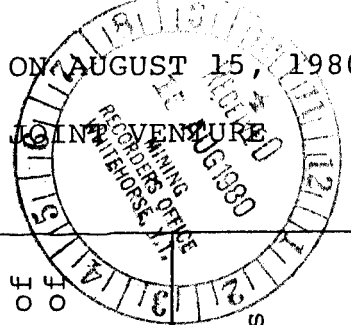
1E	
----	--

5E	4.55
----	------

Total miles E-M	28.48
--------------------	-------

FILING CERTIFICATES OF WORK AND GROUPING NOTICES ON AUGUST 15, 1980

FOR LINECUTTING ON THE CLAIMS OF THE MACMILLAN JOINT VENTURE



Group No.	No. of Claims in Group	No. of Claims Renewed	Renewal Period in Years	Amount of Work Recorded \$	Filing Costs of Certificates of Work \$	Grouping Fees \$
1	16	5	2 1/4	\$ 1,125.00	56.25	\$ 5.00
2	16	5	2 1/4	1,125.00	56.25	5.00
4	4	3	1/2	300.00	15.00	5.00
		1	1 1/2			
9	16	2	1 1/2	1,000.00	50.00	5.00
		14	1/2			
10	16	3	1 1/4	700.00	35.00	5.00
		13	1/4			
11	16	1	2 1/2	700.00	35.00	5.00
		1	1 1/4			
		14	1/4			
12	16	6	1 1/2	1,400.00	70.00	5.00
		10	1/2			
13	16	4	2 1/4	1,700.00	85.00	5.00
		5	1 1/4			
		7	1/4			
14	16	2	3			
		2	2			
		3	1 1/2	1,675.00	83.75	5.00
		1	1			
		8	1/4			
15	16	6	2 1/2			
		1	1 1/2	1,700.00	85.00	5.00
		9	1/2			
16	16	3	2 1/4	1,700.00	85.00	5.00
		7	1 1/2			
		6	1/4			

FILING CERTIFICATES OF WORK AND GROUPING NOTICES ON AUGUST 15, 1980

FOR LINECUTTING ON THE CLAIMS OF THE MACMILLAN JOINT VENTURE

Group No.	No. of Claims in Group	No. of Claims Renewed	Renewal Period in Years	Amount of Work Recorded \$	Filing Costs of Certificates of Work \$	Grouping Fees \$
17	16	2	2½	1,000.00	50.00	5.00
		2	1½			
		12	½			
18	16	2	2½	1,000.00	50.00	5.00
		2	1½			
		12	½			
19	16	3	1½	700.00	35.00	5.00
		13	½			
20	16	3	1½	700.00	35.00	5.00
		13	½			
21	12	2	2½	700.00	35.00	5.00
		10	½			
22	16	2	1½	650.00	32.50	5.00
		2	½			
		12	½			
23	14	3	1½	700.00	35.00	5.00
		2	½			
		9	½			
24	16	2	2½	1,050.00	52.50	5.00
		2	1½			
		12	½			
25	16	2	2½	1,050.00	52.50	5.00
		2	1½			
		12	½			

FILING CERTIFICATES OF WORK AND GROUPING NOTICES ON AUGUST 15, 1980

FOR LINECUTTING ON THE CLAIMS OF THE MACMILLAN JOINT VENTURE

Group No.	No. of Claims in Group	No. of Claims Renewed	Renewal Period in Years	Amount of Work Recorded \$	Filing Costs of Certificates of Work \$	Grouping Fees \$
26	16	2	2½	1,050.00	52.50	5.00
		2	1½			
		12	½			
27	16	3	2½	1,000.00	50.00	5.00
		13	½			
28	16	1	3½	1,700.00	85.00	5.00
		5	2½			
		10	½			
29	16	2	3½	1,700.00	85.00	5.00
		2	2½			
		3	1½			
		9	½			
30	16	2	3½	1,400.00	70.00	5.00
		2	2½			
		12	½			
31	14	4	1½	1,350.00	67.50	5.00
		2	1½			
		8	½			
32	16	3	1½	700.00	35.00	5.00
		13	½			
33	15	14	½	700.00	35.00	5.00
34	16	6	1½	1,400.00	70.00	5.00
		1	1½			
		1	1			
		8	½			

FILING CERTIFICATES OF WORK AND GROUPING NOTICES ON AUGUST 15, 1980

FOR LINECUTTING ON THE CLAIMS OF THE MACMILLAN JOINT VENTURE

Group No.	No. of Claims in Group	No. of Claims Renewed	Renewal Period in Years	Amount of Work Recorded \$	Filing Costs of Certificates of Work \$	Grouping Fees \$
35	15	3	2½			
		5	1¼	1,700.00	85.00	5.00
		4	1			
36	15	2	2			
		2	1½			
		3	1¼	1,725.00	86.25	5.00
		6	1			
		1	½			
37	12	2	1½			
		2	1¼	1,000.00	50.00	5.00
		4	1			
		1	½			
38	13	2	1¼			
		6	1	1,000.00	50.00	5.00
		3	½			
39	15	3	½			
		2	1¼	1,400.00	70.00	5.00
		10	1			
40	16	4	¼			
		1	2	1,000.00	50.00	5.00
		7	1			
41	15	1	3			
		6	1	1,000.00	50.00	5.00
		4	½			

FILING CERTIFICATES OF WORK AND GROUPING NOTICES ON AUGUST 15, 1980

FOR LINECUTTING ON THE CLAIMS OF THE MACMILLAN JOINT VENTURE

Group No.	No. of Claims in Group	No. of Claims Renewed	Renewal Period in Years	Amount of Work Recorded \$	Filing Costs of Certificates of Work \$	Grouping Fees \$
42	15	2 5	2 1	\$ 1,000.00	\$ 50.00	\$ 5.00
43	15	4 1 1 5 2	¼ 3 2 1 ¼	1,050.00	52.50	5.00

FILING CERTIFICATES OF WORK AND GROUPING NOTICES ON AUGUST 1, 1980
 FOR LINECUTTING ON THE CLAIMS OF THE MACMILLAN JOINT VENTURE

Group No.	No. of Claims in Group	Amount of Work Recorded	No. of Claims Renewed	Renewal Period in Years	Filing Costs of Certificates of Work - \$	Grouping Fees - \$
<i>1E</i>	12	500.00	10	$\frac{1}{2}$	25.00	5.00
<i>5E</i>	16	950.00	13 2	$\frac{1}{2}$ $1\frac{1}{2}$	47.50	5.00
<i>5W</i>	16	650.00	13	$\frac{1}{2}$	32.50	5.00
<i>4W</i>	6	600.00	4	$1\frac{1}{2}$	30.00	5.00
<i>5E</i>	16	550.00 450.00	11 3	$\frac{1}{2}$ $1\frac{1}{2}$	27.50 22.50	5.00
					<hr/> 185.00	<hr/> 25.00

Filing Certificates of Work and Grouping Notices on
 September 9, 1980 For Linecutting Surveys Conducted
 on Poe Claims in August - September 1980

Group No.	No. of Claims in Group	No. of Claims Renewed in Group	Renewal Period in Years	Amount of Work Recorded as Assessment \$	Filing Costs of Certificates of Work - \$	Grouping Fees - \$
63	15	15	1	1500.00	75.00	5.00
64	15	15	1	1500.	75.00	5.00
65	12	3	2	} 1600	75.00	5.00
		9	1			
66	15					
66	15	15	1	1600 1500	75.00	5.00
67	10	10	2	2000	100.00	5.00
68	10	10	2	2000	100.00	5.00
69	16	7	1	} 2500	125.00	5.00
		9	2			
70	15	10	2	} 2500	125.00	5.00
		5	1			
71	14	8	1	} 2000	100.00	5.00
		6	2			
72	15	10	1	} 2000	100.00	5.00
		5	2			
Totals				\$ 19,000.00	\$ 950.00	\$ 50.00

-G. D. Delane, Getty Mines, Ltd.
 Sept. 9, 1980

Linecutting Expenditures on Sue Claims (NTS 105 L+K)

During Period August 15 to Sept 8, 1980

1. Ketza Enterprises invoice for linecutting ^{\$}
(Invoice # K161-80) = 11,938.00
 - (2) Trans North Turbo Air helicopter
support for linecutters = 7095.00
- Total linecutting expenditures = \$ 19,033.00

Total # of claims covered by linecutting
in grids 66W, 6E, 8E, 11E = 38 claims.

Average linecutting expenditure / claim = $\frac{\$ 19,033.00}{38}$
= $\$ 500.87$

Table of Linecutting Expenditures Per Grid Claim Block

<u>Grid #</u>	<u>Line Miles Cut</u>	<u># of Claims Covered By Linecutting</u>	<u>Total line-cutting Expenditures Per Grid Claim Block</u>
66W	8.23	12	\$ 6010.00
6E	5.64	10	5008.00
8E	6.06	8	4007.00
11E	6.6	8	4007.00
	<u>26.53</u>	<u>38</u>	<u>19032.00</u>

Sept. 8/80

G. D. Delane
Getty Mines Ltd.

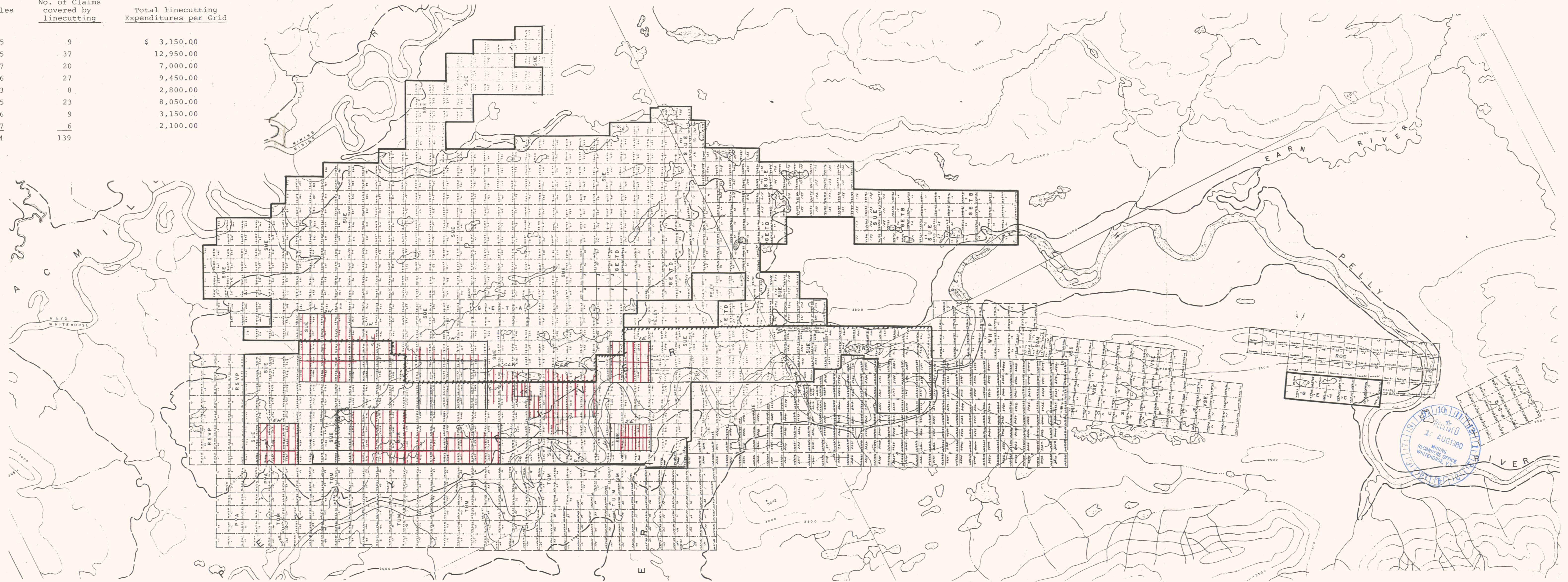
Linecutting Expenditures on Sue Claims during period March-April, 1980, total = \$48,371.00

Total number of claims covered by linecutting = 139

Average linecutting expenditures per claim - \$350.00 (approx.)

TABLE OF LINECUTTING EXPENDITURES PER GRID CLAIM BLOCK

Grid No.	Line-Miles Cut	No. of Claims covered by linecutting	Total linecutting Expenditures per Grid
5W	5.95	9	\$ 3,150.00
4W	20.25	37	12,950.00
3W	11.27	20	7,000.00
1W	5.06	27	9,450.00
CLW	3.03	8	2,800.00
CL+CLE	14.75	23	8,050.00
1E	4.66	9	3,150.00
5E	5.17	6	2,100.00
	70.14	139	



MAP SHOWING DISTRIBUTION OF LINECUTTING ON SUE CLAIMS

SCALE 1' = 1 mile (approx.)