

WHITEHORSE TEL.: 667-4343, 667-7114
AREA CODE: 403, TELEX: 049-834
CABLE ADDRESS: ANVLMINE

00-205
VANCOUVER TEL.: 683-9304
AREA CODE: 604, TELEX: 04-50237
CABLE ADDRESS: ANVLZINC

ANVIL MINING CORPORATION LIMITED
P.O. BOX 2470
103 POLARIS BLOCK
WHITEHORSE, YUKON TERRITORY
CANADA

VANCOUVER OFFICE:
510 WEST HASTINGS STREET
VANCOUVER 2, B.C.
CANADA

November 8, 1966


Mr. G. McIntyre
Chief Mining Recorder
Federal Building
Whitehorse, Yukon Territory

Dear Mr. McIntyre:

The accompanying report is submitted to apply for assessment purposes on the IVAN Claim Group in compliance with the YUKON QUARTZ ACT. All claims are owned by ANVIL MINING CORP. LTD. in the Anvil District of the Yukon Territory.

The area covered is contained on claim Map 105 K/11.

Yours truly,


R.S. Adamson, P. Eng.,
Chief of Exploration for
ANVIL MINING CORP. LTD.

RSA/is

091262

DIAMOND DRILLING
IVAN CLAIM GROUP

by

R.S. ADAMSON, P. Eng.

November 1966

DIAMOND DRILLING
IVAN CLAIM GROUP

Diamond Drilling has been carried out on the IVAN Claim Group on a contract basis by ARSENAULT DIAMOND DRILLING CO. for ANVIL MINING CORP. LTD. during June, July, August, and September of 1966.

Four holes were drilled totalling 1524 feet. This drilling was undertaken with a view to intersecting massive sulphides on previously established geophysical anomalies detected from airborne surveys and substantiated by following ground geophysical surveys.

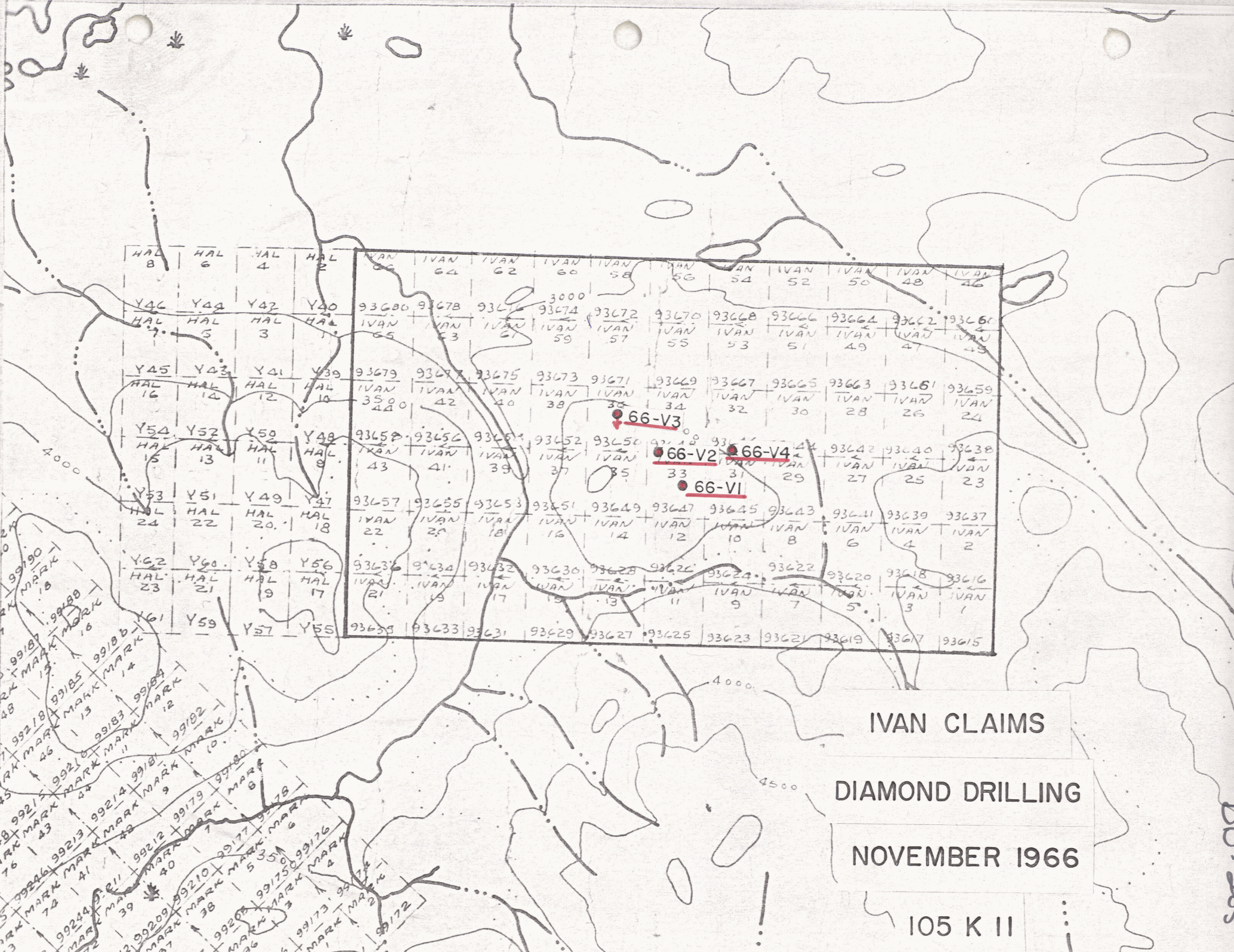
No sulphides of any economic significance were intersected so that no assaying was done on the diamond drill core.

The drill core is located on the IVAN property.

R.S. Adamson, P. Eng.

STATEMENT OF COSTS

<u>DIAMOND DRILL HOLE</u>	<u>FOOTAGE</u>	<u>RATE</u>	<u>COST</u>
DDH 66 - V1	339 ft.	@ \$9./ft.	\$3,051.00
DDH 66 - V2	309 ft.	@ \$9./ft.	2,781.00
DDH 66 - V3	438 ft.	@ \$9./ft.	3,942.00
DDH 66 - V4	438 ft.	@ \$9./ft.	3,942.00
			<u>13,716.00</u>



HAL 8	HAL 6	HAL 4	HAL 2	IVAN 65	IVAN 64	IVAN 62	IVAN 60	IVAN 58	IVAN 56	IVAN 54	IVAN 52	IVAN 50	IVAN 48	IVAN 46
Y46	Y44	Y42	Y40	93680	93678	93676	93674	93672	93670	93668	93666	93664	93662	93660
HAL 7	HAL 5	HAL 3	HAL 1	IVAN 65	IVAN 63	IVAN 61	IVAN 59	IVAN 57	IVAN 55	IVAN 53	IVAN 51	IVAN 49	IVAN 47	IVAN 45
Y45	Y43	Y41	Y39	93679	93677	93675	93673	93671	93669	93667	93665	93663	93661	93659
HAL 16	HAL 14	HAL 12	HAL 10	IVAN 3500	IVAN 42	IVAN 40	IVAN 38	IVAN 36	IVAN 34	IVAN 32	IVAN 30	IVAN 28	IVAN 26	IVAN 24
Y54	Y52	Y50	Y48	93658	93656	93654	93652	93650	93648	93646	93644	93642	93640	93638
HAL 15	HAL 13	HAL 11	HAL 9	IVAN 43	IVAN 41	IVAN 39	IVAN 37	IVAN 35	IVAN 33	IVAN 31	IVAN 29	IVAN 27	IVAN 25	IVAN 23
Y53	Y51	Y49	Y47	93657	93655	93653	93651	93649	93647	93645	93643	93641	93639	93637
HAL 24	HAL 22	HAL 20	HAL 18	IVAN 22	IVAN 25	IVAN 18	IVAN 16	IVAN 14	IVAN 12	IVAN 10	IVAN 8	IVAN 6	IVAN 4	IVAN 2
Y62	Y60	Y58	Y56	93636	93634	93632	93630	93628	93626	93624	93622	93620	93618	93616
HAL 23	HAL 21	HAL 19	HAL 17	IVAN 21	IVAN 19	IVAN 17	IVAN 15	IVAN 13	IVAN 11	IVAN 9	IVAN 7	IVAN 5	IVAN 3	IVAN 1
Y61	Y59	Y57	Y55	93635	93633	93631	93629	93627	93625	93623	93621	93619	93617	93615

66-V3

66-V2

66-V4

66-V1

IVAN CLAIMS

DIAMOND DRILLING

NOVEMBER 1966

105 K II

DD-205

ANVIL MINING CORPORATION LIMITED

Whitehorse, Yukon

 PROPERTY NAME IVAN

 LOCATION 133°15' W 62°35' N

 DATE DRILLED JUNE 1966

 SCALE OF LOG 1" = 40' LOGGED BY M.O.H. DATE JUNE 22/66

 HOLE NO. V-1 DEPTH 339

 COLLAR ELEVATION ~3525 CORE SIZE A INCLINATION TESTS

 BEARING — (MAG OR TRUE) DIP 90°

 CO-ORDINATES 1+50 N. 4+00 W.

 SURFACE OR UNDERGROUND

 TOTAL RECOVERY 338.5 ft or 99.9%

SHEET 1 OF 2

ROCK TYPES AND ALTERATION	MINERALIZATION AND STRUCTURES	FOOTAGE BLOCKS	ft RECOVERY	SAMPLE		INTERVAL							
				NO.		FROM	TO						
40	Alluvium 0-22' <u>ARGILLITE</u> , generally <u>limy</u> , light gray to blk. medium soft. graphitic												
80	" Locally more siliceous e.g. 65' area												
120	"												
160	"												
200	"												
240	Generally lighter coloured from 225 ft. Light muddy gray.												

MINERALIZATION AND STRUCTURES

 FOOTAGE
BLOCKS

 ft
RECOVERY

 SAMPLE
NO.

INTERVAL

FROM

TO

Alluvium 0-22'

ARGILLITE, generally limy,
light gray to blk.
medium soft. graphitic

 Disseminated Xst py < 0.5 mm (indigenous). Stringers & blobs
py, po, cp. Mostly 1/8" or less. Total sulphide < 2%?
Minor brecciation & calcareous filling.
Banding 80-45% to core axis.

25

35

39

43

63

73

 Some strs mainly py, others mainly po, fewer cp.
In general py > po > cp. Sulphides generally irregular.
56' - 3" qtz. calcite & pyrite, galena, sp
15-20% sulphides

 Sulphide strs are irregular both $\sim \perp$ banding.

Banding 70-85° to core axis

Banding 70° to core axis.

 Fracture fillings of calcite & py up to 1/8".
Banding 80° to core axis, locally to 65°.

Banding 50° to core axis

Banding 60° to core axis

 177 very graphitic (schistose) 6" broken core.
Banding 45-50° to core

Blobs of str as above. Total ~ 1%?

207 str // core to 1/8" calcite py, po, cp?, cp?

210 " " " " " "

Banding 70° to core axis

 220 Banding 65-75° to core.
Scattered str & blobs

Somewhat brecciated with calcite fillings.

205

210

224

229

234

18.5

C

100-100

PROPERTY NAME I.V.A.N. HOLE NO. Y-1 ... SCALE OF LOG 1" = 40'

ROCK TYPES AND ALTERATION	MINERALIZATION AND STRUCTURES	FOOTAGE BLOCKS	f.c. RECOVERY	INTERVAL								
				SAMPLE No.	FROM TO							
Generally soft	Banding indistinct. Strs of blebs py, po.											
270 becoming harder, more siliceous, darker grey. 280 QUARTZITE	Banding ~ 70% to core.		C									
283 - softer & few small Qtzite bands (upto 1 ft.)	280.5 1" band f.g. po & minor cp.											
295 - Grades into QUARTZITE with some argillite bands.	General brecciation of the muddy facies. Mineralization does not appear to favour one facies more than other.		C									
320 Grades into softer, grey ARGILLITE												
325 % w.s. 8/16 of grey bands Graphitic.	Banding 65% to core.		C									
	END OF HOLE	339										

DD-205

PROPERTY NAME I.V.A.N. HOLE NO. V-2... SCALE OF LOG 1" = 40'

ROCK TYPES AND ALTERATION	MINERALIZATION AND STRUCTURES	FOOTAGE BLOCKS	RECOVERY ft %	INTERVAL							
				SAMPLE NO.	FROM TO						
<p><u>ARGILLITE</u> Light grey, soft locally cherty & harder. Some chlorite alteration</p>	<p>Some of mineralization occurs as concentrations of v.f.g. sulphide (mainly po, cp) as a band in rk up to 1.5 inches eg. 230' & 252 General increase in sulphides po, sp, py, arsenopy, gal, ca 3% total(?). Banding 65° to core axis. Many small fillings of calcite.</p>	245	C								
		254									
<p>280</p>	<p>Bandings indistinct - irregular granulations. Locally brecciated.</p>	258	C								
		264									
<p>320</p>	<p>Core badly broken Scattered blobs py, po, gal. << 1%</p>	266	C								
		268									
<p>338</p>	<p>END OF HOLE</p>	271	C								
		274									
		286									
		288									
		291									
		294									
		298									
		302									
		306									
		309									
		315									
		317									
		320									
		338									

DD-205

PROPERTY NAME IVAN HOLE NO. 6.6-V-3 SCALE OF LOG 1" = 40'

ROCK TYPES AND ALTERATION	MINERALIZATION AND STRUCTURES	FOOTAGE BLOCKS	RECOVERY	SAMPLE		INTERVAL							
				No.		FROM	TO						
<p><u>ARGILLITE</u>, Light & dark to black. Very graphitic 265-280, varying amounts elsewhere. Generally soft.</p> <p>280</p>	<p>Scattered calcite stringers up to 1/2"</p> <p>" po & py strs & blebs. Trace galena @ 267.</p> <p>Minor sphalerite @ 276.</p>	280	C										
<p>Grey to black, ver. graphitic.</p> <p>320</p>	<p>Scattered blebs py & po.</p>	320	15										
<p>11</p> <p>360</p>	<p>11</p>	360	34										
<p>Generally black & very graphitic to 373, Grey to black to 390, Black to 400.</p> <p>400</p>	<p>375 galena, sphalerite, py, po, tr. ep ~ 20% sulphide in 2" siliceous band.</p>	391	32										
<p>Generally soft & sooty black. Very graphitic Graphite well developed.</p> <p>438</p>	<p>Minor py, ep @ 413</p> <p>"SAND" 408-410, 422-438.</p> <p>END OF HOLE</p>	438	29										

DD-205

ANVIL MINING CORPORATION LIMITED

Whitehorse, Yukon

PROPERTY NAME IVAN

LOCATION

DATE DRILLED AUG - SEPT 66

SCALE OF LOG 1" = 40' LOGGED BY MOH DATE SEPT 15/66

HOLE NO. 66-V:4 DEPTH 438

COLLAR ELEVATION CORE SIZE Ax INCLINATION TESTS

BEARING (MAG OR TRUE) DIP 90

CO-ORDINATES 10+00 N. 12+00 E.

SURFACE OR UNDERGROUND

TOTAL RECOVERY 342' = 83.25%

ROCK TYPES AND ALTERATION	MINERALIZATION AND STRUCTURES	FOOTAGE BLOCKS	ft	RECOVERY	SAMPLE NO.	INTERVAL								
						FROM	TO							
OVERBURDEN - 26'														
40 ARGILLITE <i>Dk grey to black. Limy. Soft. Varying amt. graphite.</i>	Core in small chips.	26-27	7											
80 "	Bedding indistinct.	41-61	22											
	Bedding 65° to core axis. at 77'	64-69												
		75-80												
120 "	Bedding 65° to core axis.	84-92	33											
		94-100												
		106-109												
		113-113												
160 Very graphitic		125-130	22											
		133-145												
		150-154												
		156-159												
200 Mottled lt. grey & black to 180' Mainly grey-black from 180'. Very graphitic.	Highly contorted. Widely scattered str & blobs pyrite	164-169	32											
		170-173												
		176-184												
		193-195												
		198-201												
240 "	Str & blobs pyrite - 1/2 to 1/4 white = py, sp & galena at 233.	203-213	31											
		215-218												
		220-221												
		224-227												
		230-234												

00-205

