

DD-250

WHITEHORSE TEL.: 667-4343, 667-7114
AREA CODE: 403, TELEX: 049-834
CABLE ADDRESS: ANVLMINE

VANCOUVER TEL.: 683-9304
AREA CODE: 604, TELEX: 04-50237
CABLE ADDRESS: ANVLZINC

ANVIL MINING CORPORATION LIMITED
P.O. BOX 2470
103 POLARIS BLOCK
WHITEHORSE, YUKON TERRITORY
CANADA

091255
v. 1

VANCOUVER OFFICE:
510 WEST HASTINGS STREET
VANCOUVER 2, B.C.
CANADA

September 13, 1966

Mr. G. McIntyre
Chief Mining Recorder
Federal Building
Whitehorse, Yukon Territory.

Dear Mr. McIntyre:

The accompanying report is submitted to apply for assessment purposes on the ACE Claim Group in compliance with the YUKON QUARTZ ACT. All claims are owned by ANVIL MINING CORP LTD in the Anvil District of the Yukon Territory.

The area covered is contained on claim map
105 K/7.

Yours truly,



R.S. Adamson, P. Eng.
Chief of Exploration for
ANVIL MINING CORP. LTD.

RSA:prc

091255

DIAMOND DRILLING
ACE CLAIM GROUP

by

R.S. ADAMSON, P.Eng.

September 1966

DIAMOND DRILLING

ACE CLAIM GROUP

Diamond Drilling has been carried out on the ACE Claim Group on a contract basis by ARSENAULT DIAMOND DRILLING CO. for ANVIL MINING CORP. during August and September of 1966. Drilling of this property is still in progress.

Two holes, DDH 66-A1 and 66-A2, are completed. A third is in progress and a fourth is planned. This drilling was undertaken with a view to intersecting massive sulphides on previously established geophysical anomalies detected from airborne surveys and substantiated by follow up ground geophysical surveys.

Only DDH 66-A2 is being submitted for assessment purposes at this time. Diamond drill hole 66-A1 will be submitted with the remaining drill holes when they are completed.

Diamond drill hole 66-A2 was completed at 503 feet. No sulphides of any economic interest were intersected so that no assaying was done on the diamond drill core.

The drill core is located at the ACE base camp on the ACE property.

R.S. Adamson, P. Eng

STATEMENT OF COSTS

<u>DIAMOND DRILL HOLE</u>	<u>FOOTAGE</u>	<u>RATE</u>	<u>COST</u>
DDH 66-A2	503	\$9 per ft	\$4527

ANVIL MINING CORPORATION LIMITED

Whitehorse, Yukon

PROPERTY NAME ACE

LOCATION

DATE DRILLED August 1966

SCALE OF LOG 1" = 40' LOGGED BY MOH DATE SEPT 3/66

HOLE NO. 66-A-2 DEPTH 503

COLLAR ELEVATION CORE SIZE Ax INCLINATION TESTS

BEARING 180 (MAG OR TRUE) DIP 60

CO-ORDINATES 9+00 N. 192+00 W.

SURFACE OR UNDERGROUND

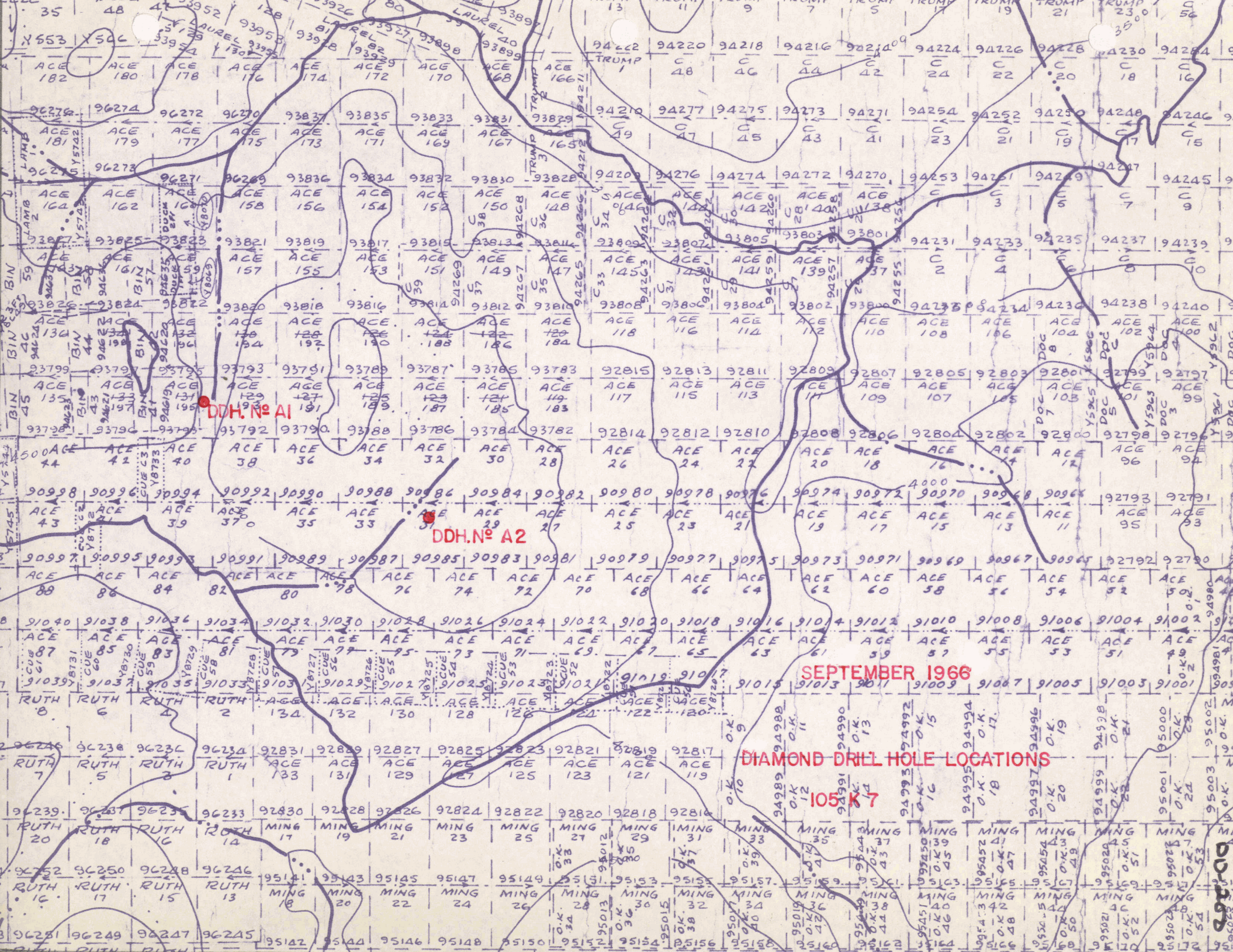
TOTAL RECOVERY 373' = 77.1%

ROCK TYPES AND ALTERATION	MINERALIZATION AND STRUCTURES	FOOTAGE BLOCKS	ft. RECOVERY	SAMPLE NO.	INTERVAL								
					FROM	TO							
OVER BURDEN		19											
19 PHYLLITE Light grey, slightly graphitic. Limy. ~ 30% of recovered core is qtz & calcite.	Foliation 50° to core axis. Traces po.	24 27 29 32 36 40	12										
40 Limy. Lt. to dark grey. Graphitic. "Bedding" surfaces have spotted appearance, original sediment may have been granular.	Foliation 25° to core axis. Traces po.	46 51 55 61 66 70 74 75 80	13										
80 Dark grey to black, soft, graphitic. Limy.	Foliation very irregular, locally very indistinct. Traces po.	82 96 100 110 113 118	22										
120 Grey with irregular white quartz & calcite. Locally graphitic. Limy.	Foliation very irregular with considerable brecciation. Traces po.	123 126 131 133 135 141 143	30										
160 Foliation accentuated by very thin qtz & calcite layers. Core becoming less broken.	Foliation 60° to core axis, locally very irregular. Traces po.	157 164 173 178 189 194	23										
200 	Foliation 60 to core axis. Traces po.	206 216 226 233 240	33										

DD-255

ROCK TYPES AND ALTERATION	MINERALIZATION AND STRUCTURES	FOOTAGE BLOCKS	RECOVERY	SAMPLE		INTERVAL							
				NO.		FROM	TO						
<p><u>PHYLLITE</u> Grey with abundant bands of white calcite & qtz from hairline to 8" thick. Minor graphite.</p>	<p>Foliation generally 55° to core axis, with much local distortion and shearing.</p> <p>Scattered po. blebs.</p>	<p>248 251 261 266 271</p>	<p>37</p>										
280													
	"												
320													
	"												
360													
	"												
400	<p>Becoming more graphitic.</p>												
	"												
440													
	"												
480													
	"												
503	<p>Very graphitic 494-503</p>												
	<p>END OF HOLE</p>												

DD-200



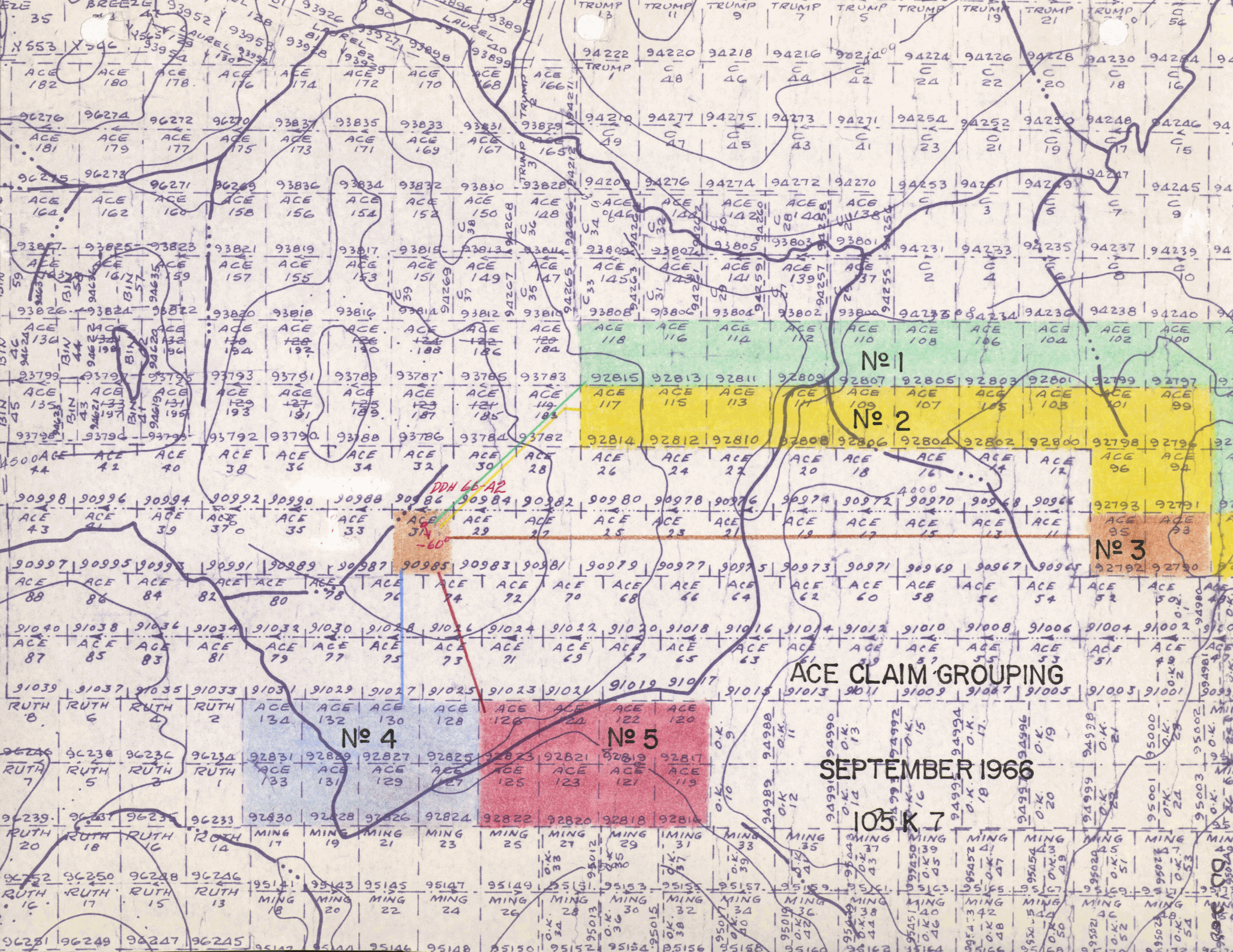
DDH. N° A1

DDH. N° A2

SEPTEMBER 1966

DIAMOND DRILL HOLE LOCATIONS

105 K7



ACE CLAIM GROUPING

SEPTEMBER 1966

105K 7

No 4

No 5

No 1

No 2

No 3

ACCESS ROAD
BETA CLAIM GROUP

by

R.S. Adamson, F.Eng
September 1966

WHITEHORSE TEL.: 667-4343, 667-7114
AREA CODE: 403, TELEX: 049-834
CABLE ADDRESS: ANVLMINE

VANCOUVER TEL.: 683-9304
AREA CODE: 604, TELEX: 04-50237
CABLE ADDRESS: ANVLZINC

ANVIL MINING CORPORATION LIMITED
P.O. BOX 2470
103 POLARIS BLOCK
WHITEHORSE, YUKON TERRITORY
CANADA

~~90889~~
091255
v.3

VANCOUVER OFFICE:
510 WEST HASTINGS STREET
VANCOUVER 2, B.C.
CANADA

September 16, 1966

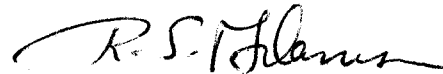
Mr. G. McIntyre
Chief Mining Recorder
Federal Building
Whitehorse, Yukon Territory

Dear Mr. McIntyre:

The accompanying report is submitted to
apply as assessment work on the BETA Group.

The area covered is on claim map sheet
105 K/7.

Yours truly,



R.S. Adamson, P. Eng
Chief of Exploration for
ANVIL MINING CORP. LTD.


ACCESS ROAD

BETA CLAIM GROUP

From January 19 to February 18, 1966, an access road to the ACE property was built by ANVIL MINING COMPANY LTD in order to service an exploration program based at the ACE property.

This road extended 16½ miles from the main PELLY - VANGORDA - FARO road along the northwest side of the Blind Creek valley and terminated at the ACE base camp.

A portion of the road, 3½ miles, crossed the BETA property. It is this portion of the ACE access road that is being submitted for assessment purposes on the BETA property.



R.S. Adamson, P. Eng.

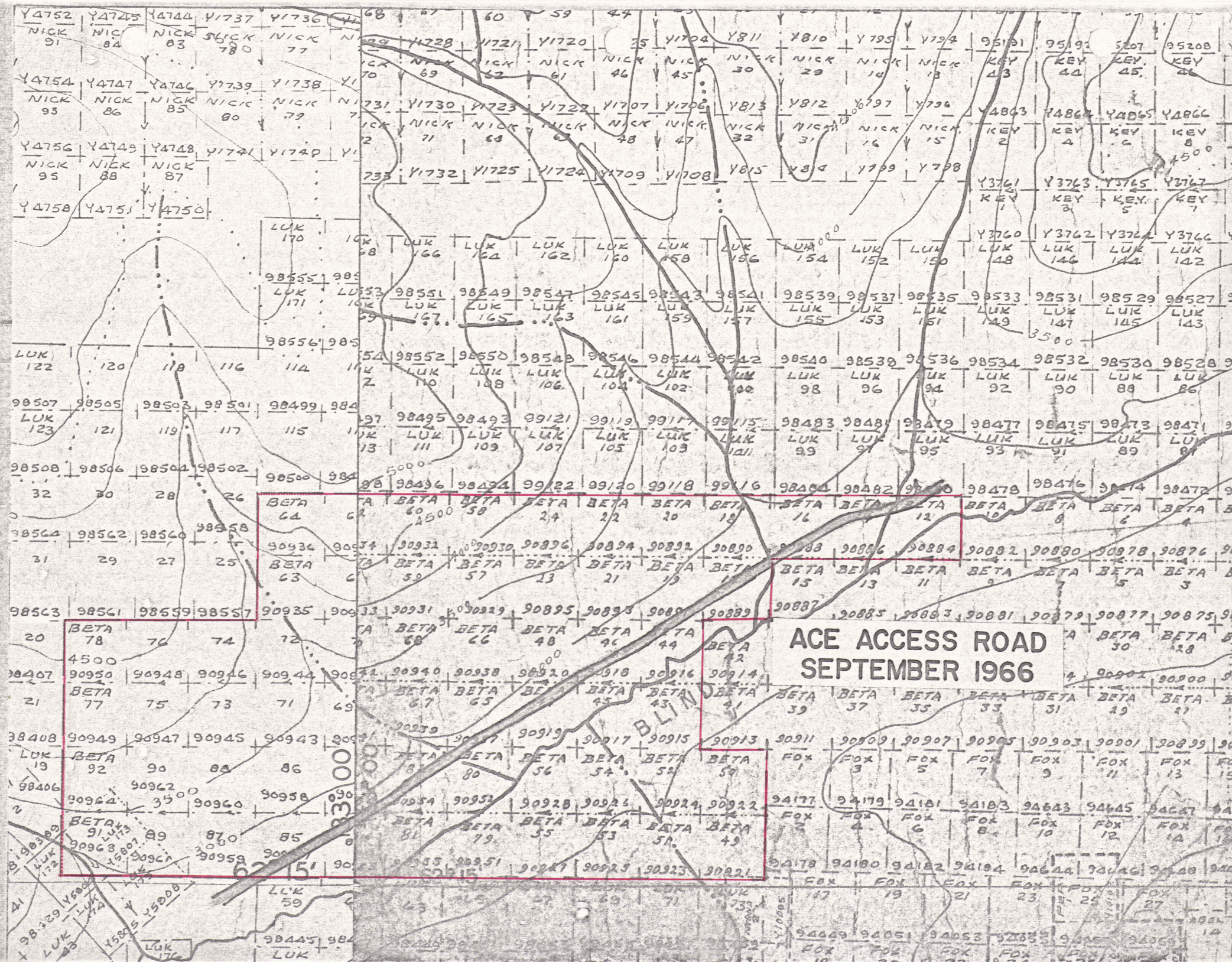
STATEMENT OF COSTS

ACE ACCESS ROAD - 16½ miles

D-8 Cat (two shifts) 519 hours @ \$30 per hr	\$15,570.00
D-7 Cat (two shifts) 519 hours @ \$25 per hr	12,975.00
Grader 162 hours @ \$15 per hour	2,430.00
Supervisor (Z. Lavoie) 15 days @ \$25 per day	<u>375.00</u>
	<u>\$31,350.00</u>

Portion of Road applicable to BETA claims ¾ miles

$$\frac{3.25}{16.5} \times \$31,350 = \underline{\underline{\$6,175.00}}$$



ACE ACCESS ROAD
SEPTEMBER 1966

90935	90933	90931	90929	90895	90893	90891	90889	90887	90885	90883	90881	90879	90877	90875
BETA	BETA	BETA	BETA	BETA	BETA	BETA	BETA	BETA	BETA	BETA	BETA	BETA	BETA	BETA
78	76	74	72	68	66	64	62	60	58	56	54	52	50	48
90949	90947	90945	90943	90941	90939	90937	90935	90933	90931	90929	90927	90925	90923	90921
BETA	BETA	BETA	BETA	BETA	BETA	BETA	BETA	BETA	BETA	BETA	BETA	BETA	BETA	BETA
92	90	88	86	84	82	80	78	76	74	72	70	68	66	64
90954	90953	90951	90949	90947	90945	90943	90941	90939	90937	90935	90933	90931	90929	90927
BETA	BETA	BETA	BETA	BETA	BETA	BETA	BETA	BETA	BETA	BETA	BETA	BETA	BETA	BETA
81	79	77	75	73	71	69	67	65	63	61	59	57	55	53
90958	90956	90954	90952	90950	90948	90946	90944	90942	90940	90938	90936	90934	90932	90930
BETA	BETA	BETA	BETA	BETA	BETA	BETA	BETA	BETA	BETA	BETA	BETA	BETA	BETA	BETA
85	83	81	79	77	75	73	71	69	67	65	63	61	59	57
90959	90957	90955	90953	90951	90949	90947	90945	90943	90941	90939	90937	90935	90933	90931
BETA	BETA	BETA	BETA	BETA	BETA	BETA	BETA	BETA	BETA	BETA	BETA	BETA	BETA	BETA
89	87	85	83	81	79	77	75	73	71	69	67	65	63	61

DIAMOND DRILLING
ACE CLAIM GROUP

By

R.S. ADAMSON, P.Eng

October 1966

WHITEHORSE TEL.: 667-4343, 667-7114
AREA CODE: 403, TELEX: 049-834
CABLE ADDRESS: ANVLMINE

DD-200
VANCOUVER TEL.: 683-9304
AREA CODE: 604, TELEX: 04-50237
CABLE ADDRESS: ANVLZINC

ANVIL MINING CORPORATION LIMITED

P.O. BOX 2470
103 POLARIS BLOCK
WHITEHORSE, YUKON TERRITORY
CANADA

091255
V.2

VANCOUVER OFFICE:
510 WEST HASTINGS STREET
VANCOUVER 2, B.C.
CANADA

October 6, 1966

Mr. G. McIntyre
Chief Mining Recorder
Federal Building
Whitehorse, Yukon Territory

Dear Mr. McIntyre:

The accompanying report is submitted to apply for assessment purposes on the ACE Claim Group in compliance with the YUKON QUARTZ ACT. All claims are owned by ANVIL MINING CORP. LTD. in the Anvil District of the Yukon Territory.

The area covered is contained on claim Map 105 K/7.

Yours truly,



R.S. Adamson, P. Eng.,
Chief of Exploration for
ANVIL MINING CORP. LTD.

RSA:prc

091255

DIAMOND DRILLING

ACE CLAIM GROUP

Diamond Drilling has been carried out on the ACE Claim Group on a contract basis by ARSENAULT DIAMOND DRILLING CO. for ANVIL MINING CORP. during August and September of 1966. Drilling on this property is completed for 1966 as of September 30th.

Four holes were completed totalling 1966 feet. This drilling was undertaken with a view to intersecting massive sulphides on previously established geophysical anomalies detected from airborne surveys and substantiated by follow up ground geophysical surveys.

Diamond Drill 66-A2 has already been submitted for assessment requirements. The three remaining drill holes, 66-A1, 66-A3, and 66-A4 are now being submitted. These three holes total 1463 feet.

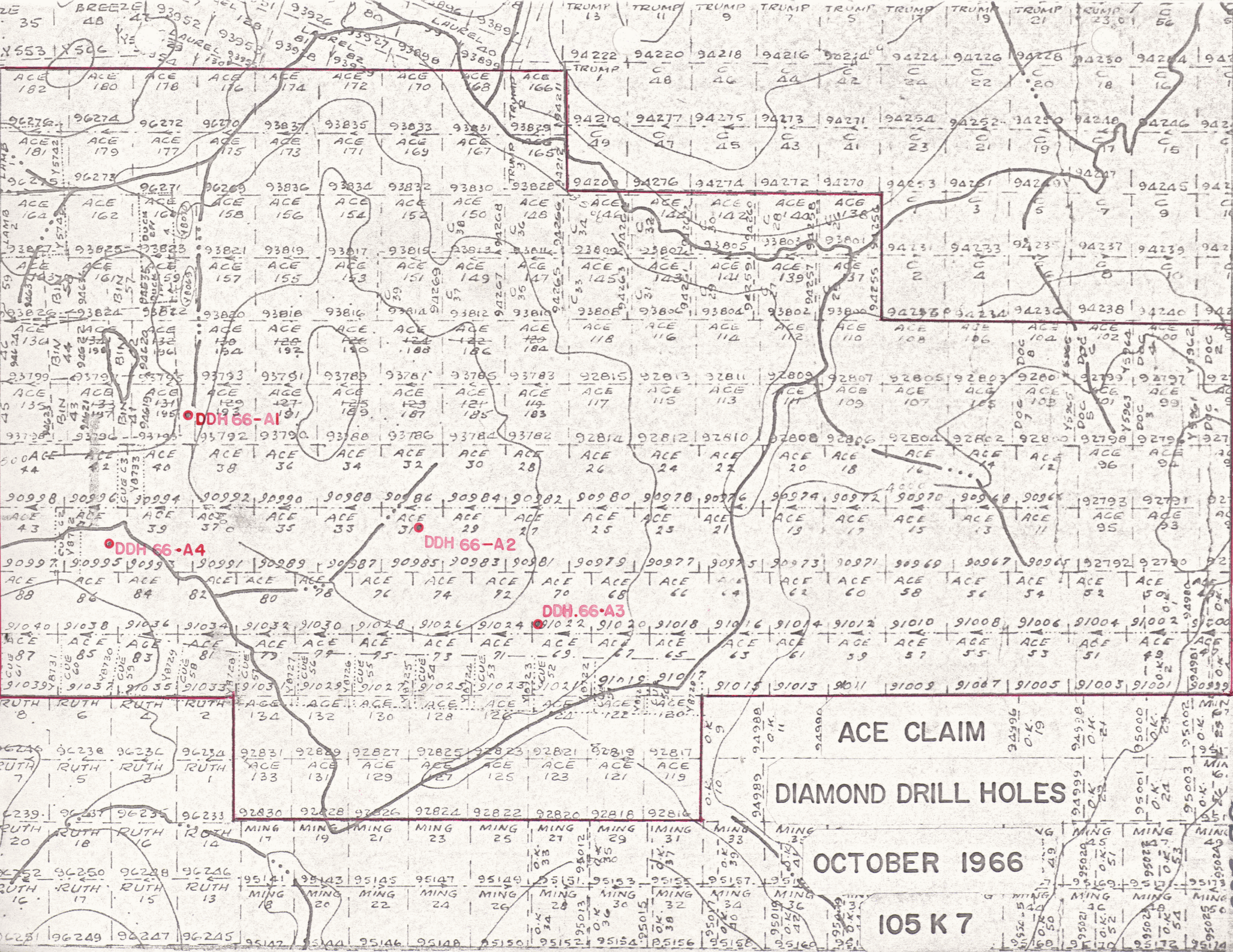
No sulphides of any economic significance was intersected so that no assaying was done on the diamond drill core.

The drill core is located at the ACE base camp on the ACE property.

R.S. Adamson, P.Eng.

STATEMENT OF COSTS

<u>DIAMOND</u>	<u>DRILL</u>	<u>HOLE</u>	<u>FOOTAGE</u>	<u>RATE</u>	<u>COST</u>
DDH	66-	A1	501'	@ \$9 per ft	\$4,509.
DDH	66-	A3	502'	@ \$9 per ft	\$4,518
DDH	66-	A4	460'	@ \$9 per ft	<u>\$4,140</u>
					\$ 13,167



DDH 66-A1

DDH 66-A4

DDH 66-A2

DDH 66-A3

ACE CLAIM

DIAMOND DRILL HOLES

OCTOBER 1966

105 K 7

ANVIL MINING CORPORATION LIMITED

Whitehorse, Yukon

PROPERTY NAME ... A.C.E.

LOCATION

DATE DRILLED JULY - AUG 1966

SCALE OF LOG 1" = 40' LOGGED BY MOH DATE Aug 17/66

HOLE NO. 66-A-1 DEPTH 501

COLLAR ELEVATION CORE SIZE AX INCLINATION TESTS

BEARING 180 (MAG OR TRUE) DIP 45

CO-ORDINATES 16+00 N. 216+00 4W

SURFACE OR UNDERGROUND

TOTAL RECOVERY 427' x $\frac{100}{476} = 89.6\%$

ROCK TYPES AND ALTERATION	MINERALIZATION AND STRUCTURES	FOOTAGE BLOCKS ft RECOVERY	SAMPLE NO.	INTERVAL								
				FROM	TO							
OVERBURDEN to 24' CASING to 30'		24										
<u>PHYLLITE</u> Light to dark grey Thin bedded, < 1/4" Variable graphite content.	Bedding variable 40° to 70° to core axis, 60° most common. Minor folding within beds. A few scattered crystals v.f.g. indigenous pyrite.	13.5										
40 Increased graphite. Colour generally dark grey-black. Six qtz bands up to 6" thick. Minor chlorite & talc developed around qtz.	Bedding 50° to 60° to core axis. Minor shear zone @ 68°.	33.5										
80 Phyllite, as above.		27										
120 115-120 less graphitic	115-120 foliation changes from 60° to near // core axis.	117										
Black, very graphitic Mainly Qtz & minor graphitic phyllite.	Foliation 75° to core axis. Minor pyrite	33										
<u>PHYLLITE</u> Black, very graphitic. Some qtz bands 1"-2" size.	Foliation irregular.	157										
160 	Foliation 60° to core axis.	39										
200 	Foliation 40° to 75° to core, but generally 60°. Foliation locally highly contorted. Graphite locally well developed. Scattered pyrite blobs, largest ~ 1/2".	C										
240		40										

00-258

ANVIL MINING CORPORATION LIMITED Whitehorse, Yukon

PROPERTY NAME ACE. HOLE NO. 66-A-1. SCALE OF LOG ... 1" = 40' ...

ROCK TYPES AND ALTERATION	MINERALIZATION AND STRUCTURES	FOOTAGE BLOCKS	ft. % RECOVERY	SAMPLE NO.	INTERVAL							
					FROM	TO						
<p><u>PHYLLITE</u> Gray black, thin bedded. Graphitic, some well developed.</p> <p>Qtz bands from hairline to 3". Blk-white striped appearance</p>	<p>Foliation generally 60° to core axis, locally variable.</p> <p>Widely scattered pyrite blebs.</p>	294 279	38									
280 "	"	310	C									
320 "	"	355	C									
360 Slightly less graphitic.	"	400	38									
400 Greatly increased graphite ~ 400 to end of hole. Locally could more properly be called graphite schist. Variable amounts of quartz banding.	"	437	36									
440 "	"	478	38									
480 "	<p>Foliation 80° to core axis 487-490.</p> <p>Foliation 65° at 495.</p>		"									
501 END OF HOLE												

DD-258

Whitehorse, Yukon

PROPERTY NAME ACE

COLLAR ELEVATION CORE SIZE Ax INCLINATION TESTS

LOCATION

BEARING 180 (MAG OR TRUE) DIP 60

DATE DRILLED August 1966

CO-ORDINATES 9+00 N. 192+00 W.

SCALE OF LOG 1" = 40' LOGGED BY MOH DATE SEPT 3/66

SURFACE OR UNDERGROUND

TOTAL RECOVERY 373' = 77.1%

ROCK TYPES AND ALTERATION	MINERALIZATION AND STRUCTURES	FOOTAGE BLOCKS	ft. RECOVERY	SAMPLE		INTERVAL								
				NO.	FROM TO									
OVER BURDEN														
19 <u>PHYLLITE</u> Light grey, slightly graphitic. Limy. ~ 30% of recovered core is qtz & calcite.	Foliation 50° to core axis. Traces po.	19 24 27 29 32 36 40	12											
40 Limy. Lt to dark grey. Graphitic. "Bedding" surfaces have spotted appearance, original sediment may have been granular.	Foliation 25° to core axis. Traces po.	46 51 55 61 66 70 74 80	13											
80 Dark grey to black, soft, graphitic. Limy.	Foliation very irregular, locally very indistinct. Traces po.	82 96 100 110 113 118	22											
120 Grey with irregular white quartz & calcite. Locally graphitic. Limy.	Foliation very irregular with considerable brecciation. Traces po.	123 126 131 135 141 143	30											
160 " " Foliation accentuated by very thin qtz & calcite layers. Core becoming less broken.	Foliation 60° to core axis, locally very irregular. Traces po.	157 164 173 178 189 194	23											
200 " "	Foliation 60 to core axis. Traces po.	206 216 226 233 240	33											

DD-22B

ROCK TYPES AND ALTERATION	MINERALIZATION AND STRUCTURES	FOOTAGE BLOCKS	RECOVERY	SAMPLE INTERVAL							
				SAMPLE NO.	INTERVAL FROM TO						
<p><u>PHYLLITE</u> Grey with abundant bands of white calcite & qtz from hairline to 8" thick. Minor graphite.</p>	<p>Foliation generally 55° to core axis, with much local distortion and shearing.</p> <p>scattered po. blebs.</p>	<p>248 251 261 266 271</p>	<p>37</p>								
<p>280</p>		<p>281 291 301 311</p>	<p>C</p>								
<p>320</p>		<p>320 330 339 346 356</p>	<p>C</p>								
<p>360</p>		<p>366 375 379 386 389 391 396</p>	<p>C</p>								
<p>400</p>	<p>Foliation 40° to core at 380', 25° from 390-405</p> <p>Blebs & str. py in graphitic sections & in calcite bands.</p> <p>Becoming more graphitic.</p>	<p>405 407 412 417 419 422 432 439</p>	<p>C</p>								
<p>440</p>	<p>Foliation 55° to core axis from 407</p>	<p>442 447 451 453</p>	<p>C</p>								
<p>480</p>	<p>Foliation 70° to core axis.</p>	<p>461 467 475 477</p>	<p>35</p>								
<p>503</p>	<p>Very graphitic 494-503</p>	<p>486 494 497</p>	<p>8</p>								
	<p>END OF HOLE</p>	<p>503</p>									

DD-355

AL MINING CORPORATION LIMITED Whitehorse, Yukon
 PROPERTY NAME ACE..... HOLE NO. 66-A-3

SCALE OF LOG 1" = 40'

ROCK TYPES AND ALTERATION	MINERALIZATION AND STRUCTURES	FOOTAGE BLOCKS	F ₁ RECOVERY	SAMPLE INTERVAL							
				NO.	FROM TO						
280 PHYLLITE SERICITIC, GREY, GENERALLY SOFT. some short quartz rich sections.	Core very broken. "Sand" 272-279 Minor po throughout.	242 247 255 259 263 265 269 272 274 279	25								
320 "	Foliation generally 45° Minor po.	283 287 292 295 299 303 307 311 315 319	17								
360 "	"	321 323 333 343 347 352 354 359	30								
400 "	"	369 371 378 383 387 397	33								
440 Sections mainly qtz up to 3' in length.	Foliation locally very contorted, otherwise 45° to core axis. Minor pyrite. Po blebs up to 1/8" along foliation.	407 417 421 426 434	40								
480	Foliation 50° to core axis Blebs po mainly lying along foliation.	441 449 459 469 477	40								
502	"	487 491 493 498 502	15								
	END OF HOLE										

DD-257

ANVIL MINING CORPORATION LIMITED

Whitehorse, Yukon

PROPERTY NAME ACE ZONE

LOCATION NORTH EAST OF MOUNT MYE, TAY RIVER MAP, YUKON

DATE DRILLED SEPT 29th to SEPT 29, 1966

SCALE OF LOG 1" = 40' LOGGED BY D.M DATE OCT 1/66

HOLE NO. 66-A-4 DEPTH 460'

COLLAR ELEVATION _____ CORE SIZE Ax INCLINATION TESTS

BEARING _____ (MAG OR TRUE DIP _____)

CO-ORDINATES _____ N. _____ E.

SURFACE OR UNDERGROUND _____

TOTAL RECOVERY $\frac{317.5}{377.0} = 84.2\%$

ROCK TYPES AND ALTERATION	MINERALIZATION AND STRUCTURES	FOOTAGE BLOCKS	% RECOVERY	SAMPLE NO.	INTERVAL								
					FROM	TO							
0-83 OVERBURDEN													
83-141 GRAPHITIC PHYLLITE: medium dark grey, quartzitic, little or no mineralization	Foliation: 80-120: -45° 102-122 Broken core	82 89 93 97 102 105 113	4.0 C 3.5 3.0 6.0 3.6 C										
141-300 QUARTZITIC PHYLLITE medium light grey, chloritic sections	Foliation: 120 to 160: -45°	118 122 127 129 135 141 146 156 160	C C C C 5.0 C 9.0 C										
	Foliation: 160-200: -35° 160-175 Broken core	166 170 175 179 189 192	5.0 3.0 4.6 C C C										
	Foliation: 200 to 240: -35°	202 212 216 220 230 236	C C C 9.0 4.0 7.0										

00-20

