



MEMORANDUM

NOTE DE SERVICE

Joanne

CONFIDENTIAL

TO
A

SUPERVISING MINING RECORDER

FROM
DE

MINING RECORDER - WHITEHORSE

SUBJECT
OBJET

Herewith your copy of Diamond Drill Logs and information submitted in support of assessment work.

105-K-6 Cyprus Anvil Mining Corporation.

FARO 49

Certificates of Work and other supporting data will be forwarded when completed.

B.E. Sias
Mining Recorder
Whitehorse Mining District

cc: Geology Section
Attn: M. Marchand

FARO 83

92371

CYPRUS ANVIL MINING CORPORATION

AUGUST 1979

ROSE CROBT

1 HOLE - 1481 FT

105-K-6

FARO 49 92235

CYPRUS ANVIL MINING CORPORATION

AUGUST 1979

1 HOLE - 1597 FT.

FARO 86 ~~————~~

92374

CYPRUS ANVIL MINING CORPORATION

JULY 1979

ROSE CREEK AREA

1 HOLE - 1601 FT

105-K-6



CYPRUS ANVIL MINING CORPORATION

DIAMOND DRILL CORE LOG



Hole Number: 79-F-01

Fabric Orientation Diagram:

Project: Anvil

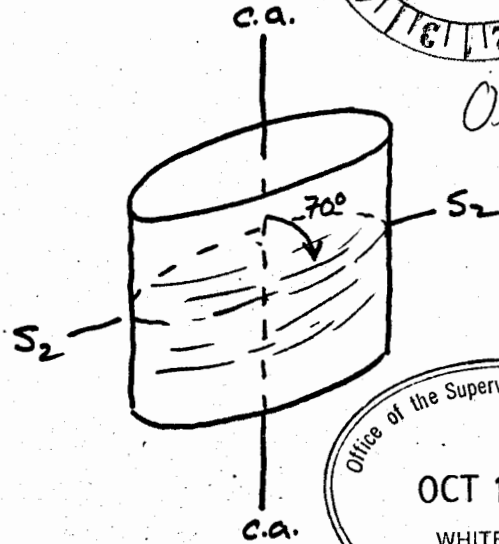
Location: E-6 (W. Faro Grid)

Claim: FARO 86

Terr. Plane Co-ords.: _____ N

_____ E

Grid Co-ords.: L156W 29+00N



091240



Inclination: _____

Elevation: _____

All symmetry determinations looking

NW with S₂ dipping

SW with dip azimuth 210°

Total Depth: 1601 ft.

Purpose: Hinge line ID target on short limb of Faro F₁ Antiform

Logged by: D. S. Jennings Date(s) Logged: July 28-29th, 1979

Drilling Contractor:	Arctic Diamond Drilling Core:	Size	From	To	Collar Cased and Capped:
		<u>NQ</u>	<u>0</u>	<u>1601</u>	<u>No</u>
		_____	_____	_____	
		_____	_____	_____	

Started: July 18/79 Completed: July 29/79

SUMMARY LOGDDH 79-F-01Metres

0.0 - 23.9		Overburden
23.9 - 68.8	1D6	Weakly carbonaceous muscovite-biotite-schist clots of starolite-garnet-andalusite.
68.8 - 85.8	1F8	Tuffaceous metabasite-calc-silicate assemblage.
85.8 - 128.4	1D6/0	Weakly carbonaceous andalusite-muscovite- biotite schist.
128.4 - 130.6	0E2	Quartz-biotite-hornblende dyke.
130.6 - 159.0	1D0	Carbonaceous andalusite-muscovite-biotite schist.
159.0 - 160.3	1F8	Tuffaceous calcareous calc-silicate.
160.3 - 196.6	1D0	Carbonaceous andalusite-muscovite-biotite schist.
196.0 - 203.5	3A0	Carbonaceous calc-silicate assemblage, probably Mt. Mye equivalent.
203.5 - 215.6	3D4	Calcareous tuffaceous calc-silicate assemblage.
215.6 - 251.5	3D4/4-8	Calc-silicate and minor tactite bands.
251.5 - 251.9	0C3	Tourmaline bearing diorite porphyry dyke.
251.9 - 253.1	3D4	Calc-silicate assemblage.
253.4 - 337.6	3D2/4	Calc-silicate tactite assemblage typical green-red bordered calcareous lithologies.
337.6 - 343.4	0E2	Hornblende diorite porphyry dyke.
343.4 - 345.8	303	Calc-silicate.
345.8 - 346.2	0C0	Quartz diorite porphyry.
346.2 - 386.5	3D4	Calcareous calc-silicate assemblage.
386.5 - 387.0	0C0	Quartz diorite porphyry.
387.0 - 388.4	3D4	Typical banded calc-silicate.
388.4 - 390.4	0E8	Porphyritic biotite-quartz diorite.
390.4 - 393.2	3D4	Banded calc-silicate.
393.2 - 395.3	0D9	Altered quartz biotite diorite.

SUMMARY LOG
DDH 79-F-01

Metres

395.3 - 400.9	3D2	Non-calcareous calc-silicate.
400.9 - 402.0	0C0	Quartz monzonite pegmatite dyke.
402.0 - 407.3	3D2/8	Dolomitic calc-silicate.
407.3 - 415.2	0E2	Porphyritic quartz diorite.
415.2 - 434.5	D4/2	Banded calcareous and non-calcareous calc-silicate.
434.5 - 442.8	0C0	Quartz monzonite.
442.8 - 443.2	3D8	Chloritic calc-silicate.
443.2 - 447.6	0E8/9	Variably altered porphyritic quartz-biotite diorite.
447.6 - 448.0	3D4	Altered calc-silicate.
448.0 - 488.0	0B2	Porphyritic biotite-quartz monzonite.

END OF HOLE



CYPRUS ANVIL MINING CORPORATION

091240

DIAMOND DRILL CORE LOG

Hole Number: 79-F-02

Fabric Orientation Diagram:

Project: Faro

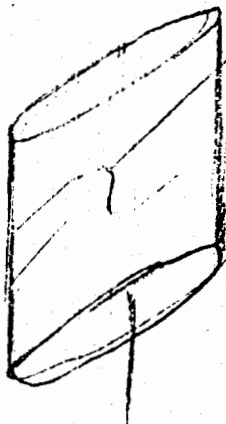
Location: E-6 W. Faro Grid

Claim: FARO 83

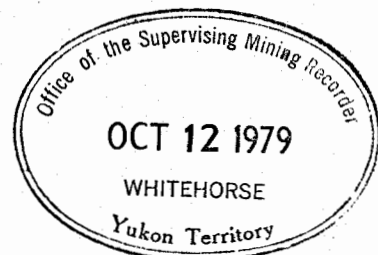
Terr. Plane Co-ords.: _____ N

_____ E

Grid Co-ords.: Line 140W 3+00N



S4 200°



Inclination: _____

All symmetry determinations looking

NW with S₄ dipping

Elevation: _____

SW with dip azimuth 200°.

Total Depth: 451.4 metres

Purpose: Test ID Faro antiform

Logged by: J. G. Simpson

Date(s) Logged: Aug. 13 and 14th, 1979

Drilling Contractor: Arctic Diamond Drilling Core: _____ Collar Cased and Capped: _____

Size	From	To
<u>NQ</u>	<u>0</u>	<u>451.4</u>
_____	_____	_____
_____	_____	_____

Started: Aug. 2/79 Completed: Aug. 13/79

SUMMARY LOG

DDH 79-F-02

Metres

0.0 - 19.1		Overburden
19.1 - 39.4	LD0	Weathered, altered andalusite muscovite-biotite schist.
39.4 - 96.9	LD6	Clotted, slightly carbonaceous andalusite-muscovite-biotite schist.
96.9 - 100.4	LH3	Calcareous tuffaceous schist.
100.4 - 113.4	LD0	Carbonaceous andalusite muscovite-biotite schist.
113.4 - 115.7	LH3	Calcareous chloritic tuff.
115.7 - 116.7	LD0	Carbonaceous andalusite-muscovite-biotite schist.
116.7 - 120.7	LH3	Calcareous chloritic laminar banded schist.
120.7 - 132.2	LD0	Ditto above
132.2 - 136.2	LH3	Ditto above.
136.2 - 162.2	LD0	Ditto above.
162.2 - 163.6	LH3	Ditto above.
163.6 - 185.0	LD0/4	Carbonaceous muscovite-biotite chloritic schist some garnet and clots.
185.0 - 205.0	LCD	Transition from carbonaceous andalusite schist to feldspathic quartz muscovite-biotite schist.
205.0 - 208.4	LH3	Chloritic slightly calcareous schist.
208.4 - 218.5	LCD	Carbonaceous andalusite chlorite muscovite schist.
218.5 - 235.3	LD0	Quartz muscovite-biotite schist.
235.3 - 250.4	LD0/6	Andalusite, carbonaceous, muscovite-biotite schist.
250.4 - 255.5	LCD	Transition andalusite schist to quartz muscovite-biotite schist.
255.5 - 256.6	Q/O	Quartz vein.
256.6 - 266.9	LCD	Transition zone quartz muscovite biotite schist minor andalusite.

SUMMARY LOG
DDH 79-F-02

Metres

266.9 - 274.5	100	Quartz-muscovite-biotite schist.
274.5 - 275.4		Clotted andalusite quartz biotite muscovite schist.
275.4 - 289.0	1CD/4	Quartz-muscovite-biotite schist, minor garnet-andalusite clots, some bleaching and alteration.
289.0 - 306.4	100	Quartz-muscovite-biotite schist.
306.4 - 306.9	1H3	Calcareous chloritic tuffaceous schist.
306.9 - 307.4	100	Quartz muscovite-biotite schist
307.4 - 309.0	1D6	Clotted andalusite quartz-muscovite-biotite schist
309.0 - 310.4	100	Quartz-muscovite-biotite schist.
310.4 - 314.2	1H0	Banded calcareous calc-silicate chloritic facies.
314.2 - 386.2	100/4	Quartz-muscovite-biotite schist, minor andalusite bands, some alteration in last two metres, adjacent intrusive.
386.2 - 451.4	000	Fine to coarse grained hornblende quartz diorite.

END OF HOLE



CYPRUS ANVIL MINING CORPORATION

DIAMOND DRILL CORE LOG

021240

Hole Number: 79-F-03

Fabric Orientation Diagram:

Project: Anvil

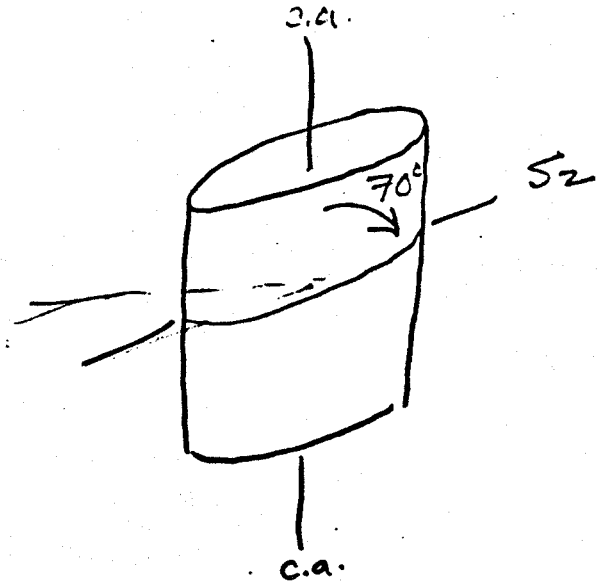
Location: E-6

Claim: FARO 49

Terr. Plane Co-ords.: _____ N

_____ E

Grid Co-ords.: L112W 11+00S



Inclination: _____

All symmetry determinations looking

NW with S₂ dipping

Elevation: _____

SW with dip azimuth 210.

Total Depth: 486.8 metres

Purpose: Faro F₁ Upper limb

Logged by: J.G. Simpson/D. Jennings

Date(s) Logged: August 31, 1979

Drilling Contractor:	<u>Arctic Diamond Drilling</u>	Core:	Size	From	To	Collar Cased and Capped: _____
			<u>NQ</u>	<u>0</u>	<u>48.6. m.</u>	

Started: August 14/79 Completed: August 26/79

SUMMARY LOG

DDH 79-F-03

Metres

0.0 - 12.5		Overburden
12.5 - 62.8	1DO	Carbonaceous, biotite-muscovite-andalusite schist.
62.8 - 63.4	1H3	Calcareous, thinly banded, light green and dark brown calc-silicates.
63.4 - 79.8	1DO	Carbonaceous, biotite-muscovite-andalusite schist.
79.8 - 202.1	1CD	Weakly gneissose, non-carbonaceous biotite-muscovite ± andalusite schists with prominent biotite-andalusite patches.
202.1 - 203.9	1HO	Finely crystalline, medium bluish green metabasite equivalent to 3D8.
203.9 - 204.2	OE6	Brown, hornblende diorite porphyritic dike.
204.2 - 205.1	1CD64	Muscovite rich andalusite schist.
205.1 - 205.4	1HO	Finely crystalline, medium bluish green metabasite equivalent 3D8.
205.4 - 229.5	1CD	Gneissose, clotted, non-carbonaceous biotite-muscovite ± andalusite schists.
229.5 - 230.1	OFO	Porphyritic hornblende, smoky quartz diorite to granodiorite dike.
230.1 - 257.2	1CD	As above.
257.2 - 260.3	1FO	Non-calcareous metabasites or tuffs similar to 1HO above.
260.3 - 275.2	1CO	Strongly banded, biotite-muscovite gneisses and schists.
275.2 - 278.3	1FO	As above.
278.3 - 320.3	1CO	As above.
320.3 - 329.5	OE8	Porphyritic, hornblende-biotite diorite.
329.5 - 366.4	1CO	As above.
366.4 - 367.9	OE8	As above.
367.9 - 379.8	1CO	Strongly hornfelsed, biotite-muscovite gneiss.

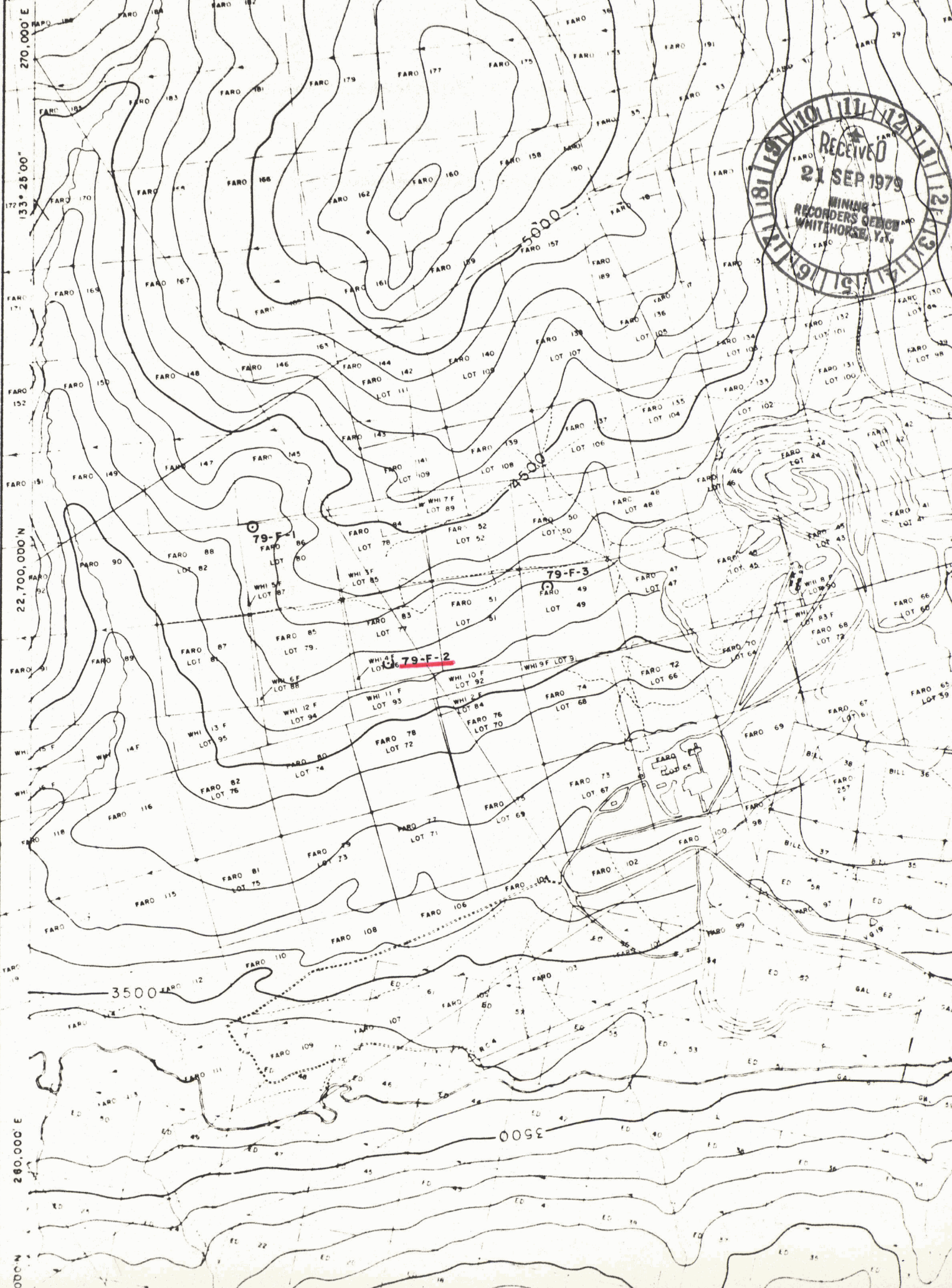
SUMMARY LOG
DDH 79-F-03

Metres

379.8 - 384.0	OOO	Zone of silica "flooding" and kaolinitization above diorite plug.
384.0 - 385.3	lCO	Strongly hornfelsed, biotite-muscovite gneiss.
385.3 - 434.9	OE8	Porphyritic, hornblende-biotite diorite.
434.9 - 438.0	lCO	Quartz- feldspathic biotite-muscovite gneiss foliaform screen in hornblende diorite.
438.0 - 486.8	OE8	As above.

END OF HOLE

MP



RECEIVED
21 SEP 1979
MINING
RECORDERS OFFICE
WHITBORO, VT.

270,000' E
133° 25' 00"
22,700,000' N
280,000' E

3500

5000

3500

79-F-1

79-F-3

79-F-2





ARCTIC DIAMOND DRILLING LTD.



184 Industrial Road, Whitehorse, Yukon Y1A 2V1 (403) 667-6434

B/Fwd.....174,430.25

Hole #V-28-R-90'xNQ

Overburden

0-50=50ft @ 19.75 per ft.

987.50

Core Drilling

50-122 =72ft @ 19.75 per ft

1422.00

2409.50

Hole #79-BC-1-90'xNQ

Overburden

214-320 = 106ft @ 19.75 per ft.

2093.50

Core Drilling

320-1025=705ft @ 19.75 per ft.

13923.75

Testing

10 Man hrs @ 17.50 per hr

175.00

5 Machine hrs @ 9.50 per hr

47.50

222.50

Standby waiting for test

16 Man hrs @ 17.50 per hr

280.00

16519.75

Hole #79-FO-2-90'xNQ

Overburden

0-59=59ft @ 19.75 per ft

1165.25

Core Drilling

59-1481=1422 ft @ 19.75 per ft.

28084.50

Testing

10½ Man hrs @17.50 per hr.

183.75

5 Machine hrs @ 9.50 per hr.

47.50

231.25

29481.00

Hole # 79-FO-3-90'xNQ

Overburden

0-35 = 35ft @ 19.75 per ft.

691.25

Core Drilling

35-534=499 ft @ 19.75 per ft.

9855.25

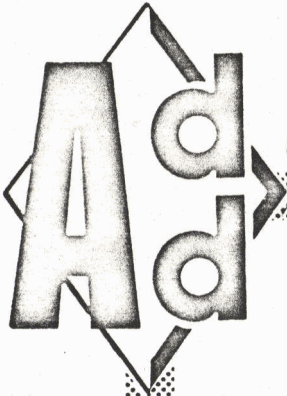
10546.50

Camp facilities- Meals - Aug1-15-1979

86 Man days @ 20.00 per day

1720.00

235,07.00



ARCTIC DIAMOND DRILLING LTD.

184 Industrial Road, Whitehorse, Yukon Y1A 2V1 (403) 667-6434

INVOICE # 7934
September 5, 1979.

IN ACCOUNT WITH:

CYPRUS ANVIL MINING CORPORATION
330 - 353 Burrard Street
Vancouver, B.C.

WORK DONE DURING THE PERIOD
AUGUST 14 - AUGUST 26, 1979



Drilling Charges for Hole # 79-FO-3

Hole #79-FO--3-90'xNQ

Overburden

0-35=35 ft. @ \$19.75 per foot \$691.75

Core Drilling

35-1597 = 1562 ft @\$19.75 per foot 30849.50

Testing

16 Man hours @ 17.50 per hour 280.00

8 Machine hrs @\$9.50 per hour 76.00

356.00

\$31,896.75