

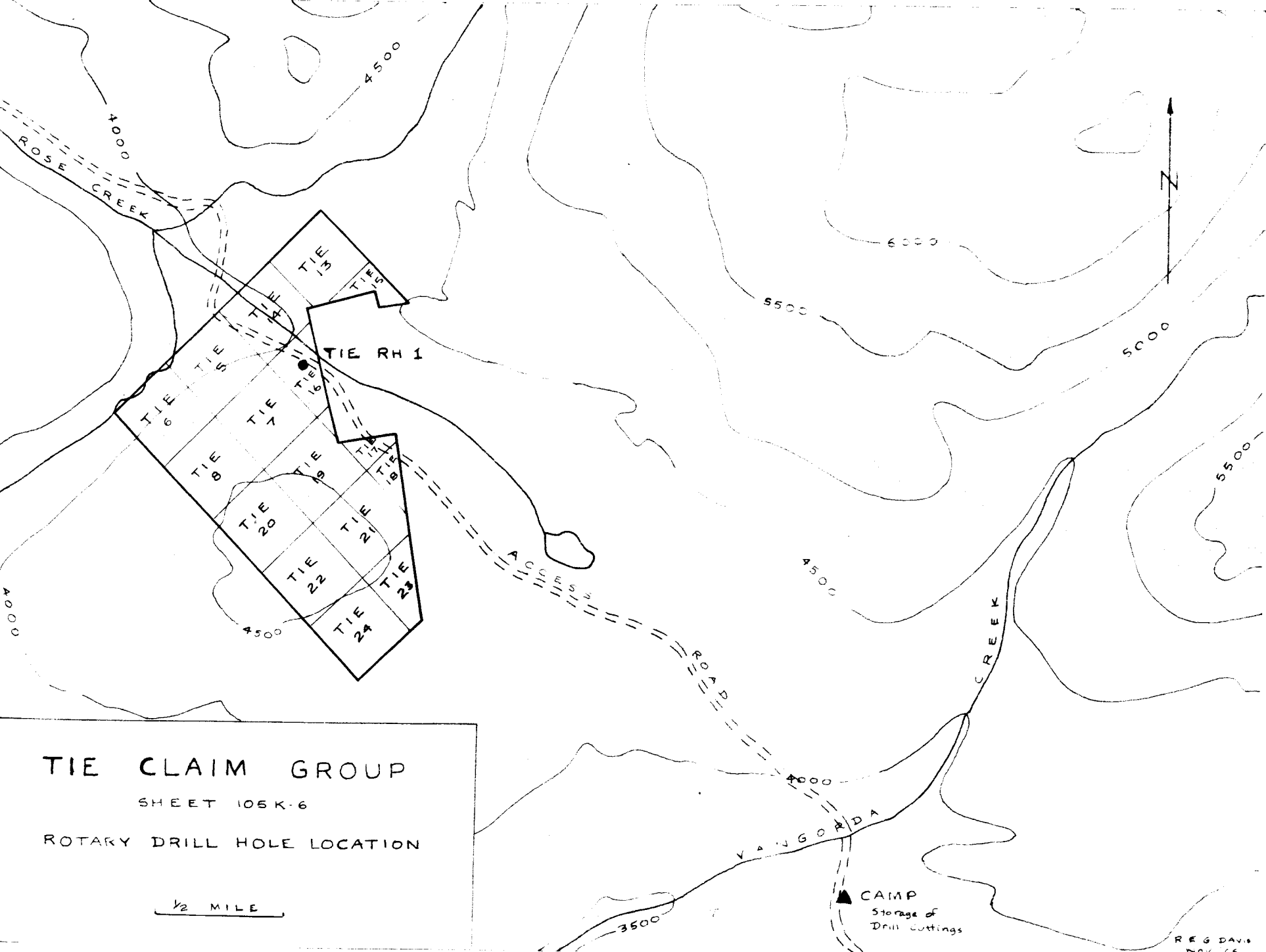
**ROTARY DRILLING REPORT
TIE CLAIM GROUP
WHITTHORSE MINING DIVISION**

MAP SHEET 105 K6

**Lat. 62° 17' North
Long. 133° 15' West**

November 1965

R.E. Gordon Davis



TIE CLAIM GROUP

SHEET 105K-6

ROTARY DRILL HOLE LOCATION

1/2 MILE

REG DAVIS
707 66

DD-195-

CONTENTS

INTRODUCTION **General**
 Drilling Method
 Target Area

RESULTS AND CONCLUSIONS

COSTS

DISTRIBUTION OF COSTS FOR REPRESENTATION WORK

LOCATION MAP

ROTARY DRILL HOLE LOG

L.

INTRODUCTION

General

On November 11, 1965 exploratory rotary drilling commenced on the Pelly River Mine's Tie Mineral Claim Group, located in the Vangorda Creek area of the Central Yukon, 130 miles northeast of Whitehorse. On November 15th, the anniversary date of the claims, the first hole was completed to a depth of 420 feet.

Drilling Method

The drill used is a conventional Mayhew 1000 seismic shot hole rotary drill under contract from United Geophysical Company of America, Calgary Alberta. Both the drill and water tank are mounted on Nedwell 110 tracked carriers. A 4½ inch vertical hole was drilled using a tri-cone rock bit. The hole was collared in bedrock and no casing was necessary. Drill cuttings were collected from the overflow in a sluice box and sampled in 10 foot sections.

Target Area

The exploratory drilling program on the Tie Claim Group was based on airborne and ground electromagnetic surveys which indicated an electrical conductor trending east northeast, from 2500 to 3000 feet long and on strike with a known massive sulphide deposit on the adjacent Firth Claim Group of Vangorda Mines Limited. The first hole TRH 1, is on the Tie 16 Mineral Claim.

The target area is underlain by early Paleozoic sericite, chlorite and graphite schist within a few thousand feet of a contact with granitic rocks of the Anvil Range intrusive batholith. Formation trends within the schist are generally northwest-southwest with slight to moderate south-westerly dip angles.

RESULTS AND CONCLUSIONS

Tie RH 1 intersected a section made up primarily of sericite schist containing some highly siliceous and chloritic members. From 170 to 250 feet, the schist was highly graphitic. Other than minute traces of pyrrhotite and galena identified in pannings the only sulphide mineral-

ization encountered was fine grained subhedral to euhedral pyrite. In general the pyrite content rarely exceeds a few percent by volume of the drill cuttings however within the graphitic member pyrite content is as high as from 10 to 15 percent. No samples contained sufficient quantities of base metals sulphides to justify assaying. The 80 foot graphitic section in the hole accounts for the conductor as indicated by the electromagnetic survey. Because there is a close relationship between graphitic schist and massive sulphide deposits containing significant lead, zinc and copper values in the Vangorda Creek area, several additional rotary holes will be drilled to test the conductor on the Tie Claim Group.

COSTS

420 feet of 4 1/2 inch hole at \$9.00 per foot..... \$3780.00

DISTRIBUTION OF COSTS FOR REPRESENTATION WORK

Claims to be held for 2 years:

Claim	Grant Number
Tie 8	85728
13	85731
15	85733
17	85735
19	85737
18	85738
20	85738
21	85739
22	85740
23	85741
24	85742

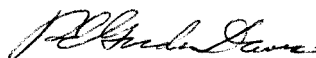
Claims to be held for 3 years

Tie 5	85723
6	85724
7	85725
14	85732
16	85734

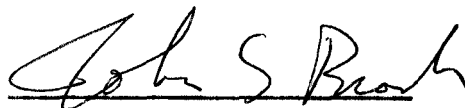
Total **37 claim years**

AFFIDAVIT SUPPORTING STATEMENT OF DISTRIBUTION OF COSTS

I, R.E. Gordon Davis of Whitehorse, Y.T., do make oath and say that to the best of my knowledge and belief, the cost of representation work done by rotary drilling on the Tie Mineral Claims is truly stated in this report.

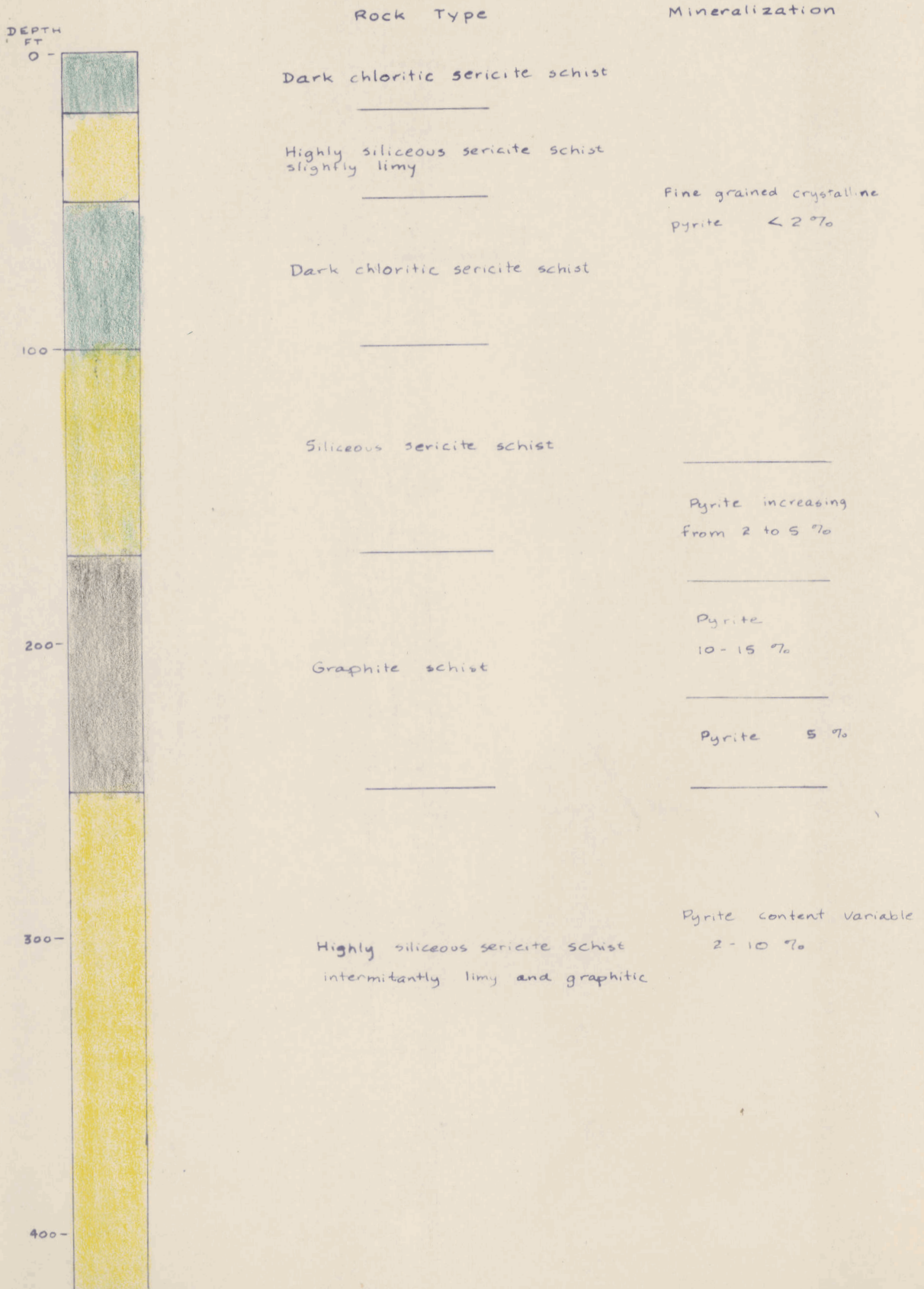


R.E. Gordon Davis



A Commissioner for taking oaths
in and for the Yukon Territory

TIE ROTARY HOLE 1 Log



ROTARY DRILLING
TIE CLAIM GROUP

by

R.S. Adamson, P. Eng.

August 1966

WHITEHORSE TEL.: 667-4343, 667-7114
AREA CODE: 403, TELEX: 049-834
CABLE ADDRESS: ANVLMINE

DD-188
VANCOUVER TEL.: 683-9304
AREA CODE: 604, TELEX: 04-50237
CABLE ADDRESS: ANVLZINC

ANVIL MINING CORPORATION LIMITED

P.O. BOX 2470
103 POLARIS BLOCK
WHITEHORSE, YUKON TERRITORY
CANADA

VANCOUVER OFFICE:
510 WEST HASTINGS STREET
VANCOUVER 2, B.C.
CANADA

August 16, 1966

Mr. G. McIntyre
Chief Mining Recorder
Federal Building
Whitehorse, Yukon Territory

Dear Mr. McIntyre:

The accompanying report is submitted to
apply as assessment work on the TIE Group and surrounding
claims of the SUN, RICH and GAL Groups.

The area covered is on claim map sheet
105 K-6.

Yours truly,

R.S. Adamson, P.Eng.
Geologist for
ANVIL MINING CORPORATION LIMITED

091233

ROTARY DRILLING

TIE CLAIM GROUP

Rotary Drilling was carried out on the TIE Claim Group by DYNASTY EXPLORATIONS LTD., during November of 1965.

Four holes were drilled with a view to intersecting massive sulphides on previously established geophysical anomalies detected from airborne surveys and substantiated by further geophysical ground surveys.

Total footage involved was 1240 feet. Minor sulphides were intersected so that no assaying was done on the drill cuttings.

Boards with the cuttings are in the warehouse of Anvil Mining Corporation Limited in Whitehorse, Yukon.

TRH 1 (420 ft) was already submitted for assessment on the TIE Group in November of 1965, leaving three holes totalling 820 feet to be submitted later.

STATEMENT OF COSTS

<u>ROTARY HOLE</u>	<u>FOOTAGE</u>	<u>RATE</u>	<u>COST</u>
TRH 2	370	\$9 per ft.	\$3330
TRH 3	220	\$9 per ft.	\$1980
TRH 4	230	\$9 per ft.	\$2070
	<u>820</u>		<u>\$7380</u>

ARCTIC DIAMOND DRILLING LTD.

P.O. Box 32045 184 Industrial Road
Whitehorse, Yukon Territory Y1A 2V1

RECEIVED

730 - 510 W. Hastings Street.
Vancouver, B.C.

Marwell Area - Phone 668-2440x 667-6434

APR 15 1974

Phone 688-3328

FARO

March 31, 1974
INVOICE #1541

IN ACCOUNT WITH:

Anvil Mining Corporation Ltd.,
Box 1000,
Faro, Yukon Terr.

Drilling charges March 16 - 31, 1974 (Swim Lake Project)

Moving & Setting Up
22 man hours @ \$8.50 per hour = \$ 187.00

Hole: X-74-01 x 90° x BQ
Overburden
72 - 185 = 113 feet @ \$10.50 per foot = \$1,186.50
Coring
185 - 500 = 315 ft. @ \$10.50 per ft. = \$3,307.50
500 - 623 = 123 ft. @ \$11.00 per ft. = 1,353.00 \$4,660.50
Reaming Casing
185 - 187 = 2 feet @ \$8.00 per foot = \$ 16.00 \$5,863.00

Hole: X-74-04 x 90° x BQ
Moving
94 man hours @ \$8.50 per hour = \$ 799.00
28 machine hours @ \$7.00 per hour = 196.00 \$ 995.00
Standby
4 man hours @ \$8.50 per hour = \$ 34.00
2 machine hours @ \$7.00 per hour = 14.00 \$ 48.00
Cat Operator
7 man hours @ \$8.50 per hour = \$ 59.50
Installing Casing Through Ice
0 - 117 = 117 feet @ 50¢ per foot = \$ 58.50
Overburden
117 - 208 = 91 feet @ \$10.50 per foot = \$ 955.50
Coring
208 - 500 = 292 ft. @ \$10.50 per foot = \$3,066.00
500 - 726 = 226 feet @ \$11.00 per foot = 2,486.00 \$5,552.00
Reaming Casing
208 - 209 = 1 foot @ \$8.00 per foot = \$ 8.00 \$7,676.50

74x4 -

...../2

021233

ARCTIC DIAMOND DRILLING LTD.

P.O. Box 3204, 184 Industrial Road
Whitehorse, Yukon Territory Y1A 2V1

Marwell Area - Phone ~~668-2440~~ 667-6434

730 - 510 W. Hastings Street,
Vancouver, B.C.

Phone 688-3328

March 15, 1974

INVOICE #1532

APPLY TO 74 X 1

IN ACCOUNT WITH:

Anvil Mining Corporation Ltd.
Box 1000,
Faro, Yukon Terr.

Drilling charges March 3 - 15, 1974 (Swim Lake Project)

Mobilization Charge

Re: Article 12 of Contract - 1/2 x \$2250.00 = \$1,125.00 ✓

Moving In & Setting Up

235 man hours @ \$8.50 per hour = \$1,997.50 ✓

Hole: X-74 - 01 x 90° x BQ

Installing Casing Through Ice

0 - 72 = 72 feet @ 50¢ per foot = \$ 36.00 ✓

D-6 Cat Rental

Mar. 4 - 15/74 - 12 days - 5 days (Contractor) =
7/30 x \$1200.00 per month = \$ 280.00 ✓

Cat Operator

55 man hours @ \$8.50 per hour = \$ 467.50 ✓

John Deere 1010 Rental

Mar. 4 - 15/74 = 12 days = 12/30 x 750.00 per month = \$ 300.00 ✓

Room Charges

J. Duval/R. Leblanc (Faro Hotel #7462/7483)

Mar. 3-13/74 = 11 - 3 days (Contractor) = 8 days @ \$22.00 =
\$176.00

Johnson/McCulloch (Faro Hotel #7486)

Mar. 10-13/74 = 4 days - 1 day (Contractor)
= 3 days @ \$22.00 = 66.00

Sheck (Faro Hotel #7485)

Mar. 10-13/74 = 4 days - 1 day (Contractor) =
3 days @ \$18.00 = 54.00 \$ 296.00 ✓

TIE RH #1 (420')

0 - 20	Sericite schist, 1% sulphide mainly pyrite with lesser pyrrhotite.
20 - 40	Sericite quartz schist, 3% sulphide mainly pyrite with lesser pyrrhotite.
40 - 180	Sericite quartz schist, 40 - 50, 10% sulphides, 50 - 70, 3% sulphides, 70 - 100, 10% sulphides, 100 - 140, 3% sulphides, 140 - 180, 10% sulphides mainly pyrite with minor pyrrhotite.
180 - 250	Graphitic quartz schist, 10% sulphides mainly pyrite with minor pyrrhotite.
250 - 420	Sericite quartz schist, 10% sulphide, mainly pyrite with minor pyrrhotite.

TIE RH#2 (370')

0 - 370	Sericite quartz schist 0 - 20, 3% sulphides, 20 - 70, 10% sulphides, 70 - 120, 15% sulphides, 120 - 200, 7% sulphides, 200 - 210, 4% sulphides, 210 - 260, 7% sulphides, 260 - 290, 10% sulphides, 290 - 320, 7% sulphides, 320 - 370. 0' - 160' sulphides mainly pyrite with lesser pyrrhotite. 160 - 230 mainly pyrite with one half as much pyrrhotite. 230 - 370 mainly pyrite and pyrrhotite in equal amounts.
---------	---

TIE RH#3 (220')

0 - 90	Biotitic quartz schist, 0 - 10 no sulphide, 10 - 20 less than 1%, 20 - 50, 3% sulphide, 50 - 80, 4% sulphide, 80 - 90, 7% sulphide.
90 - 140	Graphitic schist, 7% sulphide.
140 - 200	Quartz sericite schist, 140 - 180, 5% sulphide, 180 - 200, 2% sulphide.
200 - 210	No sample.
210 - 220	Quartz sericite schist, 5% sulphide. Sulphide mainly pyrite with lesser pyrrhotite.

TIE RH #4 (230')

0 - 20	No sample.
20 - 230	Quartz sericite schist, 20 - 40, 5% sulphide, 40 - 180, 10% sulphide, 180 - 230, 5% sulphide. Mainly pyrite with lesser pyrrhotite.

DDH 74-01

- 0-82' No recovery - water and unconsolidated overburden.
- 82-185' Poor recovery - unconsolidated overburden containing boulders.
- 185-300' Dark greenish grey unlaminated chloritic phyllite. Nil sulfides in phyllite. S₂ with about 30° dip. Numerous veins (?) bull quartz intersected with usual chloritic selvodge and variable sulfide content.

- 215-216 No sulfides, white bull qtz. vein or pod
- 235½-236½ Minor pyrrhotite and pyrite
- 270-273 Zone of quartz with ~ 20% pyrrhotite and 1% chalcopyrite between 272 and 273

Near quartz masses S₂ becomes quite steep and erratic but about 10' below the quartz the S₂ dip is more regular at 30-40°. This is probably due to S₂ fln. wrapping around quartz lenses showing mid late or post D₂ timing. In contrast a few thin pre S₂ quartz veins with chloritic selvodges and minor accompanying sulfides occur locally.

- 283½-286 Zone of bull quartz + chlorite pods
- 290-293.5 Zone of bull quartz + chlorite pods w/40% po over 3" @ 292.5
- 298-299 Zone of 30% po

As above where S₂ is regular it dips 30-40° but near quartz it is badly disturbed. Near 299' pyrrhotite and quartz and chlorite rich zone in phyllite.

Near 300' phyllite gradually becomes lighter colored and more quartzose with quartz in lenses along foliation accompanied by minor sulphides.

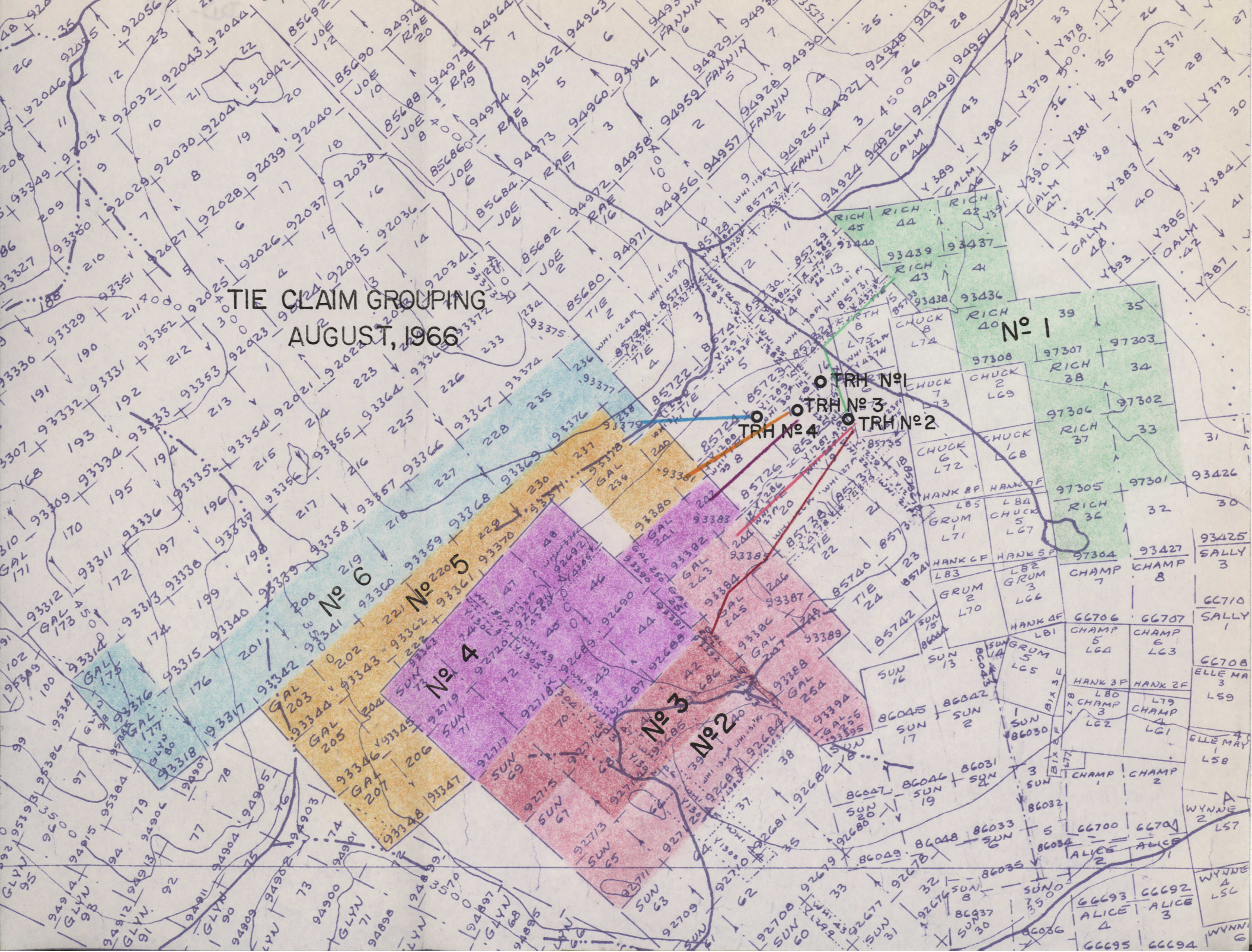
09/233

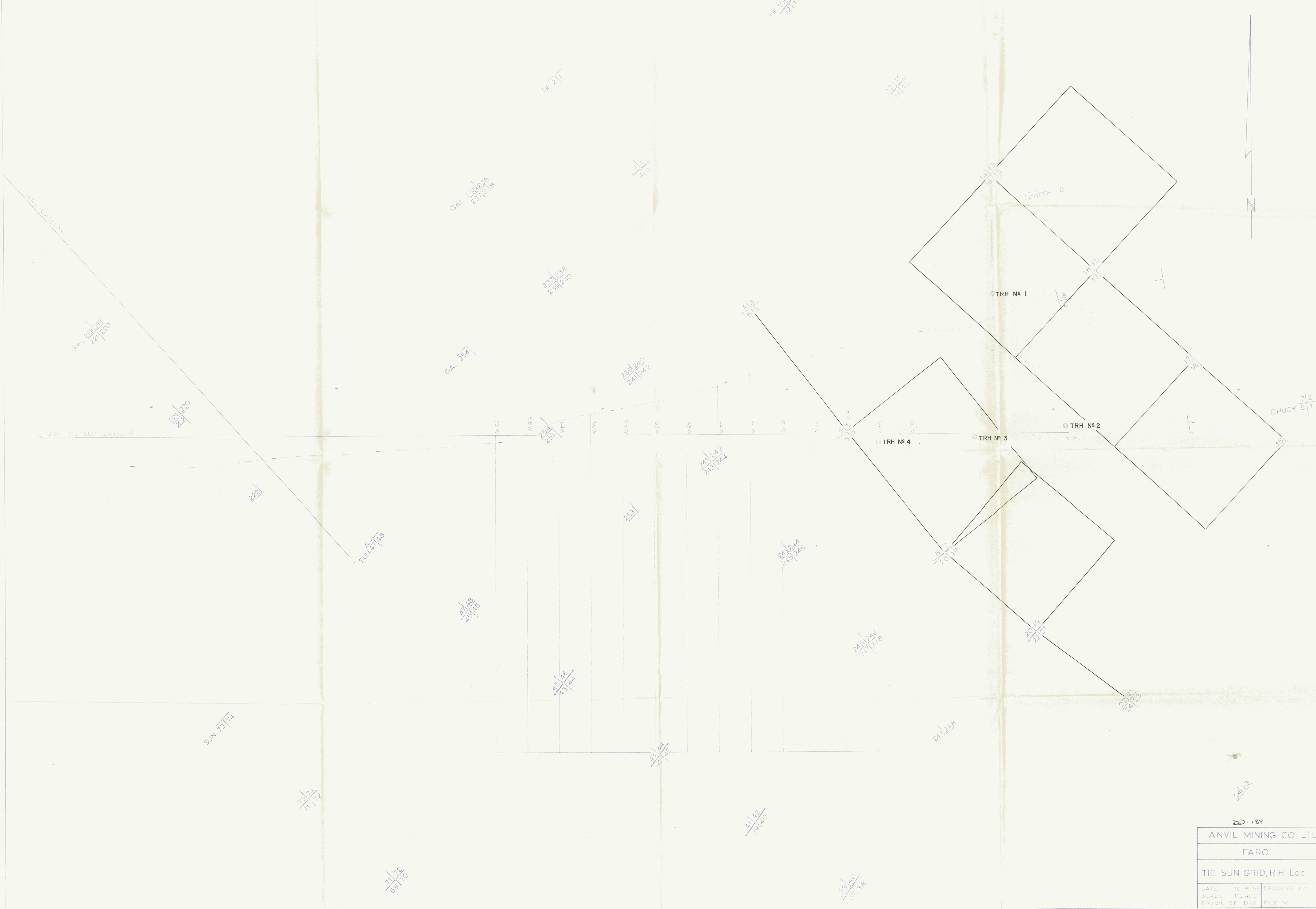
- 300-314.5' Med. grey green, unlaminated chlor. phyll; S_1 wrapped thru many F_2 hinges; only hinges preserved S_1 gen. transposed into S_2 ; S_2 20° to core axis
- 314.5-358.5' Lighter green, more chlor. phyll. interspersed w/many white qtz. veins and pods (post D_2); minor po w/qtz.; white qtz. veins and pods generally foliaform.
- 348-349 30-40% py in silicious, non chlor. phyll.; no PbS/ZnS; mineralization strataform; no po; qtz. not like vein or pod qtz.
- 356-358.5' 10-20% po in siliceous zone
- 358.5-360.0' Post D_2 bxia or gouge with randomly oriented clasts in a chloritic matrix; 5-10% po in clasts and matrix.
- 360-365' Siliceous chloritic phyllite w/some graphitic sections; 1-5% po scattered throughout.
- 361.5-362 10-15% sulfides w/visible cf. Matt Berry PbS/ZnS
- 363-364 Bxia as from 358.5-360.0
- 365-391' Graphitic chloritic phyllite w/bull qtz. pods/veins and 1-2% po diss. throughout; po conc. in siliceous zones S_2 on average $20-30^\circ$ to core axis; S_1 generally has opposing dip @ $40-45^\circ$ to core axis although many sections $S_1 \approx \perp$ eg. 380'; core becomes increasingly graphitic @ about 375' on.

- 391-405' Musc-chlor-graph. phyll.; more musc. rich than above interval; S_1 poorly preserved; S_2 20-30° to core axis; scattered po-py gen. < 1%.
- 405-406.5' Massive py (> 60%) in graph. musc. quartzite; no po or PbS/ZnS; sulfs. strataform.
- 406.5-418.5' Musc. graph. qtzite w/1-10% py; py in most siliceous bands // S_2 ; S_2 20° to core axis.
- 418.5-423' Siliceous chlor. phyll. more massive than at 360-365 but similar w/> 50% po over 4.5' interval; po massive 418.5-420.5; essent. no py, ZnS, PbS w/po; appears as though massive py occurs in musc-graph. qtzites to sil. phyllites while mass po occurs in siliceous chlor. phyllite.
- 423-428' Siliceous chlor. phyll. w/some graph. bands // S_2 ; < 1% po throughout; interval becomes less chloritic toward 425'.
- 428-481' Graphitic musc. chlorite phyll. c.f. 391-405'; S_2 10-35° to core axis; from 430' unit is musc-graph ± (chlor) phyll.; no appreciable sulfides; slightly calc.; not musc. rich enough to be "envelope" rks.
- 481-487.5' Chlor. phyll. w/py bands; 10-20% py ave. throughout interval. No PbS/ZnS/po; weakly foliated.
- 487.5-496' Graphitic chlor. phyll. c.f. 365-391; S_2 10-15% to core axis; 6" band of 60% sulfides py-po-cp @ 495.5'; about 1% cp in this 6" band.

- 496-546' Musc-graph \pm (chlor) phyll. c.f. 428-481; scattered 1" thick bands // S_2 of 30-80% py + po or py; sample @ 518' shows sulfides to be pre D_2 ; also @ 522'; S_2 5° to c.a. S_1 55° to c.a. @ 498.5 both showing same dip direction; numerous white bull qtz. + po pods or veins w/chlor. selvedge from 524'; po-py bands $>$ 50% sulfides @ 527'; 541.5'; minor closely xline blk. ZnS in qtz. vein/pod \approx // S_2 @ 544.5'.
- 546-553' Siliceous chlor \pm (ep) phyll (poorly foliated) w/closely xline white $CaCO_3$ pods; minor py + po $<$ 1% throughout.
- 553-568.5' Qtz-musc-graph. phyll. to qtzite w/ \approx 10% py + po "peppered" throughout interval; some 2-4" zones of mass. sulfides; v. minor PbS/ZnS/cp scattered over interval (see assays); mineralization strataform and pre D_2 ; S_2 5-10 $^\circ$ to c.a.
- 568.5-607' Siliceous chlor phyll c.f. 423-428' w/minor 1" thick po or po + cp bands throughout; one 6" po-ZnS-PbS zone @ 575-575.5 very similar to Matt Berry mineralization in that PbS/ZnS w/po in chlor. phyllites (couldn't tell occurrences apart on basis of core); S_2 gen. horiz.; another zone c.f. Matt Berry 594-594.5'.
- 607-623' Graph-chlor-musc. phyll. c.f. 428-481' becoming more musc. and graph. rich down hole; S_2 10-15 $^\circ$ to c.a.

TIE CLAIM GROUPING
AUGUST, 1966





ANVIL MINING CO., LTD	
FARO	
TIE SUN GRID, R.H. Loc.	
DATE: 10-8-66	DRAWING No.
SCALE: 1" = 400'	
DRAWN BY: D.H.	FILE No.

DD-188

RICH-GAL-SUN ASSESSMENT WORK

MAIN TOTE ROAD

JUNE 1967

105-K-3/6

92698

ANVIL MINING CORPORATION LIMITED

P.O. BOX 2470
103 POLARIS BLOCK
WHITEHORSE, YUKON TERRITORY
CANADA

June 30, 1967

Mr. Gordon A. McIntyre
Mining Recorder & Supervisor of Lands
Department of Northern Affairs and
National Resources
Whitehorse, Yukon Territory

Dear Mr. McIntyre:

The accompanying data is submitted to apply as assessment work on certain claims in RICH, GAL and SUN Groups.

The following is a breakdown of \$25,378.50 spent on tote road within the TIE Group of claims.

Total cost of tote road	
1.82 miles @ 13,944.23/mile	\$ 25,378.50
Allotted to bring TIE Group to a common date of July 1, 1971	<u>\$ 14,300.00</u>
Available for additional assessment	<u>\$ 11,078.50</u>

All claims involved are owned by Anvil Mining Corporation Limited and Pelly River Mines Limited (N.P.L.) and are located in the Vangorda Creek area. The claim area covered is shown on the Mining Recorder's Claim Maps No 105K6 and 105K3.

Very truly yours,



M.O. Hampton
Chief of Exploration

MOH/ew

Enclosure

all minutes read

ANVIL MINING CORPORATION LIMITED

Schedule of Cost of Constructing
Main Access Road

1. Own Equipment - as per attached	\$ 233,427
2. Liard Construction - Cat rental	27,460
3. Nilsson & Lang - Construction of 3 bridges	13,000
4. Culvert - includes freight	9,045
5. General Enterprises Ltd. - building ferry approaches	10,810
6. General Enterprises Ltd. - equipment rental	4,073
7. General Enterprises Ltd. - materials	4,486
8. Supervision etc.	<u>6,000</u>
Cost of main access road	\$ 308,301
Tote road assistance	<u>8,500</u>
Net cost	<u><u>\$ 299,801</u></u>

Fare to Pelly - 21.5 miles

Net cost per mile $\frac{299801.00}{21.5} = \$ 13944.23$

ANVIL MINING CORPORATION LIMITED

Analysis of Equipment Hours Spent
on Main Road Construction

Period Ending	<u>201</u> <u>D8</u>	<u>202</u> <u>D7</u>	<u>203</u> <u>Grader</u>	<u>#1 619C</u> <u>Scraper</u>	<u>#2 619C</u> <u>Scraper</u>
April 22, 1966	562½	456½	162½	145	141
May 20, 1966	320	260½	60	7	7
June 17, 1966	242½	28		10	10
July 15, 1966	494½	432	264½	193	113½
Aug. 12, 1966	150½	304½	283½	216	246
Sept. 9, 1966	268	222½	258½	236	252
Sept. 30, 1966	297	157	130½	158½	216
Oct. Est.	90	90	100	90	90
	<u>2425 hrs</u>	<u>1951 hrs</u>	<u>1259½ hrs</u>	<u>1055½ hrs</u>	<u>1075½ hrs</u>

Rates per
C. Boyd

General Enterprises	<u>35/hr</u>	<u>25/hr</u>	<u>20/hr</u>	<u>35/hr</u>	<u>35/hr</u>
	<u>\$ 84,875</u>	<u>48,775</u>	<u>25,190</u>	<u>36,943</u>	<u>37,644</u>
					<u>233,427</u>

A F F I D A V I T

SUPPORTING STATEMENT OF COSTS
Faro Access Road
April 1966 to October 1966

I, Murray O. Hampton, Chief of Exploration for ANVIL MINING CORPORATION LIMITED, have compiled the Statement of Costs as presented for the FARO Access Road, DO MAKE OATH AND SAY AS FOLLOWS:

That to the best of my knowledge and belief, the Statement of Costs as presented, is true and an accurate representation of expenditures to be applied as representative work on the RICH, GAL and SUN mineral claims.

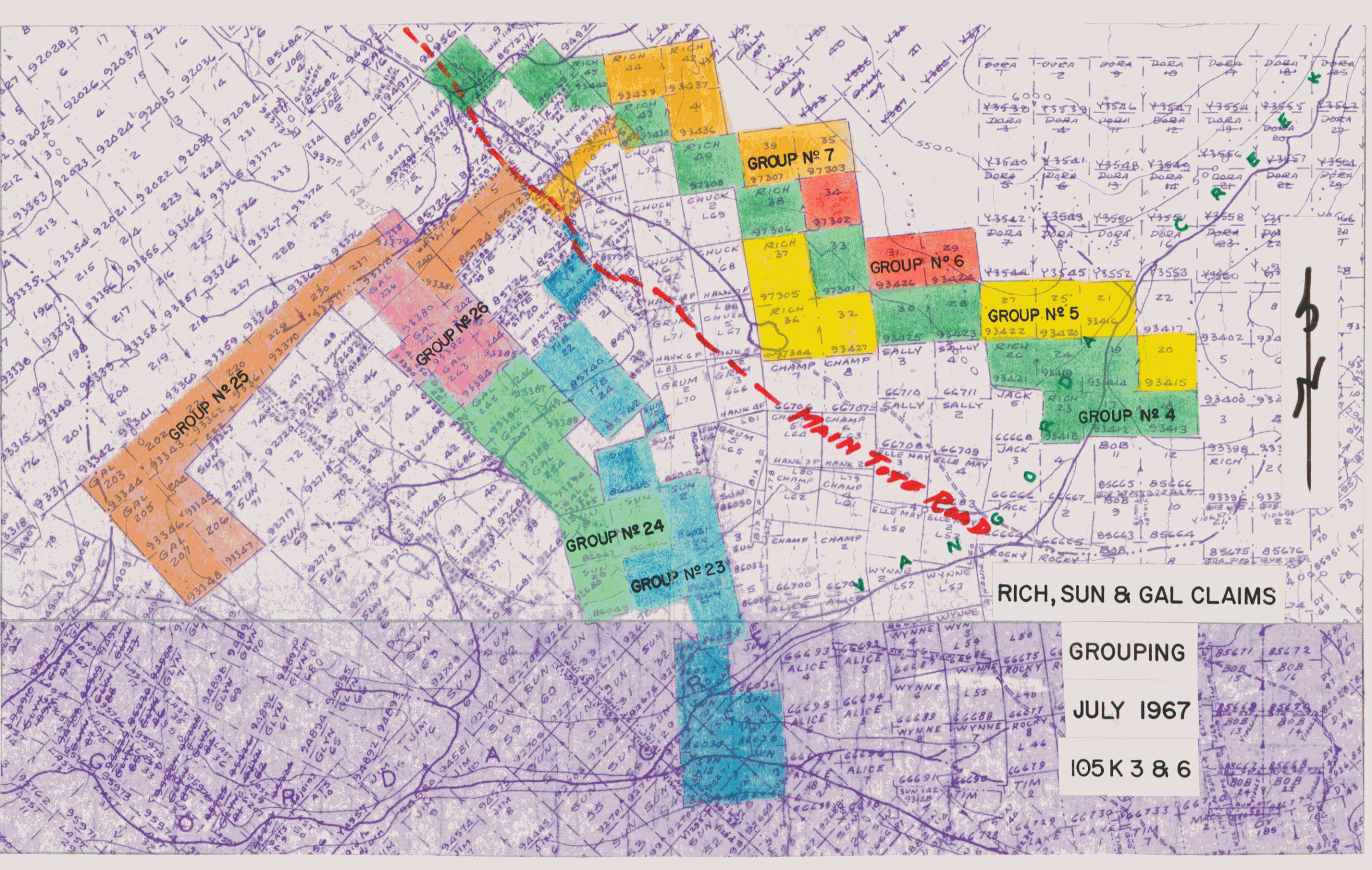


Murray O. Hampton, B.A.Sc., P. Eng.
Chief of Exploration for
ANVIL MINING CORPORATION LIMITED

DATED this.....2nd.....day of August.....1967, in the
City of Whitehorse in the Yukon Territory.



A Commissioner for Oaths and Affidavits
in and for the Yukon Territory:

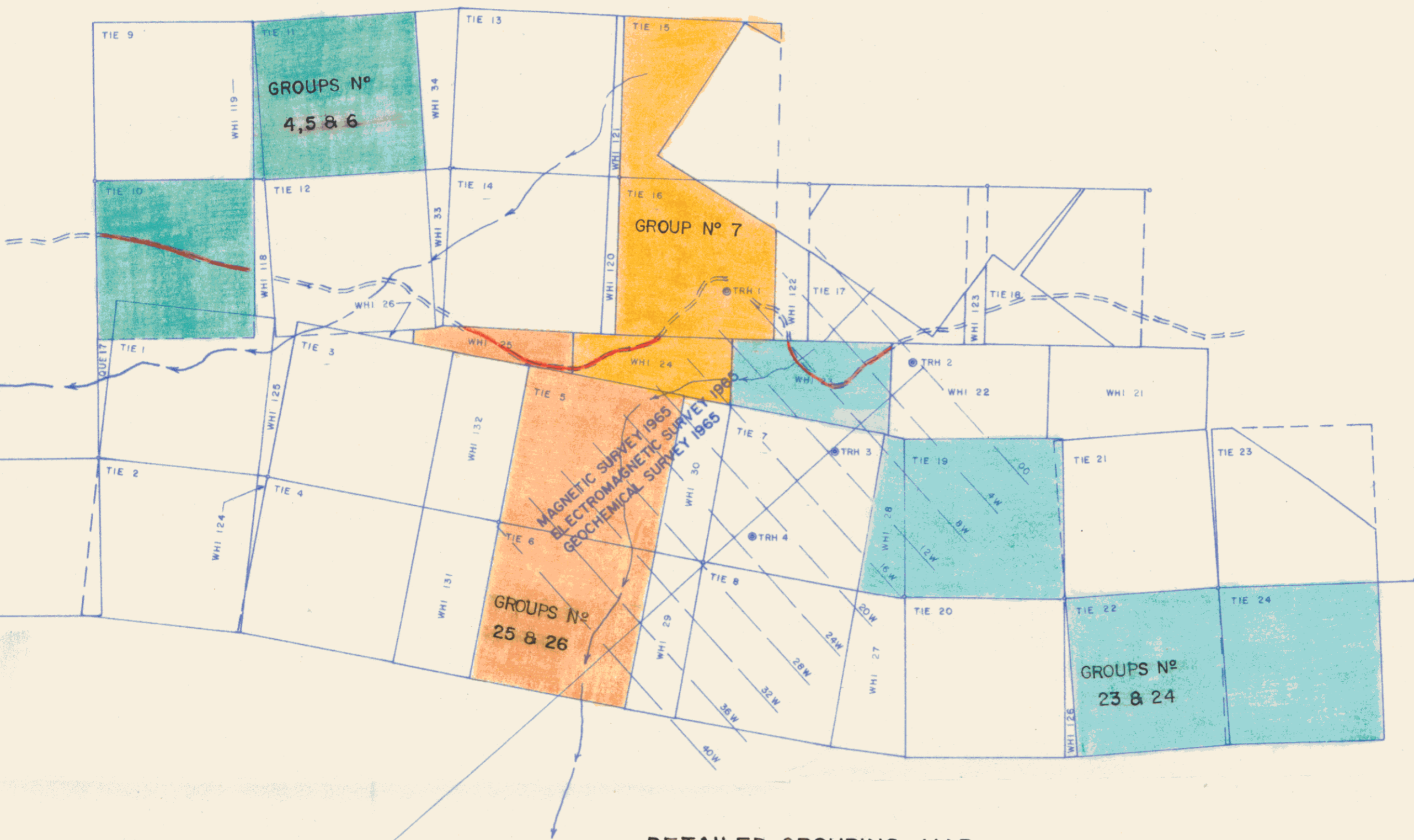


RICH, SUN & GAL CLAIMS

GROUPING

JULY 1967

105 K 3 & 6



DETAILED GROUPING MAP

○ DDH 66-PR1, INDICATES DIAMOND DRILL HOLE LOC.
 ● TRH 1, INDICATES ROTARY DRILL HOLE LOC.

ANVIL MINING CORP.	
WHITEHORSE	
PELLY RIVER MINES LTD. NORTHWEST CLAIMS ANVIL DIST. YUKON	
DATE: Nov. 26/66	DRAWING N°
SCALE: 1" = 1000'	WX-17
DRAWN BY: <i>JM</i>	FILE:

DATE PRINTED: