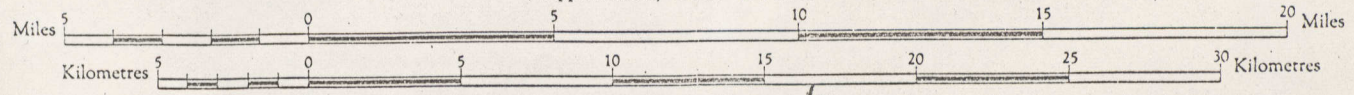




BLISHMENT R.C.E., 1949-51

Scale 1 : 250,000  
Approximately 1 Inch to 4 Miles

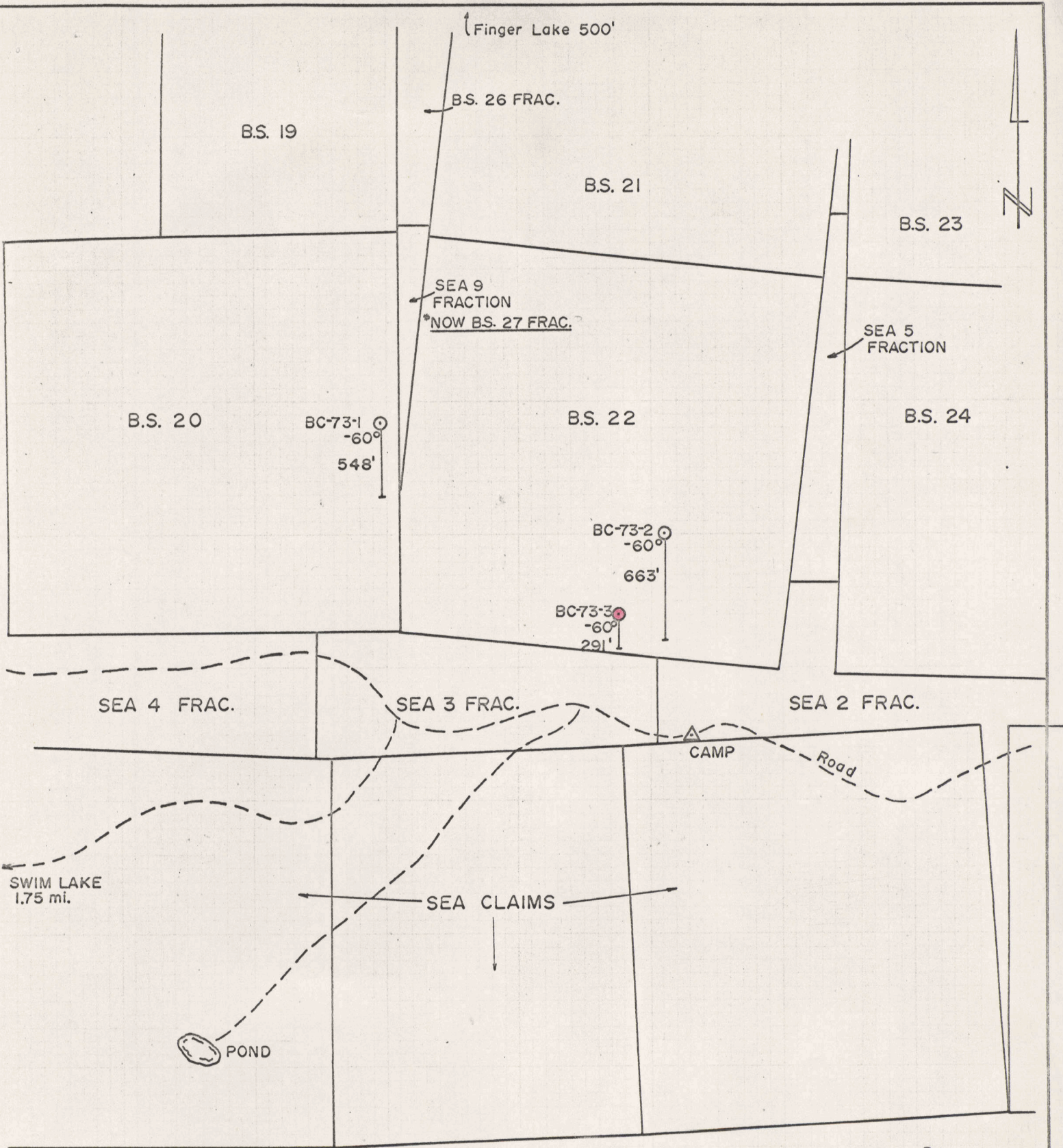
DD-131



N.T.S. 105 K/2

Triangulation  
Contour

091208



DD-131

— KERR ADDISON MINES LTD. —

DDH LOCATIONS FOR THE B.S. CLAIMS.

SWIM LAKE AREA, Y.T.  
(105-K-2)

● DDH applied for assessment  
DRILLED FROM:  
JULY 20/73 to AUG. 3/73

SCALE: 1" = 500'

TOTAL FOOTAGE = 1502'

9/10/73

09/20/73

# ARCTIC DIAMOND DRILLING LTD.

184 Industrial Road  
Whitchorse, Yukon Territory

730 - 510 W. Hastings Street,  
Vancouver, B.C.

Marwell Area - Phone ~~668-2440~~ 667-6434

Phone 688-3328

INVOICE #1440

August 5, 1973

IN ACCOUNT WITH:

Kerr - Addison Mines Ltd.,  
1405 - 1112 West Pender Street,  
Vancouver, B.C.

Drilling charges August 1 - 5, 1973 (Swim Lake Project)

Hole: 73 - 3 x 60° x AQ

Overburden

0 - 15 = 15 feet @ \$17.20 per foot = \$ 258.00

Coring

15 - 291 = 276 feet @ \$17.20 per foot = \$4,747.20 \$5,005.20

Moving In (Delay in locating #1 Hole)

70 man hours @ \$8.00 per hour = \$ 560.00  
(14 hrs. x 4 man crew = 56)  
(14 hrs. x 1 truck driver = 14)  
(70 man hours)

TOTAL INVOICE \$5,565.20

Total Footage - 1,502'

RECEIVED  
AUG 27 1973

Y-7F-13

KERR ADDISON MINES LTD.

*[Handwritten Signature]*

Per.....

*Sent to Toronto Aug 27/73*



