

ALRAE ENGINEERING LTD.
844 WEST HASTINGS STREET, VANCOUVER, B.C.

TELEPHONE 681-9381
TELEX No. 04-50604

November 13, 1970

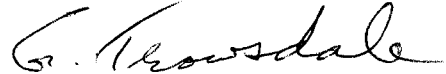
Mr. R. L. Williams
Mining Recorder
Watson Lake, Yukon

Dear Sir:

With reference to your letter of November 9th, I am enclosing two sets of the diamond drill logs. Also, the core is stored on the property. Using the allowable figure of \$9.00/ft. for the diamond drilling will provide sufficient expenditures to cover at least the two years assessment applied for.

Yours very truly,

ALRAE ENGINEERING LTD.



G. Trowsdale, P. Eng.

GT/ph

Encl.

GLENNA 7, LAKE 10

105-H-7

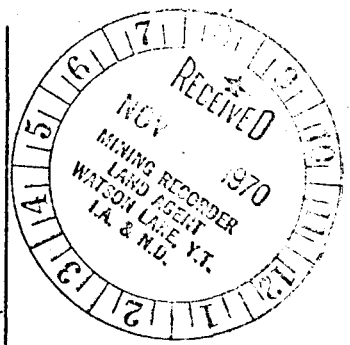




Department of Indian Affairs and Northern Development
YUKON QUARTZ MINING ACT

FORM "C" - APPLICATION FOR A CERTIFICATE OF WORK

(This form required in duplicate with sketch showing location of work.)



I (Name) G. Trowsdale	Occupation Mining Engineer
(Postal Address) 844 W. Hastings Street, Vancouver 1, B. C.	

OFFICE DATE STAMP

MAKE OATH AND SAY, THAT :-

1. I am the ~~owner~~ agent of the owner, of the mineral claim(s) to which reference is made herein.
2. I have done, or caused to be done, work on the following mineral claim(s):
(Here list claims on which work was actually done by number and name)
Y89256 Glenna 7
Y89152 Lake 10

situated at 12 miles west of Hyland River Claim Sheet No. 105-H-7

in the Watson Lake Mining District, to the value of at least \$3,000.00

dollars, since the 27th day of October 1969

to represent the following mineral claims under the authority of Grouping Certificate No. 614
(Here list claims to be renewed by number and name in numerical order)

Y17988	Lake 29	Y89250	Glenna 1
Y17989	Lake 30	Y89251	Glenna 2
Y22707	Lake 31	Y89252	Glenna 3
Y22708	Lake 32	Y89253	Glenna 4
Y22709	Lake 33	Y89254	Glenna 5
Y22710	Lake 34	Y89255	Glenna 6
Y89152	Lake 10	Y89256	Glenna 7
		Y89257	Glenna 8

ALL TO BE RENEWED 2 YEARS - TO OCTOBER 27, 1975.

3. The following is a detailed statement of such work: (Set out full particulars of the work done in the twelve months in which such work is required to be done, as shown by Section 53.)

Diamond drilling on Lake 10 and Glenna 7
2,414 feet @ \$15.00/ft. = \$36,210.00

Locations on accompanying map.

Sworn before me at Vancouver
 this 5 day of November 1970
[Signature]
 Commissioner for Oaths for Yukon Territory.

G. Trowsdale
 Applicant.

DIAMOND DRILL RECORD

FROM TO		DESCRIPTION	CORE LENGTH				ASSAYS				ACCUMULATIVE AVERAGES				
			FROM	TO	ACC WIDTH	SAMPLE NO.	AU OZ.	AG OZ.	% CU		% W₃ AG W	CU W			
83	112	(Cont.)													
		Banded phyllite and argillite, brecciated and fractured, sericite. 107-112' - breccia with carbonate cement.													
112	129	metallimestone, some argillaceous material, brecciated, fractured. 112-118' - breccia with argillite fragile, core crumbly, pyrite disseminated and massive along fractures. 118-125' - limestone breccia, pyrite 125-129' - faint banding 30° to core axis, sericite, breccia.													
129	147	Banded skarn and argillaceous quartzite, banding 30° to core axis, pyrite, some breccia. 129-134' - argillaceous quartzite, fractured perpendicular and 10° to core axis, carbonate along fractures, minor breccia. 134-135' - breccia, pyrite. 135-143' - banded skarn 15° to core axis, broken core, some argillite, minor breccia, pyrite. 143-145.5' - faint banding. 145.5-147' - banded skarn and phyllitic ar-													
			145.0	146.1		12504	Tr.	0.1	Tr.	0.05	0.55	Tr.			

COLLAR
 North 4 + 50
 East 2 + 80
 Elevation 5875
 Azimuth 015°
 Dip 50°
 Logged By A. L. Mayo

SILVER MARK MINES LIMITED

Hole No. 70-5
 Commenced July 7, 1970
 Finished July 26, 1970
 Purpose Of Hole

DIAMOND DRILL RECORD

DESCRIPTION		CORE LENGTH				ASSAYS				ACCUMULATIVE AVERAGES			
FROM	TO	FROM	TO	ACC WIDTH	SAMPLE NO.	AU OZ.	AG OZ.	% CU		AU W	AG W	CU W	
0	22	OVERBURDEN, CASING TO 104'											
22	45	Fine grained quartzite, faint banding 40° to core axis, minor sericite along bands, core somewhat broken. 26.5-32' - broken and some lost core. 34-41' - quartz cemented breccia. 41-45' - broken and lost core.											
45	112	Chlorite muscovite schist, banding 60° to core axis, contorted banding, large quartz-carbonate porphyroblast, mostly broken core. 45-49' - broken core, 25% recovery. 49-50' - some siliceous replacement at schist. 50-60' - contorted banding, 25% recovery, increased muscovite and quartz porphyroblast. 65-89' - 25% recovery. 106-111' - increased chlorite, highly fractured, 20% recovery. 111-112' - recemented breccia.											
112	149	Argillaceous quartzite, banding 70° to core axis, bands 2-10mm wide, some											

DIAMOND DRILL RECORD

FROM	TO	DESCRIPTION	CORE LENGTH				ASSAYS					ACCUMULATIVE AVERAGES		
			FROM	TO	ACC WIDTH	SAMPLE NO.	AU OZ.	AG OZ.	% CU	% Pb	% Zn	WO. 3	AG W	CU W
113	170	(Cont.)												
		limonite, 35% recovery. 145-146' -												
		bands of sericite. 146-148' - lost												
		core. 150-155' - lost core. 160-163'												
		- 10% recovery, oxidized sulphides (?)												
		sphalerite(?) 163-166' - 10% recovery.												
170	203	Banded quartzite, banding 30° to core												
		axis, few bands 5-15mm wide sericite												
		schist, minor fractures with siliceous												
		injection, fine grained, minor calcite												
		along fractures 70° to 80° to core axis,												
		some limonite along bands. 176-177' -												
		sericite and chlorite. 181-182' - calcar-												
		eous. 183.5-188' - more argillaceous,												
		50% recovery. 188.5-188.7' -oxidized												
		sulphides(?) pyrite(?). 197-202' -												
		broken core.												
203	223.5	Mineralized argillaceous quartzite,	203.0	205.7	2.7	12517	Tr.	Tr.	-	0.02	0.03	-		
		sphalerite, magnetite, calcite, pyrite	205.7	209.0	3.3	12518	Tr.	0.9	-	0.14	1.20	-		
		minor malachite and galena, banding 50°	209.0	214.5	5.5	12519	Tr.	Tr.	-	Tr.	0.02	-		
		to core axis. 203-205.7' - minor spha-	214.5	217.3	2.7	12520	Tr.	0.1	-	0.07	0.02	-		
		lerite in bands. 205.7-209' - sphaler-	217.3	218.0	0.8	12521	0.02	1.6	-	0.24	0.44	-		

North 4 + 05
 East 25 + 35
 Elevation 5765
 Azimuth 020°
 Dip -45
 Logged By Alan Mayo

SILVER MARK MINES LIMITED

Hole No. 70-11 **20-91**
 Commenced August 1, 1970
 Finished August 4, 1970
 Purpose of Hole _____

DIAMOND DRILL RECORD

DESCRIPTION		CORE LENGTH				ASSAYS				ACCUMULATIVE AVERAGES			
FROM	TO	FROM	TO	ACC WIDTH	SAMPLE NO.	AU OZ.	AG OZ.	% CU		AU W	AG W	CU W	
0	8	OVERBURDEN, CASING											
8	37	Argillaceous quartzite, banding 70° to core axis, brecciated in part, mica- ceous bands, minor contorted banding. 8-18' - broken core, minor breccia. 21-26' - more siliceous, mild breccia- tion. 27-28' - recemented breccia. 32-33' - chlorite, sericite.											
37	64	Siliceous schist, banding 70° to core axis, some contorted banding, sericite, some muscovite. 43-43.4' - siliceous vein. 44-47' - more siliceous. 47-48' - brecciated. 53-56' - contorted banding, some limonite, minor epidote. 56-58' - brecciated, calcareous. 61-63' - limonite.											
64	78	Brecciated muscovite chlorite sericite schist, broken core. 73-78' - lost core											
78	107	Siliceous schist, banding 70° to core											

DIAMOND DRILL RECORD

FROM	TO	DESCRIPTION	CORE LENGTH				ASSAYS					ACCUMULATIVE AVERAGES		
			FROM	TO	ACC WIDTH	SAMPLE NO.	AU OZ.	AG OZ.	% CU	% Pb	% Zn	AU W	AG W	CU W
78	107	(Cont.) axis, light grey, sericite, minor chlorite, some remobilized quartz, minor pyrite, some broken core. 83-85' - more siliceous. 88-89' - very siliceous, pyrite. 89- 95' - increased chlorite, some muscovite 96-99' - muscovite. 99-103' - brecc- iated. 103-105' - brecciated, lost core.												
107	110	Mineralized skarn, sphalerite, minor galena and epidote. 107.75-110' - sphalerite in bands, trace galena.	107.7	110.0	2.3	12531		2.15		2.53	3.86			
110	119.75	Skarn, trace sphalerite, minor epidote 117.6-118' - calcareous, minor pyrite.												
119.75	120.25	Mineralized skarn, sphalerite.	119.7	120.2	0.5	12532		1.02		0.23	1.15			
120.25	129	Limestone, somewhat brecciated.												
129	132	Mineralized limestone, some bands spha- lerite. 129-130.3' - sphalerite in bands. 130.3-132' - minor sphalerite.	129.0	130.3	1.3	12533		16.12		4.06	5.30			
			130.3	132.0	1.7	12534		1.06		0.39	.33			
			129.0	132.0	3.0	Av.		7.58		1.98	2.48			

North 3 + 95
 East 22 + 35
 Elevation 5760
 Azimuth 020
 Dip -45
 Logged By Alan Mayo

SILVER MARK MINES LIMITED

Hole No. 70-14
 Commenced August 8, 1970
 Finished August 9, 1970
 Purpose Of Hole

DIAMOND DRILL RECORD

FROM	TO	DESCRIPTION	CORE LENGTH				ASSAYS					ACCUMULATIVE AVERAGES					
			FROM	TO	ACC WIDTH	SAMPLE NO.	AU OZ.	AG OZ.	% CU	% Pb	% Zn	AU W	AG W	CU W			
0	26	OVERBURDEN, CASING															
26	50	Muscovite chlorite schist, banding 70° to core axis, somewhat siliceous, thin irregular bands secondary quartz. 28-31' - few recemented fractures, minor biotite. 31-33' - more siliceous. 33-36' - leached, limonite. 40-42' - very siliceous. 42-44' - some biotite. 44-50' - increased contorted banding, brecciated, blebs secondary quartz.															
50	63	Argillaceous quartzite, brecciated, highly fractured, siliceous injection, some chlorite muscovite and sericite, somewhat skarny.															
63	69	Mineralized limestone, fine grained, somewhat skarny, mostly barren. 63-63.5' - sphalerite, galena. 67-68.5' - oxidized sphalerite, galena.															
			63.0	63.5	0.5	12576		7.53		2.80	3.32						
			67.0	68.6	1.6	12571		.59		.33	.31						
69	87	Skarn, light green, some mineralization 84.2-86' - bands sphalerite, some															
			84.2	86.0	1.8	12572		.50		.14	2.52						

3091

DIAMOND DRILL RECORD

DESCRIPTION		CORE LENGTH				ASSAYS					ACCUMULATIVE AVERAGES		
FROM	TO	FROM	TO	ACC WIDTH	SAMPLE NO.	AU OZ.	AG OZ.	% CU	% Pb	% Zn	AU W	AG W	CU W
		131.0	132.3	1.3	12575		1.72		.63	1.54			
		131-132.3' - mineralization, galena, sphalerite, skarny.											
134	168	Banded quartzite, banding 80° to core axis, faint banding, solid core, fine grained, some siliceous injection.											
		141-145' - thin bands muscovite, trace pyrite. 151-160' - increased muscovite, some pyrite. 161-162' - very calcareous. 164-168' - skarny, minor pyrite.											
168	189	Banded quartzite, banding 80° to core axis, somewhat argillaceous. 176-179' - brecciated. 182-183' - trace pyrrhotite.											
	189	END OF HOLE											

LLAR

ALRAE ENGINEERING LTD.

DD91

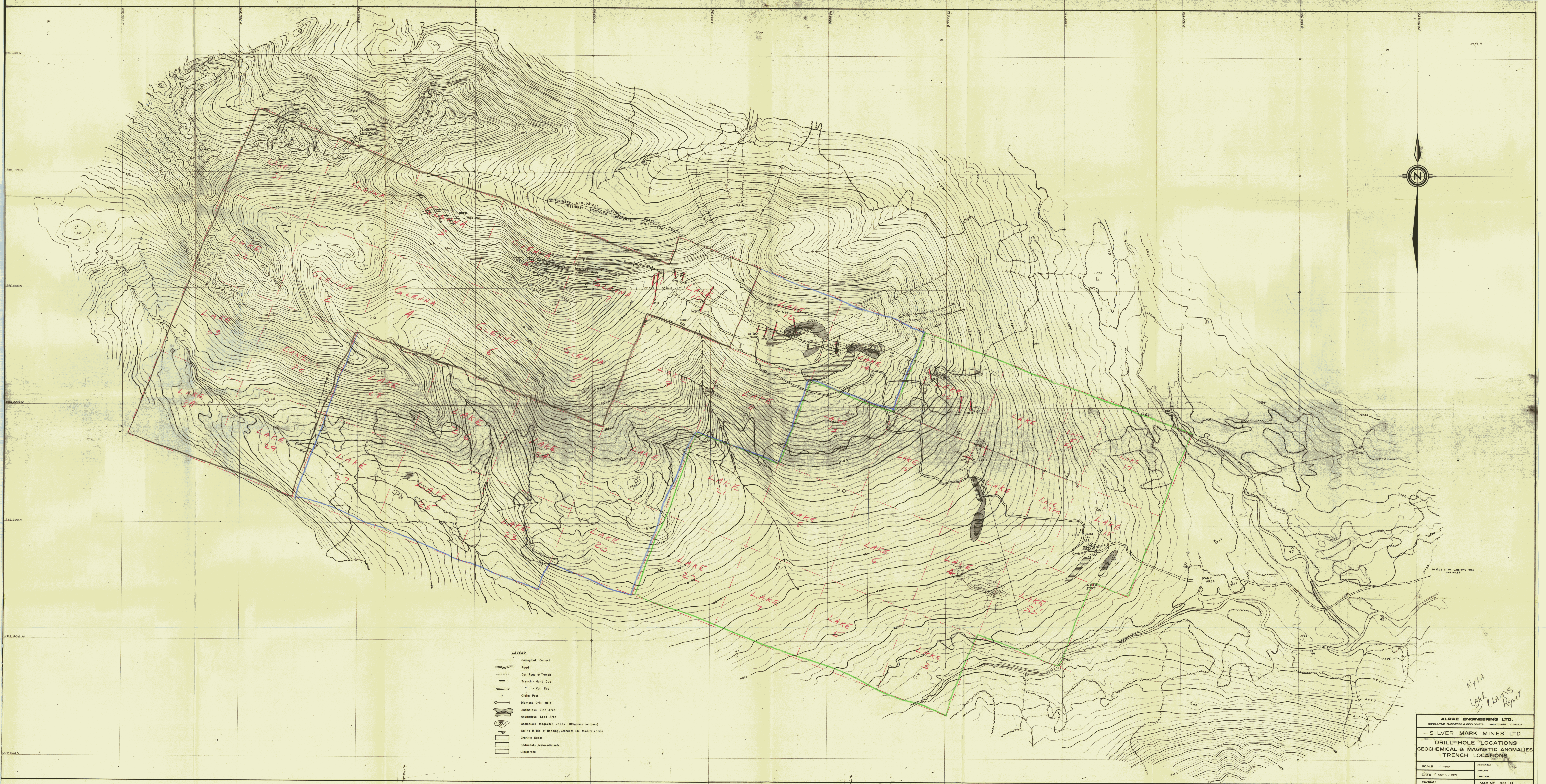
North 7 + 90
 East 6 + 10
 Elevation 5835'
 Azimuth 350°
 Dip -50
 Logged By Rae G. Jury

SILVER MARK MINES LIMITED

Hole No. 70-16
 Commenced August 20, 1970
 Finished August 21, 1970
 Purpose Of Hole _____

DIAMOND DRILL RECORD

		DESCRIPTION	CORE LENGTH				ASSAYS					ACCUMULATIVE AVERAGES		
FROM	TO		FROM	TO	ACC WIDTH	SAMPLE NO.	AU OZ.	AG OZ.	% CU	% Pb	% Zn	AU W	AG W	CU W
0	6	OVERBURDEN												
6	77	Quartzite, impure, banded 50° to core axis, medium grey colour, minor epidote and sericite along hairline veinlets.	9.5	10.0	0.5	lost								
		25-26.5' - increased skarn. 26.5-33.5' - 10-15% epidote. 33.5-62.0' - dark grey, increasing biotite, banding 50° to core axis, mica's becoming coarser grained and crumpled. 62-77' - less mica, more typical of impure quartzite, minor epidote along fractures,	14.5	15.0	0.5	lost								
77	86.4	Skarn, chiefly epidote, disseminated galena and sphalerite. 83.4-86.4' - less galena and sphalerite.	77	83.4	6.4	12596		.72		1.88	1.96			
			83.4	86.4	3.0	12597		Tr.		.01	.02			
86.4	100.5	Biotite sericite schist, banding 50° to core axis, at 98'6" epidote skarn.												
100.5	134.0	Limestone, light grey, mottled appearance, vague banding 50° to core axis.	126.1	132.1	6.0	12598		.68		.64	1.02			
		126.6-132.1' - skarny, minor sphalerite. 132.1-134' - increased galena and	132.1	134	1.9	12599		.93		2.06	1.84			



- LEGEND**
- Geological Contact
 - Road
 - Cut Road or Trench
 - Trench - Hand Dug
 - Claim Post
 - Diamond Drill Hole
 - Anomalous Zinc Area
 - Anomalous Lead Area
 - Anomalous Magnetic Zones (100 gamma contours)
 - Strike & Dip of Bedding, Contacts Etc. Mineralization
 - Granitic Rocks
 - Sediments, Metasediments
 - Limestone

ALRAE ENGINEERING LTD.
 CONSULTING ENGINEERS & GEOLOGISTS, VANCOUVER, CANADA
 SILVER MARK MINES LTD.
 DRILL HOLE LOCATIONS
 GEOCHEMICAL & MAGNETIC ANOMALIES
 TRENCH LOCATIONS
 SCALE: 1" = 400'
 DATE: SEPT. 1970
 DRAWN: [blank]
 CHECKED: [blank]
 MAP NO. 200-24
 25 24

N/A
 LAKE CLAIMS REPORT

