

091174

ARCHER, CATHRO
AND ASSOCIATES LTD.
CONSULTING GEOLOGICAL ENGINEERS

CASCA BUILDING, WHITEHORSE, Y.T. 667-4113

BENTALL CENTRE, VANCOUVER, B.C. 688-3022 OR 522-1562

January 22, 1969

POST OFFICE BOX 1708
WHITEHORSE, Y.T.

~~060699~~

Mr. J. MacKenzie,
Mining Recorder,
Watson Lake Mining District,
P.O. Box 269,
Watson Lake, Y.T.

Matt Berry Mines Ltd.
Berry, Matt, Jim and Frances Claims

Dear John,

Thank you for your letter of January 20, 1969. I have made the corrections on the Forms "C" and am returning them to you.

I am enclosing an plan showing location of the diamond drill holes, and values, scale 1"=100ft, as the previous map I sent to you had Ddh's 15, 16 and 17 plotted incorrectly.

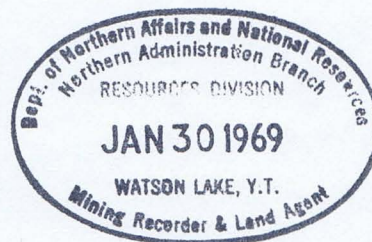
The drill logs should be available by the end of the month and will be sent to you immediately.

Yours truly,
ARCHER, CATHRO & ASSOCIATES LTD.,

M.P. Phillips

M.P. Phillips.

c.c. L. LaPrairie,
Matt Berry Mines Ltd.,
1100-347 Bay Street,
Toronto 1.



09/174

ARCHER, CATHRO
AND ASSOCIATES LTD.
CONSULTING GEOLOGICAL ENGINEERS

CASCA BUILDING, WHITEHORSE, Y.T. 667-4113

BENTALL CENTRE, VANCOUVER, B.C. 688-3022 OR 522-1562

May 13, 1969

POST OFFICE BOX 1708
WHITEHORSE, Y.T.

Mr. J.A.C. McKenzie,
Mining Recorder,
Watson Lake Mining District,
P.O. Box 269,
Watson Lake, Y.T.

MAY 21 1969

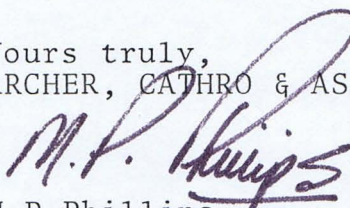
Matt Berry Mines Ltd.,
Berry, Matt, Jim and Frances Mineral Claims
See letter dated January 20, 1969

Dear John,

Find enclosed diamond drill logs with assay results of drillholes 14, 15, 16 and 17.

Cores for these drillholes are located at the Matt Berry camp, just north of the mouth of Thompson Creek on the East Arm, Frances Lake.

Yours truly,
ARCHER, CATHRO & ASSOCIATES LTD.,


M.P. Phillips.

c.c. L.F. LaPrairie, Matt Berry Mines Ltd., Toronto.

1	14	343
2	15.	421
3	16	149.
4	17	115.
5	18	331
6	19.	407.
7	20.	433.
8	21	340.
9	22	503.2
10	(23)	425.0.
11	(24)	409.0.
12	(25)	500.0.
13	(26)	409.5
14	(26A)	492.0.
15	(27)	70.0.
16	(27A)	377.0.

5724.7

FC1160

01174

DIAMOND DRILL RECORD

PROPERTY Matt Berry Mines Limited HOLE NO. 19

SHEET NUMBER _____ SECTION FROM _____ TO _____ STARTED Feb. 14, 1969
 LATTITUDE 19 + 00 on th BL (N9601) DATUM Francis Lake (2540) COMPLETED Feb. 19, 1969
 DEPARTURE 0 + 75 N24°E (E11081) BEARING _____ ULTIMATE DEPTH 407'
 ELEVATION 2816.7 DIP -90° PROPOSED DEPTH 400'

Logged by: Adel Tamman
 Drilled by: Arctic Diamond Drill

DEPTH FEET	FORMATION	FORMATION	Ave.	SAMPLE NO	WIDTH OF SAMPLE	Ag	Pb	Zn	
0 - 82	Overburden								
82.0-108.5	Phyllitic shale								
	Thin bedded with 90° to core axis (95.6'-96.8') - brecciated qtz. and carbonate with veinlets of mineralization. Pyrite - magnetite-chalcopyrite. (101.2'-101.8') brecciated quartzite and carbonate with stringers of pyrite - minor chalcopyrite.								
108.5-152.1	<u>Matt Berry Zone</u>	Sb							
	Mineralization occurs in the following sections:		Tr	108.0-109.0	11652	1.0	Tr	Tr	0.37
	a) 109.0-111.0, b) 117.3'-119.9', c) 146.1-149.5, d) 150.0-152.1 CuFeS ₂ pre-		Tr	109.0-110.0	11653	1.0	0.2	Tr	1.28
	dominated in all section. There are more zinc sulphides and minor lead sulphides		Tr	110.0-111.0	11654	1.0	Tr	Tr	0.20
	in the last two sections than in the first two. Barren phyllitic shale between the sections		0.06	117.0-118.0	11655	1.0	3.2	0.97	1.04
	on the schistosity 60° to core axis.		0.64	118.0-119.0	11662	1.0	0.4	1.15	0.17
			0.09	119.0-120.0	11663	1.0	Tr	Tr	0.12
			Tr	146.1-146.7	11656	0.6	Tr	Tr	0.10
			1.95	146.7-147.7	11657	1.0	3.9	Tr	0.20
			0.09	147.7-149.3	11658	1.6	0.2	Tr	0.10
			Tr	149.3-150.0	11659	1.7	Tr	Tr	Tr
			Tr	150.0-151.0	11660	1.0	Tr	0.10	0.15
			0.72	151.0-152.1	11661	1.1	1.8	Tr	0.15
152.1-230.0	Phyllitic shale								
	(152.1-179.0) highly sheared with qtz. stringers with traces of pyrite and chalcopyrite.								
	(179.0-230.0) twisted schistosity - (199.0-230.0) flat sch. quartz stringers with traces of CuFeS ₂ and Zinc sulphides.								

M.P. TORONTO-STOCK FORM NO. 501 REV. 12/51

DEPTH	FORMATION	FORMATION	SAMPLE NO	WIDTH OF SAMPLE	Ag.	Pb	Zn
230.0-407.0	Chloritic quartz schist						
	Greyish with talc-mica-clorite schist from flat to contorted (332.0'-336.0'), (398.0-400.0) with pyrite, speckles of Cu Fe S ₂	(319.0-320.0)	11664	1.0	Tr	Tr	0.3
	Sample No. 11664 Sb - Tr						
	Average 108.0 - 110.0			2.0	.01	Tr	.82
	Average 117.0-120.0			3.0	1.20	.70	.4
	Average 146.1 - 149.3			3.2	1.30	Tr	1.3
	Average 150.0-152.1			2.1	.90	Tr	.1
	Overall Core Recovery 75%						
	BQ Core						

DIAMOND DRILL RECORD

PROPERTY Matt Berry Mines Ltd. HOLE NO. 20

SHEET NUMBER 1 SECTION FROM 122 TO 350.5 STARTED Feb. 21, 1969
 LATITUDE 20 + 00 on B. L. (N9800) DATUM Francis Lake (2540') COMPLETED March 5, 1969
 DEPARTURE 2 + 00 N 24° E (E11017) BEARING _____ ULTIMATE DEPTH 433
 ELEVATION 2814.6 DIP -90° PROPOSED DEPTH 400

DEPTH FEET	FORMATION	FORMATION	Ave.	SAMPLE NO.	WIDTH OF SAMPLE	Ag	Pb	Zn	C
0 - 117	Overburden	Sb							
117 - 122	Quartz with veinlets of pyrite	Tr	117.0-119.4	11665	2.4	Tr	0.12	Tr	
						Copper -	Tr		
122 - 239	Phyllitic Shale								
	Dark grey, strongly schistose with 50° to core axis. Some mud seams and and quartz stringers with pyrite and chalcopyrite.								
	(147-153) - cave	Sb							
	(152-153) - 1 ft. of quartzite vein with chalcopyrite and pyrite	Tr		11666	1.0	Tr	0.10	0.02	
						Copper -	Tr		
	(184.9-187) disseminated pyrite, strings of quartz with chalcopyrite	Tr		11667	1.7	Tr	0.07	0.05	Tr
	(187 - 190.9) as above but with increasing numbers of quartz stringers with fine crenulation,	Tr		11668	3.9	Tr	0.05	0.01	Tr
239-350.5	Matt Berry Zone								
	Highly sheared and gaugy argillite and phyllitic shale with numerous mud seams and disseminated pyrite, minor chalcopyrite. Quartz stringers and veinlets with pyrite and chalcopyrite. (248.2-251.4) dissiminated pyrite with quartz veinlets in phyllitic shale								
	(318.4-320.6) only 6 inches core-quartz with pyrite chalcopyrite	Tr		11669	3.2	Tr	0.10	Tr	Tr
	(349.0-350.3) phyllitic shale with 3 inches of chalcopyritic and pyritic quartz	Tr		11670	1.3	T	0.18	Tr	Tr
350.5-433	Phyllitic Shale								
	As above, schistosity of 70° to core axis.								
	(398.4-400.5) white quartz; from 400 to 400.5) cloritic quartzite with chalcopyrite, minor pyrite	Tr		11671	2.1	Tr	0.05	Tr	Tr
	(401.7-402.6) cloritic quartz 77% overall recovery BQ Drill	Tr		11672	0.9	Tr	0.02	Tr	Tr

N.M.P. FORM 9-65 STOCK FORM NO. 501 REV. 12/51

DRILLED BY Arctic Diamond Drilling

SIGNED "Adel Tamman"

DIAMOND DRILL RECORD

PROPERTY Matt Berry Mines Limited

HOLE NO. 21

SHEET NUMBER 1 SECTION FROM 0 TO 236.0 STARTED Mar. 7, 1969
 LATITUDE 1800' Base Line (N9909) DATUM Francis Lake (2540') COMPLETED Mar. 15, 1969
 DEPARTURE 250' N24°E (E10871) BEARING Azimuth 204-00 ULTIMATE DEPTH 340'
 ELEVATION 2817.8 DIP -75° PROPOSED DEPTH 400'

DEPTH FEET	FORMATION	FORMATION	Ave.	SAMPLE NO	WIDTH OF SAMPLE	Ag	Pb	Zn
0-107	Overburden							
107 - 224	Phyllitic Shale							
	Dark grey, schistosity from perpendicular to 30° to core axis - wavy surface with dull micaceous luster (115'-136') schistosity perpendicular to core axis (136'-141') schistosity 20° to core axis							
	(142.2-144.1) qtz. vein with some schistos bands - chalcopryrite, pyritic, one speckles of galena		Sb					
	(144.6-150.0) only 2.6' core - milky quartz as above		Tr	11673	1.4	Tr	.08	.01
	(168.4-171.0) only 8" core of white quartz with veinlets of chalcopryrite.		Tr	11674	2.6	Tr	.10	Tr
	(183.0-190.0) strongly foliated and fractured phyllitic shale							
	(190.0-190.8) brecciated white quartz with phyllitic digetion-veinlets chalcopryrite & pyrite		Tr	11675	0.8	Tr	.10	Tr
	(198.0-207.2) Phyllitic shale- less schistose - 30° to core axis.							
	(207.2-207.8) white qtz and buff carbonate with speckles of chalcopryrite-granular pyrite, sphalerite		Tr	11675	0.6	Tr	.05	Tr
	(215.0-224.0) Phyllitic shale (216.9-217.9) greyish quartz - close to the zone mud seams.							
224-268	Matt Berry Zone?							
	(224.5-225.4) brecciated quartz - no visible mineralization		Tr	11677	9.0	.10	.02	Tr
	(226.9-228.1) brecciated qtz. as above -numerous phyllicic digetions		Tr	11678	1.2	Tr	.05	Tr
	(228.1-268.0) Phyllitic shale, schistosity from 60° to perpendicular to core axis, numerous stringets of quartz with cubic crystals of pyrite.							
	(235.7-236.0) 3 inches of highly chalcopryritic qtz.							

N.M.P. TORONTO-STOCK FORM NO. 201 REV. 12/51

DRILLED BY Arctic Diamond Drilling

SIGNED "Adel Tamman" Mar. 26, 1969

HOLE NO. 21

DEPTH FEET	FORMATION	FORMATION	SAMPLE NO	WIDTH OF SAMPLE	Ag.	Pb	Zn
	(247.3-248.5) numerous quartz stringers - no visible mineralization	Sb					
	(252.0-252.8) phyllitic shale qtz. stringers with chalcopyrite	Tr	11679	0.8	Tr	.02	Tr
	(252.8-268.0) phyllitic shale-schistosity 60° - strongly schistose with some mud seams closeto the F. W.						
268-322	Phyllitic shale						
	Dark grey, strongly schistose parallel to core axis, some contortions						
	(268.0-305.0) some mud seams.						
	(305.0-306.0) disseminated cubic crystals of pyrite speckles of chalcopyrite	Tr	11680	1.0	.10	.02	.01
	(306.-322.0) schistosity from very contorted to parallel to core axis.						
322-340	Matt Berry Zone?						
	(324.5-325.0) brecciated white qtz. with speckles of chalcopyrite, pyrite						
	(sphalerite?) - 5" core	Tr	11681	0.5	Tr	.05	Tr
	(325.0-328.0) shear and gaugy phyllitic shale						
	(328.0-329.0) brecciated carbonate with quartz, speckles of chalcopyrite, minor sphalerite? - pyrite	Tr	11682	1.0	Tr	.02	.01
	(329.0-333.7) phyllitic shale strongly schistose with mud seams sch. 30°						
	(333.7-336.0) Phyll. shale with schistosity perpendicular to core axis.						
	(336.0-340.0) Phyll. shale less schistosity, contorted bands						
	73% overall recovery						
	BQ core						
	" Hole stopped due to coving ground.						

DIAMOND DRILL RECORD

PROPERTY Matt Berry Mines Limited HOLE NO. 22

SHEET NUMBER 1 SECTION FROM 0 TO 347.5 STARTED March 17, 1969
 LATITUDE 16 + 00 on the Base Line (9941) DATUM Francis Lake (2540') COMPLETED March 31, 1969
 DEPARTURE 2 + 00 N24°E (10638) BEARING Azimuth 204° ULTIMATE DEPTH 503'
 ELEVATION 2778.2 DIP -75° PROPOSED DEPTH 500'

DEPTH FEET	FORMATION	FORMATION	Ave.	SAMPLE No	WIDTH OF SAMPLE	Ag	Pb	Zn	Cu
0 - 77	Overburden								
77 - 327.7	Phyllitic Shale								
	Dark grey, sch. 90°-50° to core axis, more shear and gaugy closer to the zone, mud seams (91.5-92.7) mud seams								
	(112.7-182.0) numerous contorted bands and stringers of qtz. sch. 90° to core axis								
	(125.5-126.5) one foot of white qtz. with brecciated carbonate - traces of pyrite.								
	(162.7-168.8) milky qtz. with carbonate chloritic parts.								
	(170.0 - 174.3) 3 ft. of white brecc. qtz. with carbonate - chloritic in parts - traces of pyrite.								
	(182.0-208.0) schistosity from 50° to contorted.								
	(208.0-298.0) Less. sch. from 90° - 90°.								
	(278.0-327.7) strongly foliated chlorite along the schistosity - sheared and gaugy closer to the zone.								
327.7-367.0	Matt Berry Zone		Sb		Length				
	(327.7-330.0) core loss 4 inches in the H. W. about 1 ft. of white qtz. with scattered mineralization in the F. W. about 1 ft. of brecciated carbonate with massive sulphides								
	20% Pb. 20% Zn. 10% CuFeS ₂ - 5% FeS ₂								
	(330.0-339.6) strongly foliated phyll. shale with mud seams								
	(339.6-342.0) core loss 6 inches - about 1.4' massive sulphides - carbonate and qtz. as gangue ³¹								
	minerals 20% FeS ₂ - 10% Cu FeS ₂ - 5% Pb. 5% Zn.								
	(342.0-343.8) core loss 6 inches - phyll. shale with numerous selective replacements								
	along the schistosity mineralization mainly FeS ₂ and Cu FeS ₂ - minor sphalerite								

N.M.P. LOGGING STOCK FORM NO. 501 REV. 12/51

DIAMOND DRILL RECORD

PROPERTY Matt Berry Mines Ltd. HOLE NO. 23

SHEET NUMBER 1 SECTION FROM 0 TO 285.0 STARTED Apr. 3, 1969
 LATITUDE 14 + 00 BL (N10028) DATUM Francis Lake (2540') COMPLETED Apr. 7, 1969
 DEPARTURE 2 + 00 N24°E (E10448) BEARING S39°W Azimuth 219° ULTIMATE DEPTH 425 feet
 ELEVATION 2726.6 DIP -75° PROPOSED DEPTH 450 feet

DEPTH FEET	FORMATION	FORMATION	Ave.	SAMPLE NO.	WIDTH OF SAMPLE	Ag	Pb	Zn
0 - 47.0	Overburden							
47.0-72.3	Phyllitic Shale Sch. 30° - 90° to core axis - qtz. veinlets and stringers.							
72.3-78.0	Quartzitic vein with brecc. carbonate; speckles of muscovite, chlorite, traces of fine grained pyrite.							
78.0-101.0	More schistose phyllitic shale with bands from 2" to 4" of qtz. and carb.							
101.0-110.3	Only 9" core - phyllitic shale with crushed pyrite - grains of brecc. qtz. and carbonate with speckles of muscovite and chlorite.							
110.3-123.3	Phyllitic shale - twisted schistosity (117.3-118.0) 7" of qtz. & carb. in part chlorite							
123.3-143.0	Phyllitic shale - sch. 40° - 90° to core axis.							
143.0-144.0	Sheared and gaugy phyllitic shale							
144.0-147.0	3 feet of mud seams							
147.0-149.1	Core less 1.3' - strongly schistose phyllitic shale with qtz. veinlets.							
149.1-150.0	Quartzitic vein with pyritic patches							
150.0-157.0	Phyllitic shale strongly schistose.							
157.0-229.0	Schistosity 20° to core axis - less qtz. and carbonate stringers.							
229.0-242.0	Strongly schistose with more qtz. veinlets and stringers.							
242.0-254.0	Phyllitic shale as above - in parts qtz. stringers and carb. with diss. pyrite.							
254.0-272.5	Strongly foliated phyllitic shale with numerous qtz. bands with pyrite.							
272.5-275.0	<u>Vein Zone</u>							
	(272.5-274.0) 5" of patchy qtz. with crushed sulphides (pyrite-chalcopy) between contorted phyllitic shale finely banded.							
		272.5-274.0	Sb .01	11700	1.5	.14	.14	.54 .01

N.M.P. TORONTO-STOCK FORM NO. 501 REV. 12/51

DRILLED BY

SIGNED

DIAMOND DRILL RECORD

Logged by" Adel Tamman
April 12, 1969

PROPERTY MATT BERRY MINES LIMITED

HOLE NO. 24

Drilled by: Arctic Diamond Drilling

SHEET NUMBER	1	SECTION FROM	TO	STARTED	April 8, 1969
LATITUDE	14+00 BL N 10028	DATUM	Francis Lake (2540)'	COMPLETED	April 11, 1969
DEPARTURE	2 + 00 N24°E E 10448'	BEARING		ULTIMATE DEPTH	409'
ELEVATION	2726.6	DIP	90°	PROPOSED DEPTH	450'

DEPTH FEET	FORMATION	FORMATION	Ave.	SAMPLE NO	WIDTH OF SAMPLE	Ag	Pb	Zn
0 - 32.0	Overburden							
32.0-78.0	Phyllitic shale with qtz. stringers, schistosity from 30°-90° to core axis (66.0-67.0) about one foot of quartz with speckles of shlorite							
78.0-92.3	About 2.5 feet of white qtz. - 5 inches from the FW with brecciated carbonate and pyritic patches.							
92.3-112.0	More schistose phyllitic shale with numerous bands of brecc. qtz. and carbonate with chlorite and crushed pyrtie.							
112.0-152.0	As above - schistosity - 30° to core axis							
152.0-212.0	Strongly schistose phyllitic shale, qtz. veinlets and stringers. (188.0-190.0) only 5" core of fractured qtz. (195.0-196.5) only 2" core - qtz fragments with crushed pyrite (196.0-200.0) core recovered 1.5' - Phyll. shale with 5" of brecc. qtz. with FeS2							
212.0-220.0	About 6 feet of mud seams.							
220.0-285.9	Phyllitic shale in parts with qtz. veinlets - at 266' about 5" of mud seams - sheared schistosity closer to the Zone. (279.8-280.0) about 1/2 foot of white qtz. - one fragment with galena							
285.9-289.8	<u>Vein Zone</u> Core lost 2' - brecc. qtz. and carbonate - crushed pyrite and pyrrhotite in the FW of predominant galena minor sphalerite		.18	11707	3.9'	.46	.62	10.1
289.8-303.1	Sheared & gaugy in the HW - in the FW schistosity 10° to core axis							
303.1-308.3	<u>Vein Zone</u> Core lost 4" - brecc. qtz. and carb. fine grained pyrite and crushed chalcopyrite -4" from the FW predominant massive galena, minor ZnS.		.03	11708	1.0'	.14	.22	1.86
308.3-310.3	Phyllitic shale in part with selective replacement along the schistosity.		.04	11709	2.0'	.14	.45	2.2
310.3-310.8	5" of white qtz. with veinlets of galena and crushed sphalerite.			11710	2.0	.62	1.30	10.3
310.8-324.0	Strongly schistose phyllitic shale in parts with qtz. stringers.							
324.0-338.0	Less schistosity							
338.0-409.0	Phyllitic shale, strongly schistose with qtz. and carbonate bands in part gaugy with mud seams							

25% recovery in Vein Zones 67% Recovery overall BQ Core

Depth	Formation	Sample No	Length	Ag	Pb	Zn	Cu
404.0-458.0	<u>Phyllitic shale</u> Strongly foliated to very contorted qtz. bands from 1" to 6" Average:		4.0'	2.1	7.45	6.19	
			for 4.0' core length				
	(407.5-410.0) only 4" core - phyll. shale with qtz. fragments with traces of CuFeS ₂	11722		0.2	1.51	0.60	
	(410.0-413.0) core lost one foot - 5" of massive Pb, minor Zn, CuFeS, FeS ₂	11723	0.5	14.3	24.69	5.19	
	(431.5-435.0) core lost - one foot of white qtz. with patches of CuFeS ₂						
	(435.0-439.5) core lost 3.5' - white qtz. with veinlets of CuFeS ₂ .						
	(449.5-452.0) strongly contorted with qtz. and carb. crenulation - 5" of qtz. and Carb. with predominant Zn.	11724	1.2	Tr	Tr	1.09	Tr
	(452.0-453.0) one foot of sheared qtz. with speckles of Pb - Zn - CuFeS ₂ .	11725	1.0	Tr	Tr	0.99	Tr
	(453-458) - strongly contorted with qtz. crenulation,						
	(455.0-458.0) caving.						
458.0-474.5	<u>Vein Zone</u>						
	(458.0-464.5) qtz. and carbonate with predominant massive Zn and Pb - minor CuFeS ₂	11726	2.0				
	(464.5-472.0) selective replacement with bands to 8" mainly qtz. and carb. gangue - min. as above.	11727	2.0	2.8	2.45	10.13	
		11728	1.0	3.3	11.08	17.88	
	(472.0-474.5) only 2' core - rusty qtz. with predominant FeS ₂ , - minor Pb and Zn	11729	1.5	9.6	4.87	11.36	
		11730	2.5	1.1	2.49	10.08	
		11731	1.0 sample represents 1.				
		11732	1.5' sampled rep. 3.5'				
		11733	2.0' " " 4.0'				
474.5-500.0	<u>Phyllitic shale</u> - (474.5-477.0) - sheared and gaugy						
	(477.0-484.5) core lost 6 feet - as above within parts, mud seams						
	(484.5-500.0) sch. 10° to core axis.						
		11732		0.1	0.23	1.09	Tr
		11733		0.3	1.12	4.50	Tr

Core recovery in vein zone 100% approx.
 " " overall 92%

(see following page for Assay Summary)

	<u>Sample no.</u>	<u>From</u>	<u>To</u>	<u>Length</u>	<u>Ag</u>	<u>Pb</u>	<u>Zn</u>	<u>Sb</u>
Vein Zone 398.0-404.0	11716	398.0	398.8	0.8	Tr	Tr	0.26	Tr
	11717	398.8	399.8	1.0	0.2	1.63	Tr	Tr
	11718	399.8	401.0	1.2	3.2	13.35	5.73	1.45
	11719	401.0	402.5	1.5	0.4	1.43	6.18	.03
	11720	402.5	404.0	1.5	2.9	9.55	6.97	.20
399.8-404.0		Average for		4.2'	2.1	7.45	6.19	.50
		Average for		6.0	1.47	5.20	4.32	.35
Vein Zone 460.0-467.0	11727	460.0	462.0	2.0	2.8	2.45	10.13	1.18
	11728	462.0	463.0	1.0	3.3	11.08	17.88	2.90
	11729	463.0	464.5	1.5	9.6	14.87	11.36	.35
	11730	464.5	467.0	2.5	1.1	2.49	10.08	.22
460.0-467.0		Average for		7.0	3.72	6.37	11.49	.91

DIAMOND DRILL RECORD

PROPERTY MATT BERRY MINES LIMITED

HOLE NO. 26

SHEET NUMBER 1
LATITUDE N 10259
DEPARTURE E 10470
ELEVATION 2643

SECTION FROM _____ TO _____
DATUM Francis Lake (2510)
BEARING _____
DIP - 90°

STARTED November 22, 1969
COMPLETED November 24, 1969
ULTIMATE DEPTH 409.5'
PROPOSED DEPTH 600'

Logged: H.S. Gerson
Drilled by: Arctic Drilling

DEPTH FEET	FORMATION	FORMATION	Ave.	SAMPLE NO	WIDTH OF SAMPLE	Ag	Pb	Zn
0 - 20	OVERBURDEN							
20 - 368	PHYLLITIC SHALE							
	Dark grey to black in colour; strongly schistose; 25° to 35° to core axis; in places rock intensely crumpled, some mud seams; some quartz stringers with varying minor amounts of disseminated pyrite ;							
	72 - 115 Highly contorted; some crush zones; in places brecciated and cemented by quartz-carbonate gangue; numerous slips and fractures down dip of core							
	115 - 152 Schistosity 45° to core axis							
	152 - 214 Core all broken up; some crush zones and breccia zones as well as parallel slips cutting core at 5° - 10° to core axis							
	166 Mud seam							
	189.5 - 190 Mud seam							
	214 - 299.5 Poor core recovery; mud seams, crush zones and breccia zones							
	270 - 272 Mud seam							
	275.5 - 276 Mud seam							
	282.5 - 282.7 Mud seam							
	284.5 - 290.5 Mud seams							
	299.5 - 323 Fair core recovery; only occasionally broken up, contorted or brecciated; some slips and fractures down dip of core							
	323 - 368 Phyllitic shale more highly contorted; mud seams more frequent; in places shale broken up and mixed with vein (quartz) material; in places shale intensely shattered							
	324 - 330.5	Quartz-carbonate vein with intercalated highly shattered phyllite; (Antimony NIL)		13076	6.5	0.80	0.03	0.05

Depth	Formation	Sample No	Length	Ag	Pb	Zn
368 - 409.5	<p>332- 358 Section intensely altered to a talcose-sericitic facies; in places the core is all broken up by slips (20° to core axis)</p> <p>368.5 - 369 Mud seam</p> <p>370 - 375.5 Quartz-carbonate vein; minor sphalerite and some specs of galena observed for the first time (Antimony NIL)</p> <p>375.5 - 377.5 Mud seam</p> <p>377.5 - 379 Mud seam with vein material sprinkled throughout</p> <p>379 - 382 Quartz-carbonate vein material ;mainly fine pyrite, disseminated, and sphalerite still minor in amount (Antimony NIL)</p> <p>382 - 385 Mud seam</p> <p>394 - 397 Mud seam</p> <p>397 - 409.5 Crumple zone with some mud seams intercalated.</p> <p>403.5 - 407 Core all broken up by slips down dip of hole</p>	13097	5.5'	0.70	0.47	0.16
		13098	3.0'	Trace	0.03	0.07
409.5	<p>End of Hole No.26</p> <p>Core Recovery 71.2% BQ Core</p> <p>This hole was stopped at 409.5 feet before reaching the Matt Zone. The drill rods were stuck and the drill crew were afraid of losing their string of rods, core barrel, etc.</p> <p>The potential ore section of the Matt Zone would have been intersected at 505 feet in this hole</p>					

S. L. ...

DIAMOND DRILL RECORD

PROPERTY MATT BERRY MINES LIMITED

HOLE NO. 26A

SHEET NUMBER 1

SECTION FROM _____ TO _____

STARTED November 27, 1969

Logged : H.S. Garson

LATITUDE N 10259

DATUM Francis Lake (-2540)

COMPLETED December 2, 1969

Drilled by : Arctic Drilling

DEPARTURE E 10470

BEARING Azimuth 161.00

ULTIMATE DEPTH 492'

ELEVATION 2643

DIP -70°

PROPOSED DEPTH 600'

DEPTH FEET	FORMATION	FORMATION	Ave.	SAMPLE NO	WIDTH OF SAMPLE	Ag	Pb	Zn
0 - 16	OVERBURDEN							
16 - 397	PHYLLITIC SHALE							
<p>16 - 216 Dark grey to black in colour; strongly schistose; 45° to 60° to core axis; in places intensely crumpled; a few mud seams and shatter zones noted; some breccia zones cemented by fine, hairlike quartz stringers; some slips and fractures down dip of core.</p> <p>216 - 273 Intensely altered (talcose facies) and broken up; brecciated and cemented by quartz and carbonate with only fair to minor amounts of sulphides filling cracks and consisting mainly of pyrite</p> <p>273 - 291 Fair to good core recovery; angle of foliation to core -45°</p> <p>293 - 308 Shatterzone and mud seams</p> <p>314 - 397 Intensely altered, highly contorted talcose facies; shatter zones and mud seams more prominent; angle of foliation to core -50°</p> <p style="padding-left: 40px;">391.5 - 397 Core all broken up, only bits and pieces recovered</p> <p style="padding-left: 40px;">396.7 - 397 Mud seam</p>								
397 - 411	Hanging Wall of MATT ZONE (32% core recovered)							
397 - 402	Only 6" recovered; bits and pieces of vein quartz with disseminated pyrite							
402 - 403	Mud seam							
403 - 405	Missing							

Depth	Formation	Sample No	Length	Ag	Pb	Zn
405 - 407	(Antimony NIL) 405 - 405.5 Quartz-carbonate gangue material carrying fair amount of disseminated sulphides, mainly pyrite with very minor amounts of sphalerite and chalcopyrite 405.5 - 407 12" of bits and pieces of core; fair amount of sulphides, pyrite predominates with the odd spec of galena	13077	2.0'	0.07	0.24	0.07
407 - 409.5	6" of broken up core; mainly talcose-sericitic facies of phyllitic shale					
409.5 - 411	Mud seam					
411 - 433	MATT ZONE					
411 - 422	(53% core recovered)					
411 - 414	(Antimony NIL) Only 3" of broken up core recovered; quartz-carbonate gangue, fairly well mineralized by sulphides; pyrite with minor amounts of sphalerite and galena	13078	3.0'	0.01	0.05	0.06
414 - 416	(Antimony NIL)	13079	2.0'	0.50	0.55	0.09
416 - 417	(Copper 0.08)(Antimony 0.06) 414 - 417 28" of core recovered. Well mineralized sulphide section in quartz-carbonate gangue; 414 - 415.5 massive pyrite with some chalcopyrite; 415.5 sphalerite more prominent replacing pyrite, odd spec of galena	13080	1.0'	Trace	0.03	7.29
417 - 420	(Antimony 0.06) Only 2" of core recovered	13081	3.0'	0.40	0.34	0.42
420 - 421	(Antimony 0.06) Only 6" of core recovered; somewhat better sulphide mineralization	13082	1.0'	0.60	1.13	0.67
421 - 422	(Antimony 0.06) Only 6" of core recovered; lean section; very minor sulphide replacement	13083	1.0'	0.10	0.03	0.19
422 - 428.5	Potential ore section of Matt Zone (72% core recovered)					

Handwritten initials or signature in the bottom right corner.

Depth	Formation	Sample No	Length	Ag	Pb	Zn
422 - 424	(Antimony 0.06)	13084	2.0'	1.30	7.10	2.30
422 - 422.5	Sphalerite and galena more prominent					
422.5 - 424	Fair to good sulphide replacement					
424 - 426	(Antimony 0.06)	13085	2.0'	0.10	0.13	2.19
	Fair to good sulphide replacement; pyrite more prominent with some sphalerite replacing pyrite and only minor amounts of galena					
426 - 427.5	(Antimony Trace)	13086	1.5'	0.10	0.32	1.26
426 - 426.5	Bits and pieces of mineralized gangue recovered, all broken up and mixed up with shale					
426.5 - 429.5	Only 50% of core recovered					
426.5 - 427.5	Lean section, minor sulphide replacement noted					
427.5 - 428.5	(Antimony 0.06)	13087	1.0'	1.10	5.78	12.20
	More massive sulphide replacement; galena and sphalerite quite prominent					
428.5 - 433	Only 56% core recovered; quartz-carbonate gangue material carrying fair amounts of sulphide mineralization, all broken up and shattered and mixed up with mud seam and with broken up shale					
428.5 - 429.5	(Antimony Trace)	13088	1.0'	0.02	0.76	1.85
429.5 - 431.5	(Antimony Nil)	13089	2.0'	0.10	0.08	1.01
433 - 442	Footwall of MATT ZONE (56% core recovered)					
431.5 - 432.5	(Antimony Nil)	13090	1.0'	Trace	0.05	0.30
	Shale and gangue material (with fair sulphide mineralization) all broken up and mixed up					
432.5 - 436	(Antimony Nil)	13091	3.5'	Trace	0.05	0.09
432.5 - 433	Similar to 431.5 - 432.5					
433 - 435	Mud seam					
435 - 436	Bits and pieces of quartz-carbonate gangue					
436 - 438	(Antimony Nil)	13092	2.0'	Trace	0.05	0.06
436 - 436.5	Bits and pieces of core (mainly quartz-carbonate gangue)					
436.5 - 437.5	Fair sulphide mineralization					
437.5 - 438	Lean sulphide replacement					
438 - 441	(Antimony, Nil)	13093	3.0'	Trace	0.05	0.09
	Mud seam					

Depth	Formation	Sample No	Length	Ag	Pb	Zn
441 - 442	(Antimony Nil) Mud material and vein material all broken up and mixed up	13094	1.0'	Trace	0.05	0.10
442 - 489	PHYLLITIC SHALE					
442 - 454	Well banded shale					
454 - 456.5	(Antimony Nil) 454 - 456 Fair sulphide replacement of quartz-carbonate gangue; pyrite most prominent with sphalerite minor and galena very minor in amount 456 - 456.2 Mud seam 456.2 - 456.5 Well banded phyllite	13095	2.5'	0.10	0.03	0.06
456.5 - 477	Banded phyllite, coring nearly at right angles to the banding					
477 - 479	(Antimony Nil) Fair sulphide replacement of quartz-carbonate gangue; mainly pyrite with minor amounts of galena and sphalerite	13096	2.0'	0.90	0.58	0.17
479 - 489	Banded phyllite; angle of foliation to core -65°					
489	Sharp contact; contorted and brecciated and cemented by quartz and carbonate					
489 - 492	CHLORITIC-QUARTZOSE SCHIST					
	Greyish to white in colour, intensely altered quartz-mica-talc-chlorite schist with minor amounts of disseminated sulphides, mainly pyrite; angle of foliation to core -60°					
492	End of Hole No. 26A					
	Core Recovery 71% B ₂ Core					
	Drilling contractor did not have acid, clinometer or tubes on the job, so not possible to take dip tests as directed					

SUMMARY

Sample Number	Footage	Silver	Lead	Zinc	Antimony
13024	422-424	1.30	7.10	2.30	0.06
13025	424-426	0.10	0.13	2.19	0.06
13026	426-427.5	0.10	0.32	1.26	trace
13027	427.5-428.5	1.10	5.78	12.20	0.06
Average 6.5 feet		0.62	3.19	3.55	0.046

M.S. Conroy

DIAMOND DRILL RECORD

PROPERTY MATT BERRY MINES LIMITED HOLE NO. 27

SHEET NUMBER 1 SECTION FROM _____ TO _____ STARTED December 7, 1969 Logged : H.S. Gerson
 LATITUDE N 10650 DATUM Francis Lake (2540) COMPLETED December 8, 1969 Drilled by : Arctic Drilling
 DEPARTURE E. 10505 BEARING Azimuth 214-00 ULTIMATE DEPTH 70'
 ELEVATION 2677 DIP -70° PROPOSED DEPTH 800'

DEPTH FEET	FORMATION	FORMATION	Ave.	SAMPLE NO	WIDTH OF SAMPLE	Ag	Pb	Zn
0 - 17.5	OVERBURDEN							
17.5 - 70	PHYLITIC SHALE							
	Grey to black in colour; soft; schistose							
22 - 28	Mud seams							
32 - 50	6" core recovered; breccia zone							
50 - 52	Mud seams							
56 - 60	4" core recovered							
60 - 62	1" core recovered; quartz-carbonate gangue with fair amount of disseminated pyrite							
64.5 - 69.5	6" core recovered; bits and pieces of core showing shatter zone							
69.5 - 70	Mud seam							
70	End of D.D. Hole No. 27							
	Core Recovery 11.5%	BQ Core						

Bedrock so badly broken up and attempt was made to drive casing to the bottom of this hole. At 60 feet the ground was so bad an attempt was made to overcome this by using mud but without much success. It was decided to abandon this hole and make a fresh start about 30 feet from the present location.

H.S. Gerson

2084

DIAMOND DRILL RECORD

PROPERTY MATT BERRY MINES LIMITED

HOLE NO. 27A

SHEET NUMBER 1 SECTION FROM _____ TO _____ STARTED December 13, 1969 Logged : H.S.Gerson
 LATITUDE N 10646 DATUM Francis Lake (-2540) COMPLETED * December 20, 1969 Drilled by : Arctic Drilling
 DEPARTURE 10463 BEARING Azimuth 214-00 ULTIMATE DEPTH 377' * pro tem
 ELEVATION 2675 DIP -70° PROPOSED DEPTH 800'

DEPTH FEET	FORMATION	FORMATION	Ave.	SAMPLE NO	WIDTH OF SAMPLE	Ag	Pb	Zn
0 - 20	OVERBURDEN							
20 - 377	PHYLLITIC SHALE							
20 - 115	Very poor core recovery (34%) Grey to black shale, highly sheared and in places intensely altered to a talcose facies ; numerous mud seams, shatter zones and crush zones; numerous slips and fractures 74.5 Talcose facies predominates 108.5 Foliation -45° to core axis 113 - 115 Crush zone							
115 - 273	Good core recovery (80%) Grey to black shale; foliation -45° to core axis 119 - 122 Mud seam 122 - 125 Crush zone 125 - 130 Shatter zone 131 Mud seam 133 - 135 Mud seam 135 - 137.5 Shatter zone 147 - 149 Shatter zone 154 4" Shatter zone 154.5 - 166.5 Quartz-carbonate stringers, from one inch to five inches in width, more conspicuously mineralized by sulphides, mainly pyrite, filling cracks 156 Foliation -55° to core axis 161 Foliation -65° to core axis 174 - 177.5 Crush zone 177.5 - 180 Brecciated and cemented by quartz and carbonate 196 - 196.5 Crush zone 198.5 - 202 No core (Mud seam?) 198.5 - 219 Very poor core recovery							

Depth	Formation	Sample No	Length	Ag	Pb	Zn
(115 - 273	Continued)					
220	Black shale, foliation -65° to core axis					
229 - 242	Very poor core recovery					
229 - 230.7	Shatter zone					
233	3" Mud seam					
234	6" Quartz-carbonate vein, minor to nil sulphides ; 236.5 3" quartz vein, fair sulphides					
237 - 237.5	Shatter zone					
244 - 245	Shatter zone					
246 - 246.5	Shatter zone					
247.5 - 248	Shatter zone					
273 - 329.5	Very good core recovery (87%)					
273- 274	Roll in the formation; hairlike cracks filled with quartz and carbonate					
278 - 278.5	Roll in the formation					
284	Foliation -60° to the core axis					
289.5	Roll in the formation					
290.5	6" Shatter zone					
303	Foliation -90° to the core axis					
314.5	3" Shatter zone					
323.5	2" Shatter zone					
327.3	Roll in the formation					
328.8 - 329.5	Shatter zone					
329.5 - 362.5	Very good core recovery (95%)					
	Although the core itself is all shattered and broken up (in appearance) ; the drill appears to be going along the flat part of a roll in the formation; all the fractures and contortions going down dip; from 338 to 343, the core came out in four pieces even though it is quite soft ; quartz stringers quite contorted and down dip					
350 - 351.5	Brecciated and cemented by quartz; vuggy ; fair amount of very fine sulphides mainly pyrite					
352.5 - 355	Breccia zone					
355 - 358	Vein quartz, all broken up in the core tube; carrying fair to minor amounts of very fine sulphides, mainly pyrite					
358 - 360	Quartz-carbonate vein material, ground up, broken up and mixed up with ground up and broken up shale; vein material and shale carries fair amount of very fine sulphides disseminated all through this broken up material					
360.2	9" Quartz-carbonate vein; fair amount of very fine sulphides, mainly pyrite, filling hairlike cracks					
361 - 362.5	Shattered and altered shale (talcose schist) , all broken up					

Depth	Formation	Sample No	Length	Ag	Pb	Zn
-------	-----------	-----------	--------	----	----	----

362.5 - 377 Very poor core recovery (14%)
 362.5 - 364 Quartz-carbonate vein, very fine sulphides, mainly pyrite
 364.0 - 365.5 Bits and pieces of vein material .
 365.5 - 370.5 Core ground up and missing
 370.5 - 371.0 Shale
 371.0 - 377.0 Core ground up and missing

377.0 Hole stopped due to difficult drilling conditions and closing down for holidays

Core Recovery 67% BQ Core

It was expected to intersect the potential ore section of the Matt Zone at a depth of 665 feet.

W.S. Gerson

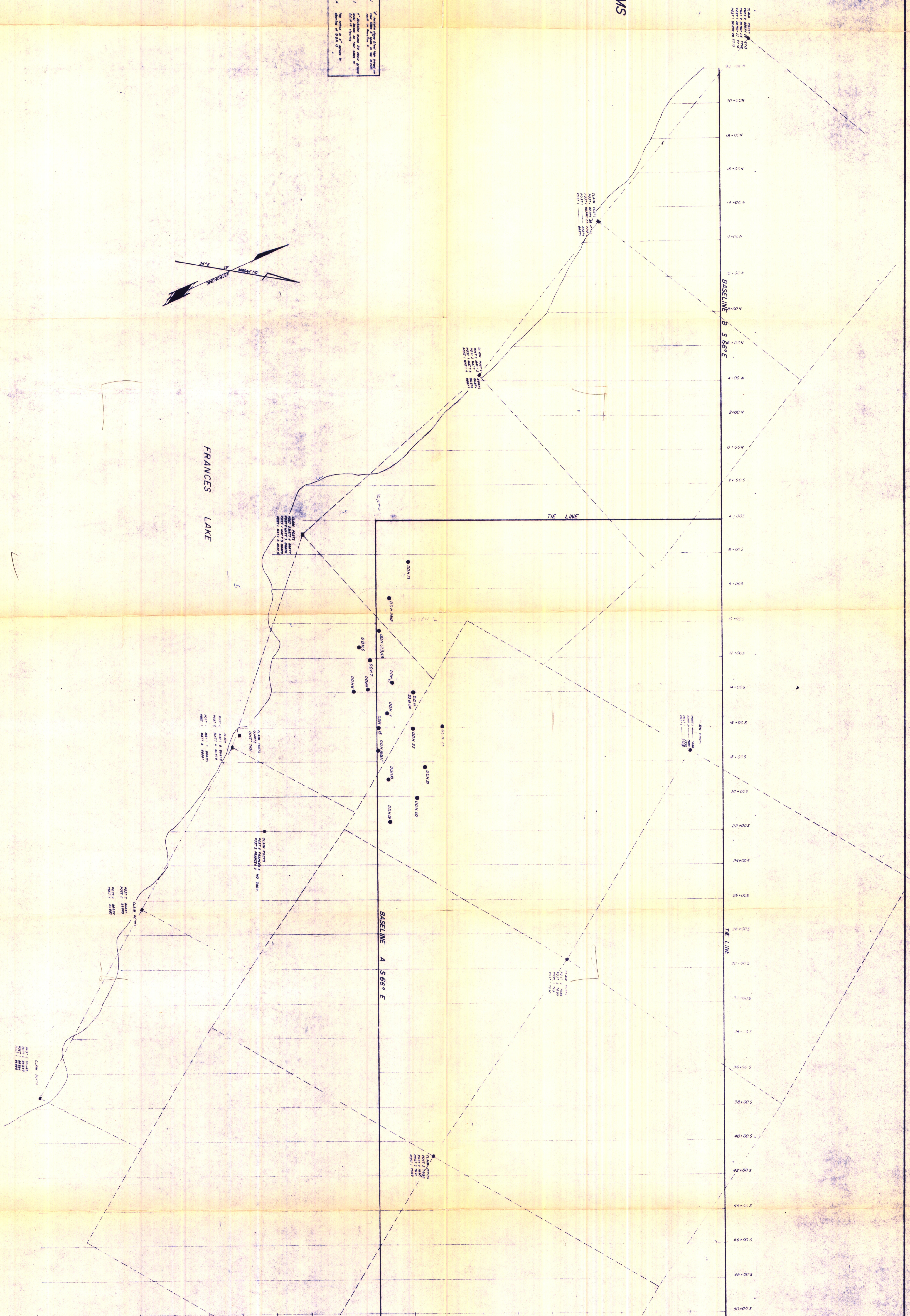
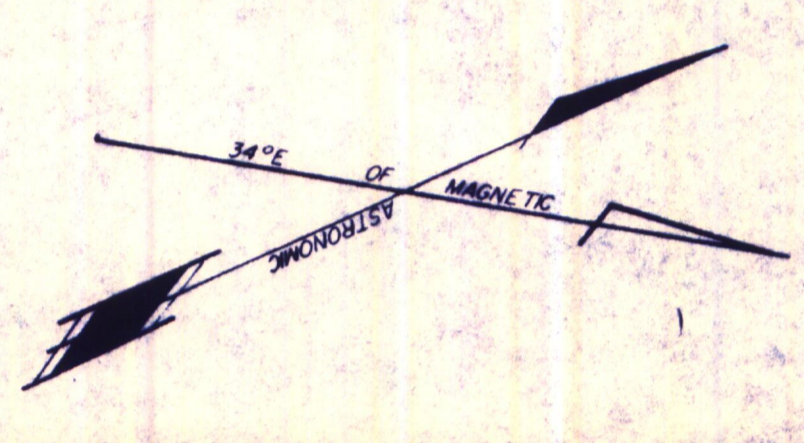
PLAN SHOWING
GRID, D.D. HOLES & CLAIMS
 MATT BERRY MINES LTD.
 FRANCES LAKE
 SCALE 1" = 200'

LEGEND
 MAGNETIC DECLINATION N 3 3/4° E
 ELEVATIONS ARE DERIVED FROM HUB 5,
 WITH ELEVATION OF 2719.94
 DISCONTINUITY LOCATION OF CLAIMS SHOWN
 NO ATTEMPT WAS MADE TO DETERMINE
 VALIDITY OF PRIORITY

CERTIFIED CORRECT
Paul F. White

POINT	ELEVATION	COORDINATES
1	2621.9	4219.5 N 11 E
2	2623.9	4219.5 N 11 E
3	2623.9	4219.5 N 11 E
4	2623.9	4219.5 N 11 E
5	2623.9	4219.5 N 11 E
6	2623.9	4219.5 N 11 E
7	2623.9	4219.5 N 11 E
8	2623.9	4219.5 N 11 E
9	2623.9	4219.5 N 11 E
10	2623.9	4219.5 N 11 E
11	2623.9	4219.5 N 11 E
12	2623.9	4219.5 N 11 E
13	2623.9	4219.5 N 11 E
14	2623.9	4219.5 N 11 E
15	2623.9	4219.5 N 11 E
16	2623.9	4219.5 N 11 E
17	2623.9	4219.5 N 11 E
18	2623.9	4219.5 N 11 E
19	2623.9	4219.5 N 11 E
20	2623.9	4219.5 N 11 E
21	2623.9	4219.5 N 11 E
22	2623.9	4219.5 N 11 E
23	2623.9	4219.5 N 11 E
24	2623.9	4219.5 N 11 E
25	2623.9	4219.5 N 11 E

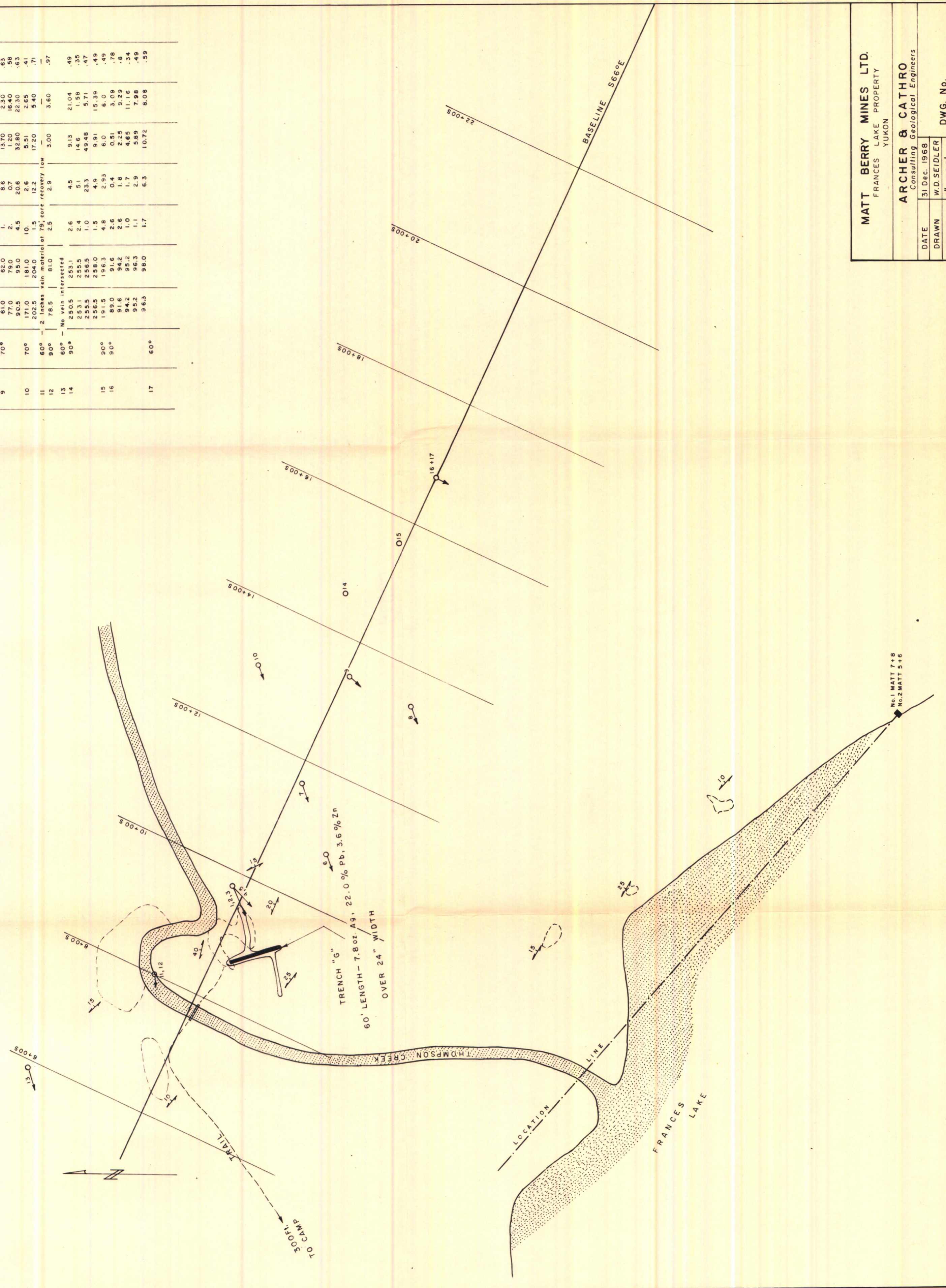
BM 1	2782.1	4219.5 N 11 E
BM 2	2804.8	4219.5 N 11 E
BM 3	2843.4	4219.5 N 11 E



DIAMOND DRILL RESULTS

HOLE NO	ANGLE	FROM	TO	WIDTH ft.	Ag (oz/ton)	%Pb	%Zn	Ag Pb RATIO
1	30°	40.0	43.5	3.5	2.3	6.25	11.69	.36
2	60°	66.0	68.0	2.0	21.4	45.84	14.54	.46
3	90°	41.0	40.0	1.0	6.1	10.65	10.34	.57
4	90°	57.0	62.0	5.0	7.9	16.34	13.01	.49
5	90°	45.5	48.5	3.0	0.6	0.30	1.74	.17
6	60°	64.5	65.5	1.0	1.0	2.60	13.39	.39
7	60°	36.0	37.0	1.0	2.8	8.38	9.49	.33
8	90°	42.0	44.0	2.0	4.7	12.09	2.83	.39
9	90°	55.0	57.0	2.0	4.2	10.13	8.74	.41
10	60°	39.0	47.0	8.0	0.7	1.00	7.50	.29
11	60°	84.0	87.0	3.0	3.9	13.54	13.50	.80
12	90°	80.0	97.0	17.0	4.6	7.60	15.50	.80
13	90°	61.0	62.0	1.0	8.6	13.70	2.30	.63
14	90°	77.0	79.0	2.0	0.7	1.20	16.40	.58
15	90°	90.5	95.0	4.5	20.6	32.80	22.30	.63
16	90°	171.0	181.0	10.0	2.6	5.51	2.65	.41
17	60°	202.5	204.0	1.5	12.2	17.20	5.40	.71
		2 inches vein material at 79, core recovery low						
		No. vein intersected						
11	60°	78.5	81.0	2.5	2.9	3.00	3.60	.97
13	60°	290.5	293.1	2.6	4.5	9.13	21.04	.49
14	90°	253.1	255.5	2.4	5.1	14.6	1.58	.35
15	90°	255.5	256.5	1.0	23.3	49.48	5.71	.47
15	90°	256.5	258.0	1.5	4.9	9.91	15.39	.49
16	90°	191.5	196.3	4.8	2.93	6.0	6.0	.49
16	90°	89.0	91.6	2.6	0.4	0.51	3.09	.78
16	90°	91.6	94.2	2.6	1.8	2.25	5.29	.8
16	90°	94.2	95.2	1.0	1.7	4.65	11.16	.34
16	90°	95.2	96.3	1.1	2.9	5.89	7.98	.49
16	90°	96.3	96.0	1.7	6.3	10.72	6.08	.59

LEGEND
 DIAMOND DRILL HOLE
 VEIN AT SURFACE
 BEDROCK EXPOSURE
 LOCATION LINE



MATT BERRY MINES LTD.
 FRANCES LAKE PROPERTY
 YUKON

ARCHER & CATHRO
 Consulting Geological Engineers

DATE 31 Dec. 1968
 DRAWN W.D. SEIDLER
 SCALE 1" = 100'

DWG. No.