

P.O. Box 269,  
Watson Lake, Y.T.  
YOA 1C0

1 May, 1979

Your file    Votre référence

Our file    Notre référence

REGIONAL DIRECTOR RESOURCES

Attention: Supervising Mining  
Recorder

REGISTERED MAIL

RESTRICTED

Enclosed, for your information, are two groups of diamond  
drilling logs as follows:

- 1.) Pelly Group, 105-G-14 - Kerr Addison Mines Limited  
3 holes drilled on PELLY 62 and 73 mineral claims  
Core is stored at Lily Lake Camp (Pelly 72)  
443.5 metres drilled - total cost \$33,699.30
  
- 2.) Mel Group, 95-D-6 - St. Joseph Explorations Ltd.  
6 holes drilled on JEAN 3 and 4 mineral claims  
Core is stored at the Mel property  
1526.35 metres drilled - total cost \$60,000.00

Yours truly,

*V.W. Johanson*  
for V.W. Johanson  
Mining Recorder  
Watson Lake District

encl.  
:dj

cc: Regional Geologist

091167

# DIAMOND DRILL RECORD

LOGGED BY

*J. Chow*

021167

PROPERTY *Finlayson Lake Project - Pelly M.C. Group*

LATITUDE *150°* BEARING OF HOLE *—* STARTED *12 Sept. 1978*

DEPARTURE *500'* DIP OF HOLE *-90°* COMPLETED *17 Sept. 1978*

ELEVATION *2900 (884m) approx.* DIP TESTS *—* Proposed: *150 m. approx.*  
DEPTH Ultimate: *84.4m*

D.D.H. No. *KP 78-1* PAGE *1 of 5*  
CLAIM No. *Pelly 73*  
DIRECTION AND DISTANCE FROM  
NE. CLAIM POST

SIZE:  $0.20' \times 6.7' = NW$ ;  $6.7' - 12.2(40') = BN$ , TARGET: E.M., Geochem. Gravity anomaly  
 $12.2 - 84.4 = BR.$

FOOTAGE - meters		DESCRIPTION	Rec. Ft. m	Sample No.	Footage m		Sample Length	Assay ppm					Assay x Feet m					
FROM	TO				From	To		Pb	Zn	Ag	Au	Cu	Pb	Zn	Ag			
0	6.7	OVERBURDEN.  No core recovered. Driller report sand and small gravel in hole. Drilled ahead with BQ and BW.																
6.7		QUARTZ - GRAPHITE PHYLLITE - Gray Black  Core broken along fractures, also along foliation planes. Variable hardness, governed by amount of siliceous quartz, extremely hard to medium hard; soft @ (7-7.5'). Graphite varies from 2% to 30%, minor pyrite cubes noted. Weathered brick-brown rusty spots and layers. No Pb Zn noted.  Note: Section from 6.7-11.0m is the only section of this drill hole where F <sub>2</sub> may be the structure in evidence. Both F <sub>1</sub> & F <sub>2</sub> do not co-exist or <del>intersect</del> the core is so highly broken and core recovery is so poor that neither can be determined definitely.  F <sub>1</sub> (?) @ 15° @ 6.7', 70° @ 7', tight fold @ 7.7' - axial plane @ 20° to core. 7.7-9m too broken.																
			0.5/2.3			6.7	9.0											
			0.2/1.1	KP 78-1A		7.7	9.0	1.1	15	80			92					
9.0	11.0	QUARTZ - SERICITE PHYLLITE  Light orange-ochre with bands & threads of light to medium gray sericite. Very banding similar to Groun F <sub>2</sub> , also few distinct fold noses. F <sub>1</sub> (?) 40-45°																
			0.55/2.0			9.0	11.0											

RECEIVED  
1979  
LOGGING RECORDER  
WATSON LAKE Y.T.  
J.A. & W.D.







*J. L. Shaw*

Interval		DESCRIPTION	Recovery	Sample N <sup>o</sup>	Interval		Sample Length	Assay ppm					Assay %			
From	To				From	To		Pb	Zn	Ag	Au	Cu	Pb	Zn	Ag	
<i>76.8</i>	<i>78.3</i>	<i>No Core</i> <i>Cuttings black, graphitic, 5% pyr, no Pb Zn seen.</i>	<i>NIL</i> <i>/1.5</i>	<i>KP98</i> <i>-1F</i>	<i>76.8</i>	<i>78.3</i>	<i>sludge</i> <i>1.5</i>	<i>12</i>	<i>350</i>				<i>370</i>			
<i>78.3</i>	<i>79.9</i>	<i>Quartz - Graphite Phyllite. Black.</i> <i>70-80% qtz, 1 pyr. Siliceous + hard. Appear to be highly fractured + folded</i> <i>F1 25° @ 79.4 (?)</i>	<i>0.3</i> <i>/1.6</i>		<i>78.3</i>	<i>79.9</i>										
<i>79.9</i>	<i>81.1</i>	<i>Quartz - Sericite - Graphite Phyllite. Med. Gray</i> <i>80% qtz, 10/10 ser/graph. Sil + hard. Appear to be less fractured than section above. Slightly fissile.</i> <i>Negligible pyr. F1 40-50°</i>	<i>0.35</i> <i>/1.2</i>		<i>79.9</i>	<i>81.1</i>										
<i>81.1</i>	<i>84.4</i>	<i>Qtz - Ser - Graph Phy. Med. to Light Gray.</i> <i>50% qtz, 30 ser, 20 graph, negli pyr (blebs). Very thinly foliated, fissile, waxy + crumpled. F1 probably drag-folded. F2 faint but distinguishable from 82.8-84.4".</i> <i>F1 40° @ 81.3-81.6", 55° @ 81.8, 80° @ 82.5, 65-80° @ 82.6-84. F2 near vert. to F1.</i>														
<i>84.4"</i>	<i>END OF HOLE</i>															
		<p><i>Remarks =</i></p> <ul style="list-style-type: none"> <li><i>① E.M. anomaly totally or partly caused by graphitic rocks.</i></li> <li><i>② Geochem + gravimetry high not explained.</i></li> <li><i>③ Various means + methods were tried to obtain core recovery.</i></li> <li><i>④ At 81.1", a different type of drill bit was used to try for better core recovery (Saw 50' hand matrix) - fewer but larger diamonds. Improved core recovery thereafter may be due to a change of rock type plus a change in <del>the</del> the dip of rocks.</i></li> </ul> <p><i>Note: 20 feet of NN casing left in hole.</i></p>														

# DIAMOND DRILL RECORD

LOGGED BY F CHOW<sup>7063.6</sup> & W. MURTON<sup>763.6</sup>

~~021167~~ 021167

PROPERTY FINLAYSON LAKE PROJECT - PELLY CLAIMS

LATITUDE 27SN BEARING OF HOLE 194° STARTED SEPT 20/78 D.S

DEPARTURE 500E DIP OF HOLE -60° COMPLETED SEPT 29/78 NS

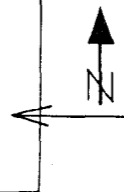
ELEVATION 2910 ft (887m) DIP TESTS — Proposed: DEPTH Ultimate: 171.2 m  
 TARGET: Gravity + EM anomaly

D.D.H. No. KP 78-2 PAGE 1 of 8

CLAIM No. PELLY 73

DIRECTION AND DISTANCE FROM

NE. CLAIM POST



20' N CASING LEFT IN HOLE. BR core.

FOOTAGE <small>meters</small>		DESCRIPTION	Rec. Ft. <sup>m</sup>	Sample No.	Footage <sup>m</sup>		Sample Length	Assay					Assay x Feet				
FROM	TO				From	To		Pb	Zn	Ag	Au	Cu	Pb	Zn	Ag		
0	9.8	OVERBURDEN															
9.8	10.1	QUARTZ GRAPHITE SERICITE PHYLLITE. GREY/BLACK 75-80% QUARTZ, 15% GRAPHITE, 5% SERICITE. A FEW PYRITE XTALS & BLEBS. 1-2% RUSTY STAIN ALONG FOLIATION PLANES. SILICEOUS & HARD THOUGH MODERATELY FISSILE. F <sub>2</sub> 75°-80°. F <sub>1</sub> 30°-90° TO F <sub>2</sub> , FAINTLY VISIBLE LOCALLY	0.3	103													
10.1	11.5	QUARTZ SERICITE ± GRAPHITE PHYLLITE. MEDIUM GREY. 55-60% QUARTZ, 35-40% SERICITE, 2-5% GRAPHITE. A FEW PYRITE BLEBS. NEGLIGIBLE OXIDATION. F <sub>2</sub> 60°-80° - WAVY & KINKY. F <sub>1</sub> 60°-90° TO F <sub>2</sub> LOCALLY DISTINCT	0.7	114													
11.5	12.8	QUARTZ SERICITE GRAPHITE PHYLLITE? PROBABLE CAVE IN HOLE?	0.1	113													
12.8	15.8	QUARTZ GRAPHITE I SERICITE PHYLLITE, DARK GREY. 80-90% QUARTZ. LOCALLY SERICITE. NEGLIGIBLE OXIDATION. SILICEOUS & HARD -	0.45	130													

RECEIVED  
 1979  
 DIAMOND RECORDS  
 FINLAYSON LAKE, Y.T.  
 T.S. & M.D.















# DIAMOND DRILL RECORD

LOGGED BY J. W. MURTON

~~021007~~

021167

PROPERTY FINLAYSON LAKE PROJECT - PELLY CLAIMS

D.D.H. No. KP 78-3 PAGE 1 of 3

LATITUDE 70° 0' N BEARING OF HOLE 194° STARTED OCT 1/78 (DS)

CLAIM No. PELLY 62

DEPARTURE 500 F DIP OF HOLE -60° COMPLETED OCT 5/78 (NS)

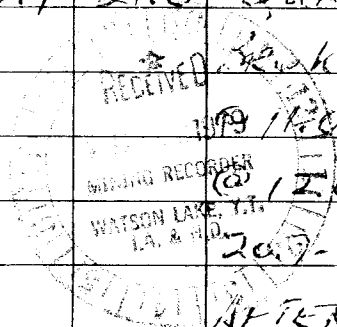
DIRECTION AND DISTANCE FROM

ELEVATION 2730' DIP TESTS — DEPTH Proposed: 187.7 m.  
Ultimate: 187.7 m.  
TARGET: EM Anomaly

NE. CLAIM POST



FOOTAGE <i>meters</i>		DESCRIPTION	Rec. Ft. #	Sample No.	Footage <i>m</i>		Sample Length	Assay					Assay x Feet				
FROM	TO				From	To		Pb	Zn	Ag	Au	Cu	Pb	Zn	Ag		
0	10.9	OVERBURDEN 10' IN CASING 36' B CASING - LEFT IN HOLE															
10.9	21.6	QUARTZ GRAPHITE SERICITE PHYLLITE. ALL BROKEN LIMONITE ON FRACTURES F <sub>2</sub> ? @ 90°	1.2/1.6	—	10.9	12.5											
		19120. SCATTERED FAULT ZONES WITH MUD @ 12.0-12.5, CORE LOST (SLUDGE IN BOX) AT 13-14,	0.4/3.0	—	12.5	15.5											
		20.7-21?, 23.4-24? NO APPARENT LIMONITE AFTER 19.8 SLIGHT DISSEMINATED BY 1-2%.	0.2/1.2	—	15.5	16.7											
			3.3/4.0	—	16.7	20.7											
21.6	34.2	QUARTZ ZONE. WHITE QUARTZ & GRAPHITE. HIGH CORE LOSS - ALL BROKEN, SLUDGE IN BOX. LOOKS LIKE QUARTZ ZONE AT EDGE OF FAULT ZONE. PROBABLE FAULT ZONES THROUGHOUT SECTION. 1-2% DISS. PYRITE, RUSTY OXIDATION SPORADICALLY 31.0-34.0.	1.3/4.6	—	20.7	25.3											
			0.5/5.5	—	25.3	31.1											
			0.8/3.1	—	31.1	34.2											
34.2	35.8	QUARTZ GRAPHITE PHYLLITE? (MAYBE A GRAPHITIC QUARTZITE) BANDING F <sub>1</sub> ? 60°- 90° TO CORE. SCATTERED WHITE QUARTZ STRINGERS UP TO .5 CM	5.7/5.7	—	34.2	35.8											







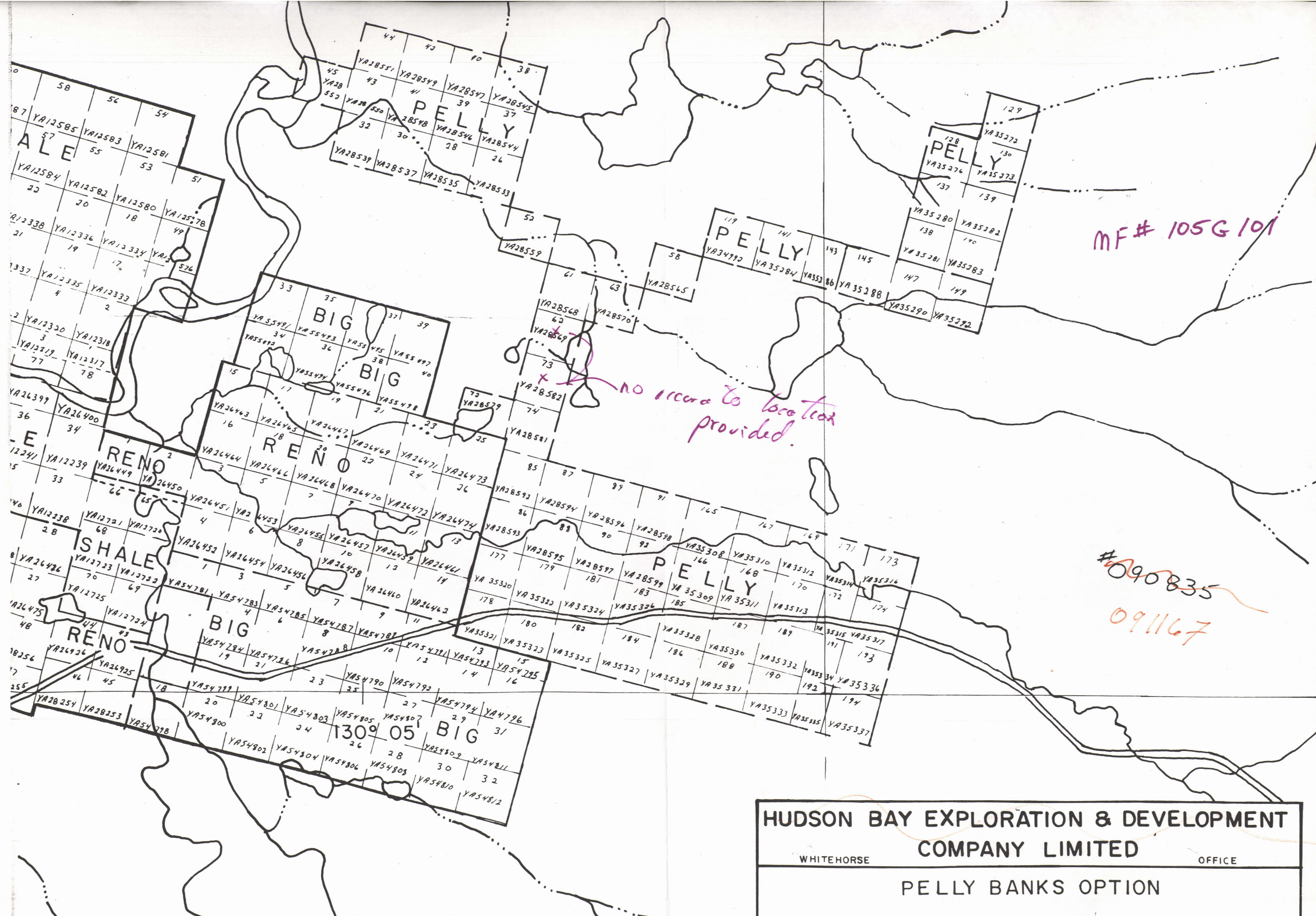












MF# 105G101

no record to location provided.

#090835  
091167

HUDSON BAY EXPLORATION & DEVELOPMENT  
COMPANY LIMITED  
WHITEHORSE OFFICE  
PELLY BANKS OPTION  
CLAIM LOCATIONS

KERR ADDISON MINES LIMITED

SUITE 703 - 1112 WEST PENDER STREET  
VANCOUVER, B.C. V6E 2S1  
PHONE 682-7401

April 17th, 1979

09/1167

Mr. V.W. Johanson,  
Mining Recorder,  
Watson Lake Mining District,  
P.O. Box 269,  
WATSON LAKE, Y.T.,  
YOA 1C0.

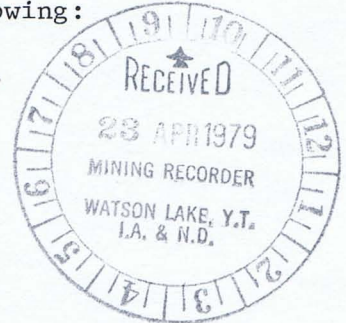
Dear Sirs:

Re: Filing of Assessment Work on Pelly Mineral Claims -  
Nos. 26,28,30,32,37-45 incl., 52,58, 61-63 incl.,  
72-74 incl., 85-92, 93 Fr., 119, 128-130 incl.,  
137-140 incl., 141, 143, 145,147,149,165-174 incl.,  
177-192 incl., Total of 69.

Herewith enclosed duplicate copies each of Form "C" Applications for Certificate of Work plus forms for Applications to Group Mineral Claims, for filing assessment work on the Pelly Mineral Claims.

Also enclosed are duplicate copies of the following:

1. Arctic Diamond Drilling Ltd., (2 invoices).
2. Terr Air (2 invoices).
3. MacPheat Expediting Ltd.
4. Diamond Drill Records (3 holes).
5. Location Plan and Diamond Drill Holes.
6. Grouping Plans (5 groups).



The necessary fees are as follows:

Group #1	16 claims for 2 3/4 years @ \$5.00/claim year	=	\$220.00
Group #2	✓2 claims for 2 3/4 years @ \$5.00/claim year	=	27.50
Group #2	✓13 claims for 2 1/2 years @ \$5.00/claim year	=	162.50
Group #3	✓5 claims for 2 3/4 years @ \$5.00/claim year	=	68.75
Group #3	✓11 claims for 2 1/2 years @ \$5.00/claim year	=	137.50
Group #4	✓6 claims for 2 3/4 years @ \$5.00/claim year	=	82.50
Group #4	✓8 claims for 2 1/2 years @ \$5.00/claim year	=	100.00
Group #5	✓8 claims for 2 1/2 years @ \$5.00/claim year	=	100.00
Applications to Group, 5 @ \$5.00 each			25.00
			<u>\$923.75</u>

Our cheque in the amount of \$923.75 is enclosed to cover the fees.

398.75  
500  
25

Yours truly,

*F. Chow*  
F. Chow

FC:lg  
Encl.

