

DD65



Indian and  
Northern Affairs

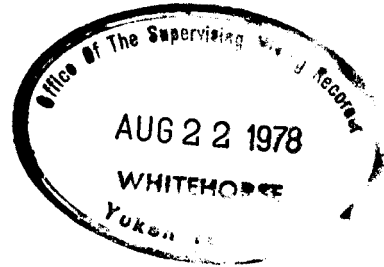
Affaires indiennes  
et du Nord

P. O. Box 269  
Watson Lake, Yukon  
YOA 1C0

17 August, 1978

Your file    Votre référence

Our file    Notre référence



REGIONAL DIRECTOR RESOURCES

Attention: Supervising Mining  
Recorder

RESTRICTED

REGISTERED MAIL

Please find enclosed a copy of Diamond Drill Logs and location map submitted by Newmont Exploration of Canada Limited for renewal of their JOE and CYR mineral claims in the McNeil Lake Area on claim maps 105-G-5 and 6. Total cost of the drilling is assessed at \$45,860.00.

Yours truly,

V. W. Johanson  
Mining Recorder  
Watson Lake Mining District

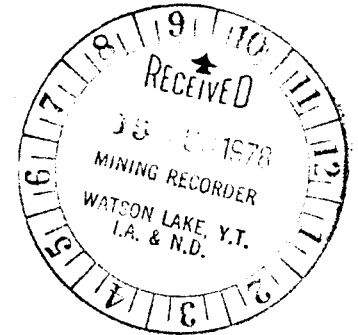
encl.  
PLM

02/15/80

## NEWMONT EXPLORATION OF CANADA LIMITED

Suite 1400 - 750 West Pender Street  
Vancouver, B.C. V6C 1K3

August 11, 1978

Mr. V. W. Johanson,  
Mining Recorder,  
P. O. Box 269,  
Watson Lake, Y. T.,  
YOA 1C0

Dear Mr. Johanson:

Enclosed are application forms for grouping and certificates of work for the JOE and CYR claims. Also enclosed are duplicate copies of drill logs and maps showing the location of the drill holes and core storage.

The drill hole locations relative to the nearest claim post are shown on the drill logs. Please note that core length distances are in meters. No assays are reported in the drill logs of Hole CYR 78-4 and Hole CYR 78-9 because none of this core was assayed.

A cheque for \$1,085.00 is enclosed to pay for grouping and recording work on the claims as follows:

JOE PROPERTY

Grouping Certificate - JOE 35-42	\$ 5.00
Certificate of Work - JOE 35-42 (3 years)	120.00
- JOE 2,4,6,8,10 (2 years)	50.00
- JOE 11-18 (1 year)	40.00
- JOE 19 Fr.,20,21 (1 year)	15.00
- JOE 1,3,5,7,9 (2 years)	50.00
- JOE 22 Fr-32 (2 years)	110.00

CYR PROPERTY

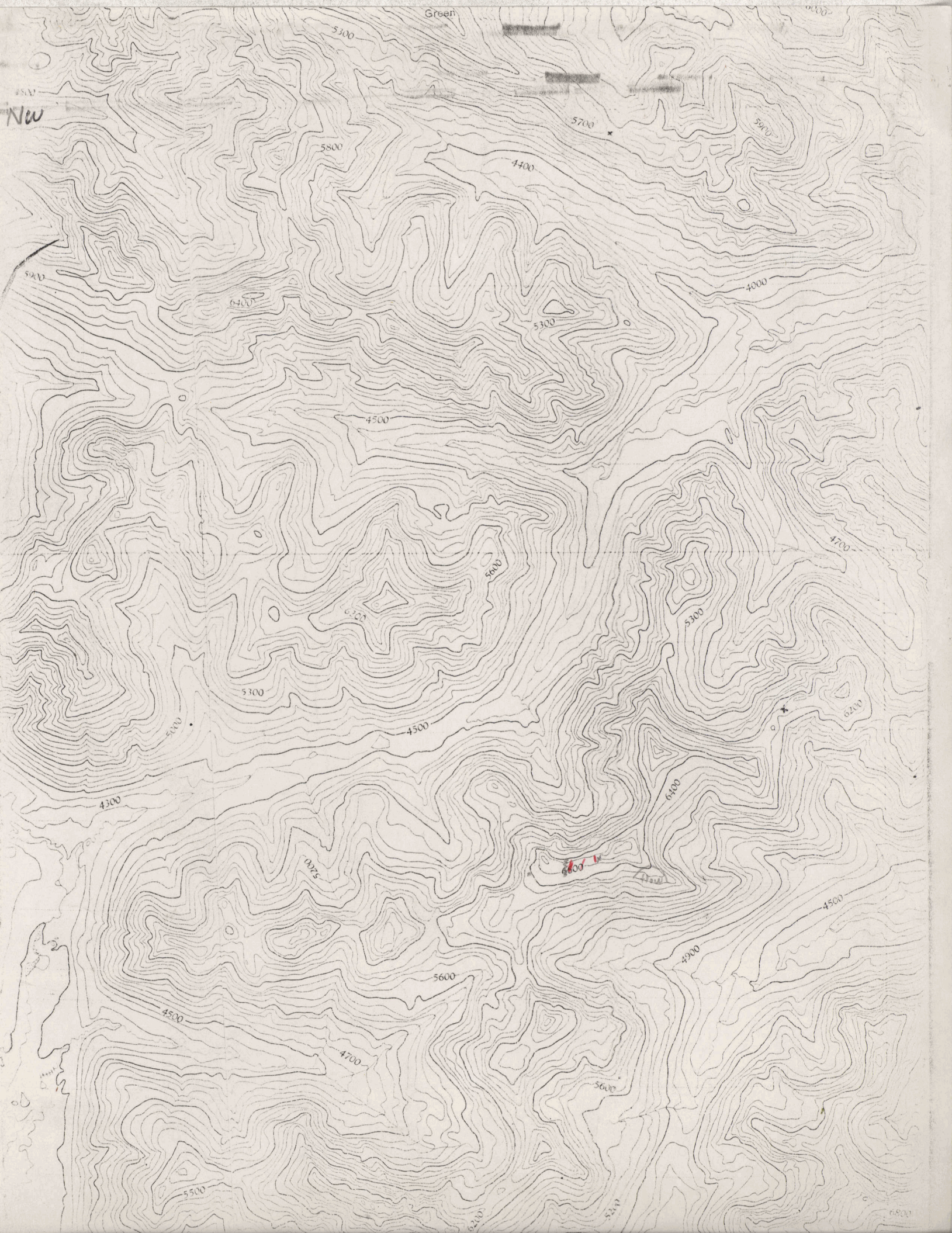
Grouping Certificate - CYR 2,4,6,8,18,20,22,24	5.00
- CYR 1,3,5,7,17,19,21,23,33-40	5.00
- CYR 9-16	5.00
Certificate of Work - CYR 2,4,6,8 (5 years)	100.00
- CYR 18,20,22,24 (4 years)	80.00
- CYR 1,3,5,7 (5 years)	100.00
- CYR 17,19,21,23,33-40 (4 years)	240.00
- CYR 9-16 (4 years)	160.00
<b>TOTAL</b>	<b>\$1,085.00</b>

Yours truly,

C. M. Lalonde

CML:ng  
Encs.

081156



Green

NW

5700

5300

5800

4400

5400

5900

6400

4000

5300

4500

4700

5000

6300

5500

5300

6200

4500

4300

6400

6000

6600

4500

5600

4900

4500

4700

5600

5500

6800

1A

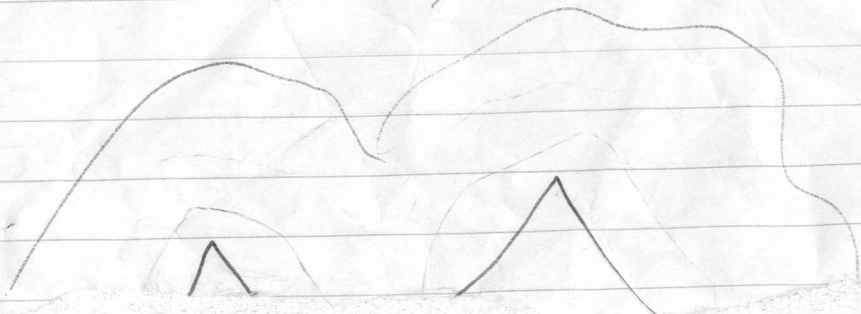


- good colloform Sp

- possible grading size

- placer lenses?

entirely Py



4W

3W

2W

1W

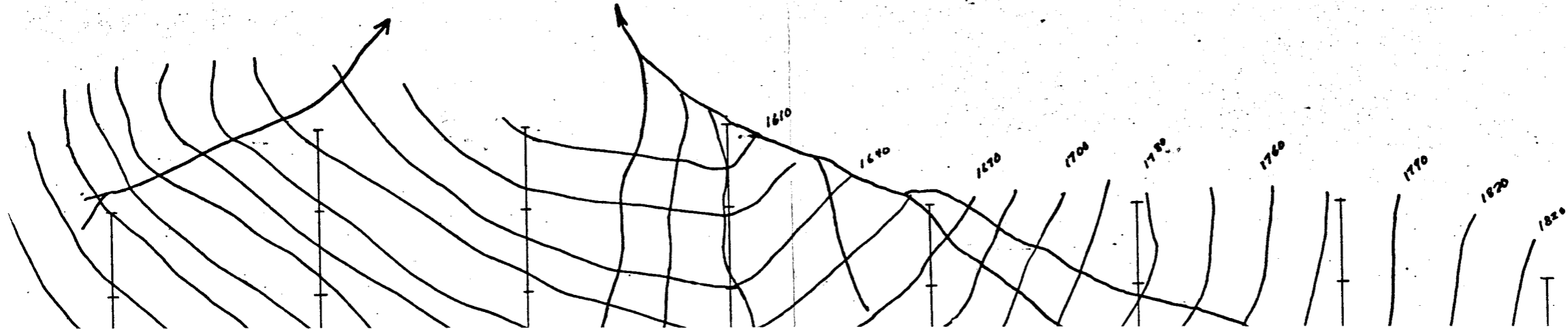
0

1E

2E

3E

240 N













021150

DD65

ND DRILL HOLE RECORD

64 m @ 292° AZ

FROM #1 POSTS "JOE 5+6"

DIP TEST		
FOOTAGE	ANGLE	
	RECORDING	CORRECTED
STICK-UP		0.8 m
COLLAR		-4.0°
76 m	-39.5°	-31.5°
114 m	-40°	-32°
197 m	-26.7°	-20.5°

LEVEL	
LOCATION	PELLY
ELEVATION	1884 m
LATITUDE	---
DEPARTURE	---

HORIZONTAL COMPONENT	213 m (FROM COLLAR)
VERTICAL COMPONENT	1765 m
BEARING	022°
LENGTH	250.3 m
DATE FINISHED	JUNE 22 - JULY 1, 1978

HOLE No.	JOE 78-2
SHEET No.	1 OF 7
LOGGED BY	JN
PURPOSE	
TOT. RECOVERY	

LITHOLOGIC LOG	METERS FOOTAGE		EST. SULPHIDE	ROCK TYPE	DESCRIPTION	ASSAYS										RECOVERY					
	FROM	TO				SAMPLE No.	FROM	TO									FROM	TO	RUN	REC SHORT	
	0	7.3			OVERBURDEN													7.3	8.7	0.9	0.5
	7.3	23.5	TR	SHALE/SILTSTONE	- GREY TO BLACK, GRAPHITIC, BADLY BROKEN DUE TO FAULTING. -7.3-10.0: GOUGE (GRAPH) -10.0-16.2: FINE-MED GRND SILTST. LITHIC GRNS TO 2 mm -13.6: BEDDING - 030° -TR PY WITHIN RANDOM GRNS (< 0.5%) -14.6: BEDDING - ~ 022° -LOCAL QTZ STRING (1-3mm), MOSTLY IN GOUGE -16.2-16.4: GRAPH SHALE, BADLY BRKN -16.4-19.1: GOUGE (GRAPH) -19.1-19.9: SILTST AS PREV. SLIGHTLY FINER-GRND -19.9-23.5: GOUGE (GRAPH)													9.5	1.3	0.3	
																		11.3	1.8	0.6	
																		11.9	0.6	0.4	
																		12.5	0.6	0.7	
																		14.0	1.5	0.9	
																		15.2	1.2	0.9	
																		16.2	1.0	0.9	
																		17.4	1.2	0.7	
																		19.5	2.1	0.7	
																		20.7	1.2	0.6	
																		22.5	1.3	0.6	
																		23.5	1.5	0.9	
																		24.4	0.9	1.0	
																		25.2	0.9	0.9	
																		26.7	1.4	0.8	
	23.5	26.8	1-2%	TUFF	- THIN-LAM, MOD TO WELL SHRD. SHRD PROP. //A BEDDING. GREY-LT. COLORED INT' BANDS, MOSTLY LT-GREY & WHITE CLASTS. SOME THIN PY CLASTS (NODULES?). CLASTS ARE FLANG'D. -ROCK IS BADLY BROKEN, WEAKLY SER. -22.9: FOL/BED : 055° -26.5: CAL STRI TO 2 mm													27.7	1.0	0.9	
																		30.5	2.6	2.3	
																		32.6	2.1	2.7	
																		33.5	0.9	0.7	
																		25.7	2.2	2.0	
	26.8	27.7		GOUGE																	
	27.7	30.5	2-5%	LAPILLI	TUFF (UNIT 3-A) - WELL SHRD, SERICITX. VARICLASTIC, LARGEST (3-4mm) ARE APHAN & LT-COLORED VOLC. BALANCE CONSISTS OF BLACK ARAIL (10-15%), ASSTD VOLC & PY CLASTS. MINOR DISC PY, MOSTLY IN FORM OF NO ASSOC. WITH CLASTS. NO STRINGERS. -PY CLASTS MAY EXPLAIN HEMATITIC CLASTS OBS'D IN D/C. -WHISPS OF SER. SCAT'D THROUGHOUT																



# ND DRILL HOLE RECORD

DIP TEST	FOOTAGE		ANGLE		LEVEL	HORIZONTAL COMPONENT	HOLE No. JOE 78-2
		RECORDING	CORRECTED		LOCATION	VERTICAL COMPONENT	SHEET No. 3 OF 7
					ELEVATION	BEARING	LOGGED BY JN
					LATITUDE	LENGTH	PURPOSE
					DEPARTURE	DATE FINISHED	TOT. RECOVERY

GRAPHIC LOG	METERS FOOTAGE		EST. SULPHIDE	ROCK TYPE	DESCRIPTION	ASSAYS										RECOVERY					
	FROM	TO				SAMPLE No.	FROM	TO								FROM	TO	RUN	REC-SHORT		
					-51.8: BRKN CORE													79.0	81.1	3.1	3.1
					-52.8: 5cm zone of pale ser alt.													84.5	86.6	2.1	2.0
					-55.5-57.2: BLACK GRAN & SER TUFF; RARE BRKN CORE, MINOR ZONE OF LAPILLI													88.7	91.2	2.5	2.7
					-57.2: BEDDING: 060°													94.5	97.6	3.1	3.1
					-58.0-58.5: FINE-GRND X-TAL TUFF													100.6	103.7	3.1	3.2
					-58.6: PY CLAST 3cm													106.9	109.5	2.6	2.6
					-59.5: 15cm ARGIL BED WITH ARGIL CLASTS TO 2cm; FINE DKS PY TO ~0.5% BEDDING: 060°, TOPS DOWNWARDS?													111.6	114.6	3.0	2.8
	59.7	68.6	TR	RHYOLITE?	FLOW (UNIT 3?): MASS. FINE-GRND, LT-GRY TO GRN. HIGHY SER. WELL FRAC'D & VEINED WITH SER & A DARK MIN. POS CHL OR PYRO. FRAC. MAY BE AUTO-Δ																
					-62.1: QTZ VEIN @ 020°																
					-66.4-68.6: BECOMES MORE A-TATED DOWN HOLE (FLOW TOP?) INCAPS SOME ARGIL FRAGS.																
	68.6	71.2	0.5%	LAPILLI	TUFF - SAME AS PREV. GRAD CTCT APPROX PY & ARGIL CLASTS, GREY MATRIX, MOD-WEL SHR'D. MINOR SER; 0.5% PY																
					-71.2: FOL/CTCT: 070°																
	71.2	84.3	TR-OS	RHYOLITE?	(UNIT 3?): FINE-MED GRND; GREY-GREEN, MOD. SHR'D, SER.																
					-72.1-72.3: BRKN CORE																
					-72.7-74.9: SLIGHTLY PPTIC; MORE A-TED DOWN HOLE																
					-74.9-75.6: LAP. TUFF ~ 2% DISS PY																
					-75.3: FOL ~ 052°																
					-75.6-75.7: GOUGE																
					-77.2-77.5: LAP. TUFF; BRKN CORE																
					-77.8-78.4: BRKN CORE																









252m @ 027.5° AZ FROM #2 POSTS "JOE 37F, 38F"

021156

2265

ND DRILL HOLE RECORD

~~242m @ 213° AZ~~  
FROM #1 POSTS "JOE 9, 10"

DIP TEST		
METERS FOOTAGE	ANGLE	
	RECORDING	CORRECTED
STICK-UP COLLAR 74.1m	-57.5°	0.4° -60° -49°

LEVEL	
LOCATION	PELLY
ELEVATION	(4840') 1475m
LATITUDE	539.2 m S
DEPARTURE	L5E + 21.7m

HORIZONTAL COMPONENT	484 500714
VERTICAL COMPONENT	1401 m
BEARING	042°
LENGTH	93.6 m
DATE FINISHED	JULY 2-3, 1978

HOLE NO.	JOE 78-3
SHEET NO.	1 OF 3
LOGGED BY	JN
PURPOSE	
TOT. RECOVERY	

LITHOLOGIC LOG	METERS FOOTAGE		EST. SULPHIDE	ROCK TYPE	DESCRIPTION	ASSAYS										RECOVERY					
	FROM	TO				SAMPLE No.	FROM	TO									FROM	TO	RUN	REC SHORT	
	0	4.0			OVERBURDEN:													4.0	5.2	1.2	1.2
	4.0	11.8	TR	SILICEOUS DOLOMITE:	FINE-GRAN, HARD TO KNIFE, EFFER'S WHEN POWDERED, RIDDLED WITH QTZ STRAIN 1-2mm APART.													5.9	0.7	0.1	0.1
					-7.8: TR. PY DISS. SOME THIN (<1cm) GRAB SEAMS													8.8	2.9	3.2	3.2
					- CORE IS GEN. BADLY BRKN													9.5	0.7	0.5	0.5
					- PALE YELLOW-ORANGE CAL. ASSOC WITH QTZ ALONG FRAC'S													12.5	3.0	1.0	1.0
					-8.4: QTZ STRAIN: 0.55°													14.3	1.8	0.2	0.2
					-11.7-11.8: LT GREY SLTST / TOFF, SOFT, DOES NOT FIZZ TO HCl - BLARS PY STRIN													16.5	2.2	1.5	1.5
	11.8	14.7	1%	SHALE:	BLK, GRAB, HIGHLY SHIP, VERY POOR RECOVERY													17.4	0.9	0.8	0.8
					- VEINED WITH CAL & PY STRIN UP TO 2mm.													18.0	0.6	0.4	0.4
					- 12.4: PY STRING: ≈ 0.65°													19.8	1.8	1.0	1.0
					- 12.8: GORGE													20.4	0.6	0.1	0.1
	14.7	24.7	3%	SILICEOUS DOLOMITE:														22.2	1.9	1.8	1.8
					- 14.7-15.4: MED GRAN, HARD, GREY, EFFER WHEN POWDERED.													24.7	2.4	0.7	0.7
					- 15.4-22.5: FINE-GRAN, LT-GREY, HARD, EFFER WEAKLY WHEN POWD'D, SOME CAL STRIN.													25.9	1.2	0.2	0.2
					- 15.4-16.5: PY STRIN RANDOMLY (UP TO 5%)													27.1	1.2	0.4	0.4
					- 17.0-17.4: BRKN CORE													27.6	0.5	0.2	0.2
					- 17.7-18.0: " " PY STRIN TO 15%													29.3	1.7	0.4	0.4
					- 22.5-24.7: PALE GREEN-GREY CAST, HAS ROUNDED GREY MIN. (SOFT) TO 5mm. POSS VOLCANIC?													29.6	0.3	0.1	0.1
																		29.9	0.2	0.2	0.2
																		30.6	0.7	0.7	0.7
																		32.5	1.9	0.1	0.1
																		35.4	2.9	0.1	0.1
																		38.4	3.0	0.2	0.2
																		41.8	3.4	0.2	0.2
																		44.8	3.0	0.6	0.6
																		46.3	1.5	0.8	0.8
																		47.9	1.6	0.9	0.9
																		49.1	1.2	0.2	0.2







# ND DRILL HOLE RECORD

DIP TEST			LEVEL		HORIZONTAL COMPONENT		HOLE No. <b>CYR 78-4</b>	
			ANGLE		VERTICAL COMPONENT		SHEET No. <b>2 OF 4</b>	
FOOTAGE	RECORDING	CORRECTED	LOCATION		BEARING		LOGGED BY <b>JN</b>	
			ELEVATION		LENGTH		PURPOSE	
			LATITUDE		DATE FINISHED		TOT. RECOVERY	
			DEPARTURE					

GRAPHIC LOG	FOOTAGE		EST. SULPHIDE	ROCK TYPE	DESCRIPTION	ASSAYS										RECOVERY					
	FROM	TO				SAMPLE No.	FROM	TO								FROM	TO	RUN	REC SHORT		
	82.8	233.6	1%?		<b>CARBONACEOUS + FOSSILIFEROUS LIMESTONE:</b>													66.8	69.1	2.3	2.7
					- CONSISTS PRIMARILY OF ALT' BANDS OF LT-GREY CALC, FOSS' LST AND DK GREY CARBON. & CAL LST. ABUNDANT CRINOID STEMS DOWN. FOSSIL TYPE.														72.1	3.0	3.1
					- LAMINAE // & SUB-// TO CORE AXIS. PY STRING TEND TO FOLLOW FOL., UP TO 3% LOC.														74.5	2.4	2.3
					- 85.5-86.7: ZONE OF GRAPH SLATE														76.5	2.0	2.3
					- 88.7-88.9: BRKN CORE														79.7	2.2	3.2
					- 90.9-91.2: QTZ STRIN @ 040°														82.5	2.8	2.8
					- 97.3-97.6: VERY THIN GASH VEINS FILLED WITH POSS HONEY SPHAL. (1-2% Zn)														85.5	3.0	2.2
					- 102.8: POSS BED: 010°														87.5	2.0	2.1
					- THIN PY STRIN ALONG FOL														89.3	1.8	1.8
					- 102.2-104.2: ZONE OF CAL FRACTS IN VARIOUS DIP'S														92.4	2.1	2.1
					- 114.9-115.7: BRKN CORE														95.6	2.2	3.2
					- 118.2: CAL STRNG ≈ 5cm THICK														98.5	2.9	2.0
					- RANDOM CAL STRIN ALONG FRACT AT 010°														101.4	2.9	2.0
					- 118.3-164.8: SDS, SAME AS PREV, BED/ FOL SUB-// TO CORE.														104.6	2.7	3.2
					- 164.8: FOL. 010°														107.6	3.0	2.1
					- 166.1: BED: 015°														110.7	3.1	2.0
					- 168.6-169.4: BRKN CORE														113.7	3.0	2.2
					- 178.8: POSS BED: 025°														116.8	3.1	2.0
					- 189.5: " " : 030°, BANDS OF ALT DK GREY CARB & LT GREY CALC PHASE (± FOSSILS)														119.8	2.0	2.2
					- 194.7: POSS BED: 040°														122.9	3.1	2.1
					- 196.9: FOSSIL ≈ 4cm LONG, CRESCENT-SHAPED, CEPHALOPOD?														125.9	3.0	2.9
					- 198.6: BED: ≈ 037°														129.0	2.1	2.1
																			132.0	3.0	2.1
																			135.1	2.1	2.1
																			138.1	2.0	3.1
																			139.2	1.1	1.1
																			142.4	3.2	2.2
																			145.4	3.0	3.1
																			148.3	2.9	3.0
																			151.4	3.1	3.2
																			152.5	2.1	2.2
																			156.7	2.2	3.2
																			159.8	2.1	3.2
																			162.8	3.0	3.1







Feb- 27 179

ASA 800

Frame		Remarks	Light	Speed	Ocular
1	114cI	Green hbd → stilp	plane	1/2	Low
2	"	Green bio	"	1/4	"
3	114cII	bio & radiating stilp	"	"	"
4	"	clinopx, Ep-Mt-Stilp symplectite	"	"	"
5	"	cpX, bio, stilp	"	"	"
6	M-61912	vein, antiperthite	X		
7	M-2-2142	tuffaceous dolomite	plane		
8	2A-1998	relict px phenocryst	X nic		
9	2-2093	carb-barite amygdule	X		
10	"	arg clast	plane		
11	"	" "	X		
12	1-230A	trach + carb clast in tuff	plane		
13	"	" "	X		
14	1-228A	tuffaceous siltstone	X		
15	"	"	plane		
16	+074 114b	perth phenox or phenocryst?	X		
17	114b I	trach + carb-tem amygdules	X		
18	"	"	plane		
19	"	close up of <del>ls</del> matrix	X		med
20	J06-3 D10R	braid perthite	X		med
21	J8	barite	X		low
22	J-12	andesite texture	plane		"
23	"	"	X		"
24	MM-1	micro folds	plane		low
25	"	"	X		"





(polished then)

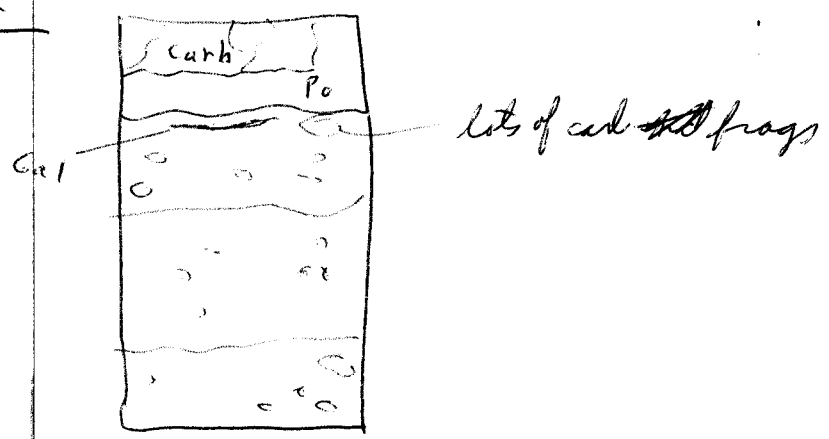
- beautiful layering  
- detrital Py

- from aug 30E #2  
sample of lower zone;

- Po, Py, Sp. carb

- I think the detrital aspect indicates that the material is ~~topo~~ redeposited from a prob. larger source nearby

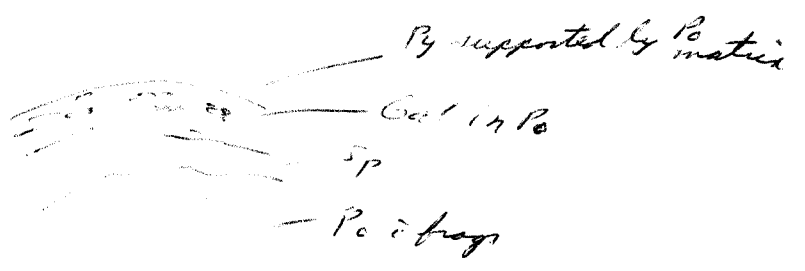
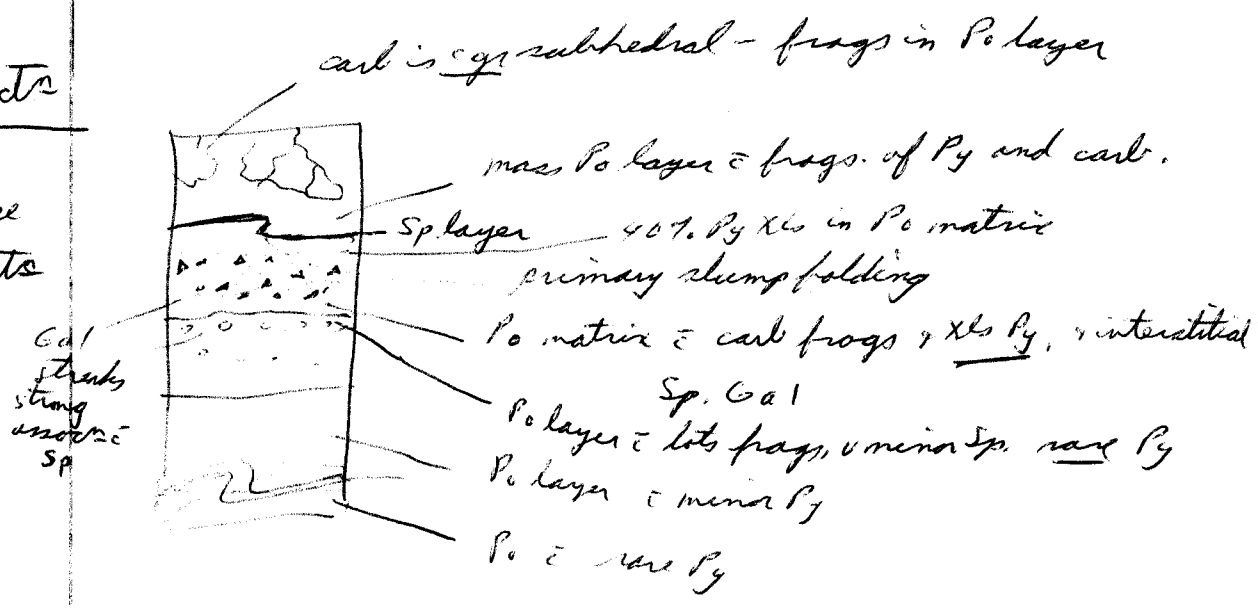
Slab



Sects

NE

- maybe make stylized sects profile

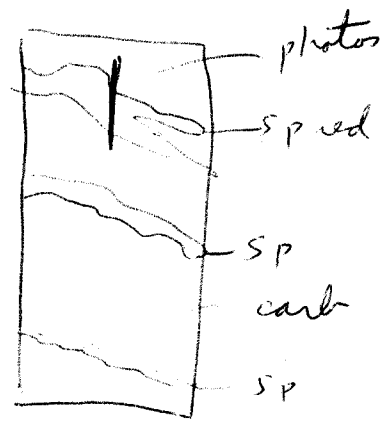


Polished thin  
 (1 complete  
 1 partial)

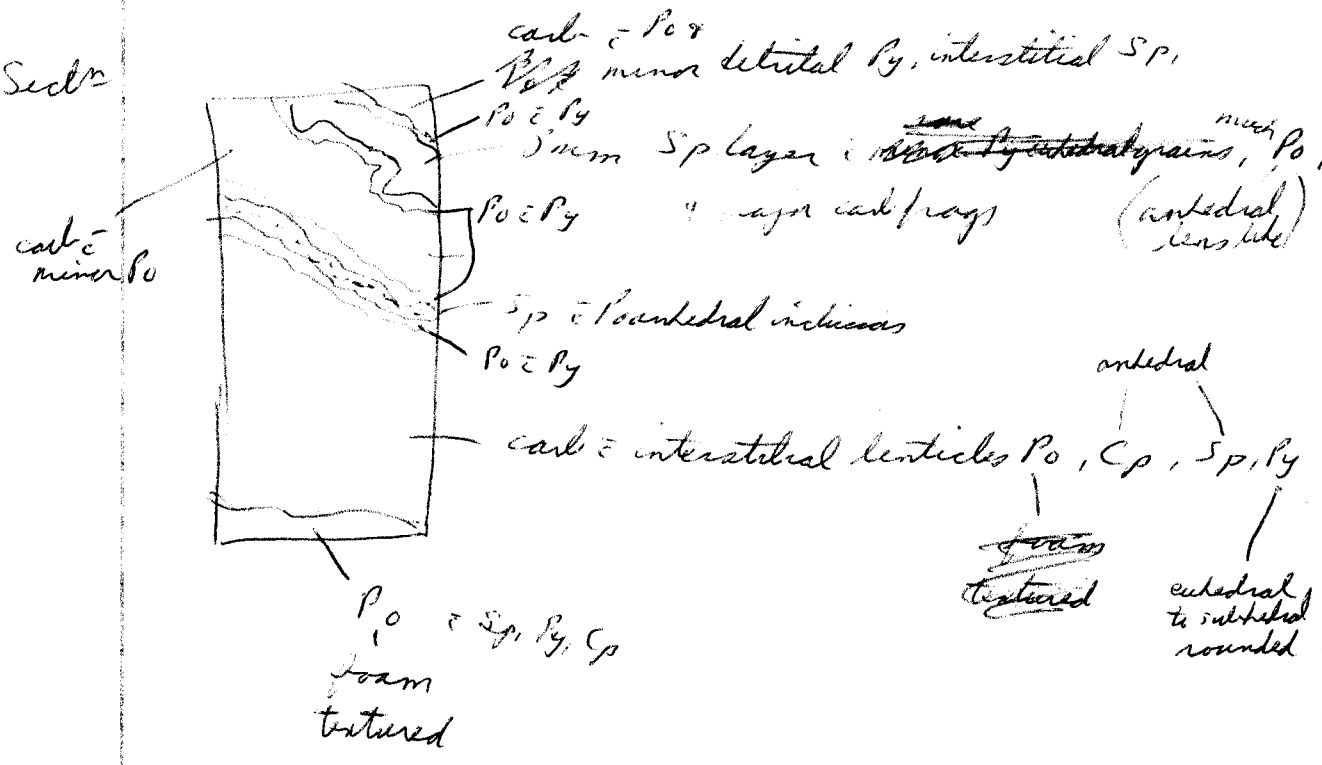
Po, Py, Sp, carb  
 - rel thick Sp layers

- from JOE upper zone; amoeboid grey carb common

Slab



Sect<sup>n</sup>



Foliated then

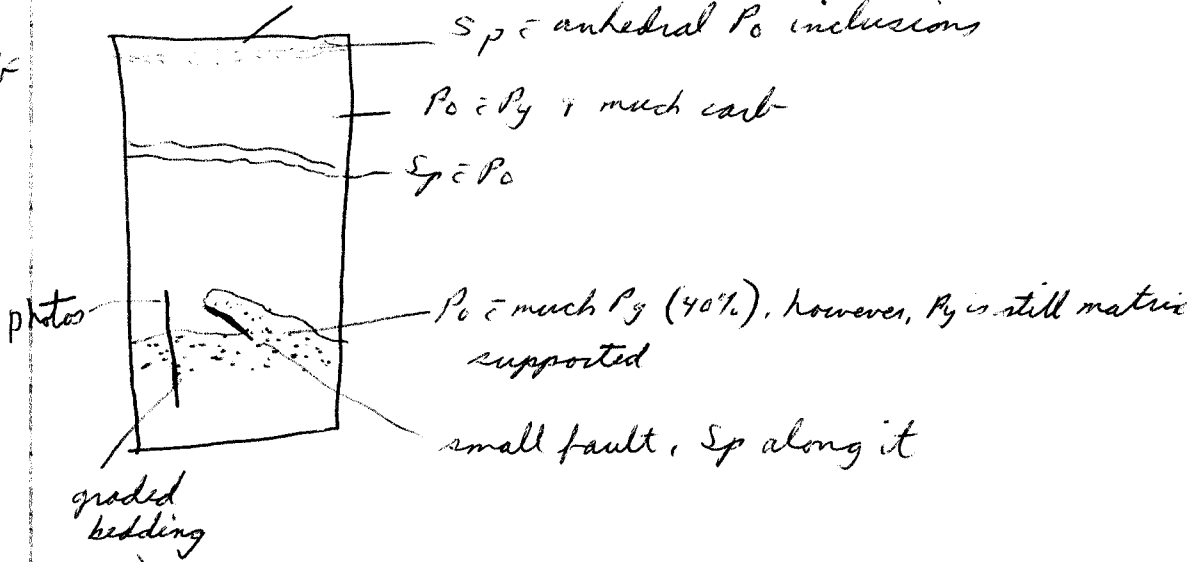
10, Py, Sp, carb  
- nice alt-layering

- from upper zone, amoeboid grey carb common,  
same area as J-5

from textured Po  $\bar{\epsilon}$  euhedral inclusions Py

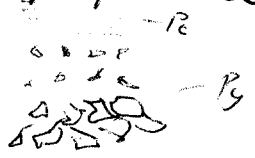
Sp  $\bar{\epsilon}$  anhedral Po inclusions

Sect



Sect

photograph fracture



3 types layering here

- 1) Sp Po  $\bar{\epsilon}$  minor Py - lots carb frags
- 2) Sp  $\bar{\epsilon}$  minor Po
- 3) Po  $\bar{\epsilon}$  major detrital Py

collected then sed

- looks like frags Py & carb in mass Po

- red Sp layers

- Upper zone; mass Po is grey carb.



Sp

Po (foam tex) is lots carb inclusions

of minor Py, rare interstitial antedredal Sp, minor Sp antedredal

detrital Py layer  
euhedral

mainly

1) Po is carb frags

2) (minor) Sp layers

brown tuff + some green alt grains

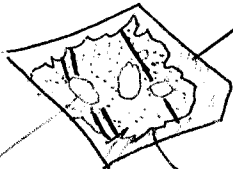
- green alt areas

- looks like redict sphen

eg

2 mm

+ pale green flaky alter. - high brief-like  
mass.



brown orange sphen-like

- basaltic hdd?

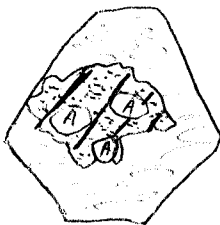
E-SE corner

inclusions look like apatite

- tuff consists ~50-60% of xl clasts supported in dusty + gr ash-like ~~and~~ dusty looking matrix = >1% opaques

- almost all xls alt. to sericite + opaques

- few unalt. phenoclasts of felds.,



1 mm

- NB these green alt phenocrysts are very distinctive +

their inclusions of apatite

may be very useful for correlation

- West

- definitely look at more of this slide

- gr. deinite on JOE, SE end

- hypidiomorphic granular
  - perthite, sericite, carbonate, quartz, chlorite  
opaque
  - veinlets qtz, carb, chlorite
- ~95% rock is mosaic of perthite = + gr  
interstitial ~~ser~~ patchy sericite &  
moderate patchy sericite altern<sup>n</sup> perthite
  - 25cm → 2cm perthite, few C-twins
  - chlorite, rare opaque are shreddy shaped

## PERTHITE

J V Smith

Four processes  
exsol<sup>n</sup>

replacement

filling of voids

simultaneous growth

Compos	Perthite	Antiperthite	Mesoperthite
--------	----------	--------------	--------------

Size	macro bands > 0.05 mm	micro < 0.05 mm	crypto not optically vis.
------	--------------------------	--------------------	------------------------------

(1928)	(1962, 63)
Anderson and Laves, Soldatos	

- string film vein patch - interlocking - plate perthite

String allite.1 - 1.0 mm long, rounded elliptic or lenticular  
cross section 10 - 1  $\mu$ m or less acrossFilm allite

- regular thin tabular bodies

Vein albite

- usually as irregular, ribbon bands
- may grade into patches

Patch perthite - creates islands  
- very variable

Interlocking perthite

Plate albite

Dike-like

Flame (flame) perthite - kind of patch perthite in which  
parallel films merge into a feathery texture

Shadow (shadow) perthite

Commonly, <sup>K-poor</sup> microperthitic core  $\rightarrow$  <sup>K-rich</sup> macroperthitic rim  
cryptoperthitic core  $\rightarrow$  microperthitic rim

Shadow perthite

- under x-micros, the microperthite lamellae  
have a variable distribution resulting in a coarse wool-like  
pattern of intersecting lensoid regions (p. 423)

Hair perthite (rods) - thin short rods

Photos

KOD R-1

4, 5

rosette devitif

1/2, R~3

#2 lens

M1-19

6, 7, 8

trach tex

1, 1, 2 1/2

#1 L

2A-2108

9

rosette devit

2 1/2,

#1

4-1925

10, 11

carb, hem alt

1, 2 1/2

1

4-1925

12

trach + rosette

3

1

4-1975

13

perth phenox = carb alt

3

1

4A 2093

14

" "

3

"

"

15

carb pseudomorphic <sup>wrap</sup> around "

"

"

"

16

perth = carb alter

"

"

"

17

lge perth phenox

"

"

"

18

" "

"

"

"

19

perth phenox

3

1

4-2172

20, 21

dest clasts intrach

2, 3 1/2

1

" "

## B+W PLUS X

		<u>sec</u>	<u>lens</u>	
3,	rosette devit	2	2	M-119
4	"	"	"	"
5	trach tex	2	1	2A-2108
6	"	"	"	"
7	"	"	"	"
8	rosette devit	3	1	4-1925
9	"	2	"	"
10	carb. hem alt	2	"	"
11	"	"	"	"
12	trach + rosette tex	2 1/2	"	4-1975
13	Perth phenox + carb alt	"	"	4A-2093
14	"	"	"	"
15	"	"	"	"
16	carb pseudomorph	"	"	"
17	perth phenox + carb	"	"	"
18	perth phenox	3	"	4-2172
19	chert clast	"	"	"
20	phenox + chert clast	"	"	"
21	chert clasts	"	"	"

M-1

P-1

### Thin Sections

MM-1

Meta-andesite

MM-2

" "

-3

Barite zone

4

Ser-chlor-Py

5

" " "

PT-1

Pterid folsic bx

PT-2

" bx

W-1

Weincke feldspathic bx

I-1, 1'

Phyl bx I goe

I-2, 2'

folsic bx

I-3

flowbanded rhyolite ?

~~I-4~~

PN-1

Prueckles diorite

2

" chloritic schist

3

" chloritized diorite

G-1

Cremlin alt diorite

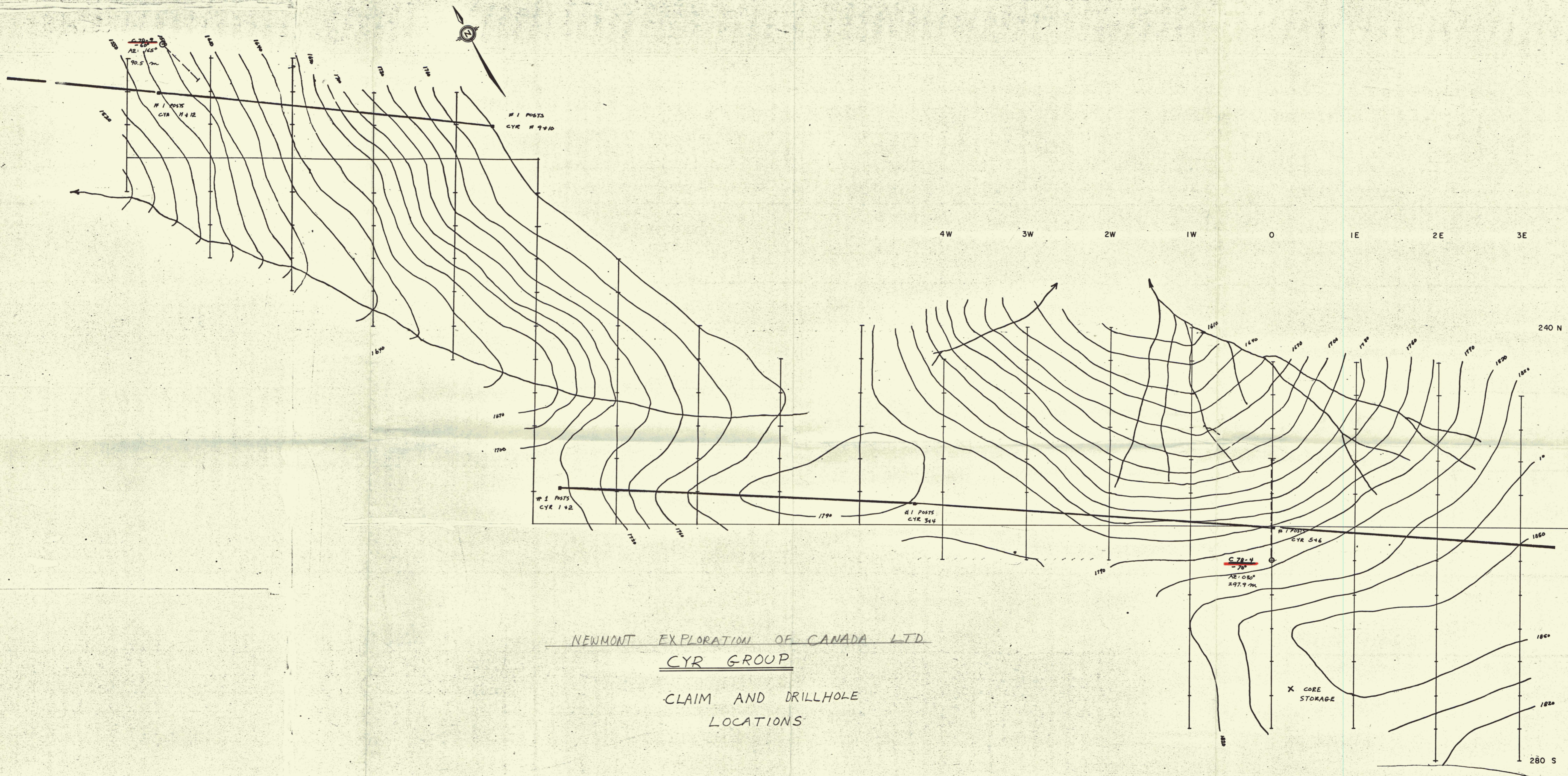
-2

" chloritoid schist

4

rhyolite ?



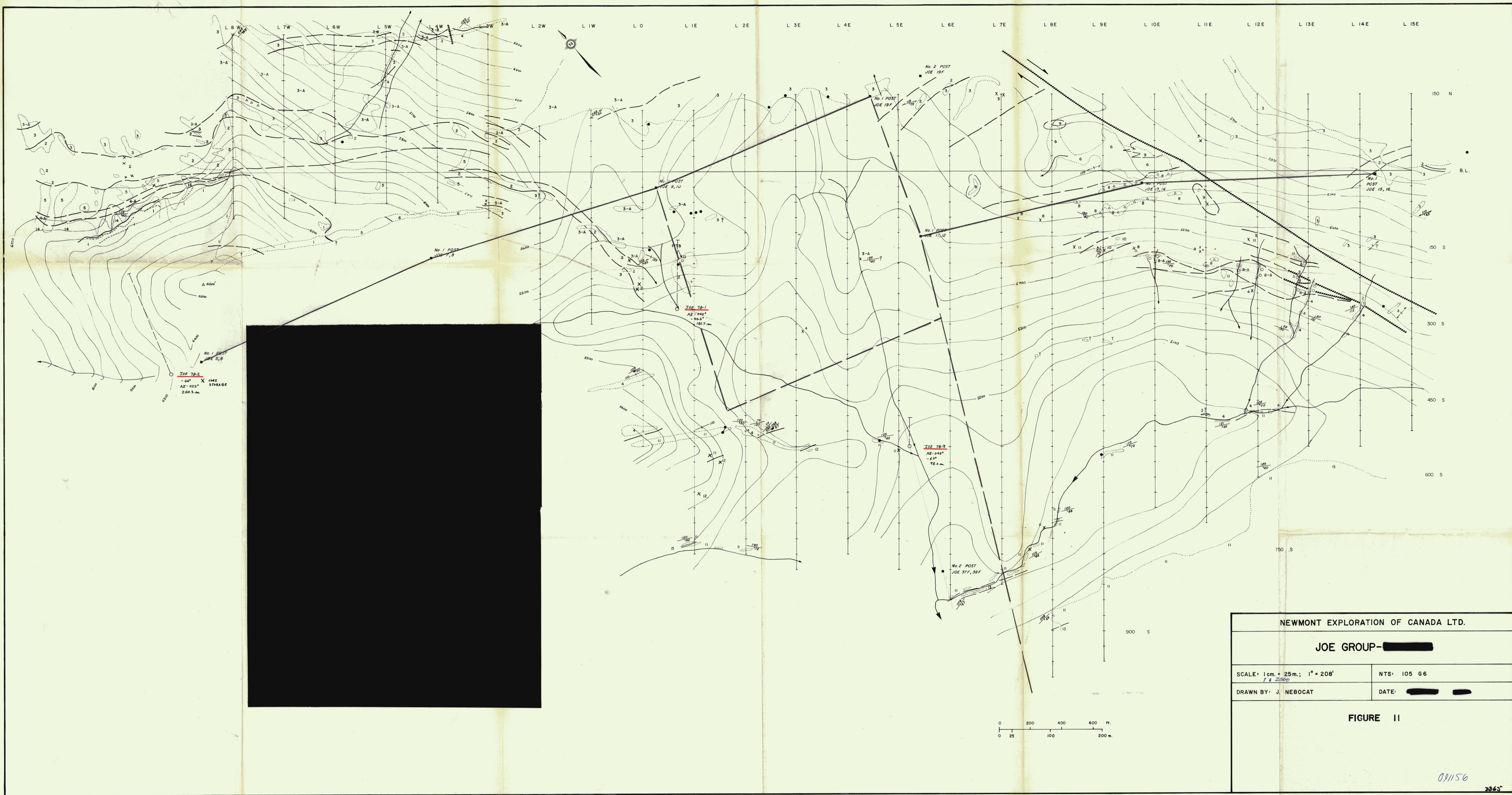


NEWMONT EXPLORATION OF CANADA LTD  
CYR GROUP

CLAIM AND DRILLHOLE  
 LOCATIONS

SCALE: 1:2500  
 CONTOUR INTERVAL: 15 meters

09/156



NEWMONT EXPLORATION OF CANADA LTD.	
JOE GROUP- [REDACTED]	
SCALE: 1 cm. = 25 m.; 1" = 200'	NTS: 105 66
DRAWN BY: J. NEBOCAT	DATE: [REDACTED]
FIGURE II	

091156  
2063

134°00'  
62°00'

130°00'  
62°00'

105 F

105 G

SAMPLE LOCATION MAP - MISSISSIPPIAN  
FELSIC VOLCANICS

