

MAP No.

105 F 7

ASSESSMENT REPORT
N. M. E. A. P.
CONFIDENTIAL
OPEN FILE



TYPE OF
WORK:

GEOCHEMISTRY
GEOPHYSICS


091136

REPORT FILED UNDER	CYPRUS ANVIL MINING CORP. LTD.	DOCUMENT NO.	001740
DATE PERFORMED	1974	DATE FILED:	1974
LOCATION - LAT. LONG.	AREA:		
CLAIM NO.	M.M. - 1-75		
	J.J. - 1-81		
VALUE \$			
WORK DONE BY	P.E. WALCOTT		
WORK DONE FOR	P.E. WOLCOTT AND ASSOC. LTD.		
REMARKS	<p>Included are statements of costs for geochemistry and geophysics, along with the corresponding maps.</p> <p>Samples were tested for Cu, Pb and Zn. Geophysics consisted of ground magnetometer survey.</p>		

AFFIDAVIT OF EXPENDITURE

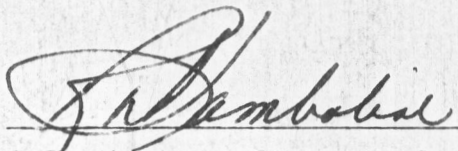
I hereby certify that the following monies were expended on the MM and JJ claim groups, C Claim Sheet, No. 105 F-7, as specified on the Applications for Certificate of Work forwarded to your office.

Diamond Drilling	\$36,299.65
Fuel Costs	4,680.71
Helicopter - Alouette II	18,685.00
Truck Rental	<u>1,024.72</u>
Total	\$60,690.08


 Stan K. Buziak, Agent for
 Cyprus Anvil Mining Corporation
 P. O. Box 1000
 Faro, Yukon Territory

091134

Sworn before me at Faro, Yukon Territory
 this 30 day of October, 1974



 A Commissioner for Oaths for Yukon Territory

LOCATION MM CLAIM
 SECTION
 CO-ORDINATES (N) - (E) -
 ELEVATION ~5800
 PROPERTY AMVIC

DIAMOND DRILL CORE LOG - SAMPLE RECORD

STARTED
 COMPLETED
 DIRECTION

Logged by W. JOHNSON 28 SEPT 1973

DIP - 90°
 HOLE No. 73MM.1 PAGE No. 1 of 3

FOOTAGE		DESCRIPTION	MINERALIZATION	SAMPLE No.	RECOVERY			ASSAYS						
FROM	TO				From	To	Footage	AU	AG	PB	ZN	CU	Fe	S
0	9	OVERBURDEN						0	10	TR	.03	.01		
9	39 1/2	BANDED WHITE MICA SCHIST AND ZONES LESS THAN 3" WIDE QUARTZITE, LEACHED & LIMONITE STAINED.	LIMONITE STAINING & FOYINOKS, MIN.		9	12	3.4							
					12	13 1/2	1.2							
					13 1/2	18	4.7							
			PARALLELS ROCK		18	22	4.4							
		@ 23' Bedding 50° From Axis of Core (DIP 40°)	FOLIATION (BEDDING)		22	23 1/2	1.6							
					23 1/2	29	6.7							
					29	33 1/2	4.6							
					33 1/2	39	5.6							
39 1/2	132	GRAY BANDED SCHIST & QUARTZITE AS ABOVE	MAINLY PYRROHOLITE WITH MINOR PYRITE		39	45	5.2							
			1/4 - 1/2" FLUORITE BLENDS			50	5.2							
						53	2.8							
		PRECIPITATED 68-73 Dip @ 46' 70° From Core Axis	IN VERY MINOR			58	5.2							
		" 80-82 66' 30"	AMOUNTS ARE RARE			63	5.1							
		" 123-126 83 1/2' 50"	SCATTERED THROUGH			68	5.3							
		93' 50"	CORE, SULFIDE MINIS			73	4.6							
		109' 40"	TO BEDDING, BUT AS			78	5.0							
		129' 25"	FRACT. FILLS IN QTZITE ZONES			83	4.9							

LOCATION MM CLAIMS
SECTION
CO-ORDINATES (N) - (E) -
ELEVATION
PROPERTY

DIAMOND DRILL CORE LOG - SAMPLE RECORD

STARTED
COMPLETED
DIP - 90 ° DIRECTION
HOLE No. 73M11 PAGE No. 2

Logged by U. Jansons

FOOTAGE		DESCRIPTION	MINERALIZATION	SAMPLE No.	ASSAYS												
FROM	TO				From	To	Footage	AU	AG	PB	ZN	CU	Fe	S			
			SULFIDE CONTENT VARIABLE														
			Pyrite and Sphalerite w/Aspy		80	92	5.1										
			Pyrite and Sphalerite		92	98	5.0										
			83-84 ~ 25% S.		98	103	4.9										
			85-86 ~ 25%		107	108	5.0										
			113-116 ~ 25%		108	113	4.7										
					113	118	5.1										
			125-128 ~ 25%		118	123	5.0										
			130-133 20-25%		123	128	5.0										
132	252	BLEACHED MUSCOVITE-CHLORITE QUARTZ SCHIST.	Py & Py in variable amounts. Average		128												
		STRONGLY 189-192 NOTICED w/ 1/4 INCH SULFIDE (Py, Sph)	1-5% with higher														
		RICH (w/Aspy) ZONES THAT HAVE SULFIDE RIM.	zones at														
		ARE INCLUDED IN BITTIC SECTION															
		198-208 STILL NOTICED, BUT	50° @ 220'														
		LESS DISTINCT, PROBABLY DUE TO	40° @ 225'														
		WATER SOAKED ROCK.	50° @ 253'														

LOCATION MM CLAIMS
 SECTION
 CO-ORDINATES (N) - (E) -
 ELEVATION ~5800
 PROPERTY MM

DIAMOND DRILL CORE LOG - SAMPLE RECORD

STARTED
 COMPLETED
 DIP° DIRECTION

Logged by U. Jansson

HOLE No. 73MM.1 PAGE No. 3

FOOTAGE		DESCRIPTION	MINERALIZATION	SAMPLE No.	ASSAYS												
FROM	TO				From	To	Footage	AU	AG	PB	ZN	CU	Fe	S			
252	400	PIOTITE - CHLORITE SCHIST	NOT READILY RECOGNIZED														
		MAGNETIC - DUE IN PART TO PYRRHOSITE	BUT MOST SECTIONS RESPOND														
		S ₂ - 30° @ 293 (S ₂ highly variable)	TO HARD MAGNET.														
		S ₂ INVERT @ 300 @ 398 S ₂ - 60° (Cid. S ₂)															
400	403	BLEACHED SERPITE-CHLORITE PHYLLITE	var. H ₂ O														
		WITH INCREASING QUARTZITIC SECTIONS															
		400 - S ₂ - 50° FROM AXIS OF CORE															
		400 - 403 REVEALING															

MM Claims 105-F-7
 1973+1974 DD-39
 091136

LOCATION MM CLAIMS
 SECTION
 CO-ORDINATES (N) -
 ELEVATION N
 PROPERTY ANVIC

DIAMOND DRILL CORE LOG - SAMPLE RECORD

GEOCHEM GRID

Logged by U.J. 17 Oct 1973

STARTED
 COMPLETED
 DIP - 90° DIRECTION
 HOLE No. 73 MM 2 PAGE No. 10

FOOTAGE		DESCRIPTION	MINERALIZATION	SAMPLE No.	ASSAYS												
FROM	TO				From	To	Footage	AU	AG	PB	ZN	CU	Fe	S			
0	19'	OVERBURDEN															
19	160	CHLORITE-MUSCOVITE SCHIST, LIGHT GRAY OXIDIZED TO 79' (i.e. LIMONITE) Fe @ 37' 55° FROM AXIS OF CORE	UNIFORMLY DISSEMINATED W-Pb - 5% Avg														
160	173	Chl. Musc. Schist with inter banded Q white quartzite. Qtzite fractions are brecciated Qtzite bands 1/2" to 1" thick, 10% in rock section! Fe @ 167 75° FROM AXIS OF CORE	Pb-Pb DISSEMINATED FOLIATION, AND IN CLOTS CEMENTING SOME BRECCIA FRAG. NO SULFIDES IN QUARTZ ITSELF.														
173	214	Chl. & Musc. Schist w/ notable increase in sulfides Fe @ 209 75° FROM AXIS OF CORE MIN. BANDING N VERTICAL	Pb & Pb Avg 10% RANGE 5-20% TO 10" SULFIDES														

LOCATION
 SECTION
 CO-ORDINATES (N) - (E) -
 ELEVATION
 PROPERTY

DIAMOND DRILL CORE LOG - SAMPLE RECORD

STARTED
 COMPLETED
 DIP - 9.0° DIRECTION
 HOLE No. 73M12 PAGE No. 253

Logged by W. Johnson

FOOTAGE		DESCRIPTION	MINERALIZATION	SAMPLE No.	ASSAYS												
FROM	TO				From	To	Footage	AU	AG	PB	ZN	CU	Fe	S			
211	219	LIGHT GRAY CHL. MUSC. SCHIST w/ QUARTZ SECTIONS. SPLIT IS BROWN & COARSE															
219	234	CHLORITE MUSC. SCHIST, MED GRAY w/ INCREASE IN CHLORITE, RANDOMLY SCATTERED OCCASIONAL UNKNOWN GARNETS	Pb-Py w 52 Ag														
	239	MINOR 25' FROM AXIS OF CORE															
244	250	CHL. SCHIST MED-DR GRAY. RANDOM OCCASIONAL GARNETS.	Py-Pb 50 Ag, minor ALONG FOLIATION														
	257	MUSCOVITE SCHIST w/ MINOR CHL. MINOR	Pb + Pd 1-2% Ag														
	259	MINOR															
267	272	GRANULITE (NOT 100% MUSCOVITE) SCHIST SPLIT 272-271 1/2 271-270	TRACE MIN. CORE IS SIGNIFY MAGNETIC														

LOCATION
 SECTION
 CO-ORDINATES (N) - (E) -
 ELEVATION
 PROPERTY

DIAMOND DRILL CORE LOG - SAMPLE RECORD

STARTED
 COMPLETED
 DIP $\sim 70^\circ$ DIRECTION
 HOLE No. 12442 PAGE No. 23

Logged by U. Jensen

FOOTAGE		DESCRIPTION	MINERALIZATION	SAMPLE No.	ASSAYS									
					FROM	TO	Footage	AU	AG	PB	ZN	CU	Fe	S
242	402	CHLORITE-MUSCOVITE SCHIST, w/ OCCASIONAL THIN (TO 1/2") STREPT BANDS, RANDOMLY DISTRIBUTED. QUATZ ZONES TEND TO BE PRECIPITATED (BROKEN). BANING AVA TO AXIS OF CORE P ₂ 85° FROM AXIS OF CORE BANDING TO AXIS OF CORE P ₂ " " " " " "	P ₂ -P ₃ IN CONTACT. MINERAL. TOTAL SUITE 5% AVG.											
327		P ₂ ~ 35° FROM AXIS OF CORE												
346		P ₀ ~ 30-85° " " " "												
400		BANDING AVA TO AXIS OF CORE												
		NOTE: MOST SECTIONS OF CORE ARE MADE UP OF TO SHALE CORES. NO CONTACT WITH NEED DIAGNOST. P ₀ APPEARS TO BE DIRECT FROM TOP WEATHERED SECTION - PROBABLY OXID TO FORM LIMONITE. Most P ₁ & P ₀ MIN. TO P ₃ MAJOR METAM. FACIATION.												

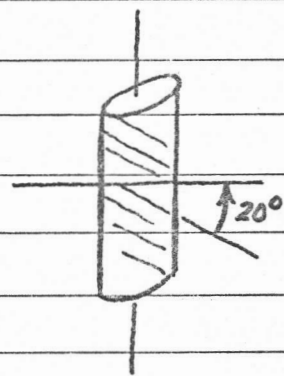
Diamond Drill Record

COLLAR:		HOLE SURVEY		
NORTH _____		FOOTAGE	AZIMUTH	DIP
EAST _____				-90°
ELEVATION 5700'		Hole not surveyed		
LOGGED BY D. S. Jennings				
DATE LOGGED Sept. 6, 1974				
MAP REFERENCE NO.		METHOD:		

COMPANY NAME Cyprus Anvil Mining Corporation
 PROPERTY NAME MM
 DRILLING CONTRACTOR Arctic Diamond Drilling=
 ASSAYER No core submitted for assay
 PURPOSE OF HOLE Test 1973 gravity anomaly

HOLE NO. DDH MM 74-1
 CLAIM NAME MM 7
 COMMENCED Sept. 2, 1974
 FINISHED Sept. 6, 1974
 PROJECT NO. 460

FROM	TO	RECOVY	DESCRIPTION	SAMPLE				ASSAYS					
				FROM	TO	WIDTH	NO.						
0	6		Overburden										
6	309		Slightly calcareous carbonaceous quartzite										
			S ₁ foln. 25° @ 17'										
			30° @ 72'										
			Fold Hinges 15° @ 117'										
			234' 25° @ 147'										
			257' 25° @ 187'										
			65° @ 217'										
			30° @ 256'										
			25° @ 279'										
309	309.5		Pyritic black graphitic marble band. S ₁ foliation 25° @ 309.5										
309.5	324		Slightly calcareous graphitic quartzite w/occasional marble bands 1/2" to 6" thick										
324	334		Well foliated (S ₂) calc-silicate schist w/marble bands up to 1". S ₂ @ 329' = 30°. Diss. po stringer @ 328.5'										
334	339		Graph. calc-silicate schist minor diss. po < 1%; S ₂ @ 20° @ 335'										
339	343		Calc-silicate schist; diss. po throughout up to ≈ 2-5% po. 4" sample taken @ 342'										
343	349		Silicated marble with minor po & po + py stringers and blebs w/up to 5% total sulfides over one 6" interval (344.5-345)										



Diamond Drill Record

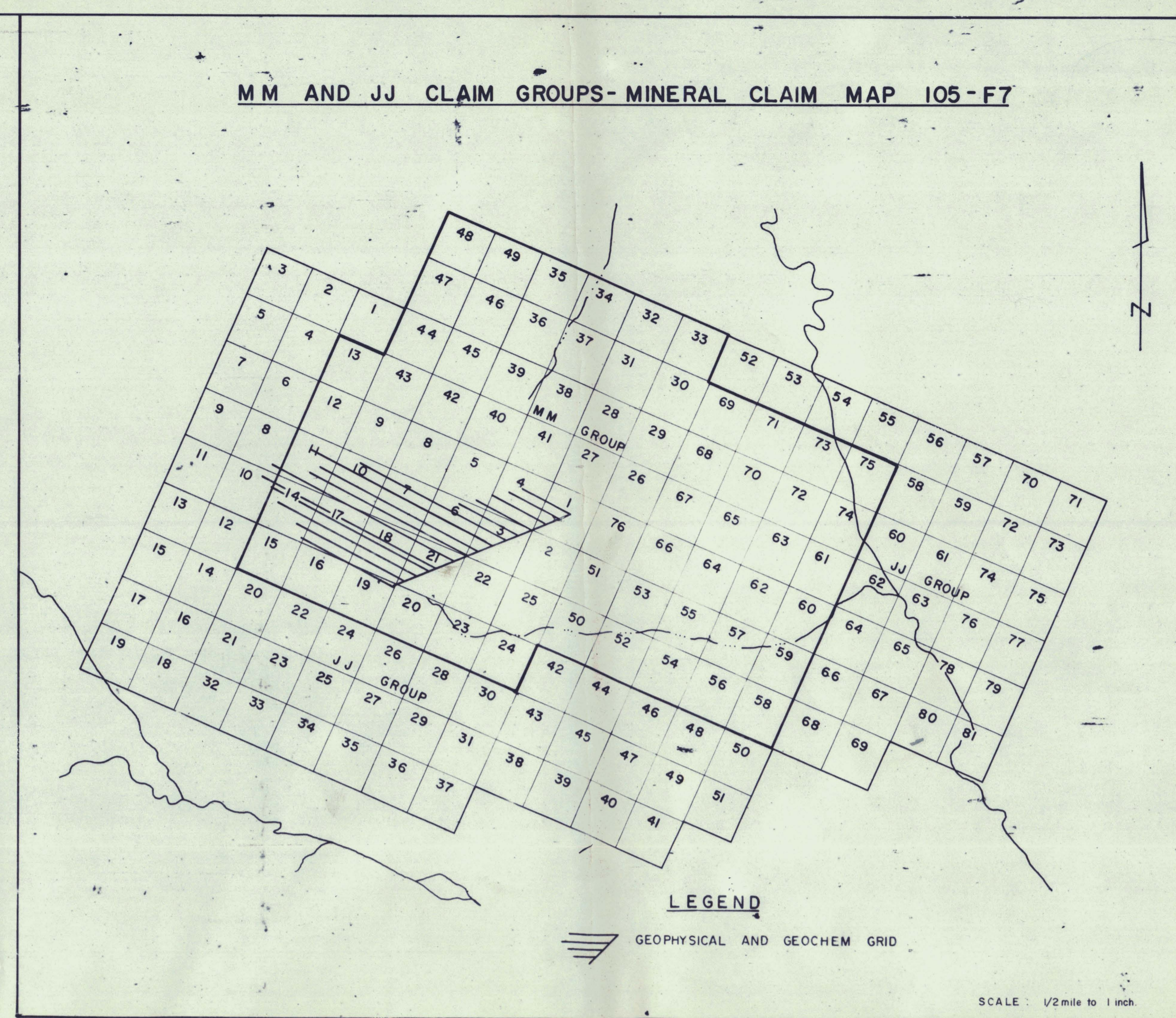
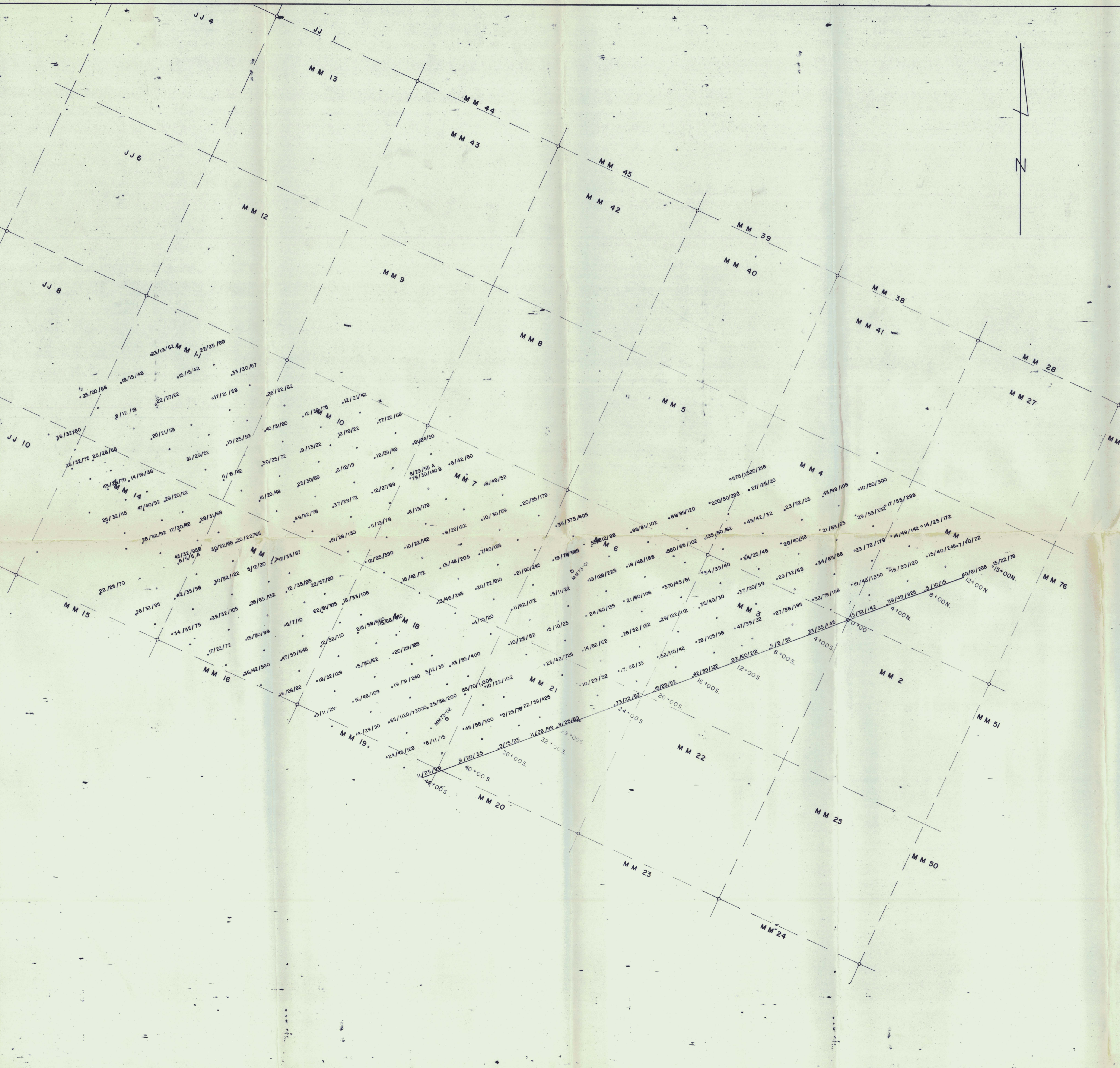
COLLAR:		HOLE SURVEY		
NORTH _____	FOOTAGE _____	AZIMUTH _____	DIP _____	
EAST _____		33°	-50°	
ELEVATION 6200'	Hole to be Surveyed _____			
LOGGED BY D. S. Jennings	in 1975 _____			
DATE LOGGED Oct. 10, 1974	METHOD: _____			
MAP REFERENCE NO. _____				

COMPANY NAME Cyprus Anvil Mining Corporation
 PROPERTY NAME MM
 DRILLING CONTRACTOR Arctic Diamond Drilling
 ASSAYER Cyprus Anvil Assay Lab.
 PURPOSE OF HOLE Test showings #1 & #2 in main MM cirque

HOLE NO.	<u>DDH MM 74-2</u>
CLAIM NAME	<u>MM 10</u>
COMMENCED	<u>Sept. 10, 1974</u>
FINISHED	<u>Oct. 10, 1974</u>
PROJECT NO.	<u>460</u>

FROM	TO	RECOVY	DESCRIPTION	SAMPLE				ASSAYS					
				FROM	TO	WIDTH	NO.						
0	2		Dol. marble; rubbly ≈ 20% recovery										
2	4		Med. gray dol. marble as above ≈ 80% recovery										
4	22		As above, no structural features										
22	57		Mottled med. & lt. gray dolomite										
57	80		Lt. gray, massive, unmottled featureless dolomite										
80	130		As 22-57 S ₁ ≈ S ₂ = 25° @ 87'										
130	156		As 57-80; ankerite xls. 147-150										
156	156.7		Dk. gray med. xlline dolomite										
156.7	159		Lt. gray mottled dol. S ₁ ≈ S ₂ = 40° @ 159'										
159	162		As 57-80										
162	167		Lt. gray mottled dol. at 156.7-159'										
167	170		Lt. gray featureless, unmottled dol.										
170	175		Off-white med. xlline calcitic marble. S ₁ = 70° @ 175'										
175	221		Med. gray, med. xlline calcitic marble w/unident xls. Sample taken @ 181.5'. 1" chartreuse talc filled shear @ 202'										
221	262		Med. gray finely xlline dol. w/occasional ankerite xls. S ₂ = 25° @ 232'										
262	292		Lt. gray mottled, fg. dol. No good foln.										
292	296		Med. & lt. gray dol. fossil "chowder." Prob. brachiopod fragmentals										
296	299		Med. gray mottled dol.										





LEGEND
 GEOPHYSICAL AND GEOCHEM GRID

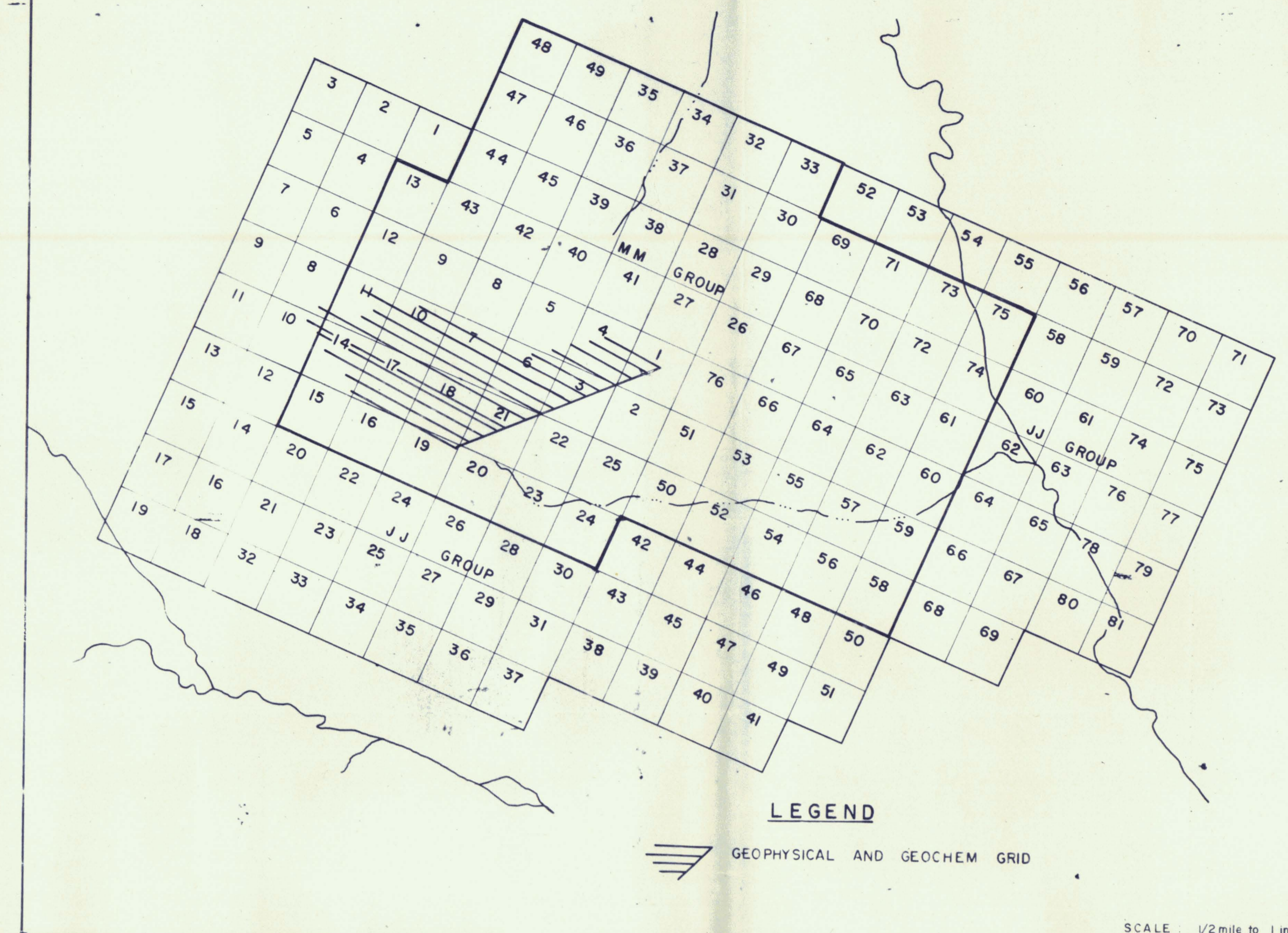
SCALE: 1/2 mile to 1 inch

LEGEND

*30/102/620 - Cu/Pb/Zn values in p.p.m.

ANVIL MINING CORP.	
FARO, Y.T.	
GEOCHEM SURVEY MM CLAIMS	
DATE: May 9th 1974	DWG. NO.
SCALE: 1" = 400'	DRAWN BY: SKL

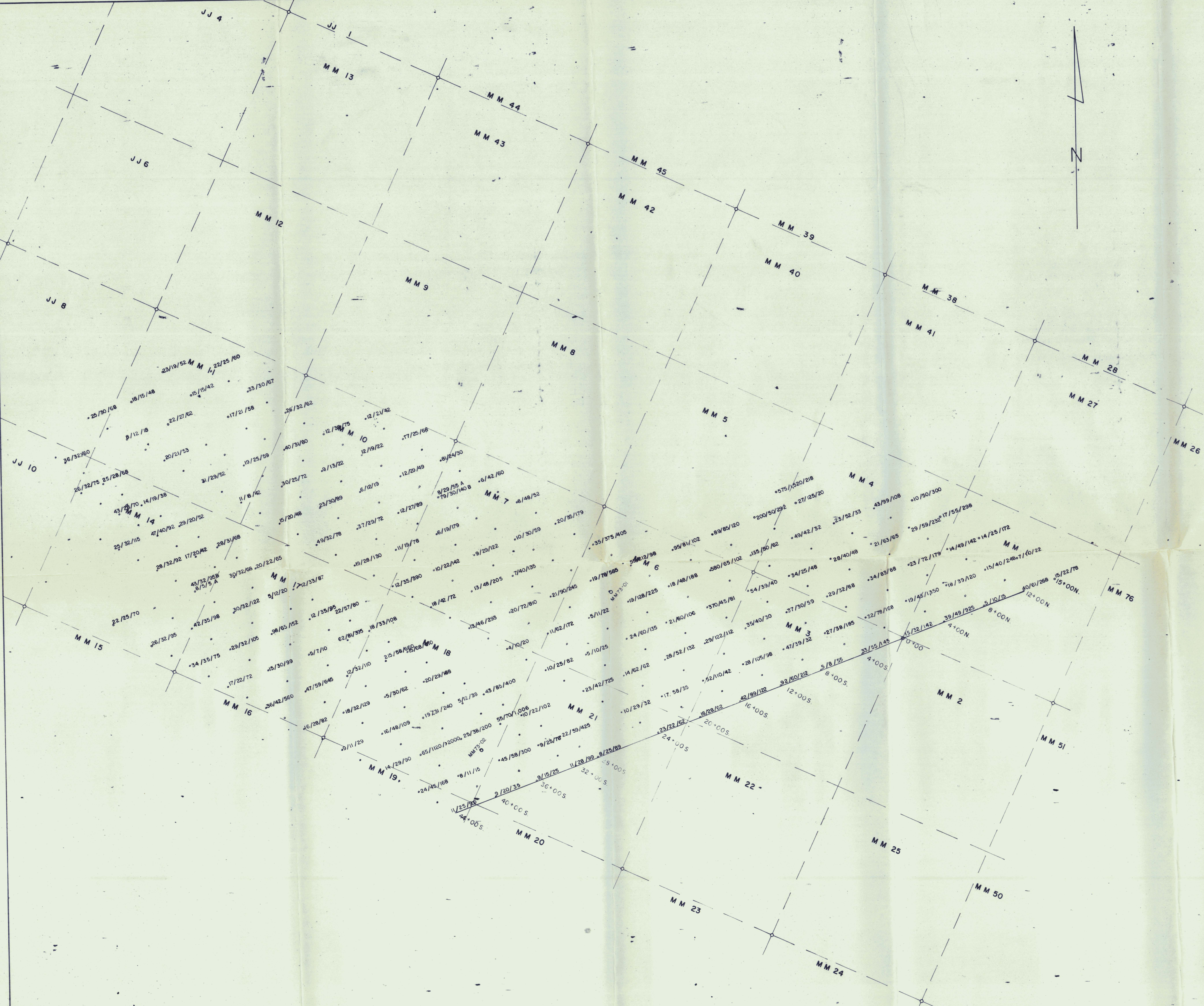
MM AND JJ CLAIM GROUPS-MINERAL CLAIM MAP 105-F7



LEGEND

Contour interval 100 gammas
 Instrument used: Mc PHAR M 700
 FLUX GATE MAGNETOMETER
 Contoured by: Stan K. Buziak
 Date: July 28-30, 1973

ANVIL MINING CORP.
 FARO, Y.T.
 GROUND MAG. SURVEY
 MM CLAIM GROUP
 DATE: MAR 23, 1974
 SCALE: 1" = 400'
 DWG. NO.
 DRAWN BY: SKB



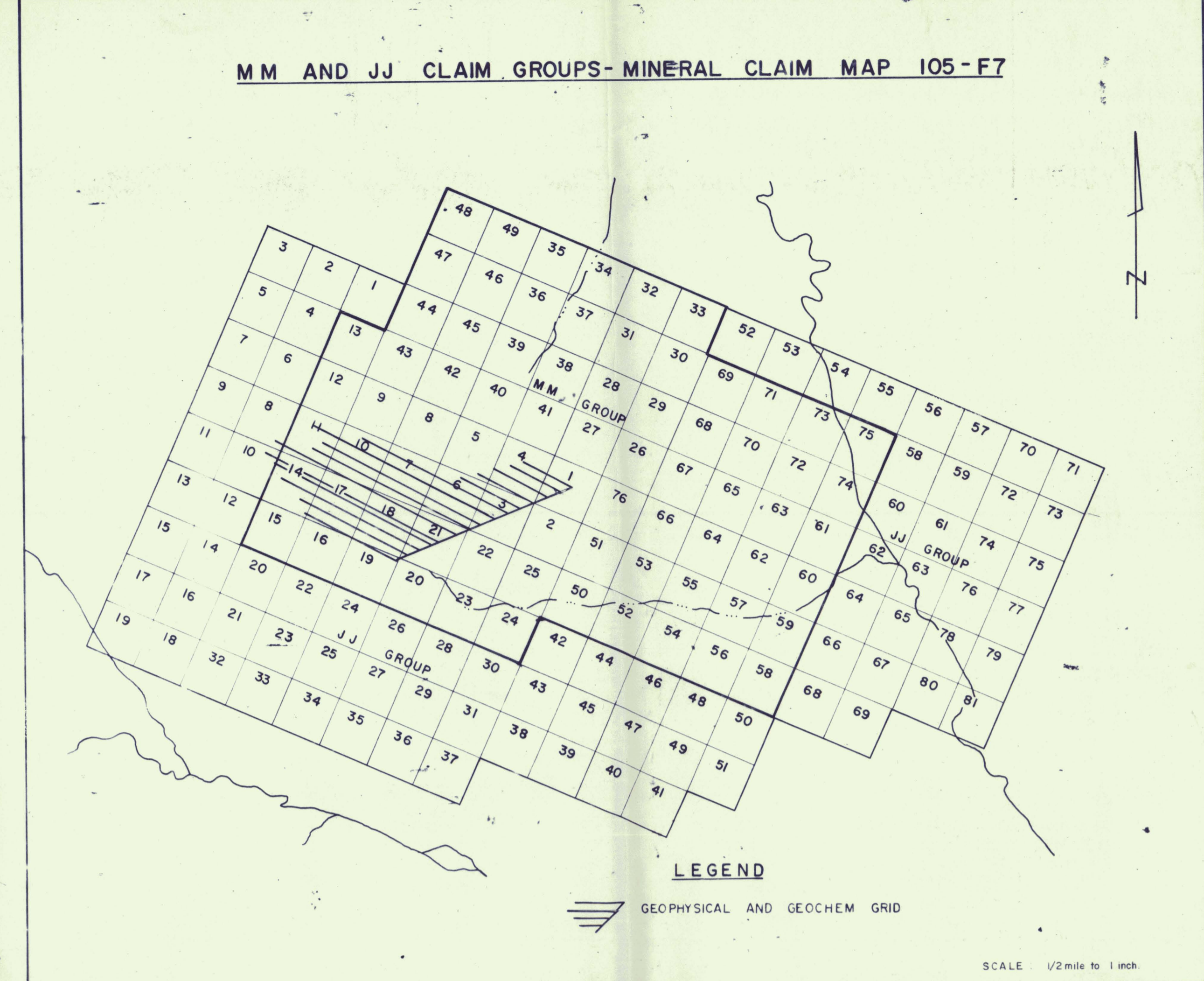
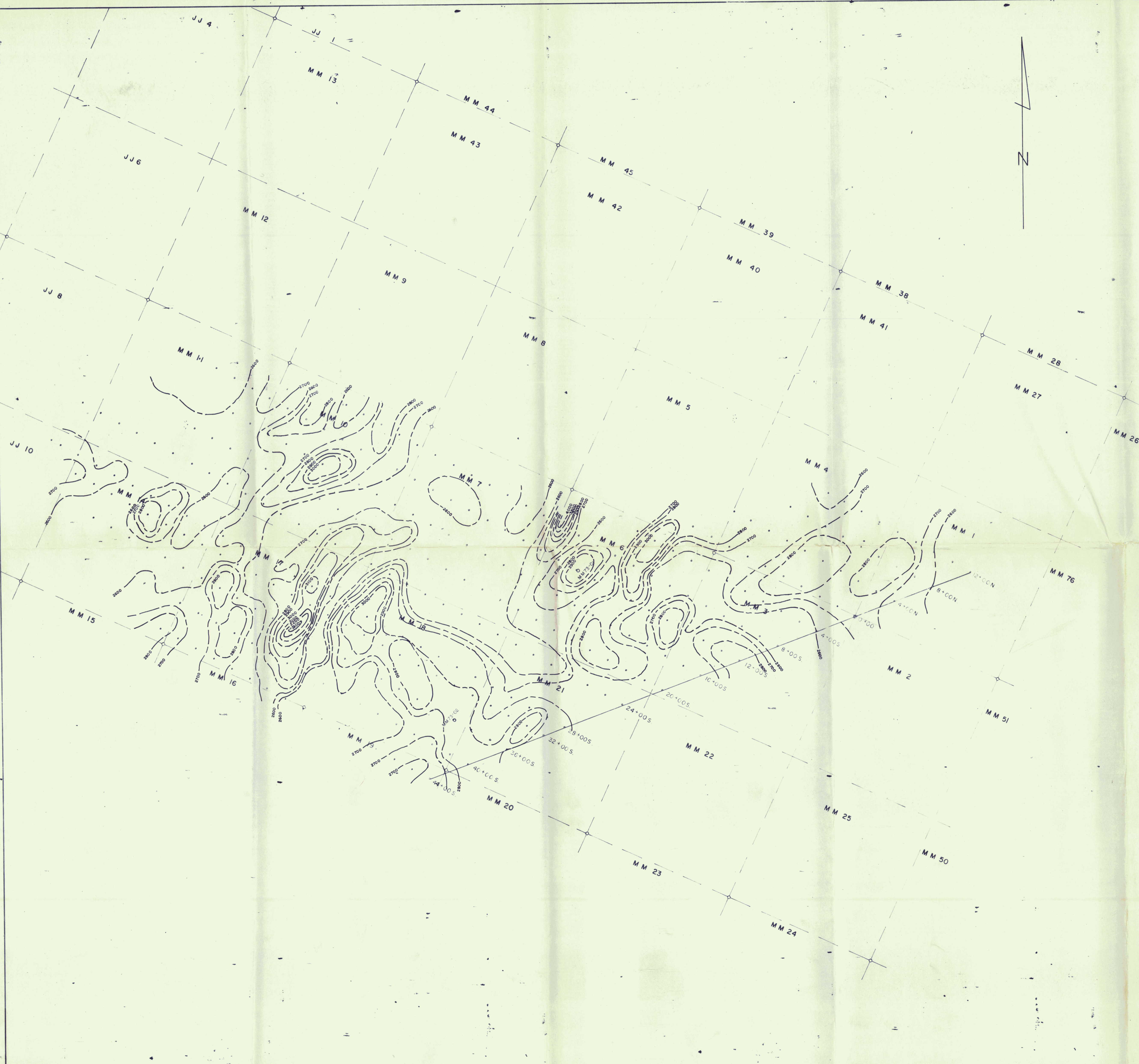
LEGEND
 GEOPHYSICAL AND GEOCHEM GRID

SCALE: 1/2 mile to 1 inch.

LEGEND

• 30/102/620 - Cu / Pb / Zn values in p.p.m.

ANVIL MINING CORP.	
FARO, Y.T.	
GEOCHEM SURVEY MM CLAIMS	
DATE May 9th 1974	DWG. NO.
SCALE: 1" = 400'	
DRAWN BY: S.B.	



LEGEND

Contour interval 100 gammas

Instrument used: Mc PHAR M700
 FLUX GATE MAGNETOMETER

Contoured by: Stan K. Buziak

Date: July 28-30, 1973

ANVIL MINING CORP.	
FARO, Y.T.	
GROUND MAG. SURVEY	
MM CLAIM GROUP	
DATE: MAR. 23, 1974	DWG. NO.
SCALE: 1" = 400'	
DRAWN BY: <i>SKB</i>	