



Department of Indian Affairs and Northern Development
YUKON QUARTZ MINING ACT

FORM "C" - APPLICATION FOR A CERTIFICATE OF WORK

(This form required in duplicate with sketch showing location of work.)



| | | | |
|------------------|------------------------|------------|-----------|
| I (Name) | A. HUREAU | Occupation | GEOLOGIST |
| (Postal Address) | BOX 4290 WHITEHORSE YT | | |

OFFICE DATE STAMP

MAKE OATH AND SAY, THAT :-

- I am the owner, or agent of the owner, of the mineral claim(s) to which reference is made herein.
- I have done, or caused to be done, work on the following mineral claim(s):
(Here list claims on which work was actually done by number and name)

76095 BOB 5
75982 Cameron 1

situated at Mc Rae YT Claim Sheet No. 105 D11
in the Whitehorse Mining District, to the value of at least \$32,278.04
dollars, since the 1st day of Sept 19 75,

to represent the following mineral claims under the authority of Grouping Certificate No. Applied for 61460
(Here list claims to be renewed by number and name in numerical order)

| | | | | |
|--------------------------------------|-----------|--------------|--------|----------|
| 79990 | Blackie 5 | 4 yrs | \$400 | \$20 |
| 91600 | Emidell 8 | " | \$400 | 20 |
| 91824 | " 9 | " | \$400 | 20 |
| 91825 | " 10 | " | \$400 | 20 |
| Y52455 | Anne 22 F | " | \$400 | 20 |
| Y98962 | Geno 33 F | 7 yrs 6 mos* | \$950 | 2250 |
| * Bring to anniversary Date 1 Jan 80 | | | \$2450 | \$122.50 |

- The following is a detailed statement of such work: (Set out full particulars of the work done in the twelve months in which such work is required to be done, as shown by Section 53.)

Drilled 3 holes
NS1 - 60°, AZ 40° Depth 60' abandoned
NS1 - 65° AZ 40° Depth 362' (same location)
NS2 - 50° AZ 40° Depth 1569'
Core stored at Little Chief Mine

Sworn before me at WHITEHORSE, YUKON
this 22 day of DEC 22, 1975 19 75

D. M. Head
A Commissioner for Oaths for Yukon Territory.

[Signature]
Applicant.

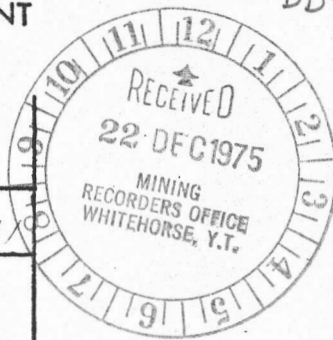
091124

SHOW DATES WORK COMMENCED AND ENDED ON CLAIMS HAVING DIFFERENT ANNIVERSARY DATES



DEPARTMENT OF INDIAN AFFAIRS AND NORTHERN DEVELOPMENT
Yukon Quartz Mining Act
APPLICATION TO GROUP MINERAL CLAIMS

DD-33



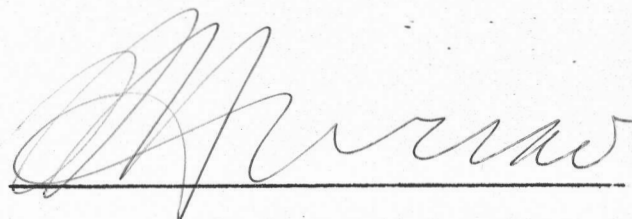
MINING DISTRICT Whitehorse CLAIM SHEET NO. 105-D-1

I (WE) THE UNDERSIGNED OWNER(S) OR AGENT(S) OF THE OWNER(S)
OF THE FOLLOWING MINERAL CLAIMS

| <u>GRANT NUMBER(S)</u> | <u>CLAIM NAME(S)</u> |
|------------------------|----------------------|
| <u>Y 98962</u> | <u>Geno 33 F</u> |
| <u>76096</u> | <u>Bob 5</u> |
| <u>75982</u> | <u>Cameron 1</u> |
| <u>75983</u> | <u>Cameron 2</u> |
| <u>91600</u> | <u>Emidell 8</u> |
| <u>75985</u> | <u>Cameron 4</u> |
| <u>75986</u> | <u>Cameron 5</u> |
| <u>Y 25455</u> | <u>Anne 22 F</u> |
| <u>75990</u> | <u>Blackie 5</u> |
| <u>91824</u> | <u>EMIDELL 9</u> |
| <u>75992</u> | <u>Blackie 7</u> |
| <u>91825</u> | <u>EMIDELL 10</u> |

GIVE NOTICE OF INTENTION TO GROUP THE SAID CLAIMS FOR THE PERFORMANCE OF WORK
AND DO HEREBY APPLY UNDER THE PROVISIONS OF SECTION 52 OF THE YUKON QUARTZ
MINING ACT FOR A CERTIFICATE IN FORM "E"

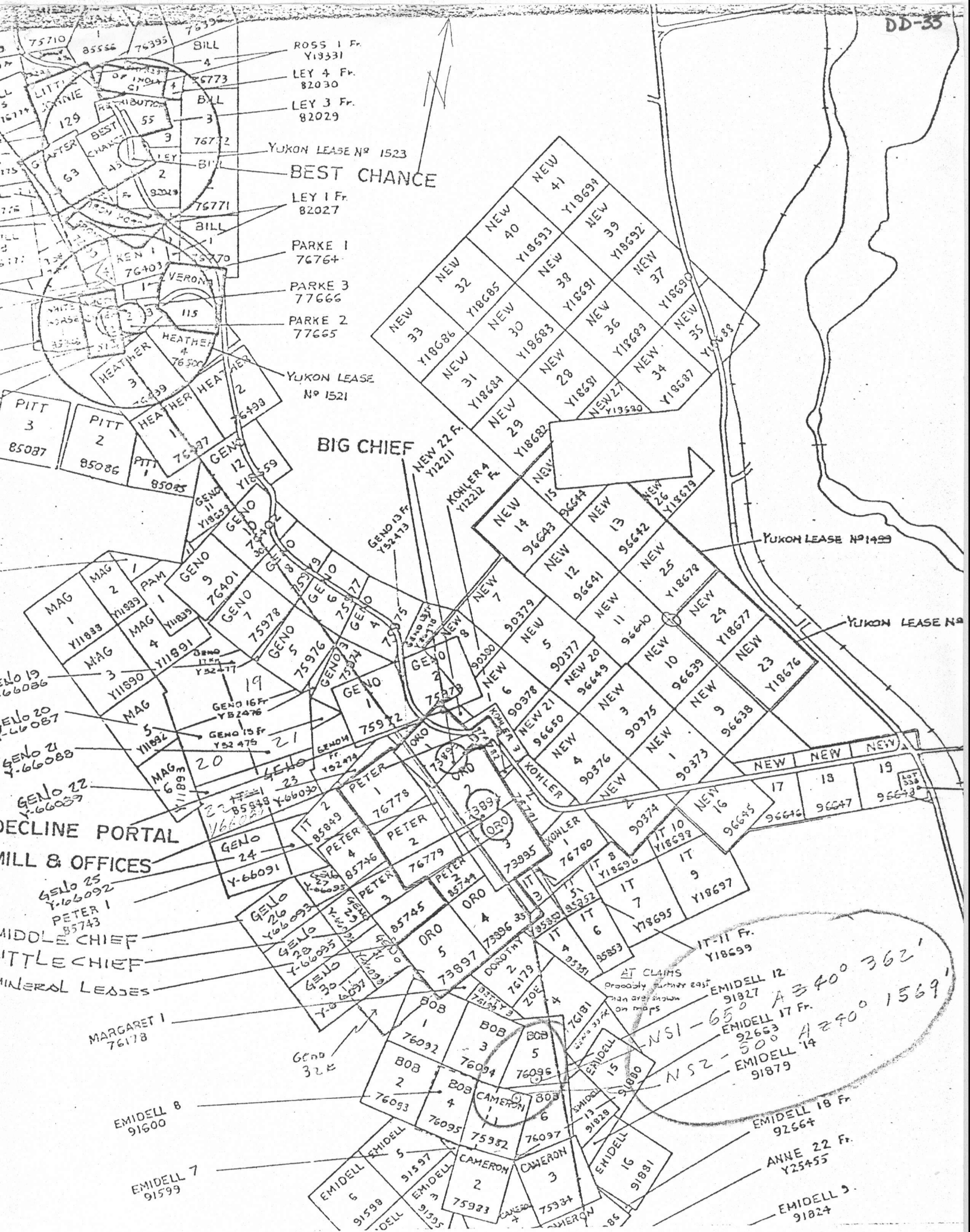
I (WE) HEREBY CERTIFY THAT THE ABOVE CLAIMS ARE ADJOINING AS SHOWN ON ATTACHED SKETCH



DATED AT WHITEHORSE, YUKON

THIS 22 DAY OF Dec. 19 75

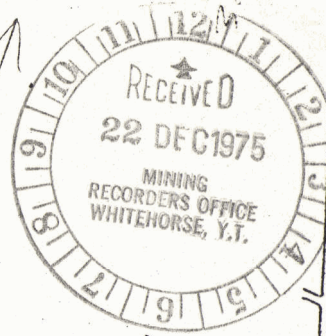
FOR OFFICE USE ONLY.
FORM "E" NO. 6146Q
RECEIPT NO. B332410
DATE APPLIED:



WHITEHORSE COPPER MINES LTD.
 WHITEHORSE, Y.T.

105 P11
 105 P11





WHITEHORSE COPPER MINES LTD
WHITEHORSE, Y.T.

105 D11
1" = 1/2 MI

Core stored
at Little
Chief

AT CLAIMS
probably further east
than are shown
on maps

NS1 A240° - 65° dip
NS2 A2°
ANNE 22 Fr. dip - 50°
Y25+55

DECLINE PORTAL
MILL & OFFICES

MIDDLE CHIEF
LITTLE CHIEF
MINERAL LEASES

BIG CHIEF

BEST CHANCE

BETTY 1
Y11838

MARGARET 1
76178

EMIDELL 8
91600

EMIDELL 7
91599

BLACKIE 1
75938

BLACKIE 3
75939

LEY 1 Fr.
82027

PARKE 1
76764

PARKE 3
77666

PARKE 2
77665

GENO 13 Fr.
Y52413

GENO 14 Fr.
Y52413

GENO 15 Fr.
Y52413

GENO 16 Fr.
Y52413

GENO 17 Fr.
Y52413

GENO 18 Fr.
Y52413

GENO 19 Fr.
Y52413

GENO 20 Fr.
Y52413

GENO 21 Fr.
Y52413

GENO 22 Fr.
Y52413

GENO 23 Fr.
Y52413

GENO 24 Fr.
Y52413

GENO 25 Fr.
Y52413

GENO 26 Fr.
Y52413

GENO 27 Fr.
Y52413

GENO 28 Fr.
Y52413

GENO 29 Fr.
Y52413

GENO 30 Fr.
Y52413

GENO 31 Fr.
Y52413

GENO 32 Fr.
Y52413

GENO 33 Fr.
Y52413

GENO 34 Fr.
Y52413

GENO 35 Fr.
Y52413

GENO 36 Fr.
Y52413

GENO 37 Fr.
Y52413

GENO 38 Fr.
Y52413

GENO 39 Fr.
Y52413

GENO 40 Fr.
Y52413

GENO 41 Fr.
Y52413

GENO 42 Fr.
Y52413

GENO 43 Fr.
Y52413

GENO 44 Fr.
Y52413

GENO 45 Fr.
Y52413

GENO 46 Fr.
Y52413

GENO 47 Fr.
Y52413

GENO 48 Fr.
Y52413

GENO 49 Fr.
Y52413

GENO 50 Fr.
Y52413

GENO 51 Fr.
Y52413

GENO 52 Fr.
Y52413

GENO 53 Fr.
Y52413

GENO 54 Fr.
Y52413

GENO 55 Fr.
Y52413

GENO 56 Fr.
Y52413

GENO 57 Fr.
Y52413

GENO 58 Fr.
Y52413

GENO 59 Fr.
Y52413

GENO 60 Fr.
Y52413

GENO 61 Fr.
Y52413

GENO 62 Fr.
Y52413

GENO 63 Fr.
Y52413

GENO 64 Fr.
Y52413

GENO 65 Fr.
Y52413

GENO 66 Fr.
Y52413

GENO 67 Fr.
Y52413

GENO 68 Fr.
Y52413

GENO 69 Fr.
Y52413

GENO 70 Fr.
Y52413

GENO 71 Fr.
Y52413

GENO 72 Fr.
Y52413

GENO 73 Fr.
Y52413

GENO 74 Fr.
Y52413

GENO 75 Fr.
Y52413

GENO 76 Fr.
Y52413

GENO 77 Fr.
Y52413

GENO 78 Fr.
Y52413

GENO 79 Fr.
Y52413

GENO 80 Fr.
Y52413

GENO 81 Fr.
Y52413

GENO 82 Fr.
Y52413

GENO 83 Fr.
Y52413

GENO 84 Fr.
Y52413

GENO 85 Fr.
Y52413

GENO 86 Fr.
Y52413

GENO 87 Fr.
Y52413

GENO 88 Fr.
Y52413

GENO 89 Fr.
Y52413

GENO 90 Fr.
Y52413

GENO 91 Fr.
Y52413

GENO 92 Fr.
Y52413

GENO 93 Fr.
Y52413

GENO 94 Fr.
Y52413

GENO 95 Fr.
Y52413

GENO 96 Fr.
Y52413

GENO 97 Fr.
Y52413

GENO 98 Fr.
Y52413

GENO 99 Fr.
Y52413

GENO 100 Fr.
Y52413

GENO 101 Fr.
Y52413

GENO 102 Fr.
Y52413

GENO 103 Fr.
Y52413

GENO 104 Fr.
Y52413

GENO 105 Fr.
Y52413

GENO 106 Fr.
Y52413

GENO 107 Fr.
Y52413

GENO 108 Fr.
Y52413

GENO 109 Fr.
Y52413

GENO 110 Fr.
Y52413

GENO 111 Fr.
Y52413

GENO 112 Fr.
Y52413

GENO 113 Fr.
Y52413

GENO 114 Fr.
Y52413

GENO 115 Fr.
Y52413

GENO 116 Fr.
Y52413

GENO 117 Fr.
Y52413

GENO 118 Fr.
Y52413

GENO 119 Fr.
Y52413

GENO 120 Fr.
Y52413

GENO 121 Fr.
Y52413

GENO 122 Fr.
Y52413

GENO 123 Fr.
Y52413

GENO 124 Fr.
Y52413

GENO 125 Fr.
Y52413

GENO 126 Fr.
Y52413

GENO 127 Fr.
Y52413

GENO 128 Fr.
Y52413

GENO 129 Fr.
Y52413

GENO 130 Fr.
Y52413

GENO 131 Fr.
Y52413

GENO 132 Fr.
Y52413

GENO 133 Fr.
Y52413

GENO 134 Fr.
Y52413

GENO 135 Fr.
Y52413

GENO 136 Fr.
Y52413

GENO 137 Fr.
Y52413

GENO 138 Fr.
Y52413

GENO 139 Fr.
Y52413

GENO 140 Fr.
Y52413

GENO 141 Fr.
Y52413

GENO 142 Fr.
Y52413

GENO 143 Fr.
Y52413

GENO 144 Fr.
Y52413

GENO 145 Fr.
Y52413

GENO 146 Fr.
Y52413

GENO 147 Fr.
Y52413

GENO 148 Fr.
Y52413

GENO 149 Fr.
Y52413

GENO 150 Fr.
Y52413

GENO 151 Fr.
Y52413

GENO 152 Fr.
Y52413

GENO 153 Fr.
Y52413

GENO 154 Fr.
Y52413

GENO 155 Fr.
Y52413

GENO 156 Fr.
Y52413

GENO 157 Fr.
Y52413

GENO 158 Fr.
Y52413

GENO 159 Fr.
Y52413

GENO 160 Fr.
Y52413

GENO 161 Fr.
Y52413

GENO 162 Fr.
Y52413

GENO 163 Fr.
Y52413

GENO 164 Fr.
Y52413

GENO 165 Fr.
Y52413

GENO 166 Fr.
Y52413

GENO 167 Fr.
Y52413

GENO 168 Fr.
Y52413

GENO 169 Fr.
Y52413

GENO 170 Fr.
Y52413

GENO 171 Fr.
Y52413

GENO 172 Fr.
Y52413

GENO 173 Fr.
Y52413

GENO 174 Fr.
Y52413

GENO 175 Fr.
Y52413

GENO 176 Fr.
Y52413

GENO 177 Fr.
Y52413

GENO 178 Fr.
Y52413

GENO 179 Fr.
Y52413

GENO 180 Fr.
Y52413

GENO 181 Fr.
Y52413

GENO 182 Fr.
Y52413

GENO 183 Fr.
Y52413

GENO 184 Fr.
Y52413

GENO 185 Fr.
Y52413

GENO 186 Fr.
Y52413

GENO 187 Fr.
Y52413

GENO 188 Fr.
Y52413

GENO 189 Fr.
Y52413

GENO 190 Fr.
Y52413

GENO 191 Fr.
Y52413

GENO 192 Fr.
Y52413

GENO 193 Fr.
Y52413

GENO 194 Fr.
Y52413

GENO 195 Fr.
Y52413

GENO 196 Fr.
Y52413

GENO 197 Fr.
Y52413

GENO 198 Fr.
Y52413

GENO 199 Fr.
Y52413

GENO 200 Fr.
Y52413

GENO 201 Fr.
Y52413

GENO 202 Fr.
Y52413

GENO 203 Fr.
Y52413

GENO 204 Fr.
Y52413

GENO 205 Fr.
Y52413

GENO 206 Fr.
Y52413

GENO 207 Fr.
Y52413

GENO 208 Fr.
Y52413

GENO 209 Fr.
Y52413

GENO 210 Fr.
Y52413

GENO 211 Fr.
Y52413

GENO 212 Fr.
Y52413

GENO 213 Fr.
Y52413

GENO 214 Fr.
Y52413

GENO 215 Fr.
Y52413

GENO 216 Fr.
Y52413

GENO 217 Fr.
Y52413

GENO 218 Fr.
Y52413

GENO 219 Fr.
Y52413

GENO 220 Fr.
Y52413

GENO 221 Fr.
Y52413

GENO 222 Fr.
Y52413

GENO 223 Fr.
Y52413

GENO 224 Fr.
Y52413

GENO 225 Fr.
Y52413

GENO 226 Fr.
Y52413

GENO 227 Fr.
Y52413

GENO 228 Fr.
Y52413

GENO 229 Fr.
Y52413

GENO 230 Fr.
Y52413

GENO 231 Fr.
Y52413

GENO 232 Fr.
Y52413

E. Caron Diamond Drilling Limited

HEAD OFFICE:
7 ROUNDEL ROAD
WHITEHORSE, Y.T. Y1A-3H3
PHONE 668-2424 - 668-2425
TELEX 036-8-337

CONTRACT DIAMOND DRILLING

VANCOUVER OFFICE:
3-425 HOWE STREET
VANCOUVER, B.C. V6C-2A9
PHONE 687-4634

October 15, 1975

Invoice #-90

IN ACCOUNT WITH:

Whitehorse Copper Mines Limited,
Box 4280,
Whitehorse, Y. T.
Y1A 3T3

Drilling charges September 29 to October 15, 1975

(Whitehorse Project)

Hole: 75-NS-1 x 60° x BQ

Casing - Field Cost

| | | | | |
|-----------------|------------------|------|--------|-----------|
| 34 man hrs. | @ \$9.95 per hr. | = \$ | 338.30 | |
| 17 machine hrs. | @ \$8.50 per hr. | = \$ | 144.50 | \$ 482.80 |

Casing - Overburden

| | | | | |
|-----------------|-------------------|---|--|-----------|
| 0 - 50 = 50 ft. | @ \$14.75 per ft. | = | | \$ 737.50 |
|-----------------|-------------------|---|--|-----------|

Drilling

| | | | | |
|-----------------|-------------------|---|----------|-------------|
| 58 - 60 = 2 ft. | @ \$12.25 per ft. | = | \$ 24.50 | \$ 1,244.80 |
|-----------------|-------------------|---|----------|-------------|

Hole: 75-NS-1 x 65° x BQ

Moving - Field Cost

| | | | | |
|----------------|------------------|------|--------|-----------|
| 12 man hrs. | @ \$9.95 per hr. | = \$ | 119.40 | |
| 6 machine hrs. | @ \$8.50 per hr. | = \$ | 51.00 | \$ 170.40 |

Casing - Overburden

| | | | | |
|-----------------|-------------------|---|--|-----------|
| 0 - 42 = 42 ft. | @ \$14.75 per ft. | = | | \$ 619.50 |
|-----------------|-------------------|---|--|-----------|

Drilling

| | | | | |
|--------------------|-------------------|---|-------------|-------------|
| 42 - 362 = 320 ft. | @ \$12.25 per ft. | = | \$ 3,920.00 | \$ 4,709.90 |
|--------------------|-------------------|---|-------------|-------------|

Hole: 75-NS-2 x 50° x BQ

Reaming (To keep hole open)

| | | | | |
|----------------|------------------|------|--------|-----------|
| 18 man hrs. | @ \$9.95 per hr. | = \$ | 179.10 | |
| 9 machine hrs. | @ \$8.50 per hr. | = \$ | 76.50 | \$ 255.60 |

Mud Time

| | | | | |
|-----------------|------------------|------|--------|-------------|
| 78 man hrs. | @ \$9.95 per hr. | = \$ | 776.10 | |
| 39 machine hrs. | @ \$8.50 per hr. | = \$ | 331.50 | \$ 1,107.60 |

Testing

| | | | | |
|---------------|------------------|------|-------|----------|
| 2 man hrs. | @ \$9.95 per hr. | = \$ | 19.90 | |
| 1 machine hr. | @ \$8.50 per hr. | = \$ | 8.50 | \$ 28.40 |

Standby

| | | | | |
|------------|------------------|---|--|----------|
| 2 man hrs. | @ \$9.95 per hr. | = | | \$ 19.90 |
|------------|------------------|---|--|----------|

Casing - Overburden

| | | | | |
|-----------------|-------------------|---|--|-----------|
| 0 - 14 = 14 ft. | @ \$14.75 per ft. | = | | \$ 206.50 |
|-----------------|-------------------|---|--|-----------|

091124

D

Oct. 27th 75

6-300

E. Caron Diamond Drilling Limited

HEAD OFFICE:
7 ROUNDEL ROAD
WHITEHORSE, Y.T. Y1A-3H3
PHONE 668-2424 - 668-2425
TELEX 036-8-337

CONTRACT DIAMOND DRILLING

VANCOUVER OFFICE:
3-425 HOWE STREET
VANCOUVER, B.C. V6C-2A9
PHONE 687-4634

Drilling

| | | | |
|-----------------------|-------------------|--------------|--------------------------------|
| 14 - 500 = 486 ft. | @ \$12.25 per ft. | = \$5,953.50 | |
| 500 - 1000 = 500 ft. | @ \$13.00 per ft. | = \$6,500.00 | |
| 1000 - 1321 = 321 ft. | @ \$14.00 per ft. | = \$4,494.00 | |
| | | | <u>\$16,947.50</u> \$18,565.50 |

Equipment (Left in Hole: NS-1 x 60° x BQ)

| | | | | |
|-------------|---------------------------------------|---|------------------|-----------|
| Sept 30 N/S | 2 only BQ 10' rods @ \$49.20 each | = | \$ 98.40 | |
| | 1 only BW shoe #44794 @ \$122.55 each | = | \$ 122.55 | |
| Oct. 1 D/S | 1 only BQ bit #8985 @ \$308.90 | = | \$ 308.90 | |
| | 1 only BW shoe # 142W856 @ \$132.40 | = | \$ 132.40 | |
| | 1 only BQ shell #45120 @ \$208.50 | = | \$ 208.50 | |
| | | | <u>\$ 870.75</u> | |
| | Less 15% usage | | <u>\$ 130.61</u> | \$ 740.14 |

Supplies

| | | | |
|--------------------------------------------|---|------------------|-------------|
| 88 only bags of mud @ \$10.50 per bag | = | \$ 924.00 | |
| 65 only bags of Quik Trol @ \$7.75 each | = | \$ 503.75 | |
| 45 only lbs. of Caustic Soda @ 50¢ per lb. | = | \$ 22.50 | |
| 90 only BQ core boxes @ \$5.50 each | = | <u>\$ 495.00</u> | \$ 1,945.25 |

Total Invoice

\$27,205.59

E. Caron Diamond Drilling Limited

HEAD OFFICE:
7 ROUNDEL ROAD
WHITEHORSE, Y.T. Y1A-3H3
PHONE 668-2424 - 668-2425
TELEX 036-8-337

CONTRACT DIAMOND DRILLING

VANCOUVER OFFICE:
3-425 HOWE STREET
VANCOUVER, B.C. V6C-2A9
PHONE 687-4634

October 20, 1975

Invoice #-94

IN ACCOUNT WITH:

Whitehorse Copper Mines Limited,
Box 4280,
Whitehorse, Y. T.
Y1A 3T3

Drilling charges October 16 to 20, 1975

(Whitehorse Project)

Hole: 75-NS-2 x 50° x BQ

Reaming (To Keep Hole Open)

| | | | |
|----------------|------------------|------------|-----------|
| 10 man hrs. | @ \$9.95 per hr. | = \$ 99.50 | |
| 5 machine hrs. | @ \$8.50 per hr. | = \$ 42.50 | \$ 142.00 |

Mud Time

| | | | |
|-----------------|------------------|------------|-----------|
| 60 man hrs. | @ \$9.95 per hr. | = \$597.00 | |
| 30 machine hrs. | @ \$8.50 per hr. | = \$255.00 | \$ 852.00 |

Testing

| | | | |
|----------------|------------------|------------|----------|
| 6 man hrs. | @ \$9.95 per hr. | = \$ 59.70 | |
| 3 machine hrs. | @ \$8.50 per hr. | = \$ 25.50 | \$ 85.20 |

Drilling

| | | | | |
|-----------------------|-------------------|---|-------------------|------------|
| 1321 - 1569 = 248 ft. | @ \$14.00 per ft. | = | <u>\$3,472.00</u> | \$4,551.20 |
|-----------------------|-------------------|---|-------------------|------------|

Supplies

| | | | | |
|------------------------------|-------------------|---|-----------------|-----------|
| 30 only bags of Mud | @ \$10.50 per bag | = | \$ 315.00 | |
| 25 only bags of Quik Trol | @ \$7.75 per bag | = | \$ 193.75 | |
| 25 only lbs. of Caustic Soda | @ 50¢ per lb. | = | <u>\$ 12.50</u> | \$ 521.25 |

Total Invoice \$5,072.45

2,405.59

(Total Footage = 1,983 ft.)

NIS 1 A 60'
 NIS 1 362'
 NIS 2 1569'
~~250~~
 1191'

and your payment
 Nov 75
 # 2045/EX
 Total = \$16.21/EX

WHITEHORSE COPPER MINES LTD.

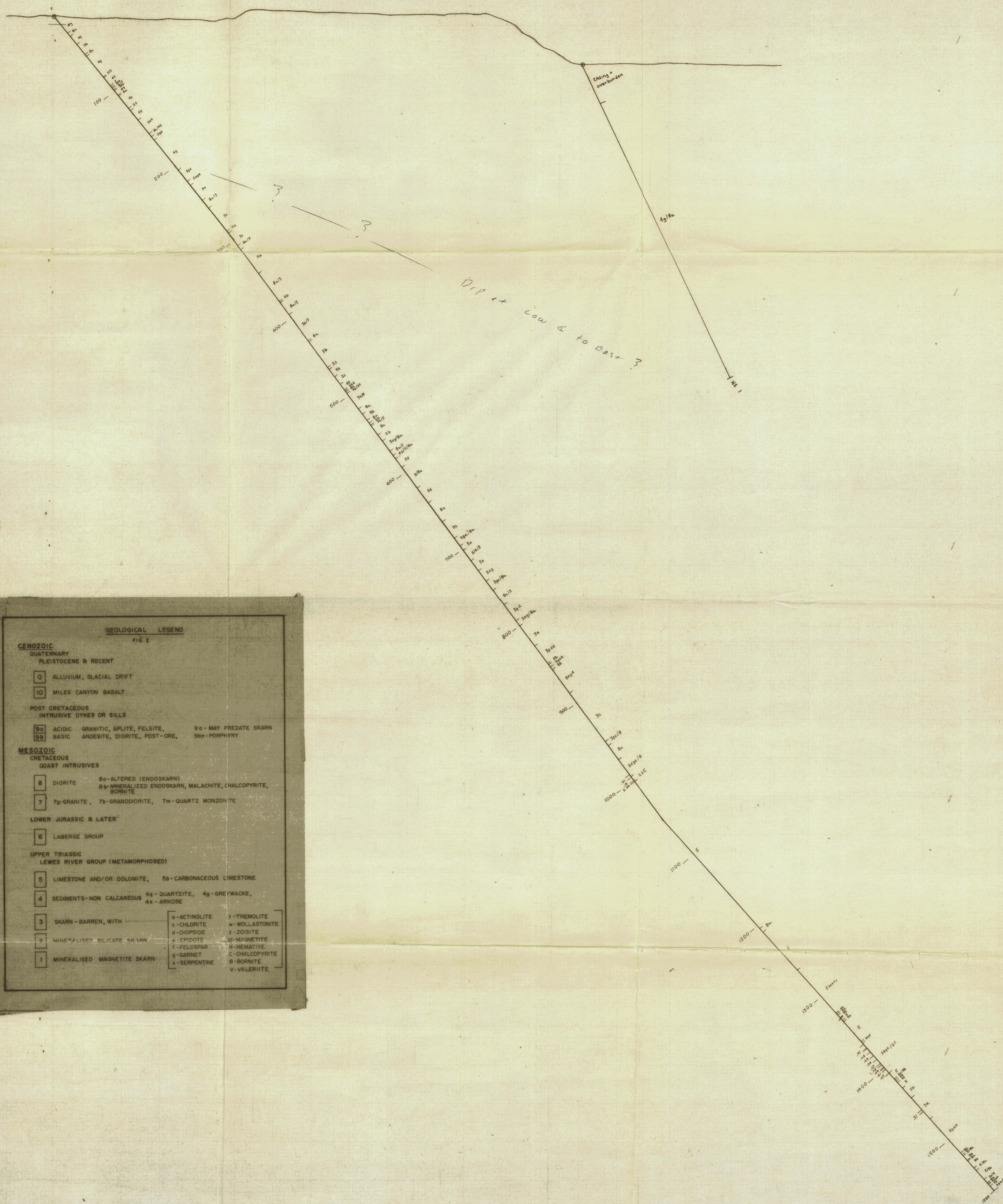
P.O. BOX 4280
YUKON TERRITORY

DD-33

Hole No. NS 2 Page No. 23

| FOOTAGE | | | ROCK CLASSIFICATION Epid, Diop, Garn, Serp, Qtz/Sil, Actino, Tremo, Chlo, Crystalline, Shearing, Veins, Fracturing, Foliation, Grain Size, Texture | MINERALIZATION | | ASSAY DATA | | | | | | |
|---------|--------|-----|----------------------------------------------------------------------------------------------------------------------------------------------------------------------------------------------------------------------------------------------------------------------------------------------------------------------------------------------------------------------------------|----------------|------|------------|-------|--------|------|------|------|-------|
| From | To | | | TYPE | % | Sample No. | Width | Recov. | % Cu | % Fe | Moly | Ag/Ag |
| 1330.8 | 1334.0 | 5 | MASSIVE WHITE LIMESTONE. | | | | | | | | | |
| 1334.0 | 1336.1 | 90 | HIGHLY ALTERED DIAPYSE DYKE SOFT. AND WEAKLY KARNITIC. CONTACTS FRAGMENTED AND "MOODY" | | | | | | | | | |
| 1336.1 | 1363.7 | 5 | WHITE LIMESTONE LOCAL IRREGULAR SPERKED TO NEAR SOLID GREY BANDS. FIND VERY WEAK RELIC FOSSIL TEXTURES OR OUTLINES WITHIN MORE PROMINENT GREY AREAS. VERY RARE SPECKS OF PYRITE. 1338.8 - 1360. SERPENTINIZED LIMESTONE SURROUNDING IN RESINOUS GREEN SERPENTINE STRINGER AFTER 1360 THE LIMESTONE IS WEAKLY SERPENTINIZED. MORE PROMINENT UN JOINTS. | | | | | | | | | |
| 1363.7 | 1365.0 | 395 | GARNETIFEROUS SERPENTINE SEAM. 1364 - 1364.3 FRAGMENTED MUD SEAM. MEDIUM GRAINED SUBHEDRAL GARNETS IN A RESINOUS GREEN SERPENTINE GROUNDMASS. | 1365-1370 | 5449 | 5.0 | 5.0 | .91 | | | .18 | .05 |
| | | | | 1371-1376 | 5450 | 5.0 | 4.5 | .02 | | | .03 | .39 |
| | | | | 1376-1381 | 5451 | 5.0 | 4.5 | .03 | | | .03 | .04 |
| | | | | 1381-1386 | 5452 | 5.0 | 5.0 | .04 | | | TR | .08 |
| 1365.0 | 1405.3 | 390 | SILICATE SEAM. GARNET DIAPYSE EPIDOTE, MEDIUM TO COARSE GRAINED CONTAINS FEW NARROW BANDS RESINOUS GREEN SERPENTINE 1365-1366 MAINLY GARNET EPIDOTE GROUNDMASS WITH 5% EUBEDRAL FINE GARNET CRYSTALS AND 5-7% PYRITE. TONE CHARACTERISTIC TO 1392 AFTER 1392 AVERAGE 3% TO 1394 | 1386-1392 | 5453 | 6.0 | 5.5 | .07 | | | .03 | .03 |
| | | | | 1392-1394 | 5454 | 2 | 2 | 1.75 | | | .41 | .23 |
| | | | | 1394-1397 | 5455 | 3 | 2.7 | .02 | | | .03 | .03 |
| | | | | 1398-1400 | 5456 | 2 | 2 | .91 | | | .06 | .56 |
| | | | | 1400-1405 | 5457 | 5 | 5 | .07 | | | .03 | .13 |

—12 00W —11 00W —10 00W —9 00W —8 00W —7 00W —6 00W —5 00W —4 00W



GEOLOGICAL LEGEND
FIG. 2

CENOZOIC

QUATERNARY
PLEISTOCENE & RECENT

0 ALLUVIUM, GLACIAL DRIFT
10 MILES CANYON BASALT

POST CRETACEOUS
INTRUSIVE DYKES OR SILLS

9a ACIDIC GRANITIC, APLITE, FELSITE, 9a - MAY PREDATE SKARN
9b BASIC ANDESITE, DIORITE, POST-ORE, 9b - PORPHYRY

MESOZOIC

CRETACEOUS
GAST INTRUSIVES

8 DIORITE 8a - ALTERED (ENDOSKARN)
8b - MINERALIZED ENDOSKARN, MALACHITE, CHALCOPYRITE, BORNIITE
7 7a - GRANITE, 7b - GRANODIORITE, 7m - QUARTZ MONZONITE

LOWER JURASSIC & LATER

6 LABERGE GROUP

UPPER TRIASSIC
LEWES RIVER GROUP (METAMORPHOSED)

5 LIMESTONE AND/OR DOLOMITE, 5b - CARBONACEOUS LIMESTONE
4 SEDIMENTS - NON CALCAREOUS 4q - QUARTZITE, 4g - GREYWACKE,
4k - ARKOSE

| | | |
|-------------------------------|----------------|------------------|
| 3 SKARN - BARREN, WITH | a - ACTINOLITE | 1 - TREMOLITE |
| | c - CHLORITE | w - WOLLASTONITE |
| | d - DIOPSIDE | z - ZOIISITE |
| 2 MINERALISED SILICATE SKARN | e - EPIDOTE | m - MAGNETITE |
| | f - FELDSPAR | h - HEMATITE |
| | g - GARNET | c - CHALCOPYRITE |
| 1 MINERALISED MAGNETITE SKARN | s - SERPENTINE | b - BORNIITE |
| | | v - VALERIITE |

WHITEHORSE COPPER MINES
NORTH STAR - SECTION 28 S

DRAWN BY: EG SCALE: 1" = 40' LOOKING: GRID NORTH 320°

DATE: Oct 29/75

09124