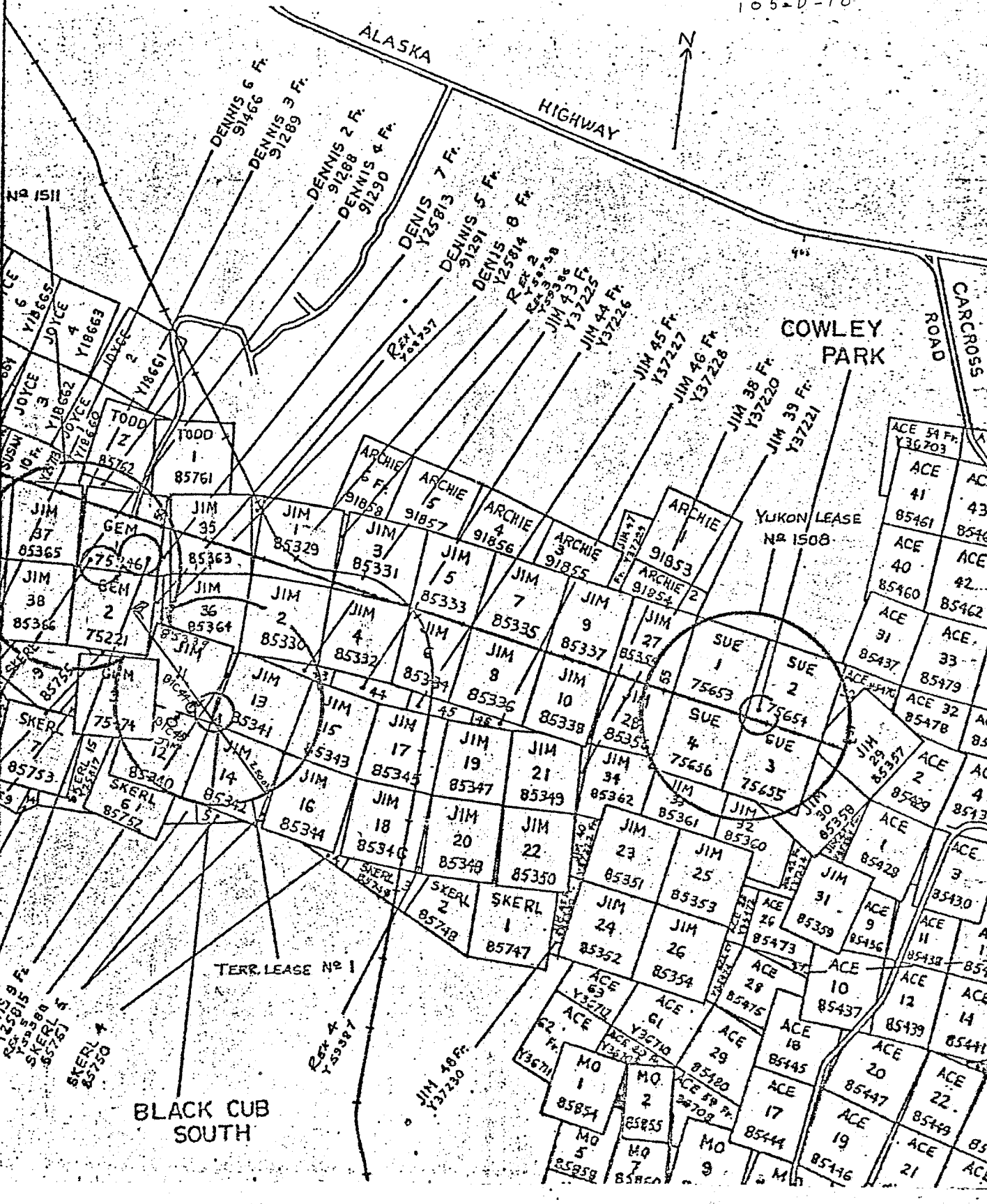


TABLE OF CONTENTS

	Page
Introduction	1
Geology	1
Results	1
References	2
Accompanying Diagrams	Located
Figure 1 - Location Map	In Report
Figure 2 - General Geology Surface Map	In Report
Figure 3 - Table of Formations	In Report
Figure 4 - Section 3400E	In Pocket
Annex A - Vouchers of Expenditures	In Pocket

FIG 1

Black Cub South
Claim Location
1" = 1/2 MI. A.H. Dec 73
105-0-10



091112

INTRODUCTION

This report describes the results of two diamond drill holes drilled by Caron Diamond Drilling of Whitehorse, for Whitehorse Copper Mines Ltd., near the Black Cub south ore zone. The area is located two miles south of mile 907 of the Alaska Highway in the Whitehorse area of the Yukon. The property is accessible by a good haulage road from McCrae.

Figure 1 is a sketch of the location of the drilling in relation to the claim boundaries.

The drilling was supervised by the writer.

GEOLOGY

Bornite and chalcopryrite occur in a magnetite-serpentine skarn which is part of a skarn, limestone, quartzite greywacke sequence of the Lewes River Group, striking south easterly and dipping to the south west. The mineralization occurs within a few hundred feet of diorite to the east and west.

Approximately 200,000 tons of ore grading 1.3% cu have been mined by open pit means. Figure 2 is a sketch of the general geology. Figure 3 is a table of formations.

References to the general geology are listed at the end of this report.

RESULTS

Two holes (BQ) were drilled to check the diorite-sediments contact at depth for skarn type mineralization. Both holes were drilled on section 3400E (Figure 4 - in Pocket) BLC 44 (3400E, 2320N, 2640' Elevation, - 58°N) was drilled to a depth of 807'. Only weak uneconomic mineralization was encountered.

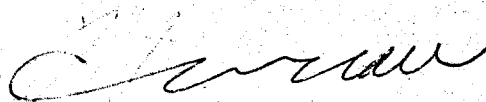
BLC 45 (3400E 18 + 00N, 2635' elevation, - 60°N) was stopped at 128' due to extremely poor drilling conditions. Drilling mud could not be used because of extremely cold temperatures. An attempt will be made to deepen the hole when weather conditions are more favourable.

EXPENDITURES

The cost of drilling 935' was \$10,583.33 or \$11.32 per ft. not including assaying or Whitehorse Copper supervision. High costs resulted from poor ground conditions, depth of overburden and cold temperatures.

Vouchers for expenditures are included as Annex A. (In pocket).

Respectfully submitted,



R.A. Hureau,
Geologist.

References:

Wheeler, J.O. - 1961 Whitehorse
Map Area Yukon Territory
Geol. Surv. Can
Mem 312

Kindle, E.D. - Copper & Iron Resources
of the Whitehorse Copper Belt
Geol. Surv. Can
Paper 63-41

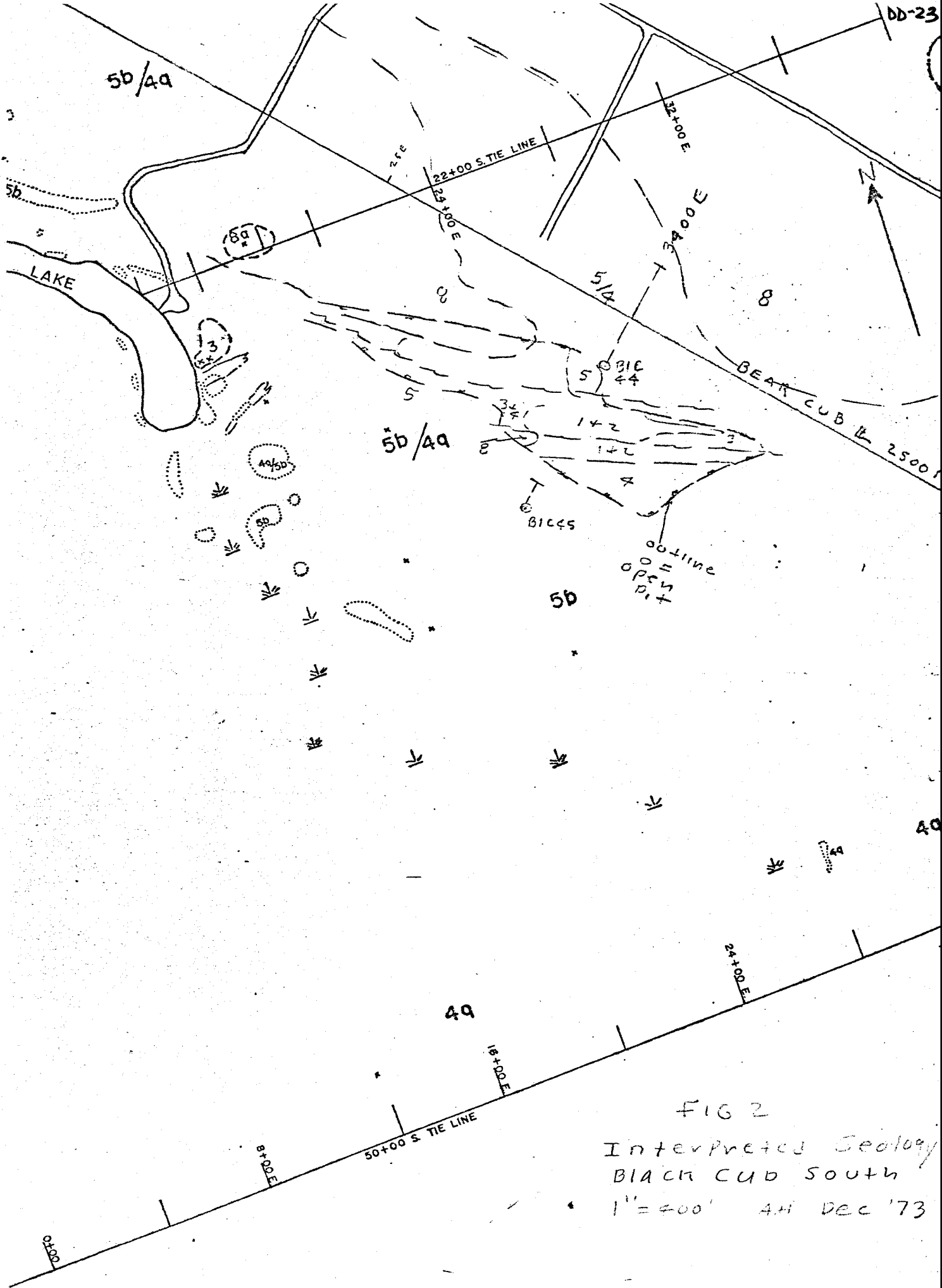


FIG 2
 Interpreted Geology
 BLACK CUB SOUTH
 1" = 500' AH DEC '73

GEOLOGICAL LEGEND

CENOZOIC

QUATERNARY

PLEISTOCENE & RECENT

735 **Q** ALLUVIUM, GLACIAL DRIFT

746 **10** MILES CANYON BASALT

POST CRETACEOUS

INTRUSIVE DYKES OR SILLS

755 **9a** ACIDIC GRANITIC, APLITE, FELSITE, 9a - may predate skarn

734 ¹/₂ **9b** BASIC ANDESITE, DIORITE, POST-ORE, 9bx - porphyry

MESOZOIC

CRETACEOUS

COAST INTRUSIVES

752 **8** DIORITE 8a ALTERED (ENDOSKARN)
8i MINERALIZED ENDOSKARN,
MALACHITE, CHALCOPYRITE, BORNITE

752 **7** 7g GRANITE, 7b GRANODIORITE,
7m QUARTZ-MONZONITE

LOWER JURASSIC & LATER

746 ¹/₂ **6** LABERGE GROUP

UPPER TRIASSIC

LEWES RIVER GROUP (METAMORPHOSED)

740 ¹/₂ **5** LIMESTONE AND/OR DOLOMITE, 5b-CARBONACE-
OUS LIMESTONE

736 ¹/₂ **4** QUARTZITE, GREYWACKE, 4q QUARTZITE
4g GREYWACKE

4 ARGILLITE, ARKOSE 4k ARKOSE

738 **3** SKARN BARREN, WITH a-ACTINOLITE
c-CHLORITE

745 **2** SKARN MINERALIZED,
BORNITE, CHALCOPYRITE, d-DIOPSIDE
e-EPIDOTE
COPPER OXIDES, WITH f-FELDSPAR z-ZOISITE

745 **1** SKARN MAGNETITE, g-GARNET
s-SERPENTINE
t-TREMOLITE
w-WOLLASTONITE
BORNITE, CPY, VALERIITE,
COPPER OXIDES, WITH

SUMMARY OF DRILLING COSTS

BIC 44 & BLC 45

FROM INVOICE 2 NOV 73

Drilling		2835.20
Company Time	68 x 7.25	493.00
Casing		335.00
Tractor	4 x 26	104.00
Core boxes		59.50
Propane		78.50

Total		<u>3905.20</u>
-------	--	----------------

FROM INVOICE 6 DEC 73

Drilling		3539.60
Company time	190 x 7.25	1377.50
Casing		934.00
Tractor	6 x 26	156.00
Core boxes	433 / 333 x 360	115.20
Propane	27/66 x 767.15	314.53
Mach Rental		241.30

		<u>6678.13</u>
--	--	----------------

Total for BIC 44 & 45

	<u><u>10,583.33</u></u>
--	-------------------------

E. Caron Diamond Drilling Limited

HEAD OFFICE:
7 ROUND EL ROAD
WHITEHORSE, Y.T.
PHONE 668-2424 - 668-2425
Telex 036-8-357

CONTRACT DIAMOND DRILLING

VANCOUVER OFFICE:
3 - 425 HOWE STREET
VANCOUVER, B.C.
PHONE 687-4634

November 2, 1973,

Whitehorse Copper Mines Limited,
Box 4280,
Whitehorse, Yukon Territory.

Summary of drilling and drilling costs for September and October 1973:

Drilling (3550 ft. BQ)		\$23,411.90
Company time (299 hrs.)		\$ 2,167.75
Equipment rental (4 hrs.)		\$ 25.40
Casing per ft. (151 ft. BW) (4 ft. NW)		\$ 1,262.15
Tractor D-8 (16 hrs.)		\$ 416.00
Canamet Sales Ltd. (Invoice # 2280)		\$ 495.80
Canadian Propane Gas & Oil Ltd. (Invoice # 290711)		\$ 72.00
	7.7 (" # 291062)	\$ 92.75
	(" # 291118)	\$ 38.25
	(" # 291151)	\$ 24.00
	(" # 291208)	\$ 63.75
<i>BC 7.72 / 5 +</i>		
<i>CP 2.83 / 5 +</i>		
<i>WIC 8.12 / 5 +</i>		
<i>LC-114 45° 11259.85</i>		
<i>6-17 12904.70</i>		
<i>BICOB 6-37 3903.20</i>		
		<hr/>
		\$28,069.75

(Footage on hole #LC-114 45° charged at \$6.40 per ft. not at \$6.90 as per contract. Tractor D-8 charged at D-6 rate.)

BC 7.72 / 5 +
CP 2.83 / 5 +
WIC 8.12 / 5 +

*Given to
10
9 NOV*

NOV 4 1973

E. Caron Diamond Drilling Limited

HEAD OFFICE:
7 ROUND EL ROAD
WHITEHORSE, Y.T.
PHONE 668-2424 - 668-2425

CONTRACT DIAMOND DRILLING

VANCOUVER OFFICE:
3 - 425 HOWE STREET
VANCOUVER, B.C.
PHONE 687-4634

November 2, 1973,

Whitehorse Copper Mines Limited:

Footage:

Hole #LC-114	45°			
		0 ft. to 500 ft. = 500 ft. @ \$6.40 per ft.	\$ 3,200.00	} 7.72 / 5+
		500 ft. to 814 ft. = 314 ft. @ \$7.50 per ft.	\$ 2,355.00	
Hole #LC-115	50°			
		0 ft. to 500 ft. = 500 ft. @ \$6.40 per ft.	\$ 3,200.00	} 7.72 / 5+
		500 ft. to 645 ft. = 145 ft. @ \$7.50 per ft.	\$ 1,087.50	
Hole #CP-68	73°			
		0 ft. to 500 ft. = 500 ft. @ \$6.40 per ft.	\$ 3,200.00	} 7.83 / 5+
		500 ft. to 527 ft. = 27 ft. @ \$7.50 per ft.	\$ 202.50	
Hole #CP-69	64°			
		0 ft. to 478 ft. = 478 ft. @ \$6.40 per ft.	\$ 3,059.20	} 7.83 / 5+
		500 ft. to 643 ft. = 143 ft. @ \$7.50 per ft.	\$ 1,072.50	
Hole #BLC-44	58°			
		0 ft. to 443 ft. = 443 ft. @ \$6.40 per ft.	\$ 2,835.20	} 8.82

\$23,411.90

E. Caron Diamond Drilling Limited

HEAD OFFICE:
7 ROUNDEL ROAD
WHITEHORSE, Y.T. Y1A 3H3
PHONE 668-2424 - 668-2425
Telex 036-8-337

CONTRACT DIAMOND DRILLING

VANCOUVER OFFICE:
3 - 425 HOWE STREET
VANCOUVER, B.C.
PHONE 687-4634

December 6, 1973,

Whitehorse Copper Mines Limited,
Box 4280,
Whitehorse, Yukon Territory.

Summary of drilling and drilling costs for November 1973:

Drilling (BQ-1333 ft.) (NQ-455 ft.)	\$13,421.20
Company time (330 hrs.)	\$ 2,392.50
Equipment rental (47 hrs.)	\$ 298.45
Casing per ft. (NW-90 ft.) (HW-46 ft.)	\$ 1,300.00
Tractor D-6 (15 hrs.)	\$ 390.00
Canamet Sales Ltd. (Invoice # 2306)	\$ 360.00
NQ Core Boxes (25 boxes @ \$4.05 per box)	\$ 101.25
Canadian Propane Gas & Oil Ltd. (Invoice # 291249)	\$ 39.75
(" # 291289)	\$ 76.50
(" # 291335)	\$ 17.40
(" # 291364)	\$ 79.50
(" # 291393)	\$ 93.30
(" # 291450)	\$ 106.00
(" # 291463)	\$ 88.20
(" # 291503)	\$ 76.50
(" # 291542)	\$ 8.70
(" # 291559)	\$ 78.00
(" # 291603)	\$ 76.50
McCrae Inn Ltd. (Invoice # 32267-propane)	\$ 26.80

\$19,030.55

Value
\$ 11,898.76
acct # 638
310206
\$ 7131.79
acct # 6-37

Tenney
Dec 12th 73

Geology

total

13000 + 0
32
28
6,000 to
Dec 17

E. Caron Diamond Drilling Limited

Annex A - 5

HEAD OFFICE:
7 ROUNDEL ROAD
WHITEHORSE, Y.T.
PHONE 668-2424 - 668-2425

CONTRACT DIAMOND DRILLING

VANCOUVER OFFICE:
3 - 425 HOWE STREET
VANCOUVER, B.C.
PHONE 687-4634

December 5, 1973,

Whitehorse Copper Mines Limited:

Footage:

Hole #BLC-44 58°

BQ	443 ft.	to	500 ft.	=	57 ft.	@ \$6.40 per ft.	\$ 364.80
BQ	500 ft.	to	807 ft.	=	307 ft.	@ \$7.50 per ft.	\$2,302.50

Hole #BLC-45 62°

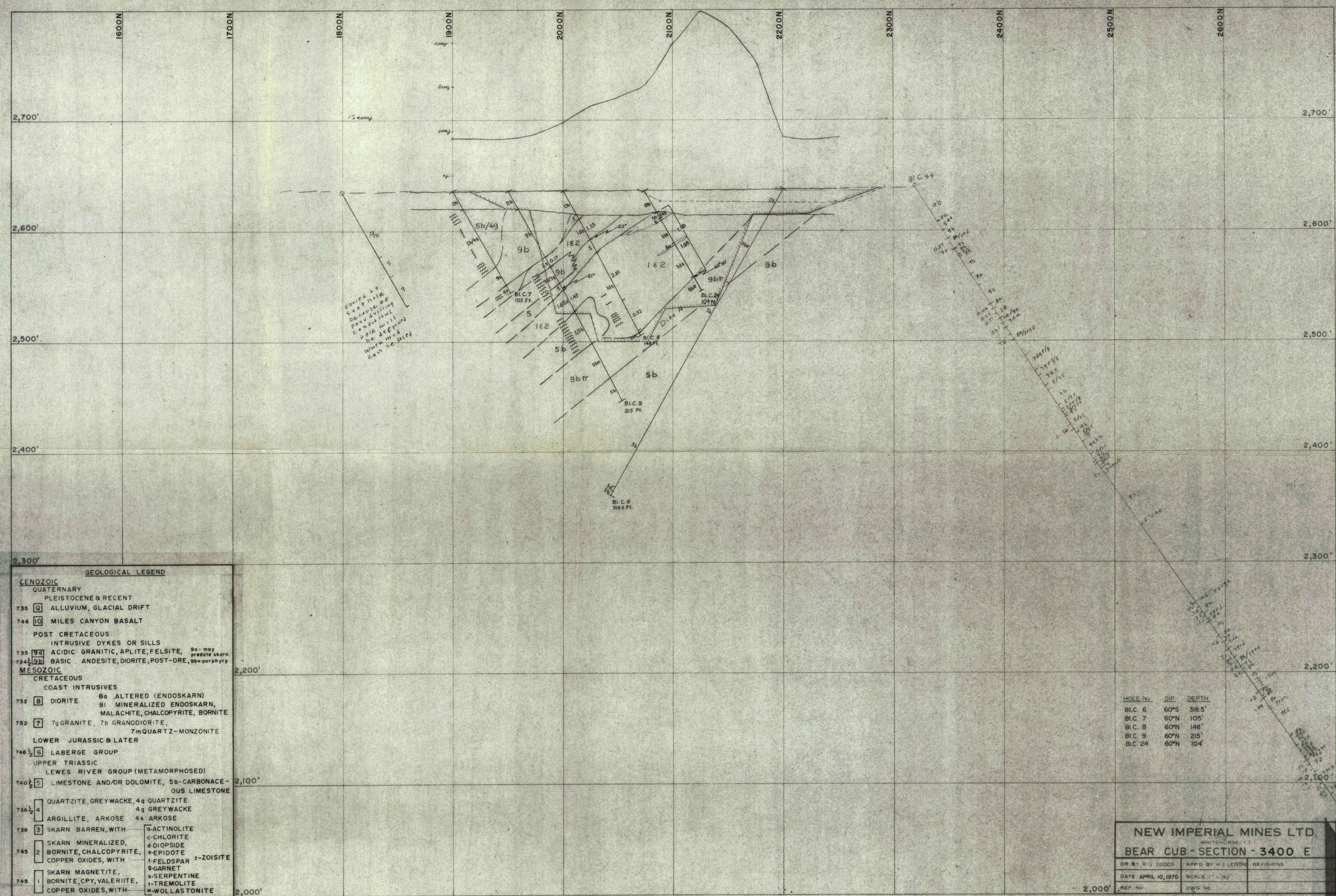
NQ	0 ft.	to	59 ft.	=	59 ft.	@ \$7.30 per ft.	\$ 430.70
BQ	59 ft.	to	128 ft.	=	69 ft.	@ \$6.40 per ft.	\$ 441.60

Hole #V-17 80°

NQ	0 ft.	to	396 ft.	=	396 ft.	@ \$7.30 per ft.	\$2,890.80
BQ	396 ft.	to	500 ft.	=	104 ft.	@ \$6.40 per ft.	\$ 665.60
BQ	500 ft.	to	1000 ft.	=	500 ft.	@ \$7.50 per ft.	\$3,750.00
BQ	1000 ft.	to	1296 ft.	=	296 ft.	@ \$8.70 per ft.	\$2,575.20

3539.60

\$13,421.20



GEOLOGICAL LEGEND

- CENOZOIC**
 QUATERNARY
 PLEISTOCENE & RECENT
 735 [Q] ALLUVIUM, GLACIAL DRIFT
 746 [10] MILES CANYON BASALT
 POST CRETACEOUS
 INTRUSIVE DYKES OR SILLS
 755 [9a] ACIDIC GRANITIC, APLITE, FELSITE, 9a - may pre-date skarn
 734 [9b] BASIC ANDESITE, DIORITE, POST-ORE, 9b - porphyry
- MESOZOIC**
 CRETACEOUS
 COAST INTRUSIVES
 752 [8] DIORITE 8a ALTERED (ENDOSKARN)
 81 MINERALIZED ENDOSKARN, MALACHITE, CHALCOPYRITE, BORNITE
 752 [7] 7g GRANITE, 7b GRANODIORITE, 7m QUARTZ-MONZONITE
 LOWER JURASSIC & LATER
 746 1/2 [6] LABERGE GROUP
 UPPER TRIASSIC
 LEWES RIVER GROUP (METAMORPHOSED)
 740 1/2 [5] LIMESTONE AND/OR DOLOMITE, 5b-CARBONACEOUS LIMESTONE
- 736 1/2 [4] QUARTZITE, GREYWACKE, 4q QUARTZITE
 4g GREYWACKE
 ARGILLITE, ARKOSE 4k ARKOSE
 738 [3] SKARN BARREN, WITH
 a-ACTINOLITE
 c-CHLORITE
 d-DIOPSIDE
 e-EPIDOTE
 f-FELDSPAR z-ZOISITE
 745 [2] SKARN MINERALIZED, BORNITE, CHALCOPYRITE, COPPER OXIDES, WITH
 g-GARNET
 s-SERPENTINE
 t-TREMOLITE
 745 [1] SKARN MAGNETITE, BORNITE, CPY, VALERIITE, COPPER OXIDES, WITH
 w-WOLLASTONITE

NEW IMPERIAL MINES LTD.
 WHITEHORSE, V.T.
BEAR CUB - SECTION - 3400 E

DR BY R.G. DODDS	APP'D BY H.J. LEISTRA	REVISIONS
DATE APRIL 10, 1970	SCALE 1" = 40'	
REF. No.	DWG. No.	

TABLE OF CONTENTS



Introduction

General Geology

Results of Diamond Drilling

References

Accompanying Diagrams

Figure 1

Location Map

Figure 2

General Geology Surface Map

Figure 3

Table of Formations

Figure 4

Section 7550 E (CP 68)

Figure 5

Section 7250 E (CP 69)

Figure 6

Section 7900 E (CP 70)

Annex A

Vouchers of Expenditures

Page

1

1

2

Located

In Report

In Report

In Report

In Report

In Report

In Pocket

In Pocket

In Pocket

In Pocket

091112

INTRODUCTION

This report describes the results of a diamond drilling program carried out by Caron Diamond Drilling Co. for Whitehorse Copper Mines Ltd. on the Cowley Park mineralized zone. O.C. + 14-26, 1973

The zone is located ten miles south east of Whitehorse and is accessible by 3/4 miles of bush road from mile 2.2 of the Carcross road. Figure 1 is a sketch of the location of drilling with relation to claim boundaries.

GENERAL GEOLOGY

The Cowley Park zone is located at the south east extremity of the presently defined limit of the Whitehorse Copper belt.

Disseminated bornite, chalcopyrite and molybdenite occur in a garnet - dropside skarn developed along a quartz diorite - limestone contact. Figure 2 is an interpretation of the surface geology of the area. Figure 3 is a table of rock formations. Selected references to the general geology of the area are listed at the end of this report.

RESULTS OF DIAMOND DRILLING

Three holes totaling 1648 feet BQ were drilled to test the down dip extension of the Cowley Park ore zone.

Although mineralization was obtained in each hole the grade was uneconomic and the estimate of ore reserves (currently one million tons at 0.9% cu.) was not improved. Results of the holes are plotted on figure 4, 5 and 6.

EXPENDITURES

Drilling conditions in the area were good. The cost per foot not including assaying, logging, or supervision by Whitehorse Copper was \$7.83 per foot for a total drilling cost of \$12,904.20.

Annex A is a list of expenditures incurred on the project.

- 2 -

Respectfully Submitted,
WHITEHORSE COPPER MINES LTD.

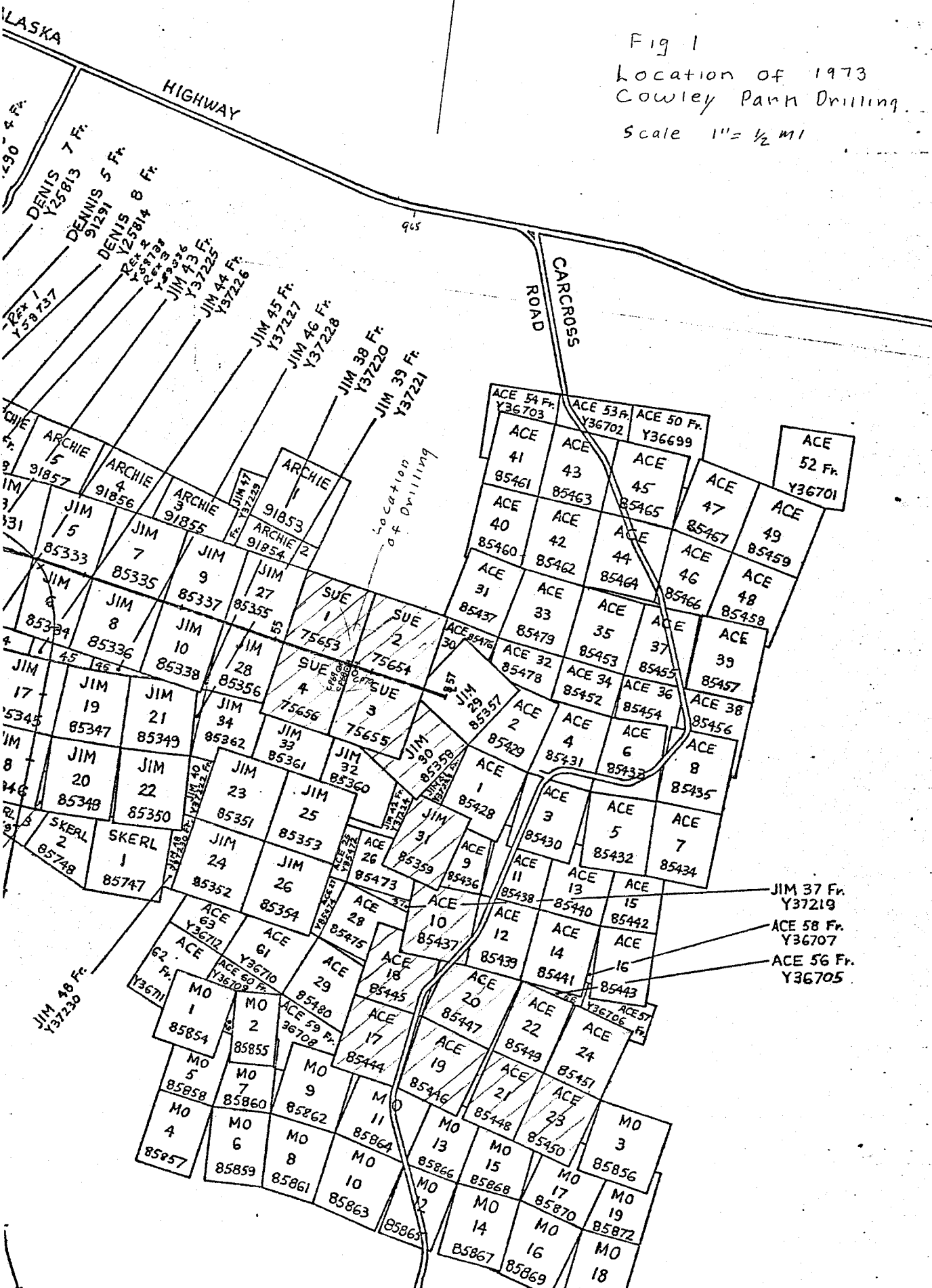
R.A. Hureau,
Geologist.

References:

- Wheeler, J.O. - 1961 Whitehorse Map Area
Yukon Territory Geology Survey Canada
Mem 312
- Kindle, E.D. - Copper and Iron Resources
of the Whitehorse Copper Belt
Geology Survey Canada
Paper 63-41



Fig 1
Location of 1973
Cowley Park Drilling
Scale 1" = 1/2 MI



ALASKA

HIGHWAY

965

964

963

962

961

960

959

958

957

956

955

954

953

952

951

950

949

948

947

946

945

944

943

942

941

940

939

938

937

936

935

934

933

932

931

930

929

928

927

926

925

924

923

922

921

920

919

918

917

916

915

914

913

912

911

910

909

908

907

906

905

904

903

902

901

900

899

898

897

896

895

894

893

892

891

890

889

888

887

886

885

884

883

882

881

880

879

878

877

876

875

874

873

872

871

870

869

868

867

866

865

864

863

862

861

860

859

858

857

856

855

854

853

852

851

850

849

848

847

846

845

844

843

842

841

840

839

838

837

836

835

834

833

832

831

830

829

828

827

826

825

824

823

822

821

820

819

818

817

816

815

814

813

812

811

810

809

808

807

806

805

804

803

802

801

800

799

798

797

796

795

794

793

792

791

790

789

788

787

786

785

784

783

782

781

780

779

778

777

776

775

774

773

772

771

770

769

768

767

766

765

764

763

762

761

760

759

758

757

756

755

754

753

752

751

750

749

748

747

746

745

744

743

742

741

740

739

738

737

736

735

734

733

732

731

730

729

728

727

726

725

724

723

722

721

720

719

718

717

716

715

714

713

712

711

710

709

708

707

706

705

704

703

702

701

700

699

698

697

696

695

694

693

692

691

690

689

688

687

686

685

684

683

682

681

680

679

678

677

676

675

674

673

672

671

670

669

668

667

666

665

664

663

662

661

660

659

658

657

656

655

654

653

652

651

650

649

648

647

646

645

644

643

642

641

640

639

638

637

636

635

634

633

632

631

630

629

628

627

626

625

624

623

622

621

620

619

618

617

616

615

614

613

612

611

610

609

608

607

606

605

604

603

602

601

600

599

598

597

596

595

594

593

592

591

590

589

588

587

586

585

584

583

582

581

580

579

578

577

576

575

574

573

572

571

570

569

568

567

566

565

564

563

562

561

560

559

558

557

556

555

554

553

552

551

550

549

548

547

546

545

544

543

542

541

540

539

538

537

536

535

534

533

532

531

530

529

528

527

526

525

524

523

522

521

520

519

518

517

516

515

514

513

512

511

510

509

508

507

506

505

504

503

502

501

500

499

498

497

496

495

494

493

492

491

490

489

488

487

486

485

484

483

482

481

480

479

478

477

476

475

474

473

472

471

470

469

468

467

466

465

464

463

462

461

460

459

458

457

456

455

454

453

452

451

450

449

448

447

446

445

444

443

442

441

440

439

438

437

436

435

434

433

432

431

430

429

428

427

426

425

424

423

422

421

420

419

418

417

416

415

414

413

412

411

410

409

408

407

406

405

404

403

402

401

400

399

398

397

396

395

394

393

392

391

390

389

388

387

386

385

384

383

382

381

380

379

378

377

376

375

374

373

372

371

370

369

368

367

366

365

364

363

362

361

360

359

358

357

356

355

354

353

352

351

350

349

348

347

346

345

344

343

342

341

340

339

338

337

336

335

334

333

332

331

330

329

328

327

326

325

324

323

322

321

320

319

318

317

316

315

314

313

312

311

310

309

308

307

306

305

304

303

302

301

300

299

298

297

296

295

294

293

292

291

290

289

288

287

286

285

284

283

282

281

280

279

278

277

276

275

274

273

272

271

270

269

268

267

266

265

264

263

262

261

260

259

258

257

256

255

254

253

252

251

250

249

248

247

246

245

244

243

242

241

240

239

238

237

236

235

234

233

232

231

230

229

228

227

226

225

224

223

222

221

220

219

218

217

216

215

214

213

212

211

210

209

208

207

206

205

204

203

202

201

200

199

198

197

196

195

194

193

192

191

190

189

188

187

186

185

184

183

182

181

180

179

178

177

176

175

174

173

172

171

170

169

168

167

166

165

164

163

162

161

160

159

158

157

156

155

154

153

152

151

150

149

148

147

146

145

144

143

142

141

140

139

138

137

136

135

134

133

132

131

130

129

128

127

126

125

124

123

122

121

120

119

118

117

116

115

114

113

112

111

110

109

108

107

106

105

104

103

102

101

100

99

98

97

96

95

94

93

92

91

90

89

88

87

86

85

84

83

82

81

80

79

78

77

76

75

74

73

72

71

70

69

68

67

66

65

64

63

62

61

60

59

58

57

56

55

54

53

52

51

50

49

48

47

46

45

44

43

42

41

40

39

38

37

36

35

34

33

32

31

30

29

28

27

26

25

24

23

22

21

20

19

18

17

16

15

14

13

12

11

10

9

8

7

6

5

4

3

2

1

0

JIM 37 Fr.
Y37219

ACE 58 Fr.
Y36707

ACE 56 Fr.
Y36705

GEOLOGICAL LEGEND

CENOZOIC

QUATERNARY

PLEISTOCENE & RECENT

735 **Q** ALLUVIUM, GLACIAL DRIFT

746 **10** MILES CANYON BASALT

POST CRETACEOUS

INTRUSIVE DYKES OR SILLS

755 **9a** ACIDIC GRANITIC, APLITE, FELSITE, 9a - may predate skarn

734 **9b** BASIC ANDESITE, DIORITE, POST-ORE, 9b - porphyry

MESOZOIC

CRETACEOUS

COAST INTRUSIVES

752 **8** DIORITE **8a** ALTERED (ENDOSKARN)
8i MINERALIZED ENDOSKARN,
MALACHITE, CHALCOPYRITE, BORNITE

752 **7** **7g** GRANITE, **7b** GRANODIORITE,
7m QUARTZ-MONZONITE

LOWER JURASSIC & LATER

746 **1/2** **6** LABERGE GROUP

UPPER TRIASSIC

LEWES RIVER GROUP (METAMORPHOSED)

740 **1/2** **5** LIMESTONE AND/OR DOLOMITE, **5b**-CARBONACEOUS LIMESTONE

736 **1/2** **4** QUARTZITE, GREYWACKE, **4g** QUARTZITE
4g GREYWACKE
ARGILLITE, ARKOSE **4k** ARKOSE

738 **3** SKARN BARREN, WITH.....
3 SKARN MINERALIZED,
745 **2** BORNITE, CHALCOPYRITE,
COPPER OXIDES, WITH.....
745 **1** SKARN MAGNETITE,
BORNITE, CPY, VALERIITE,
COPPER OXIDES, WITH.....

- a**-ACTINOLITE
- c**-CHLORITE
- d**-DIOPSIDE
- e**-EPIDOTE
- f**-FELDSPAR
- g**-GARNET
- s**-SERPENTINE
- t**-TREMOLITE
- w**-WOLLASTONITE
- z**-ZOISITE

E. Caron Diamond Drilling Limited

Annex A - 1 DD-22

HEAD OFFICE:
7 ROUND EL ROAD
WHITEHORSE, Y.T.
PHONE 668-2424 - 668-2425
Telex 036-8-337

CONTRACT DIAMOND DRILLING

VANCOUVER OFFICE:
3 - 425 HOWE STREET
VANCOUVER, B.C.
PHONE 687-4634

November 2, 1973,

Whitehorse Copper Mines Limited,
Box 4280,
Whitehorse, Yukon Territory.

RECEIVED
NOV 3 - 1973

Summary of drilling and drilling costs for September and October 1973:

Drilling (3550 ft. BQ) ✓		\$23,411.90 ✓
Company time (299 hrs.) ✓ x 7.25		\$ 2,167.75 ✓
Equipment rental (4 hrs.) ✓ @ 6.35		\$ 25.40 ✓
Casing per ft. (151 ft. BW) (4 ft. NW) x 8.10 ✓		\$ 1,262.15 ✓
Tractor D-8 (16 hrs.) ✓ @ 26.00		\$ 416.00 ✓
Canamet Sales Ltd. (Invoice # 2280) ✓		\$ 495.80 ✓
Canadian Propane Gas & Oil Ltd. (Invoice # 290711) ✓		\$ 72.00 ✓
(" # 291062) ✓		\$ 92.75 ✓
(" # 291118) ✓		\$ 38.25 ✓
(" # 291151) ✓		\$ 24.00 ✓
(" # 291208) ✓		\$ 63.75 ✓
		290.75
		<hr/>
		\$28,069.75 ✓

11' x 7.85
10 x 8.90

Big Chief
Acct # 6-16 \$ 11,259.85
Cowley Park
Acct # 6-17 12,909.70
Black Cob South
Acct # 6-37 3,905.20
\$28,069.75

(Footage on hole #LC-114 45° charged at \$6.40 per ft. not at \$6.90 as per contract. Tractor D-8 charged at D-6 rate.)

\$ 7.91 / ft

OK to Pay
J. [Signature]

[Handwritten mark]

E. Caron Diamond Drilling Limited

Annex 4 - 2

HEAD OFFICE:
7 ROUNDEL ROAD
WHITEHORSE, Y.T.
PHONE 668-2424 - 668-2425

CONTRACT DIAMOND DRILLING

VANCOUVER OFFICE:
3 - 425 HOWE STREET
VANCOUVER, B.C.
PHONE 687-4634

November 2, 1973,

Whitehorse Copper Mines Limited:

Footage:

Hole #LC-114 45°

0 ft. to 500 ft. = 500 ft. @ \$6.40 per ft. \$ 3,200.00

500 ft. to 814 ft. = 314 ft. @ \$7.50 per ft. \$ 2,355.00

Hole #LC-115 50°

0 ft. to 500 ft. = 500 ft. @ \$6.40 per ft. \$ 3,200.00

500 ft. to 645 ft. = 145 ft. @ \$7.50 per ft. \$ 1,087.50

Hole #CP-68 73°

0 ft. to 500 ft. = 500 ft. @ \$6.40 per ft. \$ 3,200.00

500 ft. to 527 ft. = 27 ft. @ \$7.50 per ft. \$ 202.50

Hole #CP-69 64°

0 ft. to 478 ft. = 478 ft. @ \$6.40 per ft. \$ 3,059.20

Hole #CP-70 61°

0 ft. to 500 ft. = 500 ft. @ \$6.40 per ft. \$ 3,200.00

500 ft. to 643 ft. = 143 ft. @ \$7.50 per ft. \$ 1,072.50

Hole #BLC-44 58°

0 ft. to 443 ft. = 443 ft. @ \$6.40 per ft. \$ 2,835.20

} 7.77
#1

} 5217
#18
143
1643
7.83
#1

} 8.82

443

\$23,411.90

TO THE
 TORONTO-DOMINION BANK
 WHITEHORSE, YUKON

CHEQUE ACCOUNT

Annex A - 3

DATE November 15, 1973

PAY

\$ 28,069.75

WHITEHORSE COPPER MINES LTD.

TO THE
 ORDER
 OF

E. Caron Diamond Drilling Limited,
 7 Roundel Road,
 Whitehorse, Y.T.

PER _____

PER _____

NOT NEGOTIABLE

WHITEHORSE COPPER MINES LTD.

DATE	INVOICE No.	AMOUNT	DISCOUNT	DATE	INVOICE No.	AMOUNT	DISCOUNT
Nov. 15/73		\$ 28,069.75	201				

VOUCHERS PAYABLE

CHARGE	ACCOUNT No.	DR.	CR.
	201	\$ 28,069.75	

VOUCHER ENTERED	APPROVED FOR PAYMENT	V.O. No.
-----------------	----------------------	----------

LC

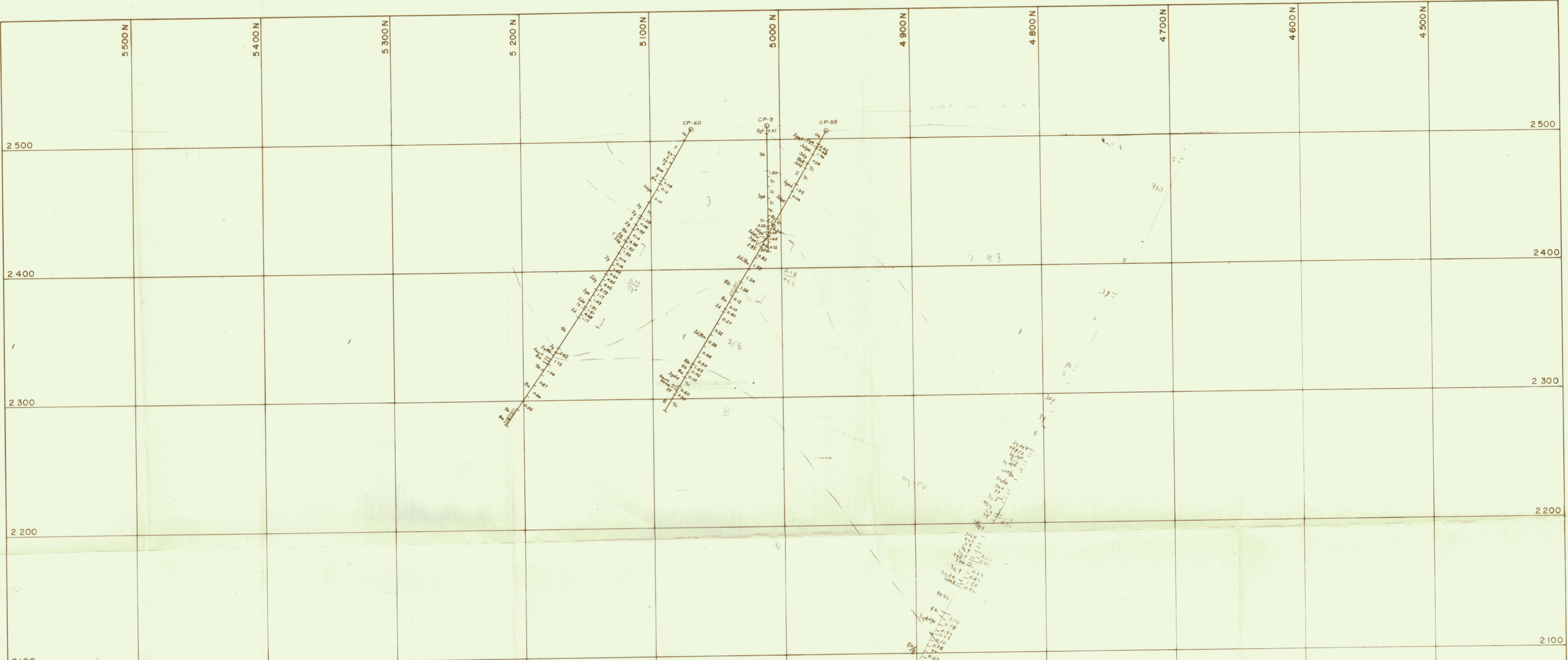
Drilling	# 6400		
	3942.50	# 9842.00	
Co time	90 x \$7.25	652.50	
Mach rental	4 x 6.35	25.40	
Casing	13 x 8.90 39 x 7.85 4 x 8.70	} 456.65	
Tractor	3 x \$26.		78.00
Core boxes			205.30
Total		<u># 11,259.85</u>	

CP

Drilling	# 9459.20	
	1275.00	10734.20
Co time	141 x 7.25	1022.25
Casing	52 x 7.85 } 7 x 8.90 }	} 470.50
Tractor	9 x \$26.00	
Core boxes		231.00
Propane		# 212.25
Total		<u>12904.20</u>

BIC

Drilling		# 2835.20
Co time	68 x 7.25	493.00
Casing		335.00
Tractor	4 x \$26.	104.00
Core boxes		59.50
Propane		# 78.50
Total		<u># 3,909.20</u>
28069.25		



- GEOLOGICAL LEGEND**
- CENOZOIC**
 QUATERNARY
 PLEISTOCENE & RECENT
 735 [Q] ALLUVIUM, GLACIAL DRIFT
 746 [10] MILES CANYON BASALT
- POST CRETACEOUS
 INTRUSIVE DYKES OR SILLS
 755 [9a] ACIDIC GRANITIC, APLITE, FELSITE, 9a - may predate skarn
 734 1/2 [9b] BASIC ANDESITE, DIORITE, POST- ORE 9b - porphyry
- MESOZOIC**
 CRETACEOUS
 COAST INTRUSIVES
 752 [8] DIORITE 8a ALTERED (ENDOSKARN)
 8i MINERALIZED ENDOSKARN,
 MALACHITE, CHALCOPYRITE, BORNITE
 752 [7] 7g GRANITE, 7b GRANODIORITE.
 7m QUARTZ - MONZONITE
- LOWER JURASSIC & LATER
 746 1/2 [6] LABERGE GROUP
 UPPER TRIASSIC
 LEWES RIVER GROUP (METAMORPHOSED)
 740 1/2 [5] LIMESTONE AND/OR DOLOMITE, 5b- CARBONACE-
 OUS LIMESTONE
- 736 1/2 [4] QUARTZITE, GREYWACKE, 4q QUARTZITE
 4g GREYWACKE
 4k ARKOSE
- 738 [3] SKARN BARREN, WITH a - ACTINOLITE
 c - CHLORITE
 d - DIOPSIDE
 745 [2] SKARN MINERALIZED, e - EPIDOTE
 BORNITE, CHALCOPYRITE, f - FELDSPAR
 COPPER OXIDES, WITH g - GARNET z - ZOISITE
 745 [1] SKARN MAGNETITE, h - SERPENTINE
 BORNITE, CPY, VALERIITE, i - TREMOLITE
 COPPER OXIDES, WITH w - WOLLASTONITE

HOLE No.	DIP	DEPTH
C.P. - 9	90°	98'
C.P. - 60	60°N	271'
C.P. - 59	60°N	250'
C.P. - 69	67°N	478'

FIG 4

NEW IMPERIAL MINES LTD.
 WHITEHORSE, Y.T.
COWLEY PARK SECTION 7 250 E

DR BY I. SCHMITT	APP'D BY D. TENNEY	REVISIONS
DATE MAY 14, 1971	SCALE 1" = 40'	
REF No	DWG No	



GEOLOGICAL LEGEND

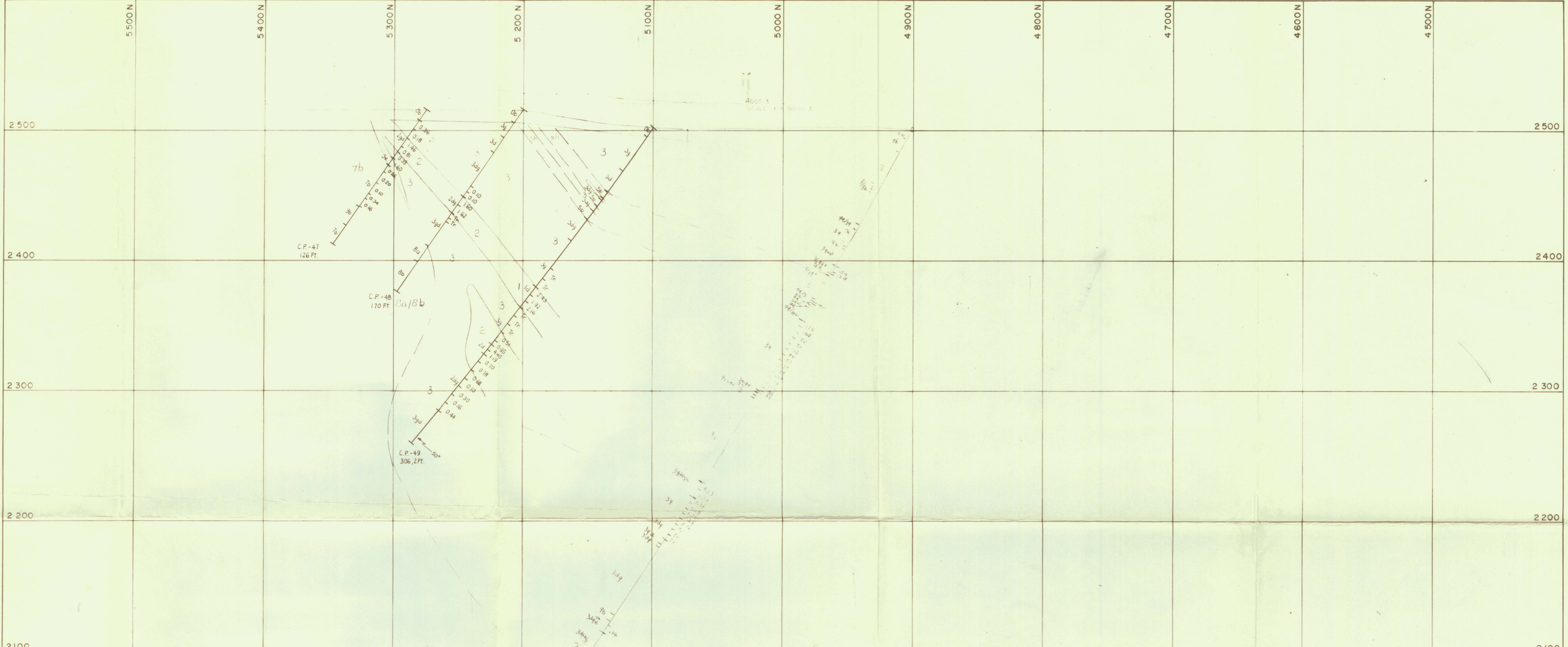
CENOZOIC
QUATERNARY
PLEISTOCENE & RECENT
 735 [Q] ALLUVIUM, GLACIAL DRIFT
 746 [10] MILES CANYON BASALT
POST CRETACEOUS
INTRUSIVE DYKES OR SILLS
 755 [9a] ACIDIC GRANITIC, APLITE, FELSITE, 9a - may predate skarn
 734 [9b] BASIC ANDESITE, DIORITE, POST-ORE 9b - porphyry
MESOZOIC
CRETACEOUS
COAST INTRUSIVES
 752 [8] DIORITE 8a ALTERED (ENDOSKARN)
 8i MINERALIZED ENDOSKARN, MALACHITE, CHALCOPYRITE, BORNITE
 752 [7] 7g GRANITE, 7b GRANODIORITE, 7m QUARTZ - MONZONITE
LOWER JURASSIC & LATER
 746 1/2 [6] LABERGE GROUP
UPPER TRIASSIC
LEWES RIVER GROUP (METAMORPHOSED)
 740 1/2 [5] LIMESTONE AND/OR DOLOMITE, 5b - CARBONACEOUS LIMESTONE

736 1/2 [4] QUARTZITE, GREYWACKE, 4q QUARTZITE, 4g GREYWACKE, 4k ARKOSE
 735 [3] SKARN BARREN, WITH a - ACTINOLITE, c - CHLORITE, d - DIOPSIDE, e - EPIDOTE, f - FELDSPAR, g - GARNET, z - ZOISITE
 745 [2] SKARN MINERALIZED, BORNITE, CHALCOPYRITE, COPPER OXIDES, WITH s - SERPENTINE, t - TREMOLITE, w - WOLLASTONITE
 744 [1] SKARN MAGNETITE, BORNITE, COPPER, VALERITE, COPPER OXIDES, WITH

HOLE No.	DIP	DEPTH
C.P. -63	45°N	320'
C.P. -64	45°N	270'
C.P. 68	72°	527'

NEW IMPERIAL MINES LTD.
 WHITEHORSE YT
COWLEY PARK SECTION 7 550 E

DR BY I. SCHMITT	APP'D BY D. TENNEY	REVISIONS
DATE MAY 14, 1971	SCALE 1" = 40'	
REF. No.	DWG. No.	



GEOLOGICAL LEGEND

CENOZOIC
 QUATERNARY
 PLEISTOCENE & RECENT
 735 [Q] ALLUVIUM, GLACIAL DRIFT
 746 [10] MILES CANYON BASALT

POST CRETACEOUS
 INTRUSIVE DYKES OR SILLS
 755 [9a] ACIDIC GRANITIC, APLITE, FELSITE, 9a - may predate skarn
 734 [9b] BASIC ANDESITE, DIORITE, POST-ORE 9b - porphyry

MESOZOIC
 CRETACEOUS
 COAST INTRUSIVES
 752 [8] DIORITE 8a ALTERED (ENDOSKARN)
 8i MINERALIZED ENDOSKARN, MALACHITE, CHALCOPYRITE, BORNITE
 752 [7] 7g GRANITE, 7b GRANODIORITE, 7m QUARTZ - MONZONITE

LOWER JURASSIC & LATER
 746 1/2 [6] LABERGE GROUP
 UPPER TRIASSIC
 LEWES RIVER GROUP (METAMORPHOSED)
 740 1/2 [5] LIMESTONE AND/OR DOLOMITE, 5b - CARBONACEOUS LIMESTONE

736 1/2 [4] QUARTZITE, GREYWACKE, 4q QUARTZITE, 4g GREYWACKE, 4k ARKOSE
 735 [3] SKARN BARREN, WITH a - ACTINOLITE, c - CHLORITE, d - DIOPSIDE
 745 [2] SKARN MINERALIZED, BORNITE, CHALCOPYRITE, COPPER OXIDES, WITH e - EPIDOTE, f - FELDSPAR, g - GARNET, z - ZOISITE
 745 [1] SKARN MAGNETITE, BORNITE, CPY, VALERIITE, COPPER OXIDES, WITH s - SERPENTINE, t - TREMOLITE, w - WOLLASTONITE

HOLE No.	DIP	DEPTH
C.P.-47	55°N	126'
C.P.-48	55°N	170'
C.P.-49	55°N	306.2'
C.P.-70	61°N	644'

FIG 6

NEW IMPERIAL MINES LTD.
 WHITEHORSE Y.T.
COWLEY PARK SECTION 7 900 E

DR BY I. SCHMITT	APP'D BY H. LEISTRA	REVISIONS
DATE	SCALE 1" = 40'	
REF No	DWG No	