

NEW IMPERIAL MINES LIMITED

MINING DIVISION - WHITEHORSE,
YUKON TERRITORY

Hole No. CP 57 Page No. 2

FOOTAGE			ROCK CLASSIFICATION EPID. DIOP. GARN. SERP. QTZ/SIL. ACTINO. TREMO. CHLO. CRYSTALLINE. SHEARING. VEINS. FRACTURING. FOLIATION. GRAIN SIZE. TEXTURE	MINERALIZATION		ASSAY DATA						
From	To			TYPE	%	SAMPLE NO.	WIDTH	RECOV.	%CU	%FE	MOLY	AU/AG
			Sample 57 - 69.5			8705	12.5		0.32			
69.5	73.5	2g	2g garnet skarn disseminated cp bo Core 40° 35'	cp bo	.75							
			Sample 69.5 - 73.5			8706	4.0		1.79			
73.5	82.0	32g/25	white - pink altered diorite disseminated cp	cp	12							
82.0	88.9	9b	Sample 73.5 - 82.0 dark grey basic dyke upper ct 40° lower ct 70°			8707	8.5		0.36			
			Sample 82.0 - 88.9			8708	6.9		Tr			
88.9	124.5	80g/15	wh to pink altered diorite + traces cp		2.7							
			Sample 88.9 - 96.9			8709	10.0		0.20			
			96.9 - 108.9			8710	10.0		0.16			
			108.9			8711	10.0		0.10			
			118.9 - 124.5			8712	5.6		0.14			

NEW IMPERIAL MINES LIMITED
MINING DIVISION - WHITEHORSE
YUKON TERRITORY

Hole No. CP57 Page No. 3

FOOTAGE			ROCK CLASSIFICATION EPID. DIOP. GARN. SERP. QTZ/SIL. ACTINO TREMO. CHLO. CRYSTALLINE. SHEARING. VEINS. FRACTURING. FOLIATION. GRAIN SIZE. TEXTURE	MINERALIZATION		ASSAY DATA						
From	To			TYPE	%	SAMPLE NO.	WIDTH	RECOV.	%CU	%FE	MOLY	AU/AG
124.5	138.0	9b	dark grey basic dyke 6" alt'd diorite @ 128 3" " " @ 134. Core L's gen 45°									
138.0	148	3/9a	med grey - pink epidote low dip towards lower ct Sample 138-148			8721	10'	0.32				
148.0	149.0	9b	basic dyke lower ct + 70°									
149.0	153.4	8/9b	diorite bands basic dyke to 3"									
153.4	160	3F	med grey diorite, red sed's banding gen 60° traces cp Sample 148-160			8722	12'	0.40				
160	164.8	8a	Fresh diorite lower ct + 20° Sample 160-164.8			8723	4.8'	0.14				
164.8	172	9b	basic dyke									
172	276	3a	Altered diorite 177-181 Core broken gauge, mud									

NEW IMPERIAL MINES LIMITED

MINING DIVISION - WHITEHORSE
YUKON TERRITORY

Hole No. CP57 Page No. 4

FOOTAGE		ROCK CLASSIFICATION EPID. DIOP. GARN. SERP. QTZ/SIL. ACTINO TREMO. CHLO. CRYSTALLINE. SHEARING. VEINS. FRACTURING. FOLIATION. GRAIN SIZE. TEXTURE	MINERALIZATION		ASSAY DATA							
From	To		TYPE	%	SAMPLE NO.	WIDTH	RECOV.	%CU	%FE	MOLY	AU/AG	INSOL
		198.5 - 199.2 Vf9 basic dyke										
		255 - 256.5 9b dyke										
276.0		Foot of hole										
		Sample 172 - 182			8713	10'		0.10				
		187 - 192			8714	10'		0.08				
		192 - 202			8715	10'		0.26				
		202 - 212			8716	10'		0.30				
		212 - 222			8717	10'		Tr				
		222 - 232			8718	10'		0.14				
		232 - 242			8719	10'		0.12				
		242 - 252			8720	10'		Tr				
		<u>Plotted</u>										

091118

NEW IMPERIAL MINES LIMITED
MINING DIVISION - WHITEHORSE
YUKON TERRITORY

DD-26

PROPERTY <u>CP</u>	Claim No. <u>SUE 1</u>	Strike <u>010°54' (NORTH)</u>	Lat. <u>5069 N</u>	Hole No. <u>CP 60</u>
Date <u>3 May</u> 19 <u>71</u>	Section No. <u>7250 E</u>	Dip collar <u>52°, 55° @ 200</u>	Dep. <u>7252 E</u>	Total Depth <u>271' BR</u>
Logged By <u>DT</u>	Plan No. _____	Level <u>SURFACE</u>	Elev. <u>2508 B</u>	Page No. <u>1 of 6</u>

FOOTAGE			ROCK CLASSIFICATION EPID. DIOP. GARN. SERP. QTZ/SIL. ACTINO. TREMO. CHLO. CRYSTALLINE. SHEARING. VEINS. FRACTURING. FOLIATION. GRAIN SIZE, TEXTURE	MINERALIZATION		ASSAY DATA						
From	To			TYPE	%CU	SAMPLE NO.	WIDTH	REC'D.	%CU	%FE	MOLY	AU/AG
0	9.5		overburden									
85	24.0	5	Wn & grey Ls Tr Py 60°									
24.0	26.3	9b	Basic dyke dk grey Fg cts upper 30°, lower 30°									
26.3	30.0	5	gy - wh Ls speck Cp	Cp	<.2							
300	30.9	9b	dk gy Fg dyke									
30.9	35.8	5	lt gy Ls banding 60°									
35.8	43.3	9b	Micro porphyritic ^{mag} dyke good chill cts 4.5' d									
43.3	46.0	5	Ls lt gy barren									
46.0	49.7	80	dioritic mafic microcline, orthoclase	Py	1.2%							
48.7	65.0	3dpc	diopside horn mineral garnet & Epidote + trace Cp, mo 57.5' Microcline Orthoclase, Anorthite	Cp 1.10	.25							

NEW IMPERIAL MINES LIMITED
 MINING DIVISION - WHITEHORSE
 YUKON TERRITORY

Hole No. 60 Page No. 2

FOOTAGE			ROCK CLASSIFICATION <small>EPID. DIOP. GARN. SERP. QTZ/SIL. ACTINO TREMO. CHLO. CRYSTALLINE. SHEARING. VEINS. FRACTURING. FOLIATION. GRAIN SIZE. TEXTURE</small>	MINERALIZATION		ASSAY DATA						
From	To			TYPE	%	SAMPLE NO.	WIDTH	RECOV.	%CU	%FE	MOLY	AU/AG
			Sample 43.7 - 46.7			8671	5.0	5	0.08			
			48.7 - 53.7			8672	5.0	5	0.12			
			53.7 - 65.0			8673	11.3	11.3	0.10			
65.0	77.5	36	Garnet Skarn white m. Mallesonite? Sample 65.0 - 77.5			8674	12.5		Tr			
77.5	79.6	29	Sample 77.5 - 79.6	cp, bo	.5							
79.6	85.0	5	grey ls tr py cp Sample 79.6 - 85.0	cp, py	4.2	8675	2.1		1.28			
						8676	5.4		0.06			
85.0	89.4	29	Garnet Skarn leached appearance Sample 85.0 - 89.4	cp, bo	1.5%							
89.4	97.0	70	Py dyke, contact 45° chilled, epiditized Sample 89.4 - 97.0			8677	4.4		0.11			
						8678	7.6		0.17			

NEW IMPERIAL MINES LIMITED
MINING DIVISION - WHITEHORSE
YUKON TERRITORY

Hole No. C.P.60 Page No. 3

FOOTAGE			ROCK CLASSIFICATION EPID. DIOP. GARN. SERP. QTZ/SIL. ACTINO TREMO. CHLO. CRYSTALLINE. SHEARING. VEINS. FRACTURING. FOLIATION. GRAIN SIZE. TEXTURE	MINERALIZATION		ASSAY DATA						
From	To			TYPE	%	SAMPLE NO.	WIDTH	Recov.	%CU	%FE	MOLY	AU/AG
97.0	99.0	29		cpbo	2%							
99.0	100	1		cp, po	7%							
			Sample 97 - 100			8679	3'	3'	4.38			
100	104.8	29	garnet skarn dissemb cp, + moly (o. 1)	cpbo, misc	.9							
104.8	105.0	1	magnetite skarn	apbo	7%							
105.0	111.2	29	Skarn, garnet diopside, tremoly	cpbo	.7%					1.7%		
111.2	130	29	Garnet skarn disseminated bo, ap, heavy moly									
			100 - 105.0			8680	5.0		1.92			
			Sample 105.0 - 111.2			8681	6.2		1.36			
			111.2 - 116.2			8682	5.0		0.14			
			116.2 - 121.2			8683	5.0		0.16			
			- 126.2			8684	5.0		1.59			
			126.2 - 130.0			8685	3.8		0.54			
			135			8686	5.0		4.65			
135			135 - 140			8687	5.0		4.45			
			140 - 144			8688	4.0		2.79			

FOOTAGE			ROCK CLASSIFICATION <small>EPID. DIOP. GARN. SERP. QTZ/SIL. ACTINO TREMO. CHLO. CRYSTALLINE. SHEARING. VEINS. FRACTURING. FOLIATION. GRAIN SIZE. TEXTURE</small>	MINERALIZATION		ASSAY DATA						
From	To			TYPE	%	SAMPLE NO.	WIDTH	RECOV.	%Cu	%FE	MOLY	AU/AG
			144 - 149									
			149 - 154									
130	144	2dg	rd country mineralized CP 1%	bo, CP	3%							
144	154	2gd		bo, CP	1%							
154	160	2gd		CP								
160	162	1S										
162	170	2d	med gy diopside skarn CP, bo, small bands 15' heavy CP	bo, CP	1%							
			Sample 154 - 160			8691	6.0	1.91				
			160 - 162			8692	2.0	1.51				
			162 - 167			8693	5.0	4.58				
			167 - 170			8694	3.0	1.17				
170	196.2	9b	Fg dkgy basic dyke upper at chilled @ 10° minor part white + 3g mineralization on joints CP 0° - 5°									

NEW IMPERIAL MINES LIMITED
 MINING DIVISION - WHITEHORSE
 YUKON TERRITORY

Hole No. CP 60 Page No. 5

FOOTAGE			ROCK CLASSIFICATION <small>EPID. DIOP. GARN. SERP. QTZ/SIL. ACTINO TREMO. CHLO. CRYSTALLINE. SHEARING VEINS. FRACTURING. FOLIATION. GRAIN SIZE. TEXTURE</small>	MINERALIZATION		ASSAY DATA						
From	To			TYPE	%	SAMPLE NO.	WIDTH	RECOV.	%CU	%FE	MOLY	AU/AG
178.2	201.5	29	Gabbro + Skarn disseminated bo & CP	CP bo	0.75							
201.5	205.0	29/b	Broken seck 208-214 Core leached mud 212-214	CP bo	0.5							
205.0	218.6	30	Clean diorite disseminated small a bo Broken ground, fault zone 207-216	bo gmo								
218.6	219.3	9b	Fine grained basid dyke C + S 75° 75°									
219.3	255.5	30	diorite min. mineralized f9 disseminated CP rare bo, core very blocky leached From 247 - 255.5 Sample 170 - 175 } 175 - 180 } 185 - 190 } 195 - 198.7 } 198.2 - 203 } 203 - 213 } 213 - 223 } 223 - 233 } 233 - 243 } 243 - 255.5 }	CP bo	0.3							
						8695	4.8	2.52				
						8696	10.0	1.73				
						8697	10.0	1.04				
						8698	10.0	0.87				
						8699	10.0	0.64				
						8700	12.5	0.56				

FOOTAGE			ROCK CLASSIFICATION <small>EPID. DIOP. GARN. SERP. QTZ/SIL. ACTINO TREMO CHLO. CRYSTALLINE SHEARING VEINS FRACTURING FOLIATION GRAIN SIZE TEXTURE</small>	MINERALIZATION		ASSAY DATA						
From	To			TYPE	%	SAMPLE NO.	WIDTH	RECOV.	%CU	%FE	MOLY	AU/AG
104.6	108.5	5	dark grey micaceous limestone 45°-60°									
108.5	128.6	5 1/2 ft	light grey limestone "stagnified" banding 45°-60°, lower cont act 60° 3" basic dyke @ 113' Sample 123 - 128.6			8752	5.0		0.00			
127.6	129.2	3/4 ft	shaly dissem vfq cp bo	cp bo	.4							
129.2	133.3	3/2 ft	shaly minor garnet dissem sulphides vfq cp bo Sample 127.6 - 133.3	cp bo	.5	8753	5.3	1'	0.07			
133.3	164.0	3 ft	Garnet shaly white mineral wollastonite? dissem fg cp rare bo Sample 133.3 - 146 146-0 - 156 156 - 164		.25	8754	12.7	10'	0.04			
						8755	10.0	10'	0.12			
						8756	10.0	8.5'	Tr			

FOOTAGE			ROCK CLASSIFICATION <small>EPID. DIOP. GARN. SERP. QTZ/SIL. ACTINO TREMO. CHLD. CRYSTALLINE SHEARING VEINS FRACTURING. FOLIATION. GRAIN SIZE. TEXTURE</small>	MINERALIZATION		ASSAY DATA						
From	To			TYPE	%	SAMPLE NO.	WIDTH	RECOY.	%CU	%FE	MOLY	AU. AG
164.0	188.0	3dg	Skarn pale grey minor epidate, traces of dissem c.p., flakes most @ 182	cp, born	.2							
			Sample 164 - 176 =			8757	12.0	12'	0.05			
			176 - 188 -			8758	12.0	12'	0.05			
188	198.4	9b	dark grey basic dyke vfg py dissem upper c + 45°, lower c + 60°	py	2%							
			Sample 188 - 198.4 =			8759	10.4	10.4	Tr			
198.4	219.2	3 1/2 dg	Skarn minor epidate dissem c.p. bo, throughout most @ 214.5 - 216	cp, born	.1							
			Sample 198 - 208 =			8760	9.6	10'	0.12			
			208 - 219.2 -			8761	11.2	10.5	0.89			
219.2	226	8se'	Skarn mid gy green, prominent Hbde 221 - 225 traces c.p. Sample 219.2 - 226 -									
						8762	6.8	6.5	0.12			

NEW IMPERIAL MINES LIMITED
 MINING DIVISION - WHITEHORSE
 YUKON TERRITORY

Hole No. 62 Page No. 4

FOOTAGE			ROCK CLASSIFICATION <small>EPID. DIOP. GARN. SERP. QTZ/SIL. ACTINO TREMO. CHLO. CRYSTALLINE SHEARING VEINS FRACTURING FOLIATION GRAIN SIZE, TEXTURE</small>	MINERALIZATION		ASSAY DATA						
From	To			TYPE	%	SAMPLE NO	WIDTH	RECOV.	%CU	%FE	MOLY	AU. AG
226	2290	298/1	Garnet skarn dissem cp bo Sample 226-229	cp bo	1%							
229.0	232.2	2es	Skarn, breccia zone 230-232 Calcite - skarn, dissem bo cp Sample 229-232.2	bo-cp	2%	8763	3.0	3.5	0.89			
						8764	3.2	3.2	0.62			
232.2	235	2fc	med gy skarn dissem cp bo mosz lower c + 70° Sample 232.2-235	cp, bo mosz	.5	8765	2.8	3.5	0.22			

NEW IMPERIAL MINES LIMITED
 MINING DIVISION - WHITEHORSE
 YUKON TERRITORY

Hole No. C.P. 62 Page No. 5

FOOTAGE			ROCK CLASSIFICATION <small>EPID. DIOP. GARN. SERP. QTZ/SIL. ACTINO TREMO. CHLO. CRYSTALLINE SHEARING VEINS. FRACTURING. FOLIATION. GRAIN SIZE. TEXTURE</small>	MINERALIZATION		ASSAY DATA						
From	To			TYPE	%	SAMPLE NO.	WIDTH	RECOV.	%CU	%FE	MOLY	A. AG
235	243.6	8	Fresh Hbde diorite + traces CP sample 235-243.6		.2	8766	8.6	8.6	0.20			
243.6	256	8 min	altered diorite dissem. CP sample 243.6 - 256	CP	.3	8767	12.4	12.4	1.02			
256	260.5	3e+	Stann green derived from diorite, 10% Hbde dissem CP mosz sample 256-260.5 261 foot of hole	CP mosz	.3	8768	4.5	5.5	tr			

091118

NEW IMPERIAL MINES LIMITED
MINING DIVISION - WHITEHORSE
YUKON TERRITORY

DD-26

PROPERTY <u>Cowley Park</u>	Claim No. <u>SUE 1.</u>	Strike <u>010° 54' NORTH.</u>	Lot. <u>5019N</u>	Hole No. <u>CP 63</u>
Date <u>6 May</u> 19 <u>71</u>	Section No. <u>7550</u>	Dip <u>cellar 45°, 49' @ 300</u>	Dep. <u>7555E</u>	Total Depth <u>320 ft B.C.</u>
Logged By <u>A. Hureau</u>	Plan No. _____	Level <u>SURFACE.</u>	Elev. <u>2502'</u>	Page No. <u>1 of 7</u>

FOOTAGE			ROCK CLASSIFICATION EPID. DIOP. GARN. SERP. QTZ/SIL. ACTINO. TREMO. CHLO. CRYSTALLINE. SHEARING. VEINS. FRACTURING. FOLIATION. GRAIN SIZE, TEXTURE	MINERALIZATION		ASSAY DATA							
From	To			TYPE	%	SAMPLE NO.	WIDTH	RECOV.	%CU	%FE	MOLY	AU/AG	INSOL.
0	13	26	overburden										
13	26.5	5	lt gy ls 70°										
26.5	28.5	2df	Skarn dissem. vfg cp Sample 26.5 - 28.5	cp	1.5	8800	2.0		Tr				
28.5	36.6	3d	Pale green pink diopside Skarn, (<u>9.5'</u> Recovery)										
36.6	37.6	9a	Light grey dyke C+D 60° dissem py 5% Sample: 36.6 - 37.6	py	5%	8801	1.0		0.12				
37.6	51	3d	Pale green - pink diopside Skarn minor epidote, quartz Core very broken										
51.0	55.5	2dg	Skarn med gy dissem vfg cp-py Sample 51 - 55.5	py cp	1.5%	8802	4.5		0.12				
55.5	66.8	3deg	Skarn faint banding 60° Sample 55.5 - 66.8			8803	11.3		Tr				

FOOTAGE			ROCK CLASSIFICATION <small>EPID. DIOP. GARN. SERP. QTZ/SIL. ACTINO. TREMO. CHLO. CRYSTALLINE. SHEARING. VEINS. FRACTURING. FOLIATION. GRAIN SIZE. TEXTURE</small>	MINERALIZATION		ASSAY DATA							
From	To			TYPE	%	SAMPLE NO.	WIDTH	RECOV.	%CU	%FE	MOLY	AU/AG	INSOL.
75.7	121.3	5	light grey LS banding 75° dissem VFg py cp? Sample 95.2 - 105.1	py cp	<.1	8807 8708	9.9						Tr
121.3	124.5	9b	med gy green microporphyratic basic dyke										
124.5	137.0	5	lt-med gy LS banding 70° traces py Sample 132 - 137	py		8808	5.0						.04
137.0	138.0	3a	Contact zone - Brick red altered diorite tr bo? Sample 137.0 - 138			8809	1.0						.08
138.0	145.1	8a	Pale green & altered diorite leached appearance dissem py cp VFg Sample 138 - 145.1	cp	.5	8814	7.1						.06
145.1	155.0	3deg	Shawn pale green traces VFg cp, mass Sample 145.1 - 155.0	cp, mass	<.2	8815	9.9						.19
155.0	159.0	5	light grey LS, faint banding 75° Sample 155.0 - 159.0			8810	4.4						Tr

FOOTAGE			ROCK CLASSIFICATION EPID. DIOP. GARN. SERP. QTZ/SIL. ACTINO TREMO. CHLO. CRYSTALLINE SHEARING. VEINS. FRACTURING. FOLIATION. GRAIN SIZE. TEXTURE	MINERALIZATION		ASSAY DATA						
From	To			TYPE	%	SAMPLE NO.	WIDTH	RECOV.	%CU	%FE	MOLY	AU/AG
159.0	161.2	3dqe	Stann pale green, patches cp at upper ct	cp	.3							
161.2	189.2	3/2g	Garnet stann minor epidote, dissem by patches cp, bo, moss, band 2, d, g, 2% cu From 181.5 - 184.5									
			Sample 159.0 - 169.0 -		.4	8811	10.0	10'	1.31			
			169.0 - 181.5 -	o	.3	8812	12.5	14.5	1.86			
			181.5 - 189.5 -	cp bo	1%	8813	7.7	8.5	1.51			
189.2	194.3	2cs	Stann drgy-green dissem cp bo, moss	cp bo								
			Sample 189.2 - 194.3 -	cp bo	2.5%	8816	5.1	5.0	5.98			
194.3	204.0	2g	garnet stann, interstitial calcite toward lower ct minor magnetite 2oz to 2oz									
			Sample 194.3 - 204 -	cp bo	0.5	8817	9.7	10'	0.60			

FOOTAGE			ROCK CLASSIFICATION <small>EPID. DIOP. GARN. SERP. QTZ/SIL. ACTINO TREMO. CHLO. CRYSTALLINE. SHEARING. VEINS. FRACTURING. FOLIATION. GRAIN SIZE, TEXTURE</small>	MINERALIZATION		ASSAY DATA						
From	To			TYPE	%	SAMPLE NO.	WIDTH	RECOV.	%CU	%FE	MOLY	AU/AG
204.0	212.6	2	massive sulphides with interstitial cte & epidote 60% sulphides heavy py Sample 204.0 - 212.6	py cp	5%	8818	8.6	7.9	3.59			
212.6	240.0	2 ³ g	Stann minor epidote occ hematite cte gran along core dissem cp fg Sample 212.6 - 222.6 222.6 - 232.6 232.6 - 240.0	cpb	.4	8819	10.0	10.3	.46			
						8820	10.0	10.2	0.10			
						8821	7.4	7.2	1.02			
240.0	254.9	2os	Stann grey green, minor garnet minor magnetite dissem cp bo fg Sample 240 - 245 - 245 - 254.9 -	cp bo	1%	8822	5.0	5.0	1.36			
						8823	9.4	9.3	2.52			
254.4	265.0	2 ³ gd	Stann lt gy - pink dissem cp vfg Sample 254.9 - 265.0	ap	.4	8824	10.6	10.8	0.34			

NEW IMPERIAL MINES LIMITED

MINING DIVISION - WHITEHORSE
YUKON TERRITORY

Hole No. 63 Page No. 6

FOOTAGE			ROCK CLASSIFICATION EPID. DIOP. GARN. SERP. QTZ/SIL. ACTINO TREMO. CHLO. CRYSTALLINE. SHEARING. VEINS. FRACTURING. FOLIATION. GRAIN SIZE. TEXTURE	MINERALIZATION		ASSAY DATA						
From	To			TYPE	%	SAMPLE NO.	WIDTH	RECOV.	%CU	%FE	MOLY	AU/AG
265	277.0	1/2 d	Skarn grey green, minor garnet streams bio & magnetite @ 15° to core	CP	.3	8825	12.0	11.5	0.58			
			dissem CP Vfg Sample 265-277.									
277.0	283.0	8h	diorite dissem CP fg lower ct + 40°	CP	.3							
283.0	285.5		Pale white - pink feldspathic dyke? 80?									
285.5	285.8	8h	as above Sample 277-285.5			8826	8.5	8.5	0.46			
285.8	291.5	25h	Silicious skarn dark grey bio rich. banding 70° - 50° dissem CP fg Sample 285.5 - 291.5	CP	.3	8827	6.0	5.5	0.64			
291.5	295.0	20h	Skarn grey green dissem CP fg, mica Sample 291.5 - 295.0	CP	1.5	8828	3.5	3.3	1.36			

FOOTAGE			ROCK CLASSIFICATION <small>EPID. DIOP. GARN. SERP. QTZ/SIL. ACTINO TREMO. CHLO. CRYSTALLINE. SHEARING. VEINS. FRACTURING. FOLIATION. GRAIN SIZE, TEXTURE</small>	MINERALIZATION		ASSAY DATA						
From	To			TYPE	%	SAMPLE NO.	WIDTH	RECOV.	%Cu	%Fe	MOLY	AJ/AG
295.0	307.8	81	Hbdc diorite dissem cp fg sample 295.0 - 307.8	cp	.2	8829	12.8	12.7	0.36			
307.8	313.6	70	dark grey fg basic dyke sample 307.8 - 313.6 c+s 40°			8830	5.8	5.8	Tr			
313.6	320.0	80	Hbdc diorite fg dissem cp sample 313.6 - 320.0	cp	.2	8831	7.4	7.0	Tr			
320.0			Foot of hole									

091118

DD-26

NEW IMPERIAL MINES LIMITED
MINING DIVISION - WHITEHORSE
YUKON TERRITORY

PROPERTY <u>Cowley Pass</u>	Claim No. <u>SWE 1.</u>	Strike <u>NORTH 010°54'</u>	Lat. <u>5119N</u>	Hole No. <u>CP 64</u>
Date <u>MAY 10th 19 71</u>	Section No. <u>7550</u>	Dip <u>-45°-42°E 270'</u>	Dep. <u>7551E</u>	Total Depth <u>270 ft. B.C.</u>
Logged By <u>D. TENNEY</u>	Plan No. _____	Level <u>SURFACE</u>	Elev. <u>2514' 25.02'</u>	Page No. <u>123</u>

FOOTAGE			ROCK CLASSIFICATION EPID. DIOP. GARN. SERP. QTZ/SIL. ACTINO TREMO. CHLO. CRYSTALLINE. SHEARING. VEINS. FRACTURING. FOLIATION. GRAIN SIZE, TEXTURE	MINERALIZATION		ASSAY DATA						
From	To			TYPE	% Cu	SAMPLE NO.	WIDTH	RECOV.	%CU	%FE	MOLY	AU/AG
0-0	11-0		o/b.									
11-0	16-0	3g	minor botnite cpy. diss. to MoS ₂ . sample 11-0-16-0	bo. cpy		8854	5-0	5-0	0.12			
16-0	88-2	5	partly banded white and grey limestone. core angles appx 60°-80° - mainly massive Malachite staining on jt @ 88'									
88-2	95-0	2g	diss bo. minor diopside. sample 88-2-95-0	f. gr. botnite	75	8855	6-8	7-0	0.30			
95-0	104-0	8 ^b	altered diorite + botnite. trace MoS ₂ . sample 95-0-104-0 copper staining (green) 101-102' 101-0 1/2" slip (+etc). 95°			8856	9-0	8-9	6.34			
104-0	117-8	3/2	3 ^d . diss botnite minor malachite staining on jts (mainly) sample 104-0-110-0 110-0-117-8			8857	6-0	5-9	0.28			
117-8	122-8	3 ^{1/2}	3 rd altered diorite diss. cpy+bo trace MoS ₂ . minor malachite on jts 122-126' sample 117-8-122-8 122-8-127-8 127-8-132-8	cpy bo. MoS ₂	75	8859	5-0	5-0	0.65			
						8860	5-0	4-9	1.15			
						8861	5-0	4-7	0.22			

NEW IMPERIAL MINES LIMITED

MINING DIVISION - WHITEHORSE

YUKON TERRITORY

Hole No. CP 64 Page No. 2 of 3

FOOTAGE		ROCK CLASSIFICATION EPID. DIOP. GARN. SERP. QTZ/SIL. ACTINO TREMO. CHLO. CRYSTALLINE. SHEARING. VEINS. FRACTURING. FOLIATION. GRAIN SIZE. TEXTURE	MINERALIZATION		ASSAY DATA							
From	To		TYPE	% Cu	SAMPLE NO.	WIDTH	RECOV.	% CU	% FE	MOLY	AU. AG	INSOL.
132.8	154.2	2g/3g garnet skarn - disis. sulphides. minor diopside - no more malachite. sample 132.8-137.8	bo. cpy	1.25	8862	5.0	5.0	1.92				
		137.8 - 142.8		.5	8863	5.0	5.0	0.72				
		142.8 - 147.8		.4	8864	5.0	5.0	0.62				
		147.8 - 154.2	bo. cpy MoS ₂	.75	8865	6.4	5.0	1.44				
154.2	161.0	9b dk grey/green. basic dyke contacts at 30° and chilled.										
161.0	185.6	3/2 9d. minor disis. bo. MoS ₂ cpy. sample 161.0-171.0	lt bo. cpy	.2	8866	10.0		0.14				
		171.0 - 181.0	bo. cpy	.2	8867	10.0		1.06				
		181.0 - 185.6.	bo. cpy	.2	8868	4.6		0.20				
185.6	223.5	8a(b). altered to fresh diorite - minor skarnification disis bornite cpy (<1%) sample 185.6 - 195.6.		.2	8869	10.0	10.0	0.06				
		195.6 - 205.6		.2	8870	10.0	10.0	0.28				
		205.6 - 215.6		.2	8871	10.0	10.0	0.24				
		215.6 - 223.5.		.2	8872	7.9	7.9	0.74				
223.5	225.7	9b - fine grained basic dyke. - (30°?)										

NEW IMPERIAL MINES LIMITED
 MINING DIVISION - WHITEHORSE
 YUKON TERRITORY

Hole No. C.P.64 Page No. 3 of 3

FOOTAGE			ROCK CLASSIFICATION <small>EPID. DIOP. GARN. SERP. QTZ/SIL. ACTING TREMO. CHLO. CRYSTALLINE. SHEARING VEINS. FRACTURING. FOLIATION GRAIN SIZE. TEXTURE</small>	MINERALIZATION		ASSAY DATA						
From	To			TYPE	%	SAMPLE NO.	WIDTH	RECOV.	%CU	%FE	MOLY	AU/AG
225.7	244.0	8a	altered to fresh diorite minor inclusion of garnet skarn. trace bornite chalcocyanite sample 225.7 - 235.7 235.7 - 244.0.									
				2	8873	10.0	10.0	0.65				
				2	8874	8.3	8.3	0.24				
248.0	248.0	9b	basic dyke contacts at 40° & chilled.									
248.0	253.5	8c	altered diorite. minor malachite staining.									
253.5	255.7	9b	light green basic dyke.									
255.7	262.0	5	fault broken core mud/breccia run 257.8 - 262.0 - 2.7' recovered									
262.0	270.0	8/8a	partly altered diorite - strong chlorite developed in places. Hole ends @ 270'.									

ELEVATION		ROCK CLASSIFICATION EPID. DIOP. GARN. SERP. QTZ/SIL. ACTINO. TREMO. CHLO. CRYSTALLINE. SHEARING. VEINS. FRACTURING. FOLIATION. GRAIN SIZE. TEXTURE	MINERALIZATION		ASSAY DATA							
From	To		TYPE	%	SAMPLE NO.	WIDTH	RECOV.	%CU	%FE	MOLY	AU/AG	INSOL
	75.6	3d	creamy white shawn									
	99.2	5	hard py banded limestone 45° - 70° - 20°									
99	125.7	5	light grey limestone minor shawn location one 1' band 3d, 5% py from 109.1 - 109.1 40° - 30° Sample 120.7 - 125.7 -			8892	5.0	5'	tr			
125	135.1	2 1/4	pink grey, unskarnified L.S. diss em py minor cp 5% py Sample 129.7 - 135.1 -			.3	8893	9.4 - 10'	tr			
135	140.6	2 1/4	shawn grey - pink diss em py minor cp minor epidote Sample 135.1 - 140.6 -			.1		5.5				
140	143.0	2d	leached zone diss em py cp Sample 140.6 - 143.0 -			.5	8894	5.5	tr			
						8895	2.4		tr			

NEW IMPERIAL MINES LIMITED
 MINING DIVISION - WHITEHORSE
 YUKON TERRITORY

Hole No. CP6E Page No. 3

FOOTAGE			ROCK CLASSIFICATION <small>EPID. DIOP. GARN. SERP. QTZ/SIL. ACTINO TREMO. CHLO. CRYSTALLINE. SHEARING. VEINS. FRACTURING. FOLIATION. GRAIN SIZE. TEXTURE</small>	MINERALIZATION			ASSAY DATA					
From	To			TYPE	%	SAMPLE NO.	WIDTH	RECOV.	%CU	%FE	MOLY	AU. AG
143	151	8/2	Hbdc diorite 100% cp 3' lost core 147.3-151									
151	165.5	2 1/2	Skarn. leached appearance heavily mineralized py minor cp Sample 151-161 — 161-165.5 — Disintegrated 156-158	py cp	.2	8898	10.0	6'	4.2			
				py cp	.2	8899	4.5		0.04			
					1			4'				
165.5	171.0	2 1/2	Skarn dark grey dissem py cp 10% sulphide minor cp Sample 165.5-171 —		.3							
						8900	5.5	6'	0.06			
171.0	186.6	2 1/2	Skarn pale green calcareous 10% py minor cp low ch ct 40° Sample 171-181 — 181-186.6 — Calc. "dog tooth" spec. 180.5 cp 182									
						8501	10.0	10'	0.10			
						8502	5.6	3.3	0.48			

NEW IMPERIAL MINES LIMITED
 MINING DIVISION - WHITEHORSE
 YUKON TERRITORY

Hole No. CP45 Page No. 7

FOOTAGE			ROCK CLASSIFICATION EPID. DIOP. GARN. SERP. QTZ/SIL. ACTINO TREMO. CHLO. CRYSTALLINE. SHEARING. VEINS. FRACTURING. FOLIATION. GRAIN SIZE. TEXTURE	MINERALIZATION		ASSAY DATA						
From	To			TYPE	%	SAMPLE NO	WIDTH	RECOV.	%CU	%FE	MOLY	AU. AG
186.6	241.5	89	Darkish red Garnet skarn limonite pyrite zones discolor. CP, v. red lo	CP	.5							
			Sample 186.6 - 195			8503	8.4	3.7	1.25			
			195.0 - 205			8504	10.0	10'	0.58			
			- 215			8505	10.0	10'	0.96			
			- 225			8506	10.0	10.3	0.79			
			- 235			8507	10.0	7.8	0.36			
			241.5			8508	6.5	6.3	0.24			
241.5	241.7	96	basic dykelet chs 60°									
241.7	255.5	97	Pale pink-red skarn discolor. CP, PY,		.5							
			Sample 241.5 - 251.5			8509	10.0	10'	0.46			
			251.5 - 255.5			8510	4.0	7'	0.60			
255.5	265.5	2-10	Pale red to black skarn discolor. CP, minor mss	limonite	1/10							
			Sample 255.5 - 265.5			8511	10.0	10.7	2.09			

NEW IMPERIAL MINES LIMITED
 MINING DIVISION - WHITEHORSE
 YUKON TERRITORY

Hole No. C.P. 65 Page No. 5

FOOTAGE		ROCK CLASSIFICATION EPID. DIOP. GARN. SERP. QTZ/SIL. ACTINO TREMO. CHLO. CRYSTALLINE. SHEARING. VEINS. FRACTURING. FOLIATION. GRAIN SIZE. TEXTURE	MINERALIZATION		ASSAY DATA							
From	To		TYPE	%	SAMPLE NO.	WIDTH	RECOV.	%CU	%FE	MOLY	AU/AG	INSOL
268.5	270.5	251 Light green shawn, brecciated fractures filled with calcite dissom cp py Sample 268.5 - 270.5	cp py	2.5	8512	5.0	5'	3.99	[3.00]			
270.5	276.2	229 Dark red granular shawn dissom clc sq Sample 270.5 - 276.2	cp	.3	8513	5.6	5.7	0.10				
276.2	281.6	230 Shawn pale green Fault banding 80° dissom sq cp py Sample 276.2 - 281.6	cp py	.2	8514	5.4	6.3	1.70				
281.6	291.1	231 Dark red granular shawn dissom cp py Fault banding 110° Sample 281.6 - 291.1	cp py	.2	8515	10.0	10.3	0.10				
291.1	293.7	231 Trace cp Sample 291.1 - 293.7			8516	2.1	1.5	0.60				
293.7	301.5	236 Dark grey basaltic dyke										
301.5	310.0	237 Diorite + idcs cp, 304.9-306 crossed by 1/2% cu 301.5 - 310		.1	8517	8.5	8'	0.34				

310.0 Hole ends

NEW IMPERIAL MINES LIMITED
MINING DIVISION - WHITEHORSE
YUKON TERRITORY

091118

DD-26

PROPERTY <u>Cowley Park</u>	Claim No. <u>SUEZ</u>	Strike <u>N</u>	Lat. <u>51°38'N</u>	Hole No. <u>CP66</u>
Date <u>10 May 1971</u>	Section No. <u>7650</u>	Dip <u>-45 (-43°) @ 200'</u>	Dep. <u>7652E</u>	Total Depth <u>225.0</u> B2
Logged By <u>A. Hureau</u>	Plan No. _____	Level _____	Elev. <u>2511.1'</u>	Page No. <u>1 of 5</u>

FOOTAGE		ROCK CLASSIFICATION EPID. DIOP. GARN. SERP. QTZ/SIL. ACTINO. TREMO. CHLO. CRYSTALLINE. SHEARING. VEINS. FRACTURING. FOLIATION. GRAIN SIZE, TEXTURE	MINERALIZATION		ASSAY DATA							
From	To		TYPE	%	SAMPLE NO.	WIDTH	RECOV.	%CU	%FE	MOLY	AU/AG	INSOL.
0	10.0	overburden										
10	22.0	lt-med gy LS faint banding 50-70°										
22.0	23.0	Hbdr diorite										
23.0	27.0	Pale gy px, shaly, calcareous										
27.0	34.8	med gy LS 80°-75°										
34.8	37.8	Garnet skarn										
37.8	49.0	Hbdr diorite slightly epidolized traces diss. ep, py moss sample 37.8-49.0	epidote	.2	8875	11.2	11.5	tr				
49.0	65.4	skarn pale grey green leaves 80 to 7" near upper ct. sample 60.4-65.4			8876	5.0	5.0	tr				
65.4	67.8	dark grey altered diorite diss. ep, py sample 65.4-67.8	ep py	.5	8877	2.1	2.2	tr				

NEW IMPERIAL MINES LIMITED
MINING DIVISION - WHITEHORSE
YUKON TERRITORY

Hole No. C.P.66 Page No. 2

FOOTAGE			ROCK CLASSIFICATION EPID. DIOP. GARN. SERP. QTZ/SIL. ACTINO. TREMO. CHLO. CRYSTALLINE. SHEARING. VEINS. FRACTURING. FOLIATION. GRAIN SIZE. TEXTURE	MINERALIZATION		ASSAY DATA						
From	To			TYPE	%	SAMPLE NO.	WIDTH	RECOV.	%CU	%FE	MOLY	AU/AG
67.8	73.1	3 to 9	Skarn pale pink, heavy wollostonite? Sample 67.8 - 73.1			8878	5.3	5.0	tr			
73.1	77.5	3 deg	Skarn green grey tr cp Sample 73.1 - 77.5	cp	tr	8896	4.4	4.4	0.06			
77.5	89.9	2 deg	Skarn pink-grey dissem bo cp heavy mass one 1" band @ 81.5, one 3" band magnetite skarn @ 81.5 one 3" band magnetite skarn @ 83.0 Sample 77.5 - 89.9	bo cp mass -								
					1.0	8879	12.4	13.0	1.39			
89.9	93.6	3 to 9	altered diorite traces cp		.2			4.7				
93.6	101.9	3 to 9	Skarn light grey traces dissem cp Sample 89.9 - 101.9		.2							
						8897	12.0	5.4	0.32			

NEW IMPERIAL MINES LIMITED
MINING DIVISION - WHITEHORSE
YUKON TERRITORY

Hole No. 66 Page No. 3

FOOTAGE		ROCK CLASSIFICATION EPID. DIOP. GARN. SERP. QTZ/SIL. ACTINO TREMO. CHLO. CRYSTALLINE. SHEARING. VEINS. FRACTURING. FOLIATION. GRAIN SIZE. TEXTURE	MINERALIZATION		ASSAY DATA							
From	To		TYPE	%	SAMPLE NO.	WIDTH	RECOV.	%CU	%FE	MOLY	AU/AG	INSOL
101.9	103.5	20ft Skarn green leached appearance dissem & patches CP	CP	1.5								
103.5	106.5	25ft mineralized skarn 50% CP Sample 101.9 - 106.5		12%	8880	4.6	4.5	7.78				
106.5	109.7	20ft rubble leached, dissem CP py Sample 106.5 - 109.7		1.5%	8881	3.2	3.2	5.92				
109.7	128.5	20ft Skarn heavily mineralized Zones massive sulphides CP py interstitial calcite also 6" band magnetite skarn @ 128.2, Sample 109.7 - 119.7 119.7 - 128.5		2%	8882	10.0	10.2	2.39				
				5%	8883	8.8	10.3	4.32				
128.5	140.8	20ft Carved skarn dissem CP rare bo, occ flake in ore Sample 128.5 - 140.8		.4	8884	12.3	12.3	0.34				

FOOTAGE			ROCK CLASSIFICATION <small>EPID. DIOP. GARN. SERP. QTZ/SIL. ACTINO. TREMO. CHLO. CRYSTALLINE. SHEARING. VEINS. FRACTURING. FOLIATION. GRAIN SIZE. TEXTURE</small>	MINERALIZATION		ASSAY DATA						
From	To			TYPE	%	SAMPLE NO.	WIDTH	RECOV.	%CU	%FE	MOLY	AU/AG
140.8	145.1	9b	basic dyke micro porphyritic 10's 45°									
145.1	162.4	39	shawn pink, minor epidote diopside, dissem CP sample 145.1 - 155.1 - 155.1 - 162.4 -	CP	.6	8885	10.0	10.8	0.76			
						8886	7.3	7.1	1.30			
162.4	171.0	2fe	shawn dark grey minor garnet irregular calcite veinlets gone along core dissem CP, moss sample 162.4 - 171.0 -	CP	.8	8887	8.6	8.5	1.20			
171.0	175	39e	Garnet shawn traces CP sample 171.0 - 175.0 core broken		.2	8888	4.0	4.0	0.74			
175.0	179.7	9b	basic dyke tr Fg py Fe staining @ lower ct lower ct @ 15°									
179.7	192.9	2dfe	shawn pale grey dissem py minor CP lower ct 4.5°		.2	8889	13.2	11.5	0.36			
			sample 179.7 - 192.9									

FOOTAGE			ROCK CLASSIFICATION <small>EPID. DIOP. GARN. SERP. QTZ/SIL. ACTINO TREMO. CHLO. CRYSTALLINE SHEARING VEINS FRACTURING. FOLIATION. GRAIN SIZE. TEXTURE</small>	MINERALIZATION		ASSAY DATA						
From	To			TYPE	%	SAMPLE NO.	WIDTH	RECOV.	%CU	%FE	MOLY	AU. AG
192.9	200.0	8b	Heavily mineralized altered diorite, dissem py minor cp. lenses massive sulphides, ^{+0.3"} with interstitial calcite, 25% sulphides Sample 192.9 - 200	py cp	1.5%	8890	7.1	8.4	1.49			
200.0	207.6	8a	Diorite + traces dissem cp py, one 3" band, leached, heavily mineralized, 20% sulphides py cp @ 203.8 Sample 200 - 207.6	py cp	7.1	8891	9.6	7.6	0.44			
209.6	213.5	7b	dark grey basic dyke upper 5" lower 35" chilled 3"									
213.5	225.0	8a	Grey green Hb'de diorite no visible mineralization.									
	225.0		Hole ends.									

PROPERTY <u>Cowley Park</u>	Claim No. <u>SUE 4</u>	Strike <u>010° 54' (NORTH)</u>	Lat. <u>4968 N</u>	Hole No. <u>CP58</u>
Date <u>5 May 1972</u>	Section No. <u>7150</u>	Dip <u>collar 60° 57' @ 200'</u>	Dep. <u>7153 E</u>	Total Depth <u>252 ft. BQ.</u>
Logged By <u>A. Hurcau</u>	Plan No. _____	Level <u>SURFACE</u>	Elev. <u>2502.0'</u>	Page No. <u>1 of 4</u>

FOOTAGE			ROCK CLASSIFICATION EPID. DIOP. GARN. SERP. QTZ/SIL. ACTINO TREMO. CHLO. CRYSTALLINE. SHEARING. VEINS. FRACTURING. FOLIATION. GRAIN SIZE, TEXTURE	MINERALIZATION		ASSAY DATA						
From	To			TYPE	%	SAMPLE NO.	WIDTH	RECOV.	%CU	%FE	MOLY	AU/AG
0	6		0.b									
6	14.0	5	light grey LS 70° sample 6-14.0			8724	8.0		Tr			
14.0	15.8	29	Garnet skarn, dissemin bo cp bo, malachite staining Sample 14.0-15.8	bo cp	0.5	8725	1.8		1.69			
15.8	25.5	3dg	Limy diopside skarn minor garnet tr vfg bo cp Sample 15.8-25.5	bo cp	.1	8726	9.7		0.36			
25.5	43.0	5b/25	dark grey sheared, skarnified limestone dissemin pp-cp throughout Altered diorite 30-32 Bubble 37-38.9 Sample 25.5-35.5 35.5-43.0	cp	1%	8727	100		0.16			
43.0	45.0	3dg	Garnet skarn dissemin cp bo, moss	cp, bo	.3	8728	7.5		0.06			
45.0	48.0	3dg	Pale grey skarn traces cp	cp	.1							

FOOTAGE			ROCK CLASSIFICATION EPID. DIOP. GARN. SERP. QTZ/SIL. ACTINO TREMO. CHLO. CRYSTALLINE. SHEARING. VEINS. FRACTURING. FOLIATION. GRAIN SIZE. TEXTURE	MINERALIZATION		ASSAY DATA						
From	To			TYPE	%	SAMPLE NO.	WIDTH	RECOV.	%CU	%FE	MOLY	AU/AG
48.0	57.0	3g	reddish brown garnet skarn dissem mo, cp, bo traces qb dyke Sils - 52 Contact mineralized.	cp bo mix	.2							
57.0	63.0	3dc	Skarn limy shroved num cte filled veinlets traces bo - cp	bo cp	.2							
			Sample 43.0 - 53.0			8729	10.0		0.42			
			53.0 - 63.0			8730	10.0		0.22			
63.0	66.2	3gd	Skarn disse m cp bo VF9		.2							
66.2	74.0	2def/3a	dark grey skarn lenses diorite to sil disse m cp bo VF9 Sample 63.0 - 74.0	cp bo	.5							
						8731	11.0		0.70			
74.0	76.5	3g/1a	Contact zone bending in garnet skarn 20° traces cp		.2							
76.5	95.5	8a min	pink altered diorite core very broken disse m bo cp	bo cp	.2							

FOOTAGE		ROCK CLASSIFICATION <small>EPID. DIOP. GARN. SERP. QTZ/SIL. ACTINO TREMO. CHLO. CRYSTALLINE. SHEARING. VEINS. FRACTURING. FOLIATION. GRAIN SIZE. TEXTURE</small>	MINERALIZATION		ASSAY DATA							
From	To		TYPE	%	SAMPLE NO.	WIDTH	RECOY.	%CU	%FE	MOLY	AU/AG	INSOL.
		Sample 74.0 - 84.0			8732	10.0		0.22				
		84 94.0			8733	10.0		0.12				
95.5	129.8	80/35 Pink altered diorite disseminated Kfs, cp, b, o,	CP, b, o,	.2								
129.8	136.0	2F Skarn med gy siliceous, dissem CP Fg	CP	.7								
136.0	140.0	10/15/20 Fault zone Talc & altered diorite										
		Sample 94 - 104			8734	10.0	7.5	0.10				
		104 - 114			8735	10.0		0.36				
		114 - 124			8736	10.0		Tr				
		124 - 129.8			8737	5.8		0.08				
		129.8 - 136.0			8738	6.2		0.67				
		136.0 - 146.0			8739	10.0		0.52				
140.0	150.7	81 Altered diorite Sample 146 - 150.7			8740	4.7		0.45				
150.7	189.0	2df Skarn minor garnet, epidote dissem CP Kfs, Ficks Moss		.5								

NEW IMPERIAL MINES LIMITED
MINING DIVISION - WHITEHORSE
YUKON TERRITORY

Hole No. CP58 Page No. 4

FOOTAGE		ROCK CLASSIFICATION EPID. DIOP. GARN. SERP. QTZ/SIL. ACTINO TREMO. CHLO. CRYSTALLINE. SHEARING. VEINS. FRACTURING. FOLIATION. GRAIN SIZE. TEXTURE	MINERALIZATION		ASSAY DATA							
From	To		TYPE	%	SAMPLE NO.	WIDTH	RECOV.	%CU	%FE	MOLY	AU/AG	INSOL
		Sample 150.7 - 162.0			8741	11.3	7.5	0.30				
		162.0 - 172.0			8742	10.0	10	0.28				
		172.0 - 182.0			8743	10.0	10	0.30				
		182.0 - 189.0			8744	7.0	7.0	0.54				
		5' lost core 155-162 Fault zone										
189.0	201	Blgfe Skarn, dissem, cp bo fq lower ct 60° Sample 189.0 - 201.0	cp bo	.5	8745	12.0		0.34				
201	252	8 Fresh Hbde diorite 30% mafic minerals, rare specs cp-bo Sample 201 - 211 211 - 221 221 - 231			8746	10.0		0.12				
					8747	10.0		0.22				
					8748	10.0		0.06				
	252.0	Foot of hole						:				

FOOTAGE			ROCK CLASSIFICATION <small>EPID. DIOP. GARN. SERP. QTZ/SIL. ACTINO TREMO. CHLO. CRYSTALLINE, SHEARING, VEINS, FRACTURING, FOLIATION, GRAIN SIZE, TEXTURE</small>	MINERALIZATION		ASSAY DATA						
From	To			TYPE	%	SAMPLE NO.	WIDTH	RECOV.	%CU	%FE	MOLY	AU/AG
56.1	59	5	Pale grey Cg LS									
59	59.1	3w/s	Shattered LS, vuggy @ lower Ct, bedding 60°									
59.1	59.9	3	Hbde, bio, granodiorite, tr vfg py cp?									
59.9	62.9	3dg	Shann, serp'd @ lower Ct dissem py, tr cp?, bedding 45°	py	3							
				cp	tr							
62.9	68.8	3	bio, Hbde, Act, diorite 40% matrix, streaks & dissem py, tr bo	py	2							
				bo	tr							
			Sample 59.1 - 64.1			9678	5	5	.03			
			64.1 - 68.8			9679	4.7	4.7	.02			
68.8	71.5	3gd	Shann, calcareous, vuggy									
71.5	74.5	5	mottled grey LS									

FOOTAGE			ROCK CLASSIFICATION <small>EPID. DIOP. GARN. SERP. QTZ/SIL. ACTINO. TREMO. CHLO. CRYSTALLINE. SHEARING. VEINS. FRACTURING. FOLIATION. GRAIN SIZE. TEXTURE</small>	MINERALIZATION		ASSAY DATA						
From	To			TYPE	%	SAMPLE NO.	WIDTH	RECOV.	%CU	%FE	MOLY	AU/AG
73.5	81.5	3dg	Skarn green pink streaks & dissem py, Fg,	py	3							
81.5	87.7	5	Pale grey limestone bedding 45° to 30°	py	tr							
			Sample 68.8 to 73.8			9680	5	4.3	.01			
			73.8 - 78.8			9681	5	5	.02			
			78.8 - 81.5			9682	2.7	2.7	.02			
87.7	88.8	3dg, 2	Skarn pink - dk grn blbs & dissem py, CP, lower c+ 45°	py cp	1 3							
88.8	90.9	8amin	Hbdc & white dissem Kfg py, CP?	py	2							
90.9	101.3	3g	Skarn, red, minor diopside dissem Kfg py, CP? bedding 50°	py	3							
			Sample 87.7 - 92.7			9683	5	6.5	.02			
			92.7 - 98.7			84	6	6	.02			
			98.7 - 103.7			1685	5	5.5	.02			

NEW IMPERIAL MINES LIMITED
 MINING DIVISION - WHITEHORSE
 YUKON TERRITORY

Hole No. 115.1 Page No. 7

FOOTAGE			ROCK CLASSIFICATION <small>EPID. DIOP. GARN. SERP. QTZ/SIL. ACTINO TREMO. CHLO. CRYSTALLINE, SHEARING, VEINS, FRACTURING, FOLIATION, GRAIN SIZE, TEXTURE</small>	MINERALIZATION		ASSAY DATA						
From	To			TYPE	%	SAMPLE NO.	WIDTH	RECOV.	%CU	%FE	MOLY	AU/AG
101.3	115.3	3dy	Sharn pale green - red conc broken talc Serp developed from 105.5 to 107.8, shearing @ 40° conc rusty @ broken from 109 to 119.5 Patchy dissemin py Fg	py	1							
115.3	117.5	395	rotted garnet sharn									
117.5	123.6	395d	sharn wh - pink calcareous bedding vague 170° to 30°									
123.6	143.9	5	grey ls, bedding 20°, 10°, 55° @ lower part	py	tr							
143.9	147.8	965	Green mottled basic dyke cts 50°, 5" ls from 146.8'									

FOOTAGE			ROCK CLASSIFICATION <small>EPID. DIOP. GARN. SERP. QTZ/SIL. ACTINO. TREMO. CHLO. CRYSTALLINE. SHEARING. VEINS. FRACTURING. FOLIATION. GRAIN SIZE. TEXTURE</small>	MINERALIZATION		ASSAY DATA						
From	To			TYPE	%	SAMPLE NO.	WIDTH	RECOV.	%CU	%FE	MG/LY	AU/AG
147.8	148.9	5	grey LS									
	150.2	2d	Heavily mineralized Storn, Cg Patches cp bo, in cte diopside matrix	cp	30							
				bo	8							
150.2	155.2	2dgo	Storn, micaceous from 157.5, blebs & dissem bo, cp, bedding 50°	cp	2							
				bo	2							
			Sample 148.9 to 155.2			96.72	6.3	6.3	5.33			
155.2	168.7	3/4d	Storn Overrun - grey Vuggy 158.5 - 159 & 166.5-167.5 probly dissem & strks cp, py, one 1/4" str bo @ 166.3									
			Sample 155.2 - 160.2			96.73	5	5.7	.48			
			160.2 - 165.2			96.74	5	5.5	1.43			
			165.2 - 168.7			96.75	3.5	3.5	1.05			

NEW IMPERIAL MINES LIMITED

MINING DIVISION - WHITEHORSE
YUKON TERRITORY

Hole No. H51 Page No. 6

FOOTAGE			ROCK CLASSIFICATION EPID. DIOP. GARN. SERP. QTZ/SIL. ACTINO. TREMO. CHLO. CRYSTALLINE. SHEARING. VEINS. FRACTURING. FOLIATION. GRAIN SIZE. TEXTURE	MINERALIZATION			ASSAY DATA					
From	To			TYPE	%	SAMPLE NO.	WIDTH	RECOV.	%CU	%Fe	MOLY	AU/AG
148.7	153.7	39w	Coarse grained gneiss + horn with white silicate mineral + trem, wollastonite? Calcareous, could appear minor diopside									
183.7	186	80 min	Wh - pale green & H ₂ O dioritic dissem cp	CP	4							
186	190	3da 80	Sharn green with strs of dioritic, dissem cp	CP	3							
190	192	3	3 qd 6" Rec									
192	196	3/2 dsc	Sharn grey green dissem vfg cp, bedding 45° Core very broken 4' Rec From 192 - 198	CP	1%							
196	206.0	31q	Sharn grey green massive 202 - 203.5 serp, crusty 204.1 - 205.3 blks & dissem Py 2' Rec 198 - 207	Py	2%							

NEW IMPERIAL MINES LIMITED
 MINING DIVISION - WHITEHORSE
 YUKON TERRITORY

Hole No. H 51 Page No. 7

FOOTAGE			ROCK CLASSIFICATION <small>EPID. DIOP. GARN. SERP. QTZ/SIL. ACTINO TREMO. CHLO. CRYSTALLINE. SHEARING. VEINS. FRACTURING. FOLIATION. GRAIN SIZE. TEXTURE</small>	MINERALIZATION			ASSAY DATA					
From	To			TYPE	%	SAMPLE NO.	WIDTH	RECOV.	%CU	%FE	MOLY	AURAG
			Sample 183.7 - 188.7									
			188.7 - 195.0									
			195.0 - 205.0									
			205.0 - 206.8									
206.8	238.7	3d	Green pink mottled skarn Vuggy, calcareous, zeolites? @ 217' Lead to 218' & @ lower ct, bedding 45°									
238.7	242.1	3d 3d	Lenses diorite in skarn									
242.1	249.5	8 min	Hbde diorite, 50% mafics dissem cp fg	cp	2							
			Sample 242.1 - 247.1									
249.5	263.4	3d wq	Skarn wh-grn minor Ba dissem vfg cp	cp	4.5							
263.4	276	8	Hbde diorite Lenses of 3d to 6" 2" broken mottled core @ 270' fr cp	cp	2.5							

NEW IMPERIAL MINES LIMITED

MINING DIVISION - WHITEHORSE
YUKON TERRITORY

Hole No. 1151 Page No. B 153

FOOTAGE			ROCK CLASSIFICATION EPID. DIOP. GARN. SERP. QTZ/SIL. ACTINO TREMO. CHLO. CRYSTALLINE SHEARING. VEINS. FRACTURING. FOLIATION. GRAIN SIZE. TEXTURE	MINERALIZATION			ASSAY DATA					
From	To			TYPE	%	SAMPLE NO.	WIDTH	RECOV.	%CU	%FE	MOLY	AU. AG
276	278	3'	Skarn pale green pink <i>V 099</i>									
	278		Foot of hole									
			Sample 228 - 243			9689	5	5	.08			
			243 - 250			9690	7	7	.20			
			-253									
			From 148.7 - 168.7			236						
						17.8'						

PROPERTY <u>Whitehorse Copper Mines</u>	Claim No. <u>JEAN 38 Fr</u>	Strike <u>West (grad)</u>	Lat. <u>12811</u>	Hole No. <u>HS-2</u>
Date <u>Oct 22nd 19 71</u>	Section No. <u>128 N</u>	Dip <u>-55°</u>	Dep. <u>21 W</u>	Total Depth <u>457'</u>
Logged By <u>J. Tenney</u>	Plan No. _____	Level <u>surface</u>	Elev. <u>surface</u>	Page No. <u>1 of 9</u>

FOOTAGE			ROCK CLASSIFICATION EPID. DIOP. GARN. SERP. QTZ. SIL. ACTINO TREMO. CHLO. CRYSTALLINE. SHEARING. VEINS. FRACTURING. FOLIATION. GRAIN SIZE. TEXTURE	MINERALIZATION		ASSAY DATA						
From	To			TYPE	% Cu	SAMPLE NO.	WIDTH	RECOV.	% CU	% FE	MOLY	AU/AG
0	215	o/b.										
215	33.9	5	grey limestone banding 25-30° core moderately massive (12" length)									
33.9	48.2	9b	dyke dark gylgn v-fine grained massive (core pieces 6"-12") 33.9 chilled contact 30° 48.2 chilled contact 48.2 1/8" mud slip 10°									
48.2	62.1	5	grey limestone massive (core 12-24" length) banding (~? bedding) 25-30° 1% diss. epq. py. hematite in very fine specks. Test sample 56-61'	.25	9692	5.0	5.0					
62.1	73.0	2g	garnet skarn massive - fair coning 16-8' pods faint banding 30°									
73.0	79.8	1/2 94c	diss. py. epq. specks test sample 73.0-78.0 79.0 native copper on ft	specks epq. 1/2	9693							

NEW IMPERIAL MINES LIMITED
MINING DIVISION - WHITEHORSE
YUKON TERRITORY

Hole No. H 5-2 Page No. 399

FOOTAGE			ROCK CLASSIFICATION EPID. DIOP. GARN. SERP. QTZ/SIL. ACTINO. TREMO. CHLO. CRYSTALLINE. SHEARING. VEINS. FRACTURING. FOLIATION. GRAIN SIZE. TEXTURE	MINERALIZATION		ASSAY DATA						
From	To			TYPE	% Cu	SAMPLE NO.	WIDTH	RECOV.	% CU	% FE	MOLY	AU/AG
112.1			sample 90-95.	py. bc.	1/2	9320	5.0	5.0	.30			
21	117.7	3 ^d	1/2 g. banding 30-40° 1-2% pyrite.									
127	130.4	4 ^g	partly stratified - yellowish micaceous red tinted bands banding 30° 1-2% fine disseminated pyrite.									
130.4	131.2	8 ^a	light grey - texture dioritic contacts @ 55° and 40° - very sharp and delineated									
31.2	136.4	4 ^a	red/brown very hard sediment 2% dis. pyrite.									
136.4	147.5	3 ^b	gabbro texture mineral white and pale green mineral - ? hematite diopside - some waxy in places.									
147.5	150.8	2 ^d	banding @ 40° ? fine grey waste									
149.8	152.4	3 ^g	waxy.									
152.4	162.7	4 ^g /3 ^d	fine banding in places, 2-35° 1-2% pyrite in dis. spots.									

FOOTAGE			ROCK CLASSIFICATION <small>EPID. DIOP. GARN. SERP. QTZ/SIL. ACTINO TREMO. CHLO. CRYSTALLINE. SHEARING. VEINS. FRACTURING. FOLIATION. GRAIN SIZE. TEXTURE</small>	MINERALIZATION		ASSAY DATA						
From	To			TYPE	%	SAMPLE NO.	WIDTH	RECOV.	%CU	%FE	MOLY	AU. AG
122.7	161.1	37	mineral diopside									
165.1	172.0	5	banding @ 30-75° light grey color									
173.0	192.0	32										
			112.1 - 196.0 coarse 3-24" pieces good covering									
192.0	200.0	3 rd	mineral diopside texture mainly? plac. feld epidote - banding 25-45° actinolite stain on joints at 195.5, 198.0 199.7-199.9 mineral diopside 196 200									
200.0	209.7	2 ^o	med to fine grained basic dyke contacts chilled - lower contact at 25° (sharp)									
209.7	209.7	2 ^o	altered diopside heavily chloritized 1% Zns with contacts sharp at 25°									
209.7	215.0	3 rd	with ? idiomorphic epidote banding 20-45° 1% pyrite trace spy on joints and down	epy	2 1/4							
215.0	219.2	35										
219.2	220.0	2 ^o	very coarsely crystalline - ? dyke									

NEW IMPERIAL MINES LIMITED

MINING DIVISION - WHITEHORSE

YUKON TERRITORY

Hole No. 45-2 Page No. 599

FOOTAGE			ROCK CLASSIFICATION EPID. DIOP. GARN. SERP. QTZ/SIL. ACTINO. TREMO. CHLO. CRYSTALLINE. SHEARING. VEINS. FRACTURING. FOLIATION. GRAIN SIZE. TEXTURE	MINERALIZATION			ASSAY DATA					
From	To			TYPE	% Cu	SAMPLE NO.	WIDTH	RECOV.	% CU	% FE	MOLY	AU. AG
220.0	232.3	39	mineral diopside - well located + irregular in patches. mineral diopside epidote.									
			200 - 232.3 good coning.									
232.3	266.2	80	very mafic slightly altered diorite - good hornitic texture throughout - bleached string in core at 35-45°									
			232.3 sharp contact @ 55°.									
			233.3 malachite on joint + qtz.									
			234-247 broken core - qtz/epidote filled fracture along core. (± 0°)									
			243.5 mineral malachite on fracture.									
			259.3 1/4-1/2" alteration zone kfs + apy. - specks apy. in adjacent diorite. + epidote, actinolite.									
			253.9 1/2" wide alteration zone < 1/16" string of apy. natural copper cuprite + qtz act. epidote.									
266.2	269.0	31	3 qtz. core located in places.									
269	276.7	34	1/4" mafic mineral dioritic texture 269.0-270 - banding 30° - 5-10% pyrite									

FOOTAGE			ROCK CLASSIFICATION <small>EPID. DIOP. GARN. SERP. QTZ/SIL. ACTINO TREMO. CHLO. CRYSTALLINE SHEARING VEINS FRACTURING FOLIATION GRAIN SIZE TEXTURE</small>	MINERALIZATION		ASSAY DATA						
From	To			TYPE	%	SAMPLE NO.	WIDTH	RECOV.	%CU	%FE	MOLY	AU:AG
283.0	293.0	29	malachite & azurite 283.0-293.0 mmol malachite staining = chrysocolla, azurite etc.									
284.3	293.0	3/2 2g	natural copper common on joints and fractures and disseminated blebs. sample: 288-293	natural Cu. malachite	10%							
				natural Cu. malachite	10	9341	50	5.0	.68			
293.0	298.0	XX	micaceous - carbonated angular fragments of quartz and sediments and diorite malachite 297-298									
299.0	308.7	2 2g	mafic partly altered diorite. 305.3 3/2" stringer epidote cpy. 30° 305.8 1/16" " " " 25° 308.7 contact @ 40° associated cpy and epidote.	cpy.								
308.7	322.0	4 g.	micaceous det. py. cpy. sample 310-315 315-320	cpy	.3							
						9342	50	5.0	.15			
						9343	50	5.0	.19			

FOOTAGE			ROCK CLASSIFICATION <small>EPID. DIOP. GARN. SERP. QTZ/SIL. ACTING TREMO. CHLO. CRYSTALLINE. SHEARING VEINS FRACTURING. FOLIATION GRAIN SIZE. TEXTURE</small>	MINERALIZATION		ASSAY DATA						
From	To			TYPE	%	SAMPLE NO.	WIDTH	RECOV.	%Cu	%Fe	MOLY	AU AG
			311-313 broken core.									
323.0	324.7	39	lt. moderate printing (2.5" core piece). pitile bright green epidote. - diss. epy.	epy.	1/2							
			323.0 1/16" print + epy. 10"									
			324.0 1/32" ————— 10"									
			327.5 several hairline str. epy. 15"									
			328-330 diss. epy. in core	epy.	1/10							
			335.5 1/8" str. epy. 35"	epy.								
			337.0 1/16" ————— + chlorite. 20"	epy.								
			337.4 1/8" str. epy. br. 35"	epy. br.								
			338.5 1/32" str. br. epy. 40"									
			339.3 1/2" epy. on jt.									
			339.8 1/2" epy. on jt.									
			340.6 blebs epy. in core.									
			samples									
			320-325			9320	5.0		.60			
			325-330.2			9325	5.2		.55			
			330.2-335			9326	4.8		.45			
			335-340			9327	5.0		.85			
			340-345			9328	5.0		.44			
346.7	355.0	39	epy. on jt. and diss. blebs.	epy.	1/2							

NEW IMPERIAL MINES LIMITED
 MINING DIVISION - WHITEHORSE
 YUKON TERRITORY

Hole No. 45-2 Page No. 89

FOOTAGE			ROCK CLASSIFICATION <small>EPID. DIOP. GARN. SERP. QTZ/SIL. ACTING TREMO. CHLO. CRYSTALLINE. SHEARING. VEINS. FRACTURING. FOLIATION. GRAIN SIZE. TEXTURE</small>	MINERALIZATION		ASSAY DATA						
From	To			TYPE	%	SAMPLE NO.	WIDTH	RECOV.	%CU	%FE	MOLY	AU/AG
3550	3600	30°	minors disis - epy - mainly on of near joint	epy	<1%							
			360-361 5 min. x 1/16" epy 70-80°	epy								
			359-2 1/2" epy on joint. 20°	epy								
			359.0 " " " 20°	epy								
			361.5 bleb epy. w 30° - epidote.									
3600	3700	20°	conc. bleached - some areas of (altered sil?) also epy on several joints.	epy	3/10							
			sample 359-364			9349		.43				
			364-369			9350		.37				
			369-374			9351		.73				
			374-379			9352		.42				
			379-384			9353		1.13				
3840	3900	40°	shilled dykelet									
3900	3950	30°	inclusion of 1/2" of red disis epy (30°)									
			388-389									

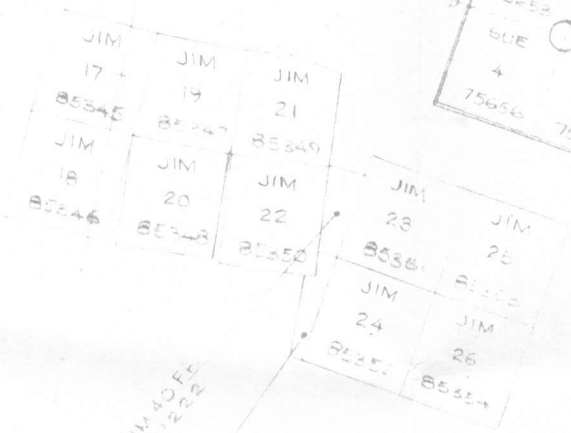
FOOTAGE			ROCK CLASSIFICATION <small>EPID. DIOP. GARN. SERP. QTZ/SIL. ACTINO TREMO. CHLO. CRYSTALLINE. SHEARING. VEINS. FRACTURING. FOLIATION. GRAIN SIZE. TEXTURE</small>	MINERALIZATION		ASSAY DATA						
From	To			TYPE	% Cu	SAMPLE NO.	WIDTH	RECOV.	% Cu	% Fe	MOLY	AU. AG
301.4	303.5	1g	(with 3rd - start and finish of section 2 nd disc. py.									
403.0	407.0	3 ^d	1% quartz 403.0 - 2 1/2" also open on jts some fissile - speaks disc betwite 407.0 1/2" on jt	403	bc/epy	1/2						
427.0	433.1	3 ^d	good 3/4 epy on jts (220-300 231 core leached.									
432.1	457.0	2	89 weak epy interbedded on joints. some disc. epy good coating 340-457.0. v. good 437-457.		epy	.3						
	457		Kate ends.									
			sample	427-432	4351	5.0		1.18				
				432-437	4355	5.0		.58				
				437-442	4356	5.0		.31				
				442-447	4357	5.0		.19				
				447-452	4358	5.0		.21				
				452-457	4359	5.0		.14				

WHITEHORSE

REFERENCE

TRAVELER

CLAIMS



JIM 40 FT
75222
JIM 48 FT
75220

CARCROSS ROAD

WHITEHORSE COLLEGE LAMP, LTD
 CLAIMS LOCATION MAP
 DEC. 15, 1971
 P. W. H. H. H. H. H.
 1" = 1/2 MILE

