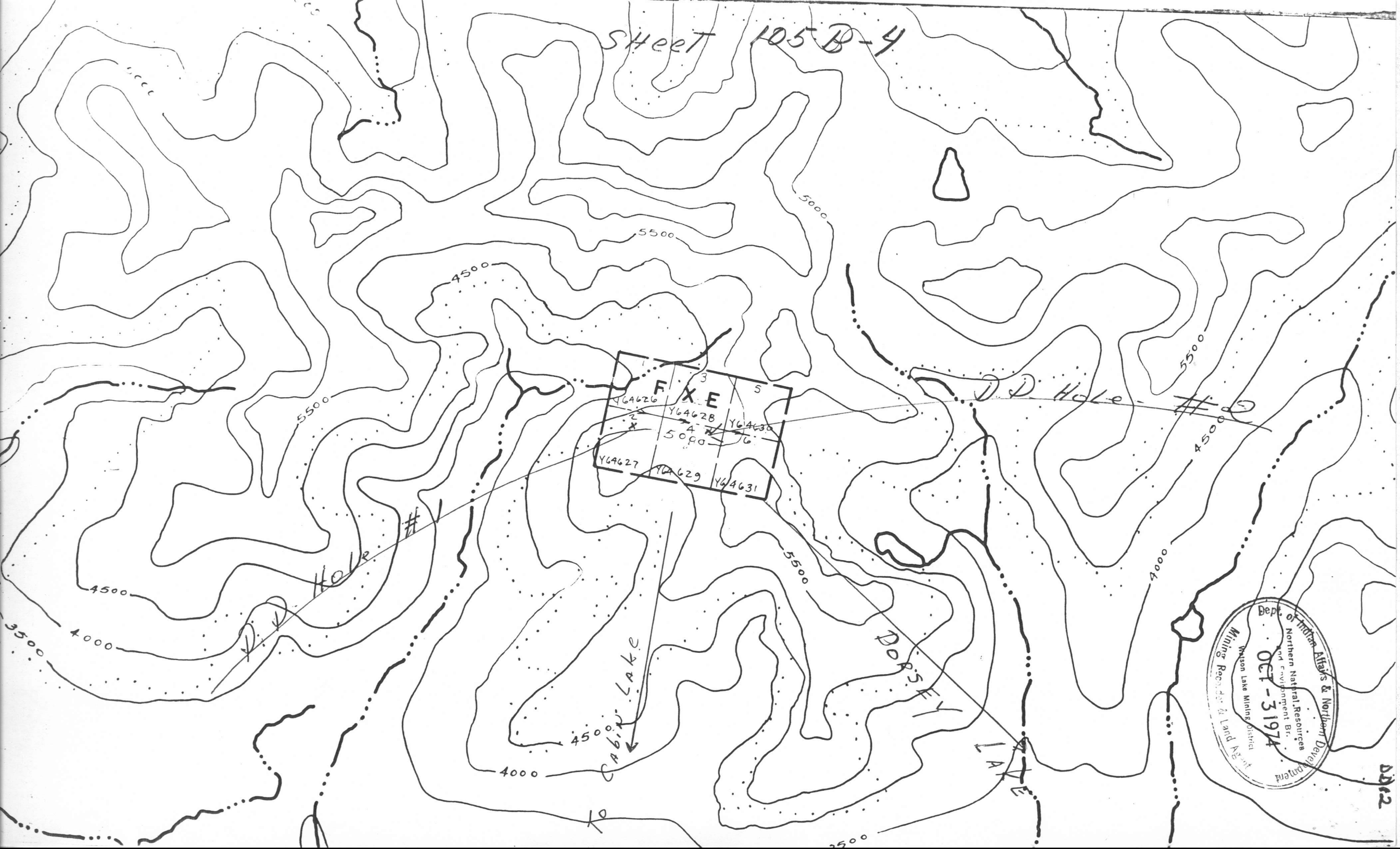
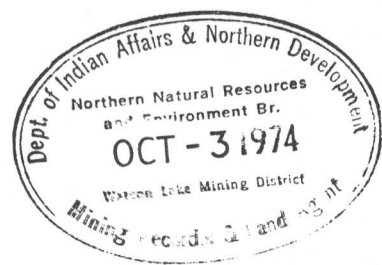


Sheet 105 B-4



Dept. of Indian Affairs & Northern Development  
 Northern Natural Resources and Environment Br.  
 Mining Records & Land Agent  
 Pelly Lake Mining District  
 OCT-31974

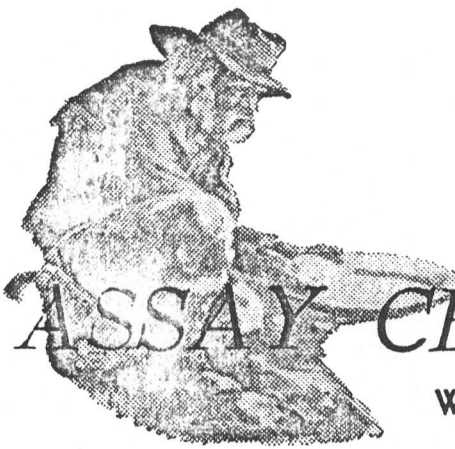


DDH # 1-74

Carlin Lake

DATE. JULY 11, 1974.

FILE NO. 8335-9



# ASSAY CERTIFICATE

WHITEHORSE ASSAY OFFICE LTD.  
 BOX 4518 WHITEHORSE Y. T.  
 PHONE 667 2694 Y1A 2R8

SAMPLE RECEIVED FROM

CYPRESS RESOURCES LTD.

SAMPLE NO.	GOLD Oz. Per Ton	SILVER Oz. Per Ton	COPPER	NICKEL			
0 - 5'		1.94	2.70				
3'-12'	TR	.64	.60	.01		-10' average	
12'-22'	TR	.18	.20	TR			
22'-27'	TR	.54	.78	TR			
27'-31'	TR	.18	.17	TR			
31'-40'	TR	.14	.14	.01			
40'-48'	TR	TR	.02	.01			
48'-56'	TR	.32	.03	TR			
56'-68'	TR	TR	.01	TR			
68'-75'	TR	TR	.01	TR			

Ordered by - Mr. F. Schornig

ASSAYER. K. Hoyleland for M. Apaldin

1974 -

Lab. No.



# ASSAY CERTIFICATE

DATE. JULY 5, 1974.

FILE NO. 8301-1

WHITEHORSE ASSAY OFFICE LTD.  
BOX 4518 WHITEHORSE Y. T.  
PHONE 667 2694 Y1A 2R8

SAMPLE RECEIVED FROM


CYPRESS RESOURCES LIMITED

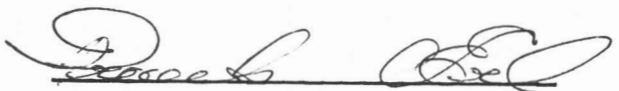
SAMPLE NO.	GOLD Oz. Per Ton	SILVER Oz. Per Ton	COPPER	NICKEL				
0-3' 1301	TR	1.94	2.70	.01				

ASSAYER. *K. Hylana for B. Spalding*

DRILL HOLE LOG

Property FXE #4 Latitude 60°00' to 60°15' Hole No. #1  
 Location Dorsey Lake Completion 15th July, 1974 Depth 75'  
Cabin Lake  
 Date Drilled June 30, 1974 Elevation 5000' Logged by Frank Erl, Ferdinand Schomig

Footage		Description	Analysis					
From	To		Pb. P.P.M.	Zn. P.P.M.	Cu. P.P.M.	Silver	Nickel	Gold
0'	3'				2.70	1.94		
3'	12'				.60	.64	.01	TR
12'	22'				.20	.18	TR	TR
22'	27'				.78	.54	TR	TR
27'	31'				.17	.18	TR	TR
31'	40'				.14	.14	.01	TR
40'	48'				.02	TR	.01	TR
48'	56'				.03	.32	TR	TR
56'	68'				.01	TR	TR	TR
68'	75'				.01	TR	TR	TR

  
 Frank Erl for  
 Cypress Resources Ltd.

DRILL HOLE LOG

Property FXE #5 Latitude 60°00' to 60°15' Hole No. #2  
 Location Dorsey Lake Completion 15th July, 1974 Depth 90'  
Cabin Lake  
 Date Drilled June 30th, 1974 Elevation 4,500 to 5,000 Logged by Frank Erl, Ferdinand Schomig

Footage		Description	Analysis				
From	To		Pb. P.P.M.	Zn. P.P.M.	Cu. P.P.M.		
0'	50'	D.D. Hole #2  Core placed in boxes on site for examination by Geologist, no assay taken to date.					



*Frank Erl*  
 Frank Erl for  
 Cypress Resources Ltd.

091022