

MINING CORPORATION LIMITED

*Suite 303, 535 Thurlow Street, Vancouver, B.C. V6E 3L2
Telephone 689-0046, Telex 04-55290*

November 26, 1976.



Mr. V.W. Johanson
Mining Recorder
P.O. Box 269
Watson Lake, Yukon

Dear Mr. Johanson:

In answer to your first question, in your letter dated October 6th, regarding the location of the diamond drill core, I would like to inform you that all the core is stored on racks located at the main camp on the Bailey Property; only the core which was sampled and assayed was sent to the mine townsite at Tungsten.

In answer to your second question, regarding assays of the core I wish to point out that no core for this hole was assayed as there were no significant mineral intersections in this hole.

I have just returned from holidays and so the reason for not answering your letter sooner for which I am sorry.

I hope this communication and my recent telephone conversation with one of your assistants will satisfactorily provide the information you require.

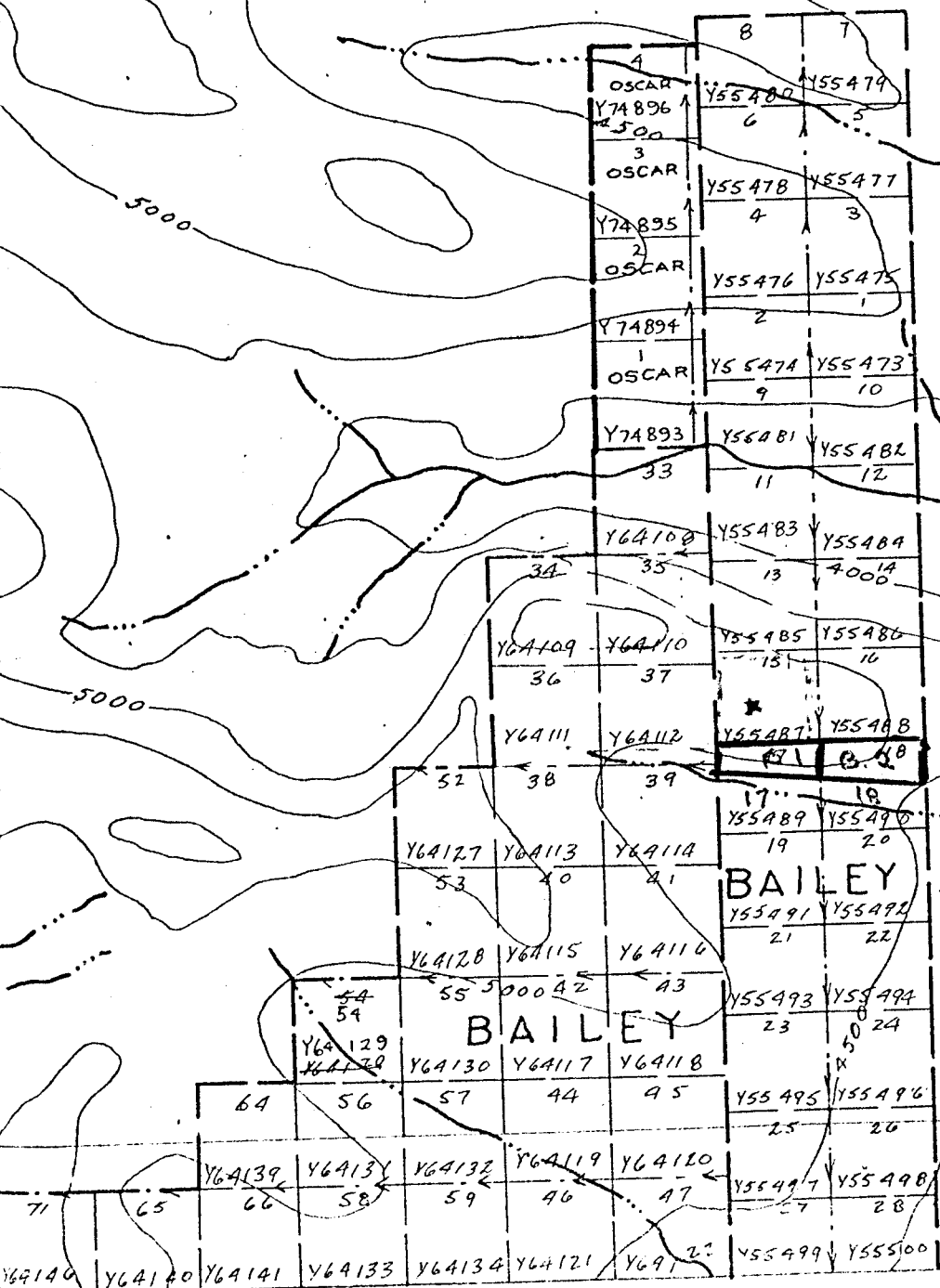
Yours sincerely,

CANADA TUNGSTEN MINING CORPORATION LTD.

Lomer J. D'Aigle
Lomer J. D'Aigle
Exploration Manager

LJD/kh

091086




SHEET 105-A-15

091086

CLAIM SHEET
105-A-15

BAILEY 15 MC
Y 55487

BAILEY 16
Y 55488

 D.D.H. 75-33



B1 FRACTION MC
Y 93791

B2 FRACTION MC
Y 93792

BAILEY 17
Y 55489

BAILEY 18
Y 55490

D.D.H. 75-33, LOCATION MAP.

LAT 60° 46' N, LONG 128° 53' W

091096



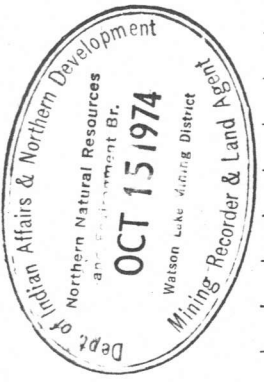
Location 1+87 (North) (South) ✓
 Location 4+79 (East) (West) ✓
 Baseline No. B ZONE NORTH
 Dip at Collar 65°
 Bearing Astr. 210°
 Assumed Mag. Decl'n 33° Elevation at Collar 4520

ACID TESTS	FOOTAGE	DIP ANGLE

DIAMOND DRILL LOG AND SAMPLE RECORD

File Code _____ D.D.H. No. 74-1 Page 1
 NR CORE
 Property Name BAILEY GROUP Started AUG. 2, 1974
 Footage Drilled 108' Finished AUG. 3, 1974
 Province YUKON Township 105-A-15
 Logged by D.C. WAY Claim No. BAILEY #15

FOOTAGE FROM	FOOTAGE TO	LENGTH	DESCRIPTION		FROM	TO	WIDTH	SAMPLE NUMBER	WO ₃ %	COPPER % CU	GOLD OZ. AU	SILVER OZ. AG			RUN	REC.	
			FORMATION	DETAILS													
0	6	6	casing														
6	27	21	limy chert	interbedded dark, biotitic quartzite and grey-green chert.													
				broken ground	6	10											
				pegmatite dyke (?)	21	23											
27	83	56	marble	white to grey banded marble with occasional cherty skarn horizons up to 18" thick and garnet diopside lenses up to a few inches thick.													
83	99	16	skarn	garnet-diopside skarn with fine-grained scheelite.	83	88											
				crudely banded diopside - pyrobiotite skarn with fine- to medium-grained scheelite.	88	99											
99	108	9	granodiorite	granodiorite chill margin with minor disseminated pyrochite, chalcopyrite and scheelite	99	106											
				medium-grained hornblende biotite granodiorite	106	108											



Dip at Collar _____
 Bearing _____
 Mag. Decl'n _____
 Baseline _____
 Acid Tests _____

Notes:

DIAMOND DRILL HOLE

Page 2 DDH. 74-1 DD-10

LOG AND SAMPLE RECORD

CANADA TUNGSTEN MINING CORPORATION LTD.

ASSAY INTERVAL LOG

Property _____ Started _____
 Location _____ Finished _____
 Logged by _____ Footage Drilled _____

FOOTAGE		LENGTH	FORMATION	DESCRIPTION	SAMPLE NO.	FOOTAGE		ASSAY		LENGTH x ASSAY		AVERAGE ASSAY	
FROM	TO					FROM	TO	LENGTH	% WO ₃	% Cu	% WO ₃	% Cu	% WO ₃
91.0	93.0	2	11757	banded diopside - pyroxhite stam. Banding A.C.A. $\approx 75^\circ$. Contains pods of quartz with dissem. chalc. Minor garnet. Scheelite is fine grained.				2.0	1.71		3.42		
93.0	95.0	2	11758	massive pyroxhite containing quartz pods with dissem. chalc. Minor diopside. Scheelite is fine grained + a beadant.				2.0	1.78		3.56		
95.0	97.0	2	11759	pyroxhite with quartz pods containing dissem. chalc. Minor diopside. Scheelite is fine grained.				2.0	0.68		1.36		
97.0	100.0	3	11760	pyroxhite with quartz pods containing dissem. chalc. Minor diopside and garnet. Scheelite is fine to medium grained.		97.0	99.0	3.0	1.30		3.90		
				chill margin of granodiorite with pyroxhite stringers		99.0	100.0						
100.0	102.0	2	11761	chill margin of granodiorite. Contains some small stringers of pyroxhite with minor chalc. Only occasional crystals of ischcolite observed.				2.0	0.30		(omit)		
						Σ	17		Σ	19.58			
									$\frac{19.58}{17}$		1.15 % over 17'		

Dip at Collar _____
 Bearing _____
 Mag. Decl'n _____
 Baseline _____
 Acid Tests _____

Notes:

DIAMOND DRILL HOLE

Page 7 DDH 14-2 DD-16
 N _____ E _____

LOG AND SAMPLE RECORD

ASSAY INTERVAL CANADA TUNGSTEN MINING
 LOG CORPORATION LTD.

Property _____ Started _____
 Location _____ Finished _____
 Logged by _____ Footage Drilled _____

FOOTAGE		LENGTH	FORMATION	DESCRIPTION	SAMPLE NO.	FOOTAGE		ASSAY		LENGTH x ASSAY		AVERAGE ASSAY	
FROM	TO					FROM	TO	LENGTH	% WO ₃	% Cu	% WO ₃	% Cu	% WO ₃
102	104	2	11762	marble garnet diopside skarn. Coarse calcite & epidote from 103/0 to 103/3 assoc- iated with small fractures. Scheelite is fine to coarse grained.		102/0	102/3	2	0.78		1.56		
						102/3	104/0						
104	105	1	11763	gray & white banded marble. Banding A.C.A. ≈ 50°				1	0.14		0.14		
105	106.5	1.5	11764	garnet diopside skarn. Minor calcite. Cherty band from 105/11 to 106/11. Minor, fine grained scheelite.				1.5	0.21		0.31		
106.5	108.0	1.5	11765	gray & white banded marble. Banding A.C.A. ≈ 65°				1.5	0.14		0.21		
108.0	110.0	2	11766	garnet diopside skarn. Minor calcite in small crystals and in one fracture 1/8" in width. Minor fine grained scheelite.				2.0	0.57		1.14		
110.0	110.5	0.5	11767	garnet diopside skarn. Contains minor calcite and scheelite crystals up to 3mm which fluoresce with both the characteristic blue-white colour and also a lime-green colour, both colours occurring within a single crystal - possible S.S. of scheelite & poaseelite?				0.5	4.34		2.17		
110.5	112.5	2.0	11768	garnet-diopside skarn. Minor calcite. Minor fine grained scheelite, most of which fluoresces the lime green colour.				2.0	0.32		0.64		

Dip at Collar _____
 Bearing _____
 Mag. Decl'n _____
 Baseline _____
 Acid Tests _____

Notes:

DIAMOND DRILL HOLE

Page 2 DDH 77-2 DD-10
 N _____ E _____
 Property _____ Started _____
 Location _____ Finished _____
 Logged by _____ Footage Drilled _____

LOG AND SAMPLE RECORD

CANADA TUNGSTEN MINING CORPORATION LTD.

ASSAY INTERVAL LOG

FOOTAGE		LENGTH	FORMATION TICKET	DESCRIPTION	SAMPLE NO.	FOOTAGE		ASSAY		LENGTH x ASSAY		AVERAGE ASSAY	
FROM	TO					FROM	TO	LENGTH	% WO ₃	% Cu	% WO ₃	% Cu	% WO ₃
112.5	114.5	2.0	11769	garnet-diopside skarn. Minor calcite in separate crystals and as small fracture fillings. Minor, fine grained scheelite.				2.0	0.32		0.64		
114.5	116.0	1.5	11770	garnet diopside skarn. Minor coarse grained calcite + associated epidote. white & grey garnetiferous marble.	114/6	115/6	1.5	0.23		0.34			
116.0	117.5	1.5	11771	garnet diopside skarn. Minor epidote and calcite as small crystals & fracture fillings. Fine grained scheelite, in part fluorescing lime green.	115/6	116/6	1.5	0.54		0.81			
						Σ 15.5				7.96			
								7.96 / 15.5 = 0.51%		over 15.5 f			
117.5	120.5	3.0	11772	Banded cherty skarn. Banding N.C.A. ≈ 55°. Contains detrital horizons up to 1/4" in width. Green diopside bands up to 1/2" which contain fine grained scheelite. Minor disseminated pyroxene. Beginning of granulite chill margin. Majority of rock is siliceous in appearance, grey in colour, and aphanitic and contains no scheelite.			3.0	0.17		(omit)			
						INTERVAL 117.5 + 123.0 could be garnet & cherty skarn from 118' to 121'							
120.5	123.5	3.0	11773	same as above. Some of diopside bands are garnetiferous and up to 2" in width. Banding N.C.A. ≈ 60° chilled granulite. Contains some diopside & blebs of pyroxene.	120/6	123/6	3.0	0.17		(omit)			
123.5	126.5	3.0	11774	same as (11772) but contains some intervals of m.g. hornblende biotite granulite several inches in width.	123/6	126/6	3.0	0.28		(omit)			

Location 1+87 (North) (South)
 Location 4+79 (East) (West)
 Baseline No. '3' ZONE NORTH
 Dip at Collar 55°
 Bearing Astr. 158°
 Assumed Mag. Decl'n 33° Elevation at Collar 4520'

ACID TESTS	FOOTAGE	DIP ANGLE

091096
**DIAMOND DRILL LOG
 AND
 SAMPLE RECORD**

File Code _____ D.D.H. No. 74-3
BQ CORE
 Property Name BAILEY GROUP
 Footage Drilled 126/6
 Province YUKON
 Logged by D.C. WAY

Started AUG. 5, 1974
 Finished AUG. 6, 1974
 Township 105-A-15
 Claim No. BAILEY #15

FOOTAGE FROM	FOOTAGE TO	LENGTH	DESCRIPTION		FROM	TO	WIDTH	SAMPLE	WO ₃	COPPER	GOLD	SILVER	RUN	REC.
			NUMBER	%				% CU	OZ. AU	OZ. AG				
0	6	6	casing											
6	38	32	limy chert	interbanded dark, biotitic quartzite and grey-green chert. Frequent broken ground throughout interval.										
38	113	75	marble	white to grey banded marble with occasional lenses of garnet-diopside skarn up to a few inches in width.										
				garnet-diopside skarn with minor finely dissem. schaalite.	102	103								
113	114/6	1 1/2	skarn	pyrrhotite-diopside skarn with finely dissem. schaalite.										
114/6	126/6	12	granodiorite	siliceous granodiorite chill margin medium-grained hornblende biotite granodiorite	114/6	118								
					118	126/6								



DIAMOND DRILL HOLE LOG AND SAMPLE RECORD

Page 1 DDH 74-3

Dip at Collar _____
Bearing _____
Mag. Decl'n _____
Baseline _____
Acid Tests _____

Notes: ASSAY INTERVAL LOG
CANADA TUNGSTEN MINING CORPORATION LTD.

Property _____ Started _____
Location _____ Finished _____
Logged by _____ Footage Drilled _____

FOOTAGE		LENGTH	FORMATION TICKET NO.	DESCRIPTION	SAMPLE NO.	FOOTAGE		LENGTH	ASSAY		LENGTH x ASSAY		AVERAGE ASSAY	
FROM	TO					FROM	TO		% WO ₃	% Cu	% WO ₃	% Cu	% WO ₃	% Cu
112.0	113.0	1.0	11775	white and grey banded marble. Banding N.E.A. 25°				1.0	0.14	(om. t)				
113.0	114.0	1.0	11776	marble garnet diopside schorn. Contains small stringers of calcite + fine grained schaeelite		113/0	113/2	1.0	0.24	0.24				
114.0	114.5	0.5	11777	pyroxenite mixed with siliceous chill margin of granodiorite. Contains fine grained schaeelite.				0.5	0.26	0.13				
114.5	117.5	3.0	11778	mg. hornblende biotite amphibolite with chilled bands. Contains minor fig. schaeelite.				3.0	0.22	0.66				
						Σ 4.5					1.03			
									1.03 4.5		0.23% over 4.5 ft.			

091096

Location 1+87 (North) (South)

Location 4+79 (East) (West)

Baseline No. 'B' ZONE NORTH

Dip at Collar 55°

Bearing Astr. 95°

Assumed Mag. Decl'n 33° Elevation at Collar 4520'

ACID TESTS	FOOTAGE	DIP ANGLE

DIAMOND DRILL LOG AND SAMPLE RECORD

File Code _____

D.D.H. No. 74-5
BQ CORE

Page 1

Property Name BAILEY GROUP

Started AUG. 8, 1974

Footage Drilled 117'

Finished AUG. 9, 1974

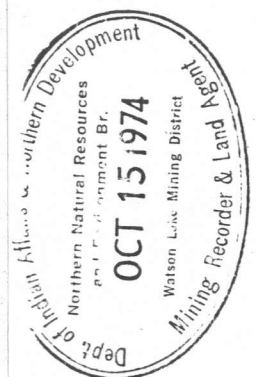
Province YUKON

Township 105-A-15

Logged by D.C. WAY

Claim No. BAILEY #15

FOOTAGE FROM	FOOTAGE TO	LENGTH	DESCRIPTION		FROM	TO	WIDTH	SAMPLE NUMBER	WO ₃ %	COPPER % CU	GOLD OZ. AU	SILVER OZ. AG	RUN	REC.
			FORMATION	DETAILS										
0	8	8	casing											
8	39	31'	limy chert	interbanded dark, biotitic quartzite and grey-green chert										
39	96 1/6	57 1/6	marble	fractured ground white to grey banded marble with occasional lenses of garnet-diopside skarn up to a few inches in width	8	17								
				marble with intercalated cherty skarn and garnet-diopside skarn.	42	47								
96 1/6	97	1/2	skarn	diopside skarn with very minor fine-grained scheelite										
97	117	20	granodiorite	medium-grained hornblende biotite granodiorite.										



Location 6700 (North) (South) ✓
 Location 6713 (East) (West)
 Baseline No. 3' ZONE NORTH
 Dip at Collar 90°
 Bearing Astr. _____
 Assumed Mag. Decl'n 33° Elevation at Collar 4850'

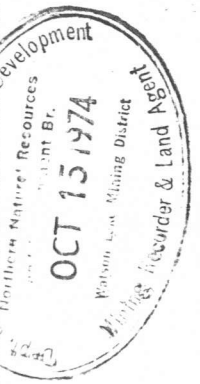
ACID TESTS	FOOTAGE	DIP ANGLE

DIAMOND DRILL LOG AND SAMPLE RECORD

File Code _____ D.D.H. No. 74-6
BQ CORE
 Property Name BAILEY GROUP
 Footage Drilled 152/6
 Province YUKON
 Logged by D.C. WAY

Page 1
 Started AUG. 15, 1974
 Finished AUG. 17, 1974
 Township 105-A-15
 Claim No. BAILEY #15

FOOTAGE FROM	FOOTAGE TO	LENGTH	DESCRIPTION		FROM	TO	WIDTH	SAMPLE NUMBER	WO ₃ %	COPPER % CU	GOLD OZ. AU	SILVER OZ. AG			RUN	REC.	
			FORMATION	DETAILS													
0	5	5	casing														
5	86	81	dark quartzite	dark, sugary-textured biotitic quartzite. Thin banding imparted by biotite concentrations. Contains occasional thin bands of grey-green chert and limy diopside skarn													
				C.B.A. at 7' = 30° C.B.A. at 33' = 50° C.B.A. at 69' = 60°													
86	152/6	66/6	limy chert	interbanded dark, biotitic quartzite and grey-green chert													
				CBA at 118 = 50° CBA at 126 = 50°													
152/6	154	1 1/2	skarn	garnet-diopside skarn with thin calcite fracture-fillings. Minor fine- to medium-grained scheelite													
154	170	16	marble	grey to white banded													



Location.....(North) (South)

Location.....(East) (West)

Baseline No.....

Dip at Collar.....

Bearing Astr.....

Assumed Mag. Decl'n..... Elevation at Collar.....

ACID TESTS	FOOTAGE	DIP ANGLE

DIAMOND DRILL LOG AND SAMPLE RECORD

File Code.....

D.D.H. No. 74-6

Page 2

Property Name.....

Footage Drilled.....

Province.....

Logged by.....

Started.....

Finished.....

Township.....

Claim No.....

FOOTAGE FROM	FOOTAGE TO	LENGTH	DESCRIPTION		FROM	TO	WIDTH	SAMPLE NUMBER	WO ₃ %	COPPER % CU	GOLD OZ. AU	SILVER OZ. AG	RUN	REC.
			FORMATION	DETAILS										
				with minor epidote + thin cc stringers discordant with the banding (shown by alter- nating garnet and diopside rich bands) - minor fig. scheelite										
254.5	258.5	4.0	1036	cherty garnet - diopside skarn with minor epidote + cc (some in thin stringers) - minor scheelite										
258.5	261.5	3.0	1037	crudely banded cherty garnet - diopside skarn, minor cc (some in stringers) and epidote. fig. to mig. scheelite										
261.5	264.5	3.0	1038	crudely banded garnet - diopside skarn - minor cc + epidote. Cherty in places. - fig. to mig. scheelite.										
264.5	267.5	3.0	1039	garnet - diopside skarn										

CBA @ 253 = 70°

091096

Location 6+00 (North) (South) ✓
 Location 6+13 (East) (West) ✓
 Baseline No. 'B' ZONE NORTH
 Dip at Collar 30°
 Bearing Astr. 210°
 Assumed Mag. Decl'n 33° Elevation at Collar 4850'

ACID TESTS	FOOTAGE	DIP ANGLE

DIAMOND DRILL LOG AND SAMPLE RECORD

File Code _____ D.D.H. No. 74-7
BQ CORE
 Property Name BAILEY GROUP
 Footage Drilled 328'
 Province YUKON
 Logged by D.C. WAY

Page 1
 Started AUG. 17, 1974
 Finished AUG. 20, 1974
 Township 105-A-15
 Claim No. BAILEY #15

FOOTAGE FROM	FOOTAGE TO	LENGTH	DESCRIPTION		FROM	TO	WIDTH	SAMPLE NUMBER	WO ₃ %	COPPER % CU	GOLD OZ. AU	SILVER OZ. AG			RUN	REC.	
			FORMATION	DETAILS													
0	6	6	casing														
6	113	107	dark quartzite	dark, fine grained biotitic quartzite. Slight banding imparted by biotite. Minor intercalated green cherty skarn.													
				'CBA' at 73' = 50°													
				CBA at 96' = 40°													
				broken ground	6	53											
				" "	85	87											
				" "	108	110											
113	293	180	limy chert	interbanded dark, biotitic quartzite and grey-green chert with occasional thin dolomitic fracture-fillings													
				CBA at 115' = 45°													
				CBA at 162' = 45°													
				CBA at 265' = 25°													
				broken ground	130	131											
				" "	135/6	136/6											
				" "	139	140											
				" "	146	149											



Location 6700 (North) (South)
 Location 6713 (East) (West)
 Baseline No. 8' 20ft NORTH
 Dip at Collar 65°
 Bearing Astr. 30°
 Assumed Mag. Decl'n 33° Elevation at Collar 4850'

ACID TESTS	FOOTAGE	DIP ANGLE

DIAMOND DRILL LOG AND SAMPLE RECORD

File Code _____ D.D.H. No. 74-9 55-10
Page 1
BQ CORE
 Property Name BAILEY GROUP Started AUG 24, 1974
 Footage Drilled 417' Finished AUG. 26, 1974
 Province YUKON Township 105-A-15
 Logged by D.C. WAY Claim No. BAILEY #15

FOOTAGE FROM	FOOTAGE TO	LENGTH	DESCRIPTION		FROM	TO	WIDTH	SAMPLE NUMBER	WO ₃ %	COPPER % CU	GOLD OZ. AU	SILVER OZ. AG	RUN	REC.
			FORMATION	DETAILS										
0	10	10	casing											
10	150	140	dark quartzite	dark, biotitic quartzite with occasional small bands of grey-green chert and diopside skarn and thin calcite fracture fillings. CBA at 29' = 15° CBA at 50' = 40° CBA at 115' = 35° CBA at 143' = 30°										
				broken ground	15	16								
				" "	58	66								
150	232	82	limy chert	interbanded dark, biotitic quartzite and limy grey-green chert. Within chert horizons are bands of mixed calcite, garnet and diopside (with occasional disseminated pyrrhotite) CBA at 150' = 35°										



Location 6+00 (North) (South)

Location 6+13 (East) (West)

Baseline No. 'B' ZONE NORTH

Dip at Collar 65°

Bearing Astr. 345°

Assumed Mag. Decl'n 33° Elevation at Collar 4850'

ACID TESTS	FOOTAGE	DIP ANGLE

DIAMOND DRILL LOG AND SAMPLE RECORD

File Code 091094

D.D.H. No. 74-10
BQ CORE

Page 1

Property Name BAILEY GROUP

Started AUG. 27, 1974

Footage Drilled 337'

Finished AUG. 29, 1974

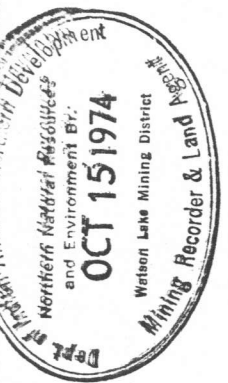
Province YUKON

Township 105-A-15

Logged by D. WAY

Claim No. BAILEY #15

FOOTAGE FROM	FOOTAGE TO	LENGTH	DESCRIPTION		FROM	TO	WIDTH	SAMPLE NUMBER	WO ₃ %	COPPER % CU	GOLD OZ. AU	SILVER OZ. AG	RUN	REC.
			FORMATION	DETAILS										
0	10	10	casing	slightly banded										
10	90	80	dark quartzite	dark, biotitic quartzite with occasional small bands of diopside stann and grey green chert. - frequent broken ground throughout interval CBA at 39' = 20° CBA at 76' = 50°										
90	173	83	limy chert	inter banded dark, biotitic quartzite and grey-green chert with occasional small limy diopside stann lenses.										
173	180	7	marble	white to grey banded, garnetiferous and slightly diopside marble.										
180	184	4	limy chert	interbanded dark, biotitic quartzite and grey-green chert										



DIAMOND DRILL HOLE

LOG AND SAMPLE RECORD

CANADA TUNGSTEN MINING CORPORATION LTD.

Page 103,095 N 98,593 E

Property Bailey Group Started Oct. 9, 1975.

Location Yukon Finished Oct. 10, 1975.

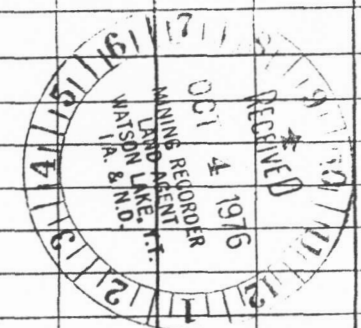
Logged by G. Abbott Footage Drilled 409

Notes:

Dip at Collar 43°
 Bearing 280°
 Mag. Decl'n 32°
 Baseline Underhill Grid
 Acid Tests None taken

NQ core
 Elevation at collar 5190'

FOOTAGE		LENGTH	FORMATION	DESCRIPTION	SAMPLE NO.	FOOTAGE		LENGTH	ASSAY		LENGTH x ASSAY		AVERAGE ASSAY	
FROM	TO					FROM	TO		% WO ₃	% Cu	% WO ₃	% Cu	% WO ₃	% Cu
0	395	395	DARK	Dark, fine-grained, sugary-textured, biotictic quartzite.										
			QUARTZITE	Leucocratic intervals up to a few feet thick are composed of white quartz. Purplish biotitic intervals carry minor disseminated pyrrhotite. Occasional thin bands of green and white chert are interbanded with biotitic quartzite. Average C.B.A. is 60° - 70°.										
385	395	10	PEGMATITE	Leucocratic, white, massive pegmatite.										
395	409	14	GRANO-DIORITE	Medium-grained, hornblende-biotite granodiorite..										



Dip at Collar 43°
 Bearing 280°
 Mag. Decl'n 32°
 Baseline Underbill Grid
 Acid Tests None taken

Notes:

NQ core
 Elevation at collar 5190'

DIAMOND DRILL HOLE

LOG AND SAMPLE RECORD

CANADA TUNGSTEN MINING
 CORPORATION LTD.

Page 1

U.D.N. 72-22

00-10

103,095 N 98,593 E

Property Bailey Group

Started Oct. 9, 1975.

Location Yukon

Finished Oct. 10, 1975.

Logged by G. Abbott

Footage Drilled 409

FOOTAGE		LENGTH	FORMATION	DESCRIPTION	SAMPLE NO.	FOOTAGE		LENGTH	ASSAY		LENGTH x ASSAY		AVERAGE ASSAY	
FROM	TO					FROM	TO		% WO ₃	% Cu	% WO ₃	% Cu	% WO ₃	% Cu
0	395	395	DARK	Dark, fine-grained, sugary-textured, biotitic quartzite.										
			QUARTZITE	Leucocratic intervals up to a few feet thick are composed of white quartz. Purplish biotitic intervals carry minor disseminated pyrrhotite. Occasional thin bands of green and white chert are interbanded with biotitic quartzite. Average C.B.A. is 60° - 70°.										
385	395	10	PEGMATITE	Leucocratic, white, massive pegmatite.										
395	409	14	GRANO-DIORITE	Medium-grained, hornblende-biotite granodiorite.										

