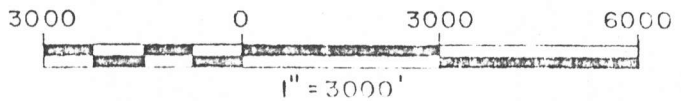
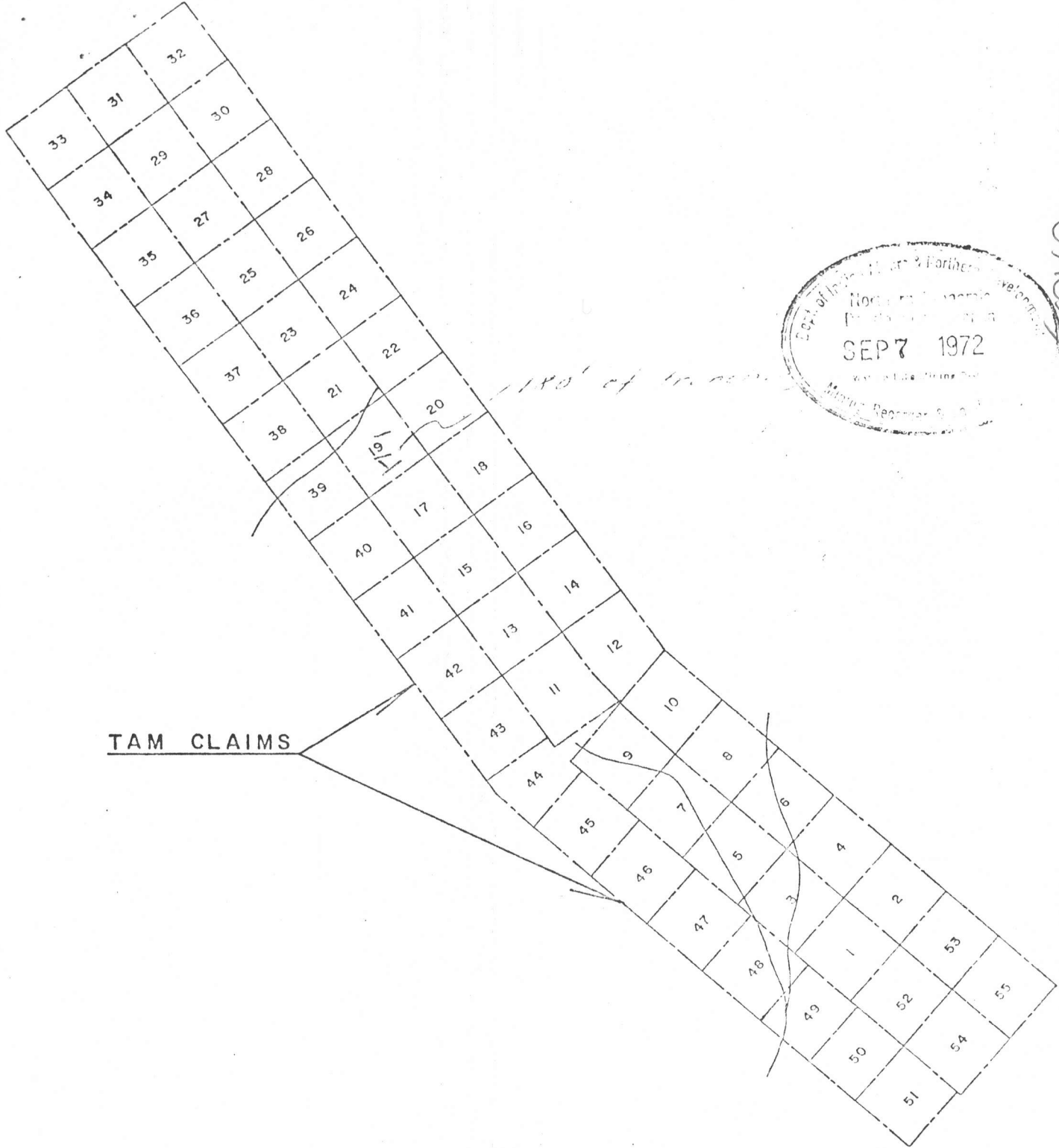


091093



180' of ...

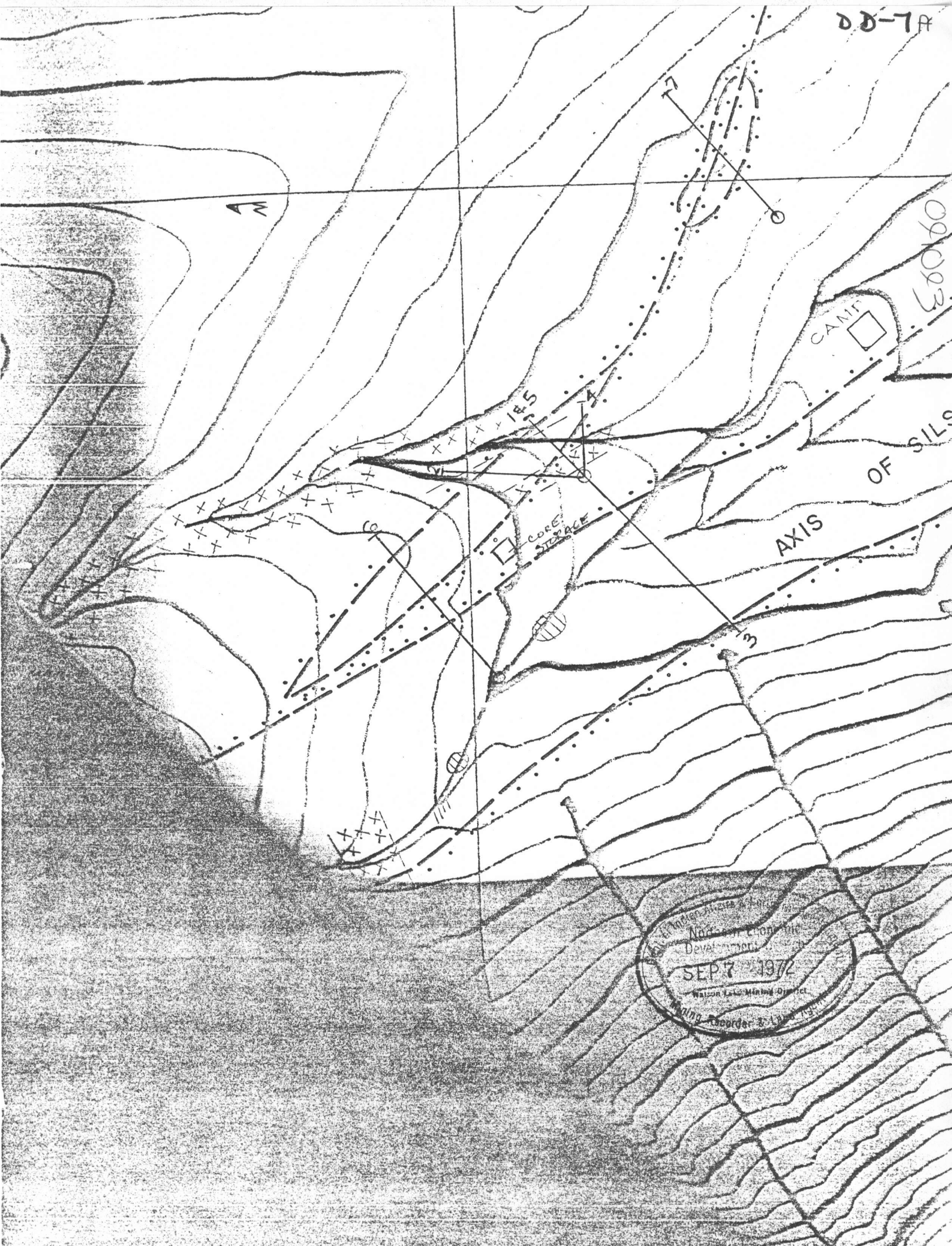
TAM CLAIMS



Getty Mines, Limited
TURNER PROPERTY
N.W.T. & YUKON TERRITORY

TAM CLAIMS

DRAWN BY: T.M.	JOB No	FIG No.
CHECKED BY	3101	
DATE SEPT. 1, 1972		



DDH #1 NQ 45° Dip

- 0-21 O.B.
- 21-22 GRANITIC DYKE
- 22-23 DIOPSIDE MARBLE
- 23-28 GRANITIC DYKE
- 28-42.5 META LIMESTONE
- 42.5-52.5 HYBRID ZONE
- 52.5-155 HORNBLENDE BIOTITE QM
- 155-160 GRANITIC DYKE
- 160-161 CALC-SILICATE HORNFELS
- 161-166 GRANITIC DYKE
- 166-171 CALC SILICATE HORNFELS
- 171-178 GRANITIC DYKE
- 178-181.5 CALC SILICATE
- 181.5-188 DIOPSIDE MARBLE
- 188-200 BIOTITE HORNBLENDE QM.

091093

DDH #2 NQ 45° Dip

- 0-23 O.B.
- 23-47 MARBLE
- 47-48 CALC-SILICATE
- 48-87 INTERBANDED CALC-SILICATE, MARBLE
- 87-94 BIOTITE HORNBLENDE QM.
- 94-113 CALC-SILICATE GRANITIC DYKE CONTACT
- 113-186 BIOTITE HORNBLENDE QM.
- 186-204 CALC-SILICATE
- 204-245.5 MARBLE
- 245.5-279 SKARN MINERAL ZONE CALC-SILICATE
- 245.5-293 - CALC-SILICATE
- 293-320 BIOTITE HORNBLENDE QM.

D.D. FRANK 11/16/74

DDH #3 NQ 45° Dip

- 0-28 O.B.
- 28-44 CALC-SILICATE HORNFELS
- 44-187 META SILTSTONE
- 187-193 FELSITE DYKE
- 193-322 META SILTSTONE
- 322-328 FELSITE DYKE
- 331-511 META SILTSTONE



95-E-5

1972

DDH #4 NQ 50° Dip

- 0-28 O.B.
- 28-37 MARBLE
- 37-58 SKARN (CALC-SILICATE) MINERALIZED
- 58-60 HYBRID ZONE
- 60-69 BIOTITE HORNBLENDE QM.

DDH # 5 N4 60' Dip

- 0-20 OB
- 20-53.5 META LIMESTONE
- 53.5-90.5 META SILTSTONE (HORNFELS)
- 90.5-109 DIOPSIDE GARNET SKARN
- 109-219.5 META SILTSTONE
- 219.5-237.5 BIOTITE HORNBLENDE QM
- 237.5-302 META SILTSTONE
- 302-316.5 PORPHYRY DYKE
- 316.5-344 SILICATE HORNFELS
- 344-371 BIOTITE HORNBLENDE QM

DDH # 6 N4 24-37' BQ 37-460' 45° Dip

- 0-24 OB
- 24-124 META SILTSTONE
- 124-128 FELSITE DYKE
- 128-239 SILTSTONE
- 239-268 BIOTITE HORNBLENDE QM
- 268-285 HYBRID ZONE
- 285-295 DIOPSIDE MARBLE
- 295-320 CALC-SILICATE SKARN (MIN)
- 320-460 BIOTITE HORNBLENDE QM

DDH # 7 N4 25-41' BQ 41-455' 50° Dip

- 0-25 OB
- 25-240 BIOTITE HORNBLENDE QM
- 240-252 HYBRID ZONE
- 252-330 META SILTSTONE (HORNFELS)
- 330-402 BIOTITE HORNBLENDE QM
- 402-416 META SILTSTONE
- 416-455 BIOTITE HORNBLENDE QM

DDH # 8 N4 0-92' BQ 92-768 Dip 45°

- 0-290 CALC-SILICATE HORNFELS
- 290-398 SKARN - Calc silicate
- 398-430 CALC-SILICATE HORNFELS
- 430-450 SKARN
- 450-478 Calc silicate Hornfels
- 478-717.5 SKARN
- 717.5-768 BIOTITE HORNBLENDE QM

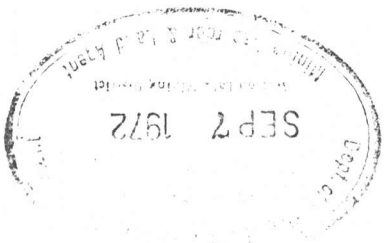


Assay Results of Chip Sampling of First Cook Pit
Scale 1" = 20' July 23, 1972
Sampled by Steve Wren, Gerry Delane

81117
18
19
20
21
22

15.0'
15.0'
15.0'
14.0'
12.0'
13.0'
11.0'

line bearing 098°



81717-23

860160

88-7A