

HUDSON BAY EXPLORATION AND DEVELOPMENT

COMPANY LIMITED

ASSESSMENT REPORT

OF

MAGNETIC SURVEY



MAC 101 - 104 CLAIMS

(YA 40717 - 720)

63°18' 130°53'

MAYO MINING DISTRICT

105 0 7

R. STROSHEIN

AUGUST 1982

091075

This report has been examined by
the Geological Exploration Unit
under Section 53 (4) Yukon Quartz
Mining Act and is allowed as
representation work to the amount
of \$ 1,200 -.

A. Watson

W Regional Manager, Exploration and
Geological Services for Commissioner
of Yukon Territory.

TABLE OF CONTENTS

	<u>PAGE NO.</u>
1. SUMMARY.....	1
2. LOCATION AND ACCESS.....	1
3. CLAIM OWNERSHIP.....	1
4. MAGNETIC SURVEY.....	1
5. CONCLUSIONS AND RECOMMENDATIONS.....	4

APPENDIX I - SUMMARY OF EXPENDITURES

APPENDIX II - QUALIFICATIONS R. STROSHEIN

LIST OF FIGURES

1. LOCATION MAP.....	2
2. CLAIM OUTLINE MAP.....	3
3. MAC CLAIMS - MAGNETOMETER SURVEY.....	Pocket

1. SUMMARY:

Five occurrences of bedded barite outcrop on the property. The barite occurs as massive grey cherty barite or interlaminated grey crystalline barite with black platy argillite. The largest occurrence has a strike length of 150 meters and thickness of at least 50 meters.

The barite bodies occur in finely laminated carbonaceous argillite which is the lower division of the Lower Earn Group.

The MAC 101-104 claims were staked in August of 1979. Subsequent exploration included prospecting, geological mapping and sampling of silt, soil and rocks in the adjacent areas. The results did not indicate the presence of associated lead-zinc mineralization.

Postulating that the barite occurrences indicated once active hydrothermal systems a limited magnetic survey was undertaken this season to locate possible "feeder" zones.

The survey results did not indicate any obvious pattern indicating an anomalous locale.

2. LOCATION AND ACCESS:

The MAC 101-104 claims are located approximately 35 kilometers west of the Macmillan Pass airstrip Figure 1.

The area is accessible by helicopter available for local charter from the Macmillan Pass airstrip.

3. CLAIM OWNERSHIP:

The MAC 101-104 claims (YA 40717 - 720) are wholly owned by Hudson Bay Exploration and Development Company Limited of 100-10 Burns Road, Whitehorse, Yukon Territory. Figure 2.

The survey was conducted by Stephen Peers who was employed by Hudson Bay Exploration.

4. 1982 MAGNETIC SURVEY:

A limited magnetic survey was instigated on the claim group in early August of 1982, Figure 3. One day was spent re-chaining and refurbishing the previously established grid and another day to carry out the measurements. The results did not indicate there was an obvious magnetic expression associated with the barite occurrences. Therefore, the survey was suspended.



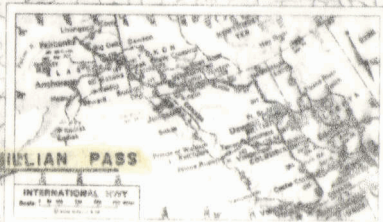
HUDSON BAY EXPLORATION & DEVELOPMENT
 COMPANY LIMITED

WHITEHORSE

OFFICE

MAC CLAIMS
 LOCATION MAP

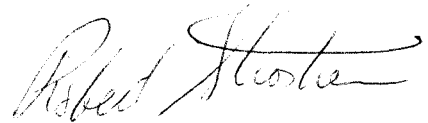
DRAWN BY: R. G.	DATE: 8/6. 1960	PLATE No. 1
FIELD WORK BY:	REVISED BY:	SCALE:



5. CONCLUSIONS AND RECOMMENDATIONS:

The results of the survey suggest there is not significant magnetic response in the vicinity of the bedded barite occurrences on the claims group. This suggests that the pyrrhotite-feeder zone type mineralization occurring at the Tom property does not occur in association with the occurrences on the claim group.

It is recommended that a gravimetric survey be conducted to test for possible massive sulphide zones which may be related to the barite deposits.

A handwritten signature in cursive script, appearing to read "Robert Strashen".

R. Strashen

APPENDIX 1

SUMMARY OF EXPENDITURES

MAGNETOMETER SURVEY

MAC 101 - 104

AUG. 5 & 8, 1982

HELICOPTER CHARGES: NORTHERN MOUNTAIN HELICOPTERS

August 5, 1.0 hours (206B) @ \$500/hr.	\$ 500.00
fuel: 1.0 hr @ 22.5 gal/hr @ 3.15\$/gal	70.87
August 8, 1.2 hours (206B) @ \$500/hr	600.00
fuel: 1.2 hr @ 22.5 gal/hr @ 3.15\$/gal	<u>85.00</u>
Total helicopter charges	\$1,255.97

SALARY AND WAGES

St. Peers: 7 days @ 15\$/day	150.00
------------------------------	--------

CAMP COSTS

2 man days @ 25\$/day	50.00
-----------------------	-------

Total Expenditures -	\$1,455.97
----------------------	------------

APPENDIX II

ROBERT W. STROSHEIN

ADDRESS 181 Alsek,
Whitehorse, Yukon Territory.
Y1A 6L8

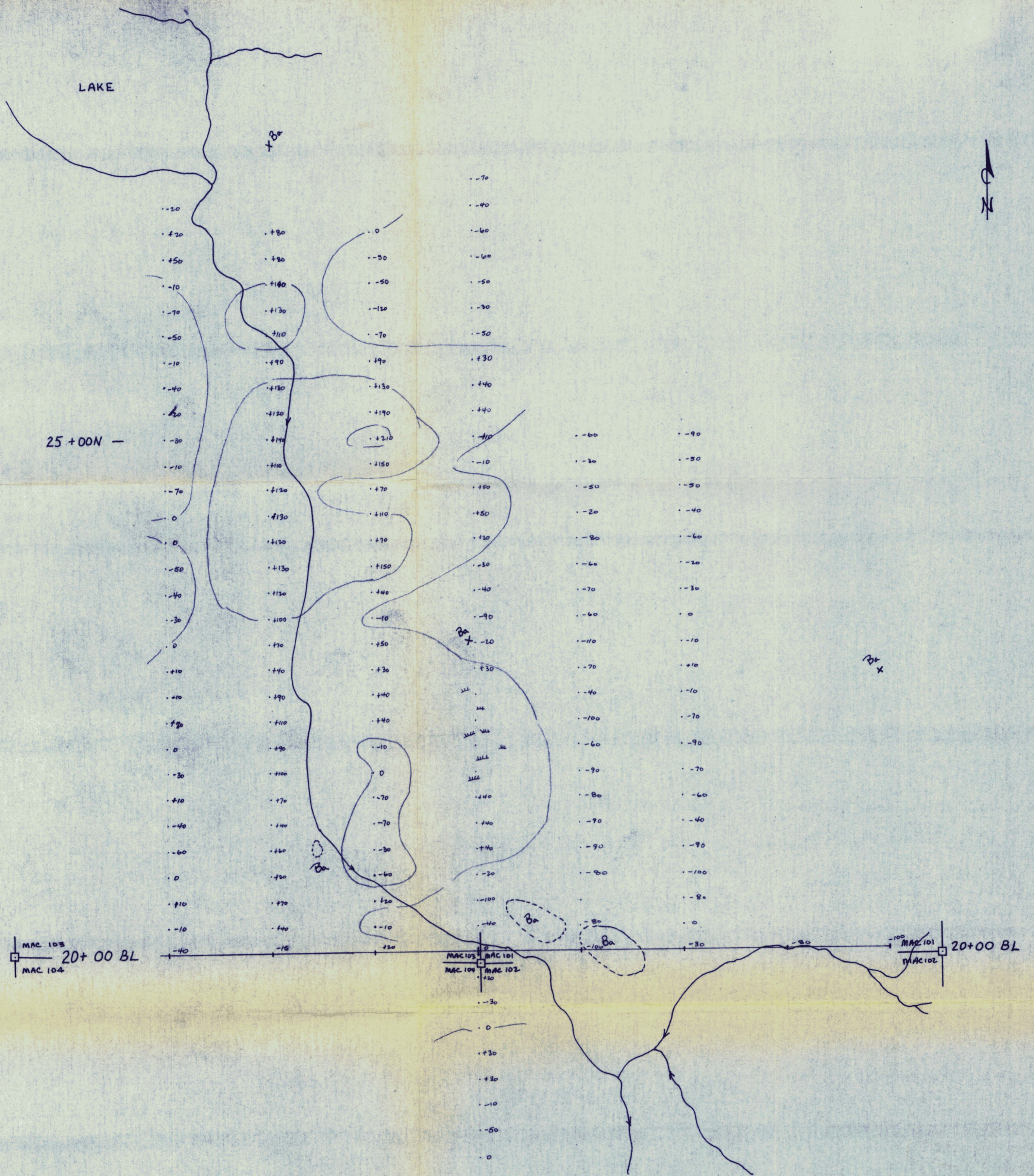
EDUCATION: B. Sc. (Geological Engineering) from
University of Saskatchewan
Graduated in 1977

EMPLOYMENT: 1973 - 1982 Hudson Bay Exploration & Development Co. Ltd.

 Flin Flon Office 1973 - 1975
 Drill Geologist - field supervisor of diamond
 drill projects Northern Manitoba and Saskatchewan.

 Whitehorse Office
 Project Geologist 1975-1980 - field supervisor of
 geological mapping, geophysical, geochemical and
 prospecting programs in the Yukon Territory.
 Included report preparation and assessment.

Senior Exploration Geologist - 1981 - planning,
 monitoring and assessing exploration projects
 conducted in the Yukon Territory.



Instrument : Scintrex MF-2
 Add background of 50,000 γ

HUDSON BAY EXPLORATION & DEVELOPMENT		
WHITEHORSE		COMPANY LIMITED
		OFFICE
MAC - GRID No. 17		091075
MAGNETIC SURVEY		
MAYO MINING DISTRICT		
DRAWN BY: RS	DATE:	PLATE No. : 3
FIELD WORK BY:	REVISED BY:	SCALE:
SR		0 25 50 75 100 meters