



COMINCO LTD.

EXPLORATION
NTS: 105 H-2

WESTERN DISTRICT
26 FEBRUARY 1980

ASSESSMENT REPORT FOR

BULLDOZER TRENCHING

ON M.T.B. MINING CLAIMS 1, 3, 4

LATITUDE: 61°08'N LATITUDE: 128°40'W



MOUNT BILLINGS AREA

WATSON LAKE MINING DIVISION

YUKON TERRITORY

WORK DONE UNDER THE

SUPERVISION OF A.B. MAWER



PERIODS OF FIELD WORK: 11-30 AUGUST 1979
18 SEPTEMBER-6 OCTOBER 1979

FEBRUARY 1980

A.B. MAWER

090934

This report has been examined by the Geological Evaluation Unit and is recommended to the Commissioner to be considered as representation work in the amount of

\$ 35,750

Ruth Debra A. Rydberg
Resident Geologist or
Resident Mining Engineer *June 4/81*

Considered as representation work under
Section 53 (4) Yukon Quartz Mining Act.

Commissioner of Yukon Territory

TABLE OF CONTENTS

LIST OF CLAIMS; AMOUNT OF CREDITS APPLIED FOR
LIST OF STAFF EMPLOYED DURING TRENCHING
STATEMENT OF EXPENITURES FOR PROPERTY (ACCOUNTING DEPARTMENT)
AFFIDAVIT
EXHIBIT "A" - STATEMENT OF EXPENDITURES FOR ASSESSMENT WORK
CREDIT PURPOSES (WESTERN DISTRICT)
STATEMENT OF QUALIFICATIONS

ATTACHMENTS

LOCATION MAP		1"=80 miles
CLAIM MAP		2"= 1 mile
PLATE II	Trenching 1979	1"=100'
PLATE III	Trench 1 Surface Plan	1"=20'
PLATE IV	Trench 2 Surface Plan	1"=20'
PLATE V	Trench 8 Floor	1"=20'
PLATE V-A	Trench 8 East Wall	1"=20'
PLATE VI	Trench 9	1"=20'

REPORTED BY: _____

A. B. Mawer

A.B. MAWER
SENIOR GEOLOGIST

APPROVED FOR
RELEASE BY: _____

G. Harden
G. HARDEN
MANAGER, EXPLORATION
WESTERN DISTRICT

COMINCO LTD.

EXPLORATION
NTS: 105/H-2

WESTERN DISTRICT
FEBRUARY 1980

LIST OF CLAIMS

M.T.B. GROUP

WATSON LAKE M.D. - YUKON

N.T.S 105/H-2

ASSESSMENT REPORT FOR BULLDOZER TRENCHING ON MTB 1, 3, 4

<u>CLAIMS</u>	<u>RECORD NOS.</u>	<u>DATE LOCATED</u>	<u>DATE RECORDED</u>	<u>YEARS OF ASSESSMENT WORK APPLIED FOR</u>	<u>REMARKS</u>
MTB 1	949	Aug.19/76	Sept.7/76	3¼	Common Due Date 7 December
MTB 2	950	Aug.19/76	Sept.7/76	3¼	" "
MTB 3	951	Aug.19/76	Sept.7/76	3¼	" "
MTB 4	952	"	"	3¼	" "
MTB 5	953	"	"	3¼	" "
MTB 6	954	"	"	3¼	" "
MTB 7	955	"	"	3¼	" "
MTB 8	956	"	"	3¼	" "
MTB 9	957	"	"	3¼	" "
MTB 10	958	"	"	3¼	" "
MTB 11	959	"	"	3¼	" "
MTB 12	960	"	"	3¼	" "
MTB 13	961	"	"	3¼	" "
MTB 14	962	"	"	3¼	" "
MTB 15	963	"	"	3¼	" "
MTB 16	964	"	"	3¼	" "
MTB 17	965	"	"	3¼	" "
MTB 18	966	"	"	3¼	" "
MTB 19	967	Aug.30/79	Sept.18/79	3¼	" "
MTB 20	968	"	"	3¼	" "
MTB 21	969	"	"	3¼	" "
MTB 22	970	"	"	3¼	" "
MTB 23	971	"	"	3¼	" "
MTB 24	972	"	"	3¼	" "
MTB 25	973	"	"	3¼	" "
MTB 26	974	"	"	3¼	" "
MTB 27	975	"	"	3¼	" "
MTB 28	976	"	"	3¼	" "
MTB 29	977	"	"	3¼	" "
MTB 30	978	"	"	3¼	" "

CLAIMS	RECORD NOS.	DATE LOCATED	DATE RECORDED	YEARS OF ASSESSMENT	REMARKS
				WORK APPLIED FOR	Common Due Date
MTB 31	YA 45981	Sept. 19/79	Sept. 20/79	3½	7 December
32	YA 45982	Sept. 19/79	Sept. 20/79	3¼	" "
33	YA 45983	Sept. 19/79	Sept. 20/79	3¼	" "
34	YA 45984	Sept. 19/79	Sept. 20/79	3¼	" "
35	YA 45985	Sept. 19/79	Sept. 20/79	3¼	" "
36	YA 45986	Sept. 19/79	Sept. 20/79	3¼	" "
37	YA 45987	Sept. 19/79	Sept. 20/79	3¼	" "
38	YA 45988	Sept. 19/79	Sept. 20/79	3¼	" "
39	YA 45989	Sept. 19/79	Sept. 20/79	3¼	" "
40	YA 45990	Sept. 19/79	Sept. 20/79	3¼	" "
41	YA 45991	Sept. 19/79	Sept. 20/79	3¼	" "
42	YA 45992	Sept. 19/79	Sept. 20/79	3¼	" "
43	YA 45993	Sept. 19/79	Sept. 20/79	3¼	" "
44	YA 45994	Sept. 19/79	Sept. 20/79	3¼	" "
45	YA 45995	Sept. 19/79	Sept. 20/79	3¼	" "
46	YA 45996	Sept. 19/79	Sept. 20/79	3¼	" "
47	YA 45997	Sept. 19/79	Sept. 20/79	3¼	" "
48	YA 45998	Sept. 19/79	Sept. 20/79	3¼	" "
49	YA 45999	Sept. 19/79	Sept. 20/79	3¼	" "
50	YA 46000	Sept. 19/79	Sept. 20/79	3¼	" "
51	YA 46001	Sept. 19/79	Sept. 20/79	3¼	" "
52	YA 46002	Sept. 19/79	Sept. 20/79	3¼	" "
53	YA 46003	Sept. 19/79	Sept. 20/79	3¼	" "
54	YA 46004	Sept. 19/79	Sept. 20/79	3¼	" "
55	YA 46005	Sept. 19/79	Sept. 20/79	3¼	" "
56	YA 46006	Sept. 19/79	Sept. 20/79	3¼	" "
57	YA 46007	Sept. 19/79	Sept. 20/79	3¼	" "
58	YA 46008	Sept. 19/79	Sept. 20/79	3¼	" "
59	YA 46009	Sept. 19/79	Sept. 20/79	3¼	" "
60	YA 46010	Sept. 19/79	Sept. 20/79	3¼	" "
61	YA 46011	Sept. 19/79	Sept. 20/79	3¼	" "
62	YA 46012	Sept. 19/79	Sept. 20/79	3¼	" "
63	YA 46013	Sept. 19/79	Sept. 20/79	3¼	" "
64	YA 46014	Sept. 19/79	Sept. 20/79	3¼	" "
65	YA 46015	Sept. 19/79	Sept. 20/79	3¼	" "
66	YA 46016	Sept. 19/79	Sept. 20/79	3¼	" "
67	YA 46017	Sept. 19/79	Sept. 20/79	3¼	" "
68	YA 46018	Sept. 19/79	Sept. 20/79	3¼	" "
69	YA 46019	Sept. 19/79	Sept. 20/79	3¼	" "

<u>CLAIMS</u>	<u>RECORD NOS.</u>	<u>DATE LOCATED</u>	<u>DATE RECORDED</u>	<u>YEARS OF ASSESSMENT WORK APPLIED FOR</u>	<u>REMARKS</u>
MTB 70	YA 46020	Sept. 19/79	Sept. 20/79	3½	Common Due Date
71	YA 46021	Sept. 19/79	Sept. 20/79	3½	7 December
72	YA 46022	Sept. 19/79	Sept. 20/79	3½	" "
73	YA 46023	Sept. 19/79	Sept. 20/79	3½	" "
74	YA 46024	Sept. 19/79	Sept. 20/79	3½	" "
75	YA 46025	Sept. 19/79	Sept. 20/79	3½	" "
76	YA 46026	Sept. 19/79	Sept. 20/79	3½	" "
77	YA 46027	Sept. 19/79	Sept. 20/79	3½	" "
78	YA 46028	Sept. 19/79	Sept. 20/79	3½	" "
79	YA 46029	Sept. 19/79	Sept. 20/79	3½	" "
80	YA 46030	Sept. 19/79	Sept. 20/79	3½	" "
81	YA 46031	Sept. 19/79	Sept. 20/79	3½	" "
82	YA 46032	Sept. 19/79	Sept. 20/79	3½	" "
83	YA 46033	Sept. 19/79	Sept. 20/79	3½	" "
84	YA 46034	Sept. 19/79	Sept. 20/79	3½	" "
85	YA 46035	Sept. 19/79	Sept. 20/79	3½	" "
86	YA 46036	Sept. 19/79	Sept. 20/79	3½	" "
87	YA 46037	Sept. 19/79	Sept. 20/79	3½	" "
88	YA 46038	Sept. 19/79	Sept. 20/79	3½	" "
89	YA 46039	Sept. 19/79	Sept. 20/79	3½	" "
90	YA 46040	Sept. 19/79	Sept. 20/79	3½	" "
91	YA 46041	Sept. 19/79	Sept. 20/79	3½	" "
92	YA 46042	Sept. 19/79	Sept. 20/79	3½	" "
93	YA 46043	Sept. 19/79	Sept. 20/79	3½	" "
94	YA 46044	Sept. 19/79	Sept. 20/79	3½	" "
95	YA 46045	Sept. 19/79	Sept. 20/79	3½	" "
96	YA 46046	Sept. 19/79	Sept. 20/79	3½	" "
97	YA 46047	Sept. 19/79	Sept. 20/79	3½	" "
98	YA 46048	Sept. 19/79	Sept. 20/79	3½	" "
99	YA 46049	Sept. 19/79	Sept. 20/79	3½	" "
100	YA 46050	Sept. 19/79	Sept. 20/79	3½	" "
101	YA 46051	Sept. 19/79	Sept. 20/79	3½	" "
102	YA 46052	Sept. 19/79	Sept. 20/79	3½	" "
103	YA 46053	Sept. 19/79	Sept. 20/79	3½	" "
104	YA 46054	Sept. 19/79	Sept. 20/79	3½	" "
105	YA 46055	Sept. 19/79	Sept. 20/79	3½	" "
106	YA 46056	Sept. 19/79	Sept. 20/79	3½	" "
107	YA 46057	Sept. 19/79	Sept. 20/79	3½	" "
108	YA 46058	Sept. 19/79	Sept. 20/79	3½	" "
109	YA 46059	Sept. 19/79	Sept. 20/79	3½	" "
110	YA 46060	Sept. 19/79	Sept. 20/79	3½	" "

COMINCO LTD.

EXPLORATION
NTS: 105 H-2

WESTERN DISTRICT
FEBRUARY 1980

M.T.B. GROUP

WATSON LAKE MINING DIVISION, YUKON

LIST SHOWING ALL PERSONS EMPLOYED

DURING BULLDOZER TRENCHING

11 AUGUST - 30 AUGUST & 18 SEPTEMBER - 6 OCTOBER 1979

STAFF TIME & EXPENSES

BULLDOZER WORK BY GRANT STEWARD CONSTRUCTION,

WATSON LAKE, YUKON TERRITORY

COMINCO STAFF

A.B. MAWER, SENIOR GEOLOGIST	14 days	\$3,617.
A.C. FREEZE, GEOLOGIST	20 days	\$4,926.
D. KURAN, GEOLOGIST	19 days	\$3,973.
A.L. MACGREGOR, TECHNICIAN	39 days	<u>\$7,412.</u>
	TOTAL	<u>\$19,928.</u>

COMINCO LTD.

STATEMENT OF EXPENDITURES


MTB GROUP

WATSON LAKE M.D., YUKON

JANUARY 1 TO DECEMBER 31, 1979

Geology	\$ 19,928
Chemical analyses	2,807
Trenching	25,758
Transportation	19,140
Camp costs	2,879
Tenure	6,946
Administrative services	7,746
	<hr/>
	\$ 85,204
	<hr/> <hr/>

R. Craig
Vancouver Office
February 19, 1980



Supervisor, Exploration
& Foreign Accounting

IN THE MATTER OF THE YUKON QUARTZ MINING ACT AND
IN THE MATTER OF BULLDOZER TRENCHING CARRIED OUT ON
MINERAL CLAIMS M.T.B. 1,3,4
LOCATED IN THE WATSON LAKE MINING DISTRICT OF THE YUKON TERRITORY
MORE PARTICULARLY, NTS: 105 H-2

A F F I D A V I T

I, A.B. MAWER, of the City of North Vancouver, in the Province of British Columbia, Senior Geologist, make oath and say:-

1. THAT I am employed as a Senior Geologist by Cominco Ltd., and as such, have a personal knowledge of the facts to which I hereinafter depose;
2. THAT annexed hereto and marked as "Exhibit A" to this my affidavit is is a true copy of expenditures on Bulldozer Trenching carried out on mineral claims M.T.B. 1,3,4;
3. THAT the said expenditures were incurred between the 11th day of August 1979 and the 30th day of August 1979 and the 18th day of September to the 6th day of October 1979 for the purpose of mineral exploration on the above noted claim group.

Sworn Before Me at the City of)
Vancouver in the Province of)
British Columbia this 4th day)
of March, 1980.)

Catherine A. Hoce
A Notary Public In and For the)
Province of British Columbia.)

A. B. Mawer
A.B. Mawer
Senior Geologist

COMINCO LTD.

EXPLORATION
NTS: 105 H-2

WESTERN DISTRICT
1 FEBRUARY 1980

M.T.B. GROUP

WATSON LAKE MINING DIVISION, YUKON

STATEMENT OF EXPENDITURES FOR ASSESSMENT WORK

CREDIT PURPOSES - WESTERN DISTRICT

<u>CHARGES</u>	<u>PERIODS OF FIELD WORK</u>	
	<u>11-30 August 1979</u>	<u>18 Sept-6 Oct. 1979</u>
Geology; Staff time & Expenses	\$ 9,964.00	\$ 9,964.00
Geochemical Analyses	1,403.50	1,403.50
Trenching	12,879.00	12,879.00
Transportation	7,969.61	7,969.60
Camp Cost	1,439.50	1,439.50
Administrative Services	2,272.60	2,272.61
	<u>535,928.21</u>	<u>535,928.21</u>
		\$71,856.42

Signed: A. B. Mawer
A.B. Mawer
Senior Geologist

THIS IS EXHIBIT "A" TO THE AFFIDAVIT OF EXPENDITURES RELATING TO BULLDOZER TRENCHING DECLARED BEFORE ME THIS 4th DAY OF March, 1980, A.D.

Christine A. Hise

**A Notary Public in and for
the Province of British Columbia**

COMINCO LTD.

EXPLORATION

WESTERN DISTRICT
28 FEBRUARY 1980

STATEMENT OF QUALIFICATIONS

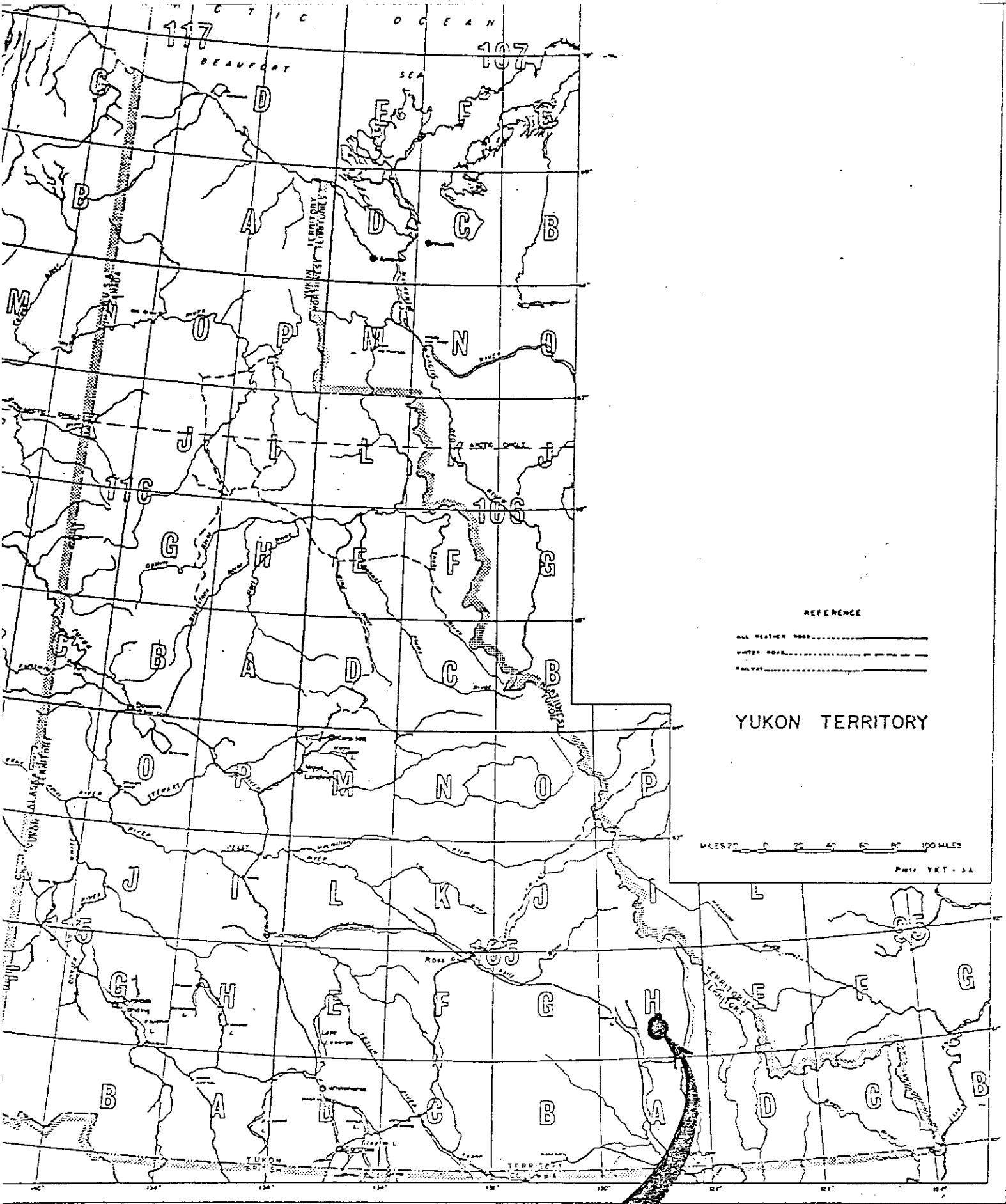
I, D.W. Heddle, Assistant Manager for Cominco Ltd., Exploration, Western District, of 409 Granville Street, Vancouver, British Columbia, hereby declare that Mr. A.B. Mawer has supervised the field work and written the assessment work report for the nine trenches of the M.T.B. property, Watson Lake Mining Division, Yukon Territory.

Mr. Mawer, Senior Geologist, has been working for Cominco Ltd. in mineral exploration for the past 25 years.

I consider him to be a competent geologist who is well qualified to perform work described in this assessment work report.



D.W. Heddle, P. Eng.
Assistant Manager, Exploration
Western District

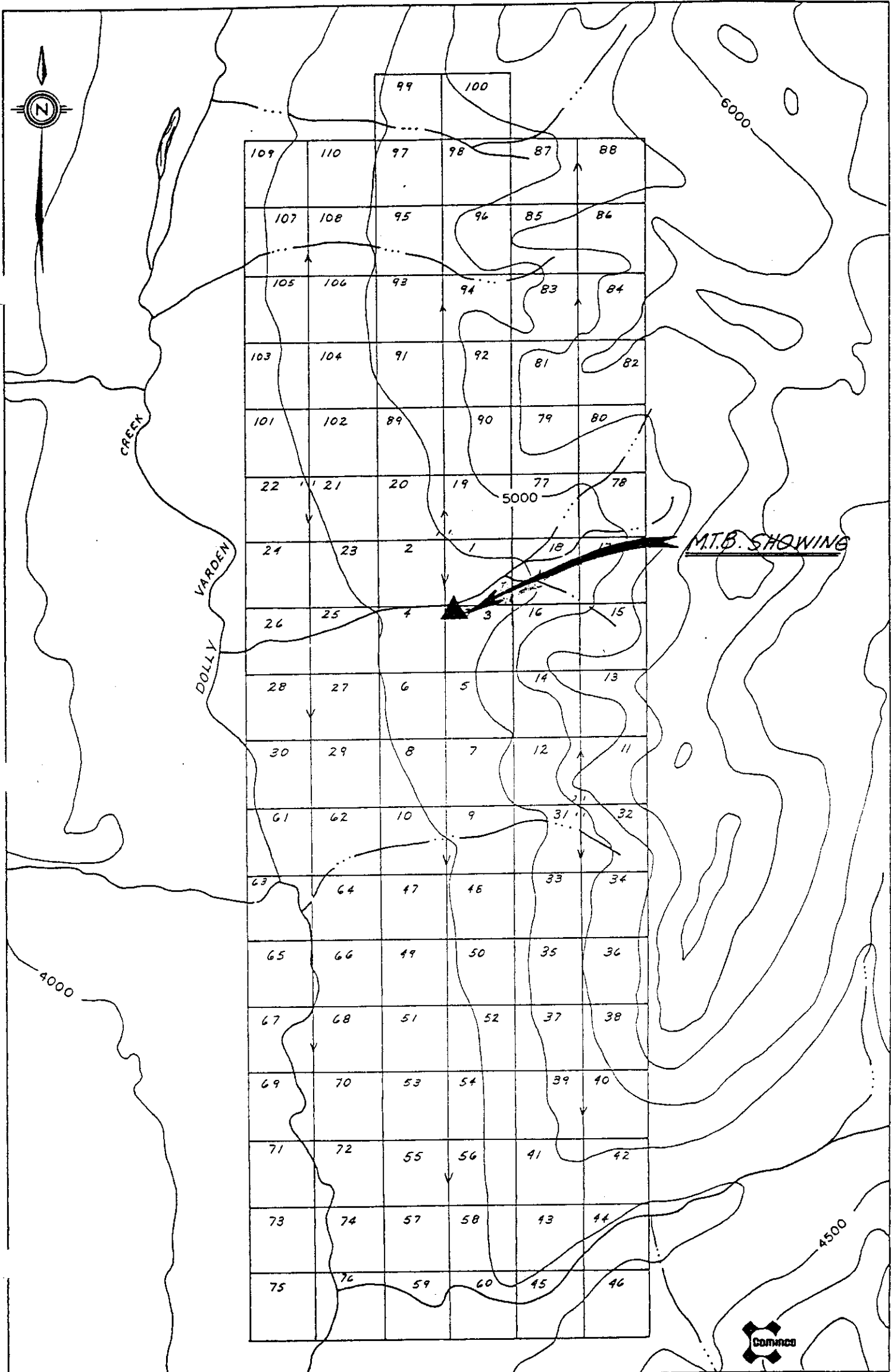


M.T.B.

by:	Traced by:	
by Date	Revised by	Date
in Feb/80		

Location Map

Scale: 1 in : 20 miles Date: Feb/80 Plate: Fig- 1



Drawn by:		Traced by: ALM	
Revised by	Date	Revised by	Date

MTB CLAIM MAP
N.T.S. 105 H-2

Scale: 2" = 1 mile Date: Nov. 1979 Plate:



- LEGEND**
- 0524 Soil sample number
 - 32,14,83,4 ppm Cu, Pb, Zn, Ag
 - Geophysics IP Anomaly
 - 3 Hornfels, argillite, minor siltite and quartzite local calcareous layers
 - 2 Skarn, diopside, epidote, garnet with disseminated and lenses of massive sphalerite, galena, chalcopyrite
 - 1 Limestone, chert layers

TRENCHING

Approximately 18,000 cubic yards (13,700 cubic metres) were excavated in nine trenches by a D-8 cat owned by Stewart Construction of Watson Lake, Y.T. The ground moved was all glacial till with varying amounts of large boulders, in several places the ground had frozen layers up to 2 metres in thickness. The trenches and dimensions are listed below. The program was done in two stages from August 11 to August 30 and September 18 to October 6.

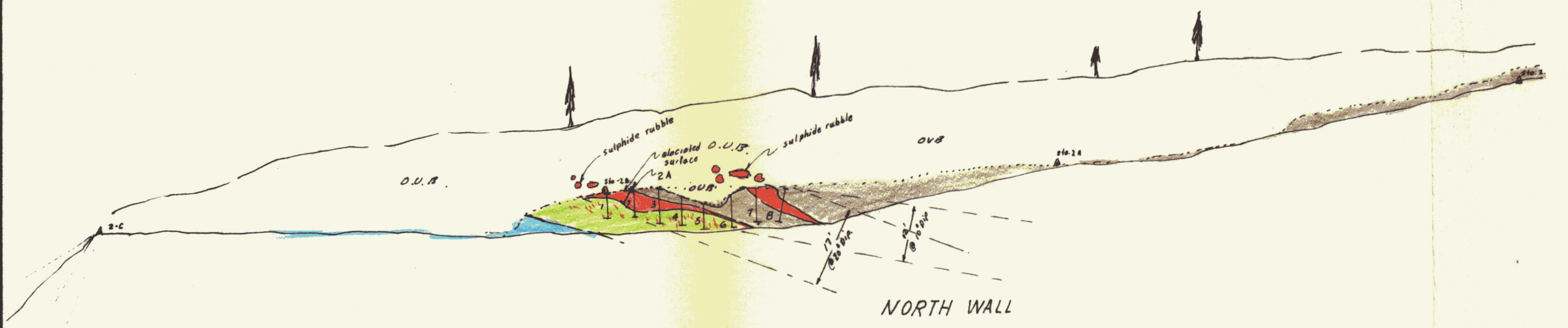
Trench	Length	Average Width	Average Height	Cubic Yards	Cubic Metres
1	310'	20'	20'	4487	3509
2	450'	15'	15'	3750	2865
2A	120'	20'	12'	1065	815
3	170'	20'	20'	2511	1926
4	130'	16'	8'	614	471
5	130'	16'	8'	614	471
6	170'	16'	6'	603	462
7	200'	16'	7'	827	634
8	180'	15'	18'	1800	1375
9	200'	17'	12'	1509	1155
Total: 9				17780	13683

3-3 2060
198

MTB 105 H/2

TRENCHING 1979

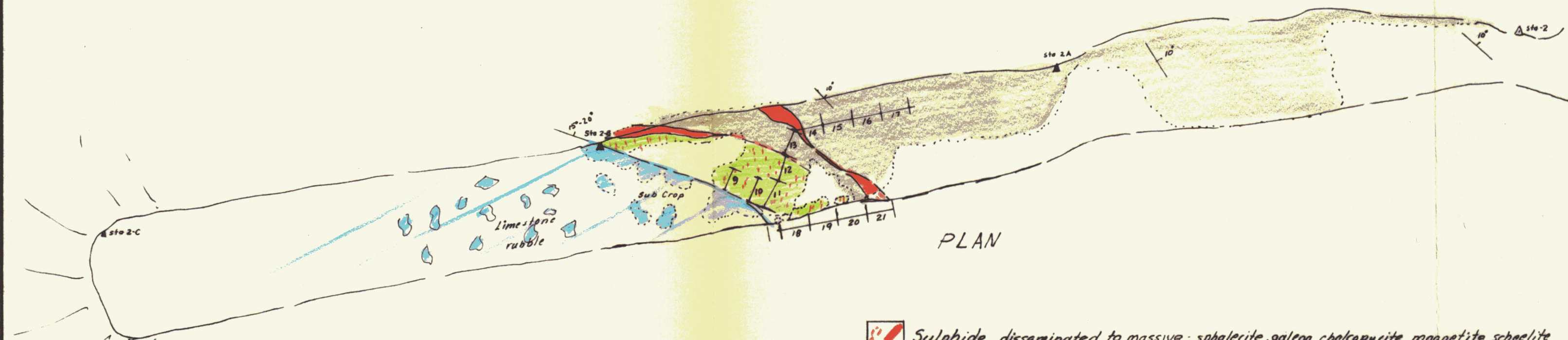
Scale: 1" = 100 Feet Date: DECEMBER 1979 Plate: II



Sample No	Assay No	Width (ft)	% Ag	% Cu	% Pb	% Zn	% Mo
S-1	9919	0.9	1.23	0.52	5.20	4.30	0.11
S-2	9920	1.7	0.19	0.11	2.15	2.03	0.06
S-3	9921	1.4	2.25	2.73	10.40	8.10	0.20
S-4	9922	0.6	2.42	1.63	6.45	5.73	0.15
S-5	9923	0.6	0.61	0.07	1.56	1.20	0.06
S-6	9924	0.9	2.96	0.01	1.95	1.80	0.10
S-7	9925	0.4	3.35	0.14	2.25	3.05	0.14
S-8	9926	1.3	13.90	3.04	7.90	18.10	0.73
S-9	9927	0.7	1.16	0.18	2.70	2.75	0.09
S-10	9928	0.9	0.71	0.13	5.75	4.80	0.06
S-11	9929	1.45	0.61	0.01	3.40	2.35	0.09
S-12	9930	1.8	0.28	0.03	1.69	1.54	0.05
S-13	9931	1.4	0.57	0.07	0.82	2.40	0.03
S-14	9932	1.7	5.66	0.35	2.65	5.71	0.04
S-15	9933	1.4	0.66	<0.01	0.15	0.28	<0.01
S-16	9934	1.6	0.06	<0.01	0.05	0.08	<0.01
S-17	9935	1.6	0.04	<0.01	0.01	0.36	<0.01
S-18	9936	1.2	0.02	<0.01	2.22	1.26	0.11
S-19	9937	1.4	0.27	0.02	2.85	1.70	0.12
S-20	9938	1.4	0.35	0.01	0.17	0.48	0.01
S-21	9939	1.7	2.53	0.32	3.35	4.80	0.03
S 2A	9940	0.40	3.75	3.58	20.50	19.60	0.28

weighted Avg. of wall and floor 3m. @ 2.5% Ag, 0.72% Cu, 4.20% Pb, 4.88% Zn, 0.14% Mo

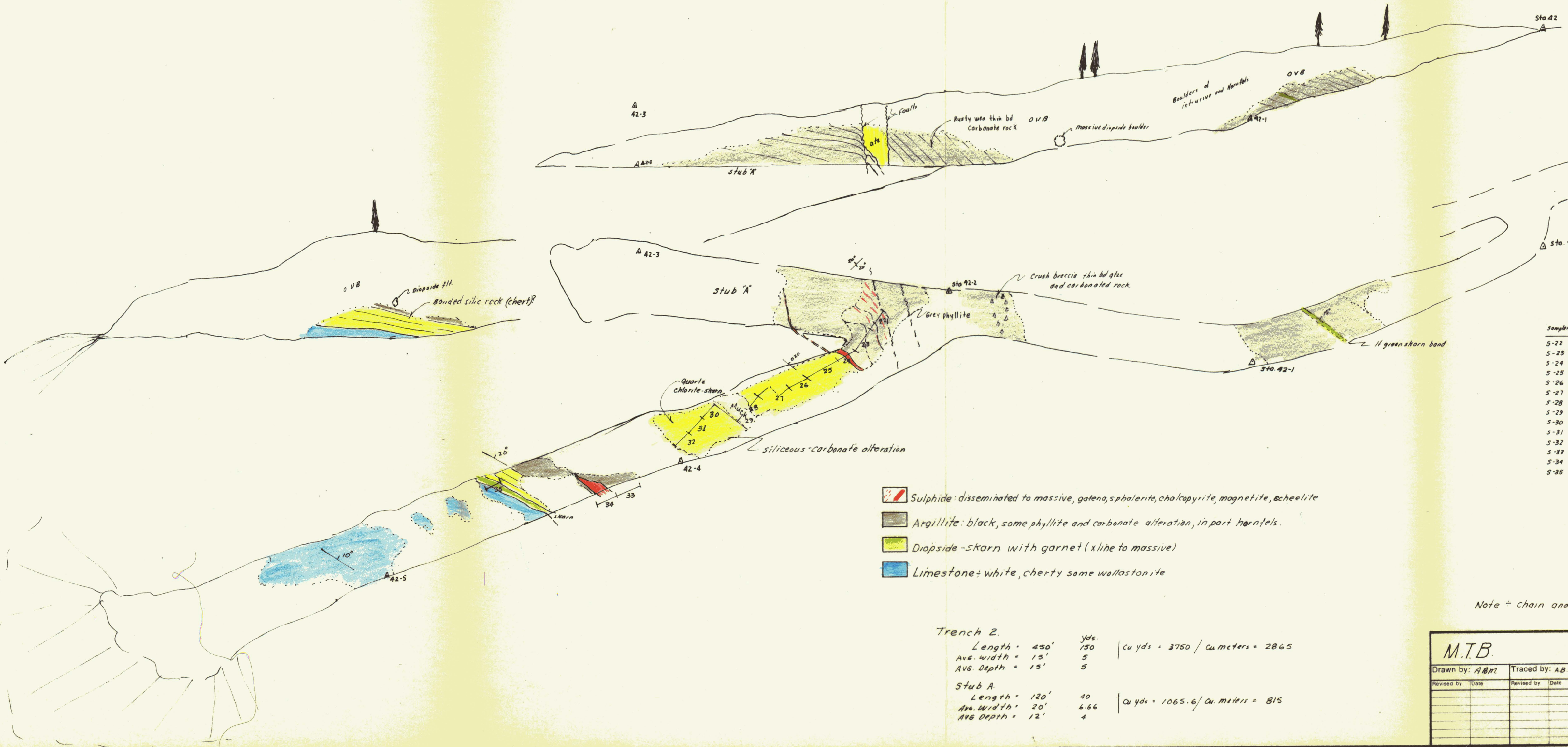
Trench 1 Length = 310' test yds 103.3
 Avg Width = 20' 6.6 Cu yds = 4486.68
 Avg Height = 20' 6.6 Cu Meters = 3509.2



- Sulphide, disseminated to massive - sphalerite, galena, chalcopyrite, magnetite, scheelite
- Argillite - black - some phyllite and carbonate alt., in part hornfels
- Diopside - skarn with garnet (xline to massive)
- Limestone, white-cherty, some wollastonite

Note: Chain & Compass survey sept. 1979 (ABM)

M.T.B.		ABM Domino
Drawn by: ABM	Traced by: ABM	<div style="font-size: 1.5em; font-weight: bold; margin-bottom: 10px;">TRENCH - 1</div> <div style="font-size: 1.2em; font-weight: bold; margin-bottom: 10px;">Surface Plan</div> <div style="font-size: 1.2em; font-weight: bold; float: right;">090933</div>
Revised by	Date	
Revised by	Date	
Revised by	Date	
Scale: 1 in = 20 ft 1: 250 Approx.	Date: Nov 1979	Plate: TIL



Sample No	Assay No	Width - feet	Oz Ag	% Cu	% Pb	% Zn	% Mo
S-22	9941	2.0	1.98	0.74	0.56	4.75	0.05
S-23	9942	2.0	0.74	0.03	0.55	0.56	0.02
S-24	9943	2.0	0.27	<0.01	0.24	0.21	<0.01
S-25	9944	2.0	0.22	<0.01	0.12	0.12	<0.01
S-26	9945	2.0	0.04	<0.01	0.01	0.06	<0.01
S-27	9946	2.0	0.04	<0.01	0.01	0.03	0.01
S-28	9947	2.0	0.04	<0.01	<0.01	0.36	0.02
S-29	9948	1.3	0.02	0.02	<0.01	0.01	0.01
S-30	9949	2.0	0.24	0.01	0.07	0.28	<0.01
S-31	9950	2.0	0.07	0.01	<0.01	0.01	0.01
S-32	60452	2.0	0.07	0.01	<0.01	0.01	0.01
S-33	60453	1.3	0.04	0.01	<0.01	0.01	0.01
S-34	60454	2.0	11.60	0.80	3.10	5.40	0.28
S-35	60455	2.0	0.41	0.01	0.05	0.12	0.01

- Sulphide: disseminated to massive, galena, sphalerite, chalcopyrite, magnetite, scheelite
- Argillite: black, some phyllite and carbonate alteration, in part hornfels.
- Diopside-skarn with garnet (xline to massive)
- Limestone: white, cherty some wallastonite

Trench 2.
 Length = 450' yds. 150
 Ave. width = 15' 5
 Ave. Depth = 15' 5
 Cu yds = 3750 / Cu meters = 2865

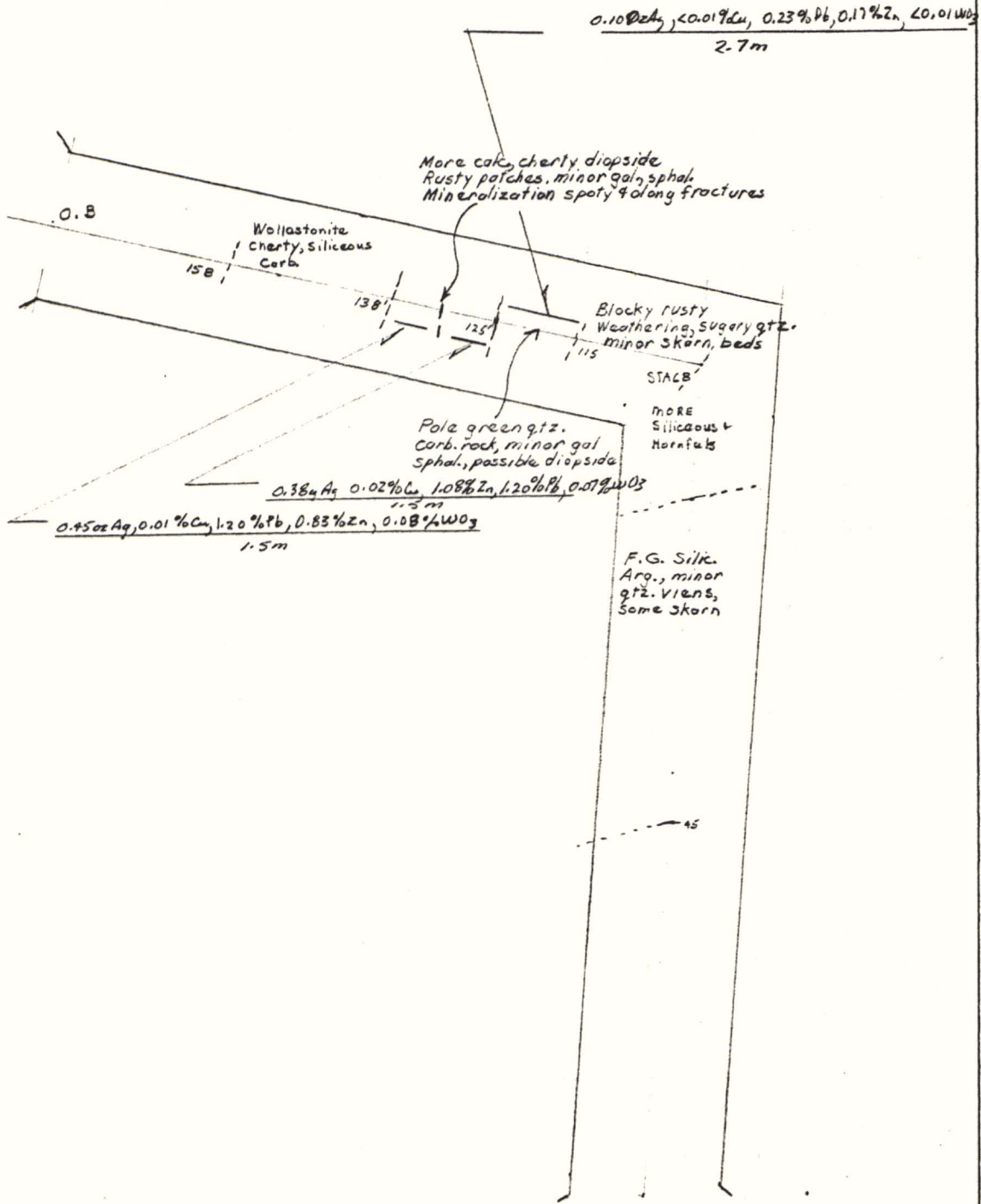
Stub A.
 Length = 120' 40
 Ave. width = 20' 6.66
 Ave. Depth = 12' 4
 Cu yds = 1065.6 / Cu meters = 815

Note - Chain and compass survey Sept. 1979

M.T.B. Drawn by: <i>A.B.M.</i> Traced by: <i>A.B.M.</i>		<h2 style="margin: 0;">TRENCH-2</h2> <h3 style="margin: 0;">Surface Plan</h3>	090934
Revised by Date	Revised by Date		
Scale: 1:20ft. = 1:250 Date: Nov. 1979		Plate: <i>IV</i>	

180' x 15 x 18 -

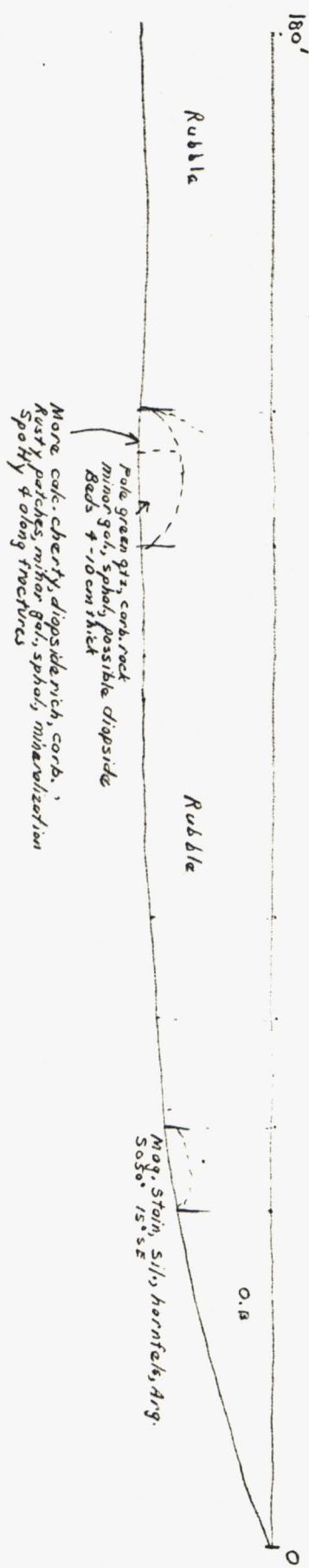
60 x 5 x 6 = 1800 cu. yds. / 1375.4 cu m.



Drawn by: ALM		Traced by: ALM.	
Revised by	Date	Revised by	Date

TRENCH 8 FLOOR

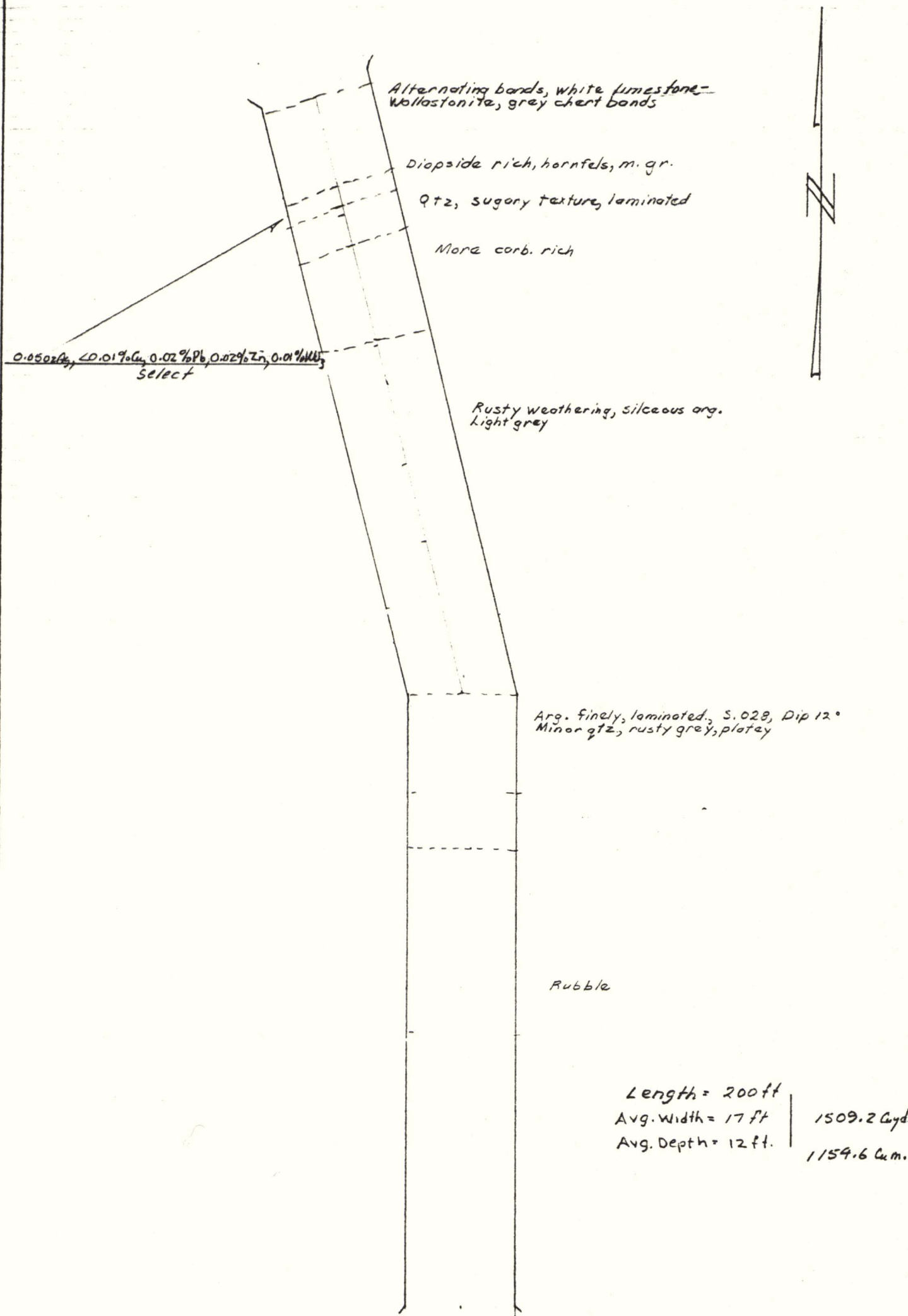
Scale: 1" = 20" Date: Oct/79 Plate: V



Drawn by: A.L.M.		Traced by: ALM.	
Revised by	Date	Revised by	Date

EAST WALL TRENCH B

Scale: 1 in = 20 ft. (1:250) Date: Oct/79 Plate: V-A



Alternating bands, white limestone -
Wollastonite, grey chert bands

Diopside rich, hornfels, m. gr.

Qtz, sugary texture, laminated

More corb. rich

0.050% Ag, 0.01% Cu, 0.02% Pb, 0.02% Zn, 0.01% Ni,
select

Rusty weathering, siliceous arg.
light grey

Arg. finely, laminated, S. 028, Dip 12°
Minor qtz, rusty grey, platy

Rubble

Length = 200 ft
Avg. Width = 17 ft
Avg. Depth = 12 ft.

1509.2 Cu yds.
1154.6 Cu m.



ALM

Drawn by: ALM.		Traced by: ALM	
Revised by	Date	Revised by	Date
ALM.	Nov/79		

TRENCH 9

Scale: 1 in: 20 ft. (1:250) Date: Oct/79 Plate: VI