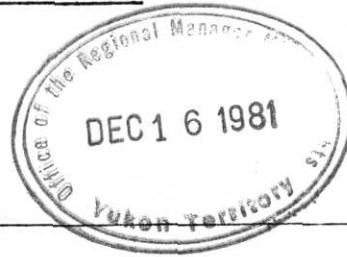


From: Mining Recorder at Whitehorse File No. _____

To: Supervising Mining Recorder - Whitehorse, Y.T.



FOR ACTION:

_____ New Application for Lease to Prospect: Name _____

_____ Renewal Appl'n Lease to Prospect: Name _____ No. _____

_____ Affidavit of Expenditure on Placer Lease: Name _____ No. _____

_____ Assignment of Prospecting Lease No. _____

From _____ To _____

_____ Grouping Appl'n under Sec. 52(2) Yukon Placer Mining Act: Owner _____

✓ _____ Diamond Drill Logs: _____

Owner: Detty Canadian Metals, Limited Claim Sheet No. 105-L-14

_____ Quartz Assessment Report _____

Claims: _____ Claim Sheet No. _____

Type of Report: _____

Submitted By: _____

Claims work performed on: _____

\$ Req. for renewal application: \$79,000-00

Signature M. Martin

Date 16 Dec - 1981

Please have map copied + return to us as only one was submitted

TAKS

Reply action

Date Ref

Signature _____

Date _____

090932



November 30, 1981.

Mr. D.F. Jennings
Mining Recorder
Room 220
Federal Building
Whitehorse, Y.T.
Y1A 2B5



Dear Mr. Jennings:

Getty Canadian Metals, Limited would like to file assessment credits totalling 791 3/4 claim years on 327 Sue and Get mineral claims. A cheque for \$4,168.75 is enclosed to cover the recording and grouping fees.

The following map and statements are submitted to fulfill the requirements necessary to apply diamond drilling costs as assessment credits to maintain in good standing 327 Sue and Get A.D. claims.

According to the conditions governing acceptance the following is submitted:

- i) 2 copies each of Certificate of Work (42)
2 copies each of Grouping Certificate (42)
1 copy each of claim map for each group (42)
- ii) an accurate map (Figure 1) showing the locations, bearing and dip of drill holes 81-28, 81-29 and 81-30 relative to the local topography and claim boundaries (including the distance and direction from a legal claim post).
- iii) details of the location of core storage (located just west of the camp, see Figure 1).
- iv) complete drill logs and assays of core (Appendix I)

. . . . /2

090932

Mr. D.F. Jennings
November 30/81.

Page 2



- v) statement of expenditures including diamond drilling and support costs, broken down according to drill hole, also invoices supporting the expenditures (Appendix II).

Yours sincerely,

A handwritten signature in cursive script that reads "Craig W. Payne".

Craig W. Payne
Geologist
Getty Canadian Metals, Limited

CWP/kh
encl.

BREAKDOWN OF DRILLING EXPENDITURES

DDH 81-28 (SUE 635) Sue Groups SG 81-37 to 44 inclusive:

Drill Costs	\$ 20,931.27
Mud	3,547.47
Cook	1,500.00
Equipment Rental:	
Sperry-Sun	506.03
Truck	982.80
Drill Mobilization (Fixed Wing Costs)	3,026.48
	<u>3,393.60</u>
Total:	\$ 33,887.65



DDH 81-29 (SUE 2010) Sue Groups SG 81-45 to 62 inclusive:

Drill Costs	\$ 24,326.25
Mud	3,000.67
Cook	1,000.00
Equipment Rental:	
Sperry-Sun	506.03
Truck	982.80
Support Flights	633.18
Support Flights	285.57
Total:	\$ 30,734.50

DDH 81-30 (SUE 2018) Sue Groups SG 81-21 to 36 inclusive:

Drill Costs	\$ 20,180.50
Mud	3,579.53
Cook	1,000.00
Equipment Rental:	
Sperry-Sun	506.03
Truck	982.80
Support Flights	653.71
Total:	\$ 26,902.57

MACMILLAN JOINT VENTURE - DIAMOND DRILL RECORD

HOLE No. 81-28

CLAIM:

PROPERTY: CLEAR LAKE

PAGE No. 9 of 14

SECTION	COLOUR	BEDDING	FRACTURES	TUNNEL	GEOLOGY	COMMENTS:	% CORE RECOVERED	SAMPLE INTERVAL B NUMBER	ASSAYS					
									DESCRIPTIVE GEOLOGY					
470		50	/			DITTO SHEARED A-2/A-3 TYPE.	117							
480			/				113							
490		50	/			492' to 496' SHEARED ACS WITH SHEARED CONTORTED STRAINERS.	107							
500			/			501' to 511' BADLY SHEARED/FAULTED BRECCIATED SECT. WITH QZ-SID STRAINERS	114							
510			/				112							
520			/				116							

MACMILLAN JOINT VENTURE - DIAMOND DRILL RECORD

HOLE No. 81-29

CLAIM:

PROPERTY: CLEAR LAKE

PAGE No. 2 of 13

SECTION	COLOUR	BEDDING	FRACTURES	MINERAL	GEOLOGY	COMMENTS:	% CORE RECOVERED	SAMPLE INTERVAL B NUMBER	ASSAYS									
50						DESCRIPTIVE GEOLOGY ~ OVERBURDEN 52												
						TILTED TO FIRM ROCK AT 82'												
						CORE BROKEN TO 96'												
						LAMINATED ARG. WITH SAND BANDS (PARALLEL & RIPPLE LAMINATED): A-2/A-3 TYPE.		80										
						TWO EXOTIC FRAGMENTS?: QZ MONZONITE & LST.		65										
						CLEARSE PARALLEL BEDDING.		63										
								90										
								100										
						104' CONTORTED B.G. QZ-SIO. STAINER Py & Sph? <1%		100										
						104' to 106' LAMINATED SILTST. TO U. FINE SANDST. E SYNCLIN ON B.G./CLEARSE SURFACES, GRADES INTO SILTST. WITH U. FINE SAND LENSES WHICH CONTINUE TO 119'		97										



MACMILLAN JOINT VENTURE - DIAMOND DRILL RECORD

HOLE No. 81-29

CLAIM:

PROPERTY: CLEAR LAKE

PAGE No. 6 of 13

SECTION	COLOUR	BEDDING	FRACTURES	MINERAL	GEOLOGY	COMMENTS:	% CORE RECOVERED	SAMPLE INTERVAL	NUMBER	ASSAYS				
										DESCRIPTIVE GEOLOGY				
290						DITTO A-2-C/A-3	100							
						286', 291', 297' BOUMA BCE SERIES INDICATE YOUNGING UP HOLE.	100							
						294.5' RUMPLED BEDS TECTONIC? OR SOFT SED.?	93							
300							75							
							105							
						315' FINELY LAMINATED SILT TO U. FINE SAND SAND ~ 6" THICK NOTABLE FOR GYPSUM ON BEDDING PLANE FRACTURES. SLIGHT DARK GREENISH TINT.	80							
						~320' FAULTS: GRAPHITIC SMEARS WITH QTZ-SID STRINGERS.	95							
						SAND BANDS UP TO 25% WITH MIPPLE LAMINATED BANDS ~ 25% => A-3	98							
320							100							
							100							
						337' to 338.5' B-2? DISRUPTED SAND BANDS IN ARG. VERY NARROW STRATIGRAPHIC INTERVAL. WITH QTZ-SID STRINGERS. SOME DISPLACEMENTS ON FRACTURES.	94							
330							100							
						346.5' to 347' GRADED SAND SAND? BOUMA SERIES ABCD COMPLETE? YOUNGING DOWN HOLE.	105							
340							100							
						348' B-2? OVER NARROW INT. (1")	100							

MACMILLAN JOINT VENTURE - DIAMOND DRILL RECORD

HOLE No. 81-29

CLAIM:

PROPERTY: CLEAR LAKE

PAGE No. 8 of 13

SECTION	COLOUR	BEDDINGS	FRACTURES	MINERAL.	GEOLOGY	COMMENTS:	% CORE RECOVERED	SAMPLE INTERVAL	B NUMBER	ASSAYS				
										DESCRIPTIVE GEOLOGY				
410						DITTO A-2-b								
						414.5 to 415.7' MASSIVE PYRITE (~50%) OCCURS AS STAINERS AND IRREGULAR AGGREGATES. ARG STILL SOFT. SOME SECTIONS LOCALLY SILICIFIED? TO MED GREY P ₄ TR. Sph, Spl. ? ~ POSSIBLE SOME BARITE?	108							
420						421' SILICIFIED SECT. WITH P ₄ .	105							
						428' to 430' DISRUPTED BEDS: SMALL SLIPS. QTZ-SID. STAINERS IRREG. P ₄ STAINERS.	99							
430						433' LOCAL BZ SAND FRAG IN ARG.	85							
						437' TO 445' ARG: SHEARED, WITH SMEARED QTZ STAINERS, BANDS AND IRREG. STAINERS OF P ₄	85							
440						443' BANDS OF FINE-GRAINED P ₄ . (1/2")	98							
						453' Sph & P ₄ IN QTZ-SID. STAINERS (3/8") CROSS-CUTTING, IRREG.	107							
450						454' S' AS 453	102							
						455' SILT WITH SAND LENSES 8" THICK. => A-2-c/A-3	102							
460						455' AS 453 FOLLOWED BY P ₄ (2", LARGE, FRACT'D)	102							
						456' AS 453 IRREG. VENS TO 1" THICK	102							

MACMILLAN JOINT VENTURE - DIAMOND DRILL RECORD

HOLE No. 81-29

CLAIM:

PROPERTY: CLEAR LAKE

PAGE No. 9 of 13

SECTION	COLOUR	BEDDING	FRACTURES	MINERAL	GEOLOGY	COMMENTS:	% CORE RECOVERED	SAMPLE INTERVAL & NUMBER	ASSAYS					
									DESCRIPTIVE GEOLOGY					
470						DITTO A-2-b	102							
480		65°				483' to 488' FAULT ZONE: ARG BEDS DISRUPTED, BROKEN SHEARED LACKS ABUNDANT QTZ-SID. STRINGERS TYPICAL OF OTHER FAULT ZONES, BUT APPEARS TO BE LOCALLY SILICEOUS. E IRREG. P ₁ STRINGERS, DISSEMINATED P ₁ (PORE FILLINGS IN SANDY SECTIONS).	92							
490						488' to 493 A-1 / A-2-a FEW SAND BANDS, SLIGHTLY SILICEOUS (IE HARDER THAN AV. ARG.) DISRUPTED ZONE WITH IRREGULAR P ₁ STRINGERS AT 489', 494'	102							
500		51°					98							
510						507' to 511' FELDSPAR PORPHYRY, PALE (AN), FINE-GRAINED WITH ~ 70% INDIVIDUAL FELDSPAR PHENOS ~ 2mm Ø CUT BY MATE QTZ-SID STRINGERS, FRACTURED, IN FAULT CONTACT WITH ARG. ~ 1% CRST METAL MINERAL DISSEM. IN RS.	106							
520		42°				511' to 525' .ARG. SHEARED. BEDS DISRUPTED, LOCAL ZONES OF QTZ-SID. STRINGERS, DISSEM. P ₁ < 1%.	96							
						525' to 537' BECOMES INCREASINGLY SHEARED, QTZ-SID. STRINGERS ABUNDANT, LOCAL ZONES OF FAULT IY 526', 530', 536' THICKER SAND BANDS (SS-2) AT 528, 530 SILTY 529/530'	107							

MACMILLAN JOINT VENTURE - DIAMOND DRILL RECORD

HOLE No. 81-29

CLAIM:

PROPERTY: CLEAR LAKE

PAGE No. 11 of 13

SECTION	COLOUR	BEDDING	FRACTURES	MINERAL	GEOLOGY	COMMENTS:	% CORE RECOVERED	SAMPLE INTERVAL B NUMBER	ASSAYS				
									DESCRIPTIVE GEOLOGY				
590						DITTO A-2-b/A-2-c	101						
						598' spl in Qtz-sid STAINER IN SAND BAND WITH P ₄	102						
600						604' TRUNCATED FORESET LAMELLAE IN RIPPLE LAMINATED SAND BAND INDICATE YOUNGING DOWN HOLE.	100						
610						607.5' to 610' FAULT ZONE SHEARED ARG WITH Qtz-sid. STAINERS (15%)	97						
							95						
620							103						
630							93						
640						640' to 646' ARG ~ BLK => VERY CARBONACEOUS	107						
							101						
						647.5' m,c ss-2 BAND ~ 6" THICK. SHOWS SANDING FINING DOWN HOLE => YOUNG DOWN HOLE							

MACMILLAN JOINT VENTURE - DIAMOND DRILL RECORD

HOLE No. 81-29

CLAIM:

PROPERTY: CLEAR LAKE

PAGE No. 12 of 13

SECTION	COLOUR	BEDDING	FRACTURES	MINERAL	GEOLOGY	COMMENTS:	% CORE RECOVERED	SAMPLE INTERVAL	B NUMBER	ASSAYS				
										DESCRIPTIVE GEOLOGY				
650						DITTO A-2-b/A-2-c TYPICALLY SHEARED. 650' to 660' SAND BANDS > 5% ~ A-3	89							
660						659' TRUNCATED FORESET LAMELLAE INDICATE YOUNGING DOWN HOLE.	93							
670							97							
							95							
680							100							
						689' THICK 8" f,m ss-1/ss-2 BANDS.	100							
690							98							
						696' to 700' FAULT ZONE HIGHLY SHEARED, BROKEN & GRAPHITIC.	110							
700							85							
						709' to 719' FAULT ZONE, HIGHLY SHEARED, BROKEN & GRAPHITIC.	94							

MACMILLAN JOINT VENTURE - DIAMOND DRILL RECORD

HOLE No. 81-29

CLAIM:

PROPERTY: CLEAR LAKE

PAGE No. 13 of 13

SECTION	COLOUR	BEDDING	FRACTURES	MINERAL	GEOLOGY	COMMENTS:	% CORE RECOVERED	SAMPLE INTERVAL B NUMBER	ASSAYS					
									DESCRIPTIVE	GEOLOGY				
710						DITTO: A-2-b								
720						720' ss-1/ss-2 m, c SAND BAND 2 FT THICK	92							
730							93							
740							93							
750						748.5' SILT WITH SAND LENSES ~1' THICK.	109							
760						754' LOGGING INDICATES YOUNGING DOWN HOLE	107							
						758' Bk QTZ-SID MATRIX 2"	110							
						END OF HOLE 763'	100							

MACMILLAN JOINT VENTURE - DIAMOND DRILL RECORD

HOLE No. 81-30

CLAIM:

PROPERTY: CLEAR LAKE

PAGE No. 3 of 13

SECTION	COLOUR	BEDDING	FRACTURES	MINERAL	GEOLOGY	COMMENTS:	% CORE RECOVERED	SAMPLE INTERVAL B NUMBER	ASSAYS				
110		62°				DESCRIPTIVE GEOLOGY DITTO A-3 TYPE BROKEN CORE TO 140'	106						
120				P ₂ N			140						
130		46°					129						
140				P ₄ N		140' to 169' 60%+ SAND BAND SS-2, f 45%, SS-1, f, 15%, THIN - TO 2" THICK. → A-3 TYPE	119						
150		92°		P ₃		147' TRUNCATED FORESET BEDS INDICATE YOUNGING DOWN HOLE.	107						
160			QTZ SS. S.S.			150' SAND BANDS BECOME SLIGHTLY COARSER FROM f to m.	121						
		29°		P ₂ N		159' TO 166' SHEARED/FAULTED A-3, BRECCIATED WITH NUMEROUS QTZ-SSO STRAINERS TO P ₄ . VERY CARBONACEOUS	106						

MACMILLAN JOINT VENTURE - DIAMOND DRILL RECORD

HOLE No. 81-30

CLAIM:

PROPERTY: CLEAR LAKE

PAGE No. 4 of 13

SECTION	COLOUR	BEDDING	FRACTURES	MINERAL	GEOLOGY	COMMENTS:	% CORE RECOVERED	SAMPLE INTERVAL B NUMBER	ASSAYS					
						DESCRIPTIVE GEOLOGY								
170				Spl		169' to 180' SILTY SECT. WITH <20% SAND SANDS, BUT E TWO SS-2/2 m, c 3" THICK, CARBONACEOUS WITH SAND LENSES < 5%. Tr Spl (YELLOW TO HONEY COLOURED)	105							
180				Rn Spl Rn		180' to SHEARED / FAULTED, BRECCIATED A-3 TYPE. QTZ-SID. STRANSEERS ABUNDANT. Tr Spl.								
190				Rn Spl		196' Spl IN CLUSTERS. 1/2" ϕ 196' to 204' INTENSELY SHEARED, GRAPHYIC. WITH QTZ-SID STRANSEERS.	97							
200				Spl			112							
210				Spl			111							
220				Spl			94							
				Spl			43							
				Spl			70							
				Spl			125							

MACMILLAN JOINT VENTURE - DIAMOND DRILL RECORD

HOLE No. 81-30

CLAIM:

PROPERTY: CLEAR LAKE

PAGE No. 6 of 13

SECTION	COLOR	BEDDING	FRACTURES	MINERAL	GEOLOGY	COMMENTS:	% CORE RECOVERED	SAMPLE INTERVAL B NUMBER	ASSAYS			
									DESCRIPTIVE GEOLOGY			
290						↑ 290' to ~307' PARALLEL (TO ARELY MAPLE) LAMINATED VERY FINE SANDSTONE/SILTST. SECT. IS FAULTED & CUT BY NUMEROUS QTZ-SID STRINGERS, LOCAL ZONES OF SILICA FLOODING (WH. QTZ) LOCAL P ₂ WITH QTZ MATRIX ORANGE sph occurs in QTZ-SID STRINGERS. (298' to 303' <1%) UNIT 1 SS-2 ↓	105					
300						H						
310						304' to 316' VERY CARBONACEOUS, SILICEOUS FAULT ZONE ARG. SST. & QTZ FRAGS IN CHEATED GRAPHITIC MATRIX (20%) BLACK CNT 308' = SILICIFIED ARG.	105					
320						~ 316' to BLACK VERY CARBONACEOUS ARG. LOCALLY SILICEOUS, SHEARED AND DECCATED. QTZ-SID STRINGERS COMMON, LOCALLY ABUNDANT. SANDY SECT'S (SAND BANDS) PRESERVED, (C) ORIGINALLY A-2/A-3 TYPE ROCK? P ₂ DISSEMINATED IN BANDS TO 1/8" OR AS IRREG STRINGERS IN QTZ RICH ZONES. P ₂ <1% NOTE: P ₂ LAMELLAE: 1/16" VERY FAINT, VERY FINE-GRAINED. AT 1/4" INTERVALS IN SILICEOUS ARG.	101					
330							83					
340							107					
							100					
						247' to P ₂ INCREASING AS WIDTHS: " 2" AND BANDS 1/4" THICK	108					
							111					

MACMILLAN JOINT VENTURE - DIAMOND DRILL RECORD

HOLE No. 81-30

CLAIM:

PROPERTY: CLEAR LAKE

PAGE No. 9 of 13

SECTION	COLOUR	BEDDINGS	FRACTURES	MINERAL	GEOLOGY	COMMENTS:	% CORE RECOVERED	SAMPLE INTERVAL B NUMBER	ASSAYS				
									DESCRIPTIVE GEOLOGY				
470						DITTO - FAULT ZONE.	101						
480						FAULT ZONE CONT'D ALSO HAS FRACS OF FRAG'S (?) MAINLY QTZ / QTZ-SID STRANDED FRASS IN QTZ MATRIX. Tr Spl, P ₂ < 1%. MATRIX ~ 5% RESTRICTED TO RELATIVELY THIN GRAPHIC SHEAR PLANES. - ZONE SILICIFIED? GYPSUM AS THIN (c/mm) COATINGS ON FRACTURE SURFACES IS COMMON.	111						
490							140						
500							105						
510							108						
520						515' 1' INTERVAL PERVASIVE SILICIFICATION. 518' to 631.5' PARALLEL LAMINATED, VERY FINE SAND TO SILTSTONE. RARELY WITH P ₄ BANDS (to 1/8" THICK)	95 91						
530						529' to 531' FAULT ZONE. HIGHLY SHEARED & FILLED.	108						

38°

60°

50

MACMILLAN JOINT VENTURE - DIAMOND DRILL RECORD

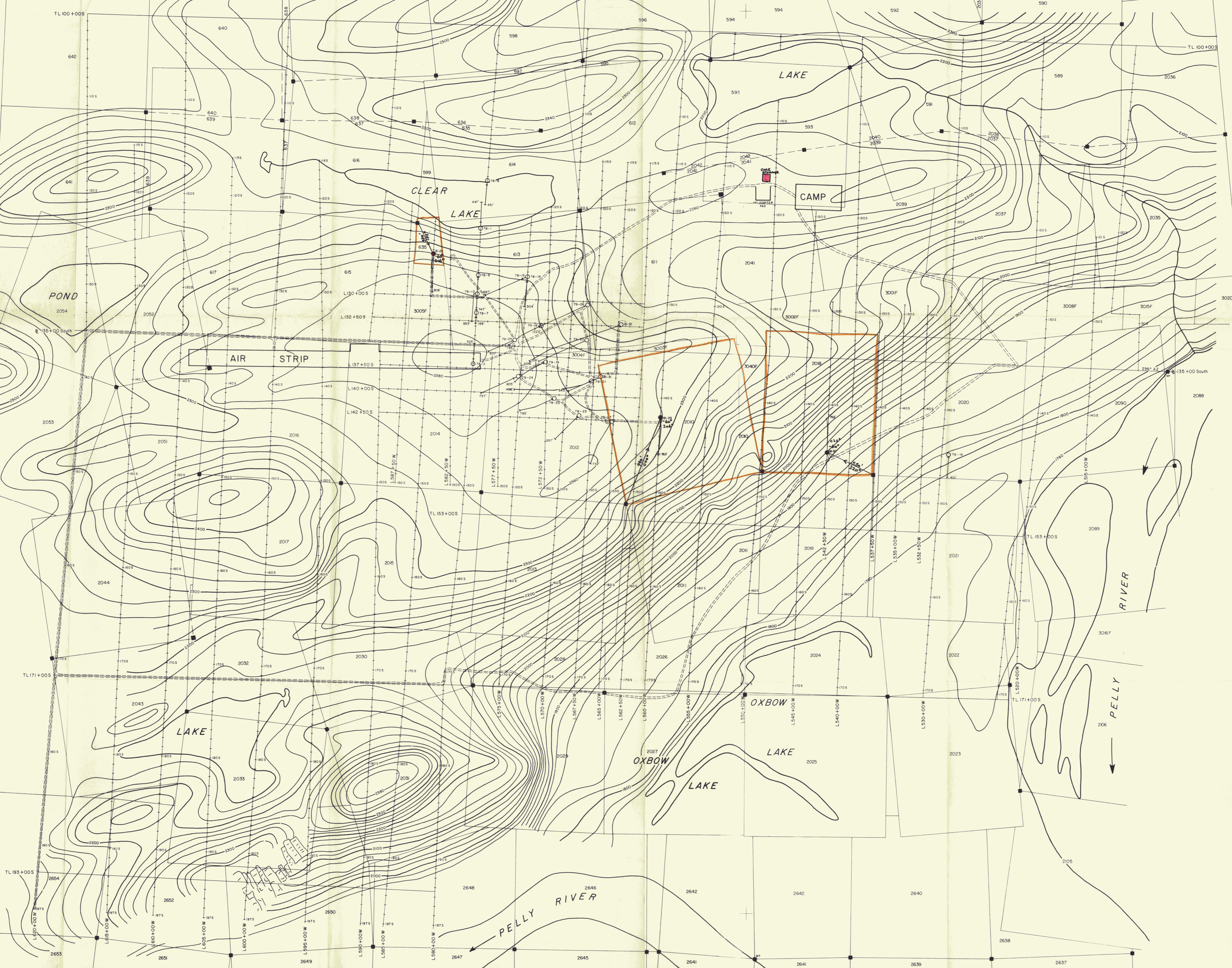
HOLE No. 81-30

CLAIM:

PROPERTY: CLEAR LAKE

PAGE No. 13 of 13

SECTION	COLOUR	BEDDING	FRACTURES	MINERAL	GEOLOGY	COMMENTS:	% CORE RECOVERED	SAMPLE INTERVAL 8 NUMBER	ASSAYS				
									DESCRIPTIVE GEOLOGY				
710						DITTO A-2/A-3	106						
720		10°	~			720' to 748' FAULT ZONE: SHEARED MRS WITH ABUNDANT QTZ-SID. STRINGERS. LOC. P ₄	128						
730			~				116						
740			~				113						
750	c c	31°	~				102						
760						END OF HOLE 756'							



LEGEND

- Diamond Drill Hole, date, number, depth
- Cut grid line, station number
- Contour elevation, contour interval 20 feet
- Claim post location and Sue Claim Number
- Claim overlap
- Cliff or bluff
- Road

FEET 200 0 200 400 600 800

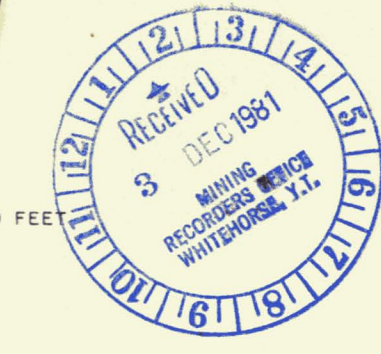


FIGURE 1

MACMILLAN TOWN VENTURE

DIAMOND DRILL HOLE LOCATION

DRAWN BY	DATE
CHECKED BY	DRAWING No.
IN T.S.	SCALE

Getty Canadian Metals, Ltd.