



1981 GEOLOGICAL and GEOCHEMICAL REPORT

on the

NOON CLAIM GROUP

HOOCHKOO CREEK AREA

by

L. L. Coughlan

and

R. J. Joy,  
United Keno Hill Mines Ltd.,  
409 Black Street,  
Whitehorse, Yukon  
Y1A 2N2

Dated: November 19th, 1981

N.T.S. Sheet - 1151-7  
Latitude - 62° 25' N  
Longitude - 136° 45' W  
Dates - April 27th to September  
7th, 1981

090929

This report has been examined by  
the Geological Evaluation Unit  
under Section 52 (4) Yukon Quartz  
Mining Act and is allowed as  
representation work to the amount  
of \$ 54,200.

*R. Watson*

*for* Regional Director, Exploration and  
Geological Services for Commissioner  
of Yukon Territory.

## TABLE of CONTENTS

	<u>Page Number</u>
SUMMARY and CONCLUSIONS .....	1
RECOMMENDATIONS .....	2
INTRODUCTION .....	3
LOCATION and ACCESS .....	3
PROPERTY .....	4
LINE CUTTING .....	4
<u>GEOLOGY:-</u>	
General .....	5
Alteration .....	5
Mineralization .....	6
<u>GEOCHEMISTRY:-</u>	
General .....	6
Interpretation of Results .....	6
GEOPHYSICS .....	7
REFERENCES .....	8

APPENDIX A: LOGISTICS

APPENDIX B: AFFIDAVIT

APPENDIX C: PERSONNEL and CONTRACTORS EMPLOYED

APPENDIX D: ASSAY SAMPLE DATA

APPENDIX E: SOIL SAMPLE STATISTICS

APPENDIX F: STATEMENT of QUALIFICATIONS

### FIGURES:

Figure 1	Location Map
Figure 2	Property Map

MAPS in POCKET:-

GEOLOGY 1:5,000

GEOCHEMISTRY - Copper Plots 1:5,000

## SUMMARY and CONCLUSIONS:-

The NOON Property consists of 130 contiguous full claims. Twenty-two (22) of these were added in 1981 to cover possible extensions of copper anomalies in soil samples.

Geological and geochemical surveys were conducted over about 60% of the property during 1980. Between April 27th and May 20th, 1981, contract crews established a 200m grid over the southeast two-thirds of the property. This involved cutting 73.6 km of baselines and picketlines.

During the period May 18th to September 7th, a two to four person crew completed geological and geochemical surveys over the claim group. A total of 3412 soil samples were collected and analysed for copper. Silver analyses were carried out on 853 of these samples. No anomalous silver values were returned.

The copper results revealed a number of low-order, single-value highs with few, if any, supportive values. Two significant anomalous area, A and B respectively, were defined. Area B contains a single strong (100 ppm plus copper) anomaly about 330m long by 30 to 120m wide. Other small anomalies are present along a northwest trend. Unfortunately, this area may be underlain by volcanics and overburden.

Area A includes several strong (peak 370 ppm) anomalies in an area 500m long by 230 to 330m wide. This anomaly is open to the southeast where it extends off the claim group. There is no outcrop exposure in this immediate area. Upslope outcrops consist of granodiorite and amphibolite.

The NOON Claims are underlain by generally unaltered granodiorite. However, in a few areas it is highly siliceous. Petrographic work on the silicified granodiorite should be carried out to determine the similarities between this silicification and that present in the mineralized zones at DEF and STU.

In late May and early June a Dighem<sup>II</sup> airborne electromagnetic and magnetometer survey was flown over the NOON Claims and adjacent areas. Plots were prepared for electromagnetic, magnetic, and resistivity data. The high resistivities (greater than 100 ohm-m) probably indicate areas underlain by granodiorite. Volcanics or thick, possibly conductive, overburden generally underlie areas of low resistivity. Highly variable magnetic and electromagnetic responses are also characteristic of the Tertiary volcanics.

In view of the limited exposure (less than 5%), the geophysical data will be very useful as a mapping tool.

No copper mineralization was observed during the mapping program. However, moderately foliated granodiorite was encountered in several areas.

The volcanic rocks east of the property are known to contain weak copper mineralization to the north and southeast of the property. Several reconnaissance soil sample traverses in this area might help in evaluating these volcanics for significant deposits.

RECOMMENDATIONS:-

It is recommended that additional ground be staked to cover the possible extension of copper anomalies in Area A.

It is also recommended that bulldozer trenching be utilized to examine some of the copper soil anomalies.

It is further recommended that consideration be given to prospecting the volcanics along the eastern margin of the property.



## INTRODUCTION:-

The evaluation of the NOON Claims continued during the 1981 field season. Work began in late April when contract crews started linecutting. Geological and geochemical crews were moved to the property on May 18th. These surveys began in early June after sufficient survey control data had been gathered.

The two-person geological crew completed the mapping by July 27th. Two to four person geochemical crews worked intermittently until September 7th. By that time, all claims had been covered including the 22 claims added during 1981.

During late May and early June, an airborne electromagnetic and magnetometer survey was carried out over the NOON Claims and adjacent areas.

## LOCATION and ACCESS:-

The NOON Claims lie about 129 miles north-northwest of Whitehorse (Figure 1) and covers the area immediately northwest of the Williams Creek Property. It is situated at the latitude  $62^{\circ} 25' N$ , longitude  $136^{\circ} 45' W$  on N.T.S. Sheet 115I-7.

Access was by helicopter from Carmacks which lies about 26 miles to the southeast. An abandoned sawmill clearing adjacent to the Klondike Highway about five miles northeast of the property was utilized as a staging area.

PROPERTY:-

The NOON Claim Group (Figure 3) consists of 130 contiguous full claims as follows:-

<u>CLAIM NAME</u>	<u>GRANT NUMBER</u>	<u>RECORD DATE</u>	<u>EXPIRY DATE*</u>
NOON 1-18	YA48868 - YA48885	23 May 80	23 May 86
NOON 19 & 20	YA48886 & YA48887	23 May 80	23 May 84
NOON 21-36	YA48888 - YA48903	23 May 80	23 May 86
NOON 37 & 38	YA48904 & YA48905	23 May 80	23 May 84
NOON 39 - 54	YA48906 - YA48921	23 May 80	23 May 86
NOON 55 & 56	YA48922 & YA48923	23 May 80	23 May 84
NOON 57 - 72	YA48924 - YA48939	23 May 80	23 May 86
NOON 73 & 74	YA48940 & YA48941	23 May 80	23 May 84
NOON 75 - 90	YA48942 - YA48957	23 May 80	23 May 86
NOON 91 - 93	YA48958 - YA48960	23 May 80	23 May 84
NOON 94	YA48961	23 May 80	23 May 86
NOON 95	YA48962	23 May 80	23 May 84
NOON 96 - 108	YA48963 - YA48975	23 May 80	23 May 86
NOON 109-115	YA60035 - YA60041	14 May 81	14 May 82
NOON 116-130	YA62040 - YA62054	11 August 81	11 August 82

\*Expiry dates for NOON 1-108 includes assessment credits for work done during the period May 23, 1980 to May 23, 1981. This work was filed in March of 1981.

LINE CUTTING:-

A 200m grid was established over the southeast two thirds of the claim group. This work was carried out between April 27th and May 20th, 1981 by contract crews from Eastern Associates Reg'd of Whitehorse.

Several baselines (330°) and tielines (060°) were established for control. Picketlines were established orthogonal to the baselines at 200m intervals. Markers were placed at 50m intervals along all lines. A total of 73.6 km (45.8 mi) of line grid was established.

The geology and geochem crews spent several days tying-in claim posts, old geochem lines, and topographic features to facilitate plotting data on a 1:5,000 basemap. This base map was prepared by photoenlarging a 1:50,000 topographic map.

## GEOLOGY

### GENERAL:-

A crystalline biotite-hornblende granodioritic intrusive underlies the NOON Property. This medium to coarse-grained granodiorite is generally porphyritic with plagioclase phenocrysts, ranging from 1 to 4 cm in length, in an equigranular matrix. The ferromagnesian minerals are dominantly prismatic amphibole (hornblende) and biotite which compose about 10 to 20% of the rock. Accessory magnetite of less than 1% is common.

In places, the granodiorite is moderate to well foliated with biotite defining the foliation. An average attitude of 170°/60E was measured throughout the central part of the property.

Siliceous veining is common in the well foliated rocks. Less than 1% pyrope garnets are present in these veins. Silicification of the granodiorite has increased cryptocrystalline silica percentages up to 65%.

Irregular pegmatite and aplite dykes cut the granodiorite, however, the contacts are always sharp. The pegmatite consists of interlocking quartz and feldspar crystals with thin books of biotite. Less than 1% accessory magnetite is present. The aplite is usually fine-grained and more abundant than the pegmatites. It contains less than 2% mafics. Irregular lenses of pegmatitic material are found within some aplite dykes.

Volcanic rocks of the Whitehorse Trough lie to the east of the north-northwest trending fault that defines the valley along the northeast side of the property. These volcanics are typically fine-grained, dark green andesites and light to dark green trachyandesite. Phenocrysts of prismatic amphibole and pyroxene compose about 3% of the rock. Also, phenocrysts of pale green to buff colored feldspars constitute about 10% of the rock and yield a trachytic flow texture. Vesicular and amygdaloidal varieties were observed. The amygdules are generally filled with carbonate. Narrow veinlets of epidote, quartz and calcite are common.

Only a few exposures were examined in this area while following up a copper soil anomaly from 1971 surveys (Mitchell). No copper mineralization was observed.

### ALTERATION:-

Epidote and chloritized biotite are common throughout the intrusive. The epidote is probably a result of deuteric alteration. Chlorite replaces biotite and may be a result of retrograde metamorphism.

Narrow quartz-epidote veinlets were noted in several outcrops.

Silicified (up to 65%) granodiorite was noted in several places. Cryptocrystalline silica probably replaced the felsic minerals in the granodiorite. The precise nature and distribution of this material is not known.

### MINERALIZATION:-

No copper mineralization was observed during the mapping. Several character samples were submitted for assay. These samples did not contain significant copper (Appendix D). Several samples contained up to 0.22 oz/ton silver. Soil geochemistry and geological investigations did not suggest that any significant silver mineralization might be present. Reassaying of the samples gave near identical results. A check with the assay laboratory confirmed that high-grade silver ore had been crushed before these samples. Therefore, incomplete cleaning of the crusher probably resulted in the contamination.

Although no copper mineralization was observed in the volcanics to the east of the property, several quartz veins containing bornite and chalcopyrite have been reported one or two kilometers to the southeast.

### GEOCHEMISTRY

#### GENERAL:-

A two-man crew conducted a reconnaissance soil sample survey over that portion (35%) of the property not completed in 1980 as well as the 22 claims staked in 1981. Blazed claim lines (310°) were used as baselines. Samples were collected at 30m intervals along lines run perpendicular to the baselines at 100m intervals. Since outcrop was limited, the geology crew assisted with the running of lines. Mattocks were used to obtain the soil samples.

A total of 3412 soil samples were collected during this survey. All samples were analysed for copper by Bondar Clegg and Company Ltd. of Whitehorse using standard analytical techniques. Eight hundred and fifty-three (853) were also analysed for silver. No anomalous silver values were returned. The highest value returned was 0.6 ppm.

#### INTERPRETATION of RESULTS:-

With the exception of the two areas discussed below, the results revealed a number of scattered, low-order (50-99 ppm) copper anomalies (Maps in Pocket). These anomalies are generally single value highs with few, if any, supportive values. Six (6) moderate to strongly anomalous values define fine (5) isolated anomalies.

Two areas, A and B respectively, contain a number of strongly anomalous values. Area A includes five separate moderate to strong copper anomalies. Four of these northwest trending multivalue anomalies are confined within an area about 500m long and 230 to 330m wide. This area is open to the southeast. The highest value (370 ppm Cu) was for a sample collected on the boundary of the property.

Area B contains several low-order and moderate to strong copper anomalies. The northwest trend exhibited by the smaller anomalies reflects the overall trend of the anomalous area. One strong (100 ppm) anomaly (peak value 164 ppm) covers an area about 330m in length and from 30 to 120m in width (NOON southwest, copper plot in pocket). Other moderately anomalous values are present as single values highs with few supportive values.

A third area, Area C, was sampled to follow-up a small copper anomaly (peak value 1090 ppm) to the north of the claim group. This anomaly was revealed in samples from an earlier survey by Hudson Bay Oil and Gas (Mitchell, 1971). A hand trench by Hudson Bay Oil & Gas crews in the vicinity of the anomalous sample did not reach bedrock. Sampling in 1981 did not locate this anomaly. However, the copper background over the volcanics in this area was slightly higher than over the intrusives. It is possibly because of control difficulties that the 1981 samples were not collected in the same area as the previous samples.

No mineralization was noted in the outcrops to the north of the small 1981 grid.

#### GEOPHYSICS:-

An airborne electromagnetic (Dighem <sup>II</sup>) and magnetometer survey was flown over the NOON Claims as part of a large survey of United Keno's properties in the Minto Area. This survey was flown by Dighem Limited of Toronto during May and June, 1981.

Data from the survey were plotted on 1:15,000 scale maps. Maps were prepared for electromagnetic, resistivity, magnetics and enhanced magnetics for each area. Those maps (Sheet C-3) are included in a separate report entitled "Dighem <sup>II</sup> Survey of Carmacks Area, Yukon" for United Keno Hill Mines Limited by Dighem Limited.

Area B on the geochem plot and the Williams Creek No. 2 Zone to the southwest lie within a resistive area (greater than 1000 ohm-m). The high resistivity area probably indicate areas underlain by intrusive with shallow overburden cover. Area A, however, lies within a broad resistivity low. This low projects northeast along the creek and may reflect conductive overburden and volcanics. A weak X-type E.M. response correlates with a resistivity low (316 ohm-m) in this area.

A grade 2 E.M. anomaly and an X-type response define a northwest trend a short distance northeast of Area A geochem anomalies. These were interpreted to be surface responses.

The magnetic and enhanced magnetic maps are more informative in that an east-west trending, magnetically responsive zone passes through or just south of Area A. This zone correlates closely with the known exposures of volcanic rocks. Hence, <sup>this</sup> would suggest that the anomalies in Area A may reflect transported material, mineralized volcanics, or water transported copper from mineralization at depth.

Area B copper anomalies are correlative with the southwest peak of a triple-peaked northwest-trending magnetic anomaly. This 1000 gamma magnetic anomaly may reflect sub-cropping amphibolite. Earlier mapping revealed the presence of several small amphibolite exposures in this area.

REFERENCES:-

- Mitchell, D. C., 1971, "Report on Geochemical Soil and Magnetometer Surveys" Assessment Report, BAY Claims by Hudson Bay Oil and Gas, D.I.A.N.D. Open File, U.K.H.M. Files.
- Newman, D. and Joy, R. J., 1980, 1980 Geological and Geochemical Report on the NOON Claim Group, Hoochekoo Creek Area, N.T.S. 115I-7; U.K.H.M. Files
- Olson, D. P., Geophysical and Geochemical Report on the BAY Claim, Hoochekoo Creek Area, Y.T., Hudson Bay Oil and Gas, D.I.A.N.D. Open File, U.K.H.M. Files.
- Templeman-Kluit, D.J., 1974, Compilation map of Carmacks Area, G.S.C., Open File 200.

## APPENDIX A

### LOGISTICS

PROJECT: Project No. 47 - NOON Claim Group

TERRAIN: Semi-Mountainous

MAIN BASE: Whitehorse

OPERATING CAMPS: Five, at strategic locations

CREW: Geologist, Assistant, and two soil samplers

SUPPORT AIRCRAFT: Bell 206B Jet Ranger, helicopter Trans North Turbo Air, Carmacks, Y.T.

HELICOPTER UTILIZATION: A total of 25.9 hours were utilized for camp moves and supply. Of this, 3.1 hours were flown in support of the line cutters.

#### OPERATING MAN DAYS:

	<u>May</u>	<u>June</u>	<u>July</u>	<u>Aug.</u>	<u>Sept.</u>	<u>Total</u>	<u>%</u>
Possible days	52	120	98	18	18	306	
Operating days	44	87	39	11	12	193	63
Lost days -							
Camp moves	4	6	6	2	6	24	8
R & R	-	6	28	-	-	34	11
Weather & Other	4	21	25	5	-	55	18

NOON PROJECT COSTS - May 23\* to November 30, 1981

GENERAL:-

Salaries and Wages	\$ 7,404.00	
Hiring	1,970.00	
Publications and Maps	61.00	
Travel-Staff	1,132.00	
	<u>10,567.00</u>	\$10,567.00

PROPERTY ACQUISITION:-

Recording Fees	228.00	228.00
----------------	--------	--------

GEOLOGICAL:-

Company Labour	12,721.00	
Freight & Transportation	151.00	
	<u>12,872.00</u>	12,872.00

GEOCHEMICAL:-

Company Labour	9,728.00	
Equipment and Supplies	166.00	
Contract Analyses	12,580.00	
	<u>22,474.00</u>	22,474.00

ASSAYING and RESEARCH:-

Company Assaying	187.00	
Petrographic	218.00	
	<u>405.00</u>	405.00

CAMP OPERATION:-

Equipment and Supplies	648.00	
Food	2,963.00	
Fuel	76.00	
Equipment Repair	182.00	
	<u>3,869.00</u>	3,869.00

AIRCRAFT:-

Helicopter Charter	11,306.00	11,306.00
--------------------	-----------	-----------

VEHICLES:-

Operating Supplies & Maintenance	212.00	<u>212.00</u>
----------------------------------	--------	---------------

TOTAL \$61,933.00

\*May 23 marks beginning of a new year for assessment work credits.

APPENDIX B

A F F I D A V I T

I, Robert E. Van Tassell, of Whitehorse, in the Yukon Territory,  
Exploration Superintendent, do solemnly declare:

1.

That I am duly appointed agent of United Keno Hill Mines Limited,  
and except where otherwise stated have a personal knowledge of the  
facts and matters herein, and swear to the value of work contained  
in Appendix A.

And I make this solemn declaration conscientiously believing it to  
be true and knowing that it is of the same force and effect as if  
made under oath and by virtue of the Canada Evidence Act.

Declared before me at

Whitehorse, in

The Yukon Territory,

this 29th day of

December 1981.

Robert E. Van Tassell

[Signature]  
Notary Public

APPENDIX C

PERSONNEL and CONTRACTORS EMPLOYED

GEOLOGICAL MAPPING by:-

Laura Lee Coughlan  
1827 Lorraine Ave.,  
Ottawa, Ontario  
K1H 6Z7

May 18 - July 27

Assisted by:-

Colleen Elliott  
4506 Montague St.,  
Regina, Sask.  
S4S 3K7

May 18 - July 27

GEOCHEMICAL SAMPLING by:-

Steven Burtch  
22 Greenwood Trail,  
Brantford, Ontario  
M3R 6G5

May 20 - July 23

Bradley Leonard  
576 Brimley Road,  
Scarborough, Ontario  
M1J 1B3

May 20 - July 23

Shelly Hobbs  
P. O. Box 280,  
Deloraine, Manitoba  
ROM 0M0

August 5 - August 13

Jennifer Wahlroth  
274 Bellsize Drive,  
Toronto, Ontario

August 5 - August 13

Bruce Kramarchuk  
P. O. Box 167,  
Carberry, Manitoba  
ROK 0H0

September 2 - September 4

John Rancourt  
538 Platts Lane,  
London, Ontario

September 2 - September 4

Steven McGibbon  
510 Frontenac St., Apt. 1,  
Kingston, Ontario  
K7L 4M1

September 2 - September 7

Ian Spooner  
104 Cliff Crescent,  
Kingston, Ontario  
K7M 1A8

September 2 - September 7

CLAIM STAKING and LINECUTTING by:-

Eastern Associates,  
P. O. Box 4152,  
Whitehorse, Yukon

HELICOPTER SUPPORT by:-

Dean Cameron,  
Trans North Turbo Air,  
Carmacks, Y.T.

GEOCHEMICAL ANALYSIS and ROCK ASSAYS by:-

Bondar-Clegg and Company Ltd.,  
136B Industrial Rd.,  
Whitehorse, Yukon  
Y1A 4X1

GEOPHYSICAL SURVEY by:-

Dighem Limited,  
Toronto, Ontario

SUPERVISED by:-

R. J. Joy,  
Senior Exploration Geologist,  
United Keno Hill Mines Limited,  
409 Black Street,  
Whitehorse, Yukon  
Y1A 2N2

APPENDIX D

ASSAY SAMPLE DATA

**UNITED KENO HILL MINES LIMITED**  
**EXPLORATION DEPARTMENT — 409 BLACK — WHITEHORSE**

**ASSAY RESULT FORM**

DATE			Tag No.	Location and Description	ASSAY RESULTS							
Mo	Yr.				Au oz/ton	Ag oz/ton	Pb %	Zn %	Cu %	Mo %	W %	
9	6	81	4926	2LC4 coarse grained, weakly foliated granodiorite		0.19			0.01			
9	6	81	4927	4LC5 coarse grained, well foliated granodiorite		0.16			0.01			
9	6	81	4928	6LC1 coarse grained, weakly foliated granodiorite, 10% epidote		0.22			0.01			
9	6	81	4929	8LC7 c-gr well-fol granodiorite in contact with f. gr. aplite		0.20			0.01			
9	6	81	4930	12LC3 f.gr., dark green andesite, with quartz-epidote veinlets	0.002	0.13			0.01			
9	6	81	4931	12LC4 f. gr., dark green trachyandesite, 1% magnetite	0.002	0.04	0.02	0.03	0.01			
9	6	81	4932	5CE4 well-foliated gdm dissected by pegmatitic veins		0.05			0.01			
9	6	81	4933	7CE11 a well-fol Pgd		0.05			0.01			
9	9	81	2920	2LC5 mod-fol Pgd		0.05			0.01			
9	9	81	2921	3LC1 mod-fol Pgd		0.05			0.01			
9	9	81	2922	8LC5 well-fol gdm with epidote veinlets		0.05			0.01			



S. L. SMITH'S STATISTICS

Project: 47 NOON Claims      Dates of Program: May 20  
to Sept. 6, 1981

Number of Samples Collected: 3412

Metals Analyzed: Cu    Ag

Samplers: See Appendix C

Mon days: 154 possible, 110 operating

Samples collected / man-day: 31 per operating day  
22 average for season

Pb

Values in ppm	No. in Range	% of Total	Values in ppm	No. in Range	% of Total
			0 - 49	3237	94.9
			50 - 99	151	4.4
			100 - 199	21	0.6
			200+	3	0.1
				<u>3412</u>	<u>100.0</u>

Zn

Values in ppm	No. in Range	% of Total	Values in ppm	No. in Range	% of Total
0 - 0.6	853	100			

Ag

Values in ppm	No. in Range	% of Total	Values in ppm	No. in Range	% of Total

APPENDIX F

STATEMENT OF QUALIFICATIONS

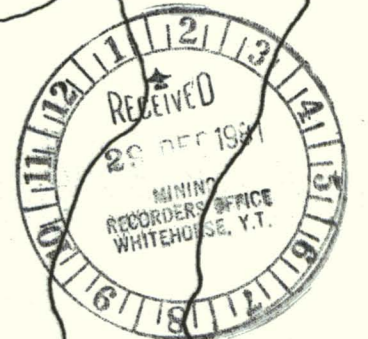
I, Richard J. Joy, of the City of Whitehorse, Yukon Territory, do hereby certify that:

1. I am a geologist, residing at 20 Stewart Road, Whitehorse, Yukon Territory.
2. I have received a B. Sc. (honours) in Geology from Memorial University of Newfoundland.
3. I have attained the status of Fellow in the Geological Association of Canada.
4. I have been actively engaged in the mineral exploration field since 1968.
5. I am presently employed as Senior Exploration Geologist with United Keno Hill Mines Limited.
6. I have supervised the work described in this report.

Dated at Whitehorse this 22nd day of December, 1981

*R. Joy*

NOON 24 YA 48869	NOON 14 YA 48868	NOON 204 YA 48867	NOON 194 YA 48866	NOON 384 YA 48905	NOON 374 YA 48904	NOON 564 YA 48923	NOON 554 YA 48922	NOON 744 YA 48941	NOON 734 YA 48940	NOON 924 YA 48959	NOON 914 YA 48958		
4 4 YA 48871	3 4 YA 48870	22 4 YA 48869	21 4 YA 48868	40 4 YA 48907	39 4 YA 48906	58 4 YA 48925	57 4 YA 48924	76 4 YA 48943	75 4 YA 48942	94 4 YA 48961	93 4 YA 48960		
6 4A YA 48873	5 4 YA 48872	24 4 YA 48891	23 4C YA 48890	42 4 YA 48909	41 4E YA 48908	60 4 YA 48927	59 4 YA 48926	78 4G YA 48945	77 4 YA 48944	96 4I YA 48963	95 4 YA 48962		
8 4 YA 48875	7 4 YA 48874	26 4 YA 48893	25 4 YA 48892	44 4 YA 48911	43 4 YA 48910	62 4 YA 48929	61 4 YA 48928	80 4 YA 48947	79 4 YA 48946	98 4 YA 48965	97 4 YA 48964		
10 4 YA 48877	9 4 YA 48876	28 4 YA 48895	27 4 YA 48894	46 4 YA 48913	45 4 YA 48912	64 4 YA 48931	63 4 YA 48930	82 4 YA 48949	81 4 YA 48948	100 4 YA 48967	99 4 YA 48966		
12 4 YA 48879	11 4 YA 48878	30 4 YA 48897	29 4 YA 48896	48 4 YA 48915	47 4 YA 48914	66 4 YA 48933	65 4 YA 48932	84 4 YA 48951	83 4 YA 48950	102 4 YA 48969	101 4 YA 48968		
14 4 YA 48881	13 4 YA 48880	32 4 YA 48899	31 4 YA 48898	50 4 YA 48917	49 4 YA 48916	68 4 YA 48935	67 4 YA 48934	86 4 YA 48953	85 4 YA 48952	104 4 YA 48971	103 4 YA 48970		
116 5 YA 62040	115 5 YA 60041	16 4 YA 48885	15 4 YA 48882	34 4 YA 48901	33 4 YA 48900	52 4 YA 48919	51 4 YA 48918	70 4 YA 48937	69 4 YA 48936	88 4 YA 48955	87 4 YA 48954	106 4 YA 48973	105 4 YA 48972
117 5B YA 62041	114 5 YA 60040	18 4 YA 48885	17 4D YA 48884	36 4 YA 48903	35 4F YA 48902	NOON 544 YA 48921	NOON 534 YA 48920	72 4 YA 48939	71 4H YA 48938	NOON 490 YA 48957	NOON 489 YA 48956	NOON 4108 YA 48975	NOON 4107 YA 48974
118 5 YA 62042	113 5 YA 60039	112 5 YA 60038	111 5 YA 60037	128 5 YA 62052	127 5 YA 62051	NOON 5109 YA 60039	NOON 5110 YA 60036						
120 5 YA 62044	119 5 YA 62043	124 5 YA 62048	123 5 YA 62047	NOON 5130 YA 62054	NOON 5129 YA 62053								
NOON 1225 YA 62046	NOON 1215 YA 62045	NOON 1265 YA 62050	NOON 1255 YA 62049										



**LEGEND**

A to I Groupings

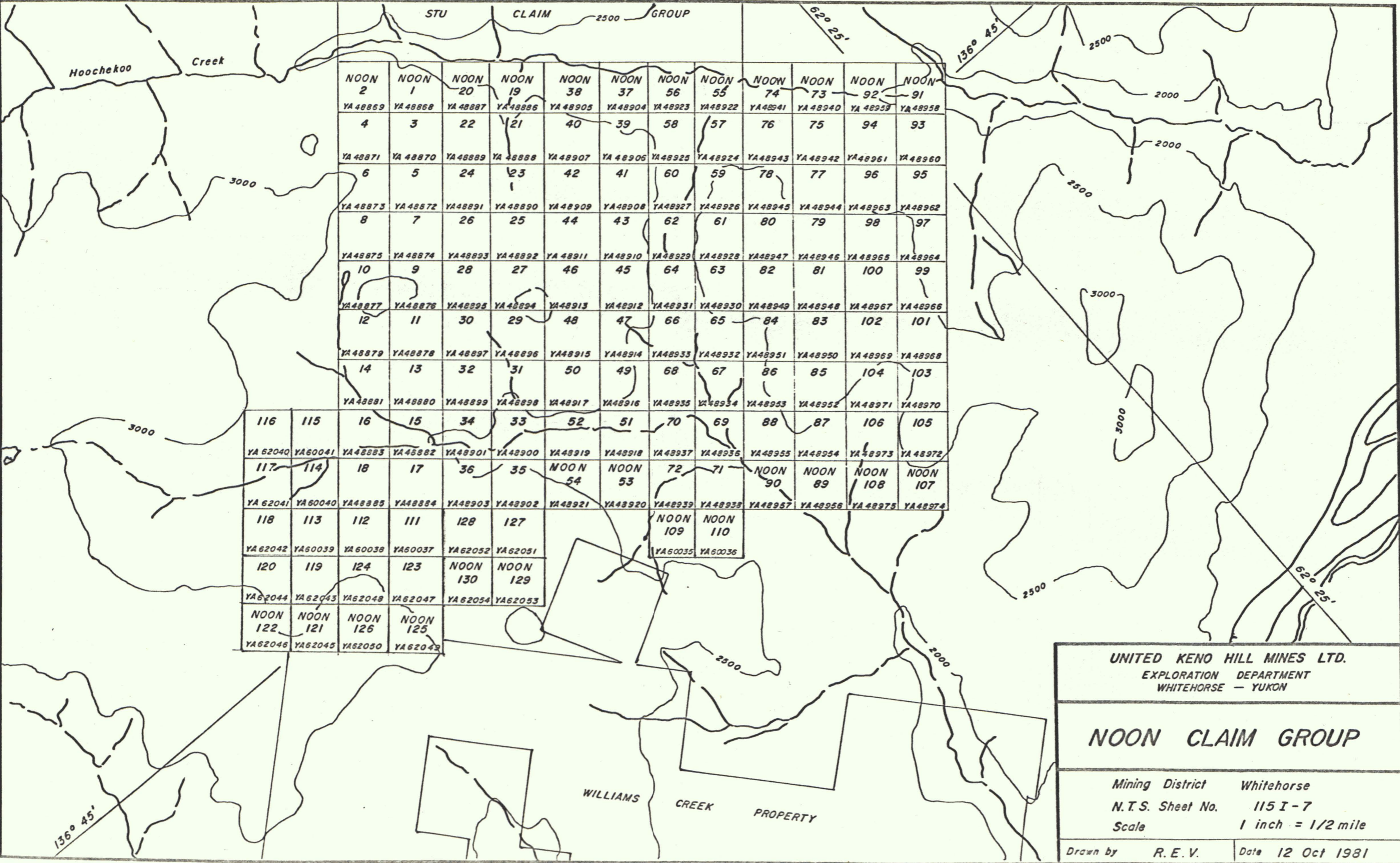
4 or 5 Years of credit applied for

UNITED KENO HILL MINES LTD.  
EXPLORATION DEPARTMENT  
WHITEHORSE - YUKON

**NOON CLAIM GROUP**

Mining District Whitehorse  
N.T.S. Sheet No. 115 I - 7  
Scale 1 inch = 1/2 mile

Drawn by R.E.V. Date 12 Oct 1981



UNITED KENO HILL MINES LTD.  
EXPLORATION DEPARTMENT  
WHITEHORSE - YUKON

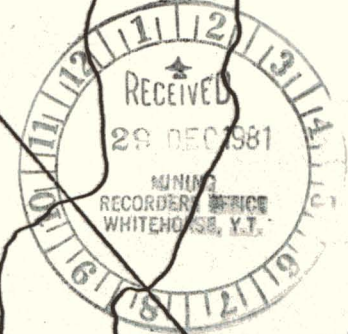
**NOON CLAIM GROUP**

Mining District Whitehorse  
N.T.S. Sheet No. 115 I-7  
Scale 1 inch = 1/2 mile

Drawn by R.E.V. Date 12 Oct 1981

Hoochekoo Creek

NOON 2 YA 48869	NOON 1 YA 48868	NOON 20 YA 48887	NOON 19 YA 48886	NOON 38 YA 48905	NOON 37 YA 48904	NOON 56 YA 48923	NOON 55 YA 48922	NOON 74 YA 48941	NOON 73 YA 48940	NOON 92 YA 48959	NOON 91 YA 48958		
4 YA 48871	3 YA 48870	22 YA 48889	21 YA 48888	40 YA 48907	39 YA 48906	58 YA 48925	57 YA 48924	76 YA 48943	75 YA 48942	94 YA 48961	93 YA 48960		
6 YA 48873	5 YA 48872	24 YA 48891	23 YA 48890	42 YA 48909	41 YA 48908	60 YA 48927	59 YA 48926	78 YA 48945	77 YA 48944	96 YA 48963	95 YA 48962		
8 YA 48875	7 YA 48874	26 YA 48893	25 YA 48892	44 YA 48911	43 YA 48910	62 YA 48929	61 YA 48928	80 YA 48947	79 YA 48946	98 YA 48965	97 YA 48964		
10 YA 48877	9 YA 48876	28 YA 48895	27 YA 48894	46 YA 48913	45 YA 48912	64 YA 48931	63 YA 48930	82 YA 48949	81 YA 48948	100 YA 48967	99 YA 48966		
12 YA 48879	11 YA 48878	30 YA 48897	29 YA 48896	48 YA 48915	47 YA 48914	66 YA 48933	65 YA 48932	84 YA 48951	83 YA 48950	102 YA 48969	101 YA 48968		
14 YA 48881	13 YA 48880	32 YA 48899	31 YA 48898	50 YA 48917	49 YA 48916	68 YA 48935	67 YA 48934	86 YA 48953	85 YA 48952	104 YA 48971	103 YA 48970		
116 YA 62040	115 YA 60041	16 YA 48883	15 YA 48882	34 YA 48901	33 YA 48900	52 YA 48919	51 YA 48918	70 YA 48937	69 YA 48936	88 YA 48955	87 YA 48954	106 YA 48973	105 YA 48972
117 YA 62041	114 YA 60040	18 YA 48885	17 YA 48884	36 YA 48903	35 YA 48902	NOON 54 YA 48921	NOON 53 YA 48920	72 YA 48939	71 YA 48938	NOON 90 YA 48957	NOON 89 YA 48956	NOON 108 YA 48975	NOON 107 YA 48974
118 YA 62042	113 YA 60039	112 YA 60038	111 YA 60037	128 YA 62052	127 YA 62051			NOON 109 YA 60035	NOON 110 YA 60036				
120 YA 62044	119 YA 62043	124 YA 62048	123 YA 62047	NOON 130 YA 62054	NOON 129 YA 62053								
NOON 122 YA 62046	NOON 121 YA 62045	NOON 126 YA 62050	NOON 125 YA 62049										



**LEGEND**

1981 GEOLOGICAL AND GEOCHEMICAL COVERAGE

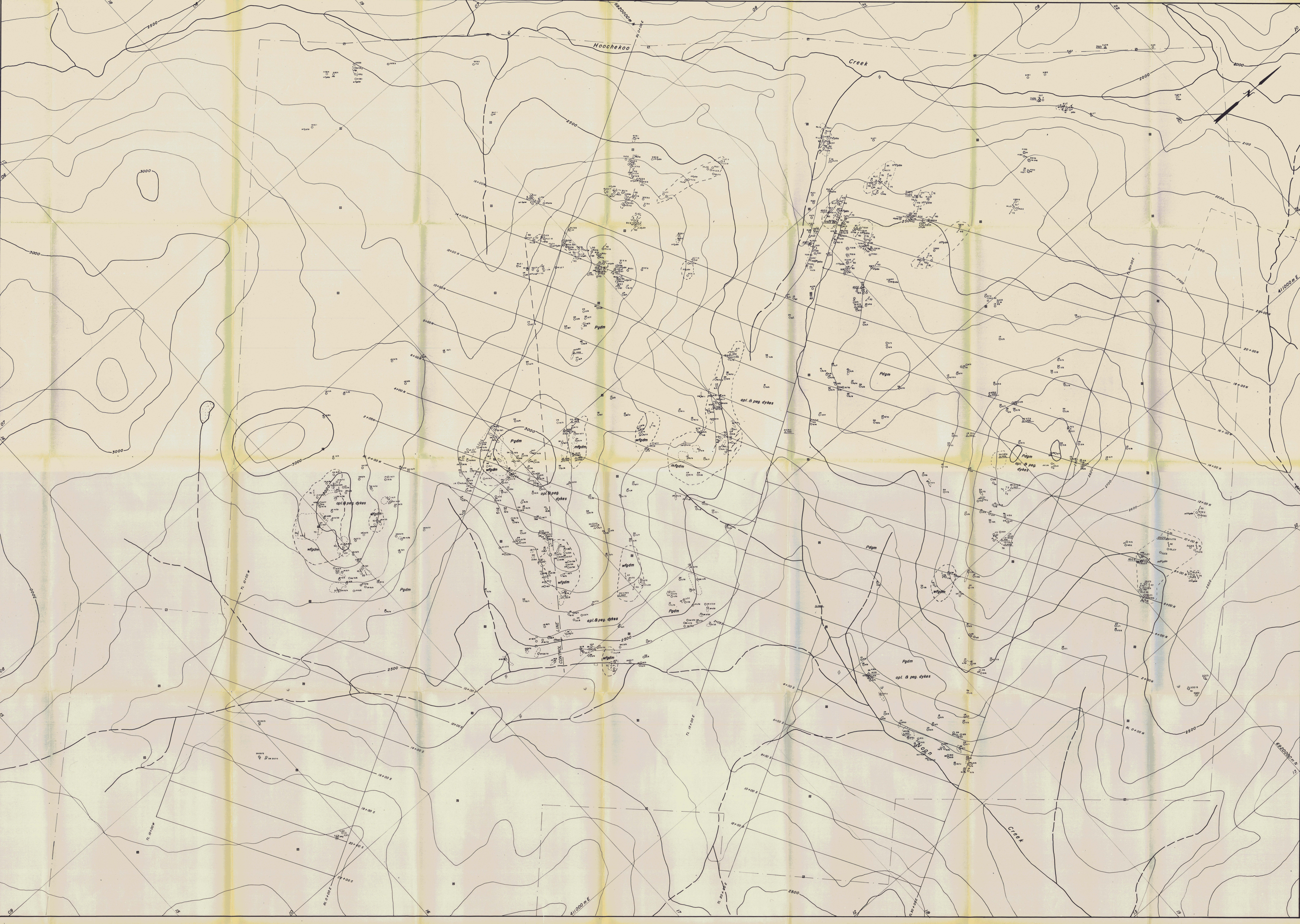
WILLIAM **CALCULATION** Expenditures \$ 61,933 for 64 Claims or \$ 967.70 per claim

UNITED KENO HILL MINES LTD.  
EXPLORATION DEPARTMENT  
WHITEHORSE - YUKON

**NOON CLAIM GROUP**

Mining District Whitehorse  
N.T.S. Sheet No. 115 I-7  
Scale 1 inch = 1/2 mile

Drawn by R.E.V. Date 12 Oct 1981



LEGEND

- Topography
- 1000m UTM Grid system from 1:50,000 Scale Map. Note: Grid North is actually 358° 30'
  - 3000 Elevations contours in Feet
  - Creeks
  - Lakes, Ponds, Sloughs

Assay Results

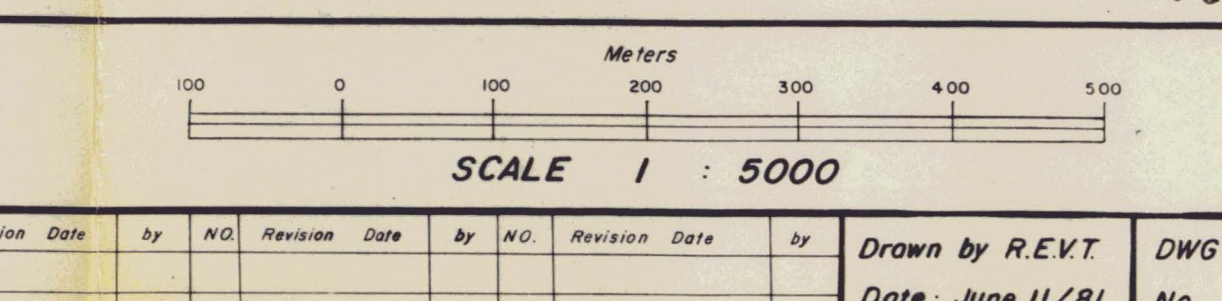
Number	Assay	Gr. wt.	Fe %	Si %	Ca %	Mg %
1378	W	0.31	0.001			
1379	W	0.33	0.001			
1380	W	0.34	0.001			
1381	W	0.36	0.001			
1382	W	0.38	0.001			
1383	W	0.40	0.001			
1384	W	0.42	0.001			
1385	W	0.44	0.001			
1386	W	0.46	0.001			
1387	W	0.48	0.001			
1388	W	0.50	0.001			
1389	W	0.52	0.001			
1390	W	0.54	0.001			
1391	W	0.56	0.001			
1392	W	0.58	0.001			
1393	W	0.60	0.001			
1394	W	0.62	0.001			
1395	W	0.64	0.001			
1396	W	0.66	0.001			
1397	W	0.68	0.001			
1398	W	0.70	0.001			
1399	W	0.72	0.001			
1400	W	0.74	0.001			
1401	W	0.76	0.001			
1402	W	0.78	0.001			
1403	W	0.80	0.001			
1404	W	0.82	0.001			
1405	W	0.84	0.001			
1406	W	0.86	0.001			
1407	W	0.88	0.001			
1408	W	0.90	0.001			
1409	W	0.92	0.001			
1410	W	0.94	0.001			
1411	W	0.96	0.001			
1412	W	0.98	0.001			
1413	W	1.00	0.001			
1414	W	1.02	0.001			
1415	W	1.04	0.001			
1416	W	1.06	0.001			
1417	W	1.08	0.001			
1418	W	1.10	0.001			
1419	W	1.12	0.001			
1420	W	1.14	0.001			
1421	W	1.16	0.001			
1422	W	1.18	0.001			
1423	W	1.20	0.001			
1424	W	1.22	0.001			
1425	W	1.24	0.001			
1426	W	1.26	0.001			
1427	W	1.28	0.001			
1428	W	1.30	0.001			
1429	W	1.32	0.001			
1430	W	1.34	0.001			
1431	W	1.36	0.001			
1432	W	1.38	0.001			
1433	W	1.40	0.001			
1434	W	1.42	0.001			
1435	W	1.44	0.001			
1436	W	1.46	0.001			
1437	W	1.48	0.001			
1438	W	1.50	0.001			
1439	W	1.52	0.001			
1440	W	1.54	0.001			
1441	W	1.56	0.001			
1442	W	1.58	0.001			
1443	W	1.60	0.001			
1444	W	1.62	0.001			
1445	W	1.64	0.001			
1446	W	1.66	0.001			
1447	W	1.68	0.001			
1448	W	1.70	0.001			
1449	W	1.72	0.001			
1450	W	1.74	0.001			
1451	W	1.76	0.001			
1452	W	1.78	0.001			
1453	W	1.80	0.001			
1454	W	1.82	0.001			
1455	W	1.84	0.001			
1456	W	1.86	0.001			
1457	W	1.88	0.001			
1458	W	1.90	0.001			
1459	W	1.92	0.001			
1460	W	1.94	0.001			
1461	W	1.96	0.001			
1462	W	1.98	0.001			
1463	W	2.00	0.001			
1464	W	2.02	0.001			
1465	W	2.04	0.001			
1466	W	2.06	0.001			
1467	W	2.08	0.001			
1468	W	2.10	0.001			
1469	W	2.12	0.001			
1470	W	2.14	0.001			
1471	W	2.16	0.001			
1472	W	2.18	0.001			
1473	W	2.20	0.001			
1474	W	2.22	0.001			
1475	W	2.24	0.001			
1476	W	2.26	0.001			
1477	W	2.28	0.001			
1478	W	2.30	0.001			
1479	W	2.32	0.001			
1480	W	2.34	0.001			
1481	W	2.36	0.001			
1482	W	2.38	0.001			
1483	W	2.40	0.001			
1484	W	2.42	0.001			
1485	W	2.44	0.001			
1486	W	2.46	0.001			
1487	W	2.48	0.001			
1488	W	2.50	0.001			
1489	W	2.52	0.001			
1490	W	2.54	0.001			
1491	W	2.56	0.001			
1492	W	2.58	0.001			
1493	W	2.60	0.001			
1494	W	2.62	0.001			
1495	W	2.64	0.001			
1496	W	2.66	0.001			
1497	W	2.68	0.001			
1498	W	2.70	0.001			
1499	W	2.72	0.001			
1500	W	2.74	0.001			

- Pgdm porphyritic, medium to coarse grained biotite - hornblende granodiorite
- wfgdm weakly foliated granodiorite
- mfgdm moderately foliated granodiorite
- apl aplite
- peg pegmatite
- T.b andesite to trachyandesite

- Geological Contact, defined, approximate, assumed
- Bedding
- Jointing
- Foliation
- Assay sample location with number, 1980, 1981
- Outcrop No. with sample, 1980
- Outcrop No. with sample, 1981
- Outcrop, Flats, Boulders
- Cut Trench
- Hand Trench
- Claim Group boundary
- Claim posts, 2, 4
- Camp site

UNITED KENO HILL MINES LTD.  
 EXPLORATION DEPARTMENT WHITEHORSE, Y.T.  
 NOON CLAIM GROUP  
 N.T.S. SHEET 115 - I - 7

GEOLOGY





**LEGEND**

- Topography
- 1000m UTM Grid system from 1:50,000 Scale Map. Note: Grid North is actually 358° 30'
  - Elevation contours in feet
  - Creeks
  - Lakes, Ponds, Sloughs
  - Claim Line (1981 Grid) Baseline 00° 33'0"
  - Sample location line (2 posts, 4 posts) 310°

AREA "C"

**GEOCHEMISTRY**

- Sample location with results 1980
- Sample location with results 1981
- Sample location NO Sample taken

**Contour Intervals**

- 50 - 99 p.p.m.
- 100 - 199 p.p.m.
- 200 + p.p.m.

**UNITED KENO HILL MINES LTD.**

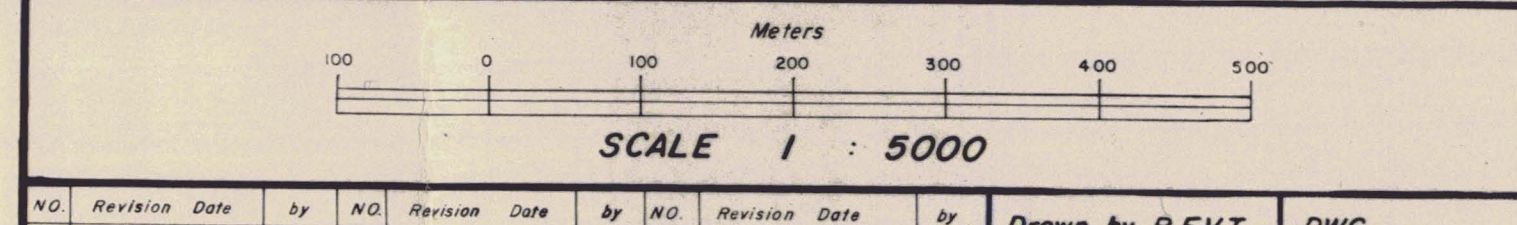
EXPLORATION DEPARTMENT WHITEHORSE, Y.T.

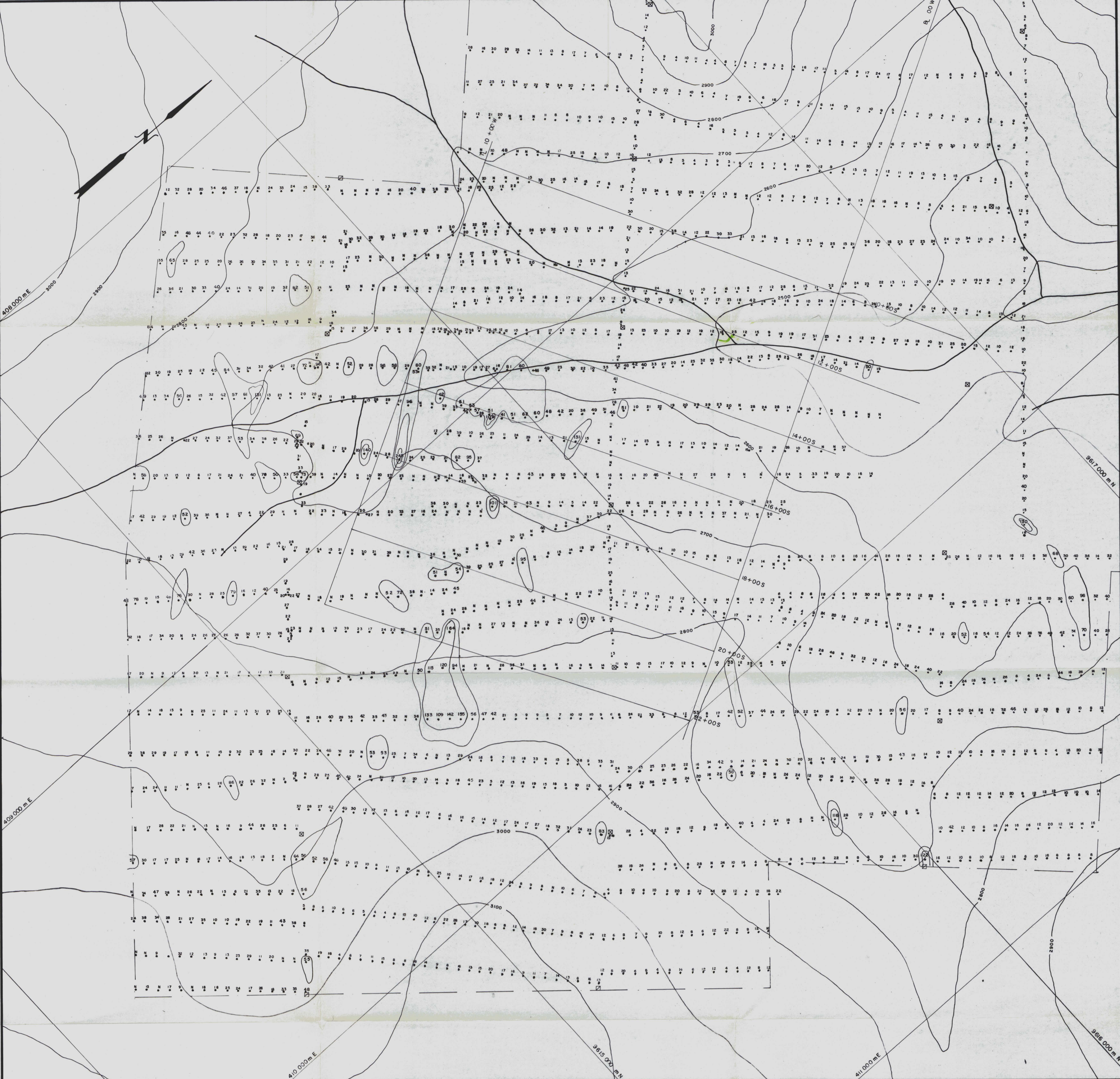
**NOON CLAIM GROUP**  
N.T.S. SHEET 115-Z-7

**GEOCHEMISTRY**

COPPER PLOT in p.p.m.

090929





**LEGEND**

**CONTOUR INTERVALS**

- 0 - 49 p.p.m.
- 50 - 99 p.p.m.
- 100 - 199 p.p.m.
- 200 - 399 p.p.m.

55 Sample Location with result

**TOPOGRAPHY**

- 1000m UTM Grid system from 1:50,000 Scale Map  
Note: Grid North is actually 358° 30'
- Elevation contours in feet
- Creeks
- Claim posts; 2,4
- Claim Group boundary

**UNITED KENO HILL MINES LTD.**

EXPLORATION DEPARTMENT WHITEHORSE, Y.T.

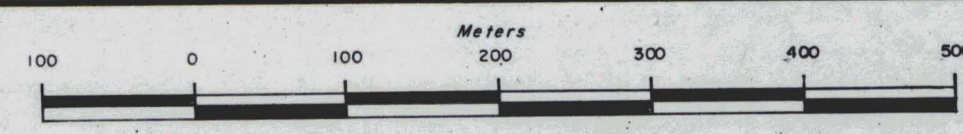
**NOON CLAIM GROUP**

Southwest  
N.T.S. SHEET 115 - I - 7

**GEOCHEMISTRY**

Copper Plot in p.p.m.

090929



SCALE 1 : 5000

NO.	Revision Date	by	NO.	Revision Date	by	NO.	Revision Date	by	Drawn by J.H.P.	DWG.
									Date: Sept. 23/81	No.