

ASSESSMENT REPORT
ON THE
EAST CREEK ZONE - RESULTS 1981 DIAMOND DRILL PROGRAM
AND THE
PROPOSED PROGRAM OF DIAMOND DRILLING
ON THE SNIPE LAKE ZONE
RIO AND EAST MINERAL CLAIM GROUPS
GRANT NOS. YA44872 - YA44895 AND F02090
WATSON LAKE AND NAHANNI MINING DISTRICTS
YUKON AND NORTHWEST TERRITORIES



N. Lat. 61°30'

W. LONG. 127°35'

for

RAMROD MINING CORPORATION
Suite 704
525 Seymour Street
Vancouver, British Columbia



by

DONALD W. TULLY, P. ENG.

95E 5, 12

090881

August 20, 1981

West Vancouver, B.C.



P. O. Box 269
Watson Lake, Yukon
Y0A 1C0

28. October, 1981

Regional Director of Resources
200 Range Road
Whitehorse, Yukon
Y1A 3V1

Your file Votre référence

Our file Notre référence



Attention: Supervising Mining Recorder

RESTRICTED

Enclosed is a Diamond Drill Report submitted by Ramrod Mining Corporation for assessment on the SUD, RIO and ROD mineral claims located on 95-E-5/12. I have requested the location of the drill core and will advise when known.

- RIO 5 - 157.01 m (E-1-81)
- RIO 5 - 153.04 m (E-2-81)
- RIO 5 - 157.62 m (E-3-81)
- RIO 5 - 152.43 m (E-4-81)
- RIO 5 - 154.57 m (E-5-81)
- RIO 5 - 151.52 m (E-6-81)
- RIO 5 - 152.74 m (E-7-81)

Total credit requested: \$29,800.00.

Yours truly,

Patti L. McLeod
Mining Recorder
Watson Lake Mining District

090881

PLM/nm
Encl.
cc: Regional Geologist

RAMROD MINING CORPORATION

704-525 SEYMOUR STREET, VANCOUVER, BRITISH COLUMBIA, CANADA V6B 3H7 PHONE (604) 688-8245

November 3, 1981

Patti McLeod
Mining Recorder,
P. O. Box 269
WATSON LAKE, Y.T.
Y0A 1C0

Dear Patti: Re: Rod Rio Sud Core

The drill core for the above claims is being stored at the
drill site.

Yours truly,

RAMROD MINING CORPORATION

Shirley Jones
Shirley Jones
Administration



TABLE OF CONTENTS

	<u>Page</u>
INTRODUCTION.....	1
SUMMARY AND CONCLUSIONS.....	1
PROPERTY - LOCATION, ACCESS, PHYSIOGRAPHY AND ENVIRONMENTAL CONSIDERATIONS.....	3
CLAIMS.....	4
HISTORY - PREVIOUS DEVELOPMENT.....	5
REFERENCES.....	7
REGIONAL AND LOCAL GEOLOGICAL SETTING.....	8
EAST CREEK ZONE - RESULTS OF THE 1981 DDH PROGRAM.....	9
SNIPE LAKE ZONE - MINERALIZATION - ASSAYS.....	10
RECOMMENDATIONS.....	11
TIME - COST DISTRIBUTION.....	12
CERTIFICATE.....	13

MAPS

Figure 1 - Location Map.....	(Frontispiece)
Figure 2 - Topographic Plan, Scale 1:250,000....	(Following page 1)
Figure 3 - Claim Map.....	(Following page 2)
Figure 4 - Regional Geology (after GSC Map 1313A.....)	(Following page 4)
Figure 5 - General Geology (Modified after a plan by Getty Mines, Limited).....	(Following page 5)
Figure 6 - Plan of D.D. Holes - EAST Creek Zone.....	(Following page 6)
Figure 7 - Section through D.D. Holes 1-81, 3-81, 5-81.....	(Following page 7)
Figure 8 - Section through D.D. Holes 1-81, 2-81, 4-81.....	(Following page 8)
Figure 9 - Section through D.D. Holes 1-81, 6-81, 7-81.....	(Following page 9)
Figure 10 - Snipe Lake Zone - Plan of Proposed Diamond Drill Holes.....	(Following page 10)

APPENDIX

Logs of Diamond Drill Holes 1-81, 2-81, 3-81, 4-81, 5-81,
6-81, 7-81

Assay Certificate #8113107

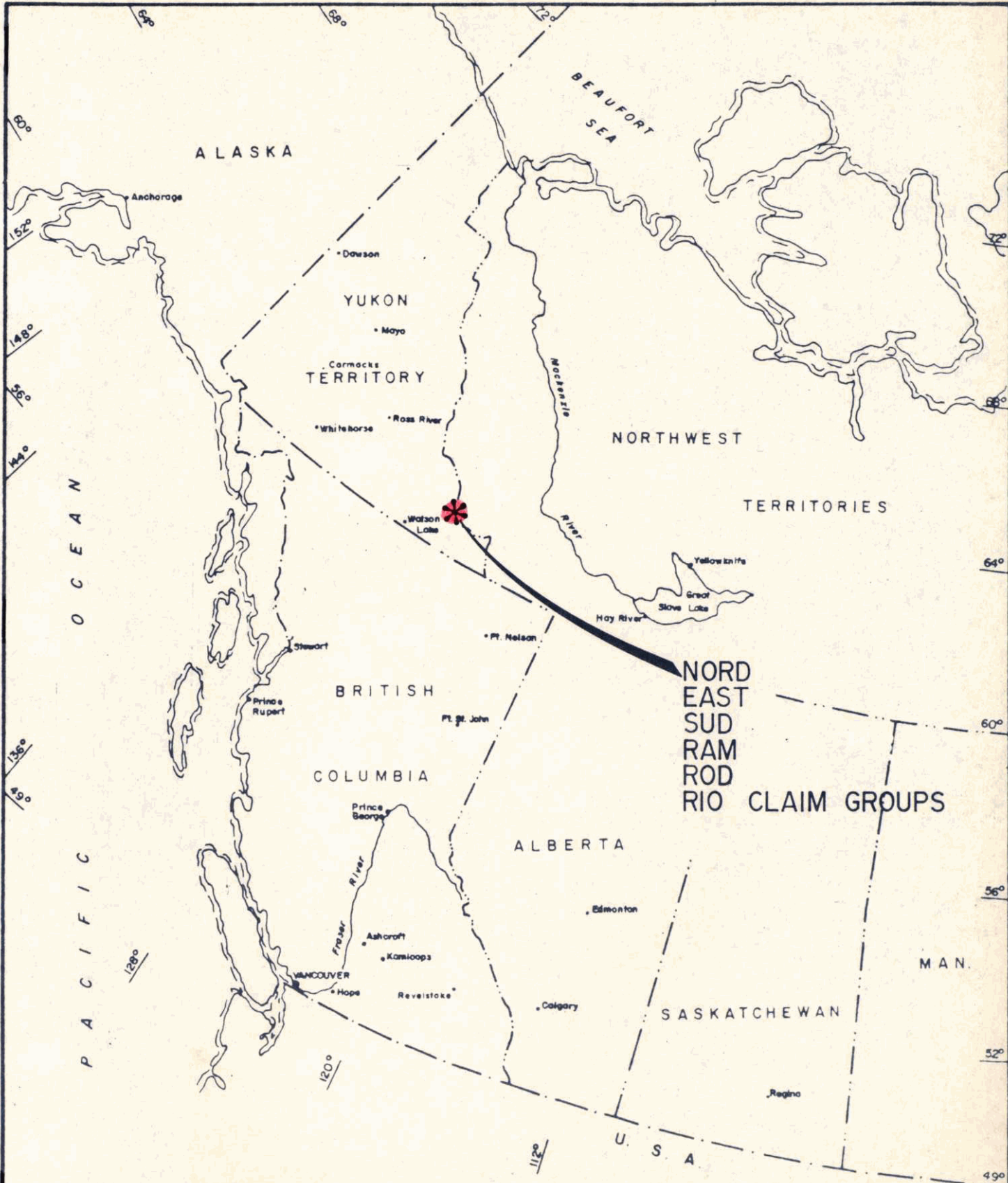


FIGURE 1
PROPERTY LOCATION MAP

AUGUST 20, 1981

Donald W. Kelly

INTRODUCTION

This report was prepared at the request of the Directors of RAMROD MINING CORPORATION, Suite 704 - 525 Seymour Street, Vancouver, British Columbia.

The purpose of this report is to summarize the results of the 1981 program of diamond drill hole exploration on the East Creek Zone located on the Rio Claim Group and evaluate the mine-making potential of the mineral zones at Snipe Lake on the East Claim Group.

This report is based upon property examinations made on July 6 and again on August 12, 1981.

A program of diamond drill exploration is recommended to test the indicated mineral potential of Snipe Lake Zone.

SUMMARY AND CONCLUSIONS

The property, comprising one hundred and twenty-eight located mineral claims and claim units, is a silver-lead-zinc prospect with a potential for developing a large tonnage of these metals. Tin, tungsten, bismuth, cadmium and gold are known to occur with the silver-lead-zinc mineralization. The ground is situated some thirty road-building miles east of the bridge over the Hyland River at mileage 76 (126 km) on the North Nahanni Range (Cantung) Road. The Canada Tungsten Mine is located about 45 miles (75 km) northwest of the property.

The lead-zinc-silver mineralization in this area was discovered by Mr. J.C. Turner in 1965 while prospecting

560000m. E.

45°

7

30'

8

9

15'

62°00'

687 0000m. N.

6

5

4

3

2

1



MOUNT
SIDNEY DOBSON

HOT
SPRINGS
VALLEY

FIGURE 2 TOPOGRAPHIC PLAN

SCALE 1-250,000
AUG. 20, 1981

RAMROD
MINING CORPORATION
CLAIM GROUP

SNIFE LAKE
ZONE

EAST CREEK
ZONE



NORTHWEST TERRITORIES
YUKON TERRITORY

Donald W. Tully

DISTRICT OF
MACKENZIE

O G A N

FLAT

Coal

RIVER

RIVER

RIVER

Rabbitkettle
River

Rabbitkettle
Hospital

Flats on the Wall
Lake

Creek

Pass

for the Norquest Syndicate. In 1968, Ramid Resources acquired a portion of the present ground and did some exploration work. Getty Mines Limited optioned the general claimed area in July-August, 1972 and did 3,457 feet of diamond drilling in eight holes with encouraging results in lead, zinc and silver. Dr. R.A. Burwash mapped the claim area for Getty Mines at that time (Figure 5).

In 1979, Ramrod Mining Corporation acquired and optioned 128 claims and claim units and did 564.3 metres (1,851 feet) of diamond drilling in five drill holes in Cirque 2 on the Nord Claims (Figure 5). The results showed many intersections of silver-lead-zinc mineralization.

A program of diamond drilling totalling 920.3 metres (3,018 feet) in four holes was also carried out on the Nord Claims in Cirque 2 in August-September 1980, again with modest values in lead-zinc and silver. One of these holes, the TOP HOLE, was designed to intersect the lead-zinc-silver "B" vein zone.

1,078.93 metres (3538.9 feet) of BQ core diamond drilling was done in seven holes on the RIO claim group testing the EAST CREEK ZONE during the period July 8 through August 9, 1981. The results of the drill holes showed the mineralization as exposed on surface did not continue to depth. Scattered weak zones of lead-zinc were found.

The results of the TOP Hole which was completed during the same period on the NORD claim group have yet to be assessed.

The Snipe Lake Showing on the East Claim group

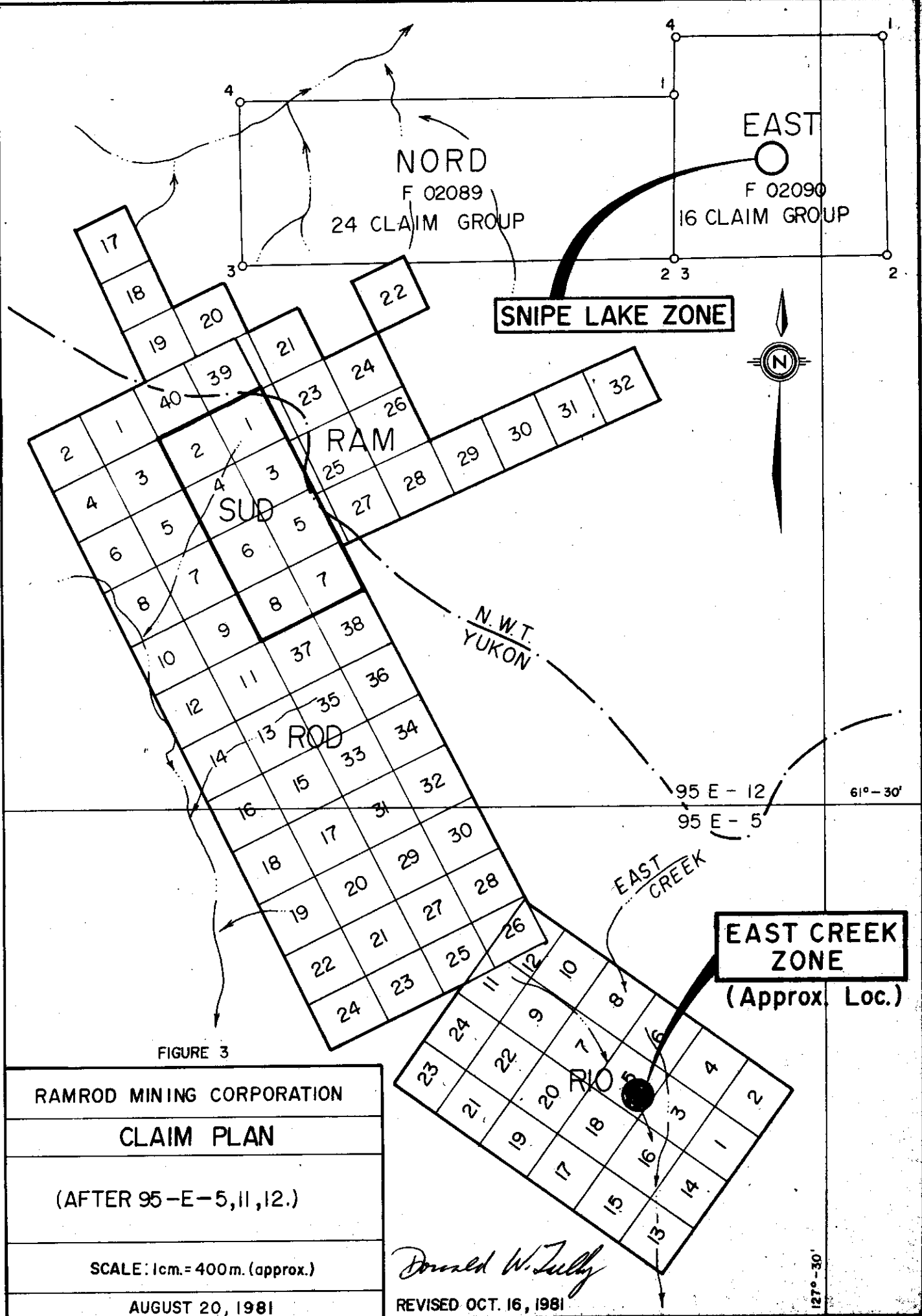


FIGURE 3

RAMROD MINING CORPORATION

CLAIM PLAN

(AFTER 95-E-5, 11, 12.)

SCALE: 1cm. = 400m. (approx.)

AUGUST 20, 1981

Donald W. July

REVISED OCT. 16, 1981

127° - 30'

has indications of an important silver content as well as lead and zinc mineralization. Silver-lead-zinc zones in the area of the Snipe Lake Showing were examined by the Mackenzie Syndicate in 1959. Later in 1967, Eagle Exploration Corporation trenched and sampled this Showing with significant results. The assay results from chip and channel sampling were reported as follows:

<u>Sample No.</u>	<u>Width</u>	<u>oz</u> <u>Gold</u>	<u>oz</u> <u>Silver</u>	<u>%</u> <u>Lead</u>	<u>%</u> <u>Zinc</u>	<u>%</u> <u>Copper</u>
46126	18 in.	Trace	7.80	14.6	28.3	.60
46127	20 ft.	Trace	4.86	11.4	4.5	.07
46128	10 ft.	.005	8.40	13.0	17.4	.15
46129	10 ft.	Trace	1.82	6.7	10.3	.09

The widespread occurrence of base and precious metal mineralization at numerous locations over the large claim group suggests that this property is an excellent exploration bet in a favourable geological environment.

A program of diamond drill exploration is recommended for the SNIPE LAKE ZONE at an estimated cost of \$297,500.

PROPERTY - LOCATION, ACCESS, PHYSIOGRAPHY
AND ENVIRONMENTAL CONSIDERATIONS

The NORD, RAM, SUD, ROD, RIO and EAST claim groups comprise 128 claim units located astride the Yukon and Northwest Territories boundary near the Headwaters of the Coal River. The property lies in the Logan Mountains. The divide which marks the boundary between the Yukon and Northwest Territories also is the watershed between the Coal River on the Yukon side and the Flat River in the Northwest Territories. The property is about 105 miles (165 km) northeast of the Town of Watson Lake. The Canada

Tungsten Mine is located about 28 miles to the northwest of the claim area. The North Nahanni Range (Cantung) Road lies about twenty miles west of the claim groups. The Hyland Air-strip on the Cantung Road is a convenient point for helicopter mobilization to and from the property.

Elevations rise on peaks to nearly 7,700 feet above sea-level in the claim area. Most of the mineral showings are below 7,000 feet. The glaciated topography is rugged and steep slopes prevail over most of the terrain and talus-covered slopes of 35 degrees are not uncommon. A glacier occupies the upper reaches of Cirque 2 on the NORD claims and remnants of smaller ice-sheets are evident elsewhere in the area.

Most of the claim area is above treeline, consequently any timber requirements for any operations must be flown to the property.

The climate is sub-arctic with a mean annual temperature of about 27^o Fahrenheit.

Water is locally available from glacial melt-water streams for diamond drilling operations during the months of June through mid-September, after which freeze-up generally occurs.

CLAIMS

One hundred and twenty-eight claims and claim units totalling approximately 6,611 acres (2,675 hectares) are situated astride the Northwest Territories - Yukon boundary area in the headwaters area of the Coal River. The Mining Districts in the Northwest Territories and the

128°00'

45'

30'

15'

62°00'



RAMROD MINING CORPORATION CLAIM GROUP

LIMESTONE

PHYLITE

QUARTZ MONZONITE TERRITORIES

FIGURE 4

REGIONAL GEOLOGY

(AFTER G.S.C. MAP 1313 A)

SCALE 1 : 250,000

AUG. 20, 1981

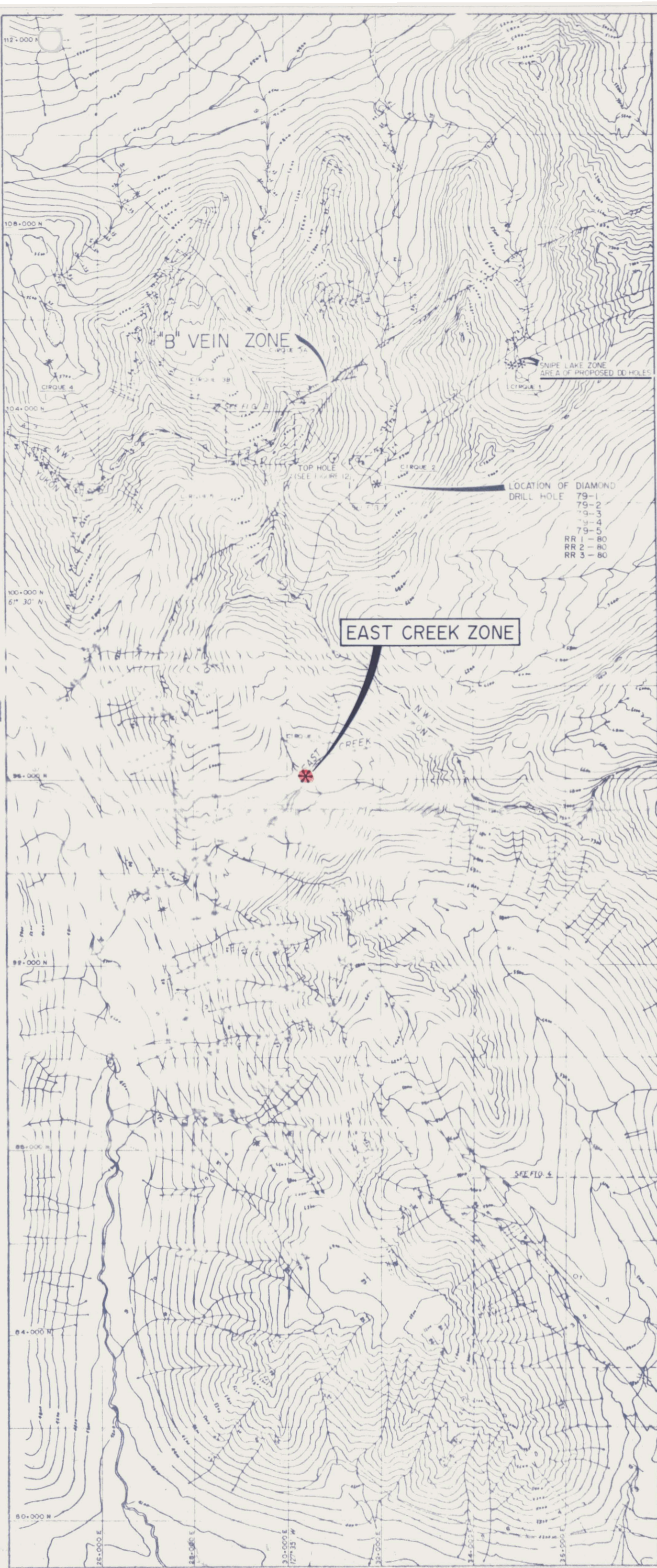
Yukon are respectively the Nahanni and Watson Lake for administrative purposes. Information on record with the Mining Recorders at Watson Lake and Yellowknife on August 19, 1981 was as follows:

<u>Claim Name</u>	<u>Grant Numbers</u>	<u>Claim Units</u>	<u>Recorded Holder</u>	<u>Expiry Date</u>	<u>Remarks</u>
NORD	F02089	24	Ramrod Mining Corp.	July 4, 1987	Northwest Territories
EAST	F02090	16	Ramrod Mining Corp.	July 6, 1988	Northwest Territories
SUD #1-8	YA33552- YA33559	8	Ramrod Mining Corp.	Oct. 4, 1981	Yukon
RAM #17-32	A49082- A49097	16	Ramrod Mining Corp.	Sept. 7, 1981	Northwest Territories
RID #1-24	YA44872- YA44895	24	Ramrod Mining Corp.	Oct. 10, 1981	Yukon
ROD #1-40	YA44896- YA44935	40	Ramrod Mining Corp.	Oct. 10, 1981	Yukon
	(excepting ROD #28 and #35)			Oct. 10, 1982	Yukon

The claims are shown on Claim Sheet areas 95-E-5, 11 and 12, as indicated on Figure 3, and are believed to be contiguous.

HISTORY - PREVIOUS DEVELOPMENT

The numerous mineral showings in the area of the Turner Batholith were discovered by Mr. J.C. Turner while prospecting for the Norquest Syndicate circa 1965. In 1968, the Ram-Rod group of 32 claims were staked and optioned to Ramid Resources Limited. At that time, A.C.A. Howe International Limited reported on the results of an exploration program and while recommending the property for further exploration suggested quote: "the Ram-Rod group must contain precious metals (i.e. silver) to be considered as having economic potential."



LEGEND

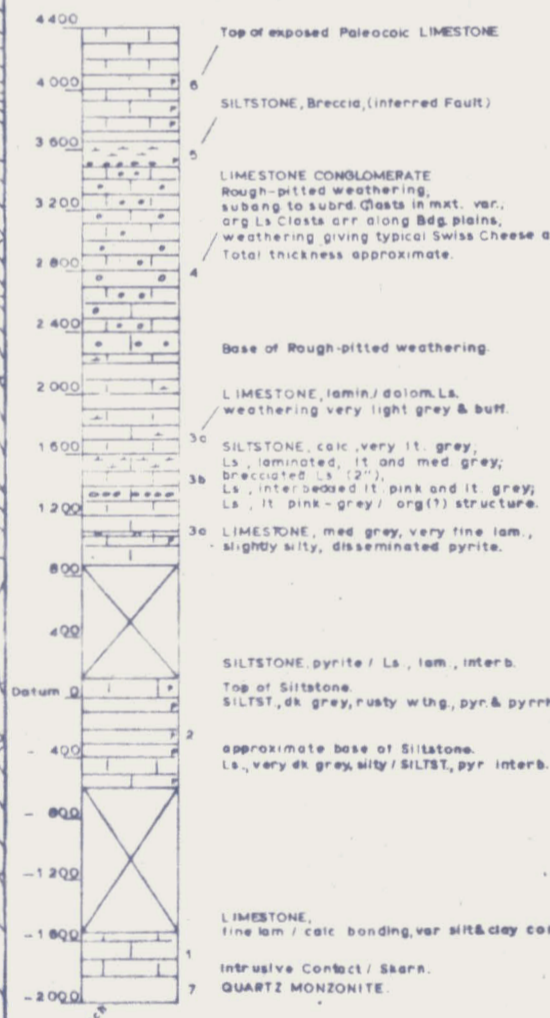
- SEDIMENTARY ROCKS**
- 9 ALLUVIUM
Glacial and alluvial deposit
- IGNEOUS ROCKS**
- DYKES
Aglite to monzonite
 - INTRUSIVE MASSES
Quartz monzonite (7)
Porphyritic granite (7a)

- Upper Carbonate**
- 6 LIMESTONE
Dark grey, argillaceous, pyritic
 - 5 SILTSTONE
Calcareous, argillaceous, pyritic
dark grey to greyish black
 - 4 LIMESTONE CONGLOMERATE
Incl. rough-pitted weathering Lst.
- Middle Carbonate**
- 3 THIN-BEDED LIMESTONE
Thinly laminated, light to med grey, some
lt grey calcareous Siltst up to 100' thick
 - 2 SILTSTONE
Pyritic, non-calcareous, dark grey
- Lower Carbonate**
- 1 LIMESTONE
Laminated, some thin argillaceous
or silty horizons

SYMBOLS

- Contact: observed, inferred, projected
- Strike and dip of beds
- Strike of vertical beds
- Faults observed
- Syncline, Anticline axis and plunge
- Fractures, joints, veins
- Trenches
- Diamond-Drill holes
- Campsite

STRATIGRAPHY



NOTE ELEVATION CONTOURS ON THIS MAP MAY BE approx. 500' LOWER THAN SHOWN

Donald W. Kelly
Revised Aug. 20, 1981

FIGURE 5
GENERAL GEOLOGY OF THE CIRQUE 2 AREA
MODIFIED AFTER A PLAN SUBMITTED BY J.C. TURNER
JANUARY 1979

Scale 1 in = 1000 ft
GETTY MINES, LIMITED
Turner Property
Watson Lake & Nohanni Mining Divisions Y.T. & N.W.T.
GEOLOGY
Feeling of JOB No 3101, FIGURE 2 (Rev. 8.1973)
Scale 1 in = 1000 ft Date Feb. 3, 1978

In 1972, Getty Mining Pacific, Limited and General Crude Oil Company joint-ventured an exploration program on the general area of the Turner Batholith including Ram, Rod and Tam claims. Getty Mines, Limited, Vancouver, British Columbia was the operator. Getty did a program of geological mapping, trenching and diamond drilling. Eight diamond drill holes totalling 3,457 feet of drilling was done in the period July 3 - August 2, 1972. D.D. Hole No. 8 intersected mineralization southwest of Cirque 2 in an attempt to explore beneath a glacial pile of ice and rock strewn debris. This hole reportedly found a combined lead-zinc intercept of 9% and some 5 ounces of silver. Assay results were not available for the remainder of the drilling.

Ramrod Mining Corporation acquired an option on the ground in 1979 and commenced a program of diamond drill exploration on the NORD claims. This 1979 program completed 1,851 feet (564.3 metres). The 1980 program of diamond drilling completed 920.3 metres (3,018 feet) in four holes. Total drilling in nine diamond drill holes during the 1979-1980 programs amounted to 1,484.5 metres (4,869 feet).

In the period July 8 through August 9, 1981, a total of 1,078.93 metres (3,538.8 feet) of diamond drilling was done in seven holes on the EAST Creek Zone on the RIO claim group. The results of the EAST Creek drilling are discussed in this report.

Some 400 feet was also drilled on the TOP Hole in the Cirque 2 area of the NORD claim group during the same period but the core from this hole remains to be logged at the time of writing.

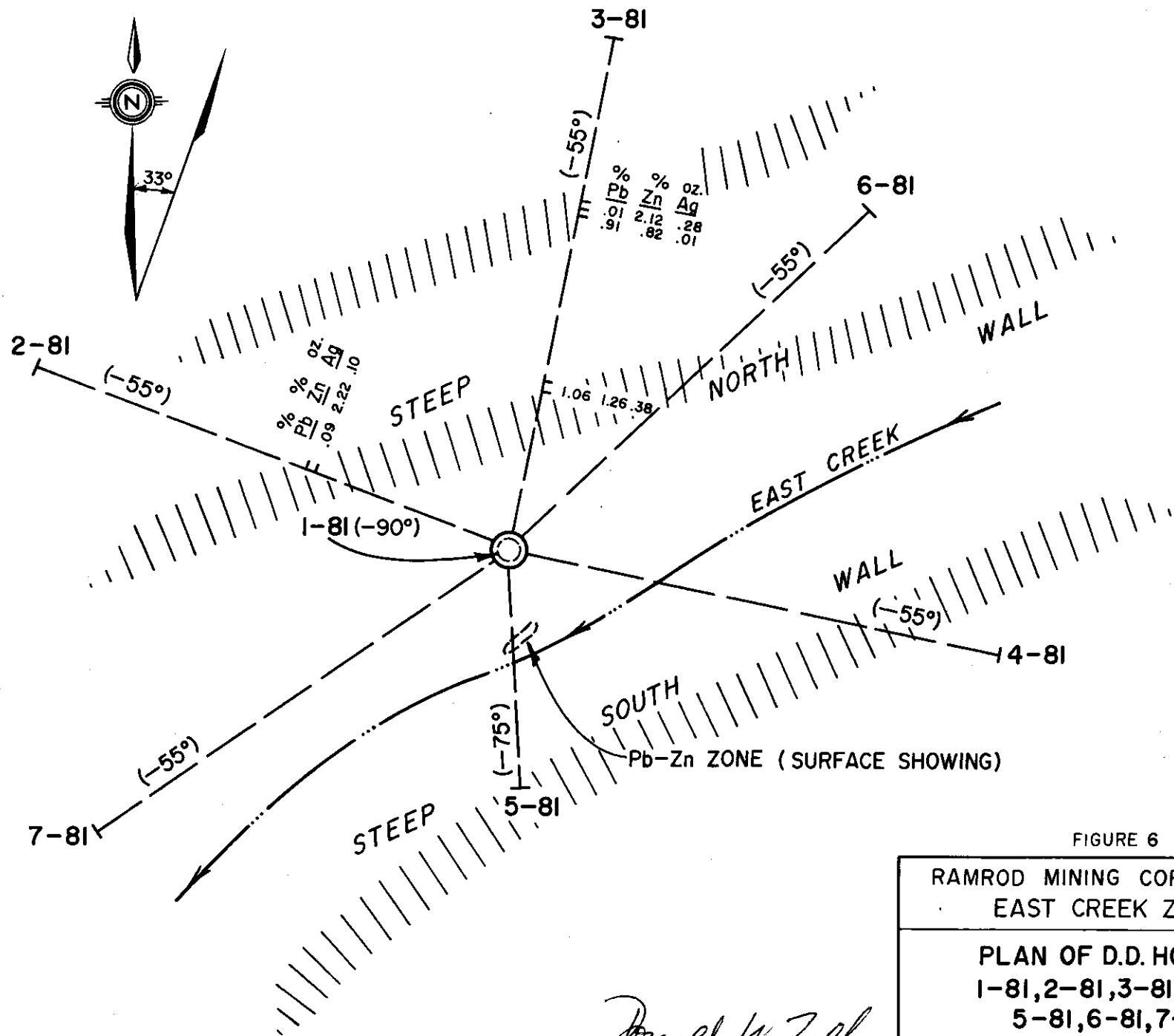


FIGURE 6

RAMROD MINING CORPORATION
EAST CREEK ZONE

PLAN OF D.D. HOLES
1-81, 2-81, 3-81, 4-81,
5-81, 6-81, 7-81

SCALE: 1:1000

AUGUST 20, 1981

Donald W. Tully

REFERENCES

Publications pertinent to the claim groups and available to the writer are as follows:

- Geological Survey of Canada Paper 67-2 - Geology and Tungsten Deposits near the headwaters of the Flat River by S.L. Blusson, 1968
- Geological Survey of Canada Paper 64-52 - Flat River Glacier Lake and Wrigley Lake by H. Gabrielse, J.A. Roddick and S.L. Blusson, 1965
- Geological Survey of Canada Memoir 366 and Map 1313A by Gabrielse, Roddick and Blusson
- Report on the RAM-ROD Property for Ramid Resources Limited by A.C.A. Howe International Limited (Report No. 154 by James E. Tilsley, P.Eng., dated October 22, 1968
- Exploration Summary Getty-Pacific-General Crude Joint Venture, Yukon-Northwest Territories, Canada by George B. Griswold and D.R. Stelck for Getty Mines, Limited, Vancouver, B.C., dated December, 1972
- Geology of the Turner Property - an undated report by Dr. R.A. Burwash submitted by Mr. J.C. Turner
- Report on a Program of Diamond Drilling for Ramrod Mining Corporation dated December 27, 1979 by Donald W. Tully, P. Eng.
- Report on the 1979-1980 Program of Diamond Drilling on the NORD Mineral Claim Group dated December 9, 1980 by Donald W. Tully, P. Eng.
- Progress Report on the Program of Diamond Drilling on the NORD Mineral Claim (24 units) for Ramrod Mining Corporation and dated April 9, 1981 by Donald W. Tully, P. Eng.
- Yukon and Northwest Territories Mineral Claim Sheets 95-E-5, 11 and 12, scale 2 inches = 1 mile
- N.T.S. Topographic Map 95E - Flat River, scale 1:250,000

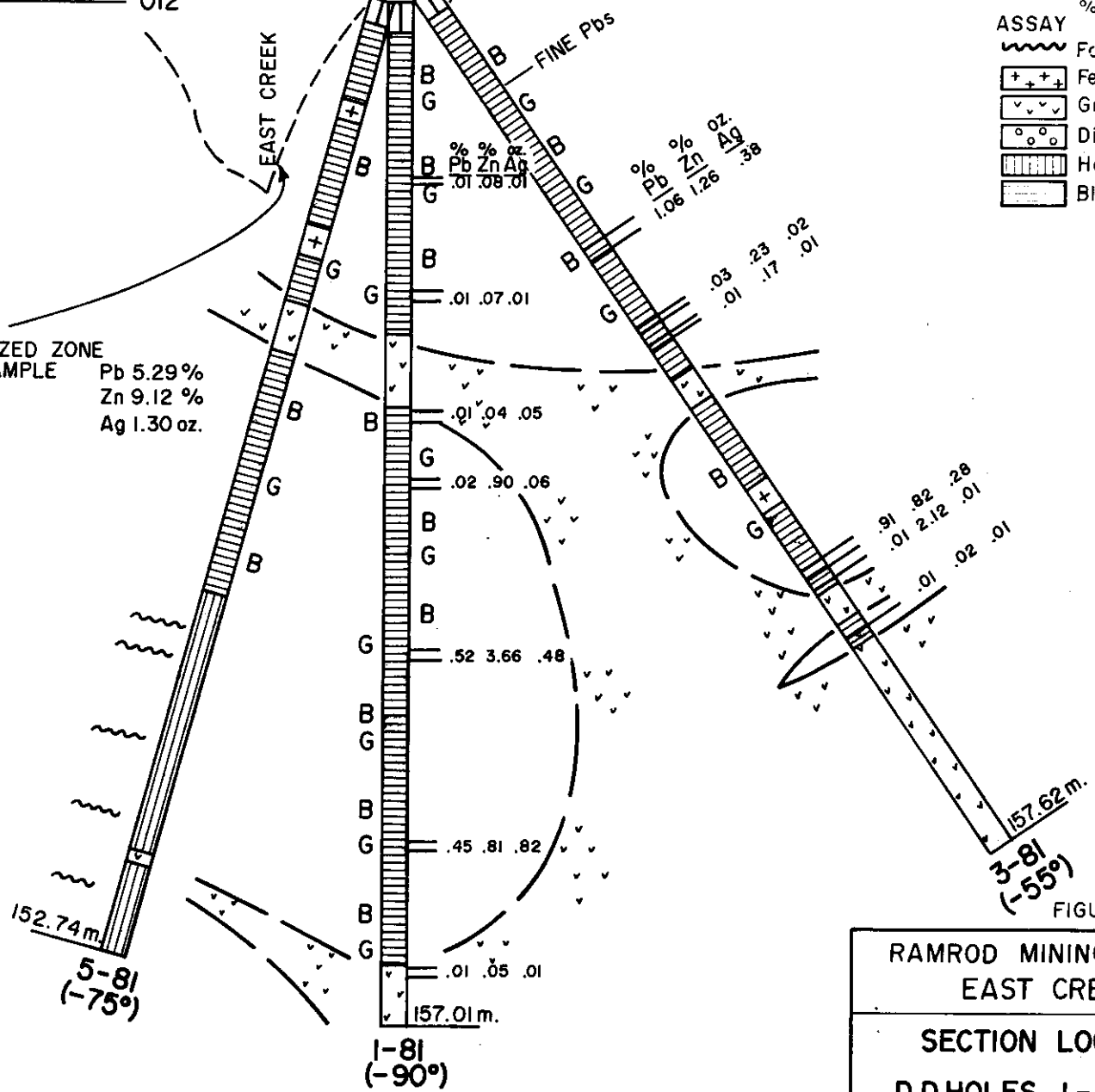
LEGEND

ASSAY	%Pb	%Zn	oz Ag
	Fault zone		
	Feldspar porphyry		
	Granite		
	Diorite		
	Hornfels		
			brown (B)
			grey (G)
	Black shale		

EI. 4950'
4900'
4800'
4700'
4600'
4500'

← 012°

SURFACE MINERALIZED ZONE
GRAB SAMPLE
Pb 5.29%
Zn 9.12%
Ag 1.30 oz.



Donald W. Kelly

RAMROD MINING CORPORATION
EAST CREEK ZONE

SECTION LOOKING WEST
D.D.HOLES 1-81, 3-81, 5-81

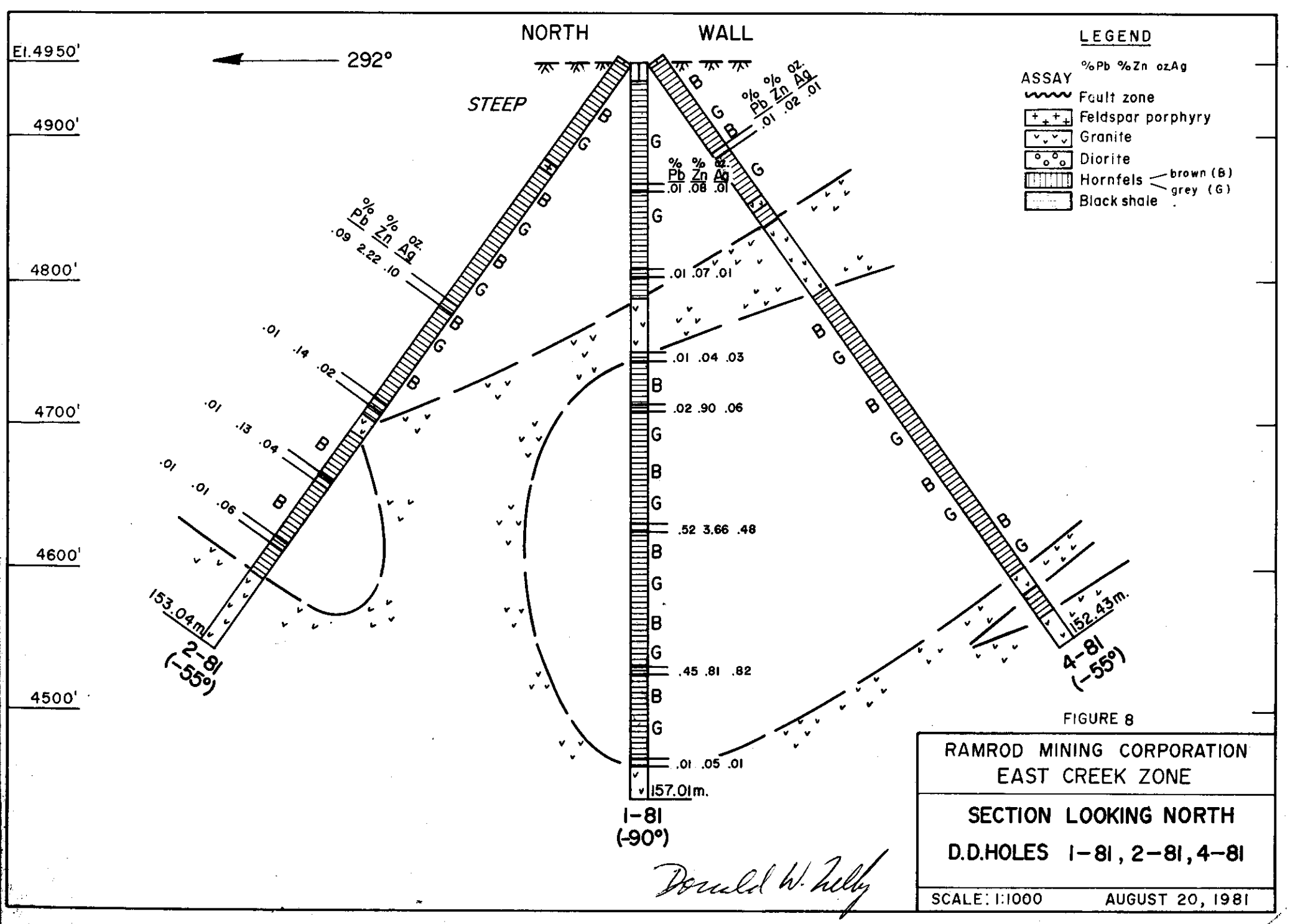
SCALE: 1:1000 AUGUST 20, 1981

FIGURE 7

REGIONAL AND LOCAL GEOLOGICAL SETTING

Five main lithological units underlie the claim groups. These are the early "Phyllite Unit", calcareous sediments of the Sekwi Formation, limestones of the Rabbit-Kettle Formation, black shales of the Road River Group and Mesozoic intrusives ranging from quartz monzonite through diorite with secondary interaction phases of feldspar porphyry and lamprophyre dykes. The rock groups range in age from Cambrian to probably late Cretaceous in age. A tentative table of geologic formational events is as follows:

<u>Formation</u>	<u>Description/Event</u>	<u>Age</u>
Sand, gravel and glacial debris	Unconsolidated	Quaternary
	(Erosional unconformity)	
Silver, lead-zinc, with minor gold, tin, cadmium, bismuth and associated siliceous veining	Pyrite, sphalerite, galena, pyrrhotite and related sulphides. Period of mineralization preceded by development of skarn and hornfels with fracturing and faulting	Tertiary (?)
Feldspar porphyry and lamprophyre dykes, quartz monzonite, granite, granodiorite	Turner batholith intrusive activity accompanying tectonic activity	Cretaceous (?)
	(Erosional unconformity)	
Limestones and black shales	Road River Formation	Mid-Paleozoic
Calcareous sediments and siltstones	Rabbitkettle Formation	Late Cambrian (?)
Limestone, siltstone, quartzite and associated volcanics	Sekwi Formation	Mid-Cambrian (?)



The regional geology is shown on Figure 5. Dr. R.A. Burwash mapped the general area of the property for Getty Mines in 1972 and his work is shown on Figure 5.

The regional strike of 330 degrees is generally preserved away from the contact areas of the Turner Batholith. The general dip of the formations is steeply west. Strikes and dips tend to follow the contact aureole zones which more or less conforms to the configuration of the intrusive contact area.

EAST CREEK ZONE
RESULTS OF THE 1981 DIAMOND DRILL HOLE PROGRAM

Seven diamond drill holes of BQ core size were drilled on this zone in the period July 8 - August 9, 1981 as shown on Figures 6, 7, 8 and 9. The results were as follows:

<u>DDH No.</u>	<u>Direction</u>	<u>Dip</u>	<u>Hole Depth</u>	<u>Width</u>	<u>Results</u>				
					<u>Ozs Au</u>	<u>Ozs Ag</u>	<u>% Pb</u>	<u>% Zn</u>	<u>% WO₃</u>
E-1-81	000°	90°	157.01 @ 99.3m	1.3 m	>.003	0.48	0.52	3.66	0.04
E-2-81	292°	55°	153.04 @ 64.6m	1.5 m	>0.003	0.10	2.22	0.09	0.02
E-3-81	012°	55°	157.62 @ 46.6m @ 08.8m	1.8 m 1.8 m	>0.003 0.003	0.38 0.01	1.06 0.01	1.26 2.12	0.01 0.01
E-4-81	102°	55°	152.43)						
E-5-81	177°	75°	154.57)						
E-6-81	047°	55°	151.52)						
E-7-81	237°	55°	152.74)						

1,078.93 (3,538.8 feet)

El. 4950'
 4900'
 4800'
 4700'
 4600'
 4500'

← 237°

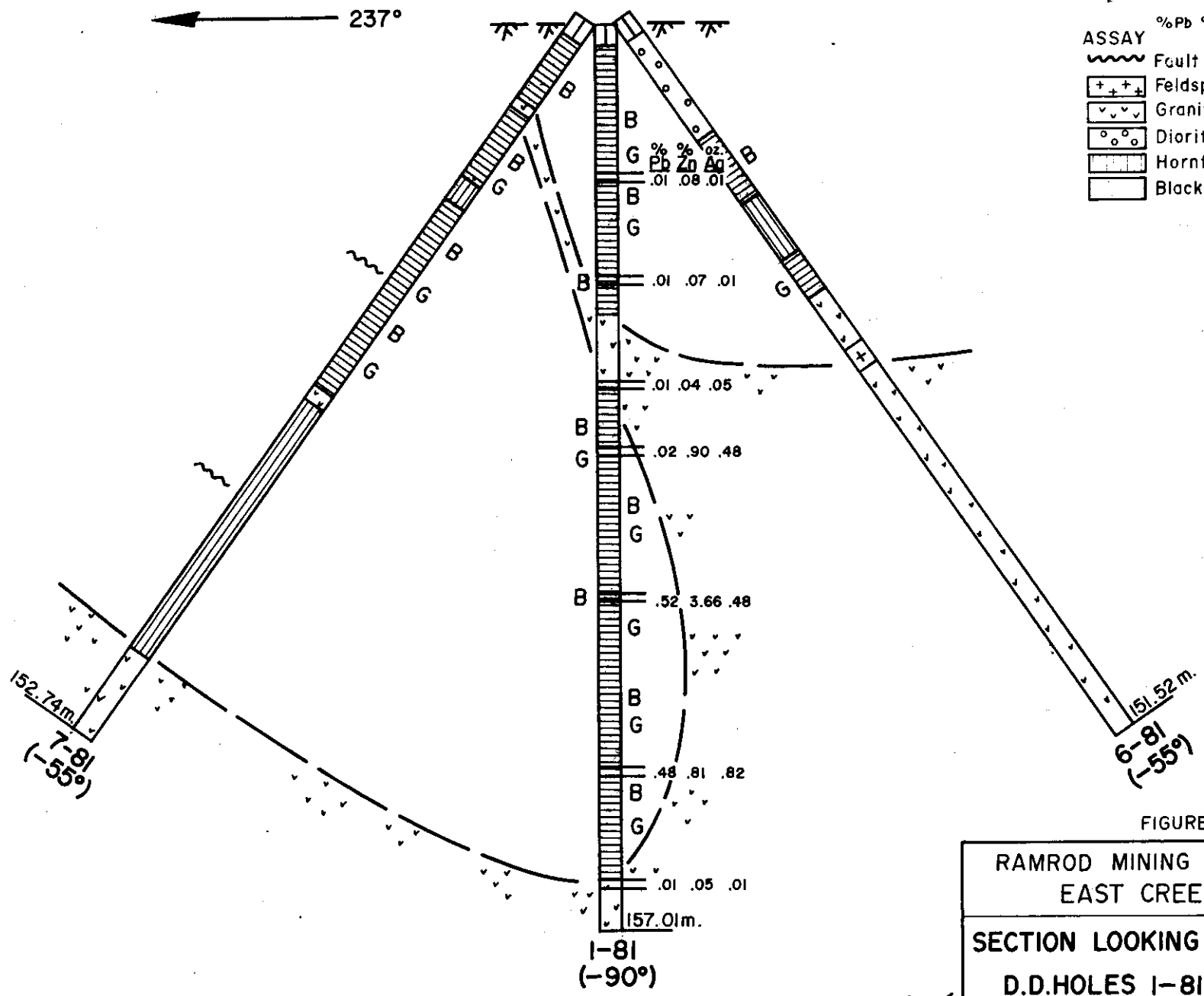


FIGURE 9

RAMROD MINING CORPORATION
 EAST CREEK ZONE
 SECTION LOOKING NORTHWEST
 D.D.HOLES 1-81, 6-81, 7-81
 SCALE: 1:1000 AUGUST 20, 1981

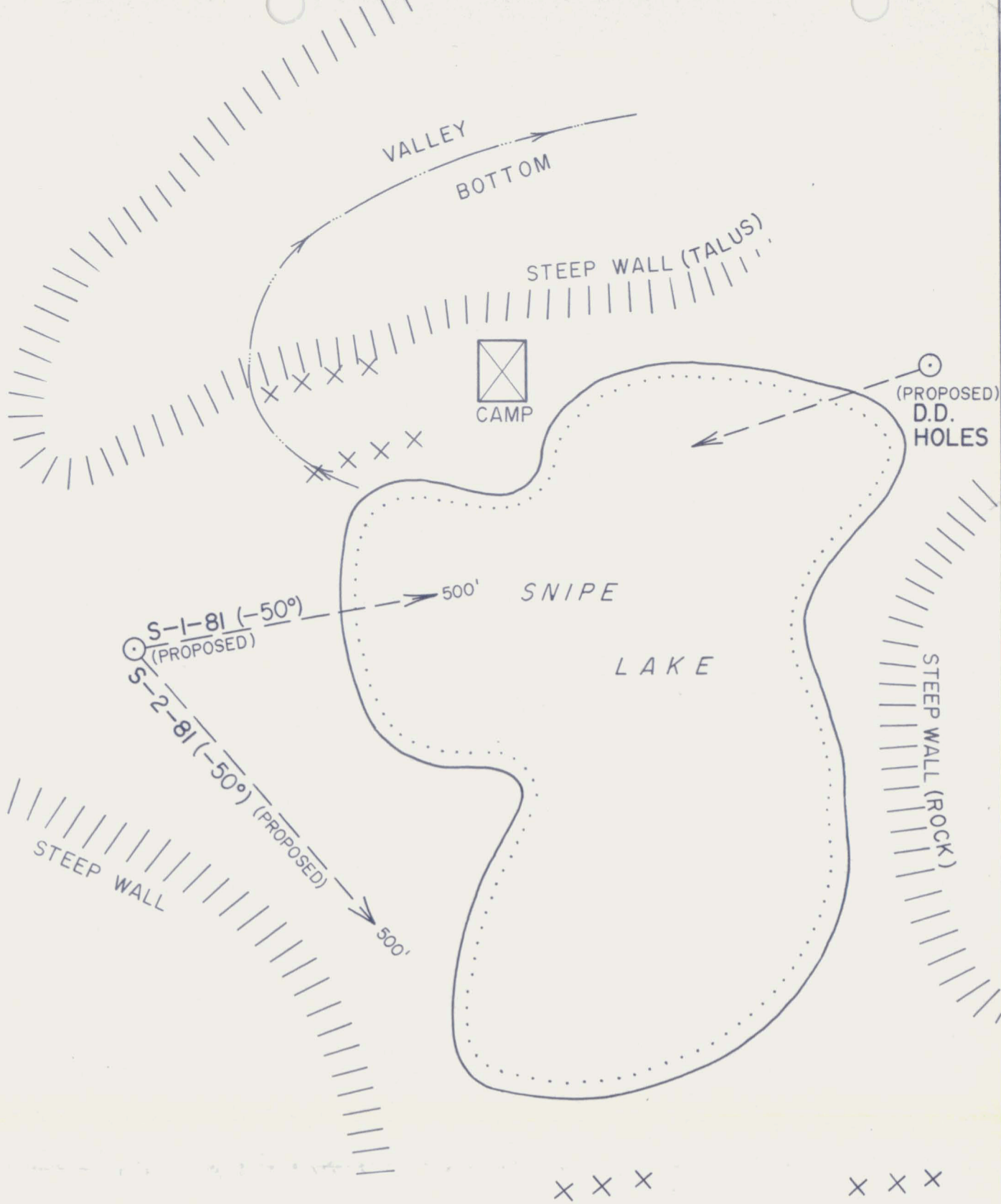
Donald W. Kelly

SNIPE LAKE ZONE - MINERALIZATION - ASSAYS

Galena and sphalerite (the iron-rich variety called mar-
matite) are the main minerals in the lense-like zones of mineral-
ization that mark the mineralized trend through the area on both
the east and west boundary areas of Snipe Lake. The lead-zinc
mineralization follows the trend of the schistose host rocks and
occurs as lenses varying from a few centimetres to several metres
in width. Assays taken by Eagle Exploration Corporation in 1967
when exploring the former Lucky Lake property for Cyprus Mines
Corporation showed the following results:

LUCKY LAKE SAMPLES 1967

<u>Sample No.</u>	<u>Location & Remarks</u>	<u>Width</u>	<u>Au oz/t</u>	<u>Ag oz/t</u>	<u>Pb %</u>	<u>Zn %</u>	<u>Cu %</u>	<u>Type</u>	<u>Sampled by</u>
46126	Snipe Lake. Hill showing high grade	18"	Tr	7.80	14.6	28.5	.60	Channel	D.G. Leighton
46127	Trench west end of Hill showing	20'	Tr	4.86	11.4	4.5	.07	Chip	D.G. Leighton
46128	Central trench above Snipe Lake	10'	.005	8.40	13.0	17.4	.15	Chip	D.G. Leighton
46129	East trench Snipe Lake Hill	10'	Tr	1.82	6.7	10.3	.09	Chip	D.G. Leighton
46130	Grab at Snipe Lake	4½'			1.3	8.4		Grab	D.G. Leighton
46131	Snipe Lake Trench in skarn	50'	Tr	.26	.2	4.6	Tr	Chip	R.B. Stokes
46132	Snipe Lake Trench	15'	Tr	.40	.2	3.3	Tr	Chip	R.B. Stokes
46133	Snipe Lake over- looking cliff	40'	Tr	1.76	.2	7.3	Tr	Chip	R.B. Stokes
46134	Snipe Lake. Blasted trench	6'	Tr	.62	Tr	2.8	Tr	Chip	
46135	Snipe Lake. Blasted trench	18'	Tr	.34	Tr	3.1	Tr	Chip	
7185	Snipe Lake 100x30 ft. leached skarn, surface chips		0.005	Tr	0.18	3.33	-	Chip	R.B. Stokes



LEGEND

X X X FORMER TRENCHINGS AND GOSSAN SHOWINGS - GALENA - SPHALERITE

NOTE: ALL DISTANCES SHOWN ARE APPROXIMATE

FIGURE 10

SNIPE LAKE ZONE
NAHANNI MINING DISTRICT
NORTHWEST TERRITORIES

PROPOSED D.D. HOLES

SCALE 1:1500

AUG. 20, 1981

Donald W. Kelly

RECOMMENDATIONS

A program of diamond drilling is proposed to test the lead, zinc, silver zones on the Snipe Lake Zone with seven BQ core size holes each 150 metres (492 feet) in length.

Respectfully submitted,



August 20, 1981

Donald W. Tully, P. Eng.

CERTIFICATE

I, DONALD WILLIAM TULLY, of the City of West Vancouver, Province of British Columbia, hereby certify as follows:

- 1) I am a Consulting Geologist with an office at Suite 102, 2222 Bellevue Avenue, West Vancouver, B.C.
- 2) I am a registered Professional Engineer of the Provinces of British Columbia and Ontario.
- 3) I graduated with a degree of Bachelor of Science, Honours Geology, from McGill University in 1943.
- 4) I have practiced my profession for thirty-six years.
- 5) I have no direct, indirect or contingent interest in the NORD, EAST, SUD, RAM, ROD and RIO mineral claims, subject of this report, nor the securities of Ramrod Mining Corporation, nor do I intend to have any interest.
- 6) This report dated August 20, 1981, is based on personal field examinations I made on July 6 and August 12, 1981 on the subject claims and from information gathered from available maps and reports.
- 7) Written permission from the author is required to publish this report dated August 20, 1981 in any Prospectus or Statement of Material Facts.

DATED at West Vancouver, Province of British Columbia, this 2nd day of September, 1981.



Donald W. Tully, P. Eng.,
Consulting Geologist

APPENDIX

**DON TULLY ENGINEERING LTD.
SUITE 102 - 2222 BELLEVUE AVENUE
WEST VANCOUVER, BRITISH COLUMBIA
V7V 1C7**

HOLE No. E-1-81

COMPANY RAMROD MINING CORPORATION
DIAMOND DRILL CORE LOG - SAMPLE RECORD

HOLE DEPTH 157.01 m
 CORE SIZE 36 mm
 HOLE DIRECTION 000
 DIP 90 °

CLAIM RIO #5

Loc'n EAST CREEK ZONE

collar ELEV. 5,050 ft PAGE No. 1 of 2

LENGTH IN METRES		DESCRIPTION	MINERALIZATION	SAMPLE No.	ASSAYS					Pb %	WO ₃ %
FROM	TO				From	To	Length Metres	AU OZS	AG OZS		
0.0	4.2	Casing									
	5.7	Hornfels with black shale bands @ 45°	c/a								
	11.8	Hornfels with grey silicification and	garnets								
	14.3	Hornfels as above with fault zone									
	26.2	Hornfels grey phase with garnets and	cherty fragments								
	27.1	Hornfels brown phase with + 20% diss.	py.	912R			>0.003	.01	.08	.01	.03
	32.3	Hornfels brown phase									
	34.1	Hornfels grey phase									
	43.9	Hornfels brown phase									
	45.4	Hornfels brown phase, brecciated with	quartz veinlets								
		and disseminated pyrite		911R			.003	.01	.07	.01	.07
	50.3	Hornfels brown phase with bands black shale									
	55.7	Granodiorite with inclusions grey hornfels									
	57.0	Hornfels, grey phase									
	62.5	Granodiorite									
	64.3	Hornfels, brown phase with + 10% disseminated pyrite		910R			.003	.05	.04	.01	.02
	73.4	Hornfels, as above with disseminated pyrite									
	74.0	Hornfels, grey phase with + 10% disseminated pyrite		909R			.003	.06	.90		
	99.3	Hornfels, brown phase with fine seams and diss. pyrite								.02	.01

LEGEND

C/A - CORE AXIS

Bx - BRECCIATED

NA - NOT ASSAYED

Diss. - DISSEMINATED

f.g. - fine-grained

m.g. - med. grained

NOTE: Core stored at collar of Hole

py - PYRITE

Mg - MAGNETITE

Pb - GALENA

Zn - SPHALERITE

Po - PYRRHOTITE

CORE Logged by: D.W. Tully, P. Eng.

CORE Split by: M. Andersen

HOLE STARTED: July 8, 1981

HOLE FINISHED: July 13, 1981

HOLE No. E-2-81

COMPANY RAMROD MINING CORPORATION

HOLE DEPTH 153.04 m

CLAIM RID #5

CORE SIZE 36 mm

Loc'n EAST CREEK ZONE
PROPERTY**DIAMOND DRILL CORE LOG - SAMPLE RECORD**

HOLE DIRECTION 292°

DIP 55°

collar ELEV 5,050 ft. PAGE No. 1 of 2

LENGTH IN METRES		DESCRIPTION	MINERALIZATION	SAMPLE No.	ASSAYS						Pb %	WO ₃ %
FROM	TO				From	To	Length Metres	AU OZS	AG OZS	Fe %		
0.0	0.6	Casing										
	19.2	Hornfels with 50% grey and brown phases each										
	27.1	Hornfels, brown phase with 10% grey phase										
	29.2	Feldspar porphyry dyke										
	39.3	Hornfels, grey phase										
	41.4	Hornfels, brown phase										
	44.2	Hornfels, grey phase										
	48.1	Hornfels, brown phase										
	50.6	Hornfels, grey phase										
	60.6	Hornfels, brown phase										
	62.2	Hornfels, brecciated, brown phase with dissem. pyrite										
	64.6	Hornfels, brown phase										
	66.1	Hornfels, grey phase with fine dissem. zn and pyrite	905R			1.5	0.003	0.10	2.23		0.09	0.02
	71.6	Hornfels, with black shale bands										
	73.4	Feldspar porphyry dyke										
	90.8	Hornfels, brown and grey phases with garnetiferous zones										
	91.7	Hornfels, grey phase, brecc. fine zn, diss. pyrite	904R				.003	0.02	0.14		0.01	0.04
	94.2	Black shale										
	95.1	Granodiorite										

LEGEND

C/A - CORE AXIS
 Bx - BRECCIATED
 NA - NOT ASSAYED
 Diss. - DISSEMINATED
 f.g. - fine-grained
 m.g. - med. grained

NOTE: Core stored at collar of hole

py - PYRITE
 Mg - MAGNETITE
 Pb - GALENA
 Zn - SPHALERITE
 Po - PYRRHOTITE

CORE Logged by: D.W. Tully, P. Eng.
 CORE Split by: M. Andersen
 HOLE STARTED: July 14, 1981
 HOLE FINISHED: July 18, 1981

HOLE No. E-2-81

CLAIM RIO #5

Loc'n EAST CREEK ZONE
PROPERTY

COMPANY

RAMROD MINING CORPORATION

DIAMOND DRILL CORE LOG - SAMPLE RECORD

HOLE DEPTH 153.04 m

CORE SIZE 36 mm

HOLE DIRECTION 292°

DIP 55 °

collar ELEV. 5,050 ft. PAGE No. 2 of 2

LENGTH IN METRES		DESCRIPTION	MINERALIZATION	SAMPLE No.	ASSAYS					Pb %	WO ₃ %
FROM	TO				From	To	Length METRES	AU OZS	AG OZS		
95.1	97.8	Black shale									
	98.4	Granodiorite									
	104.2	Black shale									
	104.8	Hornfels, grey phase (may be intrusive ?)									
	110.6	Black shale									
	111.2	Hornfels, grey phase with dissem. fine zn, pyrite		903R			0.003	0.04	0.13		0.01 0.04
	114.6	Hornfels, brown phase with quartz veinlets, dissem. py.									
	115.8	Fault zone									
	131.1	Black shale with hornfels bands, garnet zones, diss. py.									
	133.5	Hornfels, grey phase (may be intrusive ?)									
	135.0	Zone of diss. pyrite		902R			0.003	0.06	0.01		0.01 0.02
	142.9	Granodiorite									
	143.6	Fault zone									
	153.04	Granodiorite									
		END OF HOLE									

LEGEND

C/A - CORE AXIS

Bx - BRECCIATED

NA - NOT ASSAYED

Diss. - DISSEMINATED

f.g. - fine-grained

m.g. - med. grained

py - PYRITE

Mg - MAGNETITE

Pb - GALENA

Zn - SPHALERITE

Po - PYRRHOTITE

NOTE: Core stored at collar of hole

CORE Logged by: D.W. Tully, P. Eng.

CORE Split by: M. Andersen

HOLE STARTED: July 14, 1981

HOLE FINISHED: July 18, 1981

HOLE No. E-3-81

CLAIM RIO #5

Loc'n EAST CREEK ZONE
PROPERTY

COMPANY RAMROD MINING CORPORATION
DIAMOND DRILL CORE LOG - SAMPLE RECORD

HOLE DEPTH 157.62 m
CORE SIZE 36 mm
HOLE DIRECTION 012°
DIP 55°

collar ELEV. 5050 ft, PAGE No. 1 of 2

LENGTH IN METRES		DESCRIPTION	MINERALIZATION	SAMPLE No.	ASSAY						Pb %	WO ₃ %
FROM	TO				From	To	Length metres	AU OZS	AG OZS	SN %		
0.0	3.9	Casing										
	13.1	Hornfels, grey phase with dark inclusions, may be intrusive										
	28.0	Hornfels, grey phase (sparse fine pbs at 18.6)										
	33.5	Hornfels, brown phase, fine seams, py + dissem. pyrite										
	34.1	Hornfels, brown phase, with 25% grey phase										
	46.6	Hornfels, grey phase										
	48.4	Hornfels, grey phase, quartz veinlets, fine zn, Pb, py.		918R			1.8	0.003	0.38	1.26		1.06 0.01
	56.4	Hornfels, grey phase										
	61.8	Hornfels, brown phase										0.03 0.03
	62.3	Hornfels, grey phase, fine pbs. dissem. py.		917R			0.003	0.02	0.23			
	64.6	Hornfels, brown phase										
	65.2	Hornfels, grey phase, fine pbs. dissem. py.		916R			0.003	0.01	0.17			0.01 0.04
	66.7	Hornfels, grey phase										
	70.6	Hornfels, brown phase										
	75.6	Granodiorite										
	84.4	Hornfels, brown phase										
	88.4	Hornfels, grey phase										
	90.8	Hornfels, brown phase										
	96.0	Hornfels, grey phase										

LEGEND

C/A - CORE AXIS

Bx - BRECCIATED

NA - NOT ASSAYED

Dis. - DISSEMINATED

f.g. - fine-grained

m.g. - med. grained

py - PYRITE

Mg - MAGNETITE

Pb - GALENA

Zn - SPHALERITE

Po - PYRRHOTITE

CORE Logged by: D.W. Tully, P. Eng.

CORE Split by: M. Andersen

HOLE STARTED: July 19, 1981

HOLE FINISHED: July 23, 1981

HOLE No. E-4-81

COMPANY RAMROD MINING CORPORATION

HOLE DEPTH 152.43 m

CORE SIZE 36 mm

HOLE DIRECTION 102°

CLAIM RIO #5

DIAMOND DRILL CORE LOG - SAMPLE RECORD

DIP 55°

Loc'n EAST CREEK ZONE

collar ELEV. 5050 ft. PAGE No. 1 of 1

LENGTH IN METRES		DESCRIPTION	MINERALIZATION	SAMPLE No.	ASSAY						Pb %	WO ₃ %
FROM	TO				From	To	Length metres	AU OZs	AG OZs	CN %		
0.0	1.2	Casing										
	25.0	Hornfels, grey phase, cherty fragments										
	25.9	Hornfels, grey phase, 15-20% dissem. pyrite and seams	pyrite and seams	919R			> 0.003	0.01	0.02		0.01	0.03
	38.1	Black shale and hornfels, fine seams and dissem. pyrite	and dissem. pyrite									
	40.8	Granodiorite										
	43.9	Hornfels, brown phase, disseminated pyrite	pyrite									
	61.5	Granodiorite										
	64.9	Black shale, fine pyrite seams										
	66.1	Hornfels, grey phase, garnetiferous										
	86.2	Hornfels, grey phase, cherty fragments										
	133.2	Granodiorite										
	135.3	Hornfels, grey phase										
	140.8	Granodiorite										
	141.7	Hornfels, grey phase										
	152.43	Granodiorite										
		END OF HOLE										

LEGEND

C/A - CORE AXIS

Bx - BRECCIATED

NA - NOT ASSAYED

Dis. - DISSEMINATED

f.g. - fine-grained

m.g. - med. grained

NOTE: Core stored at collar of hole

py - PYRITE

Mg - MAGNETITE

Pb - GALENA

Zn - SPHALERITE

Po - PYRRHOTITE

CORE Logged by: D.W. Tully, P.Eng.

CORE Split by: M. Andersen

HOLE STARTED: July 24, 1981

HOLE FINISHED: July 28, 1981

HOLE No. E-5-81

COMPANY RAMROD MINING CORPORATION

HOLE DEPTH 154.57 m

CORE SIZE 36 mm

HOLE DIRECTION 177°

CLAIM RIO #5

DIAMOND DRILL CORE LOG - SAMPLE RECORD

DIP 75°

Loc'n EAST CREEK ZONE
PROPERTY

collar ELEV. 5050 ft. PAGE No. 1 of 1

LENGTH IN METRES		DESCRIPTION	MINERALIZATION	SAMPLE No.	ASSAYS					Pb %	WO ₃ %
FROM	TO				From	To	Length METRES	AU OZS	AG OZS		
0.0	3.6	Casing									
	15.5	Hornfels, grey phase (may be intrusive phase)									
	16.8	Hornfels, grey phase, cherty fragments									
	18.6	Feldspar porphyry dyke									
	30.7	Hornfels, grey phase, cherty fragments, dissem. pyrite									
	32.6	Black shale with hornfels bands									
	36.2	Black shale as above section with dissem. pyrite									
	41.7	Feldspar porphyry dyke									
	48.4	Black shale, fine seams and dissem. pyrite									
	56.1	Granodiorite									
	66.4	Black shale, fine seams and dissem. pyrite									
	67.0	Hornfels, grey phase, dissem. pyrite (10%)									
	73.4	Black shale, fine seams and dissem. pyrite									
	74.0	Hornfels, grey phase, disseminated pyrite									
	94.8	Black shale, fine seams and disseminated pyrite									
	95.7	Hornfels, grey phase, disseminated pyrite									
	136.2	Black shale, fine seams and disseminated pyrite, with fault zones at 99.3, 103.6, 105.7, 106.4, 119.2, 131.4									
	137.2	Granodiorite									
	154.57	Black shale, sparse disseminated pyrite									

LEGENDEND OF HOLE NOTE: Core stored at collar of hole

C/A - CORE AXIS

Bx - BRECCIATED

NA - NOT ASSAYED

Dis. - DISSEMINATED

f.g. - fine-grained

m.g. - med. grained

py - PYRITE

Mg - MAGNETITE

Pb - GALENA

Zn - SPHALERITE

Po - PYRRHOTITE

CORE Logged by: D.W. Tully, P. Eng.

CORE Split by:

HOLE STARTED: July 30, 1981

HOLE FINISHED: August 2, 1981

HOLE No. E-6-81

COMPANY RAMROD MINING CORPORATION

HOLE DEPTH 151.52 m
 CORE SIZE 36 mm
 HOLE DIRECTION 047°
 DIP 55°

CLAIM RID #5
 Loc'n EAST CREEK ZONE
 PROPERTY

DIAMOND DRILL CORE LOG - SAMPLE RECORD

collar ELEV. 5050 ft. PAGE No. 1 of 1

LENGTH IN METRES		DESCRIPTION	MINERALIZATION	SAMPLE No.	ASSAYS						
FROM	TO				From	To	Length	AU	AG	SN	CU
0.0	4.88	Casing									
	18.60	Hornfels, grey phase, dark inclusions (may be intrusive)									
	20.7	Feldspar porphyry dyke									
	25.0	Hornfels, grey phase, as above section									
	34.7	Hornfels, brown phase, black shale remnants, dissem. py.									
	35.9	Hornfels, grey phase, cherty fragments									
	38.4	Hornfels, brown phase, fine (1-2 mm) seams and diss. py.									
	39.6	Granodiorite									
	50.6	Black shale, fine seams and diss. py.									
	52.1	Hornfels, grey phase, fine diss. pbs, dissem. pyrite									
	58.5	Hornfels, grey phase, cherty fragments									
	69.2	Granodiorite									
	74.0	Feldspar porphyry dyke									
	118.6	Granodiorite									
	136.8	Grey phase of intrusive or hornfels (?)									
	151.5	Granodiorite									
		END OF HOLE									

LEGEND

NOTE: Core stored at collar of hole

C/A - CORE AXIS
 Bx - BRECCIATED
 NA - NOT ASSAYED
 Diss. - DISSEMINATED
 f.g. - fine-grained
 m.g. - med. grained

py - PYRITE
 Mg - MAGNETITE
 Pb - GALENA
 Zn - SPHALERITE
 Po - PYRRHOTITE

CORE Logged by: D.W. Tully, P. Eng.
 CORE Split by:
 HOLE STARTED:
 HOLE FINISHED:

HOLE No. E-7-81

COMPANY RAMROD MINING CORPORATION

HOLE DEPTH 152.74 m

CORE SIZE 36 mm

HOLE DIRECTION 237°

CLAIM RIO #5

DIAMOND DRILL CORE LOG - SAMPLE RECORD

DIP 55 °

Loc'n EAST CREEK ZONE
PROPERTY

collar ELEV. 5050 ft. PAGE No. 1 of 2

LENGTH IN METRES		DESCRIPTION	MINERALIZATION	SAMPLE No.	ASSAYS						
FROM	TO				From	To	Length	AU	AG	ZN	CU
0.0	4.88	Casing									
	18.9	Hornfels, brown phase with garnets, grey bands, dissem. py.									
	20.1	Granodiorite									
	30.1	Hornfels, grey phase, garnets and cherty fragments									
	32.0	Hornfels, black shale bands, disseminated pyrite									
	35.6	Hornfels, brown phase, garnetiferous zones									
	39.0	Hornfels, with black shale bands, dissem. pyrite									
	52.1	Hornfels, brown phase with cherty fragments & shale bands									
	54.5	Hornfels, brown phase, zones of garnets									
	55.7	Hornfels, brown phase									
	56.4	Feldspar porphyry dyke									
	57.6	Hornfels, brown phase									
	57.9	Fault zone									
	63.7	Hornfels, brown phase, fine seams and dissem. pyrite									
	65.2	Pink to mauve colored cherty breccia phase of hornfels									
	69.8	Hornfels, brown phase, fine seams and dissem. pyrite									
	74.0	Cherty breccia phase of hornfels									
	84.4	Hornfels, brown phase, shale bands, dissem. pyrite									
	85.9	Cherty Breccia phase of hornfels									

LEGEND

C/A - CORE AXIS

Bx - BRECCIATED

NA - NOT ASSAYED

Dis. - DISSEMINATED

f.g. - fine-grained

m.g. - med. grained

NOTE: Core stored at collar of hole

py - PYRITE

Mg - MAGNETITE

Pb - GALENA

Zn - SPHALERITE

Po - PYRRHOTITE

CORE Logged by: D.W. Tully, P. Eng.

CORE Split by:

HOLE STARTED: August 4, 1981

HOLE FINISHED: August 9, 1981

HOLE No. E-7-81

COMPANY RAMROD MINING CORPORATION

HOLE DEPTH 152.74 m

CLAIM RIO #5

CORE SIZE 36 mm

Loc'n EAST CREEK ZON E

DIAMOND DRILL CORE LOG - SAMPLE RECORD

HOLE DIRECTION 237°

DIP 55°

collar ELEV. 5050 ft. PAGE No. 2 of 2

LENGTH IN METRES		DESCRIPTION	MINERALIZATION	SAMPLE No.	ASSAYS						
FROM	TO				From	To	Length	AU	AG	SN	CU
85.9	89.6	Hornfels, brown phase, black shale bands, fine seams & disseminated pyrite									
	92.0	Granodiorite									
	98.7	Black shale, hornfelsed, fine seams and dissem. py.									
	102.7	Fault zone - leached, vuggy, friable									
	117.3	Black shale, hornfelsed, vuggy zones at 105, 107, 112, 114m with fine seams and disseminated pyrite									
	119.2	Black shale, hornfelsed with + 10% fine seams and disseminated pyrite									
	133.8	Black shale, hornfelsed with vuggy zones at 115, 122, 125, 128, 133 with fine seams and disseminated pyrite									
	152.74	Granodiorite - fault zone at 136 m									
		END OF HOLE									

LEGEND

NOTE: Core stored at collar of hole

C/A - CORE AXIS

py - PYRITE

CORE Logged by: D.W. Tully, P.Eng.

Bx - BRECCIATED

Mg - MAGNETITE

CORE Split by:

NA - NOT ASSAYED

Pb - GALENA

HOLE STARTED: August 4, 1981

Dis. - DISSEMINATED

Zn - SPHALERITE

HOLE FINISHED: August 9, 1981

f.g. - fine-grained

Po - PYRRHOTITE

m.g. - med. grained



CHEMEX LABS LTD.

212 BROOKSBANK AVE
NORTH VANCOUVER, B.C.
CANADA V7J 2C1
TELEPHONE: (604)984-0221
TELEX: 043-52597

• ANALYTICAL CHEMISTS

• GEOCHEMISTS

• REGISTERED ASSAYERS

CERTIFICATE OF ASSAY

TO : TURNEX EXPLORATION SERVICES LTD.
704-525 SEYMOUR ST.
VANCOUVER, B.C.
V6B 3H7

CERT. # : A8113107-001-A
INVOICE # : I8113107
DATE : 28-AUG-81
P.C. # : NCNE
RAFR00

Sample description	Prep code	Pb percent	Zn percent	WO3 percent	Ag (FA) oz/t	Au (FA) oz/t	
902-R	207	<0.01	0.01	0.02	0.04	<0.003	--
903-R	207	<0.01	0.13	0.04	0.06	<0.003	--
904-R	207	<0.01	0.14	0.04	0.02	<0.003	--
905-R	207	0.09	2.22	0.02	0.10	<0.003	--
906-R	207	0.01	0.05	<0.01	0.01	<0.003	--
907-R	207	0.45	0.81	<0.01	0.82	<0.003	--
908-R	207	0.52	3.66	0.04	0.48	<0.003	--
909-R	207	0.02	0.90	0.01	0.06	<0.003	--
910-R	207	<0.01	0.04	0.02	0.05	<0.003	--
911-R	207	<0.01	0.07	0.03	0.01	<0.003	--
912-R	207	<0.01	0.06	0.02	0.01	<0.003	--
913-R	207	<0.01	0.02	0.03	0.01	<0.003	--
914-R	207	<0.01	2.12	<0.01	0.01	<0.003	--
915-R	207	0.91	0.82	0.01	0.28	<0.003	--
916-R	207	1.06	1.26	<0.01	0.38	<0.003	--
917-R	207	0.03	0.23	0.03	0.02	<0.003	--
918-R	207	0.01	0.17	0.04	0.01	<0.003	--
919-R	207	<0.01	0.02	0.03	0.01	<0.003	--

Registered Assayer, Province of British Columbia

